



MARITIME AND PORT AUTHORITY OF SINGAPORE

PORT MARINE NOTICE
NO. 09 OF 2010

22 Jan 2010

Shipping Community
Harbour Craft Community
Pleasure Craft Community

REPAIR WORKS TO SEA WALL AT WEST COAST PARK

Applicable to: Mariners operating at Retan Darat Channel, Sungei Pandan Channel, Republic of Singapore Yacht Club and its vicinity

Date : With effect from 25 Jan 10 to 24 Jul 10.

Location : West Coast Park and its vicinity, within the area bounded by the following co-ordinates (see attached chartlet):

<u>WGS 84 Datum</u>		
<u>Point</u>	<u>Latitude (N)</u>	<u>Longitude (E)</u>
A	01° 17.710'	103° 45.720'
B	01° 17.695'	103° 45.741'
C	01° 17.679'	103° 45.729'
D	01° 17.695'	103° 45.708'

Working Hours : 24 hours daily including Sundays and Public Holidays.

<u>Craft</u>	<u>Name</u>	<u>Harbour Craft Licence No.</u>	<u>Description</u>
	OUNG 3	SR 1222 Z	Work Barge
	OCEAN LINK 122	SR 2991 B	Work Barge
	YTC TUG IX	ST 0884 Z	Tug Boat
	-	ST 0721 E	Tug Boat
	ST 0062 H	ST 0062 H	Tug Boat
	-	ST 0118 G	Tug Boat
	POLITE X	THCL.	Safety Boat

These craft will exhibit the appropriate local and international day and night signals.

Details: : The repair works will entail the removal of the damaged area and restoring the wall back to its original design.

The work barges will be used for transportation of equipment and material to the work site.

Safety boat will be in attendance at all times to warn and re-direct craft in the vicinity to keep clear of the working area.

Further general enquiries relating to the project can be directed to Mr Wong Cheng Wee, the project manager at Tel: 9862 2635 (email: wongji@oung.com.sg).

Caution : **When in the vicinity of the working area, mariners are reminded to:**

- (a) Keep well clear and not to enter the working area;**
- (b) Maintain a proper lookout;**
- (c) Proceed at a safe speed & navigate with caution;**
- (d) Maintain a listening watch on VHF Channel 25 (Pasir Panjang Control)**
- (e) Communicate with Pasir Panjang Control on Channel 25 for assistance, if required.**

TAN HWEE LIN
for PORT MASTER
MARITIME AND PORT AUTHORITY OF SINGAPORE

TEL : 6325 2417
FAX : 6325 2430

103°45'30"

1°17'46.828"N
103°45'17.77"E

500 METRES

METRES 500

50
100
METRES

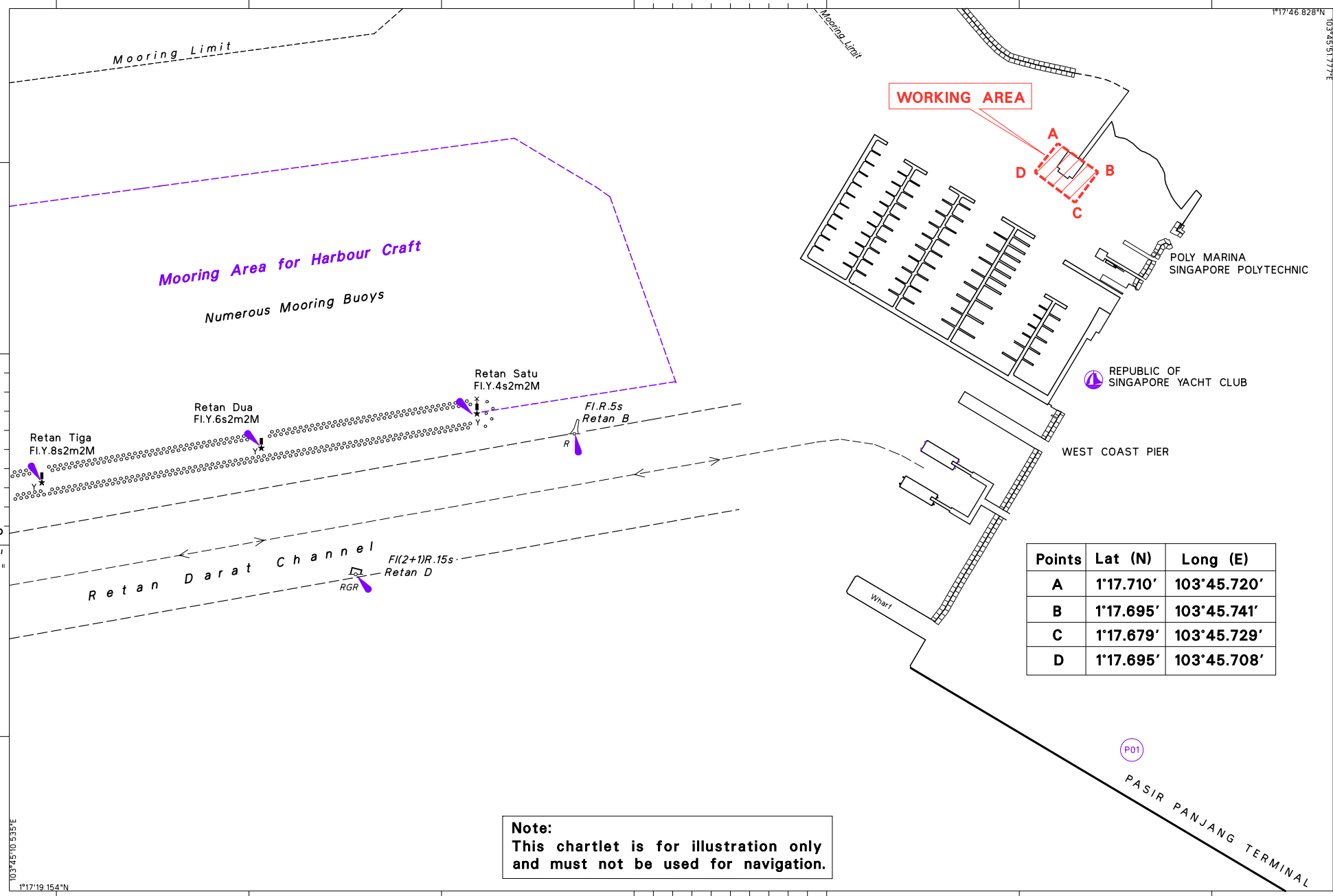
50
100
METRES

17'
30"

17'
30"

0

0



Points	Lat (N)	Long (E)
A	1°17.710'	103°45.720'
B	1°17.695'	103°45.741'
C	1°17.679'	103°45.729'
D	1°17.695'	103°45.708'

Note:
This chartlet is for illustration only
and must not be used for navigation.

103°45'30"E