



MARITIME AND PORT AUTHORITY OF SINGAPORE

PORT MARINE NOTICE  
NO. 15 OF 2010

9 Feb 2010

Shipping Community  
Harbour Craft Community  
Pleasure Craft Community

## CONSTRUCTION OF INTERNATIONAL CRUISE TERMINAL AT MARINA SOUTH

**Applicable to:** Mariners operating at Marina South and its vicinity

This is a revision of PMN No. 172 of 2009. The working area and working period have been revised.

Date : With effect from 15 Feb 2010 to 14 Aug 2010.

Location : Marina South and its vicinity, within the area bounded by the following co-ordinates (see attached chartlet):

<u>Point</u>	<u>WGS 84 Datum</u>		<u>Buoy and Light Characteristics</u>
	<u>Latitude (N)</u>	<u>Longitude (E)</u>	
1	01° 16.186'	103° 51.462'	
2	01° 16.146'	103° 51.629'	
3	01° 16.225'	103° 51.782'	
4	01° 15.965'	103° 51.968'	ICT-2 /Yellow Pillar/Fl.Y 2s
5	01° 15.697'	103° 51.598'	ICT-1 /Yellow Pillar/Fl.Y 4s
6	01° 16.007'	103° 51.376'	
7	01° 16.056'	103° 51.443'	
8	01° 16.092'	103° 51.417'	

Working Hours : 24 hours daily including Sundays and Public Holidays.

Craft : See **Appendix** for list of craft approved for deployment in the working area. These craft will exhibit the appropriate local and international day and night signals.

Details: : The construction works will entail dredging, piling, construction of berths,

terminal deck and mooring dolphins.

Safety boats will be deployed to advise all craft to keep clear of the working area.

Further general enquiries relating to the project can be directed to Mr Shin Sato, the project manager at Tel: 9632 6192 (email: ICT-Sato@mypenta.net).

Caution : **When in the vicinity of the working area, mariners are reminded to:**

- (a) Keep well clear and not to enter the working area;**
- (b) Maintain a proper lookout;**
- (c) Proceed at a safe speed & navigate with caution;**
- (d) Maintain a listening watch on VHF Channel 18 (Keppel Control) ;  
and**
- (e) Communicate with Keppel Control on VHF Channel 18 for assistance, if required.**

BERNARD CHIN  
for PORT MASTER  
MARITIME AND PORT AUTHORITY OF SINGAPORE

TEL : 6325 2464  
FAX : 6325 2430

**CONSTRUCTION OF INTERNATIONAL CRUISE TERMINAL**  
**CRAFT APPROVED FOR DEPLOYMENT IN THE WORKING AREA**

<u>Name</u>	<u>Harbour Craft Licence No.</u>	<u>Description</u>
Koyo Maru	SR 3054 F	Anchor Boat
ENG TOU 264	SR 2967 Z	Crane Barge
CATERMAS 2	SR 1731 J	Crane Barge
POE 1827	SR 2790 A	Crane Barge
E T OFFSHORE 20	SR 2544 E	Crane Barge
ASL 29	SR 2040 J	Crane Barge
Orion 84	SR 2840 A	Crane Barge
B 212	SR 1678 J	Crane Barge
B 112	SR 1672 A	Crane Barge
FF 93	SR 1729 I	Crane Barge
FF97A	SR 2020 F	Crane Barge
CB 015	SR 2616 F	Crane Barge
ENG TOU 174	SR 1148 G	Crane Barge
ENG TOU 224	SR 2194 F	Crane Barge
ENG TOU 243	SR 1998 D	Crane Barge
ENG TOU 255	SR 2648 D	Crane Barge
ENG TOU 275	SR 3034 A	Crane Barge
SEA GRACE 1801	SR 2804 E	Crane Barge
INTAN 111	SR 2723 E	Crane Barge
Eng Tou 277	SR 3064 C	Crane Barge
ASL 102	SR 2693 Z	Crane Barge
INTAN 1806	SR 2850 I	Crane Barge
DELTA PRINCE	SR 3077 E	Crane Barge
MARUHAMA 25	SR 2946 G	Crane Barge
POE OCEAN LIFT	SR 2276 D	Crane Barge
CATERMAS 3	SR 1723 Z	Crane Barge
Queen of Penta Ocean	SR 2443 J	Dredger
KYOEI NO 18	SR 2950 E	Dredger
PANDORA	SR 2913 J	Dredger
JANUS	SR 2885 A	Dredger
EBISU	SR 2687 E	Dredger
NWCMPPL 65	SC 3446 D	Flat Top Barge
NWCMPPL 59	SR 1537 G	Flat Top Barge
OSA 2219	SC 3586 Z	Flat Top Barge
ASL 1506	SC 4315 C	Flat Top Barge
-	SC 4006 E	Flat Top Barge
-	SC 4147 I	Flat Top Barge
ASL 100	SC 4050 B	Flat Top Barge
B 412	SC 3396 D	Flat Top Barge
ENG TOU 250	SC 3714 E	Flat Top Barge
ENG TOU 267	SC 4214 I	Flat Top Barge
ENG TOU 273	SR 2997 A	Flat Top Barge
POE 2170	SR 3071 F	Flat Top Barge
INTAN 4002	SC 4110 Z	Flat Top Barge
INTAN 4001	SC 4109 F	Flat Top Barge
REGENT OFFSHORE 2302	SC 4041 C	Flat Top Barge
LM 2413	SC 4113 D	Flat Top Barge
SS 2305	SC 4243 B	Flat Top Barge
CAPITOL 3301	SC 4008 A	Flat Top Barge
REGENT OFFSHORE 2301	SC 4048 J	Flat Top Barge
MT 11	SR 1822 H	Hopper Barge
MT 12	SR 1821 Z	Hopper Barge
MT 13	SR 1860 J	Hopper Barge

MT 16	SR 1927 E	Hopper Barge
Seitoku B 126	SR 1639 Z	Hopper Barge
Seitoku B 151	SR 1716 G	Hopper Barge
Seitoku B 152	SR 2830 D	Hopper Barge
SHIOTSURU	SC 3806 J	Motor sampan
S F 2	SR 2171 G	Jack Up Barge
KJ 6	SR 2277 B	Jack Up Barge
KJ 5	SR 2160 A	Jack Up Barge
MARINA 1	SC 3962 H	Passenger Boat
ZALIFA	SP 1145 C	Passenger Boat
YORK 1	SP 1132 A	Passenger Boat
EM 17	SP 1311 A	Passenger Launch
EM 19	SP 1317 J	Passenger Launch
EM 18	SP 1310 C	Passenger Launch
KM 2	SP 1128 C	Passenger Launch
KM 5	SP 1222 J	Passenger Launch
SEMANGAT	SR 0034 E	Piling Barge
INAI CEMPAKA	SR 1011 A	Piling Barge
EM 6	SC 3997 J	Safety Boat
EM 10	SC 3759 E	Safety Boat
EM 13	SC 3795 A	Safety Boat
EM 15	SR 2821 E	Safety Boat
VICTORY 2	SR 1842 B	Safety Boat
HIKARIGO NO 20	SR 3060 J	Sand Compaction Barge
EM 23	SC 4321 H	Supply Vessel
SPB 82	SC 4232 G	Supply Vessel
SPB 81	SC 4231 I	Supply Vessel
Moy	SR 2947 E	Survey Boat
INTAN T 1702	ST 1251 I	Tug Boat
-	ST 0246 I	Tug Boat
-	ST 0338 D	Tug Boat
-	ST 0725 H	Tug Boat
BANSING 2	ST 0631 F	Tug Boat
-	ST 0118 G	Tug Boat
SANKO	ST 1229 D	Tug Boat
ANCHOVY	ST 1267 G	Tug Boat
TOLAK EMPAT	ST 1234 J	Tug Boat
TAIHEI	ST 0890 D	Tug Boat
TOLAK SATU	ST 1236 G	Tug Boat
TOLAK SEMBILAN	ST 1256 A	Tug Boat
SEITOKU B 128	ST 2406 F	Tug Boat
TENRYU	ST 0967 F	Tug Boat
ABUKUMA	ST 0982 Z	Tug Boat
-	ST 0455 J	Tug Boat
YOBYO NO 206	ST 1255 C	Tug Boat
-	ST 0399 F	Tug Boat
YOBYO 22	ST 0808 D	Tug Boat
KIM TRANS II	ST 0596 D	Tug Boat
-	ST 0651 J	Tug Boat
-	ST 0021 J	Tug Boat
-	ST 0036 I	Tug Boat
YOBYO 29	ST 0613 H	Tug Boat
HIYORI 3	ST 0948 Z	Tug Boat
-	ST 0048 B	Tug Boat
KUNI MARI	ST 0783 E	Tug Boat
E T OCEAN 8	ST 1093 C	Tug Boat
TOLAK LIMA	ST 1145 Z	Tug Boat
EH GAJAH	ST 1254 E	Tug Boat

EH VICTORIOUS	ST 1261 H	Tug Boat
INTAN T1703	ST 1232 D	Tug Boat
MARUHAMA 26	ST 1282 J	Tug Boat
INTAN T1701	ST 1226 Z	Tug Boat
INTAN T1704	ST 1245 F	Tug Boat
ABADI 6	ST 1225 A	Tug Boat
ABADI 8	ST 1219 G	Tug Boat
ASL KINETIC	ST 2335 C	Tug Boat
CATERMAS 11	ST 0782 G	Tug Boat
NIPPON KAIKO 77	SR 3061 I	Work Barge
INTAN 1501	SR 2865 G	Work Barge
INTAN 2001	SR 2836 C	Work Barge
INTAN 1805	SR 2849 E	Work Barge
GM 36	SR 2660 C	Work Barge
QSA 151	SR 2975 J	Work Barge
EE Fong 5	SR 2731 F	Work Barge
ASL 98	SR 3036 H	Work Barge
ASL 105	SR 2696 D	Work Barge
INTAN 120	SR 2771 E	Work Barge
GEMOK 162	SR 2871 A	Work Barge
CATERMAS 17	SR 2895 I	Work Barge
ASL 95	SR 2588 G	Work Barge
ASL 1505	SR 2961 J	Work Barge
INTAN 1809	SR 2868 A	Work Barge
ENG TOU 274	SR 3015 E	Work Barge
B 118	SR 2842 H	Work Barge
B 218	SR 2860 F	Work Barge
HIKARIGO 1	SR 2907 F	Work Barge
B 312	SR 1696 I	Work Barge
B 512	SR 1938 J	Work Barge
B 612	SR 2669 G	Work Barge
ENG TOU 202	SR 2814 B	Work Barge
ENG TOU 260	SR 2722 G	Work Barge
ENG TOU 265	SR 3044 I	Work Barge
ENG TOU 271	SR 2949 A	Work Barge
ENG TOU 272	SR 2974 B	Work Barge
PSB 01	SR 3065 A	Work Barge
WINBUILD 2205	SR 2945 I	Work Barge
POE 2170	SR 3071 F	Work Barge
POE 2305	SR 2953 Z	Work Barge
RH B2301	SR 3067 H	Work Barge
RO 1201	SR 2791 Z	Work Barge
POE WB 7	SR 2986 F	Work Barge
-	SR 2227 F	Work Boat
KORYU	SR 3018 Z	Work Boat
DHI Explorer I	SR 2604 B	Work Boat
DHI Explorer II	SR 2638 G	Work Boat
DHI Explorer III	SR 2474 J	Work Boat
-	SR 2805 C	Work Boat
DHI Explorer 5	SR 2801 J	Work Boat
DOVER SURVEY	SR 2400 G	Work Boat
YOBYO NO 700	SR 2845 B	Work Boat
DAIBYO No 7	SR 2844 D	Work Boat
TOA 125	SR 2011 G	Work Boat
EM 7	SR 2250 J	Work Boat
NIPPONKAIKO 67	SR 2906 H	Work Boat
YOBYO NO 205	SR 2581 Z	Work Boat
YOBYO 203	SR 2450 C	Work Boat

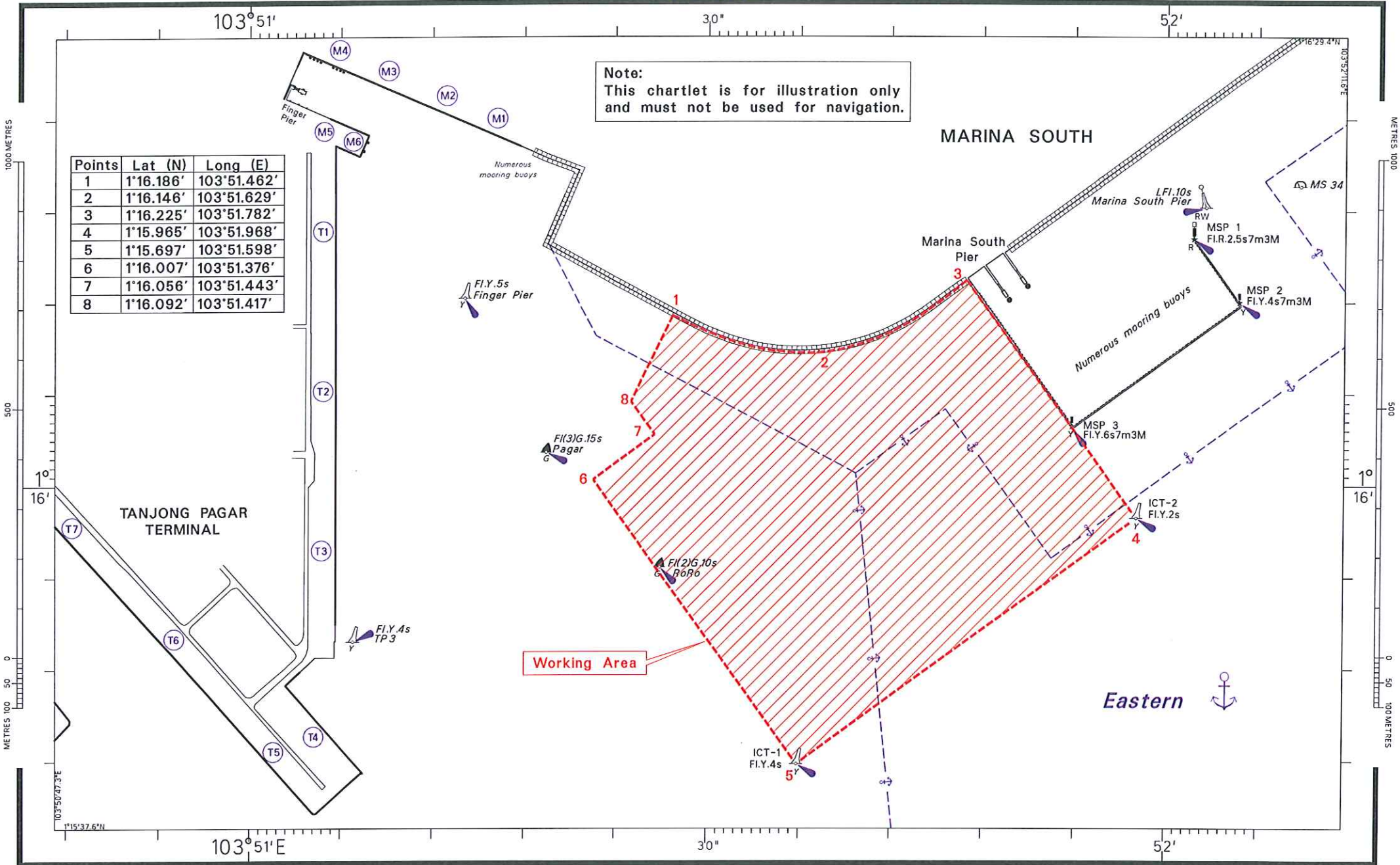
SEMAKAU 4  
SENTOSA 2  
UZUSHIO

SR 2219 E  
SR 1914 C  
SR 1844 I

Work Boat  
Work Boat  
Work Boat

WGS84

Scale 1:10 000



Note:  
 This chartlet is for illustration only  
 and must not be used for navigation.

Points	Lat (N)	Long (E)
1	1°16.186'	103°51.482'
2	1°16.146'	103°51.629'
3	1°16.225'	103°51.782'
4	1°15.965'	103°51.968'
5	1°15.697'	103°51.598'
6	1°16.007'	103°51.376'
7	1°16.056'	103°51.443'
8	1°16.092'	103°51.417'

Working Area

Eastern