



MARITIME AND PORT AUTHORITY OF SINGAPORE

PORT MARINE NOTICE
NO. 20 of 2010

19 Feb 2010

Shipping Community
Harbour Craft Community
Pleasure Craft Community

SEMI SUBMERSIBLE RIG “MAERSK DELIVERER” AT THE WEST JURONG ANCHORAGE

Applicable to: Mariners operating at the West Jurong Anchorage

Date : With effect from 23 Feb 2010 to 21 Mar 2010.

Location : West Jurong Anchorage within an area bounded by the following co-ordinates (See attached chartlet) :

<u>WGS 84 Datum</u>		
<u>Point</u>	<u>Latitude (N)</u>	<u>Longitude (E)</u>
1	01° 14.541'	103° 37.700'
2	01° 14.655'	103° 37.945'
3	01° 14.410'	103° 38.059'
4	01° 14.296'	103° 37.815'
5	01° 14.476'	103° 37.880' Rig Position

Working Hours : 24 hours daily including Sundays and Public Holidays.

Craft : Name Harbour Craft Licence No. Description

KST SATURN	ST 1161 A	Tugboat
KST SPACE	ST 1170 J	Tugboat
MAJU SUN	ST 1184 J	Tugboat
MAJU SOLITAIRE	ST 1192 A	Tugboat
PIONEER 12	ST 1123 I	Tugboat /Safety boat
WAKAEI MARU 8	SR 1597 J	Crane Barge
ISAMIGO 3	SR 2629 H	Crane Barge
FELS 27	SR 2902 E	Flat Top barge
FELS 26	SR 2901 G	Flat Top barge

These crafts will exhibit the appropriate local and international day and night signals.

Details : Work on the rig entails system testing and installation of thrusters.

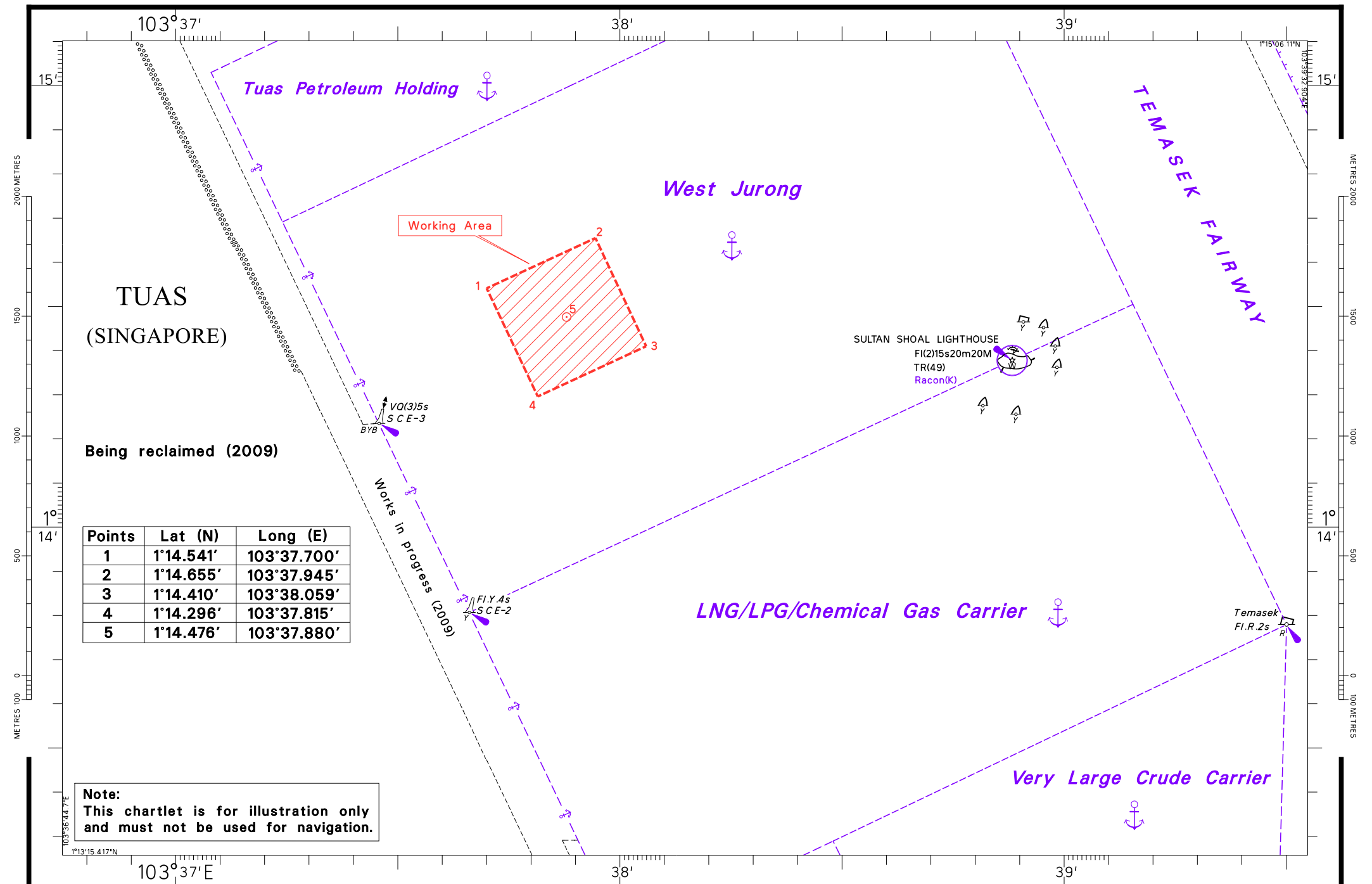
A safety boat will be in attendance during the entire period of stay of "Maersk Deliverer" at the anchorage.

Further enquiries relating to the project can be directed to Capt. Lim Ewe Seng, the Senior manager at Tel No: 9047 8591 (email: eweseng.lim@keppelfels.com).

Caution : **When in the vicinity of the working area, mariners are reminded to:**

- (a) Keep well clear and not to enter the working area;**
- (b) Maintain a proper lookout;**
- (c) Proceed at a safe speed and navigate with caution;**
- (d) Maintain a listening watch on VHF Channel 22 (Jurong Control) and VHF Channel 68 (West Control); and**
- (e) Communicate with Jurong Control on VHF Channel 22 and West Control on Channel VHF 68 for assistance, if required.**

BERNARD CHIN
for PORT MASTER
MARITIME AND PORT AUTHORITY OF SINGAPORE
TEL : 6325 2464
FAX : 6325 2430



TUAS
(SINGAPORE)

Being reclaimed (2009)

Points	Lat (N)	Long (E)
1	1°14.541'	103°37.700'
2	1°14.655'	103°37.945'
3	1°14.410'	103°38.059'
4	1°14.296'	103°37.815'
5	1°14.476'	103°37.880'

Note:
This chartlet is for illustration only
and must not be used for navigation.