



MARITIME AND PORT AUTHORITY OF SINGAPORE

PORT MARINE NOTICE
NO. 97 of 2010

13 Aug 2010

Shipping Community
Harbour Craft Community

CONSTRUCTION OF CONTAINER BERTH AND STACKING YARD ON JURONG ISLAND

Applicable to: Mariners operating in the vicinity of West Jurong Channel

This is a revision of Port Marine Notice No. 79 of 2010. The working area and the working period have been revised.

Date : With effect from 14 Aug 10 to 13 Feb 11

Location : West Jurong Channel, within a working area bounded by the following co-ordinates (see attached chartlet):

<u>Point</u>	<u>WGS 84 Datum</u>	
	<u>Latitude (N)</u>	<u>Longitude (E)</u>
A	01° 16.734'	103° 39.978'
B	01° 16.812'	103° 40.089'
C	01° 16.770'	103° 40.118'
D	01° 16.693'	103° 40.008'

Working Hours : 24 hours daily including Sundays and Public Holidays.

Craft : Craft approved for deployment in the working area are as follows:

<u>Name</u>	<u>Harbour Craft Licence No.</u>	<u>Description</u>
Draco	SR 2131 H	Dredger
FF 93	SR 1729 I	Crane Barge
FF 97 A	SR 2020 F	Crane Barge
CB-015	SR 2616 F	Crane Barge
Catermas 2	SR 1731 J	Crane Barge
Catermas 3	SR 1723 Z	Crane Barge
Catermas 17	SR 2895 J	Crane Barge
Intan 1807	SR 3050 C	Crane Barge
Eng Tou 224	SR 2194 F	Crane Barge

E T Lift 1	SR 1925 I	Crane Barge
NWCMPL 70	SC 4001 D	Landing Craft
Semangat	SR 0034 E	Piling Barge
Intan 1801	SC 4159 B	Flat Top Barge
Intan 1802	SC 4160 F	Flat Top Barge
Eng Tou 234	SC 3415 D	Flat Top Barge
Eng Tou 199	SR 1767 A	Work Barge
Eng Tou 269	SR 2933 E	Work Barge
AOM 1820	SR 3107 J	Work Barge
AOM 1824	SR 3128 C	Work Barge
AOM 1507	SR 3127 E	Work Barge
Eng Tou 252	SR 2050 H	Work Barge
Eng Tou 274	SR 3015 E	Work Barge
ASL 95	SR 2588 G	Work Barge
Daiby No 7	SR 2844 D	Work Boat
Semakau 3	SR 1674 H	Work Boat
Semakau 4	SR 2219 E	Work Boat
Sentosa 2	SR 1914 C	Work Boat
Victory 2	SR 1842 B	Work Boat
Yobo 203	SR 2450 C	Work Boat
Yobo No 205	SR 2581 Z	Work Boat
Yobo No 700	SR 2845 B	Work Boat
Catermas 15	SR 1740 Z	Work Boat
DHI Explorer I	SR 2604 B	Work Boat
DHI Explorer II	SR 2638 G	Work Boat
DHI Explorer III	SR 2474 J	Work Boat
DHI Explorer 5	SR 2801 J	Work Boat
-	SR 2805 C	Work Boat
Kenryo	ST 1273 A	Tug Boat
Tsurumaru No 6	ST 1259 F	Tug Boat
Tsurumaru No 7	ST 1262 F	Tug Boat
Yoby 22	ST 0808 D	Tug Boat
Yoby 29	ST 0613 H	Tug Boat
Hiyori 3	ST 0948 Z	Tug Boat/ Safety Boat
Yoby No 206	ST 1255 C	Tug Boat
Catermas 11	ST 0782 G	Tug Boat
Catermas 16	ST 1263 D	Tug Boat
Kim Trans II	ST 0596 D	Tug Boat
-	ST 0651 J	Tug Boat
Marina 1	SC 3962 H	Supply Vessel
Shiotsuru	SC 3806 J	Safety Boat

These craft will exhibit the appropriate local and international day and night signals.

Details: : Construction of the new container berth entail piling, concrete works, installation of walkways and construction of superstructure. Piling and concrete works will be carried out by work barges.

Marine surveys will be carried out within the site boundary.

Installation of a temporary jetty will be carried out within the working area.

Safety boats will be deployed to warn craft to keep clear of the working area.

Further general enquiries relating to the project can be directed to Mr Fumihiko Osawa, the project manager, at Tel: 9641 8243 (email: f_oosawa@toa-const.co.jp).

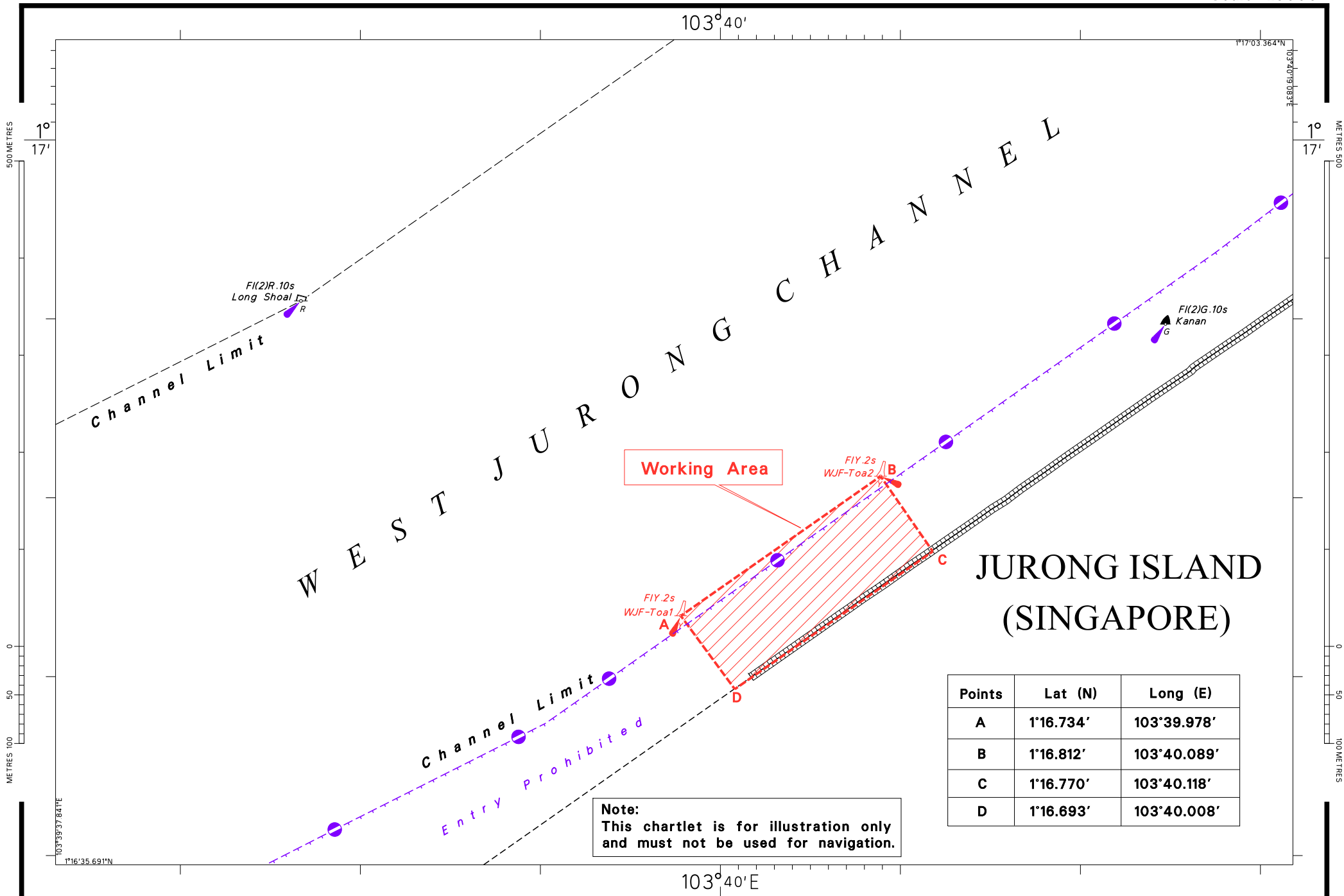
Caution : When in the vicinity of the working area, mariners are reminded to:

- (a) Keep well clear and not to enter the working area;
- (b) Maintain a proper lookout;
- (c) Proceed at a safe speed & navigate with caution;
- (d) Maintain a listening watch on VHF Channel 22 (Jurong Control); and
- (e) Communicate with Jurong Control on VHF Channel 22, for assistance, if required.

Craft List updated on 08 Oct 10

Please call Capt. Tan Hwee Lin at Tel: 6325 2417 (or Fax: 6325 2430) for clarification of this Port Marine Notice

CAPT LEE CHENG WEE
PORT MASTER
MARITIME AND PORT AUTHORITY OF SINGAPORE



Note:
 This chartlet is for illustration only
 and must not be used for navigation.

Points	Lat (N)	Long (E)
A	1°16.734'	103°39.978'
B	1°16.812'	103°40.089'
C	1°16.770'	103°40.118'
D	1°16.693'	103°40.008'