



MARITIME AND PORT AUTHORITY OF SINGAPORE

PORT MARINE NOTICE
NO. 32 OF 2026

25 Feb 2026

Shipping Community
Harbour Craft Community
Pleasure Craft Community

SUPPLY AND DELIVERY OF SAND AT TUAS VIEW EXTENSION

Applicable to: Mariners operating in the vicinity south of Tuas View Extension

This PMN supersedes Port Marine Notice No. 116 of 2025. The working period has been extended, and the list of craft and the chartlet have been revised. There are no changes in the work scope.

Date : With effect from 25 Feb 2026 to 24 Aug 2026.

Location : South of Tuas View Extension, within the working area bounded by the following co-ordinates (see attached chartlet):

	<u>(WGS 84 Datum)</u>	
<u>Point</u>	<u>Latitude (N)</u>	<u>Longitude (E)</u>
1	01° 13.133'	103° 36.898'
2	01° 13.133'	103° 36.958'
3	01° 13.074'	103° 36.958'
4	01° 13.090'	103° 36.898'
5	01° 13.133'	103° 37.273'
6	01° 13.133'	103° 37.359'
7	01° 12.972'	103° 37.359'
8	01° 12.994'	103° 37.273'

Working Hours : 24 hours Daily including Sundays and Public Holidays.

Craft : Please refer to **ANNEX A** for the list of craft approved for deployment in the working area.

These craft will exhibit the appropriate local and international day and night signals.

Details : Self-discharging sand carriers will anchor within the designated dumping area at Tuas View Extension for the discharging of sand.

A safety boat will be deployed to warn other craft in the vicinity of the working area.

Further enquiries relating to the project can be directed to:
Victor Wong, Project Manager,
Tel: +65 9795 1669, email: Victor@xinshaholding.com

Caution : **When in the vicinity of the working area, mariners are reminded to:**

- a) **Keep well clear and not to enter the working area;**
- b) **Maintain a proper lookout;**
- c) **Proceed at a safe speed and navigate with caution;**
- d) **Maintain a listening watch on VHF Channel 22 (Jurong Control); and**
- e) **Communicate with Jurong Control on VHF Channel 22 for assistance, if required.**

Please call Capt. Yeap Chee Kah at Tel: +65 6325 2462 or Marine Safety Control Centre (MSCC) Duty Officer at +65 6325 2488/89 for clarification on this Port Marine Notice.

CAPT CHONG JIA CHYUAN
PORT MASTER
MARITIME AND PORT AUTHORITY OF SINGAPORE

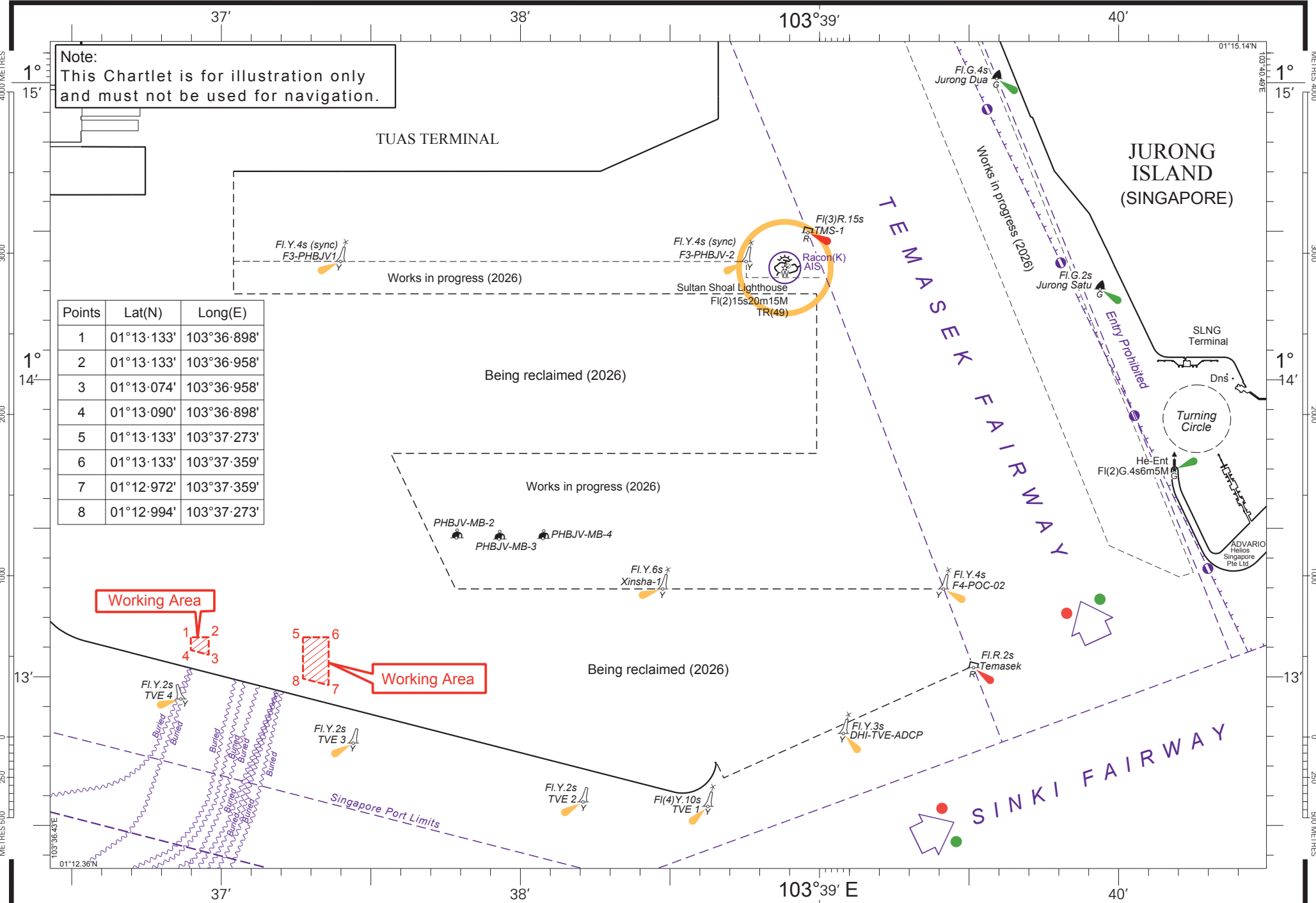
CRAFT APPROVED FOR DEPLOYMENT IN THE WORKING AREA

<u>Name</u>	<u>Harbor Craft License No</u>	<u>Description</u>
ABADI 6	ST 1225A	TUG BOAT
AQUARIUS EXPRESS 11	SP 1430D	PASSENGER LAUNCH
ASL 2528	SR 4259 E	BARGE
ASL T1307	ST 1376B	TUG BOAT
AXCEL SUPREME	SP 1422C	PASSENGER LAUNCH
AXCEL SPLENDOUR	SP 1369C	PASSENGER LAUNCH / SAFETY BOAT
AXCEL STELLAR	SP 1372C	PASSENGER LAUNCH
CAUSEWAY BAY 2505	SC 4559H	FLAT TOP BARGE
E T HARBOUR 21	ST 1143C	TUG BOAT
E T OCEAN 11	ST 1353C	TUG BOAT
E T OCEAN 22	ST 1456D	TUG BOAT
EFFORT 1000	SR 3657I	WORKBOAT
ENGHUP GALLANT	ST 1526I	TUG BOAT
EM 30	SC 4688H	SUPPLY VESSEL
ENGHUP HERALD	ST 1539J	TUG BOAT
ENGHUP POLARIS	ST 1488B	TUG BOAT
ENGHUP PUSHER	ST 1347I	TUG BOAT
ENGHUP RESPOND	ST 1359B	TUG BOAT
ENGHUP TENDER	ST 1455F	TUG BOAT
ENGHUP VALOUR	ST 1445I	TUG BOAT
ENG TOU 272	SC 5011G	FLAT TOP BARGE
GM GLORY	ST 1305C	TUG BOAT
HARBOUR 4502	ST 1617F	TUG BOAT
KAVARNA BAY 2521	SC 4911I	FLAT TOP BARGE
KM POWER	SC 3797H	SUPPLY VESSEL
KST 31	ST 0871H	TUG BOAT
KST SKY	ST 1243Z	TUG BOAT
KST STELLAR	ST 1286C	TUG BOAT
KST SUCCESS	ST 1457B	TUG BOAT
KST SUMMIT	ST 1458J	TUG BOAT
KST SUPER	ST 1244H	TUG BOAT
LINTAS LAUTAN 251	SC 4659D	FLAT TOP BARGE
SC 4229G	SC 4229G	SUPPLY VESSEL
SL-T1	SR 3321I	HOPPER BARGE
SL-T2	SR 3579C	HOPPER BARGE
SL-T12	SR 3581E	HOPPER BARGE
SL-T13	SR 3582C	HOPPER BARGE
SL-T14	SR 3274C	HOPPER BARGE

<u>Name</u>	<u>Harbor Craft License No</u>	<u>Description</u>
SP 9562B	SP 9562B	PASSENGER LAUNCH
SR 3591B	SR 3591B	WORKBOAT
STL H3	SR 3480J	HOPPER BARGE
STL H9	SR 3647A	HOPPER BARGE
STL H16	SR 3644G	HOPPER BARGE
STL H17	SR 3618H	HOPPER BARGE
STL H18	SR 3614E	HOPPER BARGE
STL P1	SR 3505Z	WORKBOAT
STL PT1	ST 1531E	TUG BOAT
STL PT2	ST 1533A	TUG BOAT
STL PT3	ST 1544G	TUG BOAT
STL PT4	SR 3860A	WORKBOAT
STL V	SR 3119D	HOPPER BARGE
STL WB1	SR 3569F	WORK BARGE
WEIYANG 018	SR 4253F	WORK BARGE
WEIYANG 019	SR 4254D	WORK BARGE
WENG ONN EXPRESS 2	SC 3886F	SUPPLY VESSEL/SAFETY BOAT

Updated 9 Apr 2026

Note:
This Chartlet is for illustration only
and must not be used for navigation.



Points	Lat(N)	Long(E)
1	01°13'133"	103°36'898"
2	01°13'133"	103°36'958"
3	01°13'074"	103°36'958"
4	01°13'090"	103°36'898"
5	01°13'133"	103°37'273"
6	01°13'133"	103°37'359"
7	01°12'972"	103°37'359"
8	01°12'994"	103°37'273"