



MARITIME AND PORT AUTHORITY OF SINGAPORE

PORT MARINE NOTICE  
NO. 55 OF 2026

07 Apr 2026

Shipping Community  
Harbour Craft Community  
Pleasure Craft Community

**RECLAMATION AT PULAU SUDONG**

**Applicable to:** Mariners operating in the vicinity of Pulau Sudong

This PMN supersedes Port Marine Notice No. 133 of 2025. The work scope, list of craft and the chartlet have been revised.

Date : With effect from 08 Apr 2026 to 07 Oct 2026.

Location : At sea within the working area bounded by the following coordinates (see attached chartlet):

Eastern Sudong - Working Area A (WGS 84 Datum)

<u>Point</u>	<u>Latitude (N)</u>	<u>Longitude (E)</u>
1	01° 12.147'	103° 43.595'
2	01° 11.961'	103° 43.595'
3	01° 11.961'	103° 44.060'
4	01° 12.270'	103° 44.408'
5	01° 12.270'	103° 44.569'
6	01° 12.345'	103° 44.569'
7	01° 12.567'	103° 44.360'
8	01° 12.567'	103° 43.803'

Western Sudong - Working Area B (WGS 84 Datum)

<u>Point</u>	<u>Latitude (N)</u>	<u>Longitude (E)</u>
9	01° 12.358'	103° 42.475'
10	01° 12.385'	103° 42.475'
11	01° 12.385'	103° 42.203'
12	01° 12.270'	103° 42.203'
13	01° 12.270'	103° 42.435'

Working Hours : 24 hours daily, including Sundays and public holidays.

Craft : Please refer to **ANNEX A** for the list of craft approved for deployment in the working area.

These craft will exhibit the appropriate local and international day and night signals.

Details : The works involve the installation of navigational buoys, removal of metallic debris, demolition of abandoned jetty, dredging works, installation of marine staging platforms for soil instrumentation, infilling works, marine vibro-compaction, stone revetment works, and jetty construction to facilitate the reclamation and jetty construction works at Pulau Sudong.

Safety boats will be deployed to warn other crafts in the vicinity of the working area.

Further enquiries relating to the project can be directed to Mr Yutaka Senda, Project Director at HP: 9722 7812 Email: [yutaka.senda@santarli.com](mailto:yutaka.senda@santarli.com)

Caution : **When in the vicinity of the working area, mariners are reminded to:**

- a) **Keep well clear and not to enter the working area;**
- b) **Maintain a proper lookout;**
- c) **Proceed at a safe speed and navigate with caution;**
- d) **Maintain a listening watch on VHF Channel 68 (West Control); and communicate with West Control for assistance if required.**

Please call Capt. Hazel Leo at Tel: +65 6325 2465 or Marine Safety Control Centre (MSCC) Duty Officer at +65 6325 2488/2489 for clarification on this Port Marine Notice

CAPT CHONG JIA CHYUAN  
PORT MASTER  
MARITIME AND PORT AUTHORITY OF SINGAPORE

**CRAFT APPROVED FOR DEPLOYMENT IN THE WORKING AREA**

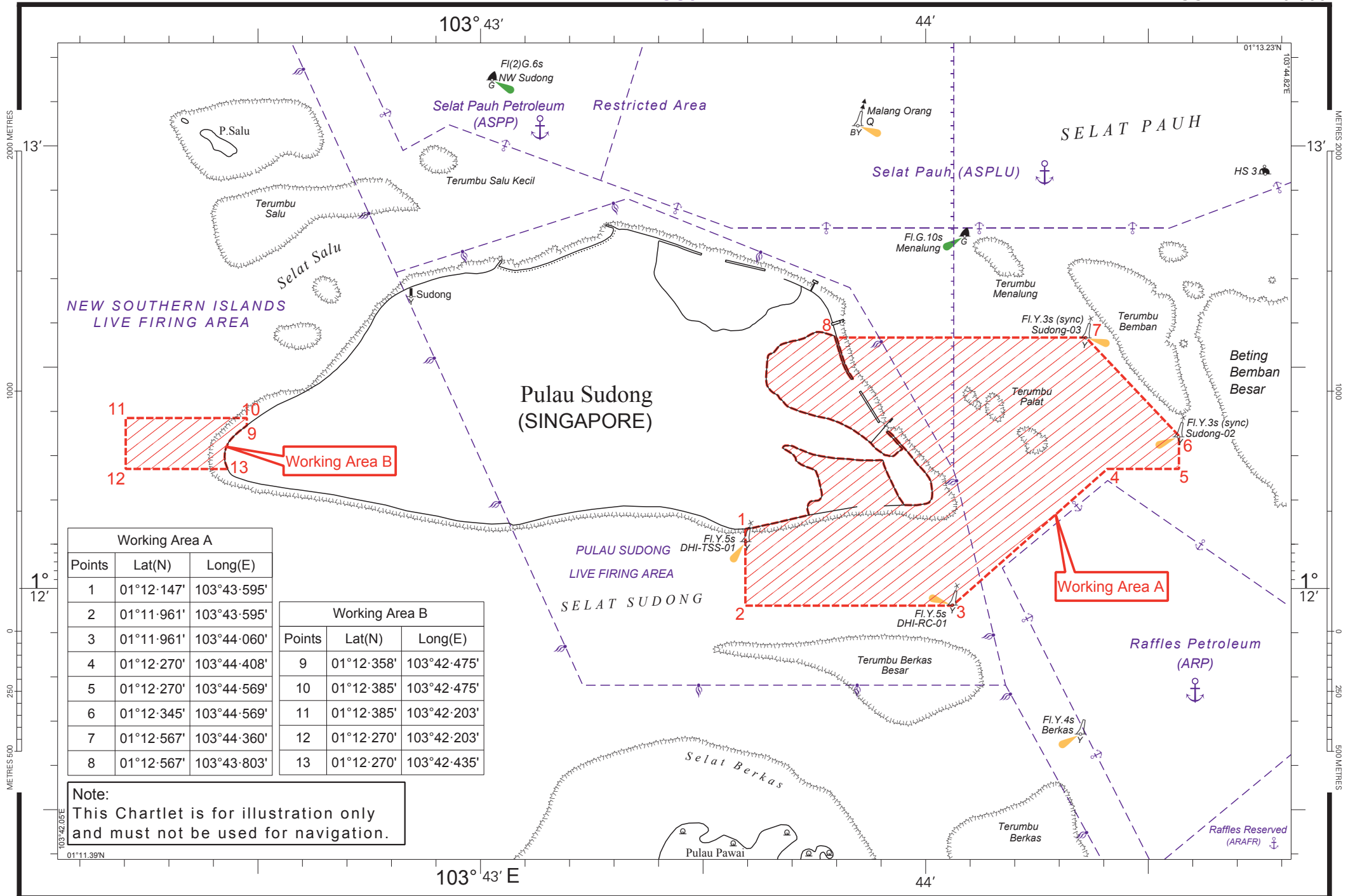
<b><u>Name of Craft</u></b>	<b><u>Harbour Craft License No.</u></b>	<b><u>Description</u></b>
AB15 05	STL 1669I	TUG BOAT
ALPHA JUPITER	ST 1334G	TUG BOAT
APOLLO BAY 1207	SC 4883Z	FLAT TOP BARGE
AST 1837	SR 3291C	CRANE BARGE
AYER CHERDEK	SC 4666G	WATERBOAT
CATERMAS 18	SR 3147Z	CRANE BARGE
CB200-05	SR 3849J	CRANE BARGE
CSM	SB 0748I	BUNKER TANKER
CSM 1	SB 0702J	BUNKER TANKER
CSM 2	SB 0779I	BUNKER TANKER
DHI ATLAS	SR 4009F	UTILITY VESSEL
DHI CETUS	SR 2323Z	WORK BOAT
DHI EXPLORER II	SR 2638G	WORKBOAT
DHI EXPLORER III	SR 2474J	WORKBOAT
DHI EXPLORER IV	SR 2805C	WORKBOAT
DHI EXPLORER VII	SR 3076G	WORKBOAT
E T HARBOUR 11	ST 0936F	TUG BOAT
E T HARBOUR 15	ST 0970F	TUG BOAT
E T HARBOUR 17	ST 1007J	TUG BOAT
E T HARBOUR 18	ST 1117D	TUG BOAT
E T HARBOUR 19	ST 1126C	TUG BOAT
E T HARBOUR 20	ST 1139E	TUG BOAT
E T HARBOUR 21	ST 1143C	TUG BOAT
E T HARBOUR 22	ST 1146H	TUG BOAT
E T HARBOUR 23	ST 1155G	TUG BOAT
E T HARBOUR 25	ST 1208A	TUG BOAT

EE FONG 6	SR 3942Z	WORK BARGE
EFFORT 1000	SR 3657I	WORK BOAT
EH ILLUMINATOR	SR 3507F	WORK BOAT / SAFETY BOAT
EL NIDO	ST 1332J	TUG BOAT
ENG TOU 221	SR 1481H	WORK BARGE / SPUD BARGE
ENG TOU 286	SR 3819I	WORK BARGE / SPUD BARGE
ENG TOU 287	SR 3820B	WORK BARGE / SPUD BARGE
FUNDY BAY	SC 5057E	FLAT TOP BARGE
HARBOUR 4501	STL 1616H	TUG BOAT
HEISEI 7	SR 3184D	GRAB DREDGER
HEISEI 8	SR 3366I	GRAB DREDGER
I VIPER 2	SP 1433I	FERRY BOAT
I VIPER 3	SP 1460F	FERRY BOAT
I VIPER 6	SP 1471A	FERRY BOAT
KHB 1208	SC 5090G	BARGE
KIM HENG 1881	SR 4089D	CRANE BARGE
KM 20	ST 1284G	TUG BOAT
KM JULIET	SC 8999D	SUPPLY VESSEL
KM ROMEO	SC 6000G	PASSENGER / SAFETY BOAT
KM TANGO	SC 7000B	PASSENGER / SAFETY BOAT
KM WHISKEY	SC 5186E	SUPPLY VESSEL
KM XERXES	SC 5196B	PASSENGER / SAFETY BOAT
KMT ALICE	ST 1640J	TUG BOAT
KMT JENNY	ST 1559E	TUG BOAT
RG DISCOVERY	SR 3836I	JACK-UP BARGE
SC 4229G	SC 4229G	SUPPLY VESSEL
SL T1	SR 3321I	HOPPER BARGE
SL T14	SR 3274C	HOPPER BARGE
SOON LI 08	SR 3660I	GRAB DREDGER
SOON LI 18	SR 3661G	GRAB DREDGER
SP 9562B	SP 9562B	PASSENGER LAUNCH

SR 3591B	SR 3591B	WORK BOAT
SR 3666H	SR 3666H	WORKBOAT
SR 3915B	SR 3915B	PASSENGER / SAFETY BOAT
SR 4235H	SR 4235H	WORK BOAT
STL H1	SR 3478I	HOPPER BARGE
STL H16	SR 3722B	HOPPER BARGE
STL H17	SR 3618H	HOPPER BARGE
STL H18	SR 3614E	HOPPER BARGE
STL H2	SR 3479G	HOPPER BARGE
STL H20	SR 3642J	HOPPER BARGE
STL H4	SR 3557B	HOPPER BARGE
STL H9	SR 3647A	HOPPER BARGE
STL P1	SR 3505Z	PASSENGER / SAFETY BOAT
STL P2	SR 3521A	PASSENGER / SAFETY BOAT
STL P7	SR 4238B	PASSENGER / SAFETY BOAT
STL P8	SR 4256J	WORKBOAT
STL P9	SR 4288I	PASSENGER / SAFETY BOAT
STL PS1	SR 4215C	WORK BARGE
STL PT1	ST 1531E	PUSHER TUG
STL PT2	ST 1533A	PUSHER TUG
STL PT4	SR 3860A	PUSHER TUG
STL PT5	ST 1566H	ANCHOR BOAT
STL PT6	ST 1687G	TUG BOAT
STL PT7	ST 1689C	TUG BOAT
STL V	SR 3119D	HOPPER BARGE
STL WB 1	SR 3569F	WORK BARGE
STL WB 120-1	SR 3658G	WORK BARGE
STL WB 120-2	SR 3673J	WORK BARGE
PENTA 7	SR 4064I	WORK BOAT
YJP SURVEYORS 2	SR 3770B	WORKBOAT
YJP SURVEYORS 4	SR 3821J	WORKBOAT

YJP SURVEYORS 7	SR 3809A	WORKBOAT
YJP SURVEYORS 8	SR 4091F	WORKBOAT
YORK 315	SC 5168G	PASSENGER / SAFETY BOAT
YORK 316	SC 5181D	PASSENGER / SAFETY BOAT
YORK ACE	SP 0708A	FERRY BOAT

*Updated 23 Jun 2026*



Working Area A		
Points	Lat(N)	Long(E)
1	01°12'147'	103°43'595'
2	01°11'961'	103°43'595'
3	01°11'961'	103°44'060'
4	01°12'270'	103°44'408'
5	01°12'270'	103°44'569'
6	01°12'345'	103°44'569'
7	01°12'567'	103°44'360'
8	01°12'567'	103°43'803'

Working Area B		
Points	Lat(N)	Long(E)
9	01°12'358'	103°42'475'
10	01°12'385'	103°42'475'
11	01°12'385'	103°42'203'
12	01°12'270'	103°42'203'
13	01°12'270'	103°42'435'

Note:  
This Chartlet is for illustration only  
and must not be used for navigation.