



MARITIME AND PORT AUTHORITY OF SINGAPORE

PORT MARINE NOTICE
NO. 42 OF 2024

15 May 2024

Shipping Community
Harbour Craft Community
Pleasure Craft Community

PIPELINE REPLACEMENT WORKS AT PULAU AYER CHAWAN

Applicable to: Mariners operating in the vicinity of Pesek Basin

Date : With effect from 15 May 2024 to 31 Jul 2024.

Location : In the vicinity of Pesek Basin, within the working area bounded by the following co-ordinates (see attached chartlet):

(WGS 84 Datum)

| <u>Point</u> | <u>Latitude (N)</u> | <u>Longitude (E)</u> |
|--------------|---------------------|----------------------|
| 1 | 01°16.682' | 103°41.493' |
| 2 | 01°17.149' | 103°41.922' |
| 3 | 01°17.098' | 103°41.977' |
| 4 | 01°16.630' | 103°41.548' |

Working Hours : 24 hours daily including Sundays and Public Holidays.

| <u>Craft</u> | <u>Name</u> | <u>Harbour Craft Licence No.</u> | <u>Description</u> |
|--------------|-----------------|----------------------------------|--------------------|
| | E.T. HARBOUR 11 | ST 0936F | TUG |
| | E.T. HARBOUR 18 | ST 1117D | TUG |

| | | |
|-----------------|----------|-------------------|
| E.T. HARBOUR 24 | ST 1173E | TUG |
| EM 28 | SC 4232G | PASSENGER BOAT |
| EM 30 | SC 4688H | PASSENGER BOAT |
| EM 35 | SC 4900C | PASSENGER BOAT |
| ENG TOU 268 | SR 2919Z | CRANE BARGE |
| ENG TOU 286 | SR 3819I | MATERIAL BARGE |
| ENG TOU 287 | SR 3820B | MATERIAL BARGE |
| ENG TOU 290 | SC 5016H | MATERIAL BARGE |
| JIBCP 8 | SR 3761C | ANCHOR BARGE |

These craft will exhibit the appropriate local and international day and night signals.

Details : Pipeline replacement works involves dismantling and replacing the pipelines running along the approach berth. Works will be carried out with the assistance of barges and tugboats.

Safety boats will be deployed to warn other craft in the vicinity of the working area.

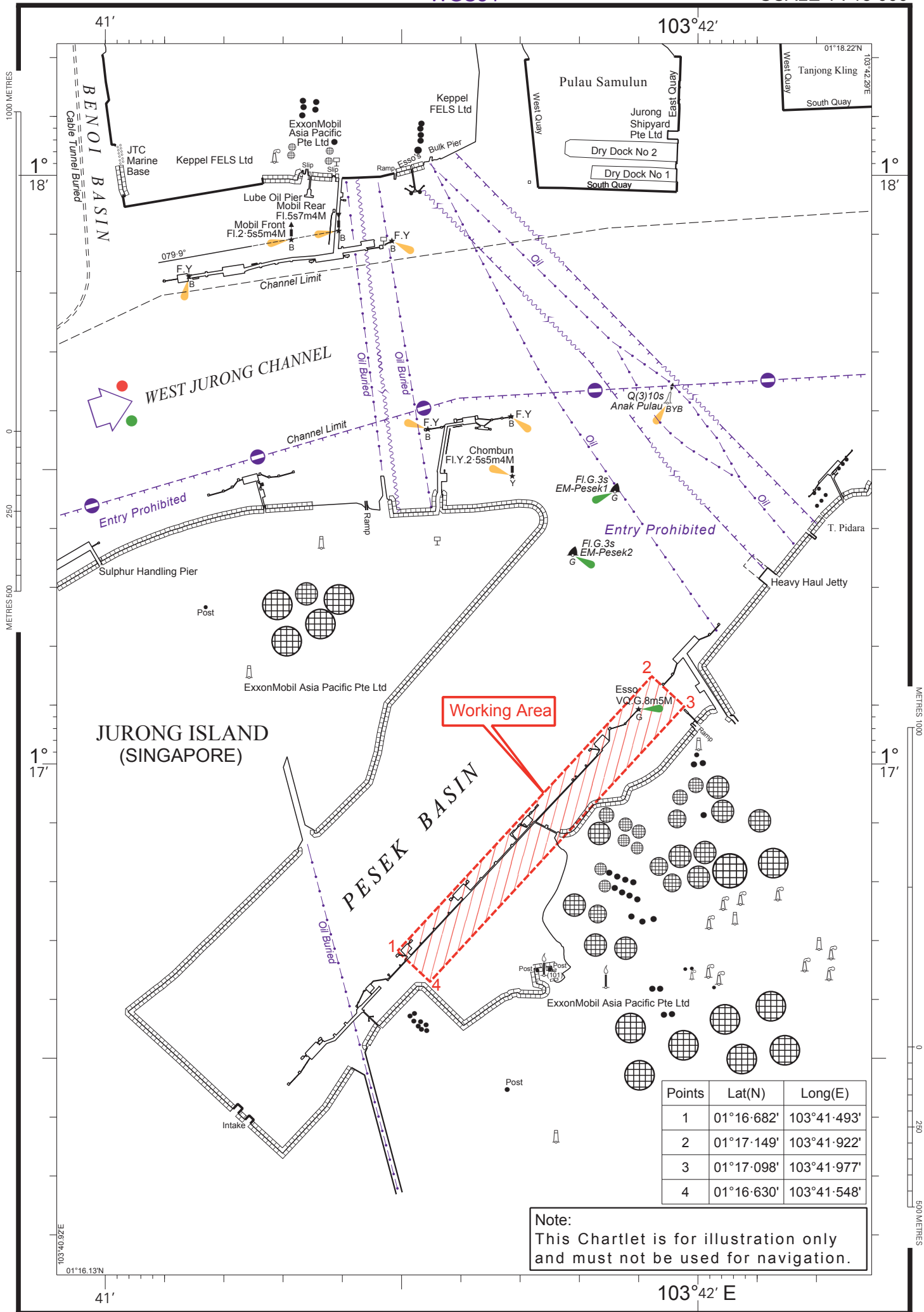
Further enquires relating to the project can be directed to Mr. Kyaw Lin Aung, Project Manager at Tel: (65) 9007 1544 (email: linaung.kyaw@rotaryeng.com.sg).

Caution : **When in the vicinity of the working area, mariners are reminded to:**

- a) **Keep well clear and not to enter the working area;**
- b) **Maintain a proper lookout;**
- c) **Proceed at a safe speed and navigate with caution;**
- d) **Maintain a listening watch on VHF Channel 22 (Jurong Control); and**
- e) **Communicate with Jurong Control on VHF Channel 22 for assistance, if required.**

Please call Capt. Magesh Sivakumar at Tel: 6325-2473 or Marine Safety Control Centre (MSCC) Duty Officer at (65) 6325-2488/2489 for clarification on this Port Marine Notice.

CAPT CHONG JIA CHYUAN
PORT MASTER
MARITIME AND PORT AUTHORITY OF SINGAPORE



| Points | Lat(N) | Long(E) |
|--------|------------|-------------|
| 1 | 01°16'682' | 103°41'493' |
| 2 | 01°17'149' | 103°41'922' |
| 3 | 01°17'098' | 103°41'977' |
| 4 | 01°16'630' | 103°41'548' |

Note:
This Chartlet is for illustration only
and must not be used for navigation.