



MARITIME AND PORT AUTHORITY OF SINGAPORE

PORT MARINE NOTICE  
NO 43 OF 2024

17 May 2024

Shipping Community  
Harbour Craft Community  
Pleasure Craft Community

**MARINE SOIL INVESTIGATION FOR PROPOSED DEVELOPMENT**

**Applicable to:** Mariners operating in the vicinity off Tanjong Pagar Container Terminal

Date : With effect from 17 May 2024 to 17 Nov 2024.

Location : Off Tanjong Pagar Container Terminal, within the working area bounded by the following co-ordinates (see attached chartlet):

<u>Working Area (WGS 84 Datum)</u>			
<u>Sector</u>	<u>Point</u>	<u>Latitude (N)</u>	<u>Longitude (E)</u>
A	1	1°16.3526'	103°51.1840'
	2	1°16.2646'	103°51.3224'
	3	1°16.1636'	103°51.5130'
	4	1°16.1124'	103°51.4414'
	16	1°16.2046'	103°51.2350'
	17	1°16.1016'	103°51.4260'
B	4	1°16.1124'	103°51.4414'
	5	1°16.0102'	103°51.5167'
	6	1°16.0286'	103°51.545'
	7	1°16.0000'	103°51.5657'
	8	1°15.9137'	103°51.5542'
	9	1°15.8837'	103°51.5106'
	13	1°15.8786'	103°51.4650'

B	14	1°16.0303'	103°51.2974'
	15	1°16.1694'	103°51.2380'
	16	1°16.2046'	103°51.2350'
	17	1°16.1016'	103°51.4260'
C	9	1°15.8837'	103°51.5106'
	10	1°15.5309'	103°51.6935'
	11	1°15.4262'	103°51.5345'
	12	1°15.6277'	103°51.2797'
	13	1°15.8786'	103°51.4650'

<u>Bore Holes Within Working Area (WGS 84 Datum)</u>					
<u>Sector</u>	<u>From</u>	<u>To</u>	<u>Point</u>	<u>Latitude (N)</u>	<u>Longitude (E)</u>
A	15 May 2024	15 May 2024	MCPT-Z1-30	1° 16.1230'	103° 51.3870'
	16 May 2024	16 May 2024	MCPT-Z3-14	1° 16.2220'	103° 51.3780'
	17 May 2024	17 May 2024	MCPT-Z3-12	1° 16.2700'	103° 51.2950'
	06 Jun 2024	07 Jun 2024	MBH-Z1-25	1° 16.1230'	103° 51.4580'
	08 Jun 2024	09 Jun 2024	MBH-Z3-16	1° 16.1770'	103° 51.4570'
	10 Jun 2024	11 Jun 2024	MBH-Z3-14	1° 16.2250'	103° 51.3240'
B	12 May 2024	12 May 2024	MCPT-Z1-19A	1° 15.9885'	103° 51.4907'
	13 May 2024	13 May 2024	MCPT-Z1-36	1° 16.0525'	103° 51.4782'
	14 May 2024	14 May 2024	MCPT-Z1-34	1° 16.0692'	103° 51.4409'
	18 May 2024	18 May 2024	MCPT-Z3-13	1° 16.1188'	103° 51.2792'
	19 May 2024	20 May 2024	MCPT-Z1-26	1° 16.0692'	103° 51.3331'
	21 May 2024	21 May 2024	MCPT-Z1-31	1° 16.0149'	103° 51.3870'
	22 May 2024	22 May 2024	MCPT-Z1-18A	1° 15.9574'	103° 51.4465'
	25 May 2024	26 May 2024	MBH-Z1-46	1° 15.9035'	103° 51.4405'
	26 May 2024	27 May 2024	MBH-Z1-17A	1° 16.0049'	103° 51.5120'
	27 May 2024	28 May 2024	MBH-Z1-47	1° 15.9238'	103° 51.4720'
	28 May 2024	30 May 2024	MBH-Z1-16A	1° 15.9731'	103° 51.4685'
	29 May 2024	30 May 2024	MBH-Z1-27	1° 16.0149'	103° 51.4409'
	31 May 2024	01 Jun 2024	MBH-Z1-15A	1° 15.9415'	103° 51.4248'
	31 May 2024	01 Jun 2024	MBH-Z1-26	1° 16.1234'	103° 51.4585'
	02 Jun 2024	04 Jun 2024	MBH-Z1-23	1° 16.0149'	103° 51.3331'
	02 Jun 2024	03 Jun 2024	MBH-Z3-13	1° 16.0692'	103° 51.2792'
	04 Jun 2024	05 Jun 2024	MBH-Z1-24	1° 16.0692'	103° 51.3870'
05 Jun 2024	06 Jun 2024	MBH-Z3-15	1° 16.1234'	103° 51.3331'	
07 Jun 2024	09 Jun 2024	MBH-Z3-12	1° 16.1777'	103° 51.2792'	
C	09 May 2024	10 May 2024	MBH-Z1-10A	1° 15.5948'	103° 51.5465'
	09 May 2024	10 May 2024	MBH-Z2-A23	1° 15.6400'	103° 51.5245'
	11 May 2024	12 May 2024	MBH-Z1-11A	1° 15.6932'	103° 51.4980'
	11 May 2024	13 May 2024	MBH-Z1-12A	1° 15.7424'	103° 51.4736'
	12 May 2024	13 May 2024	MBH-Z2-A25	1° 15.5784'	103° 51.5500'
	13 May 2024	14 May 2024	MBH-Z1-45	1° 15.8549'	103° 51.4646'
	14 May 2024	15 May 2024	MBH-Z2-A14	1° 15.7775'	103° 51.4561'

C	14 May 2024	16 May 2024	MBH-Z2-A20	1° 15.7147'	103° 51.4798'
	15 May 2024	16 May 2024	MBH-Z1-09A	1° 15.5666'	103° 51.5077'
	16 May 2024	18 May 2024	MBH-Z2-A11	1° 15.7904'	103° 51.3996'
	17 May 2024	18 May 2024	MBH-Z1-08A	1° 15.6055'	103° 51.4691'
	17 May 2024	18 May 2024	MBH-Z1-13A	1° 15.8309'	103° 51.4296'
	19 May 2024	20 May 2024	MBH-Z1-35	1° 15.5706'	103° 51.4444'
	19 May 2024	20 May 2024	MBH-Z2-A13	1° 15.7550'	103° 51.4246'
	19 May 2024	21 May 2024	MBH-Z2-A17	1° 15.7201'	103° 51.4497'
	21 May 2024	22 May 2024	MBH-Z1-41	1° 15.6595'	103° 51.5600'
	21 May 2024	22 May 2024	MCPT-Z1-33	1° 15.7570'	103° 51.4013'
	22 May 2024	23 May 2024	MBH-Z2-A22	1° 15.6541'	103° 51.4697'
	23 May 2024	24 May 2024	MBH-Z1-42	1° 15.7108'	103° 51.5395'
	23 May 2024	25 May 2024	MBH-Z2-A27	1° 15.5177'	103° 51.5751'
	24 May 2024	26 May 2024	MBH-Z2-A26	1° 15.5497'	103° 51.5471'
	26 May 2024	27 May 2024	MBH-Z1-07A	1° 15.6476'	103° 51.4349'
	27 May 2024	28 May 2024	MBH-Z1-38	1° 15.5366'	103° 51.5587'
	28 May 2024	30 May 2024	MBH-Z2-A16	1° 15.6945'	103° 51.4146'
	29 May 2024	31 May 2024	MBH-Z2-A24	1° 15.5878'	103° 51.4889'
	31 May 2024	01 Jun 2024	MBH-Z2-A12	1° 15.7298'	103° 51.3895'
	01 Jun 2024	02 Jun 2024	MBH-Z2-A21	1° 15.6331'	103° 51.4404'
	02 Jun 2024	04 Jun 2024	MBH-Z1-06A	1° 15.6833'	103° 51.3920'
	03 Jun 2024	05 Jun 2024	MBH-Z1-34	1° 15.6099'	103° 51.4072'
	05 Jun 2024	06 Jun 2024	MBH-Z2-A19	1° 15.6642'	103° 51.4096'
	07 Jun 2024	09 Jun 2024	MBH-Z1-36	1° 15.5330'	103° 51.4831'
	09 Jun 2024	09 Jun 2024	MCPT-Z1-07A	1° 15.6639	103° 51.4113'
	10 Jun 2024	11 Jun 2024	MBH-Z1-37	1° 15.5007'	103° 51.5258'
	10 Jun 2024	10 Jun 2024	MCPT-Z1-08A	1° 15.6250'	103° 51.4498'
	11 Jun 2024	11 Jun 2024	MCPT-Z1-09A	1° 15.5860'	103° 51.4884'
	12 Jun 2024	14 Jun 2024	MBH-Z1-39	1° 15.5605'	103° 51.6004'
	12 Jun 2024	12 Jun 2024	MCPT-Z1-10A	1° 15.5807'	103° 51.5272'
	13 Jun 2024	14 Jun 2024	MCPT-Z1-38	1° 15.6248'	103° 51.4958'
	15 Jun 2024	16 Jun 2024	MBH-Z1-40	1° 15.6121'	103° 51.5850'
	15 Jun 2024	15 Jun 2024	MCPT-Z1-37	1° 15.6688'	103° 51.4643'
16 Jun 2024	16 Jun 2024	MCPT-Z1-35	1° 15.7129'	103° 51.4328'	
17 Jun 2024	19 Jun 2024	MBH-Z1-43	1° 15.7580'	103° 51.5140'	
17 Jun 2024	17 Jun 2024	MCPT-Z1-15A	1° 15.8083'	103° 51.4401'	
18 Jun 2024	18 Jun 2024	MCPT-Z1-14A	1° 15.7670'	103° 51.4614'	
19 Jun 2024	19 Jun 2024	MCPT-Z1-13A	1° 15.7178'	103° 51.4858'	
20 Jun 2024	21 Jun 2024	MBH-Z1-44	1° 15.8060'	103° 51.4646'	
20 Jun 2024	20 Jun 2024	MCPT-Z1-12A	1° 15.6686'	103° 51.5102'	
21 Jun 2024	21 Jun 2024	MCPT-Z1-11A	1° 15.6194'	103° 51.5345'	

Working Hours : 24 hours daily including Sundays and Public Holidays.

<u>Craft</u>	:	<u>Name</u>	<u>Harbour Craft Licence No.</u>	<u>Description</u>
		ENG TOU 284	SR 3685D	BARGE
		ET LIFT 5	SR 3089I	BARGE
		GULBIS	SR 2886Z	BARGE
		HDJ3	SR 1888J	BARGE
		KM 1	ST 0797E	TUGBOAT
		KM ROMEO	SC 6000G	SUPPLY VESSEL
		KM TANGO	SC 7000B	SUPPLY VESSEL (SAFETY BOAT)
		PENTA 7	SR 4064I	WORKBOAT
		SALVERN	SR 2421Z	UTILITY VESSEL
		SKY 23	ST 1090I	TUGBOAT
		ST 689	ST 0689H	TUGBOAT

These craft will exhibit the appropriate local and international day and night signals.

Details : The soil investigation work will be carried out by spud / jack-up barges assisted by tug boats. The safety zone is a circular area of 25m radius centered at the jack up barges.

Safety boats will be in attendance to warn and direct craft in the vicinity to keep clear of working area.

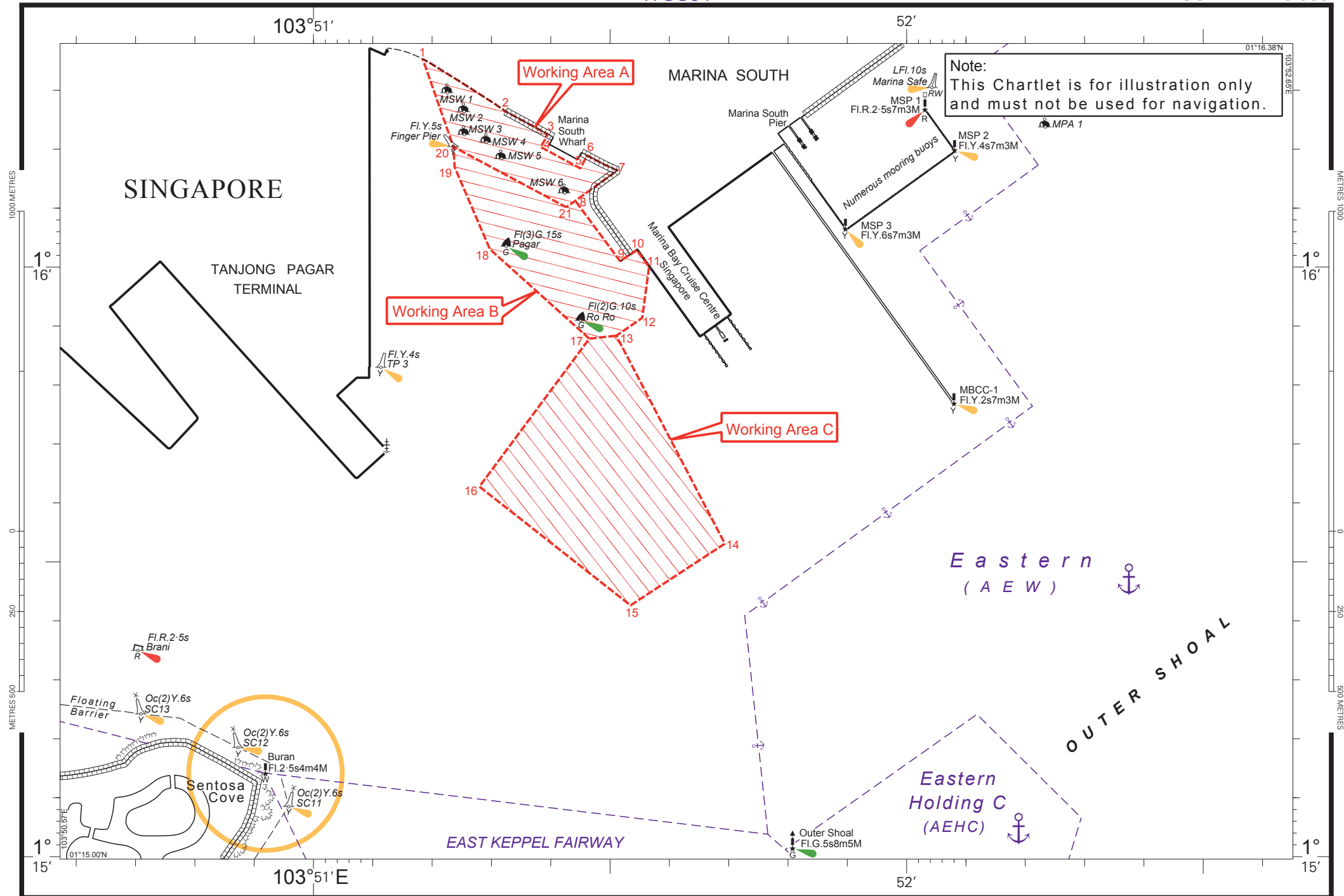
Further enquires relating to the project can be directed to Mr. Nel Cortes, Project Manager at Tel: (65) 9729-4150 (email: [nel.cortes@element.com](mailto:nel.cortes@element.com))

Caution : **When in the vicinity of the working area, mariners are reminded to:**

- a) **Keep well clear and not to enter the working area;**
- b) **Maintain a proper lookout;**
- c) **Proceed at a safe speed and navigate with caution;**
- d) **Maintain a listening watch on VHF Channel 05 (Keppel Control); and**
- e) **Communicate with Keppel Control on VHF Channel 05 for assistance, if required.**

Please call Capt. Magesh Sivakumar at Tel: (65) 6325-2473 or Marine Safety Control Centre (MSCC) Duty Officer at (65) 6325 2488 for clarification on this Port Marine Notice.

CAPT CHONG JIA CHYUAN  
PORT MASTER  
MARITIME AND PORT AUTHORITY OF SINGAPORE

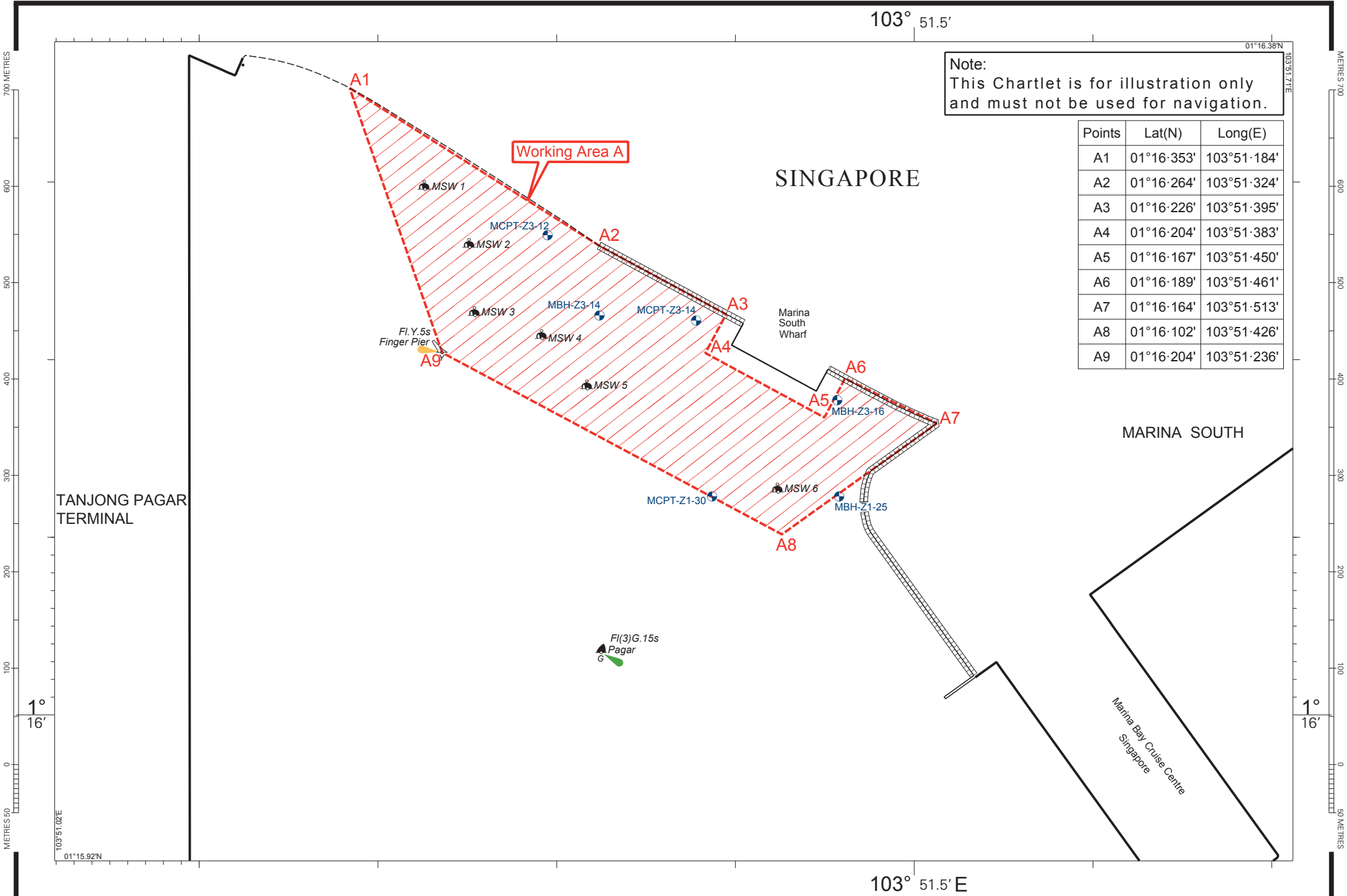


103° 51.5'

01°16.38'N

Note:  
This Chartlet is for illustration only  
and must not be used for navigation.

Points	Lat(N)	Long(E)
A1	01°16'353"	103°51'184"
A2	01°16'264"	103°51'324"
A3	01°16'226"	103°51'395"
A4	01°16'204"	103°51'383"
A5	01°16'167"	103°51'450"
A6	01°16'189"	103°51'461"
A7	01°16'164"	103°51'513"
A8	01°16'102"	103°51'426"
A9	01°16'204"	103°51'236"



TANJONG PAGAR  
TERMINAL

SINGAPORE

MARINA SOUTH

Marina Bay Cruise Centre  
Singapore

Working Area A

Marina  
South  
Wharf

Fl(3)G. 15s  
Pagar  
G

METRES 700 600 500 400 300 200 100 0

METRES 700 600 500 400 300 200 100 0

103°51'02"E

103°51'17"E

103° 51.5' E