



MARITIME AND PORT AUTHORITY OF SINGAPORE

PORT MARINE NOTICE  
NO. 46 OF 2024

20 May 2024

Shipping Community  
Harbour Craft Community  
Pleasure Craft Community

**MARINE SOIL INVESTIGATION OFF TANJONG PENJURU**

**Applicable to:** Mariners operating in the vicinity South off Tanjong Penjuru

Date : With effect from 20 May 2024 to 20 Nov 2024.

Location : In the vicinity South Off Tanjong Penjuru, within the working area bounded by the following co-ordinates (see attached chartlet):

Boreholes Location (WGS 84 Datum)

<u>Point</u>	<u>Latitude (N)</u>	<u>Longitude (E)</u>
ABH1	01°17.813'	103°44.792'
ABH2	01°17.811'	103°44.822'
ABH3	01°17.800'	103°44.861'
ABH4	01°17.801'	103°44.901'
ABH5	01°17.781'	103°44.938'
ABH6	01°17.775'	103°44.978'
ABH7	01°17.790'	103°45.015'
ABH8	01°17.798'	103°45.055'
ABH9	01°17.797'	103°45.089'

Working Hours : 24 hours daily including Sundays and Public Holidays.

<u>Craft</u>	<u>Name</u>	<u>Harbour Craft Licence No.</u>	<u>Description</u>
:	TRAVERSE TEC1	SR 1995Z	WORK BOAT
	KING 22	SR 3773G	SAFETY BOAT

SR 3548C  
HTJ NO 1  
POLITE VIII  
POLITE X  
SR2851G

SR 3548C  
SR 0903B  
ST 1415G  
ST 1399A  
SR 2851G

SAFETY BOAT  
JACK-UP BARGE  
TUGBOAT  
TUGBOAT  
WORK BOAT

These craft will exhibit the appropriate local and international day and night signals.

**Details** : Soil investigation work will be carried out by means of marine drilling from a jack-up barge. The safety zone is a circular area of 30m radius centered at the working barge.

A safety boat will be in attendance to warn vessels in the vicinity to keep clear of the working area.

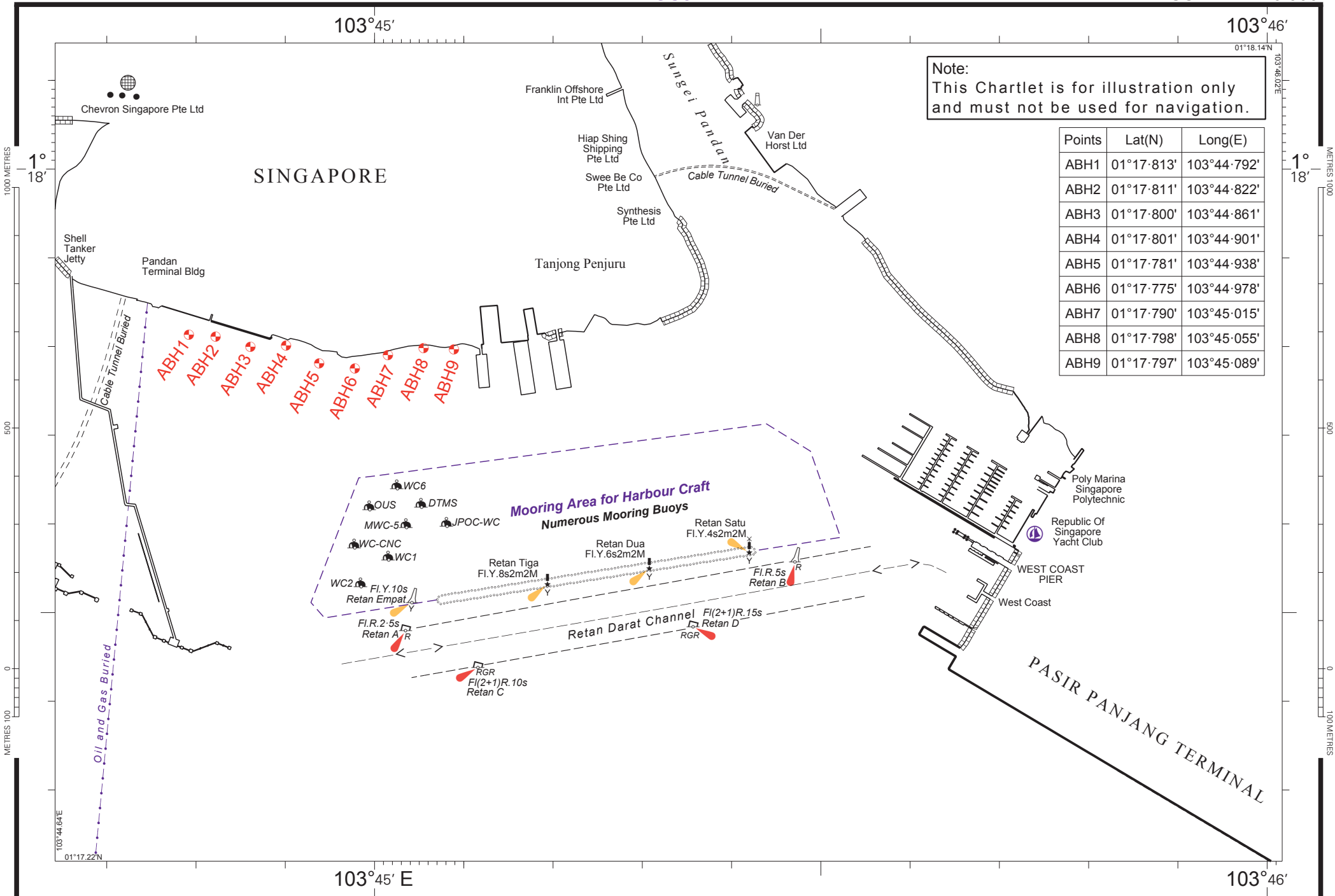
Further enquires relating to the project can be directed to Mr. Rajiff Karu, Project Manager at Tel: (65) 9340-2096 (email: [rajiff@kwangsing.com.sg](mailto:rajiff@kwangsing.com.sg)).

**Caution** : **When in the vicinity of the working area, mariners are reminded to:**

- a) **Keep well clear and not to enter the working area;**
- b) **Maintain a proper lookout;**
- c) **Proceed at a safe speed and navigate with caution;**
- d) **Maintain a listening watch on VHF Channel 18 (Pasir Panjang Control); and**
- e) **Communicate with Pasir Panjang Control on VHF Channel 18 for assistance, if required.**

Please call Capt. Magesh Sivakumar at Tel: 6325-2473 or Marine Safety Control Centre (MSCC) Duty Officer Tel: 6325-2488 for clarification on this Port Marine Notice

CHONG JIA CHYUAN  
PORT MASTER  
MARITIME AND PORT AUTHORITY OF SINGAPORE



Note:  
This Chartlet is for illustration only  
and must not be used for navigation.

Points	Lat(N)	Long(E)
ABH1	01°17-813'	103°44-792'
ABH2	01°17-811'	103°44-822'
ABH3	01°17-800'	103°44-861'
ABH4	01°17-801'	103°44-901'
ABH5	01°17-781'	103°44-938'
ABH6	01°17-775'	103°44-978'
ABH7	01°17-790'	103°45-015'
ABH8	01°17-798'	103°45-055'
ABH9	01°17-797'	103°45-089'