



MARITIME AND PORT AUTHORITY OF SINGAPORE

PORT MARINE NOTICE  
NO. 59 OF 2024

25 June 2024

Shipping Community  
Harbour Craft Community  
Pleasure Craft Community

**Removal of Existing Floating Sea Barrier for Construction Access at Pulau Punggol Timor**

**Applicable to:** Mariners operating in the vicinity off East Johor Strait

Date : With effect from 25 June 2024 to 25 September 2024.

Location : Off Pulau Punggol Timor, within the working area bounded by the following co-ordinates (see attached chartlet):

Working Area (WGS 84 Datum)

<u>Point</u>	<u>Latitude (N)</u>	<u>Longitude (E)</u>
1	01°25.504'	103°53.306'
2	01°25.526'	103°53.272'
3	01°25.602'	103°53.322'
4	01°25.582'	103°53.357'

Working Hours : 24 hours daily including Sundays and Public Holidays.

<u>Craft</u>	:	<u>Name</u>	<u>Harbour Craft Licence No.</u>	<u>Description</u>
		YTC TUG IX	ST 0884Z	PUSHER TUG
		YTC TUG 25	ST 1492J	PUSHER TUG
		YTC 25	SR 3111I	CRANE BARGE
		YTC 37	SR 3271I	EXCAVATOR BARGE
		BINTAN BAY 1502	SR 3865B	WORK BARGE
		KUTA BAY 1201	SC 4656Z	FLAT TOP BARGE
		CANYON BAY 1803	SC 5125C	FLAT TOP BARGE
		YTC WORKBOAT 16	SR 3997G	WORKBOAT
		HAYASAKA 6	SR 3051A	CRANE BARGE
		KOKUNEMARU 18	SR 3016C	CRANE BARGE
		TAIRYU GO	SR 3175E	CRANE BARGE
		OSHIO	ST 1365G	TUG BOAT
		OUNG T6	ST 1548Z	TUG BOAT
		YAKUSHI MARU NO. 5	ST 1405Z	TUG BOAT/SAFETY BOAT
		YAKUSHI MARU NO. 3	SR 3444D	WORK BOAT/SAFETY BOAT
		RIKIMARU NO. 1	ST 1425D	TUG BOAT/SAFETY BOAT
		OUNG WB1	SR 3869E	WORK BOAT/SAFETY BOAT

These craft will exhibit the appropriate local and international day and night signals.

Details : Existing floating sea barriers will be removed to facilitate constructions access in the area. Works will be carried out using crane barges, assisted by tug boats.

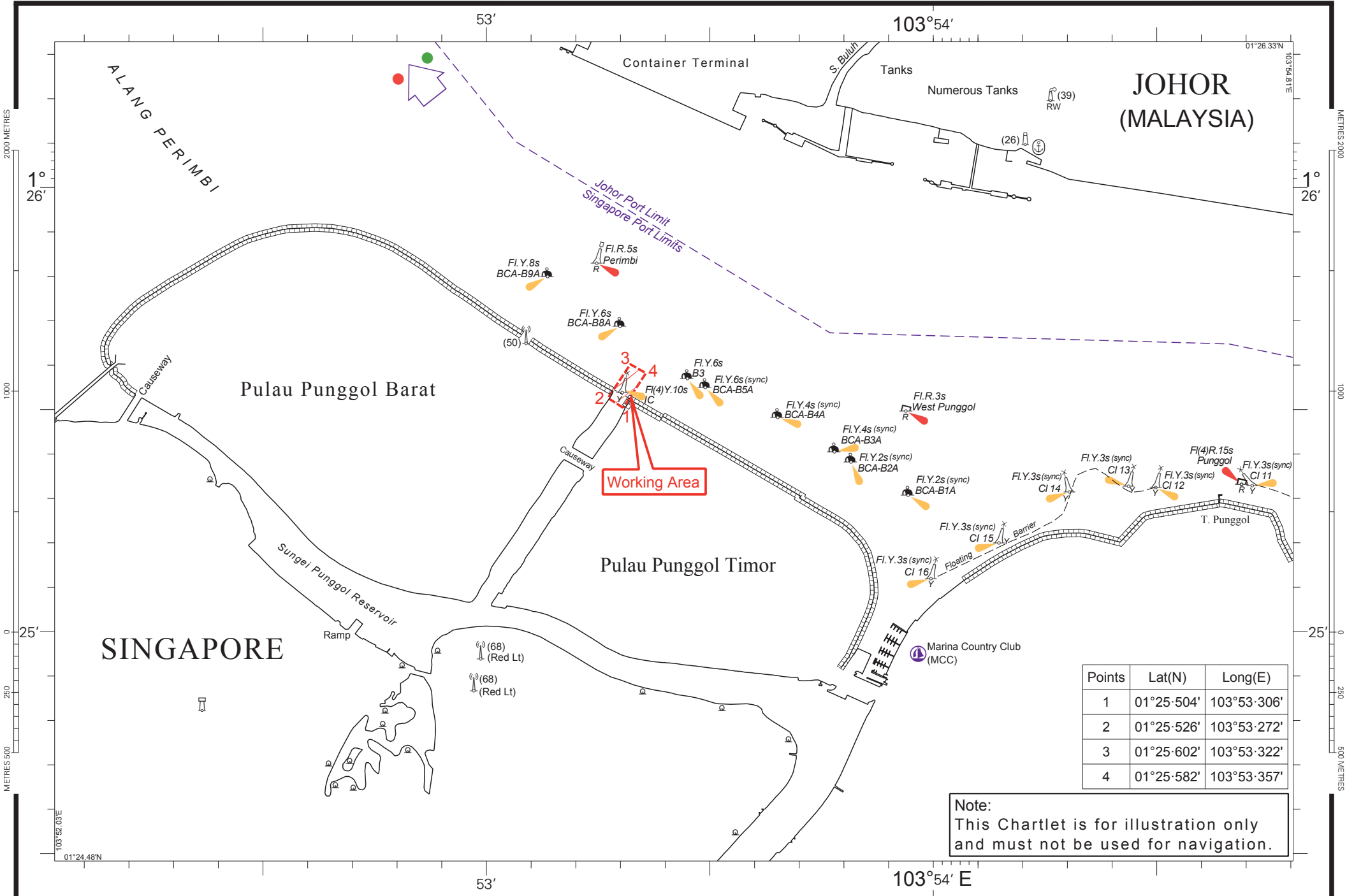
Safety boat will be deployed to warn other craft in the vicinity of the working area.

Further enquires relating to the project can be directed to Mr. Wong Wai Kin, Construction Manager at Tel: (65) 8837 7010 (email: wk.wong@yengtong.com).

- Caution : **When in the vicinity of the working area, mariners are reminded to:**
- a) Keep well clear and not to enter the working area;**
  - b) Maintain a proper lookout;**
  - c) Proceed at a safe speed and navigate with caution;**
  - d) Maintain a listening watch on VHF Channel 21 (Sembawang Control); and**
  - e) Communicate with Sembawang Control on VHF Channel 21 for assistance, if required.**

Please call Capt. Magesh Sivakumar at Tel: 6325 2473 or Marine Safety Control Centre (MSCC) Duty Officer at (65) 6325 2488/2489 for clarification on this Port Marine Notice.

CAPT CHONG JIA CHYUAN  
PORT MASTER  
MARITIME AND PORT AUTHORITY OF SINGAPORE



Points	Lat(N)	Long(E)
1	01°25'504'	103°53'306'
2	01°25'526'	103°53'272'
3	01°25'602'	103°53'322'
4	01°25'582'	103°53'357'

Note:  
This Chartlet is for illustration only  
and must not be used for navigation.