



MARITIME AND PORT AUTHORITY OF SINGAPORE

PORT MARINE NOTICE
NO 62 OF 2024

09 July 2024

Shipping Community
Harbour Craft Community
Pleasure Craft Community

MARINE SOIL INVESTIGATION FOR PROPOSED DEVELOPMENT PHASE 2

Applicable to: Mariners operating in the vicinity off Tanjong Pagar and Keppel Container Terminal

Date : With effect from 09 July 2024 to 31 Oct 2024.

Location : Off Tanjong Pagar and Keppel Container Terminal, within the working area bounded by the following co-ordinates (see attached chartlet):

<u>Working Area (WGS 84 Datum)</u>					
<u>Sector</u>	<u>Point</u>	<u>Latitude (N)</u>	<u>Longitude (E)</u>	<u>From</u>	<u>To</u>
D	1	01°16.353'	103°51.184'	09 July 2024	20 July 2024
	2	01°16.169'	103°51.238'		
	3	01°16.030'	103°51.297'		
	4	01°15.879'	103°51.465'		
	5	01°15.567'	103°51.234'		
	6	01°15.687'	103°51.127'		
E	1	01°15.648'	103°51.161'	21 July 2024	10 August 2024
	2	01°15.562'	103°51.069'		
	3	01°15.757'	103°50.894'		
	4	01°15.613'	103°50.761'		
	5	01°16.004'	103°50.350'		
	6	01°15.990'	103°49.940'		
	7	01°15.728'	103°49.487'		
	8	01°15.729'	103°49.445'		

<u>Bore Holes Within Working Area 'D' (WGS 84 Datum)</u>						
<u>Sector</u>	<u>Point</u>	<u>From</u>	<u>To</u>	<u>BH/CPT ID</u>	<u>Latitude (N)</u>	<u>Longitude (E)</u>
D	1	19 Jul 2024	20 Jul 2024	MBH-Z1-01A	1° 15.7440'	103° 51.1608'
	2	17 Jul 2024	18 Jul 2024	MBH-Z1-02A	1° 15.7799'	103° 51.2027'
	3	15 Jul 2024	16 Jul 2024	MBH-Z1-03A	1° 15.8115'	103° 51.2454'
	4	11 Jul 2024	12 Jul 2024	MBH-Z1-04A	1° 15.7655'	103° 51.3105'
	5	01 Jul 2024	2 Jul 2024	MBH-Z1-14A	1° 15.8899'	103° 51.4004'
	6	21 Jul 2024	22 Jul 2024	MBH-Z1-23	1° 15.6803'	103° 51.1505'
	7	19 Jul 2024	20 Jul 2024	MBH-Z1-24	1° 15.7158'	103° 51.1705'
	8	17 Jul 2024	18 Jul 2024	MBH-Z1-25	1° 15.7498'	103° 51.1927'
	9	13 Jul 2024	14 Jul 2024	MBH-Z1-26	1° 15.7247'	103° 51.3087'
	10	17 Jul 2024	17 Jul 2024	MCPT-Z1-01A	1° 15.7212'	103° 51.1462'
	11	16 Jul 2024	16 Jul 2024	MCPT-Z1-02A	1° 15.7635'	103° 51.1801'
	12	15 Jul 2024	15 Jul 2024	MCPT-Z1-03A	1° 15.7961'	103° 51.2231'
	13	13 Jul 2024	13 Jul 2024	MCPT-Z1-04A	1° 15.7907'	103° 51.2867'
	14	15 Jul 2024	15 Jul 2024	MCPT-Z1-05A	1° 15.7479'	103° 51.3297'
	15	01 Jul 2024	1 Jul 2024	MCPT-Z1-16A	1° 15.8654'	103° 51.4126'
	16	02 Jul 2024	2 Jul 2024	MCPT-Z1-17A	1° 15.9261'	103° 51.4025'
	17	08 Jul 2024	8 Jul 2024	MCPT-Z1-20	1° 15.9017'	103° 51.2791'
	18	07 Jul 2024	7 Jul 2024	MCPT-Z1-21	1° 15.8912'	103° 51.3280'
	19	06 Jul 2024	6 Jul 2024	MCPT-Z1-22	1° 15.8400'	103° 51.3420'
	20	05 Jul 2024	5 Jul 2024	MCPT-Z1-23	1° 15.7959'	103° 51.3735'
	21	07 Jul 2024	8 Jul 2024	MBH-Z2-A01	1° 15.8711'	103° 51.2892'
	22	03 Jul 2024	4 Jul 2024	MBH-Z2-A02	1° 15.9215'	103° 51.3594'
	23	07 Jul 2024	8 Jul 2024	MBH-Z2-A03	1° 15.8105'	103° 51.2792'
	24	05 Jul 2024	6 Jul 2024	MBH-Z2-A04	1° 15.8610'	103° 51.3494'
	25	13 Jul 2024	14 Jul 2024	MBH-Z2-A05	1° 15.7568'	103° 51.2838'
	26	09 Jul 2024	10 Jul 2024	MBH-Z2-A06	1° 15.8004'	103° 51.3394'
	27	05 Jul 2024	6 Jul 2024	MBH-Z2-A07	1° 15.8257'	103° 51.3745'
	28	01 Jul 2024	2 Jul 2024	MBH-Z2-A08	1° 15.8509'	103° 51.4096'
	29	11 Jul 2024	12 Jul 2024	MBH-Z2-A09	1° 15.7399'	103° 51.3294'
	30	09 Jul 2024	10 Jul 2024	MBH-Z2-A10	1° 15.7651'	103° 51.3645'
	31	01 Jul 2024	2 Jul 2024	MBH-Z3-01	1° 16.3405'	103° 51.1174'
	32	05 Jul 2024	6 Jul 2024	MBH-Z3-02	1° 16.2320'	103° 51.1174'
	33	03 Jul 2024	4 Jul 2024	MBH-Z3-03	1° 16.2862'	103° 51.1713'
	34	03 Jul 2024	4 Jul 2024	MBH-Z3-04	1° 16.2320'	103° 51.2145'
	35	07 Jul 2024	8 Jul 2024	MBH-Z3-14	1° 15.9606'	103° 51.2791'
	36	15 Jul 2024	16 Jul 2024	MBH-Z3-16	1° 15.7979'	103° 51.1174'
	37	10 Jul 2024	10 Jul 2024	MCPT-Z3-01	1° 16.2816'	103° 51.1174'
	38	11 Jul 2024	11 Jul 2024	MCPT-Z3-02	1° 16.3358'	103° 51.1713'
	39	09 Jul 2024	9 Jul 2024	MCPT-Z3-03	1° 16.2273'	103° 51.1713'
	40	12 Jul 2024	12 Jul 2024	MCPT-Z3-04	1° 16.2813'	103° 51.2013'
	41	04 Jul 2024	4 Jul 2024	MCPT-Z3-11	1° 16.0103'	103° 51.2791'
	42	19 Jul 2024	20 Jul 2024	MCPT-Z3-14	1° 15.9560'	103° 51.3331'

<u>Bore Holes Within Working Area 'E' (WGS 84 Datum)</u>						
<u>Sector</u>	<u>Point</u>	<u>From</u>	<u>To</u>	<u>BH/CPT ID</u>	<u>Latitude (N)</u>	<u>Longitude (E)</u>
E	43	23 Jul 2024	24 Jul 2024	MBH-Z1-18A	1° 15.6768'	103° 51.1191'
	44	19 Jul 2024	20 Jul 2024	MBH-Z1-19A	1° 15.6428'	103° 51.0968'
	45	23 Jul 2024	24 Jul 2024	MBH-Z1-20A	1° 15.6088'	103° 51.0746'
	46	21 Jul 2024	22 Jul 2024	MBH-Z1-21	1° 15.6124'	103° 51.1060'
	47	17 Jul 2024	18 Jul 2024	MBH-Z1-22	1° 15.6464'	103° 51.1282'
	48	21 Jul 2024	22 Jul 2024	MBH-Z1-30	1° 15.7161'	103° 50.6883'
	49	27 Jul 2024	28 Jul 2024	MBH-Z1-31	1° 15.7902'	103° 50.6095'
	50	23 Jul 2024	24 Jul 2024	MBH-Z1-32	1° 15.8643'	103° 50.5307'
	51	25 Jul 2024	26 Jul 2024	MBH-Z1-33	1° 15.9382'	103° 50.4517'
	52	27 Jul 2024	28 Jul 2024	MBH-Z1-34	1° 16.0125'	103° 50.3732'
	53	27 Jul 2024	26 Jul 2024	MBH-Z1-35	1° 16.0297'	103° 50.2838'
	54	29 Jul 2024	30 Jul 2024	MBH-Z1-36	1° 16.0258'	103° 50.1761'
	55	29 Jul 2024	30 Jul 2024	MBH-Z1-37	1° 16.0219'	103° 50.0683'
	56	29 Jul 2024	30 Jul 2024	MBH-Z1-38	1° 16.0179'	103° 49.9605'
	57	31 Jul 2024	1 Aug 2024	MBH-Z1-39	1° 15.9808'	103° 49.8699'
	58	23 Jul 2024	23 Jul 2024	MCPT-Z1-28	1° 15.6790'	103° 50.7277'
	59	24 Jul 2024	24 Jul 2024	MCPT-Z1-29	1° 15.7532'	103° 50.6489'
	60	25 Jul 2024	25 Jul 2024	MCPT-Z1-30	1° 15.8273'	103° 50.5701'
	61	26 Jul 2024	26 Jul 2024	MCPT-Z1-31	1° 15.9013'	103° 50.4913'
	62	27 Jul 2024	27 Jul 2024	MCPT-Z1-32	1° 15.9755'	103° 50.4125'
	63	28 Jul 2024	28 Jul 2024	MCPT-Z1-33	1° 16.0316'	103° 50.3377'
	64	29 Jul 2024	29 Jul 2024	MCPT-Z1-34	1° 16.0277'	103° 50.2299'
	65	30 Jul 2024	30 Jul 2024	MCPT-Z1-35	1° 16.0237'	103° 50.1222'
	66	31 Jul 2024	31 Jul 2024	MCPT-Z1-36	1° 16.0199'	103° 50.0144'
	67	1 Aug 2024	1 Aug 2024	MCPT-Z1-37	1° 16.0075'	103° 49.9168'
	68	2 Aug 2024	2 Aug 2024	MCPT-Z1-38	1° 15.9543'	103° 49.8235'
	69	9 Jul 2024	10 Jul 2024	MBH-Z4-01	1° 15.6871'	103° 50.9933'
	70	25 Jul 2024	26 Jul 2024	MBH-Z4-02	1° 15.9268'	103° 50.6965'
	71	11 Jul 2024	12 Jul 2024	MBH-Z4-03	1° 15.8421'	103° 50.7633'
	72	13 Jul 2024	14 Jul 2024	MBH-Z4-04	1° 15.7569'	103° 50.8305'
	73	25 Jul 2024	26 Jul 2024	MBH-Z4-05	1° 15.6771'	103° 50.7830'
	74	14 Jul 2024	14 Jul 2024	MCPT-Z4-01	1° 15.6427'	103° 51.0331'
	75	18 Jul 2024	18 Jul 2024	MCPT-Z4-02	1° 15.7667'	103° 50.9219'
	76	19 Jul 2024	19 Jul 2024	MCPT-Z4-03	1° 15.8473'	103° 50.8496'
	77	20 Jul 2024	20 Jul 2024	MCPT-Z4-04	1° 15.9266'	103° 50.7761'
	78	21 Jul 2024	21 Jul 2024	MCPT-Z4-05	1° 15.7166'	103° 50.8195'

Working Hours : 24 hours daily including Sundays and Public Holidays.

Craft

<u>Name</u>	<u>Harbour Craft Licence No.</u>	<u>Description</u>
ET LIFT 5	SR 3089I	Jack-Up Barge
ENG TOU 284	SR 3685D	Work Barge
HDJ 3	SR 1888J	Jack-Up Barge
GULBIS	SR 2886Z	Jack-Up Barge
KS8	SR 2955F	Jack-Up Barge
KM 1	ST 0797E	Tug Boat
ST 689	ST 0689H	Tug Boat
SKY 23	ST 1090I	Tug Boat
KM ROMEO	SC 6000G	Supply Vessel
PENTA 7	SR 4064I	Workboat
SALVERN	SR 2421Z	Utility Vessel
KM MIKE	SC 8866A	Supply Vessel
KM TANGO	SC 7000B	Supply Vessel
KM UNIFORM	SC 8668E	Supply Vessel

These craft will exhibit the appropriate local and international day and night signals.

Details

: The soil investigation work will be carried out by spud / jack-up barges assisted by tug boats. The safety zone is a circular area of 25m radius centered at the jack up barges.

Safety boats will be in attendance to warn and direct craft in the vicinity to keep clear of working area.

Further enquires relating to the project can be directed to Mr. Nel Cortes, Project Manager at Tel: (65) 9729-4150 (email: nel.cortes@element.com)

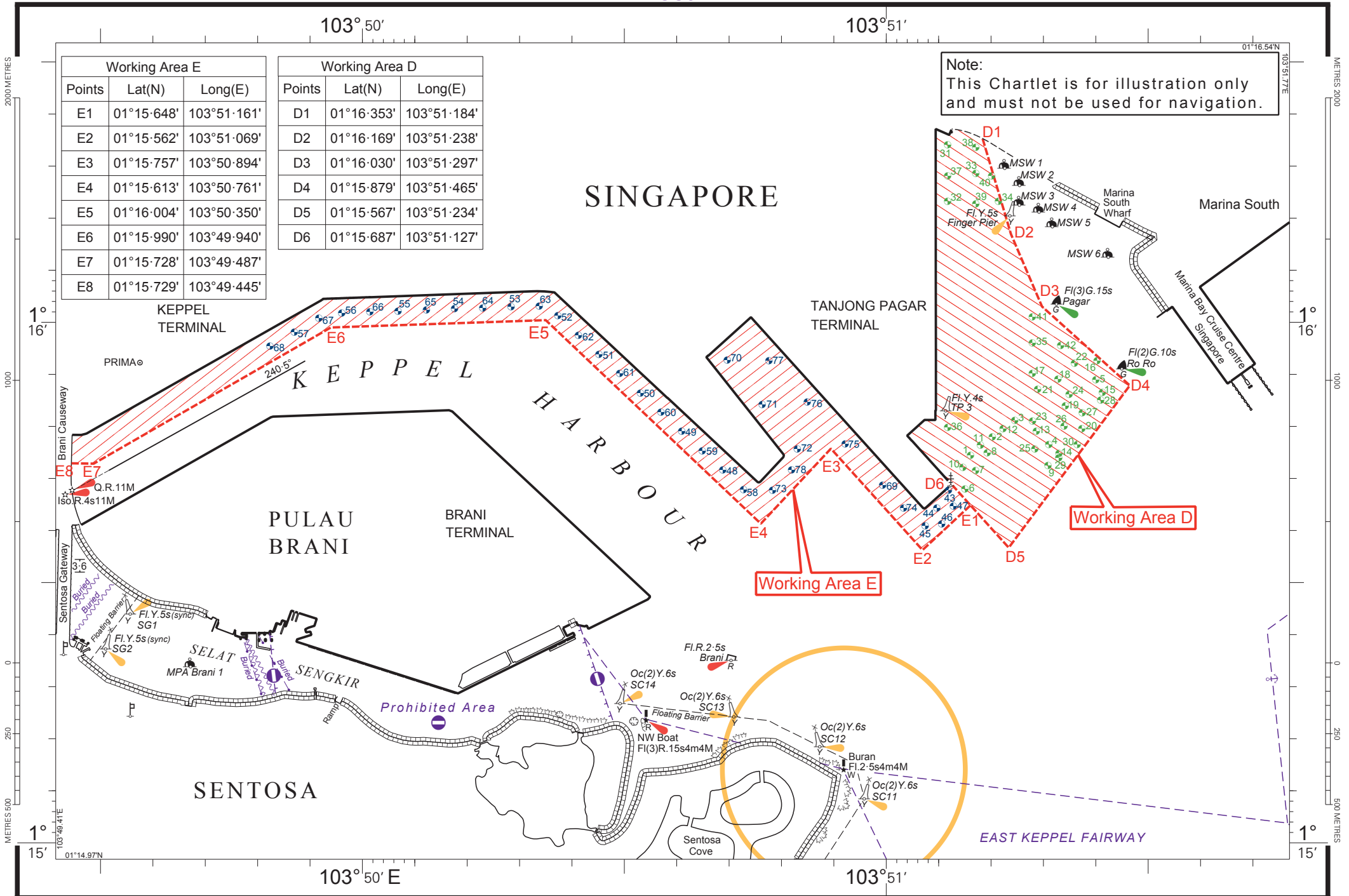
Caution

: **When in the vicinity of the working area, mariners are reminded to:**

- a) **Keep well clear and not to enter the working area;**
- b) **Maintain a proper lookout;**
- c) **Proceed at a safe speed and navigate with caution;**
- d) **Maintain a listening watch on VHF Channel 05 (Keppel Control); and**
- e) **Communicate with Keppel Control on VHF Channel 05 for assistance, if required.**

Please call Capt. Magesh Sivakumar at Tel: (65) 6325-2473 or Marine Safety Control Centre (MSCC) Duty Officer at (65) 6325 2488 for clarification on this Port Marine Notice.

CAPT CHONG JIA CHYUAN
PORT MASTER
MARITIME AND PORT AUTHORITY OF SINGAPORE



Working Area E		
Points	Lat(N)	Long(E)
E1	01°15'648"	103°51'161"
E2	01°15'562"	103°51'069"
E3	01°15'757"	103°50'894"
E4	01°15'613"	103°50'761"
E5	01°16'004"	103°50'350"
E6	01°15'990"	103°49'940"
E7	01°15'728"	103°49'487"
E8	01°15'729"	103°49'445"

Working Area D		
Points	Lat(N)	Long(E)
D1	01°16'353"	103°51'184"
D2	01°16'169"	103°51'238"
D3	01°16'030"	103°51'297"
D4	01°15'879"	103°51'465"
D5	01°15'567"	103°51'234"
D6	01°15'687"	103°51'127"

Note:
This Chartlet is for illustration only
and must not be used for navigation.