



MARITIME AND PORT AUTHORITY OF SINGAPORE

PORT MARINE NOTICE
NO. 69 OF 2024

31 Jul 2024

Shipping Community
Harbour Craft Community
Pleasure Craft Community

EXTENDED WORKING AREA FOR SUPPLY AND DELIVERY OF SAND AT CHANGI EAST DEPOSITION AREA

Applicable to: Mariners operating in the vicinity North of Johor Shoal

This is a revision of Port Marine Notice No. 030 of 2024. The working period has been extended, and the chartlet and the list of craft have been updated.

Date : With effect from 31 Jul 2024 to 31 Jan 2025

Location : North of Johor Shoal, within the working area bounded by the following co-ordinates (see attached chartlet):

(WGS 84 Datum)

<u>Point</u>	<u>Latitude (N)</u>	<u>Longitude (E)</u>
1	01°19.541'	104°01.956'
2	01°19.539'	104°02.431'
3	01°19.393'	104°02.435'
4	01°19.389'	104°02.763'
5	01°19.443'	104°02.764'
6	01°19.435'	104°03.484'
7	01°19.445'	104°03.505'
8	01°20.057'	104°02.952'
9	01°20.016'	104°02.918'
10	01°20.048'	104°02.875'

11	01°20.131'	104°02.943'
12	01°20.361'	104°02.744'
13	01°20.362'	104°02.319'
14	01°20.271'	104°02.118'
15	01°20.103'	104°01.902'
16	01°19.863'	104°01.902'
17	01°19.863'	104°01.956'

Working Hours : 24 hours daily including Sundays and Public Holidays.

Craft : Please refer to **ANNEX** for the list of craft approved for deployment in the working area.

These craft will exhibit the appropriate local and international day and night signals.

Details : The works involve discharging of sand by Self-Discharging Sand Carriers (SDSC) and Trailer Suction Hopper Dredger (TSHD) at Changi East Deposition Area (CEDA). Soil Investigation work will be carried out by Jack -up barge assisted by tug boat.

A safety boat will be deployed to warn other craft in the vicinity of the working area.

Further enquires relating to the project can be directed to Mr Cheang You Kong, Project Manager at (Tel: (65) 9678-4131
email: cheangyk@xinshaholding.com)

Caution : **When in the vicinity of the working area, mariners are reminded to:**

- a) **Keep well clear and not to enter the working area;**
- b) **Maintain a proper lookout;**
- c) **Proceed at a safe speed and navigate with caution;**
- d) **Maintain a listening watch on VHF Channel 21 (Sembawang Control); and**
- e) **Communicate with Sembawang Control on VHF Channel 21 for assistance, if required.**

Please call Capt. Magesh Sivakumar at Tel: 6325 2473 or Marine Safety Control Centre (MSCC) Duty Officer Tel: 6325 2488 / 2489 for clarification on this Port Marine Notice

CAPT CHONG JIA CHYUAN
PORT MASTER
MARITIME AND PORT AUTHORITY OF SINGAPORE

ANNEX

SUPPLY AND DELIVERY OF SAND AT CHANGI EAST DEPOSITION AREA (CEDA) - CRAFT APPROVED FOR DEPLOYMENT IN THE WORKING AREA

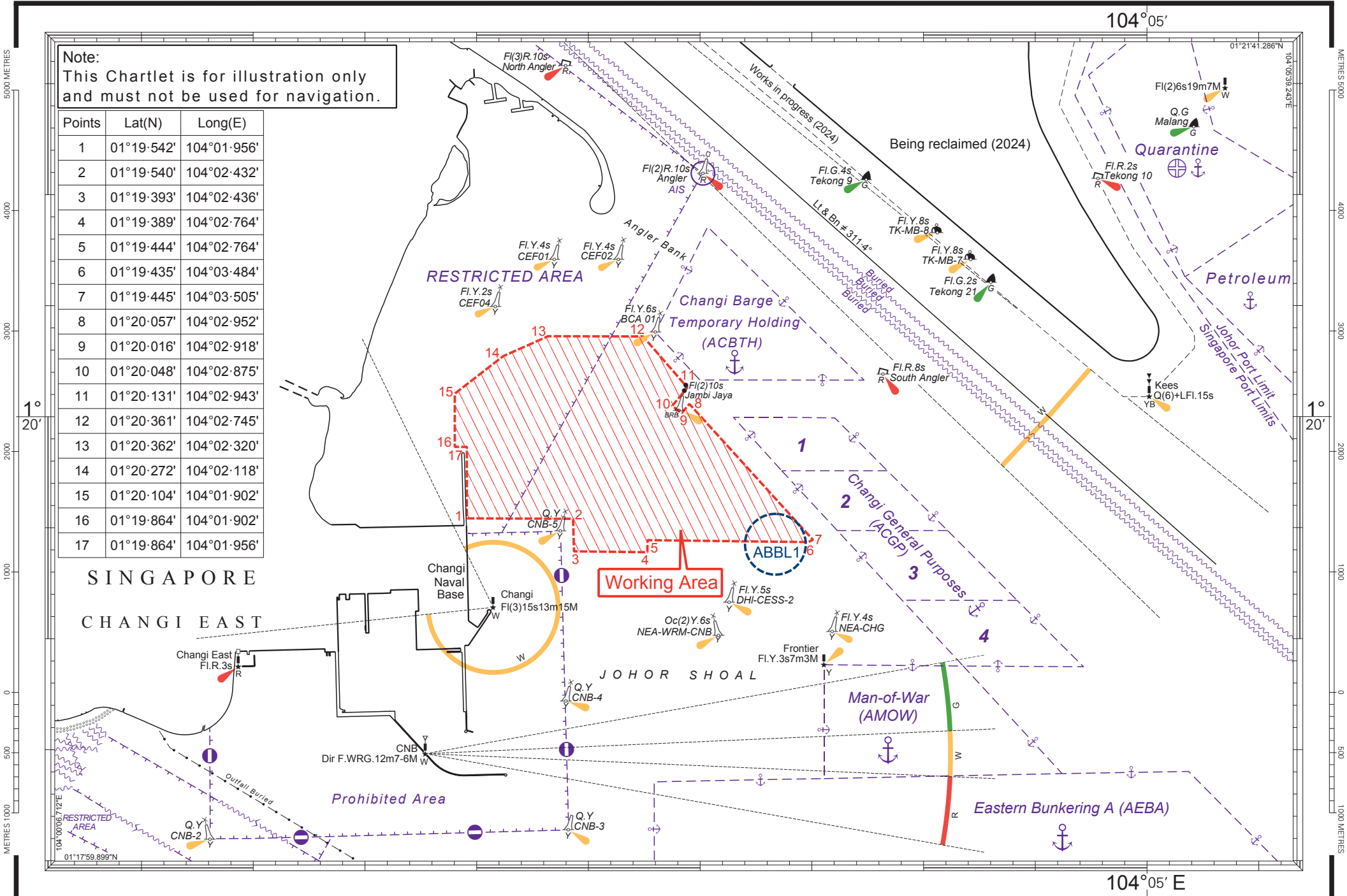
<u>Name</u>	<u>Harbor Craft License No</u>	<u>Description</u>
AXCEL SPLENDOUR	SP 1369 C	PASSENGER LAUNCH
AXCEL STELLAR	SP 1372 C	PASSENGER LAUNCH
AXCEL SUPREME	SP 1422 C	PASSENGER LAUNCH
DHI ATLAS	SR 4009F	UTILITY VESSEL
DHI EXPLORER 7	SR 3076G	WORKBOAT
DHI EXPLORER II	SR 2638G	WORKBOAT
DHI EXPLORER III	SR 2474J	WORKBOAT
DHI EXPLORER IV	SR 2805C	WORKBOAT
DIAMOND 123	SR 3390A	WORK BARGE
EFFORT 1000	SR 3657 I	WORKBOAT
EH BRANI	SR3451G	WORKBOAT
EH ILLUMINATOR	SR3507F	WORKBOAT
EH IMMI COMMANDER	SR2956	WORKBOAT
EH PEDRA BRANCA	SR4110F	WORKBOAT
EH SEEKER	SR3144E	WORKBOAT
ENGHUP CONTROLLER	SR3427D	WORKBOAT
ENGHUP GALLANT	ST 1526I	TUG BOAT
ENGHUP HERALD	ST 1539J	TUG BOAT
ENGHUP POLARIS	ST1488B	TUG BOAT
ENGHUP PUSHER	ST1347I	TUG BOAT
ENGHUP RESPOND	ST1359B	TUG BOAT
ENGHUP TENDER	ST1455F	TUG BOAT

<u>Name</u>	<u>Harbor Craft License No</u>	<u>Description</u>
ENGHUP VALOUR	ST1445I	TUG BOAT
KM7	SR 3535A	WORKBOAT
KST 31	ST 0871H	TUG BOAT
KST SKY	ST 1243Z	TUG BOAT
KST STELLAR	ST 1286C	TUG BOAT
KST SUCCESS	ST 1457B	TUG BOAT
KST SUMMIT	ST 1458J	TUG BOAT
KST SUPER	ST 1244H	TUG BOAT
PTC7	SR 2968H	CRANE BARGE
SL-T1	SR 3321I	HOPPER BARGE
SL-T12	SR 3581E	HOPPER BARGE
SL-T13	SR 3582C	HOPPER BARGE
SL-T14	SR 3274C	HOPPER BARGE
SL-T2	SR 3579C	HOPPER BARGE
SP 9562B	SP9562B	PASSENGER LAUNCH
STL H 16	SR 3644G	HOPPER BARGE
STL H1	SR 3478I	HOPPER BARGE
STL H17	SR 3618H	HOPPER BARGE
STL H18	SR 3614E	HOPPER BARGE
STL H2	SR 3479G	HOPPER BARGE
STL H3	SR 3480J	HOPPER BARGE
STL H4	SR 3557B	HOPPER BARGE
STL H9	SR 3647A	HOPPER BARGE
STL P1	SR 3505Z	WORKBOAT
STL P2	SR 3521A	WORKBOAT
STL PT1	ST 1531E	TUGBOAT
STL PT2	ST 1533A	TUGBOAT

<u>Name</u>	<u>Harbor Craft License No</u>	<u>Description</u>
STL PT3	ST 1544G	TUGBOAT
STL PT4	SR 3860A	TUGBOAT
STL V	SR 3119D	HOPPER BARGE
STL WB1	SR 3569F	WORK BARGE

Note:
This Chartlet is for illustration only
and must not be used for navigation.

Points	Lat(N)	Long(E)
1	01°19'542'	104°01'956'
2	01°19'540'	104°02'432'
3	01°19'393'	104°02'436'
4	01°19'389'	104°02'764'
5	01°19'444'	104°02'764'
6	01°19'435'	104°03'484'
7	01°19'445'	104°03'505'
8	01°20'057'	104°02'952'
9	01°20'016'	104°02'918'
10	01°20'048'	104°02'875'
11	01°20'131'	104°02'943'
12	01°20'361'	104°02'745'
13	01°20'362'	104°02'320'
14	01°20'272'	104°02'118'
15	01°20'104'	104°01'902'
16	01°19'864'	104°01'902'
17	01°19'864'	104°01'956'



SINGAPORE
CHANGI EAST

Working Area

Prohibited Area

Man-of-War (AMOW)

Eastern Bunkering A (AEBA)

RESTRICTED AREA

Changi Barge Temporary Holding (ACBTH)

Changi General Purposes (ACGP)

Quarantine

Petroleum

Johor Port Limit
Singapore Port Limits