



MARITIME AND PORT AUTHORITY OF SINGAPORE

PORT MARINE NOTICE
NO. 26 OF 2025

07 March 2025

Shipping Community
Harbour Craft Community
Pleasure Craft Community

ANCHORING AND MOVEMENT OF VESSELS OFF TUAS VIEW EXTENSION

Applicable to: Mariners operating off Tuas View Extension and transiting Temasek Fairway

This is a revision of Port Marine Notice No. 77 of 2024. The working period has been extended, chartlet has been updated.

Date : With effect from 07 March 2025 to 07 September 2025

Location : In the vicinity of Tuas View Extension, at the following coordinates with safety radius (see attached chartlet):

(WGS 84 Datum)

<u>Point</u>	<u>Latitude (N)</u>	<u>Longitude (E)</u>	<u>Safety Radius (m)</u>
ATWJ2	01° 13.421'	103° 38.460'	225

Working Hours : 24 hours daily including Sundays and Public Holidays

Details : Bulk carriers will be anchoring and discharging sand at the break bulking slots off Tuas View Extension. The safety radius is 225m from the center of point ATWJ2.

The arrival and departure movements of bulk carriers will take place during daylight hours.

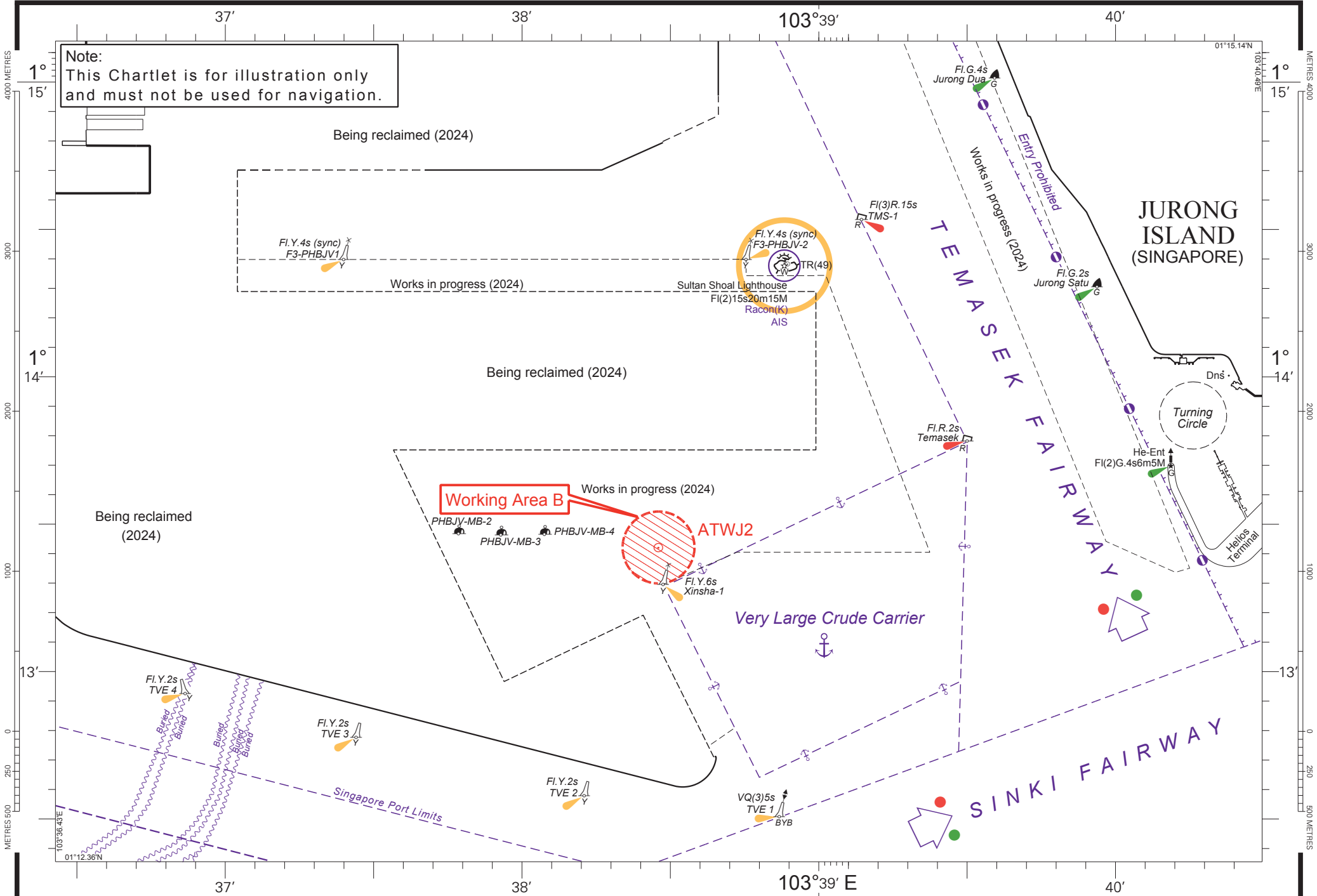
Further enquires relating to the project can be directed to:
Mr Andrew Lee, Project Manager
Tel: (65) 9777 7896, email: andrewlee@helm-marine.com

Caution : **When in the vicinity of the working area, mariners are reminded to:**

- 1) Keep well clear and not to enter the working area.**
- 2) Maintain a proper lookout;**
- 3) Proceed at a safe speed and navigate with caution;**
- 4) Maintain a listening watch on VHF Channel 22 (Jurong Control) and VHF Channel 68 (West Control);**
- 5) Communicate with Jurong Control on VHF Channel 22 or West Control on VHF Channel 68 for assistance, if required.**

Please call Capt. Faroque Hossain Sikder at (65) 6325 2472 or Marine Safety Control Centre (MSCC) Duty Officer at (65) 6325 2488/2489 for clarification on this Port Marine Notice.

CHONG JIA CHYUAN
PORT MASTER
MARITIME AND PORT AUTHORITY OF SINGAPORE



Note:
This Chartlet is for illustration only
and must not be used for navigation.