



## MARITIME AND PORT AUTHORITY OF SINGAPORE

### PORT MARINE NOTICE NO. 29 OF 2026

12 Feb 2026

Shipping Community  
Harbour Craft Community  
Pleasure Craft Community

### MARINE SOIL INVESTIGATION WORKS IN TUAS SOUTH BOULEVARD

**Applicable to:** Mariners operating in the vicinity of Tuas South boulevard.

Date : With effect from 23 Feb 2026 to 31 Mar 2026.

Location : In Tuas South Boulevard, at the following coordinates (see attached Chartlet):

(WGS 84 Datum)

<u>Point</u>	<u>Latitude (N)</u>	<u>Longitude (E)</u>
BH1	1° 14.791'	103° 36.351'
BH2	1° 14.791'	103° 36.332'
BH3	1° 15.168'	103° 36.351'
BH4	1° 15.168'	103° 36.332'

Working Hours : 24 hours daily, including Sundays and public holidays.

Craft:

<u>Name of Safety Craft</u>	<u>Harbour Craft Licence No.</u>	<u>Description</u>
KM1	ST0797E	TUG BOAT
KM38	ST0761D	TUG BOAT

KM NOVEMBER	SC7788J	PASSENGER BOAT
KM OSCAR	SC6868G	PASSENGER BOAT (SAFETY BOAT)
SIPL5	SR 2732 D	JACK-UP BARGE
SK6	ST0569G	TUG BOAT
ST0689H	ST0689H	TUG BOAT

These crafts will exhibit the appropriate local and international day and night signals.

Details : The soil investigation work will be carried out by jack-up barge upon completion of borehole drilling. Tugboats will be used for shifting the jack-up barge between the boreholes.

Safety boat will be deployed to warn other craft in the vicinity of the working area.

Further enquiries relating to the project can be directed to:

Mr Scott Cheng, Project Manager at

Tel: 9007-5415

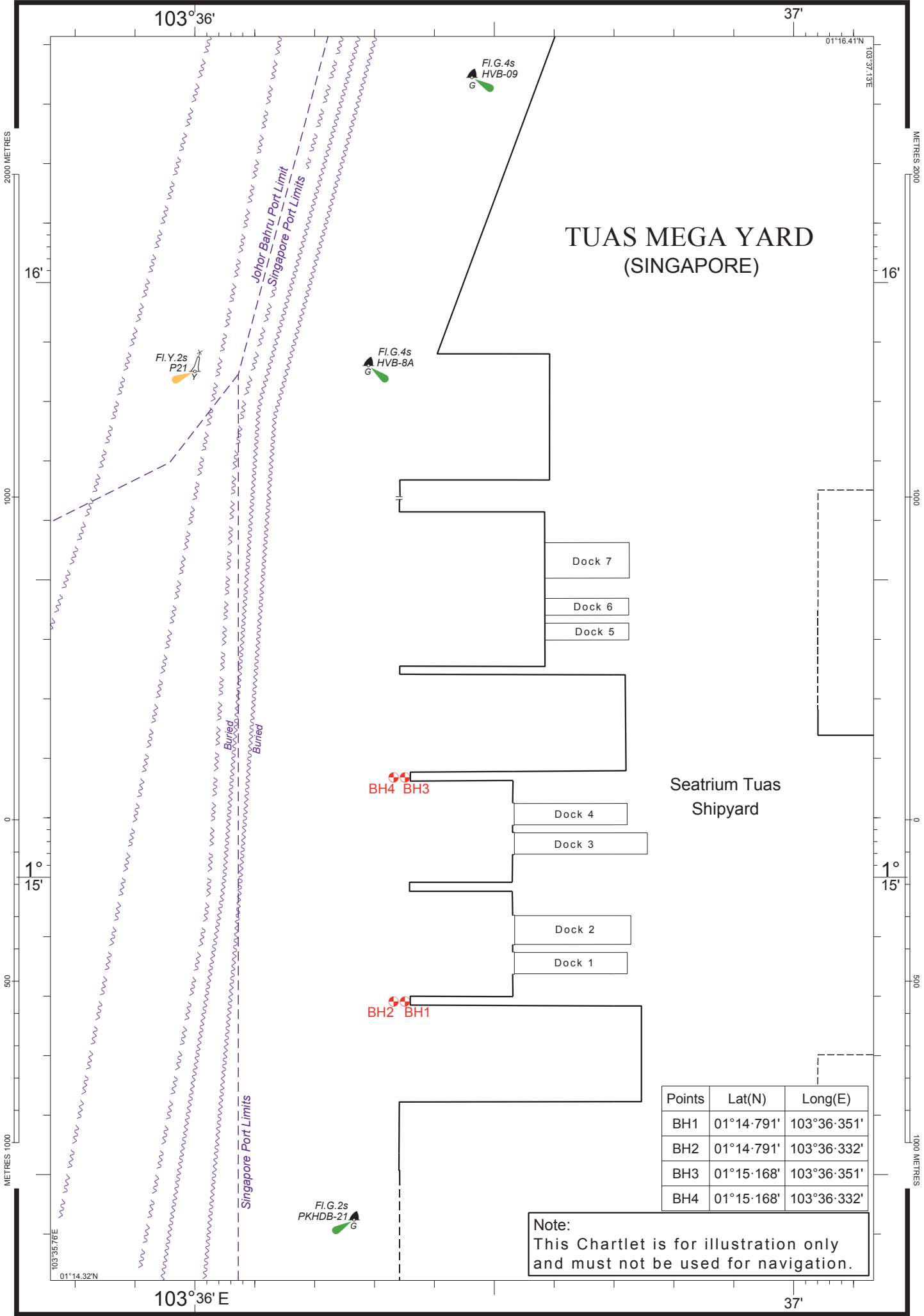
Email: [scott.cheng@soilinvestigation.com.sg](mailto:scott.cheng@soilinvestigation.com.sg)

Caution : **When in the vicinity of the working area, mariners are reminded to:**

- a) Keep well clear and not to enter the working area;**
- b) Maintain a proper lookout;**
- c) Proceed at a safe speed and navigate with caution;**
- d) Maintain a listening watch on VHF Channel 22 (Jurong Control), and communicate with Jurong control for assistance, if required.**

Please call Capt. Hazel Leo at Tel: +65 6325 2465 or Marine Safety Control Centre (MSCC) Duty Officer at +65 6325 2488/2489 for clarification on this Port Marine Notice.

CAPT CHONG JIA CHYUAN  
PORT MASTER  
MARITIME AND PORT AUTHORITY OF SINGAPORE



Points	Lat(N)	Long(E)
BH1	01°14.791'	103°36.351'
BH2	01°14.791'	103°36.332'
BH3	01°15.168'	103°36.351'
BH4	01°15.168'	103°36.332'

Note:  
This Chartlet is for illustration only  
and must not be used for navigation.