



MARITIME AND PORT AUTHORITY OF SINGAPORE

PORT MARINE NOTICE  
NO. 53 OF 2026

06 Apr 2026

Shipping Community  
Harbour Craft Community  
Pleasure Craft Community

**REMOVAL AND INSTALLATION WORKS FOR NEW FLOATING PONTOON JETTY AT  
PULAU UBIN**

**Applicable to:** Mariners operating in the vicinity of Pulau Ubin.

Date : With effect from 02 Apr 2026 to 01 Oct 2026.

Location : At sea within the working area bounded by the following coordinates (see attached chartlet):

<u>Point</u>	<u>Latitude (N)</u>	<u>Longitude (E)</u>
1	01°24.350'	103°57.131'
2	01°24.324'	103°57.224'
3	01°24.301'	103°57.261'
4	01°24.258'	103°57.291'
5	01°24.258'	103°57.131'

Working Hours : 0700 – 2000 hours (Monday to Saturday). Working hours may differ subject to site circumstances.

Craft: Please refer to **ANNEX A** for the list of crafts approved for deployment in the working area.

These crafts will exhibit the appropriate local and international day and night signals.

Details : The removal of existing structures and piles, and the installation of marine pylon foundations and rock revetment for new erection of a floating pontoon jetty at Pulau Ubin. The works will be carried out using crane barge and flat-top barge. Workboats and tugboats will be deployed to assist with the positioning of the crane barge and flat-top material barge.

A safety boat will be deployed in the vicinity and in attendance at all times to warn and redirect crafts to keep clear of working area.

Further general enquiries relating to the project can be directed to Mr. Francis Ng Teck Jin, Project Manager at  
Tel: 9223 1501 (email: francis@mtc.com.sg)

Caution : **When in the vicinity of the working area, mariners are reminded to:**

- a) **Keep well clear and not to enter the working area;**
- b) **Maintain a proper lookout;**
- c) **Proceed at a safe speed and navigate with caution;**
- d) **Maintain a listening watch on VHF Channel 21 (Sembawang Control); and communicate with Sembawang Control for assistance, if required.**

Please call Capt. Hazel Leo at Tel: +65 6325 2465 or Marine Safety Control Centre (MSCC) Duty Officer at +65 6325 2488/2489 for clarification on this Port Marine Notice.

CAPT CHONG JIA CHYUAN  
PORT MASTER  
MARITIME AND PORT AUTHORITY OF SINGAPORE

## ANNEX A

## CRAFT APPROVED FOR DEPLOYMENT IN THE WORKING AREA

<u>Name</u>	<u>Harbour Craft License No</u>	<u>Description</u>
BS ATLANTIC	ST 1378I	TUG BOAT
KMT ALICE	ST 1640J	TUG BOAT
KMT 5	SC 4799 Z	BARGE
KMT 7	SC 4867H	BARGE
KMT 9	SC 4717E	BARGE
KMT JENNY	ST 1559E	TUG BOAT
KMT VISTA	ST 1310Z	TUG BOAT
MAKO 8	ST 0995 A	TUG BOAT
MAKO 9	ST 0914E	TUG BOAT
MTC 2	SR 3554H	250T CRANE BARGE
MTC 6	SR 3154 B	WORK BOAT
MTC V	SR 3786 I	280T CRANE BARGE
MTC TIGA	SR 3589 J	WORK BOAT
POE CB6	SR 4134 C	250T CRANE BARGE
POLITE VII	ST 1398 C	TUG BOAT
POLITE VIII	ST 1415 G	TUG BOAT
POLITE X	ST 1399 A	TUG BOAT
QSA PURARI	ST 1277 D	TUG BOAT
QSA 138	ST 1625 G	TUG BOAT
SR 3861 Z	SR 3861 Z	SAFETY BOAT / WORK BOAT
STK 3	ST 1396 G	TUG BOAT
STK 5	ST 1412 B	TUG BOAT
STK 10	ST 1517 Z	TUG BOAT
STK 11	ST 1248 J	TUG BOAT
STK 13	ST 1156 E	TUG BOAT
SR 3861 Z	SR 3861 Z	SAFETY BOAT / WORK BOAT

103°57'

Points	Lat(N)	Long(E)
1	01°24'350"	103°57'131"
2	01°24'324"	103°57'224"
3	01°24'301"	103°57'261"
4	01°24'258"	103°57'291"
5	01°24'258"	103°57'131"

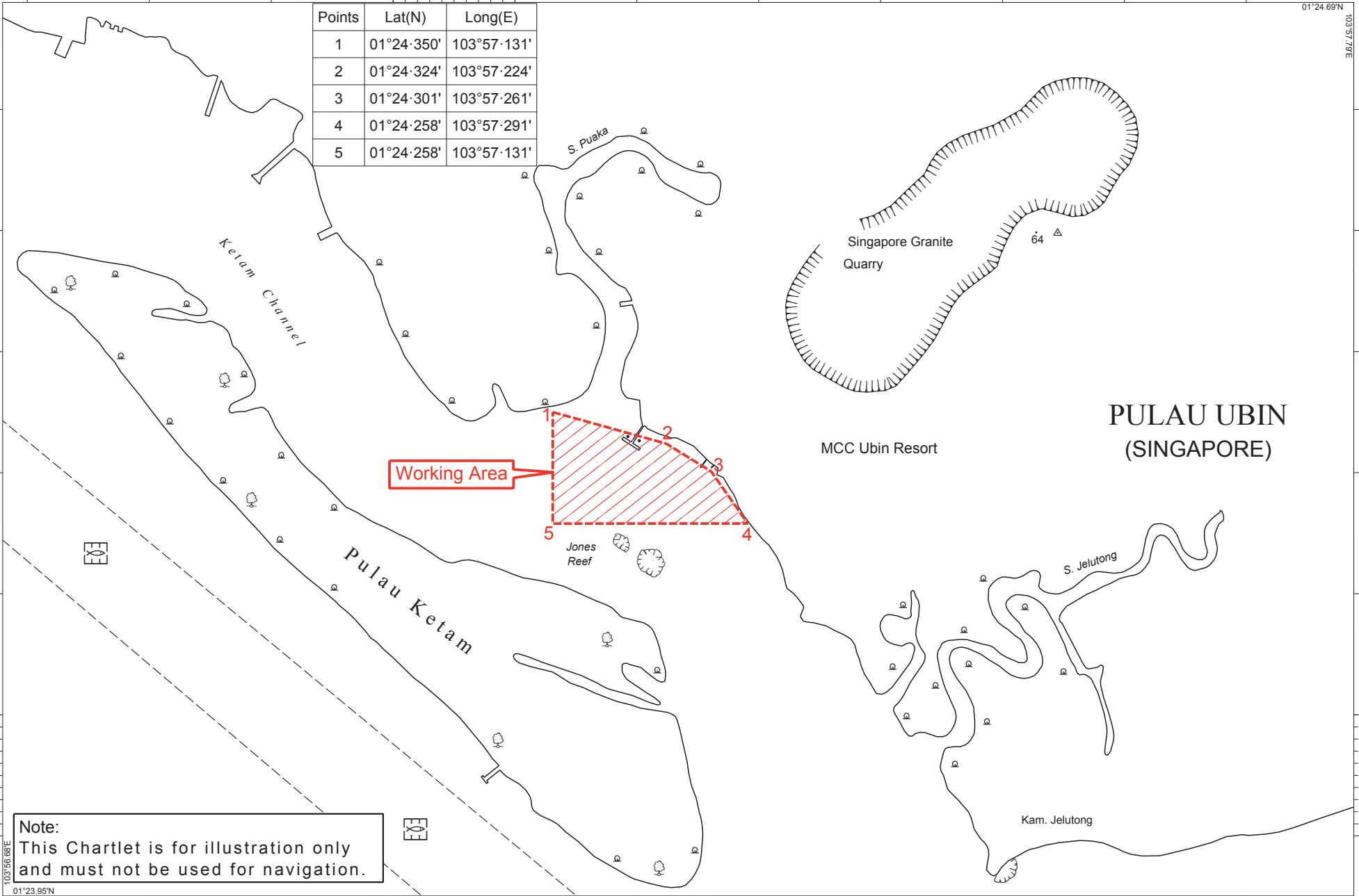
1000 METRES

500

0

1°

24'



01°24.69'N  
103°57.79'E

METRES 1000

500

0

1°

24'

Working Area

Note:  
This Chartlet is for illustration only  
and must not be used for navigation.

103°57' E