



## MARITIME AND PORT AUTHORITY OF SINGAPORE

### PORT MARINE NOTICE NO. 54 OF 2026

07 Apr 2026

Shipping Community  
Harbour Craft Community  
Pleasure Craft Community

### NAVIGATION RESTRICTIONS UNDER THE RTS LINK

**Applicable to:** Mariners operating in the vicinity of the RTS Link.

This PMN supersedes Port Marine Notice No. 136 of 2025. The working period has been extended, and the chartlet has been renewed.

With effect from 13 Apr 2026 to 12 Oct 2026, a navigation channel of 75 meters in width is established under the RTS Link within the Singapore Port Limits.

Vessels with beams of more than 15 meters and heights of more than 23 meters are to stay away from the navigation channel and the entire length of the RTS Link.

The navigation channel is marked by four buoys (see attached chartlet). Details and characteristics of the buoys are as shown below:

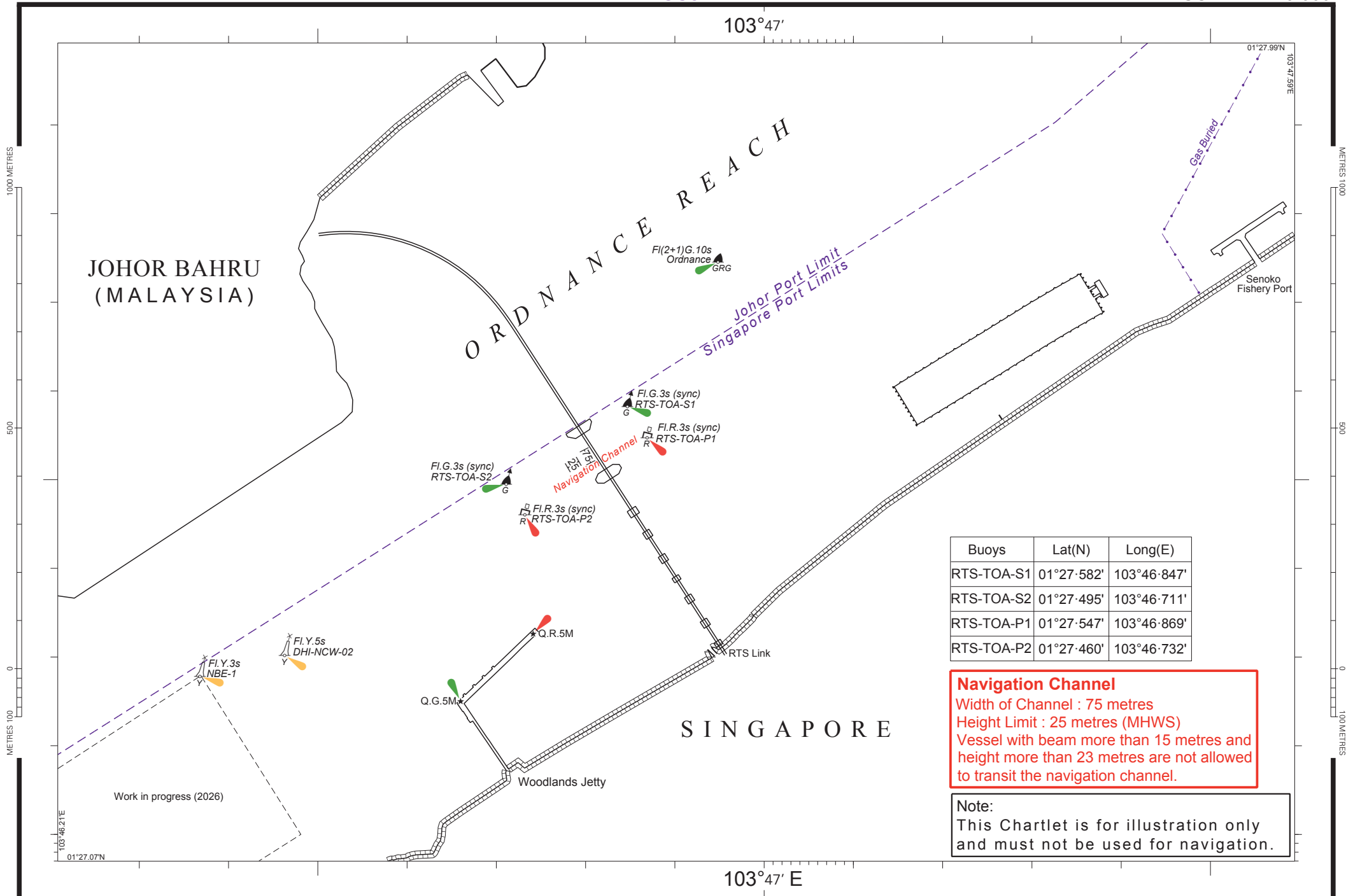
<u>Position of buoys marking navigation channel under RTS Link</u>			
<u>Name</u>	<u>Latitude (N)</u>	<u>Longitude (E)</u>	<u>Light Characteristics</u>
RTS-TOA-S1	01° 27.582'	103°46'847'	Fl.G.3s
RTS-TOA-S2	01° 27.495'	103°46'711'	Fl.G.3s
RTS-TOA-P1	01° 27.547'	103°46'869'	Fl.R.3s
RTS-TOA-P2	01° 27.460'	103°46'732'	Fl.R.3s

When navigating in the vicinity of the RTS Link, mariners are reminded to:

- a) Maintain a proper lookout;
- b) Proceed at a safe speed and navigate with caution;
- c) Maintain a listening watch on VHF Channel 21 (Sembawang Control); and Communicate with Sembawang Control for assistance, if required.

Please call Capt. Hazel Leo at Tel: +65 6325 2465 or Marine Safety Control Centre (MSCC) Duty Officer at +65 6325 2488/2489 for clarification on this Port Marine Notice.

CAPT CHONG JIA CHYUAN  
PORT MASTER  
MARITIME AND PORT AUTHORITY OF SINGAPORE



Buoys	Lat(N)	Long(E)
RTS-TOA-S1	01°27'582'	103°46'847'
RTS-TOA-S2	01°27'495'	103°46'711'
RTS-TOA-P1	01°27'547'	103°46'869'
RTS-TOA-P2	01°27'460'	103°46'732'

**Navigation Channel**  
 Width of Channel : 75 metres  
 Height Limit : 25 metres (MHWS)  
 Vessel with beam more than 15 metres and height more than 23 metres are not allowed to transit the navigation channel.

**Note:**  
 This Chartlet is for illustration only and must not be used for navigation.