



MARITIME AND PORT AUTHORITY OF SINGAPORE

PORT MARINE NOTICE
NO. 65 OF 2026

29 Apr 2026

Shipping Community
Harbour Craft Community
Pleasure Craft Community

ANCHORING OF VESSELS AT CHANGI EAST DEPOSITION AREA (CEDA)

Applicable to: Mariners operating in the vicinity North of Johor Shoal

This is a revision of Port Marine No. 147 of 2025. The working period has been extended and the chartlet has been revised.

Date : With effect from 20 May 2026 to 19 Nov 2026

Location : North of Johor Shoal, at the following coordinates (see attached chartlet):

CEDA Working Area (WGS 84 Datum)

<u>Point</u>	<u>Latitude (N)</u>	<u>Longitude (E)</u>
1	01°19·680'	104°01·373'
2	01°19·607'	104°01·551'
3	01°19·608'	104°01·905'
4	01°19·864'	104°01·902'
5	01°19·864'	104°01·956'
6	01°19·542'	104°01·956'
7	01°19·540'	104°02·432'
8	01°19·393'	104°02·436'
9	01°19·389'	104°02·764'
10	01°19·444'	104°02·764'
11	01°19·435'	104°03·484'
12	01°19·445'	104°03·505'
13	01°20·057'	104°02·952'
14	01°20·016'	104°02·918'

15	01°20·048'	104°02·875'
16	01°20·131'	104°02·943'
17	01°20·361'	104°02·745'
18	01°20·362'	104°02·320'
19	01°20·318'	104°02·221'
20	01°21·097'	104°02·097'
21	01°21·118'	104°02·050'
22	01°20·874'	104°01·947'
23	01°20·899'	104°01·890'

Break Bulking Slot ABBL1 (WGS 84 Datum)

<u>Point</u>	<u>Latitude (N)</u>	<u>Longitude (E)</u>	<u>Safety Radius (m)</u>
ABBL1	1°19.425'	104°03.337'	250

Working Hours : 24 hours daily including Sundays and Public Holidays

Details : Bulk carriers will be anchoring at the break bulking slot ABBL1 at (CEDA). Sand will be discharged from the bulk carrier using onboard crane and grab systems onto transshipment barges. Transshipment barges will transport the sand to CEDA Stockpile Area within the working area for discharge.

The arrival and departure movements of bulk carriers will take place during daylight hours.

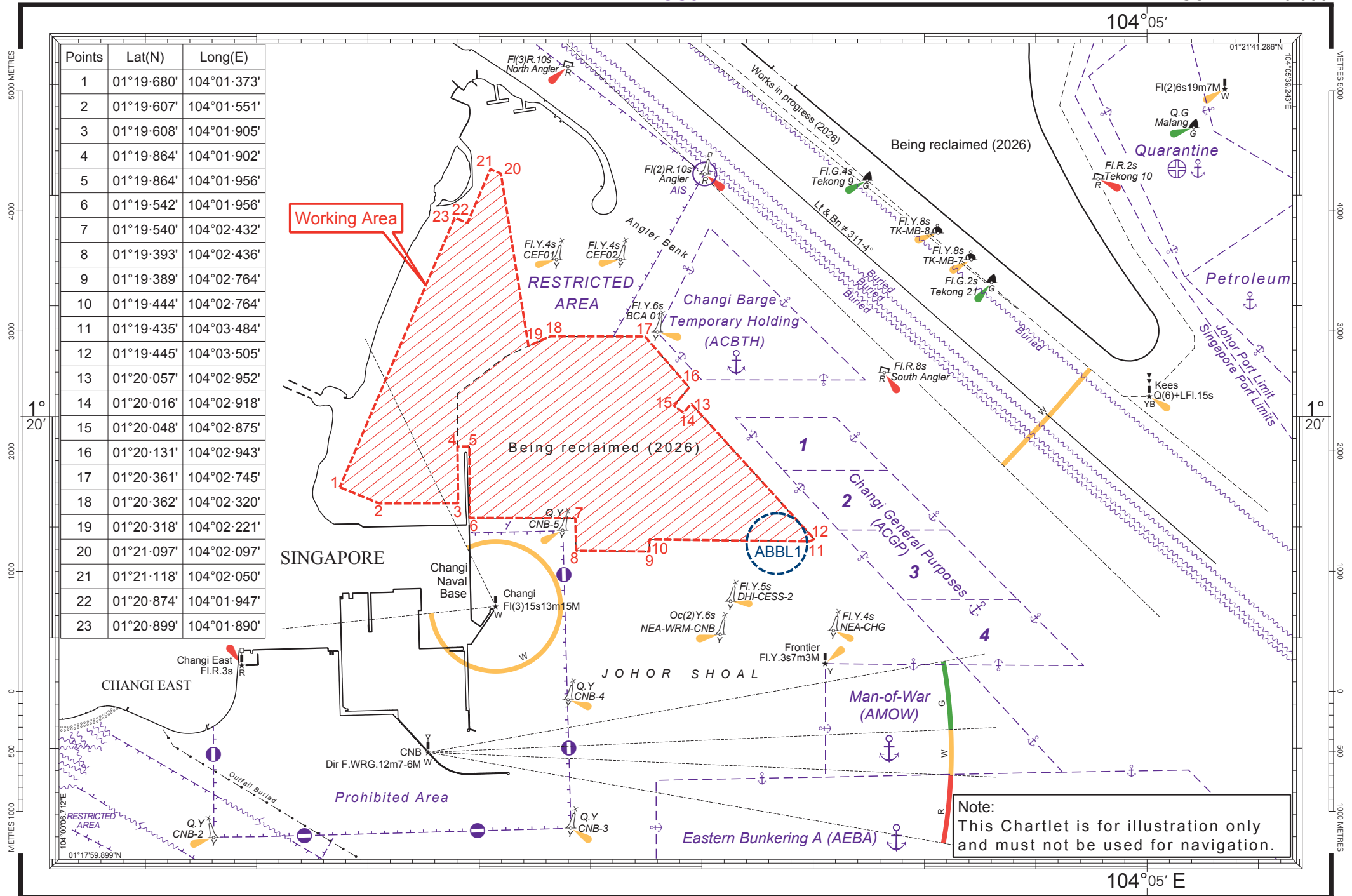
Further enquires relating to the project can be directed to Mr. Andrew Lee, Project Manager at Tel: (65) 9777 7896 (email: andrewlee@helm-marine.com).

Caution : **When in the vicinity of the working area, mariners are reminded to:**

- 1) **Keep well clear and not to enter the working area.**
- 2) **Maintain a proper lookout;**
- 3) **Proceed at a safe speed and navigate with caution;**
- 4) **Maintain a listening watch on VHF Channel 21 (Sembawang Control);**
- 5) **Communicate with Sembawang Control on VHF Channel 21 for assistance, if required.**

Please call Capt. Hazel Leo at Tel: +65 6325 2465 or Marine Safety Control Centre (MSCC) Duty Officer at +65 6325 2488/2489 for clarification on this Port Marine Notice.

CAPT CHONG JIA CHYUAN
PORT MASTER
MARITIME AND PORT AUTHORITY OF SINGAPORE



Points	Lat(N)	Long(E)
1	01°19'680"	104°01'373"
2	01°19'607"	104°01'551"
3	01°19'608"	104°01'905"
4	01°19'864"	104°01'902"
5	01°19'864"	104°01'956"
6	01°19'542"	104°01'956"
7	01°19'540"	104°02'432"
8	01°19'393"	104°02'436"
9	01°19'389"	104°02'764"
10	01°19'444"	104°02'764"
11	01°19'435"	104°03'484"
12	01°19'445"	104°03'505"
13	01°20'057"	104°02'952"
14	01°20'016"	104°02'918"
15	01°20'048"	104°02'875"
16	01°20'131"	104°02'943"
17	01°20'361"	104°02'745"
18	01°20'362"	104°02'320"
19	01°20'318"	104°02'221"
20	01°21'097"	104°02'097"
21	01°21'118"	104°02'050"
22	01°20'874"	104°01'947"
23	01°20'899"	104°01'890"