



MARITIME AND PORT AUTHORITY OF SINGAPORE

PORT MARINE NOTICE
NO. 69 OF 2026

13 May 2026

Shipping Community
Harbour Craft Community
Pleasure Craft Community

**COASTAL DEVELOPMENT PROJECT AND TEMPORARY HOLDING AREA AT
NORTHERN COAST OF WOODLANDS**

Applicable to: Mariners operating in the vicinity of the Northern Coast of Woodlands
(Eastern Side of the Causeway)

This PMN supersedes Port Marine Notice No. 46 of 2026. The working area has been amended, chartlet and the list of crafts have been revised.

Date : With effect from 13 May 2026 to 12 Nov 2026.

Location : At sea, within the working area bounded by the following co-ordinates (see attached chartlet):

	<u>Working Area Coordinates</u> (WGS 84 Datum)	
<u>Point</u>	<u>Latitude (N)</u>	<u>Longitude (E)</u>
1	01°27·015'	103°46·407'
2	01°27·003'	103°46·382'
3	01°26·978'	103°46·338'
4	01°26·938'	103°46·295'
5	01°26·929'	103°46·270'
6	01°26·918'	103°46·261'
7	01°26·917'	103°46·254'
8	01°26·910'	103°46·247'
9	01°26·912'	103°46·243'
10	01°27·149'	103°46·171'
11	01°27·279'	103°46·369'

12	01°27.100'	103°46.480'
13	01°27.042'	103°46.390'

Temporary Holding Area Coordinates
(WGS 84 Datum)

<u>Point</u>	<u>Latitude (N)</u>	<u>Longitude (E)</u>
1	01°27.564'	103°46.895'
2	01°27.651'	103°47.032'
3	01°27.513'	103°47.118'
4	01°27.426'	103°46.982'

Working Hours : 24 hours daily, including Sundays and public holidays.

Craft : Please refer to **ANNEX A** for the list of craft for deployment in the working area.

These craft will exhibit the appropriate local and international day and night signals.

Details : Construction of vertical perimeter wall using concrete blocks and infilling of sand for reclamation works.

A safety boat will be deployed to warn other craft in the vicinity of the working area.

Temporary holding area located east of the RTS link bridge, where the 3-in-1 Pelican Barge “QL Infinity” can anchor for standby and/or meet escort tugs before transiting under the RTS Link Bridge to Northern Coast of Woodlands (East of Causeway) reclamation project area. The anchoring location for “QL Infinity” is approximately at coordinates (WGS 84 Datum) 01°27.539N 103°47.007E.

Further general enquiries relating to the project can be directed to: Mr Robin Chong, Marine Controller at
Tel: 9697 7556 (email: robin@rsm.com.sg)

Caution : **When in the vicinity of the working area, mariners are reminded to:**

- a) **Keep well clear and not to enter the working area;**
- b) **Maintain a proper lookout;**
- c) **Proceed at a safe speed and navigate with caution;**
- d) **Maintain a listening watch on VHF Channel 21 (Sembawang Control); and**
- e) **Communicate with Sembawang Control for assistance, if required.**

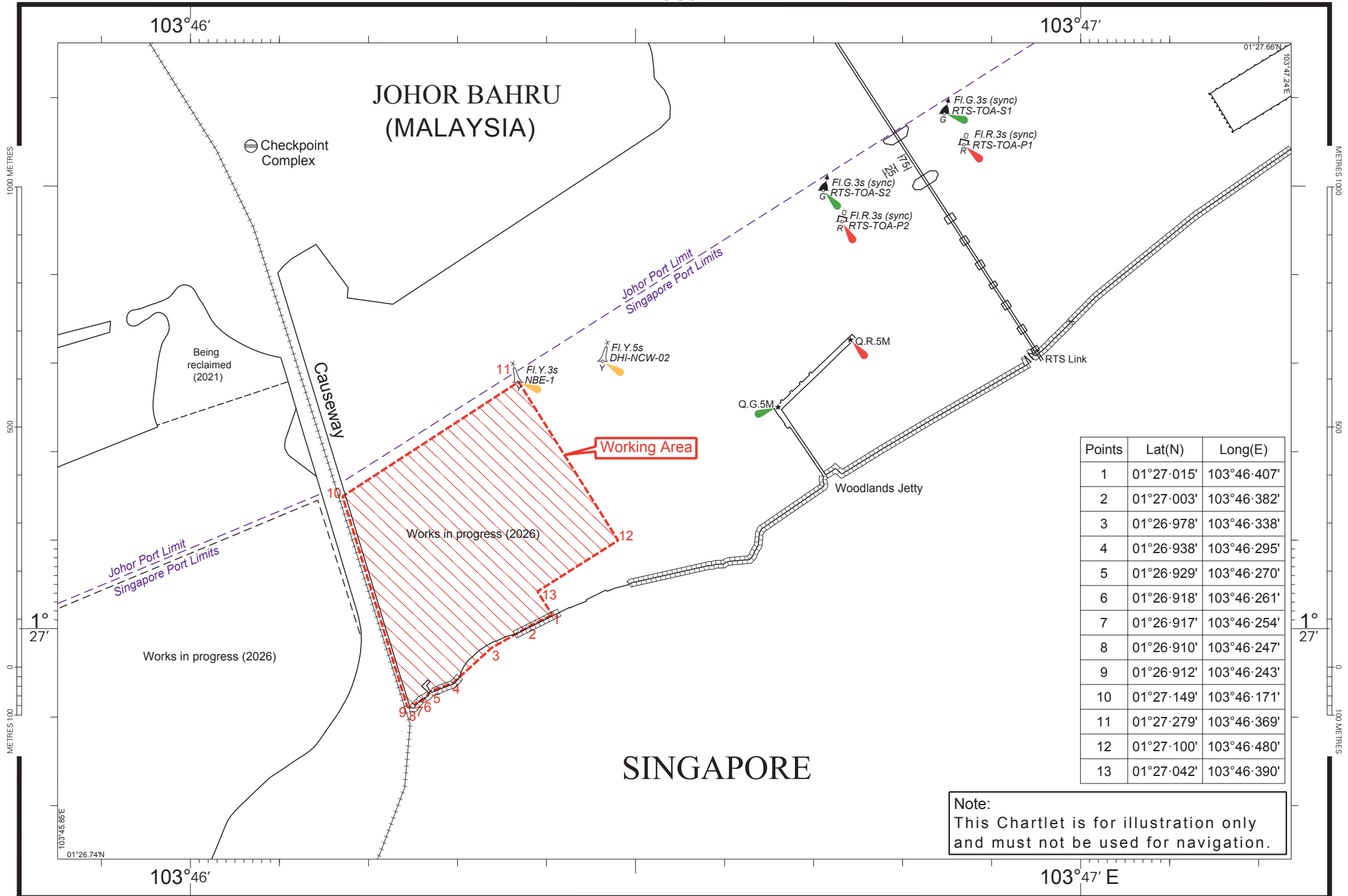
Please call Capt. Hazel Leo at Tel: +65 6325 2465 or Marine Safety Control Centre (MSCC) Duty Officer at +65 6325 2488/2489 for clarification on this Port Marine Notice.

CAPT CHONG JIA CHYUAN
PORT MASTER
MARITIME AND PORT AUTHORITY OF SINGAPORE

CRAFT APPROVED FOR DEPLOYMENT IN THE WORKING AREA

<u>Name</u>	<u>Harbour Craft License No.</u>	<u>Description</u>
AB15 05	ST 1669I	TUG BOAT
AB15 06	ST 1684B	TUG BOAT
ABADI 6	ST 1225A	PUSHER TUG BOAT
ABADI 8	ST 1219G	PUSHER TUG BOAT
ABADI 9	ST 1235I	PUSHER TUG BOAT
AOM 401	SR 3811C	WORK BARGE
AOM HOPPER 13	SR 3436C	SPLIT HOPPER BARGE
AOM HOPPER 14	SR 3461D	SPLIT HOPPER BARGE
AOM HOPPER 15	SR 3460F	SPLIT HOPPER BARGE
AOM HOPPER 20	SR 3514I	SPLIT HOPPER BARGE
AOM HOPPER 23	SR 3634Z	SPLIT HOPPER BARGE
AOM HOPPER 25	SR 3779F	SPLIT HOPPER BARGE
AOM HOPPER 1801	SR 3784B	SPLIT HOPPER BARGE
AOM HOPPER 1802	SR 3783D	SPLIT HOPPER BARGE
AOM T1301	ST 1395I	PUSHER TUG BOAT
AOM T1302	ST 1482C	PUSHER TUG BOAT
ASL 1515	SR 4154H	BARGE
B 218	SR 2860F	CRANE BARGE
BARLIAN 10	ST 1218I	TUGBOAT (SAFETY CRAFT)
BARLIAN T1201	ST 1319C	TUGBOAT
CB 013	SR 3296D	CRANE BARGE
E T HARBOUR 15	ST 0970F	TUGBOAT (SAFETY CRAFT)
E T HARBOUR 17	ST 1007J	TUGBOAT
E T HARBOUR 19	ST 1126C	TUGBOAT
E T OCEAN 9	ST 1113A	TUGBOAT
ET OCEAN 15	ST 1371A	TUGBOAT
ENG TOU 284	SR 3685D	CRANE BARGE
ENG TOU 290	SR 4192J	CRANE BARGE
HEISEI 8	SR 3366I	GRAB DREDGER
INTAN T1701	ST 1226Z	PUSHER TUG BOAT
INTAN T1703	ST 1232D	PUSHER TUG BOAT
KAIHO GO	SR 3522Z	GRAB DREDGER
KHB 1507	SC 4851A	FLAT TOP BARGE
KHB 1208	SC 5090G	BARGE
KHB 1209	SR 4274I	BARGE
MATA HARI	SR 0074D	ANCHOR BOAT
QL INFINITY	THCPMP	3 IN 1 PELICAN BARGE
QSA PT3	ST 1544G	TUGBOAT
SANTIAGO DOLPHIN	ST 1683D	TUGBOAT
SC 3989Z	SC 3989Z	SUPPLY VESSEL
SC 4396Z	SC 4396Z	SUPPLY VESSEL

SC 4455I	SC 4455I	PASSENGER BOAT
SL T1	SR 3321I	PELICAN BARGE
SL T14	SR 3274C	PELICAN BARGE
SOON LI 08	SR 3660I	GRAB DREDGER
SOON LI 18	SR 3661G	GRAB DREDGER
SOON LI 28	THCPMP	3 IN 1 PELICAN BARGE
SR 3216F	SR 3216F	SURVEY BOAT
SR 3666H	SR 3666H	SURVEY BOAT
SSE ALEXANDRIA	SR 2845B	UTILITY VESSEL
SSE ANASTASIA	SR 9199B	TUGBOAT
STL PS1	SR 4215C	PELICAN BARGE
STL V	SR 3119D	PELICAN BARGE
TOA 401	SR 4201C	WORK BARGE
WATER TAXI V	SC 4334Z	PASSENGER BOAT
WHALE 7	ST 1592G	PUSHER TUG BOAT
YJP SURVEYORS 3	SR 3814H	SURVEY BOAT
YJP SURVEYORS 4	SR 3821J	SURVEY BOAT
YJP SURVEYORS 5	SR 3970E	WORKBOAT
YJP SURVEYORS 6	SR 4035E	WORKBOAT
YJP SURVEYORS 7	SR 3809A	SURVEY BOAT
YJP SURVEYORS 9	SR 3785J	SURVEY BOAT
YJP SURVEYORS 11	SR 4233A	WORK BOAT
YOBYO NO 203	SR 2450C	WORK BOAT
YORK 315	SC 5168G	PASSENGER BOAT



Points	Lat(N)	Long(E)
1	01°27'015'	103°46'407'
2	01°27'003'	103°46'382'
3	01°26'978'	103°46'338'
4	01°26'938'	103°46'295'
5	01°26'929'	103°46'270'
6	01°26'918'	103°46'261'
7	01°26'917'	103°46'254'
8	01°26'910'	103°46'247'
9	01°26'912'	103°46'243'
10	01°27'149'	103°46'171'
11	01°27'279'	103°46'369'
12	01°27'100'	103°46'480'
13	01°27'042'	103°46'390'

Note:
This Chartlet is for illustration only
and must not be used for navigation.

