

MARITIME AND PORT AUTHORITY OF SINGAPORE

PORT MARINE CIRCULAR NO. 3 OF 2003

3 Jan 03

Shipping Community
Harbour Craft Community

RECOMMENDED ROUTES AND SPEED LIMITS FOR REGIONAL FERRIES

1 In the interest of navigational safety, all regional ferries are currently following recommended routes when entering, leaving or navigating within the port. Ferries are also required to comply with the speed limits in certain parts of our port waters.

2 To enhance safety and port security, the existing recommended routes and speed limits for regional ferries have been revised as follows:

Recommended Routes

- (a) Ferries inbound for or outbound from Tanah Merah Ferry Terminal (TMFT) are to use the new route as specified in para 1 and 2 of **Appendix 1** and shown in **Chartlet A**. The new route is about 3 to 4 nautical miles west of the old route. To assist ferry masters approaching TMFT from the south, a pillar buoy FI (4) Y 10s named "Ferry buoy" has been installed in position Lat 01° 16.63'N Long 103° 58.71 E to mark the entrance of the approach channel.
- (b) Ferries from the west (eg Tg Batu, Tg Balai, Kukup) inbound for or outbound from Regional Ferry Terminal (RFT) in World Trade Centre are to use the new route via Sisters Channel for inbound traffic and via Jong Fairway for outbound traffic as specified in para 3 and 4 of **Appendix 1** as shown in **Chartlet B**.

3 There is no change to the recommended routes for ferries from the south (eg Sekupang, Batu Ampar) inbound or outbound to/from RFT in World Trade Centre as specified in para 5 and 6 of **Appendix 1** as shown in **Chartlet B**.

Speed Limits

4 Pursuant to Section 43 (c) of the Maritime and Port Authority of Singapore Act (Cap. 170A) (the “Act”) and Regulation 33 of the Maritime and Port Authority of Singapore (Port) Regulations (the “Regulations”), the Port Master hereby implements the speed limits for regional ferries at the following parts of the recommended routes as follows:

- (a) Ferries inbound and outbound for/from Tanah Merah Ferry Terminal (TMFT)

(See Chartlet A)

Approaches to TMFT [between Point (A) and TMFT] - **6 knots**

- (b) Ferries inbound for Regional Ferry Terminal (RFT) from the South (eg Sekupang, Batu Ampar) and the West (eg Tg Balai, Tg Batu , Kukup, Karimun)

(See Chartlet B)

- (1) Point (6) at the port limit including Sisters Fairway and the waters off Pulau Sentosa to Point (1) off Keppel Head - **16 knots** during the day and **12 knots** during the hours of darkness (1900 hours to 0700 hours).

- (2) Inside Cruise Bay - **6 knots**

- (c) Ferries outbound from Regional Ferry Terminal (RFT) to the South (eg Sekupang, Batu Ampar)

(See Chartlet B)

- (1) Inside Cruise Bay - **6 knots**

- (2) Point (1) off Keppel Head to Point (5) at the port limit including the waters of Pulau Sentosa, Buran Channel and East Keppel Fairway - **16 knots** during the day and **12 knots** during the hours of darkness (1900 hours to 0700 hours).

- (d) Ferries outbound from Regional Ferry Terminal (RFT) to the West eg Tg Balai, Tg Batu , Kukup, Karimun)

(See Chartlet B)

- (1) Inside Cruise Bay - **6 knots**

- (2) Point (1) off Keppel Head to Point (8) in the West Keppel Fairway - **12 knots**

- (3) Point (8) in West Keppel Fairway to Point (9) at the port limit including Jong Fairway -**16 knots** during the day and **12 knots** during the hours of darkness (1900 hours to 0700 hours).

5 Failure to comply with this notice shall constitute offences under Section 50 of the Act and/or Regulation 78 of the Regulations.

6 The above recommended ferry routes and speed limits will take effect from 06 Jan 2003. Ferry masters are reminded to comply with the Merchant Shipping (Prevention of Collisions at Sea) Regulations 1972, as amended and the speed limits as stipulated above. They are also reminded to exercise caution when entering and leaving port.

7 Port Marine Circular No. 89 of 1997, No. 42 of 1998 and No 8 of 2000 are hereby cancelled.

CHAN KENG NEE
for PORT MASTER
MARITIME AND PORT AUTHORITY OF SINGAPORE
Tel : 6325 2455
Fax : 6325 2454

EASTERN SECTOR (See attached Chartlet A)**1 RECOMMENDED ROUTE FOR FERRIES INBOUND FOR TANAH MERAH FERRY TERMINAL (TMFT) FROM THE SOUTH**

The recommended route is:

from a position in	(B)	Lat.	1° 16.34'N	Long.	103° 58.84'E
to a position in	(A)	Lat.	1° 18.30'N	Long.	103° 58.84'E

2 RECOMMENDED ROUTE FOR FERRIES OUTBOUND FROM TMFT TO THE SOUTH

The recommended route is:

from a position in	(A)	Lat.	1° 18.30'N	Long.	103° 58.84'E
to a position in	(B)	Lat.	1° 16.34'N	Long.	103° 58.84'E

NB: The numbers in brackets provide positional references in the chartlets.

CENTRAL & WESTERN SECTORS (See attached Chartlet B)**3 RECOMMENDED ROUTE FOR FERRIES INBOUND FOR REGIONAL FERRY TERMINAL (RFT) FROM THE WEST (TG BATU, TG BALAI, KUKUP)**

The recommended route is:

from a position in	(7)	Lat.	1° 11.58'N	Long.	103° 49.50'E
to a position in	(6)	Lat.	1° 12.40'N	Long.	103° 51.10'E
to a position in	(2)	Lat.	1° 14.05'N	Long.	103° 49.73'E
to a position in	(1)	Lat.	1° 15.59'N	Long.	103° 48.22'E

4 RECOMMENDED ROUTE FOR FERRIES OUTBOUND FROM RFT BOUND TO THE WEST (TG BATU, TG BALAI, KUKUP, KARIMUN)

The recommended route is:

from a position in	(1)	Lat.	1° 15.59'N	Long.	103° 48.22'E
to a position in	(8)	Lat.	1° 14.75'N	Long.	103° 46.30'E
to a position in	(9)	Lat.	1° 11.50'N	Long.	103° 49.01'E

5 RECOMMENDED ROUTE FOR FERRIES INBOUND FOR RFT FROM THE SOUTH

The recommended route is:

from a position in	(6)	Lat.	1° 12.40'N	Long.	103° 51.10'E
to a position in	(2)	Lat.	1° 14.05'N	Long.	103° 49.73'E
to a position in	(1)	Lat.	1° 15.59'N	Long.	103° 48.22'E

6 RECOMMENDED ROUTE FOR FERRIES OUTBOUND FROM RFT TO THE SOUTH

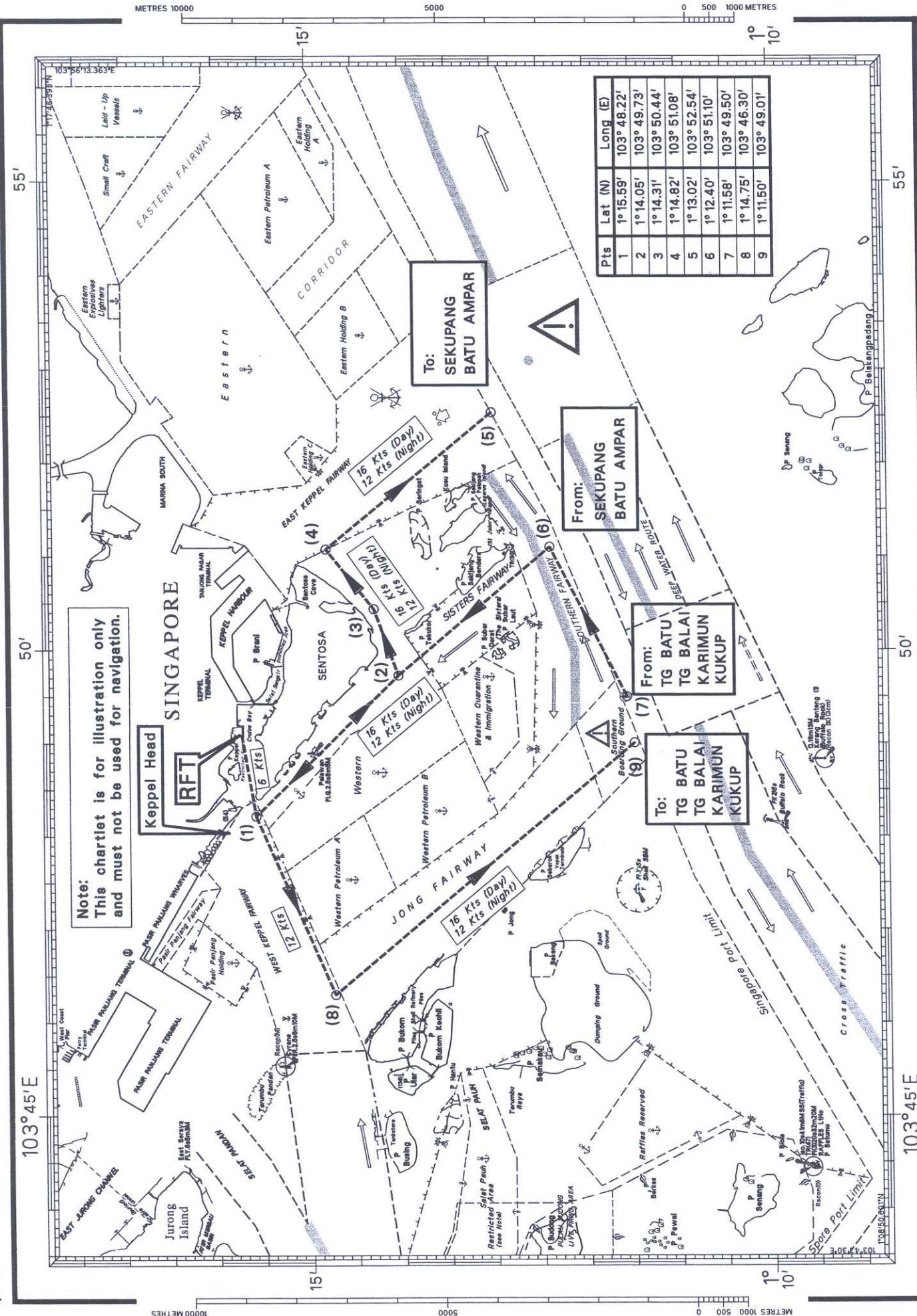
The recommended route is:

from a position in	(1)	Lat.	1° 15.59'N	Long.	103° 48.22'E
to a position in	(2)	Lat.	1° 14.05'N	Long.	103° 49.73'E
to a position in	(3)	Lat.	1° 14.31'N	Long.	103° 50.44'E
to a position in	(4)	Lat.	1° 14.82'N	Long.	103° 51.08'E
to a position in	(5)	Lat.	1° 13.02'N	Long.	103° 52.54'E

NB: The numbers in brackets provide positional references in the chartlets.

RECOMMENDED FERRY ROUTES AND SPEED LIMITS TO/FROM REGIONAL FERRY TERMINAL (CENTRAL & WESTERN SECTORS)

CHARTLET B



HY Code AJ0306202

POSITIONS IN WGS 84

Prepared by LeKK/WeeSHS/MADAtar Hydrographic Dept. MPA 26 Dec 02 CA 213/02 Scale 1:100000