



MARITIME AND PORT AUTHORITY OF SINGAPORE

PORT MARINE CIRCULAR
NO.10 OF 2009

13 Aug 2009

To: Shipping Community
Harbour Craft Community
Pleasure Craft Community

WATER SKIING IN SINGAPORE PORT WATERS

1 Water-skiing activities which include wake-boarding are growing in popularity as a sea sport. With effect from 13 Aug 2009, MPA has designated 9 water-skiing areas including one new site located south of Sentosa (see Appendices 1 to 7). To ensure safety of the water-skiers, any person operating a pleasure craft involved in water-skiing activities shall comply with the following:

- (a) Water-skiing shall only be carried out during daylight hours (0700 hrs to 1900 hrs) and within the designated water-skiing sites;
- (b) Proceed in a counter-clockwise direction as shown in Appendices;
- (c) Ensure that in addition to the pleasure craft driver, there is another person in the pleasure craft of at least 15 years of age, who is in a position to observe the progress of the person being towed;
- (d) Ensure that all skiers put on life-vests at all times;
- (e) Maintain a good look out at all times and shall keep well clear of other water-skiers and swimmers; and
- (f) Comply with the International Collision Regulations when overtaking and taking action to avoid collision.

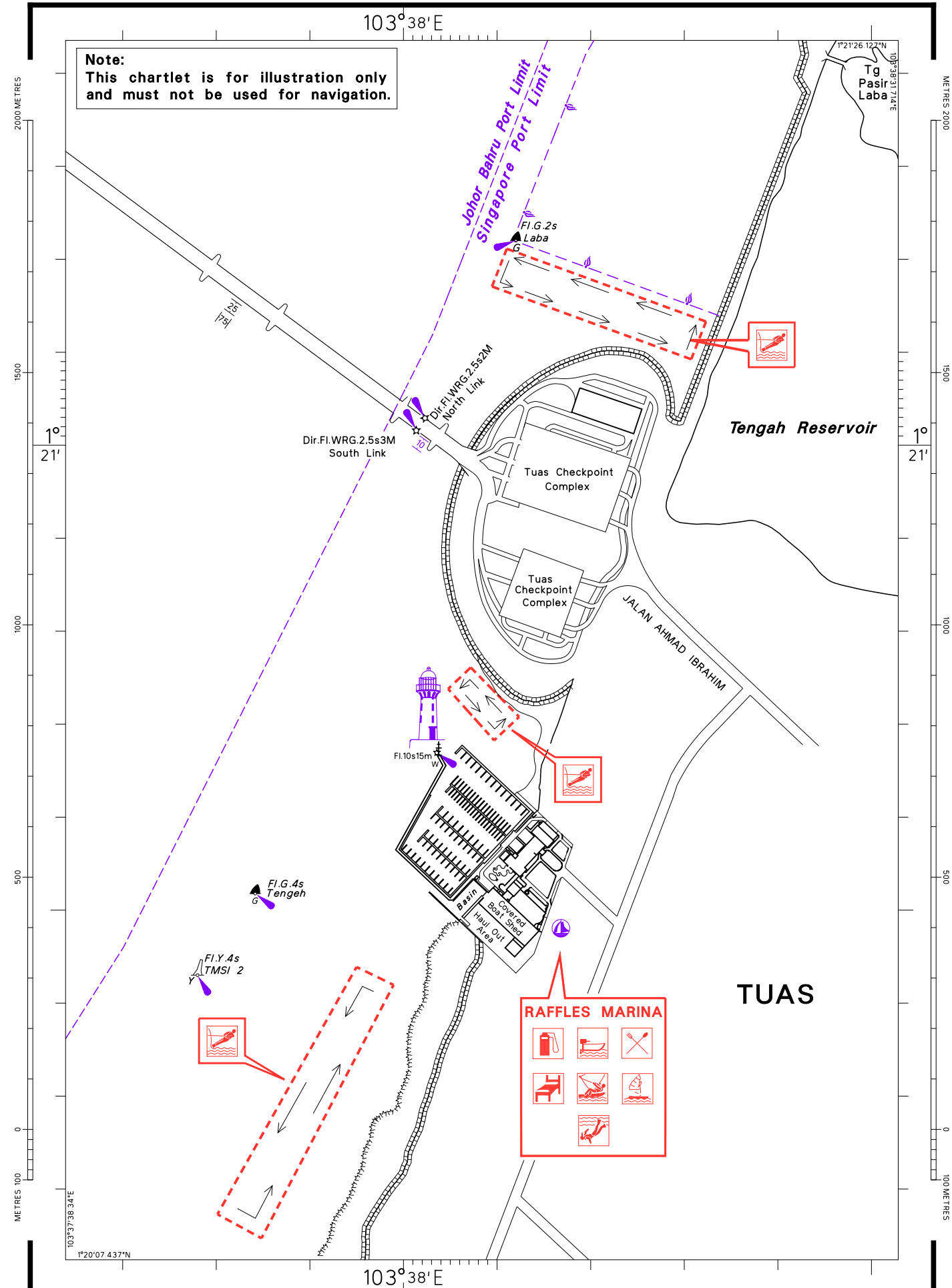
2 In pursuant to regulation 53 of the MPA (Pleasure Craft) Regulations 1997, the Port Master hereby directs that any person operating a pleasure craft when involved in water-skiing activities shall comply the requirements stated in para 1 of this circular. Any person who fails to comply with this direction shall be guilty of an offence and shall be liable on conviction to a fine not exceeding \$5,000.

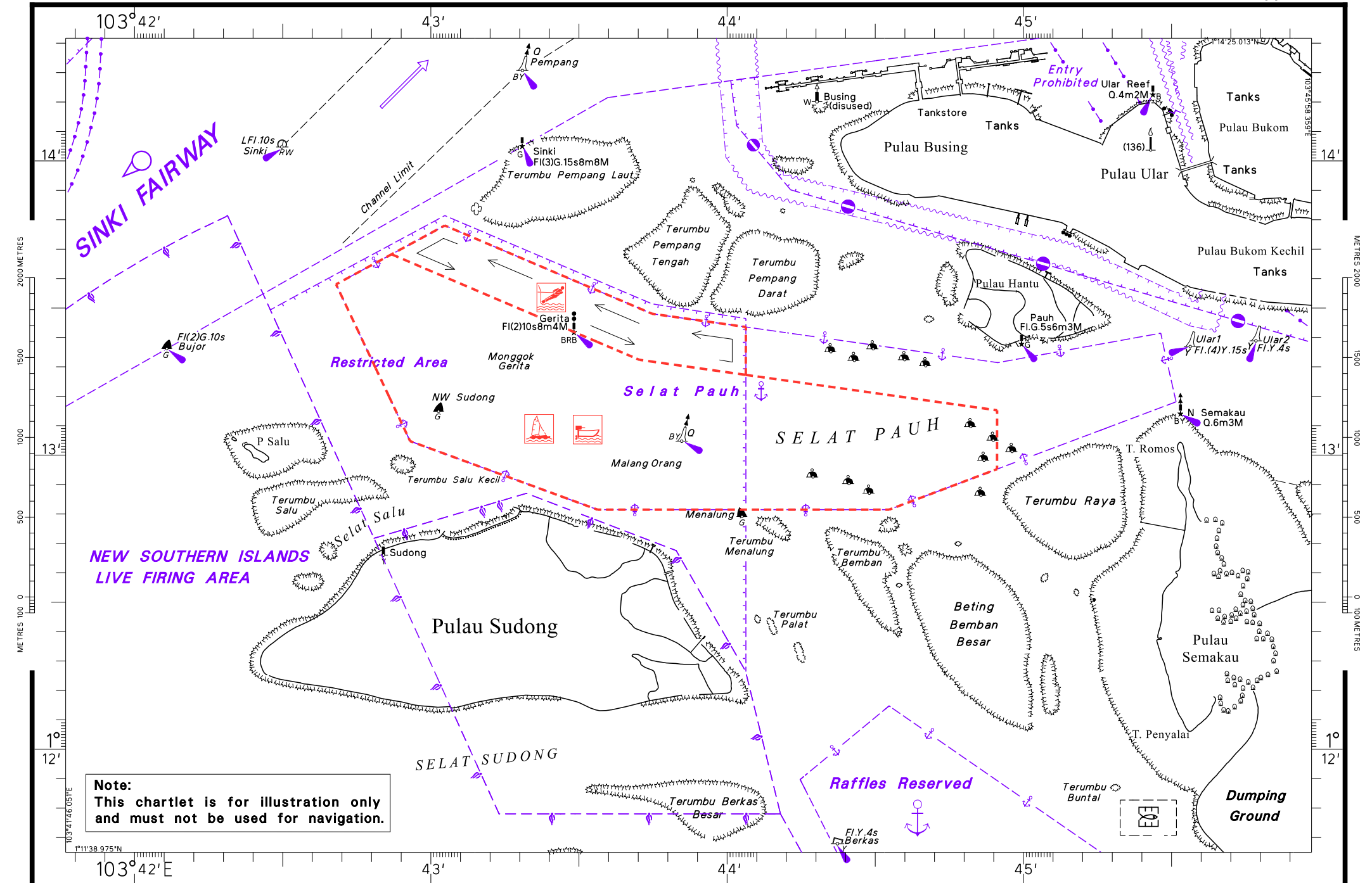
3 All vessels other than pleasure craft involved in water-skiing activities shall keep well clear of the designated water skiing sites.

4 Port Marine Circular No. 16 of 2006 will be cancelled with effect from 13 Aug 2009.

LOW MUN SING
for PORT MASTER
MARITIME AND PORT AUTHORITY OF SINGAPORE

TEL: 6325 2419
FAX: 6325 2430





DESIGNATED WATER SKIING SITE

WGS 84

Appendix 3

