



MARITIME AND PORT AUTHORITY OF SINGAPORE

PORT MARINE CIRCULAR
No. 8 of 2012

3 May 2012

Shipping Community /Harbour Craft Community

SPECIAL BUNKERING ANCHORAGE (SBA) SCHEME - COMPULSORY PILOTAGE

1 Currently ships other than Liquefied Petroleum Gas (LPG) vessels, Liquefied Natural Gas (LNG) vessels, Chemical Tankers, Oil Rigs and Drill Ships, are exempted from compulsory pilotage when proceeding in and out of the special bunkering anchorages located in the eastern and western sector of the Port of Singapore.

2 Several near miss incidents and contacts had occurred in these anchorages, despite the advice to shipmasters to engage the services of pilot, if they are not familiar with the port waters. The findings from these incidents indicated that the common contributory factors were shipmasters' lack of knowledge of local environmental conditions, misjudgement of tidal strength and inadequate ship-handling proficiency in port waters. To enhance safety, MPA considered the imposition of compulsory pilotage for vessels proceeding in and out of special bunkering anchorages. MPA has consulted and received the support of the shipping industry including ICS, OCIMF, SSA and INTERTANKO on this.

3 To enhance the navigational safety of the port waters, all vessels arriving or departing from the special bunkering anchorages will be required to engage the services of a licensed pilot with effect from 1 June 2012 at 0001 hours local time (LT).

4 The limits of the anchorages under the SBA scheme i.e. Anchorage Eastern Bunkering "A" (AEBA), Anchorage Eastern Bunkering "B" (AEBB), Anchorage Eastern Bunkering "C" (AEBC), Anchorage Sudong Bunkering "A" (ASUBA) and Anchorage Sudong Bunkering "B" (ASUBB) remain unchanged. However, with the implementation of compulsory pilotage, the existing 18 sectors in the eastern bunkering anchorages will no longer be reflected on the nautical chart with effect from 1 June 2012. (See Appendix A and B).

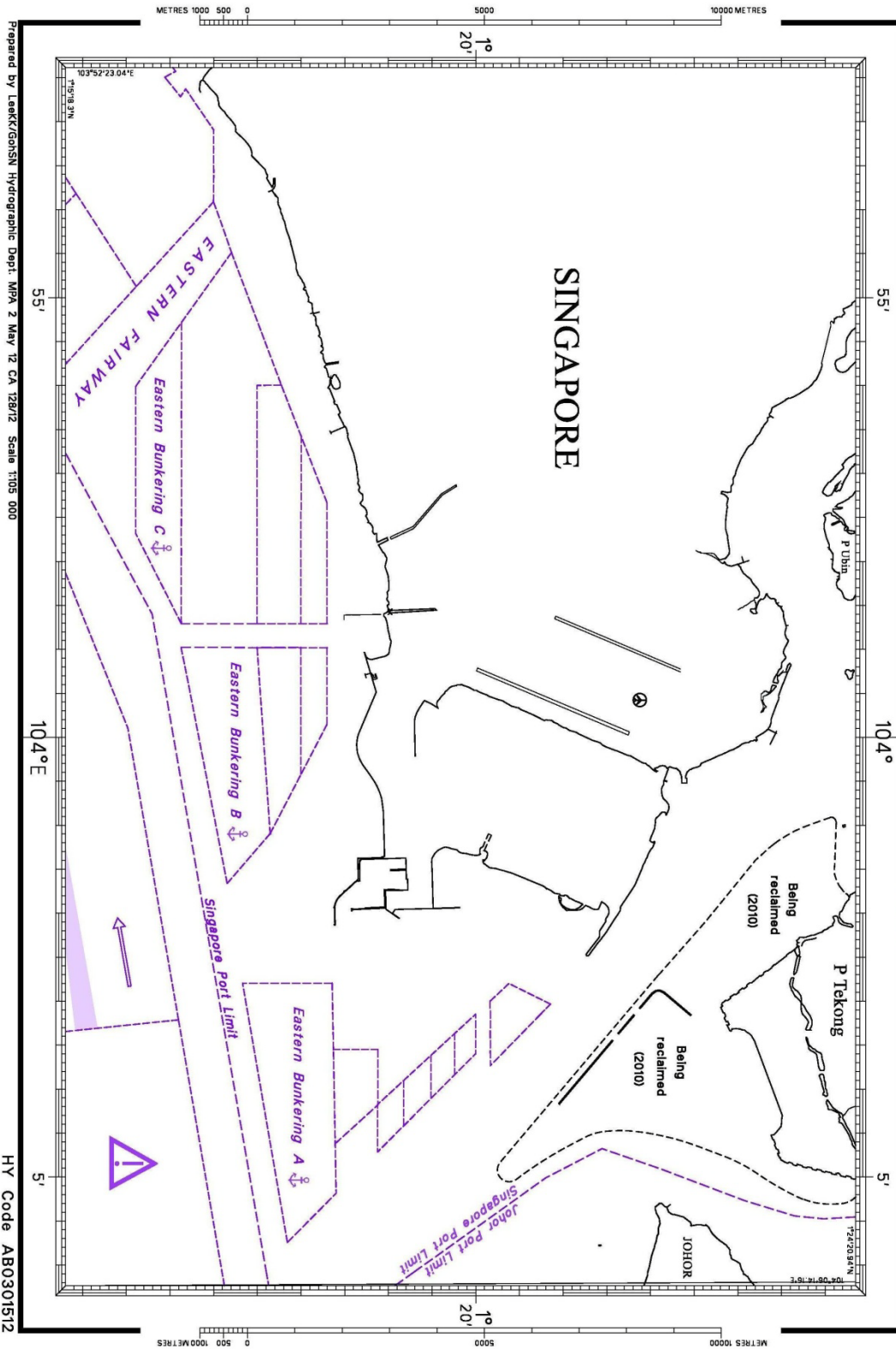
5 Please contact Capt Charles De Souza at Tel: 6325-2420 should you have any queries.

LEE CHENG WEE
PORT MASTER
MARITIME AND PORT AUTHORITY OF SINGAPORE

EASTERN BUNKERING ANCHORAGES A,B AND C

WGS84

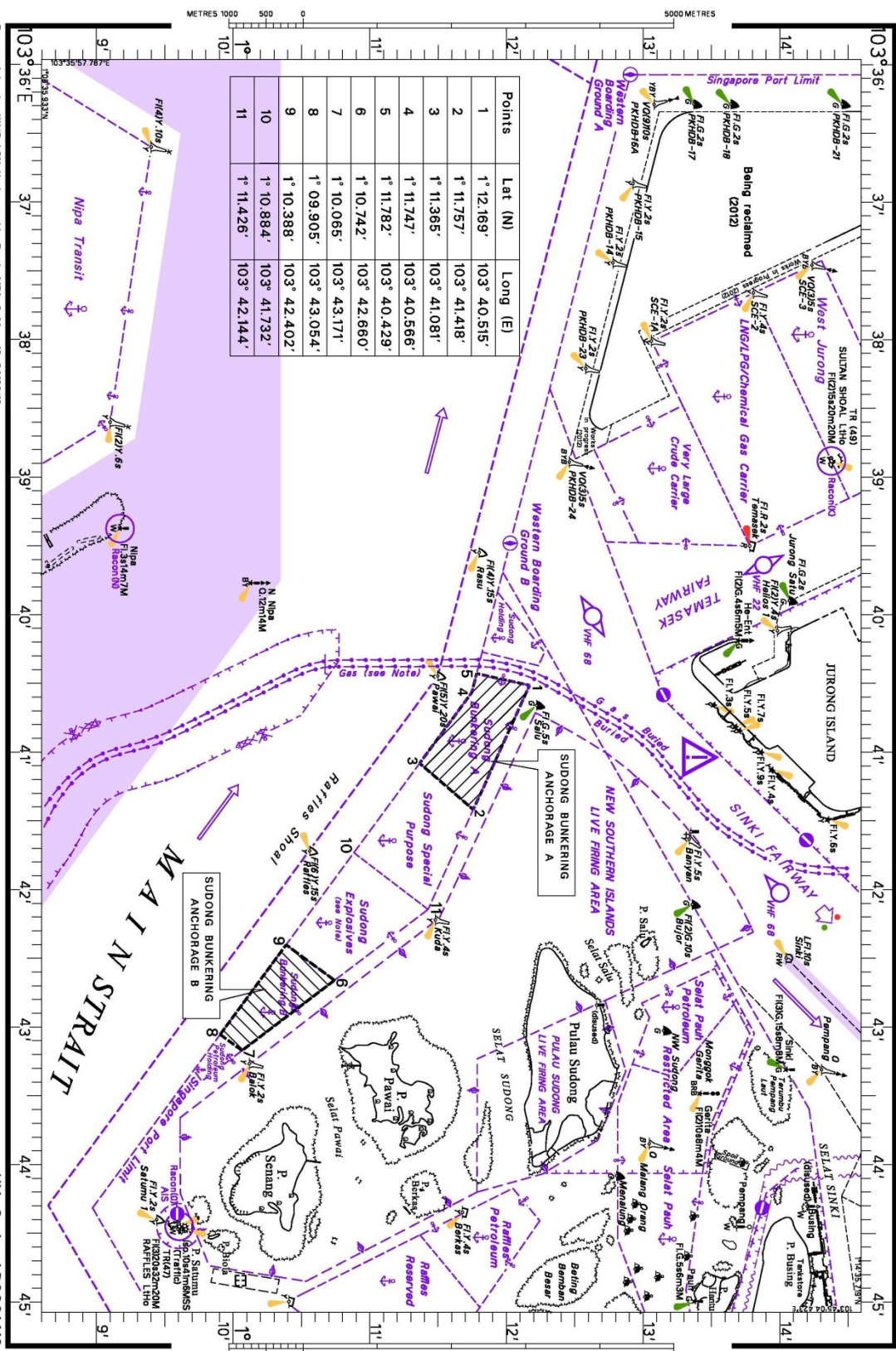
APPENDIX A



BUNKERING ANCHORAGES - WESTERN SECTOR

WGS84

Appendix B



Prepared by Laek/Ka/Ga/SN Hydrographic Dept. MPA 2 May 12 CAZB/12

HY Code ABO301412