



MARITIME AND PORT AUTHORITY OF SINGAPORE

PORT MARINE NOTICE NO. 061 OF 2022

16 Sep 2022

Shipping Community
Harbour Craft Community
Pleasure Craft Community

KUSU PILGRIMAGE SEASON 2022

Applicable to: Mariners operating to and from Marina South Pier (MSP), in the vicinity of East Keppel Fairway and Kusu Island (Pulau Tembakul)

1. The 2022 Kusu Pilgrimage season will commence on 26 Sep 2022 and end on 24 Oct 2022. During this period, ferries carrying passengers operated by Singapore Island Cruise & Ferry Services Pte Ltd will cross East Keppel Fairway when plying between the Marina South Pier (MSP) and Kusu Island. The recommended routes for these craft are shown in **Appendix 1**. Mariners shall keep a proper lookout for these craft and navigate with extra caution when in the vicinity of the recommended routes.
2. The traffic movement within MSP has been divided in two routes. All ferries and harbour craft shall use the recommended routes as indicated by the chartlet in **Appendix 2**. The waters within the breakwater MSP are “no wake zone”, harbour craft and ferries operating within the waters of MSP are reminded to slow down as far as practicable to reduce causing wakes.
3. Master of ferries and harbour craft shall proceed at a safe speed and navigate with caution when approaching MSP and Kusu Island.

4. The following buoys were laid to aid in the safe navigation of ferries approaching and leaving Kusu Jetty.

5.

<u>WGS 84 Datum</u>				
<u>Name</u>	<u>Latitude (N)</u>	<u>Longitude (E)</u>	<u>Purpose</u>	<u>Type of Buoy</u>
Kusu Buoy	01° 13.234'	103° 51.692'	Port hand buoy	Red Can buoy FI (2) R10s
Kusu Marker A	01° 13.521'	103° 51.428'	Channel buoy	Yellow polyethylene buoy
Kusu Marker B	01° 13.403'	103° 51.435'	For mooring of ferries (Off Pulau Sakijang)	Yellow polyethylene buoy

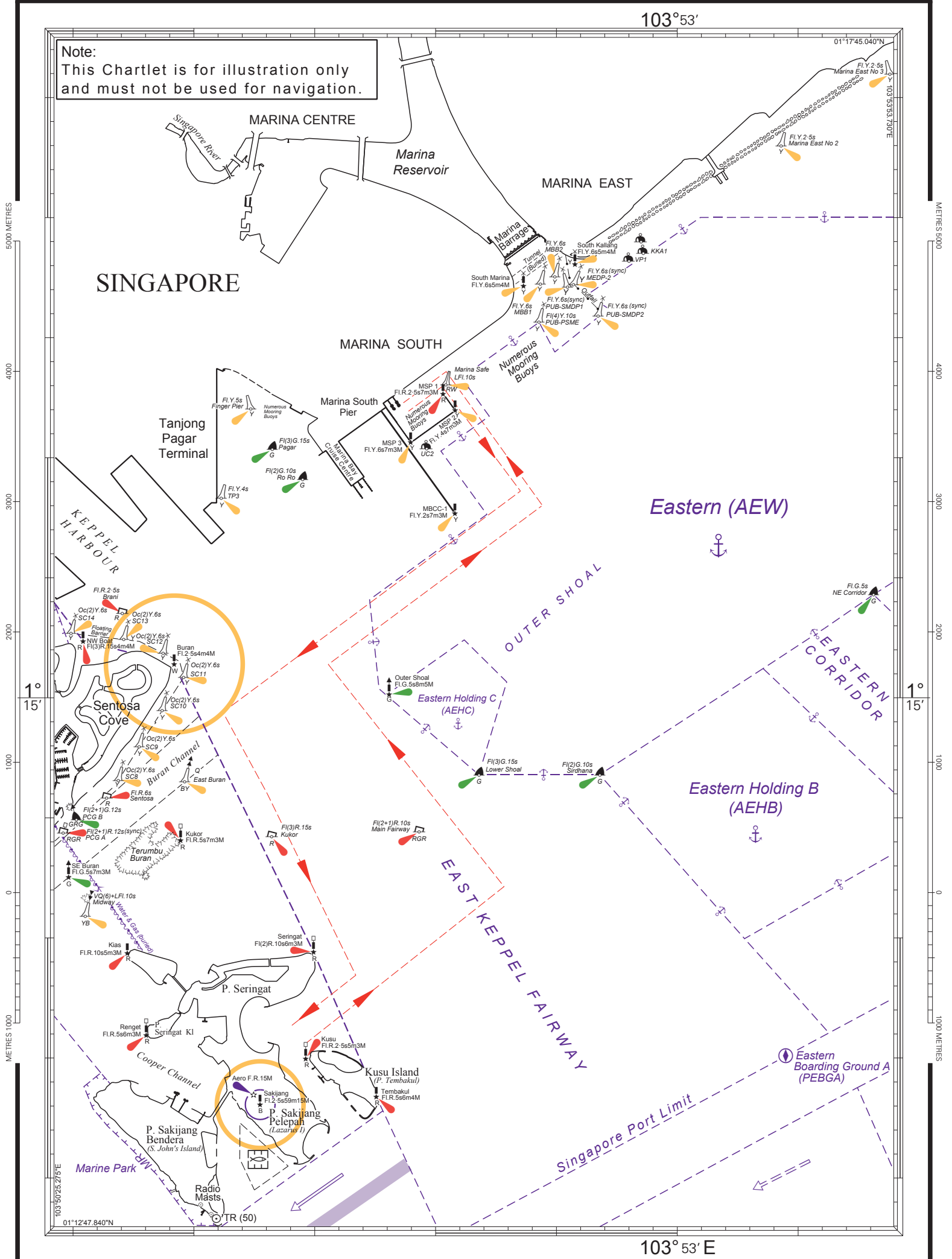
5. Ferries shall keep within the channel demarcated by the Kusu Buoy (FI (2) R10s) and the yellow polyethylene channel buoys shown in **Appendix 3**.

6. All harbour craft, except ferries operated by Singapore Island Cruise and Ferries Pte Ltd, plying to and from Kusu Island shall:

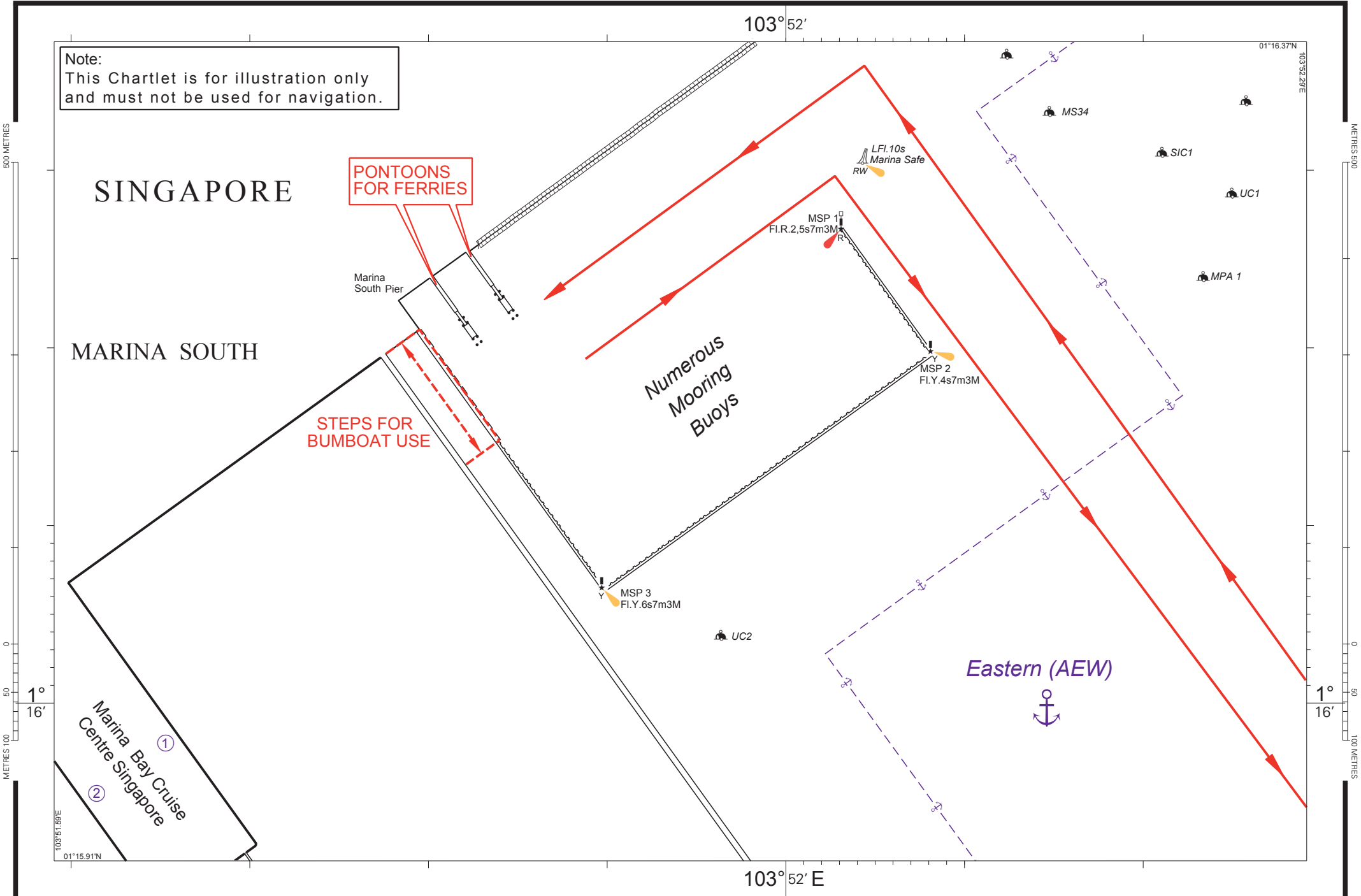
- a. Keep within the channel demarcated by the Kusu Beacon (FI R 2.5s) and the yellow polyethylene channel buoy in position Lat 01° 13'.526N Long 103° 51'.427E when approaching and leaving Kusu Jetty.
- b. Only use the jetty designated for use by harbour craft for the purpose of embarking and disembarking passengers (refer to **Appendix 3**). This jetty is situated about 65 metres northwest of the Main Passenger jetty.
- c. Not wait at the entrance of the channel or at the jetty.

7. Please call Mr Tan Kim Poh at Tel: 6325-2462 or Marine Safety Control Centre 6325-2488/2489 for clarification on this Port Marine Notice.

CHONG JIA CHYUAN
PORT MASTER
MARITIME AND PORT AUTHORITY OF SINGAPORE



Note:
This Chartlet is for illustration only
and must not be used for navigation.



500 METRES

METRES 500

0

0

60

60

METRES 100

100 METRES

103° 52'

1° 14'

14'

1000 METRES

500

0

50

100 METRES

1° 13'

13'

103° 51.17'E

01°12.74'N

Note:
This Chartlet is for illustration only
and must not be used for navigation.

1° 14'

14'

1000 METRES

500

0

50

100 METRES

1° 13'

13'

103° 52.08'E

103° 52' E

Pulau Seringat
(P. Renget Besar)

Seringat
Fl(2)R.10s6m3M

Kusu
Marker A
Fl.R.2.5s5m3M

Kusu Jetty
(For Harbour Craft
use only)

Kusu Island
(P. Tembakul)
(Peak Island)

1 Yellow Drum
Buoy for
mooring of
ferries

Kusu
Marker B

Tembakul
Fl.R.5s6m4M

Pulau Sakijang Pelepah
(Lazarus Island)

Sakijang
Fl.2.5s59m15M
AIS

FL(2)R.10s
Kusu Buoy

SOUTHERN
FAIRWAY

EAST
KEPPEL
FAIRWAY

