



SINGAPOREAN NOTICES TO MARINERS

SECTION	CONTENT	Page
I	Index of Charts & Publications	1
II	New Publications	9
	Notices to Mariners and Chart Corrections	18
	Temporary and Preliminary Notices	20
III	Navigational Information	21
	Amendments to Publications	22
IV	Reprint of Radio Navigational Warnings	27
V	Extract of Admiralty Notices to Mariners for Dual-Badged Charts	29

The monthly Notices to Mariners contain corrective information affecting charts published by the Hydrographic Department, Maritime and Port Authority of Singapore. The information contained in these Notices should be updated on the charts affected. Notices under Section II apply only to the particular Singaporean Chart(s) indicated.

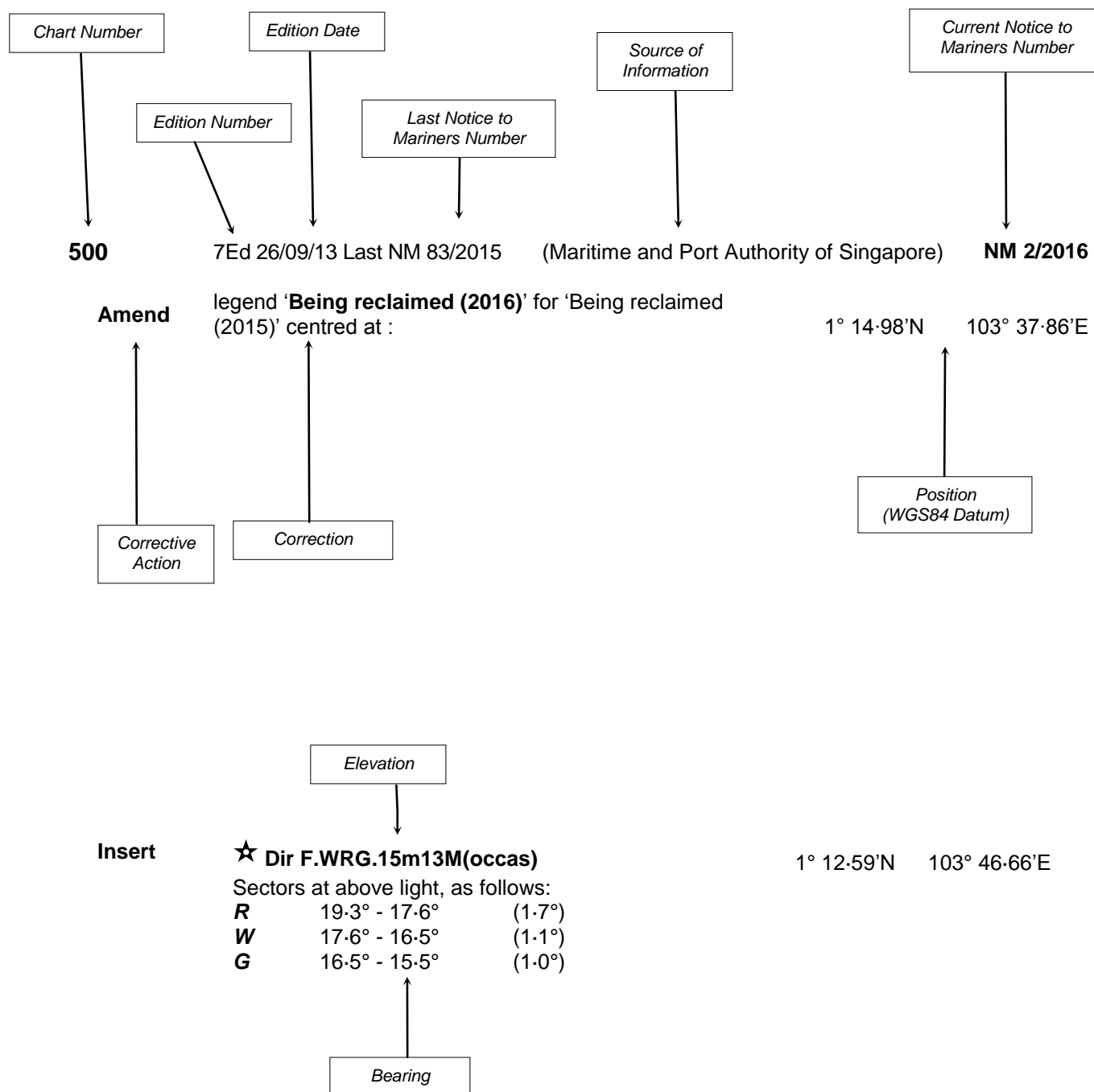
Mariners are requested to notify the Chief Hydrographer, Maritime and Port Authority of Singapore, immediately on the discovery of new dangers or suspected dangers to navigation and of changes or defects in aids to navigation. See Hydrographic Note on back page.

The monthly Singaporean Notices to Mariners can be accessed directly from the MPA website:
[http://www.mpa.gov.sg/sites/port_and_shipping/circulars_and_notices/singapore_notices_to_mariners\(ntm\).page](http://www.mpa.gov.sg/sites/port_and_shipping/circulars_and_notices/singapore_notices_to_mariners(ntm).page)

Hydrographic Department
Maritime and Port Authority of Singapore
7B Keppel Road
#20-00 Tanjong Pagar Complex
Singapore 089055
Tel: (65) 6325 2027
Fax: (65) 6226 1076
Email: hydrographic@mpa.gov.sg

EXPLANATION OF FORMAT

The elements of a typical chart correction are explained below.



Notes:

- Notice to Mariners number followed by:
T indicates a Temporary Notice (eg. **NM 3T/2016**).
P indicates a Preliminary Notice (eg. **NM 4P/2016**).
- Bearings are true reckoned clockwise from 000° to 359° ; those relating to lights are from seaward.
- Heights and elevations are above Mean High Water Springs.

I
INDEX OF CHARTS AND PUBLICATIONS

INDEX OF AFFECTED CHARTS

DESCRIPTION	NOTICE NO.	PAGE NO.
Index of Singaporean Charts	-	3, 4
Index of Dual-Badged Charts	-	5 to 7
Index of Singapore Electronic Navigational Chart (ENC)	-	8
New Edition Charts for Small Craft 2016	-	9
New Edition Dual Badged Chart	-	9,10
New Edition Singapore ENC	-	10,11
New Edition Singaporean Chart	-	12
Singapore Port Information Year 2016/2017	-	13,14
Singapore Tide Tables Year 2016	-	15 to 17
Singaporean Chart 202	7,8	18
Singaporean Chart 500	7	18
Singaporean Chart 501	*9,10	18
Singaporean Chart 502	*9,10	19
Temporary and Preliminary Notices	*11P	20
Singapore Port Marine Notices/Circulars	*12	21
Singaporean Print-On-Demand (POD) Charts	*13	21
Amendments to Publications	*14,*15	22 to 26
Reprint of Radio Navigational Warnings	-	27,28
Extract of Admiralty Notices to Mariners for Dual-Badged Charts	-	29,30
Singapore Electronic Navigational Chart (ENC) Distributors	-	31
Chart Distributors for the Maritime and Port Authority of Singapore Nautical Charts and Publications	-	32

*Source: Maritime and Port Authority of Singapore

I
INDEX OF CHARTS AND PUBLICATIONS

INDEX OF NOTICES

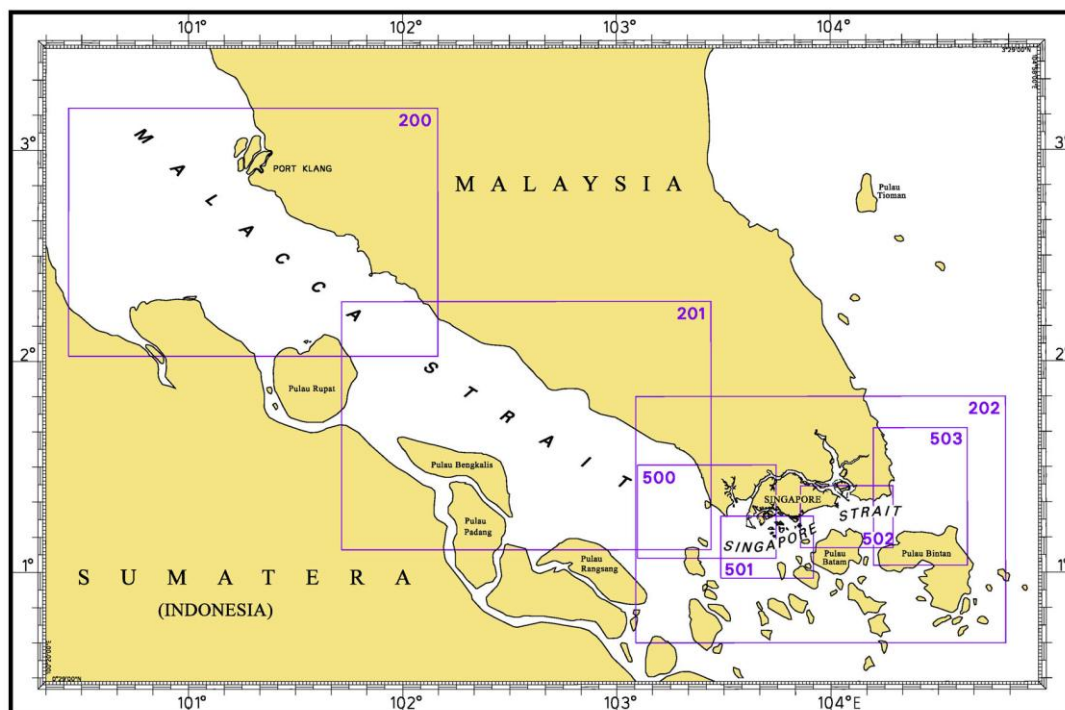
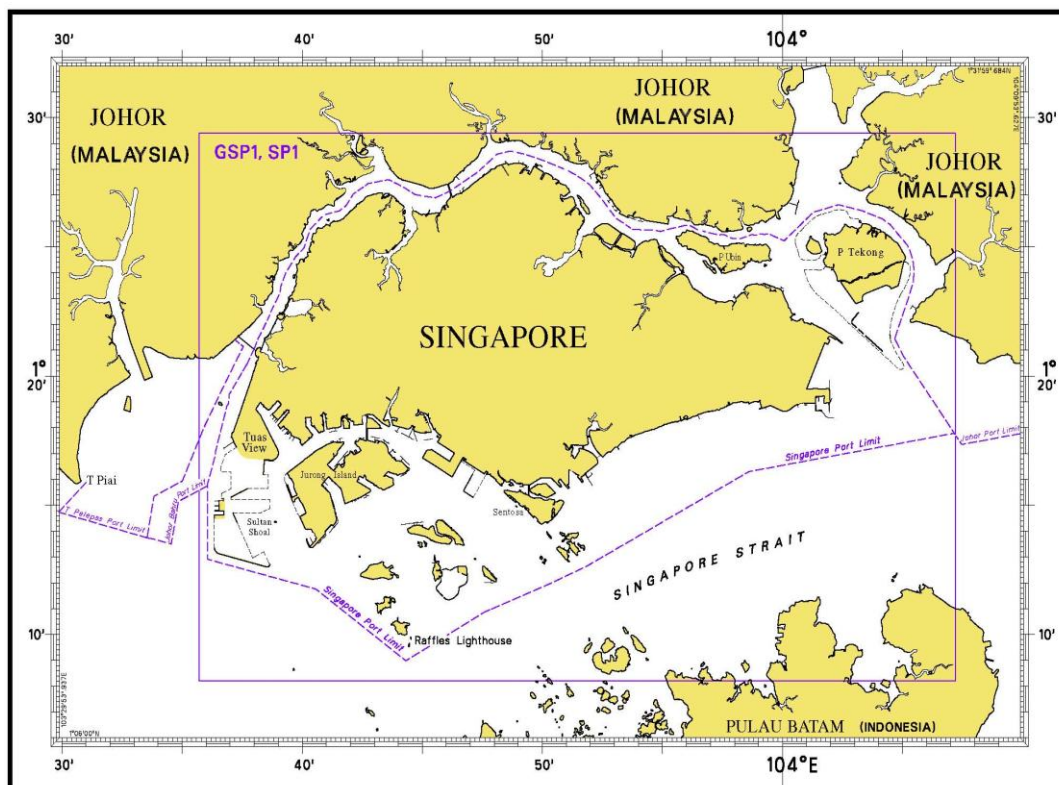
NOTICE NO.	DESCRIPTION	PAGE NO.
-	Index of Singaporean Charts	3, 4
-	Index of Dual-Badged Charts	5 to 7
-	Index of Singapore Electronic Navigational Chart (ENC)	8
-	New Edition Charts for Small Craft 2016	9
-	New Edition Dual Badged Chart	9,10
-	New Edition Singapore ENC	10,11
-	New Edition Singaporean Chart	12
-	Singapore Port Information Year 2016/2017	13,14
-	Singapore Tide Tables 2016	15 to 17
7,8	Singaporean Chart 202	18
7	Singaporean Chart 500	18
*9,10	Singaporean Chart 501	18
*9,10	Singaporean Chart 502	19
*11P	Temporary and Preliminary Notices	20
*12	Singapore Port Marine Notices/Circulars	21
*13	Singaporean Print-On-Demand (POD) Charts	21
*14,*15	Amendments to Publications	22 to 26
-	Reprint of Radio Navigational Warnings	27,28
-	Extract of Admiralty Notices to Mariners for Dual-Badged Charts	29,30
-	Singapore Electronic Navigational Chart (ENC) Distributors	31
-	Chart Distributors for the Maritime and Port Authority of Singapore Nautical Charts	32

* Source: Maritime and Port Authority of Singapore

I

INDEX OF CHARTS AND PUBLICATIONS

INDEX OF SINGAPOREAN CHARTS



Notes:

Updated Singaporean Charts are available through our Print-On-Demand (POD) Chart Service. For more information, refer to Section III – Navigational Information. These charts can be purchased from our Chart Distributors.

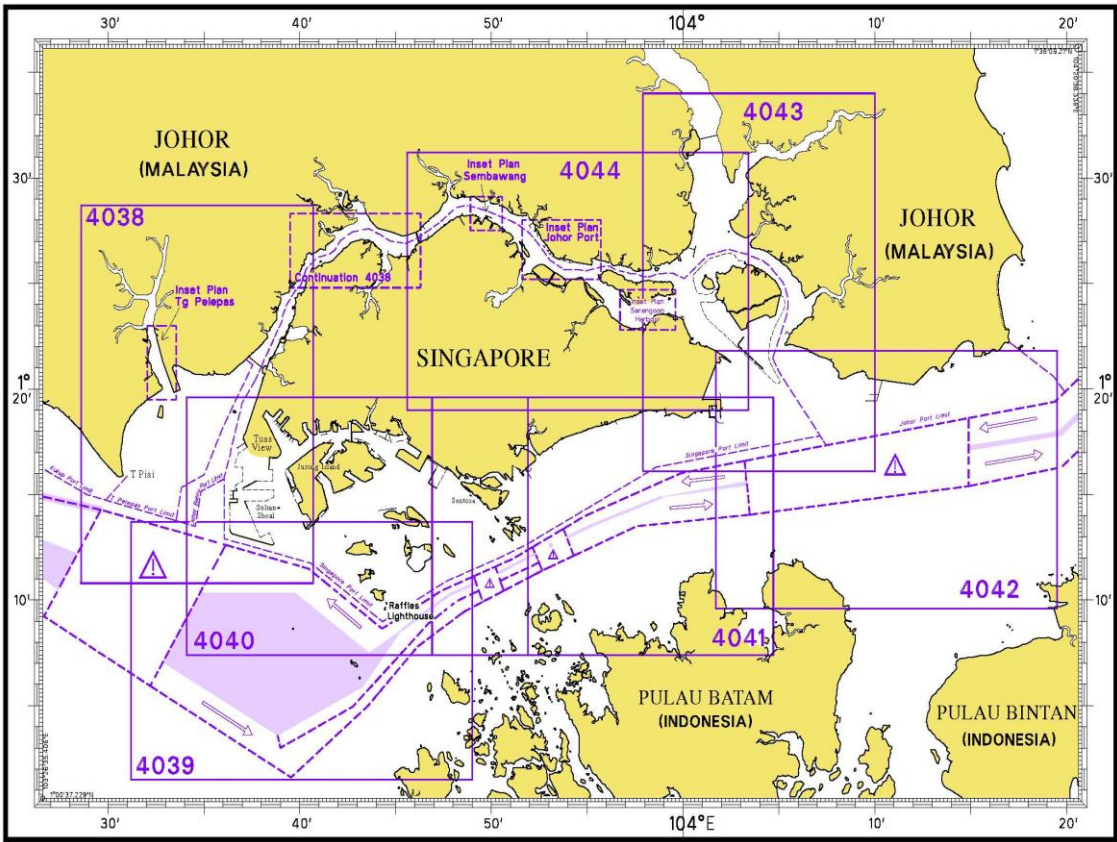
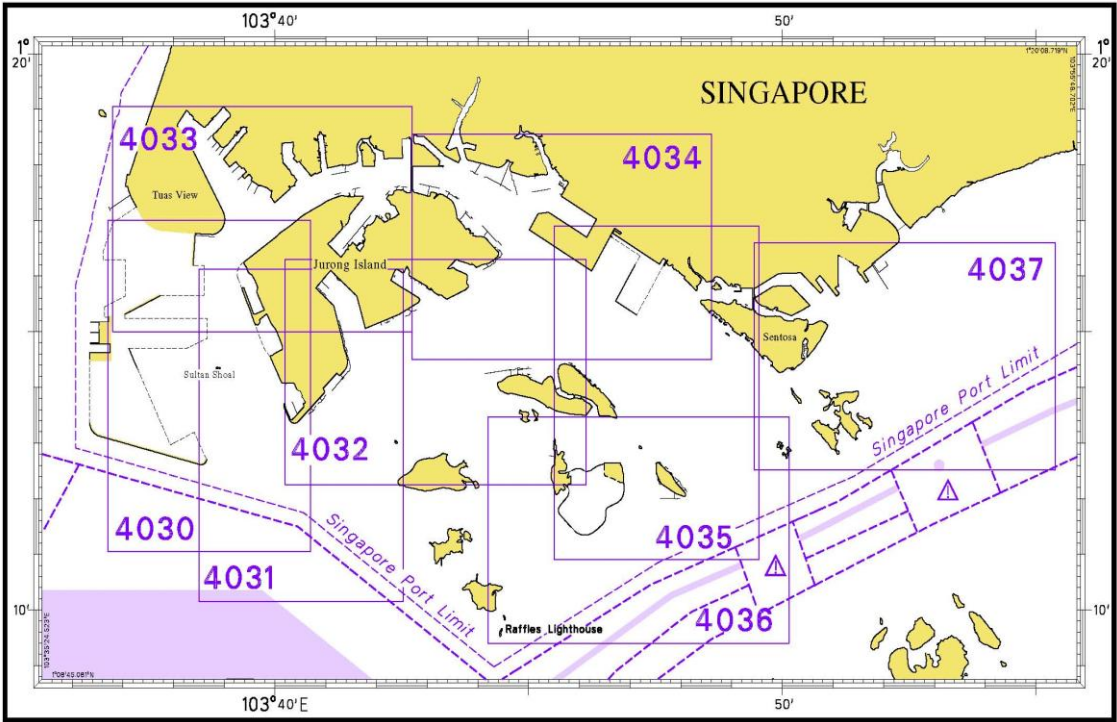
I
INDEX OF CHARTS AND PUBLICATIONS

SINGAPOREAN CHARTS

Chart No.	Chart Title	Scale 1:	Date Published of Latest Edition
GSP1	Anchorage and Aids to Navigation (with Area Reference)	60 000	02/03/2015
SP1	Anchorage and Aids to Navigation	60 000	02/03/2015
200	Malacca Strait - Port Klang to Tanjung Keling	200 000	01/09/2015
201	Malacca Strait - Tanjung Keling to Western Entrance of Singapore Strait	200 000	15/08/2014
202	Singapore Strait	200 000	26/09/2013
500	Malacca and Singapore Straits – Pulau Pisang to Raffles Lighthouse	75 000	26/09/2013
501	Singapore Strait – Western Part	50 000	01/09/2015
502	Singapore Strait - Eastern Part	50 000	01/09/2015
503	South China Sea - Eastern Approaches and Entrance to Singapore Strait	75 000	15/08/2014
-	Charts for Small Craft – Singapore Port Waters and Approaches	10 000 to 200 000	January 2016
1	Symbols Abbreviations Terms and S-57 Objects used on Singapore Nautical and Electronic Navigational Charts. Available at MPA website: http://www.mpa.gov.sg	-	28/07/2011

I
INDEX OF CHARTS AND PUBLICATIONS

DUAL-BADGED CHARTS



INDEX OF CHARTS AND PUBLICATIONS**DUAL- BADGED CHARTS**

Chart No.	Chart Title	Scale 1:	Date Published of Latest Edition
4030	Port of Singapore West Jurong Anchorages and Temasek Fairway	10 000	07/05/2015
4031	Port of Singapore Western Approaches to Jurong Island	10 000	07/05/2015
4032	Port of Singapore Sinki Fairway	10 000	15/05/2014
4033	Port of Singapore Tuas Bay, West Jurong Channel and Pesek Basin	10 000	07/05/2015
4034	Port of Singapore East Jurong Channel, Pasir Panjang Terminal and West Keppel Fairway	10 000	28/05/2015
4035	Port of Singapore Western Anchorages, Jong Fairway and Cruise Bay	10 000	28/05/2015
4036	Port of Singapore Raffles Lighthouse to The Sisters	10 000	28/05/2015
4037	Port of Singapore Keppel Harbour, Tanjong Pagar Terminal and Approaches	10 000	28/05/2015
4038	Malaysia and Singapore Johor Strait – Western Part	30 000	26/09/2013
4039	Indonesia, Singapore and Malaysia Western Approaches to Main Strait	30 000	24/04/2014
4040	Singapore, Indonesia and Malaysia Tuas View to Pulau Sakijang Bendera (S. John's Island)	30 000	27/08/2015
4041	Singapore and Indonesia Pulau Sebarok to Changi	30 000	27/08/2015

I
INDEX OF CHARTS AND PUBLICATIONS

DUAL- BADGED CHARTS

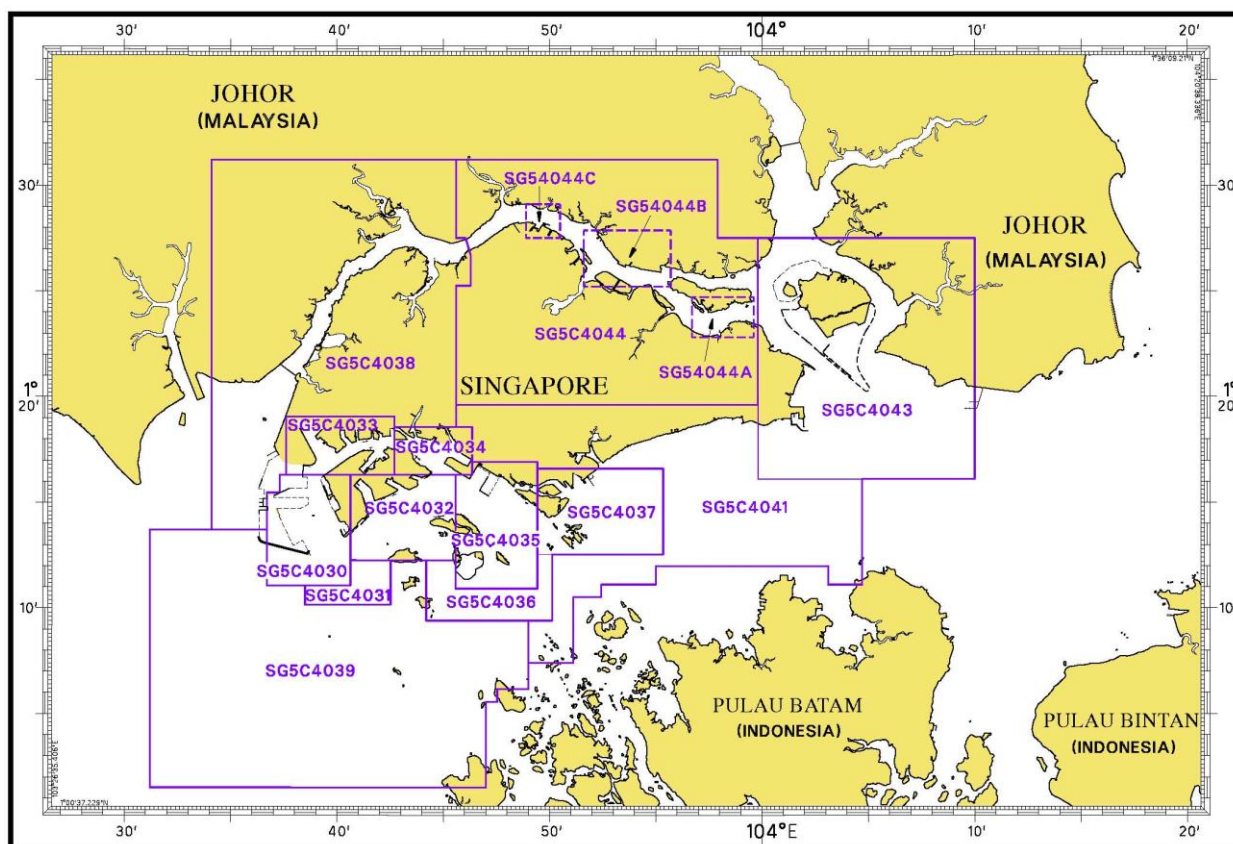
Chart No.	Chart Title	Scale 1:	Date Published of Latest Edition
4042	Indonesia, Malaysia and Singapore Changi to Pulau Mungging and Tanjung Buntan to Tanjung Tondang	30 000	24/04/2014
4043	Malaysia and Singapore Kuala Johor and Sungai Johor	30 000	09/04/2015
4044	Singapore and Malaysia Johor Strait - Eastern Part	30 000	09/04/2015

SINGAPOREAN PUBLICATIONS

Item	Title	Date Published of Latest Edition
1	Singapore Tide Tables Year 2016	09/09/2015
2	Singapore Port Information 2016/2017	04/01/2016

I INDEX OF CHARTS AND PUBLICATIONS

INDEX OF SINGAPORE ELECTRONIC NAVIGATIONAL CHART (ENC)



SINGAPORE ELECTRONIC NAVIGATIONAL CHART (ENC)

ENC Name	ENC Coverage	ENC Edition
SG5C4030	West Jurong Anchorages and Temasek Fairway	8 th Edition (7/05/2015)
SG5C4031	Western Approaches to Jurong Island	7 th Edition (1/09/2014)
SG5C4032	Sinki Fairway	10 th Edition (7/05/2015)
SG5C4033	Tuas Bay, West Jurong Channel and Pesek Basin	8 th Edition (7/05/2015)
SG5C4034	East Jurong Channel, Pasir Panjang Terminal and West Keppel Fairway	13 th Edition (28/05/2015)
SG5C4035	Western Anchorages, Jong Fairway and Cruise Bay	16 th Edition (28/05/2015)
SG5C4036	Raffles Lighthouse to The Sisters	9 th Edition (28/05/2015)
SG5C4037	Keppel Harbour, Tanjong Pagar Terminal and Approaches	9 th Edition (28/05/2015)
SG5C4038	Johor Strait – Western Part	8 th Edition (27/08/2015)
SG5C4039	Western Approaches to Main Strait	8 th Edition (27/08/2015)
SG5C4041	Pulau Sebarok to Changi	9 th Edition (27/08/2015)
SG5C4043	Kuala Johor	11 th Edition (9/04/2015)
SG5C4044	Johor Strait – Eastern Part	11 th Edition (9/04/2015)
SG54044A	Serangoon Harbour	2 nd Edition (9/04/2015)
SG54044B	Pelabuhan Johor (Johor Port)	2 nd Edition (9/04/2015)
SG54044C	Sembawang	2 nd Edition (9/04/2015)

The latest edition of the Singapore ENC covering Singapore Waters and their approaches can be found in our monthly Singaporean Notices to Mariners at MPA website: <http://www.mpa.gov.sg>

II NEW PUBLICATIONS

NEW EDITION CHART PUBLISHED ON 4TH JANUARY 2016

Chart Number	:	CHARTS FOR SMALL CRAFT
Title	:	Singapore Port Waters and Approaches – 2016 Edition
Date Published	:	4 th January 2016
Size of chart	:	600 x 400 mm
Remarks	:	The publication contains 12 Small Craft Charts and related nautical information bound into an atlas. The symbols, abbreviations and term depicted on these charts are consistent with the International Hydrographic Organization Chart Standards and Specifications. (Refer MPA website http://www.mpa.gov.sg) Symbols for the locations of pleasure craft facilities and areas for sea sport activities such as board sailing, dinghy sailing, keelboat sailing, power-boating and water-skiing are also included and highlighted in red.



Chart of the same publication Edition 2015 published on 2nd January 2015 is superseded.

NEW EDITION DUAL BADGED CHART TO BE PUBLISHED ON 25TH FEBRUARY 2016

Chart Number	:	4038
Title	:	Malaysia and Singapore Johor Strait, Western Part
Coverage	:	Lat 01° 10-80' N 01° 28-70' N Long 103° 28-60' E 103° 40-70' E
Scale	:	1: 30 000
Date Published	:	25 th February 2016
Size of Chart	:	750.6 x 1100.2 mm
Remarks	:	This new edition includes updates covering Temasek Fairway, West Jurong Channel, Sudong Anchorage, west of Tuas View Extension, West Johor Strait and Tanjung Pelepas.

The existing chart of the same number published on 26th September 2013 will be superseded.

NEW EDITION DUAL BADGED CHART TO BE PUBLISHED ON 17TH MARCH 2016

Chart Number	:	4030
Title	:	Port of Singapore West Jurong Anchorages and Temasek Fairway
Coverage	:	Lat 01° 11-05' N 01° 17-00' N Long 103° 36-70' E 103° 40-70' E
Scale	:	1 : 10 000
Date Published	:	17 th March 2016
Size of Chart	:	742.0 x 1096.5 mm
Remarks	:	This new edition includes updates covering Temasek Fairway, West Jurong Channel, Jurong Anchorages, west of Jurong Island and Sudong Anchorages.

The existing chart of the same number published on 07th May 2015 will be superseded.

II NEW PUBLICATIONS

Chart Number	:	4031
Title	:	Port of Singapore Western Approaches to Jurong Island
Coverage	:	Lat 01° 10·15' N 01° 16·12' N Long 103° 38·50' E 103° 42·53' E
Scale	:	1 : 10 000
Date Published	:	17 th March 2016
Size of Chart	:	747·5 x 1100·2 mm
Remarks	:	This new edition includes updates covering Temasek Fairway, west of Jurong Island, Banyan Basin and Sudong Anchorages. The existing chart of the same number published on 07 th May 2015 will be superseded.

Chart Number	:	4033
Title	:	Port of Singapore Tuas Bay, West Jurong Channel and Pesek Basin
Coverage	:	Lat 01° 15·00' N 01° 19·05' N Long 103° 36·80' E 103° 42·70' E
Scale	:	1 : 10 000
Date Published	:	17 th March 2016
Size of Chart	:	1094·4mm x 746·4mm
Remarks	:	This new edition includes updates covering Temasek Fairway, West Jurong Channel, Tuas Approach Channel, Northern Tuas Basin and Pesek Basin. The existing chart of the same number published on 07 th May 2015 will be superseded.

NEW EDITION SINGAPORE ENC TO BE RELEASED ON 25TH FEBRUARY 2016

ENC Name	:	SG5C4038
Location	:	Johor Strait – Western Part
Coverage	:	Lat 01° 13·70' N 01° 31·20' N Long 103° 34·10' E 103° 46·34' E
Compilation Scale	:	1: 22 000
Date Released	:	25 th February 2016
Descriptions	:	This new edition includes updates covering Temasek Fairway, West Jurong Channel, Sudong Anchorage, west of Tuas View Extension, West Johor Strait and Tanjung Pelepas. The existing cell of the same name released on 27 th August 2015 will be superseded.

II NEW PUBLICATIONS

NEW EDITION SINGAPORE ENC TO BE RELEASED ON 17TH MARCH 2016

ENC Name : SG5C4030
Location : West Jurong Anchorages and Temasek Fairway
Coverage : Lat 01° 11'050' N 01° 16'300' N
 Long 103° 36'700' E 103° 40'640' E
Compilation Scale : 1: 8 000
Date Released : 17th March 2016
Descriptions : This new edition includes updates covering Temasek Fairway, West Jurong Channel, Jurong Anchorages, west of Jurong Island and Sudong Anchorages.

The existing cell of the same name released on 07th May 2015 will be superseded.

ENC Name : SG5C4031
Location : Western Approaches to Jurong Island
Coverage : Lat 01° 10'150' N 01° 12'250' N
 Long 103° 38'500' E 103° 42'530' E
Compilation Scale : 1: 8 000
Date Released : 17th March 2016
Descriptions : This new edition includes updates covering Sudong Anchorages.

The existing cell of the same name released on 01st September 2014 will be superseded.

ENC Name : SG5C4033
Location : Tuas Bay, West Jurong Channel and Pesek Basin
Coverage : Lat 01° 16'300' N 01° 19'050' N
 Long 103° 38'000' E 103° 42'700' E
Compilation Scale : 1: 8 000
Date Released : 17th March 2016
Descriptions : This new edition includes updates covering Tuas Bay, West Jurong Channel and Pesek Basin.

The existing cell of the same name released on 07th May 2015 will be superseded.

II NEW PUBLICATIONS

NEW EDITION SINGAPOREAN CHART TO BE PUBLISHED ON 15TH FEBRUARY 2016

Chart Number	:	*GSP1
Title	:	Anchorage and Aids to Navigation
Coverage	:	Lat 01° 06.43' N 01° 29.40' N Long 103° 34.00' E 104° 08.10' E
Scale	:	1: 65 000
Date Published	:	15 th February 2016
Size of Chart	:	973.2 x 651.3mm
Descriptions	:	This new edition covers the eastern and western approaches to the port of Singapore. It includes updates on aids to navigation, working areas, submarine cables, updated contours covering west of Tuas View Reclamation, West Johor Strait, Temasek Fairway, West Jurong Channel, East Jurong Channel, Pasir Panjang, West Keppel Fairway, Western anchorages, Buran Channel, East Keppel Fairway, south of St John Island, East Johor Strait and around Pulau Tekong.

The existing chart of the same number published on 2nd March 2015 will be superseded.

* This chart is provided with a grid area reference.

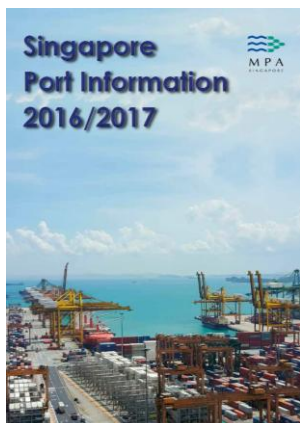
Chart Number	:	SP1
Title	:	Anchorage and Aids to Navigation
Coverage	:	Lat 01° 06.43' N 01° 29.40' N Long 103° 34.00' E 104° 08.10' E
Scale	:	1: 65 000
Date Published	:	15 th February 2016
Size of Chart	:	973.2 x 651.3mm
Descriptions	:	This new edition covers the eastern and western approaches to the port of Singapore. It includes updates on aids to navigation, working areas, submarine cables, updated contours covering west of Tuas View Reclamation, West Johor Strait, Temasek Fairway, West Jurong Channel, East Jurong Channel, Pasir Panjang, West Keppel Fairway, Western anchorages, Buran Channel, East Keppel Fairway, south of St John Island, East Johor Strait and around Pulau Tekong.

The existing chart of the same number published on 2nd March 2015 will be superseded.

II NEW PUBLICATIONS

NEW EDITION SINGAPORE PORT INFORMATION 2016/2017 PUBLISHED ON 4TH JANUARY 2016

Summary of Publication



This publication contains Port Information such as:

1. Routing and Reporting Information

- ❖ Straits Of Malacca And Singapore- Routeing System
- ❖ Mandatory Ship Reporting System In The Straits Of Malacca And Singapore – STRAITREP
- ❖ Rules For Vessels Navigating During Hours Of Darkness Through The Straits Of Malacca
- ❖ And Singapore (Recommendatory Measure)
- ❖ Revised Reporting Procedures For Notification And Confirmation Of A Vessel's Arrival In Singapore
- ❖ Amendment To Reporting Procedures For Vessels Manoeuvring In Port
- ❖ Guide To VHF Communication In Port And Singapore Strait
- ❖ VHF Radio Telephone Reporting Procedures For Vessel Manoeuvring Within The Traffic Information Area (TIA) In The East Johor Strait
- ❖ Tall Vessels' Movements In Port Waters Surrounding Changi Airport
- ❖ 15-Metre, 30-Metre, 49-Metre Height Restricted Areas In Port

2. Pilotage and Pilotage Exemption Information

- ❖ Pilotage
- ❖ Pilotage Exemption Course

3. Port Clearances and Reporting Procedures

- ❖ Port Health Clearance Procedures For Vessels Arriving Singapore
- ❖ Port Clearance Formalities For Arriving And Departing Vessels
- ❖ Reporting Of Marine Incidents In Port
- ❖ Dissemination Of Passage Plan To Shipmasters
- ❖ Conduct Of Mandatory Port Limit Courses
- ❖ Facilities For The Collection Of Garbage From Ships In Singapore
- ❖ Singapore Port Dues

4. Navigational Information

- ❖ Anchorages And Fairways , Least Depths Of Anchorages In The Port
- ❖ The Use Of Canoes And Kayaks Within The Port Limits Of Singapore
- ❖ Depths Of Navigational Channels ,Fairways, Rivers And Basins
- ❖ Vertical And Safe Overhead Clearances Under Bridges And Aerial Cableway

5. Information on Aids to Navigation

- ❖ IALA Maritime Buoyage System
- ❖ Characteristics Of Aids To Navigation - List Of Beacons, Buoys And Lighthouses
- ❖ Abbreviations For Light Characters And Colours On Light Buoys And Beacons
- ❖ Semaphore Tower At Pulau Satumu - Raffles Lighthouse

6. Information on Wharves, Docks and Berths

- ❖ Wharves And Berths
- ❖ Docks And Repair Berths Including Tug Facilities
- ❖ Berth Operators' Information And Tug Service Providers In Port

7. Communication – International Code of Signals

- ❖ International Code Of Signals (1969)
- ❖ Code Signals Frequently Used By Vessels Within Port Limits
- ❖ Sound Signals Frequently Used By Vessels Within Port Limits
- ❖ Directions To Tug From Assisted Vessel

II NEW PUBLICATIONS

8. Nautical Services and Products

- ❖ Index And Chart Catalogue Of Singaporean Charts
- ❖ Index And Chart Catalogue Of Dual Badged Charts
- ❖ Maritime and Port Authority of Singapore - Nautical Charts and Publications Distributors
- ❖ Singapore Electronic Navigational Charts Catalogue and Distributors
- ❖ Feedback Form
- ❖ Singapore DGPS Correction Service

9. Chartlets

- ❖ STRAITREP Operational Area (Sectors 1 To 9) and (Sectors 7 To 9)
- ❖ Reporting Points For Confirmation Of Arrivals
- ❖ Reporting Sectors
- ❖ Traffic Information Area
- ❖ Area In Which Tall Vessels Would Affect Aircraft Operations In Port Waters
- ❖ 15-Metre, 30-Metre, 49-Metre Height Restricted Areas
- ❖ Pilotage District Areas A, B And D
- ❖ Pilot Boarding Grounds
- ❖ Pilot Disembarkation Grounds
- ❖ Anchorages And Fairways In The Port
- ❖ Port of Singapore – Prohibited Areas
- ❖ Index of Singaporean Charts.
- ❖ Index of Dual Badged Charts

Frequency of Publication:

Once every 2 years.

The existing publication of Singapore Port Information 2014/2015 is superseded.

This publication would be available from the following Chart Distributors:

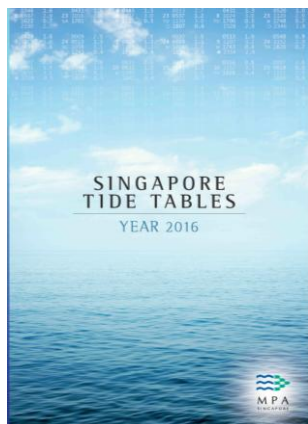
- 1) Chartco (Singapore) Pte Ltd
- 2) Cornes (Singapore) Pte Ltd
- 3) E.W. Liner Charts & Publications Pte Ltd
- 4) Global Navigation Solutions Pte Ltd
- 5) Motion Smith

(Please refer Page 32 for details)

II NEW PUBLICATIONS

SINGAPORE TIDE TABLES YEAR 2016 PUBLISHED ON 9TH SEPTEMBER 2015

Summary of Publication



This publication contains Tidal Height and Tidal Stream Predictions covering stations in Singapore Port Waters and along the Straits of Malacca and Singapore.

This publication consists of 5 segments.

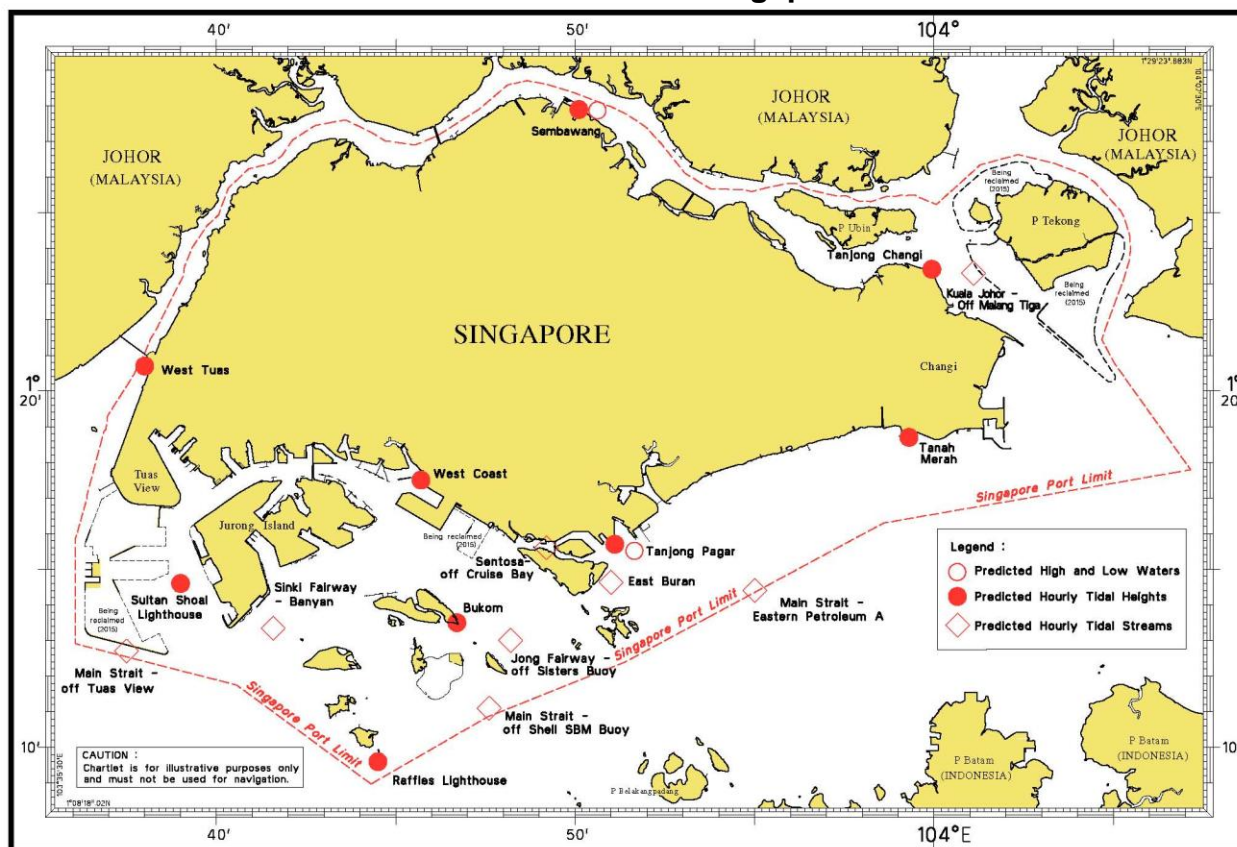
1. **High and Low Water Predictions** at the following stations:
 - a) Tanjong Pagar
 - b) Sembawang
2. **Hourly Tidal Height Predictions** at the following stations:
 - a) West Tuas
 - b) Sultan Shoal Lighthouse
 - c) Raffles Lighthouse
 - d) West Coast
 - e) Bukom
 - f) Tanjong Pagar
 - g) Tanah Merah
 - h) Tanjong Changi
 - i) Sembawang
 - j) Singapore Strait – Horsburgh Lighthouse
3. **Hourly Tidal Stream Predictions** at the following stations:
 - a) Main Strait – off Tuas View
 - b) Sinki Fairway – Banyan
 - c) Jong Fairway – off Sisters Buoy
 - d) Main Strait – off Shell SBM Buoy
 - e) Sentosa – off Cruise Bay
 - f) East Buran
 - g) Main Strait – Eastern Petroleum A
 - h) Kuala Johor – off Malang Tiga
4. **Maximum and Slack Tidal Stream Predictions** at the following stations:
 - a) Malacca Strait – off Pulau Iyu Kecil Light
 - b) Singapore Strait – Selat Phillip
 - c) Singapore Strait – Karang Banteng (Buffalo Rock)
 - d) Singapore Strait – Horsburgh Lighthouse
5. **Malacca Strait – High and Low Water Predictions** at the following stations:
 - a) Kedah Pier, Pulau Pinang
 - b) Port Dickson
 - c) Kuala Batu Pahat

The existing publication of Singapore Tide Tables Year 2015 is superseded.

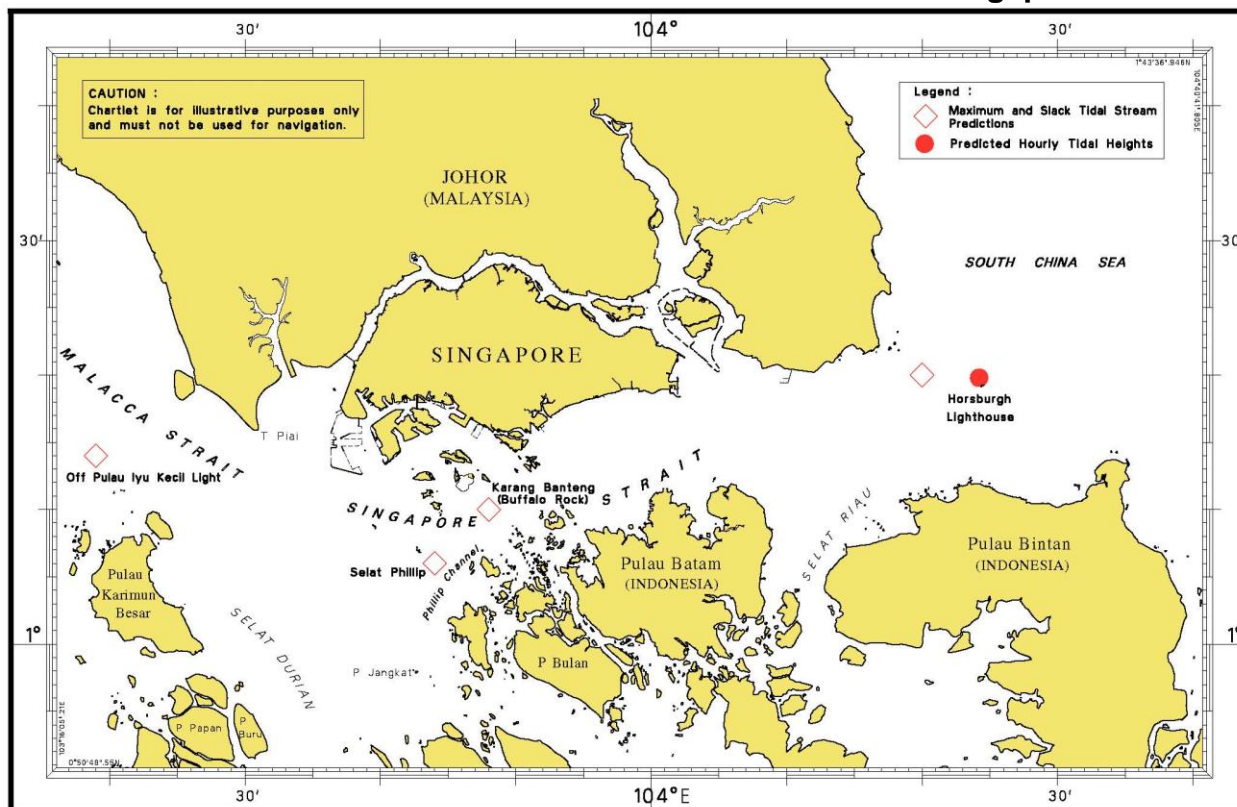
The locations of the above stations are shown in the chartlets below.

II NEW PUBLICATIONS

Tidal Prediction Stations within Singapore Port Waters

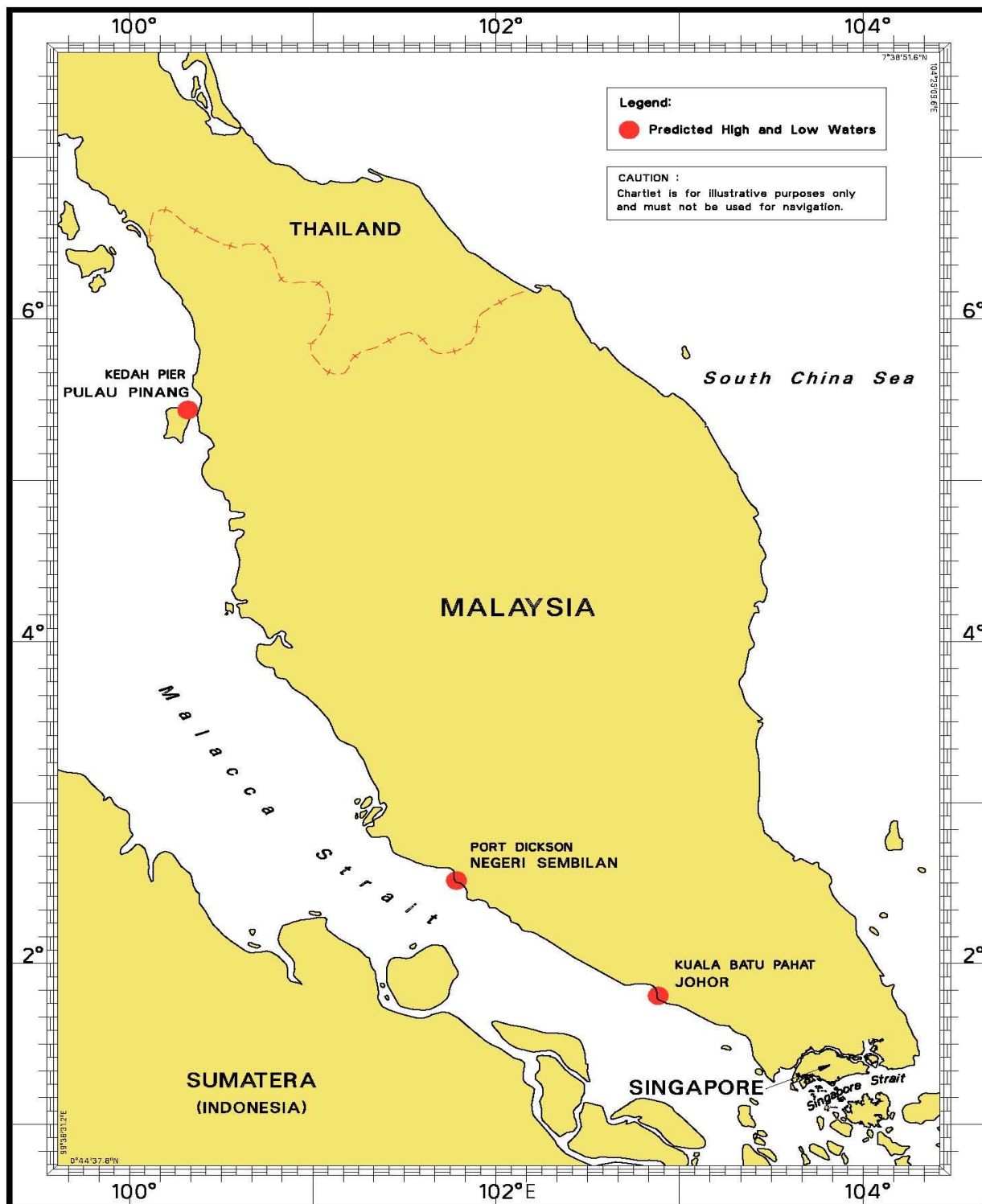


Tidal Prediction Stations in Straits of Malacca and Singapore



II NEW PUBLICATIONS

Tidal Prediction Stations in Malacca Strait







This publication is available from the following Chart Distributors:




1. Chartco (Singapore) Pte Ltd
2. Cornes Singapore Pte Ltd
3. E.W. Liner Charts & Publications Pte Ltd
4. Global Navigation Solutions (Singapore) Pte Ltd
5. Motion Smith

(Please refer Page 32 for details)

II NOTICES TO MARINERS AND CHART CORRECTIONS

202	7Ed 26/09/13 Last NM 03/2015	(DGST NTM NR 175/15)	NM 7/2016
Amend	light to <i>Al.BuY.4s</i>	1°05.70'N	103°15.11'E
	light to <i>Fl.R.5s</i>	1°08.85'N	103°17.02'E
	(Admiralty Notice No. 01/119/2016)		NM 8/2016
Insert	limit of anchorage area, pecked line joining	0°56.60'N	104°22.10'E
		0°56.05'N	104°23.50'E
		0°55.37'N	104°23.26'E
		0°55.93'N	104°21.90'E
		and	
		0°53.82'N	104°23.10'E
		0°52.99'N	104°23.69'E
		0°52.72'N	104°23.29'E
		0°53.56'N	104°22.72'E
		and	
		0°56.08'N	104°24.43'E
		0°56.29'N	104°24.43'E
		0°56.29'N	104°24.88'E
		0°56.08'N	104°24.88'E
		0°56.19'N	104°24.66'E
<hr/>			
500	7Ed 26/09/13 Last NM 03/2015	(DGST NTM NR 175/15)	NM 7/2016
Amend	light to <i>Al.BuY.4s</i>	1°05.70'N	103°15.11'E
<hr/>			
501	7Ed 01/09/15 Last NM 03/2015	(Maritime and Port Authority of Singapore)	*NM 9/2016
Insert		1°12.39'N	103°54.15'E
Insert		1°12.81'N	103°54.90'E
		(DGST)	NM10/2016
Insert	 <i>Al.Oc.BuY.3s</i>	1°12.70'N	103°54.52'E

II NOTICES TO MARINERS AND CHART CORRECTIONS

502	7Ed 01/09/15 Last NM 03/2015	(Maritime and Port Authority of Singapore)	*NM 9/2016
Insert			1°12-39'N 103°54-15'E
Insert			1°12-81'N 103°54-90'E
		(DGST)	NM10/2016
Insert	 Al.Oc.BuY.3s		1°12-70'N 103°54-52'E

II TEMPORARY AND PRELIMINARY NOTICES

*(NM 11P/2016)

SOUTH EAST ASIA – MIDDLE EAST – WESTERN EUROPE 5 CABLE SYSTEM (SEA-ME-WE 5) - CABLE LAYING OPERATIONS

Purpose : Submarine cable laying operations for the SEA-ME-WE 5 will be executed in the Precautionary Area Off Sultan Shoal Lighthouse and in the east-bound traffic lane of the Straits of Malacca and Singapore Traffic Separation Scheme.

Cable-Laying Vessel : 'CS FU HAI'

Call Sign : 3EGX3

Planned Dates of Operation : With effect from 10th February 2016 until 06th March 2016. 24 hours daily.

1. Working Route

The co-ordinates (WGS84) of the designated working route are tabulated below:

Waypoint		Co-ordinates (WGS84)		Remarks
		Latitude (N)	Longitude (E)	
From	28	01° 11.059'	103° 32.913'	Precautionary Area (Off Sultan Shoal Lighthouse)
To	30	01° 11.271'	103° 31.363'	
To	31	01° 11.846'	103° 29.882'	
To	32	01° 11.880'	103° 29.578'	
To	33	01° 11.901'	103° 29.391'	
To	36	01° 12.277'	103° 27.917'	
To	37	01° 12.578'	103° 26.889'	Separation Zone (Malacca to Iyu Kecil)
To	38	01° 12.687'	103° 26.110'	
To	39	01° 12.713'	103° 25.722'	
To	40	01° 12.898'	103° 25.111'	
To	41	01° 13.013'	103° 24.238'	
To	42	01° 13.108'	103° 23.978'	
To	43	01° 13.172'	103° 23.722'	
To	45	01° 13.545'	103° 22.702'	East-Bound Traffic Lane (Malacca to Iyu Kecil)
To	46	01° 14.078'	103° 21.174'	
To	47	01° 14.118'	103° 20.840'	
To	48	01° 14.156'	103° 20.359'	
To	49	01° 14.474'	103° 19.500'	
To	50	01° 14.478'	103° 19.478'	
To	51	01° 14.517'	103° 19.206'	
To	52	01° 14.486'	103° 18.953'	

2. Charts Affected : Singaporean 202, 500 and 501; Dual-Badged BA4038, BA4039 and BA4040; Singapore ENC SG5C4039.

3. Caution : Mariners are advised

- a) to navigate with caution.
- b) to give a wide berth when approaching the cable-laying vessel.

*Source: Maritime and Port Authority of Singapore

III NAVIGATIONAL INFORMATION

*(NM 12/2016) SINGAPORE PORT MARINE NOTICES/CIRCULARS

The Port Marine Notices/Circulars shortlisted below would be of particular interest to mariners. Details and complete list of Port Marine Notices/Circulars are available at this link: <http://www.mpa.gov.sg>

PMN No.	Subject
149/2015	Maritime and Port Authority of Singapore (Dangerous Goods Petroleum and Explosives)(Amendment) Regulations, 2015
03/2016	Works at Tuas Terminal Phase 1
04/2016	Construction of jetties at Tanah Merah staging ground
07/2016	Singapore Airshow 2016

PMC No.	Subject
14/2015	Cessation of compulsory maritime health declaration by vessels for EVD monitoring measures
2/2016	Additional 10% port dues concession for container vessels

*(NM 13/2016) SINGAPOREAN PRINT-ON-DEMAND (POD) CHARTS

Print-On-Demand (POD) Charts are the most up-to-date paper nautical charts printed for navigational use. These nautical charts are produced in accordance with the International Hydrographic Organisation (IHO) chart specifications. These official nautical charts are continually updated to the latest Notices to Mariners before they are printed and sold to users.

These POD Charts include 200, 201, 202, 500, 501, 502 and 503.

BENEFITS TO OUR CUSTOMERS

Convenience

Customers need not make numerous hand corrections to the nautical charts before use. In addition the updated POD Charts are more accurate and reliable than offset printed charts with hand corrections.

Clarity

Clarity in the presentation of updated information as compared to lithographic printed charts, where in some cases there are several overlapping corrections over existing information.

Coverage

The POD Charts cover the Straits of Malacca and Singapore, from One Fathom Bank to Horsburgh Lighthouse.

*Source: Maritime and Port Authority of Singapore

III AMENDMENTS TO PUBLICATIONS

***(NM 14/2016) UPDATING OF PUBLICATION “SINGAPORE PORT INFORMATION 2016/2017”**

1. Page 12 - Item (f)

IN THE SINGAPORE STRAIT (MAIN STRAIT)

Amend the following:

	Delete		Insert	
(viii)	01°08.09'N	103°46.72'E	01°08.90'N	103°46.72'E

2. Page 105

LEAST DEPTHS OF ANCHORAGES

Amend the following:

No.	Anchorages	Depth (m)	
		Delete	Insert
26	Sudong Petroleum Holding (ASPH)	21.6	21.7
27	Sudong Bunkering B (ASUBB)	19.3	19.5

3. Page 111

DEPTHS OF RIVERS AND BASINS

Amend the following:

LOCATIONS	DEPTHS (m)	
	Delete	Insert
Northern Tuas Basin (south of lat 01° 18.7'N)	3.9	4.0

4. Page 135

WEST JURONG CHANNEL

Amend the following:

Name of Beacon/Buoy	Position	
	Delete	Insert
Long Shoal Buoy	01°16.084'N 103°39.765'E	01°17.084'N 103°39.765'E

III AMENDMENTS TO PUBLICATIONS

5. Page 162

WHARVES AND BERTHS

Insert the following:

2A TUAS – SINGAPORE LUBE PARK (1°16.5'N, 103°36.6'E)

Berth	Length of Berth Box	Width of Berth	Depth Alongside (Year Surveyed)	Controlling Depth In Approaches
OSLP1	220	34m	14.9m (2015)	-
OSLP2	216.7m	34m	16.5m (2015)	-
OSLP3	78m	13m	15.9m (2015)	-
OSLP4	78m	13m	15.9m (2015)	-

6. Page 172

WHARVES AND BERTHS

Amend the following:

40 PULAU BUSING (TANKSTORE PTE LTD) (1°14.4'N, 103°44.7'E)

Berth	Length of Berth Box	Max Displ. (tonnes)	Max LOA	Depth Alongside (Year Surveyed)	Controlling Depth In Approaches
OTS1	388m	276,710	360m	16.7m (2015)	17.8m from West (Selat Sinki) 16.4m from East (Jong Fairway)
OTS2	336m	224,475	312m	16.8m (2015)	
OTS3	122m	17,455	102m	14.1m (2015)	
OTS4	138m	17,455	115m	12.7m (2015)	7.0m (130m South of Berth)
OTS5	281.1m	292,940	280m	14.7m (2015)	7.0m (230m South East of Berth)
OTS5E&W	-	163,150	140m	14.7m (2015)	15.2m from West (Selat Sinki) 16.4m from East (Jong Fairway)
OTS6W	132m	-	-	7.1m (2015)	
OTS6E	132m	-	-	10.9m (2015)	6.0m
OTS7	280m	156,000	280m	15.3m (2015)	6.0m
OTS8	308m	156,000	280m	17.1m (2015)	15.3m from East and West
OTS9	168m	65,000	200m	17.5m (2015)	16.1m from West
OTS10	213m	61,500	185m	16.0m (2015)	15.3m from East
					14.8m

Berth	DEPTH ALONGSIDE (m)	APPROACH DEPTH (m)	Max LOA (m)	MAX DISPL. (tonnes)	REMARKS
OTS1	16.7	17.8m from West (Selat Sinki) 16.4m from East (Jong Fairway)	360	276,710	Shallower depths of 16.2m, 14.9m exist West of berth
OTS2	16.8		312	224,475	
OTS3	14.1		102	17,455	
OTS4	12.7	7.0m (130m South of Berth)	115	17,455	
OTS5	14.7	7.0m (230m South East of Berth)	280	292,940	See Note 6
OTS5E&W	14.7	15.2m from West (Selat Sinki) 16.4m from East (Jong Fairway)	140	163,150	See Note 6
OTS6W	7.1		120	12,000	
OTS6E	10.9		120	12,000	

III AMENDMENTS TO PUBLICATIONS

7. Page 173

WHARVES AND BERTHS

Amend the following:

Berth	DEPTH ALONGSIDE (m)	APPROACH DEPTH (m)	Max LOA (m)	MAX DISPL. (tonnes)	REMARKS
OTS7	15.3	15.2m from East and West	280	156,000	See Note 6
OTS8	17.1	14.6m from West 15.2m from East	280	156,000	See Note 6
OTS9	17.5	14.6m from West 15.3m from East	200	65,000	See Note 6 & 7
OTS10	16.0	14.8m	185	61,500	See Note 6 Inner berth (Daylight Movements only)

DB Chart: 4032

PILOTAGE GUIDELINES

Amend the following:

	Delete	Insert
i)	OTS1, OTS2, OTS4, OTS5, OTS5E & OTS5W	OTS1, OTS2, OTS4, OTS5, OTS5E & OTS5W, OTS6E &
ii)	OTS7, OTS8 & OTS9	OTS6W , OTS7, OTS8 & OTS9

8. Page 174

WHARVES AND BERTHS

Amend the following:

	Delete	Insert
ii)	OTS1 & OTS6 & OTS10	OTS3, OTS6E & OTS6W , OTS10

Amend the following:

b) **Flood Tide (Starboard A/S)**

	Delete	Insert
i)	OTS1, OTS2, OTS4, OTS5, OTS6, OTS5E & OTS5W, OTS7, OTS8 & OTS9	OTS1, OTS2, OTS4, OTS5, OTS5E & OTS5W, OTS6E & OTS6W , OTS7, OTS8 & OTS10

9. Page 179

WHARVES AND BERTHS**PASIR PANJANG TERMINAL (PSA SINGAPORE TERMINALS) (1°17'2"N, 103°46'1"E)**

Insert the following:

Berth	Length of Berth Box	Depth Alongside (Year Surveyed)	Controlling Depth In Approaches
P37	312.5m	*18.0m	-

III AMENDMENTS TO PUBLICATIONS

10. Page 205

MARITIME AND PORT AUTHORITY OF SINGAPORE NAUTICAL CHARTS AND PUBLICATIONS DISTRIBUTORS

Amend the following:

Chart Distributor : **Chartco (Singapore) Pte Ltd**
Address : 896 Dunearn Road
 #03-05 Sime Darby Centre
 Singapore 589472
Telephone : **(65) 6545 9880 Ext 65285**
Fax : (65) 6545 8892
Email : **leslie.khoo@chartco.com**
Internet Web Site : **http://www.chartco.com**

Chart Distributor : **Global Navigation Solutions Pte Ltd**
Address : 2 Boon Leat Terrace #05-02/03/04,
 Harbourside Building 2
 Singapore 119844
Telephone : (65) 6270 4060
 : **(After Office hours: (65) 9632 5268)**
Fax : (65) 6276 3858
Email : **sg-stock@gnsworldwide.com**
Internet Web Site : **http://www.gnsworldwide.com**

Chart Distributor : **E.W. Liner Charts & Publications Pte Ltd**
Address : 100, Pasir Panjang Road, #05-10
 Singapore 118518
Telephone : (65) 6323 0773
Fax : (65) 6323 0775
Email : **sales@ewliner.com**
Internet Web Site : **http://www.ewliner.com**

11. Page 206

MPA APPOINTED ELECTRONIC NAVIGATIONAL CHART (ENC) DISTRIBUTORS

Amend the following:

DISTRIBUTOR	ADDRESS	TELEPHONE/FAX NO./EMAIL/WEBSITE
Global Navigation Solutions Pte Ltd	2 Boon Leat Terrace, #05-02/03/04 Harbourside Building 2, Singapore 119844	Tel. No.: +65 6270 4060 Fax No.: +65 6276 3858 Email: sg-stock@gnsworldwide.com Website: http://www.gnsworldwide.com

III AMENDMENTS TO PUBLICATIONS

*(NM 15/2016) UPDATING OF PUBLICATION "SINGAPORE TIDE TABLES YEAR 2016"

1. Page 6

TIDAL LEVELS FOR TIDAL STATIONS

Insert the following:

Stations/Positions in WGS 84	Height In Metres Above Chart Datum					Reference To SHD
	MHWS	MHWN	MLWN	MLWS	ML	
West Tuas 01°20.7'N 103°38.0'E	3.0	2.2	1.2	0.3	1.7	-

2. Page 275

DISTRIBUTORS FOR THE MARITIME AND PORT AUTHORITY OF SINGAPORE PUBLICATIONS

Amend the following:

Chart Distributor : **Chartco (Singapore) Pte Ltd**
Address : 896 Dunearn Road
 #03-05 Sime Darby Centre
 Singapore 589472
Telephone : **(65) 6545 9880 Ext 65285**
Fax : (65) 6545 8892
Email : **leslie.khoo@chartco.com**
Internet Web Site : **http://www.chartco.com**

Distributor : **Global Navigation Solutions Pte Ltd**
Address : 2 Boon Leat Terrace #05-02/03/04,
 Harbourside Building 2
 Singapore 119844
Telephone : (65) 6270 4060
 After Office hours: (65) 9632 5268
Fax : (65) 6276 3858
Email : **sg-stock@gnsworldwide.com**
Internet Web Site : **http://www.gnsworldwide.com**

Distributor : **E.W. Liner Charts & Publications Pte Ltd**
Address : 100, Pasir Panjang Road, #05-01,
 Singapore 118518
Telephone : (65) 6323 0773
Fax : (65) 6323 0775
Email : **sales@ewliner.com**
Internet Web Site : **http://www.ewliner.com**

IV REPRINT OF RADIO NAVIGATIONAL WARNINGS

The following Radio Navigational Warnings have been shortlisted, as they would be of particular interest to mariners.

TT175

VESSELS IN EAST JOHOR STRAIT ARE ADVISED TO NAVIGATE WITH PARTICULAR ALERTNESS AND CAUTION WHEN NEAR THE PROJECT AREAS OFF PULAU TEKONG, CHANGI AND MALANG PAPAN AS SHALLOW WATER AREAS EXIST. VESSELS ARE REMINDED TO PROCEED AT A SAFE SPEED AND MAINTAIN A PROPER LOOK-OUT, PARTICULARLY FOR TUGS AND BARGES NAVIGATING NEAR THE PROJECT AREAS AND PASSENGER FERRIES CROSSING BETWEEN CHANGI AND PULAU TEKONG AND VICINITY OF PASIR GUDANG.

TT273

ALL VESSELS ARE ADVISED TO NAVIGATE WITH CAUTION, COMPLY WITH THE INTERNATIONAL COLLISION REGULATIONS, MAINTAIN VHF RADIO WATCH AND LISTEN TO TRAFFIC INFORMATION WHEN NAVIGATING IN THE SINGAPORE STRAIT AND PORT WATERS. MARINERS ARE ALSO ADVISED TO KEEP A GOOD LOOKOUT OF FREQUENT FERRIES CROSSING THE SINGAPORE STRAIT.

TT282

RACON DELTA Q(6)LFL.15S IN POSITION LAT 01- 03.60N LONG 103-38.85E IS REPORTED UNLIT. ALL VESSELS ARE ADVISED TO NAVIGATE WITH CAUTION.

TT285 (AMENDED ON 28 DEC 2015 0112Z)

A SUNKEN YACHT IS LOCATED AT POSITION 01-17.83N 104-23.69E. ALL VESSELS ARE ADVISED TO NAVIGATE WITH PARTICULAR CAUTION.

TT292 (AMENDED ON 181630UTC DEC 2015)

A WRECK IS LOCATED AT 01-12.80N 103-54.89E IN THE EAST BOUND LANE OF SINGAPORE STRAIT. AN EMERGENCY WRECK MARKING BUOY WITH A LIGHT CHARACTERISTIC OF ALTERNATING OCCULTING BLUE YELLOW 3 SECONDS HAS BEEN INSTALLED AT POSITION 01-12.74N 103-54.78E IN THE EAST BOUND LANE OF THE SINGAPORE STRAIT. MARINERS ARE ADVISED TO NAVIGATE WITH CAUTION.

TT296

CS 'ASEAN PROTECTOR' WILL BE CARRYING OUT UNDERWATER CABLE LAYING OPERATIONS AT THE FOLLOWING COORDINATES:

FROM WAYPOINT 1 01-17.158N 103-36.957E

TO WAYPOINT 2 01-16.597N 103-36.351E

TO WAYPOINT 3 01-15.776N 103-36.134E

TO WAYPOINT 4 01-14.888N 103-36.068E

TO WAYPOINT 5 01-13.392N 103-35.931E

TO WAYPOINT 6 01-10.969N 103-35.703E

TO WAYPOINT 7 01-10.869N 103-35.648E

TO WAYPOINT 8 01-10.814N 103-35.574E

TO WAYPOINT 9 01-10.770N 103-35.399E

TO WAYPOINT 10 01-10.766N 103-35.301E

TO WAYPOINT 11 01-10.885N 103-34.189E

TO WAYPOINT 12 01-11.059N 103-32.913E

VESSEL ARE REQUESTED TO KEEP WELL CLEAR OF THE OPERATIONS AREA.

TT297 (AMENDED ON 120058Z)

BATU BERHANTI ISLOATED DANGER BUOY FL (2) 5SECS IN POSN 01-11.7N 103-52.51E HAS BEEN REMOVED FOR MAINTENANCE. ALL VESSELS ARE ADVISED TO NAVIGATE WITH PARTICULAR CAUTION.

IV

REPRINT OF RADIO NAVIGATIONAL WARNINGS

TT961

VESSELS INTENDING TO CROSS THE TRAFFIC SEPARATION SCHEME (TSS) OR PRECAUTIONARY AREAS IN THE SINGAPORE STRAIT DURING THE HOURS OF DARKNESS ARE RECOMMENDED TO DISPLAY THE NIGHT SIGNALS CONSISTING OF 3 ALL ROUND GREEN LIGHTS IN A VERTICAL LINE AS DETAILED IN MARITIME AND PORT AUTHORITY OF SINGAPORE'S PORT MARINE CIRCULAR, 02 OF 2011 DATED 30 MAY 2011.

ISSUED BY SINGAPORE PORT OPERATIONS CONTROL CENTRE (as at 24th January 2016)

V

EXTRACT OF ADMIRALTY NOTICES TO MARINERS FOR DUAL-BADGED CHARTS

These notices can also be accessed directly from UKHO Website:

<http://www.ukho.gov.uk/ProductsandServices/MaritimeSafety/Pages/NMPublic.aspx>

204* SINGAPORE - Temasek Fairway, Sinki Fairway and Selat Pauh - Depths. Buoy. Light-beacon. Obstruction.

Source: Maritime and Port Authority of Singapore

Chart 4030 [previous update 6124/15] WGS84 DATUM

Insert	depth, $I4_8$, enclosed by 15m contour	1° 16'·241N., 103° 38'·596E.
	depth, $I4_9$, enclosed by 15m contour	1° 16'·284N., 103° 38'·857E.

Chart 4031 [previous update 5187/15] WGS84 DATUM

Insert	 Fl(2)10s11m5M Banyan	(a) 1° 13'·346N., 103° 41'·585E.
Delete	 <i>Fl(2)10s Banyan</i> , close SW of:	(a) above

Chart 4032 [previous update 5187/15] WGS84 DATUM

Insert	 Fl(2)10s11m5M Banyan	(a) 1° 13'·346N., 103° 41'·585E.
Replace	depth, $I1_9$, with  <i>Obstn</i>	1° 12'·971N., 103° 44'·927E.
Delete	 <i>Fl(2)10s Banyan</i> , close SW of:	(a) above

Chart 4033 [previous update 5517/15] WGS84 DATUM

Insert	depth, $I4_8$, enclosed by 15m contour	1° 16'·241N., 103° 38'·596E.
	depth, $I4_9$, enclosed by 15m contour	1° 16'·284N., 103° 38'·857E.


Chart 4036 [previous update 5449/15] WGS84 DATUM

Replace	depth, $I1_9$, with  <i>Obstn</i>	1° 12'·971N., 103° 44'·927E.
---------	---	------------------------------

Chart 4038 [previous update 6124/15] WGS84 DATUM




Insert	depth, $I4_8$, enclosed by 15m contour	1° 16'·24N., 103° 38'·60E.
	depth, $I4_9$, enclosed by 15m contour	1° 16'·28N., 103° 38'·86E.
Delete	depth, $I5_4$, close W of:	(a) above

Chart 4039 [previous update 6124/15] WGS84 DATUM

Insert	 Fl(2)10s11m5M Banyan	(a) 1° 13'·35N., 103° 41'·60E.
Replace	depth, $I1_9$, with  <i>Obstn</i>	1° 12'·97N., 103° 44'·93E.
Delete	 <i>Fl(2)10s Banyan</i> , close SW of:	(a) above

V
EXTRACT OF ADMIRALTY NOTICES TO MARINERS
FOR DUAL-BADGED CHARTS

Chart 4040 [*previous update 6124/15*] WGS84 DATUM

Insert	depth, 14₈ , enclosed by 15m contour  Fl(2)10s11m5M Banyan	1° 16'·24N., 103° 38'·60E. (a) 1° 13'·35N., 103° 41'·59E.
Replace	depth, 14₄ , with depth, 14₉ depth, 11₉ , with  Obstn	1° 16'·28N., 103° 38'·86E. 1° 12'·97N., 103° 44'·93E.
Delete	 Fl(2)10s Banyan , close SW of:	(a) above

Updated to Admiralty Notices to Mariners Edition No. 03 of 2016 dated 21st January 2016.

SINGAPORE ENC DISTRIBUTORS

ENC DISTRIBUTOR	ADDRESS	TEL/FAX /EMAIL/WEBSITE
ChartWorld GmbH ChartWorld Asia Pacific Pte Ltd.	Atlantic Haus, Zirkusweg 1 D-20359 Hamburg Germany Frontech Centre 07-01 15 Jalan Kilang Barat Singapore 159357	Tel: +49 40 853 58 6942 Fax: +49 40 853 58 6949 Email: sales@chartworld.com Tel: +65 6513 3500 Website: http://www.chartworld.com http://www.ecdis-as-a-service.com
Global Navigation Solutions Pte Ltd	2 Boon Leat Terrace #05-02/03/04, Harbourside Building 2 Singapore 119844	Tel: +65 6270 4060 Fax: +65 6276 3858 Email: sg-stock@gnsworldwide.com Website: www.gnsworldwide.com
Maritime Information Systems (MARIS) Maritime Information Systems AS (MARIS)	52, Telok Blangah Road #01-06 Telok Blangah House Singapore 058809 Danholmen 25, 3128 Notteroy Norway	Tel: +65 6276 1472 Fax: +65 6276 1473 Email: : support@maris.sg Website: http://www.maris.no Tel: +47 33 30 42 50 Fax: +47 33 30 42 51 Email: : sales@maris.no Website: http://www.maris.no
Motion Smith	15 Jalan Kilang Barat #08-01/05 Frontech Centre Singapore 159357	Tel: +65 6220 5098 Fax: +65 6225 4902 Email: sales@motsmith.com Website: http://www.motsmith.com
Transas Marine Pacific Pte Ltd	Cyber Centre 16/18 Jalan Kilang Barat Off Jalan Bukit Merah Singapore 159358	Tel: +65 6271 0200 Fax: +65 6271 7300 Email: navigation.asia@transas.com Website: http://www.transas.com
Japan Hydrographic Association (Electronic Charts Division)	Daiichi Sogo Bldg, 6F 1-6-6, Hanedakuko, Ota-ku Tokyo 144-0041, Japan	Tel: +81 3 5708 7093 Fax: +81 3 5708 7094 Email: shimizu-6kj@jha.jp Website: http://www.jha.or.jp/en/jha/
Jeppesen Norway AS	P.O Box 212 , N-4371 Egersund Norway	Tel: +47 51 46 4700 Fax: +47 51 46 4701 Email: license.marine@jeppesen.com Website : http://www.jeppesen.com/marine
PRIMAR STAVANGER	Lervigsveien 36, P.O Box 60 N-4001 Stavanger, Norway	Tel: +47 51 93 9500 Fax: +47 51 93 9501 Email: sales@ecc.no Website : http://www.primar.no
The United Kingdom Hydrographic Office	Admiralty Way, Taunton Somerset, TA1 2DN United Kingdom	Tel: +44 1823 33 7900 Fax: +44 1823 28 4077 Emails: ENCS.SalesReports@ukho.gov.uk Website: http://www.ukho.gov.uk

Chart Distributors for the Maritime and Port Authority of Singapore
Nautical Charts and Publications

Please approach any of the Chart Distributors to purchase the Singapore Nautical Charts and Publications.

CHART DISTRIBUTORS	ADDRESS	TEL/FAX/EMAIL/WEBSITE
Chartco (Singapore) Pte Ltd	896 Dunearn Road #03-05 Sime Darby Centre Singapore 589472	Tel: +65 6545 9880 Ext 65285 Fax: +65 6545 8892 Email: leslie.khoo@chartco.com Website: http://www.chartco.com
Cornes (Singapore) Pte Ltd	10 Anson Road #23-06/6A International Plaza Singapore 079903	Tel: +65 6223 8320 Fax: +65 6223 8321 Email: sales9850@cspl.sg Website: http://www.cornes-charts.com
E.W. Liner Charts & Publications Pte Ltd	100, Pasir Panjang Road #05-10 Singapore 118518	Tel: +65 6323 0773 Fax: +65 6323 0775 Email: sales@ewliner.com Website: http://www.ewliner.com
Global Navigation Solutions Pte Ltd	2 Boon Leat Terrace #05-02/03/04, Harbourside Building 2 Singapore 119844	Tel: +65 6270 4060 (After office hours: +65 9632 5268) Fax: +65 6276 3858 Email: sg-stock@gnsworldwide.com Website: www.gnsworldwide.com
Motion Smith	15 Jalan Kilang Barat #08-01/05 Frontech Centre Singapore 159357	Tel: +65 6220 5098 (After office hours: +65 8163 9993) Fax: +65 6225 4902 Email: sales@motsmith.com Website: http://www.motsmith.com

HYDROGRAPHIC NOTE - Instructions

1. Mariners are requested to notify the Chief Hydrographer, Maritime and Port Authority of Singapore, when new or suspected dangers to navigation are discovered, changes are observed in aids to navigation or where corrections to nautical publications may be necessary. Reports, which cannot be confirmed or are lacking in certain details should not be withheld.
2. Any ambiguities of time, positioning and depth should be stressed and any firm expectation of being able to check the information provided on a following voyage should be mentioned.
3. Mariners using satellite position fixing systems, eg. GPS, should provide details of equipment and datum used (where applicable). Where bearings (true or magnetic) are taken visually or by radar to fix a position, it should include more than two objects in order to provide a check on its accuracy. A position may also be defined by bearing and distance from a conspicuous object eg. beacon, lighthouse etc.
4. The note should include a tracing or a digital image of the chart used and the details should be clearly marked.
5. Echo sounders frequently register greater depths than the advertised maximum depth for the equipment, eg. a trace appearing at 50 metres may be in fact be 550 metres or even 1050 metres for equipment whose maximum depth is 500 metres. Erroneous depths caused by 2nd transmission error can usually be recognised by the following:
 - (a) the tracing being weaker than normal for the depth registered,
 - (b) the trace appearing to pass through the transmission line,
 - (c) the feathery nature of the trace.
6. Upon receipt of a hydrographic note, a Notice to Mariners may be issued. The sender's vessel or name is quoted as the source unless the same information is also received in foreign Notices to Mariners.
7. Reports of shoals, uncharted dangers and defects in aids to navigation may also be made to the appropriate Singapore Port Operations Control Centre on VHF Channels 10, 12, 14, 68 or 73.

HYDROGRAPHIC NOTE

To:

Chief Hydrographer
Maritime and Port Authority of Singapore
7B Keppel Road #20-00 Tanjong Pagar Complex
Singapore 089055

Tel : (65) 6325 2027
Fax : (65) 6226 1076
Email : hydrographic@mpa.gov.sg

Sender's Contact Details :

Date :

Name of Vessel :

Address of Sender :

Tel : Fax :

Email :

Nature of Observation :

General Location :

Subject :

Position : Lat. Long.

Charts Used :

Date & Time of Observation :

Details :

.....

.....

Attachment :

Equipment Used :

Type of Position Fixing : GPS / DGPS Others :

Type of Echo Sounder :

Name and Signature :

Ship's/Company's Stamp :