



## SINGAPOREAN NOTICES TO MARINERS

---

	<b>CONTENT</b>	<b>Page</b>
I	Index of Charts & Publications	69
II	New Publications	72
	Notices to Mariners and Chart Corrections	74
	Temporary and Preliminary Notices	76
III	Navigational Information	77
	Amendments to Publications	78
IV	Reprint of Radio Navigational Warnings	79
V	Reprint of Admiralty Notices to Mariners for Dual Badged Charts	80

---

**The monthly Notices to Mariners contain corrective information affecting charts published by the Hydrographic Department, Maritime and Port Authority of Singapore. The information contained in these Notices should be updated on the charts affected. Notices under Section II apply only to the particular Singaporean Chart(s) indicated.**

---

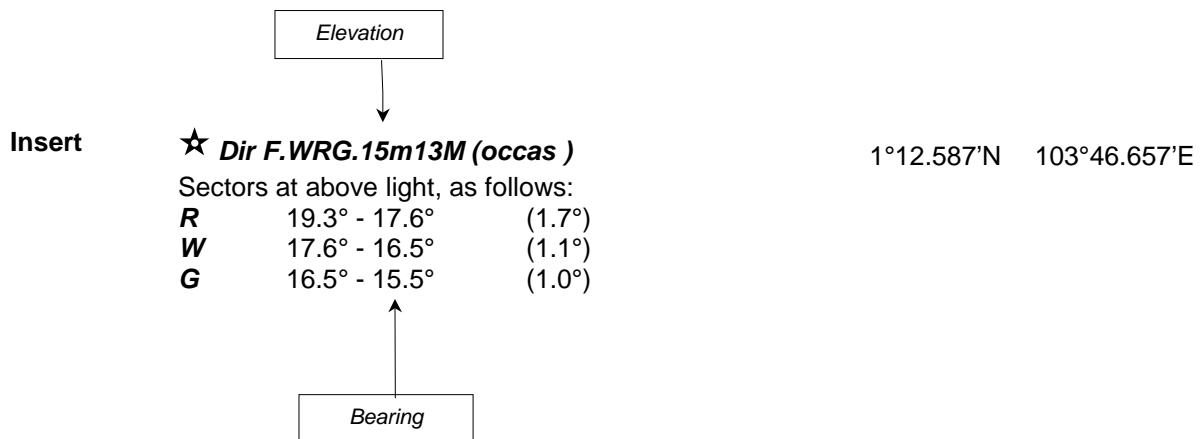
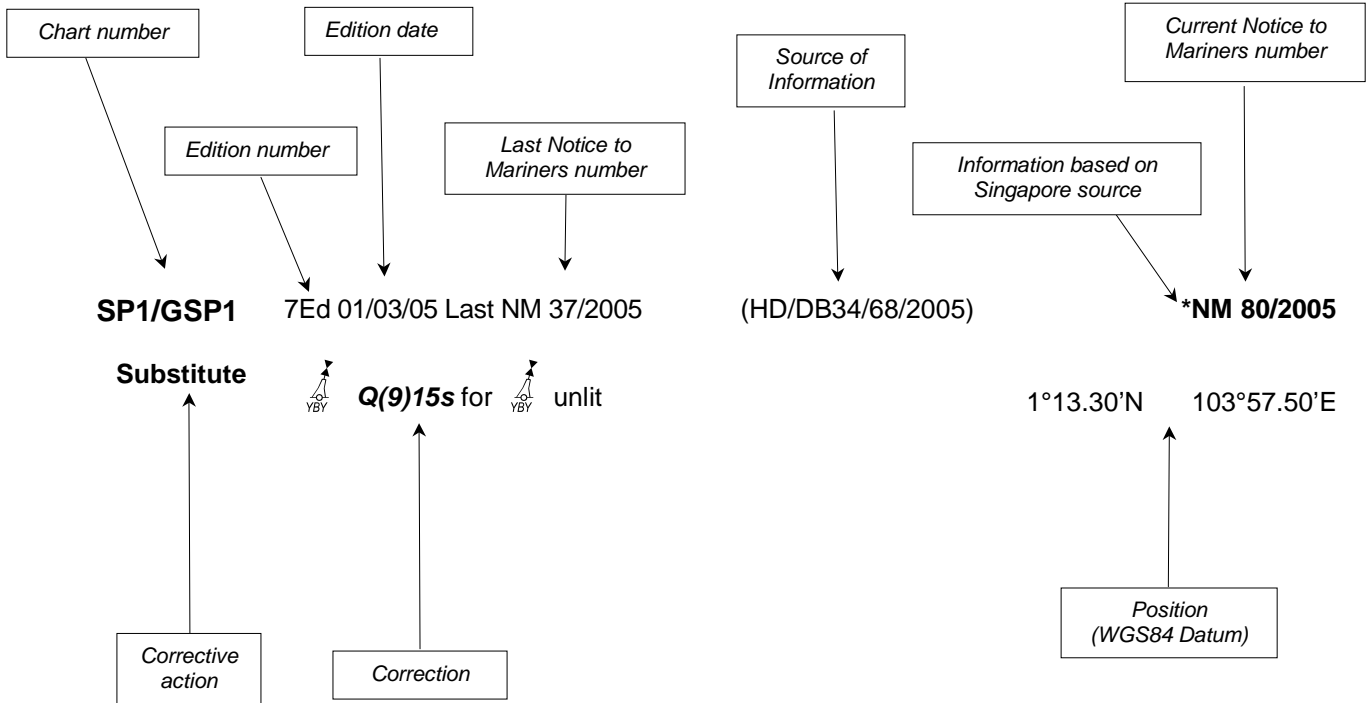
Mariners are requested to notify the Chief Hydrographer, Maritime and Port Authority of Singapore, immediately on the discovery of new dangers or suspected dangers to navigation and of changes or defects in aids to navigation. See Hydrographic Note on back page.

The monthly Singaporean Notices to Mariners can be accessed directly from the MPA website:  
<http://www.mpa.gov.sg/infocentre/publications/noticesmari.htm>  
This service is offered free of charge.

Hydrographic Department  
Maritime and Port Authority of Singapore  
P.O. Box 313  
PSA Building Post Office  
Singapore 911141  
Tel : (65) 6375 1227  
Fax : (65) 6278 7646

## EXPLANATION OF FORMAT

The elements of a typical chart correction are explained below.



### Notes:

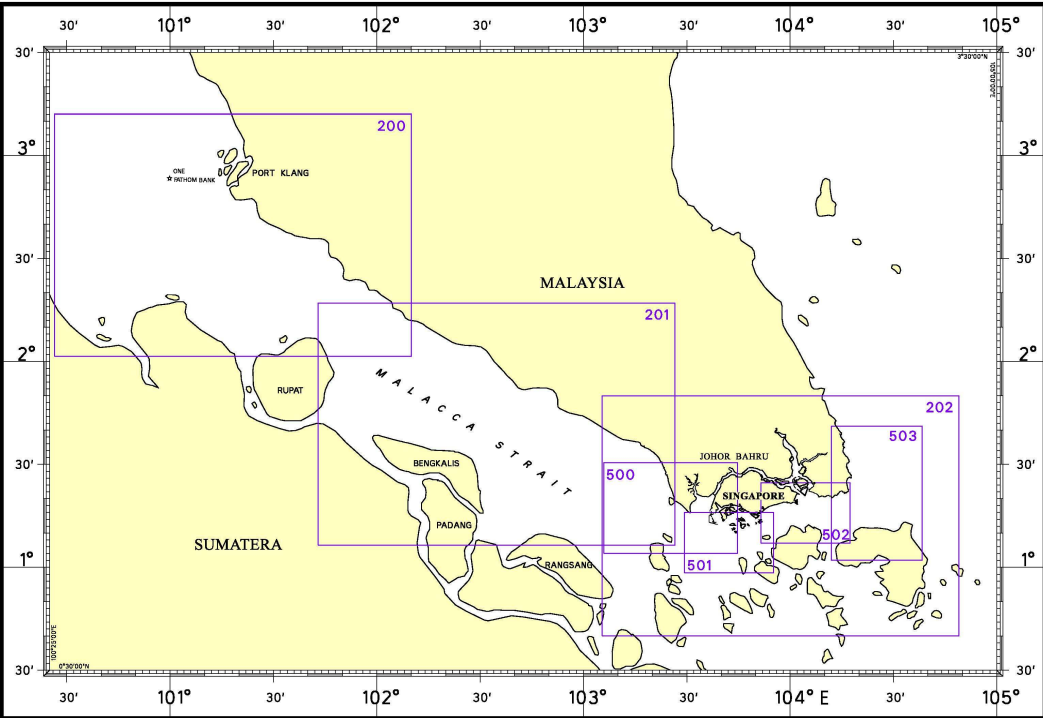
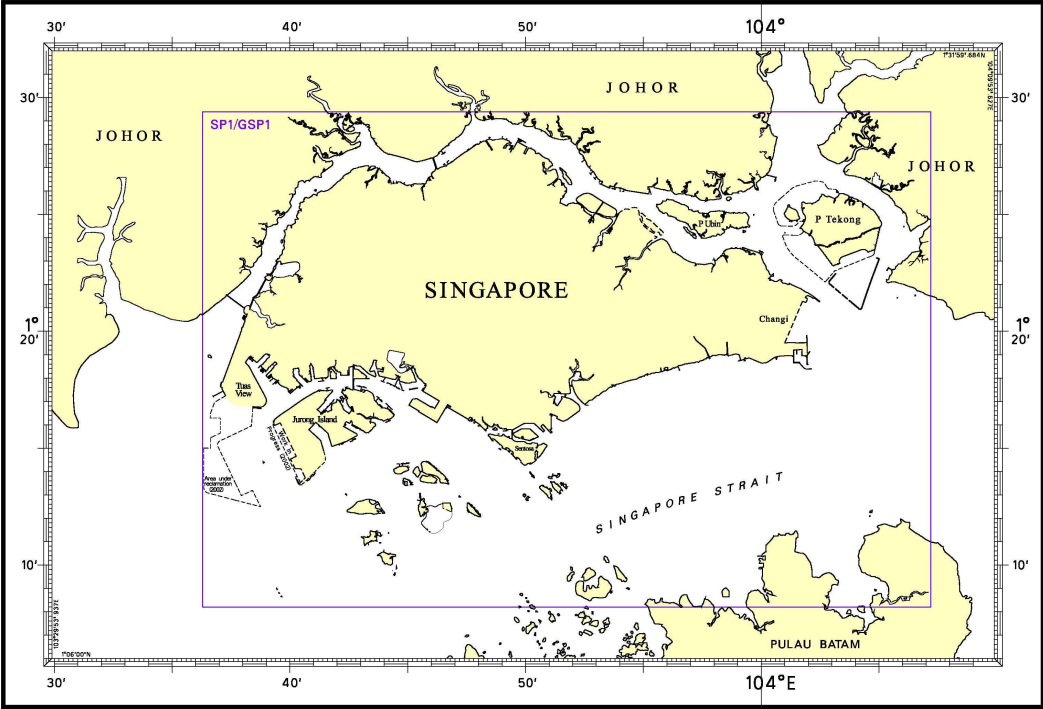
- a) Notice to Mariners number followed by:
  - T** indicates a Temporary Notice (eg. \*NM 80T/2005).
  - P** indicates a Preliminary Notice (eg. \*NM 80P/2005).
- b) Bearings are referred to True Compass in degrees clockwise from 000° to 359°. Bearings related to lights are from seaward.
- c) Heights and elevations are above Mean High Water Springs.

## I

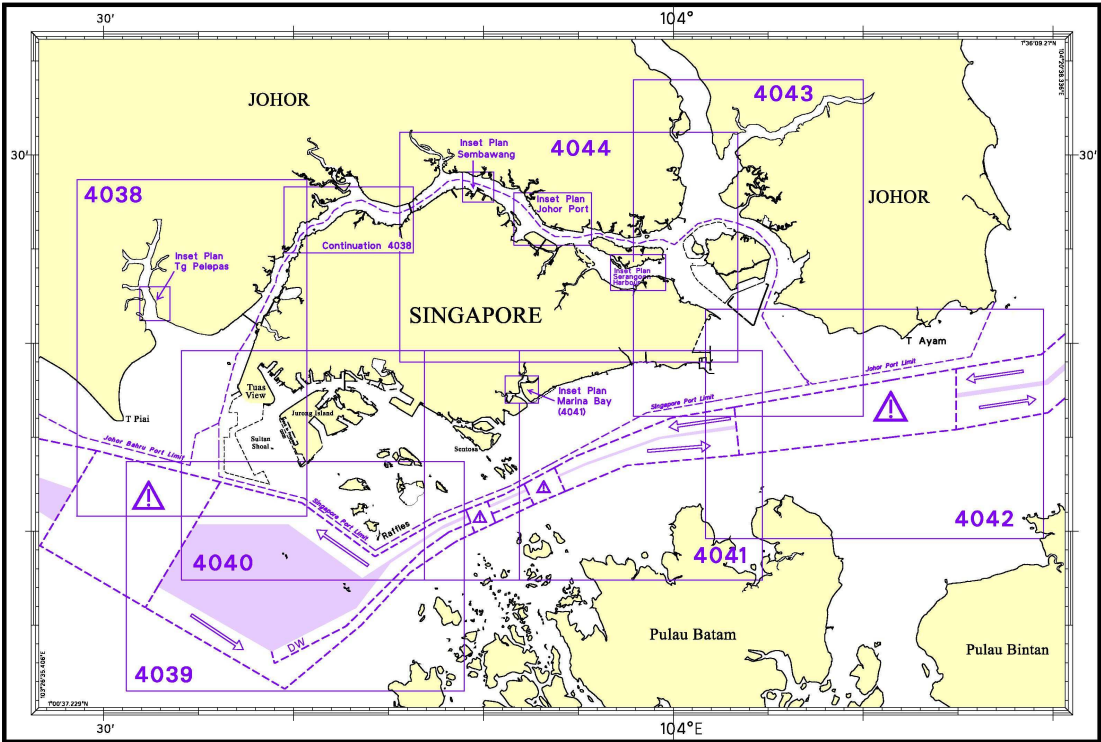
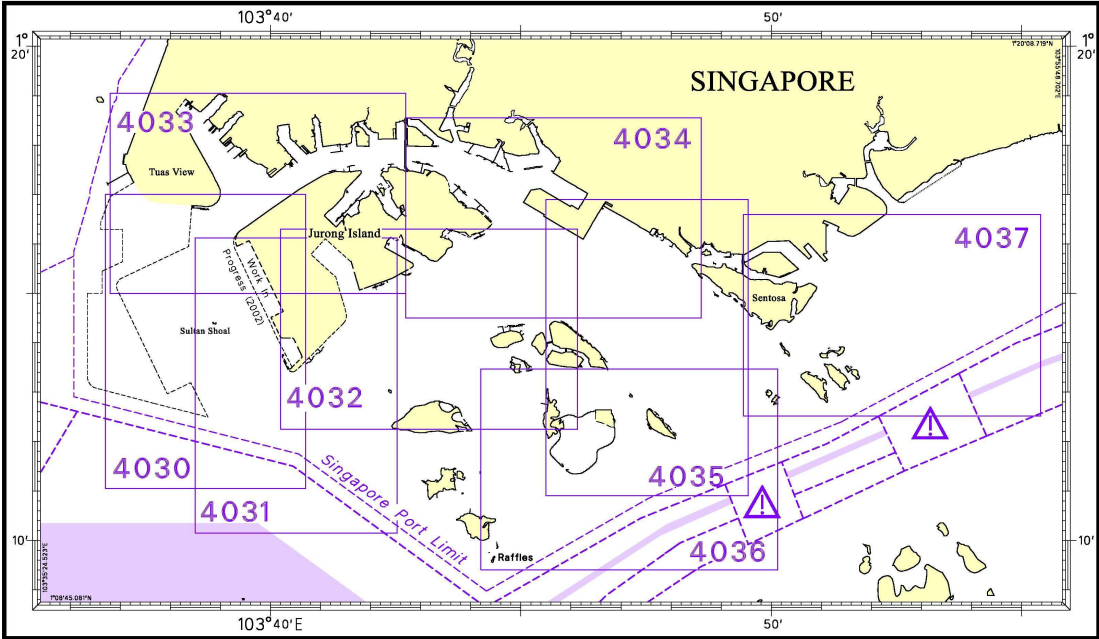
## INDEX OF CHARTS AND PUBLICATIONS

NOTICES	DESCRIPTION	PAGE	NOTICES	DESCRIPTION	PAGE
	INDEX OF SINGAPOREAN CHARTS	70			
	INDEX OF DUAL BADGED CHARTS	71			
	New Edition SINGAPOREAN CHART	72			
	New Edition DUAL BADGED CHARTS	73			
*30	SP1/GSP1 502	74 75			
*31	SP1/GSP1 502	74 75			
*32	SP1/GSP1	74			
*33	SP1/GSP1	74			
*34	SP1/GSP1 502	74 75			
35	202	74			
*36	503	75			
*37	Port Marine Notices	77			
*38	Updating of Publication "SINGAPORE PORT INFORMATION 2006/2007 EDITION"	78			

I  
**INDEX OF CHARTS AND PUBLICATIONS**  
INDEX OF SINGAPOREAN CHARTS



I  
**INDEX OF CHARTS AND PUBLICATIONS**  
INDEX OF DUAL BADGED CHARTS



## II NEW PUBLICATIONS

### NEW EDITION SINGAPOREAN CHART PUBLISHED ON 31 JANUARY 2007

**Chart No.** : CHARTS FOR SMALL CRAFT  
**Title** : Singapore Strait and Adjacent Waterways – 2007 Edition  
**Date Published** : 31 January 2007  
**Remarks** : The publication contains 19 Small Craft Charts and related nautical information bound into an atlas measuring 600 X 400 mm. The pages are laminated to prevent damage from seawater.  
 The symbols, abbreviations and terms depicted on these charts are consistent with the International Hydrographic Organization Chart Standards and Specifications.  
 Symbols for the locations of pleasure craft facilities and areas for sea sport activities such as board sailing, dinghy sailing, keelboat sailing, power-boating and water-skiing are also included and highlighted in red.  
 Chart of the same publication 2005 Edition published on 28 January 2005 is superseded.

**Price (Excluding GST)** : S\$91.00

**Charts are available from** : Motion Smith  
 76 Shenton Way #01-01  
 Singapore 079119  
 Tel : (65) 6220 5098  
 (After office hours, Pager No.9304 4156,  
 9304 4159)  
 Fax : (65) 6225 4902  
 Email : sales@motsmith.com  
 Internet Website : <http://www.motsmith.com>

---

## II NEW PUBLICATIONS

### NEW EDITION DUAL BADGED CHART PUBLISHED ON 29 MARCH 2007

**Chart No** : 4039  
**Title** : Western Approaches to Main Strait  
**Coverage** : Lat 1° 01.50' N 1° 13.70' N  
 Long 103° 31.20' E 103° 49.00' E  
**Scale** : 1 : 30 000  
**Date Published** : 29 March 2007  
**Size of chart** : 1100.7 x 749.5mm  
**Remarks** : The new edition includes new surveys covering Approaches to Temasek and Sinki Fairways, Raffles Shoal and new jetties of Pulau Sebarok. The existing chart of the same number published on 1 December 2005 is superseded.

**Charts are available from** : Motion Smith  
 76 Shenton Way #01-01  
 Singapore 079119  
 Tel : (65) 6220 5098  
 (After office hours, Pager No.9304 4156,  
 9304 4159)  
 Fax : (65) 6225 4902  
 Email : sales@motsmith.com  
 Internet Website : <http://www.motsmith.com>

---






### NEW EDITION DUAL BADGED CHART PUBLISHED ON 22 FEBRUARY 2007





**Chart No.** : 4044  
**Title** : Johor Strait, Eastern Part  
**Coverage** : Lat 1° 19.00' N 1° 31.20' N  
 Long 103° 45.60' E 104° 03.40' E  
**Scale** : 1:30 000  
**Date Published** : 22 February 2007  
**Size of chart** : 1100.5 x 744.5 mm  
**Remarks** : This new edition includes updates in topographic details such as Sembawang Dock, Pulau Serangoon , Loyang Regional Base, Changi Creek and Changi Point Ferry Terminal. The existing chart of the same number published on 26 September 2002 is superseded.

**Charts are available from** : Motion Smith  
 76 Shenton Way #01-01  
 Singapore 079119  
 Tel : (65) 6220 5098  
 (After office hours, Pager No.9304 4156,  
 9304 4159)  
 Fax : (65) 6225 4902  
 Email : sales@motsmith.com  
 Internet Website : <http://www.motsmith.com>

---

## II NOTICES TO MARINERS AND CHART CORRECTIONS

<b>SP1/GSP1</b>	1Ed 03/01/07 Last NM 22/2007	(HD/HY Code A00100407)	<b>*NM 30/2007</b>
<b>Delete</b>	 Wk (Previous Notice 11/88/2004 is superseded)		1°16.98'N 103°57.84'E
<b>Delete</b>		(HD/HE025/025/2007)	<b>*NM 31/2007</b>
	 FI(2)10s (Previous Notice 01/04/2005 is superseded)		1°16.94'N 103°57.83'E
		(HD/HY Code A00100507)	<b>*NM 32/2007</b>
<b>Delete</b>	 Wk (Previous Notice 07/81/2006 is superseded)		1°13.95'N 103°51.15'E
		(HD/HE025/035/2007)	<b>*NM 33/2007</b>
<b>Delete</b>	 FI(2)10s, KM Ja (Previous Notice 11/140/2006 is superseded)		1°13.96'N 103°51.14'E
		(HD/HY Code N00100307)	<b>*NM 34/2007</b>
<b>Delete</b>	 Wk (Previous Notice 05/46/2006 is superseded)		1°17.08'N 104°01.22'E

<b>202</b>	5Ed 19/10/06 Last NM 27/2007	(Admiralty Notices 9/991/2007)	<b>NM 35/2007</b>
<b>Insert</b>	 <b>FI.G.5s6M</b>		0°59.60'N 104°11.10'E 0°54.50'N 104°21.30'E
	 <b>FI.R.6s6M</b>	(a)	0°56.20'N 104°21.20'E 0°57.50'N 104°15.20'E
	 <b>FI.R.4s6M</b>		0°58.70'N 104°09.30'E
<b>Delete</b>	 , close N of:	(a)	above

**II**  
**NOTICES TO MARINERS AND CHART CORRECTIONS**

**502**                    3Ed 25/10/05 Last NM 22/2007                    (HD/HY Code A00100407)                    **\*NM 30/2007**

**Delete**

Wk  
(Previous Notice 11/88/2004 is superseded)

1°16.98'N    103°57.84'E

**Insert**

depth **36**

1°16.98'N    103°57.83'E

(HD/HE025/025/2007)

**\*NM 31/2007****Delete**

Fl(2)10s  
(Previous Notice 01/04/2005 is superseded)

1°16.94'N    103°57.89'E

(HD/HY Code N00100307)

**\*NM 34/2007****Delete**

Wk  
(Previous Notice 05/46/2006 is superseded)

1°17.08'N    104°01.22'E

**503**                    2Ed 15/09/04 Last NM 119/2006                    (HD/HY Code L00900207)                    **\*NM 36/2007**

**Delete**

Submarine cable, ~~~~ , joining:

1°25.77'N    104°26.02'E  
1°25.68'N    104°25.92'E

**Insert**

Submarine cable, ~~~~ , joining:

1°25.77'N    104°26.02'E  
1°25.77'N    104°25.93'E  
1°25.68'N    104°25.92'E

**II**  
**TEMPORARY AND PRELIMINARY NOTICES**

Nil

**III**  
**NAVIGATIONAL INFORMATION**

**\*(NM 37/2007) PORT MARINE NOTICES**

These notices can be accessed directly from MPA website:  
[http://www.mpa.gov.sg/circulars\\_and\\_notices/portmarine\\_notices/pm\\_notices.htm](http://www.mpa.gov.sg/circulars_and_notices/portmarine_notices/pm_notices.htm)

<b>PMN No.</b>	<b>Subject</b>
22/2007	Dredging works at Sakra Basin, Jurong Island
23/2007	Reclamation at Pulau Ular (Revision)
24/2007	Development of Chek Jawa Wetlands at Pulau Ubin
27/2007	Re-construction of Revetment at Tanjong Berlayar
28/2007	Installation of Cofferdams and dredging works off Pasir Panjang
31/2007	Pipeline installation from Pasir Panjang to Pulau Bukom
34/2007	Reclamation of Tuas View Extension: Stages 1, 2, 3 & 4

---

### III AMENDMENTS TO PUBLICATIONS

**\*(NM 38/2007) UPDATING OF PUBLICATION "SINGAPORE PORT INFORMATION 2006/2007 EDITION"**

1 Page 147 - Item 7

PASIR PANJANG TERMINAL (PSA Corporation Ltd) (1°17.2'N, 103°46.1'E)

Insert the following:

Berth	Length of Berth	Depth Alongside (Year Surveyed)	Controlling Depth In Approaches
<b>P09</b>	<b>326m</b>	<b>15.0m (2007)</b>	<b>14.6m</b>

Source: HD/HY Code C00102007

2 Page 158 - Item 37

PULAU SEBAROK (VOPAK TERMINALS SINGAPORE PTE LTD) (1°12.3'N, 103°47.8'E)

Amend the following:

Berth	Depth Alongside (Year Surveyed)	
	Delete	<b><i>Insert</i></b>
No. 8	16.8m (2006)	<b>17.0m (2006)</b>

Source: HD/HY Codes F00114406

**IV**  
**REPRINT OF RADIO NAVIGATIONAL WARNINGS**

Nil



**V**  
**REPRINT OF ADMIRALTY NOTICES TO MARINERS**  
**FOR DUAL BADGED CHARTS**

**969\* SINGAPORE – Singapore Island- Changi – CAFHI Jetty Northwards and Changi Pt Eastwards – Mooring buoy. Buoy.**

Source: Maritime and Port Authority of Singapore

Note: This update has been included in a New Edition of Chart 4044 published 22 February 2007.

**Chart 4043** [previous update 652/07] WGS84 DATUM

Insert	 <b>AL1</b>	1° 23'.98N., 103° 58'.14E.
Substitute	 Fl.Y.6s CAAS1 for  Fl.Y.6s	1° 23'.54N., 103° 59'.94E.

**986\* MALAYSIA – Peninsular Malaysia, West Coast – Johor Strait Western Part – Pelabuhan Tanjung Pelepas Southwards – Tanjung Bin South – eastwards – Buoy.**

Source: Malaysian Notice 3/07

**Chart 4038 (plan B, Pelabuhan, Tanjung Pelepas)** [previous update 654/07] WGS84 DATUM

Insert	 Q(3)10s	1° 19'.749N., 103° 33'.050E.
--------	---	------------------------------

**Chart 4038** [previous update 654/07] WGS84 DATUM

Insert	 Q(3)10s	1° 19'.75N., 103° 33'.05E.
--------	---	----------------------------

**1274\* SINGAPORE — Pulau Sebarok — Pasir Panjang Terminal — Jetties. Berths. Dredged depths. Piles. Wreck. Lights in line. Obstruction. Depths.**

Light List Vol. F, 2006/07, 1695.1, 1695.2

Source: Maritime and Port Authority of Singapore

Note: This amendment will be included in New Edition of Chart 4039 to be published 29 March 2007.

**Chart 4034** [previous update 662/07] WGS84 DATUM

Insert	limit of dredged area, pecked line, joining:	1° 16' .476N. , 103° 46' .468E. (shore) 1° 16' .459N. , 103° 46' .496E. (existing limit)
Move	dredged depth, 16.0m (2007), centred on: berth number, P25, from: to:	1° 16' .444N. , 103° 46' .469E. 1° 16' .534N. , 103° 46' .482E. 1° 16' .491N. , 103° 46' .453E.

**Chart 4035** [previous update 662/07] WGS84 DATUM

Insert	the accompanying block, showing new jetties, berths, dredged depths, piles and wreck, and amendments to lights in line, centred on: limit of dredged area, pecked line, joining:	1° 12' .340N. , 103° 48' .140E. 1° 16' .476N. , 103° 46' .468E. (shore) 1° 16' .459N. , 103° 46' .496E. (existing limit)
	dredged depth, 16.0m (2007), centred on:	1° 16' .444N. , 103° 46' .469E.
Move	berth number, P25, from: to:	1° 16' .534N. , 103° 46' .482E. 1° 16' .491N. , 103° 46' .453E.

**V**  
**REPRINT OF ADMIRALTY NOTICES TO MARINERS**  
**FOR DUAL BADGED CHARTS**

Delete leading line, pecked line, extending for 540m in direction  
 220°, from: (a) 1° 11' .91N. , 103° 47' .73E.  
 legend, 040.1°, seaward end of: (south limit of block amendment)  
 (a) above

**Chart 4036** [previous update 841/07] WGS84 DATUM

Insert the accompanying block, showing new jetties, berths,  
 dredged depths, piles and wreck, and amendments to lights  
 in line, centred on: 1° 12' .340N. , 103° 48' .130E.

Delete leading line, pecked line, extending for 540m in direction  
 220°, from: (a) 1° 11' .91N. , 103° 47' .73E.  
 legend, 040.1°, seaward end of: (south limit of block amendment)  
 (a) above

**Chart 4040** [previous update 798/07] WGS84 DATUM

Insert the accompanying block, showing new jetties, piles, wreck  
 and depths, and amendments to lights in line, centred on: 1° 12' .00N. , 103° 48' .00E.

**Chart 4041** [previous update 658/07] WGS84 DATUM

Insert the accompanying block, showing new jetties, piles, wreck  
 and depths, and amendments to lights in line, centred on: 1° 12' .00N. , 103° 48' .00E.

**1275\* SINGAPORE — Singapore Island — West Jurong Channel — JTC Marine Base South-eastwards — Berth.**

Source: UK Hydrographic Office

Note: **Certain copies only.****Chart 4033** [previous update 659/07] WGS84 DATUM

Insert berth number YFQ5, centred on: 1° 17' .992N. , 103° 41' .201E.

Delete berth number YFQ5, centred on: 1° 17' .922N. , 103° 41' .201E.

**1277\* SINGAPORE STRAIT – Western Approaches – Nipa Transit Anchorage – Buoyage.**

Source: DGST Indonesia

Note: This update will be included in a New Edition of Chart 4039 to be published 29 March 2007.

**Chart 4040** [previous update 1274/07] WGS84 DATUM

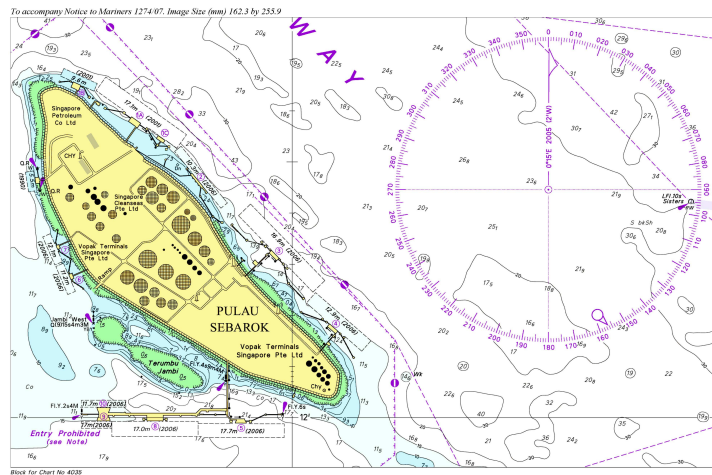
Insert  Fl(4)Y.10s 1° 09' .40N. , 103° 36' .60E.

Delete former  Fl(4)Y.10s 1° 09' .50N. , 103° 35' .60E.

**V**  
**REPRINT OF ADMIRALTY NOTICES TO MARINERS**  
**FOR DUAL BADGED CHARTS**

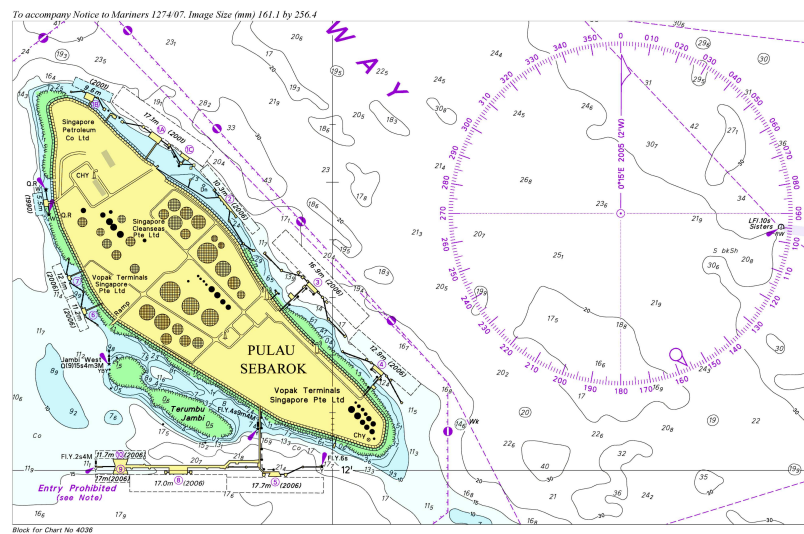
Note: 1274/07\* - Chart 4035 – accompanying block

This block correction is for illustration only. The actual block correction should be obtained from the Admiralty Notices to Mariners.



Note: 1274/07\* - Chart 4036 – accompanying block

This block correction is for illustration only. The actual block correction should be obtained from the Admiralty Notices to Mariners.

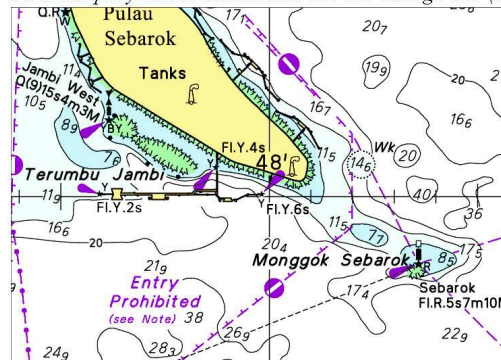


**V**  
**REPRINT OF ADMIRALTY NOTICES TO MARINERS**  
**FOR DUAL BADGED CHARTS**

Note: 1274/07\* - Chart 4040 – accompanying block

This block correction is for illustration only. The actual block correction should be obtained from the Admiralty Notices to Mariners.

*To accompany Notice to Mariners 1274/07. Image Size (mm) 52.7 by 74.6*

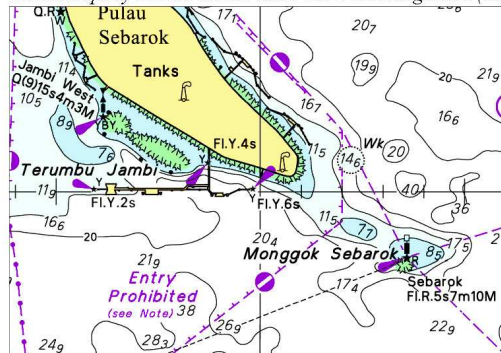


Block for Chart No 4040

Note: 1274/07\* - Chart 4041 – accompanying block

This block correction is for illustration only. The actual block correction should be obtained from the Admiralty Notices to Mariners.

*To accompany Notice to Mariners 1274/07. Image Size (mm) 52.7 by 74.6*



Block for Chart No 4041

Updated to Admiralty Notices to Mariners Edition No. 12 of 2007 dated 22 March 2007

---

**SINGAPORE ELECTRONIC NAVIGATIONAL CHARTS (ENC) DISTRIBUTORS**  
Please approach any of the appointed distributors to purchase the Singapore ENC.

<b>PERSON TO CONTACT</b>	<b>ADDRESS</b>	<b>TELEPHONE/FAX NO./EMAIL/WEBSITE</b>
Mr Chong Chee Meng General Manager	DPM (Singapore) Pte Ltd 1 Maritime Square, #09-72 Harbour Front Centre, Singapore 099253	Tel. No.: +65 6270 4060 Fax No.: +65 6276 3858 Email: <a href="mailto:sales@dpmsingapore.com.sg">sales@dpmsingapore.com.sg</a> Website: <a href="http://www.dpmsingapore.com.sg">http://www.dpmsingapore.com.sg</a>
Ms Shirley Koh	Kelvin Hughes (S) Pte Ltd 8 Pandan Avenue #02-00, Singapore 609384	Tel. No.: +65 6545 9880 ext.12 Fax No.: +65 6545 8892 Email: <a href="mailto:shirley.koh@khsing.com">shirley.koh@khsing.com</a> Website: <a href="http://www.kelvinhughes.co.uk">http://www.kelvinhughes.co.uk</a>
Mr Philip Loh Sales Manager	Motion Smith 76 Shenton Way #01-01, Singapore 079119	Tel. No.: +65 6220 5098 Fax No.: +65 6225 4902 Email: <a href="mailto:sales@motsmith.com">sales@motsmith.com</a> Website: <a href="http://www.motsmith.com">http://www.motsmith.com</a>
Mr Choy Kum Weng Director	Vector Services Pte Ltd 2 Maritime Square #04-12B SPI Building, Singapore 099255	Tel. No.: +65 6278 7212 Fax No.: +65 6278 7212 Email: <a href="mailto:kwchoy@pacific.net.sg">kwchoy@pacific.net.sg</a>
Mr Looi Keen Wai Regional Sales Manager	Transas Marine Pacific Pte Ltd 750C Chai Chee Road, Technopark@Chai Chee, #04-07 Singapore 469003	Tel. No.: +65 6443 3061 Fax No.: +65 6443 3025 Email: <a href="mailto:looi@transas.com.sg">looi@transas.com.sg</a> Website: <a href="http://www.transas.com.sg">www.transas.com.sg</a>
Mr George Arts President	Marine Press of Canada 640 Rue St-Paul Ouest, Suite 300 Montreal (QC) Canada, H3C1L9	Tel. No.: (514) 866-8342 Fax No.: (514) 866-9050 Email: <a href="mailto:sales@marinepress.com">sales@marinepress.com</a> Website: <a href="http://www.marinepress.com">www.marinepress.com</a>
Mr Thomas Wilde Superintendent	HanseNautic GmbH Bade & Hornig, Eckardt & Messtorff Herrengaben 31 D-20459 Hamburg, Germany	Tel. No.: +49 40 374 811-32 Fax No.: +49 40 366 400 Email: <a href="mailto:info@HanseNautic.com">info@HanseNautic.com</a> Website: <a href="http://www.HanseNautic.com">http://www.HanseNautic.com</a>
Ms Verena Borsos Manager	SevenCs AG + Co. KG Ruhrstrasse 90, D-22761 Hamburg, Germany	Tel. No.: +49 40 853 58 6940 Fax No.: +49 40 853 58 6949 Email: <a href="mailto:sales@chartworld.com">sales@chartworld.com</a> Website: <a href="http://www.sevencs.com">http://www.sevencs.com</a>
Mr K. Shimizu ENC Manager	Japan Hydrographic Association ENC Service Division 5-3-3 Tsukiji, Chuo-ku Tokyo 104-0045, Japan	Tel. No.: +81 3 3543 0752 Fax No.: +81 3 3543 0695 Email: <a href="mailto:enc-support@jha.jp">enc-support@jha.jp</a> Website: <a href="http://www.jha.jp.com">http://www.jha.jp.com</a>
Mr Jester-Kim Foreign Business Department Manager	E_MLX Co. Ltd Ssangyong Research No.2 Lab Sinseong-Dong 100 Yusong-Gu, Daejoen 305-804, Korea (ROK)	Tel. No.: +82 42 865 1893 Fax No.: +82 42 865 1884 Email: <a href="mailto:Jester-kim@emlx.co.kr">Jester-kim@emlx.co.kr</a>
Mr C G Kim	Korean Ocean Development Co. Ltd 2ND Fl, Dongbang Bldg, 25-4, 4 Ga Jungang-Dong, Jung-Gu, Busan, South Korea	Tel. No.: +82 514 66 0760 Fax No.: +82 514 65 9345 Email: <a href="mailto:sales@chartkorea.com">sales@chartkorea.com</a> Website: <a href="http://chartkorea.com">http://chartkorea.com</a>
Mr Kjell Nodland	C-Map Norway A/S P.O Box 212, N-4371 Egersund, Norway	Tel No.: +47 514 64 700 Fax No: +47 514 64 701 Email: <a href="mailto:market@c-map.no">market@c-map.no</a> Website: <a href="http://www.c-map.no">http://www.c-map.no</a>

Ms Marianne Barstad	PRIMAR STAVANGER Lervigsveien 36, P.O Box 60, N-4001 Stavanger, Norway	Tel. No.: +47 51 93 9500 Fax No.: +47 51 93 9501 Email: <a href="mailto:sales@primar.org">sales@primar.org</a> Website: <a href="http://www.primar-stavanger.org">http://www.primar-stavanger.org</a>
Mr Roar Moe International Marketing Coordinator	Maritime Information System AS (MARIS) Danholmen 25, No.3115 Tonsberg, Norway	Tel. No.: +47 33 30 42 50 Fax No.: +47 33 30 42 51 Email: <a href="mailto:roar.moe@maris.no">roar.moe@maris.no</a> Website: <a href="http://www.maris.no">http://www.maris.no</a>
Mr Andy Criddle Regional Sales Manager	United Kingdom Hydrographic Office Admiralty Way, Taunton, Somerset TA1 2DN United Kingdom	Tel. No.: +44 (0)1823 337900 Fax No.: +44 (0)1823 284077 Email: <a href="mailto:vargroup@ukho.gov.uk">vargroup@ukho.gov.uk</a> & <a href="mailto:andrew.criddle@ukho.gov.uk">andrew.criddle@ukho.gov.uk</a> Website: <a href="http://www.ukho.gov.uk">www.ukho.gov.uk</a>

---

#### CHART AGENTS FOR MARITIME AND PORT AUTHORITY OF SINGAPORE (MPA) PUBLICATIONS

**Agent's name** : MOTION SMITH  
**Address** : 76 Shenton Way # 01-01  
Singapore 079119  
**Telephone** : (65) 6220 5098  
: (After Office hours: Pager No. 9304 4156, 9304 4159)  
**Fax No.** : (65) 6225 4902  
**E-mail** : [sales@motsmith.com](mailto:sales@motsmith.com)  
**Website** : <http://www.motsmith.com>

**Agent's name** : HONG YUNN SEA PROFESSIONAL CO., LTD  
**Address** : 198 Ta Tong 1<sup>st</sup> Road, Kaohsiung 800,  
Taiwan  
**Telephone** : 886-7-2217367  
**Fax No.** : 886-7-2818180  
**E-mail** : [kimchang@hongyunn.com.tw](mailto:kimchang@hongyunn.com.tw)  
**Website** : <http://www.hongyunn.com.tw>

---

## HYDROGRAPHIC NOTE - Instructions

1. Mariners are requested to notify the Chief Hydrographer, Maritime and Port Authority of Singapore, when new or suspected dangers to navigation are discovered, changes are observed in aids to navigation or where corrections to nautical publications may be necessary. Reports, which cannot be confirmed or are lacking in certain details should not be withheld.
2. Any ambiguities of time, positioning and depth should be stressed and any firm expectation of being able to check the information provided on a following voyage should be mentioned.
3. Mariners using satellite position fixing systems, eg. GPS, should provide details of equipment and datum used (where applicable). Where bearings (true or magnetic) are taken visually or by radar to fix a position, it should include more than two objects in order to provide a check on its accuracy. A position may also be defined by bearing and distance from a conspicuous object eg. beacon, lighthouse etc.
4. The note should include a tracing or a digital image of the chart used and the details should be clearly marked.
5. Echo sounders frequently register greater depths than the advertised maximum depth for the equipment, eg. a trace appearing at 50 metres may be in fact be 550 metres or even 1050 metres for equipment whose maximum depth is 500 metres. Erroneous depths caused by 2nd transmission error can usually be recognised by the following:
  - (a) the tracing being weaker than normal for the depth registered,
  - (b) the trace appearing to pass through the transmission line,
  - (c) the feathery nature of the trace.
6. An acknowledgement of receipt will be sent. When a Notice to Mariners is issued, the sender's vessel or name is quoted as the source unless the same information is also received in foreign Notices to Mariners.
7. Reports of shoals, uncharted dangers and defects in aids to navigation may also be made to the appropriate Singapore Port Operations Control Station on VHF Channels 10, 12, 14, 68 or 73.

## HYDROGRAPHIC NOTE

To:

Chief Hydrographer  
Hydrographic Department  
Maritime and Port Authority of Singapore  
460 Alexandra Road #20-00 PSA Building  
Singapore 119963

Tel : (65) 6375 1227  
Fax : (65) 6278 7646  
Email : [hydrographic@mpa.gov.sg](mailto:hydrographic@mpa.gov.sg)

**Sender's Contact Details** :

Date : .....

Name of Vessel : .....

Address of Sender : .....

Tel : ..... Fax : .....

Email : .....

**Nature of Observation** :

General Location : .....

Subject : .....

Position : Lat. .... Long. ....

Charts Used : .....

Date & Time of Observation : .....

Details : .....

.....

.....

Attachment : .....

**Equipment Used** :

Type of Position Fixing : ..... GPS / DGPS ..... Others : .....

Type of Echo Sounder : .....

Name and Signature : .....

Ship's/Company's stamp : .....