



SINGAPOREAN NOTICES TO MARINERS

SECTION	CONTENT	Page
I	Index of Charts & Publications	75
II	New Publications	78
	Notices to Mariners and Chart Corrections	79
	Temporary and Preliminary Notices	81
III	Navigational Information	82
	Amendments to Publications	85
IV	Reprint of Radio Navigational Warnings	87
V	Reprint of Admiralty Notices to Mariners for Dual Badged Charts	88

The monthly Notices to Mariners contain corrective information affecting charts published by the Hydrographic Department, Maritime and Port Authority of Singapore. The information contained in these Notices should be updated on the charts affected. Notices under Section II apply only to the particular Singaporean Chart(s) indicated.

Mariners are requested to notify the Chief Hydrographer, Maritime and Port Authority of Singapore, immediately on the discovery of new dangers or suspected dangers to navigation and of changes or defects in aids to navigation. See Hydrographic Note on back page.

The monthly Singaporean Notices to Mariners can be accessed directly from the MPA website:

<http://www.mpa.gov.sg/> > Circulars & Notices > Singaporean NTM

or

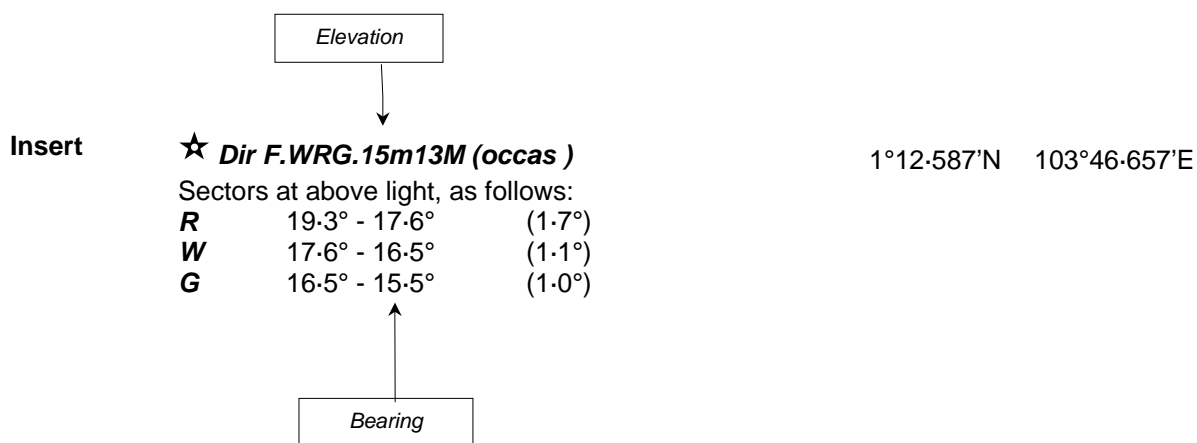
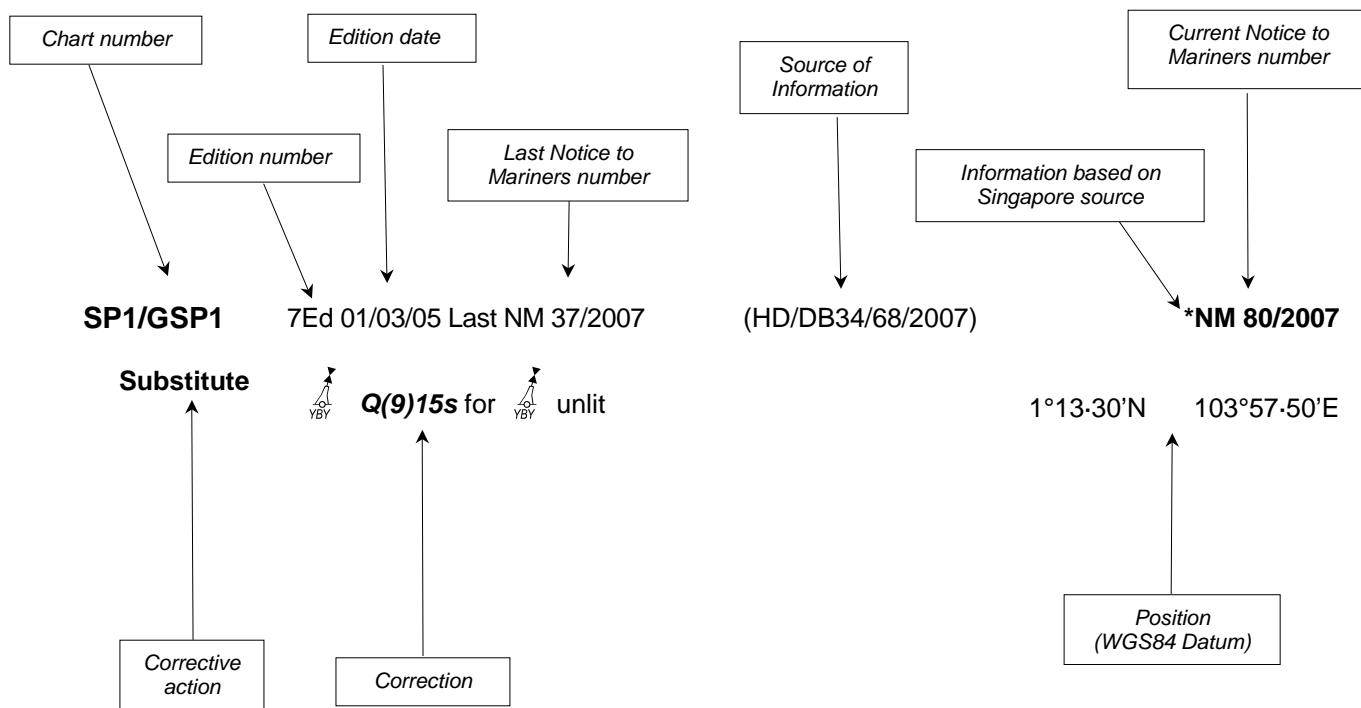
<http://www.mpa.gov.sg/infocentre/publications/noticesmari.htm>

This service is offered free of charge.

Hydrographic Department
Maritime and Port Authority of Singapore
460 Alexandra Road
PSA Building #20-00
Singapore 119963
Tel: (65) 6375 1227
Fax: (65) 6278 7646

EXPLANATION OF FORMAT

The elements of a typical chart correction are explained below.



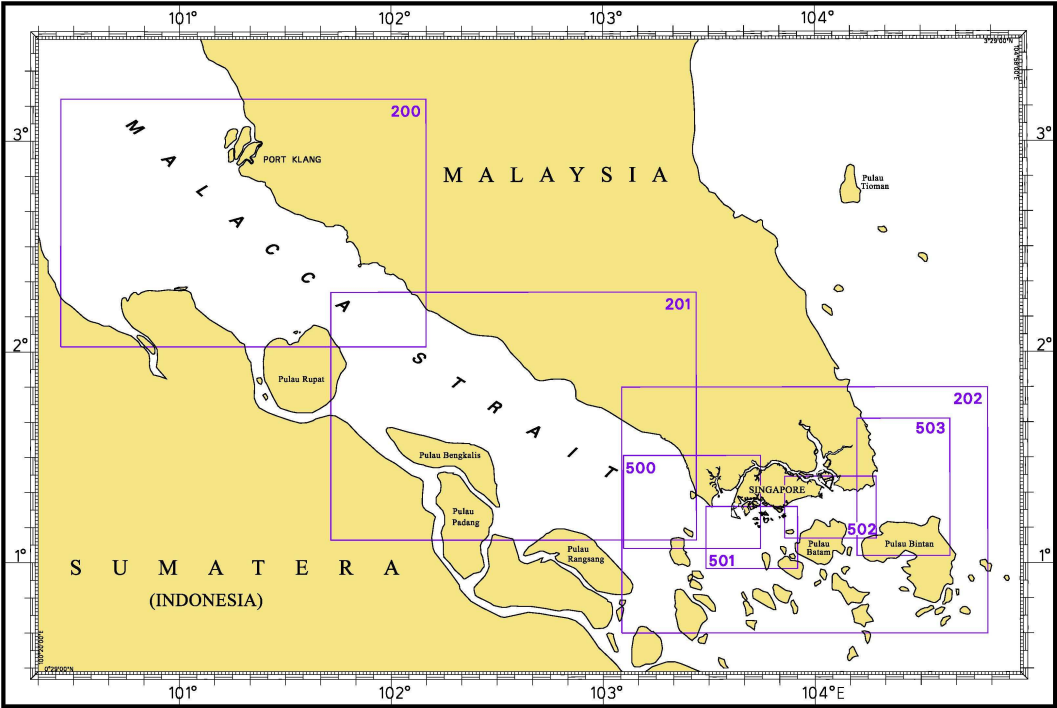
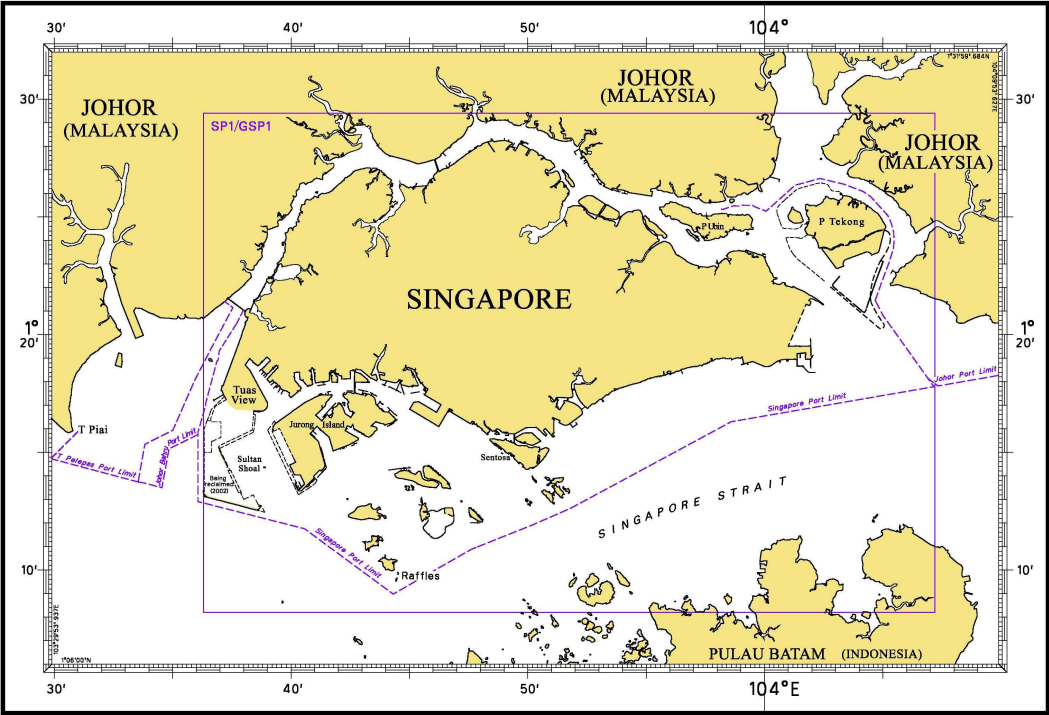
Notes:

- a) Notice to Mariners number followed by:
 - T** indicates a Temporary Notice (eg. *NM 80T/2007).
 - P** indicates a Preliminary Notice (eg. *NM 80P/2007).
- b) Bearings are referred to True Compass in degrees clockwise from 000° to 359°. Bearings related to lights are from seaward.
- c) Heights and elevations are above Mean High Water Springs.

INDEX OF CHARTS AND PUBLICATIONS

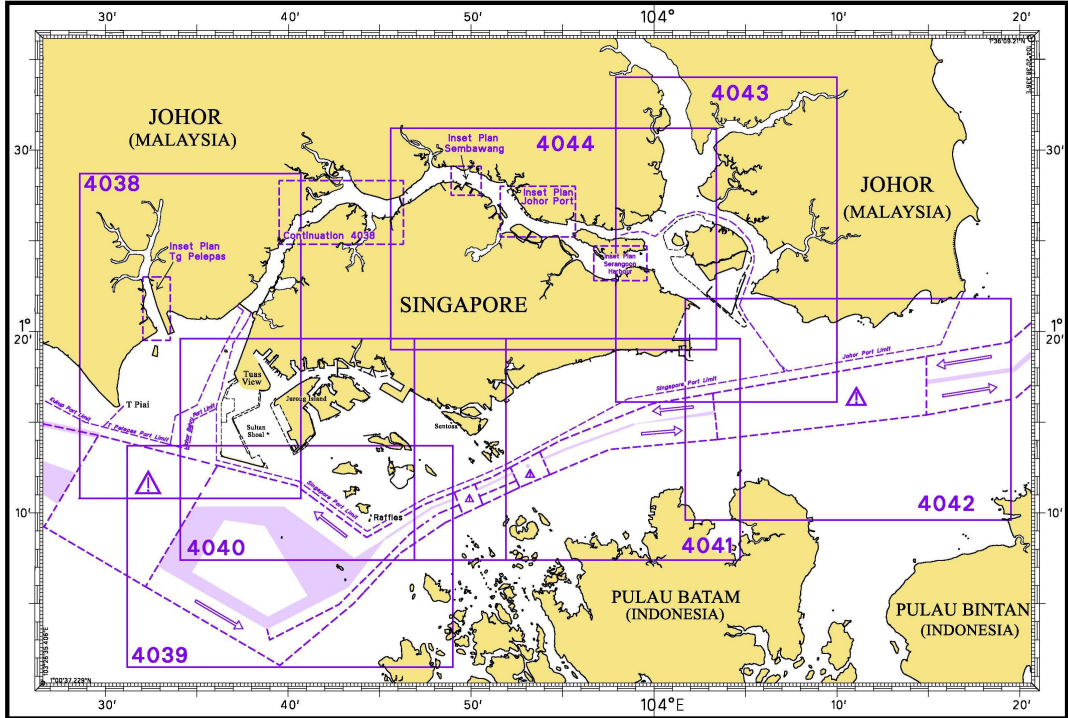
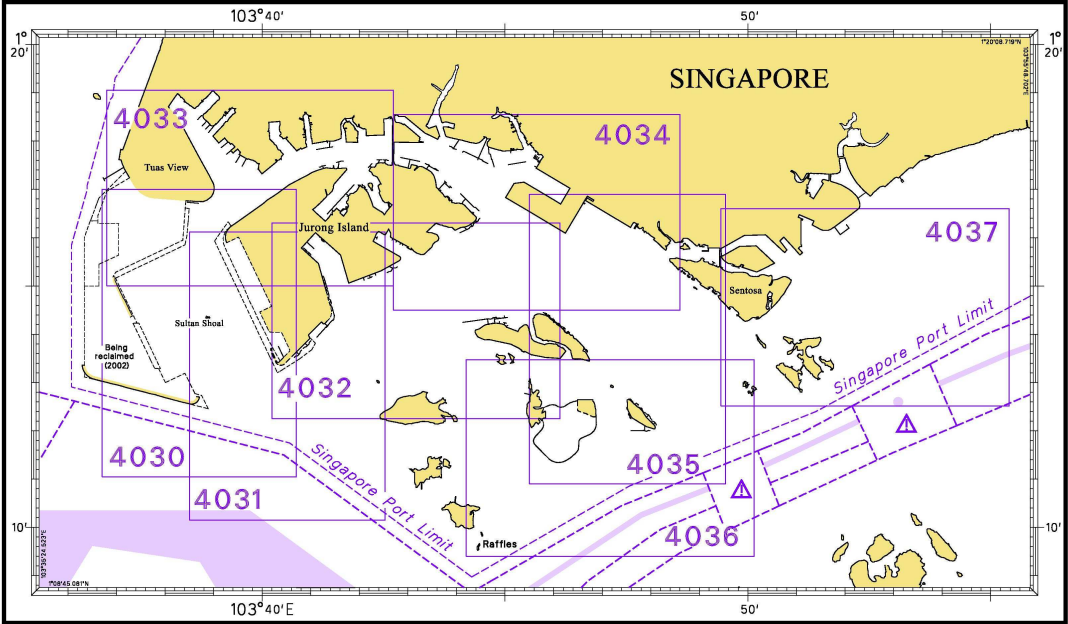
NOTICES	DESCRIPTION	PAGE	NOTICES	DESCRIPTION	PAGE
	Index of Singaporean Charts	76	*69	Updating of Publication "SINGAPORE PORT INFORMATION 2008/2009 EDITION"	85
	Index of Dual Badged Charts	77			
	New Publication "SINGAPORE PORT INFORMATION - EDITION 2008/2009"	78		Singapore Electronic Navigational Charts (ENC) Distributors	99
*55	SP1/GSP1	79			
*56	SP1/GSP1	79			
*57	SP1/GSP1	79			
*58	SP1/GSP1	79			
	202	80			
	502	80			
*59	SP1/GSP1	79			
*60	SP1/GSP1	79			
*61	SP1/GSP1	79			
*62	SP1/GSP1	79			
*63	SP1/GSP1	79			
64	202	80			
	500	80			
*65	501	80			
*66	Port Marine Notices	82			
*67P	Dredging from the Singapore Port Limit and the West Bound Lane of the TSS in the Singapore Strait	82			
*68	Singaporean Print On Demand (POD) Charts	84			

I
INDEX OF CHARTS AND PUBLICATIONS
INDEX OF SINGAPOREAN CHARTS

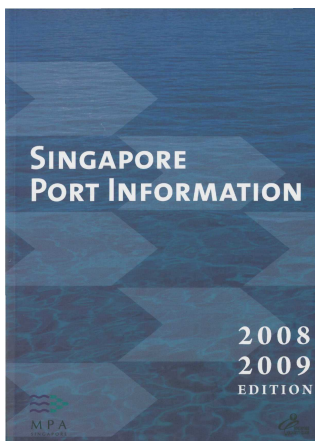


Notes:
Updated SINGAPOREAN Charts (excluding Charts SP1/GSP1 and 503) are available through our Print On Demand (POD)(Chart Service). For more information, refer to Section III – Navigational Information and these charts can be purchased from our authorised Chart Agents:
DPM (Singapore) Pte Ltd, E.W. Liner Charts & Publications Pte Ltd and Motion Smith.

I
INDEX OF CHARTS AND PUBLICATIONS
INDEX OF DUAL BADGED CHARTS



II NEW PUBLICATIONS



NEW EDITION SINGAPORE PORT INFORMATION EDITION 2008/2009 PUBLISHED ON JANUARY 2008.

Summary of Publication

The publication contains quality colour chartlets, showing important maritime information in the Singapore Port Waters as well as the Malacca and Singapore Straits. The publication is a compendium of essential maritime information including operational information and regulations such as: -

- Guide to VHF Communication
- Pilotage Guidelines and Procedures
- Port Clearances and Reporting
- Port facilities and guides to major port entry
- IMO adopted separation schemes, the routing system in the Straits of Malacca and Singapore

In addition, this publication also provides the following: -

- Characteristics of all the aids to navigation along the Singapore Strait and Singapore Port Waters.
- Catalogue of Nautical Charts

A comprehensive reference in graphical and textual form for all Singaporean and Dual Badged Charts. This catalogue gives full details for each chart and its publication date. Details of chart agents and appointed Singapore Electronic Charts (ENC) distributors are also included.

To Whom Will It Be Useful?

Mariners, shipping community, port users and other interested users.

Frequency / Year of Publication

Once every 2 years.

Cost of Publication


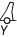


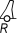




To be advised by Chart Agents.

Order Enquiries:

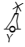

This publication would be available from the following Chart Agents:

- 1) DPM (Singapore) Pte Ltd
 - 2) E.W. Liner Charts & Publications Pte Ltd
 - 3) Motion Smith
- (Please refer to Page 100 for details.)
-

II
NOTICES TO MARINERS AND CHART CORRECTIONS

SP1/GSP1	3Ed 31/01/08 Last NM 45/2008	(HD/HE025/027/2008)		*NM 55/2008
Insert	 FI.Y.10s TSS 5		1°15-63'N 103°45-41'E	
		(HD/HE025/028/2008)		*NM 56/2008
Insert	 FI(2)Y.8s TSS 6		1°13-14'N 103°50-72'E	
		(HD/HE025/029/2008)		*NM 57/2008
Insert	 FI.Y.4s ADCP 3		1°14-32'N 103°46-28'E	
		(HD/DB67/013/2008)		*NM 58/2008
Delete	 FI.Y.4s.5M Sekupang		1°09-10'N 103°55-70'E	
		(HD/HE025/045/2008)		*NM 59/2008
Insert	 FI.R.2s UF1		1°13-98'N 103°44-13'E	
		(HD/HE025/046/2008)		*NM 60/2008
Insert	 FI.G.4s UF2		1°13-90'N 103°44-11'E	
		(HD/HE025/047/2008)		*NM 61/2008
Insert	 FI.G.8s UF3		1°13-82'N 103°44-37'E	
		(HD/HE025/048/2008)		*NM 62/2008
Insert	 FI.R.4s UF4		1°13-85'N 103°44-56'E	
		(HD/HE025/049/2008)		*NM 63/2008
Insert	 FI.G.6s UF5		1°13-73'N 103°44-79'E	

II
NOTICES TO MARINERS AND CHART CORRECTIONS

202	5Ed 19/10/06 Last NM 49/2008	(HD/DB67/013/2008)	*NM 58/2008
Delete	 Fl.Y.4s.5M Sekupang		1°09.10'N 103°55.70'E
		(Marine Dept. Peninsular Malaysia NTM 01/2007)	NM 64/2008
Substitute	Dir Iso.WRG.10s6M for Iso.10s19m6M		1°19.97'N 103°33.77'E
<hr/>			
500	5Ed 30/08/07 Last NM 50/2008	(Marine Dept. Peninsular Malaysia NTM 01/2007)	NM 64/2008
Substitute	Dir Iso.WRG.10s18m6M for Iso.10s19m6M		1°19.97'N 103°33.77'E
<hr/>			
501	4Ed 21/09/06 Last NM 50/2008	(HD/HY Code 163C/2007)	*NM 65/2008
Insert	bridge, single firm line, joining:		1°15.81'N 103°48.78'E 1°15.87'N 103°48.90'E
<hr/>			
502	3Ed 25/10/05 Last NM 52/2008	(HD/DB67/013/2008)	*NM 58/2008
Delete	 Fl.Y.4s.5M Sekupang		1°09.10'N 103°55.70'E
<hr/>			

II
TEMPORARY AND PRELIMINARY NOTICES

Nil

III NAVIGATIONAL INFORMATION

*(NM 66/2008) PORT MARINE NOTICES

The following PMNs have been shortlisted, as they would be of particular interest to mariners.

These notices can be accessed directly from MPA website:

http://www.mpa.gov.sg/circulars_and_notices/portmarine_notices/pm_notices.htm

PMN No.	Subject
40/2008	Dredging works in East Keppel Fairway and its vicinity.
41/2008	Installation of silt barricade off Labrador nature reserve.
44/2008	Construction of: (a) Causeway across Pulau Punggol Barat and Pulau Punggol Timor; and (b) Bridge across Pulau Punggol Barat and Mainland (Seletar).
49/2008	Temporary material landing facility in Ayer Merbau Basin.
51/2008	High spot removal within Selat Damar Laut Basin near the completed Berth J12 and J25 Extension.
52/2008	Construction of seawall and land reclamation in Cruise Bay.
54/2008	Reclamation of Jurong Island Phase 4 and Tuas View Extension.
55/2008	Marine construction at Jurong Port, Berth J3/J4.
58/2008	Newater Submarine pipeline and services from Jurong Island to Pulau Ular.
59/2008	Dredging works at Changi Creek.
62/2008	Reclamation works in Ayer Merbau Basin.
63/2008	Sand mining at Changi East.

*(NM 67P/2008) DREDGING FROM THE SINGAPORE PORT LIMIT AND THE WEST BOUND LANE OF THE TRAFFIC SEPARATION SCHEME IN THE SINGAPORE STRAIT

Purpose

Mariners navigating in the Singapore Strait are hereby informed that dredging operations will be carried out from the Singapore Port Limit and the westbound lane of the Traffic Separation Scheme.

Date

With effect from 17 Dec 2007 until 17 Dec 2011 (48 months).

Duration

24 hours a day, seven days a week with effect from 10 April 2008. On going dredging works will be carried out during daylight hours prior to 10 April 2008.

Working Area

Within an area bounded by the following coordinates from Singapore Port Limit and the area within the westbound lane of the Traffic Separation Scheme (please see chart attached):

III NAVIGATIONAL INFORMATION

WGS 84 Datum		
Points	Lat. (N)	Long. (E)
1	1°15.827'	103°57.737'
2	1°14.865'	103°58.134'
3	1°13.298'	103°54.401'
4	1°13.884'	103°54.131'

Vessels

Vessels involved in the operations will display the appropriate day and night signals and will stand by on VHF Ch 14 and 12 and shall follow any traffic information given by Vessel Traffic Service of Singapore (VTIS).

Navigational Broadcast

Navigational warning broadcast will be promulgated by (VTIS) on VHF CH 09 and NAVTEX to inform vessels of the dredging operation. Mariners are to maintain a listening watch for the above safety information.

Caution

Mariners are advised to:

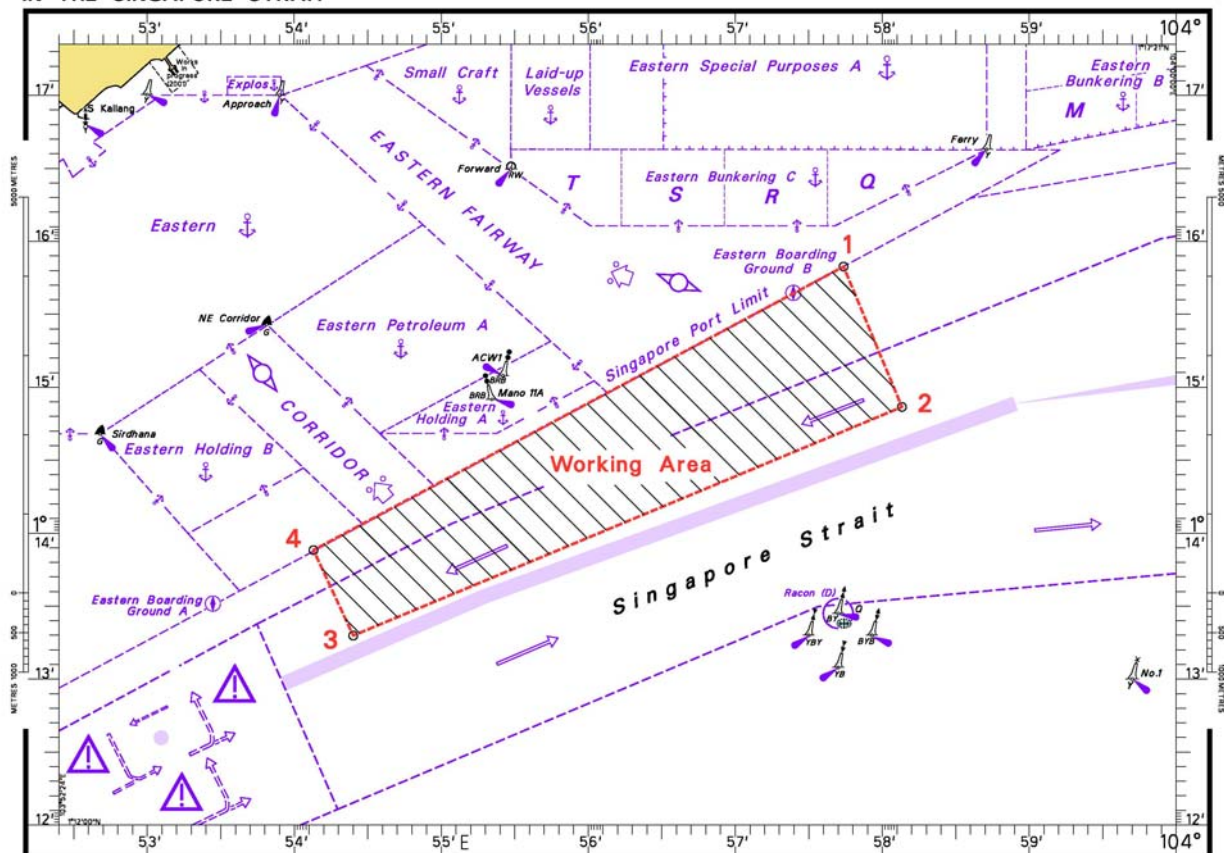
- (a) Navigate with caution and proceed at a safe speed when approaching the area; and
- (b) Keep well clear of the working vessels.

Charts affected: SP1/GSP1, 202, 501, 502, 4037 & 4041

Source: HD/DB67/010/2008

(Previous Notice No. 34P/2008 is superseded)

DREDGING FROM THE SINGAPORE PORT LIMIT AND THE WEST BOUND LANE OF THE TSS IN THE SINGAPORE STRAIT



III NAVIGATIONAL INFORMATION

*(NM 68/2008) SINGAPOREAN PRINT ON DEMAND (POD) CHARTS

Print On Demand (POD) Charts are the most up-to-date paper nautical charts printed for navigational use. These nautical charts are produced in accordance with the International Hydrographic Organisation (IHO) charting specifications. These official nautical charts are continually updated to the latest Notices to Mariners before they are printed and sold to users.

These POD Charts include 200, 201, 202, 500, 501, 502.

BENEFITS TO OUR CUSTOMERS

Convenience

Customers need not make numerous hand corrections to the nautical charts before use. In addition the updated POD Charts are more accurate and reliable than offset printed charts with hand corrections.

Clarity

Clarity in the presentation of updated information as compared to lithographic printed charts, where in some cases there are several overlapping corrections over existing information.

Coverage

The POD Charts cover the Malacca and Singapore Straits, from One Fathom Bank to Horsburgh Lighthouse.

III AMENDMENTS TO PUBLICATIONS

***(NM 69/2008) UPDATING OF PUBLICATION "SINGAPORE PORT INFORMATION 2008/2009 EDITION"**

1 Page 92

NAVIGATIONAL CHANNELS – CONTROL DEPTHS

Amend the following:

S/No.	Navigational Channels	Controlling Depth (m) At Chart Datum	
		Delete	<i>Insert</i>
5	East Keppel Fairway – Western Portion	13.5	13.4
6	East Keppel Fairway – Deep Channel	14.4	15.1
8	Cruise Bay (Tanjong Berlayer to Berth CC01)	10.1	10.7
10	Jong Fairway <i>Note: A High spot of 15.1m exists approximately 355° X 2 cables from first Bukom Bn.</i>	16.6	16.5
12	West Keppel Fairway	14.6	14.4
13	Sinki Fairway – (dredged channel) – Sinki Buoy to Tankstore at Pulau Bukom <i>Remark: Up to Tankstore at Pulau Busing</i>	18.1	18.0
14	Sinki Fairway – Pulau Busing to Cyrene Beacon	16.1	16.0

S/No.	Navigational Channels	
	Delete	<i>Insert</i>
9	Sister's Fairway (Selat Tanjong Hakim)	Sister's Fairway
17	West Jurong Fairway	West Jurong Channel

Insert the following:

S/No.	Navigational Channels	Controlling Depth (m) At Chart Datum
19	Cruise Bay (Berths CC01 to CC03)	10.1

Source: HD/DB67/011/2008

2 Page 146 – Item 24

**JURONG ISLAND – PULAU SERAYA POWER STATION (PSPS)
(PETRO SERAYA PTE LTD)(1°17.1'N, 103°43.5'E)**

Amend the following:

Berth		Depth Alongside (Year Surveyed)	
Delete	<i>Insert</i>	Delete	<i>Insert</i>
3	*3	10.6m (2004)	10.5m (2007)

*** Loading and Unloading of Liquids and Solids**

Source: HD/HY Code H00104807

III
AMENDMENTS TO PUBLICATIONS

3 Page 146 – Item 24

JURONG ISLAND – PULAU SERAYA POWER STATION (PSPS)
(PETRO SERAYA PTE LTD)(1°17-1'N, 103°43-5'E)

Insert the following:

Berth	Length of Berth	Max LOA	Depth Alongside (Year Surveyed)	Controlling Depth In Approaches
Water Jetty	50m	-	1-6m (2007)	-

Source: HD/HY Code H00104807

4 Page 154 – Item 45

JURONG ISLAND – (SHELL EASTERN PETROLEUM PTE LTD)(1°15-8'N, 103°43-5'E)

Insert the following:

Berth	Length of Berth	Max LOA	Depth Alongside (Year Surveyed)	Controlling Depth In Approaches
Merbau Offloading Facility	95m	-	4-3m (2007)	-

Source: HD/HY Code D00101208

5 Page 143 – Item 13

TANJONG PENJURU– (CHEVRON SINGAPORE PTE LTD)(1°17-7'N, 103°44-3'E)

Amend the following:

Berth	Depth Alongside (Year Surveyed)	
	Delete	Insert
1	13.3m (2001)	13-6m (2007)

Berth	Depth Alongside (Year Surveyed)		Controlling Depth In Approaches	
	Delete	Insert	Delete	Insert
5	11.5m (2000)	11-0m (2007)	12.0m	10-3m

Source: HD/HY Code H00104207

IV
REPRINT OF RADIO NAVIGATIONAL WARNINGS

Nil

V
**REPRINT OF ADMIRALTY NOTICES TO MARINERS
 FOR DUAL BADGED CHARTS**

These notices can be accessed directly from UKHO Website:

<http://www.ukho.gov.uk/amd/weeklyNms.asp>

1031* SINGAPORE STRAIT - Bedok Southwards - Cautionary note. Legend.

Source: Maritime and Port Authority of Singapore

Note: Former Notice 555(T)/08 is cancelled

Chart 4037 [previous update 854/08] WGS84 DATUM

Insert the accompanying note, DREDGING AREA, centred on: 1° 16′.155N., 103° 50′.820E.
 Amend legend to, *Dredging Area* (see Note), centred on: 1° 13′.880N., 103° 54′.780E.

Chart 4041 [previous update 855/08] WGS84 DATUM

Insert the accompanying note, DREDGING AREA, centred on: 1° 18′.90N., 103° 56′.16E.
 Amend legend to, *Dredging Area* (see Note), centred on: 1° 14′.46N., 103° 55′.96E.

1032* SINGAPORE - Kuala Johor and Pelabuhan Calder - Works. Buoyage. Maritime limit. Legend.

Source: Maritime and Port Authority of Singapore

Chart 4042 [previous update 5366/07] WGS84 DATUM

Insert the accompanying block, showing new buoyage and amendments to maritime limit and legend, centred on: 1° 20′.74N., 104° 04′.43E.

Chart 4043 [previous update 851/08] WGS84 DATUM


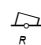
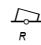
Insert the accompanying block, showing new buoyage, amendments to maritime limit and legend, centred on: 1° 21′.04N., 104° 04′.02E.
 maritime limit, pecked line, joining: (a) 1° 23′.04N., 104° 05′.16E. ()
 1° 23′.49N., 104° 05′.34E.
 (b) 1° 23′.66N., 104° 05′.39E.
 1° 23′.99N., 104° 05′.42E.
 1° 24′.24N., 104° 05′.41E.
 (c) 1° 24′.38N., 104° 05′.38E.
 1° 24′.48N., 104° 05′.26E.
 1° 24′.54N., 104° 05′.11E.
 (shore)
 FI.R.2s TJUT-22 (b) above
 FI.R.10s TJUT-23 (c) above
 Amend legend to, Works in progress (2007), centred on: 1° 24′.27N., 104° 01′.22E.
 Delete maritime limit, pecked line joining: (a) above
 1° 23′.70N., 104° 04′.86E.
 (shore)

Chart 4044 [previous update 851/08] WGS84 DATUM

Amend legend to, Works in progress (2007), centred on: 1° 24′.27N., 104° 01′.22E.
 1° 22′.10N., 104° 03′.19E.

V
**REPRINT OF ADMIRALTY NOTICES TO MARINERS
 FOR DUAL BADGED CHARTS**

1182* SINGAPORE - Jurong Island - Jetties. Coastline. Depths. Restricted area. Works. Fairways. Anchorage areas. Dredged depths. Berths. Lights. Buoyage. Legend.

Light List Vol. F, 2007/08, 1685.65, 1685.73, 1685.74

Source: Maritime and Port Authority of Singapore

Note: Chart 3833 is to be deleted from the list of charts affected by Notice 5559(P)/07.

Chart 4030 [*previous update 5747/07*] WGS84 DATUM

Insert	the accompanying block, showing new jetty, dredged depths, berths, light and amendments to buoyage, depths, coastline and works, centred on:	1° 13' .580N., 103° 40' .260E.
Amend	legend to, Works in progress (2007), centred on:	1° 15' .786N., 103° 39' .184E. 1° 14' .522N., 103° 39' .764E.

Chart 4031 [*previous update 209/08*] WGS84 DATUM

Insert	the accompanying block, showing new jetty, dredged depths, berths, light and amendments to buoyage, depths, coastline and works, centred on:	1° 13' .580N., 103° 40' .260E.
	★ _Y Fl.Y.4s11m3M MD1	1° 13' .937N., 103° 41' .127E.
	★ _Y Fl.Y.6s12m3M MD21	1° 14' .350N., 103° 41' .485E.
Amend	legend to, Works in progress (2007), centred on:	1° 15' .792N., 103° 39' .176E. 1° 14' .523N., 103° 39' .766E.
Delete	maritime limit, pecked line, joining:	1° 13' .447N., 103° 40' .699E. (E limit of block) 1° 13' .489N., 103° 40' .766E. 1° 13' .681N., 103° 41' .023E. 1° 13' .817N., 103° 41' .097E. 1° 13' .923N., 103° 40' .992E.

Chart 4032 [*previous update 849/08*] WGS84 DATUM

Insert	the accompanying block, showing new jetty and amendments to depths and coastline, centred on:	1° 13' .570N., 103° 40' .418E.
	★ _Y Fl.Y.4s11m3M MD1	1° 13' .937N., 103° 41' .127E.
	★ _Y Fl.Y.6s12m3M MD21	1° 14' .350N., 103° 41' .485E.
Delete	maritime limit, pecked line, joining:	1° 13' .447N., 103° 40' .699E. (E limit of block) 1° 13' .489N., 103° 40' .766E. 1° 13' .681N., 103° 41' .023E. 1° 13' .817N., 103° 41' .097E. 1° 13' .923N., 103° 40' .992E.

Chart 4033 [*previous update 4854/07*] WGS84 DATUM

Amend	legend to, Works in progress (2007), centred on:	1° 15' .800N., 103° 39' .160E.
-------	--	--------------------------------

Chart 4038 [*previous update 877/08*] WGS84 DATUM

V
REPRINT OF ADMIRALTY NOTICES TO MARINERS
FOR DUAL BADGED CHARTS

Insert the accompanying block, showing new jetty, light and amendments to depths, coastline and works, centred on: 1° 14'·18N., 103° 40'·03E.

Chart 4039 [*previous update 850/08*] WGS84 DATUM

Insert the accompanying block, showing new jetty and amendments to depths and coastline, centred on: 1° 13'·43N., 103° 40'·38E.

Chart 4040 [*previous update 855/08*] WGS84 DATUM

Insert the accompanying block, showing new jetty and amendments to coastline, centred on: 1° 13'·78N., 103° 40'·48E.

Amend legend to, Works in progress (2007), centred on: 1° 14'·98N., 103° 39'·49E.

1183* SINGAPORE - Selat Sinki - Pulau Busing - Jetty. Berths. Dredged areas. Depths. Restricted area. Works.

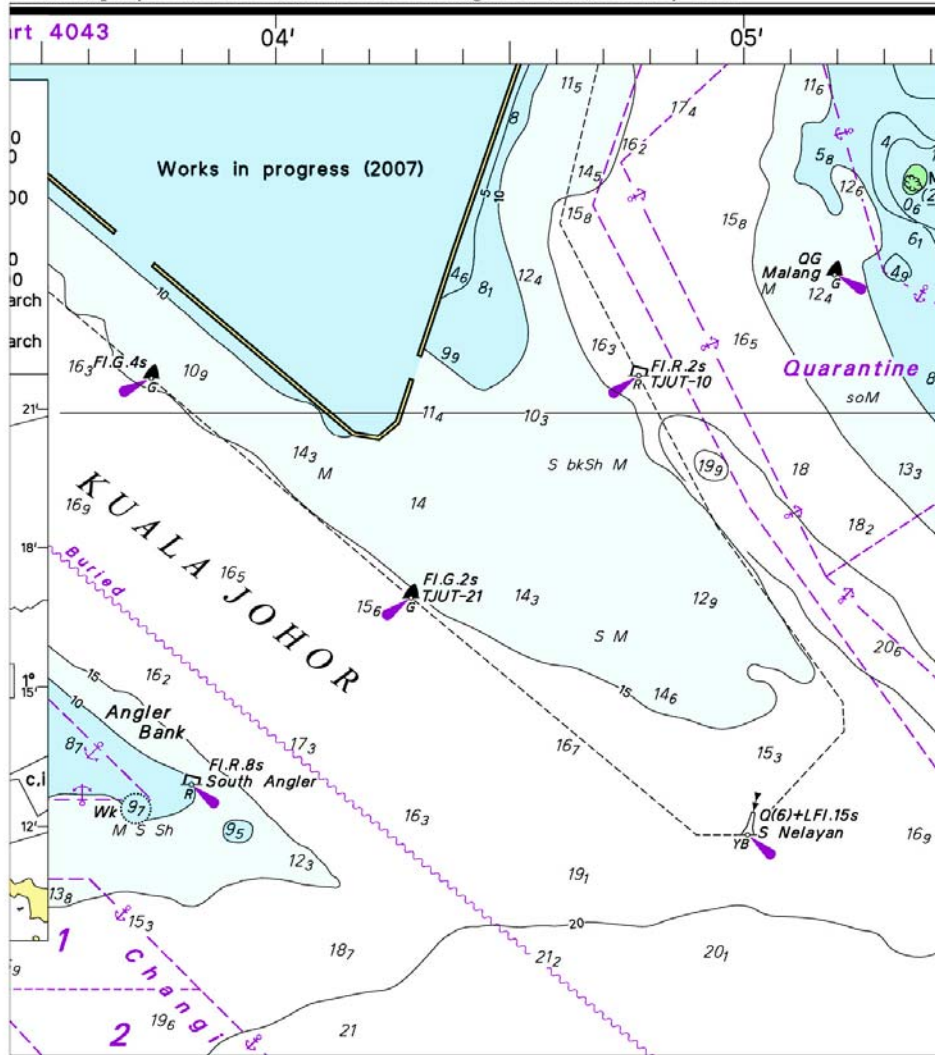
Source: Maritime and Port Authority of Singapore

Chart 4032 [*previous update 1182/08*] WGS84 DATUM

Insert the accompanying block, showing new jetty, berths, dredged depths and amendments to depths, restricted area and works, centred on: 1° 14'·250N., 103° 44'·260E.

V
REPRINT OF ADMIRALTY NOTICES TO MARINERS
FOR DUAL BADGED CHARTS

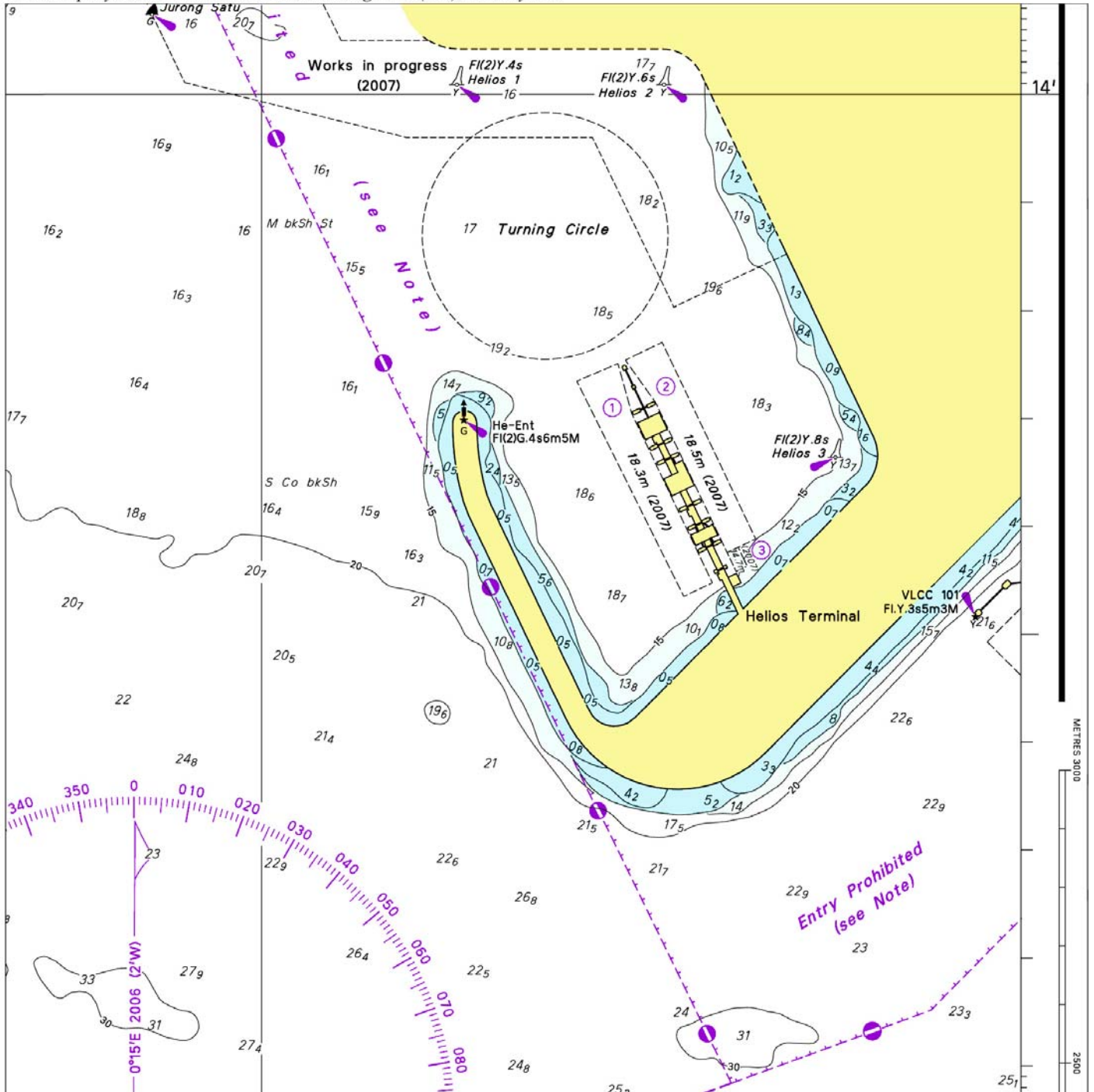
To accompany Notice to Mariners 1032/08. Image Size (mm) 139.2 by 123.2



Block for Chart No 4042

V
REPRINT OF ADMIRALTY NOTICES TO MARINERS
FOR DUAL BADGED CHARTS

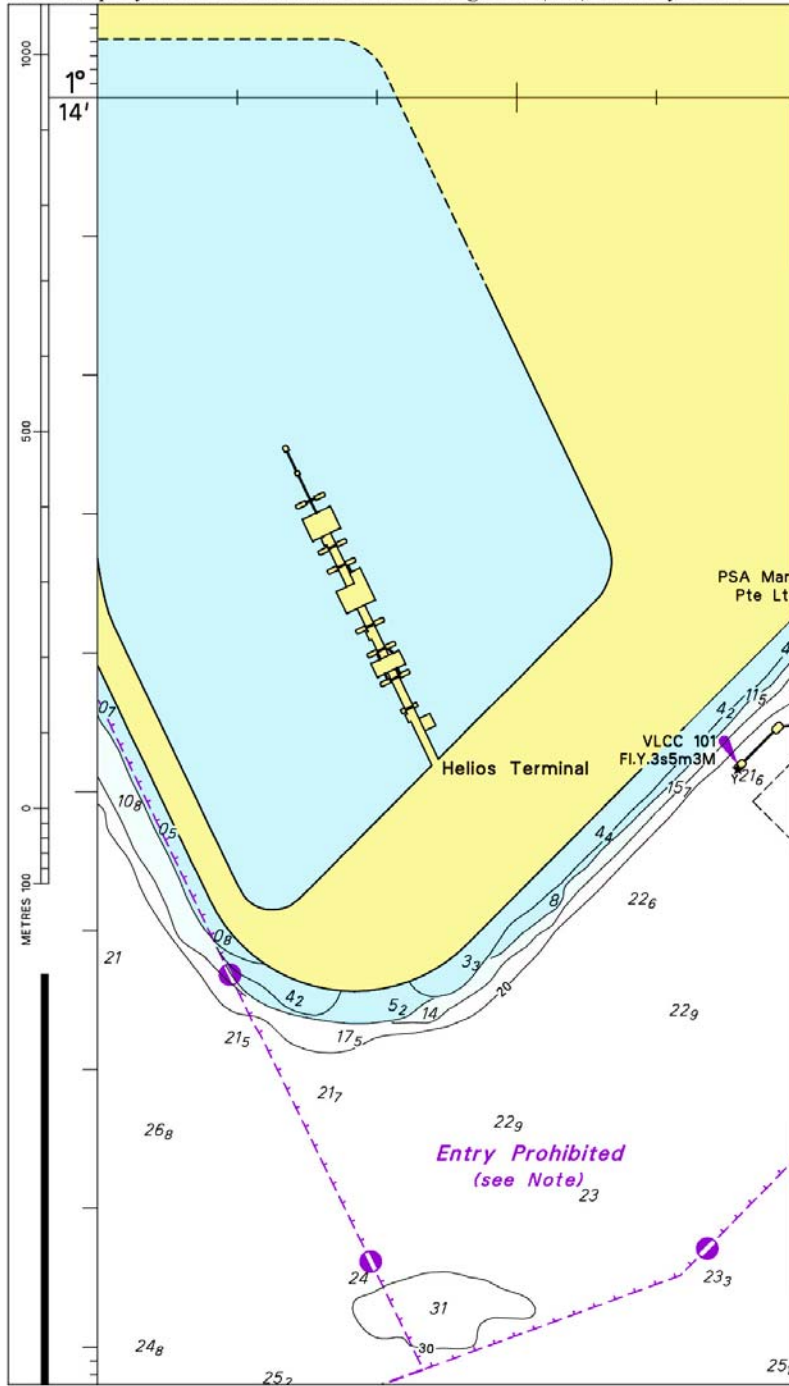
To accompany Notice to Mariners 1182/08. Image Size (mm) 186.4 by 185



Block for Chart No 4030

V
REPRINT OF ADMIRALTY NOTICES TO MARINERS
FOR DUAL BADGED CHARTS

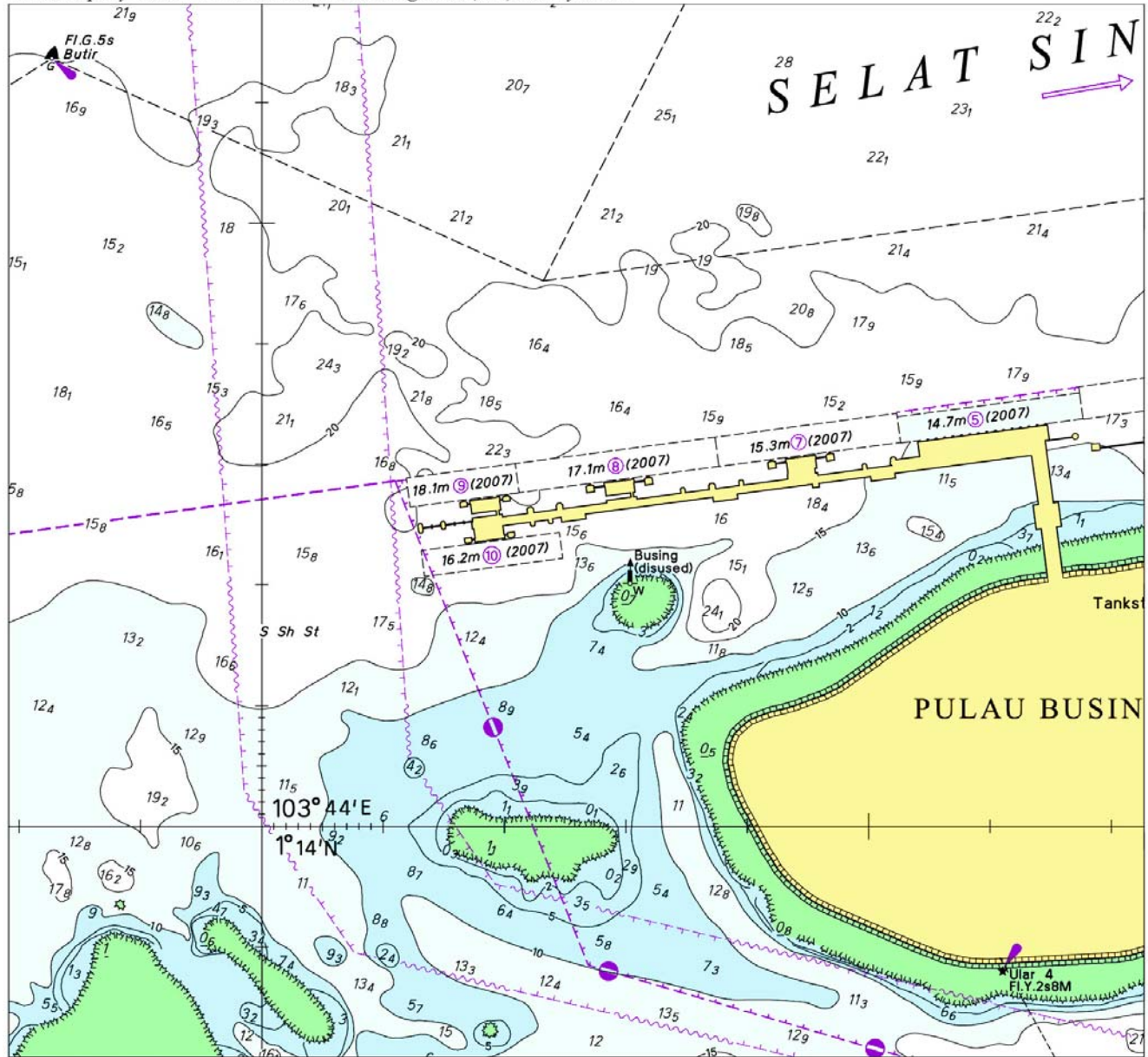
To accompany Notice to Mariners 1182/08. Image Size (mm) 183.2 by 104.3



Block for Chart No 4032

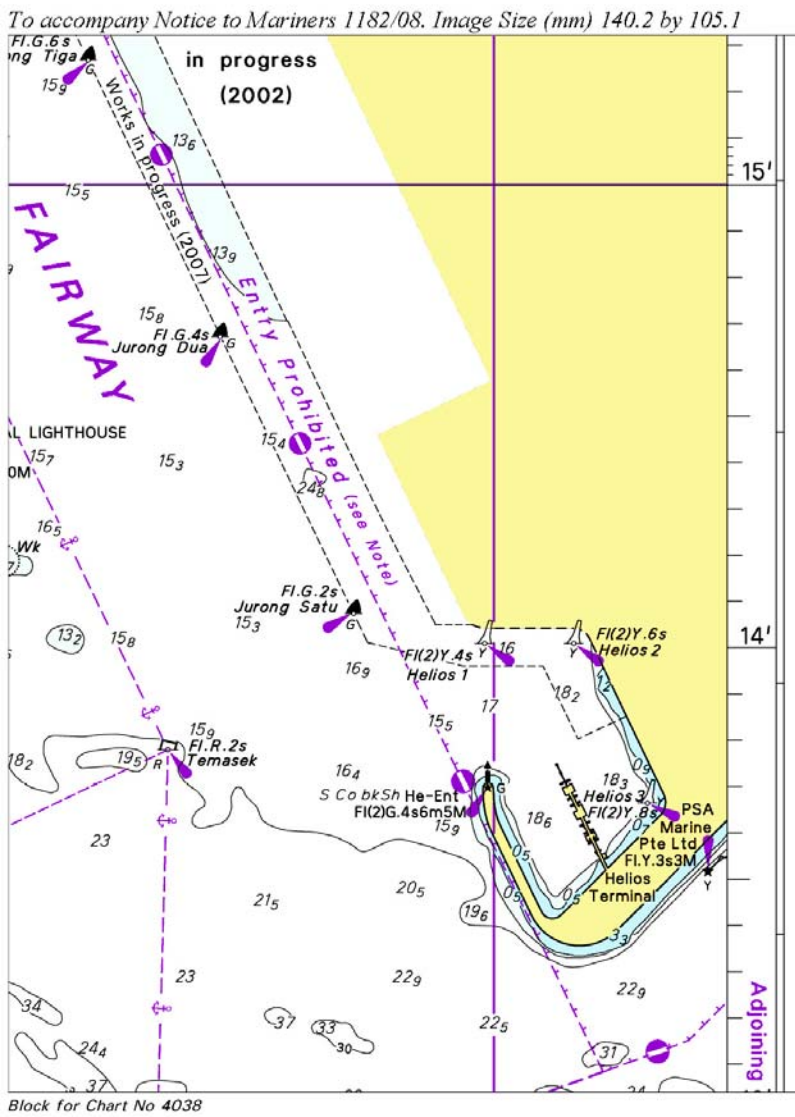
V
REPRINT OF ADMIRALTY NOTICES TO MARINERS
FOR DUAL BADGED CHARTS

To accompany Notice to Mariners 1183/08. Image Size (mm) 161 by 173.5



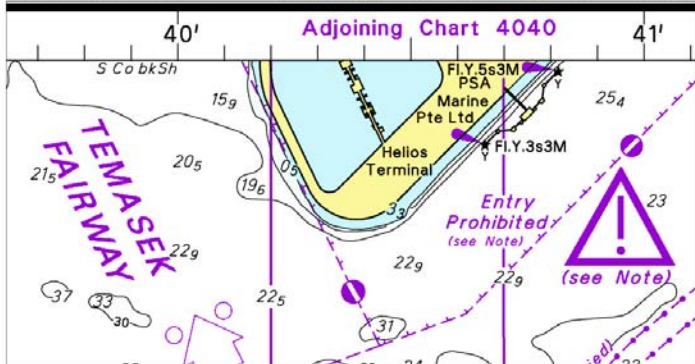
Block for Chart No 4032

V
REPRINT OF ADMIRALTY NOTICES TO MARINERS
FOR DUAL BADGED CHARTS



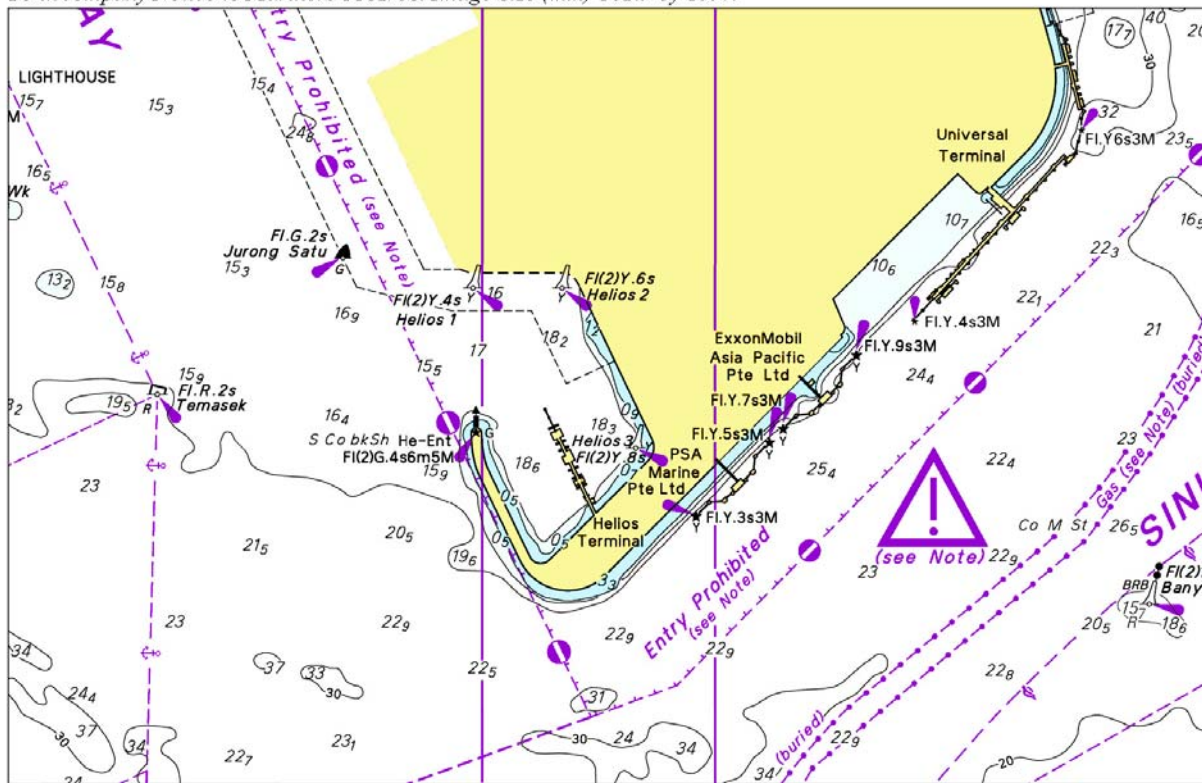
V
REPRINT OF ADMIRALTY NOTICES TO MARINERS
FOR DUAL BADGED CHARTS

To accompany Notice to Mariners 1182/08. Image Size (mm) 48.4 by 91.6



Block for Chart No 4039

To accompany Notice to Mariners 1182/08. Image Size (mm) 102.9 by 159.4



Block for Chart No 4040

Updated to Admiralty Notices to Mariners Edition No. 12 of 2008 dated 20 March 2008.

SINGAPORE ELECTRONIC NAVIGATIONAL CHARTS (ENC) DISTRIBUTORS

Please approach any of the appointed distributors to purchase the Singapore ENC.

CONTACT PERSON/ DESIGNATION	ADDRESS	TELEPHONE/FAX NO./EMAIL/WEBSITE
Mr Chong Chee Meng General Manager	DPM (Singapore) Pte Ltd 1 Maritime Square, #09-72 Harbour Front Centre, Singapore 099253	Tel. No.: +65 6270 4060 Fax No.: +65 6276 3858 Email: sales@dpsmsingapore.com.sg Website: http://www.dpsmsingapore.com.sg
Mr Hamzah Akhbar MDS Branch Manager	Kelvin Hughes(S) Pte Ltd 8 Pandan Avenue #02-00, Singapore 609384	Tel. No.: +65 6545 9880 ext.24 Fax No.: +65 6545 8892 Email: hamzah.akhbar@khsing.com Website: http://www.kelvinhughes.co.uk
Mr Bernard Wong Sales Manager	Motion Smith 76 Shenton Way #01-01, Singapore 079119	Tel. No.: +65 6220 5098 Fax No.: +65 6225 4902 Email: sales@motsmith.com Website: http://www.motsmith.com
Mr Dexter Lee Regional Sales Manager	Transas Marine Pacific Pte Ltd 750C Chai Chee Road, Technopark@Chai Chee, #04-07 Singapore 469003	Tel. No.: +65 6443 3061 Fax No.: +65 6443 3025 Email: dexter@transas.com.sg Website: http://www.transas.com.sg
Mr Choy Kum Weng Director	Vector Services Pte Ltd 15 West Coast Highway, #02-14A Pasir Panjang Building Singapore 117861	Tel. No.: +65 6777 3602 Fax No.: +65 6777 9203 Email: kwchoy@pacific.net.sg
Mr George Arts President	Marine Press of Canada 640 Rue St-Paul Ouest, Suite 300 Montreal (QC) Canada, H3C1L9	Tel. No.: (514) 866-8342 Fax No.: (514) 866-9050 Email : sales@marinepress.com Website: http://www.marinepress.com
Mr Thomas Wilde Superintendent	HanseNautic GmbH Bade & Hornig, Eckardt & Messtorff Herrengaben 31 D-20459 Hamburg, Germany	Tel. No.: +49 40 374 811-32 Fax No.: +49 40 366 400 Email: wilde@hansenautic.de Website : http://www.HanseNautic.com
Ms Verena Borsos Manager	SevenCs AG + Co. KG Ruhrstrasse 90, D-22761 Hamburg, Germany	Tel. No.: +49 40 853 58 6940 Fax No.: +49 40 853 58 6949 Email: sales@chartworld.com Website : http://www.sevencs.com
Mr Keiji Shimizu General Manager	Japan Hydrographic Association Electronic Charts Division Daiichi Sogo Bldg, 6F 1-6-6, Hanedakuko, Ota-ku Tokyo 144-0041 Japan	Tel. No.: +81 3 5708 7093 Fax No.: +81 3 5708 7094 Email: enc-support@jha.jp Website: http://www.jha.jp
Mr Jester-Kim Foreign Business Department Manager	E_MLX Co. Ltd Ssangyong Research No.2 Lab Sinseong-Dong 100 Yusong-Gu, Daejoen 305-804, Korea (ROK)	Tel. No.: +82 42 865 1893 Fax No.: +82 42 865 1884 Email: Jester-kim@emlx.co.kr
Mr C G Kim Managing Director	Korean Ocean Development Co. Ltd 2ND Fl, Dongbang Bldg, 25-4, 4 Ga Jungang-Dong, Jung-Gu, Busan, South Korea	Tel. No.: +82 514 66 0760 Fax No.: +82 514 65 9345 Email: sales@chartkorea.com Website: http://www.chartkorea.com

SINGAPORE ELECTRONIC NAVIGATIONAL CHARTS (ENC) DISTRIBUTORS
Please approach any of the appointed distributors to purchase the Singapore ENC.

CONTACT PERSON/ DESIGNATION	ADDRESS	TELEPHONE/FAX NO./EMAIL/WEBSITE
Mr Kjell Nodland	Jeppesen Norway A/S P.O Box 212 , N-4379 Egersund, Norway	Tel No.: +47 514 64 700 Fax No.: +47 514 64 701 Email: enc@c-map.no Website : http://www.c-map.no
Mr Roar Moe International Marketing Coordinator	Maritime Information System AS (MARIS) Danholmen 25, No.3115 Tonsberg, Norway	Tel. No.: +47 33 30 42 50 Fax No.: +47 33 30 42 51 Email: roar.moe@maris.no Website: http://www.maris.no
Ms Eva Hegland Sales, order and distributor support.	PRIMAR STAVANGER Lervigsveien 36, P.O Box 60, N-4001 Stavanger, Norway	Tel. No.: +47 51 93 9500 Fax No.: +47 51 93 9501 Email: sales@primar.org Website : http://www.primar-stavanger.org
Mrs Christine Trickett Product Manager	United Kingdom Hydrographic Office Admiralty Way, Taunton, Somerset TA1 2DN United Kingdom	Tel. No.: +44 (0)1823 337900 Fax No.: +44 (0)1823 284077 Emails: vargroup@ukho.gov.uk & christine.trickett@ukho.gov.uk Website: http://www.ukho.gov.uk

Agents for the Maritime and Port Authority of Singapore Publications

Agent's name : **DPM (Singapore) Pte Ltd**
Address : 1 Maritime Square #09-72, HarbourFront Centre,
Singapore 099253
Telephone : (65) 6270 4060
Fax No. : (65) 6276 3858
E-mail : sales@dpmsingapore.com.sg
Internet Web Site : <http://www.dpmsingapore.com.sg>

Agent's name : **E.W. Liner Charts & Publications Pte Ltd**
Address : 102F, Pasir Panjang Road, #08-01, Citilink Warehouse Complex,
Singapore 118530
Telephone : (65) 6323 0773
Fax No. : (65) 6323 0775
E-mail : ewliner@singnet.com.sg
Internet Web Site : <http://www.ewliner.com>

Agent's name : **Motion Smith**
Address : 76 Shenton Way # 01-01
Singapore 079119
Telephone : (65) 6220 509
: (After office hours: 8163 9993)
Fax No. : (65) 6225 4902
E-mail : sales@motsmith.com
Internet Web Site : <http://www.motsmith.com>

HYDROGRAPHIC NOTE - Instructions

1. Mariners are requested to notify the Chief Hydrographer, Maritime and Port Authority of Singapore, when new or suspected dangers to navigation are discovered, changes are observed in aids to navigation or where corrections to nautical publications may be necessary. Reports, which cannot be confirmed or are lacking in certain details should not be withheld.
2. Any ambiguities of time, positioning and depth should be stressed and any firm expectation of being able to check the information provided on a following voyage should be mentioned.
3. Mariners using satellite position fixing systems, eg. GPS, should provide details of equipment and datum used (where applicable). Where bearings (true or magnetic) are taken visually or by radar to fix a position, it should include more than two objects in order to provide a check on its accuracy. A position may also be defined by bearing and distance from a conspicuous object eg. beacon, lighthouse etc.
4. The note should include a tracing or a digital image of the chart used and the details should be clearly marked.
5. Echo sounders frequently register greater depths than the advertised maximum depth for the equipment, eg. a trace appearing at 50 metres may be in fact be 550 metres or even 1050 metres for equipment whose maximum depth is 500 metres. Erroneous depths caused by 2nd transmission error can usually be recognised by the following:
 - (a) the tracing being weaker than normal for the depth registered,
 - (b) the trace appearing to pass through the transmission line,
 - (c) the feathery nature of the trace.
6. An acknowledgement of receipt will be sent. When a Notice to Mariners is issued, the sender's vessel or name is quoted as the source unless the same information is also received in foreign Notices to Mariners.
7. Reports of shoals, uncharted dangers and defects in aids to navigation may also be made to the appropriate Singapore Port Operations Control Station on VHF Channels 10, 12, 14, 68 or 73.

HYDROGRAPHIC NOTE

To:

Chief Hydrographer
Hydrographic Department
Maritime and Port Authority of Singapore
460 Alexandra Road PSA Building #20-00
Singapore 119963

Tel : (65) 6375 1227
Fax : (65) 6278 7646
Email : hydrographic@mpa.gov.sg

Sender's Contact Details :

Date :

Name of Vessel :

Address of Sender :

Tel : Fax :

Email :

Nature of Observation :

General Location :

Subject :

Position : Lat. Long.

Charts Used :

Date & Time of Observation :

Details :

.....

.....

Attachment :

Equipment Used :

Type of Position Fixing : GPS / DGPS Others :

Type of Echo Sounder :

Name and Signature :

Ship's/Company's stamp :