



SINGAPOREAN NOTICES TO MARINERS

SECTION	CONTENT	Page
I	Index of Charts & Publications	65
II	New Publications	70
	Notices to Mariners and Chart Corrections	71
	Temporary and Preliminary Notices	72
III	Navigational Information	73
	Amendments to Publications	74
IV	Reprint of Radio Navigational Warnings	75
V	Reprint of Admiralty Notices to Mariners for Dual Badged Charts	76

The monthly Notices to Mariners contain corrective information affecting charts published by the Hydrographic Department, Maritime and Port Authority of Singapore. The information contained in these Notices should be updated on the charts affected. Notices under Section II apply only to the particular Singaporean Chart(s) indicated.

Mariners are requested to notify the Chief Hydrographer, Maritime and Port Authority of Singapore, immediately on the discovery of new dangers or suspected dangers to navigation and of changes or defects in aids to navigation. See Hydrographic Note on back page.

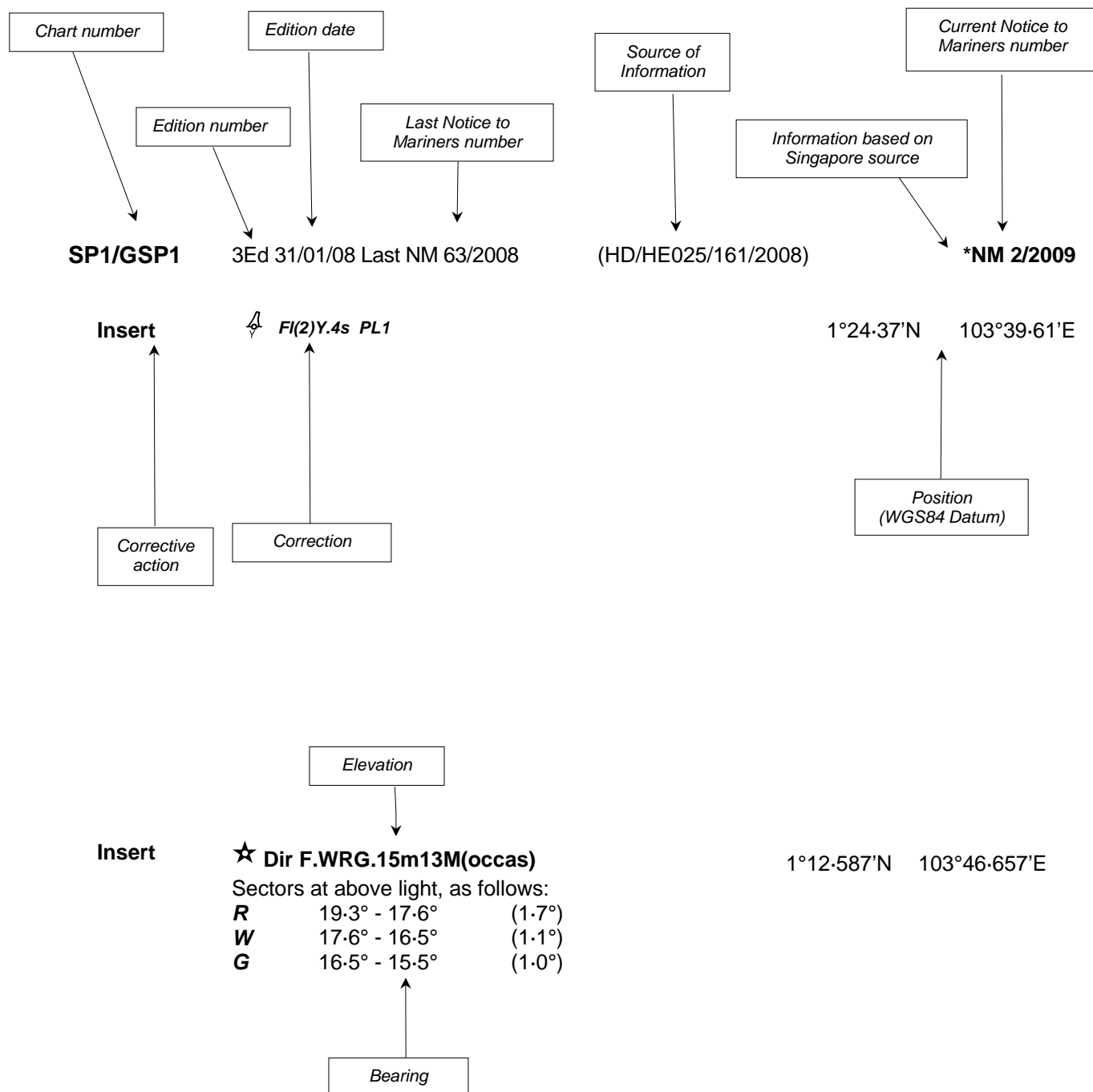
The monthly Singaporean Notices to Mariners can be accessed directly from the MPA website:
[http://www.mpa.gov.sg/sites/port_and_shipping/circulars_and_notices/singapore_notices_to_mariners\(ntm\).page](http://www.mpa.gov.sg/sites/port_and_shipping/circulars_and_notices/singapore_notices_to_mariners(ntm).page)

This service is offered free of charge.

Hydrographic Department
Maritime and Port Authority of Singapore
460 Alexandra Road
PSA Building #20-00
Singapore 119963
Tel: (65) 6375 1227
Fax: (65) 6278 7646

EXPLANATION OF FORMAT

The elements of a typical chart correction are explained below.



Notes:

- Notice to Mariners number followed by:
T indicates a Temporary Notice (eg. ***NM 80T/2008**).
P indicates a Preliminary Notice (eg. ***NM 80P/2008**).
- Bearings are referred to True Compass in degrees clockwise from 000° to 359°. Bearings related to lights are from seaward.
- Heights and elevations are above Mean High Water Springs.

I

INDEX OF CHARTS AND PUBLICATIONS

DESCRIPTION	NOTICE NO.	PAGE NO.
Index of Singaporean Charts	-	67
Index of Dual Badged Charts	-	68
Index of Singapore Electronic Navigational Charts (ENC)	-	69
New Publication "SINGAPORE TIDE TABLES YEAR 2009"	-	70
Singaporean Chart 202	34, 35	71
Temporary and Preliminary Notices	-	72
Port Marine Notices	*36	73
Singaporean Print on Demand (POD) Charts	*37	73
Updating of Publication "SINGAPORE PORT INFORMATION 2008/2009 EDITION"	*38, *39	74
Reprint of Radio Navigational Warnings	-	75
Reprint of Admiralty Notices to Mariners for Dual Badged Charts	-	76
Singapore Electronic Navigational Charts (ENC) Distributors	-	78

* Denotes information are based on Singapore source.

I

INDEX OF CHARTS AND PUBLICATIONS

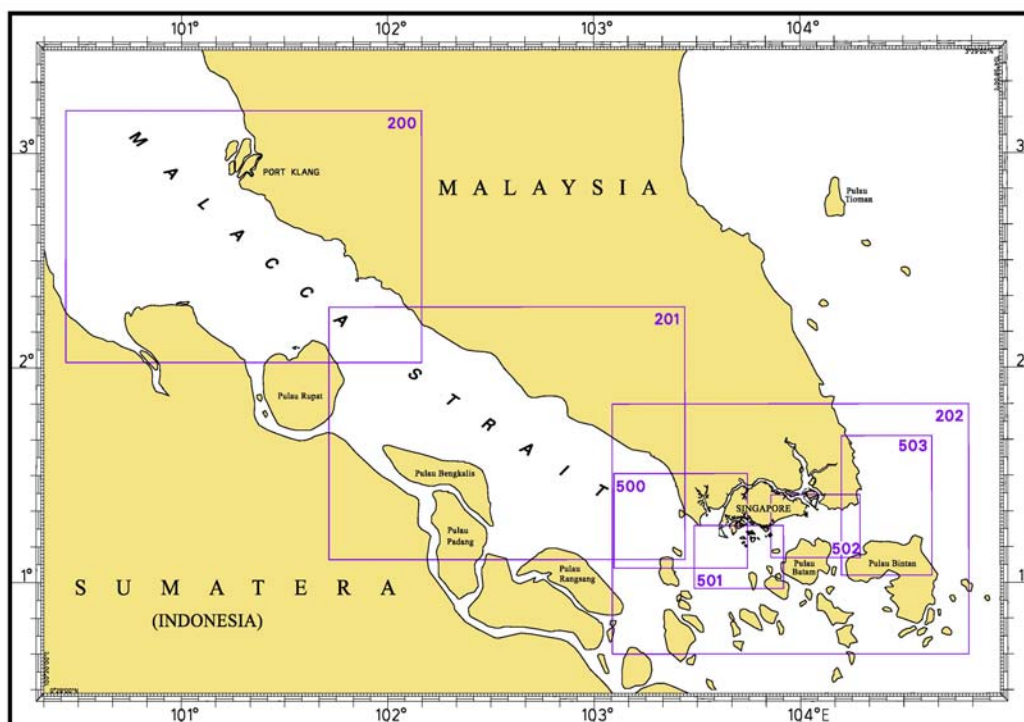
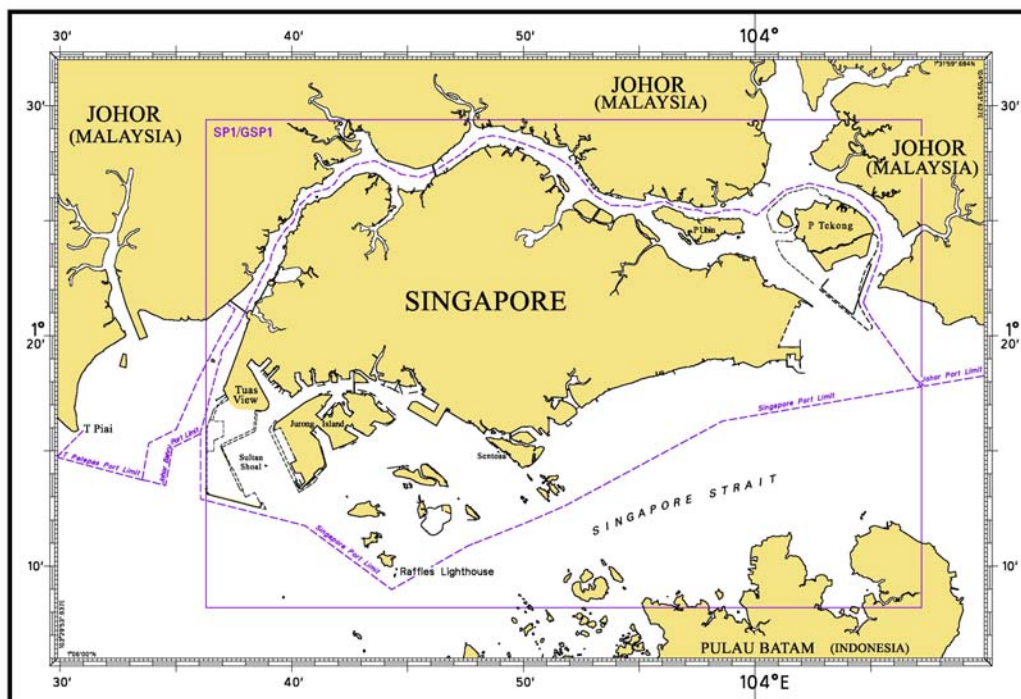
NOTICE NO.	DESCRIPTION	PAGE NO.	NOTICE NO.	DESCRIPTION	PAGE NO.
-	Index of Singaporean Charts	67			
-	Index of Dual Badged Charts	68			
-	Index of Singapore Electronic Navigational Charts (ENC)	69			
-	New Publication "SINGAPORE TIDE TABLES YEAR 2009"	70			
34	202	71			
35	202	71			
-	Temporary and Preliminary Notices	72			
*36	Port Marine Notices	73			
*37	Singaporean Print on Demand (POD) Charts	73			
*38, *39	Updating of Publication "SINGAPORE PORT INFORMATION 2008/2009"	74			
-	Reprint of Radio Navigational Warnings	75			
-	Reprint of Admiralty Notices to Mariners for Dual Badged Charts	76			
-	Singapore Electronic Navigational Charts (ENC) Distributors	78			

* Denotes information are based on Singapore source.

I

INDEX OF CHARTS AND PUBLICATIONS

INDEX OF SINGAPOREAN CHARTS



Notes:

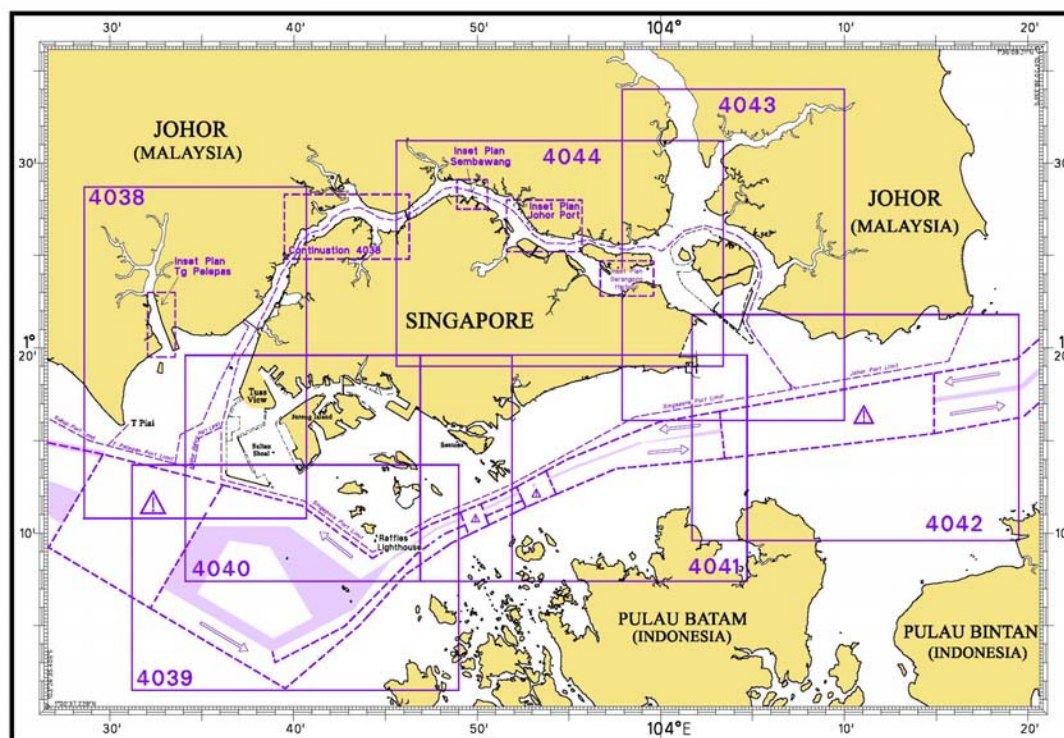
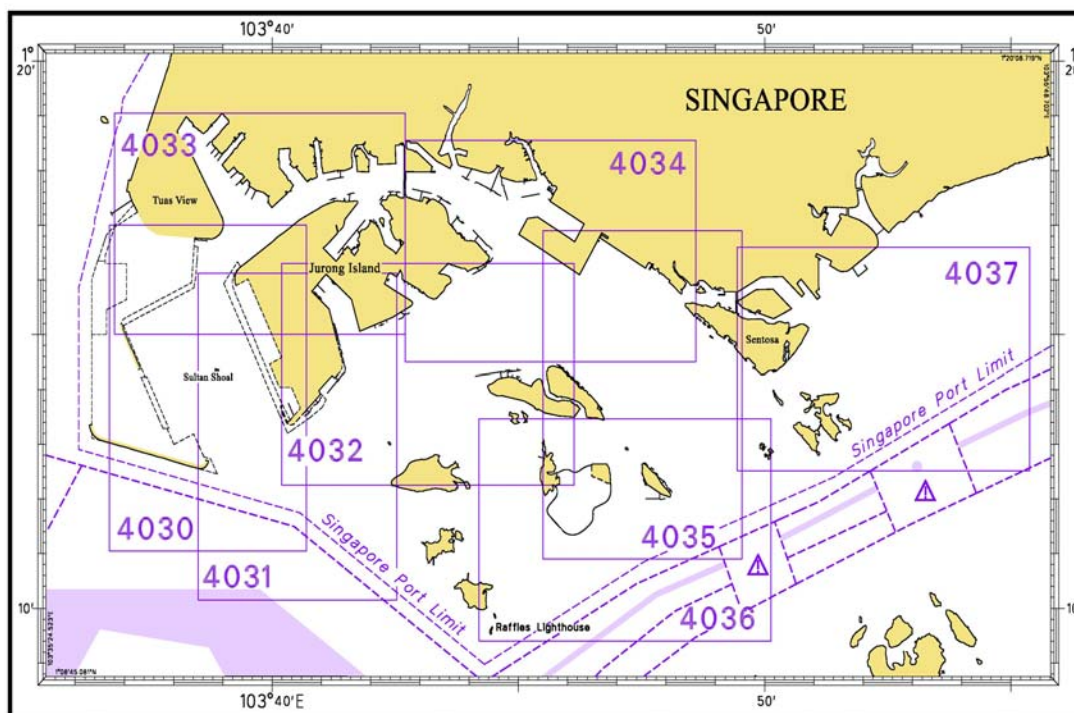
Updated SINGAPOREAN Charts (excluding Charts SP1/GSP1) are available through our Print On Demand (POD) Chart Service. For more information, refer to Section III – Navigational Information and these charts can be purchased from our authorised Chart Agents:

DPM (Singapore) Pte Ltd, E.W. Limer Charts & Publications Pte Ltd and Motion Smith.

I

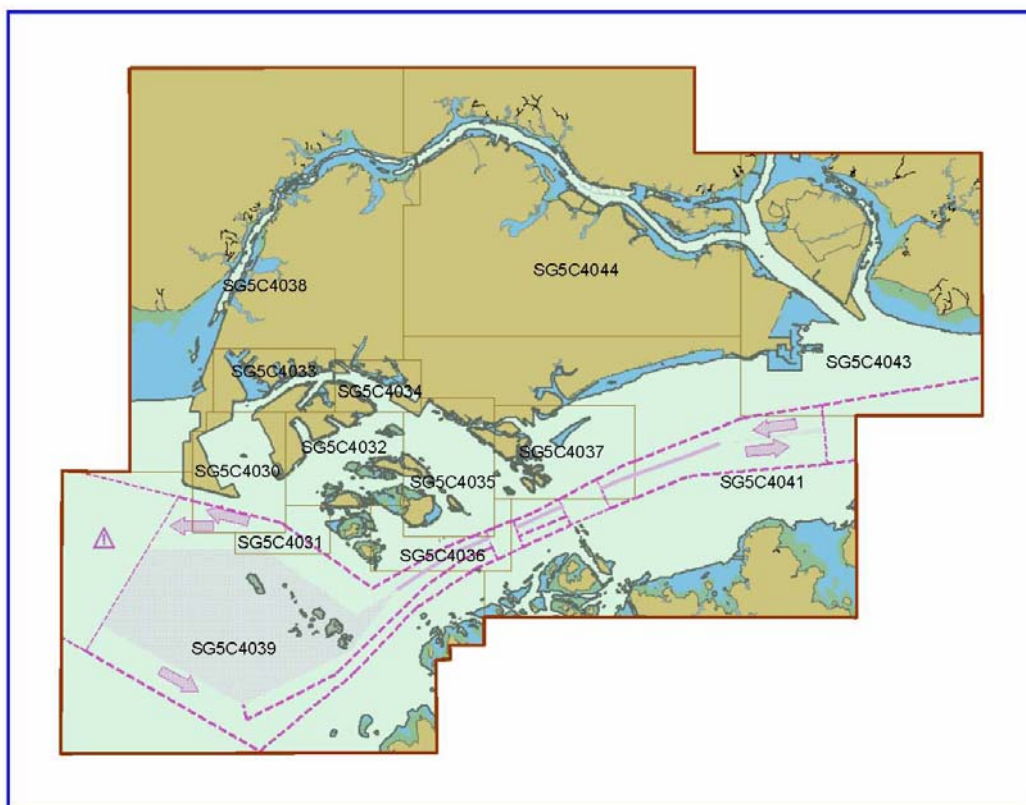
INDEX OF CHARTS AND PUBLICATIONS

INDEX OF DUAL BADGED CHARTS



I
INDEX OF CHARTS AND PUBLICATIONS

INDEX OF SINGAPORE ELECTRONIC NAVIGATIONAL CHARTS (ENC)



II NEW PUBLICATIONS



SINGAPORE TIDE TABLES YEAR 2009 PUBLISHED ON 22 SEPTEMBER 2008

Summary of Publication

- (a) This 239 pages book contains the following information:
The predictions consist of 5 main segments to facilitate easy reference:
- High and Low Water Predictions
 - Hourly Tidal Height Predictions
 - Hourly Tidal Stream Predictions
 - Maximum and Slack Tidal Stream Predictions
 - Malacca Strait – High and Low Water Predictions
- The predictions cover stations in Singapore and selected stations along the Malacca Strait.
- (b) As in earlier publications, the presentation of the predictions is enhanced with colour codes so as to differentiate the various states of tidal heights, eg falling or rising tide and tidal stream directions. Moon phases, eg full and new moon, are also included in each calendar month to complement the prediction values.
- (c) The tidal heights are given in metres above Chart Datum (CD). The CD is the datum of soundings shown on the Singaporean Charts and Dual Badged Charts covering the area. A table showing the various tidal levels eg. Mean High Water Springs, Mean Low Water Springs etc, at various stations with reference to CD is also included in this publication.

To Whom Will It Be Useful?

Mariners, shipping community, port users and other interested users.

Frequency of Publication

Annually.

Cost of Publication

To be advised by Chart Agents.

Order Enquires:

This publication is available from the following Chart Agents:

- 1) DPM (Singapore) Pte Ltd
 - 2) E.W. Liner Charts & Publications Pte Ltd
 - 3) Motion Smith
- (Please refer to Page 79 for details.)

II NOTICES TO MARINERS AND CHART CORRECTIONS

202	5Ed 19/10/06 Last NM 28/2009	(Indonesian Telegram DGST No. 35/2009)	NM 34/2009
Insert	 Fl.R.5s	0°59.16'N	103°26.05'E
Delete	 Fl.R.6s	0°59.10'N	103°26.20'E
(Indonesian Telegram Commander of Western Fleet Command No. 17.085/ARBA/0109)			NM 35/2009
Insert		0°57.25'N	103°29.50'E

II
TEMPORARY AND PRELIMINARY NOTICES

Nil

III NAVIGATIONAL INFORMATION

*(NM 36/2009) PORT MARINE NOTICES

The following PMNs have been shortlisted, as they would be of particular interest to mariners.

These notices can be accessed directly from MPA website:

http://www.mpa.gov.sg/sites/port_and_shipping/circulars_and_notices/port_marine_notices.page

PMN No.	Subject
27/2009	Dredging and bedding layer operations from Jurong Island to Pulau Ular.
30/2009	Slope protection works on St John's Island.
31/2009	A) Dredging operations from Jurong Island to Pulau Ular and B) Bedding layer and wire lay operations from Jurong Island to Pulau Ular.

*(NM 37/2009) SINGAPOREAN PRINT ON DEMAND (POD) CHARTS

Print On Demand (POD) Charts are the most up-to-date paper nautical charts printed for navigational use. These nautical charts are produced in accordance with the International Hydrographic Organisation (IHO) charting specifications. These official nautical charts are continually updated to the latest Notices to Mariners before they are printed and sold to users.

These POD Charts include 200, 201, 202, 500, 501, 502, 503.

BENEFITS TO OUR CUSTOMERS

Convenience

Customers need not make numerous hand corrections to the nautical charts before use. In addition the updated POD Charts are more accurate and reliable than offset printed charts with hand corrections.

Clarity

Clarity in the presentation of updated information as compared to lithographic printed charts, where in some cases there are several overlapping corrections over existing information.

Coverage

The POD Charts cover the Malacca and Singapore Straits, from One Fathom Bank to Horsburgh Lighthouse.

III AMENDMENTS TO PUBLICATIONS

***(NM 38/2009) UPDATING OF PUBLICATION “SINGAPORE PORT INFORMATION 2008/2009 EDITION”**

1 Page 142 – Item 9.1

**SINGAPORE CRUISE CENTRE (SINGAPORE CRUISE CENTRE PTE LTD)
International Passenger Terminal (IPT) - (1°15.7'N, 103°49.1'E)**

Insert the following:

Berth	Depth Alongside (Year Surveyed)	
	Delete	Insert
CC1	12.0m(2002)	12.0m(2009)
CC2	11.4m(2002)	10.8m(2009)

Source : HD/HY Code B00101709

2 Page 154 – Item 46.1

**JURONG ISLAND – BANYAN BASIN
(EXXON CHEMICAL SINGAPORE PTE LTD)(1°15.9'N, 103°41.2'E)**

Insert the following:

Berth	Length of Berth	Width of Berth	Depth Alongside (Year Surveyed)	Controlling Depth In Approaches
Banyan Jetty	100m	31m	3.8m(2008)	-

Source : HD/HY Code E00100509

***(NM 39/2009) UPDATING OF PUBLICATION “SINGAPORE PORT INFORMATION 2008/2009 EDITION”**

ROUTEING AND REPORTING INFORMATION

AMENDMENT TO REPORTING PROCEDURES FOR VESSELS MANOEUVRING IN PORT

Pages 34-44 superseded and replaced by Port Marine Circular No. 4 of 2009.

This circular can be accessed directly from MPA website:

http://www.mpa.gov.sg/sites/port_and_shipping/circulars_and_notices/port_marine_circulars.page

IV
REPRINT OF RADIO NAVIGATIONAL WARNINGS

TT173

VSLs IN EAST JOHOR STRAIT ADVISED TO NAVIGATE WITH CAUTION WHEN NEAR THE PROJECT AREAS OFF PU.TEKONG, PU.SERANGOON, CHANGI AND MALANG PAPAN AS SHALLOW WATER AREAS EXIST. VSLs ADVISED TO KEEP LOOKOUT FOR TUGS AND BARGES NAVIGATING NEAR THE PROJECT AREAS AND PASSENGER FERRIES CROSSING BETWEEN CHANGI AND PULAU TEKONG AND VICINITY OF PASIR GUDANG.

TT352

DAYMARK SIGNALS AT RAFFLES LIGHT HOUSE IS OUT OF ORDER.

TT611

A SHIP REPORTED LOSING HER PORT ANCHOR AND 12 SHACKLES OF ANCHOR CHAIN, IN APROX POSN 01°11.55'N 103°52.52'E, OFF BATU BERHENTI BEACON.

TT619

DREDGER GERARDUS MERCATOR IS CONDUCTING DREDGING OPS IN THE AREA BOUNDED BY COORDINATES:

01°15.827' N 103°57.737' E

01°14.865' N 103°58.134' E

01°13.298' N 103°54.401' E

01°13.884' N 103°54.131' E

VSLs ADVISED TO PROCEED AT SAFE SPEED AND GIVE WIDE BERTH.

TT631

A WOODEN CRAFT SUNK AT 01°19.49'N 104° 02.79'E.

TT753

A SMALL WOODEN CARGO BOAT 10M IN LENGTH SUNK AT 01°15.73'N 103°32.'E.

TT755 (AMENDED 180109 1314Z)

THE POSITION OF THE PROBABLE SUNKEN CRAFT IS LAT 01°18.71'N LONG 104°21.54'E WITH A LEAST DEPTH OF 57METRES.

TT757

A TUG WAS REPORTED SUNK IN LAT 01°22.41'N LONG 104°23.15'E.VSLs ARE ADVISED TO NAVIGATE WITH CAUTION.

TT767

CS CABLE INNOVATOR IS CARRYING OUT CABLE REPAIR OPERATIONS IN THE WESTBOUND LANE TSS AT POSN 01°17.92'N 104°13.62'E.

VSLs ADVISED TO PROCEED AT SAFE SPEED AND GIVE WIDE BERTH WHEN APPROACHING WORKING AREA.

TT769

CS RENE DESCARTES IS CONDUCTING CABLE REPAIR OPERATIONS IN THE WESTBOUND LANE OF TRAFFIC SEPARATION SCHEME, AT PRESENT POSITION 01°17.16'N 104°10.64'E. VESSELS APPROACHING THE VICINITY ARE ADVISED TO KEEP LOOKOUT AND GIVE WIDE BERTH.

ISSUED BY SINGAPORE PORT OPERATION CONTROL CENTRE
(as at 8 March 2009)

V
REPRINT OF ADMIRALTY NOTICES TO MARINERS
FOR DUAL BADGED CHARTS

These notices can be accessed directly from UKHO Website:




<http://www.ukho.gov.uk/amd/weeklyNms.asp>

1208* SINGAPORE – Pulau Bukom Eastwards – Buoy. Light-beacon.

Light List Vol. F, 2008/09, 1690.1

Source: Maritime and Port Authority of Singapore

Chart 4040 [*previous update 6700/08*] WGS84 DATUM

Insert		Q(6)+LFl.15s	1° 14'.15N., 103° 46'.47E.
Substitute		Q(6)+LFl.15s4m6M (collapsed) for	
		Q(6)+LFl.15s4m6M	1° 14'.18N., 103° 46'.45E.

1209* SINGAPORE – Changi East – Eastern Bunkering A – Wreck.

Source: Maritime and Port Authority of Singapore

Chart 4041 [*previous update 7073/08*] WGS84 DATUM

Insert		Wk	1° 17'.76N., 104° 03'.60E.
--------	---	-----------	----------------------------

Chart 4042 [*previous update 5952/08*] WGS84 DATUM


Insert		Wk	1° 17'.76N., 104° 03'.60E.
--------	---	-----------	----------------------------

Chart 4043 [*previous update 6641/08*] WGS84 DATUM

Insert		Wk	1° 17'.76N., 104° 03'.60E.
--------	---	-----------	----------------------------

1210* SINGAPORE – Keppel Harbour – Keppel Terminal to Tanjong Pagar Terminal and Marina South Eastwards
- Buoy. Dredged depths. Obstruction.

Source: Maritime and Port Authority of Singapore

Chart 4037 [*previous update 6699/08*] WGS84 DATUM



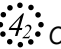
Insert		Fl(2)5s	1° 16'.251N., 103° 52'.256E.
Amend	dredged depth to, 11.0m (2008) , centred on:		1° 16'.048N., 103° 50'.300E. 1° 15'.730N., 103° 51'.009E.
Substitute		Obstn for 	1° 16'.195N., 103° 51'.354E.

Chart 4041 [*previous update 1209/09*] WGS84 DATUM

Insert		Fl(2)5s	1° 16'.25N., 103° 52'.26E.
--------	---	----------------	----------------------------

1211* SINGAPORE – Changi Ferry Terminal and Pulau Tekong Eastwards – Mooring buoys. Fishing stakes.

Source: Maritime and Port Authority of Singapore

Chart 4043 [*previous update 1209/09*] WGS84 DATUM

Insert			1° 22'.25N., 104° 00'.54E. 1° 22'.31N., 104° 00'.53E. 1° 22'.30N., 104° 00'.45E.
--------	---	--	--

V
**REPRINT OF ADMIRALTY NOTICES TO MARINERS
 FOR DUAL BADGED CHARTS**

Delete symbol, fishing stake, centred on:

1° 22'.25N., 104° 00'.45E.
 1° 23'.97N., 104° 05'.18E.
 1° 23'.93N., 104° 05'.23E.

Chart 4044 [*previous update 5322/08*] WGS84 DATUM

Insert 

1° 22'.25N., 104° 00'.54E.
 1° 22'.31N., 104° 00'.53E.
 1° 22'.30N., 104° 00'.45E.
 1° 22'.25N., 104° 00'.45E.

Updated to Admiralty Notices to Mariners Edition No. 13 of 2009 dated 26 March 2009.

SINGAPORE ELECTRONIC NAVIGATIONAL CHARTS (ENC) DISTRIBUTORS
Please approach any of the appointed distributors to purchase the Singapore ENC.

CONTACT PERSON/ DESIGNATION	ADDRESS	TELEPHONE/FAX NO./EMAIL/WEBSITE
Mr Chong Chee Meng General Manager	DPM (Singapore) Pte Ltd 1 Maritime Square, #09-72 Harbour Front Centre, Singapore 099253	Tel. No.: +65 6270 4060 Fax No.: +65 6276 3858 Email: sales@dpmsingapore.com.sg Website: http://www.dpmsingapore.com.sg
Mr Hamzah Akhbar MDS Branch Manager	Kelvin Hughes(S) Pte Ltd 8 Pandan Avenue #02-00, Singapore 609384	Tel. No.: +65 6545 9880 ext.24 Fax No.: +65 6545 8892 Email: hamzah.akhbar@khsing.com Website: http://www.kelvinhughes.co.uk
Mr Looi Keen Wai Regional Sales Manager	Maritime Information Systems (MARIS) 52, Telok Blangah Road #01-06, Telok Blangah Centre, Singapore 058809	Tel. No.: +65 6276 1472 Fax No.: +65 6276 1473 Email: support@maris.sg Website: http://www.maris.no
Ms Kathrine Bjaroy Marketing Coordinator	Maritime Information System AS (MARIS) Danholmen 25, 3128 Notteroy, Norway	Tel. No.: +47 33 30 42 50 Fax No.: +47 33 30 42 51 Email: roar.moe@maris.no Website: http://www.maris.no
Mr Dave Chow En Wai	Motion Smith 15 Jalan Kilang Barat #08-01/05 Frontech Centre Singapore 159357	Tel. No.: +65 6220 5098 Fax No.: +65 6225 4902 Email: sales@motsmith.com Website: http://www.motsmith.com
Mr Dominic Oliver	Transas Marine Pacific Pte Ltd 750C Chai Chee Road, #04-07, Technopark@Chai Chee, Singapore 469003	Tel. No.: +65 6443 3061 Fax No.: +65 6443 3025 Email: dominic@transas.com.sg Website: http://www.transas.com.sg
Mr Choy Kum Weng Director	Vector Services Pte Ltd 15 West Coast Highway, #02-14A Pasir Panjang Building Singapore 117861	Tel. No.: +65 6777 3602 Fax No.: +65 6777 9203 Email: kwchoy@pacific.net.sg
Mr George Arts President	Marine Press of Canada 640 Rue St-Paul Ouest, Suite 300 Montreal (QC) Canada, H3C1L9	Tel. No.: (514) 866-8342 Fax No.: (514) 866-9050 Email : sales@marinepress.com Website: http://www.marinepress.com
Mr Thomas Wilde Superintendent	HanseNautic GmbH Bade & Hornig, Eckardt & Messtorff Herrengarten 31 D-20459 Hamburg, Germany	Tel. No.: +49 40 374 811-32 Fax No.: +49 40 366 400 Email: wilde@hansenautic.de Website : http://www.HanseNautic.com
Ms Verena Borsos Manager	SevenCs AG + Co. KG Ruhrstrasse 90, D-22761 Hamburg, Germany	Tel. No.: +49 40 853 58 6940 Fax No.: +49 40 853 58 6949 Email: sales@chartworld.com Website : http://www.sevencs.com
Mr Keiji Shimizu General Manager	Japan Hydrographic Association Electronic Charts Division Daiichi Sogo Bldg, 6F 1-6-6, Hanedakuko, Ota-ku, Tokyo 144-0041, Japan	Tel. No.: +81 3 5708 7093 Fax No.: +81 3 5708 7094 Email: enc-support@jha.jp Website: http://www.jha.jp

SINGAPORE ELECTRONIC NAVIGATIONAL CHARTS (ENC) DISTRIBUTORS

Please approach any of the appointed distributors to purchase the Singapore ENC.

CONTACT PERSON/ DESIGNATION	ADDRESS	TELEPHONE/FAX NO./EMAIL/WEBSITE
Mr Jester-Kim Foreign Business Department Manager	E_MLX Co. Ltd Ssangyong Research No.2 Lab Sinseong-Dong 100 Yusong-Gu, Daejoen 305-804, Korea (ROK)	Tel. No.: +82 42 865 1893 Fax No.: +82 42 865 1884 Email: Jester-kim@emlx.co.kr
Mr C G Kim Managing Director	Korean Ocean Development Co. Ltd 2ND Fl, Dongbang Bldg, 25-4, 4 Ga Jungang-Dong, Jung-Gu, Busan, South Korea	Tel. No.: +82 514 66 0760 Fax No.: +82 514 65 9345 Email: sales@chartkorea.com Website: http://www.chartkorea.com
Mr Kjell Nodland	Jeppesen Norway A/S P.O Box 212 , N-4379 Egersund, Norway	Tel No.: +47 514 64 700 Fax No: +47 514 64 701 Email: enc@c-map.no Website : http://www.c-map.no
Ms Eva Hegland Sales, order and distributor support.	PRIMAR STAVANGER Lervigsveien 36, P.O Box 60, N-4001 Stavanger, Norway	Tel. No.: +47 51 93 9500 Fax No.: +47 51 93 9501 Email: sales@primar.org Website : http://www.primar-stavanger.org
Mrs Christine Trickett Product Manager	United Kingdom Hydrographic Office Admiralty Way, Taunton, Somerset TA1 2DN United Kingdom	Tel. No.: +44 (0)1823 337900 Fax No.: +44 (0)1823 284077 Emails: vargroup@ukho.gov.uk & christine.trickett@ukho.gov.uk Website: http://www.ukho.gov.uk

Agents for the Maritime and Port Authority of Singapore Publications

Agent's name : **DPM (Singapore) Pte Ltd**
Address : 1 Maritime Square #09-72, HarbourFront Centre,
Singapore 099253
Telephone : (65) 6270 4060
Fax No. : (65) 6276 3858
E-mail : sales@dpmsingapore.com.sg
Internet Web Site : <http://www.dpmsingapore.com.sg>

Agent's name : **E.W. Liner Charts & Publications Pte Ltd**
Address : 102F, Pasir Panjang Road, #08-01, Citilink Warehouse Complex,
Singapore 118530
Telephone : (65) 6323 0773
Fax No. : (65) 6323 0775
E-mail : ewliner@singnet.com.sg
Internet Web Site : <http://www.ewliner.com>

Agent's name : **Motion Smith**
Address : 15 Jalan Kilang Barat
#08-01/05 Frontech Centre,
Singapore 159357
Telephone : (65) 6220 5098
(After office hours: 8163 9993)
Fax No. : (65) 6225 4902
E-mail : sales@motsmith.com
Internet Web Site : <http://www.motsmith.com>

HYDROGRAPHIC NOTE - Instructions

1. Mariners are requested to notify the Chief Hydrographer, Maritime and Port Authority of Singapore, when new or suspected dangers to navigation are discovered, changes are observed in aids to navigation or where corrections to nautical publications may be necessary. Reports, which cannot be confirmed or are lacking in certain details should not be withheld.
2. Any ambiguities of time, positioning and depth should be stressed and any firm expectation of being able to check the information provided on a following voyage should be mentioned.
3. Mariners using satellite position fixing systems, eg. GPS, should provide details of equipment and datum used (where applicable). Where bearings (true or magnetic) are taken visually or by radar to fix a position, it should include more than two objects in order to provide a check on its accuracy. A position may also be defined by bearing and distance from a conspicuous object eg. beacon, lighthouse etc.
4. The note should include a tracing or a digital image of the chart used and the details should be clearly marked.
5. Echo sounders frequently register greater depths than the advertised maximum depth for the equipment, eg. a trace appearing at 50 metres may be in fact be 550 metres or even 1050 metres for equipment whose maximum depth is 500 metres. Erroneous depths caused by 2nd transmission error can usually be recognised by the following:
 - (a) the tracing being weaker than normal for the depth registered,
 - (b) the trace appearing to pass through the transmission line,
 - (c) the feathery nature of the trace.
6. An acknowledgement of receipt will be sent. When a Notice to Mariners is issued, the sender's vessel or name is quoted as the source unless the same information is also received in foreign Notices to Mariners.
7. Reports of shoals, uncharted dangers and defects in aids to navigation may also be made to the appropriate Singapore Port Operations Control Station on VHF Channels 10, 12, 14, 68 or 73.

HYDROGRAPHIC NOTE

To:

Chief Hydrographer
Hydrographic Department
Maritime and Port Authority of Singapore
460 Alexandra Road PSA Building #20-00
Singapore 119963

Tel : (65) 6375 1227
Fax : (65) 6278 7646
Email : hydrographic@mpa.gov.sg

Sender's Contact Details :

Date :

Name of Vessel :

Address of Sender :

Tel : Fax :

Email :

Nature of Observation :

General Location :

Subject :

Position : Lat. Long.

Charts Used :

Date & Time of Observation :

Details :

.....

.....

Attachment :

Equipment Used :

Type of Position Fixing : GPS / DGPS Others :

Type of Echo Sounder :

Name and Signature :

Ship's/Company's stamp :