



## SINGAPOREAN NOTICES TO MARINERS

SECTION	CONTENT	Page
I	Index of Charts & Publications	64
II	New Publications	69
	Notices to Mariners and Chart Corrections	71
	Temporary and Preliminary Notices	73
III	Navigational Information	74
	Amendments to Publications	75
IV	Reprint of Radio Navigational Warnings	76
V	Reprint of Admiralty Notices to Mariners for Dual Badged Charts	77

**The monthly Notices to Mariners contain corrective information affecting charts published by the Hydrographic Department, Maritime and Port Authority of Singapore. The information contained in these Notices should be updated on the charts affected. Notices under Section II apply only to the particular Singaporean Chart(s) indicated.**

Mariners are requested to notify the Chief Hydrographer, Maritime and Port Authority of Singapore, immediately on the discovery of new dangers or suspected dangers to navigation and of changes or defects in aids to navigation. See Hydrographic Note on back page.

The monthly Singaporean Notices to Mariners can be accessed directly from the MPA website:  
[http://www.mpa.gov.sg/sites/port\\_and\\_shipping/circulars\\_and\\_notices/singapore\\_notices\\_to\\_mariners\(ntm\).page](http://www.mpa.gov.sg/sites/port_and_shipping/circulars_and_notices/singapore_notices_to_mariners(ntm).page)

This service is offered free of charge.

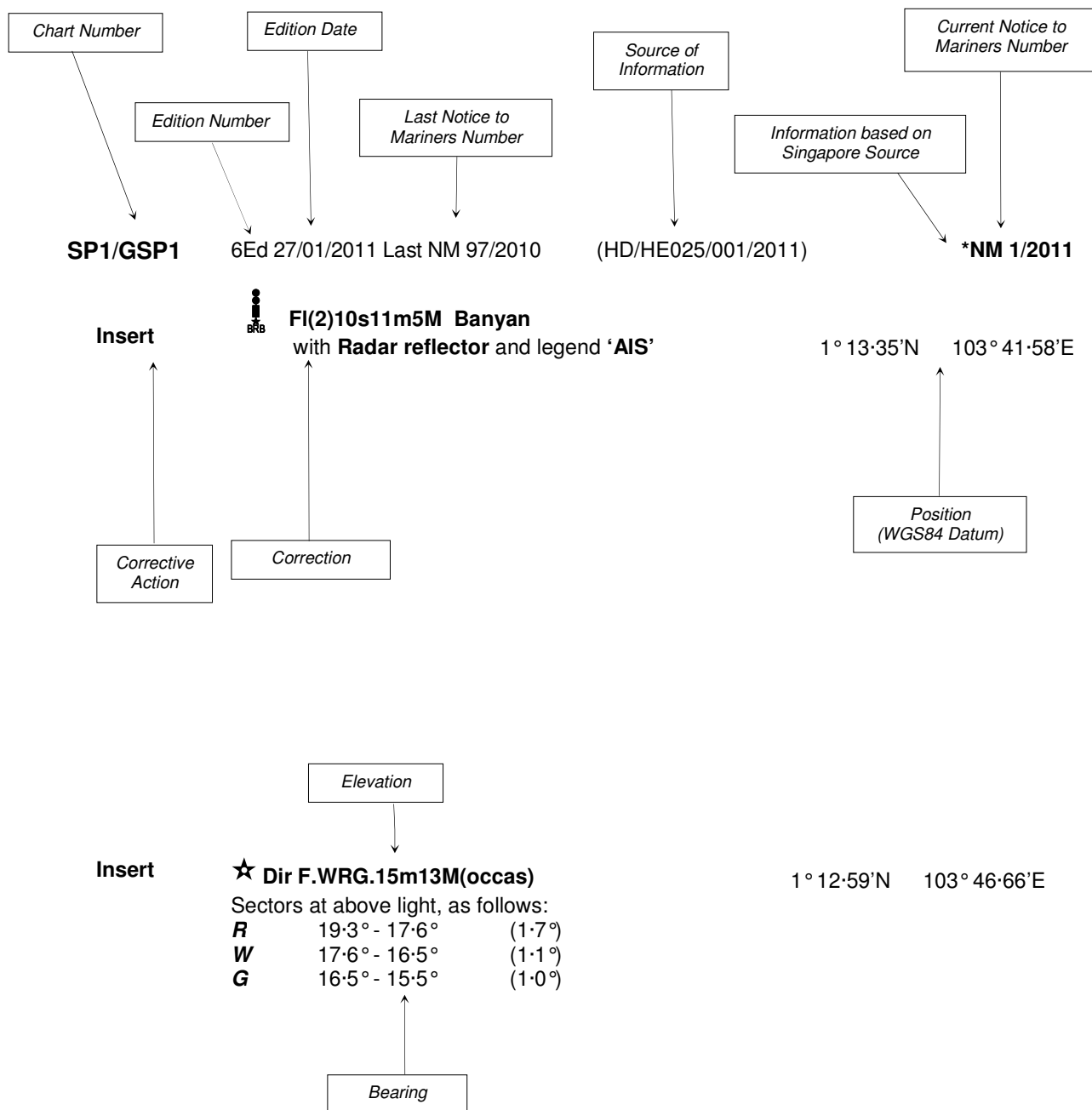
The Chief Hydrographer of  
Maritime and Port Authority of Singapore  
wishes all users of Singaporean and Dual Badged  
Charts

**A BLESSED GOOD FRIDAY**

Hydrographic Department  
Maritime and Port Authority of Singapore  
460 Alexandra Road  
PSA Building #20-00  
Singapore 119963  
Tel: (65) 6375 1227  
Fax: (65) 6278 7646

## EXPLANATION OF FORMAT

The elements of a typical chart correction are explained below.



**Notes:**

- a) Notice to Mariners number followed by:  
**T** indicates a Temporary Notice (eg. **\*NM 2T/2011**).  
**P** indicates a Preliminary Notice (eg. **\*NM 3P/2011**).
- b) Bearings are true reckoned clockwise from 000° to 359°; those relating to lights are from seaward.
- c) Heights and elevations are above Mean High Water Springs.

I  
INDEX OF CHARTS AND PUBLICATIONS

INDEX OF AFFECTED CHARTS

DESCRIPTION	NOTICE NO.	PAGE NO.
Index of Singaporean Charts	-	66
Index of Dual Badged Charts	-	67
Index of Singapore Electronic Navigational Chart (ENC)	-	68
New Edition Dual Badged Charts	-	69, 70
Singaporean Chart SP1/GSP1	31, *32, *33	71
Singaporean Chart 200	34, 35	71
Singaporean Chart 202	31, *32	71
Singaporean 500	31	71
Singaporean 501	31, *32	71, 72
Temporary and Preliminary Notices	-	73
Port Marine Notices	*36	74
Singaporean Print-On-Demand (POD) Charts	*37	74
Amendments to Publications	*38	75
Reprint of Radio Navigational Warnings	-	76
Reprint of Admiralty Notices to Mariners for Dual Badged Charts	-	77, 78
Singapore Electronic Navigational Chart (ENC) Distributors	-	79
Chart Agents for the Maritime and Port Authority of Singapore Nautical Charts and Publications	-	80

\*Denotes information are based on Singaporean source.

I  
INDEX OF CHARTS AND PUBLICATIONS

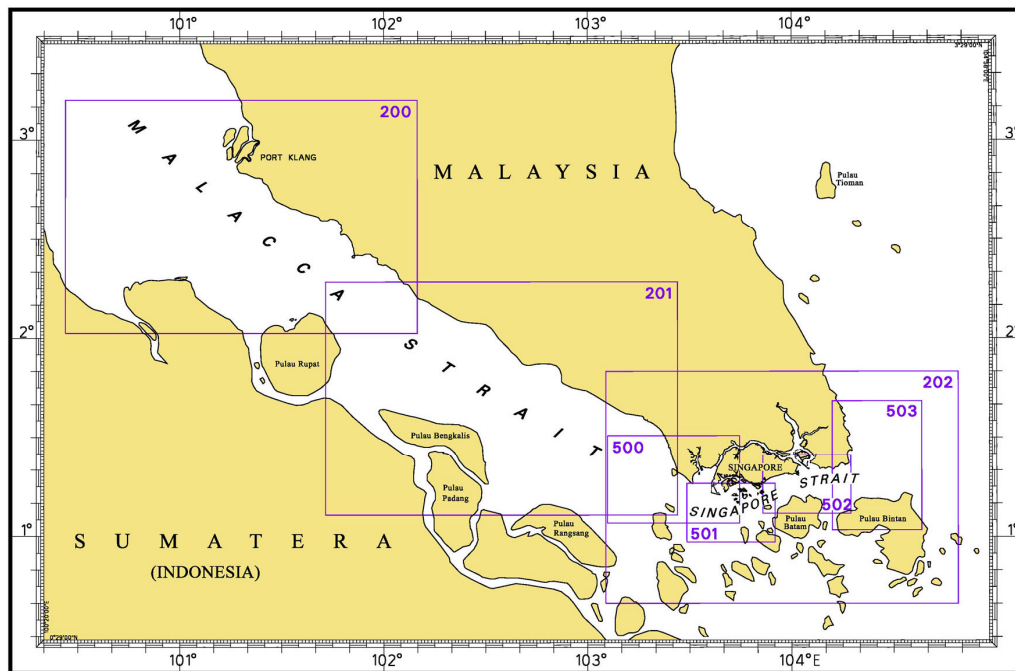
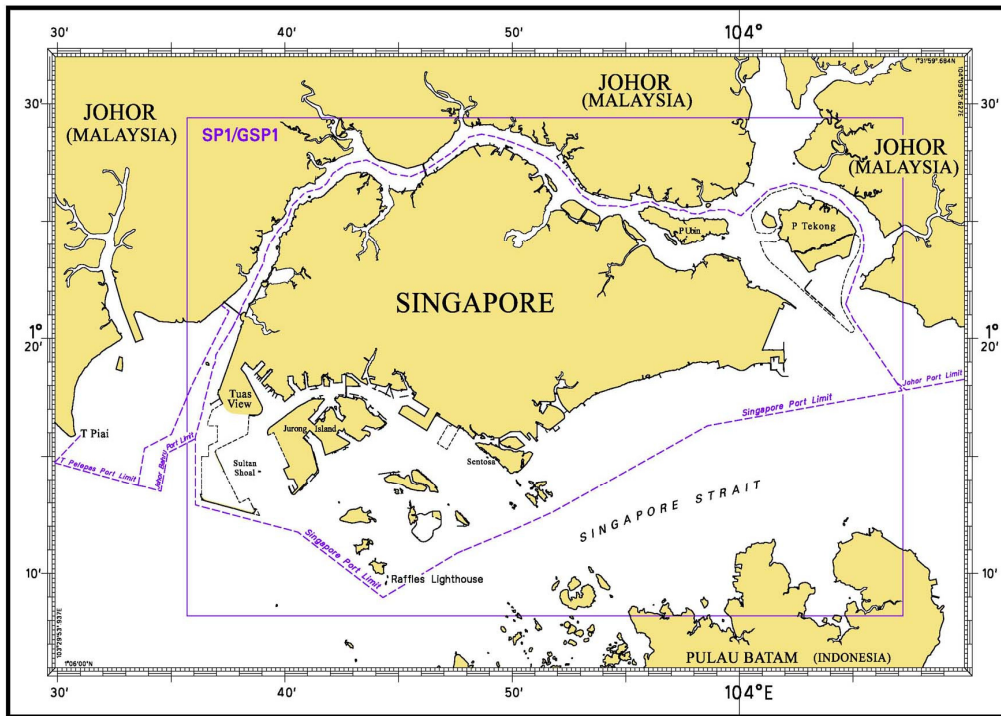
INDEX OF NOTICES

NOTICE NO.	DESCRIPTION	PAGE NO.
-	Index of Singaporean Charts	66
-	Index of Dual Badged Charts	67
-	Index of Singapore Electronic Navigational Chart (ENC)	68
-	New Edition Dual Badged Charts	69, 70
31, *32, *33	Singaporean Chart SP1/GSP1	71
34, 35	Singaporean Chart 200	71
31, *32	Singaporean Chart 202	71
31	Singaporean Chart 500	71
31, *32	Singaporean Chart 501	71, 72
-	Temporary and Preliminary Notices	73
*36	Port Marine Notices	74
*37	Singaporean Print-On-Demand (POD) Charts	74
*38	Amendments to Publications	75
-	Reprint of Radio Navigational Warnings	76
-	Reprint of Admiralty Notices to Mariners for Dual Badged Charts	77, 78
-	Singapore Electronic Navigational (ENC) Distributors	79
-	Chart Agents for the Maritime and Port Authority of Singapore Nautical Charts and Publications	80

\* Denotes information are based on Singaporean source.

# I INDEX OF CHARTS AND PUBLICATIONS

## INDEX OF SINGAPOREAN CHARTS

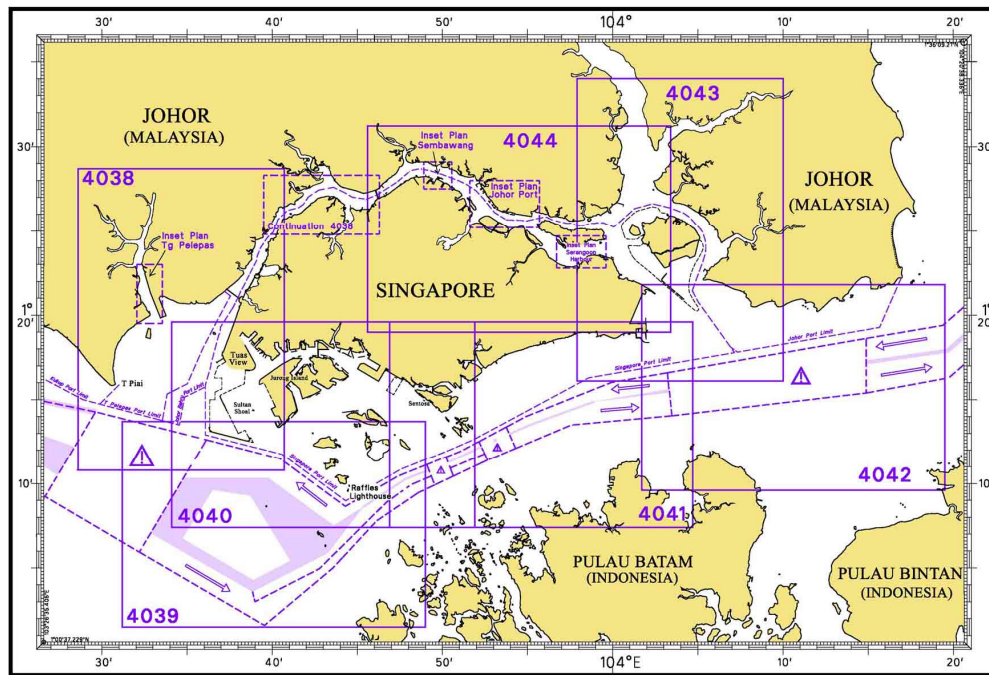
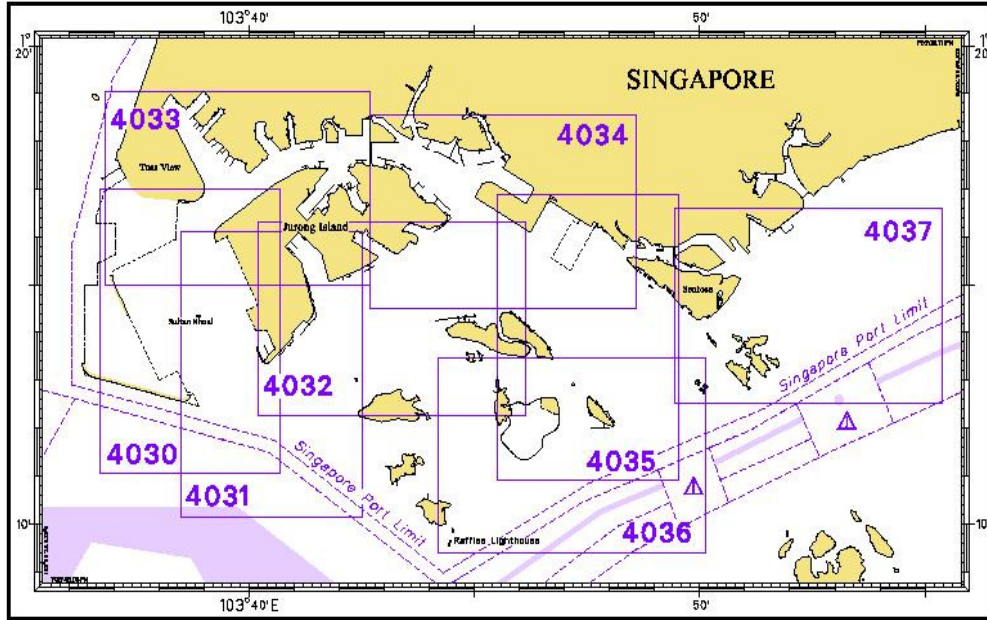


**Notes:**

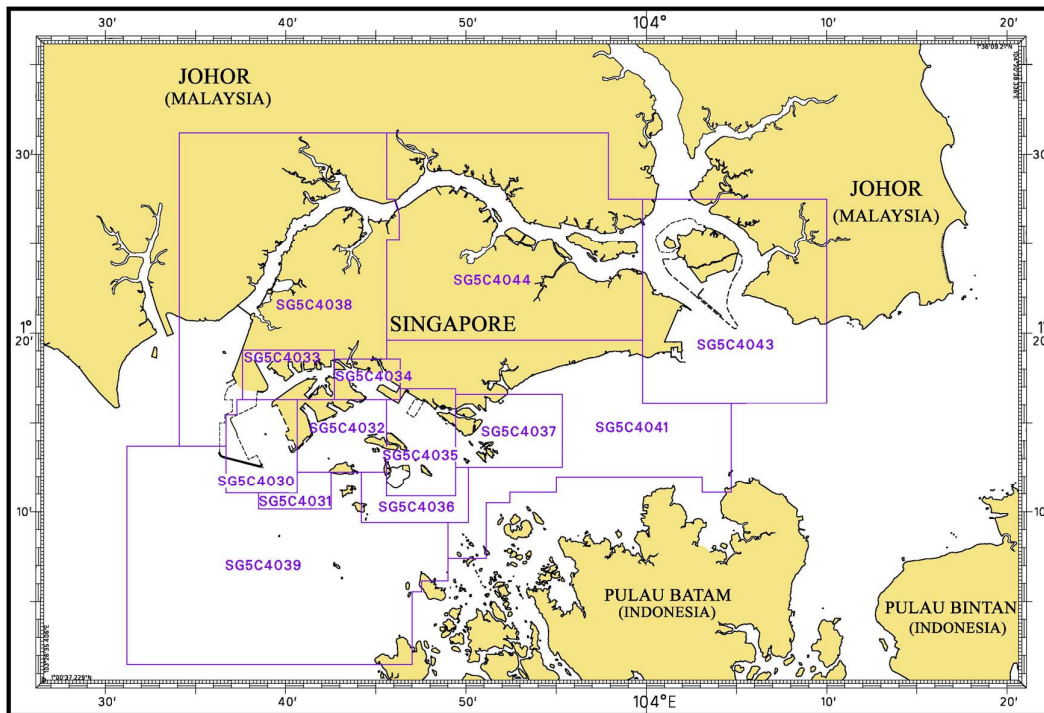
Updated SINGAPOREAN Charts are available through our Print-On-Demand (POD) Chart Service. For more information, refer to Section III – Navigational Information and these charts can be purchased from our authorised Chart Agents:  
DPM (Singapore) Pte Ltd, E.W. Liner Charts & Publications Pte Ltd and Motion Smith.

I  
INDEX OF CHARTS AND PUBLICATIONS

INDEX OF DUAL BADGED CHARTS



I  
**INDEX OF CHARTS AND PUBLICATIONS**  
**INDEX OF SINGAPORE ELECTRONIC NAVIGATIONAL CHART (ENC)**



**INDEX OF SINGAPORE ENC**

ENC Name	ENC Title	Latitude	Longitude
SG5C4030	West Jurong Anchorages and Temasek Fairway	1° 11-050'N 1° 16-300'N	103° 36-700'E 103° 40-640'E
SG5C4031	Western Approaches to Jurong Island	1° 10-150'N 1° 12-250'N	103° 38-500'E 103° 42-530'E
SG5C4032	Sinki Fairway	1° 12-250'N 1° 16-300'N	103° 40-640'E 103° 45-580'E
SG5C4033	Tuas Bay, West Jurong Channel and Pesek Basin	1° 16-300'N 1° 19-050'N	103° 37-600'E 103° 42-700'E
SG5C4034	East Jurong Channel, Pasir Panjang Terminal and West Keppel Fairway	1° 16-300'N 1° 18-550'N	103° 42-700'E 103° 46-356'E
SG5C4035	Western Anchorages, Jong Fairway and Cruise Bay	1° 10-900'N 1° 16-900'N	103° 45-580'E 103° 49-425'E
SG5C4036	Raffles Lighthouse to The Sisters	1° 09-400'N 1° 12-520'N	103° 44-200'E 103° 50-130'E
SG5C4037	Keppel Harbour, Tanjong Pagar Terminal and Approaches	1° 12-520'N 1° 16-590'N	103° 49-425'E 103° 55-340'E
SG5C4038	Johor Strait – Western Part	1° 13-700'N 1° 31-200'N	103° 34-100'E 103° 46-300'E
SG5C4039	Western Approaches to Main Strait	1° 01-500'N 1° 13-700'N	103° 31-200'E 103° 49-000'E
SG5C4041	Pulau Sebarok to Changi	1° 07-400'N 1° 19-600'N	103° 45-600'E 104° 04-700'E
SG5C4043	Kuala Johor and Sungai Johor	1° 16-100'N 1° 27-500'N	103° 59-800'E 104° 10-000'E
SG5C4044	Johor Strait – Eastern Part	1° 19-600'N 1° 31-200'N	103° 45-600'E 103° 59-800'E

## II NEW PUBLICATIONS

### NEW EDITION DUAL BADGED CHARTS PUBLISHED ON 14<sup>TH</sup> APRIL 2011

<b>Chart Number</b>	:	4034
<b>Title</b>	:	Port of Singapore – East Jurong Channel, Pasir Panjang Terminal and West Keppel Fairway
<b>Coverage</b>	:	Lat 01°14·50'N 01°18·55'N Long 103°42·70'E 103°48·60'E
<b>Scale</b>	:	1: 10 000
<b>Date Published</b>	:	14 <sup>th</sup> April 2011
<b>Size of Chart</b>	:	1094·3 X 746·3 mm
<b>Remarks</b>	:	This new edition includes updated surveys covering these areas : <ul style="list-style-type: none"> <li>• Pasir Panjang Basin</li> <li>• East Jurong Channel</li> <li>• Shell Tanker Jetty</li> <li>• Oiltanking Jetties</li> </ul>

The existing chart of the same number published on 30<sup>th</sup> September 2010 is superseded.

<b>Chart Number</b>	:	4035
<b>Title</b>	:	Port of Singapore – Western Anchorage, Jong Fairway and Cruise Bay
<b>Coverage</b>	:	Lat 01°10·90'N 01°16·90'N Long 103°45·50'E 103°49·54'E
<b>Scale</b>	:	1: 10 000
<b>Date Published</b>	:	14 <sup>th</sup> April 2011
<b>Size of Chart</b>	:	749·4 X 1105·7 mm
<b>Remarks</b>	:	This new edition includes updated surveys covering these areas : <ul style="list-style-type: none"> <li>• East Jurong Channel</li> <li>• Jong Fairway</li> <li>• Vicinity of collapsed Gusong Beacon</li> <li>• Portion of West Keppel Fairway</li> </ul>

The existing chart of the same number published on 30<sup>th</sup> September 2010 is superseded.

## II NEW PUBLICATIONS

### NEW EDITION DUAL BADGED CHARTS PUBLISHED ON 28<sup>TH</sup> APRIL 2011

<b>Chart Number</b>	:	4036
<b>Title</b>	:	Port of Singapore – Raffles Lighthouse To The Sisters
<b>Coverage</b>	:	Lat 01°09·40'N 01°13·47'N Long 103°44·20'E 103°50·13'E
<b>Scale</b>	:	1: 10 000
<b>Date Published</b>	:	28 <sup>th</sup> April 2011
<b>Size of Chart</b>	:	1100·0 X 750·1 mm
<b>Remarks</b>	:	This new edition includes updated surveys covering these areas : <ul style="list-style-type: none"> <li>• Jong Fairway</li> <li>• West of Pulau Sebarok</li> <li>• Semakau Dumping Ground</li> <li>• Shell SBM</li> <li>• Area between Terumbu Raya and Beting Bemban Besar</li> </ul>

The existing chart of the same number published on 21<sup>st</sup> May 2009 is superseded.





---


<b>Chart Number</b>	:	4037
<b>Title</b>	:	Port of Singapore – Keppel Harbour – Tanjong Pagar Terminal And Approaches
<b>Coverage</b>	:	Lat 01°12·52'N 01°16·59'N Long 103°49·40'E 103°55·34'E
<b>Scale</b>	:	1: 10 000
<b>Date Published</b>	:	28 <sup>h</sup> April 2011
<b>Size of Chart</b>	:	1101·8 X 750·1 mm
<b>Remarks</b>	:	This new edition includes updated surveys covering these areas : <ul style="list-style-type: none"> <li>• East Keppel Fairway</li> <li>• Eastern Anchorages</li> <li>• Buran Channel</li> <li>• Sisters Fairway</li> <li>• Keppel Harbour</li> <li>• Selat Sengkir</li> <li>• West of Pulau Sakijang Bendera</li> <li>• South of Marina South</li> </ul>


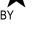

The existing chart of the same number published on 21<sup>st</sup> May 2009 is superseded.



---

**II**  
**NOTICES TO MARINERS AND CHART CORRECTIONS**




<b>SP1/GSP1</b>	6 Ed 27/1/11 Last NM 25/2011	(Indonesian NM No. 7/67/2011)	<b>NM 31/2011</b>
<b>Insert</b>	 <b>Q.12m13M N Nipa</b>		1° 10·13'N 103° 39·77'E
<b>Delete</b>	 Q.12m11M N Nipa and symbol of radar reflector		1° 10·26'N 103° 39·75'E
		(HD/Job No. 117C/2010)	<b>*NM 32/2011</b>
<b>Delete</b>	 Fl(3)G.10s6m4M Gusong (collapsed)		1° 11·12'N 103° 47·65'E
		(HD/HY/H00102610)	<b>*NM 33/2011</b>
<b>Delete</b>	 Wk		1° 15·91'N 103° 45·65'E

<b>200</b>	2 Ed 30/11/05 Last Nm 89/2010	(Peninsular Malaysia Marine Dept. Notice No. 12/2011)	<b>NM 34/2011</b>
<b>Insert</b>	 <b>Fl(4)15s8m5M</b>		2° 27·79'N 101° 50·69'E
		(Peninsular Malaysia Marine Dept. Notice No. 19/2011)	<b>NM 35/2011</b>
<b>Amend</b>	light character <b>Fl.G.5s</b> for Iso.G.5s		2° 52·61'N 101° 15·71'E

<b>202</b>	6 Ed 24/9/09 Last NM 26/2011	(Indonesian NM No. 7/67/2011)	<b>NM 31/2011</b>
<b>Insert</b>	 <b>Q.13M</b>		1° 10·13'N 103° 39·77'E
<b>Delete</b>	 Q.11M and symbol of radar reflector		1° 10·26'N 103° 39·75'E
		(HD/Job No. 117C/2010)	<b>*NM 32/2011</b>
<b>Delete</b>	 Fl(3)G.10s4M (collapsed)		1° 11·12'N 103° 47·65'E

<b>500</b>	6 Ed 7/10/10 Last NM 17/2011	(Indonesian NM No. 7/67/2011)	<b>NM 31/2011</b>
<b>Insert</b>	 <b>Q.12m13M N Nipa</b>		1° 10·13'N 103° 39·77'E
<b>Delete</b>	 Q.12m11M and symbol of radar reflector		1° 10·26'N 103° 39·75'E

**II**  
**NOTICES TO MARINERS AND CHART CORRECTIONS**

<b>501</b>	5 Ed 24/9/09 Last NM 25/2011	(Indonesian NM No. 7/67/2011)	<b>NM 31/2011</b>
<b>Insert</b>	 <b>Q.12m13M N Nipa</b>		1° 10·13'N 103° 39·77'E
<b>Delete</b>	 Q.12m11M and symbol of radar reflector		1° 10·26'N 103° 39·75'E
		(Job No. 117C/2010)	<b>*NM 32/2011</b>
<b>Delete</b>	 Fl(3)G.10s6m4M Gusong (collapsed)		1° 11·12'N 103° 47·65'E

---

**II**  
**TEMPORARY AND PRELIMINARY NOTICES**

Nil

### III NAVIGATIONAL INFORMATION

#### \*(NM 36/2011) PORT MARINE NOTICES

The following PMNs have been shortlisted, as they would be of particular interest to mariners.

These notices can be accessed directly from MPA website:

[http://www.mpa.gov.sg/sites/port\\_and\\_shipping/circulars\\_and\\_notices/port\\_marine\\_notices.page](http://www.mpa.gov.sg/sites/port_and_shipping/circulars_and_notices/port_marine_notices.page)

PMN No.	Subject
17/2011	Construction of International Cruise Terminal.
19/2011	Construction works at Sembawang Shipyard.
22/2011	Dredging works East of Terumbu Buran.
23/2011	Dredging and dumping at Pasir Panjang Terminal Project.
25/2011	Dredging works at East Keppel Fairway.

#### \*(NM 37/2011) SINGAPOREAN PRINT-ON-DEMAND (POD) CHARTS

Print-On-Demand (POD) Charts are the most up-to-date paper nautical charts printed for navigational use. These nautical charts are produced in accordance with the International Hydrographic Organisation (IHO) charting specifications. These official nautical charts are continually updated to the latest Notices to Mariners before they are printed and sold to users.

These POD Charts include SP1/GSP1, 200, 201, 202, 500, 501, 502 and 503.

#### BENEFITS TO OUR CUSTOMERS

##### **Convenience**

Customers need not make numerous hand corrections to the nautical charts before use. In addition the updated POD Charts are more accurate and reliable than offset printed charts with hand corrections.

##### **Clarity**

Clarity in the presentation of updated information as compared to lithographic printed charts, where in some cases there are several overlapping corrections over existing information.

##### **Coverage**

The POD Charts cover the Malacca and Singapore Straits, from One Fathom Bank to Horsburgh Lighthouse.

**III**  
**AMENDMENTS TO PUBLICATIONS**

**\*(NM 38/2011) UPDATING OF PUBLICATION "SINGAPORE PORT INFORMATION 2010/2011"**

1. Page 116

**CHARACTERISTICS OF AIDS TO NAVIGATION  
BANYAN BASIN**

Delete the following:

<b>Name of Beacon/Buoy</b>	<b>Position Lat. N Long. E Deg Min</b>	<b>Structure Colour &amp; Shape</b>	<b>Light Characteristics</b>	<b>Owner</b>
BB8 Buoy	01 15·051 103 41·734	Green conical	Fl.G.4s	-

Source: HD/HE025/14/2011

2. Page 123

**CHARACTERISTICS OF AIDS TO NAVIGATION  
APPROACHES TO SHELL SBM**

Delete the following:

<b>Name of Beacon/Buoy</b>	<b>Position Lat. N Long. E Deg Min</b>	<b>Structure Colour &amp; Shape</b>	<b>Light Characteristics</b>	<b>Owner</b>
Gusong Beacon (collapsed)	01 11·119 103 47·654	Green cone on green tubular tower pivoted at base. Buoyant beacon	Fl(3)G.10s6m4M	Shell Eastern Petroleum

Source: HD/Job No: 117C/2010

---

**IV**  
**REPRINT OF RADIO NAVIGATIONAL WARNINGS**

TT173

VESSELS IN EAST JOHOR STRAIT ARE ADVISED TO NAVIGATE WITH CAUTION WHEN NEAR THE PROJECT AREAS OFF PULAU TEKONG, CHANGI AND MALANG PAPAN AS SHALLOW WATER AREAS EXIST. VESSELS ARE ADVISED TO KEEP LOOKOUT FOR TUGS AND BARGES NAVIGATING NEAR THE PROJECT AREAS AND PASSENGER FERRIES CROSSING BETWEEN CHANGI AND PULAU TEKONG AND VICINITY OF PASIR GUDANG.

TT619

DREDGER QUEEN OF PENTA OCEAN IS CONDUCTING DREDGING OPERATIONS IN COORDINATES:  
01° 14·890' N 103° 58·120' E  
01° 16·210' N 104° 01·630' E  
01° 16·090' N 104° 01·670' E  
01° 14·680' N 103° 58·200' E  
VESSELS ARE TO KEEP CLEAR.

TT753

A SMALL WOODEN CARGO BOAT 10M IN LENGTH SUNK AT 01° 15·73'N 103° 32·10'E.

TT884

SALVAGE OPERATIONS UNDERWAY IN 01° 13·40'N 103° 57·75'E. ALL SHIPS ARE REQUESTED TO GIVE A WIDE BERTH OF AT LEAST 5 CABLES WHEN PASSING THE AREA.

TT908

DANGER TO NAVIGATION (AMENDED ON 071700Z)  
2 TUGBOATS REPORTED SUNK IN POSITION 01° 19·63'N 104° 19·28'E. ALL VESSELS ARE TO NAVIGATE WITH CAUTION.

TT931

VESSELS NAVIGATING IN THE SINGAPORE STRAIT ARE REQUESTED NOT TO DIRECT THEIR HIGH INTENSITY SEARCHLIGHTS SKYWARD IN THE VICINITY OF CHANGI AIRPORT TO AVOID DISRUPTION TO AIR NAVIGATION.

TT941

- 1) C/S ASEAN RESTORER WILL CARRY OUT SUBMARINE CABLE REPAIR OPERATIONS IN THE VICINITY OF:
  - a) LAT 01° 13.04'N LONG 104° 09.53'E
  - b) LAT 01° 12.06'N LONG 104° 09.48'E
  - c) LAT 01° 12.29'N LONG 104° 07.46'E
  - d) LAT 01° 13.25'N LONG 104° 07.63'E
- 2) CABLE REPAIR OPERATION WILL BE CARRIED OUT FROM  
25th March 2011 - UFN
- 3) C/S ASEAN RESTORER IS RESTRICTED IN HER ABILITY TO MANOEUVRE  
ALL VESSELS IN THE VICINITY ARE REQUESTED TO GIVE A WIDE BERTH  
OF 1 NAUTICAL MILE WHEN APPROACHING AND NAVIGATE WITH CAUTION.

SR154

AN UNIDENTIFIED VESSEL REPORTED SUNK SOUTH WEST OF HORSBURGH AT 01° 16·12'N 104° 21·50'E.

ISSUED BY SINGAPORE PORT OPERATIONS CONTROL CENTRE (as at 27<sup>th</sup> March 2011)

V  
**REPRINT OF ADMIRALTY NOTICES TO MARINERS  
 FOR DUAL BADGED CHARTS**

These notices can be accessed directly from UKHO Website:

<http://www.ukho.gov.uk/ProductsandServices/MaritimeSafety/Pages/NMPublic.aspx>

**959\* SINGAPORE – Sentosa Eastwards – Outer Shoal, Pulau Sakijang Pelepah and Eastern Fairway North-eastwards and Jurong Island Southwards – Automatic Identification Systems. Obstruction. Depth. Buoyage.**

ALRS Vol.2, 2010/11:(4/11)

Source: Maritime and Port Authority of Singapore

**Chart 4030** [ *previous update 5836/10* ] WGS84 DATUM

Move		<b>FI(2)Y.4s Helios 1</b> , from:	1° 14'·010N., 103° 40'·180E.
		to:	1° 13'·980N., 103° 40'·120E.
		<b>FI(2)Y.6s Helios 2</b> , from:	1° 14'·010N., 103° 40'·370E.
		to:	1° 13'·980N., 103° 40'·380E.


**Chart 4031** [ *previous update 573/11* ] WGS84 DATUM

Move		<b>FI(2)Y.4s Helios 1</b> , from:	1° 14'·010N., 103° 40'·180E.
		to:	1° 13'·980N., 103° 40'·120E.
		<b>FI(2)Y.6s Helios 2</b> , from:	1° 14'·010N., 103° 40'·370E.
		to:	1° 13'·980N., 103° 40'·380E.



**Chart 4037** [ *previous update 573/11* ] WGS84 DATUM

Insert	Automatic Identification System, AIS, at light-beacon	to:	1° 15'·019N., 103° 51'·811E.
			1° 13'·305N., 103° 51'·275E.


**Chart 4038** [ *previous update 361/11* ] WGS84 DATUM

Move		<b>FI(2)Y.4s Helios 1</b> , from:	1° 14'·01N., 103° 40'·18E.
		to:	1° 13'·98N., 103° 40'·12E.
		<b>FI(2)Y.6s Helios 2</b> , from:	1° 14'·01N., 103° 40'·37E.
		to:	1° 13'·98N., 103° 40'·38E.

**Chart 4040** [ *previous update 573/11* ] WGS84 DATUM

Insert	Automatic Identification System, AIS, at light-beacon	to:	1° 15'·02N., 103° 51'·81E.
			1° 13'·31N., 103° 51'·28E.
Move		<b>FI(2)Y.4s Helios 1</b> , from:	1° 14'·01N., 103° 40'·18E.
		to:	1° 13'·98N., 103° 40'·12E.
		<b>FI(2)Y.6s Helios 2</b> , from:	1° 14'·01N., 103° 40'·37E.
		to:	1° 13'·98N., 103° 40'·38E.

**Chart 4041** [ *previous update 383/11* ] WGS84 DATUM

Insert	Automatic Identification System, AIS, at light-beacon	to:	1° 15'·02N., 103° 51'·81E.
			1° 13'·31N., 103° 51'·28E.
	 <b>Obstn</b>		1° 17'·96N., 103° 56'·19E.

V  
REPRINT OF ADMIRALTY NOTICES TO MARINERS  
FOR DUAL BADGED CHARTS

**1074 SINGAPORE – Tuas View Southwards – Light.**

Light List Vol. F,2010/11, 1684.4

Source: UKHO

Note: ***Certain copies only.***

**Chart 4033** [ *previous update 5836/10* ] WGS84 DATUM

Insert  **Fl.Y.2s5m TP2**

1° 16'·728N., 103° 38'·852E.

(  )

Updated to Admiralty Notices to Mariners Edition No. 13 of 2011 dated 31<sup>st</sup> March 2011.

**SINGAPORE ELECTRONIC NAVIGATIONAL CHART (ENC) DISTRIBUTORS**  
Please approach any of the appointed distributors to purchase the Singapore ENC.

<b>DISTRIBUTOR</b>	<b>ADDRESS</b>	<b>TELEPHONE/FAX NO./EMAIL/WEBSITE</b>
DPM (Singapore) Pte Ltd	1 Maritime Square, #09-72 HarbourFront Centre, Singapore 099253	Tel. No.: +65 6270 4060 Fax No.: +65 6276 3858 Email: sales@dpmsingapore.com.sg Website: http://www.dpmsingapore.com.sg
Motion Smith	15 Jalan Kilang Barat #08-01/05 Frontech Centre Singapore 159357	Tel. No.: +65 6220 5098 Fax No.: +65 6225 4902 Email: sales@motsmith.com Website: http://www.motsmith.com
Transas Marine Pacific Pte Ltd	Cyber Centre 16 & 18 Jalan Kilang Barat Singapore 159358	Tel. No.: +65 6271 0200 Fax No.: +65 6271 7300 Email: dominic@transas.com.sg Website: http://www.transas.com.sg
Vector Services Pte Ltd	15 West Coast Highway, #02-14A Pasir Panjang Building Singapore 117861	Tel. No.: +65 6777 3602 Fax No.: +65 6777 9203 Email: kwchoy@pacific.net.sg
ChartWorld GmbH	Ruhrstrasse 90, D-22761 Hamburg, Germany	Tel. No.: +49 40 853 58 6942 Fax No.: +49 40 853 58 6949 Email: sales@chartworld.com Website : http://www.chartworld.com
Japan Hydrographic Association Electronic Charts Division	Daiichi Sogo Bldg, 6F 1-6-6, Hanedakuko, Ota-ku, Tokyo 144-0041, Japan	Tel. No.: +81 3 5708 7093 Fax No.: +81 3 5708 7094 Email: shimizu-6kj@jha.jp Website: http://www.jha.or.jp/en/jha/
Jeppesen Norway A/S	P.O Box 212 , N-4371 Egersund, Norway	Tel No.: +47 514 64 700 Fax No: +47 514 64 701 Email: license.marine@jeppesen.com Website : http://www.jeppesen.com
PRIMAR STAVANGER	Lervigsveien 36, P.O Box 60, N-4001 Stavanger, Norway	Tel. No.: +47 51 93 9500 Fax No.: +47 51 93 9501 Email: sales@ecc.no Website : http://www.primar.no
United Kingdom Hydrographic Office	Admiralty Way, Taunton, Somerset TA1 2DN United Kingdom	Tel. No.: +44 1823 337900 Fax No.: +44 1823 284077 Emails: ENC.SalesReports@ukho.gov.uk Website: http://www.ukho.gov.uk

## Chart Agents for the Maritime and Port Authority of Singapore Nautical Charts and Publications

**Agent's Name** : **DPM (Singapore) Pte Ltd**  
**Address** : 1 Maritime Square #09-72, HarbourFront Centre,  
Singapore 099253  
**Telephone** : (65) 6270 4060  
**Fax No.** : (65) 6276 3858  
**E-mail** : sales@dpmsingapore.com.sg  
**Internet Web Site** : <http://www.dpmsingapore.com.sg>

**Agent's Name** : **E.W. Liner Charts & Publications Pte Ltd**  
**Address** : 102F, Pasir Panjang Road, #08-01, Citilink Warehouse Complex,  
Singapore 118530  
**Telephone** : (65) 6323 0773  
**Fax No.** : (65) 6323 0775  
**E-mail** : ewliner@singnet.com.sg  
**Internet Web Site** : <http://www.ewliner.com>

**Agent's Name** : **Motion Smith**  
**Address** : 15 Jalan Kilang Barat  
#08-01/05 Frontech Centre,  
Singapore 159357  
**Telephone** : (65) 6220 5098  
: (After office hours: (65) 8163 9993)  
**Fax No.** : (65) 6225 4902  
**E-mail** : sales@motsmith.com  
**Internet Web Site** : <http://www.motsmith.com>

---

## HYDROGRAPHIC NOTE - Instructions

1. Mariners are requested to notify the Chief Hydrographer, Maritime and Port Authority of Singapore, when new or suspected dangers to navigation are discovered, changes are observed in aids to navigation or where corrections to nautical publications may be necessary. Reports, which cannot be confirmed or are lacking in certain details should not be withheld.
2. Any ambiguities of time, positioning and depth should be stressed and any firm expectation of being able to check the information provided on a following voyage should be mentioned.
3. Mariners using satellite position fixing systems, eg. GPS, should provide details of equipment and datum used (where applicable). Where bearings (true or magnetic) are taken visually or by radar to fix a position, it should include more than two objects in order to provide a check on its accuracy. A position may also be defined by bearing and distance from a conspicuous object eg. beacon, lighthouse etc.
4. The note should include a tracing or a digital image of the chart used and the details should be clearly marked.
5. Echo sounders frequently register greater depths than the advertised maximum depth for the equipment, eg. a trace appearing at 50 metres may be in fact be 550 metres or even 1050 metres for equipment whose maximum depth is 500 metres. Erroneous depths caused by 2nd transmission error can usually be recognised by the following:
  - (a) the tracing being weaker than normal for the depth registered,
  - (b) the trace appearing to pass through the transmission line,
  - (c) the feathery nature of the trace.
6. Upon receipt of a hydrographic note, a Notice to Mariners may be issued. The sender's vessel or name is quoted as the source unless the same information is also received in foreign Notices to Mariners.
7. Reports of shoals, uncharted dangers and defects in aids to navigation may also be made to the appropriate Singapore Port Operations Control Centre on VHF Channels 10, 12, 14, 68 or 73.

## HYDROGRAPHIC NOTE

To:

Chief Hydrographer  
Maritime and Port Authority of Singapore  
460 Alexandra Road PSA Building #20-00  
Singapore 119963

Tel : (65) 6375 1227  
Fax : (65) 6278 7646  
Email : [hydrographic@mpa.gov.sg](mailto:hydrographic@mpa.gov.sg)

### **Sender's Contact Details** :

Date : .....

Name of Vessel : .....

Address of Sender : .....

Tel : ..... Fax : .....

Email : .....

### **Nature of Observation** :

General Location : .....

Subject : .....

Position : Lat. .... Long. ....

Charts Used : .....

Date & Time of Observation : .....

Details : .....

.....

.....

Attachment : .....

### **Equipment Used** :

Type of Position Fixing : ..... GPS / DGPS ..... Others : .....

Type of Echo Sounder : .....

Name and Signature : .....

Ship's/Company's Stamp : .....