



SINGAPOREAN NOTICES TO MARINERS

| SECTION | CONTENT | Page |
|---------|---|------|
| I | Index of Charts & Publications | 1 |
| II | New Publications | 6 |
| | Notices to Mariners and Chart Corrections | 14 |
| | Temporary and Preliminary Notices | 16 |
| III | Navigational Information | 24 |
| | Amendments to Publications | 25 |
| IV | Reprint of Radio Navigational Warnings | 27 |
| V | Extract of Admiralty Notices to Mariners for Dual Badged Charts | 28 |

The monthly Notices to Mariners contain corrective information affecting charts published by the Hydrographic Department, Maritime and Port Authority of Singapore. The information contained in these Notices should be updated on the charts affected. Notices under Section II apply only to the particular Singaporean Chart(s) indicated.

Mariners are requested to notify the Chief Hydrographer, Maritime and Port Authority of Singapore, immediately on the discovery of new dangers or suspected dangers to navigation and of changes or defects in aids to navigation. See Hydrographic Note on back page.

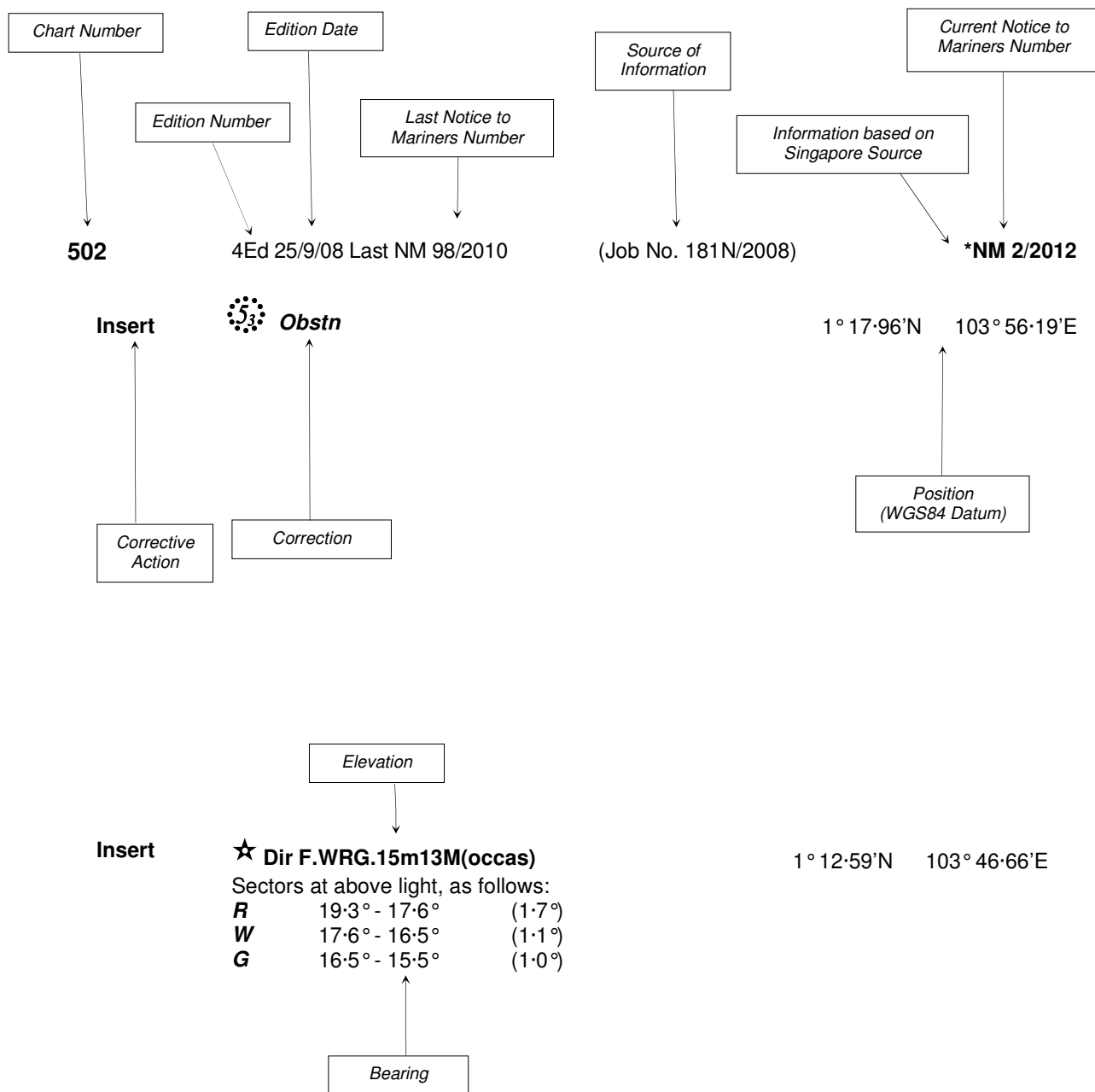
The monthly Singaporean Notices to Mariners can be accessed directly from the MPA website:
[http://www.mpa.gov.sg/sites/port_and_shipping/circulars_and_notices/singapore_notices_to_mariners\(ntm\).page](http://www.mpa.gov.sg/sites/port_and_shipping/circulars_and_notices/singapore_notices_to_mariners(ntm).page)

This service is offered free of charge.

Hydrographic Department
Maritime and Port Authority of Singapore
460 Alexandra Road
PSA Building #20-00
Singapore 119963
Tel: (65) 6375 1227
Fax: (65) 6278 7646

EXPLANATION OF FORMAT

The elements of a typical chart correction are explained below.



Notes:

- a) Notice to Mariners number followed by:
T indicates a Temporary Notice (eg. ***NM 3T/2012**).
P indicates a Preliminary Notice (eg. ***NM 4P/2012**).
- b) Bearings are true reckoned clockwise from 000° to 359°; those relating to lights are from seaward.
- c) Heights and elevations are above Mean High Water Springs.

I
INDEX OF CHARTS AND PUBLICATIONS

INDEX OF AFFECTED CHARTS

| DESCRIPTION | NOTICE NO. | PAGE NO. |
|--|--------------------|----------|
| Index of Singaporean Charts | - | 3 |
| Index of Dual Badged Charts | - | 4 |
| Index of Singapore Electronic Navigational Chart (ENC) | - | 5 |
| Singapore Port Information 2012/2013 | - | 6 |
| New Edition Singaporean Charts | - | 7 to 8 |
| New Edition Dual Badged Charts | - | 9 to 13 |
| Singaporean Chart GSP1, SP1 | *30, *31, *32 | 14 |
| Singaporean Chart 202 | 32, 34 | 14 |
| Singaporean Chart 500 | 33, 35 | 15 |
| Singaporean Chart 501 | 33, 35 | 15 |
| Singaporean Chart 502 | *30 | 15 |
| Temporary and Preliminary Notices | 36P, 37P, 38P, 39T | 16 to 23 |
| Port Marine Notices | *40 | 24 |
| Singaporean Print-On-Demand (POD) Charts | *41 | 24 |
| Amendments to Publications | *42 | 25, 26 |
| Reprint of Radio Navigational Warnings | - | 27 |
| Extract of Admiralty Notices to Mariners for Dual Badged Charts | - | 28 to 30 |
| Singapore Electronic Navigational Chart (ENC) Distributors | - | 31 |
| Chart Agents for the Maritime and Port Authority of Singapore Nautical Charts and Publications | - | 32 |

*Denotes information are based on Singaporean source.

I
INDEX OF CHARTS AND PUBLICATIONS

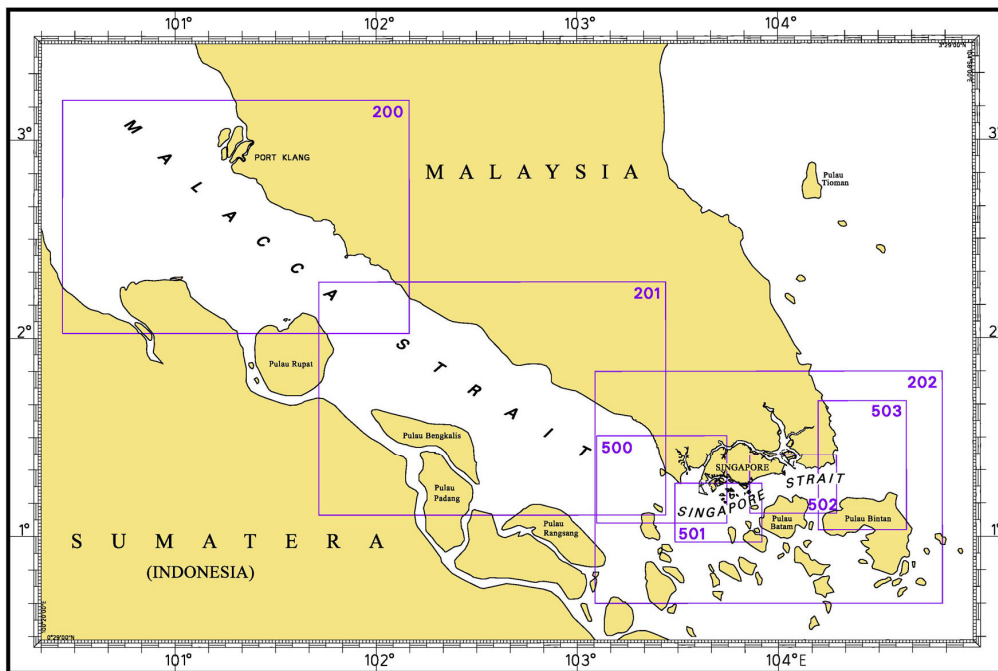
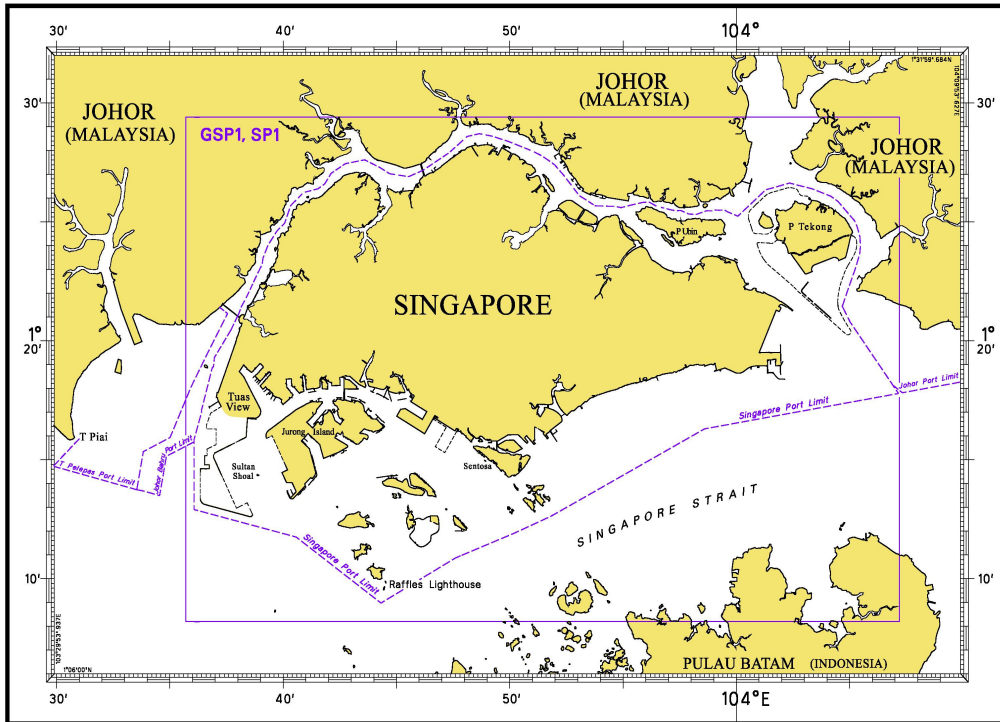
INDEX OF NOTICES

| NOTICE NO. | DESCRIPTION | PAGE NO. |
|--------------------|--|----------|
| - | Index of Singaporean Charts | 3 |
| - | Index of Dual Badged Charts | 4 |
| - | Index of Singapore Electronic Navigational Chart (ENC) | 5 |
| - | Singapore Port Information 2012/2013 | 6 |
| - | New Edition Singaporean Charts | 7 to 8 |
| - | New Edition Dual Badged Charts | 9 to 13 |
| *30, *31, *32 | Singaporean Chart GSP1, SP1 | 14 |
| 32, 34 | Singaporean Chart 202 | 14 |
| 33, 35 | Singaporean Chart 500 | 15 |
| 33, 35 | Singaporean Chart 501 | 15 |
| *30 | Singaporean Chart 502 | 15 |
| 36P, 37P, 38P, 39T | Temporary and Preliminary Notices | 16 to 23 |
| *40 | Port Marine Notices | 24 |
| *41 | Singaporean Print-On-Demand (POD) Charts | 24 |
| *42 | Amendments to Publications | 25, 26 |
| - | Reprint of Radio Navigational Warnings | 27 |
| - | Extract of Admiralty Notices to Mariners for Dual Badged Charts | 28 to 30 |
| - | Singapore Electronic Navigational Chart (ENC) Distributors | 31 |
| - | Chart Agents for the Maritime and Port Authority of Singapore Nautical Charts and Publications | 32 |

* Denotes information are based on Singaporean source.

I INDEX OF CHARTS AND PUBLICATIONS

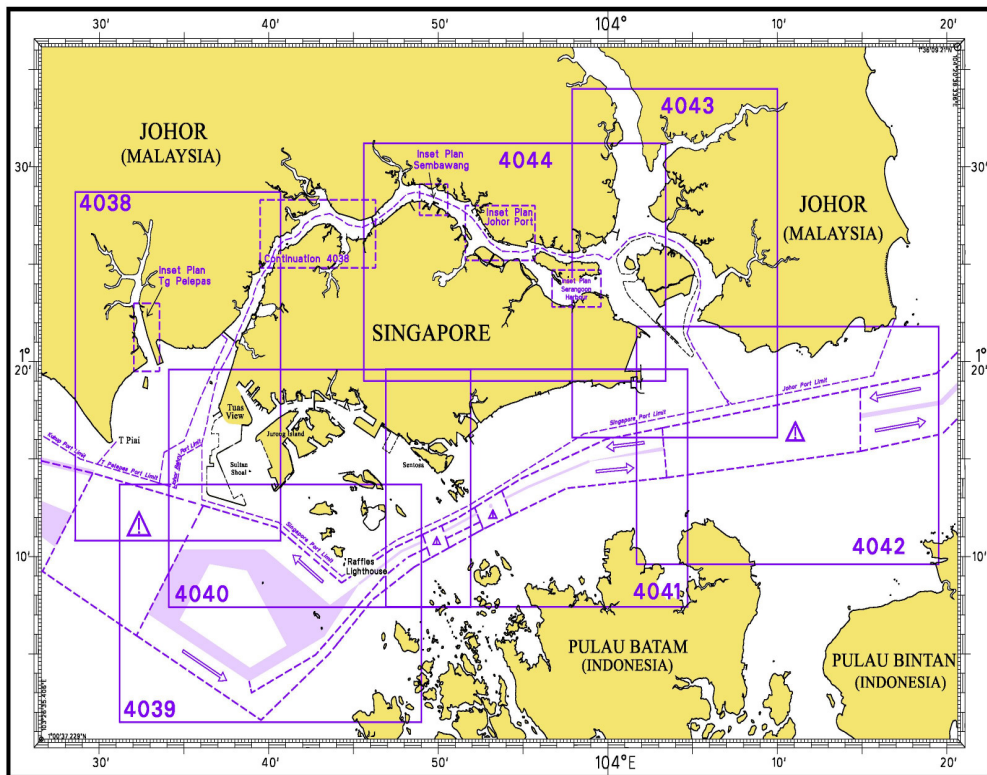
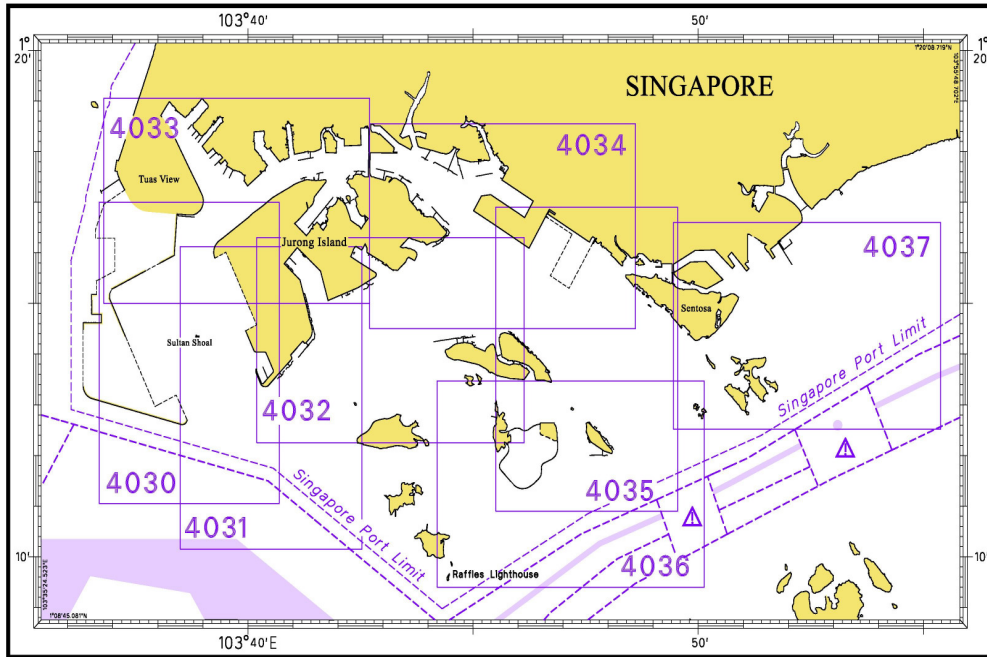
INDEX OF SINGAPOREAN CHARTS



Notes:
Updated SINGAPOREAN Charts are available through our Print-On-Demand (POD) Chart Service. For more information, refer to Section III – Navigational Information. These charts can be purchased from our authorised Chart Agents.

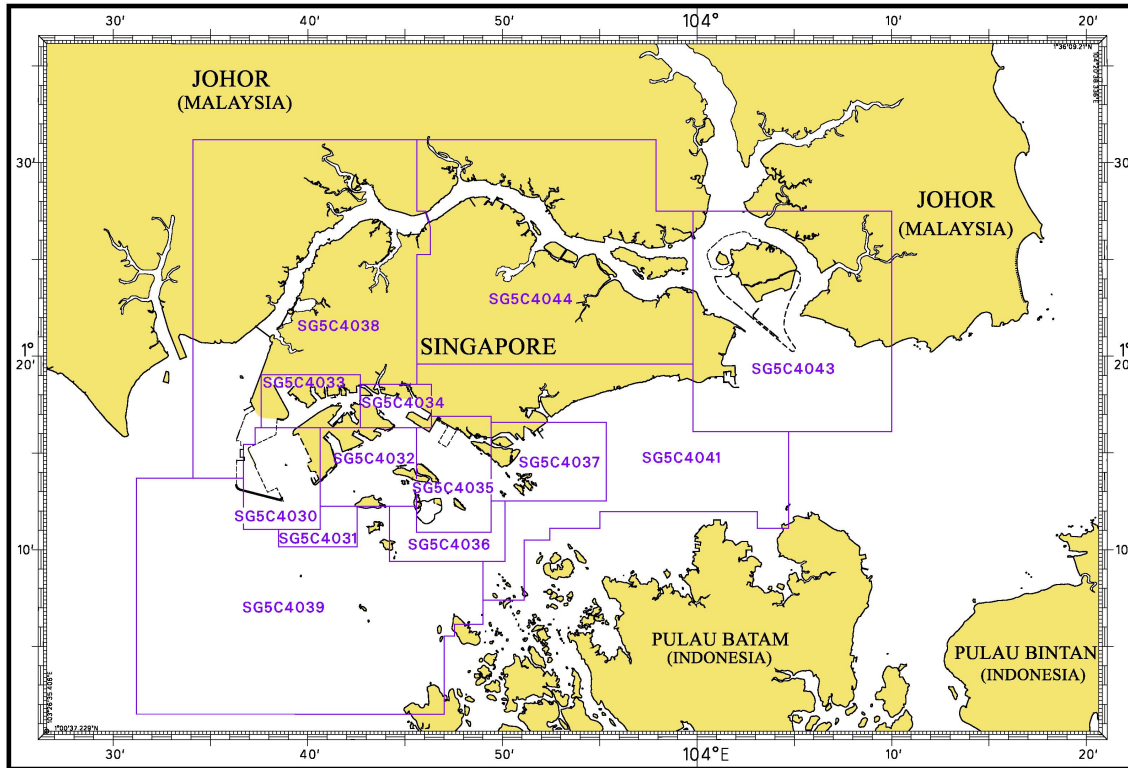
I INDEX OF CHARTS AND PUBLICATIONS

INDEX OF DUAL BADGED CHARTS



I INDEX OF CHARTS AND PUBLICATIONS

INDEX OF SINGAPORE ELECTRONIC NAVIGATIONAL CHART (ENC)



COVERAGE OF SINGAPORE ELECTRONIC NAVIGATIONAL CHART (ENC)

| ENC Name | ENC Coverage | ENC Edition |
|----------|---|---------------------------------------|
| SG5C4030 | West Jurong Anchorages and Temasek Fairway | 4 th Edition (28/10/2010) |
| SG5C4031 | Western Approaches to Jurong Island | 4 th Edition (28/10/2010) |
| SG5C4032 | Sinki Fairway | 6 th Edition (27/04/2011) |
| SG5C4033 | Tuas Bay, West Jurong Channel and Pesek Basin | 4 th Edition (28/10/2010) |
| SG5C4034 | East Jurong Channel, Pasir Panjang Terminal and West Keppel Fairway | 9 th Edition (29/09/2011) |
| SG5C4035 | Western Anchorages, Jong Fairway and Cruise Bay | 10 th Edition (29/09/2011) |
| SG5C4036 | Raffles Lighthouse to The Sisters | 5 th Edition (27/04/2011) |
| SG5C4037 | Keppel Harbour, Tanjong Pagar Terminal and Approaches | 5 th Edition (31/05/2011) |
| SG5C4038 | Johor Strait – Western Part | 4 th Edition (28/10/2010) |
| SG5C4039 | Western Approaches to Main Strait | 4 th Edition (11/08/2011) |
| SG5C4041 | Pulau Sebarok to Changi | 5 th Edition (11/08/2011) |
| SG5C4043 | Kuala Johor and Sungai Johor | 6 th Edition (28/07/2011) |
| SG5C4044 | Johor Strait – Eastern Part | 6 th Edition (28/07/2011) |

II NEW PUBLICATIONS

NEW EDITION SINGAPORE PORT INFORMATION 2012/2013 TO BE PUBLISHED ON 3RD MAY 2012.

Summary of Publication

This publication contains Port Information such as:

1. Routeing and Reporting Information

- a) Straits of Malacca and Singapore – Routeing System.
- b) Mandatory Ship Reporting In the Straits of Malacca and Singapore – Straitrep.
- c) Rules for vessels navigating during hours of darkness through the Straits of Malacca and Singapore.
- d) Revised reporting procedures for notification and confirmation of a vessel's arrival in Singapore
- e) Amendment to reporting procedures for vessels manoeuvring in port.
- f) Guide to VHF communication in port and Singapore Strait
- g) VHF Radio Telephone reporting Procedures for vessel manoeuvring within the Traffic Information Area in the East Johor Strait.
- h) Tall vessels' movements in the port waters surrounding Changi Airport.
- i) Height Restricted Areas in port.

2. Pilotage and Pilotage Exemption Information

3. Port Clearances and Reporting

- a) Port health clearance procedures for vessels arriving in Singapore.
- b) Port clearance formalities for arriving and departing vessels.
- c) Reporting of Marine incidents in port.
- d) Dissemination of passage plan to shipmasters.
- e) Conduct of mandatory Port Limit courses.
- f) Facilities for the collection of garbage from ships in Singapore.

4. Navigational Information

- a) Anchorages and fairways in the port.
- b) The use of canoes and kayaks within the port limits of Singapore.
- c) Depths of Navigational channels and fairways.
- d) Depths of rivers and Basins.

5. Information on Aids to Navigation

- a) IALA Maritime Buoyage System
- b) Characteristics of Aids to Navigation – List of beacons, buoys and lighthouses.

6. Communication – International Code of Signals

7. Nautical Services and Products

- a) Index and chart catalogue of Singaporean charts.
- b) Index and chart catalogue of Dual Badged charts.
- c) Agents for Maritime and Port Authority of Singapore publications.
- d) Singapore Electronic Navigational Charts (ENC) Catalogue and Electronic Navigational Charts Distributors.

To Whom Will It Be Useful?

Mariners, shipping community, port users and other interested users.

Frequency / Year of Publication

Once every 2 years.

This publication would be available from the following Chart Agents:

- 1) DPM (Singapore) Pte Ltd
- 2) E.W. Liner Charts & Publications Pte Ltd
- 3) Motion Smith

II NEW PUBLICATIONS

Amendments to anchorages and fairways affecting the following publications:
(It will be implemented from 0000 HOURS UT, 1st June 2012)

NEW EDITION SINGAPOREAN CHARTS TO BE PUBLISHED ON 3RD MAY 2012 (To be used from 0000 HOURS UT 1st June 2012)

| | | |
|-------------------------------|---|---|
| Chart Number | : | GSP1 |
| Title | : | Anchorage and Aids to Navigation (with area reference) |
| Coverage | : | Lat 01°08'20"N 01°29'40"N Long 103°35'70"E 103°07'20"E |
| Scale | : | 1: 60 000 |
| Date Published | : | 3 rd May 2012 |
| Size of Chart | : | 973.9 x 651.2 mm |
| Description of changes | : | This new edition includes : <ul style="list-style-type: none"> • Revised anchorages and fairways • Revised Height Restricted Area • New submarine cables • Marina South – ICT Terminal • Reclamation at Ayer Merbau (Jurong Island) • New depth contours covering:- <ol style="list-style-type: none"> i. East Jurong Channel ii. Around Pulau Tekong iii. West Bound Lane of the TSS South of Eastern Anchorages iv. Jong Fairway v. East Keppel Fairway |

This new edition supersedes the earlier edition published on 27th January 2011.

| | | |
|-------------------------------|---|---|
| Chart Number | : | SP1 |
| Title | : | Anchorage and Aids to Navigation |
| Coverage | : | Lat 01°08'20"N 01°29'40"N Long 103°35'70"E 103°07'20"E |
| Scale | : | 1: 60 000 |
| Date Published | : | 3 rd May 2012 |
| Size of Chart | : | 973.9 x 651.2 mm |
| Description of changes | : | This new edition includes : <ul style="list-style-type: none"> • Revised anchorages and fairways • Revised Height Restricted Area • New submarine cables • Marina South – ICT Terminal • Reclamation at Ayer Merbau (Jurong Island) • New depth contours covering:- <ol style="list-style-type: none"> i. East Jurong Channel ii. Around Pulau Tekong iii. West Bound Lane of the TSS South of Eastern Anchorages iv. Jong Fairway v. East Keppel Fairway |

This new edition supersedes the earlier edition published on 27th January 2011.

II NEW PUBLICATIONS

NEW EDITION SINGAPOREAN CHARTS TO BE PUBLISHED ON 3RD MAY 2012 (To be used from 0000 HOURS UT 1ST June 2012)

| | | |
|-------------------------------|---|---|
| Chart Number | : | 501 |
| Title | : | Singapore Strait – Western Part |
| Coverage | : | Lat 0°58'36"N 0°16'00"N Long 103°29'17"E 103°55'05"E |
| Scale | : | 1: 50 000 |
| Date Published | : | 3 rd May 2012 |
| Size of Chart | : | 960.0 x 649.9 mm |
| Description of changes | : | This new edition includes : <ul style="list-style-type: none"> • Revised anchorages and fairways • New submarine cables • New coastline of Jurong Island • Updated surveys covering Dual Badged Charts 4039, 4040 and 4041 which would be published on 3rd May 2012. |

This new edition supersedes the earlier edition published on 24th Sep 2009.

| | | |
|-------------------------------|---|---|
| Chart Number | : | 502 |
| Title | : | Singapore Strait – Eastern Part |
| Coverage | : | Lat 01°07'00"N 01°24'61"N Long 103°51'43"E 104°17'31"E |
| Scale | : | 1: 50 000 |
| Date Published | : | 3 rd May 2012 |
| Size of Chart | : | 960.0 x 649.2 mm |
| Description of changes | : | This new edition includes : <ul style="list-style-type: none"> • Revised anchorages and fairways • Revised Height Restricted Area • Marina South – ICT Terminal • Updated surveys covering Dual Badged Chart 4041, which would be published on 3rd May 2012. • New submarine cables and topographic details |

This new edition supersedes the earlier edition published on 22nd Sep 2011.

II NEW PUBLICATIONS

Amendments to anchorages and fairways affecting the following publications:
(It will be implemented from 0000 HOURS UT, 1st June 2012)

NEW EDITION DUAL BADGED CHARTS TO BE PUBLISHED ON 3RD MAY 2012 (To be used from 0000 HOURS UT 1st June 2012)

Chart Number : 4030
Title : Port of Singapore
 West Jurong Anchorages and Temasek Fairway
Coverage : Lat 01°11·05'N 01°17·00'N
 Long 103°36·70'E 103°40·70'E
Scale : 1: 10 000
Date Published : 3rd May 2012
Size of Chart : 742.0 x 1096.5 mm
Description of changes : a) Updated survey data covering these areas :
 • Temasek Fairway
 • West Jurong Anchorages
 • West Jurong Channel
 • Sudong Holding Anchorage
 • Area surrounding the Tuas View Extension
 b) Amendment of West Jurong Anchorage
 c) Deletion of Tuas Petroleum Holding Anchorage

The existing chart of the same number published on 25th March 2010 will be superseded.

Chart Number : 4031
Title : Port of Singapore
 Western Approaches to Jurong Island
Coverage : Lat 01°10·15'N 01°16·12'N
 Long 103°38·50'E 103°42·53'E
Scale : 1: 10 000
Date Published : 3rd May 2012
Size of Chart : 747.5 x 1100.2 mm
Description of changes : a) Updated survey data covering these areas :
 • Temasek Fairway
 • Sudong Anchorages
 • Banyan Basin
 • Approaches to Sinki Fairway
 b) Amendment of West Jurong Anchorage

The existing chart of the same number published on 25th March 2010 will be superseded.

II NEW PUBLICATIONS

NEW EDITION DUAL BADGED CHARTS TO BE PUBLISHED ON 3RD MAY 2012 (To be used from 0000 HOURS UT 1st June 2012)

| | | |
|-------------------------------|---|---|
| Chart Number | : | 4032 |
| Title | : | Port of Singapore Sinki Fairway |
| Coverage | : | Lat 01°12'25"N 01°16'30"N Long 103°40'20"E 103°46'13"E |
| Scale | : | 1: 10 000 |
| Date Published | : | 3 rd May 2012 |
| Size of Chart | : | 1100.0 x 746.4 mm |
| Description of changes | : | a) Updated survey data covering these areas : <ul style="list-style-type: none"> • Portion of Banyan Basin • Sakra basin • East Jurong Channel • South of Pulau Ular • Selat Sinki <p>b) Amendment of Selat Pauh Anchorage</p> <p>c) Insertion of Selat Pauh Petroleum Anchorage</p> |

The existing chart of the same number published on 4th March 2010 will be superseded.

| | | |
|-------------------------------|---|--|
| Chart Number | : | 4033 |
| Title | : | Port of Singapore Tuas Bay, West Jurong Channel and Pesek Basin |
| Coverage | : | Lat 01°15'00"N 01°19'05"N Long 103°36'80"E 103°42'70"E |
| Scale | : | 1: 10 000 |
| Date Published | : | 3 rd May 2012 |
| Size of Chart | : | 1094.4 x 746.4 mm |
| Description of changes | : | a) Updated survey data covering these areas : <ul style="list-style-type: none"> • Temasek Fairway • Portion of West Jurong Channel • Tanjong Kling Basin • East Samulun Basin • West Samulun Basin • Pesek Basin • Northern Tuas Basin <p>b) Amendment of West Jurong Anchorage</p> <p>c) Deletion of Tuas Petroleum Holding Anchorage</p> |

The existing chart of the same number published on 4th March 2010 will be superseded.

II NEW PUBLICATIONS

NEW EDITION DUAL BADGED CHARTS TO BE PUBLISHED ON 3RD MAY 2012 (To be used from 0000 HOURS UT 1ST June 2012)

| | | |
|-------------------------------|---|---|
| Chart Number | : | 4039 |
| Title | : | Western Approaches to Main Strait |
| Coverage | : | Lat 01°01'50"N 01°13'70"N Long 103°31'20"E 103°49'00"E |
| Scale | : | 1: 30 000 |
| Date Published | : | 3 rd May 2012 |
| Size of Chart | : | 1100.7 x 749.5 mm |
| Description of changes | : | a) Updated survey data covering these areas : <ul style="list-style-type: none">• South of Tuas View Extension• Shell SBM Area• Jong Fairway• Sudong Anchorages• Selat Pauh Anchorage• Sinki Fairway |
| | | b) Amendment of the following anchorages: <ul style="list-style-type: none">• Selat Pauh Anchorage• Raffles Reserved Anchorage |
| | | c) Insertion of the following anchorages: <ul style="list-style-type: none">• Raffles Petroleum Anchorage• Sudong Petroleum Holding Anchorage• Selat Pauh Petroleum Anchorage |

The existing chart of the same number published on 11th August 2011 will be superseded.

II NEW PUBLICATIONS

NEW EDITION DUAL BADGED CHARTS TO BE PUBLISHED ON 3RD MAY 2012 (To be used from 0000 HOURS UT 1ST June 2012)

| | | |
|-------------------------------|---|---|
| Chart Number | : | 4040 |
| Title | : | Singapore, Indonesia and Malaysia Tuas View to Pulau Sakijang Bendera (S. John's Island) |
| Coverage | : | Lat 01°07'40"N 01°19'60"N Long 103°34'10"E 103°51'90"E |
| Scale | : | 1: 30 000 |
| Date Published | : | 3 rd May 2012 |
| Size of Chart | : | 1100.6 x 749.5 mm |
| Description of changes | : | <p>a) Updated survey data covering these areas :</p> <ul style="list-style-type: none"> • Area surrounding the Tuas View Extension • West and East Jurong Channel • Portion of Temasek Fairway • Portion of East Jurong Channel • Approaches to Tanjong Pagar Terminal <p>b) Amendment of the following fairways and anchorages:</p> <ul style="list-style-type: none"> • West Keppel Fairway • East Keppel Fairway • West Jurong Anchorage • Selat Pauh Anchorage • Raffles Reserved Anchorage <p>c) Deletion of the following fairway and anchorage:</p> <ul style="list-style-type: none"> • Pasir Panjang Fairway • Tuas Petroleum Holding Anchorage <p>d) Insertion of the following anchorages:</p> <ul style="list-style-type: none"> • Sudong Petroleum Holding Anchorage • Selat Pauh Petroleum Anchorage • Raffles Petroleum Anchorage |

The existing chart of the same number published on 11th August 2011 will be superseded.



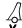


II NEW PUBLICATIONS

NEW EDITION DUAL BADGED CHARTS TO BE PUBLISHED ON 3RD MAY 2012 (To be used from 0000 HOURS UT 1st June 2012)





| | | |
|-------------------------------|---|--|
| Chart Number | : | 4041 |
| Title | : | Singapore and Indonesia Pulau Sebarok to Changi |
| Coverage | : | Lat 01°07'40"N 01°19'60"N Long 103°46'90"E 103°04'70"E |
| Scale | : | 1: 30 000 |
| Date Published | : | 3 rd May 2012 |
| Size of Chart | : | 1100.6 x 749.5 mm |
| Description of changes | : | <p>a) Updated survey data covering these areas :</p> <ul style="list-style-type: none"> • West Bound Lane of the Traffic Separation Scheme • Portion of East Keppel Fairway • Approaches to Tanjong Pagar Terminal • New International Cruise Terminal <p>b) Amendment of the following fairway and anchorages:</p> <ul style="list-style-type: none"> • East Keppel Fairway • Eastern Petroleum B Anchorage • Eastern Special Purposes A Anchorage • Eastern Bunkering C Anchorage <p>c) Deletion of the following anchorages:</p> <ul style="list-style-type: none"> • Explosives Anchorage • Eastern Special Purposes D Anchorage • Eastern Special Purposes B Anchorage • Small Craft Anchorage • Laid-up Vessels Anchorage <p>d) Insertion of the following anchorages:</p> <ul style="list-style-type: none"> • Small Craft A Anchorage • Small Craft B Anchorage • Eastern Petroleum C Anchorage <p>e) Renaming of Corridor to Eastern Corridor</p> <p>f) Height Restricted Areas:</p> <ul style="list-style-type: none"> • Amendment of Height Restricted Area for all vessels over 15 metres high. • Insertion of Height Restricted Area for all vessels over 30 metres high. |

The existing chart of the same number published on 11th August 2011 will be superseded.

II
NOTICES TO MARINERS AND CHART CORRECTIONS

| | | | | |
|------------------|---|---|--|--|
| GSP1, SP1 | 6 Ed 27/1/11 Last NM 22/2012 | (HD/HY/AB0300812) | | *NM 30/2012 |
| Insert | Prohibited area 'TTTT' joining from | | 1°18-71'N 1°19-49'N 1°19-48'N | 104°02-40'E 104°02-38'E 104°01-95'E |
| Delete | Prohibited area 'TTTT' joining from | | 1°18-71'N 1°18-81'N 1°19-45'N 1°19-44'N | 104°02-40'E 104°02-23'E 104°02-22'E 104°01-96'E |
| | Restricted area 'TTTT' joining from | | 1°19-45'N 1°19-48'N | 104°02-09'E 104°02-11'E |
| | | (HD/HE025/21 & 22/2012) | | *NM 31/2012 |
| Delete |  <i>Fl.Y.4s, MB1</i> | | 1°15-67'N | 103°43-78'E |
| |  <i>Fl.Y.4s, MB2</i> | | 1°15-61'N | 103°43-62'E |
| | | (HD/HE025/24/2012) | | *NM 32/2012 |
| Delete |  <i>Fl.Y.4s ADCP3</i> | | 1°14-32'N | 103°46-28'E |
| <hr/> | | | | |
| 202 | 6 Ed 24/9/09 Last NM 109/2011 | (HD/HY/AB0300812) | | *NM 30/2012 |
| Insert | Prohibited area 'TTTT' joining from | | 1°18-71'N 1°19-49'N 1°19-48'N | 104°02-40'E 104°02-38'E 104°01-95'E |
| Delete | Prohibited area 'TTTT' joining from | | 1°18-71'N 1°18-81'N 1°19-45'N 1°19-44'N | 104°02-40'E 104°02-23'E 104°02-22'E 104°01-96'E |
| | | (Indonesia Hydro Oceanographic Office) (HD/DB67/7/2012) | | NM 33/2012 |
| Insert |  <i>Wk</i> | | 1°08-61'N | 103°33-88'E |
| | | (Admiralty Notices to Mariners No. 11/1169/2012) | | NM 34/2012 |
| Replace | depth <i>4₅</i> enclosed by 5m contour with  with Seabed type, R | | 0°53-19'N | 104°37-08'E |

II
NOTICES TO MARINERS AND CHART CORRECTIONS

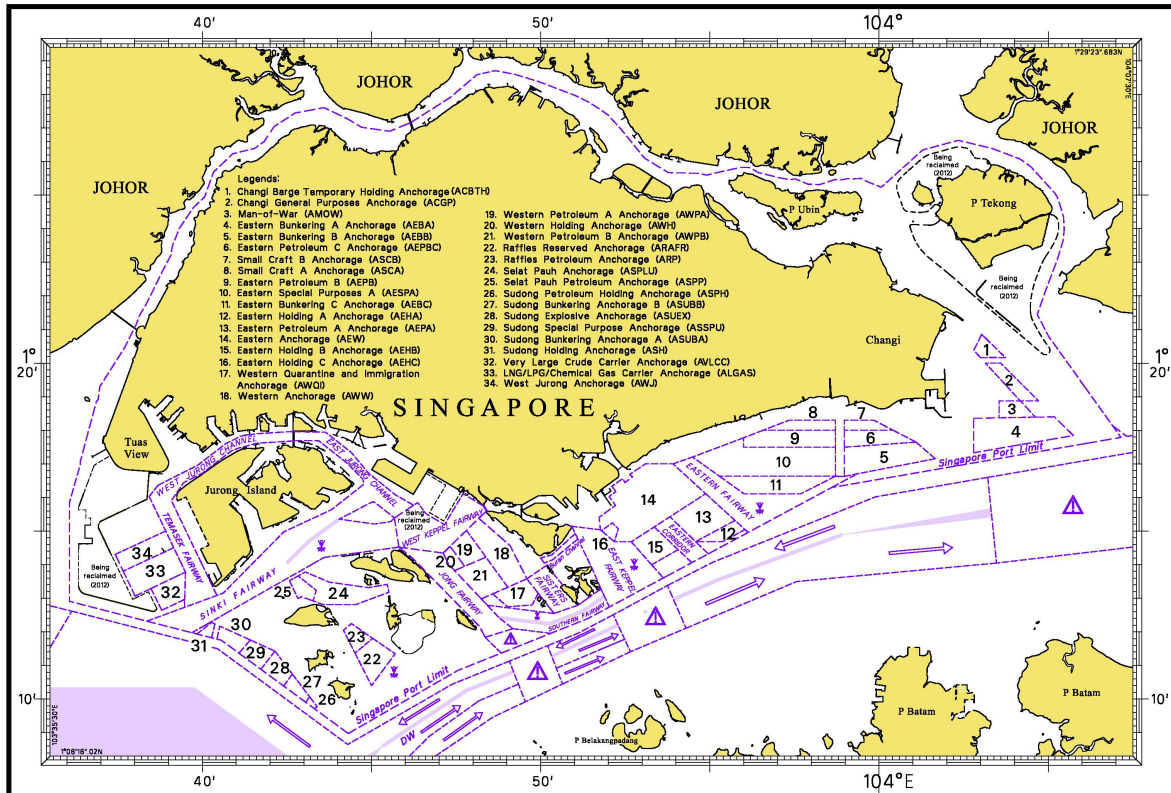
| | | | |
|---------------|---|--|--|
| 500 | 6 Ed 7/10/10 Last NM 74/2011 | (Indonesia Hydro Oceanographic Office) (HD/DB67/7/2012) | NM 33/2012 |
| Insert |  Wk | | 1°08·61'N 103°33·88'E |
| Insert |  FI(4)Y.10s | (Malaysia Marine Dept. Southern Region Port Circular No. 7/2012) | NM 35/2012 1°15·26'N 103°33·54'E |
| <hr/> | | | |
| 501 | 5 Ed 24/09/09 Last NM 21/2012 | (Indonesia Hydro Oceanographic Office) (HD/DB67/7/2012) | NM 33/2012 |
| Insert |  Wk | | 1°08·61'N 103°33·88'E |
| Insert |  FI(4)Y.10s | (Malaysia Marine Dept. Southern Region Port Circular No. 7/2012) | NM 35/2012 1°15·26'N 103°33·54'E |
| <hr/> | | | |
| 502 | 5 Ed 22/09/11 Last NM 22/2012 | (HD/HY/AB0300812) | *NM 30/2012 |
| Insert | Prohibited area 'TTTT' joining from | | 1°18·71'N 104°02·40'E 1°19·49'N 104°02·38'E 1°19·48'N 104°01·95'E |
| Delete | Prohibited area 'TTTT' joining from | | 1°18·71'N 104°02·40'E 1°18·81'N 104°02·23'E 1°19·45'N 104°02·22'E 1°19·44'N 104°01·96'E |
| | Restricted area 'TTTT' joining from | | 1°19·45'N 104°02·09'E 1°19·48'N 104°02·11'E |
| <hr/> | | | |

II TEMPORARY AND PRELIMINARY NOTICES

(NM 36P/2012) REVISION OF ANCHORAGES AND FAIRWAYS

- Amendments to anchorages and fairways will be implemented from **0000 HOURS UT, 1 JUNE 2012**. The new anchorages and fairways are shown on the diagram below.

SINGAPORE ANCHORAGES AND FAIRWAYS TO BE IMPLEMENTED FROM 0000 HOURS UT, 1ST JUNE 2012



- The anchorages and fairways are listed below with their limits both before and after the implementation date. (All positions are referred to WGS84 Datum).

| Anchorage designation | LIMITS UNTIL 0000 HOURS UT, 1 JUNE 2012 | NEW LIMITS AFTER 0000 HOURS UT, 1 JUNE 2012 |
|------------------------------|--|--|
| Tuas Petroleum Holding | 1°15'031'N, 103°37'079'E 1°15'510'N, 103°38'078'E 1°15'168'N, 103°38'240'E 1°14'692'N, 103°37'240'E | Anchorage deleted |
| West Jurong | 1°15'743'N, 103°38'564'E 1°14'505'N, 103°39'155'E 1°13'807'N, 103°37'661'E 1°14'692'N, 103°37'240'E 1°15'168'N, 103°38'240'E 1°15'510'N, 103°38'078'E | 1°15'002'N, 103°38'918'E 1°14'505'N, 103°39'155'E 1°13'807'N, 103°37'661'E 1°14'305'N, 103°37'425'E |
| Selat Pauh Petroleum | | 1°13'524'N, 103°42'576'E 1°13'664'N, 103°42'833'E 1°13'234'N, 103°43'366'E 1°12'922'N, 103°43'270'E 1°13'047'N, 103°42'930'E 1°12'991'N, 103°42'826'E |

II
TEMPORARY AND PRELIMINARY NOTICES

| | | |
|--------------------------|--|--|
| Selat Pauh | 1°13-780'N, 103°43-047'E 1°13-480'N, 103°43-747'E 1°13-314'N, 103°44-914'E 1°13-414'N, 103°45-463'E 1°13-180'N, 103°45-515'E 1°12-814'N, 103°44-547'E 1°12-814'N, 103°43-563'E 1°13-048'N, 103°42-930'E 1°13-580'N, 103°42-680'E | 1°13-780'N, 103°43-047'E 1°13-480'N, 103°43-747'E 1°13-314'N, 103°44-914'E 1°13-414'N, 103°45-463'E 1°13-180'N, 103°45-515'E 1°12-814'N, 103°44-547'E 1°12-814'N, 103°43-563'E 1°12-922'N, 103°43-270'E 1°13-234'N, 103°43-366'E 1°13-664'N, 103°42-833'E |
| Raffles Reserved | 1°11-898'N, 103°44-247'E 1°12-147'N, 103°44-546'E 1°11-347'N, 103°45-697'E 1°10-397'N, 103°45-000'E | 1°11-368'N, 103°44-513'E 1°11-805'N, 103°45-038'E 1°11-347'N, 103°45-697'E 1°10-397'N, 103°45-000'E |
| Raffles Petroleum | | 1°12-046'N, 103°44-172'E 1°12-244'N, 103°44-409'E 1°11-805'N, 103°45-038'E 1°11-368'N, 103°44-513'E |
| Sudong Petroleum Holding | | 1°10-065'N, 103°43-171'E 1°09-770'N, 103°43-394'E 1°09-713'N, 103°43-313'E 1°09-905'N, 103°43-054'E |
| Explosives | 1°17-130'N, 103°53-546'E 1°17-130'N, 103°53-911'E 1°17-000'N, 103°53-911'E 1°17-000'N, 103°53-546'E | Anchorage deleted |
| Eastern | 1°15-038'N, 103°51-766'E 1°16-015'N, 103°51-661'E 1°16-085'N, 103°51-759'E 1°15-922'N, 103°51-876'E 1°16-173'N, 103°52-222'E 1°16-333'N, 103°52-107'E 1°16-563'N, 103°52-427'E 1°16-441'N, 103°52-493'E 1°16-620'N, 103°52-716'E 1°16-680'N, 103°52-628'E 1°17-000'N, 103°53-095'E 1°17-000'N, 103°53-911'E 1°16-112'N, 103°54-876'E 1°14-680'N, 103°52-679'E 1°14-680'N, 103°52-179'E 1°15-066'N, 103°52-294'E 1°15-241'N, 103°52-119'E 1°15-013'N, 103°51-795'E | 1°15-038'N, 103°51-766'E 1°15-409'N, 103°51-727'E 1°15-764'N, 103°52-212'E 1°16-028'N, 103°52-022'E 1°16-173'N, 103°52-222'E 1°16-333'N, 103°52-107'E 1°16-563'N, 103°52-427'E 1°16-441'N, 103°52-493'E 1°16-620'N, 103°52-716'E 1°16-680'N, 103°52-628'E 1°17-000'N, 103°53-095'E 1°17-000'N, 103°53-911'E 1°16-112'N, 103°54-876'E 1°14-680'N, 103°52-679'E 1°14-680'N, 103°52-179'E 1°15-066'N, 103°52-294'E 1°15-241'N, 103°52-119'E 1°15-013'N, 103°51-795'E |
| Small Craft | 1°17-205'N, 103°54-491'E 1°17-573'N, 103°55-478'E 1°16-500'N, 103°55-470'E | Anchorage deleted |
| Laid Up Vessels | 1°17-573'N, 103°55-478'E 1°17-780'N, 103°56-012'E 1°16-630'N, 103°56-012'E 1°16-630'N, 103°55-470'E | Anchorage deleted |
| Small Craft A | | 1°18-297'N, 103°57-333'E 1°18-297'N, 103°58-710'E 1°18-000'N, 103°58-710'E 1°18-000'N, 103°56-573'E |
| Eastern Petroleum B | 1°17-975'N, 103°56-513'E 1°17-975'N, 103°57-620'E 1°17-592'N, 103°58-710'E <i>Continued on page 18</i> | 1°18-000'N, 103°56-573'E 1°18-000'N, 103°58-710'E 1°17-498'N, 103°58-710'E |

II
TEMPORARY AND PRELIMINARY NOTICES

| | | |
|----------------------------|--|--|
| Eastern Petroleum B | <i>Continued from page 17</i> 1°17-500'N, 103°58-710'E 1°17-500'N, 103°56-013'E 1°17-780'N, 103°56-013'E | 1°17-498'N, 103°56-000'E 1°17-776'N, 103°56-000'E |
| Eastern Special Purposes B | 1°18-297'N, 103°57-333'E 1°18-297'N, 103°58-710'E 1°17-592'N, 103°58-710'E 1°17-975'N, 103°57-620'E 1°17-975'N, 103°56-513'E | Anchorage deleted |
| Eastern Special Purposes A | 1°17-500'N, 103°56-013'E 1°17-500'N, 103°58-710'E 1°16-630'N, 103°58-710'E 1°16-630'N, 103°56-013'E | 1°17-498'N, 103°56-000'E 1°17-498'N, 103°58-710'E 1°16-630'N, 103°58-710'E 1°16-630'N, 103°55-286'E 1°17-204'N, 103°54-489'E 1°17-776'N, 103°56-000'E |
| Eastern Bunkering C | 1°16-630'N, 103°55-470'E 1°16-630'N, 103°58-710'E 1°16-107'N, 103°57-682'E 1°16-107'N, 103°56-012'E 1°16-500'N, 103°55-470'E | 1°16-630'N, 103°55-286'E 1°16-630'N, 103°58-710'E 1°16-107'N, 103°57-682'E 1°16-107'N, 103°56-012'E |
| Eastern Special Purposes D | 1°18-297'N, 103°58-980'E 1°18-297'N, 103°59-852'E 1°17-647'N, 103°01-094'E 1°17-497'N, 103°58-979'E | Anchorage deleted |
| Small Craft B | | 1°18-297'N, 103°58-978'E 1°18-297'N, 103°59-853'E 1°18-000'N, 104°00-420'E 1°18-000'N, 103°58-978'E |
| Eastern Petroleum C | | 1°18-000'N, 103°58-978'E 1°18-000'N, 104°00-420'E 1°17-647'N, 104°01-095'E 1°17-497'N, 103°58-978'E |

| <i>Fairway designation</i> | <i>LIMITS UNTIL 0000 HOURS UT, 1 JUNE 2012</i> | <i>NEW LIMITS AFTER 0000 HOURS UT, 1 JUNE 2012</i> |
|-----------------------------------|--|---|
| Pasir Panjang Fairway | 1°16-053'N, 103°46-309'E 1°16-678'N, 103°46-679'E 1°16-578'N, 103°46-846'E 1°16-341'N, 103°47-181'E 1°16-166'N, 103°47-080'E 1°16-170'N, 103°47-070'E 1°16-230'N, 103°47-112'E 1°16-449'N, 103°46-803'E 1°15-938'N, 103°46-500'E | Fairway deleted |
| East Keppel Fairway | | A northern limit has been inserted joining: 1°15-142'N, 103°50-917'E (existing limit) 1°15-038'N, 103°51-766'E (existing limit) |
| West Keppel Fairway | | The existing limits have been amended as follows: 1°15-391'N, 103°45-677'E (existing limit) |
| | <i>Continued on page 19</i> | |

II
TEMPORARY AND PRELIMINARY NOTICES

| | | |
|---------------------|-------------------------------|--|
| West Keppel Fairway | <i>Continued from page 18</i> | 1°15·848'N, 103°46·366'E 1°15·523'N, 103°46·603'E 1°15·189'N, 103°47·159'E 1°16·115'N, 103°47·707'E 1°15·746'N, 103°48·307'E 1°15·595'N, 103°48·392'E (existing limit) |
| CORRIDOR | | The legend, CORRIDOR, centred on 1°14·700'N, 103°54·235'E, is replaced by legend, EASTERN CORRIDOR |

Charts affected: GSP1, SP1, 500, 501, 502, 4030, 4031, 4032, 4033, 4034, 4035, 4036, 4037, 4038,
4039, 4040, 4041 and 4043

II
TEMPORARY AND PRELIMINARY NOTICES

New Height Restricted Area for all vessels over 30 metres high

| Nos. | Latitude | Longitude |
|-------------|-----------------|------------------|
| 1 | 1°18.181'N | 103°57.036'E |
| 2 | 1°18.297'N | 103°57.333'E |
| 3 | 1°18.297'N | 103°59.853'E |
| 4 | 1°17.647'N | 104°01.095'E |
| 5 | 1°17.497'N | 103°58.978'E |
| 1 | 1°18.181'N | 103°57.036'E |

Charts affected: GSP1, SP1, 502, 4041, 4042, 4043 and 4044

II
TEMPORARY AND PRELIMINARY NOTICES

**(NM 38P/2012) DEVELOPMENT OF THE INDEPENDENT DEEPWATER TERMINAL –
Installation of Light Buoys**

Purpose

Mariners are notified that light buoys has been installed to demarcate the working area of the development of the Independent Deepwater Terminal around Tanjong Kapal in the Pengerang waters, Johor.

Date

With effect from 1st September 2011 to 30th April 2013.

Working Area

Within an area bounded by the following coordinates :

| | Working Area | |
|----------|---------------------|----------------------|
| | Latitude (N) | Longitude (E) |
| 1 | 1°20'608' | 104°09'068' |
| 2 | 1°18'500' | 104°08'825' |
| 3 | 1°18'905' | 104°11'345' |
| 4 | 1°20'756' | 104°11'570' |

| Name | Installation of light buoys | | |
|------------------|------------------------------------|----------------------|------------------------------|
| | Latitude (N) | Longitude (E) | Light Characteristics |
| *Dialog 1 | 1°19'58' | 104°08'97' | Fl.Y.6s |
| *Dialog 2 | 1°18'50' | 104°08'83' | Fl.Y.2s |
| *Dialog 3 | 1°18'64' | 104°09'71' | Q.Fl.Y |
| *Dialog 4 | 1°18'78' | 104°10'52' | Fl(4)Y.15s |
| *Dialog 5 | 1°18'91' | 104°11'35' | Fl.Y.3s |
| *Dialog 6 | 1°19'63' | 104°11'44' | Fl(2)Y.10s |

**The buoys are yellow in colour with yellow cross as the topmark.*

Caution

Mariners are advised to:

- (a) Navigate with caution and proceed at slow speed when approaching the area; and
- (b) Keep well clear of the working vessels.

Charts affected: GSP1, SP1, 202, 502 and 4041.

Source: Marine Dept. Malaysia, Southern Region, Port Circular No. 11/2011 and 52012.

**(NM 39T/2012) ASIA SUBMARINE CABLE EXPRESS (ASE) – Silt Monitoring Works off
Changi East**

Purpose

Mariners are notified that silt monitoring works are being carried out along the ASE cable route within the Singapore Port Limit.

Date of work

With effect from 27th March to 30th May 2012.

Duration of

work : Approximately 63 days.

III NAVIGATIONAL INFORMATION

*(NM 40/2012) PORT MARINE NOTICES

The following PMNs have been shortlisted, as they would be of particular interest to mariners.

These notices can be accessed directly from MPA website:

http://www.mpa.gov.sg/sites/port_and_shipping/circulars_and_notices/port_marine_notices.page

| PMN No. | Subject |
|---------|---|
| 26/2012 | Construction of Mooring dolphin at Jurong Port Berth J25. |
| 28/2012 | Soil investigation works off Tuas View. |
| 30/2012 | Dredging works off Pasir Panjang Terminal. |
| 33/2012 | Dredging works at Benoi Basin. |
| 34/2012 | Construction works at Keppel Shipyard. |
| 36/2012 | Construction works at Vopak Terminal, Jurong Island. |
| 38/2012 | Dredging works off Oil Tanking Terminal, Jurong Island. |
| 39/2012 | Construction of sea water intake structure off Tuas View. |
| 40/2012 | Repair of wharf 6 at Shell Terminal, Pulau Bukom. |

*(NM 41/2012) SINGAPOREAN PRINT-ON-DEMAND (POD) CHARTS

Print-On-Demand (POD) Charts are the most up-to-date paper nautical charts printed for navigational use. These nautical charts are produced in accordance with the International Hydrographic Organisation (IHO) chart specifications. These official nautical charts are continually updated to the latest Notices to Mariners before they are printed and sold to users.

These POD Charts include GSP1, SP1, 200, 201, 202, 500, 501, 502 and 503.

BENEFITS TO OUR CUSTOMERS

Convenience

Customers need not make numerous hand corrections to the nautical charts before use. In addition the updated POD Charts are more accurate and reliable than offset printed charts with hand corrections.

Clarity

Clarity in the presentation of updated information as compared to lithographic printed charts, where in some cases there are several overlapping corrections over existing information.

Coverage

The POD Charts cover the Malacca and Singapore Straits, from One Fathom Bank to Horsburgh Lighthouse.

III AMENDMENTS TO PUBLICATIONS

***(NM 42/2012) UPDATING OF PUBLICATION “SINGAPORE PORT INFORMATION 2010/2011”**

1. Page 138 – Item 1

WHARVES AND BERTHS

TANJONG PAGAR TERMINAL (PSA SINGAPORE TERMINALS)(1°16.0'N, 103°51.0'E)

Insert the following:

| Berths | DEPTHS (m) | |
|-----------|---|------------------------------|
| | Delete 'Depth Alongside (Year Surveyed)' | Insert 'Maintained Depth' |
| T1 | 13.4m (2010) | 13.6m |
| T2 | 13.4m (2010) | 13.6m |
| T3 | 13.6m (2010) | 13.6m |
| T4 | 11.0m (2010) | 11.0m |

| Berths | Depth Alongside (Year Surveyed) | |
|-----------|------------------------------------|---------------------|
| | Delete | Insert |
| T5 | 14.8m (2011) | 14.5m (2011) |
| T6 | 13.6m (2010) | 13.2m (2011) |

Source: HD/HY Code B00102411, B00102611 and B00102711

2. Page 139 – Item 2

WHARVES AND BERTHS

KEPPEL TERMINAL (PSA SINGAPORE TERMINALS)(1°16.0'N, 103°50.0'E)

Insert the following:

| Berths | Depth Alongside (Year Surveyed) | |
|------------|------------------------------------|---------------------|
| | Delete | Insert |
| K11 | 14.1m (2011) | 13.4m (2011) |
| K19 | 11.0m (2002) | 11.0m (2009) |

Source: HD/HY Code B00102411 and B00100909

3. Page 141 – Item 3

BRANI TERMINAL (PSA SINGAPORE TERMINALS)(1°15.7'N, 103°50.2'E)

Insert the following:

| Berths | Depth Alongside (Year Surveyed) | |
|-----------|------------------------------------|---------------------|
| | Delete | Insert |
| B4 | 15.0m (2008) | 15.0m (2009) |
| B5 | 12.7m (2007) | 15.0m (2009) |
| B6 | 14.7m (2003) | 15.0m (2009) |

Source: HD/HY Code B00100809

III
AMENDMENTS TO PUBLICATIONS

4. Page 148 – Item 17

JURONG – TG. SAKUNYIT & JURONG ISLAND (EXXONMOBIL ASIA PACIFIC PTE LTD)
(1°17.9'N, 103°41.3'E)

Insert the following:

| Berths | Depth Alongside (Year Surveyed) | |
|----------|------------------------------------|---------------------|
| | Delete | Insert |
| 9 | 12.3m (2007) | 11.6m (2012) |

Source: HD/HY Code H00100512

5. Page 149 – Item 19

JURONG ISLAND - BANYAN BASIN (HORIZON SINGAPORE TERMINALS PTE LTD)
(1°14.7'N, 103°41.4'E)

Insert the following:

| Berths | Depth Alongside (Year Surveyed) | |
|--------------|------------------------------------|---------------------|
| | Delete | Insert |
| OBH 4 | 16.5m (2006) | 15.9m (2011) |

Source: HD/HY Code E00107411

6. Page 152 – Item 30

PULAU BUKOM (SHELL REFINERY)(1°14.0'N, 103°46.1'E)

Insert the following:

| Berths | Depth Alongside (Year Surveyed) | |
|--------------|------------------------------------|---------------------|
| | Delete | Insert |
| No. 9 | 13.0m (2005) | 13.0m (2012) |

| Single Buoy Mooring | Least Depth (Year Surveyed) | |
|------------------------|--------------------------------|---------------------|
| | Delete | Insert |
| Shell SBM | 24.6m (2010) | 24.5m (2011) |

Source: HD/HY Code C00102712 and F00105511

7. Page 153 – Item 35

LOYANG JETTY (TOLL OFFSHORE PETROLEUM SERVICES PTE LTD)(1°23.1'N, 103°58.1'E)

Insert the following:

| Berths | Length of Berth | Depth Alongside (Year Surveyed) | Controlling Depth In Approaches |
|----------|-----------------|------------------------------------|------------------------------------|
| 9 | 120m | 7.0m (2011) | 6.8m |
| A | 85m | 6.7m (2011) | 6.8m |
| B | 72m | 7.0m (2011) | 6.8m |
| C | 72m | 7.0m (2011) | 6.8m |

Source: HD/HY Code N00116211

IV
REPRINT OF RADIO NAVIGATIONAL WARNINGS

The following Radio Navigational Warnings have been shortlisted, as they would be of particular interest to mariners.

TT012

BUFFALO ROCK ISOLATED DANGER MARKS FL(2)5S IN POSITION 01°09'90"N 103°48'15"E IS UNLIT.

TT018

RACON DELTA Q(6)FL.15S IN POSITION LAT 01°03'59"N LONG 103°38'86"E IS REPORTED UNLIT.

TT022 (AMENDED 060130Z)

A COASTER VESSEL WAS REPORTED SUNK IN POSITION 01°10'80"N 103°34'00"E. VESSELS PASSING IN THE VICINITY ARE ADVISED TO KEEP CLEAR AND NAVIGATE WITH CAUTION.

TT023

SELAT PHILLIP BUOY LFL.10S IN POSITION 01°03'00"N 103°39'00"E IS UNLIT.

TT029

VESSEL 'MIRAERO' IS CARRYING OUT SUBMARINE CABLE WORKS ALONG THE FOLLOWING COORDINATES:

A 01° 15.46'N 104° 04.59'E

B 01° 14.77'N 104° 05.30'E

C 01° 14.81'N 104° 09.19'E

D 01° 15.27'N 104° 11.06'E

E 01° 15.74'N 104° 13.68'E

F 01° 17.53'N 104° 19.60'E

G 01° 18.41'N 104° 21.36'E

H 01° 22.13'N 104° 25.86'E

VESSELS ARE REQUESTED TO GIVE A WIDE BERTH AND NAVIGATE WITH CAUTION.

TT173

VESSELS IN EAST JOHOR STRAIT ARE ADVISED TO NAVIGATE WITH CAUTION WHEN NEAR THE PROJECT AREAS OFF PULAU TEKONG, CHANGI AND MALANG PAPAN AS SHALLOW WATER AREAS EXIST. VESSELS ARE ADVISED TO KEEP LOOKOUT FOR TUGS AND BARGES NAVIGATING NEAR THE PROJECT AREAS AND PASSENGER FERRIES CROSSING BETWEEN CHANGI AND PULAU TEKONG AND VICINITY OF PASIR GUDANG.

TT884

SALVAGE OPERATIONS UNDERWAY IN 01°13'40"N 103°57'75"E. ALL SHIPS ARE REQUESTED TO GIVE A WIDE BERTH OF AT LEAST 5 CABLES WHEN PASSING THE AREA.

TT931

VESSELS NAVIGATING IN THE SINGAPORE STRAIT ARE REQUESTED NOT TO DIRECT THEIR HIGH INTENSITY SEARCHLIGHTS SKYWARD IN THE VICINITY OF CHANGI AIRPORT TO AVOID DISRUPTION TO AIR NAVIGATION.

TT961

VESSELS INTENDING TO CROSS THE TRAFFIC SEPARATION SCHEME(TSS) OR PRECAUTIONARY AREAS IN THE SINGAPORE STRAIT DURING THE HOURS OF DARKNESS ARE RECOMMENDED TO DISPLAY THE NIGHT SIGNALS CONSISTING OF 3 ALL-ROUND GREEN LIGHTS IN A VERTICAL LINE WITH EFFECT FROM 1ST JULY 2011 AT 0000UTC (0800SGT) AS DETAILED IN MARITIME AND PORT AUTHORITY OF SINGAPORE'S PORT MARINE CIRCULAR, 02 OF 2011 DATED 30 MAY 2011.

ISSUED BY SINGAPORE PORT OPERATIONS CONTROL CENTRE (as at 18th March 2012)

V
**EXTRACT OF ADMIRALTY NOTICES TO MARINERS
 FOR DUAL BADGED CHARTS**

These notices can also be accessed directly from UKHO Website:

<http://www.ukho.gov.uk/ProductsandServices/MaritimeSafety/Pages/NMPublic.aspx>

1115* SINGAPORE – Jurong Island – Banyan Basin, Selat Pandan Westwards, West Jurong Channel, Tanjong Pagar Terminal, Pulau Batam North-westwards and Sembawang – Jetty. Berths. Dredged areas. Depths. Mooring buoys. Legend. Coastline. Cautionary note. Wrecks.

Source: Maritime and Port Authority of Singapore

Chart 4031 [*previous update 5495/11*] WGS84 DATUM

Insert the accompanying block, showing a new jetty, berths, dredged area and amendments to depths, centred on: 1° 15'·325N., 103° 41'·270E.

Chart 4032 [*previous update 119/12*] WGS84 DATUM

Insert the accompanying block, showing a new jetty, berths, dredged area and amendments to depths, centred on: 1° 15'·350N., 103° 41'·250E.

 **Fl.Y.4s MB1** 1° 15'·589N., 103° 43'·528E.

 **Fl.Y.4s MB2** 1° 15'·549N., 103° 43'·391E.

Delete former **MB1** mooring buoy 1° 15'·667N., 103° 43'·785E.

former **MB2** mooring buoy 1° 15'·579N., 103° 43'·599E.

 **Fl.Y.4s MB3** 1° 15'·548N., 103° 43'·450E.

 **Fl.Y.4s MB4** 1° 15'·647N., 103° 43'·635E.

Chart 4033 [*previous update 5495/11*] WGS84 DATUM

Insert the accompanying block, showing a new legend, dredged area and amendments to coastline and depths, centred on: 1° 16'·675N., 103° 39'·945E.

Chart 4034 [*previous update 390/12*] WGS84 DATUM

Insert  **Fl.Y.4s MB1** 1° 15'·589N., 103° 43'·528E.

 **Fl.Y.4s MB2** 1° 15'·549N., 103° 43'·391E.

Delete former **MB1** mooring buoy 1° 15'·667N., 103° 43'·785E.

former **MB2** mooring buoy 1° 15'·579N., 103° 43'·599E.

 **Fl.Y.4s MB3** 1° 15'·548N., 103° 43'·450E.

 **Fl.Y.4s MB4** 1° 15'·647N., 103° 43'·635E.

Chart 4037 [*previous update 119/12*] WGS84 DATUM

Replace existing note with the accompanying note, TANJONG PAGAR TERMINAL – MAINTAINED DEPTH, centred on: 1° 16'·530N., 103° 51'·180E.

Chart 4040 [*previous update 390/12*] WGS84 DATUM

Move  **Fl.Y.4s MB1**, from: 1° 15'·67N., 103° 43'·79E.
to: 1° 15'·59N., 103° 43'·53E.

 **Fl.Y.4s MB2**, from: 1° 15'·58N., 103° 43'·60E.
to: 1° 15'·55N., 103° 43'·39E.

V
**EXTRACT OF ADMIRALTY NOTICES TO MARINERS
 FOR DUAL BADGED CHARTS**

1115* SINGAPORE – Jurong Island – Banyan Basin, Selat Pandan Westwards, West Jurong Channel, Tanjong Pagar Terminal, Pulau Batam North-westwards and Sembawang – Jetty. Berths. Dredged areas. Depths. Mooring buoys. Legend. Coastline. Cautionary note. Wrecks. (continued.)

Chart 4040 [previous update 390/12] WGS84 DATUM

| | | |
|--------|--|----------------------------|
| Delete |  <i>Fl.Y.4s MB3</i> | 1° 15'·55N., 103° 43'·45E. |
| |  <i>Fl.Y.4s MB4</i> | 1° 15'·65N., 103° 43'·64E. |

Chart 4041 [previous update 390/12] WGS84 DATUM

| | | |
|--------|----------------------|----------------------------|
| Insert | ++ Rep (2011) | 1° 14'·67N., 104° 04'·08E. |
|--------|----------------------|----------------------------|

Chart 4042 [previous update 119/12] WGS84 DATUM

| | | |
|--------|----------------------|----------------------------|
| Insert | ++ Rep (2011) | 1° 14'·67N., 104° 04'·08E. |
| | | 1° 14'·53N., 104° 04'·71E. |

Chart 4044 (plan C, Sembawang) [previous update 119/12] WGS84 DATUM

| | | |
|---------|---|------------------------------|
| Amend | dredged depth to, 10.1m (2011) , centred on: | 1° 27'·802N., 103° 50'·079E. |
| | dredged depth to, 10.7m (2011) , centred on: | 1° 27'·712N., 103° 50'·027E. |
| | | 1° 27'·736N., 103° 49'·986E. |
| | dredged depth to, 9.5m (2011) , centred on: | 1° 27'·642N., 103° 49'·987E. |
| | dredged depth to, 9.4m (2011) , centred on: | 1° 27'·620N., 103° 49'·949E. |
| | dredged depth to, 9.2m (2011) , centred on: | 1° 27'·672N., 103° 49'·949E. |
| | dredged depth to, 12.0m (2011) , centred on: | 1° 27'·823N., 103° 50'·035E. |
| Replace | depth δ_9 with depth δ_5 | 1° 27'·634N., 103° 49'·959E. |

1116* SINGAPORE – Changi East South-eastwards – Light-beacon.

Light List Vol. F, 2011/12, 1735.6

Source: Maritime and Port Authority of Singapore

Note: **Certain Copies Only**

Chart 4041 [previous update 1115/12] WGS84 DATUM

| | | | |
|--------|--|-----|----------------------------|
| Insert | symbol, white light-beacon with triangular topmark apex downwards, DirF.WRG.12m7-6M CNB | (a) | 1° 18'·48N., 104° 01'·77E. |
| | sectors at light-beacon, as follows: | | (a) above |
| | G 260.0° - 267.5° (7.5°) | | |
| | W 267.5° - 272.5° (5°) | | |
| | R 272.5° - 280.0° (7.5°) | | |

Chart 4042 [previous update 1115/12] WGS84 DATUM

| | | | |
|--------|--|-----|----------------------------|
| Insert | symbol, white light-beacon with triangular topmark apex downwards, DirF.WRG.12m7-6M CNB | (a) | 1° 18'·48N., 104° 01'·77E. |
| | sectors at light-beacon, as follows: | | (a) above |
| | G 260.0° - 267.5° (7.5°) | | |
| | W 267.5° - 272.5° (5°) | | |
| | R 272.5° - 280.0° (7.5°) | | |

V
**EXTRACT OF ADMIRALTY NOTICES TO MARINERS
FOR DUAL BADGED CHARTS**

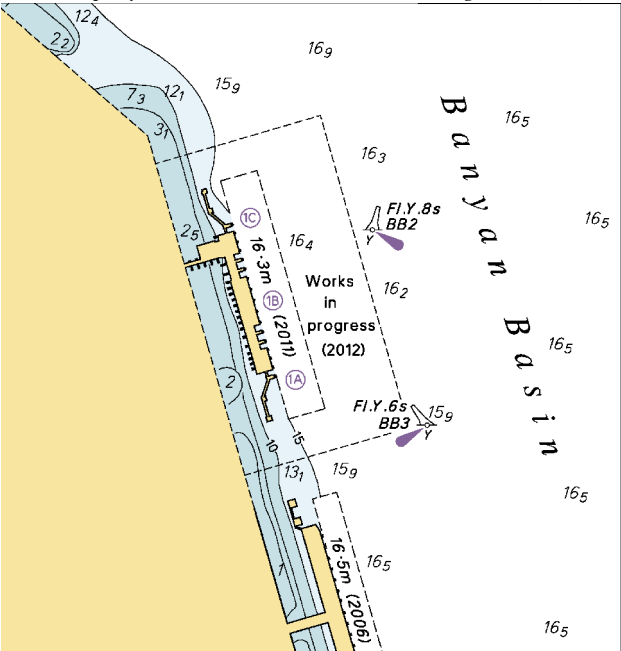
1116* SINGAPORE – Changi East South-eastwards – Light-beacon. (continued)

Chart 4043 [*previous update 119/12*] WGS84 DATUM

| | | | |
|--------|--|-----|---|
| Insert | symbol, white light-beacon with triangular topmark apex downwards, DirF.WRG.12m7-6M CNB sectors at light-beacon, as follows: G 260.0° - 267.5° (7.5°) W 267.5° - 272.5° (5°) R 272.5° - 280.0° (7.5°) | (a) | 1° 18' .48N., 104° 01' .77E. (a) above |
|--------|--|-----|---|

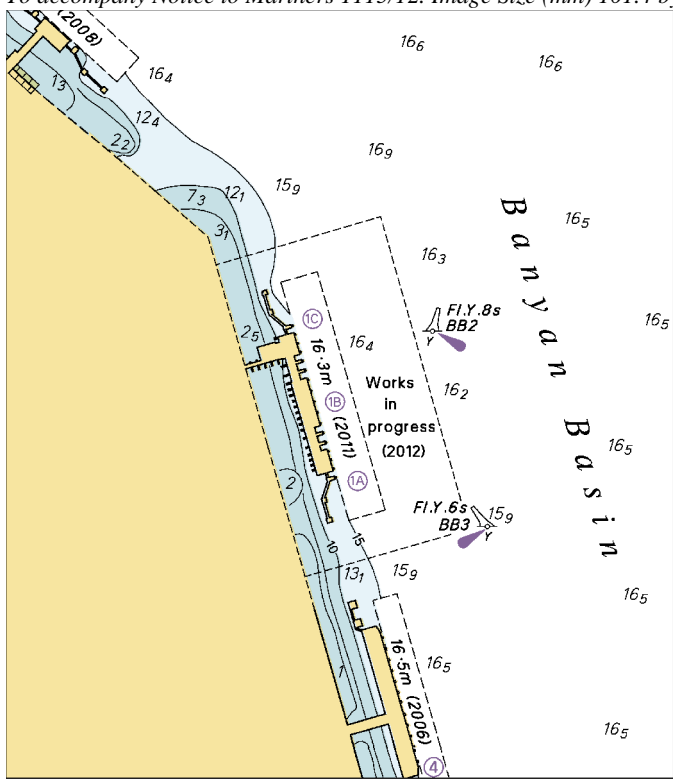
Updated to Admiralty Notices to Mariners Edition No. 13 of 2012 dated 29th March 2012.

To accompany Notice to Mariners 1115/12. Image Size (mm) 85.9 by 82



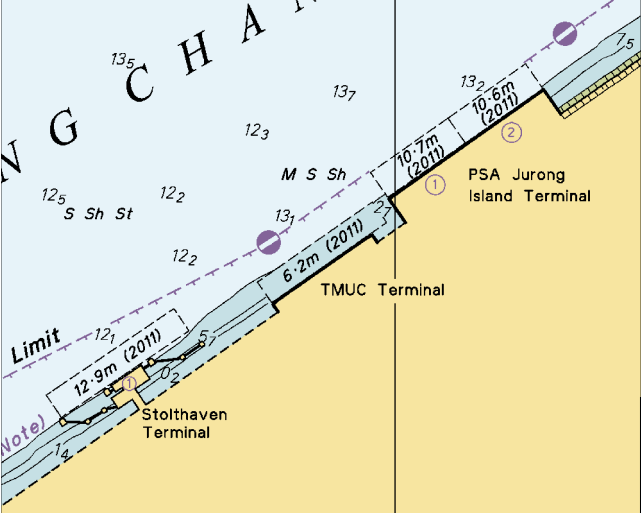
Block for Chart No 4031

To accompany Notice to Mariners 1115/12. Image Size (mm) 101.4 by 88.2



Block for Chart No 4032

To accompany Notice to Mariners 1115/12. Image Size (mm) 68.2 by 84.5



Block for Chart No 4033

To accompany Notice to Mariners 1115/12

On Chart 4037

TANJONG PAGAR TERMINAL - MAINTAINED DEPTH
The maintained depths shown at Tanjong Pagar Terminal Berths T1 to T4 are generally maintained but silting is liable to occur. For the latest information consult the Maritime and Port Authority of Singapore.

MPA ENC DISTRIBUTORS

| CONTACT PERSON/ DESIGNATION | ADDRESS | TELEPHONE/FAX NO./EMAIL/WEBSITE |
|---|---|--|
| ChartWorld GmbH ChartWorld Asia Pacific Pte Ltd. | Ruhrstrasse 90, 22761 Hamburg, Germany Frontech Centre 07-01, 15 Jalan Kilang Barat, Singapore 159357 | Tel. No.: +49 40 853 58 6942 Fax No.: +49 40 853 58 6949 Email: sales@chartworld.com Tel No.: +65 65133500 Website : http://www.chartworld.com |
| DPM (Singapore) Pte Ltd | 1 Maritime Square, #09-72 HarbourFront Centre, Singapore 099253 | Tel. No.: +65 6270 4060 Fax No.: +65 6276 3858 Email: sales@dpmsingapore.com.sg Website: http://www.dpmsingapore.com.sg |
| Maritime Information Systems (MARIS) Maritime Information Systems AS (MARIS) | 52, Telok Blangah Road #01-06, Telok Blangah House, Singapore 058809 Danholmen 25, 3128 Notteroy, Norway | Tel. No.: +65 6276 1472 Fax No.: +65 6276 1473 Email: : support@maris.sg Website: http://www.maris.no Tel. No.: +47 33 30 42 50 Fax No.: +47 33 30 42 51 Email: : sales@maris.no Website: http://www.maris.no |
| Motion Smith | 15 Jalan Kilang Barat #08-01/05 Frontech Centre, Singapore 159357 | Tel. No.: +65 6220 5098 Fax No.: +65 6225 4902 Email: sales@motsmith.com Website: http://www.motsmith.com |
| Transas Marine Pacific Pte Ltd | Cyber Centre 16 & 18 Jalan Kilang Barat Singapore 159358 | Tel. No.: +65 6271 0200 Fax No.: +65 6271 7300 Email: dominic@transas.com.sg Website: http://www.transas.com.sg |
| Vector Services Pte Ltd | 196 Pandan Loop, #06-29 Pantech Business Hub Singapore 128384 | Tel. No.: +65 6777 3602 Fax No.: +65 6777 9203 Email: kwchoy@pacific.net.sg |
| Japan Hydrographic Association Electronic Charts Division | Daiichi Sogo Bldg, 6F 1-6-6, Hanedakuko, Ota-ku Tokyo 144-0041, Japan | Tel. No.: +81 3 5708 7093 Fax No.: +81 3 5708 7094 Email: shimizu-6kj@jha.jp Website: http://www.jha.or.jp/en/jha/ |
| Jeppesen Norway AS | P.O Box 212 , N-4371 Egersund, Norway | Tel No.: +47 51 46 4700 Fax No: +47 51 46 4701 Email: license.marine@jeppesen.com Website : http://www.jeppesen.com/marine |
| PRIMAR STAVANGER | Lervigsveien 36, P.O Box 60, N-4001 Stavanger, Norway | Tel. No.: +47 51 93 9500 Fax No.: +47 51 93 9501 Email: sales@ecc.no Website : http://www.primar.no |
| The United Kingdom Hydrographic Office | Admiralty Way, Taunton, Somerset, TA1 2DN United Kingdom | Tel. No.: +44 1823 33 7900 Fax No.: +44 1823 28 4077 Emails: ENCs.SalesReports@ukho.gov.uk Website: http://www.ukho.gov.uk |

Chart Agents for the Maritime and Port Authority of Singapore
Nautical Charts and Publications

Please approach any of the appointed chart agent to purchase the Singapore Nautical Charts and Publications.

| CHART AGENT | ADDRESS | TELEPHONE/FAX NO./EMAIL/WEBSITE |
|--|--|--|
| DPM (Singapore) Pte Ltd | 1 Maritime Square, #09-72 HarbourFront Centre, Singapore 099253 | Tel. No.: +65 6270 4060 Fax No.: +65 6276 3858 Email: sales@dpmsingapore.com.sg Website: http://www.dpmsingapore.com.sg |
| E.W. Liner Charts & Publications Pte Ltd | 102F, Pasir Panjang Road, #08-01, Citilink Warehouse Complex, Singapore 118530 | Tel. No.: +65 6323 0773 Fax No.: +65 6323 0775 Email: ewliner@singnet.com.sg Website: http://www.ewliner.com |
| Motion Smith | 15 Jalan Kilang Barat #08-01/05 Frontech Centre Singapore 159357 | Tel. No.: +65 6220 5098 (After office hours:+65 8163 9993) Fax No.: +65 6225 4902 Email: sales@motsmith.com Website: http://www.motsmith.com |

HYDROGRAPHIC NOTE - Instructions

1. Mariners are requested to notify the Chief Hydrographer, Maritime and Port Authority of Singapore, when new or suspected dangers to navigation are discovered, changes are observed in aids to navigation or where corrections to nautical publications may be necessary. Reports, which cannot be confirmed or are lacking in certain details should not be withheld.
2. Any ambiguities of time, positioning and depth should be stressed and any firm expectation of being able to check the information provided on a following voyage should be mentioned.
3. Mariners using satellite position fixing systems, eg. GPS, should provide details of equipment and datum used (where applicable). Where bearings (true or magnetic) are taken visually or by radar to fix a position, it should include more than two objects in order to provide a check on its accuracy. A position may also be defined by bearing and distance from a conspicuous object eg. beacon, lighthouse etc.
4. The note should include a tracing or a digital image of the chart used and the details should be clearly marked.
5. Echo sounders frequently register greater depths than the advertised maximum depth for the equipment, eg. a trace appearing at 50 metres may be in fact be 550 metres or even 1050 metres for equipment whose maximum depth is 500 metres. Erroneous depths caused by 2nd transmission error can usually be recognised by the following:
 - (a) the tracing being weaker than normal for the depth registered,
 - (b) the trace appearing to pass through the transmission line,
 - (c) the feathery nature of the trace.
6. Upon receipt of a hydrographic note, a Notice to Mariners may be issued. The sender's vessel or name is quoted as the source unless the same information is also received in foreign Notices to Mariners.
7. Reports of shoals, uncharted dangers and defects in aids to navigation may also be made to the appropriate Singapore Port Operations Control Centre on VHF Channels 10, 12, 14, 68 or 73.

HYDROGRAPHIC NOTE

To:

Chief Hydrographer
Maritime and Port Authority of Singapore
460 Alexandra Road PSA Building #20-00
Singapore 119963

Tel : (65) 6375 1227
Fax : (65) 6278 7646
Email : hydrographic@mpa.gov.sg

Sender's Contact Details :

Date :

Name of Vessel :

Address of Sender :

Tel : Fax :

Email :

Nature of Observation :

General Location :

Subject :

Position : Lat. Long.

Charts Used :

Date & Time of Observation :

Details :

.....

.....

Attachment :

Equipment Used :

Type of Position Fixing : GPS / DGPS Others :

Type of Echo Sounder :

Name and Signature :

Ship's/Company's Stamp :