



SINGAPOREAN NOTICES TO MARINERS

SECTION	CONTENT	Page
I	Index of Charts & Publications	1
II	New Publications	6
	Notices to Mariners and Chart Corrections	8
	Temporary and Preliminary Notices	10
III	Navigational Information	11
	Amendments to Publications	12
IV	Reprint of Radio Navigational Warnings	14
V	Extract of Admiralty Notices to Mariners for Dual Badged Charts	15

The monthly Notices to Mariners contain corrective information affecting charts published by the Hydrographic Department, Maritime and Port Authority of Singapore. The information contained in these Notices should be updated on the charts affected. Notices under Section II apply only to the particular Singaporean Chart(s) indicated.

Mariners are requested to notify the Chief Hydrographer, Maritime and Port Authority of Singapore, immediately on the discovery of new dangers or suspected dangers to navigation and of changes or defects in aids to navigation. See Hydrographic Note on back page.

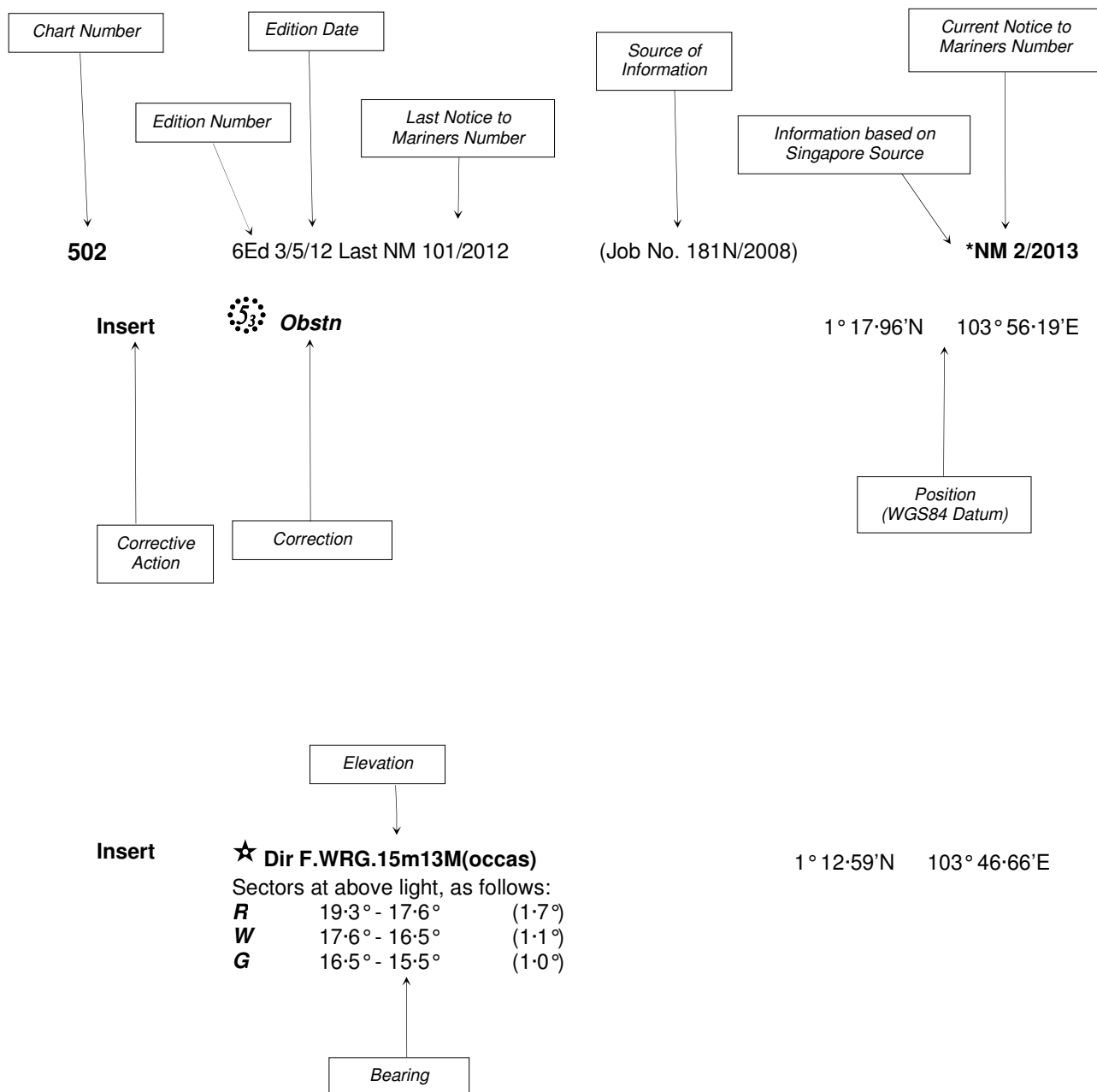
The monthly Singaporean Notices to Mariners can be accessed directly from the MPA website:
[www.mpa.gov.sg/sites/port_and_shipping/circulars_and_notices/singapore_notices_to_mariners\(ntm\).page](http://www.mpa.gov.sg/sites/port_and_shipping/circulars_and_notices/singapore_notices_to_mariners(ntm).page)

This service is offered free of charge.

Hydrographic Department
Maritime and Port Authority of Singapore
460 Alexandra Road
#20-00 PSA Building
Singapore 119963
Tel: (65) 6375 1227
Fax: (65) 6278 7646

EXPLANATION OF FORMAT

The elements of a typical chart correction are explained below.



Notes:

- a) Notice to Mariners number followed by:
T indicates a Temporary Notice (eg. ***NM 3T/2013**).
P indicates a Preliminary Notice (eg. ***NM 4P/2013**).
- b) Bearings are true reckoned clockwise from 000° to 359°; those relating to lights are from seaward.
- c) Heights and elevations are above Mean High Water Springs.

I
INDEX OF CHARTS AND PUBLICATIONS

INDEX OF AFFECTED CHARTS

DESCRIPTION	NOTICE NO.	PAGE NO.
Index of Singaporean Charts	-	3
Index of Dual Badged Charts	-	4
Index of Singapore Electronic Navigational Chart (ENC)	-	5
New Edition Dual Badged Charts	-	6, 7
Singaporean Chart GSP1/SP1	40, *41, *42, *43	8
Singaporean Chart 501	40	8
Singaporean Chart 502	40, *42, *44	9
Temporary and Preliminary Notices	*45T, 46T	10
Singapore Port Marine Notices	*47	11
Singaporean Print-On-Demand (POD) Charts	*48	11
Amendments to Publications	*49	12, 13
Reprint of Radio Navigational Warnings	-	14
Extract of Admiralty Notices to Mariners for Dual Badged Charts	-	15 to 17
Singapore Electronic Navigational Chart (ENC) Distributors	-	18
Chart Agents for the Maritime and Port Authority of Singapore Nautical Charts and Publications	-	19

*Denotes information are based on Singaporean source.

I
INDEX OF CHARTS AND PUBLICATIONS

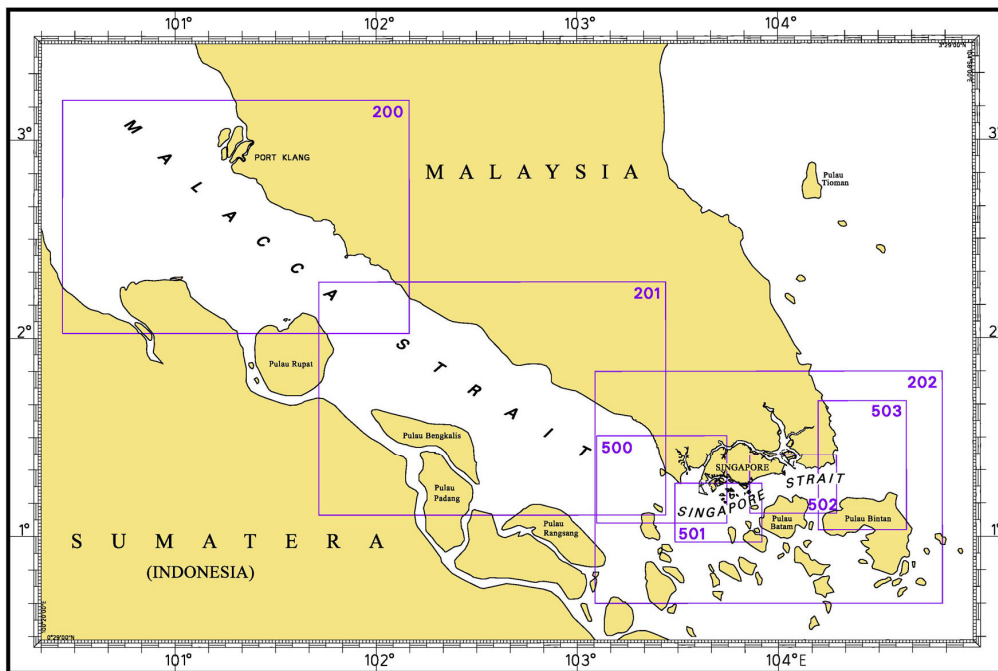
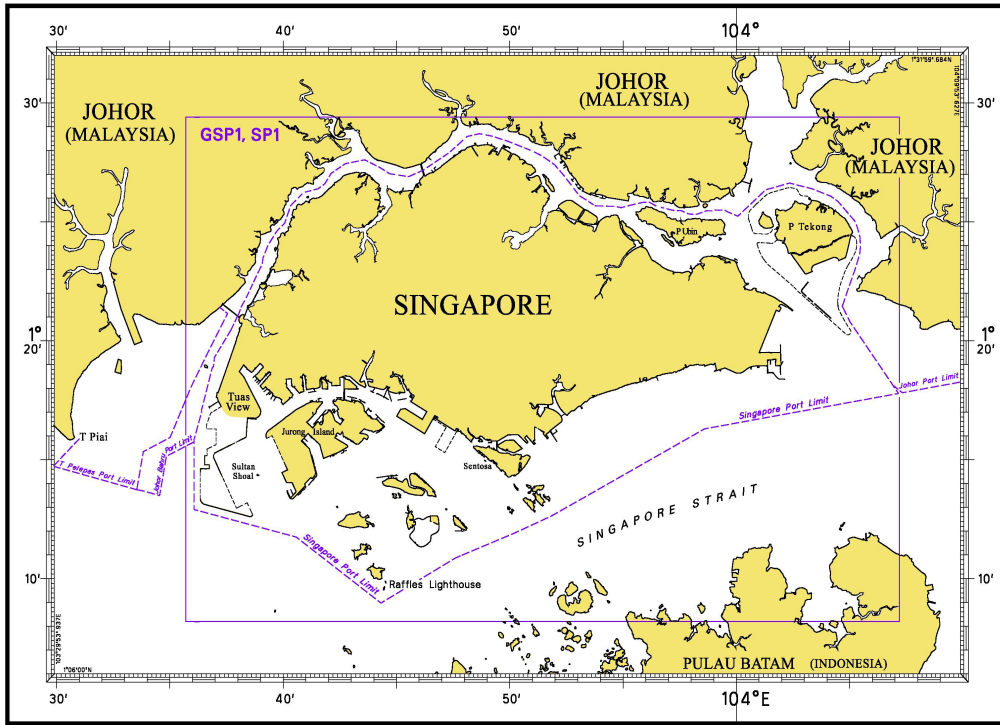
INDEX OF NOTICES

NOTICE NO.	DESCRIPTION	PAGE NO.
-	Index of Singaporean Charts	3
-	Index of Dual Badged Charts	4
-	Index of Singapore Electronic Navigational Chart (ENC)	5
-	New Edition Dual Badged Charts	6, 7
40, *41, *42, *43	Singaporean Chart GSP1/SP1	8
40	Singaporean Chart 501	8
40, *42, *44	Singaporean Chart 502	9
*45T, *46T	Temporary and Preliminary Notices	10
*47	Singapore Port Marine Notices	11
*48	Singaporean Print-On-Demand (POD) Charts	11
*49	Amendments to Publications	12, 13
-	Reprint of Radio Navigational Warnings	14
-	Extract of Admiralty Notices to Mariners for Dual Badged Charts	15 to 17
-	Singapore Electronic Navigational Chart Distributors	18
-	Chart Agents for the Maritime and Port Authority of Singapore Nautical Charts and Publications	19

* Denotes information are based on Singaporean source.

I INDEX OF CHARTS AND PUBLICATIONS

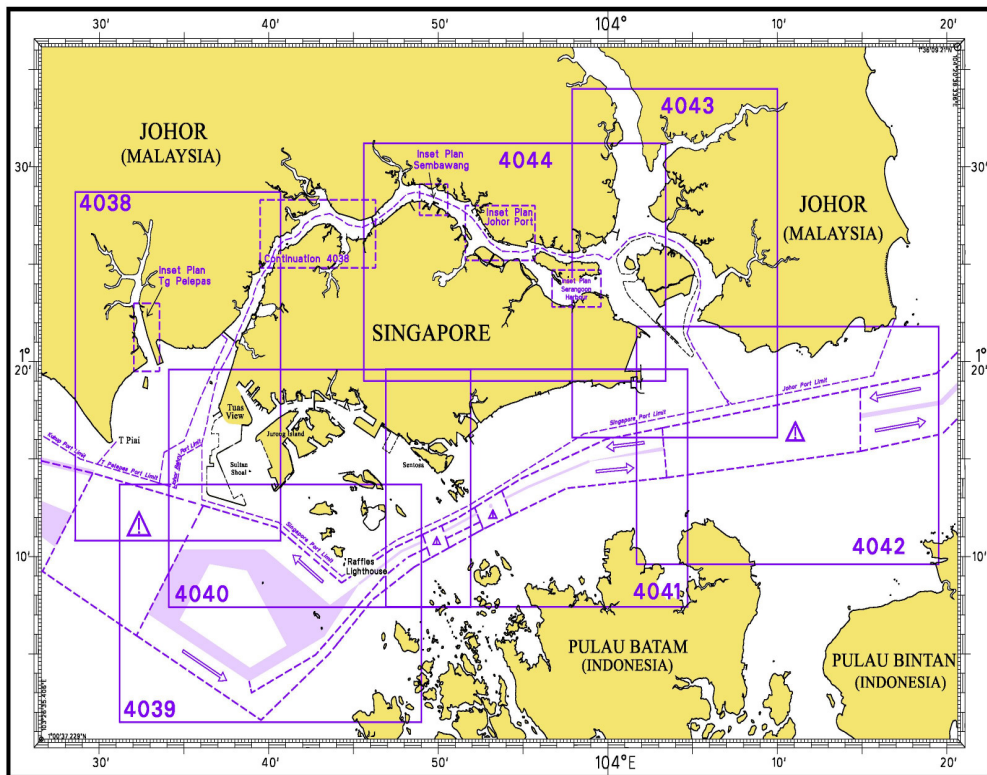
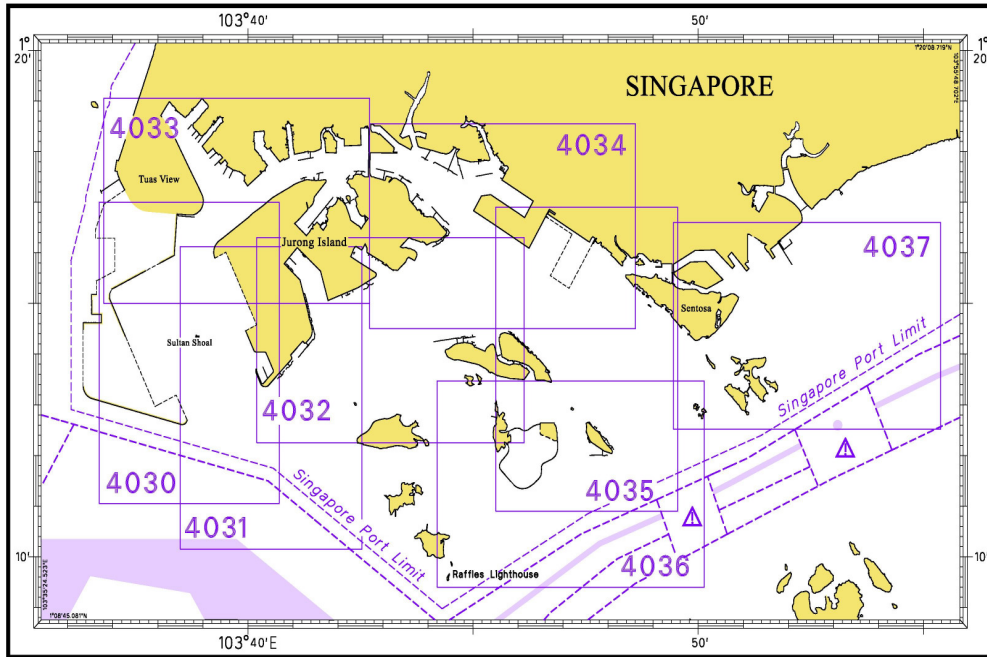
INDEX OF SINGAPOREAN CHARTS



Notes:
Updated SINGAPOREAN Charts are available through our Print-On-Demand (POD) Chart Service. For more information, refer to Section III – Navigational Information. These charts can be purchased from our authorised Chart Agents.

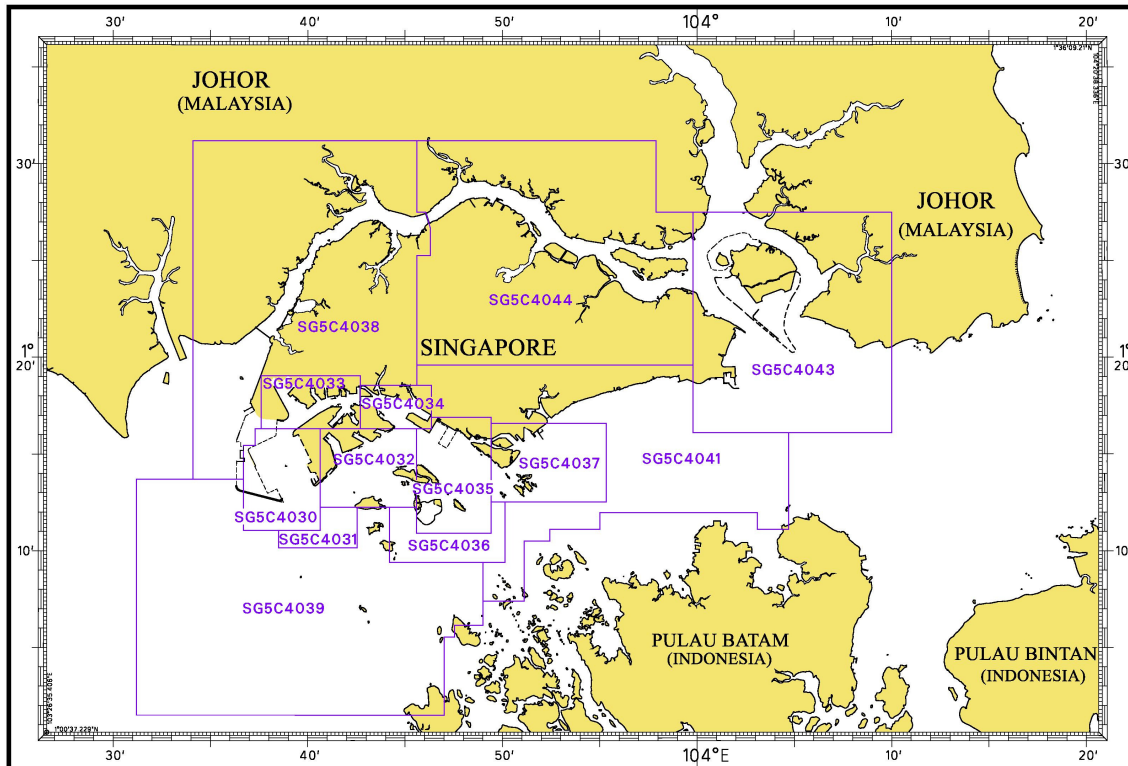
I INDEX OF CHARTS AND PUBLICATIONS

INDEX OF DUAL BADGED CHARTS



I INDEX OF CHARTS AND PUBLICATIONS

INDEX OF SINGAPORE ELECTRONIC NAVIGATIONAL CHART (ENC)



COVERAGE OF SINGAPORE ELECTRONIC NAVIGATIONAL CHART (ENC)

ENC Name	ENC Coverage	ENC Edition
SG5C4030	West Jurong Anchorages and Temasek Fairway	5 th Edition (3/05/2012)
SG5C4031	Western Approaches to Jurong Island	5 th Edition (3/05/2012)
SG5C4032	Sinki Fairway	7 th Edition (3/05/2012)
SG5C4033	Tuas Bay, West Jurong Channel and Pesek Basin	5 th Edition (3/05/2012)
SG5C4034	East Jurong Channel, Pasir Panjang Terminal and West Keppel Fairway	10 th Edition (3/05/2012)
SG5C4035	Western Anchorages, Jong Fairway and Cruise Bay	12 th Edition (27/09/2012)
SG5C4036	Raffles Lighthouse to The Sisters	6 th Edition (3/05/2012)
SG5C4037	Keppel Harbour, Tanjong Pagar Terminal and Approaches	6 th Edition (3/05/2012)
SG5C4038	Johor Strait – Western Part	5 th Edition (3/05/2012)
SG5C4039	Western Approaches to Main Strait	5 th Edition (3/05/2012)
SG5C4041	Pulau Sebarok to Changi	6 th Edition (3/05/2012)
SG5C4043	Kuala Johor and Sungai Johor	8 th Edition (16/08/2012)
SG5C4044	Johor Strait – Eastern Part	8 th Edition (16/08/2012)

II NEW PUBLICATIONS

NEW EDITION DUAL BADGED CHARTS TO BE PUBLISHED ON 11TH APRIL AND 25TH APRIL 2013

Chart Number	:	4034	
Title	:	Port of Singapore East Jurong Channel, Pasir Panjang Terminal and West Keppel Fairway	
Coverage	:	Lat 01° 14.50' N 01° 18.55' N Long 103° 42.70' E 103° 48.60' E	
Scale	:	1: 10 000	
Date Published	:	11 th April 2013	
Size of Chart	:	1094.3 x 746.3 mm	
Remarks	:	This new edition includes updated surveys covering these areas :	
		<ul style="list-style-type: none"> • Pasir Panjang Terminal and Basin • East of Damar Laut Causeway • East Jurong Channel –northeast of Cyrene Reef • West Keppel Fairway • Sakra Basin 	

The existing chart of the same number published on 29th September 2011 will be superseded.

Chart Number	:	4036	
Title	:	Port of Singapore Raffles Lighthouse to The Sisters	
Coverage	:	Lat 01° 09.40' N 01° 13.47' N Long 103° 44.20' E 103° 50.13' E	
Scale	:	1: 10 000	
Date Published	:	25 th April 2013	
Size of Chart	:	1100.0 x 750.1 mm	
Remarks	:	This new edition includes updated surveys covering these areas :	
		<ul style="list-style-type: none"> • Jong Fairway • West of Pulau Sebarok • Shell SBM 	

The existing chart of the same number published on 28th April 2011 will be superseded.

II NEW PUBLICATIONS

NEW EDITION DUAL BADGED CHART TO BE PUBLISHED ON 25TH APRIL 2013

Chart Number : 4037
Title : Port of Singapore
Keppel Harbour, Tanjong Pagar Terminal and Approaches
Coverage : Lat 01° 12.52' N 01° 16.59' N
Long 103° 49.40' E 103° 55.34' E
Scale : 1: 10 000
Date Published : 25th April 2013
Size of Chart : 1101.8 x 750.1 mm
Remarks : This new edition includes updated surveys covering these areas :

- East Keppel Fairway
- Eastern Anchorage
- Approaches to Tanjong Pagar Terminal
- Marina South Pier
- Approaches to Eastern Corridor

The existing chart of the same number published on 28th April 2011 will be superseded.

II NOTICES TO MARINERS AND CHART CORRECTIONS

GSP1/SP1 7 Ed 3/05/12 Last NM 34/2013 (Admiralty Notice 13/1443/2013) **NM 40/2013**

Insert	 LFl.10s	1°09'94"N	103°54'74"E
Delete	 Iso.4s	1°09'54"N	103°55'15"E

(Government Gazette No.S 519/2006) ***NM 41/2013**

Note: This notice are to supplement for missing Live Firing limit on certain printed charts, due to technical error in printing.

Insert	limit of Live Firing Area, dash line joining:	1°21'14"N	103°38'34"E
		(shore)	
		1°21'22"N	103°38'12"E
		1°21'42"N	103°38'19"E
		1°21'75"N	103°38'39"E
		1°22'77"N	103°38'89"E
		1°23'21"N	103°39'12"E
		1°23'46"N	103°39'15"E
		1°24'00"N	103°39'36"E
		1°24'60"N	103°39'76"E
		1°24'92"N	103°40'10"E
		1°25'66"N	103°40'37"E
		1°26'19"N	103°40'92"E
		1°26'33"N	103°41'49"E
		1°26'01"N	103°41'60"E
		(shore)	

(HD/HE025/26 to 30/2013) ***NM 42/2013**

Insert	 Fl.Y.4s NEA - SLT	1°26'90"N	103°51'80"E
	 Fl.Y.4s NEA - SRG	1°23'20"N	103°57'22"E
	 Fl.Y.4s NEA - CHG	1°20'71"N	104°04'98"E
	 Fl.Y.4s NEA - ECP	1°18'39"N	103°57'20"E
	 Fl.Y.2s NEA - PTK	1°25'69"N	104°00'66"E




(HD/HE025/19/2013) ***NM 43/2013**

Delete	 Fl(2)Y.4s Helios 1	1°13'98"N	103°40'12"E
---------------	---	-----------	-------------

501 6 Ed 3/05/12 Last NM 33/2013 (Admiralty Notice 13/1443/2013) **NM 40/2013**

Insert	 LFl.10s	1°09'94"N	103°54'74"E
---------------	--	-----------	-------------

II
NOTICES TO MARINERS AND CHART CORRECTIONS

502	6 Ed 3/05/12 Last NM 28/2013	(Admiralty Notice 13/1443/2013)	NM 40/2013
Insert	 LFl.10s		1°09·94'N 103°54·74'E
Delete	 Iso.4s		1°09·54'N 103°55·15'E
		(HD/HE025/28/2013)	*NM 42/2013
Insert	 Fl.Y.4s NEA - CHG		1°20·71'N 104°04·98'E
		(MPA, Hydrographic Dept.)	*NM 44/2013
Delete	legend 'Dredging Area (see Note)' at		1°15·56'N 104°00·27'E
	legend notes 'Dredging Area (1°15·5'N 104°00·5'E)' centred at		1°24·08'N 104°15·04'E

II TEMPORARY AND PRELIMINARY NOTICES

***(NM 45T/2013) Installation of Mooring Buoys at Pasir Panjang Terminal Phase 3 and 4 Working Area.**

1. The positions of the mooring buoys are as follows :

Buoys	(Co-ordinates: WGS84)		Light Characteristic	Remarks
	Latitude (N)	Longitude (E)		
PPT - MB3	01° 15.969' N	103° 46.813' E	Fl.Y.5s	Synchronise light
PPT - MB4	01° 15.806' N	103° 46.716' E	Fl.Y.5s	Synchronise light

2. The deployment duration of these buoys will be for a period of seven to eight months from January till August 2013.
3. **Charts affected** : GSP1, SP1, 4034, 4035 and 4040.

Source : HD/HE025/13 & 14/2013.

***(NM 46T/2013) Installation of Mooring Buoys at Reclamation Working Area at Pulau Tekong.**

1. The positions of the mooring buoys are as follows :

Buoys	(Co-ordinates: WGS84)		Light Characteristic	Remarks
	Latitude (N)	Longitude (E)		
TK - MB3	01° 22.146' N	104° 02.518' E	Fl.Y.4s	Synchronise light
TK - MB4	01° 22.269' N	104° 02.380' E	Fl.Y.4s	Synchronise light

2. The deployment duration of these buoys will be for a period of eight months from March to October 2013.
3. **Charts affected** : GSP1, SP1, 4043 and 4044.

Source : HD/HE025/23 & 24/2013.

III NAVIGATIONAL INFORMATION

***(NM 47/2013) SINGAPORE PORT MARINE NOTICES**

The following Port Marine Notices have been shortlisted, as they would be of particular interest to mariners.

These notices can be accessed directly from MPA website:
www.mpa.gov.sg/sites/port_and_shipping/circulars_and_notices/port_marine_notices.page

PMN No.	Subject
20/2013	Mooring and unmooring of vessels at mooring buoys off Pulau Tekong reclamation area.
21/2013	Submarine cable repair off Pulau Busing, Selat Sinki.
25/2013	Reclamation of Jurong Island Phase 4 and construction of Jetty off Temasek Fairway.

***(NM 48/2013) SINGAPOREAN PRINT-ON-DEMAND (POD) CHARTS**

Print-On-Demand (POD) Charts are the most up-to-date paper nautical charts printed for navigational use. These nautical charts are produced in accordance with the International Hydrographic Organisation (IHO) chart specifications. These official nautical charts are continually updated to the latest Notices to Mariners before they are printed and sold to users.

These POD Charts include GSP1, SP1, 200, 201, 202, 500, 501, 502 and 503.

BENEFITS TO OUR CUSTOMERS

Convenience

Customers need not make numerous hand corrections to the nautical charts before use. In addition the updated POD Charts are more accurate and reliable than offset printed charts with hand corrections.

Clarity

Clarity in the presentation of updated information as compared to lithographic printed charts, where in some cases there are several overlapping corrections over existing information.

Coverage

The POD Charts cover the Malacca and Singapore Straits, from One Fathom Bank to Horsburgh Lighthouse.

**III
AMENDMENTS TO PUBLICATIONS**

***(NM 49/2013) UPDATING OF PUBLICATION "SINGAPORE PORT INFORMATION 2012/2013"**

1. Page 129

CHARACTERISTICS OF AIDS TO NAVIGATION

Delete the following:

Name of Beacon/Buoy	Position Lat. N Long. E Deg Min	Structure Colour & Shape	Light Characteristic	Owner
Helios 1 Buoy	01 13.980 103 40.120	Yellow pillar	FI(2)Y.4s	Samsung C&T Corporation (SLNG Terminal)

Source: HD/HE025/19/2013

2. Page 135

Amend the following:

Name of Beacon/Buoy	Position Lat. N Long. E Deg Min	Structure Colour & Shape	Light Characteristic	Owner
PKHV4 Buoy	01 16.620 103 46.649	Yellow pillar	FI(2)Y.4s	Penta

Source: Port Marine Notice 94/2012

3. Page 165 – Item 22

Amend the following:

JURONG TERMINAL, PULAU DAMAR LAUT (JURONG PORT PTE LTD)(1°18.3'N, 103°43.1'E)

Berth	Length of Berth	Max LOA	Depth Alongside (Year Surveyed)	Controlling Depth In Approaches
J1	172m	-	2.5m (2013)	4.7m

Source: HD/HY Code J00100613

4. Page 175 – Item 49

CAFHI JETTY – TANJONG CHANGI (1°23.4'N, 103°59.9'E)

Amend the following:

Berth	Length of Berth	Max LOA Depth Alongside (Year Surveyed)	Controlling Depth In Approaches
CAFHI Jetty Berth 1	170m	7.2m (2013)	8.5m
CAFHI Jetty Berth 2	170m	9.4m (2013)	9.4m
Firemen Jetty	20m	3.2m (1987)	-

Source: Berth List

III
AMENDMENTS TO PUBLICATIONS

5. Page 198

MPA APPOINTED ELECTRONIC NAVIGATIONAL CHART (ENC) DISTRIBUTORS

DISTRIBUTOR	ADDRESS	TELEPHONE/FAX NO./EMAIL /WEBSITE
Transas Marine Pacific Pte Ltd	Cyber centre 16/18 Jalan Kilang Barat Off Jalan Bukit Merah Singapore 159358	Tel. No.: +65 6271 0200 Fax No.: +65 6271 7300 Email: navigation.asia@transas.com Website: http://www.transas.com
DPM (Singapore) Pte Ltd	2 Boon Leat Terrace, #05-02/03 Harbourside 2, Singapore 119844	Tel. No.: +65 6270 4060 Fax No.: +65 6276 3858 Email: sales@dpmsingapore.com.sg Website: http://www.dpmsingapore.com.sg

Source: Transas Marine Pacific Pte Ltd
DPM (Singapore) Pte Ltd

IV
REPRINT OF RADIO NAVIGATIONAL WARNINGS

The following Radio Navigational Warnings have been shortlisted, as they would be of particular interest to mariners.

TT071

REPORT OF A CAPSIZED SAMPAN AT APPROXIMATE POSITION 01°07'08"N 103°41'93"E.

TT173

VESSELS IN EAST JOHOR STRAIT ARE ADVISED TO NAVIGATE WITH CAUTION WHEN NEAR THE PROJECT AREAS OFF PULAU TEKONG, CHANGI AND MALANG PAPAN AS SHALLOW WATER AREAS EXIST. VESSELS ARE ADVISED TO KEEP LOOKOUT FOR TUGS AND BARGES NAVIGATING NEAR THE PROJECT AREAS AND PASSENGER FERRIES CROSSING BETWEEN CHANGI AND PULAU TEKONG AND VICINITY OF PASIR GUDANG.

TT961

VESSELS INTENDING TO CROSS THE TRAFFIC SEPARATION SCHEME(TSS) OR PRECAUTIONARY AREAS IN THE SINGAPORE STRAIT DURING THE HOURS OF DARKNESS ARE RECOMMENDED TO DISPLAY THE NIGHT SIGNALS CONSISTING OF 3 ALL-ROUND GREEN LIGHTS IN A VERTICAL LINE WITH EFFECT FROM 1ST JULY 2011 AT 0000UTC (0800SGT) AS DETAILED IN MARITIME AND PORT AUTHORITY OF SINGAPORE'S PORT MARINE CIRCULAR, 02 OF 2011 DATED 30 MAY 2011.

ISSUED BY SINGAPORE PORT OPERATIONS CONTROL CENTRE (as at 24th March 2013)

V
**EXTRACT OF ADMIRALTY NOTICES TO MARINERS
 FOR DUAL BADGED CHARTS**

These notices can also be accessed directly from UKHO Website:
www.ukho.gov.uk/ProductsandServices/MaritimeSafety/Pages/NMPublic.aspx

1104 SINGAPORE – Jurong Island – Temasek Fairway Eastwards – Buoy.

Source: Maritime and Port Authority of Singapore

Chart 4030 [previous update 718/13] WGS84 DATUM

Insert	 Fl.G.4s Jurong Dua	1° 14'·672N., 103° 39'·613E.
Delete	former  Fl.G.4s Jurong Dua	1° 14'·862N., 103° 39'·524E.

Chart 4031 [previous update 718/13] WGS84 DATUM

Insert	 Fl.G.4s Jurong Dua	1° 14'·672N., 103° 39'·613E.
Delete	former  Fl.G.4s Jurong Dua	1° 14'·862N., 103° 39'·524E.

Chart 4038 [previous update 253/13] WGS84 DATUM

Move	 Fl.G.4s Jurong Dua , from:	1° 14'·86N., 103° 39'·52E.
	to:	1° 14'·67N., 103° 39'·61E.

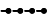
Chart 4040 [previous update 718/13] WGS84 DATUM

Move	 Fl.G.4s Jurong Dua , from:	1° 14'·86N., 103° 39'·52E.
	to:	1° 14'·67N., 103° 39'·61E.

1105 SINGAPORE – West Jurong Channel – Tanjong Gul South-eastwards – Submarine pipeline. Legend

Source: Maritime and Port Authority of Singapore

Chart 4033 [previous update 4171/12] WGS84 DATUM

Insert	Submarine pipeline,  , joining:	(a) 1° 17'·131N., 103° 40'·619E.
		(b) 1° 17'·607N., 103° 40'·368E.
	legend, Water (buried) , along:	(a)-(b) above

1107 SINGAPORE – Pulau Sebarok Eastwards, Buran Channel and Keppel Terminal – Wreck. Buoy. Landmark.

Source: Maritime and Port Authority of Singapore

Chart 4035 [previous update 253/13] WGS84 DATUM

Replace	 Wk with  Wk	1° 12'·078N., 103° 48'·221E.
---------	--	------------------------------

Chart 4036 [previous update 253/13] WGS84 DATUM

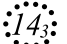
Replace	 Wk with  Wk	1° 12'·078N., 103° 48'·221E.
---------	--	------------------------------

Chart 4037 [previous update 2367/12] WGS84 DATUM

Insert	 Fl.R.6s Sentosa	1° 14'·583N., 103° 50'·639E.
--------	--	------------------------------

V
**EXTRACT OF ADMIRALTY NOTICES TO MARINERS
 FOR DUAL BADGED CHARTS**

**1107 SINGAPORE – Pulau Sebarok Eastwards, Buran Channel and Keppel Terminal – Wreck. Buoy.
 Landmark. (continued)**

Source: Maritime and Port Authority of Singapore

Chart 4039 [*previous update 253/13*] WGS84 DATUM

Replace  *Wk* with  *Wk* 1° 12'·08N., 103° 48'·22E.

Chart 4040 [*previous update 1104/13*] WGS84 DATUM

Insert  **FI.R.6s Sentosa** 1° 14'·58N., 103° 50'·64E.

Replace  *Wk* with  *Wk* 1° 12'·08N., 103° 48'·22E.

Delete Symbol, Harbour Master's office, (MRCC) (91) 1° 16'·28N., 103° 50'·55E.

Chart 4041 [*previous update 718/13*] WGS84 DATUM

Insert  **FI.R.6s Sentosa** 1° 14'·58N., 103° 50'·64E.

Replace  *Wk* with  *Wk* 1° 12'·08N., 103° 48'·22E.

Delete symbol, Harbour Master's office, (MRCC) (91) 1° 16'·28N., 103° 50'·55E.

1108 SINGAPORE – Changi East – Changi Naval Base – Buoyage.

Source: Maritime and Port Authority of Singapore

Chart 4041 [*previous update 1107/13*] WGS84 DATUM

Insert  **Q.Y CNB-5** 1° 19'·49N., 104° 02'·38E.

Amend *CNB-4* light-buoy to, **Q.Y** 1° 18'·72N., 104° 02'·40E.

Delete  *Q.Y CNB-1* 1° 18'·65N., 104° 00'·98E.

Chart 4042 [*previous update 1106/13*] WGS84 DATUM

Insert  **Q.Y CNB-5** 1° 19'·49N., 104° 02'·38E.

Amend *CNB-4* light-buoy to, **Q.Y** 1° 18'·72N., 104° 02'·40E.

Chart 4043 [*previous update 1106/13*] WGS84 DATUM

Insert  **Q.Y CNB-5** 1° 19'·49N., 104° 02'·38E.

Amend *CNB-4* light-buoy to, **Q.Y** 1° 18'·72N., 104° 02'·40E.

Delete  *Q.Y CNB-1* 1° 18'·65N., 104° 00'·98E.

Chart 4044 [*previous update New Edition 16/08/2012*] WGS84 DATUM

Insert  **Q.Y CNB-5** 1° 19'·49N., 104° 02'·38E.

V
**EXTRACT OF ADMIRALTY NOTICES TO MARINERS
FOR DUAL BADGED CHARTS**

1443 INDONESIA – Sumatera – Pulau Batam, North Coast – Selat Bulan - Buoyage.

Source: Indonesian Chart 106

Chart 4041 [*previous update 1108/13*] WGS84 DATUM

Insert	 <i>LFl.10s</i>	1° 09'·94N., 103° 54'·74E.
Delete	 <i>Iso.4s</i>	1° 09'·55N., 103° 55'·14E.

Updated to Admiralty Notices to Mariners Edition No. 13 of 2013 dated 28th March 2013.

MPA ENC DISTRIBUTORS

ENC DISTRIBUTOR	ADDRESS	TELEPHONE/FAX NO./EMAIL/WEBSITE
<p>ChartWorld GmbH</p> <p>ChartWorld Asia Pacific Pte Ltd.</p>	<p>Atlantic Haus, Zirkusweg 1 D-20359 Hamburg Germany</p> <p>Frontech Centre 07-01, 15 Jalan Kilang Barat, Singapore 159357</p>	<p>Tel. No.: +49 40 853 58 6942 Fax No.: +49 40 853 58 6949 Email: sales@chartworld.com</p> <p>Tel No.: +65 6513 3500</p> <p>Website : http://www.chartworld.com http://www.ecdis-as-a-service.com</p>
DPM (Singapore) Pte Ltd	2 Boon Leat Terrace, #05-02/03 Harbourside 2, Singapore 119844	Tel. No.: +65 6270 4060 Fax No.: +65 6276 3858 Email: sales@dpmsingapore.com.sg Website: http://www.dpmsingapore.com.sg
<p>Maritime Information Systems (MARIS)</p> <p>Maritime Information Systems AS (MARIS)</p>	<p>52, Telok Blangah Road #01-06, Telok Blangah House, Singapore 058809</p> <p>Danholmen 25, 3128 Notteroy, Norway</p>	<p>Tel. No.: +65 6276 1472 Fax No.: +65 6276 1473 Email: : support@maris.sg Website: http://www.maris.no</p> <p>Tel. No.: +47 33 30 42 50 Fax No.: +47 33 30 42 51 Email: : sales@maris.no Website: http://www.maris.no</p>
Motion Smith	15 Jalan Kilang Barat #08-01/05 Frontech Centre, Singapore 159357	Tel. No.: +65 6220 5098 Fax No.: +65 6225 4902 Email: sales@motsmith.com Website: http://www.motsmith.com
Transas Marine Pacific Pte Ltd	Cyber Centre 16/18 Jalan Kilang Barat Off Jalan Bukit Merah Singapore 159358	Tel. No.: +65 6271 0200 Fax No.: +65 6271 7300 Email: navigation.asia@transas.com Website: http://www.transas.com
Japan Hydrographic Association (Electronic Charts Division)	Daiichi Sogo Bldg, 6F 1-6-6, Hanedakuko, Ota-ku Tokyo 144-0041, Japan	Tel. No.: +81 3 5708 7093 Fax No.: +81 3 5708 7094 Email: shimizu-6ki@jha.jp Website: http://www.jha.or.jp/en/jha/
Jeppesen Norway AS	P.O Box 212 , N-4371 Egersund, Norway	Tel No.: +47 51 46 4700 Fax No: +47 51 46 4701 Email: license.marine@jeppesen.com Website : http://www.jeppesen.com/marine
PRIMAR STAVANGER	Lervigsveien 36, P.O Box 60, N-4001 Stavanger, Norway	Tel. No.: +47 51 93 9500 Fax No.: +47 51 93 9501 Email: sales@ecc.no Website : http://www.primar.no
The United Kingdom Hydrographic Office	Admiralty Way, Taunton, Somerset, TA1 2DN United Kingdom	Tel. No.: +44 1823 33 7900 Fax No.: +44 1823 28 4077 Emails: ENCS.SalesReports@ukho.gov.uk Website: http://www.ukho.gov.uk

Chart Agents for the Maritime and Port Authority of Singapore
Nautical Charts and Publications

Please approach any of the appointed chart agents to purchase the Singapore Nautical Charts and Publications.

CHART AGENT	ADDRESS	TELEPHONE/FAX NO./EMAIL/WEBSITE
Cornes (Singapore) Pte Ltd	10 Anson Road #23-06/6A International Plaza Singapore 079903	Tel. No.: +65 6223 8320 Fax No.: +65 6223 8321 Email: sales9850@cspl.sg Website: http://www.cornes-charts.com
DPM (Singapore) Pte Ltd	2 Boon Leat Terrace, #05-02/03 Harbourside 2, Singapore 119844	Tel. No.: +65 6270 4060 Fax No.: +65 6276 3858 Email: sales@dpmsingapore.com.sg Website: http://www.dpmsingapore.com.sg
E.W. Liner Charts & Publications Pte Ltd	102F, Pasir Panjang Road, #08-01, Citilink Warehouse Complex, Singapore 118530	Tel. No.: +65 6323 0773 Fax No.: +65 6323 0775 Email: ewliner@singnet.com.sg Website: http://www.ewliner.com
Kelvin Hughes (Singapore) Pte Ltd	896 Dunearn Road #03-05 Sime Darby Centre Singapore 589472	Tel. No.: +65 6545 9880 Fax No.: +65 6545 8892 Email: leslie.khoo@kelvinhughes.com.sg Website: http://www.kelvinhughes.com
Motion Smith	15 Jalan Kilang Barat #08-01/05 Frontech Centre Singapore 159357	Tel. No.: +65 6220 5098 (After office hours:+65 8163 9993) Fax No.: +65 6225 4902 Email: sales@motsmith.com Website: http://www.motsmith.com

HYDROGRAPHIC NOTE - Instructions

1. Mariners are requested to notify the Chief Hydrographer, Maritime and Port Authority of Singapore, when new or suspected dangers to navigation are discovered, changes are observed in aids to navigation or where corrections to nautical publications may be necessary. Reports, which cannot be confirmed or are lacking in certain details should not be withheld.
2. Any ambiguities of time, positioning and depth should be stressed and any firm expectation of being able to check the information provided on a following voyage should be mentioned.
3. Mariners using satellite position fixing systems, eg. GPS, should provide details of equipment and datum used (where applicable). Where bearings (true or magnetic) are taken visually or by radar to fix a position, it should include more than two objects in order to provide a check on its accuracy. A position may also be defined by bearing and distance from a conspicuous object eg. beacon, lighthouse etc.
4. The note should include a tracing or a digital image of the chart used and the details should be clearly marked.
5. Echo sounders frequently register greater depths than the advertised maximum depth for the equipment, eg. a trace appearing at 50 metres may be in fact be 550 metres or even 1050 metres for equipment whose maximum depth is 500 metres. Erroneous depths caused by 2nd transmission error can usually be recognised by the following:
 - (a) the tracing being weaker than normal for the depth registered,
 - (b) the trace appearing to pass through the transmission line,
 - (c) the feathery nature of the trace.
6. Upon receipt of a hydrographic note, a Notice to Mariners may be issued. The sender's vessel or name is quoted as the source unless the same information is also received in foreign Notices to Mariners.
7. Reports of shoals, uncharted dangers and defects in aids to navigation may also be made to the appropriate Singapore Port Operations Control Centre on VHF Channels 10, 12, 14, 68 or 73.

HYDROGRAPHIC NOTE

To:

Chief Hydrographer
Maritime and Port Authority of Singapore
460 Alexandra Road PSA Building #20-00
Singapore 119963

Tel : (65) 6375 1227
Fax : (65) 6278 7646
Email : hydrographic@mpa.gov.sg

Sender's Contact Details :

Date :

Name of Vessel :

Address of Sender :

Tel : Fax :

Email :

Nature of Observation :

General Location :

Subject :

Position : Lat. Long.

Charts Used :

Date & Time of Observation :

Details :

.....

.....

Attachment :

Equipment Used :

Type of Position Fixing : GPS / DGPS Others :

Type of Echo Sounder :

Name and Signature :

Ship's/Company's Stamp :