



SINGAPOREAN NOTICES TO MARINERS

SECTION	CONTENT	Page
I	Index of Charts & Publications	1
II	New Publications	6
	Notices to Mariners and Chart Corrections	9
	Temporary and Preliminary Notices	12
III	Navigational Information	13
	Amendments to Publications	14
IV	Reprint of Radio Navigational Warnings	17
V	Extract of Admiralty Notices to Mariners for Dual Badged Charts	18

The monthly Notices to Mariners contain corrective information affecting charts published by the Hydrographic Department, Maritime and Port Authority of Singapore. The information contained in these Notices should be updated on the charts affected. Notices under Section II apply only to the particular Singaporean Chart(s) indicated.

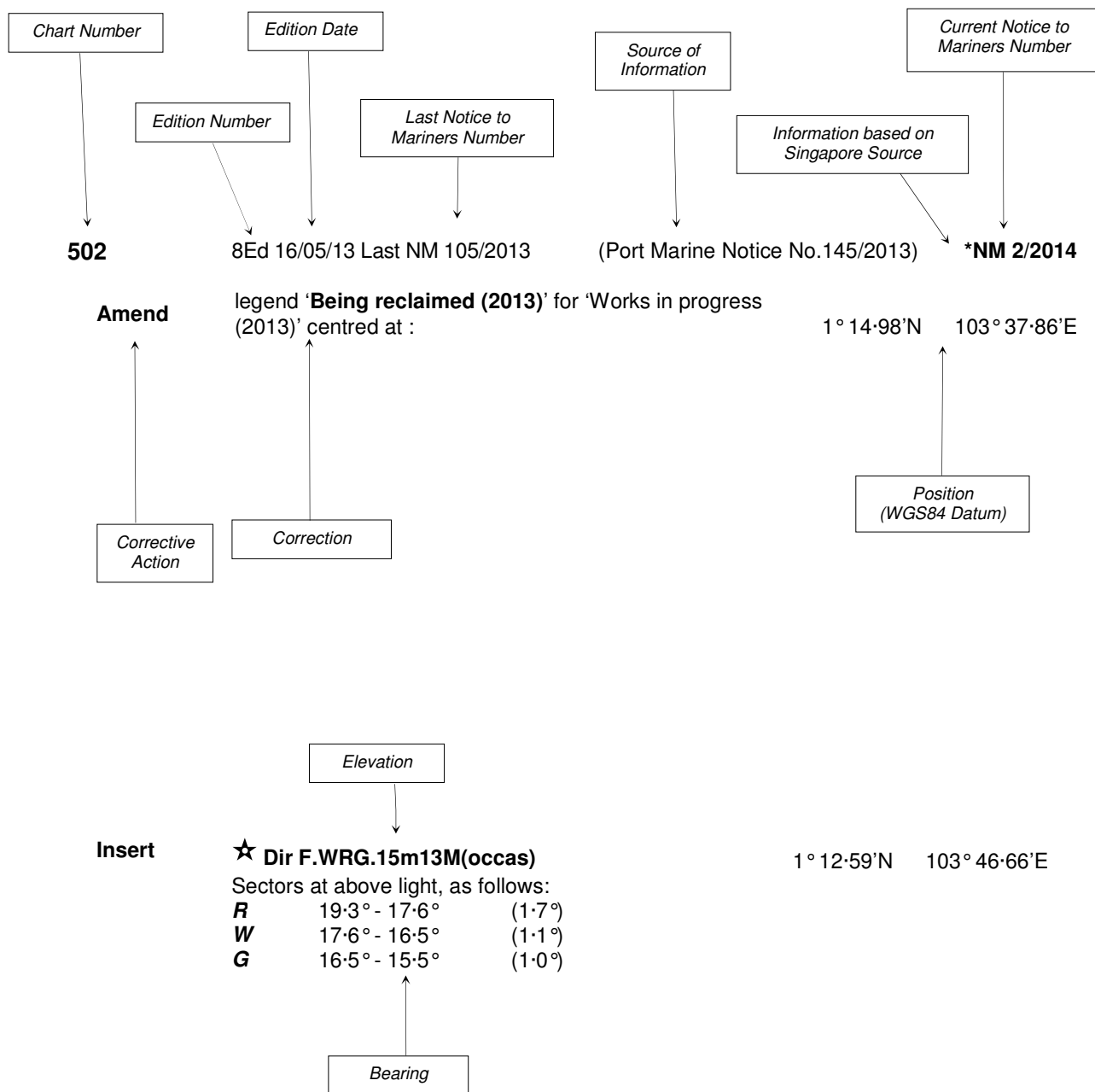
Mariners are requested to notify the Chief Hydrographer, Maritime and Port Authority of Singapore, immediately on the discovery of new dangers or suspected dangers to navigation and of changes or defects in aids to navigation. See Hydrographic Note on back page.

The monthly Singaporean Notices to Mariners can be accessed directly from the MPA website:
[www.mpa.gov.sg/sites/port_and_shipping/circulars_and_notices/singapore_notices_to_mariners\(ntm\).page](http://www.mpa.gov.sg/sites/port_and_shipping/circulars_and_notices/singapore_notices_to_mariners(ntm).page)

Hydrographic Department
Maritime and Port Authority of Singapore
460 Alexandra Road
#20-00 PSA Building
Singapore 119963
Tel: (65) 6375 1227
Fax: (65) 6278 7646

EXPLANATION OF FORMAT

The elements of a typical chart correction are explained below.



Notes:

- a) Notice to Mariners number followed by:
 - T** indicates a Temporary Notice (eg. *NM 3T/2014).
 - P** indicates a Preliminary Notice (eg. *NM 4P/2014).
- b) Bearings are true reckoned clockwise from 000° to 359°; those relating to lights are from seaward.
- c) Heights and elevations are above Mean High Water Springs.

I
INDEX OF CHARTS AND PUBLICATIONS

INDEX OF AFFECTED CHARTS

DESCRIPTION	NOTICE NO.	PAGE NO.
Index of Singaporean Charts	-	3
Index of Dual Badged Charts	-	4
Index of Singapore Electronic Navigational Chart (ENC)	-	5
New Edition Singaporean Charts	-	6
New Edition Dual Badged Charts	-	7, 8
Singaporean Chart GSP1/SP1	*26, *27, *28, 29	9
Singaporean Chart 202	29	9
Singaporean Chart 501	*26, *28	10
Singaporean Chart 502	29, 30	10
Singaporean Chart 503	29	11
Temporary and Preliminary Notices	-	12
Singapore Port Marine Notices	*31	13
Singaporean Print-On-Demand (POD) Charts	*32	13
Amendments to Publications	*33	14 to 16
Reprint of Radio Navigational Warnings	-	17
Extract of Admiralty Notices to Mariners for Dual Badged Charts	-	18 to 22
Singapore Electronic Navigational Chart (ENC) Distributors	-	23
Chart Agents for the Maritime and Port Authority of Singapore Nautical Charts and Publications	-	24

*Denotes information are based on Singaporean source.

I
INDEX OF CHARTS AND PUBLICATIONS

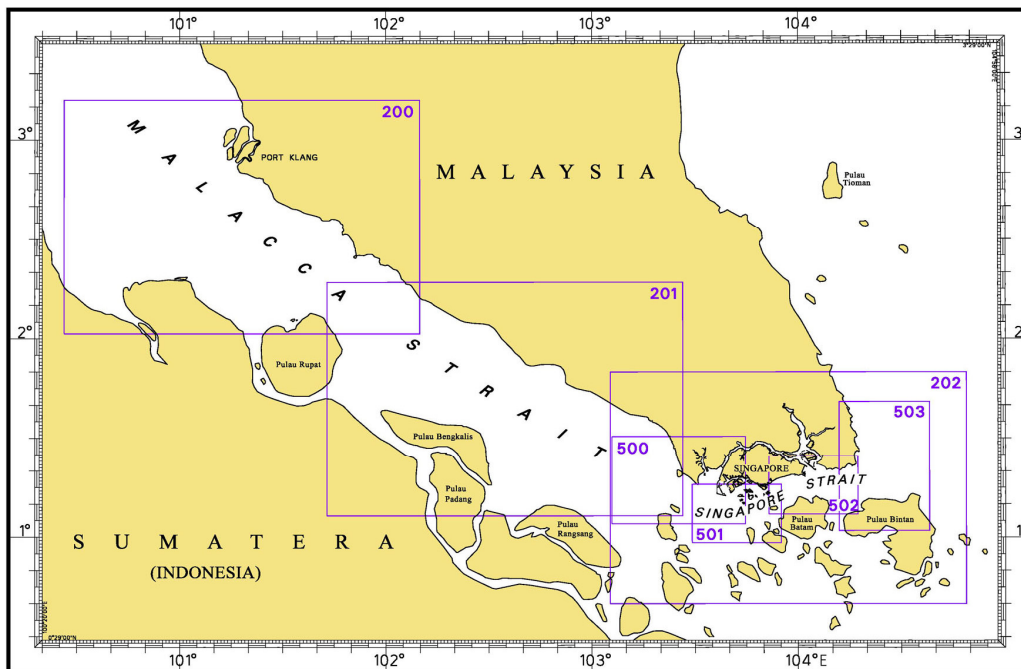
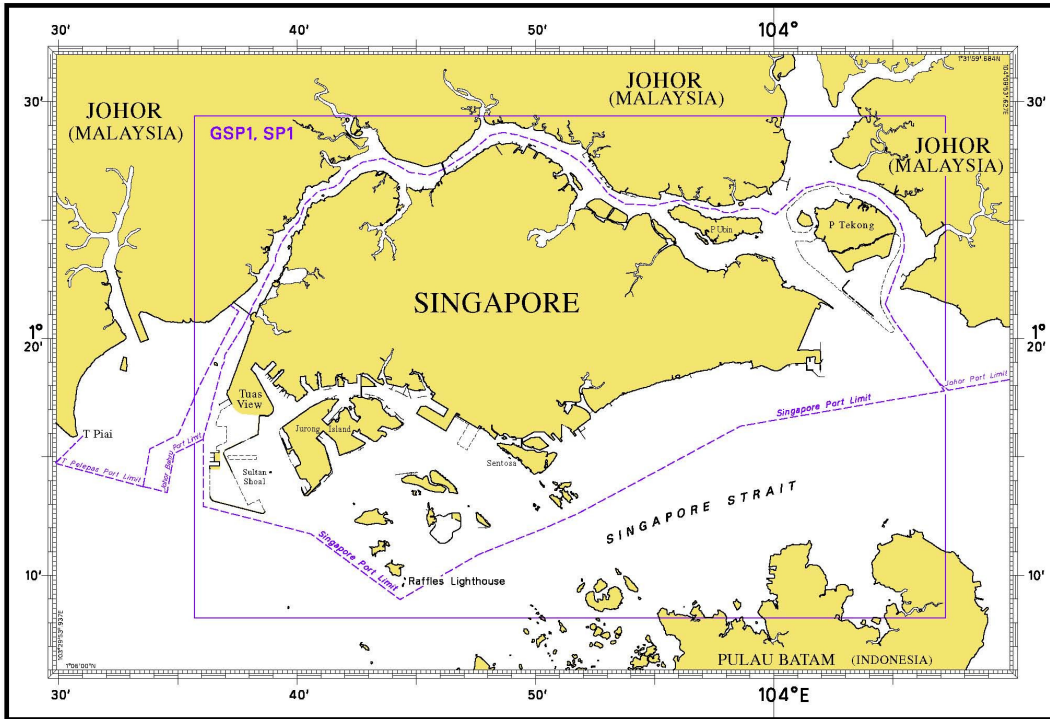
INDEX OF NOTICES

NOTICE NO.	DESCRIPTION	PAGE NO.
-	Index of Singaporean Charts	3
-	Index of Dual Badged Charts	4
-	Index of Singapore Electronic Navigational Chart (ENC)	5
-	New Edition Singaporean Charts	6
-	New Edition Dual Badged Charts	7, 8
*26, *27, *28, 29	Singaporean Chart GSP1/SP1	9
29	Singaporean Chart 202	9
*26, *28	Singaporean Chart 501	10
29, 30	Singaporean Chart 502	10
29	Singaporean Chart 503	11
-	Temporary and Preliminary Notices	12
*31	Singapore Port Marine Notices	13
*32	Singaporean Print-On-Demand (POD) Charts	13
*33	Amendments to Publications	14 to 16
-	Reprint of Radio Navigational Warnings	17
-	Extract of Admiralty Notices to Mariners for Dual Badged Charts	18 to 22
-	Singapore Electronic Navigational Chart (ENC) Distributors	23
-	Chart Agents for the Maritime and Port Authority of Singapore Nautical Charts and Publications	24

* Denotes information are based on Singaporean source.

I INDEX OF CHARTS AND PUBLICATIONS

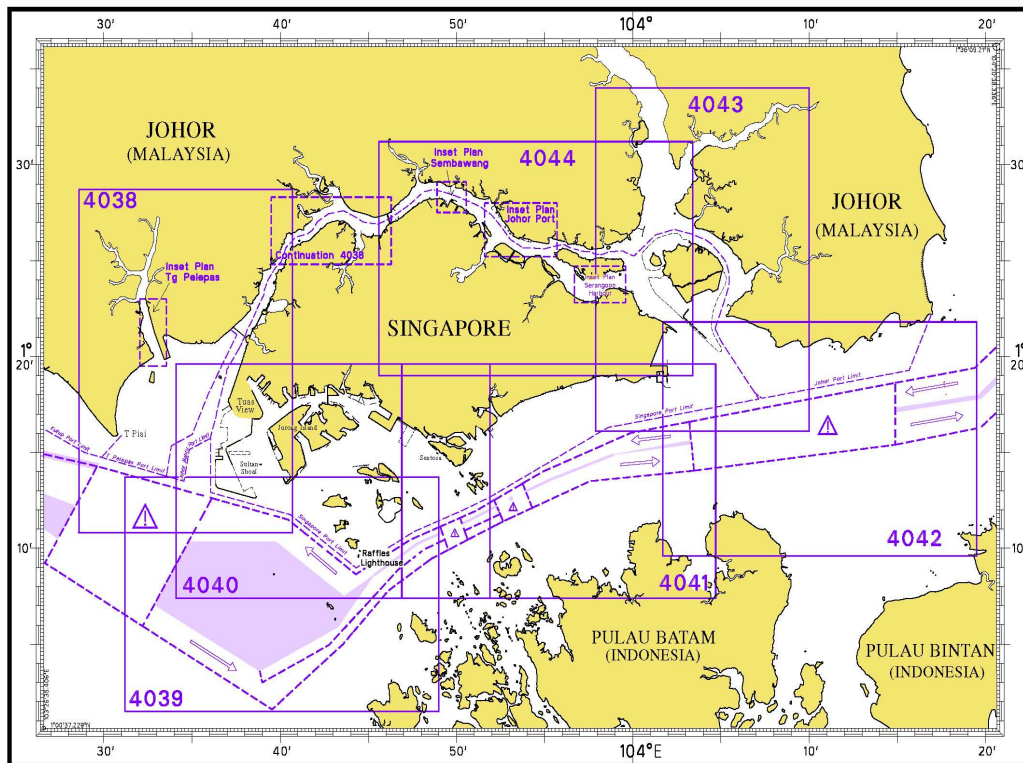
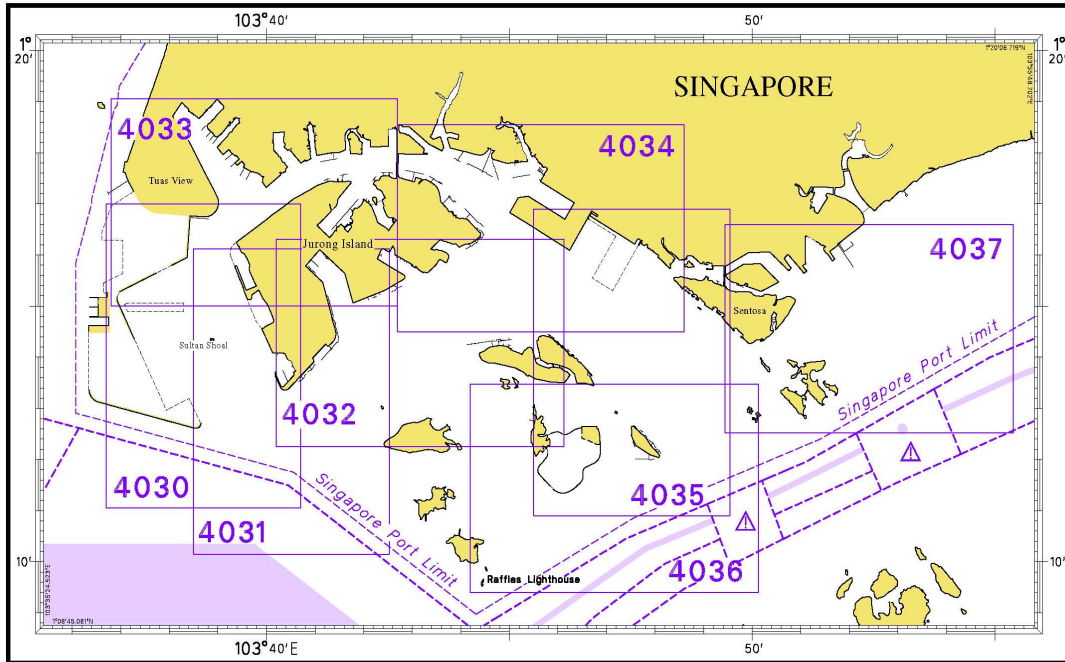
INDEX OF SINGAPOREAN CHARTS



Notes:
 Updated SINGAPOREAN Charts are available through our Print-On-Demand (POD) Chart Service. For more information, refer to Section III – Navigational Information. These charts can be purchased from our authorised Chart Agents.

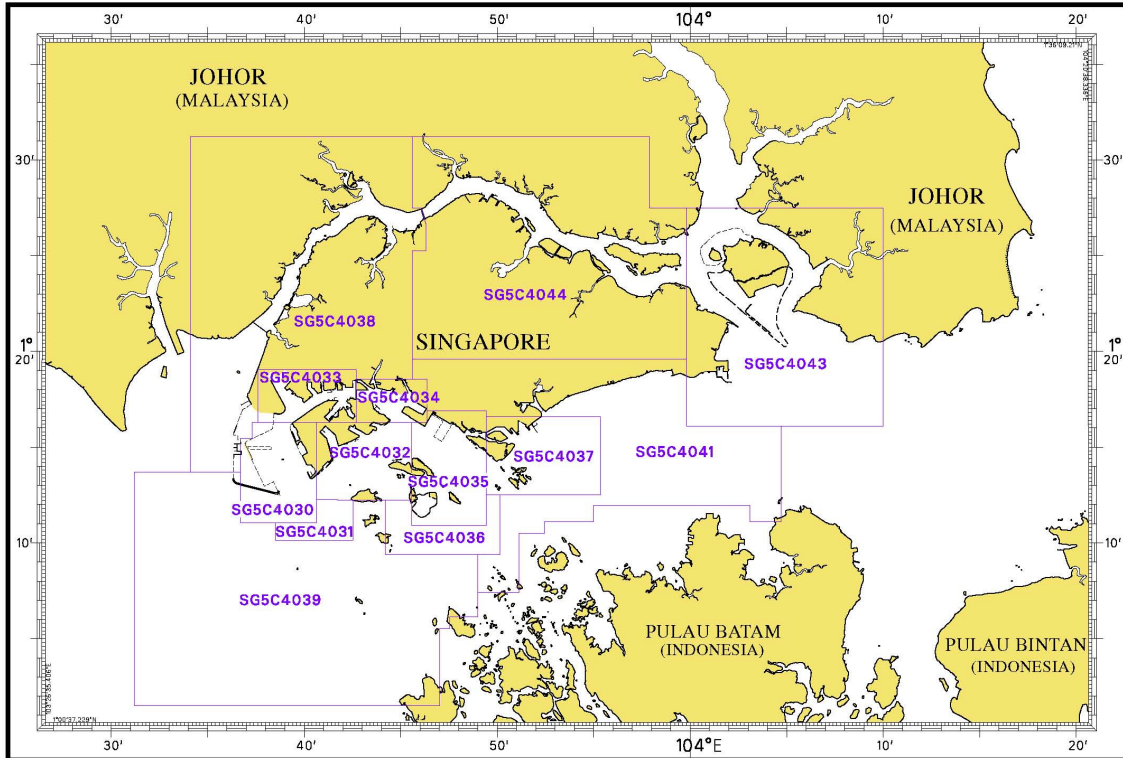
I INDEX OF CHARTS AND PUBLICATIONS

INDEX OF DUAL BADGED CHARTS



I INDEX OF CHARTS AND PUBLICATIONS

INDEX OF SINGAPORE ELECTRONIC NAVIGATIONAL CHART (ENC)



COVERAGE OF SINGAPORE ELECTRONIC NAVIGATIONAL CHART (ENC)

ENC Name	ENC Coverage	ENC Edition
SG5C4030	West Jurong Anchorages and Temasek Fairway	5 th Edition (3/05/2012)
SG5C4031	Western Approaches to Jurong Island	5 th Edition (3/05/2012)
SG5C4032	Sinki Fairway	7 th Edition (3/05/2012)
SG5C4033	Tuas Bay, West Jurong Channel and Pesek Basin	5 th Edition (3/05/2012)
SG5C4034	East Jurong Channel, Pasir Panjang Terminal and West Keppel Fairway	11 th Edition (28/06/2013)
SG5C4035	Western Anchorages, Jong Fairway and Cruise Bay	14 th Edition (26/09/2013)
SG5C4036	Raffles Lighthouse to The Sisters	6 th Edition (3/05/2012)
SG5C4037	Keppel Harbour, Tanjong Pagar Terminal and Approaches	7 th Edition (25/04/2013)
SG5C4038	Johor Strait – Western Part	6 th Edition (26/09/2013)
SG5C4039	Western Approaches to Main Strait	5 th Edition (3/05/2012)
SG5C4041	Pulau Sebarok to Changi	7 th Edition (9/05/2013)
SG5C4043	Kuala Johor and Sungai Johor	9 th Edition (29/08/2013)
SG5C4044	Johor Strait – Eastern Part	9 th Edition (29/08/2013)

II NEW PUBLICATIONS

NEW EDITION SINGAPOREAN CHARTS TO BE PUBLISHED ON 15TH APRIL 2014

Chart Number : *GSP1
Title : Anchorages and Aids to Navigation
Coverage : Lat 01° 08' 20 N 01° 29' 40 N
 Long 103° 35' 70 E 104° 07' 20 E
Scale : 1: 60 000
Date Published : 15th April 2014
Size of Chart : 973·9 x 651·2 mm
Descriptions : This new edition includes changes to aids to navigation, working areas, submarine cables, depth contours from the latest surveys in the vicinity of West of Tuas reclamation, Tuas Anchorages, Temasek Fairway, West Jurong Channel, Pesek and Banyan Basins, Pasir Panjang, Approaches to Pulau Sebarok, South of St John Island, Tanjong Pagar Terminal, Keppel Harbour, Tanah Merah, Pulau Tekong and Sembawang Shipyard.

The existing chart of the same number published on 16th May 2013 will be superseded.

* This chart is provided with a grid area reference.

Chart Number : SP1
Title : Anchorages and Aids to Navigation
Coverage : Lat 01° 08' 20 N 01° 29' 40 N
 Long 103° 35' 70 E 104° 07' 20 E
Scale : 1: 60 000
Date Published : 15th April 2014
Size of Chart : 973·9 x 651·2 mm
Descriptions : This new edition includes changes to aids to navigation, working areas, submarine cables, depth contours from the latest surveys in the vicinity of West of Tuas reclamation, Tuas Anchorages, Temasek Fairway, West Jurong Channel, Pesek and Banyan Basins, Pasir Panjang, Approaches to Pulau Sebarok, South of St John Island, Tanjong Pagar Terminal, Keppel Harbour, Tanah Merah, Pulau Tekong and Sembawang Shipyard.

The existing chart of the same number published on 16th May 2013 will be superseded.

II NEW PUBLICATIONS

NEW EDITION DUAL BADGED CHARTS TO BE PUBLISHED ON 24TH APRIL 2014

Chart Number : 4039
Title : Indonesia, Singapore and Malaysia
 Western Approaches To Main Strait
Coverage : Lat 01° 01'·50 N 01° 13'·70 N
 Long 103° 31'·20 E 103° 49'·00 E
Scale : 1: 30 000
Date Published : 24th April 2014
Size of Chart : 1100·7 x 749·5 mm
Descriptions : This new edition includes changes to anchorages, submarine cables and depths from the latest surveys covering Temasek Fairway and Jong Fairway.

The existing chart of the same number published on 3rd May 2012 will be superseded.

Chart Number : 4042
Title : Indonesia, Singapore and Malaysia
 Changi To Pulau Mungging and Tanjung Buntan To
 Tanjung Tondang
Coverage : Lat 01° 09'·55 N 01° 21'·75 N
 Long 104° 01'·70 E 104° 19'·50 E
Scale : 1: 30 000
Date Published : 24th April 2014
Size of Chart : 1100·6 x 749·5 mm
Descriptions : This new edition includes changes to submarine cables and depths from the latest surveys covering Kuala Johor.

The existing chart of the same number published on 16th August 2012 will be superseded.

NEW EDITION DUAL BADGED CHARTS TO BE PUBLISHED ON 15TH MAY 2014

Chart Number : 4030
Title : Port of Singapore
 West Jurong Anchorages and Temasek Fairway
Coverage : Lat 01° 11'·05 N 01° 17'·00 N
 Long 103° 36'·70 E 103° 40'·70 E
Scale : 1: 10 000
Date Published : 15th May 2014
Size of Chart : 742·0 x 1096·5 mm
Descriptions : This new edition includes changes to depths and topographic details from the latest surveys covering Temasek Fairway, West Jurong Anchorages, West Jurong Channel, west of Jurong Island and area south of Tuas View Extension.

The existing chart of the same number published on 3rd May 2012 will be superseded.

II NEW PUBLICATIONS

NEW EDITION DUAL BADGED CHARTS TO BE PUBLISHED ON 15TH MAY 2014

Chart Number : 4031
Title : Port of Singapore
 Western Approaches to Jurong Island
Coverage : Lat 01° 10'·15 N 01° 16'·12 N
 Long 103° 38'·50 E 103° 42'·53 E
Scale : 1: 10 000
Date Published : 15th May 2014
Size of Chart : 747·5 x 1100·2 mm
Descriptions : This new edition includes changes to depths and topographic details from the latest surveys covering Temasek Fairway, Jurong Anchorages, Banyan Basin and portion of Sinki Fairway.

The existing chart of the same number published on 3rd May 2012 will be superseded.



Chart Number : 4032
Title : Port of Singapore
 Sinki Fairway
Coverage : Lat 01° 12'·25 N 01° 16'·30 N
 Long 103° 40'·20 E 103° 46'·13 E
Scale : 1: 10 000
Date Published : 15th May 2014
Size of Chart : 1100·0 x 746·4 mm
Descriptions : This new edition includes changes to depths from the latest surveys covering north of Pulau Bukom, Banyan Basin, East Jurong Channel, portion of West Keppel Fairway, portion of Selat Sinki and north of Pulau Hantu.

The existing chart of the same number published on 3rd May 2012 will be superseded.

Chart Number : 4033
Title : Port of Singapore
 Tuas Bay, West Jurong Channel and Pesek Basin
Coverage : Lat 01° 15'·00 N 01° 19'·05 N
 Long 103° 36'·80 E 103° 42'·70 E
Scale : 1: 10 000
Date Published : 15th May 2014
Size of Chart : 1094·4 x 746·4 mm
Descriptions : This new edition includes changes to depths and topographic details from the latest surveys covering Temasek Fairway, West Jurong Channel, Benoi Basin, Pesek Basin and Tuas View Extension.







The existing chart of the same number published on 3rd May 2012 will be superseded.

II
NOTICES TO MARINERS AND CHART CORRECTIONS

GSP1/SP1	8 Ed 16/05/13 Last NM 17/2014	(HD/HE025/34/2014)	*NM 26/2014
Insert	legend ' collapsed ' at		1° 13·39'N 103° 46·78'E
		(HD/HE025/37/2014)	*NM 27/2014
Insert	 Fl. Y. 8s		1° 11·43'N 103° 45·68'E
		(HD/HE025/39/2014)	*NM 28/2014
Delete	 Fl(2)R. 10s Terumbu		1° 11·26'N 103° 46·40'E
		(Royal Malaysian Navy Notice No.1/29/2014)	NM 29/2014
Insert	port limit, dashed line, joining:		1° 17·72'N 104° 07·20'E (chart border)
			1° 18·13'N 104° 06·90'E
Delete	former port limit, dashed line, joining:		1° 17·91'N 104° 07·20'E (chart border)
			1° 18·13'N 104° 06·90'E

202	7 Ed 26/09/13 Last NM 18/2014	(Royal Malaysian Navy Notice No.1/29/2014)	NM 29/2014
Insert	port limit, dashed line, joining:		1° 22·20'N 104° 17·05'E 1° 20·59'N 104° 19·33'E 1° 19·90'N 104° 19·93'E 1° 19·40'N 104° 19·40'E 1° 17·35'N 104° 07·46'E 1° 18·13'N 104° 06·90'E
	legend, Johor Port Limit centred on:		1° 18·58'N 104° 13·31'E
Delete	former port limit, dashed line, joining:		1° 22·20'N 104° 16·94'E 1° 19·28'N 104° 15·66'E 1° 17·83'N 104° 07·31'E 1° 18·13'N 104° 06·90'E
	legend, Johor Port Limit centred on:		1° 18·66'N 104° 10·83'E

II
NOTICES TO MARINERS AND CHART CORRECTIONS

501	6 Ed 3/05/12 Last NM 9/2014	(HD/HE025/34/2014)	*NM 26/2014
Insert	legend 'collapsed' at		1° 13·39'N 103° 46·78'E
		(HD/HE025/39/2014)	*NM 28/2014
Delete	 <i>Fl(2)R.10s Terumbu</i>		1° 11·26'N 103° 46·40'E
<hr/>			
502	6 Ed 3/05/12 Last NM 7/2014	(Royal Malaysian Navy Notice No.1/29/2014)	NM 29/2014
Insert	port limit, dashed line, joining:		1° 22·20'N 104° 17·05'E 1° 21·58'N 104° 17·92'E (chart border)
Insert	port limit, dashed line, joining:		1° 19·04'N 104° 17·31'E (chart border) 1° 17·35'N 104° 07·46'E 1° 18·13'N 104° 06·90'E
	legend, Johor Port Limit centred on:		1° 18·16'N 104° 11·55'E 1° 21·85'N 104° 17·45'E
Delete	former port limit, dashed line, joining:		1° 22·20'N 104° 16·94'E 1° 19·28'N 104° 15·66'E 1° 17·82'N 104° 07·33'E 1° 18·13'N 104° 06·90'E
	legend, <i>Johor Port Limit</i> centred on:		1° 18·65'N 104° 11·84'E 1° 21·20'N 104° 16·45'E
		(Indonesia Notice to Mariners No. 9/070/2014)	NM 30/2014
Insert	 <i>Fl.G.3s No.1</i>		1° 09·88'N 103° 59·24'E
Delete	 <i>Fl.G.3s No.1</i>		1° 09·95'N 103° 59·32'E
		(Indonesia Notice to Mariners No. 9/071/2014)	
Move	 <i>Fl.R.4s No.2</i> from:		1° 10·03'N 103° 59·36'E
	to:		1° 10·09'N 103° 59·45'E
		(Chart 4041 dated 9 May 2013)	
Replace	 <i>Fl.G.5s No.3</i> with  <i>Fl.G.5s No.3</i>		1° 09·90'N 103° 59·67'E

II
NOTICES TO MARINERS AND CHART CORRECTIONS

503	4 Ed 1/04/10 Last NM 12/2014	(Royal Malaysian Navy Notice No.1/29/2014)	NM 29/2014
Insert	port limit, dashed line, joining:	1° 22·20'N 104° 17·05'E 1° 20·59'N 104° 19·33'E 1° 19·90'N 104° 19·93'E 1° 19·40'N 104° 19·40'E 1° 18·11'N 104° 11·89'E (chart border)	
	legend, <i>Johor Port Limit</i> centred on:	1° 18·98'N 104° 16·46'E 1° 21·19'N 104° 18·33'E	
Delete	former port limit, dashed line, joining:	1° 22·20'N 104° 16·94'E 1° 19·28'N 104° 15·66'E 1° 18·62'N 104° 11·89'E (chart border)	
	legend, <i>Johor Port Limit</i> centred on:	1° 19·24'N 104° 15·05'E 1° 21·33'N 104° 16·50'E	

II
TEMPORARY AND PRELIMINARY NOTICES

NIL

III NAVIGATIONAL INFORMATION

***(NM 31/2014) SINGAPORE PORT MARINE NOTICES**

The following Port Marine Notices have been shortlisted, as they would be of particular interest to mariners.

These notices can be accessed directly from MPA website:
www.mpa.gov.sg/sites/port_and_shipping/circulars_and_notices/port_marine_notices.page

PMN No.	Subject
27/2014	Construction of jetty at "LUBPARK" shared facility, off Tuas View Extension, West Johor Strait.
28/2014	Rock removal and sheet piling work of cofferdam for proposed construction of dock at Tuas new shipyard, Tuas View Extension (West).
29/2014	Dredging work off Temasek Fairway, Jurong Island.
30/2014	Reclamation work at Tuas View Extension.
35/2014	Soil investigation work off West Jurong Channel, Jurong Island.
39/2014	Soil investigation work for proposed Tuas Terminal Phase 1.
40/2014	Dredging work off Senoko Jetty.

***(NM 32/2014) SINGAPOREAN PRINT-ON-DEMAND (POD) CHARTS**

Print-On-Demand (POD) Charts are the most up-to-date paper nautical charts printed for navigational use. These nautical charts are produced in accordance with the International Hydrographic Organisation (IHO) chart specifications. These official nautical charts are continually updated to the latest Notices to Mariners before they are printed and sold to users.

These POD Charts include 200, 201, 202, 500, 501, 502 and 503.

BENEFITS TO OUR CUSTOMERS

Convenience

Customers need not make numerous hand corrections to the nautical charts before use. In addition the updated POD Charts are more accurate and reliable than offset printed charts with hand corrections.

Clarity

Clarity in the presentation of updated information as compared to lithographic printed charts, where in some cases there are several overlapping corrections over existing information.

Coverage

The POD Charts cover the Malacca and Singapore Straits, from One Fathom Bank to Horsburgh Lighthouse.

III
AMENDMENTS TO PUBLICATIONS

***(NM 33/2014) UPDATING OF PUBLICATION "SINGAPORE PORT INFORMATION 2014/2015"**

1. Page 111

DEPTHS OF RIVERS AND BASINS

Amend the following:

Locations	DEPTHS (m)	REMARKS
Banyan Basin	16.2m	

Source: MPA Hydrographic Department (HY Code E00105813)

2. Page 132

**CHARACTERISTICS OF AIDS TO NAVIGATION
RECLAMATION OFF TUAS VIEW**

Amend the following:

Name of Beacon/Buoy	Position Lat.N Long.E Deg Min	Structure, colour & Shape	Light Characteristic	Owner
SCE-2 Buoy	01°13.807' 103°37.661'	Yellow pillar	Fl.Y.4s	JTC

Source: MPA Hydrographic Department (DB67/7/2014)

3. Page 132

RECLAMATION OFF TUAS VIEW

Delete the following:

Name of Beacon/Buoy	Position Lat.N Long.E Deg Min	Structure, colour & Shape	Light Characteristic	Owner
HVB-06 Buoy	01°15.280' 103°37.230'	Yellow pillar	Fl.Y.2s	Hyundai - VOBN

Source: MPA Hydrographic Department (HE025/22/2014)

4. Page 134

TEMASEK FAIRWAY

Amend the following:

Name of Beacon/Buoy	Position Lat.N Long.E Deg Min	Structure, colour & Shape	Light Characteristic	Owner
Jurong Dua Buoy	01°14.672' 103°39.613'	Green Conical	Fl.G.4s	M/S Diap-Shap JV
Jurong Tiga Buoy	01°15.395' 103°39.269'	Green Conical	Fl.G.6s	M/S Diap-Shap JV

III AMENDMENTS TO PUBLICATIONS

TEMASEK FAIRWAY (continued)

Amend the following:

Name of Beacon/Buoy	Position Lat.N Long.E Deg Min	Structure, colour & Shape	Light Characteristic	Owner
Jurong Empat Buoy	01°15.928' 103°39.015'	Double black cones topmark point to point on yellow black yellow pillar	Q(9)W.15s	M/S Diap-Shap JV

Source: MPA Hydrographic Department (DB67/8/2014)

5. Page 146

JONG FAIRWAY

Amend the following:

Name of Beacon/Buoy	Position Lat.N Long.E Deg Min	Structure, colour & Shape	Light Characteristic	Owner
Isolated danger mark Beacon (Batu Kopi)	01°13.389' 103°46.777'	Double black spheres topmark on black and red pole (collapsed)	Unlit	Shell Eastern Petroleum (Pte) Ltd

Source: MPA Hydrographic Department (HD/HE025/34/2014)

6. Page 170 – Item 17a

WHARVES AND BERTHS

JURONG ISLAND - (TEMASEK FAIRWAY) (JURONG AROMATICS CORPORATION) (1°15.6'N, 103°39.5'E)

Insert the following:

Berth	Length of Berth	Depth Alongside (Year Surveyed)	Controlling Depth In Approaches
1	320m	17.0m (2013)	15.3m
2	242m	15.9m (2013)	15.3m
3	190m	17.0m (2013)	15.3m

Source: MPA Hydrographic Department (HY Code G00120313 and G00120413)

**III
AMENDMENTS TO PUBLICATIONS**

7. Page 171 – Item 18

JURONG ISLAND – SLNG TERMINAL (1°14.0'N, 103°40.2'E)

Amend the following:

Berth	Length of Berth	Depth Alongside (Year Surveyed)	Controlling Depth In Approaches
OSLN 1	420m	17.8m (2013)	-
OSLN 2	230m	13.2m (2013)	-
OSLN 3	400m	13.6m (2013)	-

Source: MPA Hydrographic Department (HY Code D00100214)

8. Page 175 – Item 31

PULAU BUKOM – (SHELL REFINERY) (1°14.0'N, 103°46.1'E)

Amend the following:

Berth	Length of Berth	Max LOA	Depth Alongside (Year Surveyed)	Controlling Depth In Approaches
1	135m	Max 110m	11.2m (2012)	13.6m
2	150m	Max 170m	9.2m (2012)	13.6m
3	170m	Max 170m	11.3m (2012)	13.6m
4	170m	Max 190m	11.6m (2012)	13.6m
5	170m	70m – 190m	12.9m (2012)	13.6m
6	245m	110m – 270m	16.5m (2013)	13.6m
7	200m	90m – 245m	13.5m (2012)	13.6m
8	275m	90m – 275m	16.6m (2012)	13.6m

Source: MPA Hydrographic Department (HY Code C001105612, C00105812 and C00107212)

IV
REPRINT OF RADIO NAVIGATIONAL WARNINGS

The following Radio Navigational Warnings have been shortlisted, as they would be of particular interest to mariners.

TT026 (AMENDED ON 16 MAR 14)

TUAS RECLAMATION WORKING AREA AT WESTERN PART OF SINGAPORE PORT ARE MARKED BY FLWG BUOYS (REF. PMN: 54/2013, 30/2014).

TT161

UNDERWATER CABLE REPAIR OPERATION CONDUCTED BY CABLE SHIP ' LODBORG' IN POSITION LAT 01°29.555'N LONG 104°28.505'E. ALL VESSELS PASSING THE VICINITY ARE ADVISED TO KEEP A SAFE DISTANCE OF 550M FROM THE CABLE SHIP.

TT173

VESSELS IN EAST JOHOR STRAIT ARE ADVISED TO NAVIGATE WITH CAUTION WHEN NEAR THE PROJECT AREAS OFF PULAU TEKONG, CHANGI AND MALANG PAPAN AS SHALLOW WATER AREAS EXIST. VESSELS ARE ADVISED TO KEEP LOOKOUT FOR TUGS AND BARGES NAVIGATING NEAR THE PROJECT AREAS AND PASSENGER FERRIES CROSSING BETWEEN CHANGI AND PULAU TEKONG AND VICINITY OF PASIR GUDANG.

TT961

VESSELS INTENDING TO CROSS THE TRAFFIC SEPARATION SCHEME(TSS) OR PRECAUTIONARY AREAS IN THE SINGAPORE STRAIT DURING THE HOURS OF DARKNESS ARE RECOMMENDED TO DISPLAY THE NIGHT SIGNALS CONSISTING OF 3 ALL-ROUND GREEN LIGHTS IN A VERTICAL LINE WITH EFFECT FROM 1ST JULY 2011 AT 010000UTC (0800SGT) AS DETAILED IN MARITIME AND PORT AUTHORITY OF SINGAPORE'S PORT MARINE CIRCULAR, 02 OF 2011 DATED 30 MAY 2011.

ISSUED BY SINGAPORE PORT OPERATIONS CONTROL CENTRE (as at 30th March 2014)

V
**EXTRACT OF ADMIRALTY NOTICES TO MARINERS
 FOR DUAL BADGED CHARTS**

These notices can also be accessed directly from UKHO Website:

www.ukho.gov.uk/ProductsandServices/MaritimeSafety/Pages/NMPublic.aspx

1304 SINGAPORE STRAIT – Nipa Transit Anchorage – Anchorage areas. Legends. Light.

Light List Vol. F, 2013/14, 1694

Source: Indonesian Notice 52/554/13

Chart 4031 [*previous update 432/14*] WGS84 DATUM

Insert	limit of anchorage area, pecked line, joining:	1° 10′·300N., 103° 38′·500E. (W border) 1° 10′·300N., 103° 38′·700E. 1° 10′·150N., 103° 38′·700E. (S border)
--------	--	--

Chart 4039 [*previous update 3013/13*] WGS84 DATUM

Insert	legend, See NM 1303(P)/14 , centred on:	1° 08′·20N., 103° 37′·70E.
--------	--	----------------------------

Chart 4040 [*previous update 432/14*] WGS84 DATUM

Insert	legend, See NM 1303(P)/14 , centred on:	1° 08′·45N., 103° 37′·70E.
--------	--	----------------------------

1306* SINGAPORE – Temasek Fairway W and Sinki Fairway – Foul. Legends. Buoyage. Dredged depth. Works Automatic Identification System. Light-beacon. Wreck. Mooring buoys.

Light List Vol. F, 2013/14, 1685.78

ALRS Vol. 2, 2013/14: (12/14)

Source: Maritime and Port Authority of Singapore

Chart 4030 [*previous update 432/14*] WGS84 DATUM

Insert	legend, See NM 1305(P)/14 , centred on:	1° 15′·030N., 103° 38′·000E.
Replace	# (17s) with # (17s)	1° 14′·805N., 103° 38′·087E.

Chart 4031 [*previous update 1304/14*] WGS84 DATUM


Insert	legend, See NM 1305(P)/14 , centred on:	1° 15′·100N., 103° 38′·620E.
Amend	light-beacon to, FI(2)10s11m5M Banyan dredged depth to 24.5m (2013) , centred on:	(a) 1° 13′·345N., 103° 41′·583E. 1° 13′·739N., 103° 40′·963E.
Delete	Automatic Identification System, AIS, at Banyan light-beacon	(a) above
	 <i>FI(2)10s Banyan</i> , close SE of:	(a) above

Chart 4032 [*previous update 4412/13*] WGS84 DATUM


Amend	light-beacon to, FI(2)10s11m5M Banyan dredged depth to 24.5m (2013) , centred on:	(a) 1° 13′·345N., 103° 41′·583E. 1° 13′·739N., 103° 40′·963E.
Delete	Automatic Identification System, AIS, at Banyan light-beacon	(a) above
	 <i>FI(2)10s Banyan</i> , close SE of:	(a) above

Chart 4033 [*previous update 432/14*] WGS84 DATUM

Insert	legend, See NM 1305(P)/14 , centred on:	1° 15′·190N., 103° 38′·000E.
--------	--	------------------------------

V

**EXTRACT OF ADMIRALTY NOTICES TO MARINERS
FOR DUAL BADGED CHARTS**

1306* SINGAPORE – Temasek Fairway W and Sinki Fairway – Foul. Legends. Buoyage. Dredged depth. Works Automatic Identification System. Light-beacon. Wreck. Mooring buoys. (continued)

Chart 4038 [*previous update 432/14*] WGS84 DATUM

Insert the accompanying block, showing new mooring buoys and amendments to works, legends, foul and buoyage, centred on: 1° 14'·81N., 103° 37'·95E.

Chart 4039 [*previous update 1304/14*] WGS84 DATUM

Amend light-beacon to, **FI(2)10s11m5M Banyan** (a) 1° 13'·35N., 103° 41'·58E.

Delete Automatic Identification System, AIS, at Banyan light-beacon (a) above



FI(2)10s Banyan, close SE of: (a) above

Chart 4040 [*previous update 1304/14*] WGS84 DATUM

Insert the accompanying block, showing new mooring buoys and amendments to works, legends, foul, buoyage and wreck, centred on: 1° 14'·78N., 103° 37'·83E.

Amend light-beacon to, **FI(2)10s11m5M Banyan** (a) 1° 13'·35N., 103° 41'·58E.

Delete Automatic Identification System, AIS, at Banyan light-beacon (a) above



FI(2)10s Banyan, close SE of: (a) above

1308* SINGAPORE – Pulau Sebarok SE and SW, Kusu Island NE and Marina Bay Cruise Centre Singapore - Depth. Buoy. Wreck. Dredged depths. Drying heights. Beacon.

Source: Maritime and Port Authority of Singapore

Chart 4035 [*previous update New Edition 26/09/2013*] WGS84 DATUM

Insert depth, **24** (a) 1° 11'·593N., 103° 47'·307E.



Q(6)+LFI.15s South Sebarok 1° 11'·799N., 103° 48'·383E.

Replace drying height, 0₅, with drying height, 1₈ (b) 1° 11'·832N., 103° 48'·360E.

Delete depth, 24₆, close SE of: (a) above




Sebarok (collapsed), close NW of: (b) above

Chart 4036 [*previous update 3013/13*] WGS84 DATUM

Insert  **Q(6)+LFI.15s South Sebarok** 1° 11'·799N., 103° 48'·383E.

drying height, 1₈ (a) 1° 11'·832N., 103° 48'·360E.

Delete  Sebarok (collapsed), close NW of: (a) above

drying height, 0₂, close W of: (a) above

Chart 4037 [*previous update 4303/13*] WGS84 DATUM

Insert  1° 13'·512N., 103° 51'·678E.

Amend dredged depth to, **11.4m (2013)**, centred on: 1° 15'·966N., 103° 51'·687E.
1° 15'·920N., 103° 51'·606E.

V
**EXTRACT OF ADMIRALTY NOTICES TO MARINERS
 FOR DUAL BADGED CHARTS**

1307 MALAYSIA – Peninsular Malaysia, East Coast – Johor – Harbour limit. (continued)

Chart 4042
(continued)

Delete former limit of harbour, pecked line, and associated legend,
Johor Port Limit, joining: 1° 21′·75N., 104° 16′·76E.
 (N border)
 1° 19′·26N., 104° 15′·67E.
 1° 17′·82N., 104° 07′·32E.
 1° 18′·14N., 104° 06′·90E.
 (existing harbour limit)

Chart 4043 [*previous update 432/14*] WGS84 DATUM

Insert harbour limit, pecked line, joining: (a) 1° 17′·79N., 104° 10′·00E.
 (E border)
 (b) 1° 17′·35N., 104° 07′·46E.
 1° 17′·79N., 104° 07′·15E.
 (existing harbour limit)
 (a)-(b) above

legend, ***Johor Port Limit***, along:

Delete former limit of harbour, pecked line, and associated legend,
Johor Port Limit, joining: 1° 18′·29N., 104° 10′·00E.
 (E border)
 1° 17′·82N., 104° 07′·32E.
 1° 18′·14N., 104° 06′·90E.

1303(P)/14 SINGAPORE STRAIT – Nipa Transit Anchorage – Anchorage areas.

Source: Indonesian Notice 52/554/13

1. New anchorage areas have been established bounded by the following positions:

1° 10′·30N., 103° 35′·30E.
 1° 10′·30N., 103° 38′·70E.
 1° 09′·17N., 103° 38′·70E.
 1° 09′·60N., 103° 35′·30E.

Zone A

1° 09′·55N., 103° 34′·90E.
 1° 09′·60N., 103° 35′·30E.
 1° 09′·45N., 103° 36′·50E.
 1° 06′·17N., 103° 34′·55E.
 1° 07′·07N., 103° 33′·03E.

Zone B

1° 06′·30N., 103° 42′·00E.
 1° 06′·55N., 103° 42′·50E.
 1° 05′·80N., 103° 42′·80E.
 1° 04′·90N., 103° 40′·90E.
 1° 05′·38N., 103° 40′·63E.
 1° 05′·49N., 103° 40′·84E.
 1° 07′·67N., 103° 39′·53E.
 1° 08′·28N., 103° 40′·72E.
 1° 06′·30N., 103° 42′·00E.

(All positions are referred to WGS84 Datum)

2. These changes will be included in New Editions of Charts 4039 and 4040 to be published mid 2014.

Charts affected : 4039, 4040

V
EXTRACT OF ADMIRALTY NOTICES TO MARINERS
FOR DUAL BADGED CHARTS

1305(P)/14 SINGAPORE – Temasek Fairway W – Works. Buoyage.

Source: Maritime and Port Authority of Singapore

1. Reclamation works are in progress within an area bounded by the following positions:

1° 15'·162N., 103° 36'·980E.
 1° 15'·333N., 103° 37'·338E.
 1° 15'·333N., 103° 38'·760E.
 1° 14'·928N., 103° 38'·760E.
 1° 14'·647N., 103° 38'·156E.
 1° 14'·647N., 103° 37'·225E.

2. Light-buoys have been established in the following positions:

Designation	Characteristics	Position	Buoy type
POC F2 MB-01A	Fl.Y.1s (sync)	1° 15'·273N., 103° 37'·388E.	Mooring
POC F2 MB-01B	Fl.Y.1s (sync)	1° 15'·273N., 103° 37'·560E.	Mooring
POC F2 MB-02A	Fl.Y.2s (sync)	1° 15'·273N., 103° 37'·664E.	Mooring
POC F2 MB-02B	Fl.Y.2s (sync)	1° 15'·273N., 103° 37'·836E.	Mooring
POC F2 MB-03A	Fl.Y.3s (sync)	1° 15'·273N., 103° 37'·940E.	Mooring
POC F2 MB-03B	Fl.Y.3s (sync)	1° 15'·273N., 103° 38'·112E.	Mooring
POC F2 MB-04A	Fl.Y.4s (sync)	1° 15'·273N., 103° 38'·216E.	Mooring
POC F2 MB-04B	Fl.Y.4s (sync)	1° 15'·273N., 103° 38'·388E.	Mooring
POC F2 MB-05A	Fl.Y.5s (sync)	1° 15'·273N., 103° 38'·492E.	Mooring
POC F2 MB-05B	Fl.Y.5s (sync)	1° 15'·273N., 103° 38'·664E.	Mooring
POC F2 MB-06A	Fl.Y.6s (sync)	1° 15'·208N., 103° 38'·677E.	Mooring
POC F2 MB-06B	Fl.Y.6s (sync)	1° 15'·002N., 103° 38'·677E.	Mooring
F2-TVE-01	Fl.Y.2s (sync)	1° 14'·926N., 103° 38'·769E.	Special mark pillar
F2-TVE-02	Fl.Y.2s (sync)	1° 14'·647N., 103° 38'·156E.	Special mark pillar
F2-TVE-03	Fl.Y.2s (sync)	1° 14'·647N., 103° 37'·660E.	Special mark pillar
HS-TVE-08	Fl.Y.2s	1° 14'·502N., 103° 38'·731E.	Special mark pillar

3. Light-buoys have been removed from the following positions:

Designation	Characteristics	Position	Buoy type
HS-T VE-01	Fl.Y.3s (sync)	1° 15'·087N., 103° 37'·551E.	Special mark pillar
HS-T VE-02	Fl.Y.3s (sync)	1° 14'·867N., 103° 37'·536E.	Special mark pillar
HS-T VE-03	Fl.Y.3s (sync)	1° 14'·866N., 103° 37'·154E.	Special mark pillar
HS-T VE-04	Fl.Y.3s (sync)	1° 14'·865N., 103° 37'·874E.	Special mark pillar
HS-T VE-05	Fl.Y.3s (sync)	1° 15'·086N., 103° 37'·874E.	Special mark pillar
HS-T VE-06	Fl.Y.3s (sync)	1° 15'·086N., 103° 38'·243E.	Special mark pillar
HS-T VE-07	Fl.Y.3s (sync)	1° 14'·866N., 103° 38'·243E.	Special mark pillar

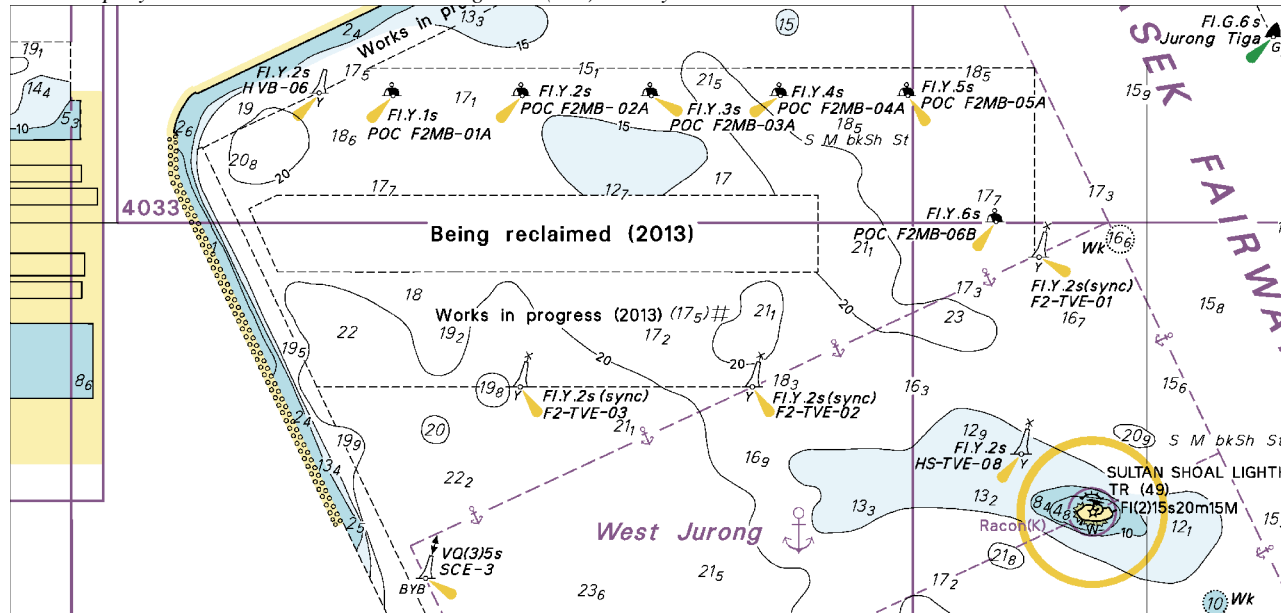
(All positions are referred to WGS84 Datum)

4. Mariners are advised to navigate with caution in the vicinity of the works area.
5. This update will be included in New Editions of Charts 4030, 4031 and 4033 to be published in May 2014.

Charts affected : 4030 , 4031, 4033

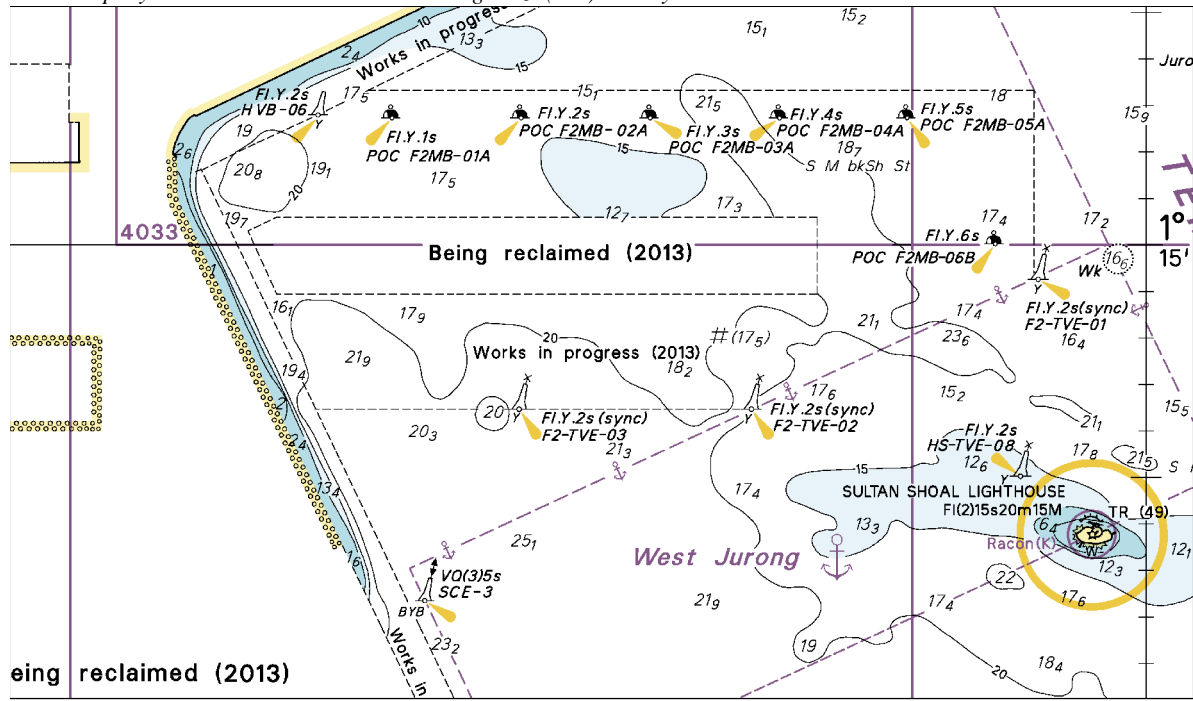
Updated to Admiralty Notices to Mariners Edition No. 13 of 2014 dated 27th March 2014.

To accompany Notice to Mariners 1306/14. Image Size (mm) 80.5 by 169.6



Block for Chart No 4038

To accompany Notice to Mariners 1306/14. Image Size (mm) 91.4 by 156.4



Block for Chart No 4040

MPA ENC DISTRIBUTORS

ENC DISTRIBUTOR	ADDRESS	TELEPHONE/FAX NO./EMAIL/WEBSITE
ChartWorld GmbH ChartWorld Asia Pacific Pte Ltd.	Atlantic Haus, Zirkusweg 1 D-20359 Hamburg Germany Frontech Centre 07-01, 15 Jalan Kilang Barat, Singapore 159357	Tel. No.: +49 40 853 58 6942 Fax No.: +49 40 853 58 6949 Email: sales@chartworld.com Tel No.: +65 6513 3500 Website : http://www.chartworld.com http://www.ecdis-as-a-service.com
DPM (Singapore) Pte Ltd	2 Boon Leat Terrace, #05-02/03 Harbourside 2, Singapore 119844	Tel. No.: +65 6270 4060 Fax No.: +65 6276 3858 Email: sales@dpmsingapore.com.sg Website: http://www.dpmsingapore.com.sg
Maritime Information Systems (MARIS) Maritime Information Systems AS (MARIS)	52, Telok Blangah Road #01-06, Telok Blangah House, Singapore 058809 Danholmen 25, 3128 Notteroy, Norway	Tel. No.: +65 6276 1472 Fax No.: +65 6276 1473 Email: : support@maris.sg Website: http://www.maris.no Tel. No.: +47 33 30 42 50 Fax No.: +47 33 30 42 51 Email: : sales@maris.no Website: http://www.maris.no
Motion Smith	15 Jalan Kilang Barat #08-01/05 Frontech Centre, Singapore 159357	Tel. No.: +65 6220 5098 Fax No.: +65 6225 4902 Email: sales@motsmith.com Website: http://www.motsmith.com
Transas Marine Pacific Pte Ltd	Cyber Centre 16/18 Jalan Kilang Barat Off Jalan Bukit Merah Singapore 159358	Tel. No.: +65 6271 0200 Fax No.: +65 6271 7300 Email: navigation.asia@transas.com Website: http://www.transas.com
Japan Hydrographic Association (Electronic Charts Division)	Daiichi Sogo Bldg, 6F 1-6-6, Hanedakuko, Ota-ku Tokyo 144-0041, Japan	Tel. No.: +81 3 5708 7093 Fax No.: +81 3 5708 7094 Email: shimizu-6ki@jha.jp Website: http://www.jha.or.jp/en/jha/
Jeppesen Norway AS	P.O Box 212 , N-4371 Egersund, Norway	Tel No.: +47 51 46 4700 Fax No: +47 51 46 4701 Email: license.marine@jeppesen.com Website : http://www.jeppesen.com/marine
PRIMAR STAVANGER	Lervigsveien 36, P.O Box 60, N-4001 Stavanger, Norway	Tel. No.: +47 51 93 9500 Fax No.: +47 51 93 9501 Email: sales@ecc.no Website : http://www.primar.no
The United Kingdom Hydrographic Office	Admiralty Way, Taunton, Somerset, TA1 2DN United Kingdom	Tel. No.: +44 1823 33 7900 Fax No.: +44 1823 28 4077 Emails: ENCS.SalesReports@ukho.gov.uk Website: http://www.ukho.gov.uk

Chart Agents for the Maritime and Port Authority of Singapore
Nautical Charts and Publications

Please approach any of the appointed chart agents to purchase the Singapore Nautical Charts and Publications.

CHART AGENT	ADDRESS	TELEPHONE/FAX NO./EMAIL/WEBSITE
Cornes (Singapore) Pte Ltd	10 Anson Road #23-06/6A International Plaza Singapore 079903	Tel. No.: +65 6223 8320 Fax No.: +65 6223 8321 Email: sales9850@cspl.sg Website: http://www.cornes-charts.com
DPM (Singapore) Pte Ltd	2 Boon Leat Terrace, #05-02/03 Harbourside 2, Singapore 119844	Tel. No.: +65 6270 4060 Fax No.: +65 6276 3858 Email: sales@dpmsingapore.com.sg Website: http://www.dpmsingapore.com.sg
E.W. Liner Charts & Publications Pte Ltd	102F, Pasir Panjang Road, #08-01, Citilink Warehouse Complex, Singapore 118530	Tel. No.: +65 6323 0773 Fax No.: +65 6323 0775 Email: ewliner@singnet.com.sg Website: http://www.ewliner.com
Kelvin Hughes (Singapore) Pte Ltd	896 Dunearn Road #03-05 Sime Darby Centre Singapore 589472	Tel. No.: +65 6545 9880 Fax No.: +65 6545 8892 Email: leslie.khoo@kelvinhughes.com.sg Website: http://www.kelvinhughes.com
Motion Smith	15 Jalan Kilang Barat #08-01/05 Frontech Centre Singapore 159357	Tel. No.: +65 6220 5098 (After office hours:+65 8163 9993) Fax No.: +65 6225 4902 Email: sales@motsmith.com Website: http://www.motsmith.com

HYDROGRAPHIC NOTE - Instructions

1. Mariners are requested to notify the Chief Hydrographer, Maritime and Port Authority of Singapore, when new or suspected dangers to navigation are discovered, changes are observed in aids to navigation or where corrections to nautical publications may be necessary. Reports, which cannot be confirmed or are lacking in certain details should not be withheld.
2. Any ambiguities of time, positioning and depth should be stressed and any firm expectation of being able to check the information provided on a following voyage should be mentioned.
3. Mariners using satellite position fixing systems, eg. GPS, should provide details of equipment and datum used (where applicable). Where bearings (true or magnetic) are taken visually or by radar to fix a position, it should include more than two objects in order to provide a check on its accuracy. A position may also be defined by bearing and distance from a conspicuous object eg. beacon, lighthouse etc.
4. The note should include a tracing or a digital image of the chart used and the details should be clearly marked.
5. Echo sounders frequently register greater depths than the advertised maximum depth for the equipment, eg. a trace appearing at 50 metres may be in fact be 550 metres or even 1050 metres for equipment whose maximum depth is 500 metres. Erroneous depths caused by 2nd transmission error can usually be recognised by the following:
 - (a) the tracing being weaker than normal for the depth registered,
 - (b) the trace appearing to pass through the transmission line,
 - (c) the feathery nature of the trace.
6. Upon receipt of a hydrographic note, a Notice to Mariners may be issued. The sender's vessel or name is quoted as the source unless the same information is also received in foreign Notices to Mariners.
7. Reports of shoals, uncharted dangers and defects in aids to navigation may also be made to the appropriate Singapore Port Operations Control Centre on VHF Channels 10, 12, 14, 68 or 73.

HYDROGRAPHIC NOTE

To:

Chief Hydrographer
Maritime and Port Authority of Singapore
460 Alexandra Road PSA Building #20-00
Singapore 119963

Tel : (65) 6375 1227
Fax : (65) 6278 7646
Email : hydrographic@mpa.gov.sg

Sender's Contact Details :

Date :

Name of Vessel :

Address of Sender :

Tel : Fax :

Email :

Nature of Observation :

General Location :

Subject :

Position : Lat. Long.

Charts Used :

Date & Time of Observation :

Details :

.....

.....

Attachment :

Equipment Used :

Type of Position Fixing : GPS / DGPS Others :

Type of Echo Sounder :

Name and Signature :

Ship's/Company's Stamp :