



SINGAPOREAN NOTICES TO MARINERS

SECTION	CONTENT	Page
I	Index of Charts & Publications	1
II	New Publications	9
	Notices to Mariners and Chart Corrections	14
	Temporary and Preliminary Notices	16
III	Navigational Information	17
	Amendments to Publications	19
IV	Reprint of Radio Navigational Warnings	21
V	Extract of Admiralty Notices to Mariners for Dual-Badged Charts	22

The monthly Notices to Mariners contain corrective information affecting charts published by the Hydrographic Department, Maritime and Port Authority of Singapore. The information contained in these Notices should be updated on the charts affected. Notices under Section II apply only to the particular Singaporean Chart(s) indicated.

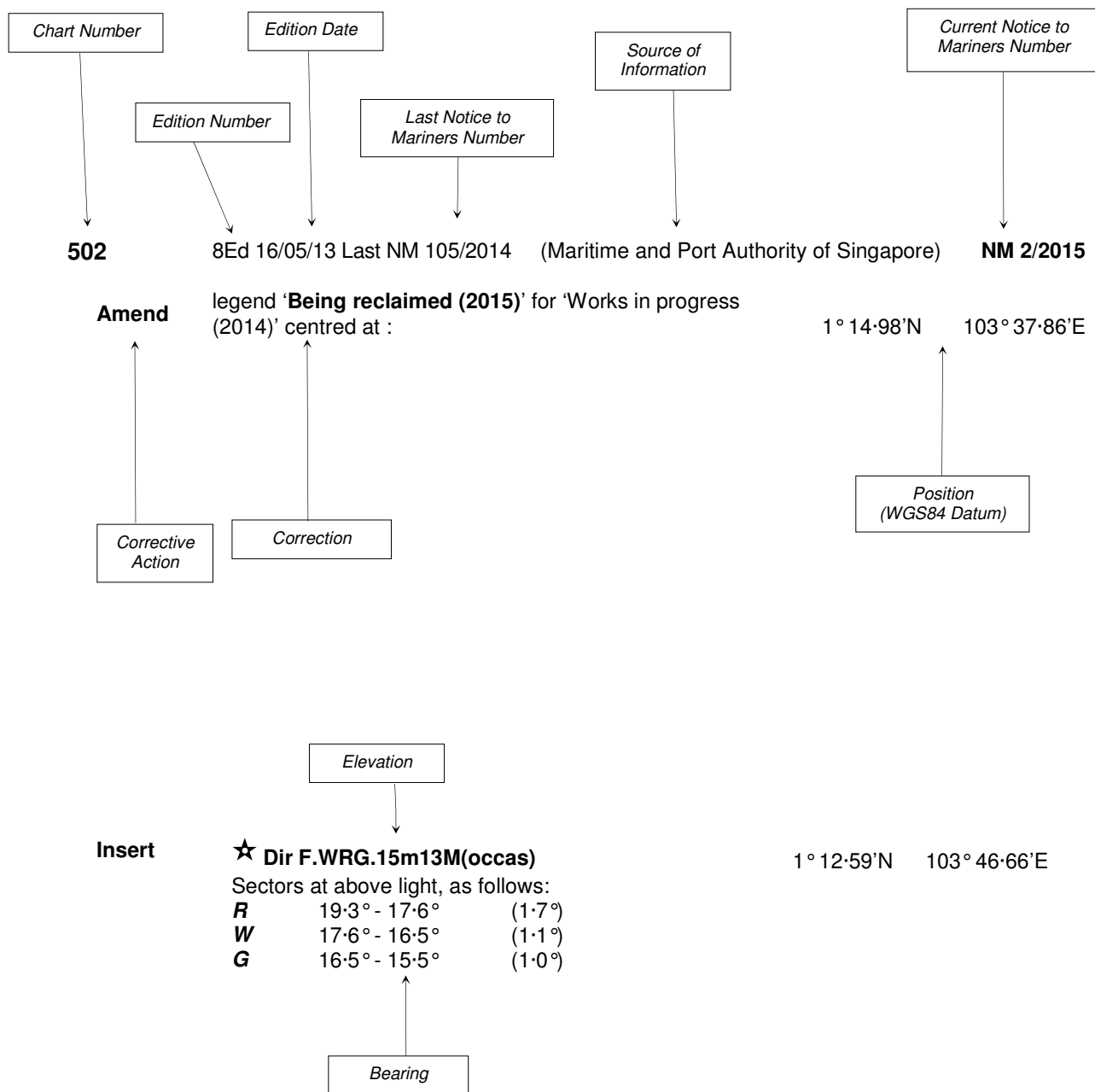
Mariners are requested to notify the Chief Hydrographer, Maritime and Port Authority of Singapore, immediately on the discovery of new dangers or suspected dangers to navigation and of changes or defects in aids to navigation. See Hydrographic Note on back page.

The monthly Singaporean Notices to Mariners can be accessed directly from the MPA website:
[http://www.mpa.gov.sg/sites/port_and_shipping/circulars_and_notices/singapore_notices_to_mariners\(ntm\).page](http://www.mpa.gov.sg/sites/port_and_shipping/circulars_and_notices/singapore_notices_to_mariners(ntm).page)

Hydrographic Department
Maritime and Port Authority of Singapore
7B Keppel Road
#20-00 Tanjong Pagar Complex
Singapore 089055
Tel: (65) 6325 2027
Fax: (65) 6226 1076
Email: hydrographic@mpa.gov.sg

EXPLANATION OF FORMAT

The elements of a typical chart correction are explained below.



Notes:

- a) Notice to Mariners number followed by:
 - T** indicates a Temporary Notice (eg. **NM 3T/2015**).
 - P** indicates a Preliminary Notice (eg. **NM 4P/2015**).
- b) Bearings are true reckoned clockwise from 000° to 359°; those relating to lights are from seaward.
- c) Heights and elevations are above Mean High Water Springs.

I
INDEX OF CHARTS AND PUBLICATIONS

INDEX OF AFFECTED CHARTS

DESCRIPTION	NOTICE NO.	PAGE NO.
Index of Singaporean Charts	-	3, 4
Index of Dual-Badged Charts	-	5 to 7
Index of Singapore Electronic Navigational Chart (ENC)	-	8
New Edition Singaporean Charts	-	9
New Edition Dual Badged Charts	-	10, 13
New Edition Electronic Navigational Chart (ENC)	-	13
Singaporean Chart GSP1/SP1	30, 31, 32	14
Singaporean Chart 200	33	14
Singaporean Chart 202	31	14
Singaporean Chart 501	30, 31	15
Singaporean Chart 502	30, 31	15
Singaporean Chart 503	31	15
Temporary and Preliminary Notices	-	16
SEA ME WE 5 Cable System (SMW5)	34	17
Singapore Port Marine Notices	*35	18
Singaporean Print-On-Demand (POD) Charts	*36	18
Amendments to Publications	*37	19, 20
Reprint of Radio Navigational Warnings	-	21
Extract of Admiralty Notices to Mariners for Dual-Badged Charts	-	22, 23
Singapore Electronic Navigational Chart (ENC) Distributors	-	24
Chart Distributors for the Maritime and Port Authority of Singapore Nautical Charts and Publications	-	25

*Source: Maritime and Port Authority of Singapore

I
INDEX OF CHARTS AND PUBLICATIONS

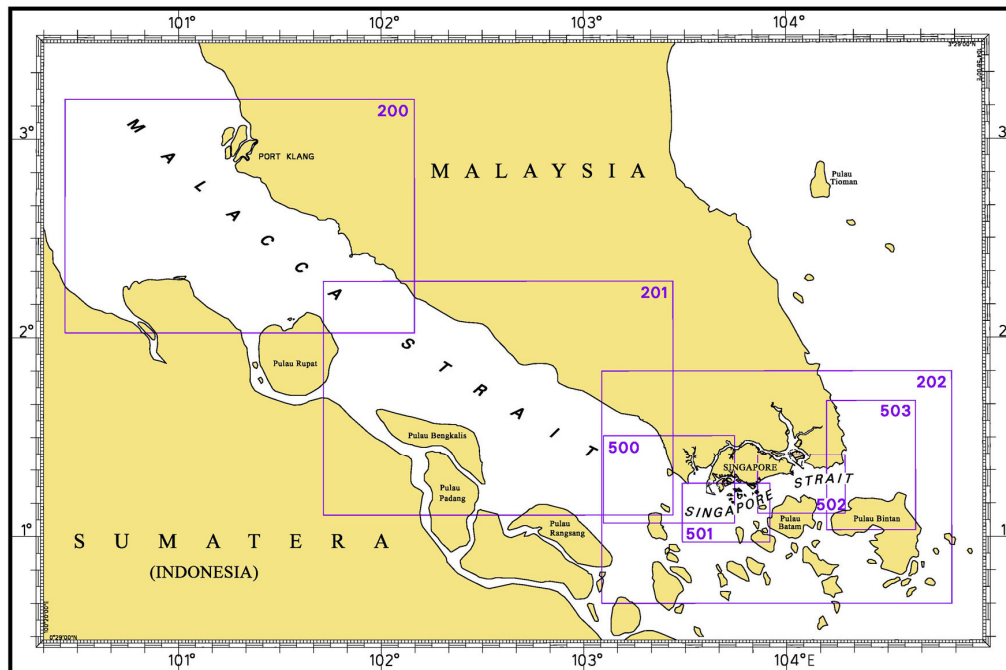
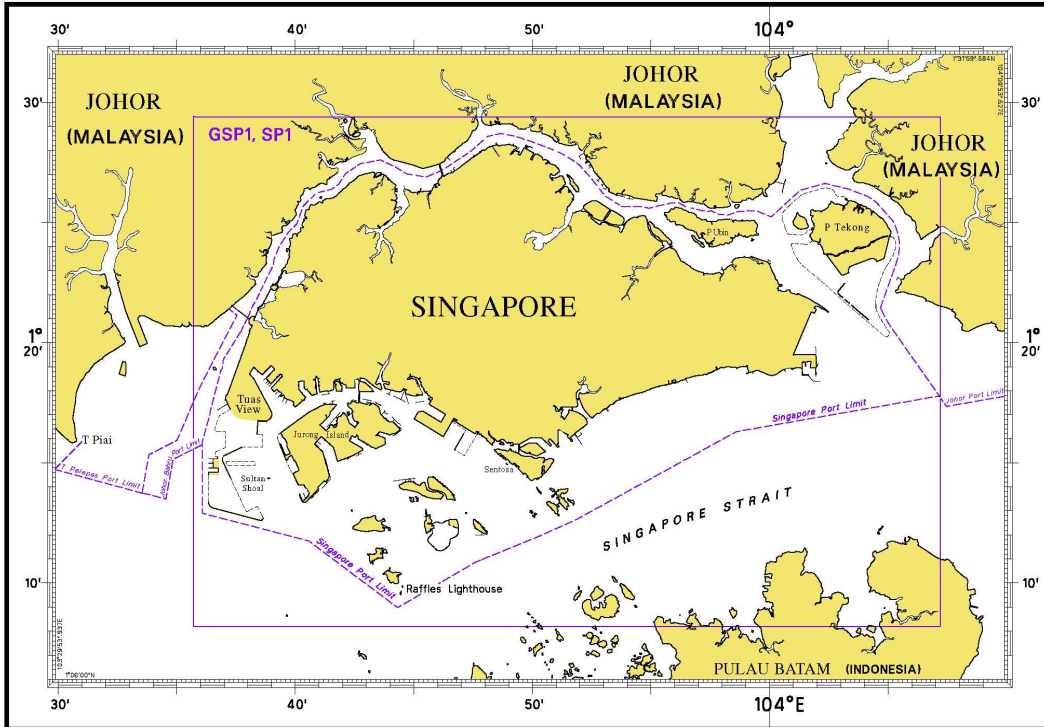
INDEX OF NOTICES

NOTICE NO.	DESCRIPTION	PAGE NO.
-	Index of Singaporean Charts	3, 4
-	Index of Dual-Badged Charts	5 to 7
-	Index of Singapore Electronic Navigational Chart (ENC)	8
-	New Edition Singaporean Charts	9
-	New Edition Dual Badged Charts	10, 13
-	New Edition Electronic Navigational Chart (ENC)	13
30, 31, 32	Singaporean Chart GSP1/SP1	14
33	Singaporean Chart 200	14
31	Singaporean Chart 202	14
30, 31	Singaporean Chart 501	15
30, 31	Singaporean Chart 502	15
31	Singaporean Chart 503	15
-	Temporary and Preliminary Notices	16
34	SEA ME WE 5 Cable System (SMW5)	17
*35	Singapore Port Marine Notices	18
*36	Singaporean Print-On-Demand (POD) Charts	18
*37	Amendments to Publications	19, 20
-	Reprint of Radio Navigational Warnings	21
-	Extract of Admiralty Notices to Mariners for Dual-Badged Charts	22, 23
-	Singapore Electronic Navigational Chart (ENC) Distributors	24
-	Chart Distributors for the Maritime and Port Authority of Singapore Nautical Charts and Publications	25

* Source: Maritime and Port Authority of Singapore

I INDEX OF CHARTS AND PUBLICATIONS

INDEX OF SINGAPOREAN CHARTS



Notes:
Updated Singaporean Charts are available through our Print-On-Demand (POD) Chart Service. For more information, refer to Section III – Navigational Information. These charts can be purchased from our Chart Distributors.

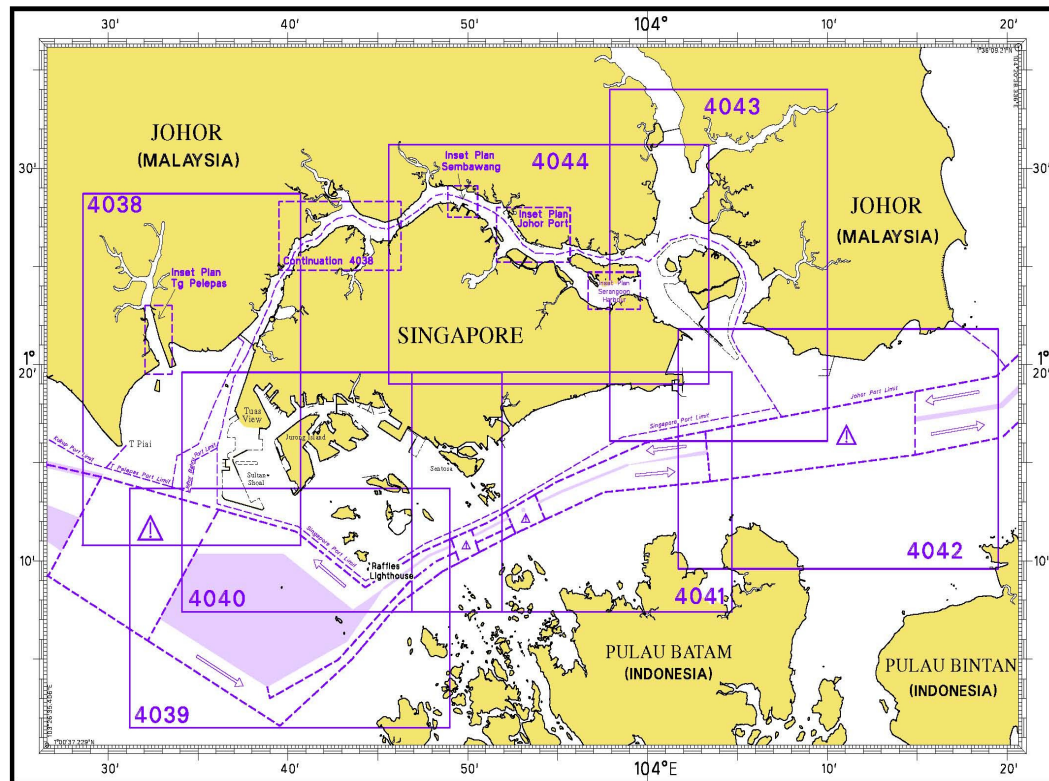
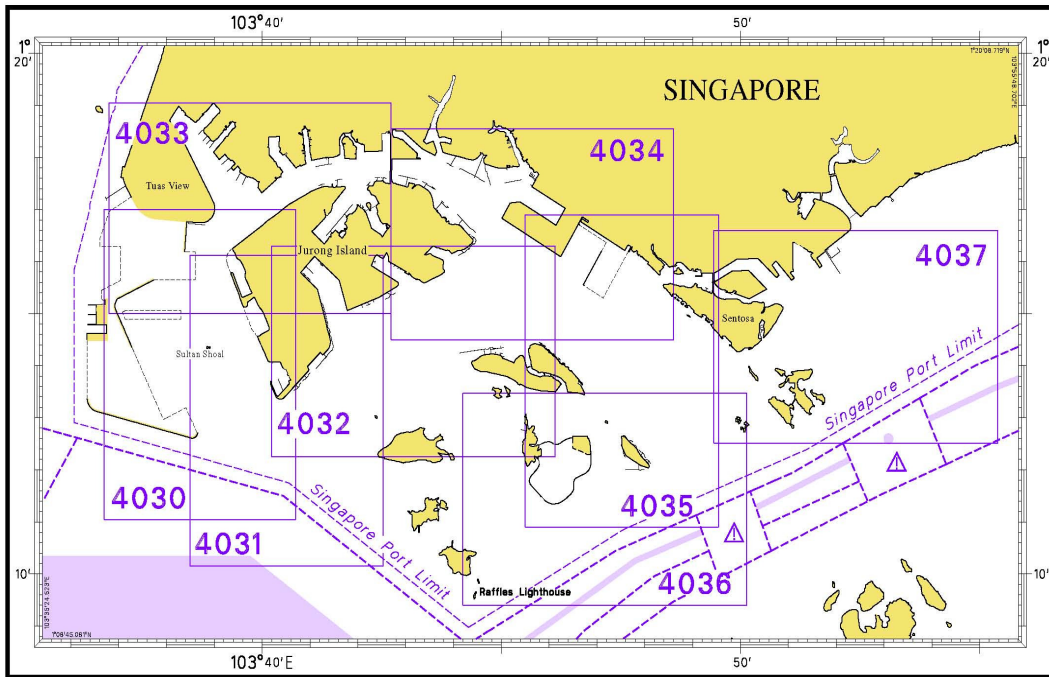
I
INDEX OF CHARTS AND PUBLICATIONS

SINGAPOREAN CHARTS

Chart No.	Chart Title	Scale 1:	Date Published of Latest Edition
GSP1	Anchorage and Aids to Navigation (with Area Reference)	60 000	02/03/2015
SP1	Anchorage and Aids to Navigation	60 000	02/03/2015
200	Malacca Strait - Port Klang to Tanjung Keling	200 000	22/09/2011
201	Malacca Strait - Tanjung Keling to Western Entrance of Singapore Strait	200 000	15/08/2014
202	Singapore Strait	200 000	26/09/2013
500	Malacca and Singapore Straits – Pulau Pisang to Raffles Lighthouse	75 000	26/09/2013
501	Singapore Strait – Western Part	50 000	03/05/2012
502	Singapore Strait - Eastern Part	50 000	03/05/2012
503	South China Sea - Eastern Approaches and Entrance to Singapore Strait	75 000	15/08/2014
-	Charts for Small Craft – Singapore Strait & Adjacent Waterways	10 000 to 200 000	02/01/2015
1	Symbols Abbreviations Terms and S-57 Objects used on Singapore Nautical and Electronic Navigational Charts. Available at MPA website http://www.mpa.gov.sg/sites/global_navigation/publications/chart1.page	-	28/07/2011

I INDEX OF CHARTS AND PUBLICATIONS

INDEX OF DUAL-BADGED CHARTS



I
INDEX OF CHARTS AND PUBLICATIONS

DUAL- BADGED CHARTS

Chart No.	Chart Title	Scale 1:	Date Published of Latest Edition
4030	Port of Singapore West Jurong Anchorages and Temasek Fairway	10 000	15/05/2014
4031	Port of Singapore Western Approaches to Jurong Island	10 000	15/05/2014
4032	Port of Singapore Sinki Fairway	10 000	15/05/2014
4033	Port of Singapore Tuas Bay, West Jurong Channel and Pesek Basin	10 000	15/05/2014
4034	Port of Singapore East Jurong Channel, Pasir Panjang Terminal and West Keppel Fairway	10 000	28/08/2014
4035	Port of Singapore Western Anchorages, Jong Fairway and Cruise Bay	10 000	28/08/2014
4036	Port of Singapore Raffles Lighthouse to The Sisters	10 000	25/04/2013
4037	Port of Singapore Keppel Harbour, Tanjong Pagar Terminal and Approaches	10 000	25/04/2013
4038	Malaysia and Singapore Johor Strait – Western Part	30 000	26/09/2013
4039	Indonesia, Singapore and Malaysia Western Approaches to Main Strait	30 000	24/04/2014
4040	Singapore, Indonesia and Malaysia Tuas View to Pulau Sakijang Bendera (S. John's Island)	30 000	14/08/2014
4041	Singapore and Indonesia Pulau Sebarok to Changi	30 000	14/08/2014

I
INDEX OF CHARTS AND PUBLICATIONS

DUAL- BADGED CHARTS

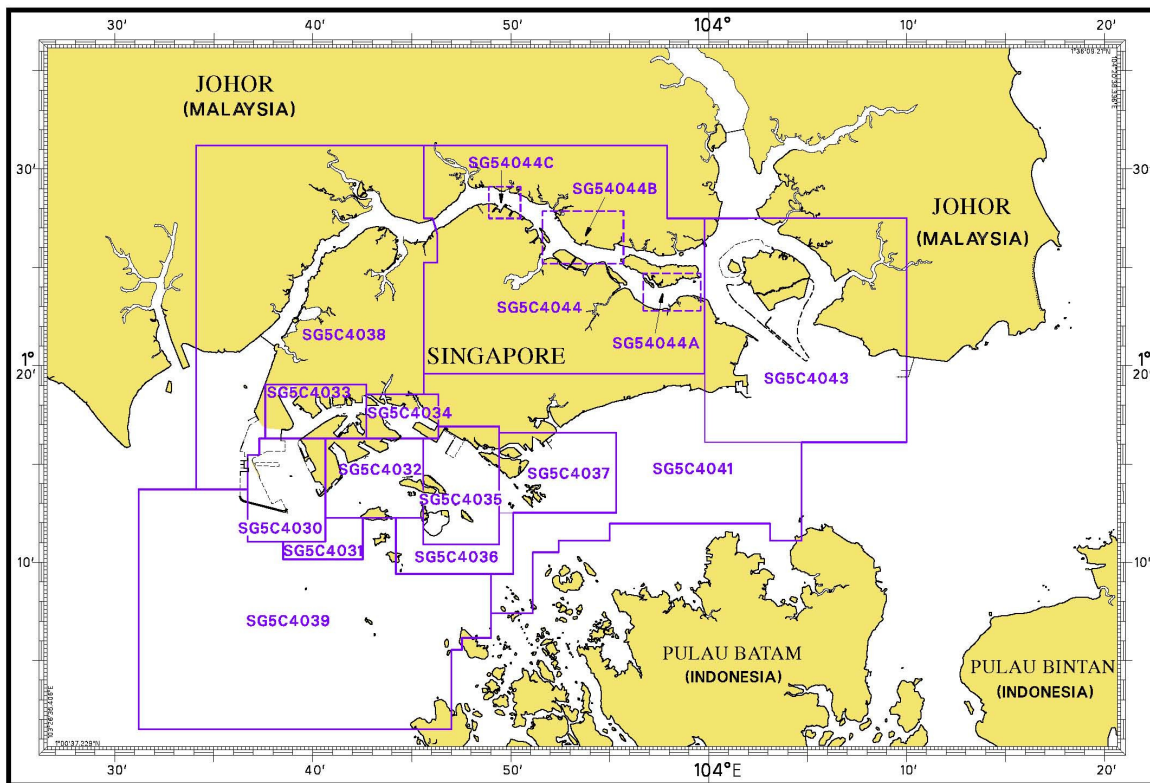
Chart No.	Chart Title	Scale 1:	Date Published of Latest Edition
4042	Indonesia, Malaysia and Singapore Changi to Pulau Mungging and Tanjung Buntan to Tanjung Tondang	30 000	24/04/2014
4043	Malaysia and Singapore Kuala Johor and Sungai Johor	30 000	14/08/2014
4044	Singapore and Malaysia Johor Strait - Eastern Part	30 000	14/08/2014

SINGAPOREAN PUBLICATIONS

Item	Title
1	Singapore Tide Tables Year 2015
2	Singapore Port Information 2014/2015

I INDEX OF CHARTS AND PUBLICATIONS

INDEX OF SINGAPORE ELECTRONIC NAVIGATIONAL CHART (ENC)



SINGAPORE ELECTRONIC NAVIGATIONAL CHART (ENC)

ENC Name	ENC Coverage	ENC Edition
SG5C4030	West Jurong Anchorages and Temasek Fairway	7 th Edition (1/09/2014)
SG5C4031	Western Approaches to Jurong Island	7 th Edition (1/09/2014)
SG5C4032	Sinki Fairway	9 th Edition (1/09/2014)
SG5C4033	Tuas Bay, West Jurong Channel and Pesek Basin	7 th Edition (1/09/2014)
SG5C4034	East Jurong Channel, Pasir Panjang Terminal and West Keppel Fairway	12 th Edition (1/09/2014)
SG5C4035	Western Anchorages, Jong Fairway and Cruise Bay	15 th Edition (1/09/2014)
SG5C4036	Raffles Lighthouse to The Sisters	8 th Edition (1/09/2014)
SG5C4037	Keppel Harbour, Tanjong Pagar Terminal and Approaches	8 th Edition (1/09/2014)
SG5C4038	Johor Strait – Western Part	7 th Edition (1/09/2014)
SG5C4039	Western Approaches to Main Strait	7 th Edition (1/09/2014)
SG5C4041	Pulau Sebarok to Changi	8 th Edition (1/09/2014)
SG5C4043	Kuala Johor	10 th Edition (1/09/2014)
SG5C4044	Johor Strait – Eastern Part	10 th Edition (1/09/2014)
SG54044A	Serangoon Harbour	1 st Edition (1/09/2014)
SG54044B	Pelabuhan Johor (Johor Port)	1 st Edition (1/09/2014)
SG54044C	Sembawang	1 st Edition (1/09/2014)

II NEW PUBLICATIONS

NEW EDITION SINGAPOREAN CHARTS PUBLISHED ON 2ND MARCH 2015

Chart Number : *GSP1
Title : Anchorages and Aids to Navigation
Coverage : Lat 01° 08' 20 N 01° 29' 40 N
 Long 103° 35' 70 E 104° 07' 20 E
Scale : 1: 60 000
Date Published : 2nd March 2015
Size of Chart : 973·9 x 651·2 mm
Descriptions : This new edition includes new changes to aids to navigation, working areas, submarine cables, depth contours from the latest surveys in the vicinity of west of Tuas View reclamation, West Johor Strait, Temasek Fairway, Sinki Fairway, Selat Pandan, West Keppel Fairway, East Jurong Channel, Pasir Panjang, west of Sentosa, south of St John Island, Eastern Fairway, Cable area at Tanah Merah, Pulau Tekong and approaches to Sembawang Shipyard.

The existing chart of the same number published on 15th April 2014 is superseded.

* This chart is provided with a grid area reference.

Chart Number : SP1
Title : Anchorages and Aids to Navigation
Coverage : Lat 01° 08' 20 N 01° 29' 40 N
 Long 103° 35' 70 E 104° 07' 20 E
Scale : 1: 60 000
Date Published : 2nd March 2015
Size of Chart : 973·9 x 651·2 mm
Descriptions : This new edition includes new changes to aids to navigation, working areas, submarine cables, depth contours from the latest surveys in the vicinity of west of Tuas View reclamation, West Johor Strait, Temasek Fairway, Sinki Fairway, Selat Pandan, West Keppel Fairway, East Jurong Channel, Pasir Panjang, west of Sentosa, south of St John Island, Eastern Fairway, Cable area at Tanah Merah, Pulau Tekong and approaches to Sembawang Shipyard.

The existing chart of the same number published on 15th April 2014 is superseded.

II NEW PUBLICATIONS

NEW EDITION DUAL- BADGED CHARTS TO BE PUBLISHED ON 9TH APRIL 2015

Chart Number : 4043
Title : Malaysia and Singapore
 Kuala Johor and Sungai Johor
Coverage : Lat 01° 16' 10 N 01° 34' 00 N
 Long 103° 57' 90 E 104° 10' 00 E
Scale : 1: 30 000
Date Published : 9th April 2015
Size of Chart : 748.1 x 1099.6 mm
Descriptions : This new edition includes updated surveys covering north and south of Pulau Ubin, around Pulau Tekong, Kuala Johor and Eastern Fairway.

The existing chart of the same number published on 14th August 2014 will be superseded.

Chart Number : 4044
Title : Malaysia and Singapore
 Johor Strait, Eastern Part
Coverage : Lat 01° 19' 00 N 01° 31' 20 N
 Long 103° 45' 60 E 104° 03' 40 E
Scale : 1: 30 000
Date Published : 9th April 2015
Size of Chart : 1100.5 x 749.5 mm
Descriptions : This new edition includes updated surveys covering East Johor Strait from Causeway to Serangoon Harbour, north of Pulau Ubin, north of Pulau Tekong and Kuala Johor.

The existing chart of the same number published on 14th August 2014 will be superseded.

II NEW PUBLICATIONS

NEW EDITION DUAL- BADGED CHARTS TO BE PUBLISHED ON 7TH MAY 2015

Chart Number : 4030
Title : Port of Singapore
 West Jurong Anchorages and Temasek Fairway
Coverage : Lat 01° 11' 05 N 01° 17' 00 N
 Long 103° 36' 70 E 103° 40' 70 E
Scale : 1: 10 000
Date Published : 7th May 2015
Size of Chart : 742.0 x 1096.5 mm
Descriptions : This new edition includes updated surveys covering Temasek Fairway, West Jurong Anchorage, West Jurong Channel, west Jurong Island and Sinki Fairway.

The existing chart of the same number published on 15th May 2014 will be superseded.

Chart Number : 4031
Title : Port of Singapore
 Western Approaches to Jurong Island
Coverage : Lat 01° 10' 15 N 01° 16' 12 N
 Long 103° 38' 50 E 103° 42' 53 E
Scale : 1: 10 000
Date Published : 7th May 2015
Size of Chart : 747.5 x 1100.2 mm
Descriptions : This new edition includes updated surveys covering Temasek Fairway, west of Jurong Island, Banyan Basin, Sinki Fairway and south of Sudong Explosive Anchorage.

The existing chart of the same number published on 15th May 2014 will be superseded.

Chart Number : 4033
Title : Port of Singapore
 Tuas Bay, West Jurong Channel and Pesek Basin
Coverage : Lat 01° 15' 00 N 01° 19' 05 N
 Long 103° 36' 80 E 103° 42' 70 E
Scale : 1: 10 000
Date Published : 7th May 2015
Size of Chart : 1094.4 x 746.4 mm
Descriptions : This new edition includes updated surveys covering Temasek Fairway, West Jurong Channel, Mobil Jetty and Tuas View Extension.

The existing chart of the same number published on 15th May 2014 will be superseded.

II NEW PUBLICATIONS

NEW EDITION DUAL- BADGED CHARTS TO BE PUBLISHED ON 28TH MAY 2015

Chart Number : 4034
Title : Port of Singapore
 East Jurong Channel, Pasir Panjang Terminal and West Keppel
 Fairway
Coverage : Lat 01° 14' 50 N 01° 18' 55 N
 Long 103° 42' 70 E 103° 48' 60 E
Scale : 1: 10 000
Date Published : 28th May 2015
Size of Chart : 1094.3 x 746.3 mm
Descriptions : This new edition includes updated surveys covering East Jurong
 Channel, Pasir Panjang Terminal Berth 34, West Keppel Fairway
 and north of Jurong Island.

The existing chart of the same number published on 28th August 2014 will be superseded.

Chart Number : 4035
Title : Port of Singapore
 Western Anchorages, Jong Fairway and Cruise Bay
Coverage : Lat 01° 10' 90 N 01° 16' 90 N
 Long 103° 45' 50 E 103° 49' 54 E
Scale : 1: 10 000
Date Published : 28th May 2015
Size of Chart : 1105.7 x 749.4 mm
Descriptions : This new edition includes updated surveys covering Pasir Panjang
 Terminal Berth P34, East Jurong Channel, west of Sentosa and
 east of Pulau Sebarok.

The existing chart of the same number published on 28th August 2014 will be superseded.

Chart Number : 4036
Title : Port of Singapore
 Raffles Lighthouse to The Sisters
Coverage : Lat 01° 09' 40 N 01° 13' 47 N
 Long 103° 44' 20 E 103° 50' 13 E
Scale : 1: 10 000
Date Published : 28th May 2015
Size of Chart : 1100.0 x 750.1 mm
Descriptions : This new edition includes updated surveys covering Sisters
 Fairway, Southern Fairway, east of Pulau Sebarok, area covering
 the Shell SBM pipeline, Shell SBM and Semakau Spoil Ground.

The existing chart of the same number published on 25th April 2013 will be superseded.

II NEW PUBLICATIONS

NEW EDITION DUAL- BADGED CHARTS TO BE PUBLISHED ON 28TH MAY 2015

Chart Number : 4037
Title : Port of Singapore
 Keppel Harbour, Tanjong Pagar Terminal and Approaches
Coverage : Lat 01° 12' 52 N 01° 16' 59 N
 Long 103° 49' 40 E 103° 55' 34 E
Scale : 1: 10 000
Date Published : 28th May 2015
Size of Chart : 1101.8 x 750.1 mm
Descriptions : This new edition includes updated surveys covering Sisters Fairway, Southern Fairway, East Keppel Fairway, Keppel Harbour, Tanjong Pagar Terminal, Marina South Pier and approaches to East Keppel Fairway.

The existing chart of the same number published on 25th April 2013 will be superseded.

NEW EDITION SINGAPORE ENC TO BE PUBLISHED ON 9TH APRIL 2015

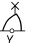

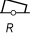








ENC Name : SG5C4043
Location : Kuala Johor and Sungai Johor
Coverage : Lat 01° 16' 10 N 01° 27' 50 N
 Long 103° 59' 80 E 104° 10' 00 E
Compilation Scale : 1: 22 000
Date Released : 9th April 2015
Descriptions : This new edition includes updated surveys covering Pulau Tekong, Kuala Johor and Eastern Fairway.

The existing cell of the same name published on 14th August 2014 will be superseded.

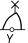

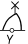

ENC Name : SG5C4044
Location : Singapore and Malaysia
 Johor Strait, Eastern Part
Coverage : Lat 01° 19' 60 N 01° 31' 20 N
 Long 103° 45' 60 E 103° 59' 80 E
Compilation Scale : 1: 22 000
Date Released : 9th April 2015
Descriptions : This new edition includes updated surveys covering East Johor Strait from Causeway to Serangoon Harbour, north of Pulau Ubin.

The existing cell of the same name published on 14th August 2014 will be superseded.

II NOTICES TO MARINERS AND CHART CORRECTIONS

GSP1/SP1	10Ed 2/03/15 Last NM 24/2015	(Admiralty Notice No. 10/1155/2015)		NM 30/2015
Insert	 Fl.Y.5s		1°10-50'N	103°53-45'E
			1°09-88'N	103°54-67'E
		(Admiralty Notice No. 10/1124/2015)		NM 31/2015
Amend	light-beacon to, Fl.G.5s7m6M		1°10-09'N	103°52-84'E
Move	 LFl.10s , from:		1°09-94'N	103°54-74'E
	to:		1°09-58'N	103°54-91'E
		(Royal Malaysian Navy Notice No. 2/44/2015)		NM 32/2015
Insert	 Fl.R.5s TLR		1°25-71'N	104°00-29'E
	 Fl.G.5s TLG		1°26-29'N	104°00-99'E
	 Fl.Y.5s TLS1		1°26-39'N	104°00-45'E
	 Fl(2)Y.10s TLS2		1°25-88'N	104°00-32'E
	 Fl.Y.5s TLSSP		1°25-80'N	104°00-60'E
<hr/>				
200	3Ed 22/09/11 Last NM 7/2015	(Indonesia Notice No. 3/24 to 27/2015)		NM 33/2015
Insert	 Fl.G.4s10m11M		2°20-76'N	101°05-29'E
	 Fl.R.4s10m11M		2°20-70'N	101°10-06'E
	 Fl.G.3s10m11M		2°11-69'N	101°07-50'E
	 Fl.R.2s10m11M		2°15-36'N	101°10-77'E
<hr/>				
202	7Ed 26/09/13 Last NM 25/2015	(Admiralty Notice No. 10/1124/2015)		NM 31/2015
Insert	depth 26 , enclosed by 30m contour		1°06-80'N	104°12-56'E
	depth 17₁		1°09-24'N	104°13-20'E
Delete	depth 18₂		1°09-37'N	104°12-97'E

II
NOTICES TO MARINERS AND CHART CORRECTIONS

501	6Ed 3/05/12 Last NM 25/2015	(Admiralty Notice No. 10/1155/2015)		NM 30/2015
Insert	 Fl.Y.5s		1°10-50'N	103°53-45'E
			1°09-88'N	103°54-67'E
		(Admiralty Notice No. 10/1124/2015)		NM 31/2015
Insert	depth 27 , enclosed by 30m contour		1°11-59'N	103°51-51'E
Amend	light-beacon to, Fl.G.5s7m6M		1°10-09'N	103°52-84'E
Move	 LFl.10s , from:		1°09-94'N	103°54-74'E
	to:		1°09-58'N	103°54-91'E
<hr/>				
502	6Ed 3/05/12 Last NM 1/2015	(Admiralty Notice No. 10/1155/2015)		NM 30/2015
Insert	 Fl.Y.5s		1°10-50'N	103°53-45'E
			1°09-88'N	103°54-67'E
		(Admiralty Notice No. 10/1124/2015)		NM 31/2015
Insert	depth 27 , enclosed by 30m contour		1°11-59'N	103°51-51'E
	depth 17 and extend 20m contour N to enclose		1°09-56'N	103°55-40'E
	depth 18₂		1°11-27'N	103°56-39'E
	depth 26 and extend 30m contour W to enclose		1°10-58'N	103°58-58'E
	depth 28 enclosed by 30m contour		1°12-56'N	104°04-14'E
	depth 17₁ enclosed by 20m contour		1°09-24'N	104°13-20'E
Delete	depth 30₅		1°12-47'N	104°04-21'E
	depth 18₂ , and 20m contour		1°09-07'N	104°13-20'E
Amend	light-beacon to, Fl.G.5s7m6M		1°10-09'N	103°52-84'E
Move	 LFl.10s , from:		1°09-94'N	103°54-74'E
	to:		1°09-58'N	103°54-91'E
<hr/>				
503	5Ed 15/08/14 Last NM 91/2014	(Admiralty Notice No. 10/1124/2015)		NM 31/2015
Insert	depth 26 , enclosed by 30m contour		1°06-80'N	104°12-56'E
	depth 17₁ , enclosed by 20m contour		1°09-24'N	104°13-20'E
Delete	depth 18₂ and 20m contour		1°09-12'N	104°13-20'E

II
TEMPORARY AND PRELIMINARY NOTICES

NIL

III NAVIGATIONAL INFORMATION

- (NM 34/2015)** : **SEA ME WE 5 CABLE SYSTEM (SMW5), Cable Route Feasibility Survey.**
- Purpose** : The SMW5 Cable Route Feasibility Survey will be executed from Singapore Port Limits to outside of the Traffic Separation Scheme (TSS) Eastbound Traffic Lane of Sector 6, thence to Malacca Strait.
- Survey Vessel** : EGS SURVEYOR
- Call Sign** : PORX
- Date of work** : With effect from 26th March 2015 to 13th April 2015.
- Duration of work** : Within the stipulated period, the survey vessel will take up to 19 days, to start and finish the cable route feasibility survey.
- Operating hours** : Daily, from 0000 hrs to 2400 hrs (including Sundays and Public Holidays).
- Survey Corridor** : The Centre Line of the cable route feasibility survey is defined by the following points:

No.	(RPL Co-ordinates; WGS84 Datum)	
	Latitude (N)	Longitude (E)
1	01° 14.888 '	103° 36.068 '
2	01° 11.654 '	103° 35.690 '
3	01° 10.634 '	103° 35.601 '
4	01° 10.592 '	103° 35.568 '
5	01° 10.571 '	103° 35.520 '
6	01° 11.118 '	103° 31.516 '
7	01° 11.680 '	103° 30.070 '
8	01° 11.874 '	103° 28.982 '
9	01° 12.415 '	103° 27.135 '
10	01° 12.688 '	103° 26.480 '
11	01° 12.901 '	103° 25.092 '
12	01° 12.960 '	103° 24.176 '
13	01° 13.139 '	103° 23.511 '
14	01° 13.560 '	103° 22.526 '
15	01° 13.976 '	103° 21.320 '
16	01° 14.084 '	103° 20.189 '
17	01° 14.568 '	103° 18.800 '

The Survey Corridor extends to 250 metres on either side of the Center Line ie the total width of the Survey Corridor is 500 metres.

- Charts affected** : Singaporean Charts: GSP1/SP1, 201, 202, 500 and 501
Dual Badged Charts: 4038, 4039 and 4040
- Caution** : Mariners are advised to:
a) navigate with caution, and
b) give a wide berth when approaching the survey vessel.
- Source** : Maritime and Port Authority of Singapore

III NAVIGATIONAL INFORMATION

***(NM 35/2015) SINGAPORE PORT MARINE NOTICES**

The Port Marine Notices shortlisted below would be of particular interest to mariners. Details and complete list of Port Marine Notices are available at this link:

http://www.mpa.gov.sg/sites/port_and_shipping/circulars_and_notices/port_marine_notices.page

PMN No.	Subject
24/2015	Mooring and unmooring of vessels at Banyan Basin, Jurong Island.
26/2015	Construction of T-Bund at Marina East Staging Ground.

***(NM 36/2015) SINGAPOREAN PRINT-ON-DEMAND (POD) CHARTS**

Print-On-Demand (POD) Charts are the most up-to-date paper nautical charts printed for navigational use. These nautical charts are produced in accordance with the International Hydrographic Organisation (IHO) chart specifications. These official nautical charts are continually updated to the latest Notices to Mariners before they are printed and sold to users.

These POD Charts include 200, 201, 202, 500, 501, 502 and 503.

BENEFITS TO OUR CUSTOMERS

Convenience

Customers need not make numerous hand corrections to the nautical charts before use. In addition the updated POD Charts are more accurate and reliable than offset printed charts with hand corrections.

Clarity

Clarity in the presentation of updated information as compared to lithographic printed charts, where in some cases there are several overlapping corrections over existing information.

Coverage

The POD Charts cover the Malacca and Singapore Straits, from One Fathom Bank to Horsburgh Lighthouse.

*Source: Maritime and Port Authority of Singapore

**III
AMENDMENTS TO PUBLICATIONS**

***(NM 37/2015) UPDATING OF PUBLICATION “SINGAPORE PORT INFORMATION 2014/2015”**

1. Page 134

RECLAMATION OFF TUAS VIEW

Delete the following:

Name of Beacon/Buoy	Position Lat. N Long. E Deg Min	Structure Colour & Shape	Light Characteristic	Owner
HS-TVE-01 Buoy	01° 15.087' 103° 37.551'	Yellow pillar with 'X' topmark	Fl.Y.3s (sync)	Hiap Shing
HS-TVE-02 Buoy	01° 14.867' 103° 37.536'	Yellow pillar with 'X' topmark	Fl.Y.3s (sync)	Hiap Shing
HS-TVE-03 Buoy	01° 14.867' 103° 37.154'	Yellow pillar with 'X' topmark	Fl.Y.3s (sync)	Hiap Shing
HS-TVE-04 Buoy	01° 14.865' 103° 37.874'	Yellow pillar with 'X' topmark	Fl.Y.3s (sync)	Hiap Shing
HS-TVE-05 Buoy	01° 15.086' 103° 37.874'	Yellow pillar with 'X' topmark	Fl.Y.3s (sync)	Hiap Shing
HS-TVE-06 Buoy	01° 15.086' 103° 38.243'	Yellow pillar with 'X' topmark	Fl.Y.3s (sync)	Hiap Shing
HS-TVE-07 Buoy	01° 14.865' 103° 38.243'	Yellow pillar with 'X' topmark	Fl.Y.3s (sync)	Hiap Shing

2. Page 168 – Item 9

WHARVES AND BERTHS

MARINA SOUTH – (MARINA BAY CRUISE CENTRE) (1°15.9'N, 103°51.6'E)

Amend the following:

Berth	Length of Berth	Depth Alongside (Year Surveyed)
1	373m	11.2m (2014)
2	396m	11.5m (2014)

3. Page 172- Item 23

JURONG ISLAND (OILTANKING SINGAPORE LTD) (1°16.8'N, 103°44.1'E)

Amend the following:

Berth	Length of Berth	Max LOA	Depth Alongside (Year Surveyed)	Controlling Depth In Approaches
9	350m	315m	15.8m (2014)	14.9m

III
AMENDMENTS TO PUBLICATIONS

4. Page 181- Item 44

JURONG ISLAND – BANYAN BASIN
(EXXON CHEMICAL SINGAPORE PTE LTD) (1°15.8'N, 103°41.0'E)

Amend the following:

Berth	Length of Berth	Width of Berth	Depth Alongside (Year Surveyed)	Controlling Depth In Approaches
OBE1	155m	22m	11.6m (2007)	16.5m
OBE2	101m	31m	3.0m (2008)	

*Source: Maritime and Port Authority of Singapore

IV
REPRINT OF RADIO NAVIGATIONAL WARNINGS

The following Radio Navigational Warnings have been shortlisted, as they would be of particular interest to mariners.

TT175

VESSELS IN EAST JOHOR STRAIT ARE ADVISED TO NAVIGATE WITH CAUTION WHEN NEAR THE PROJECT AREAS OFF PULAU TEKONG, CHANGI AND MALANG PAPAN AS SHALLOW WATER AREAS EXIST. VESSELS ARE ADVISED TO KEEP LOOKOUT FOR TUGS AND BARGES NAVIGATING NEAR THE PROJECT AREAS AND PASSENGER FERRIES CROSSING BETWEEN CHANGI AND PULAU TEKONG AND VICINITY OF PASIR GUDANG.

TT240

SALVAGE OPERATIONS IS BEING CONDUCTED IN THE VICINITY OF HORSBURGH LIGHTHOUSE IN POSITION LAT 01° 19.814'N LONG 104° 24.337'E.
ALL VESSELS APPROACHING THE VICINITY ARE ADVISED TO MAINTAIN A GOOD LOOKOUT AND KEEP AT LEAST 5 CABLES CLEAR FROM HORSBURGH LIGHTHOUSE.

TT254

A NEW YELLOW BUOY NAMED "ADCP BUOY B" FL (Y) EVERY 4 SECs HAS BEEN LAID AT POSITION LAT 01°15.185'N LONG 103°55.870'E GRID REF 5515D. ALL VESSEL ARE ADVISED TO NAVIGATE WITH CAUTION.

TT255

EGS SURVEYOR IS CARRYING OUT SUBMARINE CABLE ROUTE FEASIBILITY SURVEY IN THE WESTBOUND AND EASTBOUND TRAFFIC LANES IN THE TSS FROM 28 MAR 2015 TO 7 APRIL 2015. THE CABLE ROUTE SURVEY ROUTING IS MARKED BY WAYPOINTS OF POINT 1 TO POINT 4.

PT 4 TO PT 3 FROM 28 MAR TO 30 MAR

PT 2 TO PT 3 FROM 31 MAR TO 04 APR

PT 1 TO PT 2 FROM 05 APR TO 07 APR

WORKING COORDINATES AS FOLLOWS :

PT 1 01°14.888'N 103°36.068'E

PT 2 01°10.634'N 103°35.601'E

PT 3 01°12.901'N 103°25.092'E

PT 4 01°14.568'N 103°18.800'E

ALL VESSELS ARE ADVISED TO NAVIGATE WITH EXTRA CAUTION.

TT961

VESSELS INTENDING TO CROSS THE TRAFFIC SEPARATION SCHEME(TSS) OR PRECAUTIONARY AREAS IN THE SINGAPORE STRAIT DURING THE HOURS OF DARKNESS ARE RECOMMENDED TO DISPLAY THE NIGHT SIGNALS CONSISTING OF 3 ALL-ROUND GREEN LIGHTS IN A VERTICAL LINE WITH EFFECT FROM 1ST JULY 2011 AT 010000UTC (0800SGT) AS DETAILED IN MARITIME AND PORT AUTHORITY OF SINGAPORE'S PORT MARINE CIRCULAR, 02 OF 2011 DATED 30 MAY 2011.

ISSUED BY SINGAPORE PORT OPERATIONS CONTROL CENTRE (as at 29th March 2015)

V
**EXTRACT OF ADMIRALTY NOTICES TO MARINERS
 FOR DUAL-BADGED CHARTS**

These notices can also be accessed directly from UKHO Website:

<http://www.ukho.gov.uk/ProductsandServices/MartimeSafety/Pages/NMPublic.aspx>

1124 INDONESIA – Sumatera – Pulau Batam N and E, Pulau Sambu NE, Pulau Lengkana N, and Pulau Bintan NW – Depths. Buoy. Light-beacon. Submarine cable.

Source: Indonesian Chart 42

Chart 4040 [*previous update 634/15*] WGS84 DATUM

Insert depth, **27**, enclosed by 30m contour 1° 11'·59N., 103° 51'·51E.

Chart 4041 [*previous update 630/15*] WGS84 DATUM

Insert depth, **27**, enclosed by 30m contour 1° 11'·59N., 103° 51'·51E.

depth, **19₂**, enclosed by 20m contour (a) 1° 09'·53N., 103° 55'·04E.

depth, **17**, and extend 20m contour N to enclose (b) 1° 09'·56N., 103° 55'·40E.

depth, **18₂** (c) 1° 11'·27N., 103° 56'·39E.

depth, **26**, and extend 30m contour W to enclose (d) 1° 10'·58N., 103° 58'·58E.

Amend depth, **28**, enclosed by 30m contour 1° 12'·56N., 104° 04'·14E.
 light-beacon to, **Fl.G.5s7m6M** 1° 10'·09N., 103° 52'·84E.

Move  **LFl.10s**, from: 1° 09'·94N., 103° 54'·74E.
 to: 1° 09'·58N., 103° 54'·91E.

Delete depth, **20₉**, close E of: (a) above

depth, **21₅**, close N of: (b) above

depth, **19₇**, close W of: (c) above

depth, **31**, close W of: (d) above

Chart 4042 [*previous update 3240/14*] WGS84 DATUM

Insert depth, **28**, enclosed by 30m contour 1° 12'·56N., 104° 04'·14E.

1155 INDONESIA – Sumatera – Pulau Sambu E and P. Anaksambu N – Buoyage.

Source: Indonesian Notices 1/4-6/15

Chart 4041 [*previous update 1124/15*] WGS84 DATUM

Insert  **Fl.Y.5s** 1° 10'·50N., 103° 53'·45E.
 1° 09'·88N., 103° 54'·67E.

1449 SINGAPORE – Pulau Busing N, Pulau Bukom NE and SE and Pulau Sebarok SE and SW – Dredged areas. Berths. Jetties. Depths. Light-beacons. Legend. Beacons. Buoy.

Source: Maritime and Port Authority of Singapore

Chart 4032 [*previous update 634/15*] WGS84 DATUM

Insert the accompanying block, showing new dredged areas, berths and amendments to jetties and depths, centred on: 1° 14'·271N., 103° 45'·025E.

Chart 4035 [*previous update 634/15*] WGS84 DATUM



Insert  **Fl.R.5s8m5M Sebarok** (a) 1° 11'·872N., 103° 48'·433E.

V
**EXTRACT OF ADMIRALTY NOTICES TO MARINERS
 FOR DUAL-BADGED CHARTS**

1449 SINGAPORE – Pulau Busing N, Pulau Bukom NE and SE and Pulau Sebarok SE and SW – Dredged areas. Berths. Jetties. Depths. Light-beacons. Legends. Beacons. Buoy. (continued)

Chart 4035 [*previous update 634/15*] WGS84 DATUM

Amend legend to, **Sebarok Beacon & Shell SBM # 068.4°**, centred on:
 Second Bukom light-beacon to, **Q(6)+LFI.15s5m5M** 1° 11′.048N., 103° 46′.358E.
 1° 14′.172N., 103° 46′.452E.

Replace  (collapsed) with  **FI(2)10s** 1° 13′.390N., 103° 46′.775E.





Delete  *FI.R.5s Sebarok*, close SW of: (a) above

Chart 4036 [*previous update 3910/14*] WGS84 DATUM

Insert  **FI.R.5s8m5M Sebarok** (a) 1° 11′.872N., 103° 48′.433E.

Replace  (collapsed) with  **FI(2)10s** 1° 13′.390N., 103° 46′.775E.

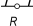



Delete  *FI.R.5s Sebarok*, close SW of: (a) above

Chart 4039 [*previous update 1055/15*] WGS84 DATUM

Insert  **FI.R.5s8m5M Sebarok** (a) 1° 11′.87N., 103° 48′.43E.

Replace  (collapsed) with  **FI(2)10s** 1° 13′.39N., 103° 46′.78E.

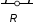
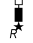


Delete  *FI.R.5s Sebarok*, close SW of: (a) above

Chart 4040 [*previous update 1124/15*] WGS84 DATUM

Insert  **FI.R.5s8m5M Sebarok** (a) 1° 11′.87N., 103° 48′.43E.

Amend legend to, **Sebarok Beacon & Shell SBM # 068.4°**, centred on:
 Second Bukom light-beacon to, **Q(6)+LFI.15s5m5M** 1° 11′.12N., 103° 46′.49E.
 1° 14′.17N., 103° 46′.45E.

Replace  (collapsed) with  **FI(2)10s** 1° 13′.39N., 103° 46′.78E.




Delete  *FI.R.5s Sebarok*, close SE of: (a) above

Chart 4041 [*previous update 1155/15*] WGS84 DATUM

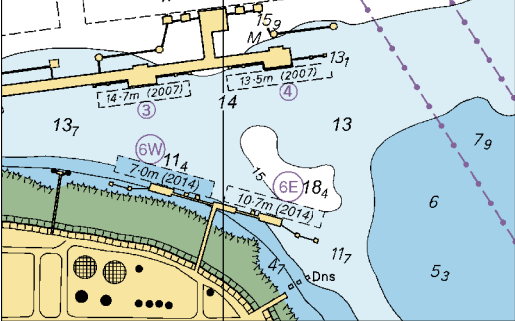
Insert  **FI.R.5s8m5M Sebarok** (a) 1° 11′.87N., 103° 48′.43E.

Amend legend to, **Sebarok Beacon & Shell SBM # 068.4°**, centred on:
 Second Bukom light-beacon to, **Q(6)+LFI.15s5m5M** 1° 11′.38N., 103° 47′.17E.

Delete  *FI.R.5s Sebarok*, close SE of: (a) above

Updated to Admiralty Notices to Mariners Edition No. 13 of 2015 dated 26th March 2015.

To accompany Notice to Mariners 1449/15. Image Size (mm) 42.6 by 68



Block for Chart No 4032

SINGAPORE ENC DISTRIBUTORS

ENC DISTRIBUTOR	ADDRESS	TEL/FAX /EMAIL/WEBSITE
ChartWorld GmbH	Atlantic Haus, Zirkusweg 1 D-20359 Hamburg Germany	Tel: +49 40 853 58 6942 Fax: +49 40 853 58 6949 Email: sales@chartworld.com
ChartWorld Asia Pacific Pte Ltd.	Frontech Centre 07-01, 15 Jalan Kilang Barat, Singapore 159357	Tel: +65 6513 3500 Website: http://www.chartworld.com http://www.ecdis-as-a-service.com
DPM (Singapore) Pte Ltd	2 Boon Leat Terrace, #05-02/03 Harbourside 2, Singapore 119844	Tel: +65 6270 4060 Fax: +65 6276 3858 Email: sales@dpmsingapore.com.sg Website: http://www.dpmsingapore.com.sg
Maritime Information Systems (MARIS)	52, Telok Blangah Road #01-06, Telok Blangah House, Singapore 058809	Tel: +65 6276 1472 Fax: +65 6276 1473 Email: : support@maris.sg Website: http://www.maris.no
Maritime Information Systems AS (MARIS)	Danholmen 25, 3128 Notteroy, Norway	Tel: +47 33 30 42 50 Fax: +47 33 30 42 51 Email: : sales@maris.no Website: http://www.maris.no
Motion Smith	15 Jalan Kilang Barat #08-01/05 Frontech Centre, Singapore 159357	Tel: +65 6220 5098 Fax: +65 6225 4902 Email: sales@motsmith.com Website: http://www.motsmith.com
Transas Marine Pacific Pte Ltd	Cyber Centre 16/18 Jalan Kilang Barat Off Jalan Bukit Merah Singapore 159358	Tel: +65 6271 0200 Fax: +65 6271 7300 Email: navigation.asia@transas.com Website: http://www.transas.com
Japan Hydrographic Association (Electronic Charts Division)	Daiichi Sogo Bldg, 6F 1-6-6, Hanedakuko, Ota-ku Tokyo 144-0041, Japan	Tel: +81 3 5708 7093 Fax: +81 3 5708 7094 Email: shimizu-6kj@jha.jp Website: http://www.jha.or.jp/en/jha/
Jeppesen Norway AS	P.O Box 212 , N-4371 Egersund, Norway	Tel: +47 51 46 4700 Fax: +47 51 46 4701 Email: license.marine@jeppesen.com Website : http://www.jeppesen.com/marine
PRIMAR STAVANGER	Lervigsveien 36, P.O Box 60, N-4001 Stavanger, Norway	Tel: +47 51 93 9500 Fax: +47 51 93 9501 Email: sales@ecc.no Website : http://www.primar.no
The United Kingdom Hydrographic Office	Admiralty Way, Taunton, Somerset, TA1 2DN United Kingdom	Tel: +44 1823 33 7900 Fax: +44 1823 28 4077 Emails: ENCS.SalesReports@ukho.gov.uk Website: http://www.ukho.gov.uk

Chart Distributors for the Maritime and Port Authority of Singapore
Nautical Charts and Publications

Please approach any of the Chart Distributors to purchase the Singapore Nautical Charts and Publications.

CHART DISTRIBUTORS	ADDRESS	TEL/FAX/EMAIL/WEBSITE
Cornes (Singapore) Pte Ltd	10 Anson Road #23-06/6A International Plaza Singapore 079903	Tel: +65 6223 8320 Fax: +65 6223 8321 Email: sales9850@cspl.sg Website: http://www.cornes-charts.com
DPM (Singapore) Pte Ltd	2 Boon Leat Terrace, #05-02/03 Harbourside 2, Singapore 119844	Tel: +65 6270 4060 Fax: +65 6276 3858 Email: sales@dpmsingapore.com.sg Website: http://www.dpmsingapore.com.sg
E.W. Liner Charts & Publications Pte Ltd	102F, Pasir Panjang Road, #08-01, Citilink Warehouse Complex, Singapore 118530	Tel: +65 6323 0773 Fax: +65 6323 0775 Email: ewliner@singnet.com.sg Website: http://www.ewliner.com
Kelvin Hughes (Singapore) Pte Ltd	896 Dunearn Road #03-05 Sime Darby Centre Singapore 589472	Tel: +65 6545 9880 Fax: +65 6545 8892 Email: leslie.khoo@kelvinhughes.com.sg Website: http://www.kelvinhughes.com
Motion Smith	15 Jalan Kilang Barat #08-01/05 Frontech Centre Singapore 159357	Tel: +65 6220 5098 (After office hours:+65 8163 9993) Fax: +65 6225 4902 Email: sales@motsmith.com Website: http://www.motsmith.com

HYDROGRAPHIC NOTE - Instructions

1. Mariners are requested to notify the Chief Hydrographer, Maritime and Port Authority of Singapore, when new or suspected dangers to navigation are discovered, changes are observed in aids to navigation or where corrections to nautical publications may be necessary. Reports, which cannot be confirmed or are lacking in certain details should not be withheld.
2. Any ambiguities of time, positioning and depth should be stressed and any firm expectation of being able to check the information provided on a following voyage should be mentioned.
3. Mariners using satellite position fixing systems, eg. GPS, should provide details of equipment and datum used (where applicable). Where bearings (true or magnetic) are taken visually or by radar to fix a position, it should include more than two objects in order to provide a check on its accuracy. A position may also be defined by bearing and distance from a conspicuous object eg. beacon, lighthouse etc.
4. The note should include a tracing or a digital image of the chart used and the details should be clearly marked.
5. Echo sounders frequently register greater depths than the advertised maximum depth for the equipment, eg. a trace appearing at 50 metres may be in fact be 550 metres or even 1050 metres for equipment whose maximum depth is 500 metres. Erroneous depths caused by 2nd transmission error can usually be recognised by the following:
 - (a) the tracing being weaker than normal for the depth registered,
 - (b) the trace appearing to pass through the transmission line,
 - (c) the feathery nature of the trace.
6. Upon receipt of a hydrographic note, a Notice to Mariners may be issued. The sender's vessel or name is quoted as the source unless the same information is also received in foreign Notices to Mariners.
7. Reports of shoals, uncharted dangers and defects in aids to navigation may also be made to the appropriate Singapore Port Operations Control Centre on VHF Channels 10, 12, 14, 68 or 73.

HYDROGRAPHIC NOTE

To:

Chief Hydrographer
Maritime and Port Authority of Singapore
460 Alexandra Road PSA Building #20-00
Singapore 119963

Tel : (65) 6325 2027
Fax : (65) 6226 1076
Email : hydrographic@mpa.gov.sg

Sender's Contact Details :

Date :

Name of Vessel :

Address of Sender :

Tel : Fax :

Email :

Nature of Observation :

General Location :

Subject :

Position : Lat. Long.

Charts Used :

Date & Time of Observation :

Details :

.....

.....

Attachment :

Equipment Used :

Type of Position Fixing : GPS / DGPS Others :

Type of Echo Sounder :

Name and Signature :

Ship's/Company's Stamp :