



SINGAPOREAN NOTICES TO MARINERS

SECTION	CONTENT	Page
I	Index of Charts & Publications	3
II	New Charts & Publications	11
	Notices to Mariners and Chart Corrections	20
	Temporary and Preliminary Notices	21
III	Navigational Information	25
	Amendments to Publications	26
IV	Reprint of Radio Navigational Warnings	28
V	Extract of Admiralty Notices to Mariners for Dual-Badged Charts	30

The monthly Notices to Mariners contain information required to keep charts and publications published by the Hydrographic Department, Maritime and Port Authority of Singapore up-to-date.

Mariners are requested to notify the Chief Hydrographer, Maritime and Port Authority of Singapore, immediately of the discovery of new or suspected dangers to navigation, observed changes to aids to navigation and ways Singaporean Charts and Publications can be improved. The Hydrographic Note on the back page should be used for this purpose.

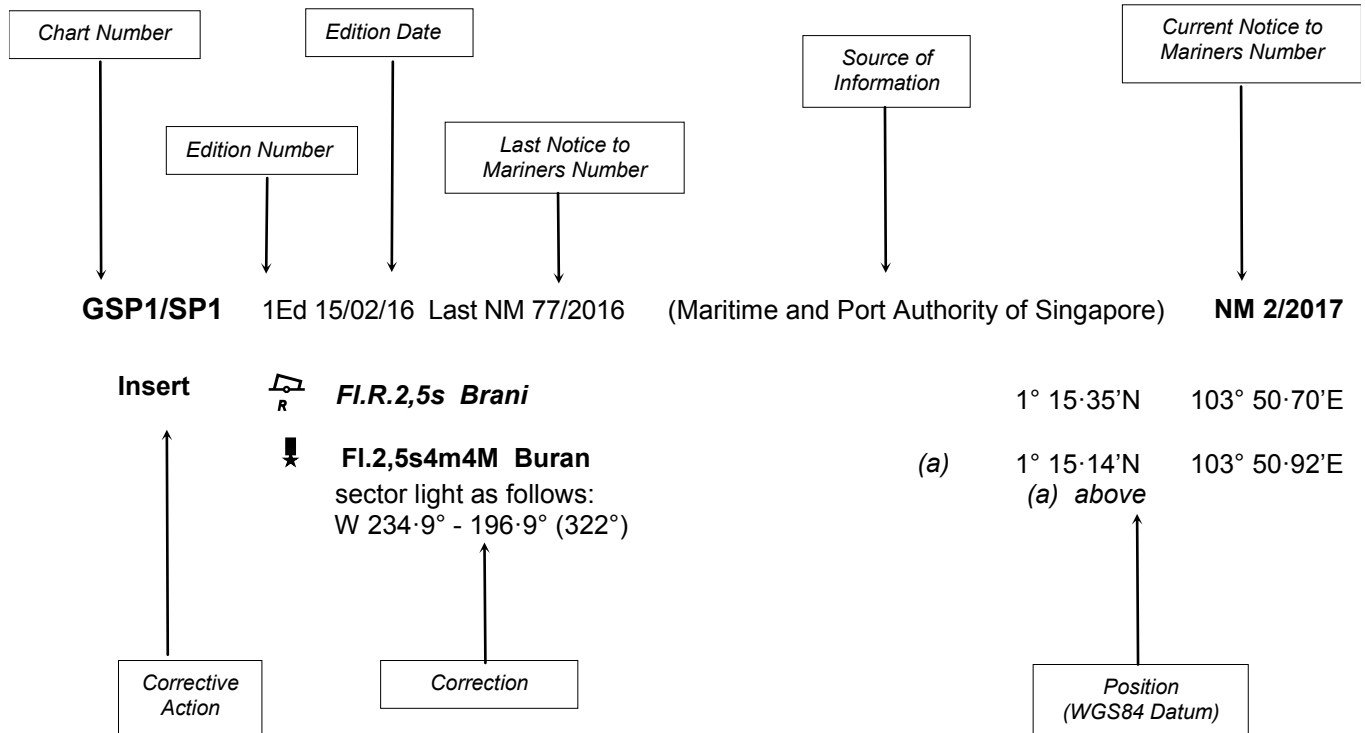
The monthly Singaporean Notices to Mariners can be accessed directly from the MPA website:

<http://www.mpa.gov.sg/web/portal/home/port-of-singapore/circulars-and-notices/singapore-notices-to-mariners-ntm>

Hydrographic Department
Maritime and Port Authority of Singapore
7B Keppel Road
#20-00 Tanjong Pagar Complex
Singapore 089055
Tel : (65) 6325 2027
Fax : (65) 6226 1076
Email : hydrographic@mpa.gov.sg
Website : www.mpa.gov.sg

EXPLANATION OF FORMAT

The elements of a typical chart correction are explained below.



Notes:

- Notice to Mariners number followed by:
T indicates a Temporary Notice (eg. **NM 3T/2017**).
P indicates a Preliminary Notice (eg. **NM 4P/2017**).
- Bearings are true reckoned clockwise from 000° to 359°; those relating to lights are from seaward.
- Heights and elevations are above Mean High Water Springs.

I
INDEX OF CHARTS AND PUBLICATIONS

INDEX OF AFFECTED CHARTS

DESCRIPTION	NOTICE NO.	PAGE NO.
Index of Singaporean Charts	-	3, 4
Index of Dual-Badged Charts	-	5 to 8
Index of Singapore Electronic Navigational Chart	-	9
Index of Malacca and Singapore Straits Electronic Navigational Chart	-	10
New Charts and Publications	-	11 to 19
Singaporean Chart 200	28	20
Singaporean Chart 202	*29	20
Singaporean Chart 503	*29	20
Temporary and Preliminary Notices	*30P, *31P, *32P, *33T	21 to 24
Singapore Port Marine Notices/Circulars	*34	25
Amendments to Publications	*35	26, 27
Reprint of Radio Navigational Warnings	-	28, 29
Extract of Admiralty Notices to Mariners for Dual-Badged Charts	-	30 to 33
Singapore Electronic Navigational Chart Distributors	-	34
Chart Distributors for the Maritime and Port Authority of Singaporean Charts and Publications	-	35

*Source: Maritime and Port Authority of Singapore

I
INDEX OF CHARTS AND PUBLICATIONS

INDEX OF NOTICES

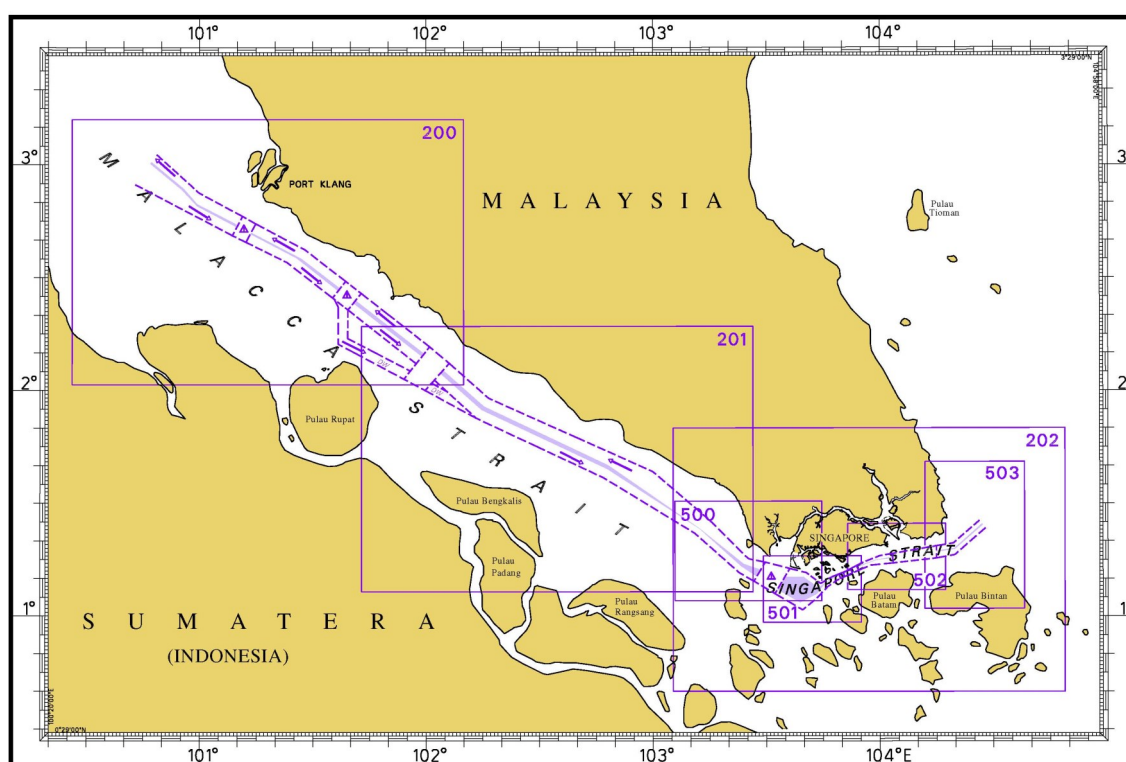
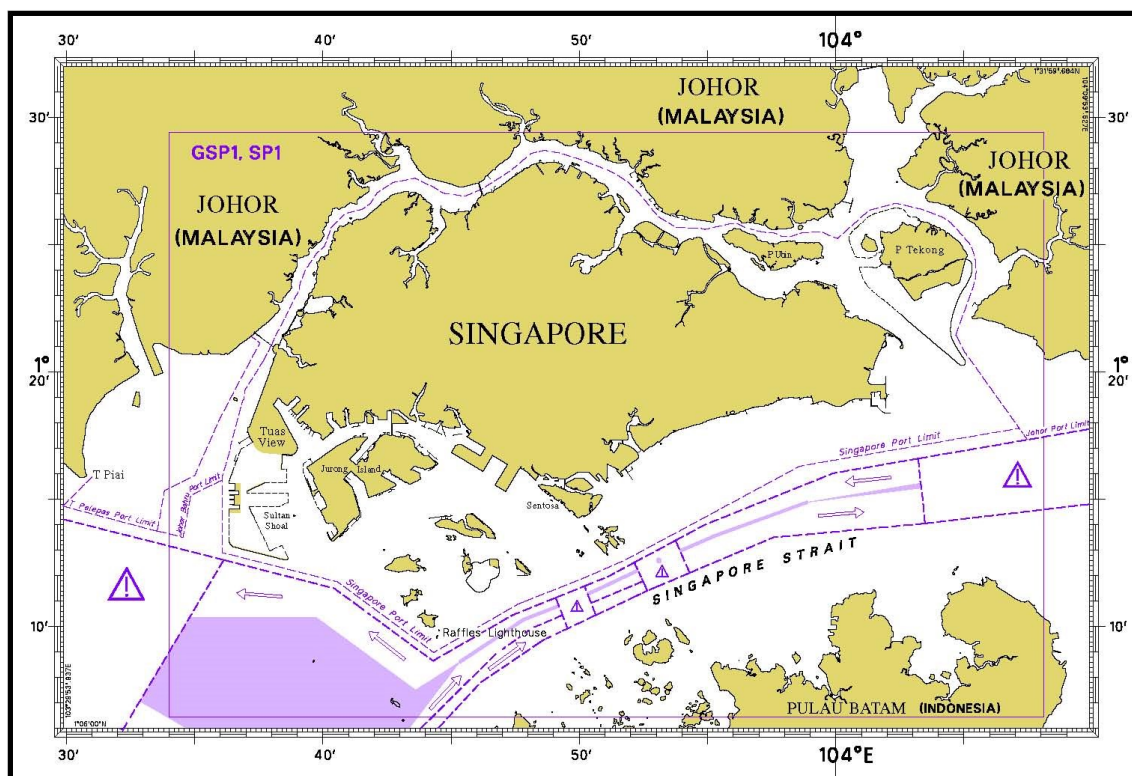
NOTICE NO.	DESCRIPTION	PAGE NO.
-	Index of Singaporean Charts	3, 4
-	Index of Dual-Badged Charts	5 to 8
-	Index of Singapore Electronic Navigational Chart	9
-	Index of Malacca and Singapore Straits Electronic Navigational Chart	10
-	New Charts and Publications	11 to 19
28	Singaporean Chart 200	20
*29	Singaporean Chart 202	20
*29	Singaporean Chart 503	20
*30P, *31P, *32P, *33T	Temporary and Preliminary Notices	21 to 24
*34	Singaporean Port Marine Notices/Circulars	25
*35	Amendment to Publications	26, 27
-	Reprint of Radio Navigational Warnings	28, 29
-	Extract of Admiralty Notices to Mariners for Dual-Badged Charts	30 to 33
-	Singapore Electronic Navigational Chart Distributors	34
-	Chart Distributors for the Maritime and Port Authority of Singaporean Charts and Publications	35

*Source: Maritime and Port Authority of Singapore

I

INDEX OF CHARTS AND PUBLICATIONS

INDEX OF SINGAPOREAN CHARTS



Notes:

Singaporean Charts are available through our Print-On-Demand (POD) Chart Service. Print-On-Demand (POD) Charts are the most up-to-date paper nautical charts printed for navigational use. These nautical charts are produced in accordance with the International Hydrographic Organization (IHO) chart specifications. All Singaporean Charts are continually updated to the latest Notices to Mariners before they are printed and sold to users.

I

INDEX OF CHARTS AND PUBLICATIONS

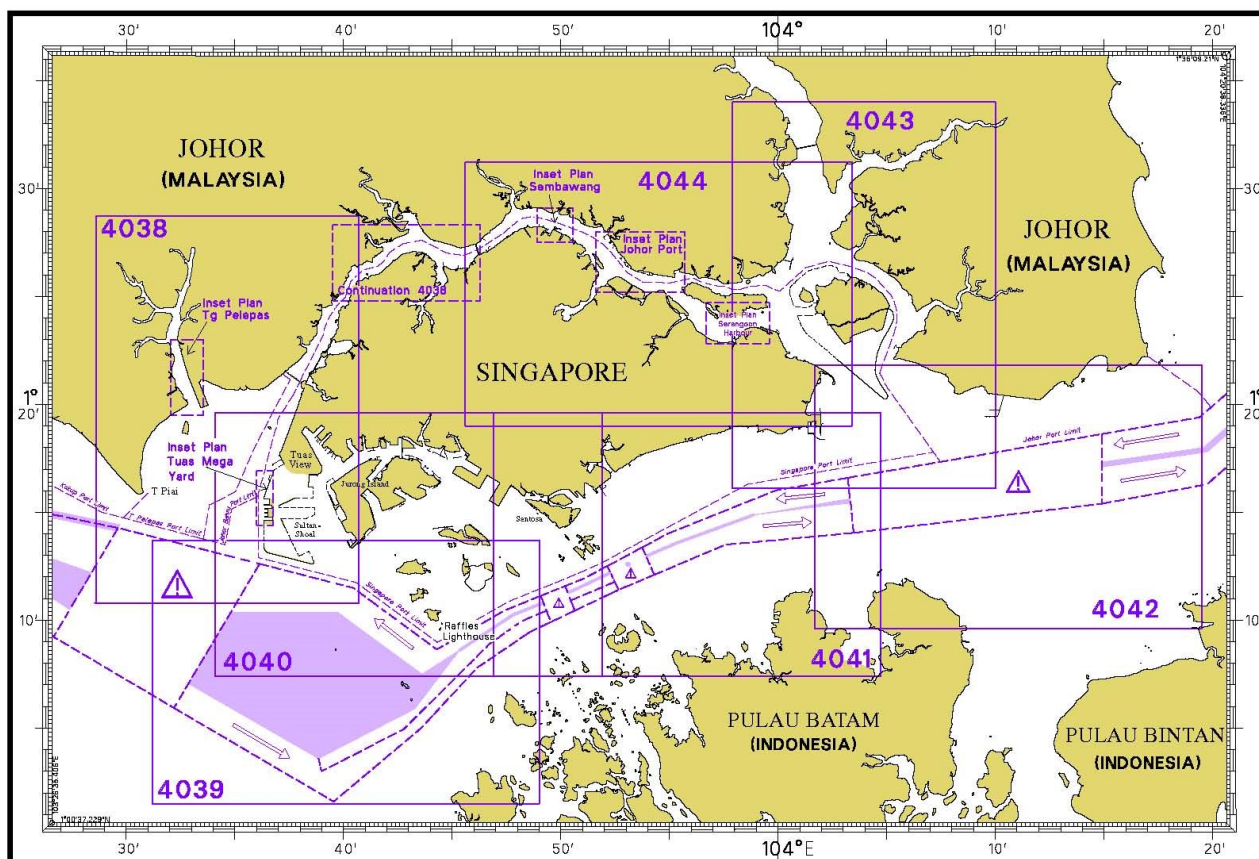
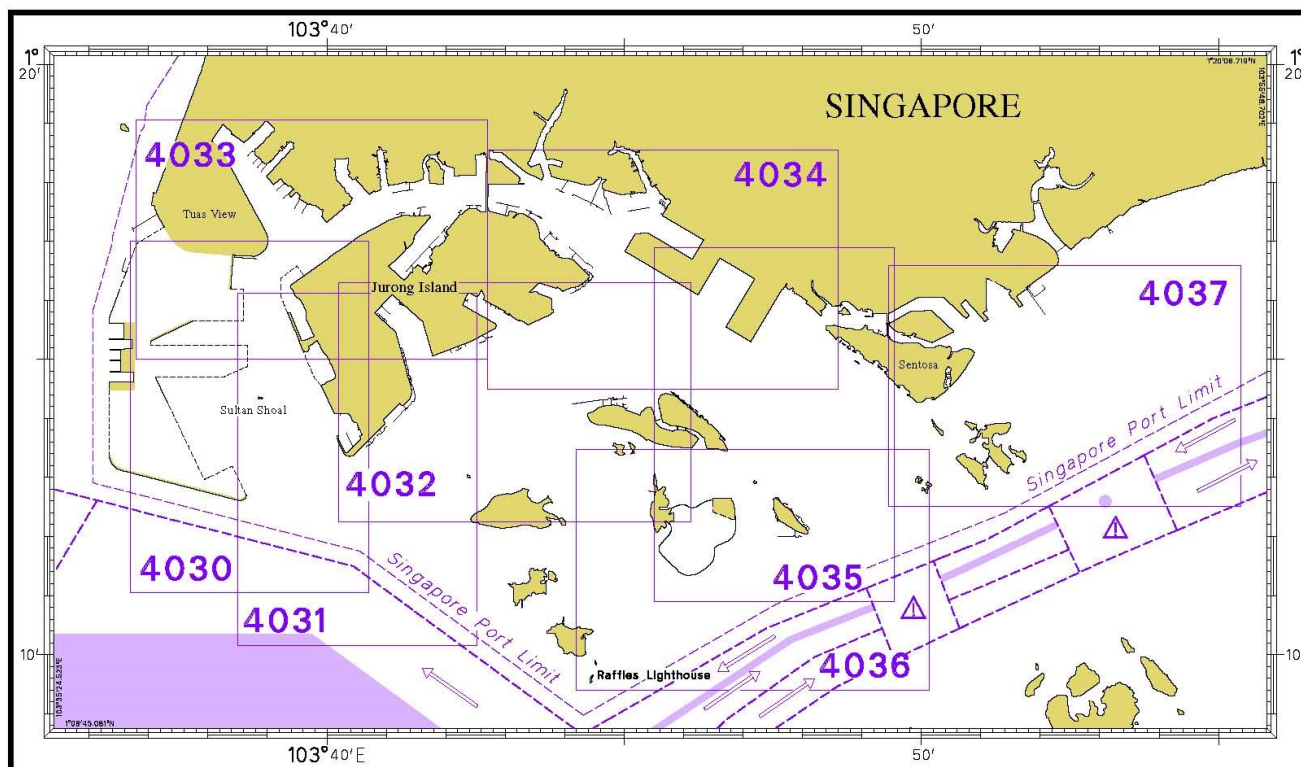
SINGAPOREAN CHARTS

Chart No.	Chart Title	Scale 1:	Date Published of Latest Edition
GSP1	Anchorage and Aids to Navigation (with Area Reference)	65 000	01/03/2017
SP1	Anchorage and Aids to Navigation	65 000	01/03/2017
200	Malacca Strait - Port Klang to Tanjung Keling	200 000	01/09/2015
201	Malacca Strait - Tanjung Keling to Western Entrance of Singapore Strait	200 000	15/08/2014
202	Singapore Strait	200 000	15/09/2016
500	Malacca and Singapore Straits - Pulau Pisang to Raffles Lighthouse	75 000	26/09/2013
501	Singapore Strait - Western Part	50 000	01/09/2015
502	Singapore Strait - Eastern Part	50 000	01/09/2015
503	South China Sea - Eastern Approaches and Entrance to Singapore Strait	75 000	15/08/2014
-	Charts for Small Craft - Singapore Port Waters and Approaches	10 000 to 200 000	January 2016
1	<p>Symbols Abbreviations Terms and S57 Objects used on Singapore Nautical and Electronic Navigational Charts</p> <p>Available for download at MPA website: http://www.mpa.gov.sg/web/portal/home/publications/chart-symbols-and-abbreviations </p>	-	28/07/2011

I

INDEX OF CHARTS AND PUBLICATIONS

DUAL-BADGED CHARTS



I
INDEX OF CHARTS AND PUBLICATIONS

DUAL-BADGED CHARTS

Chart No.	Chart Title	Scale 1:	Date Published of Latest Edition
4030	Port of Singapore West Jurong Anchorages and Temasek Fairway	10 000	02/03/2017
4031	Port of Singapore Western Approaches to Jurong Island	10 000	02/03/2017
4032	Port of Singapore Sinki Fairway	10 000	04/08/2016
4033	Port of Singapore Tuas Bay, West Jurong Channel and Pesek Basin	10 000	17/03/2016
4034	Port of Singapore East Jurong Channel, Pasir Panjang Terminal and West Keppel Fairway	10 000	04/08/2016
4035	Port of Singapore Western Anchorages, Jong Fairway and Cruise Bay	10 000	28/05/2015
4036	Port of Singapore Raffles Lighthouse to The Sisters	10 000	28/05/2015
4037	Port of Singapore Keppel Harbour, Tanjong Pagar Terminal and Approaches	10 000	28/05/2015
4038	Malaysia and Singapore Johor Strait - Western Part	30 000	25/02/2016
4039	Indonesia, Singapore and Malaysia Western Approaches to Main Strait	30 000	24/04/2014
4040	Singapore, Indonesia and Malaysia Tuas View to Pulau Sakijang Bendera (St. John's Island)	30 000	27/08/2015
4041	Singapore and Indonesia Pulau Sebarok to Changi	30 000	27/08/2015

I
INDEX OF CHARTS AND PUBLICATIONS

DUAL-BADGED CHARTS

Chart No.	Chart Title	Scale 1:	Date Published of Latest Edition
4042	Indonesia, Malaysia and Singapore Changi to Pulau Mungging and Tanjung Buntan to Tanjung Tondang	30 000	24/04/2014
4043	Malaysia and Singapore Kuala Johor and Sungai Johor	30 000	16/06/2016
4044	Singapore and Malaysia Johor Strait - Eastern Part	30 000	16/06/2016

SINGAPOREAN PUBLICATIONS

Item	Title	Date Published of Latest Edition
1	Singapore Tide Tables Year 2017	09/09/2016
2	Singapore Port Information 2016/2017	04/01/2016

I

INDEX OF CHARTS AND PUBLICATIONS

DUAL-BADGED PORT APPROACH GUIDES

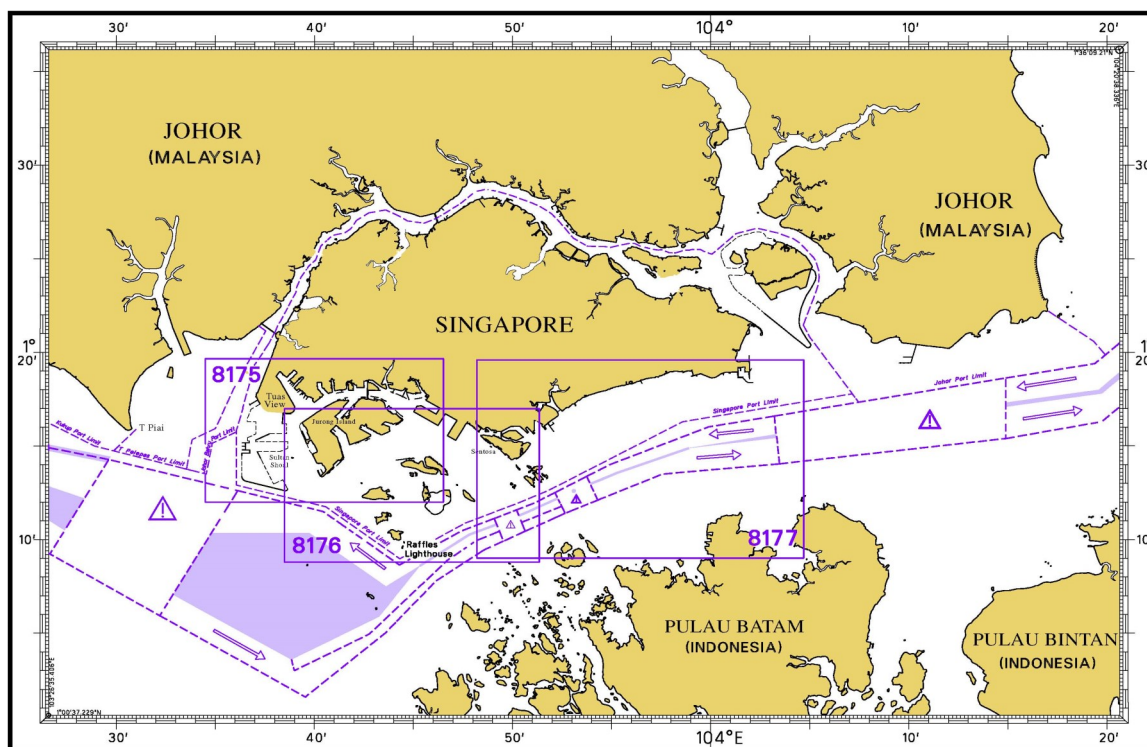
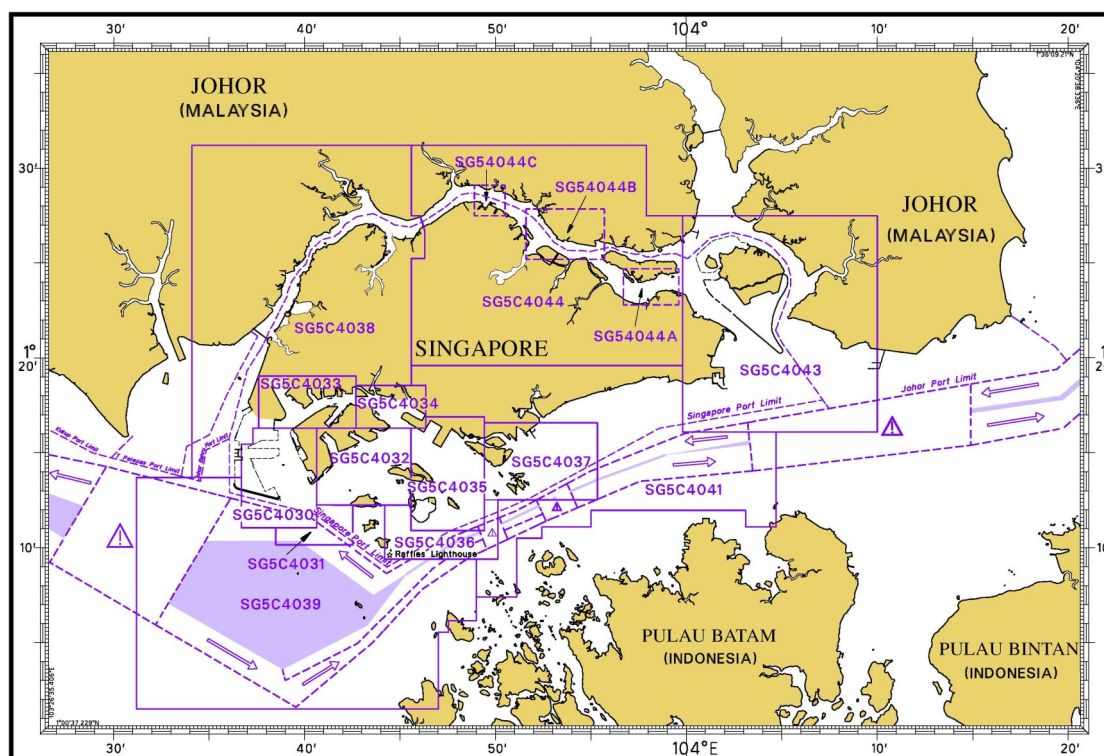


Chart No.	Chart Title	Scale 1:	Date Published of Latest Edition
8175	Port Approach Guide Singapore, Tuas View to Pasir Panjang Terminal including Jurong Channels	21 500	15/09/2016
8176	Port Approach Guide Singapore, Sinki Fairway to Southern Fairway	23 000	15/09/2016
8177	Port Approach Guide Singapore, Southern Fairway to Changi	30 000	15/09/2016

Note : The full range of Admiralty Port Approach guides is available from the Admiralty Chart Agents. To find an Admiralty Chart Agent, please visit : <http://www.admiralty.co.uk/how-to-buy>

I

INDEX OF CHARTS AND PUBLICATIONS



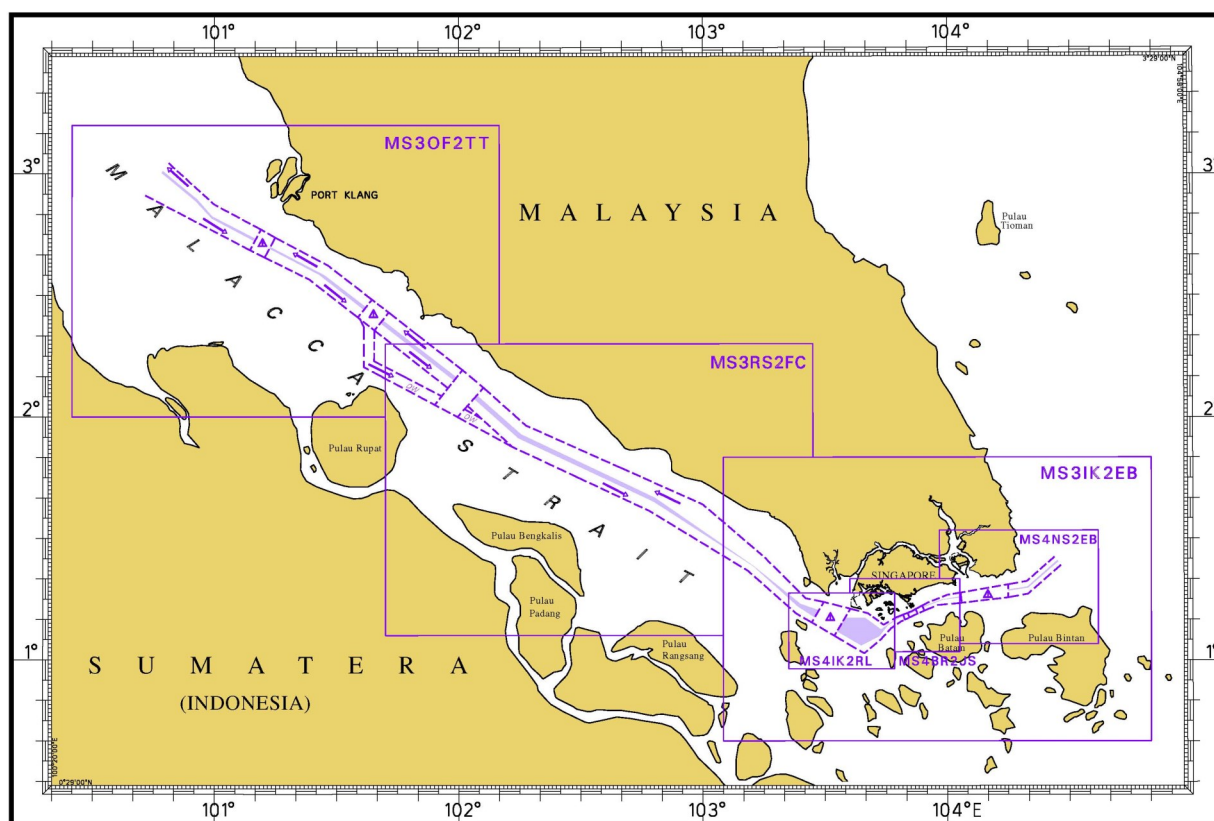
SINGAPORE ELECTRONIC NAVIGATIONAL CHART (ENC)

ENC Name	ENC Coverage	ENC Edition
SG5C4030	West Jurong Anchorages and Temasek Fairway	11th Edition (2/03/2017)
SG5C4031	Western Approaches to Jurong Island	8th Edition (17/03/2016)
SG5C4032	Sinki Fairway	12th Edition (2/03/2017)
SG5C4033	Tuas Bay, West Jurong Channel and Pesek Basin	9th Edition (17/03/2016)
SG5C4034	East Jurong Channel, Pasir Panjang Terminal and West Keppel Fairway	14th Edition (4/08/2016)
SG5C4035	Western Anchorages, Jong Fairway and Cruise Bay	18th Edition (4/08/2016)
SG5C4036	Raffles Lighthouse to The Sisters	9th Edition (28/05/2015)
SG5C4037	Keppel Harbour, Tanjong Pagar Terminal and Approaches	9th Edition (28/05/2015)
SG5C4038	Johor Strait - Western Part	9th Edition (25/02/2016)
SG5C4039	Western Approaches to Main Strait	8th Edition (27/08/2015)
SG5C4041	Pulau Sebarok to Changi	9th Edition (27/08/2015)
SG5C4043	Kuala Johor	12th Edition (16/06/2016)
SG5C4044	Johor Strait - Eastern Part	12th Edition (16/06/2016)
SG54044A	Serangoon Harbour	3rd Edition (16/06/2016)
SG54044B	Pelabuhan Johor (Johor Port)	3rd Edition (16/06/2016)
SG54044C	Sembawang	3rd Edition (16/06/2016)

The latest edition of the Singapore ENC covering Singapore Waters and their approaches can be found in the MPA website:
<http://www.mpa.gov.sg/web/portal/home/port-of-singapore/port-operations/charts-tidal-information-aids-to-navigation-hydrography/nautical-charts/singapore-electronic-navigational-chart-enc>

I

INDEX OF CHARTS AND PUBLICATIONS



MALACCA AND SINGAPORE STRAITS **ELECTRONIC NAVIGATIONAL CHART (MSS-ENC)**

ENC Name	ENC Coverage	ENC Edition
MS3OF2TT	One Fathom Bank to Tanjung Keling	5th Edition (15/11/2016)
MS3RS2FC	Raleigh Shoal to Fair Channel	7th Edition (15/11/2016)
MS3IK2EB	Iyu Kechil to Eastern Bank	7th Edition (15/11/2016)
MS4IK2RL	Iyu Kechil to Raffles Lighthouse	8th Edition (15/11/2016)
MS4BR2JS	Buffalo Rock to Johor Shoal	9th Edition (15/11/2016)
MS4NS2EB	Nongsa to Eastern Bank	8th Edition (15/11/2016)

For further information, please contact:

Japan Hydrographic Association (JHA)

Email: enc-support@jha.jp

Website: http://www.jha.or.jp/en/jha/purchase/distributors_world.html

II NEW CHARTS AND PUBLICATIONS

NEW EDITION SINGAPOREAN CHARTS PUBLISHED ON 1ST MARCH 2017

Chart Number	:	*GSP1
Title	:	Anchorage and Aids to Navigation
Coverage	:	Lat 01° 06-43' N 01° 29-40' N Long 103° 34-00' E 104° 08-10' E
Scale	:	1 : 65 000
Date Published	:	1 st March 2017
Size of Chart	:	973.2 x 651.3 mm
Description	:	This new edition includes new changes to aids to navigation, working areas, submarine cables, depth contours from the latest surveys covering west of Tuas View Reclamation, West Johor Strait, Temasek Fairway, West Jurong Channel, East Jurong Channel, Pasir Panjang, West Keppel Fairway, Western Anchorages, Buran Channel, East Keppel Fairway, south of St John Island, East Johor Strait and around Pulau Tekong.

The existing chart of the same number published on 15th February 2016 has been superseded.

*This chart is provided with a grid reference.

Chart Number	:	SP1
Title	:	Anchorage and Aids to Navigation
Coverage	:	Lat 01° 06-43' N 01° 29-40' N Long 103° 34-00' E 104° 08-10' E
Scale	:	1 : 65 000
Date Published	:	1 st March 2017
Size of Chart	:	973.2 x 651.3 mm
Description	:	This new edition includes new changes to aids to navigation, working areas, submarine cables, depth contours from the latest surveys covering west of Tuas View Reclamation, West Johor Strait, Temasek Fairway, West Jurong Channel, East Jurong Channel, Pasir Panjang, West Keppel Fairway, Western Anchorages, Buran Channel, East Keppel Fairway, south of St John Island, East Johor Strait and around Pulau Tekong.

The existing chart of the same number published on 15th February 2016 has been superseded.

II NEW CHARTS AND PUBLICATIONS

NEW EDITION DUAL BADGED CHARTS PUBLISHED ON 2ND MARCH 2017

Chart Number	:	4030
Title	:	Port of Singapore West Jurong Anchorages and Temasek Fairway
Coverage	:	Lat 01° 11·05' N 01° 17·00' N Long 103° 36·70' E 103° 40·70' E
Scale	:	1 : 10 000
Date Published	:	2 nd March 2017
Size of Chart	:	742.0 x 1096.5 mm
Description	:	This new edition includes updates covering Temasek Fairway, West Jurong Channel, Jurong Anchorages, west of Jurong Island and Sudong Anchorages.
		The existing chart of the same number published on 17 th March 2016 has been superseded.

Chart Number	:	4031
Title	:	Port of Singapore Western Approaches to Jurong Island
Coverage	:	Lat 01° 10·15' N 01° 16·12' N Long 103° 38·50' E 103° 42·53' E
Scale	:	1 : 10 000
Date Published	:	2 nd March 2017
Size of Chart	:	747.5 x 1100.2 mm
Description	:	This new edition includes updates covering Temasek Fairway, west of Jurong Island, Banyan Basin and Sudong Anchorages.
		The existing chart of the same number published on 17 th March 2016 has been superseded.

II NEW CHARTS AND PUBLICATIONS

NEW EDITION DUAL BADGED CHARTS TO BE PUBLISHED ON 6TH APRIL 2017

Chart Number	:	4035
Title	:	Port of Singapore Western Anchorages, Jong Fairway and Cruise Bay
Coverage	:	Lat 01° 10-90' N 01° 16-90' N Long 103° 45-50' E 103° 49-54' E
Scale	:	1 : 10 000
Date Published	:	6 th April 2017
Size of Chart	:	749.4 x 1105.7 mm
Description	:	This new edition includes updates covering Pasir Panjang Terminal Phase 3 and 4, East Jurong Channel, Western Anchorages, around Pulau Bukom, west of Pulau Sebarok, Shell SBM area, east of Semakau Dumping Ground, Jong Fairway, west of Sentosa and the Main Strait.
		The existing chart of the same number published on 28 th May 2015 will be superseded.

Chart Number	:	4036
Title	:	Port of Singapore Raffles Lighthouse to The Sisters
Coverage	:	Lat 01° 09-40' N 01° 13-47' N Long 103° 44-20' E 103° 50-13' E
Scale	:	1 : 10 000
Date Published	:	6 th April 2017
Size of Chart	:	1100.0 x 750.1 mm
Description	:	This new edition includes updates covering Jong Fairway, west of Pulau Sebarok, Shell SBM area, east of Semakau Dumping Ground, Raffles Anchorages, Western Quarantine and Immigration Anchorage and the Main Strait.
		The existing chart of the same number published on 28 th May 2015 will be superseded.

II NEW CHARTS AND PUBLICATIONS

NEW EDITION DUAL BADGED CHARTS TO BE PUBLISHED ON 6TH APRIL 2017

Chart Number	:	4037
Title	:	Port of Singapore Keppel Harbour, Tanjong Pagar Terminal and Approaches
Coverage	:	Lat 01° 12·52' N 01° 16·59' N Long 103° 49·40' E 103° 55·34' E
Scale	:	1 : 10 000
Date Published	:	6 th April 2017
Size of Chart	:	1101.8 x 750.1 mm
Description	:	This new edition includes updates covering west of Sentosa, Buran Channel, Western Quarantine and Immigration Anchorage, East Keppel Fairway, Marina South Pier, approaches to East Keppel Fairway, Eastern Corridor and Eastern Fairway.

The existing chart of the same number published on 28th May 2015 will be superseded.

II NEW CHARTS AND PUBLICATIONS

NEW EDITION DUAL BADGED CHARTS TO BE PUBLISHED ON 4TH MAY 2017

Chart Number	:	4039
Title	:	Indonesia, Singapore and Malaysia Western Approaches to Main Strait
Coverage	:	Lat 01° 01·50' N 01° 13·70' N Long 103° 31·20' E 103° 49·00' E
Scale	:	1 : 30 000
Date Published	:	4 th May 2017
Size of Chart	:	1100.7 x 749.5 mm
Description	:	This new edition includes updates covering west of Tuas View Extension, Temasek Fairway, Sinki Fairway, Sudong Anchorages and Raffles Anchorages, Jong Fairway, Shell SBM area, Main Strait and Buffalo Rock.

The existing chart of the same number published on 24th April 2014 will be superseded.

Chart Number	:	4040
Title	:	Singapore, Indonesia and Malaysia Tuas View to Pulau Sakijang Bendera (St. John's Island)
Coverage	:	Lat 01° 07·40' N 01° 19·60' N Long 103° 34·10' E 103° 51·90' E
Scale	:	1 : 30 000
Date Published	:	4 th May 2017
Size of Chart	:	1100.6 x 749.5 mm
Description	:	This new edition includes updates covering west of Tuas Reclamation, Temasek Fairway, West Jurong Channel, Sudong Anchorages, Sinki Fairway, Raffles Anchorages, East Jurong Channel, Pasir Panjang Terminal, West Keppel Fairway, Western Anchorages, Jong Fairway, Shell SBM area, Southern Fairway, Buran Channel, East Keppel Fairway, south of Pulau Sebarok and Buffalo Rock.

The existing chart of the same number published on 27th August 2015 will be superseded.

II NEW CHARTS AND PUBLICATIONS

NEW EDITION DUAL BADGED CHARTS TO BE PUBLISHED ON 4TH MAY 2017

Chart Number	:	4041
Title	:	Singapore and Indonesia Pulau Sebarok to Changi
Coverage	:	Lat 01° 07' 40' N 01° 19' 60' N Long 103° 46' 90' E 104° 04' 70' E
Scale	:	1 : 30 000
Date Published	:	4 th May 2017
Size of Chart	:	1100.6 x 749.5 mm
Description	:	This new edition includes updates covering Pasir Panjang Terminal, West Keppel Fairway, Western Anchorages, Jong Fairway, Southern Fairway, Shell SBM, Buran Channel, East Keppel Fairway, Eastern Anchorages, Eastern Corridor, Eastern Fairway, Main Strait, Buffalo Rock, Batu Berhanti, south and east of Johor Shoal.

The existing chart of the same number published on 27th August 2015 will be superseded.

II NEW CHARTS AND PUBLICATIONS

NEW EDITION SINGAPORE ENC RELEASED ON 2ND MARCH 2017

ENC Name	:	SG5C4030
Title	:	West Jurong Anchorages and Temasek Fairway
Coverage	:	Lat 01° 11'050' N 01° 16'300' N Long 103° 36'700' E 103° 40'640' E
Compilation Scale	:	1 : 8 000
Date Released	:	2 nd March 2017
Description	:	This new edition includes updates covering Temasek Fairway, West Jurong Channel, Jurong Anchorages, west of Jurong Island and Sudong Anchorages.
		The existing cell of the same name released on 17 th March 2016 has been superseded.

ENC Name	:	SG5C4032
Title	:	Sinki Fairway
Coverage	:	Lat 01° 12'250' N 01° 16'300' N Long 103° 40'640' E 103° 45'580' E
Compilation Scale	:	1 : 8 000
Date Released	:	2 nd March 2017
Description	:	This new edition includes updates covering Sinki Fairway and Banyan Basin.
		The existing cell of the same name released on 4 th August 2016 has been superseded.

II NEW CHARTS AND PUBLICATIONS

NEW EDITION SINGAPORE ENC TO BE RELEASED ON 6TH APRIL 2017

ENC Name	:	SG5C4035
Title	:	West Jurong Anchorages, Jong Fairway and Cruise Bay
Coverage	:	Lat 01° 10-900' N 01° 16-900' N Long 103° 45-580' E 103° 49-425' E
Compilation Scale	:	1 : 8 000
Date Released	:	6 th April 2017
Description	:	This new edition includes updates covering Pasir Panjang Terminal Phase 3 and 4, East Jurong Channel, Western Anchorage, around Pulau Bukom, west of Pulau Sebarok, Shell SBM area, east of Semakau Dumping Ground, Jong Fairway, west of Sentosa and the Main Strait.

The existing cell of the same name released on 4th August 2016 will be superseded.

ENC Name	:	SG5C4036
Title	:	Raffles Lighthouse to The Sisters
Coverage	:	Lat 01° 09-400' N 01° 12-520' N Long 103° 44-200' E 103° 50-130' E
Compilation Scale	:	1 : 8 000
Date Released	:	6 th April 2017
Description	:	This new edition includes updates covering Raffles Anchorages and the Main Strait.

The existing cell of the same name released on 28th May 2015 will be superseded.

ENC Name	:	SG5C4037
Title	:	Keppel Harbour, Tanjong Pagar Terminal and Approaches
Coverage	:	Lat 01° 12-520' N 01° 16-590' N
Compilation Scale	:	1 : 8 000
Date Released	:	6 th April 2017
Description	:	This new edition includes updates covering east of Sentosa, Buran Channel, Western Quarantine and Immigration Anchorage, East Keppel Fairway, Marina South Pier, approaches to East Keppel Fairway, Eastern Corridor and Eastern Fairway.

The existing cell of the same name released on 28th May

II NEW CHARTS AND PUBLICATIONS

NEW EDITION SINGAPORE ENC TO BE RELEASED ON 4TH MAY 2017

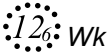
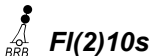

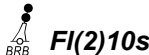
ENC Name	:	SG5C4038
Title	:	Johor Strait - Western Part
Coverage	:	Lat 01° 13·700' N 01° 31·200' N Long 103° 34·100' E 103° 46·300' E
Compilation Scale	:	1 : 22 000
Date Released	:	4 th May 2017
Description	:	This new edition includes updates covering west of Tuas View and Tuas Megayard. The existing cell of the same name released on 25 th February 2016 will be superseded.

ENC Name	:	SG5C4039
Title	:	Western Approaches to Main Strait
Coverage	:	Lat 01° 01·500' N 01° 13·700' N Long 103° 31·200' E 103° 49·000' E
Compilation Scale	:	1 : 22 000
Date Released	:	4 th May 2017
Description	:	This new edition includes updates covering Sudong Bunkering B Anchorage, Nipa Island and Karang Banteng. The existing cell of the same name released on 27 th August 2015 will be superseded.

ENC Name	:	SG5C4041
Title	:	Pulau Sebarok to Changi
Coverage	:	Lat 01° 07·400' N 01° 19·600' N Long 103° 45·600' E 104° 04·700' E
Compilation Scale	:	1 : 22 000
Date Released	:	4 th May 2017
Description	:	This new edition includes updates covering Southern Fairway, Eastern Anchorages, Eastern Fairway, Main Strait, Buffalo Rock and Batu Berhanti. The existing cell of the same name released on 27 th August 2015 will be superseded.

II

NOTICES TO MARINERS AND CHART CORRECTIONS

200	4 Ed 1/09/15 Last NM 12/2017 (Admiralty Notice No. 11/1217/17)		NM 28/2017
Insert	depth, I_6 , enclosed by 2m contour	3° 07·87'N	101° 05·24'E
	depth, 0_5 , enclosed by 2m contour	3° 07·40'N	101° 06·35'E
	depth, 3_4 , enclosed by 5m contour	3° 05·89'N	101° 06·74'E
	depth, 10_9 (a)	3° 02·89'N	101° 01·44'E
	depth, 10_l (b)	3° 00·05'N	101° 01·04'E
Delete	depth, 11_8 , close NE of :	(a) above	
	depth, 11_8 , close NW of :	(b) above	
	depth, 11_4 , close SE of :	(b) above	
<hr/>			
202	8 Ed 15/09/16 Last NM 19/2017 (Maritime and Port Authority of Singapore)		NM 29/2017
Insert	 12_{δ} Wk	1° 25·92'N	104° 27·39'E
	 $FI(2)10s$	1° 26·22'N	104° 27·59'E
<hr/>			
503	7 Ed 1/09/15 Last NM 18/2017 (Maritime and Port Authority of Singapore)		NM 29/2017
Insert	 12_{δ} Wk	1° 25·92'N	104° 27·39'E
	 $FI(2)10s$	1° 26·22'N	104° 27·59'E
<hr/>			

II

TEMPORARY AND PRELIMINARY NOTICES

*(NM 30P/2017) **TATA GLOBAL NETWORK INTRA ASIA CABLE SYSTEM (TGN-IA) SEGMENT 1
- CABLE REPAIR OPERATIONS**

- Description** : Submarine cable repair operations for the TGN-IA shall be executed in the approaches to the Straits of Malacca and Singapore Routeing System at Horsburgh Lighthouse Area (STRAITREP Sector 9).
- Work Vessel and Call Sign** : **CS LODBROG (FNPW)**
- Planned dates of Operation** : With effect from 29th March 2017 until 3rd April 2017. The operations are conducted on a 24 hour basis, including Sundays and Public Holiday.

1. **Working Area**

The designated working area is:

Position	Co-ordinates (WGS84)	
	Latitude (N)	Longitude (E)
A	01°24.192'	104°28.594'
B	01°25.564'	104°30.731'
C	01°25.082'	104°31.029'
D	01°23.711'	104°28.892'

2. **Charts Affected:** Singaporean 202 and 503
3. **Caution:** Mariners are advised to:
- a) navigate with caution.
 - b) keep clear and give a wide berth when approaching the cable restoration vessel.
4. Navigational warning broadcast will be promulgated by Singapore VTIS on VHF CH 10 and NAVTEX. Mariners are to maintain a listening watch.

Source : Monson Agencies Pte Ltd

II

TEMPORARY AND PRELIMINARY NOTICES

***(NM 31P/2017) MORATELINDO CABLE SYSTEM (MIC-1) - CABLE REPAIR OPERATIONS**

Description : Submarine cable repair operations for the MIC-1 shall be executed north of and within the Precautionary Area in the Singapore Strait Routeing System off Tanjung Setapa/Pulau Bintan (STRAITREP Sector 9).

Work Vessel and Call Sign : **CB NETWORKER (HP9631)** and **MICLYN ENDURANCE (9WNF7)**

Planned dates of Operation : With effect from 6th April 2017 to 11th April 2017. The operations are conducted on a 24 hour basis, including Sundays and Public Holiday.

1. **Working Area**

The designated working areas are:

Working Area 1

Position	Co-ordinates (WGS84)		North of Precautionary Area
	Latitude (N)	Longitude (E)	
1	01°17-894'	104°06-722'	
2	01°17-553'	104°06-941'	
3	01°17-433'	104°06-527'	
4	01°17-783'	104°06-331'	
5	01°17-686'	104°06-611'	

Working Area 2

Position	Co-ordinates (WGS84)		Within Precautionary Area
	Latitude (N)	Longitude (E)	
1	01°16-837'	104°07-970'	
2	01°16-580'	104°08-284'	
3	01°16-356'	104°07-949'	
4	01°16-620'	104°07-643'	
5	01°16-602'	104°07-964'	

2. **Charts Affected:** Singaporean GSP1, SP1, 202, 502, Dual Badged BA4042 and BA4043.

3. **Caution:** Mariners are advised to:

a) navigate with caution.

b) keep clear and give a wide berth when approaching the cable restoration vessel.

4. Navigational warning broadcast will be promulgated by Singapore VTIS on VHF CH 10, 14 and NAVTEX. Mariners are to maintain a listening watch.

Source : ViewQuest Pte Ltd

II

TEMPORARY AND PRELIMINARY NOTICES

*(NM 32P/2017)

TATA INDICOM INDIA-SINGAPORE CABLE SYSTEM (TIISCS) SEGMENT 1 - CABLE REPAIR OPERATIONS

- Description** : Submarine cable repair operations for the TIISCS cable shall be executed south of the east-bound lane of the Routeing System in the Singapore Strait (Main Strait). (STRAITREP Sector 7).
- Work Vessel and Call Sign** : **CB NUSANTARA 1 (YBLJ2) or Substitute**
- Planned dates of Operation** : With effect from 12th April 2017 until 12th May 2017. The operations are conducted on a 24 hour basis, including Sundays and Public Holiday.

1. **Working Area**

The designated working area is:

Position	Co-ordinates (WGS84)	
	Latitude (N)	Longitude (E)
A	01°06·815'	103°31·578'
B	01°03·850'	103°36·402'
C	01°02·892'	103°35·797'
D	01°05·810'	103°30·971'

2. **Charts Affected:** Singaporean 202, 500, 501 and Dual Badged BA4039.
3. **Caution:** Mariners are advised to:
- a) navigate with caution.
 - b) keep clear and give a wide berth
4. Navigational warning broadcast will be promulgated by Singapore VTIS on VHF CH 73 and NAVTEX. Mariners are to maintain a listening watch.

Source : Monson Agencies Pte Ltd

II

TEMPORARY AND PRELIMINARY NOTICES

*(NM 33T/2017)

REPAIRS AND MAINTENANCE OF OUTER SHOAL BEACON

- Description** :
1. Outer Shoal Beacon has been temporarily removed for repair and maintenance. It has been replaced by a green conical buoy with light characteristics Fl.G.5s at position 1°15·050'N 103°51·770'E.
 2. Outer Shoal Beacon will be reinstalled at the original location after completion of repair and maintenance.

Charts Affected : Singaporean GSP1/SP1, 501, 502, Dual Badged BA4037, BA4040 and BA4041

Caution : Mariners are advised to navigate with caution

Source : Maritime and Port Authority of Singapore

III NAVIGATIONAL INFORMATION

*(NM 34/2017)

SINGAPORE PORT MARINE NOTICES/CIRCULARS

The Port Marine Notices/Circulars shortlisted below would be of particular interest to Mariners. Details and complete list of Port Marine Notices/Circulars are available at this link:

<http://www.mpa.gov.sg/web/portal/home/port-of-singapore/circulars-and-notice>

PMN No.**Subject**

32/2017	Deployment of an instrumented research buoy off Lazarus Island
40/2017	Installation of wave screens off Republic of Singapore Yacht Club (RSYC)
41/2017	Construction of temporary jetty and RoRo ramp in Tuas View basin at Tuas Staging Ground
43/2017	Dredging works in Temasek Fairway

*Source: Maritime and Port Authority of Singapore

III AMENDMENTS TO PUBLICATIONS

*(NM 35/2017) UPDATING OF PUBLICATION “SINGAPORE PORT INFORMATION 2016/2017”

LEAST DEPTHS OF ANCHORAGES

1. Page 104

A EASTERN SECTOR

Amend the following:

No.	Anchorage	Depth (m)	Latitude (N) Longitude (E)
11	Eastern Bunkering C (AEBC)	22.9	1° 16·595' 103° 55·590'
		(High spot of 21.4m exists approximately 307° x 386m from forward buoy)	1°16·628' 103°55·305'

2. Page 105

B WESTERN SECTOR

Amend the following:

No.	Anchorage	Depth (m)	Latitude (N) Longitude (E)
22	Raffles Reserved (ARAFR)	11.6	1° 11·623' 103° 45·277'
23	Raffles Petroleum (ARP)	11.1	1° 12·145' 103° 44·502'

CONTROLLING DEPTHS OF NAVIGATIONAL CHANNELS AND FAIRWAYS

3. Page 109

Amend the following:

LOCATIONS	Depths (m)	REMARKS
Cruise Bay (Tg Berlayer to Berth CC01)	10.6	
East Keppel Fairway (Western Half)	14.3	
Eastern Corridor	21.1	
Eastern Fairway	12.7	

III AMENDMENTS TO PUBLICATIONS

WHARVES AND BERTHS

4. Page 168 and 169

JURONG TERMINAL (JURONG PORT PTE LTD) (1°18·3'N, 103°43·1'E)

Amend the following:

Berth	Length of Berth Box	Max LOA	Depth Alongside (Year Surveyed)	Controlling Depth in Approaches
J4	184m	-	12.3m (2016)	14.0m
J4A	120m	-	13.3m (2016)	14.0m
J5	183m	-	11.7m (2007)	14.0m
J6	183m	-	10.7m (2016)	14.0m
J7	183m	-	9.5m (2016)	14.0m
J8	196m	-	10.1m (2016)	14.0m
J9	196m	-	10.0m (2016)	14.0m
J10	196m	-	13.8m (2016)	14.0m
J11	197m	-	13.8m (2016)	14.0m
J12B	190m	-	10.9m (2017)	12.0m
J13	150m	130m	6.3 (2014)	12.1m
J22	189m	-	12.3m (2016)	14.0m
J23	215m	-	12.4m (2016)	14.0m
J24	202m	-	13.6m (2002)	14.0m
J25	312m	-	12.4m (2016)	14.0m

*Source: Maritime and Port Authority of Singapore

IV

REPRINT OF RADIO NAVIGATIONAL WARNINGS

The following Radio Navigational Warnings have been shortlisted, as they would be of particular interest to mariners.

TT175

VESSELS IN EAST JOHOR STRAIT ARE ADVISED TO NAVIGATE WITH PARTICULAR ALERTNESS AND CAUTION WHEN NEAR PROJECT AREAS OFF PULAU TEKONG, CHANGI AND MALANG PAPAN AS SHALLOW WATER AREA EXIST. VESSELS ARE REMINDED TO PROCEED AT SAFE SPEED AND MAINTAIN A PROPER LOOKOUT, PARTICULARLY FOR TUGS AND BARGES NAVIGATING NEAR THE PROJECT AREAS AND PASSENGER FERRIES CROSSING BETWEEN CHANGI AND PULAU TEKONG AND VICINITY OF PASIR GUDANG.

TT273

ALL VESSELS ARE ADVISED TO NAVIGATE WITH CAUTION, COMPLY WITH THE INTERNATIONAL COLLISION REGULATIONS, MAINTAIN VHF RADIO WATCH AND LISTEN TO TRAFFIC INFORMATION WHEN NAVIGATING IN THE SINGAPORE STRAIT AND PORT WATERS. MARINERS ARE ALSO ADVISED TO KEEP A GOOD LOOKOUT OF FREQUENT FERRIES CROSSING THE SINGAPORE STRAIT.

TT363

MARINERS ARE REMINDED NOT TO ANCHOR IN ALL AREAS IN THE TSS OF THE STRAITS OF MALACCA AND SINGAPORE AS WELL AS BETWEEN THE LANDWARD LIMITS OF THE TSS AND APPROACHES TO THE PORTS. VESSELS ENTERING ANY PORT IN ANY LITTORAL STATES ARE TO ANCHOR IN THE ANCHORAGES DESIGNATED BY THE RESPECTIVE LITTORAL STATES ONLY.

TT389

NIPAH NORTH CARDINAL BEACON AT LAT 1°10'40"N LONG 103°39'74"E IS REPORTED UNLIT.

TT390

BATU BERHANTI ISOLATED DANGER BUOY IN POSITION LAT 1°11'790"N LONG 103°52'474"E IS REPORTED UNLIT. ALL VESSELS PASSING THE VICINITY ARE ADVISED TO NAVIGATE WITH EXTRA CAUTION.

TT392 (AMENDED 21 MAR 2017 0330Z)

A TUG BOAT 'HARITA BERLIAN 18' SANK AT POSITION 1°17'00"N 104°10'00"E. MARINERS ARE ADVISED TO NAVIGATE WITH CAUTION WHEN IN THE VICINITY.

TT394

CS ASEAN EXPLORER WILL BE CARRYING OUT SUBMARINE CABLE REPAIR OPERATIONS AT TSS WEST BOUND LANE SOUTH OF TG.AYAM AT THE FOLLOWING COORDINATES:

A	1°18'095"N	104°14'123"E
B	1°18'115"N	104°13'814"E
C	1°18'546"N	104°13'908"E
D	1°18'115"N	104°13'814"E

VESSELS ARE ADVISED TO KEEP A LOOKOUT, NAVIGATE WITH CAUTION AND GIVE A WIDE BERTH WHEN PASSING THE OPERATIONS AREA.

TT397

A TEMPORARY WORKING AREA HAS BEEN ESTABLISHED FOR SURVEY AND OIL REMOVAL OPERATIONS ON THE SUNKEN VESSEL THORCO CLOUD IN THE EAST BOUND LANE OF THE SINGAPORE STRAIT, OPERATION AREA IS ABOUT 1.7NM NE OF BATU BERHANTI BEACON AND INVOLVED SURVEY VESSEL SURF ALLAMANDA (YBKL2).

THE OPERATIONS ARE SCHEDULED FROM 8 MARCH TO 15 MAY 2017, 0700H TO 1915H DAILY. THE 400M WIDE WORKING AREA WILL BE MARKED BY THE FOLLOWING BUOYS (WGS84)

LAT (N)	LONG (E)	CARDINAL MARK	LIGHT (WHITE) RANGE (NM)
1°12'258'	103°53'919'	TC1 WEST	VQ(9)10S.6M
1°12'488'	103°54'100'	TC2 NORTH	VQ.6M
1°13'051'	103°55'040'	TC3 NORTH	VQ.6M
1°12'270'	103°54'156'	TC4 SOUTH	VQ(6)+FL10S.6M
1°12'801'	103°55'040'	TC5 SOUTH	VQ(6)+FL10S.6M

CHARTS AFFECTED: SP1/GSP1, 202, 502, BA4037 AND BA4041, MARINERS ARE ADVISED TO NAVIGATE WITH CAUTION AND KEEP CLEAR OF WORKING AREA.

IV

REPRINT OF RADIO NAVIGATIONAL WARNINGS

TT398 (AMENDED 151545Z MAR 17)

A VESSEL HAD SUNK AT LOCATION 1°25.915'N 104°27.389'E IN THE APPROACHES TO THE WEST BOUND LANE IN THE MIDDLE CHANNEL, NORTH EAST OFF HORSBURGH LIGHTHOUSE. THE LEAST DEPTH AT THE LOCATION IS 12.6M. AN ISOLATED DANGER BUOY WITH LIGHT CHARACTERISTICS FL(2)10S HAS BEEN INSTALLED AT POSITION 1°26.224'N 104°27.585'E IN THE APPROACHES TO THE WEST BOUND LANE OF THE MIDDLE CHANNEL. MARINERS ARE ADVISED TO NAVIGATE WITH CAUTION.

TT399

VESSELS ARRIVING TO SINGAPORE OR TRANSITING THROUGH THE STRAIT ARE RECOMMENDED TO UPDATE THEIR DESTINATION ACCURATELY IN THE AIS TO ENHANCE SITUATION AWARENESS FOR OTHER TRAFFIC IN THE VICINITY, EXAMPLE TO INDICATE SG-PEBGB.

TT400

CS CABLE RETRIEVER WILL BE CARRYING OUT SUBMARINE CABLE REPAIR OPERATIONS AT TSS WEST BOUND LANE SOUTH OF TG.AYAM OUTSIDE THE TSS AT THE FOLLOWING COORDINATES:

A	1°17.137'N	104°09.155'E
B	1°17.179'N	104°09.363'E
C	1°17.153'N	104°09.467'E
D	1°17.077'N	104°09.581'E
E	1°17.002'N	104°09.659'E

VESSELS ARE ADVISED TO KEEP A LOOKOUT, NAVIGATE WITH CAUTION AND GIVE A WIDE BERTH WHEN PASSING THE OPERATIONS AREA.

TT402

CS LODBROG WILL BE CARRYING OUT SUBMARINE CABLE REPAIR OPERATIONS IN THE TSS WESTBOUND LANE, BOUNDED BY THE FOLLOWING COORDINATES:

A	1°17.8679'N	104°16.3313'E
B	1°17.9880'N	104°17.8088'E
C	1°18.6350'N	104°18.9628'E
D	1°17.9608'N	104°19.1501'E
E	1°17.3256'N	104°18.0517'E
F	1°17.2664'N	104°16.3430'E

VESSELS ARE ADVISED TO KEEP A LOOKOUT, NAVIGATE WITH CAUTION AND GIVE A WIDE BERTH WHEN PASSING THE OPERATIONS AREA.

TT961

VESSELS INTENDING TO CROSS THE TRAFFIC SEPARATION SCHEME (TSS) OR PRECAUTIONARY AREAS IN THE SINGAPORE STRAIT DURING HOURS OF DARKNESS ARE RECOMMENDED TO DISPLAY THE NIGHT SIGNALS CONSISTING OF 3 ALL ROUND GREEN LIGHTS IN A VERTICAL LINE AS DETAILED IN MARITIME AND PORT AUTHORITY OF SINGAPORE'S PORT MARINE CIRCULAR, 04 OF 2013 DATED 7 MAY 2013.

SR123

SEA ROBBERIES ARE REPORTED IN THE SINGAPORE STRAIT. ALL VESSELS ARE REMINDED TO MAINTAIN A PROPER LOOK-OUT AND REPORT ANY SUSPICIOUS CRAFT TO VTIS SINGAPORE

ISSUED BY SINGAPORE PORT OPERATIONS CONTROL CENTRE (as at 26th Mar 2017)

V
EXTRACT OF ADMIRALTY NOTICES TO MARINERS
FOR DUAL-BADGED CHARTS

These notices can also be accessed directly from UKHO Website:

<https://www.admiralty.co.uk/maritime-safety-information/admiralty-notices-to-mariners>

1072 SINGAPORE - Changi East - Marina

Source: Maritime and Port Authority of Singapore

Chart 4041 [previous update 79/17] WGS84 DATUM

Delete symbol, marina, SAF Yacht Club 1°18.99'N 104°00.97'E

Chart 4043 [previous update 500/17] WGS84 DATUM

Delete symbol, marina, SAF Yacht Club 1°18.99'N 104°00.97'E

1090 SINGAPORE - Sentosa SW - Foul.

Source: Maritime and Port Authority of Singapore

Note: This update is Included in New Edition 4035, published 6 April 2017.

Chart 4034 [previous update 4437/16] WGS84 DATUM

Insert # (18) 1°14.913'N 103°48.266'E

1093 SINGAPORE - Temasek Fairway - Buoy

Source: Maritime and Port Authority of Singapore

Chart 4033 [previous update 6646/16] WGS84 DATUM

Insert  **Fl.G.4s Jurong Dua** 1°15.003'N 103°39.572'E

Chart 4038 [previous update 6603/16] WGS84 DATUM


Move  **Fl.G.4s Jurong Dua**, from: 1°14.95'N 103°39.55'E
to: 1°15.00'N 103°39.57'E

Chart 4040 [previous update 79/17] WGS84 DATUM

Move  **Fl.G.4s Jurong Dua**, from: 1°14.95'N 103°39.55'E
to: 1°15.00'N 103°39.57'E

V
EXTRACT OF ADMIRALTY NOTICES TO MARINERS
FOR DUAL-BADGED CHARTS

These notices can also be accessed directly from UKHO Website:

<https://www.admiralty.co.uk/maritime-safety-information/admiralty-notices-to-mariners>

1032(P) SINGAPORE - Port Approach Guides Singapore Tuas View to Pasir Panjang Terminal, Sinki Fairway to Southern Fairway and Southern Fairway to Changi - Note

Source: UKHO

1. Updated section: ANCHORAGES Text Box.

Replace:

Restrictions

• Some Anchorages have height or area restrictions which are reflected in the text.

With:

Anchorage regulations

- Any vessel at anchor is required to keep engines in a state of readiness for immediate use in case of emergency.
- Vessels under active employment or repair must have their full operational crew onboard. In other cases, at least half the number of officers, engineers and crew must be on board at all times. Alternatively minimum manning levels may be adjusted in accordance with the Port Authority guidance, based on the size and type of vessel.
- Some anchorages have height or area restrictions which are reflected in the text. Additional regulations are in force, for full details contact the Maritime and Port Authority of Singapore.

Charts affected - 8175 - 8176 - 8177

1078(P) SINGAPORE - Changi East - Marina

Source: Maritime and Port Authority of Singapore

1.	Update	Feature	Position
	Delete	symbol, marina, SAF Yacht Club	1° 18'99"N 104° 00'97"E

Charts affected - 8177

V

EXTRACT OF ADMIRALTY NOTICES TO MARINERS FOR DUAL-BADGED CHARTS

These notices can also be accessed directly from UKHO Website:

<https://www.admiralty.co.uk/maritime-safety-information/admiralty-notices-to-mariners>

1186 SINGAPORE STRAIT - Raffles Shoal - Depths

Source: Maritime and Port Authority of Singapore

Chart 4038 [previous update 1093/17] WGS84 DATUM

Insert depth, *14* (a) 1°11'35"N 103°40'49"E

Delete depth, *15*, close NW of: (a) above

Chart 4039 [previous update 6581/16] WGS84 DATUM

Insert depth, *14* (a) 1°11'35"N 103°40'49"E

Delete depth, *15*, close NW of: (a) above

Chart 4040 [previous update 1093/16] WGS84 DATUM

Insert depth, *14* (a) 1°11'35"N 103°40'49"E

Delete depth, *15*, close NW of: (a) above

1408(T) SINGAPORE STRAIT - Main Strait - Buoyage - Restricted area.

Source: Maritime and Port Authority of Singapore

1. A temporary exclusion zone for survey and oil removal operations on the sunken vessel '*Thorco Cloud*' will be established in the Precautionary Area of the Singapore Strait (off St. John's Islands/Pulau Sambu); and in the east-bound traffic lane of the Singapore Strait (off Changi/Pulau Batam) Traffic Separation Scheme (STRAITREP Sector 8).

2. The 400m wide exclusion zone will be marked by the following buoys:

<i>Designation</i>	<i>Buoy Type</i>	<i>Characteristic</i>	<i>Position</i>
TC-1	West cardinal	VQ(9)10s	1°12'26"N 103°53'92"E
TC-2	North cardinal	VQ	1°12'49"N 103°54'10"E
TC-3	North cardinal	VQ	1°13'05"N 103°55'04"E
TC-4	South cardinal	VQ(6) + LFI.10s	1°12'27"N 103°54'16"E
TC-5	South cardinal	VQ(6) + LFI.10s	1°12'80"N 103°55'04"E

3. The emergency wreck marking buoy, in position 1°12'70"N 103°54'22"E, will be removed on the establishment of the temporary exclusion zone.

4. Mariners are advised to navigate with caution in the area.

5. Navigational warning broadcasts will be promulgated by Singapore VTIS on VHF CH09 and NAVTEX. Mariners are to maintain a listening watch.
(WGS84 DATUM)

Charts affected - 4041

V

EXTRACT OF ADMIRALTY NOTICES TO MARINERS FOR DUAL-BADGED CHARTS

These notices can also be accessed directly from UKHO Website:

<https://www.admiralty.co.uk/maritime-safety-information/admiralty-notices-to-mariners>

1409(P) SINGAPORE - Western Anchorage (AWW) - Note.

Source: Maritime and Port Authority of Singapore

1. Updated section: ANCHORAGES Text Box, Western Anchorage (AWW).

Replace:

• Centred on 1°14·40'N 103°48·68'E. For general purposes of receiving stores, water and bunkers and awaiting a berth in the W sector of the port, by vessels other than non-gas free petroleum vessels, LNG vessels, LPG vessels and chemical vessels. Depths from 15.0 to 39.0m; depths of less than 15m exists within 2½ cables of Selegi Beacon (1°13·58'N 103°49·59'E). A wreck (1°13·95'N 103°49·36'E), depth 26.4m, lies in the SE part close to the E boundary.

With:

• Centred on 1°14·40'N 103°48·68'E. For general purposes of receiving stores, water and bunkers and awaiting a berth in the W sector of the port, by vessels other than non-gas free petroleum vessels, LNG vessels, LPG vessels and chemical vessels. Depths from 15 to 39m; depths of less than 15m exists within 2½ cables of Selegi Beacon (1°13·58'N 103°49·59'E). A wreck (1°13·95'N 103°49·36'E), depth 26.4m, lies in the SE part close to the E boundary and foul ground (1°14·91'N 103°48·27'E) exists in the NW part.

Charts affected - 8176

1496(T) SINGAPORE STRAIT - Main Strait - Buoy.

Source: mv Al Ghuwairiya

1. Isolated danger buoy, *Fl(2)5s Batu Berhanti*, in position 1°11·76'N 103°52·51'E is reported to be off station. Mariners are advised to navigate with caution in the area.
2. (WGS84)

Charts affected - 4041

Updated to Admiralty Notices to Mariners No. 13 of 2017 dated 30th Mar 2017

SINGAPORE ENC DISTRIBUTORS

ENC DISTRBUTOR	ADDRESS	TEL/FAX/EMAIL/WEBSITE
C-MAP Norway AS	Hovlandsveien 52, 4374, Egersund Norway	Tel: +47 51 46 4700 Fax: +47 51 46 4701 Email: enc@c-map.com Website: http://www.c-map.com
Chartworld GmbH	Atlantic Haus, Zirkusweg 1 D-20359 Hamburg, Germany	Tel: +4940 853 58 6942 Fax: +49 40 853 58 6949 Email: sales@chartworld.com
Chartworld Asia Pacific Pte Ltd	Frontech Centre #07-01 15 Jalan Kilang Barat Singapore 159357	Tel: +65 6513 3500 Website: http://www.chartworld.com http://www.ecdis-as-a-service.com
Global Navigation Solutions Ltd	2 Boon Leat Terrace #05-02/03/04, Harbourside Building 2 Singapore 119844	Tel: +65 62704060 Fax: +65 62763858 Email: sg.support@gnsworldwide.com Website: www.gnsworldwide.com
Japan Hydrographic Association (Electronic Charts Division)	Daiichi Sogo Bldg, 6F 1-6-6, Hanedakuko, Ota-ku Tokyo 144-0041 Japan	Tel: +81 3 5708 7093 Fax: +81 3 5708 7094 Email: enc-support@jha.jp Website: http://www.jha.or.jp/en/jha/
Maritime Information Systems (MARIS)	52, Telok Blangah Road #01-06 Telok Blangah House Singapore 058809	Tel: +65 6276 1472 Fax: +65 6276 1473 Email: support@maris.sg Website: http://www.maris.no
Maritime Information System AS (MARIS)	Danholmen 25, 3128 Notteroy Norway	Tel: +47 33 30 42 50 Fax: +47 33 30 42 51 Email: sales@maris.no Website: http://www.maris.no
Motion Smith	15 Jalan Kilang Barat #08-01/05 Frontech Centre Singapore 159357	Tel: +65 6220 5098 Fax: +65 6225 4902 Email: sales@motsmith.com Website: http://www.motsmith.com
PRIMAR STAVANGER	Lervigsveien 36, P.O Box 60 N-4001 Stavenger, Norway	Tel: +47 51 93 9500 Fax: +47 51 93 9501 Email: sales@ecc.no Website: http://www.primar.no
Transas Marine Pacific Pte Ltd	Cyber Centre 16/18 Jalan Kilang Barat Off Jalan Bukit Merah Singapore 159358	Tel: +65 6271 0200 Fax: +65 62717300 Email: navigation.asia@transas.com Website: http://www.transas.com
The United Kingdom Hydrographic Office	Admiralty Way, Taunton Somerset, TA1 2DN United Kingdom	Tel: +44 1823 33 7900 Fax: +44 1823 28 4077 Email: ENCS.SalesReports@ukho.gov.uk Website: http://www.ukho.gov.uk

Chart Distributors for the Maritime and Port Authority of Singapore
Charts and Publications

Please approach any of the Chart Distributors to purchase the Singaporean Charts and Publications

CHART DISTRIBUTORS	ADDRESS	TEL/FAX/EMAIL/WEBSITE
Chartco (Singapore) Pte Ltd	896 Dunearn Road #03-05 Sime Darby Centre Singapore 589472	Tel: +65 6545 9880 Ext 65285 Fax: +65 6545 8892 Email: leslie.khoo@chartco.com Website: http://www.chartco.com
Cornes (Singapore) Pte Ltd	10 Anson Road #17-04 International Plaza Singapore 079903	Tel: +65 6223 8320 Fax: +65 6223 8321 Email: sales9850@cspl.sg Website: http://www.cornes-charts.com
E.W. Liner Charts & Publications Pte Ltd	100, Pasir Panjang Road #05-10 Singapore 118518	Tel: +65 6323 0773 Fax: +65 6323 0775 Email: sales@ewliner.com Website: http://www.ewliner.com
Global Navigation Solutions Ltd	2 Boon Leat Terrace #05-02/03/04, Harbourside Building 2 Singapore 119844	Tel: +65 6270 4060 (After office hours: +65 9632 5268) Fax: +65 6276 3858 Email: sg.info@gnsworldwide.com Website: http://www.gnsworldwide.com
Motion Smith	15 Jalan Kilang Barat #08-01/05 Frontech Centre Singapore 159357	Tel: +65 6220 5098 (After office hours: +65 8163 9993) Fax: +65 225 4902 Email: sales@motsmith.com Website: http://www.motsmith.com

HYDROGRAPHIC NOTE - Instructions

1. Mariners are requested to notify the Chief Hydrographer, Maritime and Port Authority of Singapore, when new or suspected dangers to navigation are discovered, changes are observed in aids to navigation or where corrections to nautical publications may be necessary. Reports, which cannot be confirmed or are lacking in certain details should not be withheld.
2. Any ambiguities of time, positioning and depth should be stressed and any firm expectation of being able to check the information provided on a following voyage should be mentioned.
3. Mariners using satellite position fixing systems, eg. GPS, should provide details of equipment and datum used (where applicable). Where bearings (true or magnetic) are taken visually or by radar to fix a position, it should include more than two objects in order to provide a check on its accuracy. A position may also be defined by bearing and distance from a conspicuous object eg. beacon, lighthouse etc.
4. The note should include a tracing or a digital image of the chart used and the details should be clearly marked.
5. Echo sounders frequently register greater depths than the advertised maximum depth for the equipment, eg. a trace appearing at 50 metres may be in fact be 550 metres or even 1050 metres for equipment whose maximum depth is 500 metres. Erroneous depths caused by 2nd transmission error can usually be recognised by the following:
 - (a) the tracing being weaker than normal for the depth registered,
 - (b) the trace appearing to pass through the transmission line,
 - (c) the feathery nature of the trace.
6. Upon receipt of a hydrographic note, a Notice to Mariners may be issued. The sender's vessel or name is quoted as the source unless the same information is also received in foreign Notices to Mariners.
7. Reports of shoals, uncharted dangers and defects in aids to navigation may also be made to the appropriate Singapore Port Operations Control Centre on VHF Channels 10, 12, 14, 68 or 73.

HYDROGRAPHIC NOTE

To:

Chief Hydrographer
Maritime and Port Authority of Singapore
7B Keppel Road #20-00 Tanjong Pagar Complex
Singapore 089055

Tel : (65) 6325 2027
Fax : (65) 6226 1076
Email : hydrographic@mpa.gov.sg

Sender's Contact Details :

Date :

Name of Vessel :

Address of Sender :

Tel : Fax :

Email :

Nature of Observation :

General Location :

Subject :

Position : Lat. Long.

Charts Used :

Date & Time of Observation :

Details :
.....
.....
.....

Attachment :

Equipment Used :

Type of Position Fixing : GPS / DGPS Others :

Type of Echo Sounder :

Name and Signature :

Ship's/Company's Stamp :