



## SINGAPOREAN NOTICES TO MARINERS

---

	<b>CONTENT</b>	<b>Page</b>
I	Index of Charts & Publications	61
II	New Publications	62
	Notices to Mariners and Chart Corrections	64
	Temporary and Preliminary Notices	66
III	Navigational Information	67
	Amendments to Publications	68
IV	Reprint of Radio Navigational Warnings	71
V	Reprint of Admiralty Notices to Mariners for Dual Badged Charts	72

---

**The monthly Notices to Mariners contain corrective information affecting charts published by the Hydrographic Department, Maritime and Port Authority of Singapore. The information contained in these Notices should be updated on the charts affected. Notices under Section II apply only to the particular Singaporean Chart(s) indicated.**

---

Mariners are requested to notify the Chief Hydrographer, Maritime and Port Authority of Singapore, immediately on the discovery of new dangers or suspected dangers to navigation and of changes or defects in aids to navigation.

These notices can be accessed from the MPA webpage:

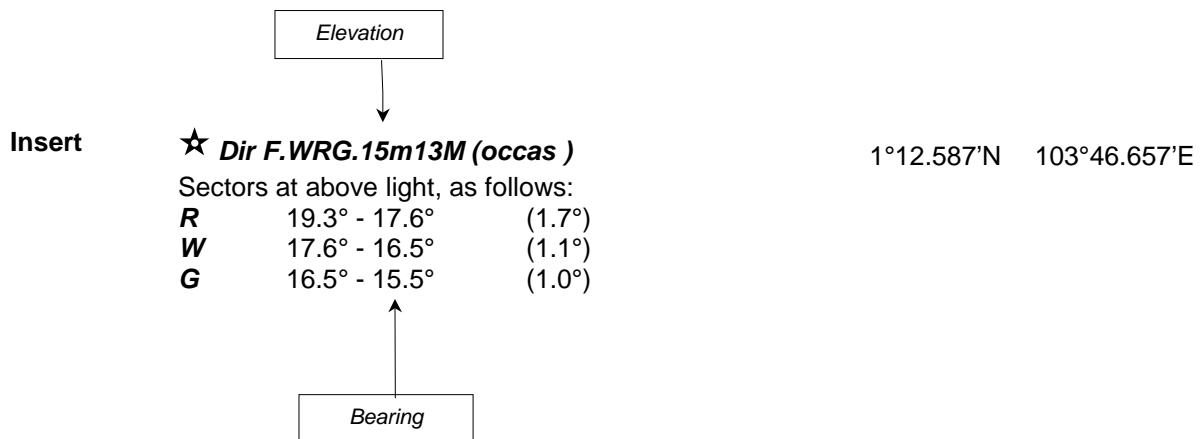
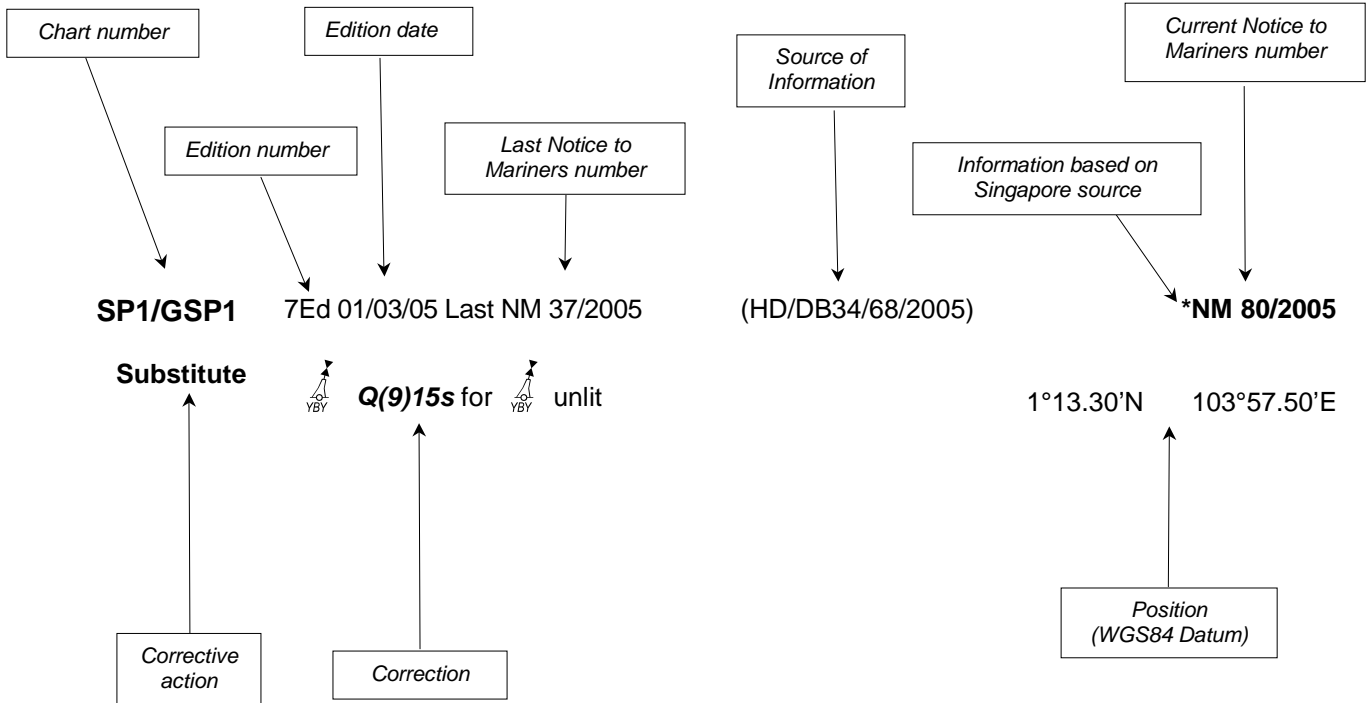
<http://www.mpa.gov.sg/infocentre/publications/noticesmari.htm>. Copies of these notices can also be obtained free from the Hydrographic Department, Maritime and Port Authority of Singapore or from our Chart Agent, Motion Smith telephone number (65) 62205098.

Hydrographic Department  
Maritime and Port Authority of Singapore  
P.O. Box 313  
PSA Building Post Office  
Singapore 911141

Tel : (65) 6375 1550  
Fax : (65) 6278 7646

## EXPLANATION OF FORMAT

The elements of a typical chart correction are explained below.



### Notes:

- a) Notice to Mariners number followed by:
  - T** indicates a Temporary Notice (eg. \*NM 80T/2005).
  - P** indicates a Preliminary Notice (eg. \*NM 80P/2005).
- b) Bearings are referred to True Compass in degrees clockwise from 000° to 359°. Bearings related to lights are from seaward.
- c) Heights and elevations are above Mean High Water Springs.

## INDEX OF CHARTS AND PUBLICATIONS

NOTICES	DESCRIPTION	PAGE	NOTICES	DESCRIPTION	PAGE
	New Edition Charts SP1/GSP1	62			
	New Edition Dual Badged Chart 4037	62			
	New Publication "SINGAPORE PORT INFORMATION - 2006/2007 EDITION"	63			
*38	202	64			
	502	64			
*39	202	64			
	502	64			
*40	202	64			
	502	64			
*41	501	64			
	502	65			
*42T	SP1/GSP1	66			
	202	66			
	500	66			
	501	66			
43T	200	66			
44T	200	66			
*45	Updating of publication "SINGAPORE PORT INFORMATION - 2006/2007 EDITION"	68			
	INDEX OF SINGAPOREAN CHARTS	81			
	INDEX OF DUAL BADGED CHARTS	82			

## II NEW PUBLICATIONS

### NEW EDITION CHARTS PUBLISHED 30<sup>TH</sup> MARCH 2006

**Chart No.** : SP1  
**Title** : Anchorages and Aids to Navigation  
**Coverage** : Lat 1° 08.20' N - 1° 29.40' N  
 Long 103° 36.10' E - 104° 07.20' E  
**Scale** : 1 : 60 000  
**Date Published** : 30<sup>th</sup> March 2006  
**Size of chart** : 961.4 x 651.2 mm  
**Remarks** : Includes amendments to anchorages, depth contour, submarine cables, prohibited seabed activities corridor, limit of working area, aids to navigation, controlling depths and coastline of Southern Islands. Chart of the same number published on 1<sup>st</sup> March 2005 is superseded.  
**Price (Excluding GST)** : S\$39.00

**Chart No.** : GSP1  
**Title** : Anchorages and Aids to Navigation (with area reference)  
**Coverage** : Lat 1° 08.20' N - 1° 29.40' N  
 Long 103° 36.10' E - 104° 07.20' E  
**Scale** : 1 : 60 000  
**Date Published** : 30<sup>th</sup> March 2006  
**Size of chart** : 961.4 x 651.2 mm  
**Remarks** : Includes amendments to anchorages, depth contour, submarine cables, prohibited seabed activities corridor, limit of working area, aids to navigation, controlling depths and coastline of Southern Islands. Chart of the same number published on 1<sup>st</sup> March 2005 is superseded.  
**Price (Excluding GST)** : S\$39.00

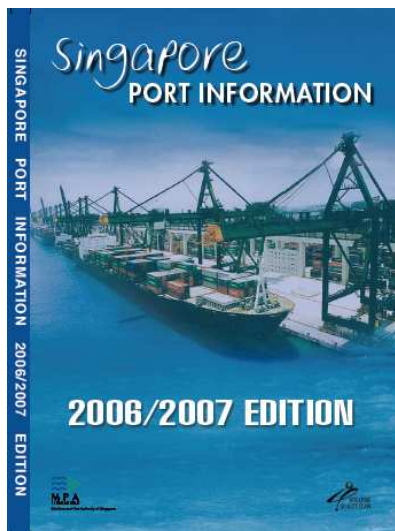
**Available from** : Motion Smith  
 76 Shenton Way #01-01  
 Singapore 079119  
 Tel : 6220 5098  
 (After office hours : Pager No. 9304 4156, 9304 4159)  
 Fax : 6225 4902  
 E-mail : sales@motsmith.com  
 Website : <http://www.motsmith.com>

### NEW EDITION DUAL BADGED CHART PUBLISHED 13<sup>TH</sup> APRIL 2006

**Chart No.** : 4037  
**Title** : Port of Singapore, Keppel Harbour, Tanjong Pagar Terminal and Approaches  
**Coverage** : Lat 1° 12.52' N - 1° 16.59' N  
 Long 103° 49.40' E - 103° 55.34' E  
**Scale** : 1:10 000  
**Date Published** : 13<sup>th</sup> April 2006  
**Remarks** : This new edition includes new surveys covering Southern Fairway, Eastern Anchorages, Approaches to East Keppel Fairway and Keppel Harbour including Post construction of the Southern Islands. This new edition supersedes the earlier edition published on 22/07/2004.

## II NEW PUBLICATIONS

### NEW PUBLICATION



#### SINGAPORE PORT INFORMATION - 2006/2007 EDITION

##### Summary of Publication

This publication contains Port Information such as Routing System in the Straits of Malacca and Singapore, important Port Marine Circulars and Notices issued by the Port Master, Characteristics of Aids to Navigation, Port Facilities, IALA Maritime Buoyage System and Chart Catalogue.

##### To whom will it be useful

Mariners, shipping communities, port users and other interested users.

##### Frequency/Year of Publication

Biennially

##### Cost of publication

The price of the publication is S\$15.60 (excluding Goods & Services Tax).

##### Order Enquires

Motion Smith, 76 Shenton Way #01-01, Singapore 079119

Tel : (65) 6220 5098  
(After office hours:  
Pager No. 9304 4156, 9304 4159)

Fax : (65) 6225 4902

E-mail : sales@motsmith.com

Website : <http://www.motsmith.com>

##### Remarks



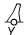
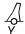



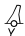
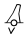
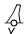
Information provided in this publication is correct up to the time of printing based on data available at the Hydrographic Department, Maritime and Port Authority of Singapore.

##### Updates

Any updates to this publication which are critical to safe navigation will be promulgated through the monthly Singaporean Notices to Mariners. These notices can be accessed from MPA webpage:

" [www.mpa.gov.sg/homepage/publications/noticesmari.html](http://www.mpa.gov.sg/homepage/publications/noticesmari.html) ".

**II**  
**NOTICES TO MARINERS AND CHART CORRECTIONS**

<b>202</b>	4Ed 15/11/04 Last NM 30/2006	(HD/HE025/050/2006)		<b>*NM 38/2006</b>
<b>Insert</b>	 <b>Q.Y</b>		1°18.65'N	104°00.98'E
<b>Delete</b>	 Fl.Y.2s		1°18.24'N	104°00.99'E
		(HD/HE025/051/2006)		<b>*NM 39/2006</b>
<b>Insert</b>	 <b>Q.Y</b>		1°18.10'N	104°01.00'E
<b>Delete</b>	 Fl.Y.2s		1°18.11'N	104°01.20'E
		(HD/HE025/052/2006)		<b>*NM 40/2006</b>
<b>Substitute</b>	 <b>Q.Y</b> for Fl.Y.4s		1°18.14'N	104°02.41'E
<hr/>				
<b>501</b>	3Ed 15/09/03 Last NM 31/2006	(HD/HY Code AB0300606)		<b>*NM 41/2006</b>
<b>Delete</b>	Anchorage limit, pecked line joining positions		1°15.07'N	103°52.30'E
			1°14.74'N	103°52.11'E
<b>Insert</b>	Anchorage limit, pecked line joining positions		1°15.07'N	103°52.30'E
			1°14.68'N	103°52.18'E
<hr/>				
<b>502</b>	3Ed 25/10/05 Last NM 32/2006	(HD/HE025/050/2006)		<b>*NM 38/2006</b>
<b>Insert</b>	 <b>CNB-1, Q.Y</b>		1°18.65'N	104°00.98'E
<b>Delete</b>	 CNB-1, Fl.Y.2s		1°18.24'N	104°00.99'E
		(HD/HE025/051/2006)		<b>*NM 39/2006</b>
<b>Insert</b>	 <b>CNB-2, Q.Y</b>		1°18.10'N	104°01.00'E
<b>Delete</b>	 CNB-2, Fl.Y.2s		1°18.11'N	104°01.20'E
		(HD/HE025/052/2006)		<b>*NM 40/2006</b>
<b>Substitute</b>	 <b>CNB-3, Q.Y</b> for CNB-3, Fl.Y.4s		1°18.14'N	104°02.41'E

**II**  
**NOTICES TO MARINERS AND CHART CORRECTIONS**

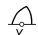
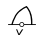

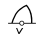
(HD/HY Code AB0300606)

**\*NM 41/2006**

<b>Delete</b>	Anchorage limit, pecked line joining positions	1°15.07'N	103°52.30'E
		1°14.74'N	103°52.11'E
<b>Insert</b>	Anchorage limit, pecked line joining positions	1°15.07'N	103°52.30'E
		1°14.68'N	103°52.18'E
<b>Delete</b>	Anchorage limit, pecked line joining positions	1°16.08'N	103°51.76'E
		1°16.33'N	103°52.11'E
<b>Insert</b>	Anchorage limit, pecked line joining positions	1°16.08'N	103°51.76'E
		1°15.92'N	103°51.88'E
		1°16.17'N	103°52.22'E
		1°16.33'N	103°52.11'E

---

**II**  
**TEMPORARY AND PRELIMINARY NOTICES**

<b>SP1/GSP1</b>	7Ed 01/03/05	(HD/DB34/019/2006)	<b>*NM 42T/2006</b>
<b>Relocate</b>	 <b>Raffles, FI(6)Y15s</b> (1°10.56'N, 103°41.72'E)		1°10.20'N 103°42.19'E
<hr/>			
<b>200</b>	2Ed 30/11/05	(Marine Dept Peninsular Malaysia Notice to Mariners 14/2006)	<b>NM 43T/2006</b>
<b>Insert</b>	Legend <b>(Missing)</b> against One Fathom Bank Resilient Light Beacon		3°00.84'N 100°51.86'E
		(Japanese Notices to Mariners 9/291(T)/2006)	<b>NM 44T/2006</b>
<b>Insert</b>	Legend <b>(Missing)</b> against North Cardinal Mark Light Beacon at Pasir Selatan		2°40.8'N 101°06.5'E
<hr/>			
<b>202</b>	4Ed 15/11/04	(HD/DB34/019/2006)	<b>*NM 42T/2006</b>
<b>Relocate</b>	 <b>Raffles, FI(6)Y</b> (1°10.56'N, 103°41.72'E)		1°10.20'N 103°42.19'E
<hr/>			
<b>500</b>	4Ed 15/08/05	(HD/DB34/019/2006)	<b>*NM 42T/2006</b>
<b>Relocate</b>	 <b>Raffles, FI(6)Y15s</b> (1°10.56'N, 103°41.72'E)		1°10.20'N 103°42.19'E
<hr/>			
<b>501</b>	3Ed 15/09/03	(HD/DB34/019/2006)	<b>*NM 42T/2006</b>
<b>Relocate</b>	 <b>Raffles, FI(6)Y15s</b> (1°10.56'N, 103°41.72'E)		1°10.20'N 103°42.19'E
<hr/>			

**III**  
**NAVIGATIONAL INFORMATION**

Nil

### III AMENDMENTS TO PUBLICATIONS

**\*(NM 45/2006) UPDATING OF PUBLICATION “SINGAPORE PORT INFORMATION 2006/2007 EDITION”**

- 1 Page 28 – paragraph 2(b), Amend word shown in Bold

CONFIRMATION OF ARRIVAL – this is the VHF radiotelephone **report** given through Vessel Traffic Information Service (VTIS) to the Port Master when the vessel is within VTIS operational area.

- 2 Page 35

Controlled Sectors		Control Stations	
Delete	<i>Insert</i>	Delete	<i>Insert</i>
-	-	Sembawang Control	<b>Sembawang Control</b>
-	-	-	-
-	-	-	-
-	-	-	-
West Jurong Sector	<b>West Jurong Sector</b>	Jurong Control	<b>Jurong Control</b>
-	-	-	-
-	-	Jurong Control	<b>Jurong Control</b>

- 3 Page 124 – APPROACHES TO SHELL SBM

Semakau Light,

Light Characteristics	
Delete	<i>Insert</i>
Dir F.WRG.15s13M (occa)	<b>Dir F.WRG.15m13M (occas)</b>
Dir F.WRG.15s4M (Day)	<b>Dir F.WRG.15m4M (Day)</b>

- 4 Page 131 – NEW CLIFFORD PIER

- 4.1 Title:

Substitute “**MARINA SOUTH PIER**” for “NEW CLIFFORD PIER”

- 4.2 MSP3 Beacon

Light Characteristics	
Delete	<i>Insert</i>
Fl.Y.4s7m3M	<b>Fl.Y.6s7m3M</b>

### III AMENDMENTS TO PUBLICATIONS

5 Page 149 – Item 9

Title:

Substitute (***JURONG PORT PTE LTD***) for (JURONG PORT LTD)

6 Page 155, Item 28, PULAU BUSING (TANKSTORE)

Delete			<i>Insert</i>		
Berth	Length of Berth	Max LOA	Berth	Length of Berth	Max LOA
5	Main	280m	<b><i>5Main</i></b>	<b><i>280m</i></b>	-
5	East	110m	<b><i>5East</i></b>	<b><i>110m</i></b>	<b><i>140m</i></b>
5	West	110m	<b><i>5West</i></b>	<b><i>110m</i></b>	-

7 Page 156, Item 29, PULAU BUKOM

	Delete	<i>Insert</i>
Berth	Depth Alongside (Year Surveyed)	Depth Alongside (Year Surveyed)
3	11.1m (2005)	<b><i>11.3m (2005)</i></b>
4	10.8m (2005)	<b><i>11.8m (2005)</i></b>
5	12.6m (2005)	<b><i>12.9m (2005)</i></b>
6	15.1m (2005)	<b><i>15.6m (2005)</i></b>
7	13.2m (2005)	<b><i>13.5m (2005)</i></b>
9	12.7m (2005)	<b><i>13.0m (2005)</i></b>
11	5.5m (2005)	<b><i>5.7m (2005)</i></b>

8 Page 158, Item 37, PULAU SEBAROK

	Delete	<i>Insert</i>
Berth	Controlling Depth In Approaches	Controlling Depth
Pier 6	Pier 7	-

**III**  
**AMENDMENTS TO PUBLICATIONS**

9 Page 158, Item 37, PULAU SEBAROK

<b>Delete</b>				
Berth	Length of Berth	Max LOA	Depth Alongside (Year Surveyed)	Controlling Depth In Approaches
110m	110m	10.1m (1991)	8.0m	

<b>Insert</b>				
Berth	Length of Berth	Max LOA	Depth Alongside (Year Surveyed)	Controlling Depth In Approaches
<b>Pier 7</b>	<b>110m</b>	<b>110m</b>	<b>10.1m (1991)</b>	<b>8.0m</b>

**IV**  
**REPRINT OF RADIO NAVIGATIONAL WARNINGS**

Nil

**V**  
**REPRINT OF ADMIRALTY NOTICES TO MARINERS**  
**FOR DUAL BADGED CHARTS**

**868/06\* SINGAPORE — Singapore Island — Changi East — Southwards - Legends.**

Source: Maritime and Port Authority of Singapore DBNM 01/06 & PMC 03/06

**Chart 4041** [previous update 506/06 ] WGS84 DATUM

Insert legend, *See NM 867(P)/06*, centred on:  
 1° 18' .08N. , 104° 03' .69E.  
 1° 17' .10N. , 104° 00' .20E.  
 1° 16' .28N. , 103° 57' .38E.

**Chart 4042** [previous update 866/06] WGS84 DATUM

Insert legend, *See NM 867(P)/06*, centred on: 1° 18' .08N. , 104° 03' .69E.

**Chart 4043** [previous update 5407/06 ] WGS84 DATUM

Insert legend, *See NM 867(P)/06*, centred on:  
 1° 18' .08N. , 104° 03' .69E.  
 1° 17' .40N. , 104° 00' .55E.

**1164/06 JOHOR STRAIT — Johor Port — Legends.**

Source: UK Hydrographic Office

**Chart 4044** [previous update 4585/05 ](plan B, Johor Port) WGS84 DATUM

Insert legend, *See NM 1163(P)/06*, centred on:  
 1° 25' .80N. , 103° 55' .30E.  
 1° 26' .12N. , 103° 53' .20E.

**Chart 4044** [previous update 4585/05 ] WGS84 DATUM

Insert legend, *See NM 1163(P)/06*, centred on: 1° 25' .80N. , 103° 54' .32E.

**1338/06 \* JOHOR STRAIT — Johor Port — Tanjong Punggol Eastwards — Buoy.**

Source: Maritime and Port Authority of Singapore DBNM 05/06

**Chart 4044** [previous update 1164/06 ](plan B, Johor Port) WGS84 DATUM

Delete  *Fl.Y.6s* 1° 25' .36N. , 103° 54' .92E.

**Chart 4044** [previous update 1164/06 ] WGS84 DATUM

Delete  *Fl.Y.6s* 1° 25' .36N. , 103° 54' .92E.

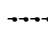
**V**  
**REPRINT OF ADMIRALTY NOTICES TO MARINERS**  
**FOR DUAL BADGED CHARTS**

**1415/06 \* SINGAPORE — Singapore Island — Changi East — Southwards — Anchorage areas. Depths. Legends. Outfall. Cautionary note.**

Source: Maritime and Port Authority of Singapore DBNM 01/06, 32/06 & PMC 03/06

*Note:* Former Notice 867(P)/06 is cancelled.

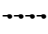
**Chart 4041** [*previous update 868/06* ] WGS84 DATUM

Insert	the accompanying block A, showing amendments to anchorage areas and legends, centred on:	1° 17' .88N. , 104° 03' .76E.
	the accompanying block B, showing amendments to anchorage areas and legends, centred on:	1° 16' .75N. , 103° 58' .48E.
	the accompanying note, OUTFALL - DIFFUSERS, centred on:	1° 19' .18N. , 103° 57' .51E.
	outfall,  , joining:	1° 18' .80N. , 104° 00' .45E. (shore)
		(a) 1° 18' .51N. , 104° 00' .63E.
		(b) 1° 17' .66N. , 104° 02' .02E.
		(c) 1° 17' .30N. , 104° 02' .62E.
	legend, <i>Outfall (buried)</i> , along:	(a)-(b) above
	legend, <i>Diffusers (see Note)</i> , along:	(b)-(c) above
Amend	legend to, <i>J</i>	1° 17' .47N. , 104° 00' .82E.
	legend to, <i>P</i>	1° 17' .13N. , 104° 01' .02E.

**Chart 4042** [*previous update 868/06* ] WGS84 DATUM

Insert	the accompanying block, showing amendments to anchorage areas, legends and outfall, centred on:	1° 17' .85N. , 104° 03' .70E.
	the accompanying note, OUTFALL - DIFFUSERS, centred on:	1° 10' .90N. , 104° 06' .87E.

**Chart 4043** [*previous update 868/06* ] WGS84 DATUM

Insert	the accompanying block A, showing amendments to anchorage areas and legends, centred on:	1° 17' .9N. , 104° 04' .2E.
	the accompanying block B, showing amendments to anchorage areas and legends, centred on:	1° 16' .8N. , 103° 59' .9E.
	the accompanying note, OUTFALL - DIFFUSERS, centred on:	1° 27' .6N. , 104° 08' .2E.
	outfall,  , joining:	1° 18' .80N. , 104° 00' .45E.
		(a) 1° 18' .51N. , 104° 00' .63E.
		(b) 1° 17' .66N. , 104° 02' .02E.
		(c) 1° 17' .30N. , 104° 02' .62E.
	legend, <i>Outfall (buried)</i> , along:	(a)-(b) above
	legend, <i>Diffusers (see Note)</i> , along:	(b)-(c) above

**V**  
**REPRINT OF ADMIRALTY NOTICES TO MARINERS**  
**FOR DUAL BADGED CHARTS**

**1419/06 \* SINGAPORE — Selat Sinki — Pulau Sudong Northwards — Pulau Salu Eastwards and Selat Salu — Buoyage.**

Source: Maritime and Port Authority of Singapore DBNM 02/06


**Chart 4032** [previous update 5743/05 ] WGS84 DATUM

Delete  *Fl.Y.4s MDF2* 1° 13' .049N. , 103° 42' .676E.  
Delete  *Fl.Y.6s MDF3* 1° 12' .782N. , 103° 42' .793E.

**Chart 4039** [previous update New Edition 01 / 12 / 2005 ] WGS84 DATUM

Delete  *Fl.Y.4s MDF2* 1° 13' .05N. , 103° 42' .68E.

**Chart 4040** [previous update 509/06 ] WGS84 DATUM

Delete  *Fl.Y.4s MDF2* 1° 13' .05N. , 103° 42' .68E.

**1420/06 \* SINGAPORE — West Jurong Channel — Tanjong Kling — West Quay — Dredged depth.**

Source: Maritime and Port Authority of Singapore DBNM 03/06

**Chart 4033** [previous update 508/06 ] WGS84 DATUM

Amend dredged depth to, *4.8m (2005)* 1° 18' .173N. , 103° 42' .136E.

**1421/06 \* SINGAPORE — Tuas View — Tuas Bay — Dredged depth. Buoy.**

Source: Maritime and Port Authority of Singapore DBNMs 04 & 06/06

**Chart 4030** [previous update 509/06 ] WGS84 DATUM

Amend dredged depth to, *13.1m (2006)* 1° 16' .680N. , 103° 38' .684E.

**Chart 4033** [previous update 1420/06 ] WGS84 DATUM

Amend dredged depth to, *13.1m (2006)* 1° 16' .680N. , 103° 38' .684E.

Delete  1° 17' .205N. , 103° 39' .658E.

**V**  
**REPRINT OF ADMIRALTY NOTICES TO MARINERS**  
**FOR DUAL BADGED CHARTS**

**867(P)/06 SINGAPORE - Singapore Island - Changi East Southwards - Anchorage areas.**

Source: Maritime and Port Authority of Singapore DBNM 01/06 & PMC 03/06

1. With effect from 08:00hrs 1 February 2006 the Bunkering Anchorages in the Eastern Port waters are revised as follows:  
 Eastern Bunkering A (AEBA)  
 Changi Holding Anchorage (ACH) (1° 18' .1N., 104° 05' .3E.) is to be combined with Changi Special Purposes Anchorage (ACSP)(1° 18'.0N., 104° 03'.8E.) to become Eastern Bunkering A Anchorage with the following amended designations:  
 A for 5  
 B for J  
 C for H  
 D for G  
 E for M  
 F for L  
 G for K  
 H for 6
2. Eastern Bunkering B (AEBB)  
 This replaces Eastern Special Purpose C (AESPC) (1° 17' .3N., 104° 00' .2E.) with the following amended designations:  
 J for C  
 K for B  
 L for A  
 M for F  
 N for E  
 P for D
3. Eastern Bunkering C (AEBC)  
 This new anchorage has been established bounded by the following positions:  
 1° 16' .630N., 103° 58' .710E.  
 1° 16' .107N., 103° 57' .681E.,  
 1° 16' .107N., 103° 56' .512E.  
 1° 16' .630N., 103° 56' .512E.  
 divided into sectors Q and R.
4. Charts affected will be updated by Notice to Marines blocks.

**Charts affected - 3831 - 3833 - 4041 - 4042 - 4043 - 5502**

**1163(P)/06 JOHOR STRAIT – Johor Port – Dredged areas. Coastline. Jetties.**

Source: Malaysian Chart 6128

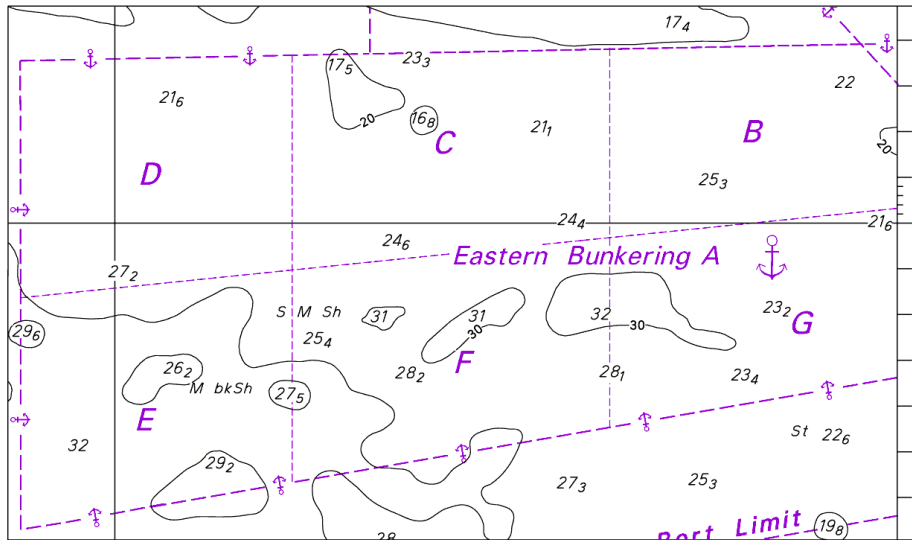
1. Port developments at Johor Port include:
  - a) New dredged areas exist from the container terminal (1° 26' .2N., 103° 53' .4E.) to the ferry terminal (1° 26' .0N., 103° 55' .2E.)
  - b) Changes to coastline and the hazardous liquid cargo jetty (1° 26' .4N., 103° 53' .1E.)
2. Mariners are advised to consult Johor Port Authority for the latest information.
3. These and other changes will be included in the next New Edition of Chart 4044.

**Chart affected - 4044**

**V**  
**REPRINT OF ADMIRALTY NOTICES TO MARINERS**  
**FOR DUAL BADGED CHARTS**

Note: 1415/06\* - Chart 4041 – accompanying block A

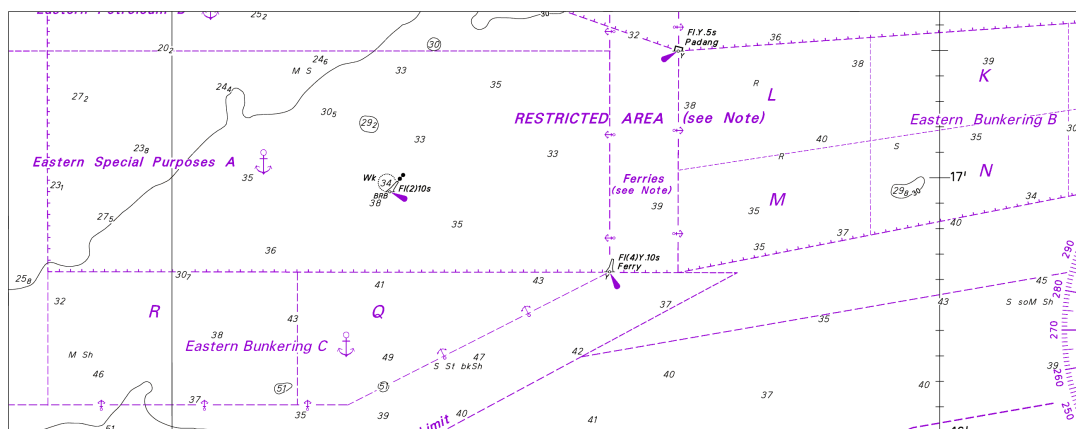
This block correction is for illustration only. The actual block correction should be obtained from the Admiralty Notices to Mariners.



Block A for Chart No 4041

Note: 1415/06\* - Chart 4041 – accompanying block B

This block correction is for illustration only. The actual block correction should be obtained from the Admiralty Notices to Mariners.

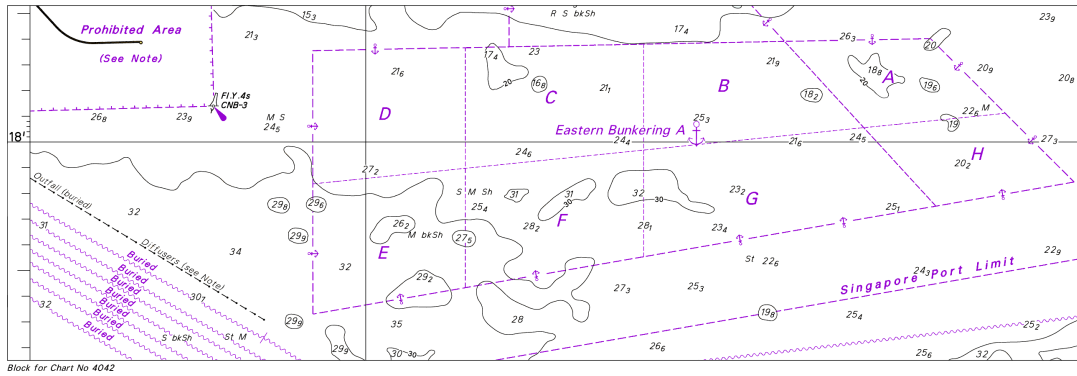


Block B for Chart No 4041

**V**  
**REPRINT OF ADMIRALTY NOTICES TO MARINERS**  
**FOR DUAL BADGED CHARTS**

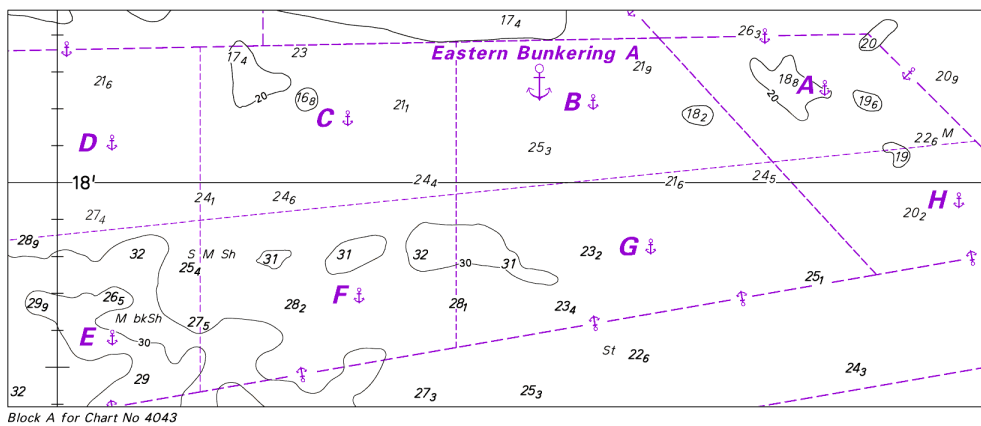
Note: 1415/06\* - Chart 4042 – accompanying block

This block correction is for illustration only. The actual block correction should be obtained from the Admiralty Notices to Mariners.



Note: 1415/06\* - Chart 4043 – accompanying block A

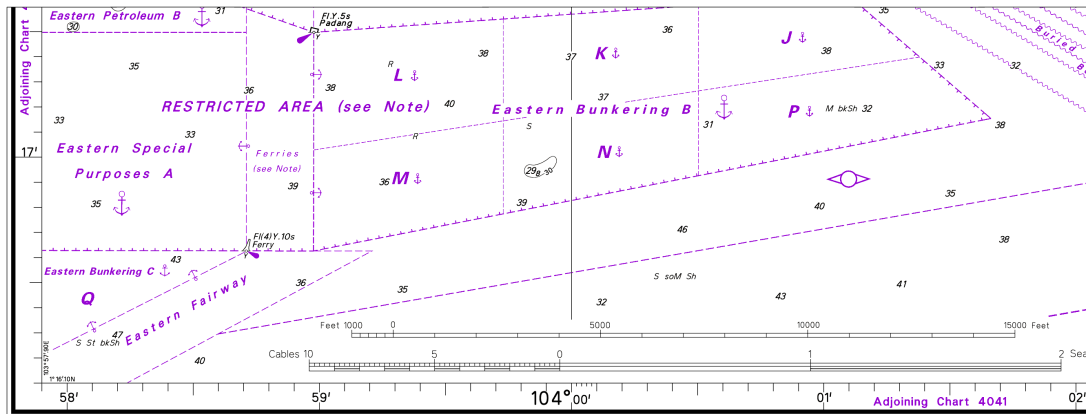
This block correction is for illustration only. The actual block correction should be obtained from the Admiralty Notices to Mariners.



**V**  
**REPRINT OF ADMIRALTY NOTICES TO MARINERS**  
**FOR DUAL BADGED CHARTS**

Note: 1415/06\* - Chart 4043 – accompanying block B

This block correction is for illustration only. The actual block correction should be obtained from the Admiralty Notices to Mariners.



Block B for Chart No 4043

**MPA ELECTRONIC NAVIGATIONAL CHARTS (ENC) DISTRIBUTORS**

Please approach any of the appointed distributors to purchase the Singapore ENC.

PERSON TO CONTACT	ADDRESS	TELEPHONE/FAX NO./E-MAIL/WEBSITE
Mr Chong Chee Meng General Manager	DPM (Singapore) Pte Ltd 1 Maritime Square, #09-72 Harbour Front Centre, Singapore 099253	Tel. No.: +65 6270 4060 Fax No.: +65 6276 3858 E-mail: <a href="mailto:sales@dpmsingapore.com.sg">sales@dpmsingapore.com.sg</a> Website: <a href="http://www.dpmsingapore.com.sg">http://www.dpmsingapore.com.sg</a>
Ms Shirley Koh	Kelvin Hughes(S) Pte Ltd 8 Pandan Avenue #02-00, Singapore 609384	Tel. No.: +65 6545 9880 ext.12 Fax No.: +65 6545 8892 E-mail: <a href="mailto:shirley.koh@khsing.com">shirley.koh@khsing.com</a> Website: <a href="http://www.kelvinhughes.co.uk">http://www.kelvinhughes.co.uk</a>
Mr Philip Loh Sales Manager	Motion Smith 76 Shenton Way #01-01, Singapore 079119	Tel. No.: +65 6220 5098 Fax No.: +65 6225 4902 E-mail: <a href="mailto:sales@motsmith.com">sales@motsmith.com</a> Website: <a href="http://www.motsmith.com">http://www.motsmith.com</a>
Mr Choy Kum Weng Manager	Vector Services Pte Ltd 2 Maritime Square #04-12B SP1 Building, Singapore 099255	Tel. No.: +65 6278 7212 Fax No.: +65 6278 7212 E-mail: <a href="mailto:kwchoy@pacific.net.sg">kwchoy@pacific.net.sg</a>
Mr Looi Keen Wai Regional Sales Manager	Transas Marine Pacific Pte Ltd 750C Chai Chee Road, Technopark@Chai Chee, #04-07 Singapore 469003	Tel. No.: +65 6443 3061 Fax No.: +65 6443 3025 E-mail: <a href="mailto:looi@transas.com.sg">looi@transas.com.sg</a> Website: <a href="http://www.transas.com.sg">www.transas.com.sg</a>
Mr George Arts President	Marine Press of Canada 640 Rue St-Paul Ouest, Suite 300 Montreal (QC) Canada, H3C1L9	Tel. No.: (514) 866-8342 Fax No.: (514) 866-9050 E-mail : <a href="mailto:sales@marinepress.com">sales@marinepress.com</a> Website: <a href="http://www.marinepress.com">www.marinepress.com</a>
Mr Thomas Wilde Superintendent	HanseNautic GmbH Bade & Hornig, Eckardt & Messtorff Herrengraben 31 D-20459 Hamburg, Germany	Tel. No.: +49 40 374 811-32 Fax No.: +49 40 366 400 E-mail: <a href="mailto:info@HanseNautic.com">info@HanseNautic.com</a> Website : <a href="http://www.HanseNautic.com">http://www.HanseNautic.com</a>
Mr Daniel Schwarzwaelder Sales Manager	SevenCs AG + Co. KG Ruhrstrasse 90, D-22761 Hamburg, Germany	Tel. No.: +49 40 853 58 6940 Fax No.: +49 40 853 58 6949 E-mail: <a href="mailto:sales@chartworld.com">sales@chartworld.com</a> Website : <a href="http://www.sevencs.com">http://www.sevencs.com</a>
Dr Tadahiko KATSURA	Japan Hydrographic Association ENC Service Division 5-3-3 Tsukiji, Chuo-ku Tokyo 104-0045, Japan	Tel. No.: +81 3 3543 0752 Fax No.: +81 3 3543 0695 E-mail: <a href="mailto:enc-support@jha.jp">enc-support@jha.jp</a> Website: <a href="http://www.jha.jp.com">http://www.jha.jp.com</a>
Mr Curt Kim Doo-hwan Foreign Business Manager	E_MLX Co. Ltd Ssangyong Research No.2 Lab Sinseong-Dong 100 Yusong-Gu, Daejoen 305-804, Korea (ROK)	Tel. No.: +82 42 865 1893 Fax No.: +82 42 865 1884 E-mail: <a href="mailto:curt-kim@emlx.co.kr">curt-kim@emlx.co.kr</a>
Mr C G Kim	Korean Ocean Development Co. Ltd 2ND Fl, Dongbang Bldg, 25-4, 4 Ga Jungang-Dong, Jung-Gu, Busan, South Korea	Tel. No.: +82 514 66 0760 Fax No.: +82 514 65 9345 E-mail: <a href="mailto:sales@chartkorea.com">sales@chartkorea.com</a> Website: <a href="http://chartkorea.com">http://chartkorea.com</a>
Mr Kjell Nodland	C-Map Norway A/S P.O Box 212 , N-4371 Egersund, Norway	Tel No.: +47 514 64 700 Fax No: +47 514 64 701 E-mail: <a href="mailto:market@c-map.no">market@c-map.no</a> Website : <a href="http://www.c-map.no">http://www.c-map.no</a>

Ms Marianne Barstad	PRIMAR STAVANGER Lervigsveien 36, P.O Box 60, N-4001 Stavanger, Norway	Tel. No.: +47 51 93 9500 Fax No.: +47 51 93 9501 E-mail: <a href="mailto:sales@primar.org">sales@primar.org</a> Website : <a href="http://www.primar-stavanger.org">http://www.primar-stavanger.org</a>
Mr Roar Moe International Marketing Coordinator	Maritime Information System AS (MARIS) Danholmen 25, No.3115 Tonsberg, Norway	Tel. No.: +47 33 30 42 50 Fax No.: +47 33 30 42 51 E-mail: <a href="mailto:roar.moe@maris.no">roar.moe@maris.no</a> Website: <a href="http://www.maris.no">http://www.maris.no</a>
Ms Hayley Jopson Regional Sales Manager	United Kingdom Hydrographic Office Admiralty Way, Taunton, Somerset TA1 2DN United Kingdom	Tel. No.: +44 (0)1823 337900 Fax No.: +44 (0)1823 284077 E-mail: <a href="mailto:vargroup@ukho.gov.uk">vargroup@ukho.gov.uk</a> Website: <a href="http://www.ukho.gov.uk">www.ukho.gov.uk</a>

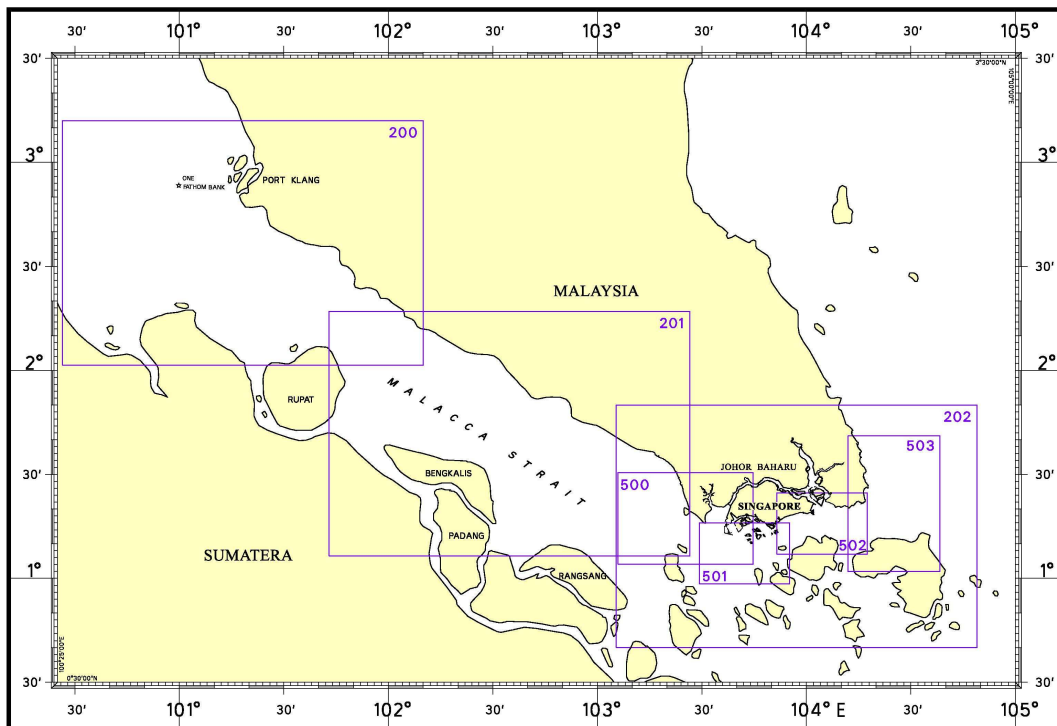
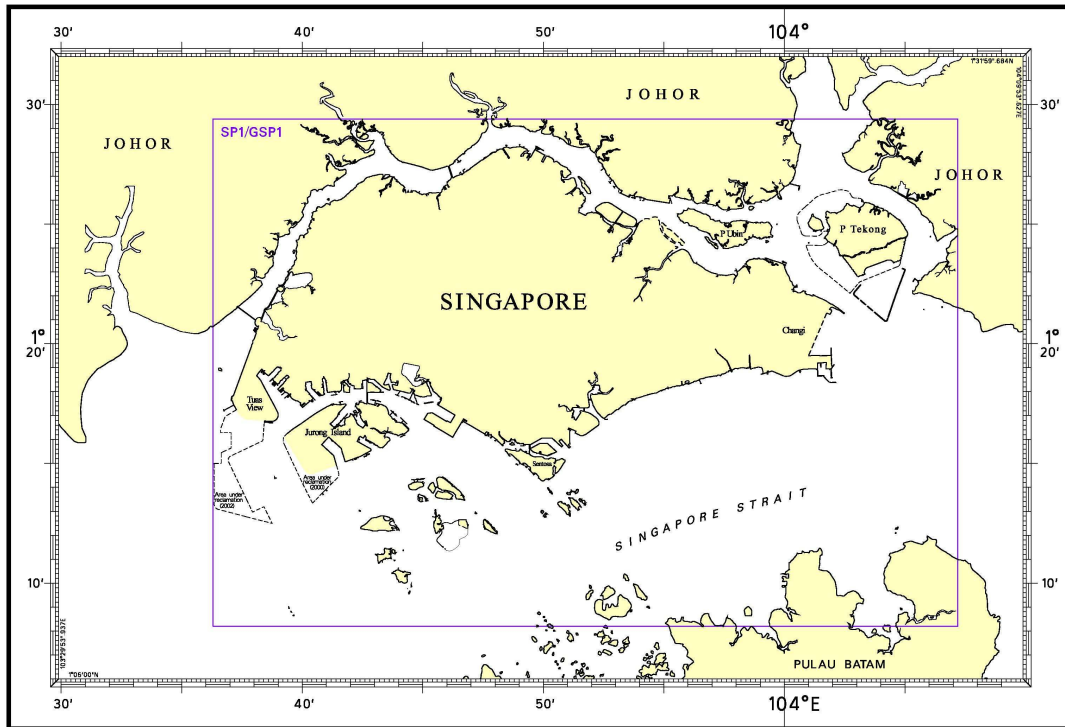
---

**CHART AGENT FOR MARITIME AND PORT AUTHORITY OF SINGAPORE (MPA) PUBLICATIONS**

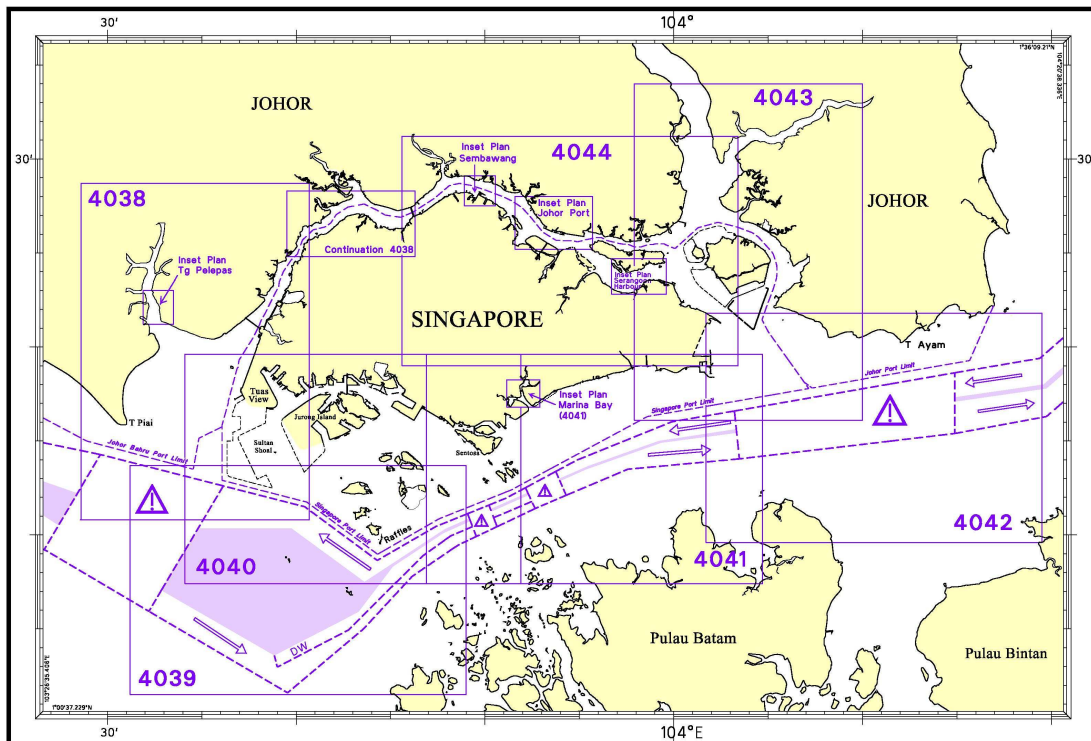
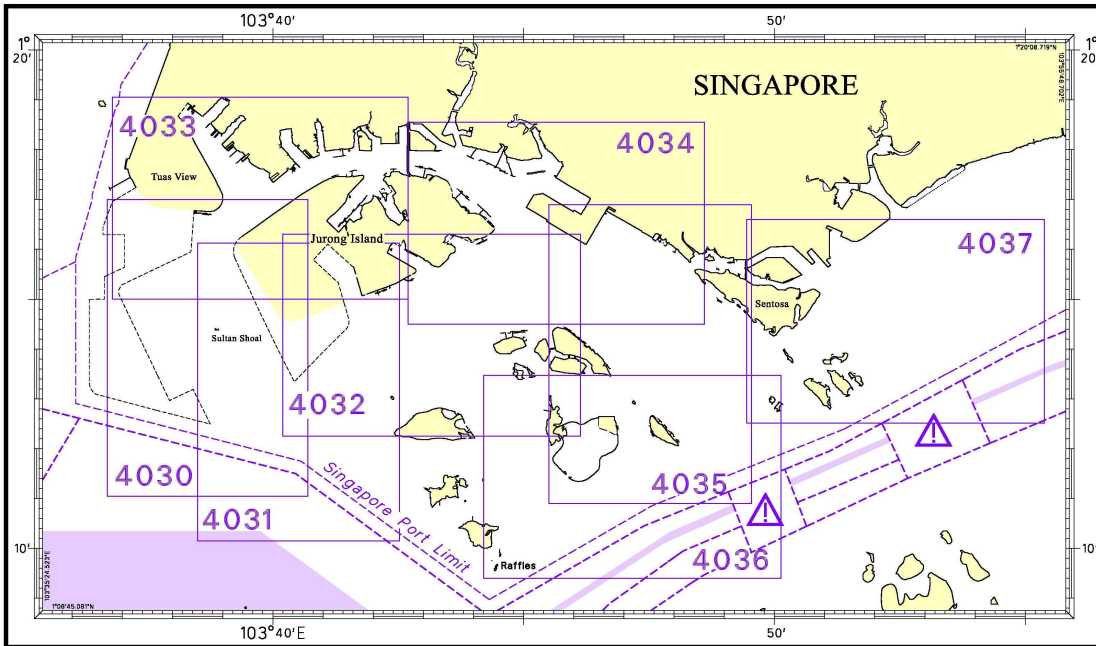
**Agent's name** : Motion Smith  
**Address** : 76 Shenton Way # 01-01  
Singapore 079119  
**Telephone** : (65) 6220 5098  
: (After Office hours: Pager No. 9304 4156, 9304 4159)  
**Fax No.** : (65) 6225 4902  
**E-mail** : [sales@motsmith.com](mailto:sales@motsmith.com)  
**Website** : <http://www.motsmith.com>

---

# INDEX OF SINGAPOREAN CHARTS



**INDEX OF DUAL BADGED CHARTS**



## HYDROGRAPHIC NOTE - Instructions

1. Mariners are requested to notify the Chief Hydrographer, Maritime and Port Authority of Singapore, when new or suspected dangers to navigation are discovered, changes are observed in aids to navigation or where corrections to nautical publications may be necessary. Reports which cannot be confirmed or are lacking in certain details should not be withheld.
2. Any ambiguities of time, positioning and depth should be stressed and any firm expectation of being able to check the information provided on a following voyage should be mentioned.
3. Mariners using satellite position fixing systems, eg. GPS, should provide details of equipment and datum used (where applicable). Where bearings (true or magnetic) are taken visually or by radar to fix a position, it should include more than two objects in order to provide a check on its accuracy. A position may also be defined by bearing and distance from a conspicuous object eg. beacon, lighthouse etc.
4. The note should include a tracing or a digital image of the chart used and the details should be clearly marked.
5. Echo sounders frequently register greater depths than the advertised maximum depth for the equipment, eg. a trace appearing at 50 metres may be in fact be 550 metres or even 1050 metres for equipment whose maximum depth is 500 metres. Erroneous depths caused by 2nd transmission error can usually be recognised by the following:
  - (a) the tracing being weaker than normal for the depth registered,
  - (b) the trace appearing to pass through the transmission line,
  - (c) the feathery nature of the trace.
6. An acknowledgement of receipt will be sent. When a Notice to Mariners is issued, the sender's vessel or name is quoted as the source unless the same information is also received in foreign Notices to Mariners.
7. Reports of shoals, uncharted dangers and defects in aids to navigation may also be made to the appropriate Singapore Port Operations Control Station on VHF Channels 10, 12, 14, 68 or 73.

**HYDROGRAPHIC NOTE**

To:

Chief Hydrographer  
Hydrographic Department  
Maritime and Port Authority of Singapore  
460 Alexandra Road #20-00 PSA Building  
Singapore 119963

Tel: (65) 63751550 or (65) 63751551  
Fax: (65) 62787646  
Email address: [hydrographic@mpa.gov.sg](mailto:hydrographic@mpa.gov.sg)

**Sender's Contact Details:**

Date: .....  
Name of Vessel: .....  
Address of Sender: .....  
Tel: . ..... Fax: .....  
Email Address: .....

**Nature of Observation:**

General Location: .....  
Subject: .....  
Position: Lat ..... Long .....  
Charts Used: .....  
Date & Time of Observation: .....  
Details: .....  
.....  
.....  
Attachment: .....

**Equipment Used:**

GPS / DGPS  
Type of Position Fixing: ..... Others: .....  
Type of Echo Sounder: .....

Name and Signature: .....

Ship' s / Company's stamp: .....