



SINGAPOREAN NOTICES TO MARINERS

CONTENT		Page
I	Index of Charts & Publications	147
II	New Publications	150
	Notices to Mariners and Chart Corrections	152
	Temporary and Preliminary Notices	156
III	Navigational Information	157
	Amendments to Publications	159
IV	Reprint of Radio Navigational Warnings	160
V	Reprint of Admiralty Notices to Mariners for Dual Badged Charts	161

The monthly Notices to Mariners contain corrective information affecting charts published by the Hydrographic Department, Maritime and Port Authority of Singapore. The information contained in these Notices should be updated on the charts affected. Notices under Section II apply only to the particular Singaporean Chart(s) indicated.

Mariners are requested to notify the Chief Hydrographer, Maritime and Port Authority of Singapore, immediately on the discovery of new dangers or suspected dangers to navigation and of changes or defects in aids to navigation. See Hydrographic Note on back page.

These notices can be accessed from the MPA webpage:

<http://www.mpa.gov.sg/infocentre/publications/noticesmari.htm>

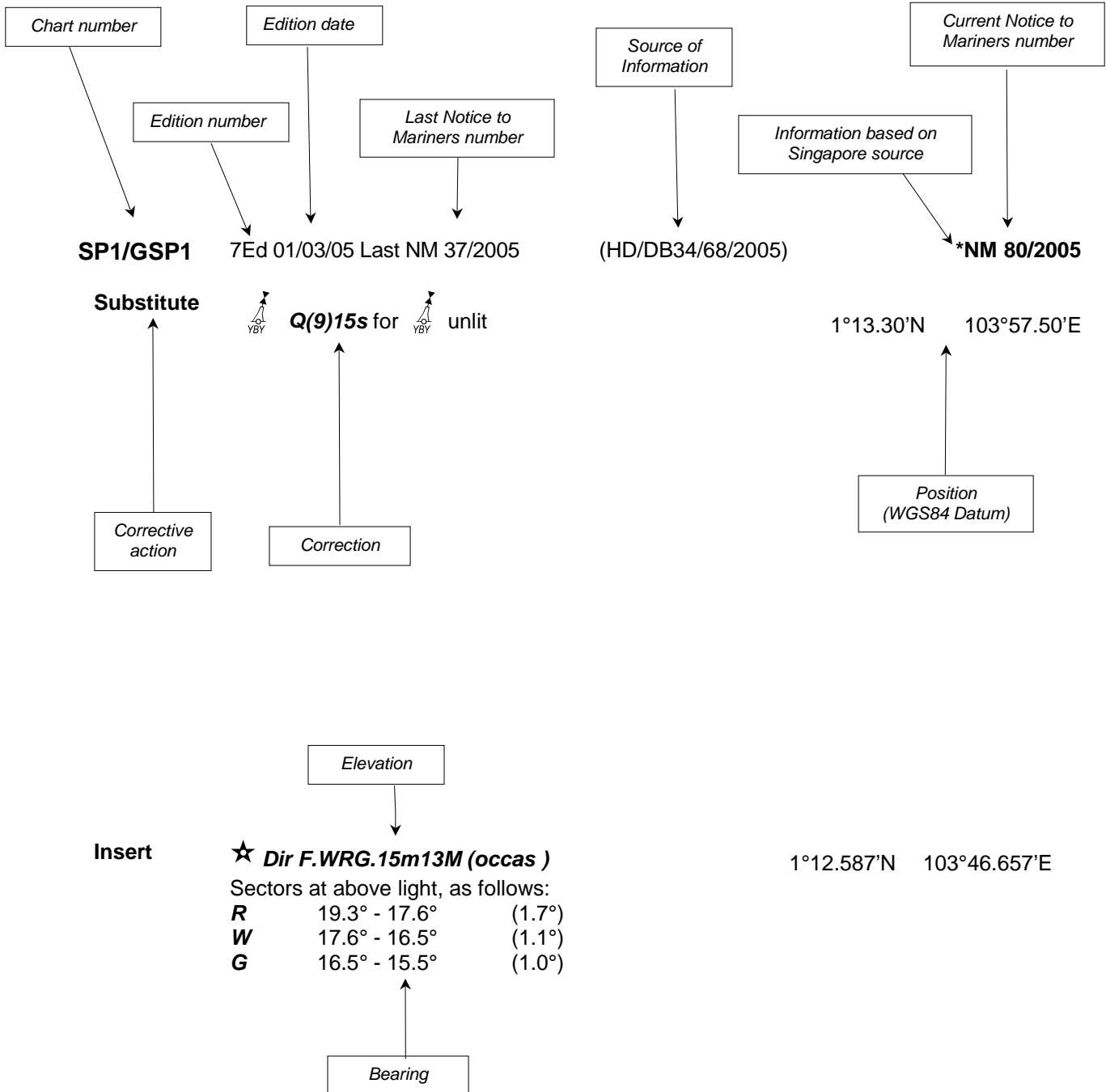
Copies of these notices can also be obtained free from the Hydrographic Department, Maritime and Port Authority of Singapore or from our Chart Agent, Motion Smith telephone number (65) 62205098.

Hydrographic Department
Maritime and Port Authority of Singapore
P.O. Box 313
PSA Building Post Office
Singapore 911141

Tel : (65) 6375 1550
Fax : (65) 6278 7646

EXPLANATION OF FORMAT

The elements of a typical chart correction are explained below.



Notes:

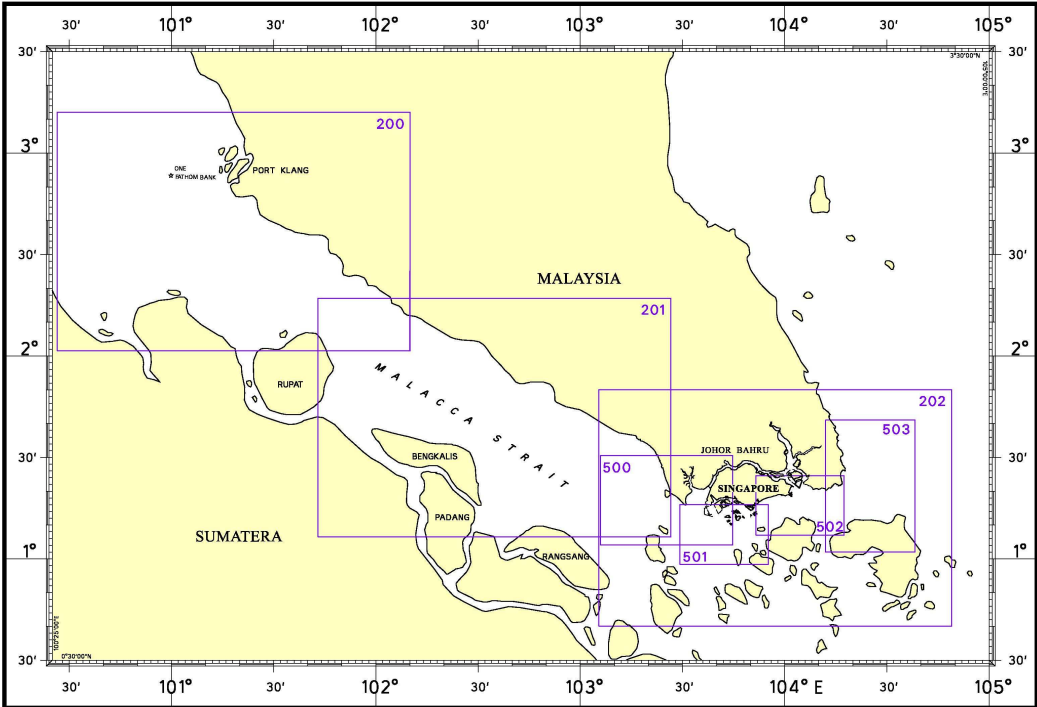
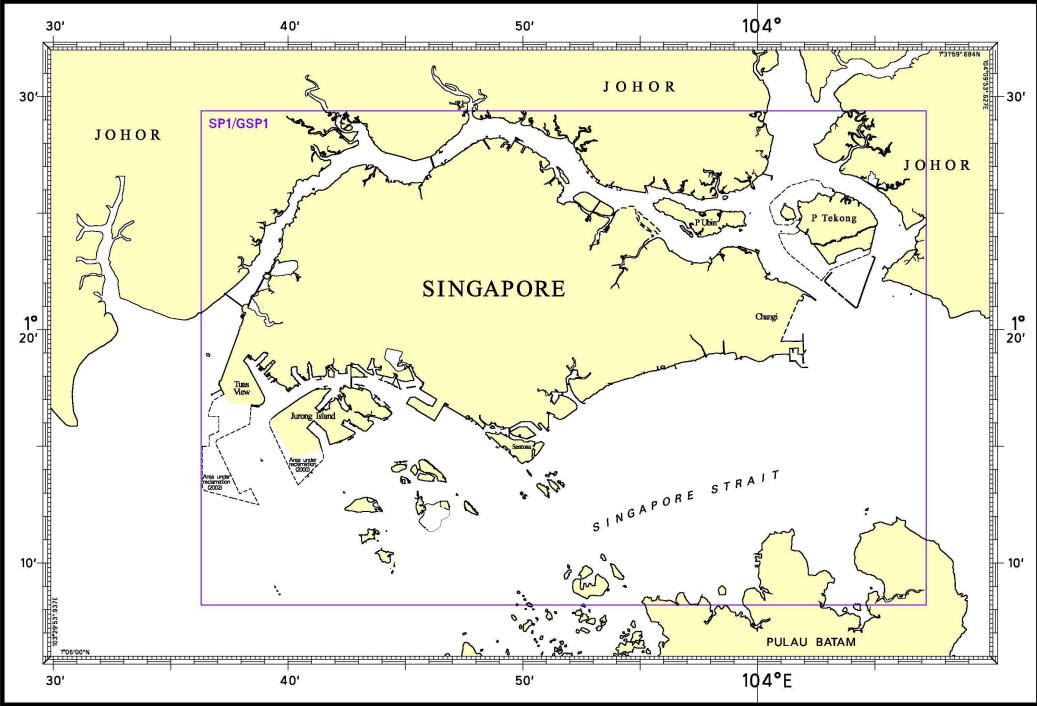
- a) Notice to Mariners number followed by:
 - T** indicates a Temporary Notice (eg. ***NM 80T/2005**).
 - P** indicates a Preliminary Notice (eg. ***NM 80P/2005**).
- b) Bearings are referred to True Compass in degrees clockwise from 000° to 359°. Bearings related to lights are from seaward.
- c) Heights and elevations are above Mean High Water Springs.

I

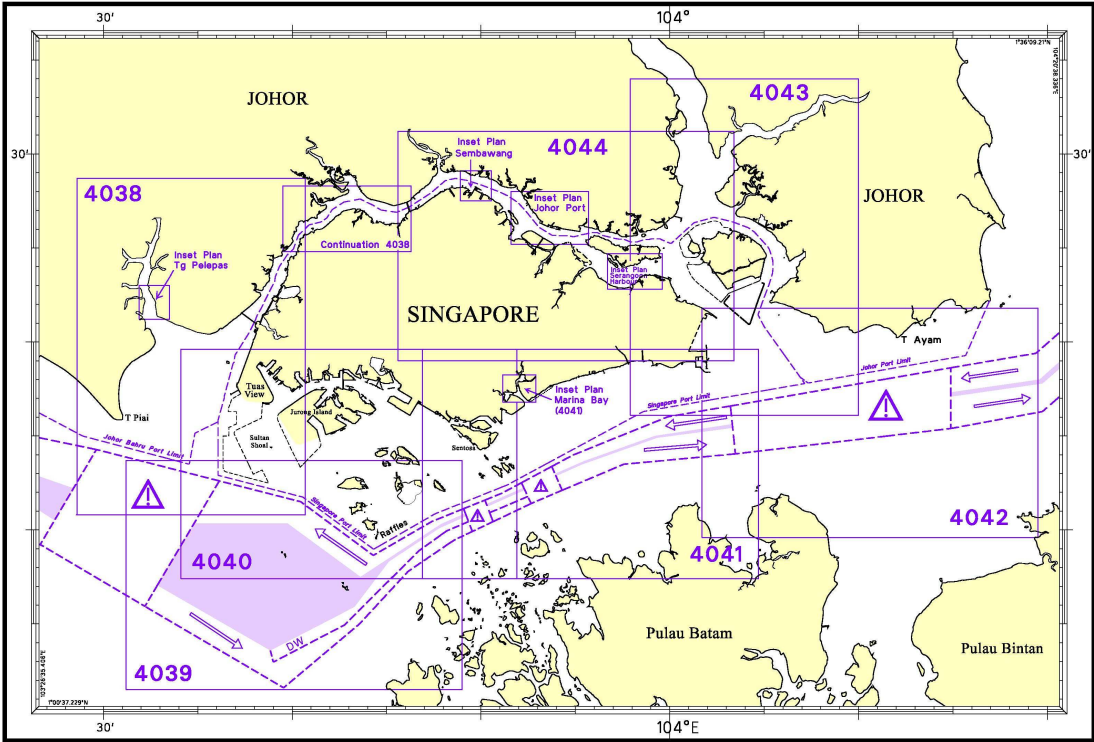
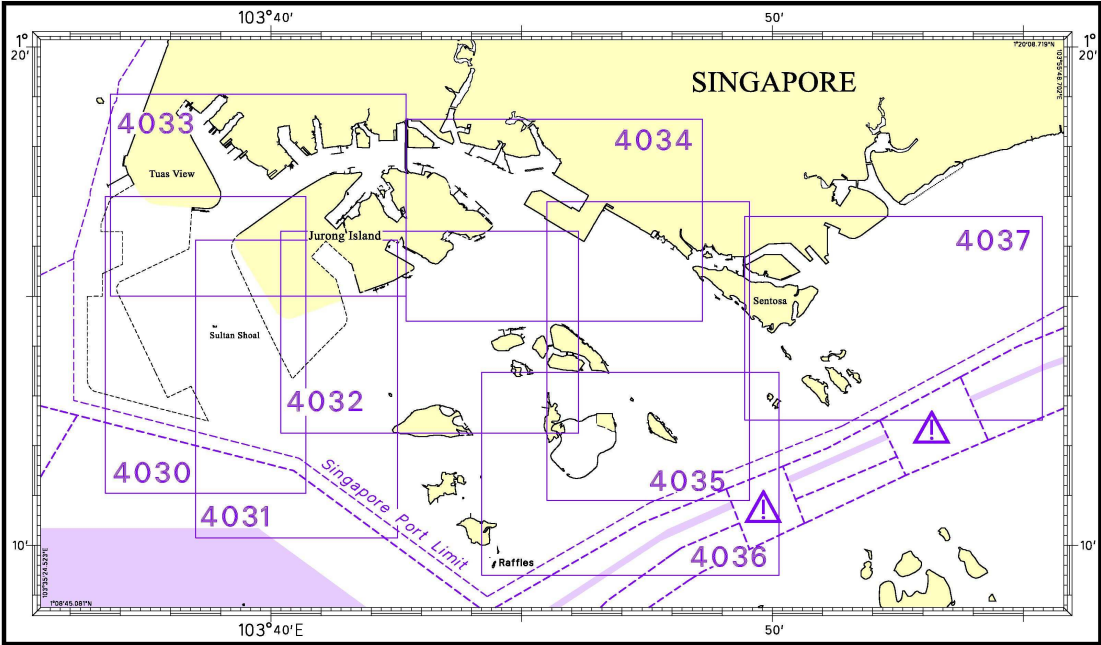
INDEX OF CHARTS AND PUBLICATIONS

NOTICES	DESCRIPTION	PAGE	NOTICES	DESCRIPTION	PAGE
	INDEX OF SINGAPOREAN CHARTS	148	105	202 501	154 155
	INDEX OF DUAL BADGED CHARTS	149	106	202 500	154 155
	New Publication "SINGAPORE PORT INFORMATION - 2006/2007 EDITION"	150	107T	SP1/GSP1 202 501	156 156 156
	New Editions SINGAPORE ELECTRONIC NAVIGATIONAL CHARTS	150	*108	Jetty Construction and Dredging works at Damar Laut Basin	157
	New Editions DUAL BADGED CHARTS	151	*109	Closure of Marina Channel and Revision of Port Limits and Pilotage District	158
*94	SP1/GSP1	152	*110	Updating of publication "SINGAPORE PORT INFORMATION - 2006/2007 EDITION"	159
95	200	152			
96	200 201	152 152			
97	200	152			
98	201	153			
99	202	153			
100	202	153			
101	202	153			
102	202 500	153 154			
103	202 500 501	153 154 155			
104	202 501	154 155			

I
INDEX OF CHARTS AND PUBLICATIONS
INDEX OF SINGAPOREAN CHARTS

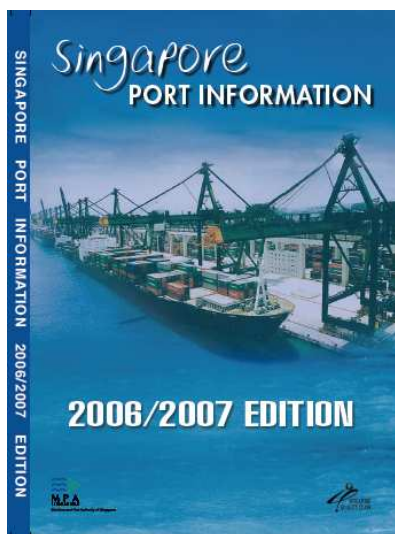


I
INDEX OF CHARTS AND PUBLICATIONS
INDEX OF DUAL BADGED CHARTS



II NEW PUBLICATIONS

NEW PUBLICATION



SINGAPORE PORT INFORMATION - 2006/2007 EDITION

Summary of Publication

This publication contains Port Information such as Routeing System in the Straits of Malacca and Singapore, important Port Marine Circulars and Notices issued by the Port Master, Characteristics of Aids to Navigation, Port Facilities, IALA Maritime Buoyage System and Chart Catalogues.

To Whom Will It Be Useful?

Mariners, shipping community, port users and other interested users.

Frequency/Year of Publication

Biennially

Cost of publication

The price of the publication is S\$15.60 (excluding Goods & Services Tax).

Order Enquires

Motion Smith : 76 Shenton Way #01-01
Singapore 079119
Tel : (65) 6220 5098
(After office hours:
Pager No. 9304 4156, 9304 4159)
Fax : (65) 6225 4902
E-mail : sales@motsmith.com
Website : <http://www.motsmith.com>

Remarks

Information provided in this publication is correct up to the time of printing based on data available at the Hydrographic Department, Maritime and Port Authority of Singapore.

Updates

Any updates to this publication which are critical to safe navigation will be promulgated through the monthly Singaporean Notices to Mariners. These notices can be accessed from MPA webpage:
" www.mpa.gov.sg/homepage/publications/noticesmari.htm".

NEW EDITIONS OF THE SINGAPORE ELECTRONIC NAVIGATIONAL CHARTS (ENC) COVERING DUAL BADGED CHARTS 4030, 4031, 4032 WILL BE RELEASED ON 10 AUG 2006 AND 4038 ON 17 AUG 2006.

For more information:

Please contact Ms Jenny Goh/Siti at Tel: 6375 1575/6 or visit our website:

<http://www.mpa.gov.sg/portdevelopment/services/enc.htm>

II NEW PUBLICATIONS

NEW EDITIONS DUAL BADGED CHARTS TO BE PUBLISHED IN AUGUST 2006

Chart No. : 4030
Title : Port of Singapore – West Jurong Anchorages and Temasek Fairway
Coverage : Lat 1° 11.05' N 1° 17.00' N
 Long 103° 36.70' E 103° 40.70' E
Scale : 1:10 000
Date Published : 10th August 2006
Remarks : This new edition includes new surveys covering Temasek Fairway and West Jurong Channel. This new edition supersedes the earlier edition published on 22 January 2004.

Chart No. : 4031
Title : Port of Singapore – Western Approaches to Jurong Island
Coverage : Lat 1° 10.15' N 1° 16.12' N
 Long 103° 38.50' E 103° 42.53' E
Scale : 1:10 000
Date Published : 10th August 2006
Remarks : This new edition includes new surveys covering Raffles Shoal, Selat Pauh, Southern Island Firing Area, Temasek Fairway, VLCC Jetties and Banyan Basin. This new edition supersedes the earlier edition published on 22 January 2004.

Chart No. : 4032
Title : Port of Singapore – Sinki Fairway
Coverage : Lat 1° 12.25' N 1° 16.30' N
 Long 103° 40.20' E 103° 46.13' E
Scale : 1:10 000
Date Published : 10th August 2006
Remarks : This new edition includes new surveys covering Selat Pauh, Southern Island Firing Area, VLCC Jetties, Banyan Basin and Selat Sinki. This new edition supersedes the earlier edition published on 22 January 2004.

Chart No. : 4038
Title : Malaysia and Singapore, Johor Strait, Western Part.
 Plan A, Town Reach (Scale 1:30 000)
 Plan B, Malaysia, Pelabuhan Tanjung Pelepas (Scale 1:15 000)
Coverage : Lat 1° 10.80' N 1° 28.70' N
 Long 103° 28.60' E 103° 40.70' E
Scale : 1:30 000
Date Published : 17th August 2006
Remarks : This new edition includes new surveys covering Temasek Fairway, Sinki Fairway and Raffles Shoal. A new Live Firing Area is also included. This new edition supersedes the earlier edition published on 17th November 2005.

Charts are available from : Motion Smith
 76 Shenton Way #01-01
 Singapore 079119
 Tel : (65) 6220 5098
 (After office hours, Pager No.9304 4156, 9304 4159).
 Fax : (65) 6225 4902
 Email : sales@motsmith.com
 Internet Website : <http://www.motsmith.com>

II
NOTICES TO MARINERS AND CHART CORRECTIONS

SP1/GSP1 8Ed 30/03/06 Last NM 83/2006 (HD/HE025/091/2006) ***NM 94/2006**

Insert



TS-01, Fl.Y.4s

1°16.58'N

103°38.82'E

200 2Ed 30/11/05 Last NM 64/2006 (Royal Malaysian Navy
MNM Edn 5/73/2006) **NM 95/2006**

Substitute

Depth **6₇** for **6₁**

2°42.00'N

101°00.50'E

Substitute

Depth **15₇** for **15₁**

2°44.00'N

101°16.40'E

Delete

Depth **5₈**

2°56.08'N

100°56.21'E

(Royal Malaysian Navy
MNM Edn 5/74/2006)

NM 96/2006

Insert



Fl(2)4s

2°19.00'N

101°57.00'E

Insert



Fl.G.10s

2°16.50'N

102°00.50'E

(Royal Malaysian Navy
MNM Edn 5/85/2006)

NM 97/2006

Insert



VQ(6)+LFl.10s

3°00.76'N

100°51.86'E

Delete



Fl.3s11m11M, Racon (T)

3°00.87'N

100°51.83'E

201 2Ed 15/09/03 Last NM 86/2006 (Royal Malaysian Navy
MNM Edn 5/74/2006) **NM 96/2006**

Insert



Fl.G.10s




2°16.50'N

102°00.50'E

II NOTICES TO MARINERS AND CHART CORRECTIONS

(Admiralty Notices 22/2463/2006)

NM 98/2006

Insert	 Obstn	1°35.80'N	102°46.50'E
Insert	 Fl(2)10s	1°35.97'N	102°46.07'E
Delete	 Panjang Utara, Fl(2) (Previous NM 11/95/2005 is superseded)	1°35.40'N	102°46.70'E

202 4Ed 15/11/04 Last NM 91/2006 (Indo/DISHIDROS/
BPI No.26-2006/196) **NM 99/2006**

Insert  **Fl.G.3s** 0°59.45'N 104°09.40'E

(Indo/DISHIDROS/
BPI No.26-2006/197)**NM 100/2006**

Insert  **Fl.R.2s** 1°01.15'N 104°08.33'E

(Indo/DISHIDROS/
BPI No.26-2006/198)**NM 101/2006**

Insert  **Fl.R.4s** 1°01.54'N 104°08.68'E

(Indo/DISHIDROS/
BPI No.27-2006/203)**NM 102/2006**

Substitute  **Fl.Y.3s** for  Fl.Y.3s 1°08.34'N 103°25.20'E

(Indo/DISHIDROS/
BPI No.28-2006/213)**NM 103/2006**


Insert  **Fl.Y.6s** 1°06.01'N 103°30.00'E

II NOTICES TO MARINERS AND CHART CORRECTIONS

(Indo/DISHIDROS/
BPI No.29-2006/228/1)


NM 104/2006


Insert  **Fl.Y.3s** 1°00.20'N 103°30.30'E

Delete  Fl.Y.3s 1°00.33'N 103°30.50'E
(Previous NM 7/88/2006 is superseded)

(Indo/DISHIDROS/
BPI No.29-2006/228/2)

NM 105/2006


Insert  **Fl.Y.3s** 1°03.03'N 103°32.05'E

Delete  Fl.Y.3s 1°03.05'N 103°32.08'E
(Previous NM 7/89/2006 is superseded)


(Indo/DISHIDROS/
BPI No.29-2006/228/3)

NM 106/2006

Insert  **Fl.Y.2s** 1°06.22'N 103°24.28'E

Delete  Fl.Y.2s 1°06.37'N 103°24.47'E
(Previous NM 7/90/2006 is superseded)

500 4Ed 15/08/05 Last NM 90/2006 (Indo/DISHIDROS/
BPI No.27-2006/203) **NM 102/2006**

Substitute  **Fl.Y.3s** for  Fl.Y.3s 1°08.34'N 103°25.20'E

(Indo/DISHIDROS/
BPI No.28-2006/213)

NM103/2006


Insert  **Fl.Y.6s5M** 1°06.01'N 103°30.00'E

II
NOTICES TO MARINERS AND CHART CORRECTIONS

(Indo/DISHIDROS/
BPI No.29-2006/228/3)

NM 106/2006

Insert  **FI.Y.2s5M** 1°06.22'N 103°24.28'E

Delete  FI.Y.2s5M 1°06.37'N 103°24.47'E
(Previous NM 7/90/2006 is superseded)

501 3Ed 15/09/03 Last NM 89/2006

(Indo/DISHIDROS/
BPI No.28-2006/213)


NM 103/2006

Insert  **FI.Y.6s5M** 1°06.01'N 103°30.00'E

(Indo/DISHIDROS/
BPI No.29-2006/228/1)

NM 104/2006


Insert  **FI.Y.3s5M** 1°00.20'N 103°30.30'E

Delete  FI.Y.3s5M 1°00.33'N 103°30.50'E
(Previous NM 7/88/2006 is superseded)

(Indo/DISHIDROS/
BPI No.29-2006/228/2)

NM 105/2006

Insert  **FI.Y.3s5M** 1°03.03'N 103°32.05'E

Delete  FI.Y.3s5M 1°03.05'N 103°32.08'E
(Previous NM 7/89/2006 is superseded)

II
TEMPORARY AND PRELIMINARY NOTICES

SP1/GSP1	8Ed 30/03/06	(Indo/DISHIDROS/ BPI No.26-2006/199T)	NM 107T/2006
-----------------	--------------	--	---------------------

Insert	Legend (Missing) against No.4, Yellow Light Buoy	1°09.80'N	103°51.08'E
---------------	---	-----------	-------------

202	4Ed 15/11/04	(Indo/DISHIDROS/ BPI No.26-2006/199T)	NM 107T/2006
------------	--------------	--	---------------------

Insert	Legend (Missing) against No.4, Yellow Light Buoy	1°09.80'N	103°51.08'E
---------------	---	-----------	-------------

501	3Ed 15/09/03	(Indo/DISHIDROS/ BPI No.26-2006/199T)	NM 107T/2006
------------	--------------	--	---------------------

Insert	Legend (Missing) against No.4, Yellow Light Buoy	1°09.80'N	103°51.08'E
---------------	---	-----------	-------------

III NAVIGATIONAL INFORMATION

* (NM 108/2006) JETTY CONSTRUCTION AND DREDGING WORKS AT DAMAR LAUT BASIN

Applicable to : Mariners operating in Damar Laut Basin.

Date : With effect from 19 June 2006 to 18 December 2006

Location : Damar Laut Basin, within a working area for dredging and jetty construction works bounded by the following co-ordinates (please see plan attached):

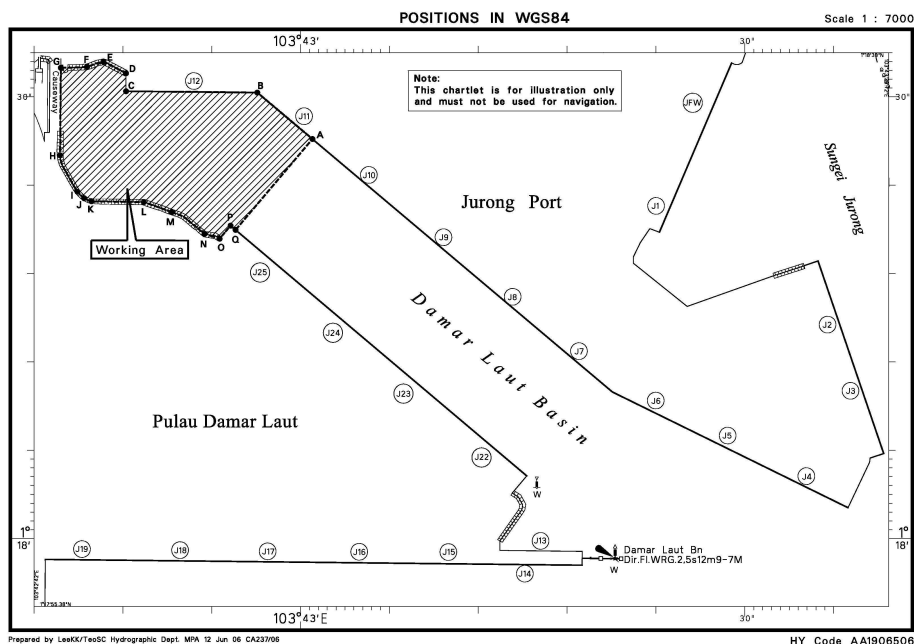
Working Area

WGS 84 Datum

<u>Point</u>	<u>Latitude (N)</u>	<u>Longitude (E)</u>
A	01°18.452'	103°43.013'
B	01°18.504'	103°42.951'
C	01°18.506'	103°42.803'
D	01°18.526'	103°42.803'
E	01°18.539'	103°42.778'
F	01°18.534'	103°42.759'
G	01°18.532'	103°42.730'
H	01°18.433'	103°42.729'
I	01°18.392'	103°42.748'
J	01°18.385'	103°42.756'
K	01°18.381'	103°42.764'
L	01°18.380'	103°42.823'
M	01°18.369'	103°42.855'
N	01°18.344'	103°42.891'
O	01°18.339'	103°42.908'
P	01°18.354'	103°42.921'
Q	01°18.349'	103°42.926'

Working Hours : 24 hours daily including Sundays and Public Holidays.

Source : Port Marine Notice No. 80 of 2006 dated 16 June 2006.



III NAVIGATIONAL INFORMATION

*(NM 109/2006) CLOSURE OF MARINA CHANNEL TO MARINE TRAFFIC AND REVISION OF PORT LIMITS AND PILOTAGE DISTRICT

1. Due to the construction of the Marina Barrage at the mouth of the Marina Channel, the Singapore Port Limits and Pilotage District have been revised, The new port limits, set out in the Maritime and Port Authority (Port Limits) Notification 2006 and the new pilotage district, set out in the Maritime and Port Authority (Pilotage District) Notification 2006, shall come into operation on 1 July 2006. The gazette notifications are attached to this Notice.

2. The waters of Marina Channel, Marina Bay, Kallang Basin and the connected rivers will no longer form part of the port limits and pilotage district. Instead they will be managed by the Public Utilities Board (PUB) with effect from 1 July 2006.

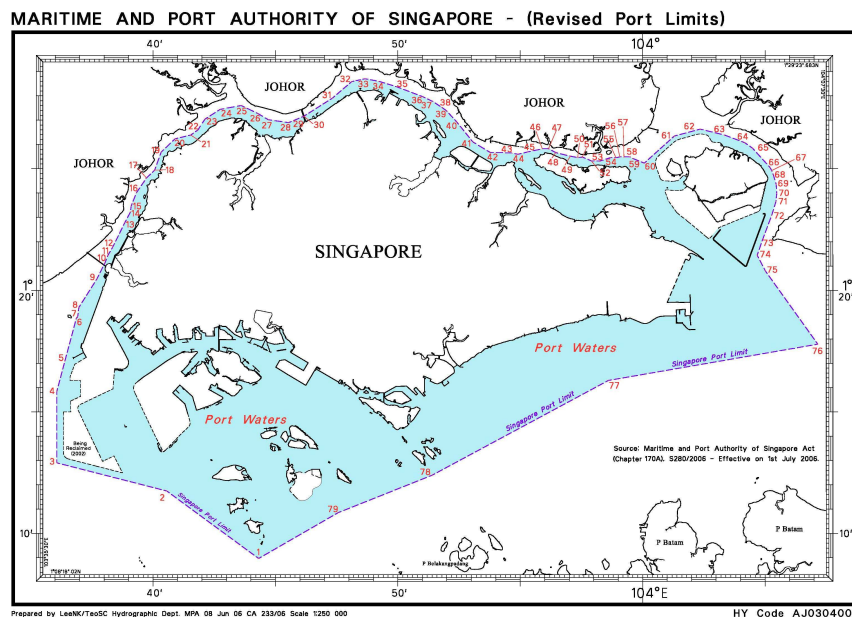
3. As part of the construction of the Marina Barrage, Marina Channel will be closed to marine traffic with effect from 01 July 06. Any vessel to enter Marina Reservoir can refer to PUB's webpage (www.pub.gov.sg/Marina Barrage) for more information or approach the following PUB officers for any assistance:

Thoo Jung Chee (Mr)	Email: thoo_jung_chee@pub.gov.sg	DID 6731 3104
Gan Gim Kiong (Mr)	Email: gan_gim_kiong@pub.gov.sg	DID 6731 9933
Peng Cheng Yao (Ms)	Email: peng_cheng_yao@pub.gov.sg	DID 6731 9988
PUB's call centre (24hrs)	1800-2846600	

4. Craft plying within the Marina Reservoir can contact PUB at 928 1398 or call centre in case of any emergencies.

5. This notice supersedes Port Marine Notice No 85 of 2006.

Source : Port Marine Notice No. 89 of 2006 dated 28 June 2006.



III
AMENDMENTS TO PUBLICATIONS

***(NM 110/2006) UPDATING OF PUBLICATION “SINGAPORE PORT INFORMATION 2006/2007 EDITION”**

1 Page 147 - Item 7

PASIR PANJANG TERMINAL (PSA Corporation Ltd) (1°17.2'N, 103°46.1'E)

	Delete	<i>Insert</i>
Berth	Depth Alongside (Year Surveyed)	Depth Alongside (Year Surveyed)
P04	14.8m (2005)	14.8m (2006)
P06	15.3m (1998)	15.0m (2006)

Source: HD/HY Code C00103506

2 Page 115 – WEST JURONG CHANNEL

Insert the following:

Name of Beacon / Buoy	Position Lat. N Long. E Deg Min	Structure Colour & Shape	Light Characteristic	Owner
TS-01	01 16.580 103 38.820	Yellow pillar	Fl.Y.4s	MPA

Source: HD/HE025/091/2006

IV
REPRINT OF RADIO NAVIGATIONAL WARNINGS

Nil

V
REPRINT OF ADMIRALTY NOTICES TO MARINERS
FOR DUAL BADGED CHARTS

3145/06 SINGAPORE — West Jurong Channel and Temasek Fairway — Depths.

Source: Maritime and Port Authority of Singapore

Chart 4030 [previous update 1421/06] WGS84 DATUM

Insert	depth 10_3	$1^{\circ} 16' \cdot 600N. , 103^{\circ} 39' \cdot 660E.$
	depth 14_5 enclosed by 15m contour	$1^{\circ} 16' \cdot 185N. , 103^{\circ} 38' \cdot 482E.$
	depth 11_5 and extend 15m contour SW to enclose	(a) $1^{\circ} 15' \cdot 389N. , 103^{\circ} 39' \cdot 412E.$
	depth 10_6	$1^{\circ} 16' \cdot 599N. , 103^{\circ} 38' \cdot 822E.$
	depth 11_6	$1^{\circ} 16' \cdot 500N. , 103^{\circ} 38' \cdot 800E.$
Delete	depth 14_8 , close NE of:	(a) above

Chart 4031 [previous update 2602/06] WGS84 DATUM

Insert	depth 11_5 and extend 15m contour SW to enclose	(a) $1^{\circ} 15' \cdot 389N. , 103^{\circ} 39' \cdot 412E.$
Delete	depth 14_8 , close NE of:	(a) above

Chart 4040 [previous update 2604/06] WGS84 DATUM

Insert	depth 14_5 enclosed by 15m contour	(a) $1^{\circ} 16' \cdot 185N. , 103^{\circ} 38' \cdot 482E.$
	depth 11_5 and extend 15m contour to enclose	(b) $1^{\circ} 15' \cdot 389N. , 103^{\circ} 39' \cdot 412E.$
	depth 10_6	$1^{\circ} 16' \cdot 599N. , 103^{\circ} 38' \cdot 822E.$
	depth 11_6	(c) $1^{\circ} 16' \cdot 500N. , 103^{\circ} 38' \cdot 800E.$
Delete	depth 15_8 , close SW of:	(a) above
	depth 14_8 , close NE of:	(b) above
	depth 12_7 , close S of:	(c) above

Chart 4038 [previous update 509/06] WGS84 DATUM

Insert	depth 14_5 enclosed by 15m contour	(a) $1^{\circ} 16' \cdot 185N. , 103^{\circ} 38' \cdot 482E.$
	depth 11_5 and extend 15m contour to enclose	(b) $1^{\circ} 15' \cdot 389N. , 103^{\circ} 39' \cdot 412E.$
	depth 10_6	$1^{\circ} 16' \cdot 599N. , 103^{\circ} 38' \cdot 822E.$
	depth 11_6	(c) $1^{\circ} 16' \cdot 500N. , 103^{\circ} 38' \cdot 800E.$
Delete	depth 15_8 , close SW of:	(a) above
	depth 14_8 , close NE of:	(b) above
	depth 12_7 , close S of:	(c) above

V
REPRINT OF ADMIRALTY NOTICES TO MARINERS
FOR DUAL BADGED CHARTS

3146/06 * SINGAPORE — Pasir Panjang Terminal — Dredged depths. Dredged area. Legend. Berth.

Source: Maritime and Port Authority of Singapore DBNM's 24, 25, 30, 31 & 33/06

Chart 4034 [previous update 2604/06] WGS84 DATUM

Insert	limit of dredged area, pecked line, joining:	(a) 1° 16' .790N. , 103° 46' .000E. (b) 1° 16' .818N. , 103° 46' .014E. (c) 1° 16' .739N. , 103° 46' .146E. (existing limit) (d) 1° 16' .700N. , 103° 46' .148E. (shore)
	legend, 14.3m (2006), centred on: berth number, P07	1° 16' .765N. , 103° 46' .070E. 1° 16' .727N. , 103° 46' .063E.
Amend	legend to, 15.0m (2005), centred on:	1° 17' .360N. , 103° 45' .744E. 1° 17' .160N. , 103° 46' .082E.
	legend to, 15.1m (2005), centred on:	1° 16' .928N. , 103° 46' .270E.
	legend to, 14.8m (2005), centred on:	1° 17' .259N. , 103° 45' .914E. 1° 17' .061N. , 103° 46' .247E.
Delete	limit of dredged area, pecked line, joining:	(c) above
	charted detail within:	1° 16' .710N. , 103° 46' .128E. (shore) (a)-(d) above

3147/06 * SINGAPORE — Selat Sinki — Pulau Bukom Northwards — Rock.

Source: Maritime and Port Authority of Singapore DBNM 29/06

Chart 4032 [previous update 2604/06] WGS84 DATUM


Substitute	 (54) for  (55)	1° 14' .492N. , 103° 45' .600E.
------------	---	---------------------------------

Chart 4035 [previous update 2604/06] WGS84 DATUM

Substitute	 (54) for  (55)	1° 14' .492N. , 103° 45' .600E.
------------	---	---------------------------------

Chart 4040 [previous update 3145/06] WGS84 DATUM

Insert	 (54)	(a) 1° 14' .49N. , 103° 45' .60E.
Delete	 (57), close SW of:	(a) above

V
REPRINT OF ADMIRALTY NOTICES TO MARINERS
FOR DUAL BADGED CHARTS

3148/06 * SINGAPORE — Selat Sinki — Cyrene Reefs South-westwards — Obstructions. Depth.

Source: Maritime and Port Authority of Singapore DBNM 28/06

Chart 4032 [previous update 3147/06] WGS84 DATUM

Substitute  *Obstn* for depth *11*₅ 1° 15' ·126N. , 103° 44' ·411E.

Chart 4034 [previous update 3146/06] WGS84 DATUM


Substitute  *Obstn* for depth *11*₅ 1° 15' ·126N. , 103° 44' ·411E.

Chart 4040 [previous update 3147/06] WGS84 DATUM

Insert  *Obstn* (a) 1° 15' ·13N. , 103° 44' ·41E.

Delete  *Obstn*, close N of: (a) above

3257/06 * SINGAPORE — Singapore Island — Marina South Southwards — Depth.

Source: Maritime and Port Authority of Singapore

Chart 4040 [previous update 3148/06] WGS84 DATUM

Insert  with seabed character, *R* 1° 15' ·93N. , 103° 51' ·87E.

Chart 4041 [previous update 3122/06] WGS84 DATUM

Insert  with seabed character, *R* 1° 15' ·93N. , 103° 51' ·87E.

3351/06 SINGAPORE STRAIT — Main Strait — Pulau Tolop Northwards — Buoy.

Source: Indonesian Notice 23/175/06

Chart 4040 [previous update 3257/06] WGS84 DATUM

Move  *FL.Y.3s No3* from: 1° 10' ·60N. , 103° 51' ·70E.
to: 1° 10' ·50N. , 103° 51' ·67E.

Chart 4041 [previous update 3257/06] WGS84 DATUM

Move  *FL.Y.3s No3* from: 1° 10' ·60N. , 103° 51' ·70E.
to: 1° 10' ·50N. , 103° 51' ·67E.

MPA ELECTRONIC NAVIGATIONAL CHARTS (ENC) DISTRIBUTORS

Please approach any of the appointed distributors to purchase the Singapore ENC.

PERSON TO CONTACT	ADDRESS	TELEPHONE/FAX NO./EMAIL/WEBSITE
Mr Chong Chee Meng General Manager	DPM (Singapore) Pte Ltd 1 Maritime Square, #09-72 Harbour Front Centre, Singapore 099253	Tel. No.: +65 6270 4060 Fax No.: +65 6276 3858 Email: sales@dpmsingapore.com.sg Website: http://www.dpmsingapore.com.sg
Ms Shirley Koh	Kelvin Hughes(S) Pte Ltd 8 Pandan Avenue #02-00, Singapore 609384	Tel. No.: +65 6545 9880 ext.12 Fax No.: +65 6545 8892 Email: shirley.koh@khsing.com Website: http://www.kelvinhughes.co.uk
Mr Philip Loh Sales Manager	Motion Smith 76 Shenton Way #01-01, Singapore 079119	Tel. No.: +65 6220 5098 Fax No.: +65 6225 4902 Email: sales@motsmith.com Website: http://www.motsmith.com
Mr Choy Kum Weng Manager	Vector Services Pte Ltd 2 Maritime Square #04-12B SPI Building, Singapore 099255	Tel. No.: +65 6278 7212 Fax No.: +65 6278 7212 Email: kwchoy@pacific.net.sg
Mr Looi Keen Wai Regional Sales Manager	Transas Marine Pacific Pte Ltd 750C Chai Chee Road, Technopark@Chai Chee, #04-07 Singapore 469003	Tel. No.: +65 6443 3061 Fax No.: +65 6443 3025 Email: looi@transas.com.sg Website: www.transas.com.sg
Mr George Arts President	Marine Press of Canada 640 Rue St-Paul Ouest, Suite 300 Montreal (QC) Canada, H3C1L9	Tel. No.: (514) 866-8342 Fax No.: (514) 866-9050 Email: sales@marinepress.com Website: www.marinepress.com
Mr Thomas Wilde Superintendent	HanseNautic GmbH Bade & Hornig, Eckardt & Messtorff Herrengarten 31 D-20459 Hamburg, Germany	Tel. No.: +49 40 374 811-32 Fax No.: +49 40 366 400 Email: info@HanseNautic.com Website: http://www.HanseNautic.com
Mr Daniel Schwarzwaelder Sales Manager	SevenCs AG + Co. KG Ruhrstrasse 90, D-22761 Hamburg, Germany	Tel. No.: +49 40 853 58 6940 Fax No.: +49 40 853 58 6949 Email: sales@chartworld.com Website: http://www.sevencs.com
Mr K. Shimiz ENC Manager	Japan Hydrographic Association ENC Service Division 5-3-3 Tsukiji, Chuo-ku Tokyo 104-0045, Japan	Tel. No.: +81 3 3543 0752 Fax No.: +81 3 3543 0695 Email: enc-support@jha.jp Website: http://www.jha.jp.com
Mr Jester-Kim Foreign Business Department Manager	E_MLX Co. Ltd Ssangyong Research No.2 Lab Sinseong-Dong 100 Yusong-Gu, Daejeon 305-804, Korea (ROK)	Tel. No.: +82 42 865 1893 Fax No.: +82 42 865 1884 Email: Jester-kim@emlx.co.kr
Mr C G Kim	Korean Ocean Development Co. Ltd 2ND Fl, Dongbang Bldg, 25-4, 4 Ga Jungang-Dong, Jung-Gu, Busan, South Korea	Tel. No.: +82 514 66 0760 Fax No.: +82 514 65 9345 Email: sales@chartkorea.com Website: http://chartkorea.com
Mr Kjell Nodland	C-Map Norway A/S P.O Box 212 , N-4371 Egersund, Norway	Tel No.: +47 514 64 700 Fax No: +47 514 64 701 Email: market@c-map.no Website: http://www.c-map.no

Ms Marianne Barstad	PRIMAR STAVANGER Lervigsveien 36, P.O Box 60, N-4001 Stavanger, Norway	Tel. No.: +47 51 93 9500 Fax No.: +47 51 93 9501 Email: sales@primar.org Website: http://www.primar-stavanger.org
Mr Roar Moe International Marketing Coordinator	Maritime Information System AS (MARIS) Danholmen 25, No.3115 Tonsberg, Norway	Tel. No.: +47 33 30 42 50 Fax No.: +47 33 30 42 51 Email: roar.moe@maris.no Website: http://www.maris.no
Mr Andy Criddle Regional Sales Manager	United Kingdom Hydrographic Office Admiralty Way, Taunton, Somerset TA1 2DN United Kingdom	Tel. No.: +44 (0)1823 337900 Fax No.: +44 (0)1823 284077 Email: vargroup@ukho.gov.uk & andrew.criddle@ukho.gov.uk Website: www.ukho.gov.uk

CHART AGENT FOR MARITIME AND PORT AUTHORITY OF SINGAPORE (MPA) PUBLICATIONS

Agent's name : Motion Smith
Address : 76 Shenton Way # 01-01
Singapore 079119
Telephone : (65) 6220 5098
: (After Office hours: Pager No. 9304 4156, 9304 4159)
Fax No. : (65) 6225 4902
E-mail : sales@motsmith.com
Website : <http://www.motsmith.com>

HYDROGRAPHIC NOTE - Instructions

1. Mariners are requested to notify the Chief Hydrographer, Maritime and Port Authority of Singapore, when new or suspected dangers to navigation are discovered, changes are observed in aids to navigation or where corrections to nautical publications may be necessary. Reports which cannot be confirmed or are lacking in certain details should not be withheld.
2. Any ambiguities of time, positioning and depth should be stressed and any firm expectation of being able to check the information provided on a following voyage should be mentioned.
3. Mariners using satellite position fixing systems, eg. GPS, should provide details of equipment and datum used (where applicable). Where bearings (true or magnetic) are taken visually or by radar to fix a position, it should include more than two objects in order to provide a check on its accuracy. A position may also be defined by bearing and distance from a conspicuous object eg. beacon, lighthouse etc.
4. The note should include a tracing or a digital image of the chart used and the details should be clearly marked.
5. Echo sounders frequently register greater depths than the advertised maximum depth for the equipment, eg. a trace appearing at 50 metres may be in fact be 550 metres or even 1050 metres for equipment whose maximum depth is 500 metres. Erroneous depths caused by 2nd transmission error can usually be recognised by the following:
 - (a) the tracing being weaker than normal for the depth registered,
 - (b) the trace appearing to pass through the transmission line,
 - (c) the feathery nature of the trace.
6. An acknowledgement of receipt will be sent. When a Notice to Mariners is issued, the sender's vessel or name is quoted as the source unless the same information is also received in foreign Notices to Mariners.
7. Reports of shoals, uncharted dangers and defects in aids to navigation may also be made to the appropriate Singapore Port Operations Control Station on VHF Channels 10, 12, 14, 68 or 73.

HYDROGRAPHIC NOTE

To:

Chief Hydrographer
Hydrographic Department
Maritime and Port Authority of Singapore
460 Alexandra Road #20-00 PSA Building
Singapore 119963

Tel : (65) 6375 1550 or (65) 6375 1551
Fax : (65) 6278 7646
Email : hydrographic@mpa.gov.sg

Sender's Contact Details :

Date :

Name of Vessel :

Address of Sender :

Tel : Fax :

Email :

Nature of Observation :

General Location :

Subject :

Position : Lat. Long.

Charts Used :

Date & Time of Observation :

Details :

.....

.....

Attachment :

Equipment Used :

Type of Position Fixing : GPS / DGPS Others :

Type of Echo Sounder :

Name and Signature :

Ship's / Company's tamp :