



## SINGAPOREAN NOTICES TO MARINERS

---

	<b>CONTENT</b>	<b>Page</b>
I	Index of Charts & Publications	143
II	New Publications	146
	Notices to Mariners and Chart Corrections	148
	Temporary and Preliminary Notices	150
III	Navigational Information	151
	Amendments to Publications	152
IV	Reprint of Radio Navigational Warnings	155
V	Reprint of Admiralty Notices to Mariners for Dual Badged Charts	156

---

The monthly Notices to Mariners contain corrective information affecting charts published by the Hydrographic Department, Maritime and Port Authority of Singapore. The information contained in these Notices should be updated on the charts affected. Notices under Section II apply only to the particular Singaporean Chart(s) indicated.

---

Mariners are requested to notify the Chief Hydrographer, Maritime and Port Authority of Singapore, immediately on the discovery of new dangers or suspected dangers to navigation and of changes or defects in aids to navigation. See Hydrographic Note on back page.

The monthly Singaporean Notices to Mariners can be accessed directly from the MPA website:

<http://www.mpa.gov.sg/> > Circulars & Notices > Singaporean NTM

or

<http://www.mpa.gov.sg/infocentre/publications/noticesmari.htm>

This service is offered free of charge.

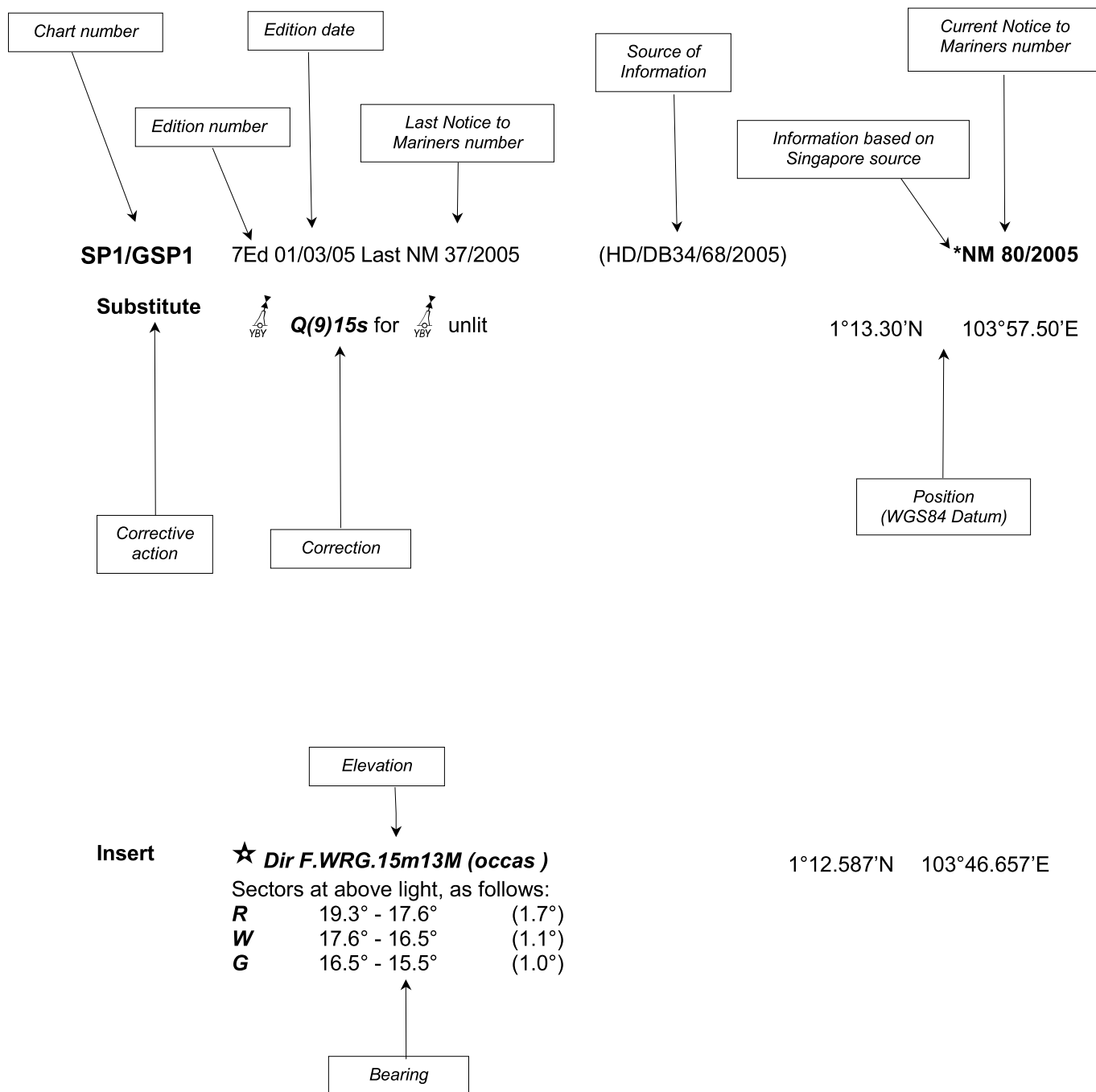
Hydrographic Department  
Maritime and Port Authority of Singapore  
460 Alexandra Road PSA Building #20-00  
Singapore 119963

Tel : (65) 6375 1227

Fax : (65) 6278 7646

## EXPLANATION OF FORMAT

The elements of a typical chart correction are explained below.



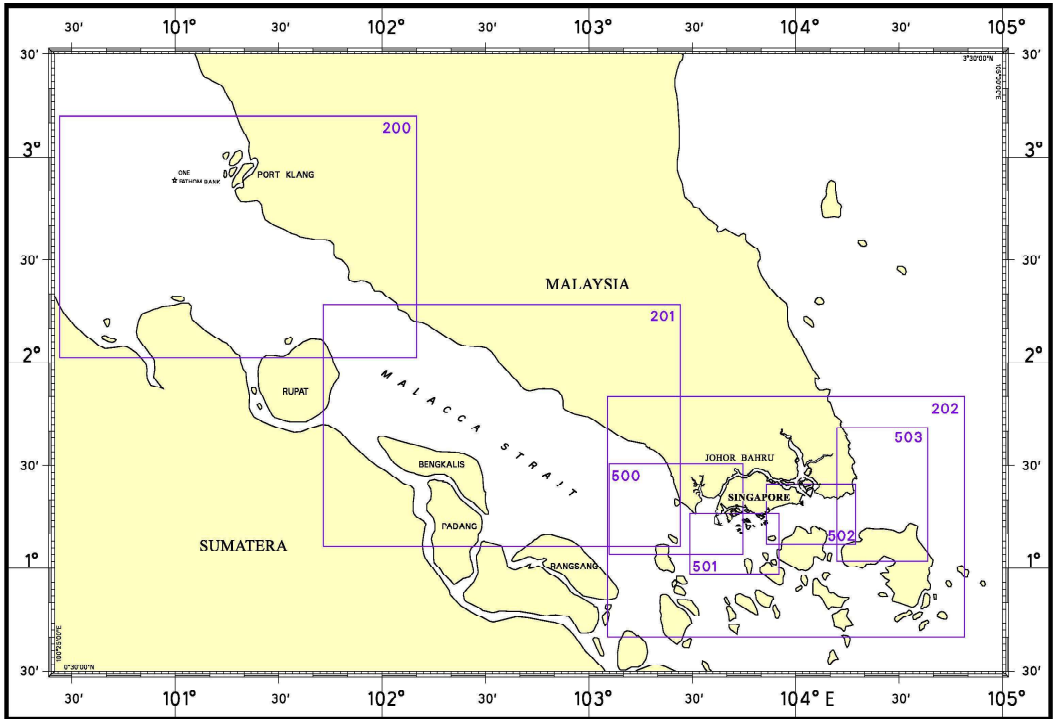
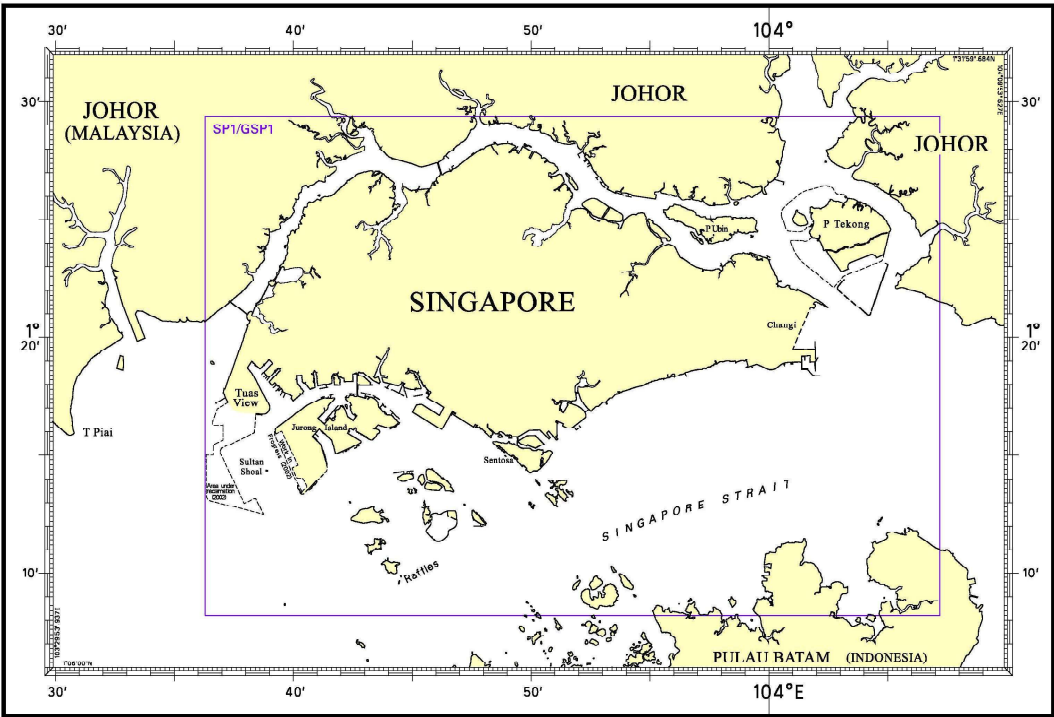
**Notes:**

- a) Notice to Mariners number followed by:
  - T** indicates a Temporary Notice (eg. **\*NM 80T/2005**).
  - P** indicates a Preliminary Notice (eg. **\*NM 80P/2005**).
- b) Bearings are referred to True Compass in degrees clockwise from 000° to 359°. Bearings related to lights are from seaward.
- c) Heights and elevations are above Mean High Water Springs.

I  
INDEX OF CHARTS AND PUBLICATIONS

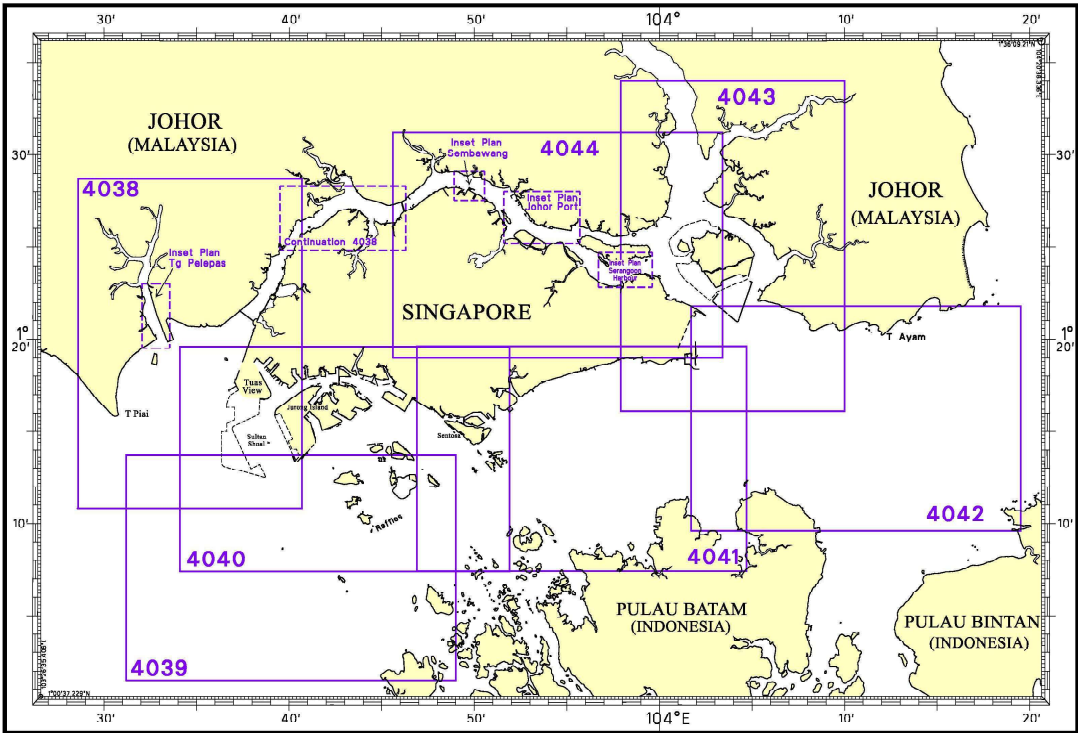
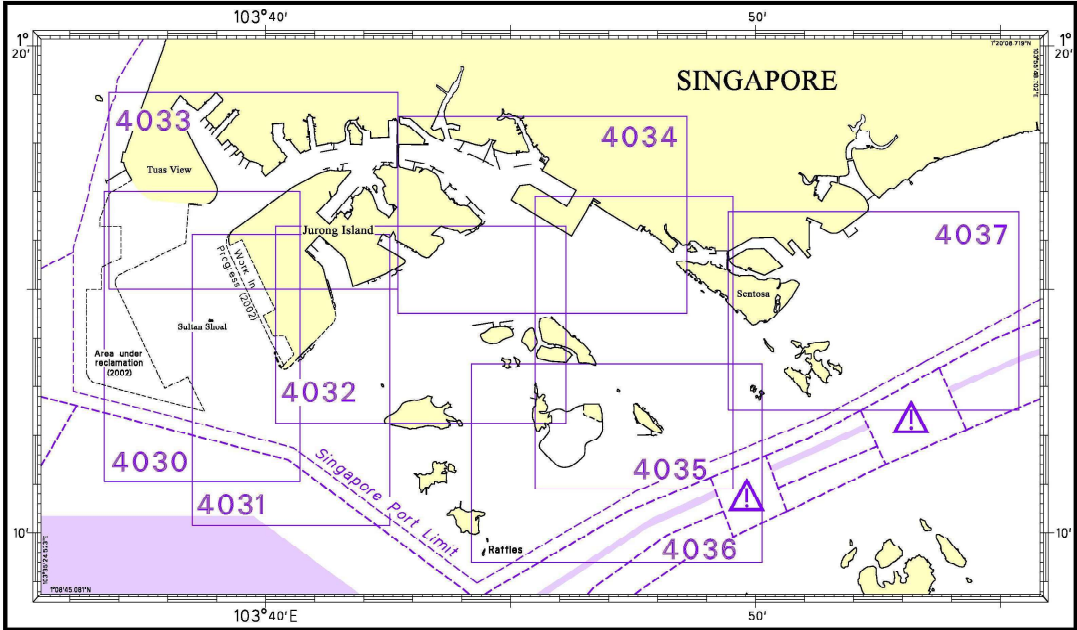
NOTICES	DESCRIPTION	PAGE	NOTICES	DESCRIPTION	PAGE
	INDEX OF SINGAPOREAN CHARTS	144			
	INDEX OF DUAL BADGED CHARTS	145			
	New Edition SINGAPOREAN CHARTS	146			
	New Edition DUAL BADGED CHARTS	147			
*64	SP1/GSP1	148			
*65	SP1/GSP1	148			
*66	SP1/GSP1	148			
*67	SP1/GSP1	148			
*68	SP1/GSP1	148			
*69	SP1/GSP1	148			
*70	SP1/GSP1	148			
*71	SP1/GSP1	149			
72	200	149			
73	202	149			
*74T	SP1/GSP1	150			
*75	Port Marine Notices	151			
*76	Updating of Publication "SINGAPORE PORT INFORMATION 2006/2007 EDITION"	152			

I  
**INDEX OF CHARTS AND PUBLICATIONS**  
INDEX OF SINGAPOREAN CHARTS



Notes:  
Updated SINGAPOREAN Charts (excluding Charts SP1/GSP1 and 503) are available through our Print On Demand (POD) chart service and can be purchased from our authorised Chart Agents:  
Motion Smith and Hong Yunn Sea Professional Co., Ltd.

I  
**INDEX OF CHARTS AND PUBLICATIONS**  
INDEX OF DUAL BADGED CHARTS



## II NEW PUBLICATIONS

### NEW EDITION SINGAPOREAN CHARTS PUBLISHED ON 19 JULY 2007

**Chart No.** : SP1  
**Title** : Anchorages and Aids to Navigation  
**Coverage** : Lat 1° 08.20' N 1° 29.40' N  
               Long 103° 36.10' E 104° 07.20' E  
**Scale** : 1 : 60 000  
**Date Published** : 19 July 2007  
**Size of chart** : 973.9 x 651.2 mm  
**Remarks** : This new edition includes new topography, working area, submarine cables and depth contours covering the entire chart. This new edition supersedes the earlier edition published on 3 January 2007.

**Chart No.** : GSP1  
**Title** : Anchorages and Aids to Navigation (with area reference)  
**Coverage** : Lat 1° 08.20' N 1° 29.40' N  
               Long 103° 36.10' E 104° 07.20' E  
**Scale** : 1 : 60 000  
**Date Published** : 19 July 2007  
**Size of chart** : 973.9 x 651.2 mm  
**Remarks** : This new edition includes new topography, working area, submarine cables and depth contours covering the entire chart. This new edition supersedes the earlier edition published on 3 January 2007.

## II NEW PUBLICATIONS

### NEW EDITION DUAL BADGED CHARTS TO BE PUBLISHED ON 5 JULY 2007




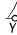

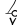
**Chart No** : 4034  
**Title** : Port of Singapore – East Jurong Channel, Pasir Panjang Terminal and West Keppel Fairway  
**Coverage** Lat 1° 14.50' N 1° 18.55' N  
 Long 103° 42.70' E 103° 48.60' E  
**Scale** : 1 : 10 000  
**Date Published** : 5 July 2007  
**Size of chart** : 1094.3 x 746.3 mm  
**Remarks** : This new edition includes updated surveys covering new jetties at North East of Jurong Island, Sinki Fairway, West Keppel Fairway, Pasir Panjang Terminal Berths P24 to P26, Pasir Panjang Wharves Berths P03 to P08 and mooring area for harbour crafts. The existing chart of the same number published on 10 November 2005 is superseded.

**Chart No** : 4035  
**Title** : Port of Singapore – Western Anchorage, Jong Fairway and Cruise Bay  
**Coverage** Lat 1° 10.90' N 1° 16.90' N  
 Long 103° 45.50' E 103° 49.54' E  
**Scale** : 1 : 10 000  
**Date Published** : 5 July 2007  
**Size of chart** : 749.4 x 1105.7 mm  
**Remarks** : This new edition includes updated surveys covering Sinki Fairway, West Keppel Fairway, Pasir Panjang Terminal Berths P24 to P26, Pasir Panjang Wharves Berths P03 to P08, South West of Sentosa, Pulau Sebarok and North of Pulau Bukom. The existing chart of the same number published on 8 September 2005 is superseded.

**Chart No** : 4036  
**Title** : Port of Singapore – Raffles Lighthouse To The Sisters  
**Coverage** Lat 1° 09.40' N 1° 13.47' N  
 Long 103° 44.20' E 103° 50.13' E  
**Scale** : 1 : 10 000  
**Date Published** : 5 July 2007  
**Size of chart** : 1100.0 x 750.1 mm  
**Remarks** : This new edition includes updated surveys covering Pulau Sebarok and a few areas in the Main Strait. The existing chart of the same number published on 8 September 2005 is superseded.

**Chart No** : 4043  
**Title** : Malaysia and Singapore – Kuala Johor and Sungai Johor  
**Coverage** Lat 1° 16.10' N 1° 34.00' N  
 Long 103° 57.90' E 104° 10.00' E  
**Scale** : 1 : 10 000  
**Date Published** : 5 July 2007  
**Size of chart** : 748.1 x 1099.6 mm  
**Remarks** : This new edition includes updated surveys covering Kuala Johor, Eastern Anchorages, Changi East and approaches to Sungai Santi. Abandoned submarine cables are also included. The existing chart of the same number published on 26 September 2002 is superseded.

**II**  
**NOTICES TO MARINERS AND CHART CORRECTIONS**

<b>SP1/GSP1</b>	2 Ed 19/07/07	(HD/HE025/074/2007)	<b>*NM 64/2007</b>
<b>Insert</b>	<b>★ Fl.Y.4s</b>	1°17.31'N	103°43.60'E
		(HD/HE025/075/2007)	<b>*NM 65/2007</b>
	<b>★ Fl.Y.6s</b>	1°17.43'N	103°43.46'E
		(HD/HE025/076/2007 & HD/HE025/077/2007)	<b>*NM 66/2007</b>
	 with triangle topmark pointing downward, <b>Fl.6s</b>	1°17.32'N	103°43.54'E
	 with triangle topmark pointing upward, <b>Fl.4s</b>	1°17.38'N	103°43.62'E
	leading line, pecked from:	1°17.32'N	103°43.54'E
	extending in direction 229.8° to:	1°17.49'N	103°43.75'E
		(HD/HE025/078/2007)	<b>*NM 67/2007</b>
	 <b>Fl.Y.4s, K1</b>	1°24.02'N	103°56.90'E
		(HD/HE025/079/2007)	<b>*NM 68/2007</b>
	 <b>Fl.Y.6s, K2</b>	1°23.90'N	103°56.22'E
		(HD/HE025/080/2007)	<b>*NM 69/2007</b>
	 <b>Fl.Y.8s, K3</b>	1°24.12'N	103°56.08'E
		(HD/HE025/081/2007)	<b>*NM 70/2007</b>
	 <b>Fl.Y.10s, K4</b>	1°25.18'N	103°55.00'E

**II**  
**NOTICES TO MARINERS AND CHART CORRECTIONS**

(HD/DB67/003/2007)

**\*NM 71/2007**

<b>Delete</b>	light character, FI	1°14.40'N	103°45.64'E
		1°14.42'N	103°45.67'E
	leading line and legend 246.8° from:	1°14.40'N	103°45.64'E
	to:	1°14.61'N	103°46.11'E

---

**200**      2Ed 30/11/05 Last NM 60/2007      (Marine Dept. Peninsular Malaysia NTM 19/2007)      **NM 72/2007**

<b>Insert</b>	 <b>Fl.Y.5s</b>	2°47.53'N	101°20.00'E
	 <b>Fl.Y.10s</b>	2°45.00'N	101°20.00'E
	 <b>Fl(4)Y.10s</b>	2°43.50'N	101°23.00'E

---

**202**      5Ed 19/10/06 Last NM 53/2007      (Admiralty Notices 28/3135/2007)      **NM 73/2007**

<b>Insert</b>	 <b>PA</b>	0°54.00'N	103°39.00'E
---------------	---	-----------	-------------

---

**II**  
**TEMPORARY AND PRELIMINARY NOTICES**

**SP1/GSP1**      2 Ed 19/07/07      (Port Marine Notice No. 84/2007)      \***NM 74T/2007**

**Insert**      Working area, pecked line joining:

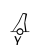
1°14.51'N	103°41.57'E
1°14.30'N	103°41.63'E
1°13.77'N	103°41.15'E
1°13.90'N	103°41.02'E
1°13.86'N	103°40.98'E
1°13.37'N	103°41.48'E
1°13.58'N	103°41.67'E
1°13.84'N	103°41.83'E
1°14.17'N	103°41.95'E
1°14.39'N	103°41.97'E
1°14.51'N	103°41.57'E

legend, *Works in progress (2007)*, centred on:

1°13.98'N	103°41.58'E
-----------	-------------

 **FI.G.4s, EM5**      1°14.98'N      103°42.69'E

 **FI(4)Y.15s, EM6**      1°14.56'N      103°42.35'E

 **FI.Y.10s, EM7**      1°13.73'N      103°41.57'E

---

**III**  
**NAVIGATIONAL INFORMATION**

**\*(NM 75/2007) PORT MARINE NOTICES**

These notices can be accessed directly from MPA website:

[http://www.mpa.gov.sg/circulars\\_and\\_notices/portmarine\\_notices/pm\\_notices.htm](http://www.mpa.gov.sg/circulars_and_notices/portmarine_notices/pm_notices.htm)

<b>PMN No.</b>	<b>Subject</b>
81/2007	A) Submarine Cable installation and rock-filling operations in West Keppel Fairway. B) Marine soil investigation at northern tip of Pulau Ular.
84/2007	Dredging works at Sinki Fairway.
85/2007	Construction of staging ground at Marina South.
86/2007	Dredging and marine construction works at Sungei Punggol, Pulau Punggol Barat and Pulau Punggol Timur.
88/2007	Soil investigation works at Sungei Seletar.

### III AMENDMENTS TO PUBLICATIONS

**\*(NM 76/2007) UPDATING OF PUBLICATION "SINGAPORE PORT INFORMATION 2006/2007 EDITION"**

1 Page 150 - Item 9

JURONG TERMINAL (JURONG PORT PTE LTD) (1°18.3'N, 103°43.1'E)

Amend the following:

Berth	Depth Alongside (Year Surveyed)	
	Delete	<i>Insert</i>
J12	10.8m (1998)	<b>8.8m (2007)</b>

Source: HD/HY Code J00104707

2 Page 153 - Item 21

JURONG ISLAND (POWERSERAYA LTD) (1°17.1'N, 103°43.5'E)

Insert the following:

Note: **Berth 3 is Loading and Unloading of Liquid and Solid.**

Source: HD/List of Berths dated 30 June 2007

3 Page 154 - Item 22

JURONG ISLAND (OILTANKING (S) LTD) (1°16.8'N, 103°44.1'E)

Amend the following:

Berth	Depth Alongside (Year Surveyed)	
	Delete	<i>Insert</i>
MJ20	15.3m (2006)	<b>15.4m (2007)</b>

Insert the following:

Berth	Length of Berth	Depth Alongside (Year Surveyed)
<b>MJ21</b>	<b>115.5m</b>	<b>13.7m (2007)</b>

Source: HD/HY Code H00102707

**III**  
**AMENDMENTS TO PUBLICATIONS**

4 Page 155 - Item 27

TANJONG PENJURU – SHELL TANKER JETTY (SHELL REFINERY)  
(1°17.4'N, 103°44.7'E)

Amend the following:

Berth	Depth Alongside (Year Surveyed)	
	Delete	<i>Insert</i>
Jetty	10.4m (2000)	<b>10.4m (2007)</b>

Source: HD/HY Code H00102607

5 Page 159 - Item 41

TUAS POWER STATION – FUEL OIL UNLOADING JETTY  
(1°16.7'N, 103°38.8'E)

Amend the following:

Berth	Depth Alongside (Year Surveyed)	
	Delete	<i>Insert</i>
Jetty	13.1m (2006)	<b>13.0m (2007)</b>

Source: HD/HY Code G00105707

6 Page 118 – EAST JURONG CHANNEL (Cont/)

Insert the following:

Name of Beacon / Buoy	Position Lat. N Long. E Deg Min	Structure Colour & Shape	Light Characteristic	Owner
<b>OTS4</b>	<b>01 17.308 103 43.597</b>	<b>Yellow 'X' topmark on yellow beacon pile</b>	<b>Fl.Y.4s3m3M</b>	<b>Oiltanking Singapore Ltd</b>
<b>OTS5</b>	<b>01 17.429 103 43.459</b>	<b>Yellow 'X' topmark on yellow beacon pile</b>	<b>Fl.Y.6s3m3M</b>	<b>Oiltanking Singapore Ltd</b>
<b>OTS6 (Lts in line 229.8°)</b>	<b>01 17.315 103 43.543</b>	<b>Black beacon pile with white triangle topmark pointing downward</b>	<b>Fl.W.6s3m3M</b>	<b>Oiltanking Singapore Ltd</b>
<b>OTS7 (Lts in line 229.8°)</b>	<b>01 17.383 103 43.623</b>	<b>Black beacon pile on MD7 with white triangle topmark pointing upward</b>	<b>Fl.W.4s9m3M</b>	<b>Oiltanking Singapore Ltd</b>

Source: HD/HE025/074/2007 to HD/HE025/077/2007

### III AMENDMENTS TO PUBLICATIONS

## 7 Page 122 – SINKI FAIRWAY (Cont/)

Amend the following:

Name of Beacon / Buoy		Light Characteristic	
Delete	<i>Insert</i>	Delete	<i>Insert</i>
Rear Beacon Lts in line 246° 47' (Pulau Bukom)	<b>Rear Beacon (Pulau Bukom)</b>	Fl.Y.4s13m11M Arc of visibility 157.8° - 337.8° (180°)	-
Front Beacon Lts in line 246° 47' (Pulau Bukom)	<b>Front Beacon (Pulau Bukom)</b>	Fl.Y.2s7m11M Arc of visibility 157.8° - 337.8° (180°)	-

Source: HD/DB67/003/2007

## 8 Page 125

**PULAU SEBAROK (Contd/)**

Substitute the following:

**"VOTTS 2 Beacon "** for VOTTS Front Beacon.**"VOTTS 3 Beacon "** for VOTTS Rear Beacon.

Source: HD/DB67/004/2007

**IV**  
**REPRINT OF RADIO NAVIGATIONAL WARNINGS**

Nil

V  
**REPRINT OF ADMIRALTY NOTICES TO MARINERS  
 FOR DUAL BADGED CHARTS**

These notices can be accessed directly from UKHO Website:

<http://www.ukho.gov.uk/amd/weeklyNms.asp>

**2857 \* SINGAPORE - Jurong Island – Banyan Basin – West Jurong Channel and Ayer Chawan Basin Northwards - Jetties. Dredged depths. Berths. Depths. Coastline. Dredged area. Obstructions.**

Source: Maritime and Port Authority of Singapore

**Chart 4031** [previous update 2260/07] WGS84 DATUM

Insert the accompanying block, showing new jetties, dredged depths, berths and amendments to depths and coastline, centred on: 1° 15' 690N., 103° 40' 960E.

**Chart 4032** [previous update 2643/07] WGS84 DATUM

Insert the accompanying block, showing new jetties, dredged depths, berths and amendments to depths and coastline, centred on: 1° 15' 700N., 103° 40' 970E.

**Chart 4033** [previous update 1852/07] WGS84 DATUM

Insert the accompanying block A, showing new jetties and amendments to the coastline, centred on: 1° 15' 690N., 103° 40' 965E.  
 the accompanying block B, showing a new dredged area, obstructions and amendments to dredged depths, centred on: 1° 17' 890N., 103° 41' 330E.

Amend dredged depth to, 10.0m (2007), centred on: 1° 17' 060N., 103° 42' 110E.  
 dredged depth to, 10.7m (2007), centred on: 1° 17' 500N., 103° 42' 210E.  
 dredged depth to, 11.4m (2007), centred on: 1° 17' 630N., 103° 42' 410E.


**Chart 4040** [previous update 2460/07] WGS84 DATUM

Insert the accompanying block, showing new jetties and amendments to the coastline, centred on: 1° 15' 70N., 103° 40' 94E.

**3036 \* SINGAPORE– East Johor Strait – Pulau Punggol Timor Northwards – Buoyage.**

Source: Maritime and Port Authority of Singapore


**Chart 4044** [previous update 2259/07] WGS84 DATUM

Insert  Fl.Y.6s B1 1° 25' 36N., 103° 53' 84E.  
 Fl.Y.4s B2 1° 25' 43N., 103° 53' 72E.  
 Fl.Y.2s B3 1° 25' 50N., 103° 53' 60E.

Move  Fl.Y.6s Shimizu 1, from: 1° 25' 66N., 103° 53' 92E.  
 to: 1° 25' 66N., 103° 53' 59E.

**V**  
**REPRINT OF ADMIRALTY NOTICES TO MARINERS**  
**FOR DUAL BADGED CHARTS**

**Chart 4044 (plan B, Pelabuhan Johor (Johor Port))** [previous update 2259/07] WGS84 DATUM

Insert	 <i>Fl.Y.6s B1</i>  <i>Fl.Y.4s B2</i>  <i>Fl.Y.2s B3</i>	<p>1° 25' 360N., 103°53' 844E.</p> <p>1° 25' 431N., 103°53' 722E.</p> <p>1°25' 502N., 103°53' 600E.</p>
Move	<p> <i>Fl.Y.6s Shimizu 1</i>, from:</p> <p style="padding-left: 100px;">to:</p>	<p>1° 25' 662N., 103°53' 915E.</p> <p>1° 25' 661N., 103°53' 591E.</p>

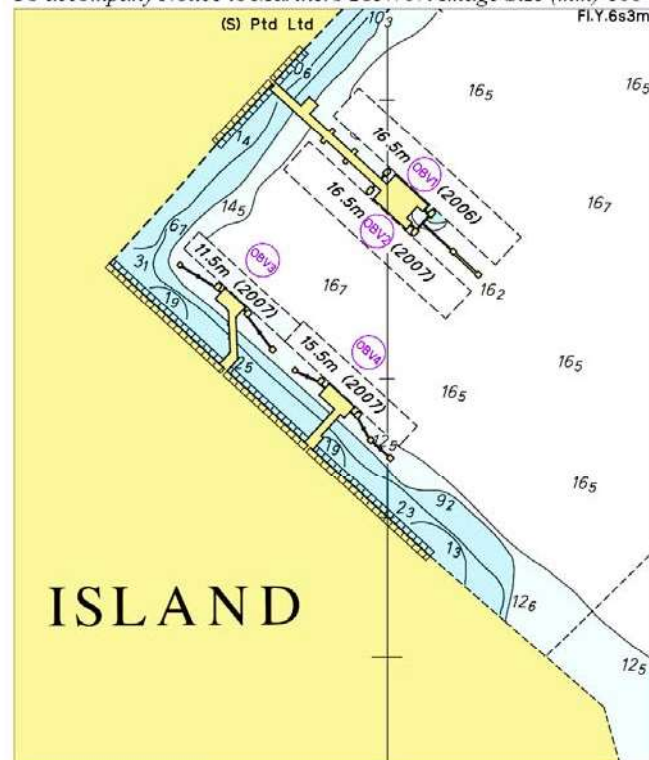
**3037 \* SINGAPORE– Changi East –Changi Naval Base Northwards –Buoyage.**

Source: Maritime and Port Authority of Singapore

**Chart 4044** [previous update 3036/07] WGS84 DATUM

Delete	 <i>Fl.R.2s CD1</i>  <i>Fl.G.2s CD2</i>	<p>1° 19' 87N., 104°01' 94E.</p> <p>1° 19' 91N., 104°01' 84E.</p>
--------	---	---

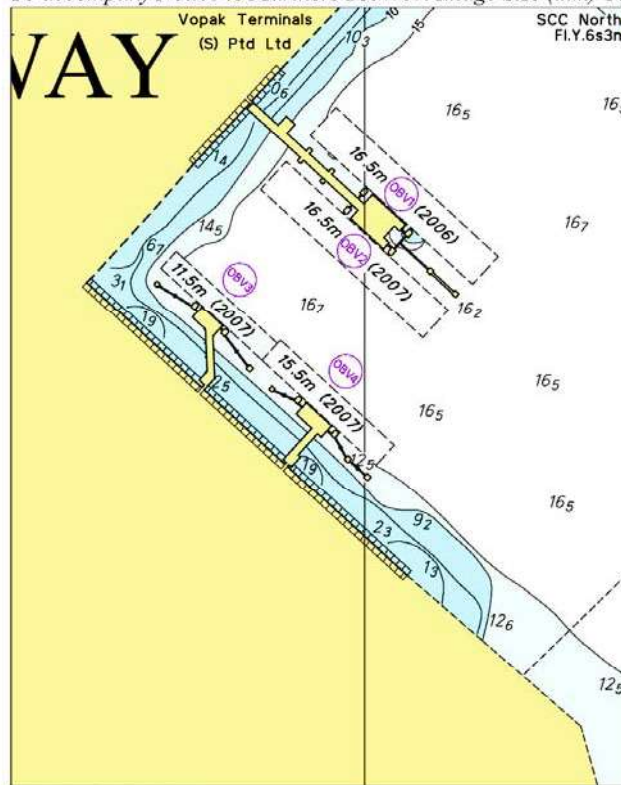
To accompany Notice to Mariners 2857/07. Image Size (mm) 100 by 85.2



Block for Chart No 4031

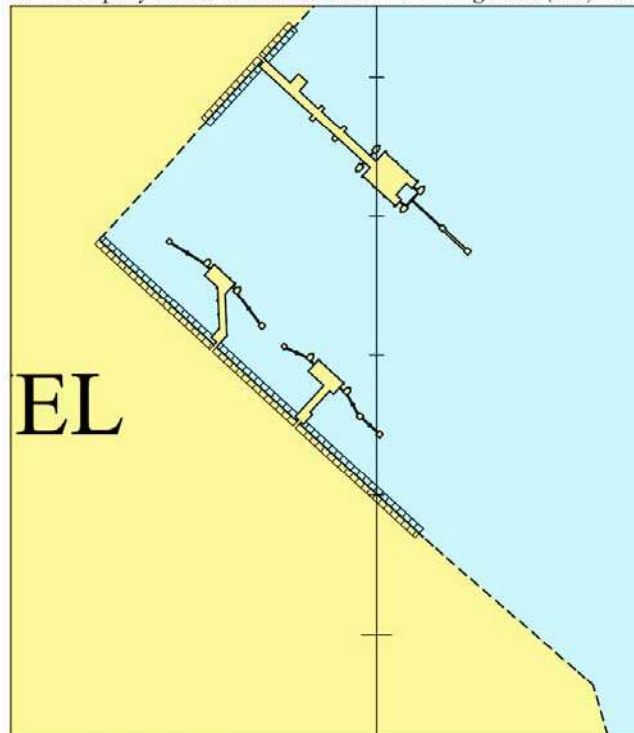
**V**  
**REPRINT OF ADMIRALTY NOTICES TO MARINERS**  
**FOR DUAL BADGED CHARTS**

To accompany Notice to Mariners 2857/07. Image Size (mm) 103 by 82



Block for Chart No 4032

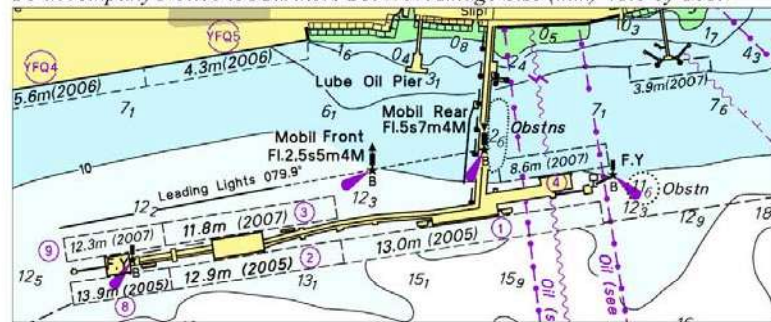
To accompany Notice to Mariners 2857/07. Image Size (mm) 96.7 by 83.7



Block A for Chart No 4033

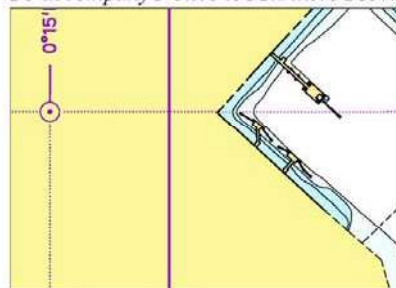
V  
REPRINT OF ADMIRALTY NOTICES TO MARINERS  
FOR DUAL BADGED CHARTS

To accompany Notice to Mariners 2857/07. Image Size (mm) 41.6 by 101.7



Block B for Chart No 4033

To accompany Notice to Mariners 2857/07. Image Size (mm) 37.5 by 52.1



Block for Chart No 4040

Updated to Admiralty Notices to Mariners Edition No. 28 of 2007 dated 12 July 2007.

---

**SINGAPORE ELECTRONIC NAVIGATIONAL CHARTS (ENC) DISTRIBUTORS**

Please approach any of the appointed distributors to purchase the Singapore ENC.

CONTACT PERSON/ DESIGNATION	ADDRESS	TELEPHONE/FAX NO./EMAIL/WEBSITE
Mr Chong Chee Meng General Manager	DPM (Singapore) Pte Ltd 1 Maritime Square, #09-72 Harbour Front Centre, Singapore 099253	Tel. No.: +65 6270 4060 Fax No.: +65 6276 3858 Email: <a href="mailto:sales@dpmsingapore.com.sg">sales@dpmsingapore.com.sg</a> Website: <a href="http://www.dpmsingapore.com.sg">http://www.dpmsingapore.com.sg</a>
Mr Hamzah Akhbar MDS Branch Manager	Kelvin Hughes(S) Pte Ltd 8 Pandan Avenue #02-00, Singapore 609384	Tel. No.: +65 6545 9880 ext.24 Fax No.: +65 6545 8892 Email: <a href="mailto:hamzah.akhbar@khsing.com">hamzah.akhbar@khsing.com</a> Website: <a href="http://www.kelvinhughes.co.uk">http://www.kelvinhughes.co.uk</a>
Mr Philip Loh Sales Manager	Motion Smith 76 Shenton Way #01-01, Singapore 079119	Tel. No.: +65 6220 5098 Fax No.: +65 6225 4902 Email: <a href="mailto:sales@motsmith.com">sales@motsmith.com</a> Website: <a href="http://www.motsmith.com">http://www.motsmith.com</a>
Mr Looi Keen Wai Regional Sales Manager	Transas Marine Pacific Pte Ltd 750C Chai Chee Road, Technopark@Chai Chee, #04-07 Singapore 469003	Tel. No.: +65 6443 3061 Fax No.: +65 6443 3025 Email: <a href="mailto:looi@transas.com.sg">looi@transas.com.sg</a> Website: <a href="http://www.transas.com.sg">http://www.transas.com.sg</a>
Mr Choy Kum Weng Director	Vector Services Pte Ltd 15 West Coast Highway, #02-14A Pasir Panjang Building Singapore 117861	Tel. No.: +65 6777 3602 Fax No.: +65 6777 9203 Email: <a href="mailto:kwchoy@pacific.net.sg">kwchoy@pacific.net.sg</a>
Mr George Arts President	Marine Press of Canada 640 Rue St-Paul Ouest, Suite 300 Montreal (QC) Canada, H3C1L9	Tel. No.: (514) 866-8342 Fax No.: (514) 866-9050 Email : <a href="mailto:sales@marinepress.com">sales@marinepress.com</a> Website: <a href="http://www.marinepress.com">http://www.marinepress.com</a>
Mr Thomas Wilde Superintendent	HanseNautic GmbH Bade & Hornig, Eckardt & Messtorff Herrengaben 31 D-20459 Hamburg, Germany	Tel. No.: +49 40 374 811-32 Fax No.: +49 40 366 400 Email: <a href="mailto:wilde@hansenautic.de">wilde@hansenautic.de</a> Website : <a href="http://www.HanseNautic.com">http://www.HanseNautic.com</a>
Ms Verena Borsos Manager	SevenCs AG + Co. KG Ruhrstrasse 90, D-22761 Hamburg, Germany	Tel. No.: +49 40 853 58 6940 Fax No.: +49 40 853 58 6949 Email: <a href="mailto:sales@chartworld.com">sales@chartworld.com</a> Website : <a href="http://www.sevencs.com">http://www.sevencs.com</a>
Mr Keiji Shimizu ENC Manager	Japan Hydrographic Association ENC Service Division 5-3-3 Tsukiji, Chuo-ku Tokyo 104-0045, Japan	Tel. No.: +81 3 3543 0752 Fax No.: +81 3 3543 0695 Email: <a href="mailto:enc-support@jha.jp">enc-support@jha.jp</a> Website: <a href="http://www.jha.jp.com">http://www.jha.jp.com</a>
Mr Jester-Kim Foreign Business Department Manager	E_MLX Co. Ltd Ssangyong Research No.2 Lab Sinseong-Dong 100 Yusong-Gu, Daejoen 305-804, Korea (ROK)	Tel. No.: +82 42 865 1893 Fax No.: +82 42 865 1884 Email: <a href="mailto:Jester-kim@emlx.co.kr">Jester-kim@emlx.co.kr</a>
Mr C G Kim Managing Director	Korean Ocean Development Co. Ltd 2ND Fl, Dongbang Bldg, 25-4, 4 Ga Jungang-Dong, Jung-Gu, Busan, South Korea	Tel. No.: +82 514 66 0760 Fax No.: +82 514 65 9345 Email: <a href="mailto:sales@chartkorea.com">sales@chartkorea.com</a> Website: <a href="http://www.chartkorea.com">http://www.chartkorea.com</a>

**SINGAPORE ELECTRONIC NAVIGATIONAL CHARTS (ENC) DISTRIBUTORS**  
Please approach any of the appointed distributors to purchase the Singapore ENC.

<b>CONTACT PERSON/ DESIGNATION</b>	<b>ADDRESS</b>	<b>TELEPHONE/FAX NO./EMAIL/WEBSITE</b>
Mr Kjell Nodland	C-Map Norway A/S P.O Box 212 , N-4371 Egersund, Norway	Tel No.: +47 514 64 700 Fax No.: +47 514 64 701 Email: <a href="mailto:market@c-map.no">market@c-map.no</a> Website : <a href="http://www.c-map.no">http://www.c-map.no</a>
Mr Roar Moe International Marketing Coordinator	Maritime Information System AS (MARIS) Danholmen 25, No.3115 Tonsberg, Norway	Tel. No.: +47 33 30 42 50 Fax No.: +47 33 30 42 51 Email: <a href="mailto:roar.moe@maris.no">roar.moe@maris.no</a> Website: <a href="http://www.maris.no">http://www.maris.no</a>
Ms Eva Hegland Sales, order and distributor support.	PRIMAR STAVANGER Lervigsveien 36, P.O Box 60, N-4001 Stavanger, Norway	Tel. No.: +47 51 93 9500 Fax No.: +47 51 93 9501 Email: <a href="mailto:sales@primar.org">sales@primar.org</a> Website : <a href="http://www.primar-stavanger.org">http://www.primar-stavanger.org</a>
Mr Andy Criddle Regional Sales Manager	United Kingdom Hydrographic Office Admiralty Way, Taunton, Somerset TA1 2DN United Kingdom	Tel. No.: +44 (0)1823 337900 Fax No.: +44 (0)1823 284077 Emails: <a href="mailto:vargroup@ukho.gov.uk">vargroup@ukho.gov.uk</a> & <a href="mailto:andrew.criddle@ukho.gov.uk">andrew.criddle@ukho.gov.uk</a> Website: <a href="http://www.ukho.gov.uk">http://www.ukho.gov.uk</a>

**CHART AGENTS FOR MARITIME AND PORT AUTHORITY OF SINGAPORE (MPA) PUBLICATIONS**

**Agent's name** : MOTION SMITH  
**Address** : 76 Shenton Way # 01-01  
Singapore 079119  
**Telephone** : (65) 6220 5098  
: (After Office hours: Pager No. 9304 4156, 9304 4159)  
**Fax No.** : (65) 6225 4902  
**E-mail** : [sales@motsmith.com](mailto:sales@motsmith.com)  
**Website** : <http://www.motsmith.com>

**Agent's name** : HONG YUNN SEA PROFESSIONAL CO., LTD  
**Address** : 198 Ta Tong 1<sup>st</sup> Road, Kaohsiung 800,  
Taiwan  
**Telephone** : 886-7-2217367  
**Fax No.** : 886-7-2818180  
**E-mail** : [kimchang@hongyunn.com.tw](mailto:kimchang@hongyunn.com.tw)  
**Website** : <http://www.hongyunn.com.tw>

## HYDROGRAPHIC NOTE - Instructions

1. Mariners are requested to notify the Chief Hydrographer, Maritime and Port Authority of Singapore, when new or suspected dangers to navigation are discovered, changes are observed in aids to navigation or where corrections to nautical publications may be necessary. Reports, which cannot be confirmed or are lacking in certain details should not be withheld.
2. Any ambiguities of time, positioning and depth should be stressed and any firm expectation of being able to check the information provided on a following voyage should be mentioned.
3. Mariners using satellite position fixing systems, eg. GPS, should provide details of equipment and datum used (where applicable). Where bearings (true or magnetic) are taken visually or by radar to fix a position, it should include more than two objects in order to provide a check on its accuracy. A position may also be defined by bearing and distance from a conspicuous object eg. beacon, lighthouse etc.
4. The note should include a tracing or a digital image of the chart used and the details should be clearly marked.
5. Echo sounders frequently register greater depths than the advertised maximum depth for the equipment, eg. a trace appearing at 50 metres may be in fact be 550 metres or even 1050 metres for equipment whose maximum depth is 500 metres. Erroneous depths caused by 2nd transmission error can usually be recognised by the following:
  - (a) the tracing being weaker than normal for the depth registered,
  - (b) the trace appearing to pass through the transmission line,
  - (c) the feathery nature of the trace.
6. An acknowledgement of receipt will be sent. When a Notice to Mariners is issued, the sender's vessel or name is quoted as the source unless the same information is also received in foreign Notices to Mariners.
7. Reports of shoals, uncharted dangers and defects in aids to navigation may also be made to the appropriate Singapore Port Operations Control Station on VHF Channels 10, 12, 14, 68 or 73.

# HYDROGRAPHIC NOTE

To:

Chief Hydrographer  
Hydrographic Department  
Maritime and Port Authority of Singapore  
460 Alexandra Road PSA Building #20-00  
Singapore 119963

Tel : (65) 6375 1227  
Fax : (65) 6278 7646  
Email : [hydrographic@mpa.gov.sg](mailto:hydrographic@mpa.gov.sg)

**Sender's Contact Details** :

Date : .....

Name of Vessel : .....

Address of Sender : .....

Tel : ..... Fax : .....

Email : .....

**Nature of Observation** :

General Location : .....

Subject : .....

Position : Lat. .... Long. ....

Charts Used : .....

Date & Time of Observation : .....

Details : .....

.....

.....

Attachment : .....

**Equipment Used** :

Type of Position Fixing : ..... GPS / DGPS ..... Others : .....

Type of Echo Sounder : .....

Name and Signature : .....

Ship's/Company's stamp : .....