



SINGAPOREAN NOTICES TO MARINERS

SECTION	CONTENT	Page
I	Index of Charts & Publications	167
II	New Publications	172
	Notices to Mariners and Chart Corrections	175
	Temporary and Preliminary Notices	178
III	Navigational Information	179
	Amendments to Publications	182
IV	Reprint of Radio Navigational Warnings	183
V	Reprint of Admiralty Notices to Mariners for Dual Badged Charts	184

The monthly Notices to Mariners contain corrective information affecting charts published by the Hydrographic Department, Maritime and Port Authority of Singapore. The information contained in these Notices should be updated on the charts affected. Notices under Section II apply only to the particular Singaporean Chart(s) indicated.

Mariners are requested to notify the Chief Hydrographer, Maritime and Port Authority of Singapore, immediately on the discovery of new dangers or suspected dangers to navigation and of changes or defects in aids to navigation. See Hydrographic Note on back page.

The monthly Singaporean Notices to Mariners can be accessed directly from the MPA website:

<http://www.mpa.gov.sg/> > Circulars & Notices > Singaporean NTM

or

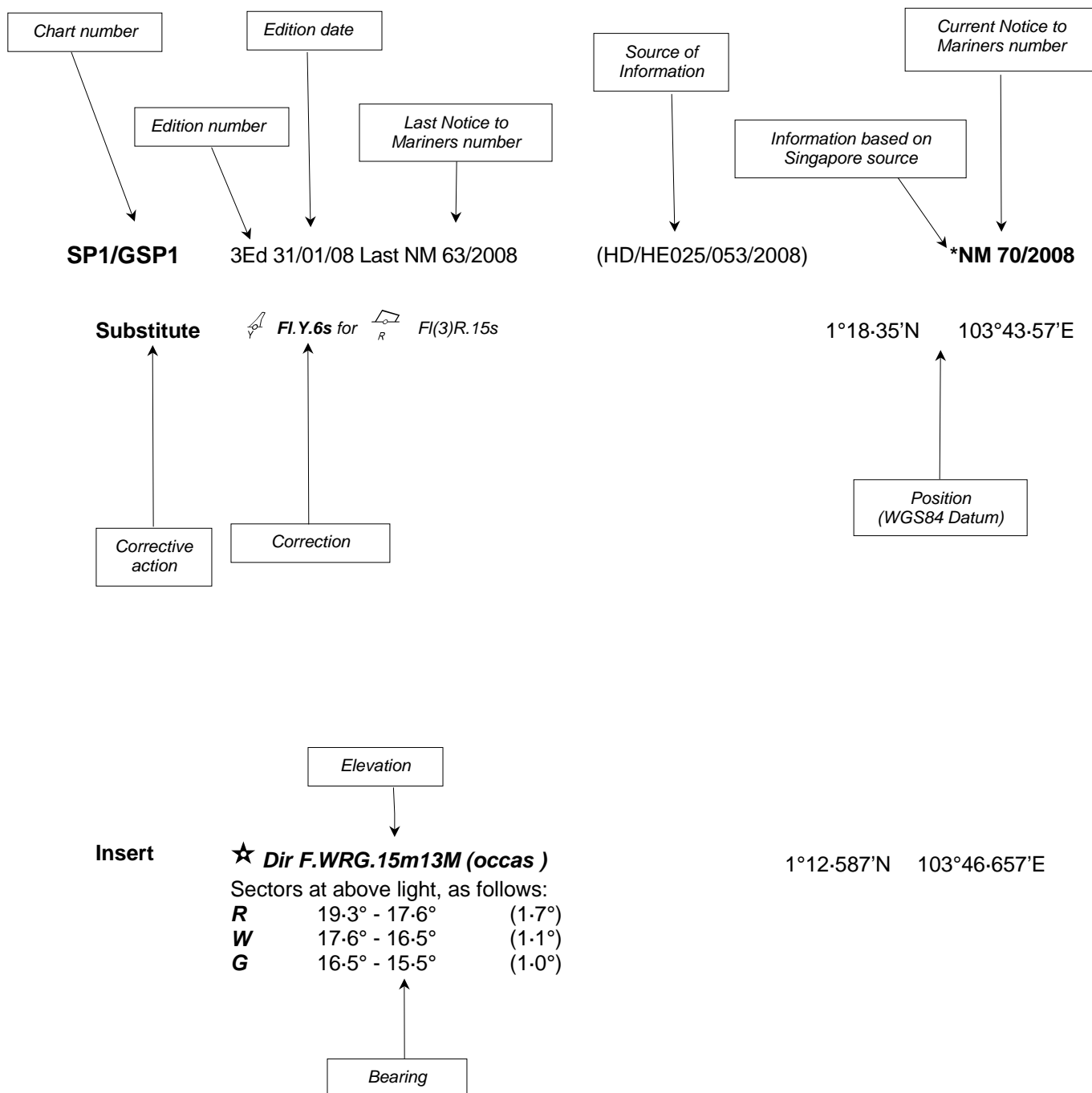
<http://www.mpa.gov.sg/infocentre/publications/noticesmari.htm>

This service is offered free of charge.

Hydrographic Department
Maritime and Port Authority of Singapore
460 Alexandra Road
PSA Building #20-00
Singapore 119963
Tel: (65) 6375 1227
Fax: (65) 6278 7646

EXPLANATION OF FORMAT

The elements of a typical chart correction are explained below.



Notes:

- a) Notice to Mariners number followed by:
 - T** indicates a Temporary Notice (eg. *NM 80T/2008).
 - P** indicates a Preliminary Notice (eg. *NM 80P/2008).
- b) Bearings are referred to True Compass in degrees clockwise from 000° to 359°. Bearings related to lights are from seaward.
- c) Heights and elevations are above Mean High Water Springs.

I
INDEX OF CHARTS AND PUBLICATIONS

DESCRIPTIONS	NOTICES NO	PAGE NO
Index of Singaporean Charts	-	169
Index of Dual Badged Charts	-	170
Index of Singapore Electronic Navigational Charts (ENC)	-	171
New Edition Dual Badged Charts	-	172
Singaporean Chart GSP1/SP1	*107, *108	175
Singaporean Chart 200	109	175
Singaporean Chart 201	110, 111	175
Singaporean Chart 202	110, 112	175
Singaporean Chart 500	*107, *108, 110, 113	176
Singaporean Chart 501	*107, *108, 110, 113, 114	176
Singaporean Chart 503	112, 115	176, 177
Port Marine Notices	*116	179
Laying of operation (Asia America Gateway) Submarine Cable - Singapore (Changi Ferry Terminal) to Singapore Strait Eastwards	*117	179
Laying of Intra-Asia Submarine Cable - Singapore (Tanah Merah Ferry Terminal) to Singapore Strait Eastwards	*118	180
Singaporean Print on Demand (POD) Charts	*119	180
Updating of Publication "SINGAPORE PORT INFORMATION 2008/2009 EDITION"	*120	182
Singapore Electronic Navigational Charts (ENC) Distributors	-	187

* Denotes information are based on Singapore source.

I

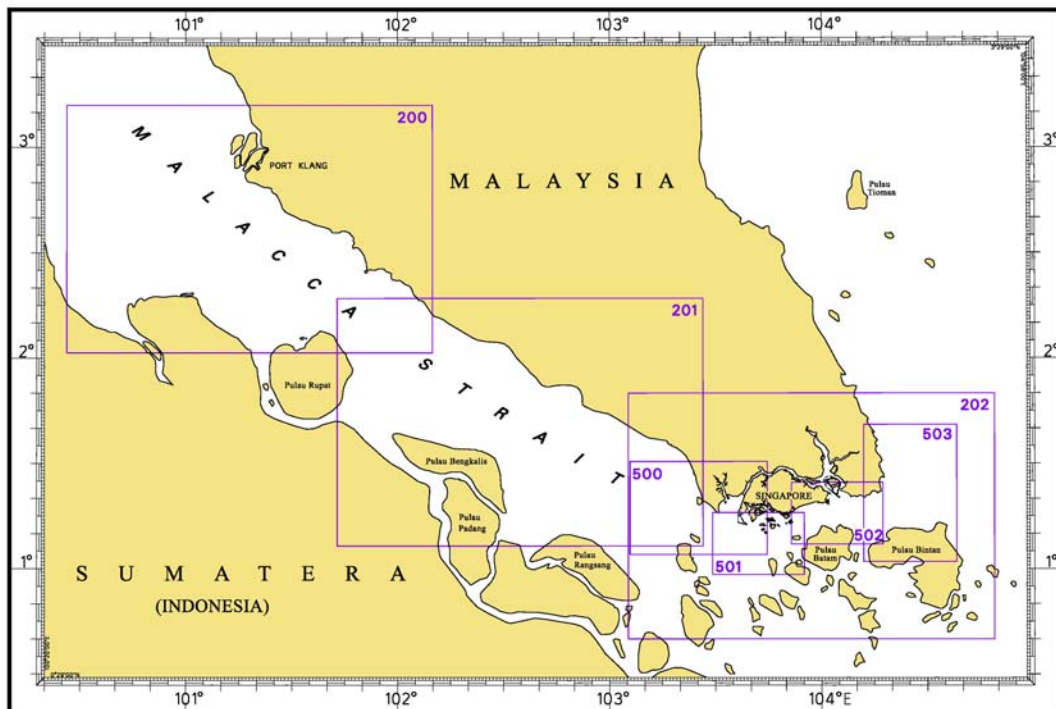
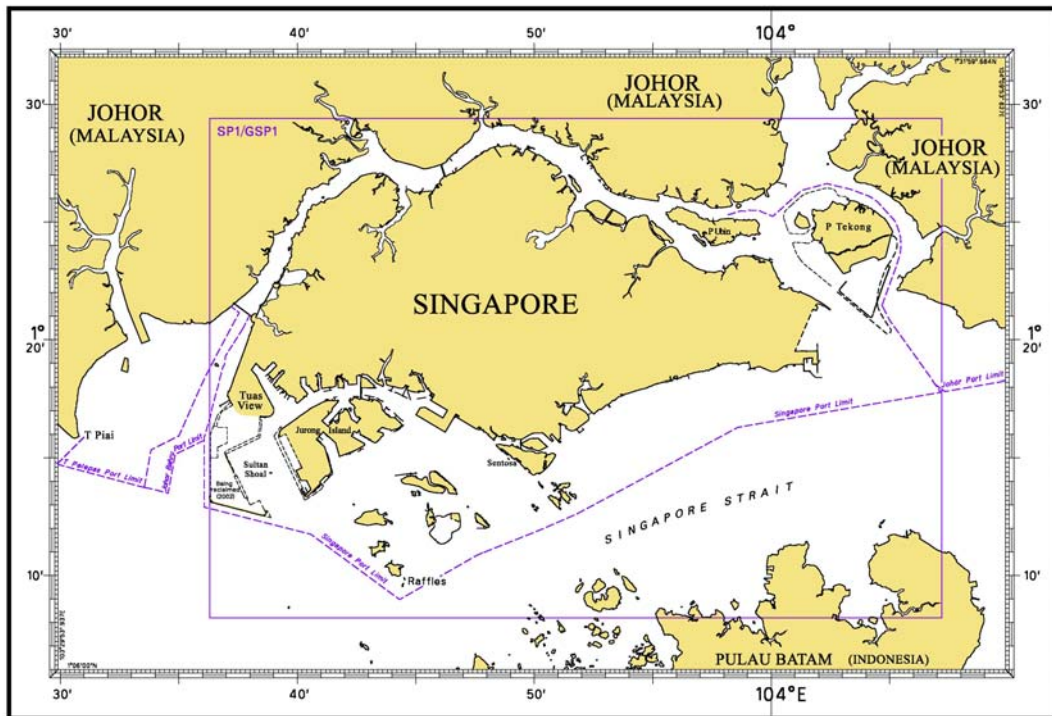
INDEX OF CHARTS AND PUBLICATIONS

NOTICES NO	DESCRIPTION	PAGE NO	NOTICES NO	DESCRIPTION	PAGE NO
	Index of Singaporean Charts	169	*118	Laying of Intra-Asia Submarine Cable - Singapore (Tanah Merah Ferry Terminal) to Singapore Strait Eastwards	180
	Index of Dual Badged Charts	170			
	Index of Singapore Electronic Navigational Charts (ENC)	171	*119	Singaporean Print on Demand (POD) Charts	180
	New Edition Dual Badged Charts	172	*120	Updating of Publication "SINGAPORE PORT INFORMATION 2008/2009 EDITION"	182
*107	SP1/GSP1 500 501	175 176 176		Singapore Electronic Navigational Charts (ENC) Distributors	187
*108	SP1/GSP1 500 501	175 176 176			
109	200	175			
110	201 202 500 501	175 175 176 176			
111	201	175			
112	202 503	175 176			
113	500 501	176 176			
114	501	176			
115	503	177			
*116	Port Marine Notices	179			
*117	Laying of operation (Asia America Gateway) Submarine Cable - Singapore Changi Ferry Terminal to Singapore Strait Eastwards	179			

* Denotes information are based on Singapore source.

I INDEX OF CHARTS AND PUBLICATIONS

INDEX OF SINGAPOREAN CHARTS

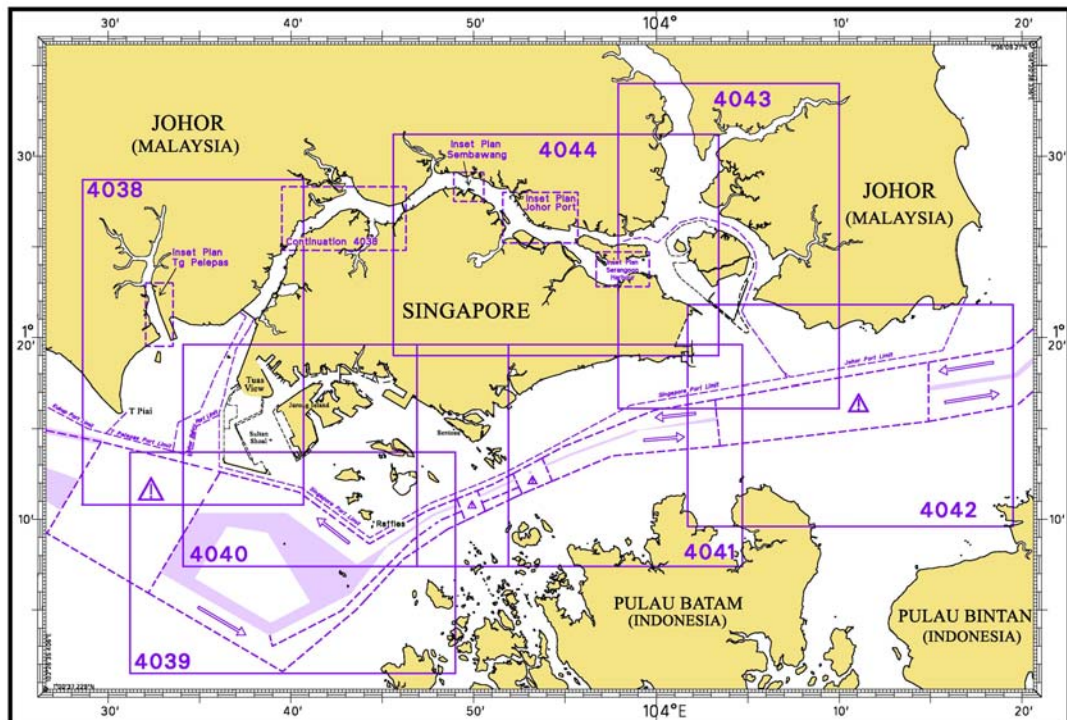
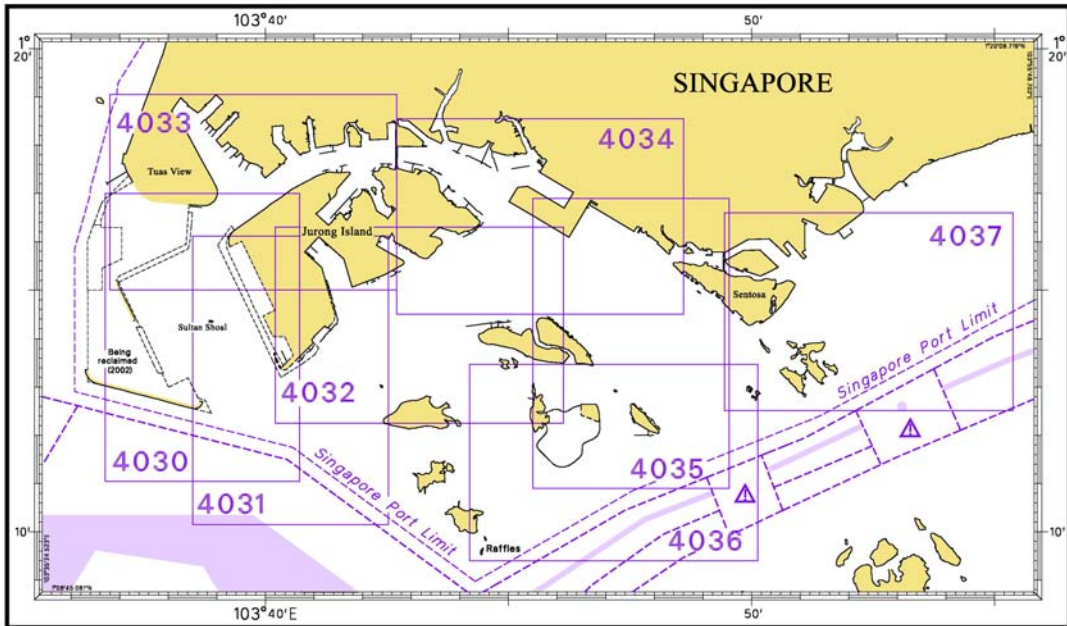


Notes:

Updated SINGAPOREAN Charts (excluding Charts SP1/GSP1 and 503) are available through our Print On Demand (POD)(Chart Service). For more information, refer to Section III – Navigational Information and these charts can be purchased from our authorised Chart Agents:

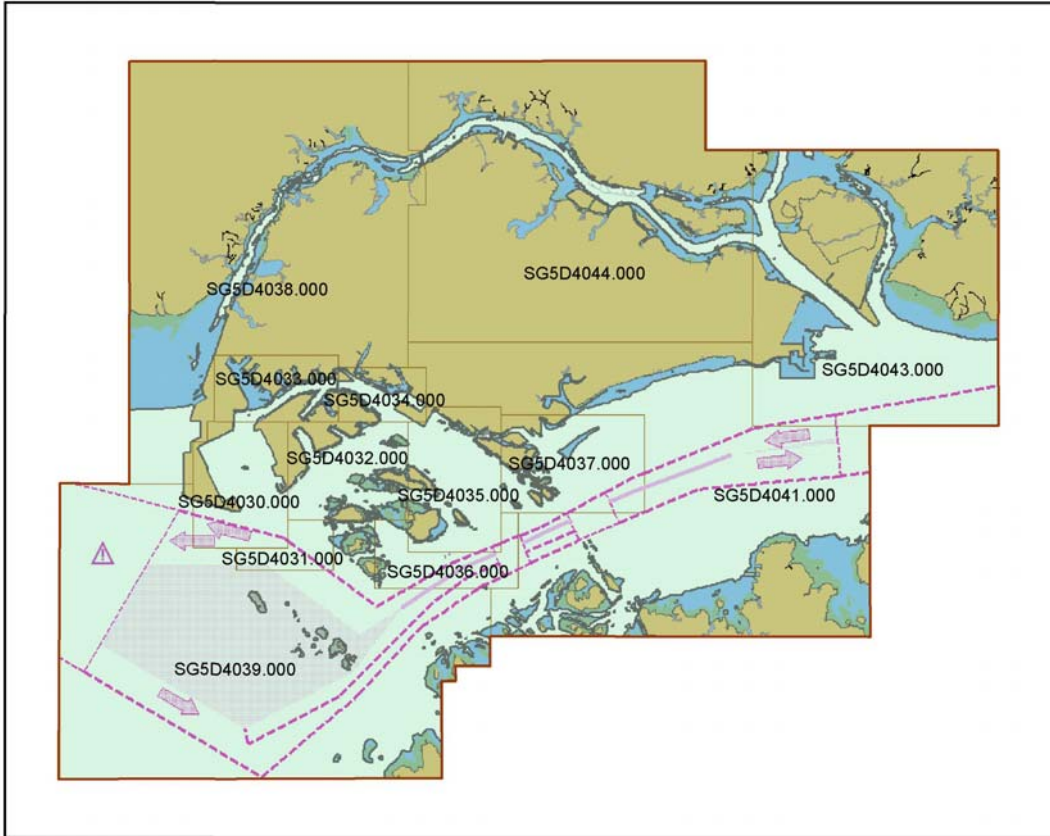
DPM (Singapore) Pte Ltd, E.W. Liner Charts & Publications Pte Ltd and Motion Smith.

I INDEX OF CHARTS AND PUBLICATIONS



I
INDEX OF CHARTS AND PUBLICATIONS

INDEX OF SINGAPORE ELECTRONIC NAVIGATIONAL CHARTS (ENC)



II NEW PUBLICATIONS

NEW EDITION DUAL BADGED CHARTS PUBLISHED ON 24 JULY 2008

- 1 The following new edition charts are jointly produced by MPA, Hydrographic Department and the United Kingdom Hydrographic Office :

Chart Number : **4034**
Title : Port of Singapore – East Jurong Channel, Pasir Panjang Terminal and West Keppel Fairway
Coverage : Lat 1° 14.50' N 1° 18.55' N
 Long 103° 42.70' E 103° 48.60' E
Scale : 1 : 10 000
Date Published : 24 July 2008
Size of chart : 1094.3 x 746.3 mm
Remarks : This new edition includes updated survey data covering :-

- East Jurong Channel
- West Keppel Fairway
- Pasir Panjang Fairway
- Selat Sakra

The existing chart of the same number published on 31 January 2008 is superseded.

Chart Number : **4035**
Title : Port of Singapore – Western Anchorages, Jong Fairway and Cruise Bay
Coverage : Lat 1° 10.90' N 1° 16.90' N
 Long 103° 45.50' E 103° 49.54' E
Scale : 1 : 10 000
Date Published : 24 July 2008
Size of chart : 749.4 x 1105.7 mm
Remarks : This new edition includes updated survey data covering :-

- East Jurong Channel
- West Keppel Fairway
- Pasir Panjang Fairway
- Western Anchorages
- Approaches to Shell SBM

The existing chart of the same number published on 31 January 2008 is superseded.

II NEW PUBLICATIONS

Chart Number	:	4040
Title	:	Singapore, Indonesia and Malaysia, Tuas View to Pulau Sakijang Bendera (S. John's Island)
Coverage	:	Lat 1° 07.40' N 1° 19.60' N Long 103° 34.10' E 103° 51.90' E
Scale	:	1 : 30 000
Date Published	:	24 July 2008
Size of chart	:	1100.6 x 749.5 mm
Remarks	:	This new edition includes updated survey data covering :- <ul style="list-style-type: none"> • Tuas Anchorages • West & East Jurong Channel • Temasek Fairway • Raffles Shoal • Western Anchorages • Approaches to Pulau Sebarok • Area around Pulau Busing, Pulau Ular and Pulau Bukom Kechil • East Keppel Fairway • Sister Fairway

The existing chart of the same number published on 21 September 2006 is superseded.

Chart Number	:	4041
Title	:	Singapore and Indonesia, Pulau Sebarok to Changi
Coverage	:	Lat 1° 07.40' N 1° 19.60' N Long 103° 46.90' E 104° 04.70' E
Scale	:	1 : 30 000
Date Published	:	24 July 2008
Size of chart	:	1100.6 x 749.5 mm
Remarks	:	This new edition includes updated survey data covering :- <ul style="list-style-type: none"> • Western Anchorages • Approaches to Pulau Sebarok • East Keppel Fairway • Sister Fairway • Eastern Anchorage • Eastern Fairway • Eastern Bunkering A Anchorage • Eastern Special Purposes D Anchorage








The existing chart of the same number published on 24 May 2007 is superseded.

II NEW PUBLICATIONS

Chart Number	:	4042
Title	:	Indonesia, Malaysia and Singapore Changi To Pulau Mungging and Tanjung Buntan To Tanjung Tondang
Coverage	:	Lat 1° 09.55' N 1° 21.75' N Long 104° 01.70' E 104° 19.50' E
Scale	:	1 : 30 000
Date Published	:	24 July 2008
Size of chart	:	1100.6 x 749.5 mm
Remarks	:	This new edition includes updated survey data covering :- <ul style="list-style-type: none">• Eastern Bunkering Anchorage• Changi General Purposes and Man-of-War Anchorages• Cable Corridor Area• Area South of Pulau Tekong




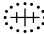




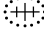
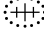

The existing chart of the same number published on 20 May 2004 is superseded.

II NOTICES TO MARINERS AND CHART CORRECTIONS

SP1/GSP1	3Ed 31/01/08 Last 100/2008	(HD/HE025/087/2008)		*NM 107/2008
Delete	 <i>Fl.G.2s</i> PKHDB-19		1°13.91'N	103°36.29'E
		(HD/HE025/088/2008)		*NM 108/2008
Delete	 <i>Fl.G.2s</i> PKHDB-20		1°14.19'N	103°36.29'E
<hr/>				
200	2Ed 30/11/05 Last 75/2008	(Admiralty Notices 25/3271/2008)		NM 109/2008
Insert	 <i>Fl.7s</i>		2°28.41'N	100°30.44'E
	depth <i>18_s</i> enclosed by 20m contour		2°21.81'N	101°37.09'E
	depth <i>22</i>		2°53.41'N	100°48.48'E
	depth <i>16</i> enclosed by 20m contour		2°49.68'N	100°50.87'E
Delete	depth <i>28_s</i>		2°21.76'N	101°36.85'E
<hr/>				
201	3Ed 5/10/07 Last 101/2008	(Admiralty Notices 25/3297/2008)		NM 110/2008
Insert	depth <i>29</i> enclosed by 30m contour		1°11.63'N	103°23.08'E
			1°10.80'N	103°25.78'E
		(Admiralty Notices 27/3627/2008)		NM 111/2008
Insert			1°23.15'N	102°09.90'E
	 LFl.15s10m10M		1°11.17'N	102°12.90'E
<hr/>				
202	5Ed 19/10/06 Last 102/2008	(Admiralty Notices 25/3297/2008)		NM 110/2008
Insert	depth <i>29</i> enclosed by 30m contour		1°11.63'N	103°23.08'E
	depth <i>18</i> enclosed by 20m contour		1°06.04'N	103°30.99'E
			1°10.80'N	103°25.78'E
		(Admiralty Notices 23/2969/2008)		NM 112/2008
Substitute	range of light, 20M for 13M		1°13.15'N	104°34.60'E

II

NOTICES TO MARINERS AND CHART CORRECTIONS

500	5Ed 30/08/07 Last 95/2008	(HD/HE025/087/2008)	*NM 107/2008
Delete	 <i>Fl.G</i>		1°13-91'N 103°36-29'E
		(HD/HE025/088/2008)	*NM 108/2008
Delete	 <i>Fl.G</i>		1°14-19'N 103°36-29'E
		(Admiralty Notices 25/3297/2008)	NM 110/2008
Delete	depth <i>34</i>		1°11-63'N 103°23-11'E
Insert	depth <i>29</i> enclosed by 30m contour		1°11-63'N 103°23-08'E
	depth <i>18</i> enclosed by 20m contour		1°06-04'N 103°30-99'E
			1°10-80'N 103°25-78'E
		(Admiralty Notices 25/3295/2008)	NM 113/2008
Insert			1°05-82'N 103°43-28'E
Delete			1°06-18'N 103°42-96'E
<hr/>			
501	4Ed 21/09/06 Last 102/2008	(HD/HE025/087/2008)	*NM 107/2008
Delete	 <i>Fl.G.2s</i>		1°13-91'N 103°36-29'E
		(HD/HE025/088/2008)	*NM 108/2008
Delete	 <i>Fl.G.2s</i>		1°14-19'N 103°36-29'E
		(Admiralty Notices 25/3297/2008)	NM 110/2008
Insert	depth <i>18</i> enclosed by 20m contour		1°06-04'N 103°30-99'E
		(Admiralty Notices 25/3295/2008)	NM 113/2008
Insert			1°05-82'N 103°43-28'E
Delete			1°06-18'N 103°42-96'E
		(Admiralty Notices 23/2970/2008)	NM 114/2008
Relocate	 , from to		1°02-30'N 103°42-79'E 1°02-03'N 103°42-80'E
Delete	 <i>Rep (2003)</i>		1°07-69'N 103°46-63'E
<hr/>			
503	2Ed 15/09/04 Last 74/2008	(Admiralty Notices 23/2969/2008)	NM 112/2008
Substitute	range of light, 20M for 13M		1°13-15'N 104°34-60'E

II
NOTICES TO MARINERS AND CHART CORRECTIONS

(Admiralty Notices 28/3693/2008)

NM 115/2008

Insert



1°03-31'N

104°13-37'E

II
TEMPORARY AND PRELIMINARY NOTICES

Nil

III NAVIGATIONAL INFORMATION

*(NM 116/2008) PORT MARINE NOTICES

The following PMNs have been shortlisted, as they would be of particular interest to mariners.

These notices can be accessed directly from MPA website:

http://www.mpa.gov.sg/circulars_and_notices/portmarine_notices/pm_notices.htm

PMN No.	Subject
120/2008	Reclamation of Jurong Island Phase 4.
121/2008	Reclamation work at Tuas View extension.
122/2008	Marine construction works at Jurong Port, J1 Basin.
124/2008	Marine jetty (MJ10) construction works at Oiltanking ODFJELL, Jurong Island.
126/2008	Marine jetty construction works at Sakra Basin, Jurong Island.
130/2008	A) Rock-filling operations in West Keppel Fairway – SSD 7. B) Temporary Holding Area in Working Area “A” (off Labrador Park).
132/2008	Upgrading works at Vopak Penjuru Berth 3.

*(NM 117/2008) LAYING OF OPERATION (ASIA AMERICA GATEWAY) SUBMARINE CABLE – SINGAPORE (CHANGI FERRY TERMINAL) TO SINGAPORE STRAIT EASTWARDS

Date : This is an extension of Singapore Notice to Mariner No. 5/79/2008.
The working period is extended from 1 May 08 to 31 October 08.

- Cable laying and associated operations are in progress between the following positions (in WGS84) :

1°22.321'N	104°00.356'E
1°22.280'N	104°00.688'E
1°22.328'N	104°00.758'E
1°22.313'N	104°01.672'E
1°21.435'N	104°02.705'E
1°18.874'N	104°05.717'E
1°17.570'N	104°06.601'E
1°17.041'N	104°07.424'E
1°17.232'N	104°09.523'E
1°18.665'N	104°14.879'E
1°18.840'N	104°15.000'E
1°19.347'N	104°17.771'E
1°19.411'N	104°18.742'E
1°22.061'N	104°22.479'E
1°21.968'N	104°23.236'E
1°22.790'N	104°24.246'E
1°24.737'N	104°26.744'E
1°26.615'N	104°29.053'E
1°29.656'N	104°31.762'E
1°31.656'N	104°33.064'E
1°34.125'N	104°33.356'E
1°49.995'N	104°37.614'E

III NAVIGATIONAL INFORMATION

2. Charts affected : GSP1, SP1, 202, 502 and 503
3. Mariners are advised
 - (a) to navigate with caution
 - (b) not to anchor or trawl in the vicinity of the cable route.

Source : HD/DB67/018/2008

***(NM 118/2008) LAYING OF INTRA-ASIA SUBMARINE CABLE – SINGAPORE (TANAH MERAH FERRY TERMINAL) TO SINGAPORE STRAIT EASTWARDS**

Date : With effect from 1 August 08 to 31 October 08

1. Cable laying and associated operations are in progress between the following positions (in WGS84) :

1°19-000'N	103°58-539'E
1°18-658'N	103°58-534'E
1°18-401'N	103°59-338'E
1°18-536'N	103°59-476'E
1°18-448'N	104°00-088'E
1°16-697'N	104°03-039'E
1°17-140'N	104°05-591'E
1°16-872'N	104°05-890'E
1°17-016'N	104°07-021'E
1°16-640'N	104°07-800'E
1°17-309'N	104°09-829'E
1°17-127'N	104°10-642'E
1°17-732'N	104°17-947'E
1°18-983'N	104°20-600'E

2. Charts affected : GSP1, SP1, 202 , 502 and 503
3. Mariners are advised
 - (a) to navigate with caution
 - (b) not to anchor or trawl in the vicinity of the cable route.

Source : HD/DB67/028/2008

***(NM 119/2008) SINGAPOREAN PRINT ON DEMAND (POD) CHARTS**

Print On Demand (POD) Charts are the most up-to-date paper nautical charts printed for navigational use. These nautical charts are produced in accordance with the International Hydrographic Organisation (IHO) charting specifications. These official nautical charts are continually updated to the latest Notices to Mariners before they are printed and sold to users.

These POD Charts include 200, 201, 202, 500, 501, 502.

BENEFITS TO OUR CUSTOMERS

Convenience

Customers need not make numerous hand corrections to the nautical charts before use. In addition the updated POD Charts are more accurate and reliable than offset printed charts with hand corrections.

III
NAVIGATIONAL INFORMATION

Clarity

Clarity in the presentation of updated information as compared to lithographic printed charts, where in some cases there are several overlapping corrections over existing information.

Coverage

The POD Charts cover the Malacca and Singapore Straits, from One Fathom Bank to Horsburgh Lighthouse.

III AMENDMENTS TO PUBLICATIONS

***(NM 120/2008) UPDATING OF PUBLICATION "SINGAPORE PORT INFORMATION 2008/2009 EDITION"**

1 Page 134 – Item 2

KEPPEL TERMINAL (PSA Corporation Ltd) (1°16-0'N, 103°50-0'E)

Insert the following:

Berth	Depth Alongside (Year Surveyed)	
	Delete	Insert
K21	10.0m(2002)	9.6m(2007)
K22	10.1m(2002)	9.7m(2007)
K23	9.8m(2002)	9.9m(2008)

Source: HD/HY Code B00100808 and B00101208

2 Page 136 – Item 3

BRANI TERMINAL (PSA Corporation Ltd) (1°15-7'N, 103°50-2'E)

Insert the following:

Berth	Depth Alongside (Year Surveyed)	
	Delete	Insert
B1	10.7m(2003)	11.2m(2007)
B2	10.5m(2003)	10.7m(2007)
B4	14.5m(2004)	13.1m(2007)
B5	13.4m(2005)	12.7m(2007)
B7	14.6m(2003)	14.5m(2007)
B9	12.4m(2003)	12.1m(2007)

Source: HD/HY Code B00100808, B00100908 and B00101008

3 Page 143 – Item 13

TANJONG PENJURU (CHEVRON SINGAPORE PTE LTD)(1°17-7'N, 103°44-3'E)

Insert the following:

Berth	Depth Alongside (Year Surveyed)	
	Delete	Insert
1	13.6m(2007)	13.9m(2008)
5	11.0m(2007)	12.1m(2008)

Source: HD/HY Code H00101108

4 Page 146 – Item 24

**JURONG ISLAND – PULAU SERAYA POWER STATION (PSPS)
(PETRO SERAYA PTE LTD) (1°17-1'N, 103°43-5'E)**

Insert the following:

Berth	Depth Alongside (Year Surveyed)	
	Delete	Insert
1	14.8m(2004)	14.7m(2008)
2	12.3m(2004)	12.3m(2008)

Source: HD/HY Codes H00101208

IV
REPRINT OF RADIO NAVIGATIONAL WARNINGS

Nil

V
**REPRINT OF ADMIRALTY NOTICES TO MARINERS
 FOR DUAL BADGED CHARTS**

These notices can be accessed directly from UKHO Website:

<http://www.ukho.gov.uk/amd/weeklyNms.asp>

3664* SINGAPORE – Marina South, Westwards – Depths. Obstructions.

Source: Maritime and Port Authority of Singapore

Chart 4037 [*previous update 2286/08*] WGS84 DATUM

Insert	the accompanying block, showing amendments to depths and obstructions, centred on:	1° 16'.162N., 103° 51'.441E.
--------	--	------------------------------

4086* SINGAPORE – East Jurong Channel and Selat Sinki – Buoyage. Restricted area. Submarine pipeline. Submarine cables. Rock.

Source: Maritime and Port Authority of Singapore

Chart 4032 [*previous update New Edition 22/05/2008*] WGS84 DATUM

Insert	the accompanying block A, showing amendments to buoyage and restricted area, centred on:	1° 14'.01N., 103° 44'.42E.
	the accompanying block B, showing a new submarine pipeline and submarine cables, centred on:	1° 14'.49N., 103° 45'.80E.
	+ (25 ₀)	1° 16'.242N., 103° 45'.187E.

4149* SINGAPORE – West Jurong Channel – Depths. Legends.

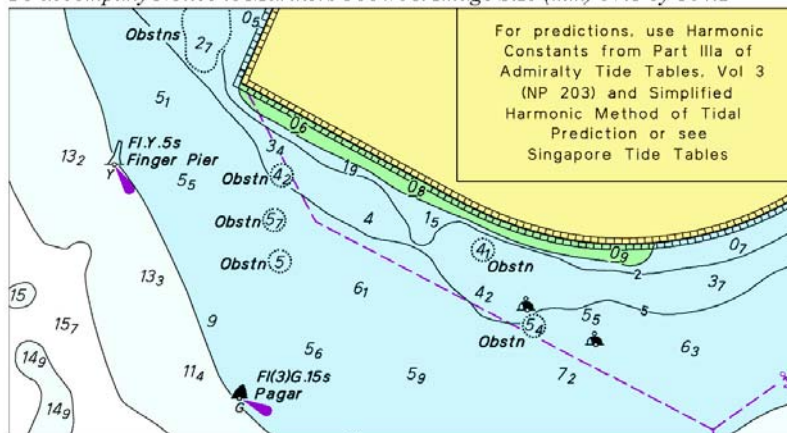
Source: Maritime and Port Authority of Singapore

Chart 4033 [*previous update New Edition 22/05/2008*] WGS84 DATUM

Insert	depth <i>1₁</i>	1° 17'.931N., 103° 41'.402E.
	depth <i>1</i>	1° 17'.895N., 103° 41'.399E.
Amend	legend to, 3.7m (2008), centred on:	1° 17'.953N., 103° 41'.524E.
	legend to, 8.6m (2008), centred on:	1° 17'.900N., 103° 41'.454E.
Delete	depth <i>2₆</i>	1° 17'.915N., 103° 41'.401E.

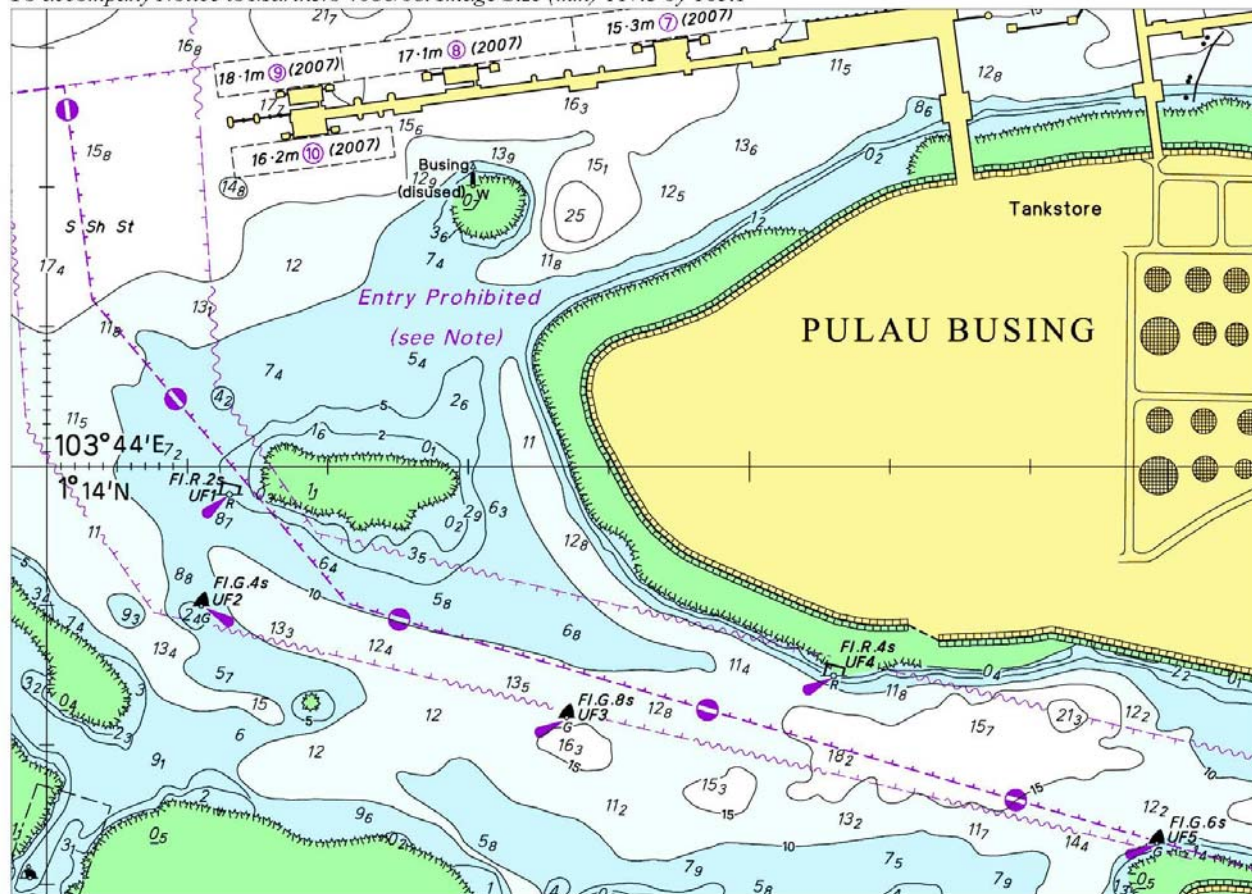
V
REPRINT OF ADMIRALTY NOTICES TO MARINERS
FOR DUAL BADGED CHARTS

To accompany Notice to Mariners 3664/08. Image Size (mm) 57.1 by 104.2



Block for Chart No 4037

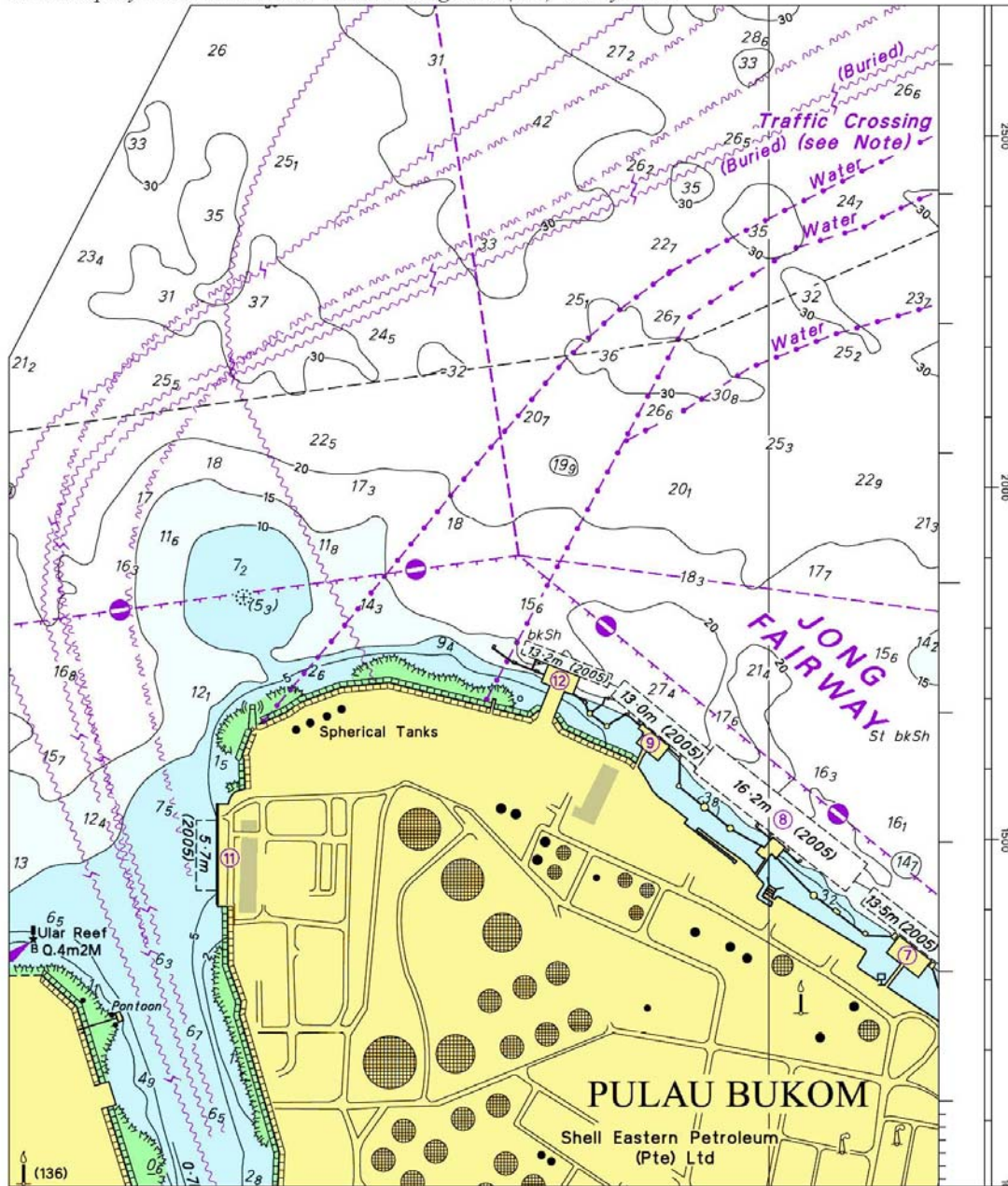
To accompany Notice to Mariners 4086/08. Image Size (mm) 117.3 by 165.1



Block A for Chart No 4032

V
REPRINT OF ADMIRALTY NOTICES TO MARINERS
FOR DUAL BADGED CHARTS

To accompany Notice to Mariners 4086/08. Image Size (mm) 168 by 143.2



Block B for Chart No 4032

SINGAPORE ELECTRONIC NAVIGATIONAL CHARTS (ENC) DISTRIBUTORS
Please approach any of the appointed distributors to purchase the Singapore ENC.

CONTACT PERSON/ DESIGNATION	ADDRESS	TELEPHONE/FAX NO./EMAIL/WEBSITE
Mr Chong Chee Meng General Manager	DPM (Singapore) Pte Ltd 1 Maritime Square, #09-72 Harbour Front Centre, Singapore 099253	Tel. No.: +65 6270 4060 Fax No.: +65 6276 3858 Email: sales@dpmsingapore.com.sg Website: http://www.dpmsingapore.com.sg
Mr Hamzah Akhbar MDS Branch Manager	Kelvin Hughes(S) Pte Ltd 8 Pandan Avenue #02-00, Singapore 609384	Tel. No.: +65 6545 9880 ext.24 Fax No.: +65 6545 8892 Email: hamzah.akhbar@khsing.com Website: http://www.kelvinhughes.co.uk
Mr Looi Keen Wai Regional Sales Manager	Maritime Information Systems (MARIS) 52, Telok Blangah Road #01-06, Telok Blangah Centre, Singapore 058809	Tel. No.: +65 6276 1472 Fax No.: +65 6276 1473 Email: support@maris.sg Website: http://www.maris.no
Ms Kathrine Bjaroy Marketing Coordinator	Maritime Information System AS (MARIS) Danholmen 25, 3128 Notteroy, Norway	Tel. No.: +47 33 30 42 50 Fax No.: +47 33 30 42 51 Email: roar.moe@maris.no Website: http://www.maris.no
Mr Bernard Wong Sales Manager	Motion Smith 15 Jalan Kilang Barat #08-01/05 Frontech Centre Singapore 159357	Tel. No.: +65 6220 5098 Fax No.: +65 6225 4902 Email: sales@motsmith.com Website: http://www.motsmith.com
Mr Dominic Oliver	Transas Marine Pacific Pte Ltd 750C Chai Chee Road, #04-07, Technopark@Chai Chee, Singapore 469003	Tel. No.: +65 6443 3061 Fax No.: +65 6443 3025 Email: dominic@transas.com.sg Website: http://www.transas.com.sg
Mr Choy Kum Weng Director	Vector Services Pte Ltd 15 West Coast Highway, #02-14A Pasir Panjang Building Singapore 117861	Tel. No.: +65 6777 3602 Fax No.: +65 6777 9203 Email: kwchoy@pacific.net.sg
Mr George Arts President	Marine Press of Canada 640 Rue St-Paul Ouest, Suite 300 Montreal (QC) Canada, H3C1L9	Tel. No.: (514) 866-8342 Fax No.: (514) 866-9050 Email : sales@marinepress.com Website: http://www.marinepress.com
Mr Thomas Wilde Superintendent	HanseNautic GmbH Bade & Hornig, Eckardt & Messtorff Herrengaben 31 D-20459 Hamburg, Germany	Tel. No.: +49 40 374 811-32 Fax No.: +49 40 366 400 Email: wilde@hansenautic.de Website : http://www.HanseNautic.com
Ms Verena Borsos Manager	SevenCs AG + Co. KG Ruhrstrasse 90, D-22761 Hamburg, Germany	Tel. No.: +49 40 853 58 6940 Fax No.: +49 40 853 58 6949 Email: sales@chartworld.com Website : http://www.sevencs.com
Mr Keiji Shimizu General Manager	Japan Hydrographic Association Electronic Charts Division Daiichi Sogo Bldg, 6F 1-6-6, Hanedakuko, Ota-ku, Tokyo 144-0041, Japan	Tel. No.: +81 3 5708 7093 Fax No.: +81 3 5708 7094 Email: enc-support@jha.jp Website: http://www.jha.jp

SINGAPORE ELECTRONIC NAVIGATIONAL CHARTS (ENC) DISTRIBUTORS
Please approach any of the appointed distributors to purchase the Singapore ENC.

CONTACT PERSON/ DESIGNATION	ADDRESS	TELEPHONE/FAX NO./EMAIL/WEBSITE
Mr Jester-Kim Foreign Business Department Manager	E_MLX Co. Ltd Ssangyong Research No.2 Lab Sinseong-Dong 100 Yusong-Gu, Daejoen 305-804, Korea (ROK)	Tel. No.: +82 42 865 1893 Fax No.: +82 42 865 1884 Email: Jester-kim@emlx.co.kr
Mr C G Kim Managing Director	Korean Ocean Development Co. Ltd 2ND Fl, Dongbang Bldg, 25-4, 4 Ga Jungang-Dong, Jung-Gu, Busan, South Korea	Tel. No.: +82 514 66 0760 Fax No.: +82 514 65 9345 Email: sales@chartkorea.com Website: http://www.chartkorea.com
Mr Kjell Nodland	Jeppesen Norway A/S P.O Box 212 , N-4379 Egersund, Norway	Tel No.: +47 514 64 700 Fax No: +47 514 64 701 Email: enc@c-map.no Website : http://www.c-map.no
Ms Eva Hegland Sales, order and distributor support.	PRIMAR STAVANGER Lervigsveien 36, P.O Box 60, N-4001 Stavanger, Norway	Tel. No.: +47 51 93 9500 Fax No.: +47 51 93 9501 Email: sales@primar.org Website : http://www.primar-stavanger.org
Mrs Christine Trickett Product Manager	United Kingdom Hydrographic Office Admiralty Way, Taunton, Somerset TA1 2DN United Kingdom	Tel. No.: +44 (0)1823 337900 Fax No.: +44 (0)1823 284077 Emails: vargroup@ukho.gov.uk & christine.trickett@ukho.gov.uk Website: http://www.ukho.gov.uk

Agents for the Maritime and Port Authority of Singapore Publications

Agent's name : **DPM (Singapore) Pte Ltd**
Address : 1 Maritime Square #09-72, HarbourFront Centre,
Singapore 099253
Telephone : (65) 6270 4060
Fax No. : (65) 6276 3858
E-mail : sales@dpmsingapore.com.sg
Internet Web Site : <http://www.dpmsingapore.com.sg>

Agent's name : **E.W. Liner Charts & Publications Pte Ltd**
Address : 102F, Pasir Panjang Road, #08-01, Citilink Warehouse Complex,
Singapore 118530
Telephone : (65) 6323 0773
Fax No. : (65) 6323 0775
E-mail : ewliner@singnet.com.sg
Internet Web Site : <http://www.ewliner.com>

Agent's name : **Motion Smith**
Address : 15 Jalan Kilang Barat
#08-01/05 Frontech Centre,
Singapore 159357
Telephone : (65) 6220 5098
: (After office hours: 8163 9993)
Fax No. : (65) 6225 4902
E-mail : sales@motsmith.com
Internet Web Site : <http://www.motsmith.com>

HYDROGRAPHIC NOTE - Instructions

1. Mariners are requested to notify the Chief Hydrographer, Maritime and Port Authority of Singapore, when new or suspected dangers to navigation are discovered, changes are observed in aids to navigation or where corrections to nautical publications may be necessary. Reports, which cannot be confirmed or are lacking in certain details should not be withheld.
2. Any ambiguities of time, positioning and depth should be stressed and any firm expectation of being able to check the information provided on a following voyage should be mentioned.
3. Mariners using satellite position fixing systems, eg. GPS, should provide details of equipment and datum used (where applicable). Where bearings (true or magnetic) are taken visually or by radar to fix a position, it should include more than two objects in order to provide a check on its accuracy. A position may also be defined by bearing and distance from a conspicuous object eg. beacon, lighthouse etc.
4. The note should include a tracing or a digital image of the chart used and the details should be clearly marked.
5. Echo sounders frequently register greater depths than the advertised maximum depth for the equipment, eg. a trace appearing at 50 metres may be in fact be 550 metres or even 1050 metres for equipment whose maximum depth is 500 metres. Erroneous depths caused by 2nd transmission error can usually be recognised by the following:
 - (a) the tracing being weaker than normal for the depth registered,
 - (b) the trace appearing to pass through the transmission line,
 - (c) the feathery nature of the trace.
6. An acknowledgement of receipt will be sent. When a Notice to Mariners is issued, the sender's vessel or name is quoted as the source unless the same information is also received in foreign Notices to Mariners.
7. Reports of shoals, uncharted dangers and defects in aids to navigation may also be made to the appropriate Singapore Port Operations Control Station on VHF Channels 10, 12, 14, 68 or 73.

HYDROGRAPHIC NOTE

To:

Chief Hydrographer
Hydrographic Department
Maritime and Port Authority of Singapore
460 Alexandra Road PSA Building #20-00
Singapore 119963

Tel : (65) 6375 1227
Fax : (65) 6278 7646
Email : hydrographic@mpa.gov.sg

Sender's Contact Details :

Date :

Name of Vessel :

Address of Sender :

Tel : Fax :

Email :

Nature of Observation :

General Location :

Subject :

Position : Lat. Long.

Charts Used :

Date & Time of Observation :

Details :

.....

.....

Attachment :

Equipment Used :

Type of Position Fixing : GPS / DGPS Others :

Type of Echo Sounder :

Name and Signature :

Ship's/Company's stamp :