



SINGAPOREAN NOTICES TO MARINERS

SECTION	CONTENT	Page
I	Index of Charts & Publications	150
II	New Publications	156
	Notices to Mariners and Chart Corrections	158
	Temporary and Preliminary Notices	160
III	Navigational Information	161
	Amendments to Publications	163
IV	Reprint of Radio Navigational Warnings	165
V	Reprint of Admiralty Notices to Mariners for Dual Badged Charts	166

The monthly Notices to Mariners contain corrective information affecting charts published by the Hydrographic Department, Maritime and Port Authority of Singapore. The information contained in these Notices should be updated on the charts affected. Notices under Section II apply only to the particular Singaporean Chart(s) indicated.

Mariners are requested to notify the Chief Hydrographer, Maritime and Port Authority of Singapore, immediately on the discovery of new dangers or suspected dangers to navigation and of changes or defects in aids to navigation. See Hydrographic Note on back page.

The monthly Singaporean Notices to Mariners can be accessed directly from the MPA website:
[http://www.mpa.gov.sg/sites/port_and_shipping/circulars_and_notices/singapore_notices_to_mariners\(ntm\).page](http://www.mpa.gov.sg/sites/port_and_shipping/circulars_and_notices/singapore_notices_to_mariners(ntm).page)

This service is offered free of charge.

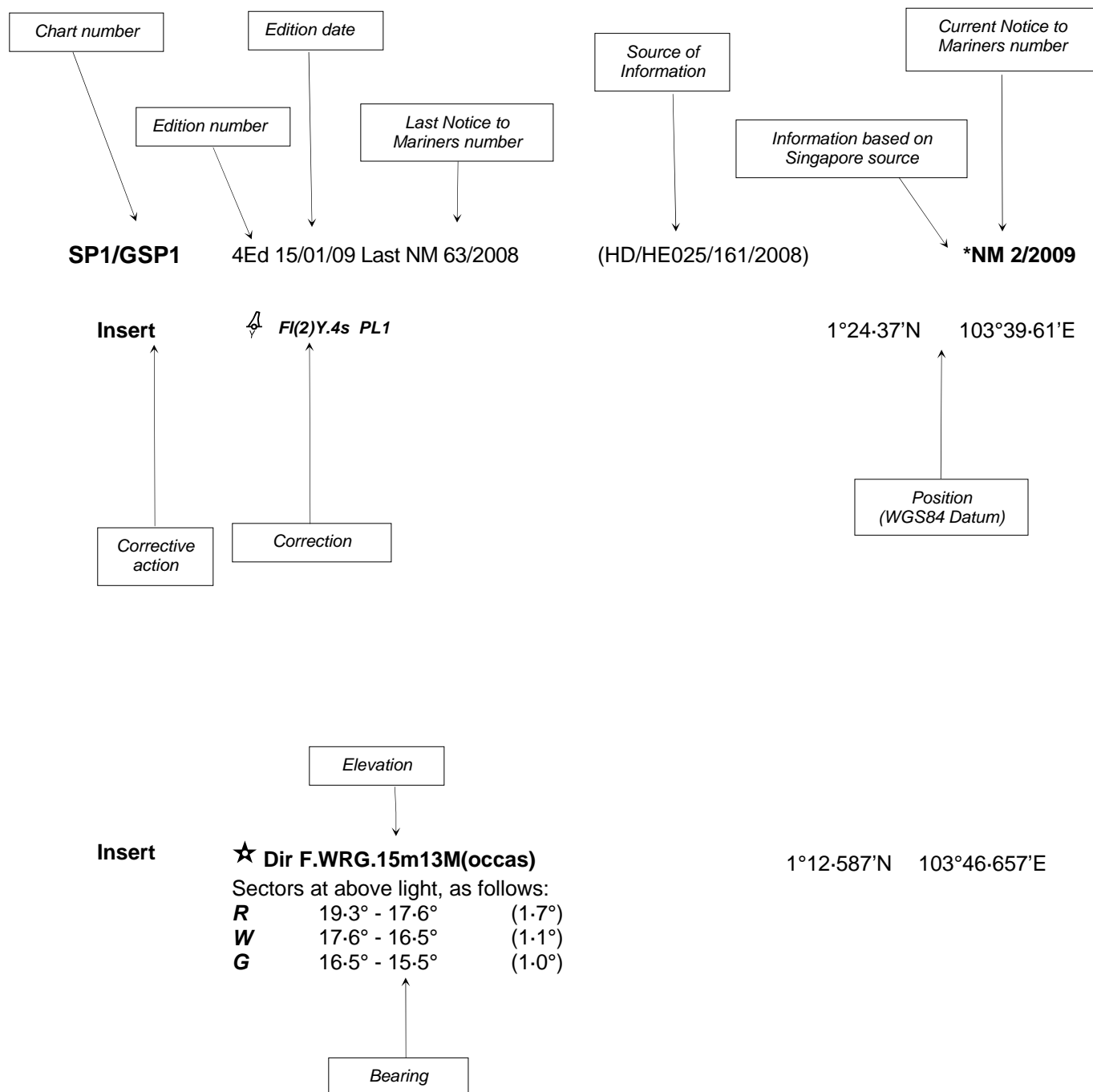
The Chief Hydrographer of
Maritime and Port Authority of Singapore
wishes all users of Singaporean and Dual Badged
Charts

A HAPPY SINGAPORE NATIONAL DAY

Hydrographic Department
Maritime and Port Authority of Singapore
460 Alexandra Road
PSA Building #20-00
Singapore 119963
Tel: (65) 6375 1227
Fax: (65) 6278 7646

EXPLANATION OF FORMAT

The elements of a typical chart correction are explained below.



Notes:

- Notice to Mariners number followed by:
T indicates a Temporary Notice (eg. ***NM 1T/2009**).
P indicates a Preliminary Notice (eg. ***NM 1P/2009**).
- Bearings are true reckoned clockwise from 000° to 359° ; those relating to lights are from seaward.
- Heights and elevations are above Mean High Water Springs.

I
INDEX OF CHARTS AND PUBLICATIONS

DESCRIPTION	NOTICE NO.	PAGE NO.
Index of Singaporean Charts	-	153
Index of Dual Badged Charts	-	154
Index of Singapore Electronic Navigational Charts (ENC)	-	155
New Edition Dual Badged Charts	-	156
Singaporean Chart SP1/GSP1	*72, *73	158
Singaporean Chart 200	74	158
Singaporean Chart 201	75, 76	158
Singaporean Chart 202	77, 78	158
Singaporean Chart 500	*73	158
Singaporean Chart 501	*73	158
Singaporean Chart 502	*79	159
Singaporean Chart 503	77, *79	159
Temporary and Preliminary Notices	-	160
Port Marine Notices	*80	161
Cable Laying and Repair Operations for Submarine Cables - Singapore (Changi Ferry Terminal) to Singapore Strait Eastwards	*81	161
Singaporean Print On Demand (POD) Charts	*82	161
3 rd ECDIS Conference and Exhibition (IEC 2009)	*83	162
Updating of Publication "SINGAPORE PORT INFORMATION 2008/2009 EDITION"	*84	163
Reprint of Radio Navigational Warnings	-	165
Reprint of Admiralty Notices to Mariners for Dual Badged Charts	-	166

* Denotes information are based on Singapore source.

I

INDEX OF CHARTS AND PUBLICATIONS

DESCRIPTION	NOTICE NO.	PAGE NO.
Singapore Electronic Navigational Charts (ENC) Distributors	-	169

* Denotes information are based on Singapore source.

INDEX OF CHARTS AND PUBLICATIONS

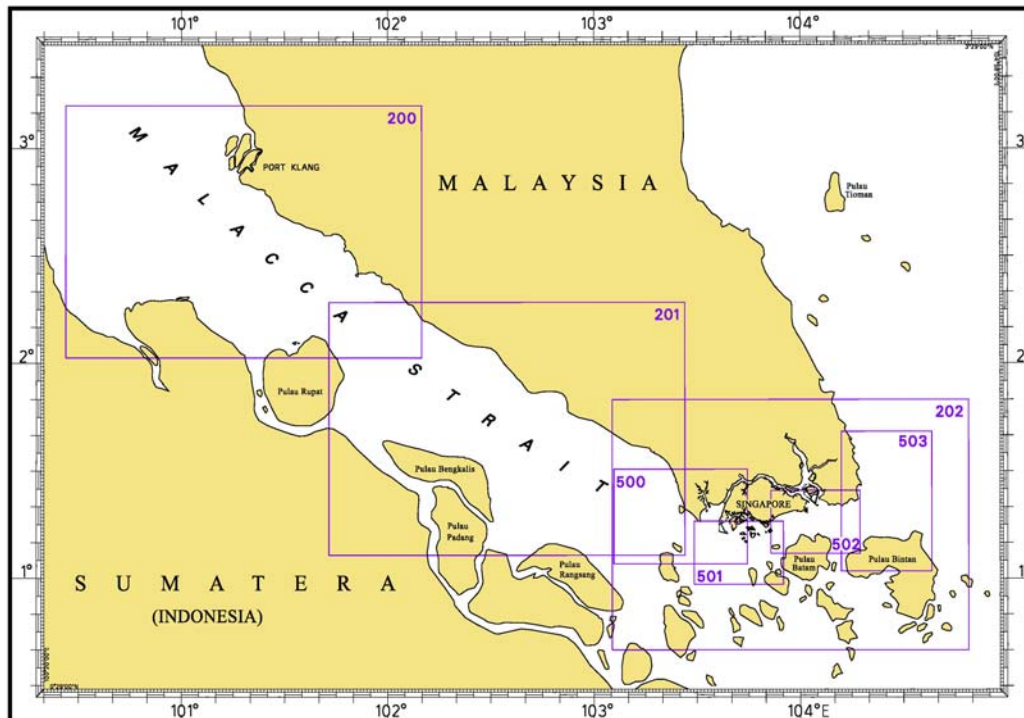
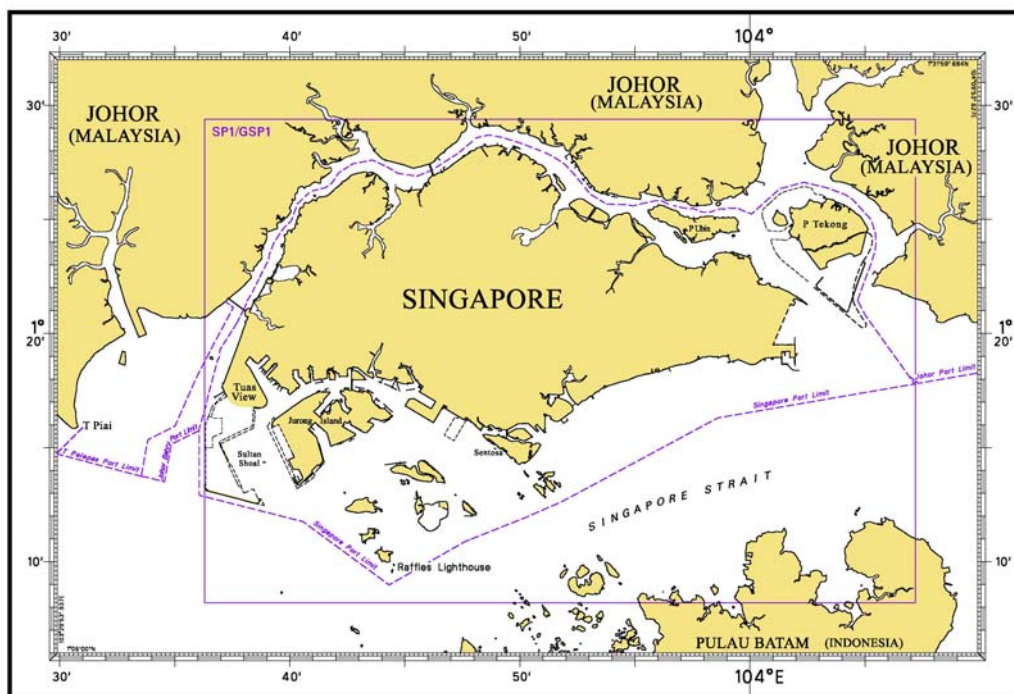
NOTICE NO.	DESCRIPTION	PAGE NO.	NOTICE NO.	DESCRIPTION	PAGE NO.
-	Index of Singaporean Charts	153	-	Reprint of Radio Navigational Warnings	165
-	Index of Dual Badged Charts	154	-	Reprint of Admiralty Notices to Mariners for Dual Badged Charts	166
-	Index of Singapore ENC 2009	155	-	Singapore Electronic Navigational Charts (ENC) Distributors	169
-	New Edition Dual Badged Charts	156			
*72	SP1/GSP1	158			
*73	SP1/GSP1, 500, 501	158			
74	200	158			
75	201	158			
76	201	158			
77	202, 503	157, 159			
78	202	157			
*79	502, 503	159			
-	Temporary and Preliminary Notices	160			
*80	Port Marine Notices	161			
*81	Cable Laying and Repair Operations for Submarine Cables - Singapore (Changi Ferry Terminal) to Singapore Strait Eastwards	161			
*82	Singaporean Print On Demand (POD) Charts	161			
*83	3 rd International ECDIS Conference and Exhibition (IEC 2009)	162			
*84	Updating of Publication "SINGAPORE PORT INFORMATION 2008/2009 EDITION"	163			

* Denotes information are based on Singapore source.

I

INDEX OF CHARTS AND PUBLICATIONS

INDEX OF SINGAPOREAN CHARTS



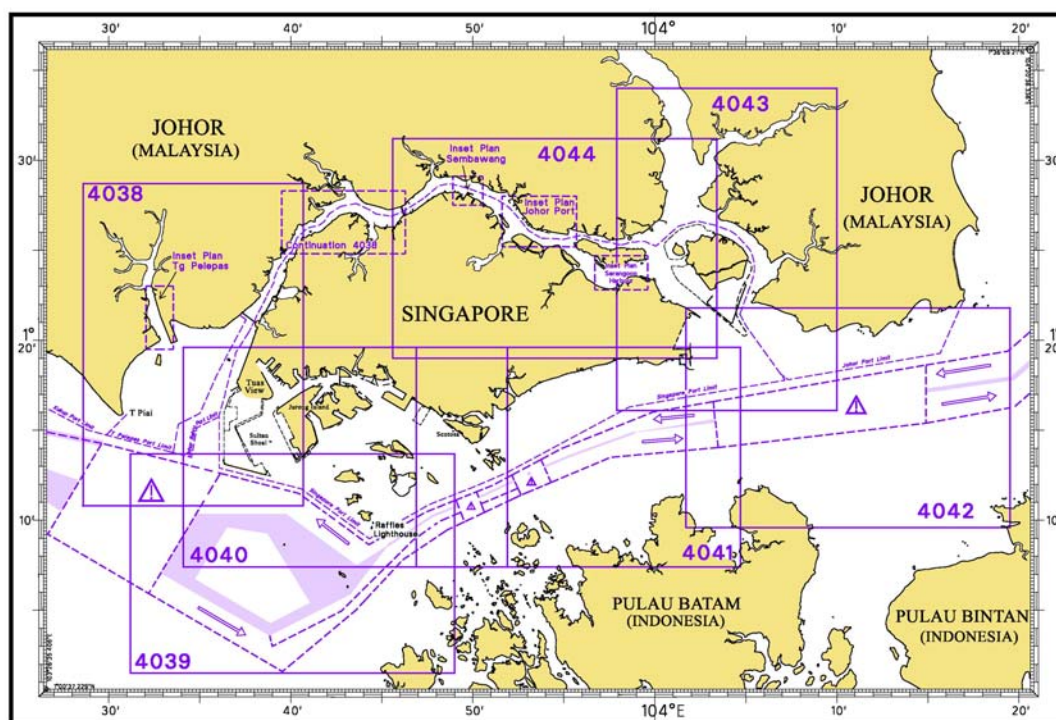
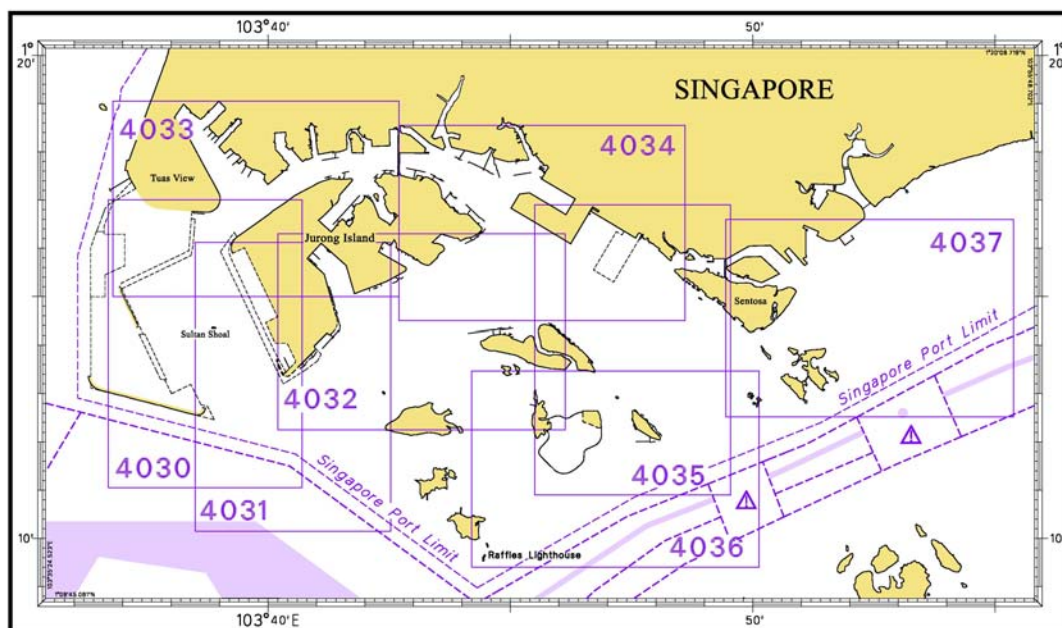
Notes:

Updated SINGAPOREAN Charts (excluding Charts SP1/GSP1) are available through our Print On Demand (POD) Chart Service. For more information, refer to Section III – Navigational Information and these charts can be purchased from our authorised Chart Agents:
DPM (Singapore) Pte Ltd, E.W. Liner Charts & Publications Pte Ltd and Motion Smith.

I

INDEX OF CHARTS AND PUBLICATIONS

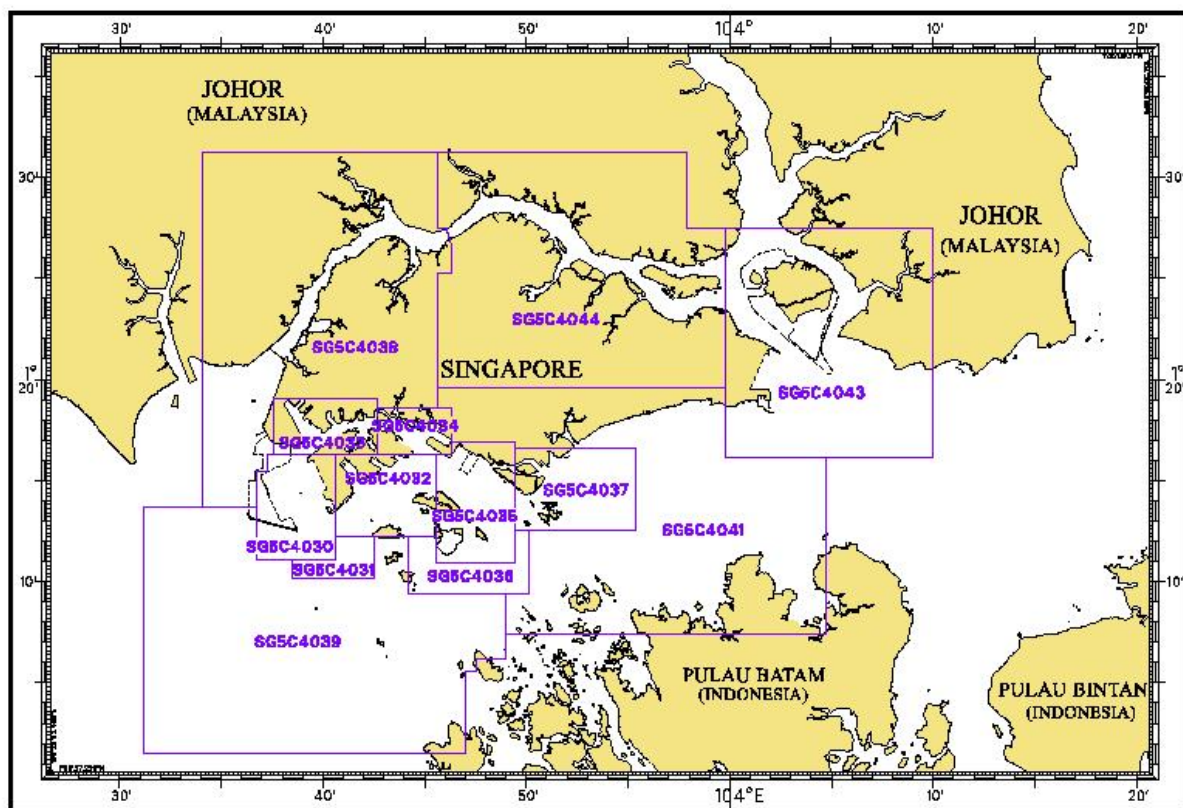
INDEX OF DUAL BADGED CHARTS



I

INDEX OF CHARTS AND PUBLICATIONS

INDEX OF SINGAPORE ELECTRONIC NAVIGATIONAL CHARTS (ENC)



II NEW PUBLICATIONS

NEW EDITION DUAL BADGED CHARTS PUBLISHED ON 23 JULY 2009

The following new edition charts are jointly produced by MPA, Hydrographic Department and the United Kingdom Hydrographic Office :

Chart Number	:	4039
Title	:	Indonesia, Singapore and Malaysia Western Approaches to Main Strait
Coverage	:	Lat 1° 01.50' N 1 ° 13.70' N Long 103° 31.20' E 103° 49.00' E
Scale	:	1 : 30 000
Date Published	:	23 July 2009
Size of Chart	:	1100.7 x 749.5mm
Remarks	:	This new edition includes updated surveys covering these areas : <ul style="list-style-type: none"> • South of Tuas View Extension • Shell SBM • South of Pulau Bukom • Selat Sinki

The existing chart of the same number published on 29th March 2007 is superseded.

Chart Number	:	4040
Title	:	Singapore, Indonesia and Malaysia Tuas View to Pulau Sakijang Bendera (S. John's Island)
Coverage	:	Lat 1°07.40'N 1°19.60'N Long 103°34.10'E 103°51.90'E
Scale	:	1 : 30 000
Date Published	:	23 July 2009
Size of Chart	:	1100.6 X 749.5 mm
Remarks	:	This new edition includes updated surveys covering these areas : <ul style="list-style-type: none"> • South of Tuas View Extension • Shell SBM • South of Pulau Bukom • West Keppel Fairway • Sisters Fairway • Southern Fairway • West of Sentosa • Approaches to Jong Fairway • Selat Sinki

The existing chart of the same number published on 24th July 2008 is superseded.

II NEW PUBLICATIONS

NEW EDITION DUAL BADGED CHARTS PUBLISHED ON 23 JULY 2009

The following new edition charts are jointly produced by MPA, Hydrographic Department and the United Kingdom Hydrographic Office :

Chart Number	:	4041
Title	:	Singapore and Indonesia Pulau Sebarok to Changi
Coverage	:	Lat 1° 07.40' N 1° 19.60' N Long 103° 46.90' E 104° 04.70' E
Scale	:	1 : 30 000
Date Published	:	23 July 2009
Size of Chart	:	1100.6 x 749.5 mm
Remarks	:	This new edition includes updated surveys covering these areas : <ul style="list-style-type: none"> • Shell SBM • Southern Fairway • East Keppel Fairway • West of Sentosa • Approaches to the Eastern Anchorages • Changi Prohibited Area • Eastern Cable Corridor

The existing chart of the same number published on 24th July 2008 is superseded.

Chart Number	:	4043
Title	:	Malaysia and Singapore Kuala Johor and Sungai Johor
Coverage	:	Lat 1°16.10' N 1°34.00' N Long 103°57.90' E 104°10.00' E
Scale	:	1 : 30 000
Date Published	:	23 July 2009
Size of Chart	:	748.1 X 1099.6 mm
Remarks	:	This new edition includes updated surveys covering these areas : <ul style="list-style-type: none"> • Around Pulau Tekong • Kuala Johor • North of Pulau Ubin

The existing chart of the same number published on 5th July 2007 is superseded.

Chart Number	:	4044
Title	:	Singapore and Malaysia Johor Strait, Eastern Part
Coverage	:	Lat 1° 19.00' N 1° 31.20' N Long 103° 45.60' E 104° 03.40' E
Scale	:	1 : 30 000
Date Published	:	23 July 2009
Size of Chart	:	1100.5 x 749.5 mm
Remarks	:	This new edition includes updated surveys covering these areas : <ul style="list-style-type: none"> • Johor Causeway to Serangoon Harbour • Kuala Johor • North of Pulau Ubin

The existing chart of the same number published on 22nd February 2007 is superseded.

II NOTICES TO MARINERS AND CHART CORRECTIONS


SP1/GSP1 4Ed 15/01/09 Last NM 61/2009 (HD/HE025/73/2009) ***NM 72/2009**

Substitute **white triangle topmark pointing upwards** for white triangle topmark pointing downwards on Beacon. 1°27-64'N 103°49-25'E

(HD/HE025/76/2009) ***NM 73/2009**

Delete  *Fl. Y. 2s Satumu* 1°09-43'N 103°44-41'E

200 2Ed 30/11/05 Last NM 52/2009 Royal Malaysian Navy NM Edition 6 of 2009 (Section IV) **NM 74/2009**

Substitute  **Q.13m11M** for Q.13m12M 2°48-65'N 100°56-48'E

201 3Ed 5/10/07 Last NM 62/2009 MSSENC **NM 75/2009**

Insert depth **25** enclosed by 30m contour 1°51-00'N 102°02-84'E

MSSENC **NM 76/2009**

Delete  Fl. 7,5s31m15M 1°15-90'N 102°39-13'E

202 5Ed 19/10/06 Last NM 62/2009 MSSENC **NM 77/2009**

Insert  **Obstn Rep PA** 1°28-70'N 104°25-56'E

(Admiralty Notices 30/3789/2009) **NM 78/2009**

Delete  Fl. 5s 0°48-36'N 103°08-49'E



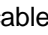
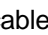
500 5Ed 30/08/07 Last NM 63/2009 (HD/HE025/76/2009) ***NM 73/2009**




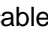
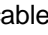
Delete  *Fl. Y. 2s Satumu* 1°09-43'N 103°44-41'E

501 5Ed 30/08/07 Last NM 63/2009 (HD/HE025/76/2009) ***NM 73/2009**

Delete  *Fl. Y. 2s Satumu* 1°09-43'N 103°44-41'E

II NOTICES TO MARINERS AND CHART CORRECTIONS

502	4Ed 25/09/08 Last NM 54/2009 (HD/HY/L00902209)	*NM 79/2009
Insert	submarine cable,  , joining	1°18.77'N 104°13.90'E (existing cable) 1°18.48'N 104°14.06'E 1°18.20'N 104°14.21'E (existing cable)
	submarine cable,  , joining	1°17.18'N 104°16.34'E (existing cable) 1°17.33'N 104°17.31'E (Chart border)
Delete	former submarine cable,  , joining	1°18.77'N 104°13.90'E 1°18.48'N 104°14.66'E 1°18.20'N 104°14.21'E
	former submarine cable,  , joining	1°17.18'N 104°16.34'E 1°17.38'N 104°16.63'E 1°17.47'N 104°17.31'E

503	3Ed 25/09/08 Last NM 54/2009 MSSENC	NM 77/2009
Insert	 Obstn Rep PA	1°28.70'N 104°25.56'E
	(HD/HY/L00902209)	*NM 79/2009
Insert	submarine cable,  , joining	1°18.77'N 104°13.90'E (existing cable) 1°18.48'N 104°14.06'E 1°18.20'N 104°14.21'E (existing cable)
	submarine cable,  , joining	1°17.18'N 104°16.34'E (existing cable) 1°17.38'N 104°17.63'E 1°17.52'N 104°17.70'E (existing cable)
Delete	former submarine cable,  , joining	1°18.77'N 104°13.90'E 1°18.48'N 104°14.66'E 1°18.20'N 104°14.21'E
	former submarine cable,  , joining	1°17.18'N 104°16.34'E 1°17.38'N 104°16.63'E 1°17.52'N 104°17.70'E

II
TEMPORARY AND PRELIMINARY NOTICES

Nil

III NAVIGATIONAL INFORMATION

*(NM 80/2009) PORT MARINE NOTICES

The following PMNs have been shortlisted, as they would be of particular interest to mariners.

These notices can be accessed directly from MPA website:

http://www.mpa.gov.sg/sites/port_and_shipping/circulars_and_notices/port_marine_notices.page

PMN No.	Subject
79/2009	Sand mining at Area 1 and dumping at Pasir Panjang Terminal Project Working Area.
81/2009	Reclamation of Jurong Island Phase 4.
83/2009	Reclamation at Pasir Panjang Terminal and Pasir Panjang Wharves.
87/2009	Soil investigation works at Marina Wharf.
89/2009	Marine construction works off Marina Barrage.
98/2009	Submarine Cable Repair off Singapore Waters.

*(NM 81/2009) CABLE LAYING AND REPAIR OPERATIONS FOR SUBMARINE CABLES – SINGAPORE (CHANGI FERRY TERMINAL) TO SINGAPORE STRAIT EASTWARDS

Date : With effect from 31 July 09 to 3 September 09.

- Cable laying and repair operations are in progress in the following area (in WGS84) :

1°17-800'N	104°06-647'E to
1°17-546'N	104°06-785'E to
1°17-419'N	104°06-514'E to
1°17-625'N	104°06-411'E

- Charts affected : SP1/GSP1, 202, 502
- Mariners are advised
 - to navigate with caution
 - not to anchor or trawl in the vicinity of the cable route

Source : HD/DB67/5/2009 and HD/DB67/6/2009

*(NM 82/2009) SINGAPOREAN PRINT ON DEMAND (POD) CHARTS

Print On Demand (POD) Charts are the most up-to-date paper nautical charts printed for navigational use. These nautical charts are produced in accordance with the International Hydrographic Organisation (IHO) charting specifications. These official nautical charts are continually updated to the latest Notices to Mariners before they are printed and sold to users.

These POD Charts include 200, 201, 202, 500, 501, 502, 503.

III NAVIGATIONAL INFORMATION

BENEFITS TO OUR CUSTOMERS

Convenience

Customers need not make numerous hand corrections to the nautical charts before use. In addition the updated POD Charts are more accurate and reliable than offset printed charts with hand corrections.

Clarity

Clarity in the presentation of updated information as compared to lithographic printed charts, where in some cases there are several overlapping corrections over existing information.

Coverage

The POD Charts cover the Malacca and Singapore Straits, from One Fathom Bank to Horsburgh Lighthouse.

***(NM 83/2009) 3RD INTERNATIONAL ECDIS CONFERENCE AND EXHIBITION (IEC 2009)**

The conference

New legislation to mandate the carriage of ECDIS has huge implications for the shipping industry but also significant opportunities for safer, more efficient, more cost-effective fleet operations. In addition, ECDIS systems are increasingly offering more and more features and functionality that far exceed basic navigation.

The 3rd International ECDIS Conference and Exhibition will enable you to learn how to get the most from your fleet's transition to ECDIS and e-Navigation transition and discover what ECDIS has to offer beyond regulatory compliance and its core navigational benefits.

When

19th – 21st Oct 2009

Where

The Regent Singapore

Who should attend

- | | |
|--|----------------------------------|
| ▪ Shipping Companies | ▪ Navies |
| ▪ Ship Owners | ▪ ECDIS Manufacturers |
| ▪ Charterers | ▪ Hydrographic Offices |
| ▪ Marine Superintendents | ▪ Academic Institutions |
| ▪ IT Managers | ▪ Port Authorities |
| ▪ Consultants & Contractors | ▪ Maritime Safety Agencies |
| ▪ Official Electronic Chart Producers & Distributors | ▪ Marine Equipment Manufacturers |

Why you should attend

The conference provides opportunity to hear influential names from shipping, hydrography, equipment manufacturers and chart distributors as well as the opportunity to network and exchange ideas with your peers from across the industry on both current ECDIS applications and its future development. Speakers and panelists have been handpicked for their invaluable insights and unique perspectives on the latest developments, technologies and trends.

Please visit <http://www.ecdis09.com> for more details regarding the event.

III AMENDMENTS TO PUBLICATIONS

***(NM 84/2009) UPDATING OF PUBLICATION “SINGAPORE PORT INFORMATION 2008/2009 EDITION”**

1. Page 116

**CHARACTERISTICS OF AIDS TO NAVIGATION
SINKI FAIRWAY**

Insert the following :

	Position	
	Delete	Insert
East Seraya Beacon	01°16.403' N 103°44.484' E	01°16.402' N 103°44.481' E

Source : Singapore Notices to Mariners No. 6/59/2002

2. Page 133 – Item 1

TANJONG PAGAR TERMINAL (PSA Corporation Ltd) (1°16.0'N, 103°51.0'E)

Insert the following :

Berth	Depth Alongside (Year Surveyed)	
	Delete	Insert
T6	13.6m(2002)	13.6m(2009)

Source : HD/HY Code B00107409

3. Page 136 – Item 3

BRANI TERMINAL (PSA Corporation Ltd) (1°15.7'N, 103°50.2'E)

Insert the following :

Berth	Depth Alongside (Year Surveyed)	
	Delete	Insert
B9	12.4m(2009)	12.1m(2009)

Source : HD/HY Code B00108709

4. Page 139 – Item 7

PASIR PANJANG TERMINAL (PSA Corporation Ltd) (1°17.2'N, 103°46.1'E)

Insert the following :

Berth	Length of Berth	Depth Alongside (Year Surveyed)	Controlling Depth In Approaches
P13	308m	15.0m(2008)	-

Source : HD/HY Code C00113708

III AMENDMENTS TO PUBLICATIONS

5. Page 145 – Item 20

Insert the following :

JURONG TERMINAL (Jurong Port Pte Ltd) (1°18.3'N, 103°43.1'E)

Berth	Depth Alongside (Year Surveyed)	
	Delete	Insert
J12A	9.8m(2008)	11.1m(2009)
J12B	10.6m(2008)	11.4m(2009)

Source : HD/HY Code J00103509

6. Page 146 – Item 21

Insert the following :

JURONG ISLAND (OILTANKING SINGAPORE LTD)(1°16.8'N, 103°44.1'E)

Berth	Length of Berth	Depth Alongside (Year Surveyed)	Controlling Depth In Approaches
MJ10	220m	12.4m(2009)	-

Source : HD/HY Code H00101509

IV
REPRINT OF RADIO NAVIGATIONAL WARNINGS

TT173

VSLs IN EAST JOHOR STRAIT ARE ADVISED TO NAVIGATE WITH CAUTION WHEN NEAR THE PROJECT AREAS OFF PU.TEKONG, PU.SERANGOON, CHANGI AND MALANG PAPAN AS SHALLOW WATER AREAS EXIST. VSLs ARE ADVISED TO KEEP LOOKOUT FOR TUGS AND BARGES NAVIGATING NEAR THE PROJECT AREAS AND PASSENGER FERRIES CROSSING BETWEEN CHANGI AND PULAU TEKONG AND VICINITY OF PASIR GUDANG.

TT352

DAYMARK SIGNALS AT RAFFLES LIGHT HOUSE IS OUT OF ORDER.

TT611

A SHIP REPORTED LOSING HER PORT ANCHOR AND 12 SHACKLES OF ANCHOR CHAIN, IN APROX POSN 01°11.55'N 103°52.52'E, OFF BATU BERHENTI BEACON.

TT619

DREDGER GERARDUS MERCATOR/QUEEN OF PENTA OCEAN IS CONDUCTING DREDGING OPERATIONS IN POSITIONS BOUNDED BY COORDINATES:

01°15.827' N 103°57.737' E

01°14.865' N 103°58.134' E

01°13.298' N 103°54.401' E

01°13.884' N 103°54.131' E

VESSELS ARE ADVISED TO PROCEED AT SAFE SPEED AND TO GIVE A WIDE BERTH.

TT753

A SMALL WOODEN CARGO BOAT 10M IN LENGTH SUNK AT 01°15.73'N 103°32.1'E.

TT755 (AMENDED 180109 1314Z)

THE POSITION OF THE PROBABLE SUNKEN CRAFT IS LAT 01°18.71'N LONG 104°21.54'E WITH A LEAST DEPTH OF 57 METRES.

TT757

A TUG WAS REPORTED SUNK IN LAT 01°22.41'N LONG 104°23.15'E.

TT800 (AMENDED 100200Z)

CABLE SHIP "SUBARU" IS CONDUCTING CABLE REPAIR OPERATIONS IN THE TSS AT POSN 01°22.03'N 104°22.44'E. ALL VSLs APPROACHING THE VICINITY ARE ADVISED TO PROCEED AT A SAFE SPEED AND TO GIVE A WIDE BERTH.

ISSUED BY SINGAPORE PORT OPERATIONS CONTROL CENTRE
(as at 19 July 2009)

V
REPRINT OF ADMIRALTY NOTICES TO MARINERS
FOR DUAL BADGED CHARTS



These notices can be accessed directly from UKHO Website:

<http://www.ukho.gov.uk/ProductsandServices/MaritimeSafety/Pages/NMPublic.aspx>

3352* SINGAPORE STRAIT – Malaysia – Tanjung Bulat South-eastwards – Submarine cable.

Source: Maritime and Port Authority of Singapore

Chart 4042 [previous update 2269/09] WGS84 DATUM

Insert	submarine cable,  , joining:	1° 18'.97N., 104° 13'.79E. (existing cable) 1° 18'.77N., 104° 13'.90E. 1° 18'.48N., 104° 14'.66E. 1° 18'.20N., 104° 14'.21E. 1° 16'.95N., 104° 14'.90E. 1° 17'.18N., 104° 16'.34E. 1° 17'.38N., 104° 16'.63E. 1° 17'.52N., 104° 17'.70E. 1° 17'.41N., 104° 17'.79E. (a) 1° 17'.44N., 104° 18'.02E. (existing cable)
Delete	former submarine cable,  , joining:	1° 18'.96N., 104° 13'.72E. 1° 19'.07N., 104° 14'.39E. 1° 19'.24N., 104° 15'.01E. 1° 19'.25N., 104° 15'.49E. 1° 19'.33N., 104° 15'.77E. 1° 19'.19N., 104° 15'.79E. 1° 19'.17N., 104° 15'.91E. 1° 18'.05N., 104° 16'.74E. 1° 17'.86N., 104° 17'.35E. (a) above

3353* SINGAPORE – Jong Fairway – Western Approaches – Buoyage. Light-beacon. Rock. Depths. Wreck.

Light List Vol. F, 2008/09, 1701.86

Source: Maritime Port Authority of Singapore

Chart 4032 [previous update 2419/09] WGS84 DATUM

Delete	 Fl.Y.6s ECC 2	1° 13'.509N., 103° 45'.675E.
	 Fl.Y.8s ECC 3	1° 13'.668N., 103° 45'.276E.
	 Fl.Y.4s ECC 4	1° 13'.460N., 103° 45'.319E.

Chart 4034 [previous update 2421/09] WGS84 DATUM

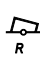

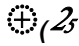
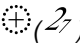

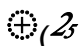
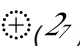
Substitute	 Fl.(2)R.5s PKHV5 for  Fl.R.2.5s6m4M Ampang	1° 16'.148N., 103° 47'.654E.
	 (25) for  (27)	1° 15'.725N., 103° 48'.270E.
	depth 14 enclosed by 15m contour for depth 15 enclosed by 15m contour	1° 16'.660N., 103° 45'.115E.

Chart 4035 [previous update 2421/09] WGS84 DATUM

Substitute	depth 14 for depth 15	1° 14'.460N., 103° 46'.303E.
	 Fl.(2)R.5s PKHV5 for  Fl.R.2.5s6m4M Ampang	1° 16'.148N., 103° 47'.654E.
Substitute	 (25) for  (27)	1° 15'.725N., 103° 48'.270E.

V
REPRINT OF ADMIRALTY NOTICES TO MARINERS
FOR DUAL BADGED CHARTS

Delete	 <i>Fl(2)Y.4s ECC 1</i>	1° 13'.150N., 103° 46'.726E.
	 <i>Fl.Y.6s ECC 2</i>	1° 13'.509N., 103° 45'.675E.

Chart 4036 [*previous update New Edition 21/05/2009*] WGS84 DATUM

Delete	 <i>Fl(2)Y.4s ECC 1</i>	1° 13'.150N., 103° 46'.726E.
	 <i>Fl.Y.4s ECC 4</i>	1° 13'.460N., 103° 45'.319E.

Chart 4039 [*previous update 6700/08*] WGS84 DATUM

Substitute	 <i>Wk</i> for  <i>Wk</i>	1° 12'.08N., 103° 48'.22E.
Delete	 <i>Fl(2)Y.4s ECC 1</i>	1° 13'.15N., 103° 46'.70E.

Chart 4040 [*previous update 2421/08*] WGS84 DATUM



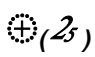
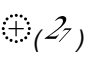



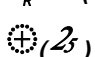
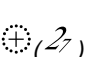
Substitute	depth <i>14s</i> for depth <i>15₂</i>	1° 14'.46N., 103° 46'.30E.
	 <i>Fl(2)R.5s PKHV5</i> for  <i>Fl.R Ampang</i>	1° 16'.15N., 103° 47'.65E.
	 <i>(2.5)</i> for  <i>(2.7)</i>	1° 15'.73N., 103° 48'.27E.
Delete	 <i>Fl(2)Y.4s ECC 1</i>	1° 13'.15N., 103° 46'.70E.

Chart 4041 [*previous update 2421/08*] WGS84 DATUM

Substitute	 <i>Fl(2)R.5s PKHV5</i> for  <i>Fl.R Ampang</i>	1° 16'.15N., 103° 47'.65E.
	 <i>(2.5)</i> for  <i>(2.7)</i>	1° 15'.73N., 103° 48'.27E.

3731* MALAYSIA – Peninsular Malaysia, West Coast – Johor – Pelabuhan Tanjung Pelepas – Dredged depth.
 Source: Port of Tanjung Pelepas

Chart 4038 (plan B, Pelabuhan Tanjung Pelepas) [*previous update 2418/09*] WGS84 DATUM

Amend	legend to, <i>Dredged to 15.0m (2009)</i>	1° 22'.0N., 103° 32'.5E.
-------	--	--------------------------

Chart 4038 [*previous update 2418/09*] WGS84 DATUM

Amend	dredged depth to, <i>15.0m (2009)</i>	1° 22'.0N., 103° 32'.5E.
-------	--	--------------------------

Updated to Admiralty Notices to Mariners Edition No. 31 of 2009 dated 30 July 2009.

SINGAPORE ELECTRONIC NAVIGATIONAL CHARTS (ENC) DISTRIBUTORS
Please approach any of the appointed distributors to purchase the Singapore ENC.

CONTACT PERSON	ADDRESS	TELEPHONE/FAX NO./EMAIL/WEBSITE
Mr Chong Chee Meng	DPM (Singapore) Pte Ltd 1 Maritime Square, #09-72 Harbour Front Centre, Singapore 099253	Tel. No.: +65 6270 4060 Fax No.: +65 6276 3858 Email: sales@dpmsingapore.com.sg Website: http://www.dpmsingapore.com.sg
Mr Hamzah Akhbar	Kelvin Hughes(S) Pte Ltd 8 Pandan Avenue #02-00, Singapore 609384	Tel. No.: +65 6545 9880 ext.24 Fax No.: +65 6545 8892 Email: hamzah.akhbar@khsing.com Website: http://www.kelvinhughes.co.uk
Mr Looi Keen Wai	Maritime Information Systems (MARIS) 52, Telok Blangah Road #01-06, Telok Blangah Centre, Singapore 058809	Tel. No.: +65 6276 1472 Fax No.: +65 6276 1473 Email: support@maris.sg Website: http://www.maris.no
Ms Kathrine Bjaroy	Maritime Information System AS (MARIS) Danholmen 25, 3128 Notteroy, Norway	Tel. No.: +47 33 30 42 50 Fax No.: +47 33 30 42 51 Email: roar.moe@maris.no Website: http://www.maris.no
Mr Dave Chow En Wai	Motion Smith 15 Jalan Kilang Barat #08-01/05 Frontech Centre Singapore 159357	Tel. No.: +65 6220 5098 Fax No.: +65 6225 4902 Email: sales@motsmith.com Website: http://www.motsmith.com
Mr Dominic Oliver	Transas Marine Pacific Pte Ltd 750C Chai Chee Road, #04-07, Technopark@Chai Chee, Singapore 469003	Tel. No.: +65 6443 3061 Fax No.: +65 6443 3025 Email: dominic@transas.com.sg Website: http://www.transas.com.sg
Mr Choy Kum Weng	Vector Services Pte Ltd 15 West Coast Highway, #02-14A Pasir Panjang Building Singapore 117861	Tel. No.: +65 6777 3602 Fax No.: +65 6777 9203 Email: kwchoy@pacific.net.sg
Mr George Arts	Marine Press of Canada 640 Rue St-Paul Ouest, Suite 300 Montreal (QC) Canada, H3C1L9	Tel. No.: (514) 866-8342 Fax No.: (514) 866-9050 Email : sales@marinepress.com Website: http://www.marinepress.com
Mr Thomas Wilde	HanseNautic GmbH Bade & Hornig, Eckardt & Messtorff Herrengarten 31 D-20459 Hamburg, Germany	Tel. No.: +49 40 374 811-32 Fax No.: +49 40 366 400 Email: wilde@hansenautic.de Website : http://www.HanseNautic.com
Ms Verena Borsos	SevenCs AG + Co. KG Ruhrstrasse 90, D-22761 Hamburg, Germany	Tel. No.: +49 40 853 58 6940 Fax No.: +49 40 853 58 6949 Email: sales@chartworld.com Website : http://www.sevencs.com
Mr Keiji Shimizu	Japan Hydrographic Association Electronic Charts Division Daiichi Sogo Bldg, 6F 1-6-6, Hanedakuko, Ota-ku, Tokyo 144-0041, Japan	Tel. No.: +81 3 5708 7093 Fax No.: +81 3 5708 7094 Email: enc-support@jha.jp Website: http://www.jha.jp

SINGAPORE ELECTRONIC NAVIGATIONAL CHARTS (ENC) DISTRIBUTORS

Please approach any of the appointed distributors to purchase the Singapore ENC.

CONTACT PERSON	ADDRESS	TELEPHONE/FAX NO./EMAIL/WEBSITE
Mr Jester-Kim	E_MLX Co. Ltd Ssangyong Research No.2 Lab Sinseong-Dong 100 Yusong-Gu, Daejeon 305-804, Korea (ROK)	Tel. No.: +82 42 865 1893 Fax No.: +82 42 865 1884 Email: Jester-kim@emlx.co.kr
Mr C G Kim	Korean Ocean Development Co. Ltd 2ND Fl, Dongbang Bldg, 25-4, 4 Ga Jungang-Dong, Jung-Gu, Busan, South Korea	Tel. No.: +82 514 66 0760 Fax No.: +82 514 65 9345 Email: sales@chartkorea.com Website: http://www.chartkorea.com
Mr Kjell Nodland	Jeppesen Norway A/S P.O Box 212 , N-4379 Egersund, Norway	Tel No.: +47 514 64 700 Fax No: +47 514 64 701 Email: enc@c-map.no Website : http://www.c-map.no
Ms Eva Hegland	PRIMAR STAVANGER Lervigsveien 36, P.O Box 60, N-4001 Stavanger, Norway	Tel. No.: +47 51 93 9500 Fax No.: +47 51 93 9501 Email: sales@primar.org Website : http://www.primar-stavanger.org
Mrs Christine Trickett	United Kingdom Hydrographic Office Admiralty Way, Taunton, Somerset TA1 2DN United Kingdom	Tel. No.: +44 (0)1823 337900 Fax No.: +44 (0)1823 284077 Emails: vargroup@ukho.gov.uk & christine.trickett@ukho.gov.uk Website: http://www.ukho.gov.uk

**Agents for the Maritime and Port Authority of Singapore
Nautical Charts and Publications**

Agent's name : **DPM (Singapore) Pte Ltd**
Address : 1 Maritime Square #09-72, HarbourFront Centre,
Singapore 099253
Telephone : (65) 6270 4060
Fax No. : (65) 6276 3858
E-mail : sales@dpmsingapore.com.sg
Internet Web Site : <http://www.dpmsingapore.com.sg>

Agent's name : **E.W. Liner Charts & Publications Pte Ltd**
Address : 102F, Pasir Panjang Road, #08-01, Citilink Warehouse Complex,
Singapore 118530
Telephone : (65) 6323 0773
Fax No. : (65) 6323 0775
E-mail : ewliner@singnet.com.sg
Internet Web Site : <http://www.ewliner.com>

Agent's name : **Motion Smith**
Address : 15 Jalan Kilang Barat
#08-01/05 Frontech Centre,
Singapore 159357
Telephone : (65) 6220 5098
: (After office hours: 8163 9993)
Fax No. : (65) 6225 4902
E-mail : sales@motsmith.com
Internet Web Site : <http://www.motsmith.com>

HYDROGRAPHIC NOTE - Instructions

1. Mariners are requested to notify the Chief Hydrographer, Maritime and Port Authority of Singapore, when new or suspected dangers to navigation are discovered, changes are observed in aids to navigation or where corrections to nautical publications may be necessary. Reports, which cannot be confirmed or are lacking in certain details should not be withheld.
2. Any ambiguities of time, positioning and depth should be stressed and any firm expectation of being able to check the information provided on a following voyage should be mentioned.
3. Mariners using satellite position fixing systems, eg. GPS, should provide details of equipment and datum used (where applicable). Where bearings (true or magnetic) are taken visually or by radar to fix a position, it should include more than two objects in order to provide a check on its accuracy. A position may also be defined by bearing and distance from a conspicuous object eg. beacon, lighthouse etc.
4. The note should include a tracing or a digital image of the chart used and the details should be clearly marked.
5. Echo sounders frequently register greater depths than the advertised maximum depth for the equipment, eg. a trace appearing at 50 metres may be in fact be 550 metres or even 1050 metres for equipment whose maximum depth is 500 metres. Erroneous depths caused by 2nd transmission error can usually be recognised by the following:
 - (a) the tracing being weaker than normal for the depth registered,
 - (b) the trace appearing to pass through the transmission line,
 - (c) the feathery nature of the trace.
6. An acknowledgement of receipt will be sent. When a Notice to Mariners is issued, the sender's vessel or name is quoted as the source unless the same information is also received in foreign Notices to Mariners.
7. Reports of shoals, uncharted dangers and defects in aids to navigation may also be made to the appropriate Singapore Port Operations Control Centre on VHF Channels 10, 12, 14, 68 or 73.

HYDROGRAPHIC NOTE

To:

Chief Hydrographer
Hydrographic Department
Maritime and Port Authority of Singapore
460 Alexandra Road PSA Building #20-00
Singapore 119963

Tel : (65) 6375 1227
Fax : (65) 6278 7646
Email : hydrographic@mpa.gov.sg

Sender's Contact Details :

Date :

Name of Vessel :

Address of Sender :

Tel : Fax :

Email :

Nature of Observation :

General Location :

Subject :

Position : Lat. Long.

Charts Used :

Date & Time of Observation :

Details :

.....

.....

Attachment :

Equipment Used :

Type of Position Fixing : GPS / DGPS Others :

Type of Echo Sounder :

Name and Signature :

Ship's/Company's stamp :