



SINGAPOREAN NOTICES TO MARINERS

SECTION	CONTENT	Page
I	Index of Charts & Publications	151
II	New Publications	153
	Notices to Mariners and Chart Corrections	156
	Temporary and Preliminary Notices	157
III	Navigational Information	158
	Amendments to Publications	160
IV	Reprint of Radio Navigational Warnings	161
V	Reprint of Admiralty Notices to Mariners for Dual Badged Charts	163

The monthly Notices to Mariners contain corrective information affecting charts published by the Hydrographic Department, Maritime and Port Authority of Singapore. The information contained in these Notices should be updated on the charts affected. Notices under Section II apply only to the particular Singaporean Chart(s) indicated.

Mariners are requested to notify the Chief Hydrographer, Maritime and Port Authority of Singapore, immediately on the discovery of new dangers or suspected dangers to navigation and of changes or defects in aids to navigation. See Hydrographic Note on back page.

The monthly Singaporean Notices to Mariners can be accessed directly from the MPA website:
[http://www.mpa.gov.sg/sites/port_and_shipping/circulars_and_notices/singapore_notices_to_mariners\(ntm\).page](http://www.mpa.gov.sg/sites/port_and_shipping/circulars_and_notices/singapore_notices_to_mariners(ntm).page)

This service is offered free of charge.

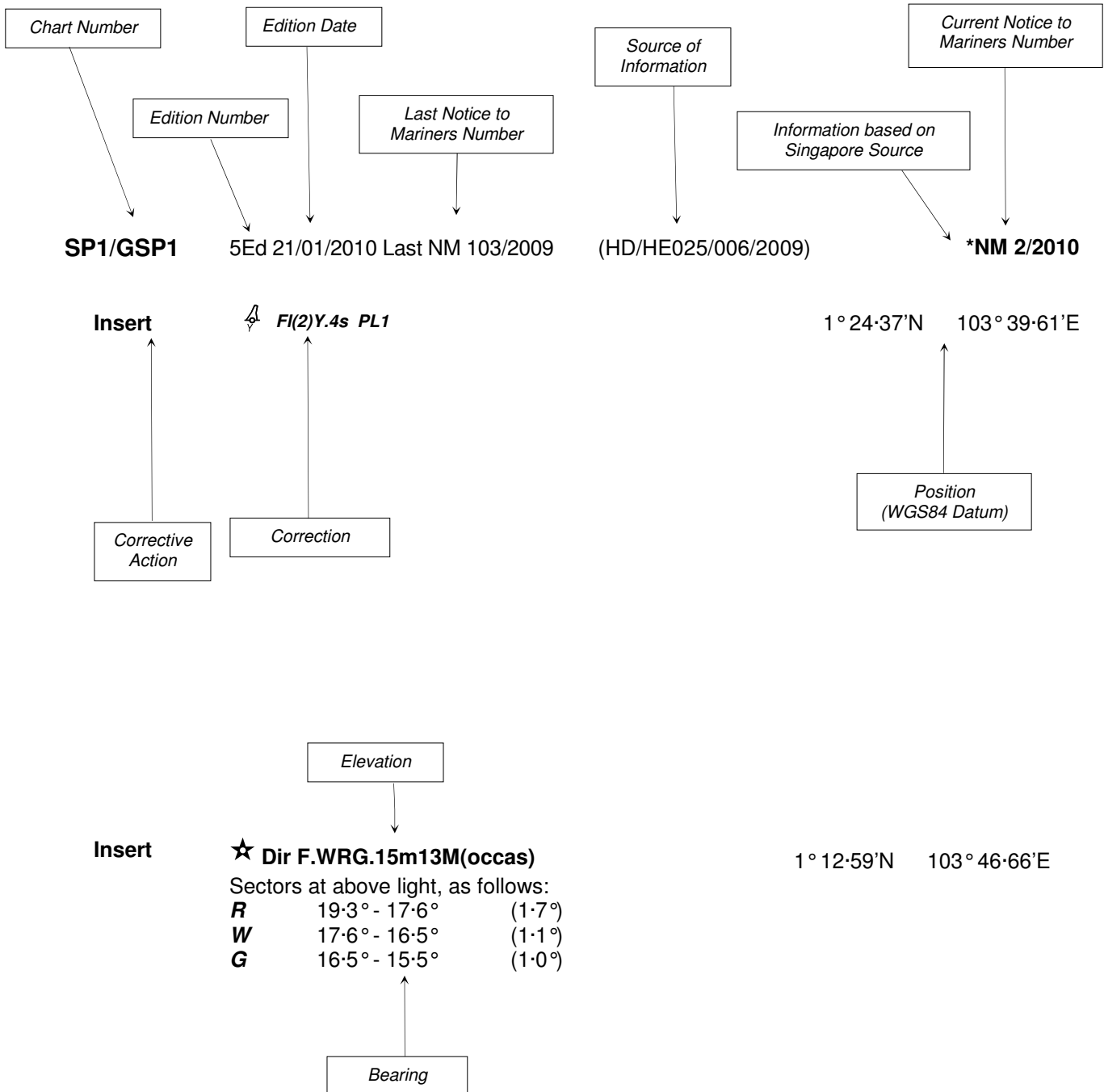
The Chief Hydrographer of
Maritime and Port Authority of Singapore
wishes all users of Singaporean and Dual Badged
Charts

A HAPPY SINGAPORE NATIONAL DAY

Hydrographic Department
Maritime and Port Authority of Singapore
460 Alexandra Road
PSA Building #20-00
Singapore 119963
Tel: (65) 6375 1227
Fax: (65) 6278 7646

EXPLANATION OF FORMAT

The elements of a typical chart correction are explained below.



Notes:

- a) Notice to Mariners number followed by:
T indicates a Temporary Notice (eg. ***NM 1T/2010**).
P indicates a Preliminary Notice (eg. ***NM 3P/2010**).
- b) Bearings are true reckoned clockwise from 000° to 359° ; those relating to lights are from seaward.
- c) Heights and elevations are above Mean High Water Springs.

I
INDEX OF CHARTS AND PUBLICATIONS

INDEX OF AFFECTED CHARTS

DESCRIPTION	NOTICE NO.	PAGE NO.
Index of Singaporean Charts	-	150
Index of Dual Badged Charts	-	151
Index of Singapore Electronic Navigational Chart (ENC)	-	152
New Publication "SINGAPORE TIDE TABLES YEAR 2011"	-	153
New Edition Dual Badged Charts	-	154
Singaporean Chart 201	67, 68	156
Singaporean Chart 202	69	156
Temporary and Preliminary Notices	-	157
Port Marine Notices	*70	158
Salvage Operation – Singapore Strait	*71	158
Singaporean Print-On-Demand (POD) Charts	*72	159
Amendments to Publications	*73	170
Reprint of Radio Navigational Warnings	-	161
Reprint of Admiralty Notices to Mariners for Dual Badged Charts	-	162, 163
Singapore Electronic Navigational Chart (ENC) Distributors	-	164, 165
Agents for the Maritime and Port Authority of Singapore Nautical Charts and Publications	-	165

*Denotes information are based on Singaporean source.

I
INDEX OF CHARTS AND PUBLICATIONS

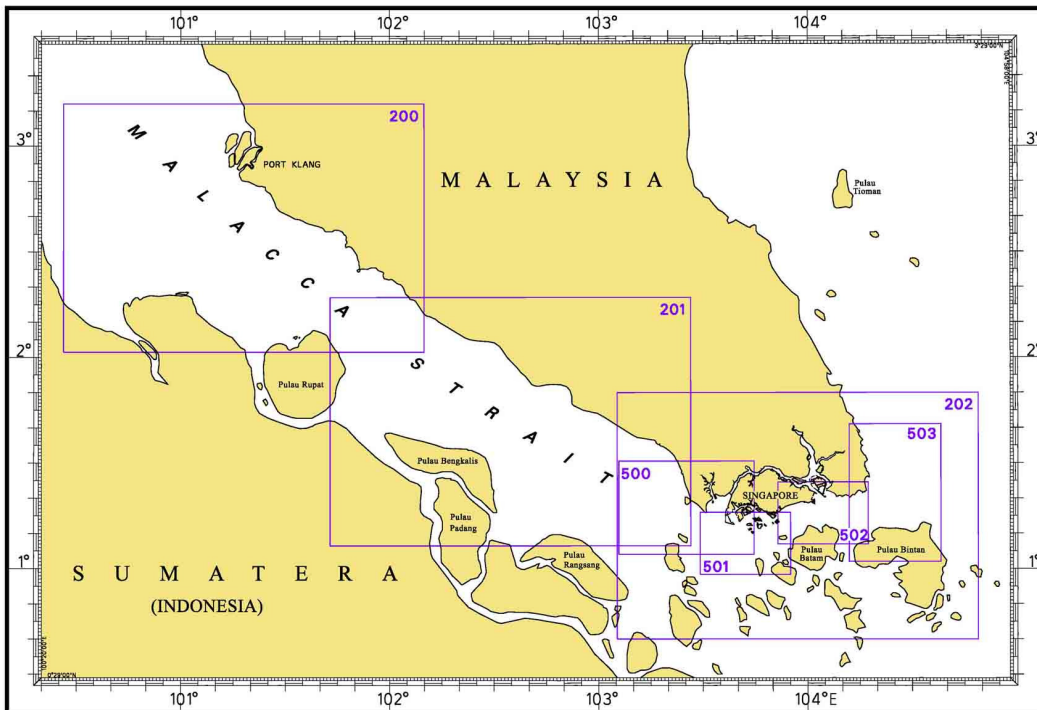
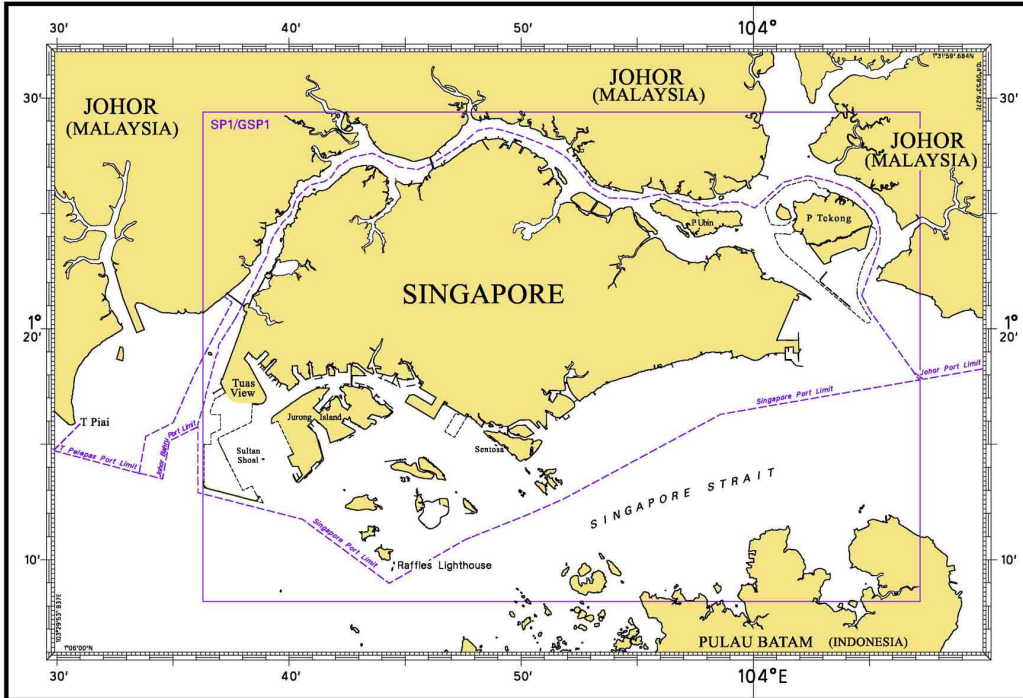
INDEX OF NOTICES

NOTICE NO.	DESCRIPTION	PAGE NO.
-	Index of Singaporean Charts	150
-	Index of Dual Badged Charts	151
-	Index of Singapore Electronic Navigational Chart (ENC)	152
-	New Publication "SINGAPORE TIDE TABLES YEAR 2011"	153
-	New Edition Dual Badged Charts	154, 155
67, 68	Singaporean Chart 201	156
69	Singaporean Chart 202	156
-	Temporary and Preliminary Notices	157
*70	Port Marine Notices	158
*71	Salvage Operation – Singapore Strait	158
*72	Singaporean Print-On-Demand (POD) Charts	159
*73	Amendments to Publications	160
-	Reprint of Radio Navigational Warnings	161
-	Reprint of Admiralty Notices to Mariners for Dual Badged Charts	162, 163
-	Singapore Electronic Navigational (ENC) Distributors	164, 165
-	Agents for the Maritime and Port Authority of Singapore Charts and Publications	165

* Denotes information are based on Singaporean source.

I INDEX OF CHARTS AND PUBLICATIONS

INDEX OF SINGAPOREAN CHARTS

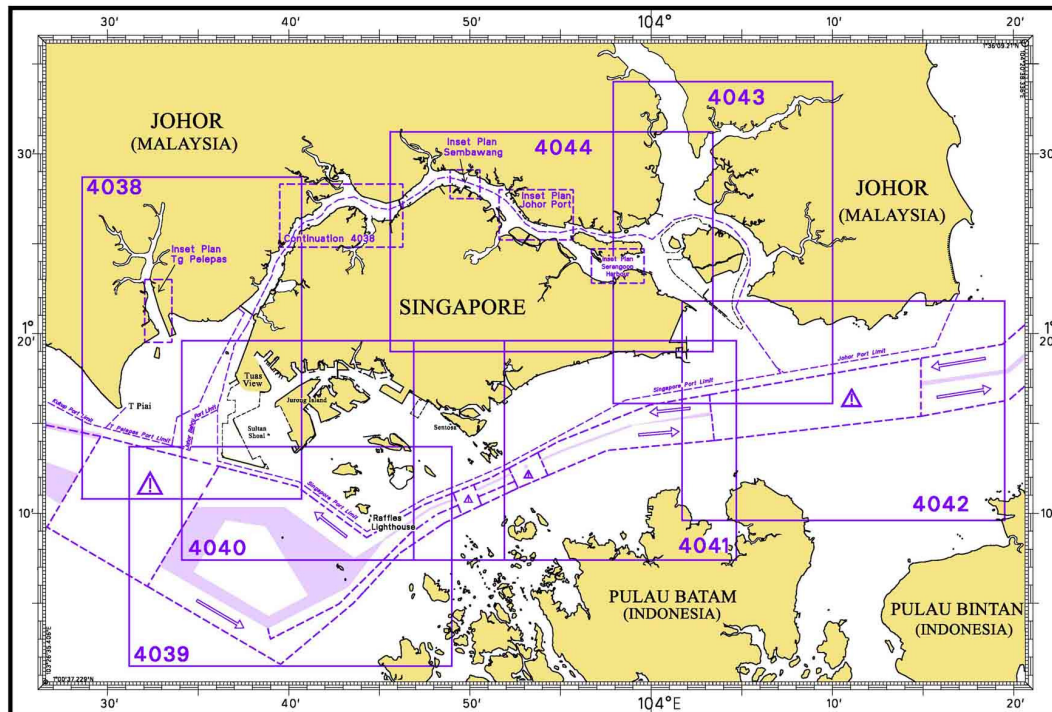
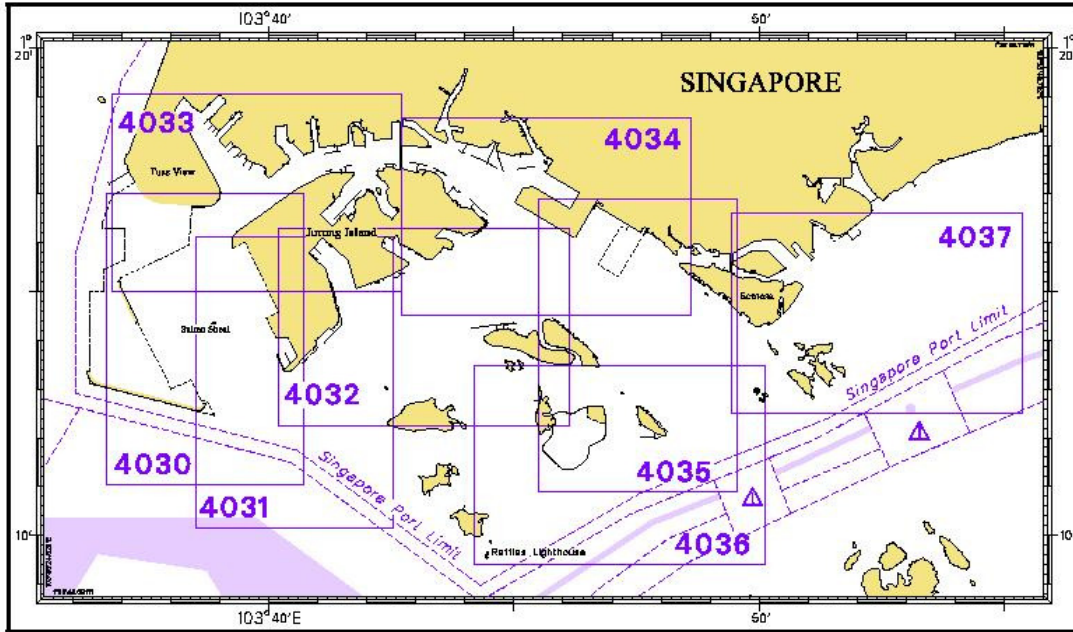


Notes:

Updated SINGAPOREAN Charts are available through our Print-On-Demand (POD) Chart Service. For more information, refer to Section III – Navigational Information and these charts can be purchased from our authorised Chart Agents:
DPM (Singapore) Pte Ltd, E.W. Limer Charts & Publications Pte Ltd and Motion Smith.

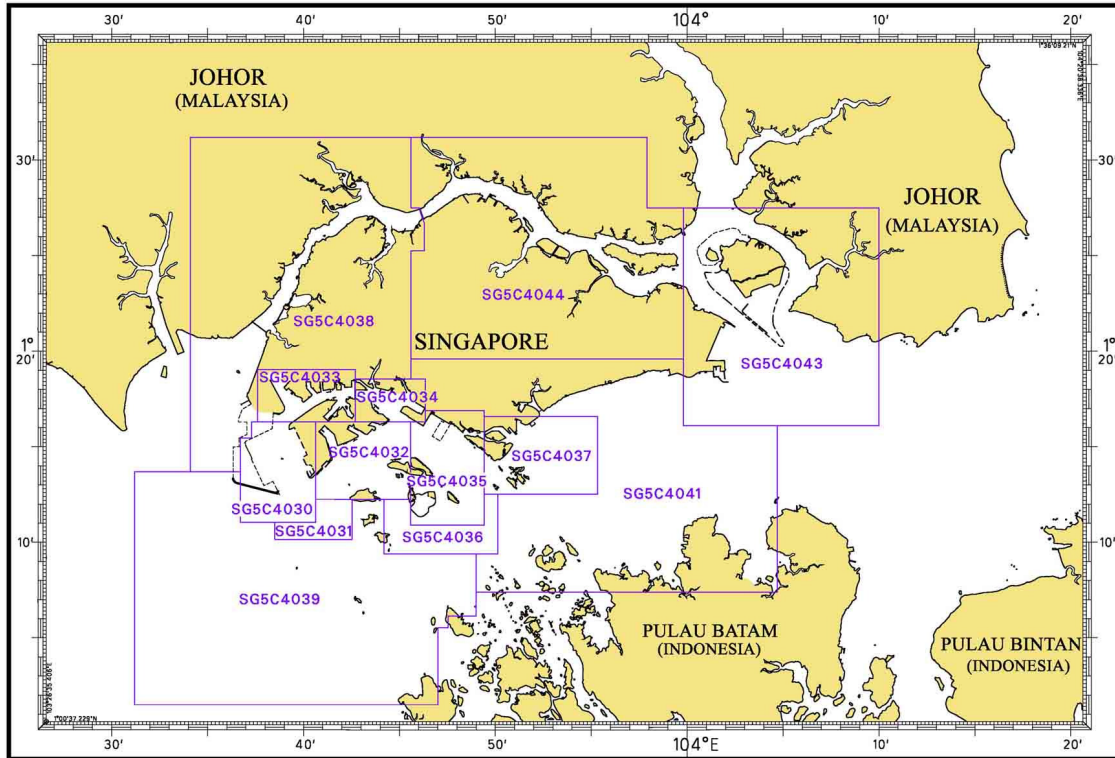
I INDEX OF CHARTS AND PUBLICATIONS

INDEX OF DUAL BADGED CHARTS



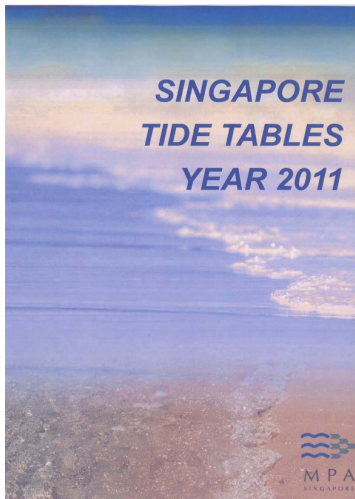
I
INDEX OF CHARTS AND PUBLICATIONS
INDEX OF SINGAPORE ELECTRONIC NAVIGATIONAL CHART (ENC)

INDEX OF SINGAPORE ENC



ENC Name	ENC Title	Latitude	Longitude
SG5C4030	West Jurong Anchorages and Temasek Fairway	1°11'050"N 1°16'300"N	103°36'700"E 103°40'640"E
SG5C4031	Western Approaches to Jurong Island	1°10'150"N 1°12'250"N	103°38'500"E 103°42'530"E
SG5C4032	Sinki Fairway	1°12'250"N 1°16'300"N	103°40'640"E 103°45'580"E
SG5C4033	Tuas Bay, West Jurong Channel and Pesek Basin	1°16'300"N 1°19'050"N	103°37'600"E 103°42'700"E
SG5C4034	East Jurong Channel, Pasir Panjang Terminal and West Keppel Fairway	1°16'300"N 1°18'550"N	103°42'700"E 103°46'356"E
SG5C4035	Western Anchorages, Jong Fairway and Cruise Bay	1°10'900"N 1°16'900"N	103°45'580"E 103°49'425"E
SG5C4036	Raffles Lighthouse to The Sisters	1°09'400"N 1°12'520"N	103°44'200"E 103°50'130"E
SG5C4037	Keppel Harbour, Tanjong Pagar Terminal and Approaches	1°12'520"N 1°16'590"N	103°49'425"E 103°55'340"E
SG5C4038	Johor Strait – Western Part	1°13'700"N 1°31'200"N	103°34'100"E 103°46'300"E
SG5C4039	Western Approaches to Main Strait	1°01'500"N 1°13'700"N	103°31'200"E 103°49'000"E
SG5C4041	Pulau Sebarok to Changi	1°07'400"N 1°19'600"N	103°45'600"E 104°04'700"E
SG5C4043	Kuala Johor and Sungai Johor	1°16'100"N 1°27'500"N	103°59'800"E 104°10'000"E
SG5C4044	Johor Strait – Eastern Part	1°19'600"N 1°31'200"N	103°45'600"E 103°59'800"E

II NEW PUBLICATIONS



SINGAPORE TIDE TABLES YEAR 2011

Summary of Publication

- (a) This 239-page book contains Tidal Height and Tidal Stream Predictions covering stations in Singapore Port waters and selected stations along the Malacca and Singapore Straits.

The predictions consist of 5 main segments to facilitate easy reference:

- High and Low Water Predictions
 - Hourly Tidal Height Predictions
 - Hourly Tidal Stream Predictions
 - Maximum and Slack Tidal Stream Predictions
 - Malacca Strait – High and Low Water Predictions
- (b) The presentation of the predictions is enhanced with colour codes so as to differentiate the various states of tidal heights, eg falling or rising tide and tidal stream directions. Moon phases, eg full and new moon, are also included in each calendar month to complement the prediction values.
- (c) The tidal heights are given in metres above Chart Datum (CD). The CD is the datum of soundings shown on the Singaporean Charts and Dual Badged Charts covering the area. A table showing the various tidal levels eg. Mean High Water Springs, Mean Low Water Springs etc, at various stations with reference to CD is also included in this publication.

To Whom Will It Be Useful?

Mariners, shipping community, port users and other interested users.

Frequency of Publication

Annually.

Cost of Publication

To be advised by Chart Agents.

Order Enquires:

This publication is available from the following Chart Agents:

- 1) DPM (Singapore) Pte Ltd
- 2) E.W. Liner Charts & Publications Pte Ltd
- 3) Motion Smith

(Please refer to Page 165 for details.)

II NEW PUBLICATIONS

NEW EDITION DUAL BADGED CHARTS PUBLISHED ON 29TH JULY 2010

Chart Number	:	4043
Title	:	Malaysia and Singapore Kuala Johor and Sungai Johor
Coverage	:	Lat 01°16.10' N 01°34.00' N Long 103°57.90' E 104°10.00' E
Scale	:	1: 30 000
Date Published	:	29 th July 2010
Size of Chart	:	748.1 X 1099.6 mm
Remarks	:	This new edition includes updated surveys covering these areas: <ul style="list-style-type: none"> • Area around Pulau Tekong • Kuala Johor • Area East of Changi • CAFHI Jetty

The existing chart of the same number published on 23rd July 2009 is superseded.

Chart Number	:	4044
Title	:	Singapore and Malaysia Johor Strait, Eastern Part
Coverage	:	Lat 01° 19.00' N 01° 31.20' N Long 103° 45.60' E 104° 03.40' E
Scale	:	1: 30 000
Date Published	:	29 th July 2010
Size of Chart	:	1100.5 x 749.5 mm
Remarks	:	This new edition includes updated surveys covering these areas : <ul style="list-style-type: none"> • Dockyard Reach • Kuala Johor • CAFHI Jetty • East of Changi

The existing chart of the same number published on 23rd July 2009 is superseded.

II NEW PUBLICATIONS

NEW EDITION DUAL BADGED CHARTS TO BE PUBLISHED ON 5TH AUGUST 2010

Chart Number	:	4038
Title	:	Singapore and Malaysia Johor Strait, Western Part
Coverage	:	Lat 01°10.80'N 01°28.70'N Long 103°28.60'E 103°40.70'E
Scale	:	1: 30 000
Date Published	:	5 th August 2010
Size of Chart	:	750.6 X 1100.2 mm
Remarks	:	This new edition includes updated surveys covering these areas : <ul style="list-style-type: none"> • Temasek Fairway • West Jurong Channel • Approaches to Sinki Fairway • Tuas Anchorages • Sudong Anchorage • West of Tuas View

The existing chart of the same number published on 17th August 2006 is superseded.

Chart Number	:	4040
Title	:	Singapore, Indonesia and Malaysia Tuas View to Pulau Sakijang Bendera (S. John's Island)
Coverage	:	Lat 01°07.40'N 01°19.60'N Long 103°34.10'E 103°51.90'E
Scale	:	1: 30 000
Date Published	:	5 th August 2010
Size of Chart	:	1100.6 X 749.5 mm
Remarks	:	This new edition includes updated surveys covering these areas : <ul style="list-style-type: none"> • Temasek Fairway • West Jurong Channel • East Jurong Channel • Approaches to Sinki Fairway • Sudong Anchorages • Shell SBM Area • Selat Pauh • Buran Channel

The existing chart of the same number published on 23rd July 2009 is superseded.

II
NOTICES TO MARINERS AND CHART CORRECTIONS

201	3Ed 5/10/07 Last NM 35/2010	(Admiralty Notice 30/3654/2010)	NM 67/2010
Substitute	⊕ for depth <i>14₉</i> enclosed by 20m approximate contour with seabed type, <i>R</i>	2°09·11'N	102°15·59'E
		(Admiralty Notice 28/3422/2010)	NM 68/2010
Delete	⊙ ₃₀ <i>Wk</i>	1°58·17'N	102°14·14'E
<hr/>			
202	6Ed 24/09/09 Last NM 58/2010	(Admiralty Notice 30/3655/2010)	NM 69/2010
Insert	★ Fl.5s16m10M	0°48·40'N	103°08·20'E
<hr/>			

II
TEMPORARY AND PRELIMINARY NOTICES

Nil

III NAVIGATIONAL INFORMATION

*(NM 70/2010) PORT MARINE NOTICES

The following PMNs have been shortlisted, as they would be of particular interest to mariners.

These notices can be accessed directly from MPA website:

http://www.mpa.gov.sg/sites/port_and_shipping/circulars_and_notices/port_marine_notices.page

PMN No.	Subject
79/2010	Construction of Container Berth and Stacking Yard on Jurong Island.
80/2010	Dredging works at East Keppel Fairway.
81/2010	Construction of jetties at Banyan Basin.
82/2010	Marine Construction works off Marina Barrage.

*(NM 71/2010) SALVAGE OPERATION – SINGAPORE STRAIT

Remark : Salvage operation for the removal of wreck "Hyundai 105"

Date : With effect from 2nd July to 10th November 2010.

Duration: 24 hours a day, seven days a week with effect from 2nd July 2010.

- Salvage operation for the wreck removal at 1°13.4'N 103°57.75'E will be carried out by the salvors. Diving operations and heavy equipments will be expected in the vicinity of the wreck.
- The operations will be carried out in close proximity to the Traffic Separation Scheme and the work area is centred at 500 metres radius around the wreck.
- The cardinal danger mark buoys will remain functional and in position at all times.

Vessels: Vessels involved in the salvage operations will display the appropriate day and night signals and will stand by on VHF Ch 14 and 12 and shall follow any traffic information given by Vessel Traffic Information Service (VTIS).

Navigational Broadcast: Navigational warning broadcast will be promulgated by VTIS on VHF Ch 09 and NAVTEX to inform vessels of the salvage operation. Mariners are to maintain a listening watch for the above safety information.

Caution: Mariners are advised to navigate with caution and give a wide berth when passing the work area.

Salvors Details: Mr Ken Lim
SMIT SINGAPORE PTE LTD
23 Gul Road Singapore 629356
Email: k.lim@smit.com
Tel: +65 6668 4293

Source : SMIT Singapore Pte Ltd
HD/DB67/008/2010

Charts affected : SP1/GSP1, 202, 502 and 4041.

III NAVIGATIONAL INFORMATION

*(NM 72/2010)

SINGAPOREAN PRINT-ON-DEMAND (POD) CHARTS

Print-On-Demand (POD) Charts are the most up-to-date paper nautical charts printed for navigational use. These nautical charts are produced in accordance with the International Hydrographic Organisation (IHO) charting specifications. These official nautical charts are continually updated to the latest Notices to Mariners before they are printed and sold to users.

These POD Charts include SP1/GSP1, 200, 201, 202, 500, 501, 502 and 503.

BENEFITS TO OUR CUSTOMERS

Convenience

Customers need not make numerous hand corrections to the nautical charts before use. In addition the updated POD Charts are more accurate and reliable than offset printed charts with hand corrections.

Clarity

Clarity in the presentation of updated information as compared to lithographic printed charts, where in some cases there are several overlapping corrections over existing information.

Coverage

The POD Charts cover the Malacca and Singapore Straits, from One Fathom Bank to Horsburgh Lighthouse.

III
AMENDMENTS TO PUBLICATIONS

***(NM 73/2010) UPDATING OF PUBLICATION "SINGAPORE PORT INFORMATION 2010/2011"**

1. Page 96 – Item 47.1

WHARVES AND BERTHS

TUAS POWER STATION Feedstock Jetty (1°16.7'N, 103°38.8'E)

Insert the following :

Berth	Length of Berth	Width of Berth	Depth Alongside (Year Surveyed)
Tuas Power Station Feedstock Jetty	165m	23.7m	10.3m (2010)

Source: HD/HY Code G00108710

IV
REPRINT OF RADIO NAVIGATIONAL WARNINGS

TT173

VESSELS IN EAST JOHOR STRAIT ARE ADVISED TO NAVIGATE WITH CAUTION WHEN NEAR THE PROJECT AREAS OFF PULAU TEKONG, CHANGI AND MALANG PAPAN AS SHALLOW WATER AREAS EXIST. VESSELS ARE ADVISED TO KEEP LOOKOUT FOR TUGS AND BARGES NAVIGATING NEAR THE PROJECT AREAS AND PASSENGER FERRIES CROSSING BETWEEN CHANGI AND PULAU TEKONG AND VICINITY OF PASIR GUDANG.

TT619 (AMENDED ON 270430z)

DREDGER QUEEN OF PENTA OCEAN IS CONDUCTING DREDGING OPERATIONS IN POSITIONS BOUNDED BY COORDINATES:

01°15.827' N 103°57.737' E

01°14.865' N 103°58.134' E

01°13.298' N 103°54.401' E

01°13.884' N 103°54.131' E

VESSELS ARE ADVISED TO PROCEED AT SAFE SPEED AND TO GIVE A WIDE BERTH.

TT753

A SMALL WOODEN CARGO BOAT 10M IN LENGTH SUNK AT 01°15.73'N 103°32.1'E.

TT883

CABLE SHIP 'ASEAN RESTORER' IS CARRYING OUT CABLE REPAIRS OPERATIONS AT THE FOLLOWING CO-ORDINATES:

A) 01°26.30'N 104°27.50'E

B) 01°26.40'N 104°27.60'E

C) 01°26.45'N 104°27.70'E

D) 01°22.00'N 104°27.60'E

VESSELS ARE ADVISED TO KEEP A LOOKOUT AND GIVE A WIDE BERTH.

TT884

SALVAGE OPS UNDERWAY IN 01°13.4'N 103°57.75'E. ALL SHIPS ARE REQUESTED TO GIVE A WIDE BERTH OF AT LEAST 5 CABLES WHEN PASSING THE AREA.

TT885

THE DIFFERENTIAL GLOBAL NAVIGATION SATELLITE SYSTEM REFERENCE SERVICE AT RAFFLES LIGHTHOUSE HAS BEEN UPGRADED AND OPERATIONAL.

TT886

SAFE WATER MARK LFL.10S(RW) MARKED THE ENTRANCE INTO DWR IS MISSING.

SR154

THERE WAS A REPORT OF AN UNIDENTIFIED VESSEL SUNK SOUTHWEST OF HORSBURGH AT POSITION 01°16.12'N 104°21.5'E. VESSELS IN THE VICINITY ARE ADVISED TO KEEP A LOOKOUT AND REPORT SIGHTING TO SPOCC.

ISSUED BY SINGAPORE PORT OPERATIONS CONTROL CENTRE
(as at 18th July 2010)

V
**REPRINT OF ADMIRALTY NOTICES TO MARINERS
 FOR DUAL BADGED CHARTS**

These notices can be accessed directly from UKHO Website:

<http://www.ukho.gov.uk/ProductsandServices/MaritimeSafety/Pages/NMPublic.aspx>

**3314* SINGAPORE – Singapore Strait – Kuala Johor – Pulau Bukom Eastwards and Marina East Eastwards -
 Depths. Obstructions. Light-beacon. Buoy. Submarine cable.**

Source: Maritime and Port Authority of Singapore

Chart 4035 [*previous update 3041/10*] WGS84 DATUM




Insert	 Q(6)+LFL.15s4m5M Second Bukom	(a)	1° 14'·161N., 103° 46'·455E.
Substitute	depth 6₇ for  <i>Obstn</i>		1° 14'·176N., 103° 46'·446E.
Delete	depth 8₉ , adjacent to:		(a) above
	 Q(6)+LFL.15s , close E of:		(a) above

Chart 4039 [*previous update 1107/10*] WGS84 DATUM


Insert	Submarine cable,  , joining;	(a)	1° 07'· 40N., 103° 45'·82E. (existing cable) 1° 06'· 97N., 103° 45'·46E. 1° 06'· 41N., 103° 45'·42E. 1° 01'· 75N., 103° 40'·11E. 1° 01'· 57N., 103° 39'·56E. 1° 01'· 74N., 103° 38'·74E. 1° 04'· 66N., 103° 34'·07E. 1° 05'· 64N., 103° 32'·11E. 1° 06'· 46N., 103° 31'·20E. (W border)
--------	---	-----	---

Chart 4040 [*previous update 3041/10*] WGS84 DATUM




Substitute	depth 6₇ for  <i>Obstn</i> and extend 10m contour SE to enclose		1° 14'· 17N., 103° 46'·45E.
	 Q(6)+LFL.15s4m5M Second Bukom for  Q(6)+LFL.15s		1° 14'· 16N., 103° 46'·47E.

Chart 4041 [*previous update 3041/10*] WGS84 DATUM

Insert	 Obstn		1° 17'· 50N., 103° 53'·71E.
Substitute	 Obstn for  <i>Obstn</i>		1° 17'· 25N., 103° 53'·59E.

Chart 4042 [*previous update 1590/10*] WGS84 DATUM

Insert	depth 14₃ enclosed by 15m contour		1° 20'· 24N., 104° 05'·26E.
--------	---	--	-----------------------------

Chart 4043 [*previous update 1590/10*] WGS84 DATUM

Insert	depth 14₃ enclosed by 15m contour		1° 20'· 24N., 104° 05'·26E.
--------	---	--	-----------------------------

V
**REPRINT OF ADMIRALTY NOTICES TO MARINERS
FOR DUAL BADGED CHARTS**

**3315* MALAYSIA – Peninsular Malaysia, West Coast – Johor – Johor Strait – P. Merambong – Light.
Light-beacon.**

Light List Vol. F,2009/10, 1680

Source: Marine Department, Peninsular Malaysia Notice 33/10

Chart 4038 [*previous update 2726/10*] WGS84 DATUM

Amend light-beacon to, **Fl.5s23m10M**

1° 18'· 90N., 103° 36'·65E.

Chart 4040 [*previous update 3314/10*] WGS84 DATUM

Amend light-beacon to, **Fl.5s23m10M**

1° 18'· 90N., 103° 36'·65E.

Updated to Admiralty Notices to Mariners Edition No. 30 of 2010 dated 29th July 2010.

SINGAPORE ELECTRONIC NAVIGATIONAL CHART (ENC) DISTRIBUTORS

Please approach any of the appointed distributors to purchase the Singapore ENC.

DISTRIBUTOR	ADDRESS	TELEPHONE/FAX NO./EMAIL/WEBSITE
DPM (Singapore) Pte Ltd	1 Maritime Square, #09-72 HarbourFront Centre, Singapore 099253	Tel. No.: +65 6270 4060 Fax No.: +65 6276 3858 Email: sales@dpmsingapore.com.sg Website: http://www.dpmsingapore.com.sg
Kelvin Hughes(S) Pte Ltd	8 Pandan Avenue #02-00, Singapore 609384	Tel. No.: +65 6545 9880 ext.24 Fax No.: +65 6545 8892 Email: hamzah.akhbar@khsing.com Website: http://www.kelvinhughes.co.uk
Maritime Information Systems (MARIS)	52, Telok Blangah Road #01-06, Telok Blangah Centre, Singapore 058809	Tel. No.: +65 6276 1472 Fax No.: +65 6276 1473 Email: support@maris.sg Website: http://www.maris.no
Maritime Information System AS (MARIS)	Danholmen 25, 3128 Notteroy, Norway	Tel. No.: +47 33 30 42 50 Fax No.: +47 33 30 42 51 Email: roar.moe@maris.no Website: http://www.maris.no
Motion Smith	15 Jalan Kilang Barat #08-01/05 Frontech Centre Singapore 159357	Tel. No.: +65 6220 5098 Fax No.: +65 6225 4902 Email: sales@motsmith.com Website: http://www.motsmith.com
Transas Marine Pacific Pte Ltd	Cyber Centre 16 & 18 Jalan Kilang Barat Singapore 159358	Tel. No.: +65 6271 0200 Fax No.: +65 6271 7300 Email: dominic@transas.com.sg Website: http://www.transas.com.sg
Vector Services Pte Ltd	15 West Coast Highway, #02-14A Pasir Panjang Building Singapore 117861	Tel. No.: +65 6777 3602 Fax No.: +65 6777 9203 Email: kwchoy@pacific.net.sg
Marine Press of Canada	640 Rue St-Paul Ouest, Suite 300 Montreal (QC) Canada, H3C1L9	Tel. No.: (514) 866 8342 Fax No.: (514) 866 9050 Email : sales@marinepress.com Website: http://www.marinepress.com
HanseNautic GmbH Bade & Hornig, Eckardt & Messtorff	Herrengaben 31 D-20459 Hamburg, Germany	Tel. No.: +49 40 374 811-32 Fax No.: +49 40 366 400 Email: wilde@hansenautic.de Website : http://www.HanseNautic.com
ChartWorld GmbH	Ruhrstrasse 90, D-22761 Hamburg, Germany	Tel. No.: +49 40 853 58 6940 Fax No.: +49 40 853 58 6949 Email: sales@chartworld.com Website : http://www.sevencs.com
Japan Hydrographic Association Electronic Charts Division	Daiichi Sogo Bldg, 6F 1-6-6, Hanedakuko, Ota-ku, Tokyo 144-0041, Japan	Tel. No.: +81 3 5708 7093 Fax No.: +81 3 5708 7094 Email: enc-support@jha.jp Website: http://www.jha.jp

SINGAPORE ELECTRONIC NAVIGATIONAL CHART (ENC) DISTRIBUTORS

Please approach any of the appointed distributors to purchase the Singapore ENC.

DISTRIBUTOR	ADDRESS	TELEPHONE/FAX NO./EMAIL/WEBSITE
E_MLX Co. Ltd	Ssangyong Research No.2 Lab Sinseong-Dong 100 Yusong-Gu, Daejoen 305-804, Korea (ROK)	Tel. No.: +82 42 865 1893 Fax No.: +82 42 865 1884 Email: Jester-kim@emlx.co.kr
Korean Ocean Development Co. Ltd	2ND Fl, Dongbang Bldg, 25-4, 4 Ga Jungang-Dong, Jung-Gu, Busan, South Korea	Tel. No.: +82 514 66 0760 Fax No.: +82 514 65 9345 Email: sales@chartkorea.com Website: http://www.chartkorea.com
Jeppesen Norway A/S	P.O Box 212 , N-4379 Egersund, Norway	Tel No.: +47 514 64 700 Fax No: +47 514 64 701 Email: enc@c-map.no Website : http://www.c-map.no
PRIMAR STAVANGER	Lervigsveien 36, P.O Box 60, N-4001 Stavanger, Norway	Tel. No.: +47 51 93 9500 Fax No.: +47 51 93 9501 Email: sales@primar.org Website : http://www.primar-stavanger.org
United Kingdom Hydrographic Office	Admiralty Way, Taunton, Somerset TA1 2DN United Kingdom	Tel. No.: +44 (0)1823 337900 Fax No.: +44 (0)1823 284077 Emails: vargroup@ukho.gov.uk & christine.trickett@ukho.gov.uk Website: http://www.ukho.gov.uk

**Agents for the Maritime and Port Authority of Singapore
Nautical Charts and Publications**

Agent's Name : **DPM (Singapore) Pte Ltd**
Address : 1 Maritime Square #09-72, HarbourFront Centre,
Singapore 099253
Telephone : (65) 6270 4060
Fax No. : (65) 6276 3858
E-mail : sales@dpmsingapore.com.sg
Internet Web Site : <http://www.dpmsingapore.com.sg>

Agent's Name : **E.W. Liner Charts & Publications Pte Ltd**
Address : 102F, Pasir Panjang Road, #08-01, Citilink Warehouse Complex,
Singapore 118530
Telephone : (65) 6323 0773
Fax No. : (65) 6323 0775
E-mail : ewliner@singnet.com.sg
Internet Web Site : <http://www.ewliner.com>

Agent's Name : **Motion Smith**
Address : 15 Jalan Kilang Barat
#08-01/05 Frontech Centre,
Singapore 159357
Telephone : (65) 6220 5098
: (After office hours: 8163 9993)
Fax No. : (65) 6225 4902
E-mail : sales@motsmith.com
Internet Web Site : <http://www.motsmith.com>

HYDROGRAPHIC NOTE - Instructions

1. Mariners are requested to notify the Chief Hydrographer, Maritime and Port Authority of Singapore, when new or suspected dangers to navigation are discovered, changes are observed in aids to navigation or where corrections to nautical publications may be necessary. Reports, which cannot be confirmed or are lacking in certain details should not be withheld.
2. Any ambiguities of time, positioning and depth should be stressed and any firm expectation of being able to check the information provided on a following voyage should be mentioned.
3. Mariners using satellite position fixing systems, eg. GPS, should provide details of equipment and datum used (where applicable). Where bearings (true or magnetic) are taken visually or by radar to fix a position, it should include more than two objects in order to provide a check on its accuracy. A position may also be defined by bearing and distance from a conspicuous object eg. beacon, lighthouse etc.
4. The note should include a tracing or a digital image of the chart used and the details should be clearly marked.
5. Echo sounders frequently register greater depths than the advertised maximum depth for the equipment, eg. a trace appearing at 50 metres may be in fact be 550 metres or even 1050 metres for equipment whose maximum depth is 500 metres. Erroneous depths caused by 2nd transmission error can usually be recognised by the following:
 - (a) the tracing being weaker than normal for the depth registered,
 - (b) the trace appearing to pass through the transmission line,
 - (c) the feathery nature of the trace.
6. Upon receipt of a hydrographic note, a Notice to Mariners may be issued. The sender's vessel or name is quoted as the source unless the same information is also received in foreign Notices to Mariners.
7. Reports of shoals, uncharted dangers and defects in aids to navigation may also be made to the appropriate Singapore Port Operations Control Centre on VHF Channels 10, 12, 14, 68 or 73.

HYDROGRAPHIC NOTE

To:

Chief Hydrographer
Hydrographic Department
Maritime and Port Authority of Singapore
460 Alexandra Road PSA Building #20-00
Singapore 119963

Tel : (65) 6375 1227
Fax : (65) 6278 7646
Email : hydrographic@mpa.gov.sg

Sender's Contact Details :

Date :

Name of Vessel :

Address of Sender :

Tel : Fax :

Email :

Nature of Observation :

General Location :

Subject :

Position : Lat. Long.

Charts Used :

Date & Time of Observation :

Details :

.....

.....

Attachment :

Equipment Used :

Type of Position Fixing : GPS / DGPS Others :

Type of Echo Sounder :

Name and Signature :

Ship's/Company's Stamp :