



SINGAPOREAN NOTICES TO MARINERS

SECTION	CONTENT	Page
I	Index of Charts & Publications	136
II	New Publications	139
	Notices to Mariners and Chart Corrections	142
	Temporary and Preliminary Notices	144
III	Navigational Information	145
	Amendments to Publications	146
IV	Reprint of Radio Navigational Warnings	147
V	Reprint of Admiralty Notices to Mariners for Dual Badged Charts	149

The monthly Notices to Mariners contain corrective information affecting charts published by the Hydrographic Department, Maritime and Port Authority of Singapore. The information contained in these Notices should be updated on the charts affected. Notices under Section II apply only to the particular Singaporean Chart(s) indicated.

Mariners are requested to notify the Chief Hydrographer, Maritime and Port Authority of Singapore, immediately on the discovery of new dangers or suspected dangers to navigation and of changes or defects in aids to navigation. See Hydrographic Note on back page.

The monthly Singaporean Notices to Mariners can be accessed directly from the MPA website:
[http://www.mpa.gov.sg/sites/port_and_shipping/circulars_and_notices/singapore_notices_to_mariners\(ntm\).page](http://www.mpa.gov.sg/sites/port_and_shipping/circulars_and_notices/singapore_notices_to_mariners(ntm).page)

This service is offered free of charge.

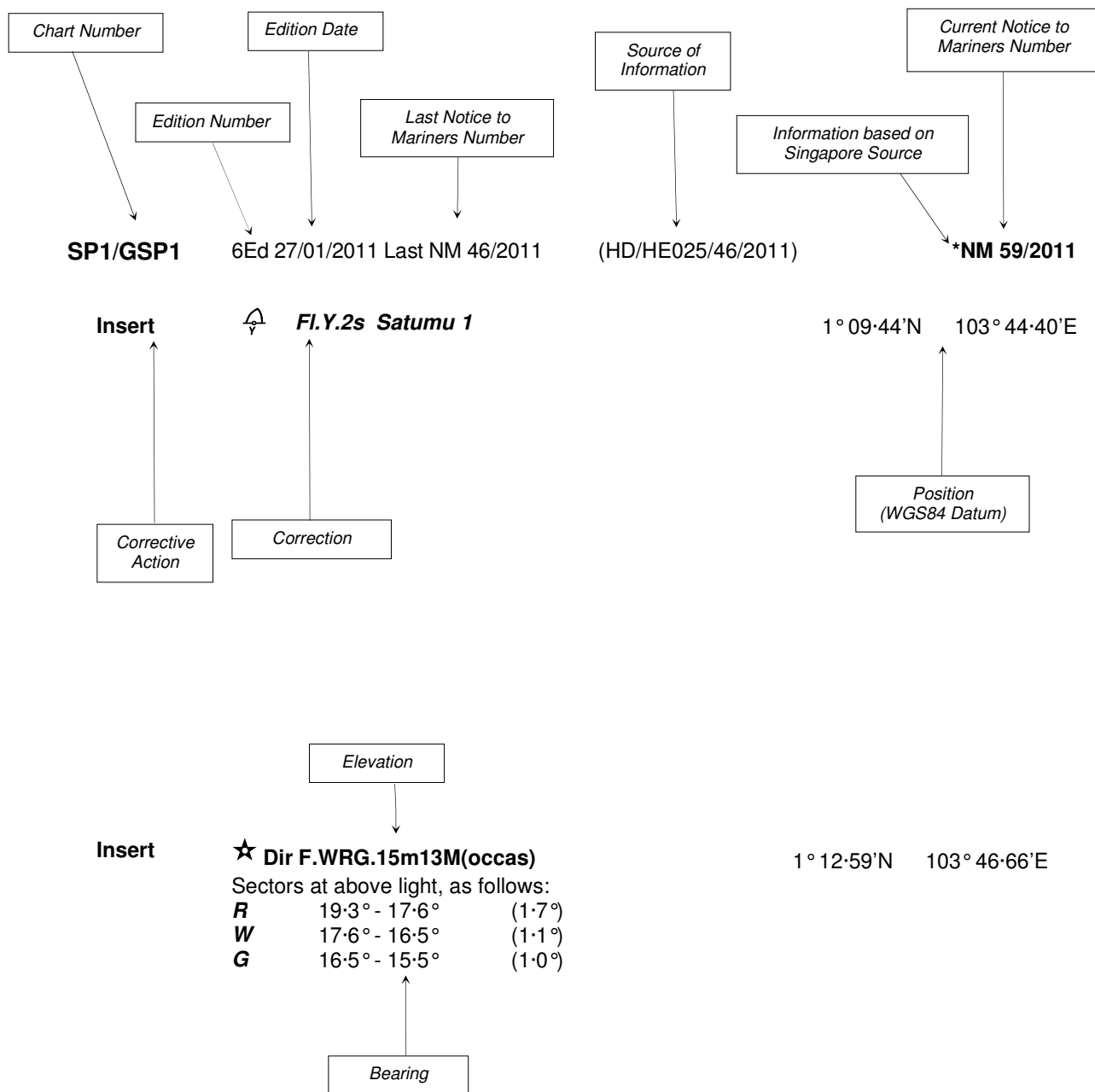
The Chief Hydrographer of
 Maritime and Port Authority of Singapore
 wishes all users of Singaporean and Dual Badged Charts

**A HAPPY SINGAPORE NATIONAL DAY
 and
 SELAMAT HARI RAYA AIDILFITRI**

Hydrographic Department
 Maritime and Port Authority of Singapore
 460 Alexandra Road
 PSA Building #20-00
 Singapore 119963
 Tel: (65) 6375 1227
 Fax: (65) 6278 7646

EXPLANATION OF FORMAT

The elements of a typical chart correction are explained below.



Notes:

- a) Notice to Mariners number followed by:
T indicates a Temporary Notice (eg. ***NM 60T/2011**).
P indicates a Preliminary Notice (eg. ***NM 61P/2011**).
- b) Bearings are true reckoned clockwise from 000° to 359°; those relating to lights are from seaward.
- c) Heights and elevations are above Mean High Water Springs.

I
INDEX OF CHARTS AND PUBLICATIONS

INDEX OF AFFECTED CHARTS

DESCRIPTION	NOTICE NO.	PAGE NO.
Index of Singaporean Charts	-	136
Index of Dual Badged Charts	-	137
Index of Singapore Electronic Navigational Chart (ENC)	-	138
New Edition Dual Badged Charts	-	139 to 141
New Edition of Singaporean Chart 1	-	140
Singaporean Chart SP1/GSP1	*66, *67, *68	142
Temporary and Preliminary Notices	-	144
Port Marine Notices	*69	145
Singaporean Print-On-Demand (POD) Charts	*70	145
Amendments to Publications	*71	146
Reprint of Radio Navigational Warnings	-	147, 148
Reprint of Admiralty Notices to Mariners for Dual Badged Charts	-	149, 150
Singapore Electronic Navigational Chart (ENC) Distributors	-	151
Chart Agents for the Maritime and Port Authority of Singapore Nautical Charts and Publications	-	151

*Denotes information are based on Singaporean source.

I
INDEX OF CHARTS AND PUBLICATIONS

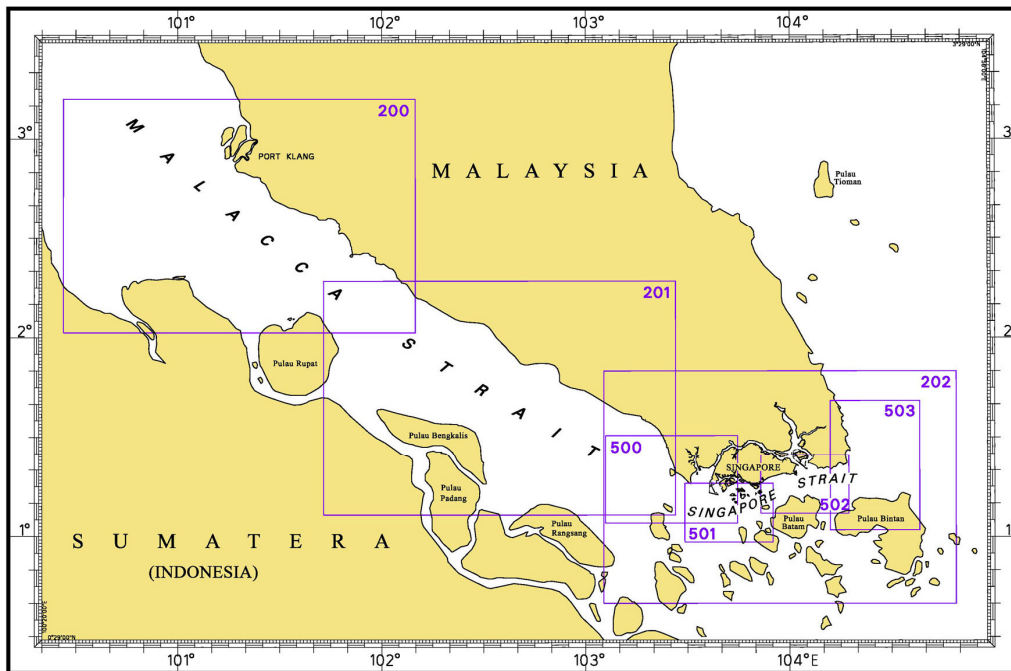
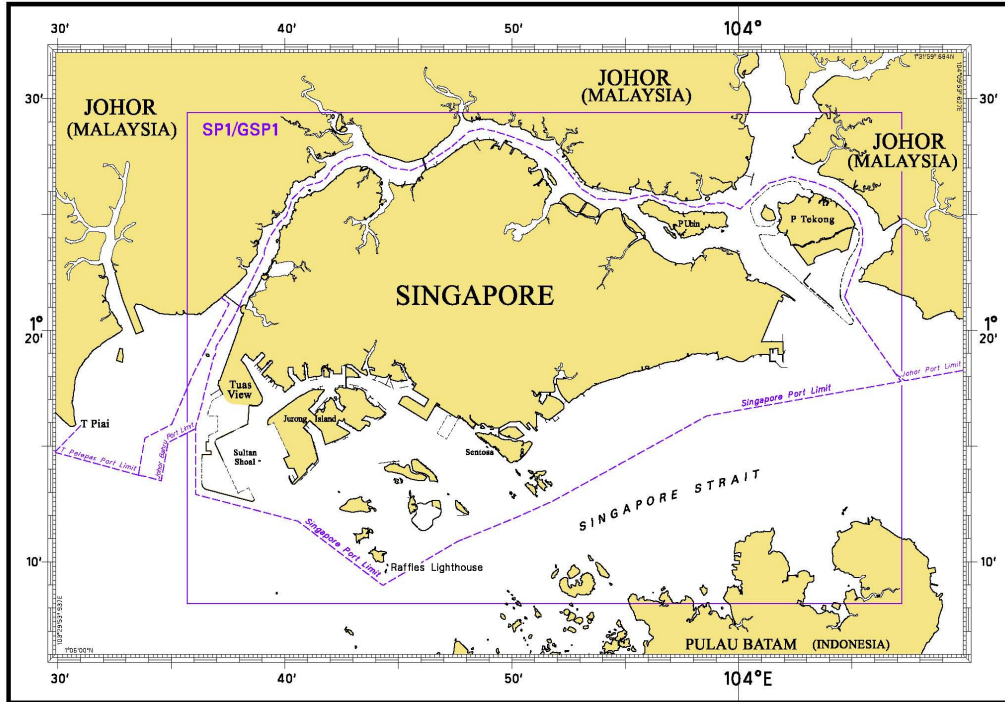
INDEX OF NOTICES

NOTICE NO.	DESCRIPTION	PAGE NO.
-	Index of Singaporean Charts	136
-	Index of Dual Badged Charts	137
-	Index of Singapore Electronic Navigational Chart (ENC)	138
-	New Edition Dual Badged Charts	139 to 141
-	New Edition of Singaporean Chart 1	140
*66, *67, *68	Singaporean Chart SP1/GSP1	142
-	Temporary and Preliminary Notices	144
*69	Port Marine Notices	145
*70	Singaporean Print-On-Demand (POD) Charts	145
*71	Amendments to Publications	146
-	Reprint of Radio Navigational Warnings	147, 148
-	Reprint of Admiralty Notices to Mariners for Dual Badged Charts	149, 150
-	Singapore Electronic Navigational Chart (ENC) Distributors	151
-	Chart Agents for the Maritime and Port Authority of Singapore Nautical Charts and Publications	151

* Denotes information are based on Singaporean source.

I INDEX OF CHARTS AND PUBLICATIONS

INDEX OF SINGAPOREAN CHARTS



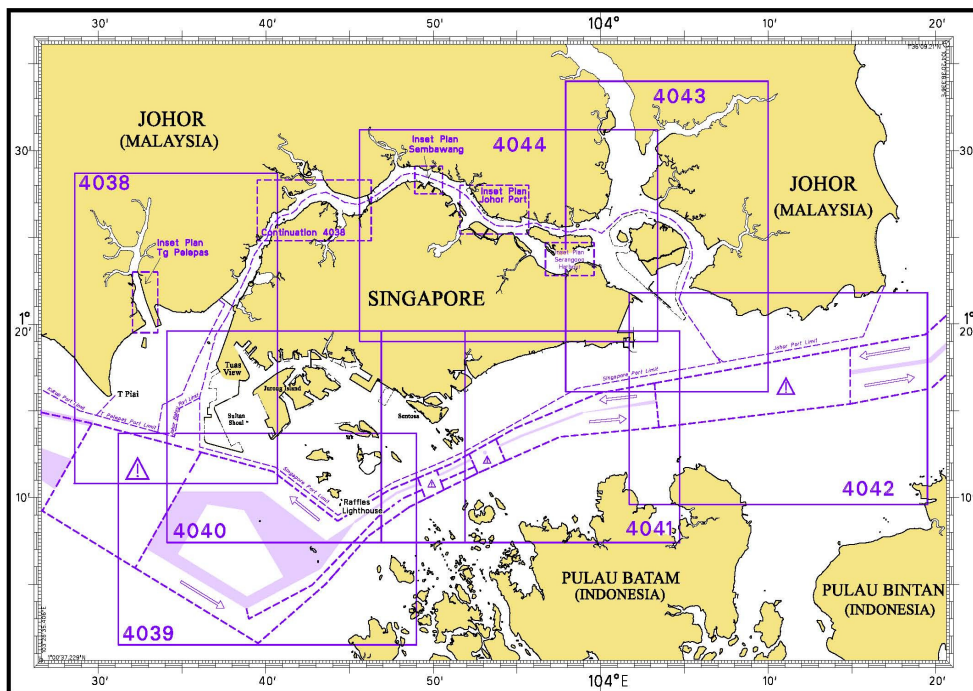
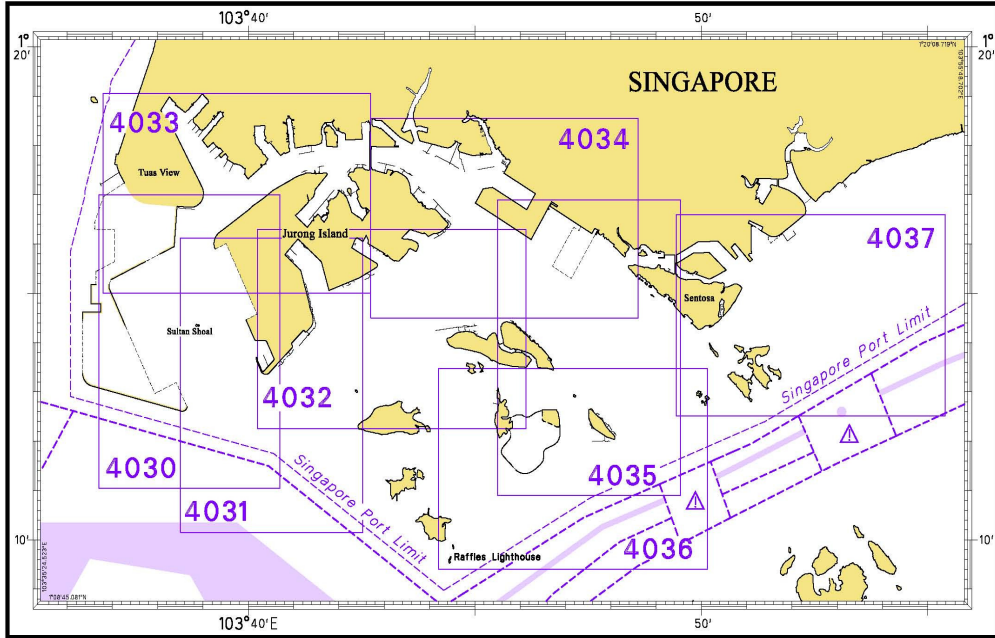
Notes:

Updated SINGAPOREAN Charts are available through our Print-On-Demand (POD) Chart Service. For more information, refer to Section III – Navigational Information and these charts can be purchased from our authorised Chart Agents:

DPM (Singapore) Pte Ltd, E.W. Liner Charts & Publications Pte Ltd and Motion Smith.

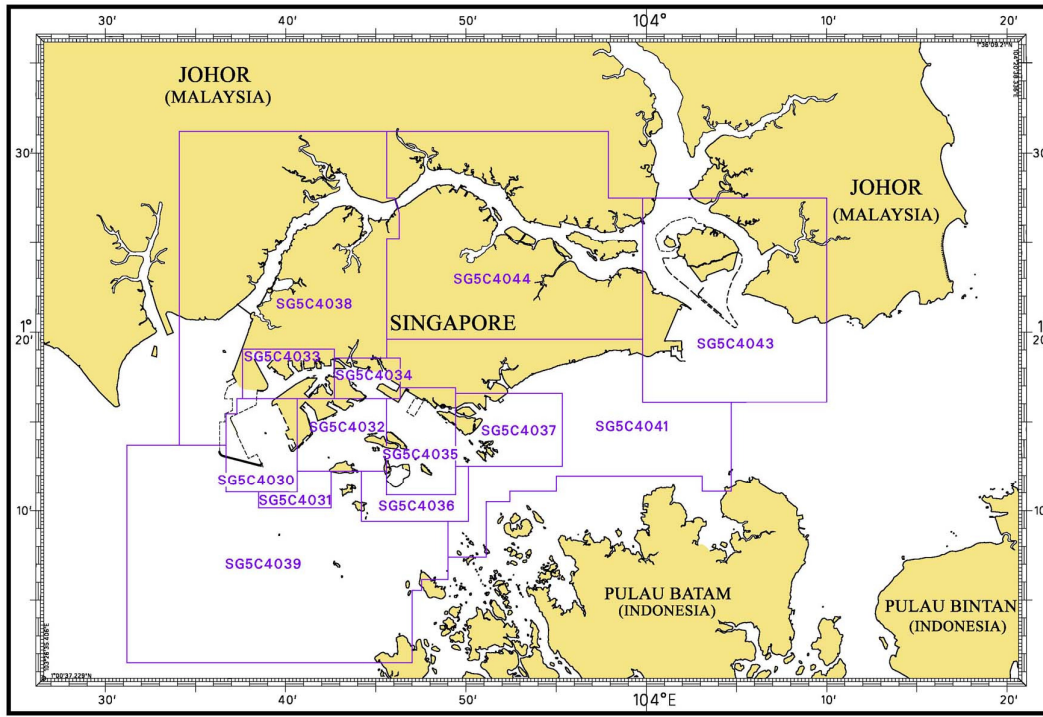
I
INDEX OF CHARTS AND PUBLICATIONS

INDEX OF DUAL BADGED CHARTS



I INDEX OF CHARTS AND PUBLICATIONS

INDEX OF SINGAPORE ELECTRONIC NAVIGATIONAL CHART (ENC)



INDEX OF SINGAPORE ENC

ENC Name	ENC Title	Latitude	Longitude
SG5C4030	West Jurong Anchorages and Temasek Fairway	1°11'050"N 1°16'300"N	103°36'700"E 103°40'640"E
SG5C4031	Western Approaches to Jurong Island	1°10'150"N 1°12'250"N	103°38'500"E 103°42'530"E
SG5C4032	Sinki Fairway	1°12'250"N 1°16'300"N	103°40'640"E 103°45'580"E
SG5C4033	Tuas Bay, West Jurong Channel and Pesek Basin	1°16'300"N 1°19'050"N	103°37'600"E 103°42'700"E
SG5C4034	East Jurong Channel, Pasir Panjang Terminal and West Keppel Fairway	1°16'300"N 1°18'550"N	103°42'700"E 103°46'356"E
SG5C4035	Western Anchorages, Jong Fairway and Cruise Bay	1°10'900"N 1°16'900"N	103°45'580"E 103°49'425"E
SG5C4036	Raffles Lighthouse to The Sisters	1°09'400"N 1°12'520"N	103°44'200"E 103°50'130"E
SG5C4037	Keppel Harbour, Tanjong Pagar Terminal and Approaches	1°12'520"N 1°16'590"N	103°49'425"E 103°55'340"E
SG5C4038	Johor Strait – Western Part	1°13'700"N 1°31'200"N	103°34'100"E 103°46'300"E
SG5C4039	Western Approaches to Main Strait	1°01'500"N 1°13'700"N	103°31'200"E 103°49'000"E
SG5C4041	Pulau Sebarok to Changi	1°07'400"N 1°19'600"N	103°45'600"E 104°04'700"E
SG5C4043	Kuala Johor and Sungai Johor	1°16'100"N 1°27'500"N	103°59'800"E 104°10'000"E
SG5C4044	Johor Strait – Eastern Part	1°19'600"N 1°31'200"N	103°45'600"E 103°59'800"E

II NEW PUBLICATIONS

NEW EDITION DUAL BADGED CHARTS PUBLISHED ON 28TH JULY 2011

Chart Number	:	4043
Title	:	Malaysia and Singapore Kuala Johor and Sungai Johor
Coverage	:	Lat 01°16.10'N 01°34.00'N Long 103°57.90'E 104°10.00'E
Scale	:	1: 30 000
Date Published	:	28 th July 2011
Size of Chart	:	748.1 x 1099.6 mm
Remarks	:	This new edition includes updated surveys covering these areas : <ul style="list-style-type: none"> • Area around Pulau Tekong • Kuala Johor • Changi Creek • Eastern Anchorages • Eastern Fairway

The existing chart of the same number published on 29th July 2010 will be superseded.

Chart Number	:	4044
Title	:	Singapore and Malaysia Johor Strait, Eastern Part
Coverage	:	Lat 01°19.00'N 01°31.20'N Long 103°45.60'E 104°03.40'E
Scale	:	1: 30 000
Date Published	:	28 th July 2011
Size of Chart	:	1100.5 x 749.5 mm
Remarks	:	This new edition includes updated surveys covering these areas : <ul style="list-style-type: none"> • Sembawang Basin • Kuala Johor • Changi Creek • East of Loyang Jetty • Sembawang Camp

The existing chart of the same number published on 29th July 2010 will be superseded.

II NEW PUBLICATIONS

NEW EDITION CHART 1 PUBLISHED ON 28TH JULY 2011

Chart Number	:	Chart 1
Title	:	Symbols Abbreviations Terms and S-57 Objects used on Nautical and Electronic Navigational Charts
Date Published	:	28 th July 2011
Remarks	:	<p>This Edition of Chart 1 contains the Symbols Abbreviations Terms and S-57 Object Classes and attributes used on International as well as national Nautical and Electronic Navigational Charts of the Hydrographic Department, Maritime and Port Authority of Singapore. These are based on the Chart Specifications and S-57 Specifications of the International Hydrographic Organization (IHO).</p> <ul style="list-style-type: none"> • The layout and numbering accords with the IHO version of Chart INT1. • Chart 1 will be available online and can be accessed directly from the MPA website: http://www.mpa.gov.sg/sites/global_navigation/publications/chart1.page • This publication is offered free of charge. <p>The existing chart of the same number published on July 2001 will be superseded.</p>

NEW EDITION DUAL BADGED CHARTS TO BE PUBLISHED ON 11TH AUGUST 2011

Chart Number	:	4039
Title	:	Indonesia, Singapore and Malaysia Western Approaches To Main Strait
Coverage	:	Lat 01°01'50"N 01°13'70"N Long 103°31'20"E 103°49'00"E
Scale	:	1: 30 000
Date Published	:	11 th August 2011
Size of Chart	:	1100.7 x 749.5 mm
Remarks	:	<p>This new edition includes updated surveys covering these areas :</p> <ul style="list-style-type: none"> • South of Tuas View Extension • Shell SBM area • Jong Fairway • Sudong Anchorages • Selat Pauh Anchorage • Sinki Fairway

The existing chart of the same number published on 23rd July 2009 will be superseded.

II NEW PUBLICATIONS

NEW EDITION DUAL BADGED CHARTS TO BE PUBLISHED ON 11TH AUGUST 2011







Chart Number	:	4040
Title	:	Indonesia, Singapore and Malaysia Tuas View To Pulau Sakijang Bendera (S. John's Island)
Coverage	:	Lat 01°07'40"N 01°19'60"N Long 103°34'10"E 103°51'90"E
Scale	:	1: 30 000
Date Published	:	11 th August 2011
Size of Chart	:	1100.6 X 749.5 mm
Remarks	:	This new edition includes updated surveys covering these areas : <ul style="list-style-type: none"> • West of Tuas Reclamation • Temasek Fairway • West Jurong Channel • East Jurong Channel • Sudong Anchorages • Shell SBM area • Jong Fairway • Portion of East Keppel Fairway

The existing chart of the same number published on 5th August 2010 will be superseded.

Chart Number	:	4041
Title	:	Singapore and Indonesia Pulau Sebarok To Changi
Coverage	:	Lat 01°07'40"N 01°19'60"N Long 103°46'90"E 104°04'70"E
Scale	:	1: 30 000
Date Published	:	11 th August 2011
Size of Chart	:	1100.6 x 749.5 mm
Remarks	:	This new edition includes updated surveys covering these areas : <ul style="list-style-type: none"> • Area along East Coast • Approaches to the Eastern Anchorages • Eastern Anchorages • Eastern Fairway • Eastern Corridor • Portion of East Keppel Fairway • Buran Channel • Jong Fairway • Shell SBM area

The existing chart of the same number published on 23rd July 2009 will be superseded.

II
NOTICES TO MARINERS AND CHART CORRECTIONS

SP1/GSP1	6 Ed 27/1/11 Last NM 59/2011	(HE025/51/2011)	*NM 66/2011
Insert	 Fl.Y.5s Banyan	1°13'33'N	103°41'59'E
Substitute	 for  BRB	1°13'35'N	103°41'58'E
Delete	light characteristics and symbol 'AIS' at	1°13'35'N	103°41'58'E
		(Port Marine Notice 87/2011)	*NM 67/2011
Insert	 Fl.Y.4s MB1	1°15'67'N	103°43'78'E
	 Fl.Y.4s MB2	1°15'61'N	103°43'62'E
	 Fl.Y.4s MB3	1°15'55'N	103°43'45'E
		(Port Marine Notice 126/2007)	*NM 68/2011
Substitute	the accompanying note, ' CHEK JAWA WETLANDS ' for the existing note centred on:	1°26'98'N	103°56'26'E

II
NOTICES TO MARINERS AND CHART CORRECTIONS

To accompany Notices to Mariners 68/2011

On Chart SP1/GSP1

CHEK JAWA WETLANDS (1°24'·7N, 103°59'·6E)
Entry into the Chek Jawa Wetlands is affected by numerous restrictions and prohibitions. For further details, see National Parks Board website <http://www.nparks.gov.sg>.

II
TEMPORARY AND PRELIMINARY NOTICES

Nil

III NAVIGATIONAL INFORMATION

***(NM 69/2011) PORT MARINE NOTICES**

The following PMNs have been shortlisted, as they would be of particular interest to mariners.

These notices can be accessed directly from MPA website:

http://www.mpa.gov.sg/sites/port_and_shipping/circulars_and_notices/port_marine_notices.page

PMN No.	Subject
75/2011	Coastal protection and restoration of mangrove biodiversity at Pulau Tekong.
82/2011	Construction of jetties at Banyan Basin (Selat Banyan West Jetty).
83/2011	Reclamation at Ayer Merbau, Jurong Island.
86/2011	Dredging works off Jurong Island.
87/2011	Installation of mooring buoys off Ayer Merbau, Jurong Island.
89/2011	Reclamation of Tuas View Extension.
91/2011	Installation of submarine water pipeline at Sentosa.
94/2011	Underwater drilling and blasting works at Pasir Panjang Fairway.

***(NM 70/2011) SINGAPOREAN PRINT-ON-DEMAND (POD) CHARTS**

Print-On-Demand (POD) Charts are the most up-to-date paper nautical charts printed for navigational use. These nautical charts are produced in accordance with the International Hydrographic Organisation (IHO) charting specifications. These official nautical charts are continually updated to the latest Notices to Mariners before they are printed and sold to users.

These POD Charts include SP1/GSP1, 200, 201, 202, 500, 501, 502 and 503.

BENEFITS TO OUR CUSTOMERS

Convenience

Customers need not make numerous hand corrections to the nautical charts before use. In addition the updated POD Charts are more accurate and reliable than offset printed charts with hand corrections.

Clarity

Clarity in the presentation of updated information as compared to lithographic printed charts, where in some cases there are several overlapping corrections over existing information.

Coverage

The POD Charts cover the Malacca and Singapore Straits, from One Fathom Bank to Horsburgh Lighthouse.

III
AMENDMENTS TO PUBLICATIONS

***(NM 71/2011) UPDATING OF PUBLICATION "SINGAPORE PORT INFORMATION 2010/2011"**

1. Page 96

Insert the following:

DEPTHS OF NAVIGATIONAL CHANNELS AND FAIRWAYS

LOCATIONS	DEPTHS (m)		REMARKS
	Delete	Insert	
Buran Channel	8.9	8.8	

2. Insert the following:

LOCATIONS	DEPTHS (m)	REMARKS
Out Bound Channel	12.8	

3. Insert the following:

LOCATIONS	DEPTHS (m)		REMARKS
	Delete	Insert	
Temasek Fairway	15.3	14.8	

4. Page 145

Insert the following:

WHARVES AND BERTHS

PSA JURONG ISLAND (PSA SINGAPORE TERMINAL)(1°16.7'N, 103°40.1'E)

Berth	Length of Berth	Depth Alongside	Controlling Depth in Approaches
G1	125m	10.7m (2011)	-
G2	125m	10.6m (2011)	-

Source: Berth List dated 6th July 2011.

IV
REPRINT OF RADIO NAVIGATIONAL WARNINGS

The following Radio Navigational Warnings have been shortlisted, as they would be of particular interest to mariners.

TT173

VESSELS IN EAST JOHOR STRAIT ARE ADVISED TO NAVIGATE WITH CAUTION WHEN NEAR THE PROJECT AREAS OFF PULAU TEKONG, CHANGI AND MALANG PAPAN AS SHALLOW WATER AREAS EXIST. VESSELS ARE ADVISED TO KEEP LOOKOUT FOR TUGS AND BARGES NAVIGATING NEAR THE PROJECT AREAS AND PASSENGER FERRIES CROSSING BETWEEN CHANGI AND PULAU TEKONG AND VICINITY OF PASIR GUDANG.

TT619 AMENDED 190041UTC MAY 2011)

DREDGER "ANDROMEDA V" IS CONDUCTING DREDGING OPERATIONS IN COORDINATES:

01° 14·890' N 103° 58·120' E

01° 16·210' N 104° 01·630' E

01° 16·090' N 104° 01·670' E

01° 14·680' N 103° 58·200' E

VESSELS ARE TO KEEP CLEAR OF THE WORKING VESSEL.

TT753

A SMALL WOODEN CARGO BOAT 10M IN LENGTH SUNK AT 01° 15·73'N 103° 32·10'E.

TT884

SALVAGE OPERATIONS UNDERWAY IN 01° 13·40'N 103° 57·75'E. ALL SHIPS ARE REQUESTED TO GIVE A WIDE BERTH OF AT LEAST 5 CABLES WHEN PASSING THE AREA.

TT908

DANGER TO NAVIGATION (071700Z)

2 TUGBOATS REPORTED SUNK at 01° 19·63'N 104° 19·28'E

TT931

VESSELS NAVIGATING IN THE SINGAPORE STRAIT ARE REQUESTED NOT TO DIRECT THEIR HIGH INTENSITY SEARCHLIGHTS SKYWARD IN THE VICINITY OF CHANGI AIRPORT TO AVOID DISRUPTION TO AIR NAVIGATION.

TT953

RACON DELTA Q(6) FL 15 SECS AT POSITION LAT 01° 03·590'N LONG 103° 38·860'E IS REPORTED UNLIT.

TT959

BUFFALO, ISOLATED DANGER BUOY FL(2)5S IN POSITION 01° 09·90'N 103° 48·10'E IS REPORTED UNLIT. VESSELS ARE ADVISED TO NAVIGATE WITH EXTRA CAUTION.

TT961

VESSELS INTENDING TO CROSS THE TRAFFIC SEPERATION SCHEME(TSS) OR PRECAUTIONARY AREAS IN THE SINGAPORE STRAIT DURING THE HOURS OF DARKNESS ARE RECOMMENDED TO DISPLAY THE NIGHT SIGNALS CONSISTING OF 3 ALL-ROUND GREEN LIGHTS IN A VERTICAL LINE WITH EFFECT FROM 1ST JULY 2011 AT 0000HRS UTC (0800HRS SINGAPORE LOCAL TIME) AS DETAILED IN MARITIME AND PORT AUTHORITY OF SINGAPORE'S PORT MARINE CIRCULAR, 02 OF 2011 DATED 30 MAY 2011.

TT968

AN UNKNOWN UNLIT BUOY WAS SIGHTED DRIFTING IN 01° 14·25'N 103° 57·1'E.

SR154

AN UNIDENTIFIED VESSEL REPORTED SUNK SOUTH WEST OF HORSBURGH AT 01° 16·12'N 104° 21·50'E.

IV
REPRINT OF RADIO NAVIGATIONAL WARNINGS

SR184 (AMENDED 270140UTC)

DANGER TO NAVIGATION

A BARGE WAS REPORTED CAPSIZED IN POSITION 01°24.45'N 104°20.16'E. 4 CREW ON BOARD HAD BEEN RESCUED. VESSEL ARE ADVISED TO KEEP A LOOKOUT AND NAVIGATE WITH CAUTION.

ISSUED BY SINGAPORE PORT OPERATIONS CONTROL CENTRE (as at 23rd July 2011)

V
**REPRINT OF ADMIRALTY NOTICES TO MARINERS
 FOR DUAL BADGED CHARTS**


These notices can be accessed directly from UKHO Website:

<http://www.ukho.gov.uk/ProductsandServices/MaritimeSafety/Pages/NMPublic.aspx>

2940* SINGAPORE – Sinki Fairway Southwards, Terumbu Pandan Northwards and Cruise Bay Eastwards – Wrecks. Depths.

Source: Maritime and Port Authority of Singapore

Chart 4030 [*previous update 959/11*] WGS84 DATUM

Insert  **Wk** (a) 1° 11'·987N., 103° 40'·263E.

Delete  **Wk**, adjacent to: (a) above

Chart 4031 [*previous update 1954/11*] WGS84 DATUM

Insert  **Wk** (a) 1° 11'·987N., 103° 40'·263E.

Delete  **Wk**, adjacent to: (a) above

Chart 4032 [*previous update 2431/11*] WGS84 DATUM

Insert depth **17** (a) 1° 15'·837N., 103° 45'·192E.

Substitute depth **17₂** for depth **17₄** 1° 16'·255N., 103° 44'·886E.

depth **15₂** for depth **14₆** enclosed by 15m contour 1° 15'·630N., 103° 45'·460E.

Delete depth **18₃** , close N of: (a) above

Chart 4035 [*previous update New Edition 14/04/2011*] WGS84 DATUM

Insert depth **7₈** (a) 1° 15'·778N., 103° 49'·298E.

Delete depth **8₇** , close SW of: (a) above

Chart 4038 [*previous update 959/11*] WGS84 DATUM

Insert  **Wk** (a) 1° 11'·99N., 103° 40'·26E.

Delete  **Wk**, adjacent to: (a) above

Chart 4039 [*previous update 1954/11*] WGS84 DATUM

Insert  **Wk** (a) 1° 11'·99N., 103° 40'·26E.

Delete  **Wk**, adjacent to: (a) above

Chart 4040 [*previous update 2431/11*] WGS84 DATUM

Insert  **Wk** (a) 1° 11'·99N., 103° 40'·26E.







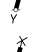



Delete  **Wk**, adjacent to: (a) above

V
**REPRINT OF ADMIRALTY NOTICES TO MARINERS
 FOR DUAL BADGED CHARTS**

**3258* SINGAPORE – Pulau Sakijang Bendera to Pulau Sakijang Pelepah – Cooper Channel – Floating barrier.
 Buoyage.**

Source: Maritime and Port Authority of Singapore

Chart 4037 [*previous update 2219/11*] WGS84 DATUM

Insert	boom, pecked line, joining:	(a) 1° 13' 273N., 103° 51' 073E. (b) 1° 13' 313N., 103° 51' 061E. (c) 1° 13' 326N., 103° 51' 079E. (d) 1° 13' 349N., 103° 51' 085E. (e) 1° 13' 355N., 103° 51' 125E. (b)-(d) above
	legend, Boom , along:	
Substitute	 Fl.Y.4s SJ1 for  Fl.Y.4s SJ1  Fl.Y.4s SJ2 for  Fl.Y.4s SJ2  Fl.Y.4s SJ3 for  Fl.Y.4s SJ3  Fl.Y.4s SJ4 for  Fl.Y.4s SJ4  Fl.Y.4s SJ5 for  Fl.Y.4s SJ5	(a) above (b) above (c) above (d) above (e) above

Updated to Admiralty Notices to Mariners Edition No. 30 of 2011 dated 28th July 2011.

SINGAPORE ELECTRONIC NAVIGATIONAL CHART (ENC) DISTRIBUTORS

Please approach any of the appointed distributors to purchase the Singapore ENC.

DISTRIBUTOR	ADDRESS	TELEPHONE/FAX NO./EMAIL/WEBSITE
DPM (Singapore) Pte Ltd	1 Maritime Square, #09-72 HarbourFront Centre, Singapore 099253	Tel. No.: +65 6270 4060 Fax No.: +65 6276 3858 Email: sales@dpmssingapore.com.sg Website: http://www.dpmsingapore.com.sg
Motion Smith	15 Jalan Kilang Barat #08-01/05 Frontech Centre Singapore 159357	Tel. No.: +65 6220 5098 Fax No.: +65 6225 4902 Email: sales@motsmith.com Website: http://www.motsmith.com
Transas Marine Pacific Pte Ltd	Cyber Centre 16 & 18 Jalan Kilang Barat Singapore 159358	Tel. No.: +65 6271 0200 Fax No.: +65 6271 7300 Email: dominic@transas.com.sg Website: http://www.transas.com.sg
Vector Services Pte Ltd	15 West Coast Highway, #02-14A Pasir Panjang Building Singapore 117861	Tel. No.: +65 6777 3602 Fax No.: +65 6777 9203 Email: kwchoy@pacific.net.sg
ChartWorld GmbH	Ruhrstrasse 90, D-22761 Hamburg, Germany	Tel. No.: +49 40 853 58 6942 Fax No.: +49 40 853 58 6949 Email: sales@chartworld.com Website : http://www.chartworld.com
Japan Hydrographic Association Electronic Charts Division	Daiichi Sogo Bldg, 6F 1-6-6, Hanedakuko, Ota-ku, Tokyo 144-0041, Japan	Tel. No.: +81 3 5708 7093 Fax No.: +81 3 5708 7094 Email: shimizu-6kj@jha.jp Website: http://www.jha.or.jp/en/jha/
Jeppesen Norway A/S	P.O Box 212 , N-4371 Egersund, Norway	Tel No.: +47 514 64 700 Fax No: +47 514 64 701 Email: license.marine@jeppesen.com Website : http://www.jeppesen.com
PRIMAR STAVANGER	Lervigsveien 36, P.O Box 60, N-4001 Stavanger, Norway	Tel. No.: +47 51 93 9500 Fax No.: +47 51 93 9501 Email: sales@ecc.no Website : http://www.primar.no
United Kingdom Hydrographic Office	Admiralty Way, Taunton, Somerset TA1 2DN United Kingdom	Tel. No.: +44 1823 337900 Fax No.: +44 1823 284077 Email: ENC.SalesReports@ukho.gov.uk Website: http://www.ukho.gov.uk

**Chart Agents for the Maritime and Port Authority of Singapore
Nautical Charts and Publications**

Please approach any of the appointed chart agent to purchase the Singapore Nautical Charts and Publications.

CHART AGENT	ADDRESS	TELEPHONE/FAX NO./EMAIL/WEBSITE
DPM (Singapore) Pte Ltd	1 Maritime Square, #09-72 HarbourFront Centre, Singapore 099253	Tel. No.: +65 6270 4060 Fax No.: +65 6276 3858 Email: sales@dpmssingapore.com.sg Website: http://www.dpmsingapore.com.sg
E.W. Liner Charts & Publications Pte Ltd	102F, Pasir Panjang Road, #08-01, Citilink Warehouse Complex, Singapore 118530	Tel. No.: +65 6323 0773 Fax No.: +65 6323 0775 Email: ewliner@singnet.com.sg Website: http://www.ewliner.com
Motion Smith	15 Jalan Kilang Barat #08-01/05 Frontech Centre Singapore 159357	Tel. No.: +65 6220 5098 (After office hours: +65 8163 9993) Fax No.: +65 6225 4902 Email: sales@motsmith.com Website: http://www.motsmith.com

HYDROGRAPHIC NOTE - Instructions

1. Mariners are requested to notify the Chief Hydrographer, Maritime and Port Authority of Singapore, when new or suspected dangers to navigation are discovered, changes are observed in aids to navigation or where corrections to nautical publications may be necessary. Reports, which cannot be confirmed or are lacking in certain details should not be withheld.
2. Any ambiguities of time, positioning and depth should be stressed and any firm expectation of being able to check the information provided on a following voyage should be mentioned.
3. Mariners using satellite position fixing systems, eg. GPS, should provide details of equipment and datum used (where applicable). Where bearings (true or magnetic) are taken visually or by radar to fix a position, it should include more than two objects in order to provide a check on its accuracy. A position may also be defined by bearing and distance from a conspicuous object eg. beacon, lighthouse etc.
4. The note should include a tracing or a digital image of the chart used and the details should be clearly marked.
5. Echo sounders frequently register greater depths than the advertised maximum depth for the equipment, eg. a trace appearing at 50 metres may be in fact be 550 metres or even 1050 metres for equipment whose maximum depth is 500 metres. Erroneous depths caused by 2nd transmission error can usually be recognised by the following:
 - (a) the tracing being weaker than normal for the depth registered,
 - (b) the trace appearing to pass through the transmission line,
 - (c) the feathery nature of the trace.
6. Upon receipt of a hydrographic note, a Notice to Mariners may be issued. The sender's vessel or name is quoted as the source unless the same information is also received in foreign Notices to Mariners.
7. Reports of shoals, uncharted dangers and defects in aids to navigation may also be made to the appropriate Singapore Port Operations Control Centre on VHF Channels 10, 12, 14, 68 or 73.

HYDROGRAPHIC NOTE

To:

Chief Hydrographer
Maritime and Port Authority of Singapore
460 Alexandra Road PSA Building #20-00
Singapore 119963

Tel : (65) 6375 1227
Fax : (65) 6278 7646
Email : hydrographic@mpa.gov.sg

Sender's Contact Details :

Date :

Name of Vessel :

Address of Sender :

Tel : Fax :

Email :

Nature of Observation :

General Location :

Subject :

Position : Lat. Long.

Charts Used :

Date & Time of Observation :

Details :

.....

.....

Attachment :

Equipment Used :

Type of Position Fixing : GPS / DGPS Others :

Type of Echo Sounder :

Name and Signature :

Ship's/Company's Stamp :