



SINGAPOREAN NOTICES TO MARINERS

SECTION	CONTENT	Page
I	Index of Charts & Publications	3
II	New Publications	6
	Notices to Mariners and Chart Corrections	9
	Temporary and Preliminary Notices	10
III	Navigational Information	11
	Amendments to Publications	13
IV	Reprint of Radio Navigational Warnings	15
V	Extract of Admiralty Notices to Mariners for Dual Badged Charts	16

The monthly Notices to Mariners contain corrective information affecting charts published by the Hydrographic Department, Maritime and Port Authority of Singapore. The information contained in these Notices should be updated on the charts affected. Notices under Section II apply only to the particular Singaporean Chart(s) indicated.

Mariners are requested to notify the Chief Hydrographer, Maritime and Port Authority of Singapore, immediately on the discovery of new dangers or suspected dangers to navigation and of changes or defects in aids to navigation. See Hydrographic Note on back page.

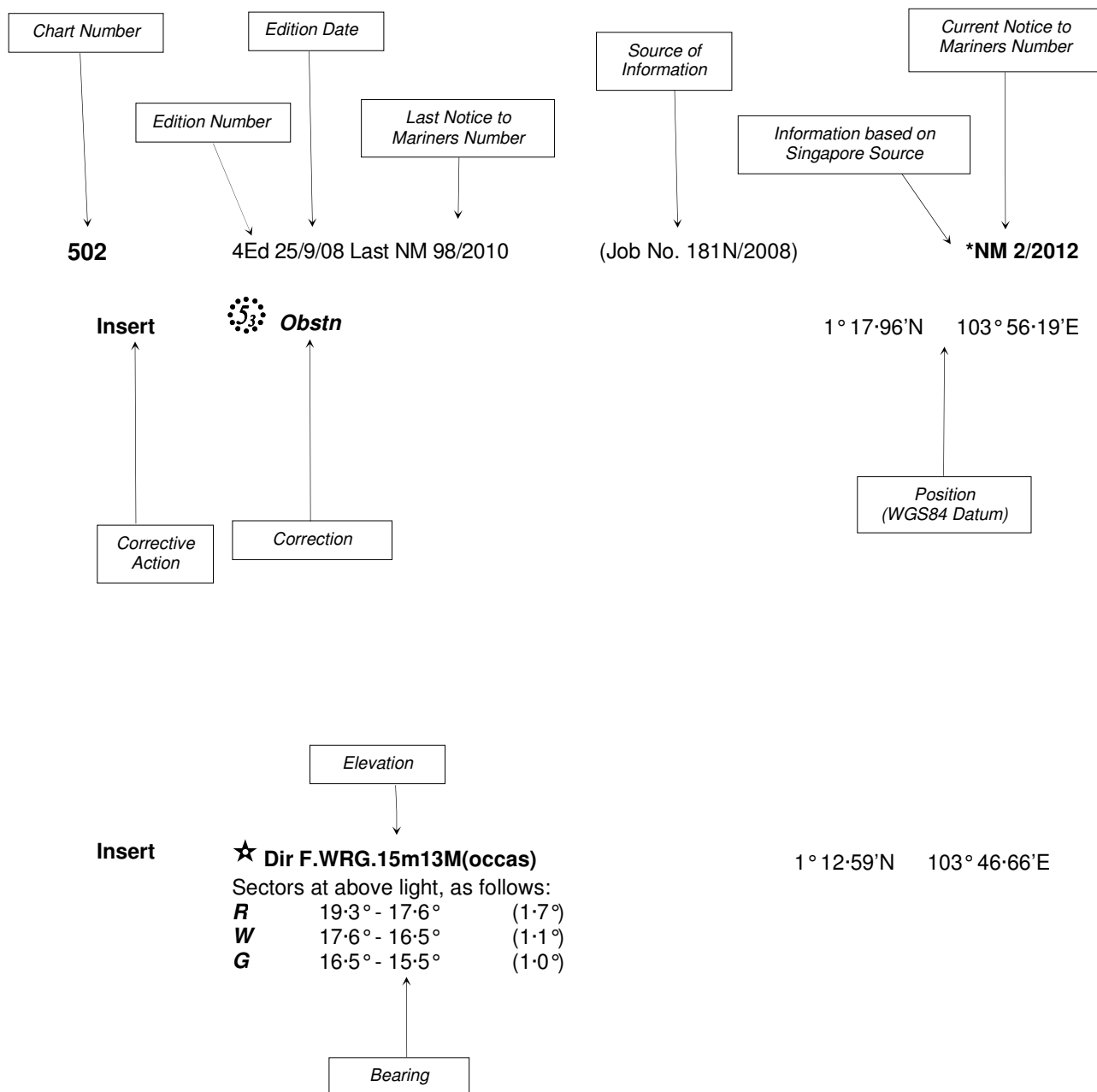
The monthly Singaporean Notices to Mariners can be accessed directly from the MPA website:
[http://www.mpa.gov.sg/sites/port_and_shipping/circulars_and_notices/singapore_notices_to_mariners\(ntm\).page](http://www.mpa.gov.sg/sites/port_and_shipping/circulars_and_notices/singapore_notices_to_mariners(ntm).page)

This service is offered free of charge.

Hydrographic Department
Maritime and Port Authority of Singapore
460 Alexandra Road
PSA Building #20-00
Singapore 119963
Tel: (65) 6375 1227
Fax: (65) 6278 7646

EXPLANATION OF FORMAT

The elements of a typical chart correction are explained below.



Notes:

- a) Notice to Mariners number followed by:
T indicates a Temporary Notice (eg. ***NM 3T/2012**).
P indicates a Preliminary Notice (eg. ***NM 4P/2012**).
- b) Bearings are true reckoned clockwise from 000° to 359°; those relating to lights are from seaward.
- c) Heights and elevations are above Mean High Water Springs.

I
INDEX OF CHARTS AND PUBLICATIONS

INDEX OF AFFECTED CHARTS

DESCRIPTION	NOTICE NO.	PAGE NO.
Index of Singaporean Charts	-	3
Index of Dual Badged Charts	-	4
Index of Singapore Electronic Navigational Chart (ENC)	-	5
New Edition Dual Badged Charts	-	6, 7
Singapore Tide Tables 2013	-	8
Singaporean Chart GSP1, SP1	*60, 61, *62	9
Singaporean Chart 200	63	9
Singaporean Chart 202	64, 65	9
Singaporean Chart 502	*66	9
Singaporean Chart 503	65, 67	9
Temporary and Preliminary Notices	68T, *69T	10
Port Marine Notices	*70	11
Singaporean Print-On-Demand (POD) Charts	*71	11, 12
Amendments to Publications	*72	13, 14
Reprint of Radio Navigational Warnings	-	15
Extract of Admiralty Notices to Mariners for Dual Badged Charts	-	16, 17
Singapore Electronic Navigational Chart (ENC) Distributors	-	18
Chart Agents for the Maritime and Port Authority of Singapore Nautical Charts and Publications	-	19

*Denotes information are based on Singaporean source.

I
INDEX OF CHARTS AND PUBLICATIONS

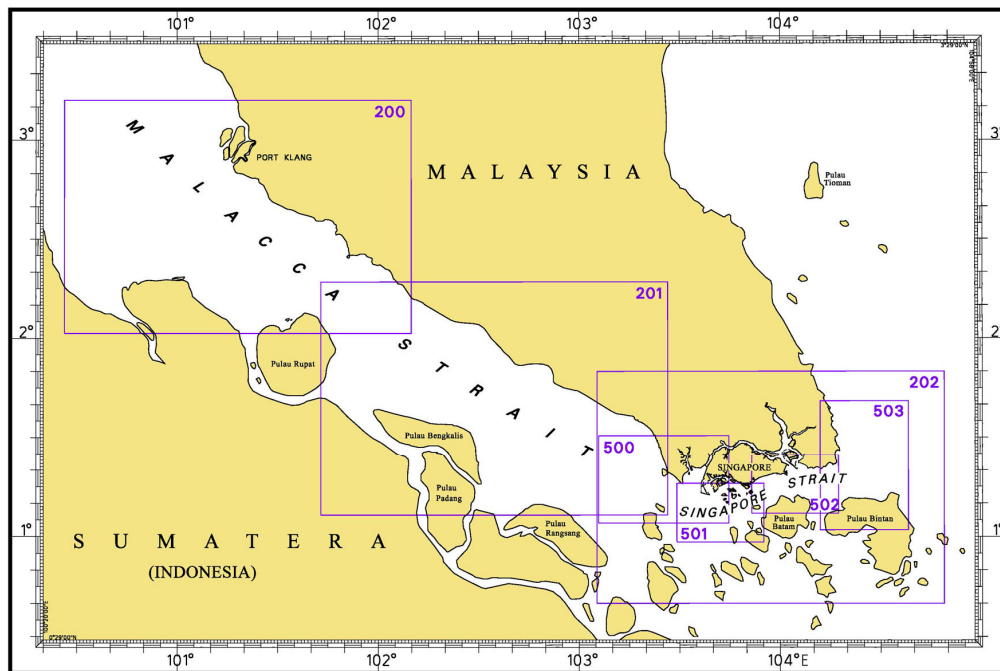
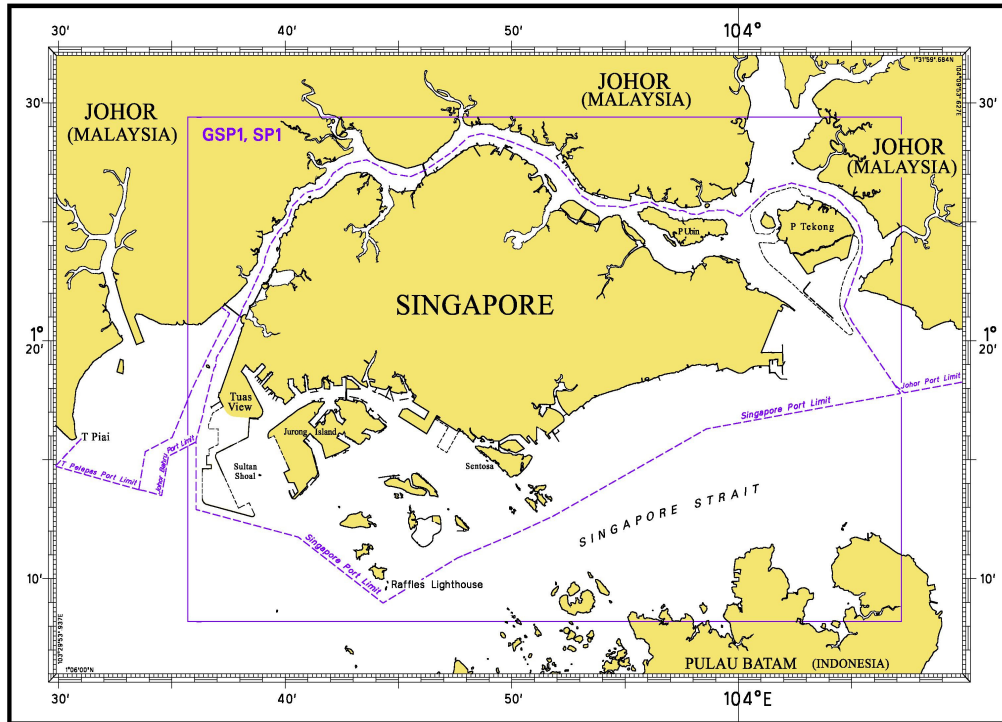
INDEX OF NOTICES

NOTICE NO.	DESCRIPTION	PAGE NO.
-	Index of Singaporean Charts	3
-	Index of Dual Badged Charts	4
-	Index of Singapore Electronic Navigational Chart (ENC)	5
-	New Edition Dual Badged Charts	6, 7
-	Singapore Tide Tables 2013	8
*60, 61, *62	Singaporean Chart GSP1, SP1	9
63	Singaporean Chart 200	9
64, 65	Singaporean Chart 202	9
*66	Singaporean Chart 502	9
65, 67	Singaporean Chart 503	9
68T, *69T	Temporary and Preliminary Notices	10
*70	Port Marine Notices	11
*71	Singaporean Print-On-Demand (POD) Charts	11, 12
*72	Amendments to Publications	13, 14
-	Reprint of Radio Navigational Warnings	15
-	Extract of Admiralty Notices to Mariners for Dual Badged Charts	16, 17
-	Singapore Electronic Navigational Chart Distributors	18
-	Chart Agents for the Maritime and Port Authority of Singapore Nautical Charts and Publications	19

* Denotes information are based on Singaporean source.

I INDEX OF CHARTS AND PUBLICATIONS

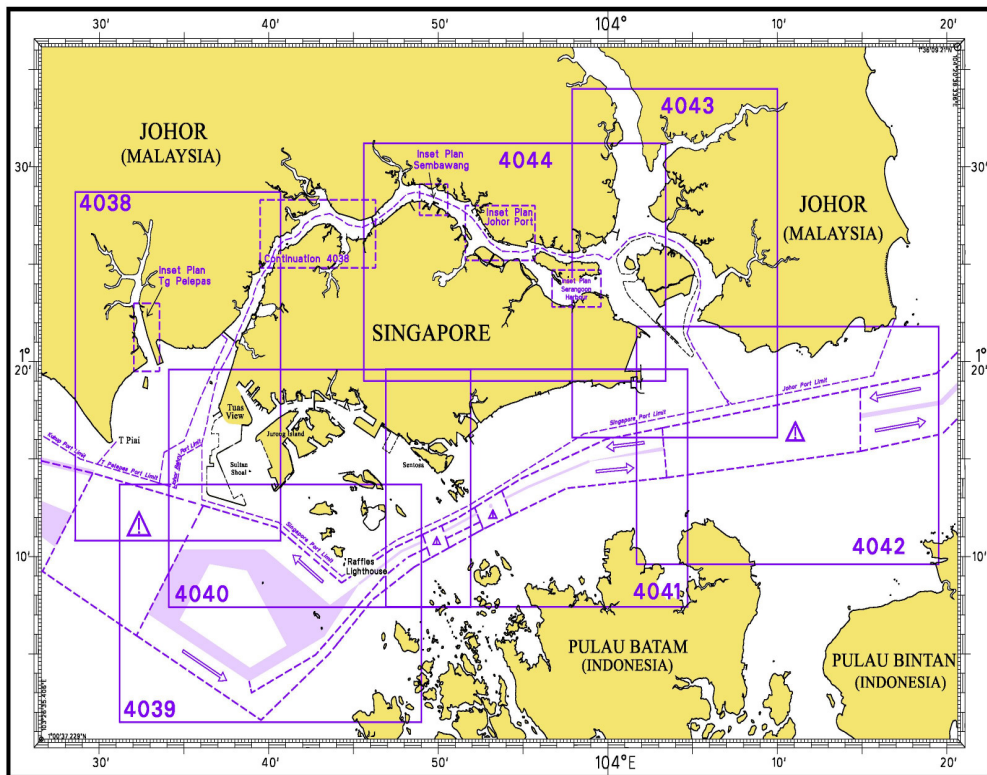
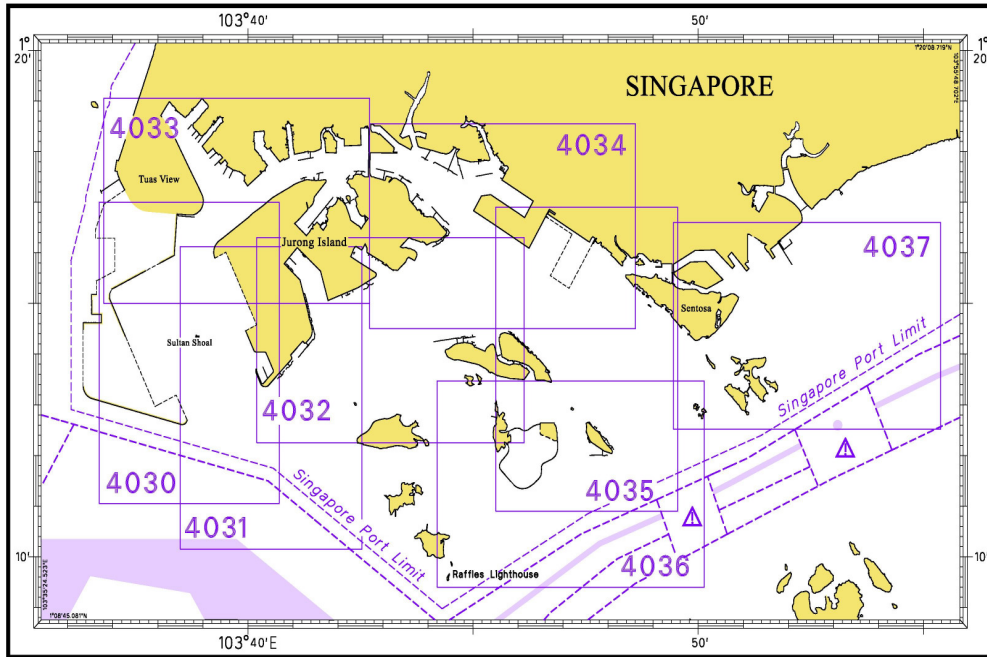
INDEX OF SINGAPOREAN CHARTS



Notes:
 Updated SINGAPOREAN Charts are available through our Print-On-Demand (POD) Chart Service. For more information, refer to Section III – Navigational Information. These charts can be purchased from our authorised Chart Agents.

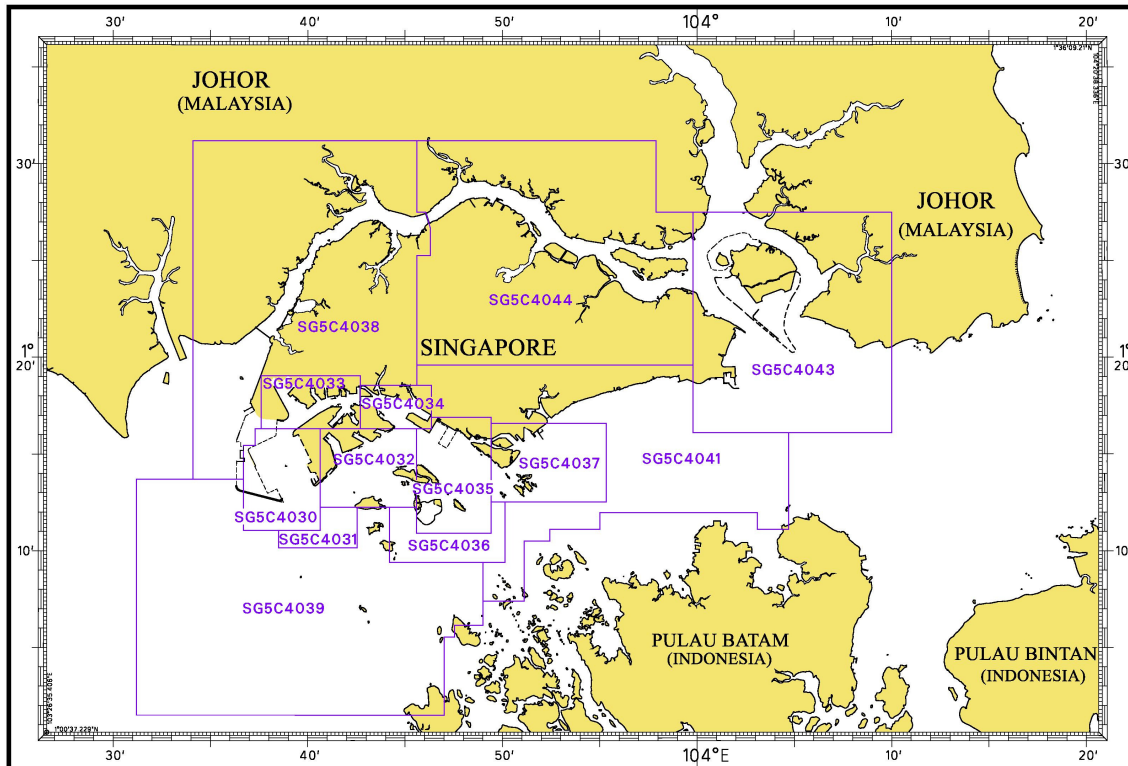
I INDEX OF CHARTS AND PUBLICATIONS

INDEX OF DUAL BADGED CHARTS



I INDEX OF CHARTS AND PUBLICATIONS

INDEX OF SINGAPORE ELECTRONIC NAVIGATIONAL CHART (ENC)



COVERAGE OF SINGAPORE ELECTRONIC NAVIGATIONAL CHART (ENC)

ENC Name	ENC Coverage	ENC Edition
SG5C4030	West Jurong Anchorages and Temasek Fairway	5 th Edition (3/05/2012)
SG5C4031	Western Approaches to Jurong Island	5 th Edition (3/05/2012)
SG5C4032	Sinki Fairway	7 th Edition (3/05/2012)
SG5C4033	Tuas Bay, West Jurong Channel and Pesek Basin	5 th Edition (3/05/2012)
SG5C4034	East Jurong Channel, Pasir Panjang Terminal and West Keppel Fairway	10 th Edition (3/05/2012)
SG5C4035	Western Anchorages, Jong Fairway and Cruise Bay	11 th Edition (3/05/2012)
SG5C4036	Raffles Lighthouse to The Sisters	6 th Edition (3/05/2012)
SG5C4037	Keppel Harbour, Tanjong Pagar Terminal and Approaches	6 th Edition (3/05/2012)
SG5C4038	Johor Strait – Western Part	5 th Edition (3/05/2012)
SG5C4039	Western Approaches to Main Strait	5 th Edition (3/05/2012)
SG5C4041	Pulau Sebarok to Changi	6 th Edition (3/05/2012)
SG5C4043	Kuala Johor and Sungai Johor	7 th Edition (3/05/2012)
SG5C4044	Johor Strait – Eastern Part	7 th Edition (3/05/2012)

II NEW PUBLICATIONS

NEW EDITION DUAL BADGED CHARTS TO BE PUBLISHED ON 16TH AUGUST 2012

Chart Number	:	4042
Title	:	Indonesia, Malaysia and Singapore Changi To Pulau Mungging and Tanjung Buntan to Tanjung Tondang
Coverage	:	Lat 01°09'55"N 01°21'75"N Long 104°01'70"E 104°19'50"E
Scale	:	1: 30 000
Date Published	:	16 th August 2012
Size of Chart	:	1100.6 x 749.5 mm
Remarks	:	This new edition includes updated surveys covering these areas : <ul style="list-style-type: none"> • Eastern Bunkering 'A' Anchorage • Cable Corridor Area • Area South of Pulau Tekong • Johor Shoal

The existing chart of the same number published on 17th February 2011 is to be superseded.

Chart Number	:	4043
Title	:	Malaysia and Singapore Kuala Johor and Sungai Johor
Coverage	:	Lat 01°16'10"N 01°34'00"N Long 103°57'90"E 104°10'00"E
Scale	:	1: 30 000
Date Published	:	16 th August 2012
Size of Chart	:	748.1 x 1099.6 mm
Remarks	:	This new edition includes updated surveys covering these areas : <ul style="list-style-type: none"> • Area around Pulau Tekong • Kuala Johor • Changi Creek • Area around east of Loyang Jetty • Changi General Purposes Anchorage • Man-of –War Anchorage

The existing chart of the same number published on 28th July 2011 is to be superseded.

II NEW PUBLICATIONS

NEW EDITION DUAL BADGED CHART TO BE PUBLISHED ON 16TH AUGUST 2012

Chart Number : 4044
Title : Singapore and Malaysia
 Johor Strait, Eastern Part
Coverage : Lat 01°19'00"N 01°31'20"N
 Long 103°45'60"E 104°03'40"E
Scale : 1: 30 000
Date Published : 16th August 2012
Size of Chart : 1100.5 x 749.5 mm
Remarks : This new edition includes updated surveys covering these areas :

- Sembawang Basin
- Dockyard Reach
- Kuala Johor
- East of Loyang Jetty
- Denman Shoal

The existing chart of the same number published on 28th July 2011 is to be superseded.

NEW EDITION DUAL BADGED CHART TO BE PUBLISHED ON 27TH SEPTEMBER 2012

Chart Number : 4035
Title : Port of Singapore – Western Anchorages, Jong Fairway and Cruise Bay
Coverage : Lat 01°10'90"N 01°16'90"N
 Long 103°45'50"E 103°49'54"E
Scale : 1: 10 000
Date Published : 27th September 2012
Size of Chart : 749.4 x 1105.7 mm
Remarks : This new edition includes updated surveys covering these areas :

- Shell SBM Area
- Area west of Pulau Sebarok
- Area around Pulau Bukom
- Area south of the Spoil Ground
- Jong Fairway
- East Jurong Channel

The existing chart of the same number published on 29th September 2011 is to be superseded.

**II
NEW PUBLICATIONS**

**PUBLICATION OF SINGAPORE TIDE TABLES YEAR 2013 TO BE PUBLISHED ON
1ST SEPTEMBER 2012**

Summary of Publication

This 251-page book contains Tidal Height and Tidal Stream Predictions covering stations in Singapore port waters and along the Malacca and Singapore Straits.

To Whom Will It Be Useful?

Mariners, shipping community, port users and other interested users.






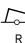
Frequency of Publication

Annually.

Cost of Publication

To be advised by Chart Agents.

II NOTICES TO MARINERS AND CHART CORRECTIONS

GSP1/SP1	7 Ed 3/05/12	(HD/HE025/79/2012)	*NM 60/2012
Insert	 FI(2)G.4s Pempang Laut	1°13'82"N	103°43'04"E
		(Royal Malaysian Navy Notices No. 5/102/2012)	NM 61/2012
Insert	 Wk legend (exting) for Tebrau Rear Beacon legend (exting) for Tebrau Front Beacon	1°27'49"N 1°29'15"N 1°28'93"N	103°46'32"E 103°47'73"E 103°48'38"E
		(HD/HE025/55/2012)	*NM 62/2012
Insert	 FI.Y.6s TPU-N1	1°16'65"N	103°39'88"E
<hr/>			
200	3 Ed 22/09/11 Last NM 43/2012	(Royal Malaysian Navy Notices No. 4/82/2012)	NM 63/2012
Substitute	named ' P Payong ' for P Perjudi	2°24'90"N	101°55'03"E
<hr/>			
202	6 Ed 24/09/09 Last NM 52/2012	(Admiralty Notice No. 28/3001/2012)	NM 64/2012
Insert	depth 19 enclosed by 20m contour	1°05'75"N	104°11'15"E
Delete	depth 21 at	1°05'57"N	104°11'12"E
		(Indonesian NM No. 29/247/2012)	NM 65/2012
Insert	 FI(2)5s6M	1°16'12"N	104°22'30"E
<hr/>			
502	6 Ed 3/05/12 Last NM 52/2012	(Singapore NM No. 9/86/1994)	*NM 66/2012
Delete	disused submarine cable joining from :	1°18'65"N	104°15'47"E
	to :	1°18'97"N	104°17'31"E
		(chart border)	
<hr/>			
503	4 Ed 1/04/10 Last NM 113/2011	(Indonesian NM No. 29/247/2012)	NM 65/2012
Insert	 FI(2)5s6M	1°16'12"N	104°22'30"E
		(Admiralty Notice No. 28/3001/2012)	NM 67/2012
Delete	 R	1°03'30"N	104°13'37"E

II TEMPORARY AND PRELIMINARY NOTICES

(NM 68T/2012) MV SST GROUNDED AT MIDDLE ROCKS

Purpose : This is to notify a bulk carrier vessel is grounded at Middle Rocks, in Malaysian waters and the details are as follows:

Incident location : Latitude 1° 19·32' N Longitude 104° 24·24'

Vessel's Particulars : Vessel Name : SST
Registry : Panama
IMO No : 8323915
Vessel Type : Bulk Carrier

Caution : All vessels and mariners are advised to keep a sharp look out and keep a safe distance when navigating in the vicinity.

Charts affected : 202 and 503

Source : Malaysia Port Circular No. 18/2012.

*(NM 69T/2012) New positions of Helios 2 and Helios 3 Buoys

Purpose : To make way for the construction of secondary SLNG Terminal at Jurong Island.

Date of work : With effect from 30th April to 29th September 2012.

Operating hours : Daily, including Sunday and Public Holiday .

1. The new position co-ordinates of buoys Helios 2 and Helios 3 are as follows :

Position	(Co-ordinates: WGS84)	
	Latitude (N)	Longitude (E)
Helios 2	1° 13·91'	103° 40·37'
Helios 3	1° 13·72'	103° 40·51'

2. **Charts affected :** 4030, 4031, 4039 and 4040.

3. **Caution :** Mariners are advised to navigate with caution.

Source : HD/HE025/58 & 59/2012.

III NAVIGATIONAL INFORMATION

*(NM 70/2012) PORT MARINE NOTICES

The following PMNs have been shortlisted, as they would be of particular interest to mariners.

These notices can be accessed directly from MPA website:

http://www.mpa.gov.sg/sites/port_and_shipping/circulars_and_notices/port_marine_notices.page

PMN No.	Subject
85/2012	Coastal protection and restoration of mangrove biodiversity at Pulau Tekong.
86/2012	Construction of sea water intake structure off Jurong Island.
87/2012	Marine construction works off Marina Barrage.
91/2012	Dredging works at Gul Basin off Keppel Shipyard.
93/2012	Dredging works off Pasir Panjang Terminal.
94/2012	Reclamation at Pasir Panjang Terminal and Pasir Panjang Wharves.
95/2012	Reclamation at Pulau Tekong.
96/2012	Restoration work along shoreline of Pulau Ubin.
97/2012	Reclamation at Ayer Merbau Jurong Island.
98/2012	Mooring and unmooring of vessels at mooring buoys at Banyan Basin, Jurong Island.
99/2012	Soil investigation works off Tuas View.
100/2012	Dredging works off Pasir panjang Ferry Terminal.

*(NM 71/2012) SINGAPOREAN PRINT-ON-DEMAND (POD) CHARTS

Print-On-Demand (POD) Charts are the most up-to-date paper nautical charts printed for navigational use. These nautical charts are produced in accordance with the International Hydrographic Organisation (IHO) chart specifications. These official nautical charts are continually updated to the latest Notices to Mariners before they are printed and sold to users.

These POD Charts include GSP1, SP1, 200, 201, 202, 500, 501, 502 and 503.

BENEFITS TO OUR CUSTOMERS

Convenience

Customers need not make numerous hand corrections to the nautical charts before use. In addition the updated POD Charts are more accurate and reliable than offset printed charts with hand corrections.

III
NAVIGATIONAL INFORMATION

Clarity

Clarity in the presentation of updated information as compared to lithographic printed charts, where in some cases there are several overlapping corrections over existing information.

Coverage

The POD Charts cover the Malacca and Singapore Straits, from One Fathom Bank to Horsburgh Lighthouse.

III
AMENDMENTS TO PUBLICATIONS

***(NM 72/2012) UPDATING OF PUBLICATION "SINGAPORE PORT INFORMATION 2012/2013"**

1. Page 130

**CHARACTERISTICS OF AIDS TO NAVIGATION
WEST JURONG CHANNEL**

Insert the following:

Name of Beacon	Position Lat.N Long.E Deg Min	Structure, colour & Shape	Light Characteristic	Owner
TPU-N1 Beacon	01°16.646' 103°39.880'	Yellow spar with 'X' topmark	Fl.Y.6s	TP Utilities Pte Ltd
TPU-N2 Beacon	01°16.637' 103°39.866'	Yellow spar with 'X' topmark	Fl.Y.6s	TP Utilities Pte Ltd

Source: HD/HE025/55 & 56/2012

2. Page 130

TUAS CHANNEL

Amend the following:

Name of Beacon	Position	
	Delete	Insert
Piatu Beacon	01°18.540' N 103°38.302' E	01°18.539' N 103°38.302' E

Source: HD/HE025/67/2012

3. Page 135

Delete the following:

Name of Buoy	Position Lat.N Long.E Deg Min	Structure, colour & Shape	Light Characteristic	Owner
PKHV12 Buoy	01°16.532' 103°46.648'	Yellow pillar	Fl(2)Y.2s	Penta

Source: Port Marine Notice No. 94/2012

4. Page 137

SINKI FAIRWAY

Insert the following:

Name of Buoy	Position	Structure, colour & Shape	Light Characteristic	Owner
Pempang Laut Buoy	01°13.819' N 103°43.044' E	Green Conical	Fl(2)G.4s	MPA

Source: HD/HE025/79/2012

III
AMENDMENTS TO PUBLICATIONS

5. Page 143

EAST KEPPEL FAIRWAY

Amend the following:

Name of Beacon	Position	
	Delete	Insert
Outer Shoal Beacon	01°15-019' N 103°51-811' E	01°15-018' N 103°51-812' E

Source: HD/HE025/66/2012

IV
REPRINT OF RADIO NAVIGATIONAL WARNINGS

The following Radio Navigational Warnings have been shortlisted, as they would be of particular interest to mariners.

TT022 (AMENDED 060130Z)

A COASTER VESSEL WAS REPORTED SUNK IN POSITION 01°10'80"N 103°34'00"E.
VESSELS ARE TO GIVE A WIDE BERTH AND NAVIGATE WITH CAUTION.

TT049

WRECK REMOVAL OF MANO NO 11 AND DIVING OPERATIONS IS CONDUCTED AT THE FOLLOWING COORDINATES

Pt A 01°14.98'N 103°55.08'E

Pt B 01°15.21'N 103°55.58'E

Pt C 01°14.84'N 103°55.58'E

Pt D 01°14.70'N 103°55.08'E

ALL SHIPS ARE TO KEEP WELL CLEAR OF THE AREA.

TT173

VESSELS IN EAST JOHOR STRAIT ARE ADVISED TO NAVIGATE WITH CAUTION WHEN NEAR THE PROJECT AREAS OFF PULAU TEKONG, CHANGI AND MALANG PAPAN AS SHALLOW WATER AREAS EXIST. VESSELS ARE ADVISED TO KEEP LOOKOUT FOR TUGS AND BARGES NAVIGATING NEAR THE PROJECT AREAS AND PASSENGER FERRIES CROSSING BETWEEN CHANGI AND PULAU TEKONG AND VICINITY OF PASIR GUDANG.

TT884

SALVAGE OPERATIONS UNDERWAY IN 01°13'40"N 103°57'75"E. ALL SHIPS ARE REQUESTED TO GIVE A WIDE BERTH OF AT LEAST 5 CABLES WHEN PASSING THE AREA.

TT931

VESSELS NAVIGATING IN THE SINGAPORE STRAIT ARE REQUESTED NOT TO DIRECT THEIR HIGH INTENSITY SEARCHLIGHTS SKYWARD IN THE VICINITY OF CHANGI AIRPORT TO AVOID DISRUPTION TO AIR NAVIGATION.

TT961

VESSELS INTENDING TO CROSS THE TRAFFIC SEPARATION SCHEME(TSS) OR PRECAUTIONARY AREAS IN THE SINGAPORE STRAIT DURING THE HOURS OF DARKNESS ARE RECOMMENDED TO DISPLAY THE NIGHT SIGNALS CONSISTING OF 3 ALL-ROUND GREEN LIGHTS IN A VERTICAL LINE WITH EFFECT FROM 1ST JULY 2011 AT 0000UTC (0800SGT) AS DETAILED IN MARITIME AND PORT AUTHORITY OF SINGAPORE'S PORT MARINE CIRCULAR, 02 OF 2011 DATED 30 MAY 2011.

ISSUED BY SINGAPORE PORT OPERATIONS CONTROL CENTRE (as at 15th July 2012)

V
**EXTRACT OF ADMIRALTY NOTICES TO MARINERS
 FOR DUAL BADGED CHARTS**

These notices can also be accessed directly from UKHO Website:

<http://www.ukho.gov.uk/ProductsandServices/MaritimeSafety/Pages/NMPublic.aspx>

2951* SINGAPORE – Sultan Shoal to Changi East – Legends.

Source: UKHO

Note: Charts 4030, 4031, 4032, 4033, 4034, 4037, 4039, 4040, 4041 are to be deleted from Notice 1729(P)/12

Chart 4030 [*previous update New Edition 03/05/2012*] WGS84 DATUM

Amend	legend to, THIS CHART SHOWS CHANGES TO ANCHORAGES WHICH CAME INTO EFFECT 0000 HOURS UT, 1 ST JUNE 2012	outside N border
Delete	legend, <i>See NM 1729(P)/12</i> , centred on:	1° 15'·060N., 103° 37'·570E. 1° 14'·270N., 103° 38'·110E.

Chart 4031 [*previous update New Edition 03/05/2012*] WGS84 DATUM

Amend	legend to, THIS CHART SHOWS CHANGES TO ANCHORAGES WHICH CAME INTO EFFECT 0000 HOURS UT, 1 ST JUNE 2012	outside N border
Delete	legend, <i>See NM 1729(P)/12</i> , centred on:	1° 14'·510N., 103° 38'·770E.

Chart 4032 [*previous update New Edition 03/05/2012*] WGS84 DATUM

Amend	legend to, THIS CHART SHOWS CHANGES TO ANCHORAGES AND FAIRWAYS WHICH CAME INTO EFFECT 0000 HOURS UT, 1 ST JUNE 2012	outside N border
Delete	legend, <i>See NM 1729(P)/12</i> , centred on:	1° 13'·225N., 103° 42'·950E. 1° 13'·185N., 103° 43'·885E.

Chart 4033 [*previous update New Edition 03/05/2012*] WGS84 DATUM

Amend	legend to, THIS CHART SHOWS CHANGES TO ANCHORAGES WHICH CAME INTO EFFECT 0000 HOURS UT, 1 ST JUNE 2012	outside N border
Delete	legend, <i>See NM 1729(P)/12</i> , centred on:	1° 15'·255N., 103° 38'·430E.

Chart 4039 [*previous update 2595/12*] WGS84 DATUM

Amend	legend to, THIS CHART SHOWS CHANGES TO ANCHORAGES WHICH CAME INTO EFFECT 0000 HOURS UT, 1 ST JUNE 2012	outside N border
Delete	legend, <i>See NM 1729(P)/12</i> , centred on:	1° 13'·15N., 103° 43'·50E. 1° 11'·69N., 103° 44'·78E. 1° 09'·81N., 103° 43'·00E.

Chart 4040 [*previous update 2595/12*] WGS84 DATUM

Amend	legend to, THIS CHART SHOWS CHANGES TO ANCHORAGES AND FAIRWAYS WHICH CAME INTO EFFECT 0000 HOURS UT, 1 ST JUNE 2012	outside N border
Delete	legend, <i>See NM 1729(P)/12</i> , centred on:	1° 14'·05N., 103° 38'·11E. 1° 13'·27N., 103° 43'·88E. 1° 15'·65N., 103° 46'·44E. 1° 11'·43N., 103° 44'·98E. 1° 09'·81N., 103° 43'·03E.

V
**EXTRACT OF ADMIRALTY NOTICES TO MARINERS
 FOR DUAL BADGED CHARTS**

2951* SINGAPORE – Sultan Shoal to Changi East – Legends. (continued)

Chart 4041 [*previous update 2595/12*] WGS84 DATUM

Amend	legend to, THIS CHART SHOWS CHANGES TO ANCHORAGES AND FAIRWAYS WHICH CAME INTO EFFECT 0000 HOURS UT, 1 ST JUNE 2012	outside N border
Delete	legend, <i>See NM 1729(P)/12</i> , centred on:	1° 14'·95N., 103° 47'·44E. 1° 17'·11N., 103° 53'·74E. 1° 17'·18N., 103° 55'·90E. 1° 17'·95N., 103° 59'·61E.

Updated to Admiralty Notices to Mariners Edition No. 30 of 2012 dated 26th July 2012.

MPA ENC DISTRIBUTORS

CONTACT PERSON/ DESIGNATION	ADDRESS	TELEPHONE/FAX NO./EMAIL/WEBSITE
ChartWorld GmbH ChartWorld Asia Pacific Pte Ltd.	Ruhrstrasse 90, 22761 Hamburg, Germany Frontech Centre 07-01, 15 Jalan Kilang Barat, Singapore 159357	Tel. No.: +49 40 853 58 6942 Fax No.: +49 40 853 58 6949 Email: sales@chartworld.com Tel No.: +65 65133500 Website : http://www.chartworld.com
DPM (Singapore) Pte Ltd	1 Maritime Square, #09-72 HarbourFront Centre, Singapore 099253	Tel. No.: +65 6270 4060 Fax No.: +65 6276 3858 Email: sales@dpmsingapore.com.sg Website: http://www.dpmsingapore.com.sg
Maritime Information Systems (MARIS) Maritime Information Systems AS (MARIS)	52, Telok Blangah Road #01-06, Telok Blangah House, Singapore 058809 Danholmen 25, 3128 Notteroy, Norway	Tel. No.: +65 6276 1472 Fax No.: +65 6276 1473 Email: : support@maris.sg Website: http://www.maris.no Tel. No.: +47 33 30 42 50 Fax No.: +47 33 30 42 51 Email: : sales@maris.no Website: http://www.maris.no
Motion Smith	15 Jalan Kilang Barat #08-01/05 Frontech Centre, Singapore 159357	Tel. No.: +65 6220 5098 Fax No.: +65 6225 4902 Email: sales@motsmith.com Website: http://www.motsmith.com
Transas Marine Pacific Pte Ltd	Cyber Centre 16 & 18 Jalan Kilang Barat Singapore 159358	Tel. No.: +65 6271 0200 Fax No.: +65 6271 7300 Email: dominic@transas.com.sg Website: http://www.transas.com.sg
Vector Services Pte Ltd	196 Pandan Loop, #06-29 Pantech Business Hub Singapore 128384	Tel. No.: +65 6777 3602 Fax No.: +65 6777 9203 Email: kwchoy@pacific.net.sg
Japan Hydrographic Association Electronic Charts Division	Daiichi Sogo Bldg, 6F 1-6-6, Hanedakuko, Ota-ku Tokyo 144-0041, Japan	Tel. No.: +81 3 5708 7093 Fax No.: +81 3 5708 7094 Email: shimizu-6kj@jha.jp Website: http://www.jha.or.jp/en/jha/
Jeppesen Norway AS	P.O Box 212 , N-4371 Egersund, Norway	Tel No.: +47 51 46 4700 Fax No: +47 51 46 4701 Email: license.marine@jeppesen.com Website : http://www.jeppesen.com/marine
PRIMAR STAVANGER	Lervigsveien 36, P.O Box 60, N-4001 Stavanger, Norway	Tel. No.: +47 51 93 9500 Fax No.: +47 51 93 9501 Email: sales@ecc.no Website : http://www.primar.no
The United Kingdom Hydrographic Office	Admiralty Way, Taunton, Somerset, TA1 2DN United Kingdom	Tel. No.: +44 1823 33 7900 Fax No.: +44 1823 28 4077 Emails: ENC.SalesReports@ukho.gov.uk Website: http://www.ukho.gov.uk

Chart Agents for the Maritime and Port Authority of Singapore
Nautical Charts and Publications

Please approach any of the appointed chart agent to purchase the Singapore Nautical Charts and Publications.

CHART AGENT	ADDRESS	TELEPHONE/FAX NO./EMAIL/WEBSITE
DPM (Singapore) Pte Ltd	1 Maritime Square, #09-72 HarbourFront Centre, Singapore 099253	Tel. No.: +65 6270 4060 Fax No.: +65 6276 3858 Email: sales@dpmsingapore.com.sg Website: http://www.dpmsingapore.com.sg
E.W. Liner Charts & Publications Pte Ltd	102F, Pasir Panjang Road, #08-01, Citilink Warehouse Complex, Singapore 118530	Tel. No.: +65 6323 0773 Fax No.: +65 6323 0775 Email: ewliner@singnet.com.sg Website: http://www.ewliner.com
Motion Smith	15 Jalan Kilang Barat #08-01/05 Frontech Centre Singapore 159357	Tel. No.: +65 6220 5098 (After office hours:+65 8163 9993) Fax No.: +65 6225 4902 Email: sales@motsmith.com Website: http://www.motsmith.com

HYDROGRAPHIC NOTE - Instructions

1. Mariners are requested to notify the Chief Hydrographer, Maritime and Port Authority of Singapore, when new or suspected dangers to navigation are discovered, changes are observed in aids to navigation or where corrections to nautical publications may be necessary. Reports, which cannot be confirmed or are lacking in certain details should not be withheld.
2. Any ambiguities of time, positioning and depth should be stressed and any firm expectation of being able to check the information provided on a following voyage should be mentioned.
3. Mariners using satellite position fixing systems, eg. GPS, should provide details of equipment and datum used (where applicable). Where bearings (true or magnetic) are taken visually or by radar to fix a position, it should include more than two objects in order to provide a check on its accuracy. A position may also be defined by bearing and distance from a conspicuous object eg. beacon, lighthouse etc.
4. The note should include a tracing or a digital image of the chart used and the details should be clearly marked.
5. Echo sounders frequently register greater depths than the advertised maximum depth for the equipment, eg. a trace appearing at 50 metres may be in fact be 550 metres or even 1050 metres for equipment whose maximum depth is 500 metres. Erroneous depths caused by 2nd transmission error can usually be recognised by the following:
 - (a) the tracing being weaker than normal for the depth registered,
 - (b) the trace appearing to pass through the transmission line,
 - (c) the feathery nature of the trace.
6. Upon receipt of a hydrographic note, a Notice to Mariners may be issued. The sender's vessel or name is quoted as the source unless the same information is also received in foreign Notices to Mariners.
7. Reports of shoals, uncharted dangers and defects in aids to navigation may also be made to the appropriate Singapore Port Operations Control Centre on VHF Channels 10, 12, 14, 68 or 73.

HYDROGRAPHIC NOTE

To:

Chief Hydrographer
Maritime and Port Authority of Singapore
460 Alexandra Road PSA Building #20-00
Singapore 119963

Tel : (65) 6375 1227
Fax : (65) 6278 7646
Email : hydrographic@mpa.gov.sg

Sender's Contact Details :

Date :

Name of Vessel :

Address of Sender :

Tel : Fax :

Email :

Nature of Observation :

General Location :

Subject :

Position : Lat. Long.

Charts Used :

Date & Time of Observation :

Details :

.....

.....

Attachment :

Equipment Used :

Type of Position Fixing : GPS / DGPS Others :

Type of Echo Sounder :

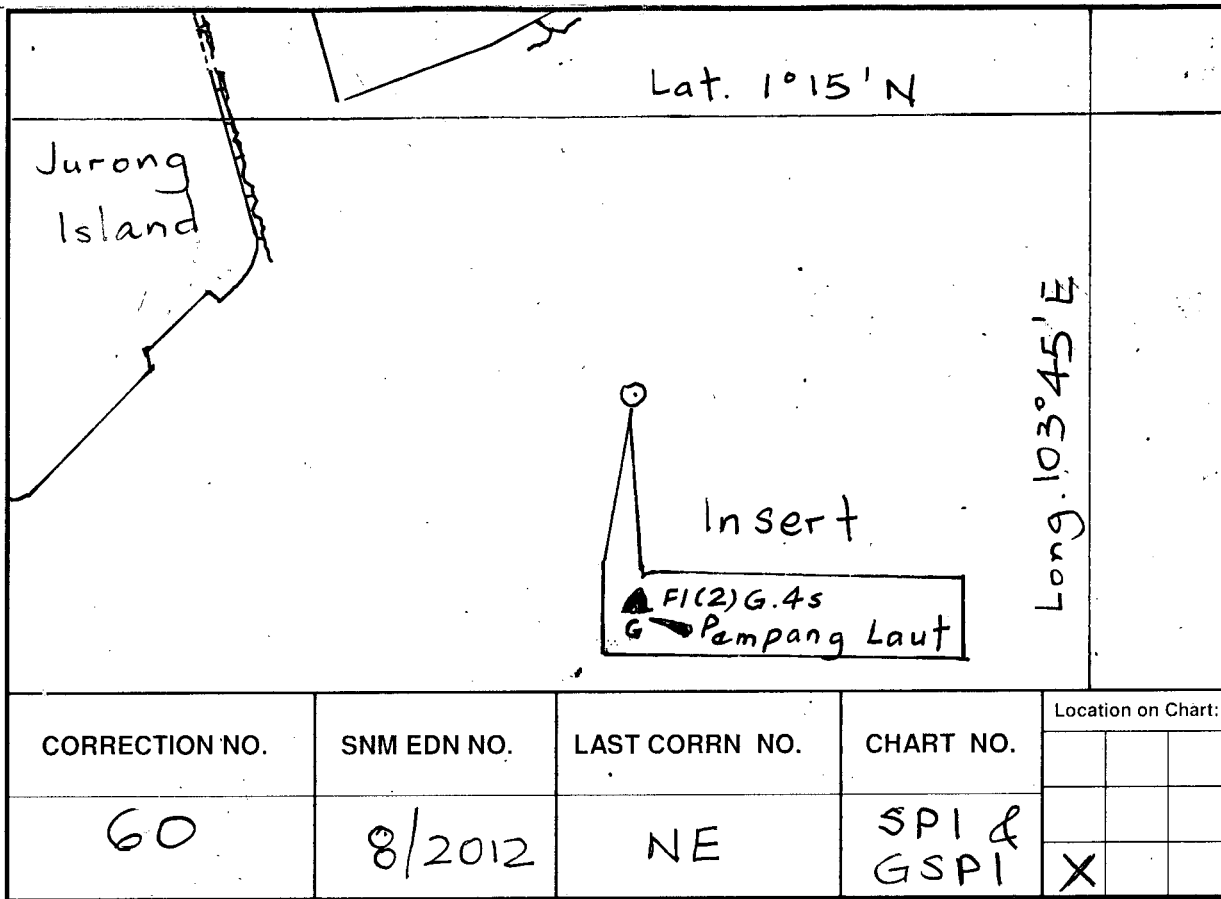
Name and Signature :

Ship's/Company's Stamp :

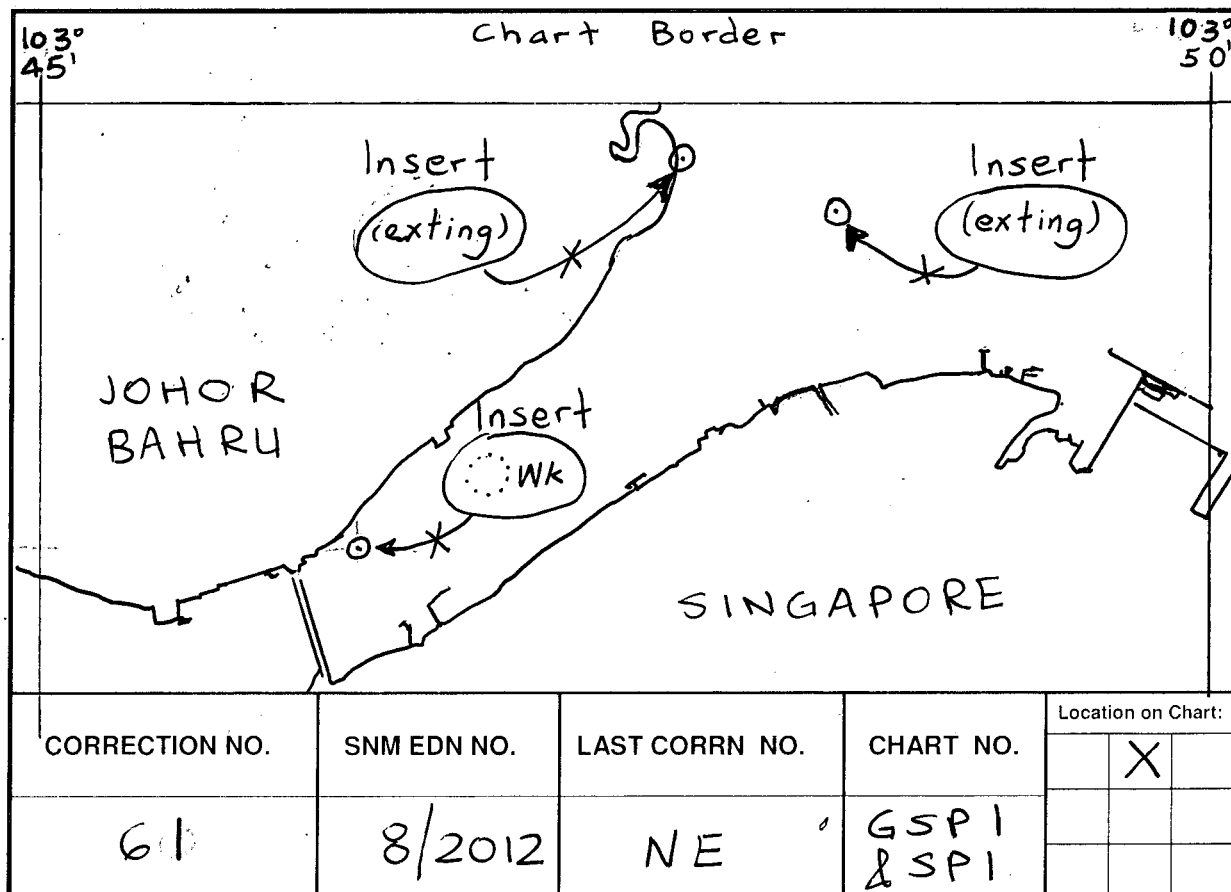
Attached Singapore Notices to Mariners Tracings

Attached Singapore Notices to Mariners Tracings

Singapore Notices to Mariners Tracings

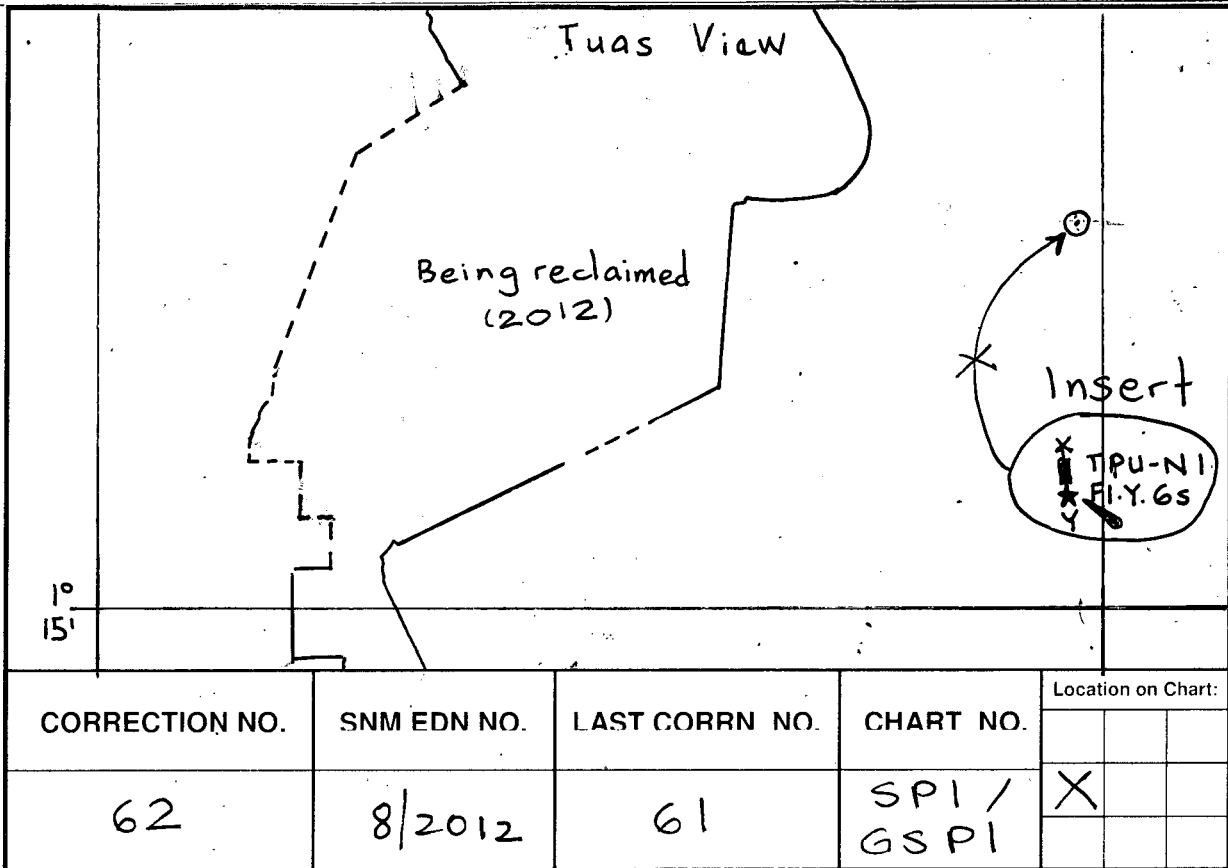


Caution: some computer printers might distort the tracings. Users are advised to check and, if necessary, adjust settings on their printer.

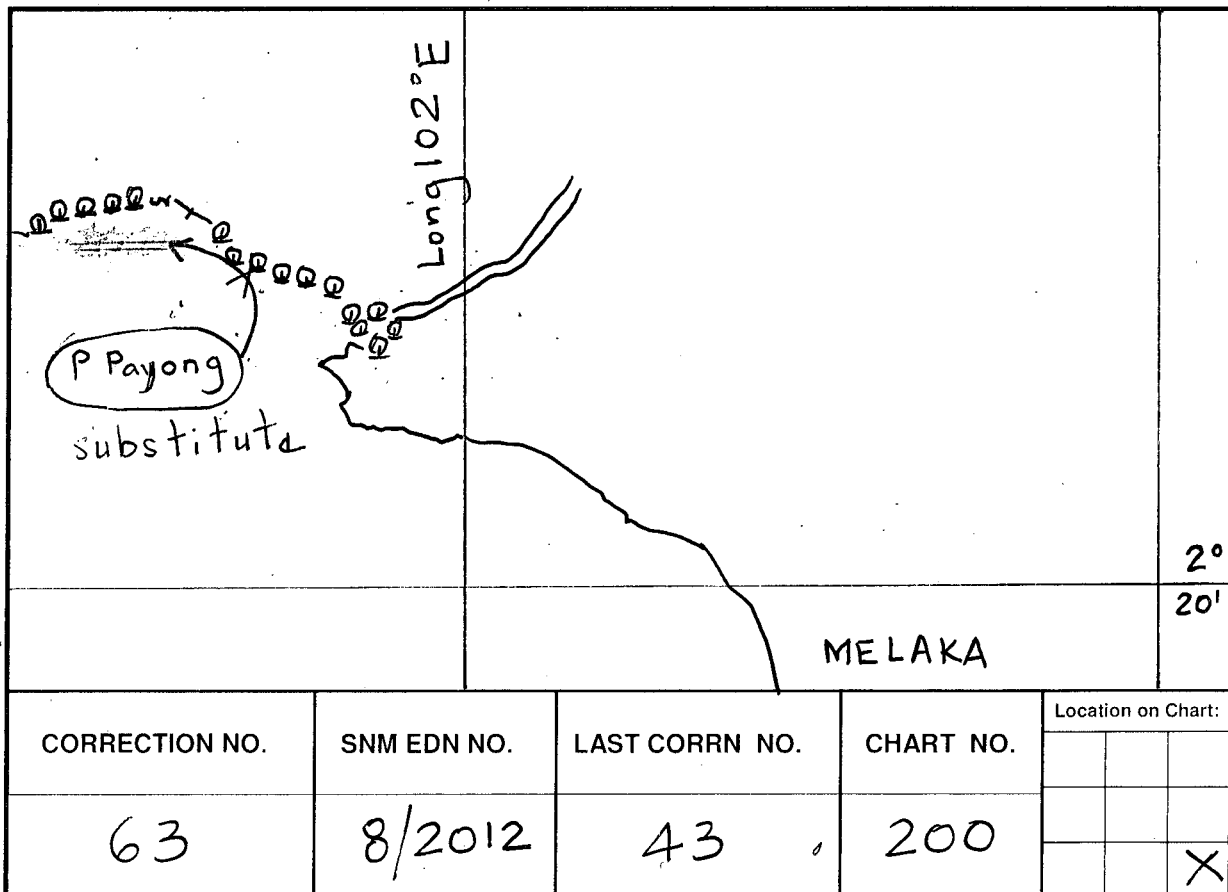


Caution: some computer printers might distort the tracings. Users are advised to check and, if necessary, adjust settings on their printer.

Singapore Notices to Mariners Tracings

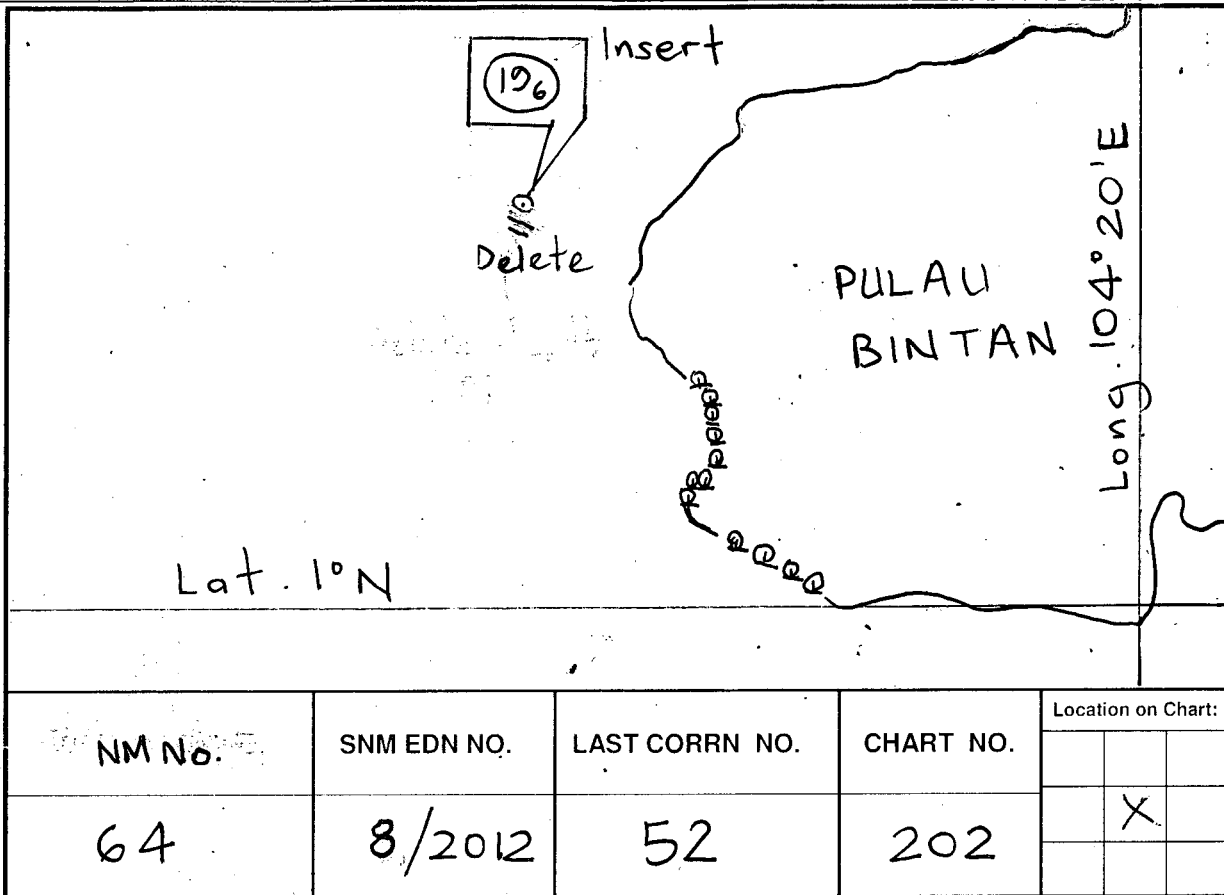


Caution: some computer printers might distort the tracings. Users are advised to check and, if necessary, adjust settings on their printer.

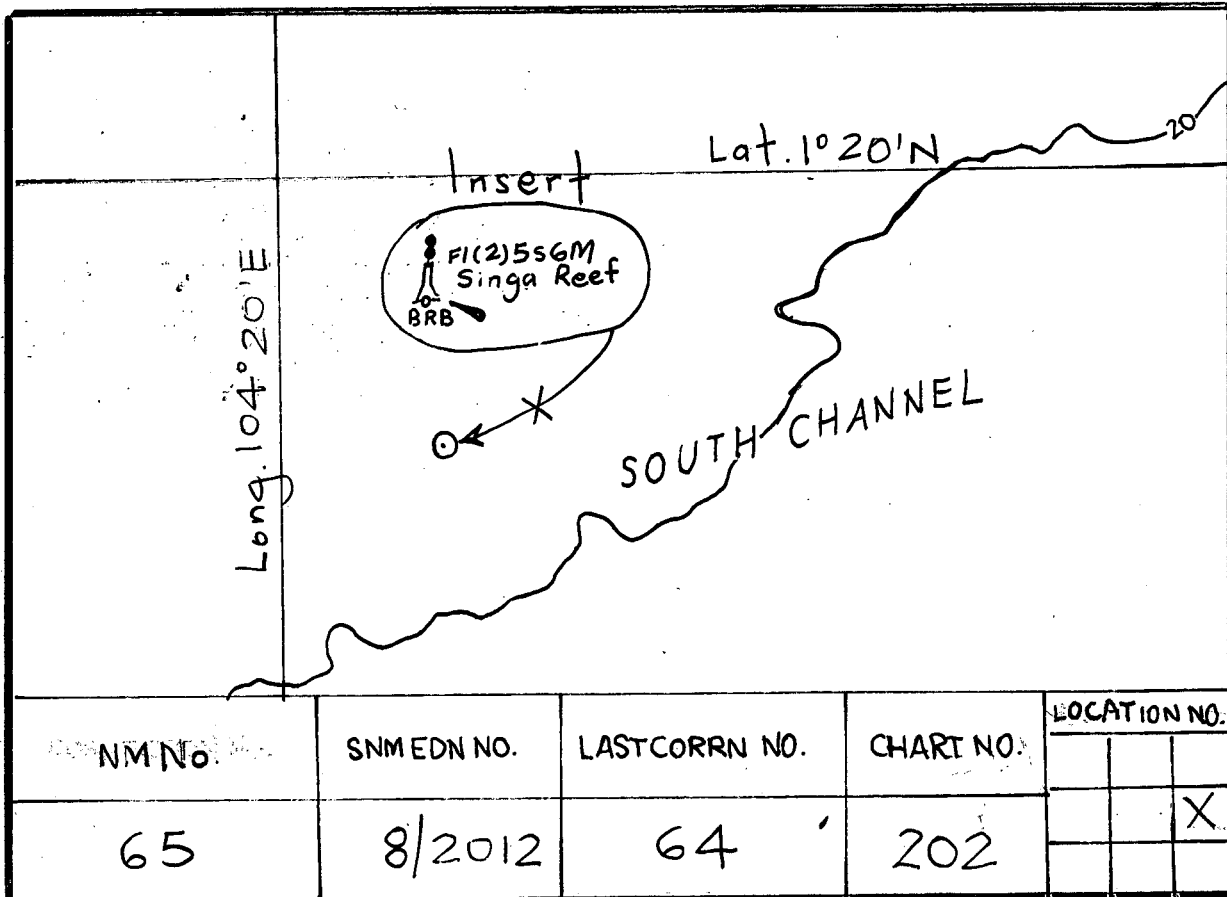


Caution: some computer printers might distort the tracings. Users are advised to check and, if necessary, adjust settings on their printer.

Singapore Notices to Mariners Tracings



Caution: some computer printers might distort the tracings. Users are advised to check and, if necessary, adjust settings on their printer.



Singapore Notices to Mariners Tracings

NM No.	SNM EDN No.	Last NM No.	CHART No.	Location on Chart:
66	8/2012	65	503	X

CHART BORDER

P U L A U B I N T A N
(I N D O N E S I A)

delete

15' CHART BORDER

NM No.	SNM EDN No.	Last NM No.	CHART No.	Location on Chart:
65	8/2012	113	503	X

Long. 104° 20' E

Lat. 1° 15' N

104° 25' E

Insert

F1(2)5s6M
Singa Reef
BRB

S O

Caution: some computer printers might distort the tracings, Users are advised to check and, if necessary adjust settings on their printer.