



## SINGAPOREAN NOTICES TO MARINERS

---

SECTION	CONTENT	Page
I	Index of Charts & Publications	1
II	New Publications	9
	Notices to Mariners and Chart Corrections	14
	Temporary and Preliminary Notices	16
III	Navigational Information	17
	Amendments to Publications	18
IV	Reprint of Radio Navigational Warnings	20
V	Extract of Admiralty Notices to Mariners for Dual-Badged Charts	21

---

**The monthly Notices to Mariners contain corrective information affecting charts published by the Hydrographic Department, Maritime and Port Authority of Singapore. The information contained in these Notices should be updated on the charts affected. Notices under Section II apply only to the particular Singaporean Chart(s) indicated.**

---

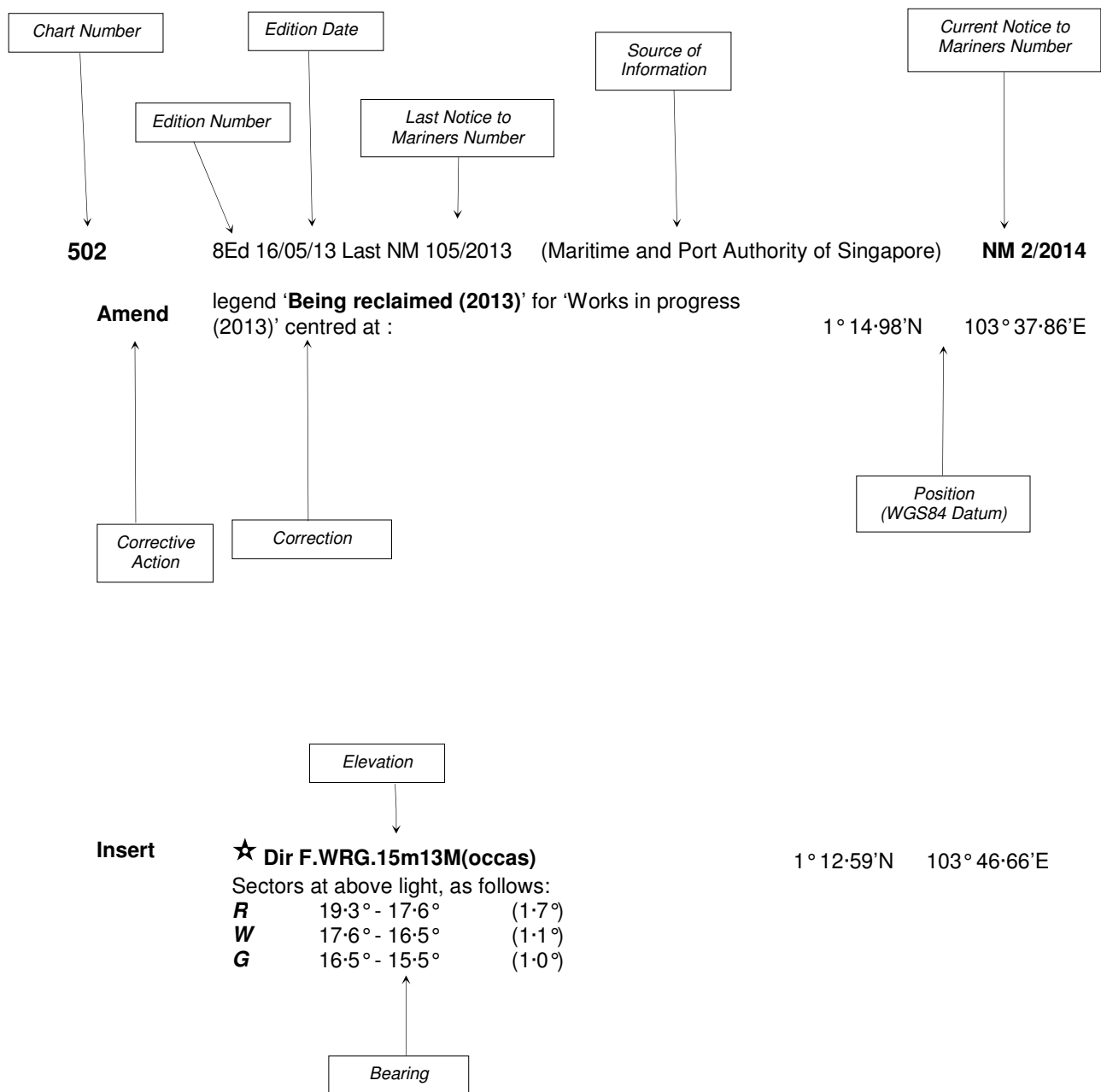
Mariners are requested to notify the Chief Hydrographer, Maritime and Port Authority of Singapore, immediately on the discovery of new dangers or suspected dangers to navigation and of changes or defects in aids to navigation. See Hydrographic Note on back page.

The monthly Singaporean Notices to Mariners can be accessed directly from the MPA website:  
[http://www.mpa.gov.sg/sites/port\\_and\\_shipping/circulars\\_and\\_notices/singapore\\_notices\\_to\\_mariners\(ntm\).page](http://www.mpa.gov.sg/sites/port_and_shipping/circulars_and_notices/singapore_notices_to_mariners(ntm).page)

Hydrographic Department  
Maritime and Port Authority of Singapore  
460 Alexandra Road  
#20-00 PSA Building  
Singapore 119963  
Tel: (65) 6375 1227  
Fax: (65) 6278 7646  
Email: [hydrographic@mpa.gov.sg](mailto:hydrographic@mpa.gov.sg)

## EXPLANATION OF FORMAT

The elements of a typical chart correction are explained below.



### Notes:

- a) Notice to Mariners number followed by:
  - T** indicates a Temporary Notice (eg. **NM 3T/2014**).
  - P** indicates a Preliminary Notice (eg. **NM 4P/2014**).
- b) Bearings are true reckoned clockwise from 000° to 359°; those relating to lights are from seaward.
- c) Heights and elevations are above Mean High Water Springs.

I  
**INDEX OF CHARTS AND PUBLICATIONS**

**INDEX OF AFFECTED CHARTS**

DESCRIPTION	NOTICE NO.	PAGE NO.
Index of Singaporean Charts	-	3, 4
Index of Dual-Badged Charts	-	5 to 7
Index of Singapore Electronic Navigational Chart (ENC)	-	8
New Edition Dual-Badged Charts	-	9, 10, 12
New Edition Singaporean Charts	-	11
New Release Electronic Navigational Charts	-	13
Singaporean Chart GSP1/SP1	60	14
Singaporean Chart 200	61	14
Singaporean Chart 202	62, 63	14
Singaporean Chart 500	63	15
Singaporean Chart 501	63	15
Singaporean Chart 502	62, 64	15
Temporary and Preliminary Notices	*65T, 66T	16
Singapore Port Marine Notices	*67	17
Singaporean Print-On-Demand (POD) Charts	*68	17
Amendments to Publications	*69	18, 19
Reprint of Radio Navigational Warnings	-	20
Extract of Admiralty Notices to Mariners for Dual-Badged Charts	-	21 to 23
Singapore Electronic Navigational Chart (ENC) Distributors	-	24
Chart Agents for the Maritime and Port Authority of Singapore Nautical Charts and Publications	-	25

\*Source: Maritime and Port Authority of Singapore

I  
**INDEX OF CHARTS AND PUBLICATIONS**

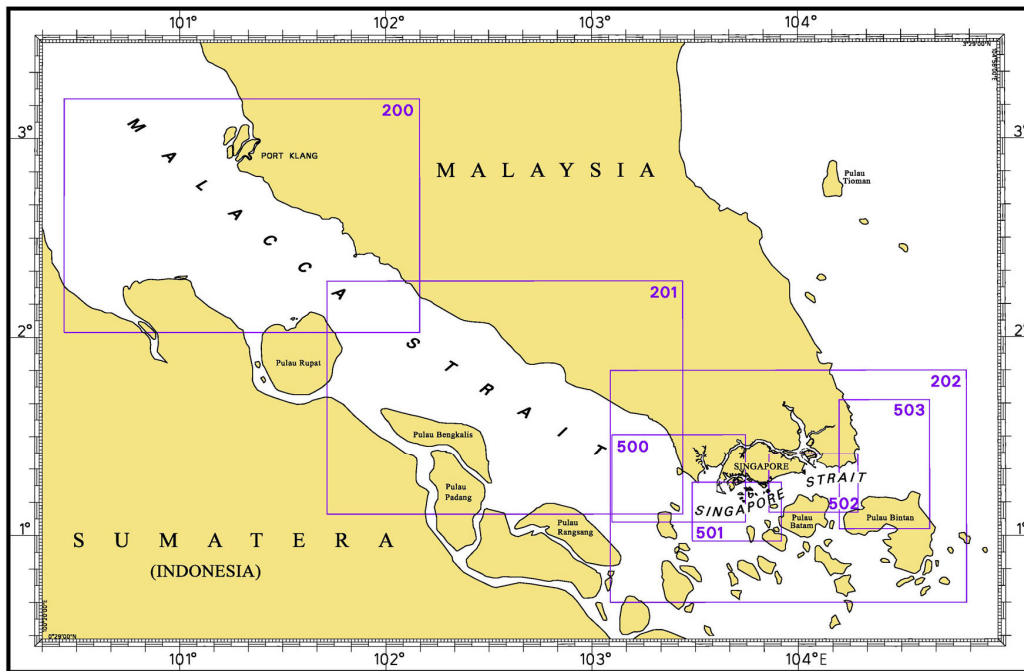
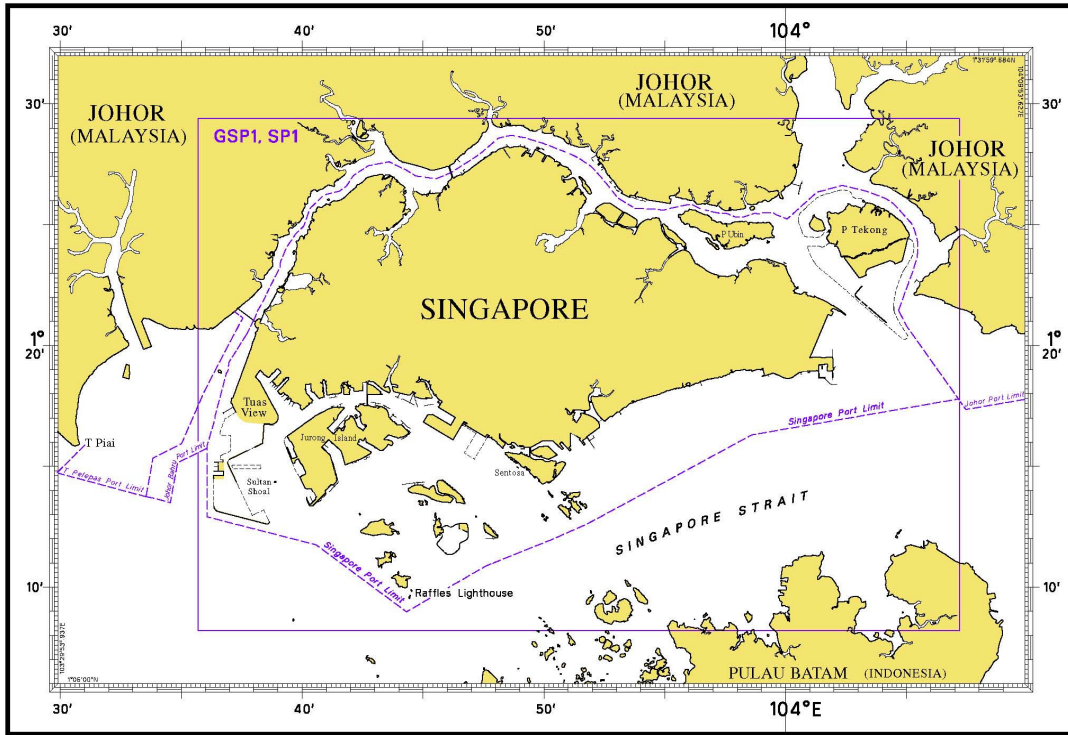
**INDEX OF NOTICES**

NOTICE NO.	DESCRIPTION	PAGE NO.
-	Index of Singaporean Charts	3, 4
-	Index of Dual-Badged Charts	5 to 7
-	Index of Singapore Electronic Navigational Chart (ENC)	8
-	New Edition Dual-Badged Charts	9, 10, 12
-	New Edition Singaporean Charts	11
-	New Release Electronic Navigational Charts	13
60	Singaporean Chart GSP1/SP1	14
61	Singaporean Chart 200	14
62, 63	Singaporean Chart 202	14
63	Singaporean Chart 500	15
63	Singaporean Chart 501	15
62, 64	Singaporean Chart 502	15
*65T, 66T	Temporary and Preliminary Notices	16
*67	Singapore Port Marine Notices	17
*68	Singaporean Print-On-Demand (POD) Charts	17
*69	Amendments to Publications	18, 19
-	Reprint of Radio Navigational Warnings	20
-	Extract of Admiralty Notices to Mariners for Dual-Badged Charts	21 to 23
-	Singapore Electronic Navigational Chart (ENC) Distributors	24
-	Chart Agents for the Maritime and Port Authority of Singapore Nautical Charts and Publications	25

\* Source: Maritime and Port Authority of Singapore

# I INDEX OF CHARTS AND PUBLICATIONS

## INDEX OF SINGAPOREAN CHARTS



Notes:  
Updated Singaporean Charts are available through our Print-On-Demand (POD) Chart Service. For more information, refer to Section III – Navigational Information. These charts can be purchased from our authorised Chart Agents.

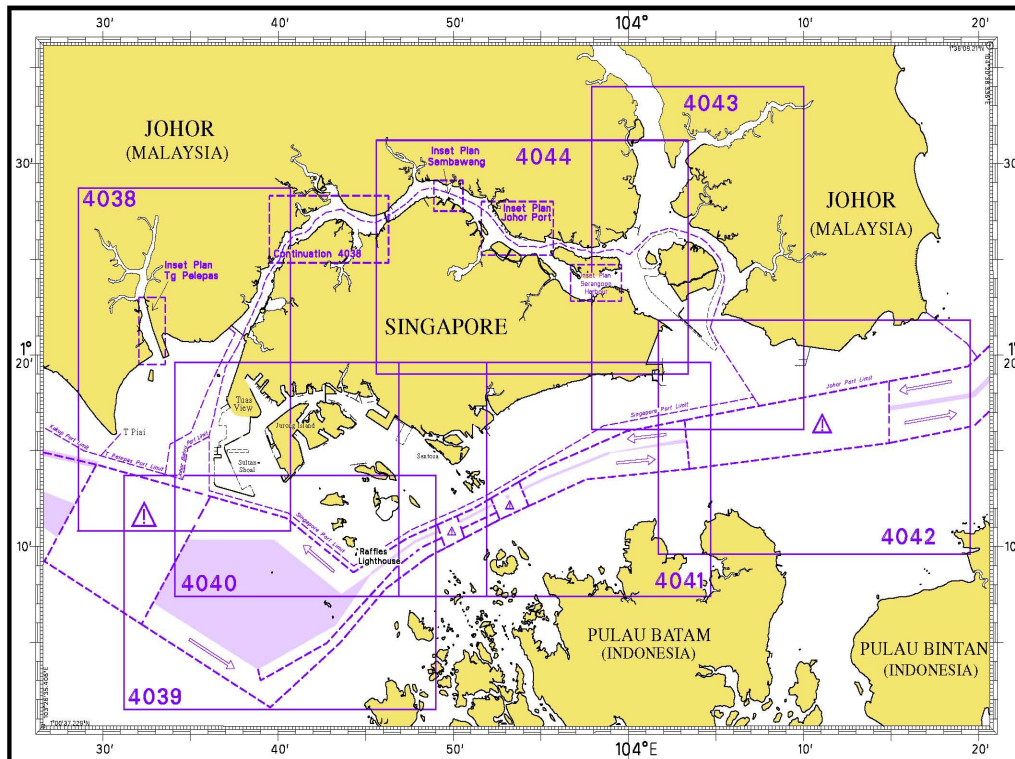
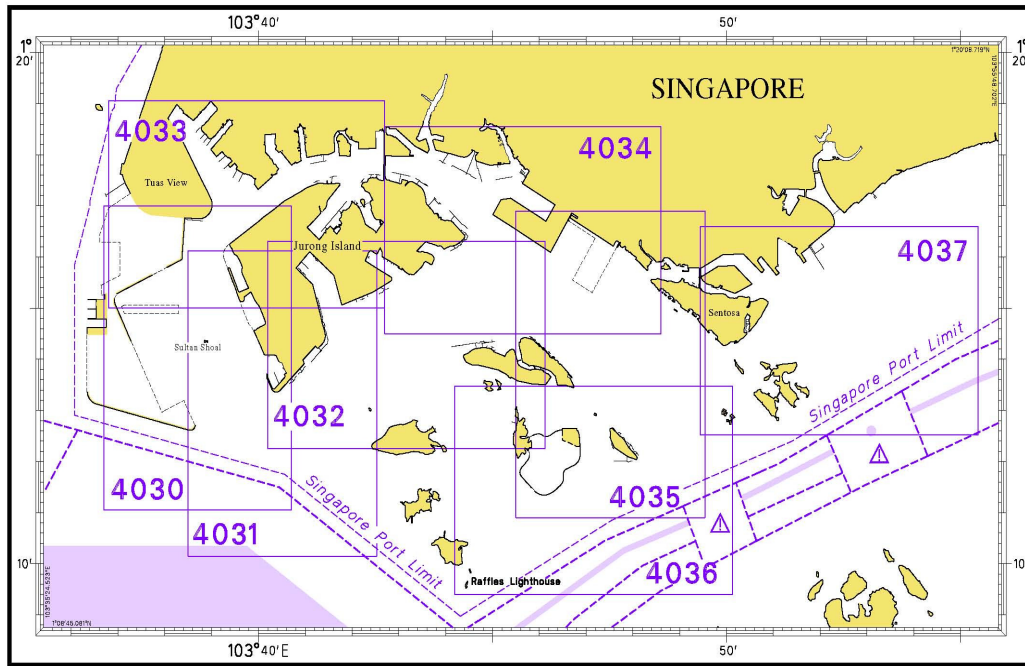
I  
INDEX OF CHARTS AND PUBLICATIONS

SINGAPOREAN CHARTS

Chart No.	Chart Title	Scale 1:	Date Published of Latest Edition
GSP1	Anchorage and Aids to Navigation (with Area Reference)	60 000	15/04/2014
SP1	Anchorage and Aids to Navigation	60 000	15/04/2014
200	Malacca Strait - Port Klang to Tanjung Keling	200 000	22/09/2011
201	Malacca Strait - Tanjung Keling to Western Entrance of Singapore Strait	200 000	07/10/2010
202	Singapore Strait	200 000	26/09/2013
500	Malacca and Singapore Straits – Pulau Pisang to Raffles Lighthouse	75 000	26/09/2013
501	Singapore Strait – Western Part	50 000	03/05/2012
502	Singapore Strait - Eastern Part	50 000	03/05/2012
503	South China Sea - Eastern Approaches and Entrance to Singapore Strait	75 000	01/04/2010
-	Charts for Small Craft – Singapore Strait & Adjacent Waterways	10 000 to 200 000	02/01/2014
-	Symbols Abbreviations Terms and S-57 Objects used on Singapore Nautical and Electronic Navigational Charts.  Available at MPA website <a href="http://www.mpa.gov.sg/sites/global_navigation/publications/chart1.page">http://www.mpa.gov.sg/sites/global_navigation/publications/chart1.page</a>	-	28/07/2011

# I INDEX OF CHARTS AND PUBLICATIONS

## INDEX OF DUAL-BADGED CHARTS



I  
**INDEX OF CHARTS AND PUBLICATIONS**

**DUAL- BADGED CHARTS**

<b>Chart No.</b>	<b>Chart Title</b>	<b>Scale 1:</b>	<b>Date Published of Latest Edition</b>
4030	Port of Singapore West Jurong Anchorages and Temasek Fairway	10 000	15/05/2014
4031	Port of Singapore Western Approaches to Jurong Island	10 000	15/05/2014
4032	Port of Singapore Sinki Fairway	10 000	15/05/2014
4033	Port of Singapore Tuas Bay, West Jurong Channel and Pesek Basin	10 000	15/05/2014
4034	Port of Singapore East Jurong Channel, Pasir Panjang Terminal and West Keppel Fairway	10 000	11/04/2013
4035	Port of Singapore Western Anchorages, Jong Fairway and Cruise Bay	10 000	26/09/2013
4036	Port of Singapore Raffles Lighthouse to The Sisters	10 000	25/04/2013
4037	Port of Singapore Keppel Harbour, Tanjong Pagar Terminal and Approaches	10 000	25/04/2013
4038	Malaysia and Singapore Johor Strait – Western Part	30 000	26/09/2013
4039	Indonesia, Singapore and Malaysia Western Approaches to Main Strait	30 000	24/04/2014
4040	Singapore, Indonesia and Malaysia Tuas View to Pulau Sakijang Bendera (S. John's Island)	30 000	09/05/2013
4041	Singapore and Indonesia Pulau Sebarok to Changi	30 000	09/05/2013

I  
**INDEX OF CHARTS AND PUBLICATIONS**

**DUAL- BADGED CHARTS**

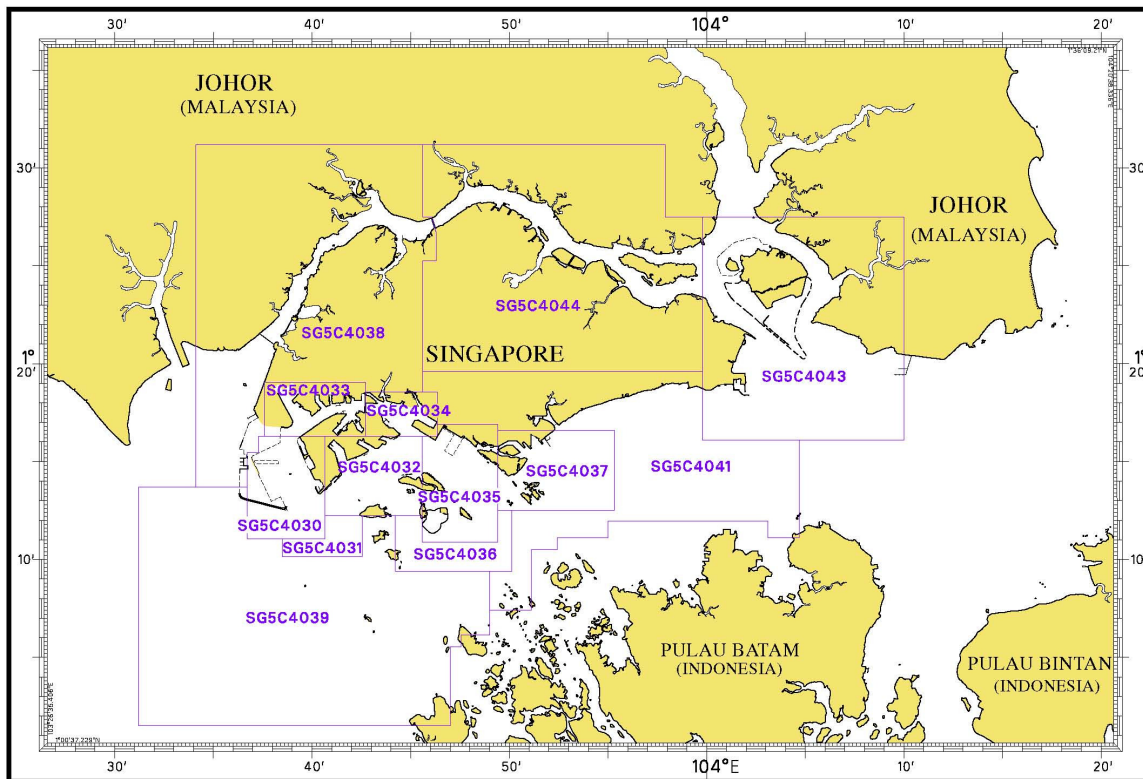
<b>Chart No.</b>	<b>Chart Title</b>	<b>Scale 1:</b>	<b>Date Published of Latest Edition</b>
4042	Indonesia, Malaysia and Singapore Changi to Pulau Mungging and Tanjung Buntan to Tanjung Tondang	30 000	24/04/2014
4043	Malaysia and Singapore Kuala Johor and Sungai Johor	30 000	29/08/2013
4044	Singapore and Malaysia Johor Strait - Eastern Part	30 000	29/08/2013

**SINGAPOREAN PUBLICATIONS**

<b>Item</b>	<b>Title</b>
1	Singapore Tide Tables Year 2014
2	Singapore Port Information 2014/2015

# I INDEX OF CHARTS AND PUBLICATIONS

## INDEX OF SINGAPORE ELECTRONIC NAVIGATIONAL CHART (ENC)



### SINGAPORE ELECTRONIC NAVIGATIONAL CHART (ENC)

ENC Name	ENC Coverage	ENC Edition
SG5C4030	West Jurong Anchorages and Temasek Fairway	6 <sup>th</sup> Edition (15/05/2014)
SG5C4031	Western Approaches to Jurong Island	6 <sup>th</sup> Edition (15/05/2014)
SG5C4032	Sinki Fairway	8 <sup>th</sup> Edition (15/05/2014)
SG5C4033	Tuas Bay, West Jurong Channel and Pesek Basin	6 <sup>th</sup> Edition (15/05/2014)
SG5C4034	East Jurong Channel, Pasir Panjang Terminal and West Keppel Fairway	11 <sup>th</sup> Edition (11/04/2013)
SG5C4035	Western Anchorages, Jong Fairway and Cruise Bay	14 <sup>th</sup> Edition (26/09/2013)
SG5C4036	Raffles Lighthouse to The Sisters	6 <sup>th</sup> Edition (3/05/2012)
SG5C4037	Keppel Harbour, Tanjong Pagar Terminal and Approaches	7 <sup>th</sup> Edition (25/04/2013)
SG5C4038	Johor Strait – Western Part	6 <sup>th</sup> Edition (26/09/2013)
SG5C4039	Western Approaches to Main Strait	6 <sup>th</sup> Edition (24/04/2014)
SG5C4041	Pulau Sebarok to Changi	7 <sup>th</sup> Edition (9/05/2013)
SG5C4043	Kuala Johor	9 <sup>th</sup> Edition (29/08/2013)
SG5C4044	Johor Strait – Eastern Part	9 <sup>th</sup> Edition (29/08/2013)

## II NEW PUBLICATIONS

### NEW EDITION DUAL- BADGED CHARTS TO BE PUBLISHED ON 14<sup>TH</sup> AUGUST 2014

**Chart Number** : 4040  
**Title** : Singapore, Indonesia and Malaysia  
 Tuas View to Pulau Sakijang Bendera  
 (S. John's Island)  
**Coverage** : Lat 01° 07'·40 N 01° 19'·60 N  
 Long 103° 34'·10 E 103° 51'·90 E  
**Scale** : 1: 30 000  
**Date Published** : 14<sup>th</sup> August 2014  
**Size of Chart** : 1100·6 x 749·5 mm  
**Descriptions** : This new edition includes changes to depths and topographic details from the latest surveys covering west of Tuas Reclamation, Jurong Anchorages, Temasek Fairway, West Jurong Channel, Pesek Basin, Banyan Basin, Sinki Fairway, East Jurong Channel, West Keppel Fairway, Shell SBM Area, Monggok Sebarok and East Keppel Fairway.

The existing chart of the same number published on 9<sup>th</sup> May 2013 will be superseded.

**Chart Number** : 4041  
**Title** : Singapore and Indonesia  
 Pulau Sebarok to Changi  
**Coverage** : Lat 01° 07'·40 N 01° 19'·60 N  
 Long 103° 46'·90 E 104° 04'·70 E  
**Scale** : 1: 30 000  
**Date Published** : 14<sup>th</sup> August 2014  
**Size of Chart** : 1100·6 x 749·5 mm  
**Descriptions** : This new edition includes changes to depths and topographic details from the latest surveys covering Eastern Cable Corridor, approaches to Marina South, approaches to East Keppel Fairway, Keppel Harbour, S. John Dumping Ground, west of Sentosa, West Keppel Fairway and Shell SBM.

The existing chart of the same number published on 9<sup>th</sup> May 2013 will be superseded.

## II NEW PUBLICATIONS

### NEW EDITION DUAL- BADGED CHARTS TO BE PUBLISHED ON 14<sup>TH</sup> AUGUST 2014

**Chart Number** : 4043  
**Title** : Malaysia and Singapore  
 Kuala Johor and Sungai Johor  
**Coverage** : Lat 01° 16' 10 N 01° 34' 00 N  
 Long 103° 57' 90 E 104° 10' 00 E  
**Scale** : 1: 30 000  
**Date Published** : 14<sup>th</sup> August 2014  
**Size of Chart** : 748·1 x 1099·6 mm  
**Descriptions** : This new edition includes changes to depths and topographic details from the latest surveys covering north of Pulau Ubin, around Pulau Tekong, Kuala Johor, Cable Corridor and Eastern Anchorages and Fairway.

The existing chart of the same number published on 29<sup>th</sup> August 2013 will be superseded.

---

**Chart Number** : 4044  
**Title** : Malaysia and Singapore  
 Johor Strait, Eastern Part  
**Coverage** : Lat 01° 19' 00 N 01° 31' 20 N  
 Long 103° 45' 60 E 104° 03' 40 E  
**Scale** : 1: 30 000  
**Date Published** : 14<sup>th</sup> August 2014  
**Size of Chart** : 1100·5 x 749·5 mm  
**Descriptions** : This new edition includes changes to depths and topographic details from the latest surveys covering Approaches to Sembawang Shipyard, north-west of Pulau Ubin, north of Pulau Tekong and Kuala Johor.

The existing chart of the same number published on 29<sup>th</sup> August 2013 will be superseded.

---

## II NEW PUBLICATIONS

### NEW EDITION SINGAPOREAN CHARTS TO BE PUBLISHED ON 15<sup>TH</sup> AUGUST 2014

**Chart Number** : 201  
**Title** : Malacca Strait  
 Tanjung Keling To Western Entrance Of Singapore Strait  
**Coverage** : Lat 01° 06' 43 N 02° 16' 99 N  
 Long 101° 42' 91 E 103° 26' 45 E  
**Scale** : 1: 200 000  
**Date Published** : 15<sup>th</sup> August 2014  
**Size of Chart** : 960·0 x 650·0 mm  
**Descriptions** : This new edition includes new submarine cables and updated bathymetry details.

The existing chart of the same number published on 7<sup>th</sup> October 2010 will be superseded.

---

**Chart Number** : 503  
**Title** : Eastern Approaches And Entrance To Singapore Strait  
**Coverage** : Lat 01° 02' 00 N 01° 41' 06 N  
 Long 104° 11' 89 E 104° 38' 17 E  
**Scale** : 1: 75 000  
**Date Published** : 15<sup>th</sup> August 2014  
**Size of Chart** : 649·9 x 960·0 mm  
**Descriptions** : This new edition includes new submarine cables and updated surveys around Pedra Branca.

The existing chart of the same number published on 1<sup>st</sup> April 2010 will be superseded.

---

## II NEW PUBLICATIONS

### NEW EDITION DUAL- BADGED CHARTS TO BE PUBLISHED ON 28<sup>TH</sup> AUGUST 2014

**Chart Number** : 4034  
**Title** : Port of Singapore  
 East Jurong Channel, Pasir Panjang Terminal and West Keppel Fairway  
**Coverage** : Lat 01° 14' 50 N 01° 18' 55 N  
 Long 103° 42' 70 E 103° 48' 60 E  
**Scale** : 1: 10 000  
**Date Published** : 28<sup>th</sup> August 2014  
**Size of Chart** : 1094.3 x 746.3 mm  
**Descriptions** : This new edition includes changes to depths and topographic details from the latest surveys covering Pasir Panjang Terminal, East Jurong Channel, West Keppel Fairway, Sinki Fairway, Selat Pandan and newly commissioned berths P31 to P33 at Pasir Panjang Terminal.

The existing chart of the same number published on 11<sup>th</sup> April 2013 will be superseded.

---

**Chart Number** : 4035  
**Title** : Port of Singapore  
 Western Anchorages, Jong Fairway and Cruise Bay  
**Coverage** : Lat 01° 10' 90 N 01° 16' 90 N  
 Long 103° 45' 50 E 103° 49' 54 E  
**Scale** : 1: 10 000  
**Date Published** : 28<sup>th</sup> August 2014  
**Size of Chart** : 749.4 x 1105.7 mm  
**Descriptions** : This new edition includes changes to depths and topographic details from the latest surveys covering Pasir Panjang Terminal, West Keppel Fairway, west of Sentosa, north of Pulau Bukom, west of Pulau Sebarok, Shell SBM, Terumbu Sebarok and newly commissioned berths P31 to P33 at Pasir Panjang Terminal.

The existing chart of the same number published on 26<sup>th</sup> September 2013 will be superseded.

---

## II NEW PUBLICATIONS

### RELEASE OF NEW EDITION SINGAPORE ELECTRONIC NAVIGATIONAL CHARTS (ENC) ON 1<sup>ST</sup> SEPTEMBER 2014

- 1 A new edition of the Singapore ENC covering Singapore waters and its approaches will be release on 1<sup>st</sup> September 2014. The new edition Singapore ENC will supersede the earlier edition cells.
- 2 The 13 ENC cells and their respective area of coverage are as follows:





Cellname	Coverage
SG5C4030	West Jurong Anchorages and Temasek Fairway
SG5C4031	Western Approaches to Jurong Island
SG5C4032	Sinki Fairway
SG5C4033	Tuas Bay, West Jurong Channel and Pesek Basin
SG5C4034	East Jurong Channel, Pasir Panjang Terminal and West Keppel Fairway
SG5C4035	Western Anchorages, Jong Fairway and Cruise Bay
SG5C4036	Raffles Lighthouse to The Sisters
SG5C4037	Keppel Harbour, Tanjong Pagar Terminal and Approaches
SG5C4038	Johor Strait – Western Part
SG5C4039	Western Approaches to Main Strait
SG5C4041	Pulau Sebarok to Changi
SG5C4043	Kuala Johor
SG5C4044	Johor Strait – Eastern Part



- 3 The new edition Singapore ENC can be purchased from any of our Appointed ENC Distributors:

[http://www.mpa.gov.sg/sites/port\\_and\\_shipping/port/charts\\_tidal\\_information\\_and\\_hydrography/charts/singapore\\_electronic\\_navigational\\_chart\(enc\).page](http://www.mpa.gov.sg/sites/port_and_shipping/port/charts_tidal_information_and_hydrography/charts/singapore_electronic_navigational_chart(enc).page)

Please refer Page 24 for list of MPA ENC Distributors.

**II**  
**NOTICES TO MARINERS AND CHART CORRECTIONS**

<b>GSP1/SP1</b>	9 Ed 15/4/14 Last NM 53/2014	(Maritime and Port Authority of Singapore)	<b>NM 60/2014</b>
<b>Move</b>	 <i>Fl.G.2s Jurong Satu</i> from:		1° 14·07'N 103° 39·90'E
		to:	1° 14·05'N 103° 39·99'E
	 <i>Fl.G.4s Jurong Dua</i> from:		1° 14·67'N 103° 39·61'E
	to:		1° 14·95'N 103° 39·55'E
	 <i>Q(9)15s Jurong Empat</i> from:		1° 15·93'N 103° 39·02'E
	to:		1° 15·88'N 103° 39·04'E
<b>Delete</b>	 <i>Fl.G.6s Jurong Tiga</i>		1° 15·40'N 103° 39·27'E

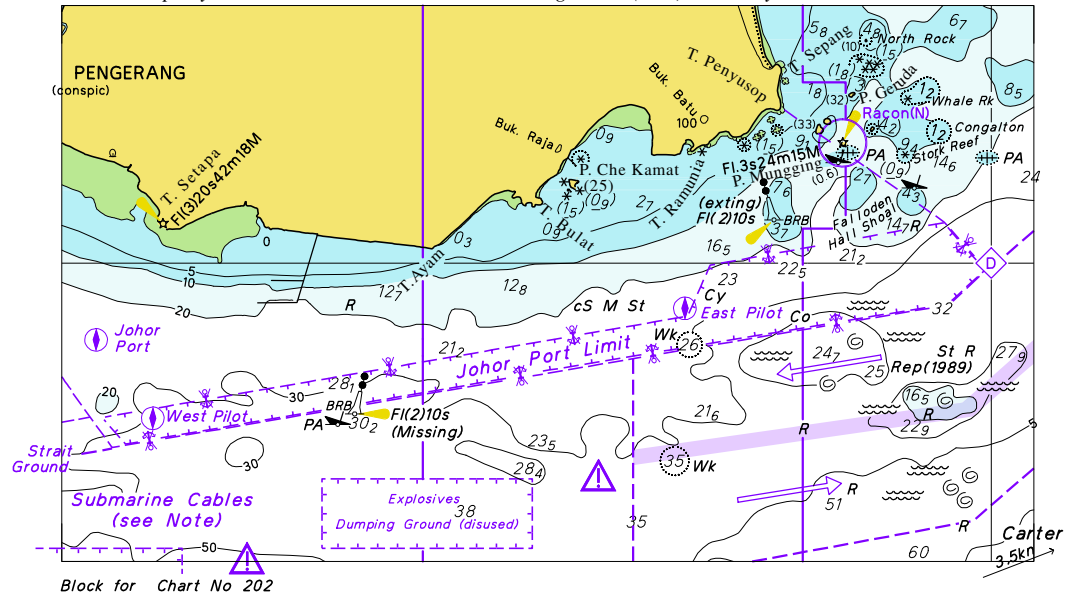
<b>200</b>	3 Ed 22/9/11 Last NM 45/2014	(Admiralty Notice No.28/2970/2014)	<b>NM 61/2014</b>
<b>Insert</b>	 <b>Fl.2s13m11M</b>		2° 02·58'N 101° 20·00'E
	 <b>Fl.3s13m11M</b>		2° 06·50'N 101° 16·67'E

<b>202</b>	7 Ed 26/09/13 Last NM 59/2014	(Admiralty Notice No. 27/2756/2014)	<b>NM 62/2014</b>
<b>Insert</b>	the accompanying block, showing jetty, and amendments to coastline, centred on:		1° 20·00'N 104° 10·50'E
		(Admiralty Notice No. 29/3046/2014)	<b>NM 63/2014</b>
<b>Insert</b>	limit of anchorage area, pecked line, joining:	(a)	1° 05·49'N 103° 40·84'E (existing limit)
		(b)	1° 05·01'N 103° 41·13'E (existing limit)
<b>Delete</b>	former limit of anchorage area, pecked line, joining:	(a)	above 1° 05·38'N 103° 40·63'E
			1° 04·90'N 103° 40·90'E
		(b)	above

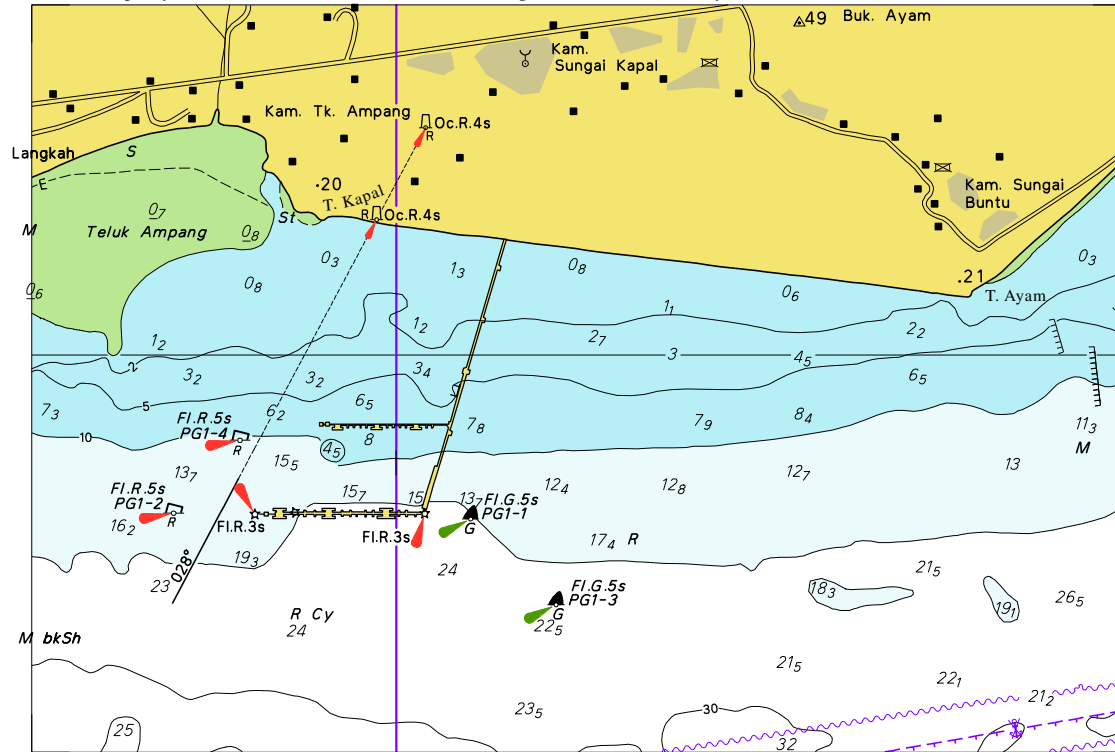
**II**  
**NOTICES TO MARINERS AND CHART CORRECTIONS**

<b>500</b>	7 Ed 26/09/13 Last NM 39/2014	(Admiralty Notice No. 29/3046/2014)	<b>NM 63/2014</b>
<b>Insert</b>	limit of anchorage area, pecked line, joining:	(a) 1° 05·49'N (existing limit)	103° 40·84'E
		(b) 1° 05·01'N (existing limit)	103° 41·13'E
<b>Delete</b>	former limit of anchorage area, pecked line, joining:	(a) above 1° 05·38'N	103° 40·63'E
		1° 04·90'N	103° 40·90'E
		(b) above	
<hr/>			
<b>501</b>	6 Ed 3/05/12 Last NM 39/2014	(Admiralty Notice No. 29/3046/2014)	<b>NM 63/2014</b>
<b>Insert</b>	limit of anchorage area, pecked line, joining:	(a) 1° 05·49'N (existing limit)	103° 40·84'E
		(b) 1° 05·01'N (existing limit)	103° 41·13'E
<b>Delete</b>	former limit of anchorage area, pecked line, joining:	(a) above 1° 05·38'N	103° 40·63'E
		1° 04·90'N	103° 40·90'E
		(b) above	
<hr/>			
<b>502</b>	6Ed 3/05/12 Last NM 40/2014	(Admiralty Notice No. 27/2756/2014)	<b>NM 62/2014</b>
<b>Insert</b>	the accompanying block, showing new buoyage, depths, jetty, lights and amendments to coastline, centred on:	1° 20·00'N	104° 10·50'E
<b>Insert</b>	① <b>West Pilot Boarding Ground</b>	1° 17·77'N	104° 08·04'E
	① <b>East Pilot Boarding Ground</b>	1° 19·35'N	104° 15·63'E
<b>Replace</b>	depth, 19 with depth, 18 <sub>3</sub>	1° 18·00'N	104° 07·39'E
<b>Delete</b>	working limit, pecked line, and associated legend, 'Works in progress (2012)', joining:	1° 20·57'N 1° 19·06'N 1° 17·86'N 1° 19·04'N 1° 21·36'N	104° 08·14'E 104° 07·48'E 104° 07·32'E 104° 14·06'E 104° 13·86'E
		(Royal Malaysian Navy Notice No. 6/89/2014)	<b>NM 64/2014</b>
<b>Insert</b>	legend ' <b>(Missing)</b> ' to isolated danger buoy at:	1° 17·67'N	104° 11·10'E

To accompany Notice to Mariners 62/14 Image Size (mm) 73.60 by 128.54



To accompany Notice to Mariners 62/14 Image Size (mm) 98.9 by 145.4



Block for Chart No 502

**II**  
**TEMPORARY AND PRELIMINARY NOTICES**

\*(NM 65T/2014)

**Semaphore Tower at Pulau Satumu – Raffles Lighthouse**

The day mark signal (an upright black cone over a black drum) and night mark signal (an isophase white 'X' every 10 sec) warning passing vessels of a VLCC crossing the Main Strait and bound for Shell Single Buoy Mooring (SBM) in position Latitude 1° 09.65' N Longitude 103° 44.47' E are out of service.

**Remark :** Vessels in the vicinity of Raffles Lighthouse are advised to navigate with caution.

**Charts affected :** GSP1/SP1, 202, 500, 501, 4036, 4039 and 4040.

**Publication affected:** Singapore Port Information 2014/2015.

<b>200</b>	3 Ed 22/9/11 Last NM 45/2014	(Royal Malaysian Navy Notice No. 6/90T/2014)	<b>NM 66T/2014</b>
<b>Delete</b>	★ FI.G.5s4m8M	2° 48·07'N	101° 24·10'E

\*Source: Maritime and Port Authority of Singapore

### III NAVIGATIONAL INFORMATION

**\*(NM 67/2014) SINGAPORE PORT MARINE NOTICES**

The Port Marine Notices shortlisted below would be of particular interest to mariners. Details and complete list of Port Marine Notices are available at this link:

[http://www.mpa.gov.sg/sites/port\\_and\\_shipping/circulars\\_and\\_notices/port\\_marine\\_notices.page](http://www.mpa.gov.sg/sites/port_and_shipping/circulars_and_notices/port_marine_notices.page)

PMN No.	Subject
90/2014	Reclamation at Pulau Tekong.
99/2014	Rock removal and sheet piling work of cofferdam for proposed construction of dock at Tuas new shipyard, Tuas View Extension (West).

**\*(NM 68/2014) SINGAPOREAN PRINT-ON-DEMAND (POD) CHARTS**

Print-On-Demand (POD) Charts are the most up-to-date paper nautical charts printed for navigational use. These nautical charts are produced in accordance with the International Hydrographic Organisation (IHO) chart specifications. These official nautical charts are continually updated to the latest Notices to Mariners before they are printed and sold to users.

These POD Charts include 200, 201, 202, 500, 501, 502 and 503.

**BENEFITS TO OUR CUSTOMERS**

**Convenience**

Customers need not make numerous hand corrections to the nautical charts before use. In addition the updated POD Charts are more accurate and reliable than offset printed charts with hand corrections.

**Clarity**

Clarity in the presentation of updated information as compared to lithographic printed charts, where in some cases there are several overlapping corrections over existing information.

**Coverage**

The POD Charts cover the Malacca and Singapore Straits, from One Fathom Bank to Horsburgh Lighthouse.

\*Source: Maritime and Port Authority of Singapore

### III AMENDMENTS TO PUBLICATIONS

\*(NM 69/2014) UPDATING OF PUBLICATION "SINGAPORE PORT INFORMATION 2014/2015"

#### DEPTHS OF NAVIGATIONAL CHANNELS AND FAIRWAYS

1. Page 109  
Amend the following:

LOCATIONS	DEPTHS (m)	REMARKS
Sisters Fairway (Selat Tanjong Hakim)	9.1	

2. Page 110  
Amend the following:

LOCATIONS	DEPTHS (m)	REMARKS
Approaches to VLCC berths in Sinki Fairway	22.9	

3. Page 134

#### CHARACTERISTICS OF AIDS TO NAVIGATION TEMASEK FAIRWAY

Amend the following:

Name of Beacon/Buoy	Position Lat.N Long.E Deg Min	Structure, colour & Shape	Light Characteristic	Owner
Jurong Satu Buoy	01° 14.046' 103° 39.986'	Green Conical	Fl.G.2s	MPA
Jurong Dua Buoy	01° 14.953' 103° 39.547'	Green Conical	Fl.G.4s	M/S Diap-Shap JV
Jurong Empat Buoy	01° 15.879' 103° 39.038'	Double black cones topmark point to point on yellow black yellow pillar	Q(9)W.15s	M/S Diap-Shap JV

Delete the following:

Name of Beacon/Buoy	Position Lat.N Long.E Deg Min	Structure, colour & Shape	Light Characteristic	Owner
Jurong Tiga Buoy	01° 15.395' 103° 39.269'	Green Conical	Fl.G.6s	M/S Diap-Shap JV

#### WHARVES AND BERTHS

4. Page 165 – Item 5

#### PASIR PANJANG TERMINAL (PSA SINGAPORE TERMINALS) (1° 17.2'N, 103° 46.1E)

Insert the following:

Berth	Length of Berth	Depth Alongside (Year Surveyed)	Controlling Depth In Approaches
P33	360m	18.0m (2014)	-

**III**  
**AMENDMENTS TO PUBLICATIONS**

**\*(NM 69/2014) UPDATING OF PUBLICATION “SINGAPORE PORT INFORMATION 2014/2015”**  
**(continued)**

**WHARVES AND BERTHS**

5. Page 167 – Item 7

**JURONG ISLAND – VLCC JETTY (SPECS CONSULTANTS PTE LTD) (1° 13.6'N, 103° 40.8E)**

Amend the following:

Berth	Length of Berth	Depth Alongside (Year Surveyed)	Controlling Depth In Approaches
OVL1	445m	24.2m (2014)	22.5m

6. Page 169 – Item 12

**JURONG ISLAND (CHEVRON ORONITE PTE LTD) (1° 15.1'N, 103° 42.0E)**

Amend the following:

Berth	Length of Berth	Depth Alongside (Year Surveyed)	Controlling Depth In Approaches
1	212m	14.1m (2014)	12.3m

7. Page 172 – Item 23

**JURONG ISLAND (OILTANKING SINGAPORE LTD) (1° 16.8'N, 103° 44.1E)**

Amend the following:

Berth	Length of Berth	Depth Alongside (Year Surveyed)	Controlling Depth In Approaches
18	297m	16.3m (2014)	13.7m
19	258m	15.2m (2014)	12.8m

8. Page 180 – Item 40

**PULAU SEBAROK (VOPAK TERMINALS SINGAPORE PTE LTD) (1° 12.3'N, 103° 47.8E)**

Amend the following:

Berth	Length of Berth	Depth Alongside (Year Surveyed)	Controlling Depth In Approaches
Pier 2	264m	10.1m (2014)	16.4m

\*Source: Maritime and Port Authority of Singapore

**IV**  
**REPRINT OF RADIO NAVIGATIONAL WARNINGS**

The following Radio Navigational Warnings have been shortlisted, as they would be of particular interest to mariners.

TT026 (AMENDED ON 16 MAR 14)

TUAS RECLAMATION WORKING AREA AT WESTERN PART OF SINGAPORE PORT ARE MARKED BY BUOYS (REF. PMN: 54/2013, 30/2014).

TT175

VESSELS IN EAST JOHOR STRAIT ARE ADVISED TO NAVIGATE WITH CAUTION WHEN NEAR THE PROJECT AREAS OFF PULAU TEKONG, CHANGI AND MALANG PAPAN AS SHALLOW WATER AREAS EXIST. VESSELS ARE ADVISED TO KEEP LOOKOUT FOR TUGS AND BARGES NAVIGATING NEAR THE PROJECT AREAS AND PASSENGER FERRIES CROSSING BETWEEN CHANGI AND PULAU TEKONG AND VICINITY OF PASIR GUDANG.

TT181(amended 240203UTC JUL 14)

SEMAPHORE TOWER AT RAFFLES LIGHTHOUSE AT POSITION LAT 01° 09.606'N LONG 103° 44.450'E, DAY AND NIGHT SIGNALS REPORTED NOT OPERATIONAL. MARINERS ADVISED TO NAVIGATE WITH CAUTION.

TT185

TOMPOK UTARA LIGHT BEACON, RED AND WHITE HORIZONTAL STRIPES ON CONCRETE TUBULAR TOWER FLASHING THREE EVERY FIFTEEN SECONDS HAS BEEN ESTABLISHED POSITION LAT 01° 27.749'N LONG 104° 27.016'E.

TT186

SINGAPORE HYDROGRAPIC BOAT WIL BE CONDUCTING THE SEABED CLASSIFICATION SURVEY IN THE TSS ON 23 JULY 2014 TO 01 AUGUST 2014. WORKING HOURS FROM 0900 TO 1600 HOURS AT THE FOLLOWING CO-ORDIANTES.

- 1) Lat 01° 18.4855'N Long 103° 58.5786'E
- 2) Lat 01° 16.0427'N Long 103° 57.8472'E
- 3) Lat 01° 17.0054'N Long 104° 02.3903'E
- 4) Lat 01° 16.4416'N Long 104° 03.1137'E
- 5) Lat 01° 13.0519'N Long 103° 54.3465'E

TT961

VESSELS INTENDING TO CROSS THE TRAFFIC SEPARATION SCHEME(TSS) OR PRECAUTIONARY AREAS IN THE SINGAPORE STRAIT DURING THE HOURS OF DARKNESS ARE RECOMMENDED TO DISPLAY THE NIGHT SIGNALS CONSISTING OF 3 ALL-ROUND GREEN LIGHTS IN A VERTICAL LINE WITH EFFECT FROM 1ST JULY 2011 AT 010000UTC (0800SGT) AS DETAILED IN MARITIME AND PORT AUTHORITY OF SINGAPORE'S PORT MARINE CIRCULAR, 02 OF 2011 DATED 30 MAY 2011.

---

ISSUED BY SINGAPORE PORT OPERATIONS CONTROL CENTRE (as at 27<sup>th</sup> July 2014)

V  
**EXTRACT OF ADMIRALTY NOTICES TO MARINERS  
 FOR DUAL-BADGED CHARTS**

**These notices can also be accessed directly from UKHO Website:**

<http://www.ukho.gov.uk/ProductsandServices/MaritimeSafety/Pages/NMPublic.aspx>

**2756 MALAYSIA – Peninsula Malaysia, East Coast – Johor S – Buoyage. Coastline. Depths. Jetty. Pilot boarding places. Lights. Works.**

Source: ENC MY6B6122

**Chart 4042** [ *previous update 2502/14* ] WGS84 DATUM

Insert	the accompanying block, showing new buoyage, depths, jetty, lights and amendments to coastline, centred on:	
	① <i>West Pilot Boarding Ground</i>	1° 19′.92N., 104° 10′.57E.
	① <i>East Pilot Boarding Ground</i>	1° 17′.77N., 104° 08′.04E.
Replace	depth, <i>19</i> , with depth, <i>18<sub>3</sub></i>	1° 19′.35N., 104° 15′.63E.
Delete	maritime limit, pecked line, and associated legend, Works in progress (2012), joining:	1° 18′.00N., 104° 07′.39E.
		1° 20′.55N., 104° 08′.12E. (shore)
		1° 19′.06N., 104° 07′.48E.
		1° 17′.86N., 104° 07′.32E.
		1° 19′.04N., 104° 14′.05E.
		1° 21′.36N., 104° 13′.86E. (shore)

**Chart 4043** [ *previous update 2502/14* ] WGS84 DATUM

Insert	the accompanying block, showing new buoyage, depths, jetty, lights and amendments to coastline, centred on:	
	① <i>West Pilot Boarding Ground</i>	1° 19′.77N., 104° 09′.35E.
Replace	depth, <i>19</i> , with depth, <i>18<sub>3</sub></i>	1° 17′.77N., 104° 08′.04E.
Delete	maritime limit, pecked line, and associated legend, Works in progress (2012), joining:	1° 18′.00N., 104° 07′.39E.
		1° 20′.55N., 104° 08′.13E. (shore)
		1° 19′.06N., 104° 07′.48E.
		1° 17′.86N., 104° 07′.32E.
		1° 18′.33N., 104° 10′.00E. (E border)

**2923 SINGAPORE – West Jurong Channel, East Jurong Channel and P. Merambong E – Maritime limit. Depth. Dredged depths. Buoy.**

Source: Maritime and Port Authority of Singapore

**Chart 4030** [ *previous update 2358/14* ] WGS84 DATUM

Insert	Maritime limit, pecked line, joining:	1° 16′.588N., 103° 39′.735E.
		1° 16′.529N., 103° 39′.775E. (shore)
Delete	former Maritime limit, pecked line, joining:	1° 16′.578N., 103° 39′.717E.
		1° 16′.518N., 103° 39′.759E. (shore)

## V

**EXTRACT OF ADMIRALTY NOTICES TO MARINERS  
FOR DUAL-BADGED CHARTS**

**2923 SINGAPORE – West Jurong Channel, East Jurong Channel and P. Merambong E – Maritime limit. Depth. Dredged depths. Buoy. (continued)**


**Chart 4033** [previous update 2358/14] WGS84 DATUM

Insert	Maritime limit, pecked line, joining:	1° 16′.588N., 103° 39′.735E. 1° 16′.529N., 103° 39′.775E. (shore)
Amend	depth, $I_2$ dredged depth to, <b>3.7m (2014)</b> , centred on: dredged depth to, <b>8.7m (2014)</b> , centred on:	1° 17′.909N., 103° 41′.400E. 1° 17′.956N., 103° 41′.522E. 1° 17′.895N., 103° 41′.434E.
Delete	Former maritime limit, pecked line, joining:	1° 16′.578N., 103° 39′.717E. 1° 16′.518N., 103° 39′.759E. (shore)

**Chart 4034** [previous update 2502/14] WGS84 DATUM

Amend	dredged depth to, <b>12.0m (2014)</b> , centred on:	1° 17′.068N., 103° 43′.886E.
-------	-----------------------------------------------------	------------------------------

**Chart 4038** [previous update 1488/14] WGS84 DATUM

Move	 Kolek, from: to:	1° 18′.95N., 103° 36′.87E. 1° 18′.84N., 103° 36′.88E.
------	-------------------------------------------------------------------------------------------------------	----------------------------------------------------------

**Chart 4040** [previous update 2405/14] WGS84 DATUM

Move	 Kolek, from: to:	1° 18′.95N., 103° 36′.87E. 1° 18′.84N., 103° 36′.88E.
------	--------------------------------------------------------------------------------------------------------	----------------------------------------------------------

**3046 SINGAPORE STRAIT – Nipa Transit Anchorage Zone B – Anchorage area.**

Source: Indonesian Notice 23/233/14

**Chart 4039** [previous update New Edition 24/04/2014] WGS84 DATUM


Insert	limit of anchorage area, pecked line, joining:	(a) 1° 05′.49N., 103° 40′.84E. (existing limit) (b) 1° 05′.01N., 103° 41′.13E. (existing limit)
Delete	former limit of anchorage area, pecked line, joining:	(a) above 1° 05′.38N., 103° 40′.63E. 1° 04′.90N., 103° 40′.90E. (b) above

**3110 SINGAPORE – Pulau Semakau – Terumbu Raya SW – Rock. Depths.**

Source: UKHO

Note: **Certain copies only**

**Chart 4036** [previous update 2502/14] WGS84 DATUM

Insert	 (05)	(a) 1° 12′.585N., 103° 45′.073E.
Delete	depth, $O_2$ , and associated 2m contour, close SW of:	(a) above

V  
EXTRACT OF ADMIRALTY NOTICES TO MARINERS  
FOR DUAL-BADGED CHARTS

**3240 MALAYSIA – Peninsular Malaysia, East Coast – Tanjung Ayam S and SW – Depths.**

Source: UKHO

Note: ***Certain copies only***

**Chart 4042** [previous update 2756/14] WGS84 DATUM

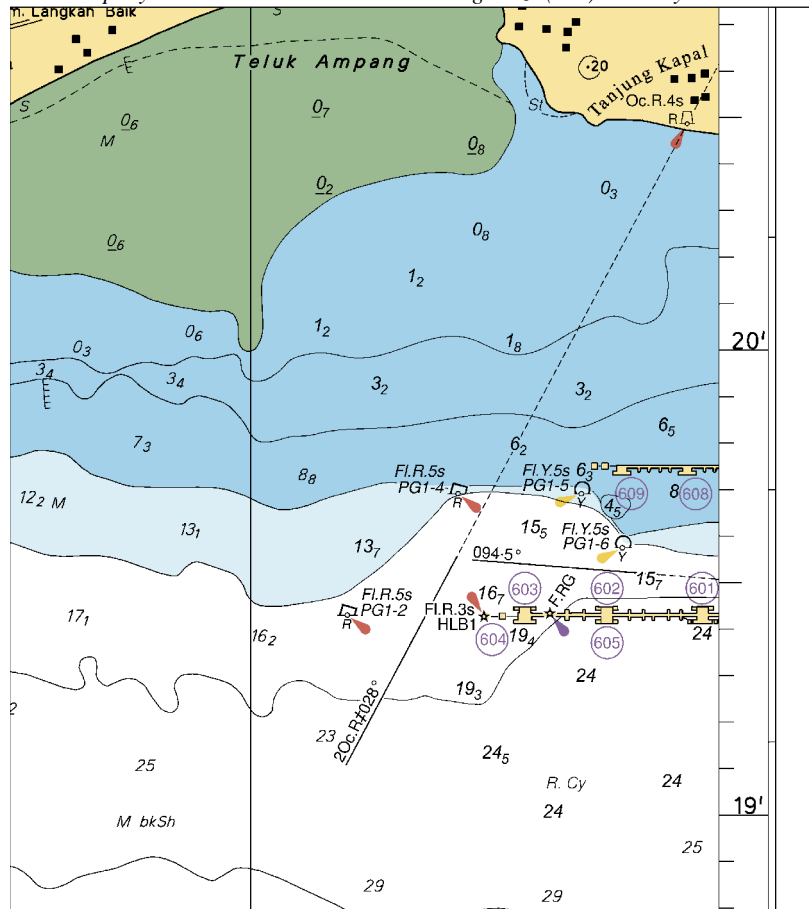
Insert	depth, <i>19</i> <sub>l</sub> , and extend 20m contour SE to enclose	1° 19′·08N., 104° 12′·18E.
	depth, <i>20</i> , enclosed by 20m contour	1° 18′·79N., 104° 10′·52E.

---

Updated to Admiralty Notices to Mariners Edition No. 31 of 2014 dated 31<sup>st</sup> July 2014.



To accompany Notice to Mariners 2756/14. Image Size (mm) 119.6 by 106.6



Block for Chart No 4043

## MPA ENC DISTRIBUTORS

ENC DISTRIBUTOR	ADDRESS	TEL/FAX /EMAIL/WEBSITE
ChartWorld GmbH  ChartWorld Asia Pacific Pte Ltd.	Atlantic Haus, Zirkusweg 1 D-20359 Hamburg Germany  Frontech Centre 07-01, 15 Jalan Kilang Barat, Singapore 159357	Tel: +49 40 853 58 6942 Fax: +49 40 853 58 6949 Email: sales@chartworld.com  Tel: +65 6513 3500  Website: <a href="http://www.chartworld.com">http://www.chartworld.com</a> <a href="http://www.ecdis-as-a-service.com">http://www.ecdis-as-a-service.com</a>
DPM (Singapore) Pte Ltd	2 Boon Leat Terrace, #05-02/03 Harbourside 2, Singapore 119844	Tel: +65 6270 4060 Fax: +65 6276 3858 Email: sales@dpmsingapore.com.sg Website: <a href="http://www.dpmsingapore.com.sg">http://www.dpmsingapore.com.sg</a>
Maritime Information Systems (MARIS)  Maritime Information Systems AS (MARIS)	52, Telok Blangah Road #01-06, Telok Blangah House, Singapore 058809  Danholmen 25, 3128 Notteroy, Norway	Tel: +65 6276 1472 Fax: +65 6276 1473 Email: : support@maris.sg Website: <a href="http://www.maris.no">http://www.maris.no</a>  Tel: +47 33 30 42 50 Fax: +47 33 30 42 51 Email: : sales@maris.no Website: <a href="http://www.maris.no">http://www.maris.no</a>
Motion Smith	15 Jalan Kilang Barat #08-01/05 Frontech Centre, Singapore 159357	Tel: +65 6220 5098 Fax: +65 6225 4902 Email: sales@motsmith.com Website: <a href="http://www.motsmith.com">http://www.motsmith.com</a>
Transas Marine Pacific Pte Ltd	Cyber Centre 16/18 Jalan Kilang Barat Off Jalan Bukit Merah Singapore 159358	Tel: +65 6271 0200 Fax: +65 6271 7300 Email: navigation.asia@transas.com Website: <a href="http://www.transas.com">http://www.transas.com</a>
Japan Hydrographic Association (Electronic Charts Division)	Daiichi Sogo Bldg, 6F 1-6-6, Hanedakuko, Ota-ku Tokyo 144-0041, Japan	Tel: +81 3 5708 7093 Fax: +81 3 5708 7094 Email: shimizu-6kj@jha.jp Website: <a href="http://www.jha.or.jp/en/jha/">http://www.jha.or.jp/en/jha/</a>
Jeppesen Norway AS	P.O Box 212 , N-4371 Egersund, Norway	Tel: +47 51 46 4700 Fax: +47 51 46 4701 Email: license.marine@jeppesen.com Website : <a href="http://www.jeppesen.com/marine">http://www.jeppesen.com/marine</a>
PRIMAR STAVANGER	Lervigsveien 36, P.O Box 60, N-4001 Stavanger, Norway	Tel: +47 51 93 9500 Fax: +47 51 93 9501 Email: sales@ecc.no Website : <a href="http://www.primar.no">http://www.primar.no</a>
The United Kingdom Hydrographic Office	Admiralty Way, Taunton, Somerset, TA1 2DN United Kingdom	Tel: +44 1823 33 7900 Fax: +44 1823 28 4077 Emails: ENCS.SalesReports@ukho.gov.uk Website: <a href="http://www.ukho.gov.uk">http://www.ukho.gov.uk</a>

**Chart Agents for the Maritime and Port Authority of Singapore**  
**Nautical Charts and Publications**

Please approach any of the appointed chart agents to purchase the Singapore Nautical Charts and Publications.

<b>CHART AGENT</b>	<b>ADDRESS</b>	<b>TEL/FAX/EMAIL/WEBSITE</b>
Cornes (Singapore) Pte Ltd	10 Anson Road #23-06/6A International Plaza Singapore 079903	Tel: +65 6223 8320 Fax: +65 6223 8321 Email: sales9850@cspl.sg Website: <a href="http://www.cornes-charts.com">http://www.cornes-charts.com</a>
DPM (Singapore) Pte Ltd	2 Boon Leat Terrace, #05-02/03 Harbourside 2, Singapore 119844	Tel: +65 6270 4060 Fax: +65 6276 3858 Email: sales@dpmsingapore.com.sg Website: <a href="http://www.dpmsingapore.com.sg">http://www.dpmsingapore.com.sg</a>
E.W. Liner Charts & Publications Pte Ltd	102F, Pasir Panjang Road, #08-01, Citilink Warehouse Complex, Singapore 118530	Tel: +65 6323 0773 Fax: +65 6323 0775 Email: ewliner@singnet.com.sg Website: <a href="http://www.ewliner.com">http://www.ewliner.com</a>
Kelvin Hughes (Singapore) Pte Ltd	896 Dunearn Road #03-05 Sime Darby Centre Singapore 589472	Tel: +65 6545 9880 Fax: +65 6545 8892 Email: leslie.khoo@kelvinhughes.com.sg Website: <a href="http://www.kelvinhughes.com">http://www.kelvinhughes.com</a>
Motion Smith	15 Jalan Kilang Barat #08-01/05 Frontech Centre Singapore 159357	Tel: +65 6220 5098 (After office hours: +65 8163 9993) Fax: +65 6225 4902 Email: sales@motsmith.com Website: <a href="http://www.motsmith.com">http://www.motsmith.com</a>

## HYDROGRAPHIC NOTE - Instructions

1. Mariners are requested to notify the Chief Hydrographer, Maritime and Port Authority of Singapore, when new or suspected dangers to navigation are discovered, changes are observed in aids to navigation or where corrections to nautical publications may be necessary. Reports, which cannot be confirmed or are lacking in certain details should not be withheld.
2. Any ambiguities of time, positioning and depth should be stressed and any firm expectation of being able to check the information provided on a following voyage should be mentioned.
3. Mariners using satellite position fixing systems, eg. GPS, should provide details of equipment and datum used (where applicable). Where bearings (true or magnetic) are taken visually or by radar to fix a position, it should include more than two objects in order to provide a check on its accuracy. A position may also be defined by bearing and distance from a conspicuous object eg. beacon, lighthouse etc.
4. The note should include a tracing or a digital image of the chart used and the details should be clearly marked.
5. Echo sounders frequently register greater depths than the advertised maximum depth for the equipment, eg. a trace appearing at 50 metres may be in fact be 550 metres or even 1050 metres for equipment whose maximum depth is 500 metres. Erroneous depths caused by 2nd transmission error can usually be recognised by the following:
  - (a) the tracing being weaker than normal for the depth registered,
  - (b) the trace appearing to pass through the transmission line,
  - (c) the feathery nature of the trace.
6. Upon receipt of a hydrographic note, a Notice to Mariners may be issued. The sender's vessel or name is quoted as the source unless the same information is also received in foreign Notices to Mariners.
7. Reports of shoals, uncharted dangers and defects in aids to navigation may also be made to the appropriate Singapore Port Operations Control Centre on VHF Channels 10, 12, 14, 68 or 73.

**HYDROGRAPHIC NOTE**

To:

Chief Hydrographer  
Maritime and Port Authority of Singapore  
460 Alexandra Road PSA Building #20-00  
Singapore 119963

Tel : (65) 6375 1227  
Fax : (65) 6278 7646  
Email : [hydrographic@mpa.gov.sg](mailto:hydrographic@mpa.gov.sg)

**Sender's Contact Details** :

Date : .....  
Name of Vessel : .....  
Address of Sender : .....  
Tel : ..... Fax : .....  
Email : .....

**Nature of Observation** :

General Location : .....  
Subject : .....  
Position : Lat. .... Long. ....  
Charts Used : .....  
Date & Time of Observation : .....  
Details : .....  
.....  
.....  
Attachment : .....

**Equipment Used** :

Type of Position Fixing : ..... GPS / DGPS ..... Others : .....  
Type of Echo Sounder : .....

Name and Signature : .....

Ship's/Company's Stamp : .....