



SINGAPOREAN NOTICES TO MARINERS

SECTION	CONTENT	Page
I	Affected Charts & Publications	1
II	New Charts & Publications	3
	Notices to Mariners and Chart Corrections	9
	Temporary and Preliminary Notices	10
III	Navigational Information	13
	Amendments to Publications	14
IV	Reprint of Maritime Safety Information	16
V	Extract of Admiralty Notices to Mariners for Dual-Badged Charts	18

The monthly Notices to Mariners contain information required to keep charts and publications published by the Hydrographic Department, Maritime and Port Authority of Singapore up-to-date.

Mariners are requested to notify the Chief Hydrographer, Maritime and Port Authority of Singapore, immediately of the discovery of new or suspected dangers to navigation, observed changes to aids to navigation and ways Singaporean Charts and Publications can be improved. The Hydrographic Note on the back page should be used for this purpose.

Detailed information of charts and publications (coverage of charts, latest editions and distributors) are available on the Maritime and Port Authority Website: www.mpa.gov.sg

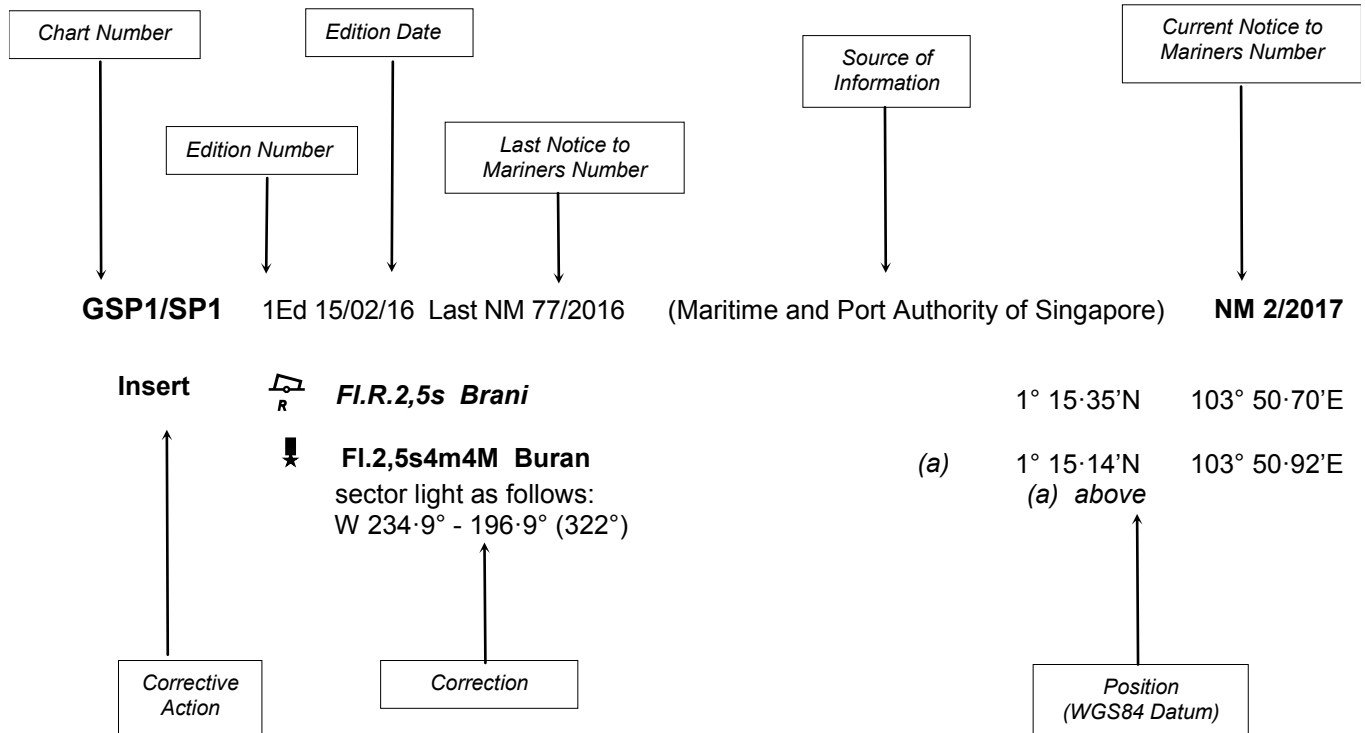
- [Singaporean Notice to Mariners](#)
- [Singaporean Charts](#)
- [Dual-Badged Charts](#)
- [Singapore ENC](#)
- [Malacca and Singapore Straits ENC](#)
- [Singapore Port Information](#)
- [Singapore Tide Tables](#)

Contact information:

Hydrographic Department
Maritime and Port Authority of Singapore
7B Keppel Road
#20-00 Tanjong Pagar Complex
Singapore 089055
Tel : (65) 6325 2027
Fax : (65) 6226 1076
Email : hydrographic@mpa.gov.sg

EXPLANATION OF FORMAT

The elements of a typical chart correction are explained below.



Notes:

- Notice to Mariners number followed by:
T indicates a Temporary Notice (eg. **NM 3T/2017**).
P indicates a Preliminary Notice (eg. **NM 4P/2017**).
- Bearings are true reckoned clockwise from 000° to 359°; those relating to lights are from seaward.
- Heights and elevations are above Mean High Water Springs.

I
AFFECTED CHARTS AND PUBLICATIONS

INDEX OF AFFECTED CHARTS

DESCRIPTION	NOTICE NO.	PAGE NO.
New Charts and Publications	-	3 to 5
Singapore Tide Tables 2018	-	6 to 8
Singaporean Chart GSP1/SP1	*70	9
Singaporean Chart 200	71	9
Singaporean Chart 502	72	9
Temporary and Preliminary Notices	73T, 74T, *75T, 76P	10 to 12
Singapore Port Marine Notices/Circulars	*77	13
Amendments to Publications	*78	14, 15
Reprint of Maritime Safety Information	-	16, 17
Extract of Admiralty Notices to Mariners for Dual-Badged Charts	-	18, 19

*Source: Maritime and Port Authority of Singapore

I
AFFECTED CHARTS AND PUBLICATIONS

INDEX OF NOTICES

NOTICE NO.	DESCRIPTION	PAGE NO.
-	New Charts and Publications	3 to 5
-	Singapore Tide Tables 2018	6 to 8
*70	Singaporean Chart GSP1/SP1	9
71	Singaporean Chart 200	9
72	Singaporean Chart 502	9
73T, 74T, *75T, 76P	Temporary and Preliminary Notices	10 to 12
*77	Singaporean Port Marine Notices/Circulars	13
*78	Amendment to Publications	14, 15
-	Reprint of Maritime Safety Information	16, 17
-	Extract of Admiralty Notices to Mariners for Dual-Badged Charts	18, 19

*Source: Maritime and Port Authority of Singapore

II NEW CHARTS AND PUBLICATIONS

NEW EDITION CHART TO BE PUBLISHED ON 31ST AUGUST 2017

Chart Number	:	CHARTS FOR SMALL CRAFT
Title	:	Singapore Port Waters and Approaches - 2017/2018 Edition
Date to be published	:	31 st August 2017
Size of Chart	:	600·0 x 400·0 mm
Description	:	The publication contains 12 Small Craft Charts and related nautical information bound into an atlas. The symbols, abbreviations and term depicted on these charts are consistent with the International Hydrographic Organization Chart Standards and Specifications.



Symbols for the locations of pleasure craft facilities and areas for sea sport activities such as board sailing, dinghy sailing, keelboat sailing, power-boating and water-skiing are also included and highlighted in red.

Chart of the same publication Edition 2016 published on 4th January 2016 will be superseded.

II NEW CHARTS AND PUBLICATIONS

NEW EDITION SINGAPOREAN CHARTS TO BE PUBLISHED ON 15TH SEPTEMBER 2017

Chart Number	:	201
Title	:	Malacca Strait Tanjung Keling to Western Entrance of Singapore Strait
Coverage	:	Lat 01° 06·43' N 02° 16·99' N Long 101° 42·91' E 103° 26·45' E
Scale	:	1 : 200 000
Date to be published	:	15 th September 2017
Size of Chart	:	960.0 x 650.0 mm
Description	:	This new edition includes new submarine cables and updated bathymetric details.

The existing chart of the same number published on 15th August 2014 will be superseded.

Chart Number	:	500
Title	:	Malacca and Singapore Straits Pulau Pisang To Raffles Lighthouse
Coverage	:	Lat 01° 04·05' N 01° 30·50' N Long 103° 05·80' E 103° 44·61' E
Scale	:	1 : 75 000
Date to be published	:	15 th September 2017
Size of Chart	:	959.8 x 649.9 mm
Description	:	This new edition includes changes to depths from updated surveys covering Temasek and Sinki Fairways, Raffles Shoal, updated coastlines of Jurong Island and submarine cables.

The existing chart of the same number published on 26th September 2013 will be superseded.

II NEW CHARTS AND PUBLICATIONS

NEW EDITION SINGAPORE ELECTRONIC NAVIGATIONAL CHARTS (ENC) RELEASED ON 17TH JULY 2017

1. A new edition of the Singapore ENC covering Singapore waters and its approaches was released on 17th July 2017. This new edition Singapore ENC supersedes the earlier edition.
2. The 16 ENC cells and their respective coverage are as follows:

Cell Name	Coverage
SG5C4030	West Jurong Anchorages and Temasek Fairway
SG5C4031	Western Approaches to Jurong Island
SG5C4032	Sinki Fairway
SG5C4033	Tuas Bay, West Jurong Channel and Pesek Basin
SG5C4034	East Jurong Channel, Pasir Panjang Terminal and West Keppel Fairway
SG5C4035	Western Anchorages, Jong Fairway and Cruise Bay
SG5C4036	Raffles Lighthouse to The Sisters
SG5C4037	Keppel Harbour, Tanjong Pagar Terminal and Approaches
SG5C4038	Johor Strait - Western Part
SG5C4039	Western Approaches to the Main Strait
SG5C4041	Pulau Sebarok to Changi
SG5C4043	Kuala Johor
SG5C4044	Johor Strait - Eastern Part
SG54044A	Serangoon Harbour
SG54044B	Pelabuhan Johor (Johor Port)
SG54044C	Sembawang

3. The new edition Singapore ENC can be purchase from any of our Singapore ENC distributors.

Information on our Singapore ENC distributors can be found from the following link:

<http://www.mpa.gov.sg/web/portal/home/port-of-singapore/port-operations/charts-tidal-information-aids-to-navigation-hydrography/nautical-charts/singapore-electronic-navigational-chart-enc>

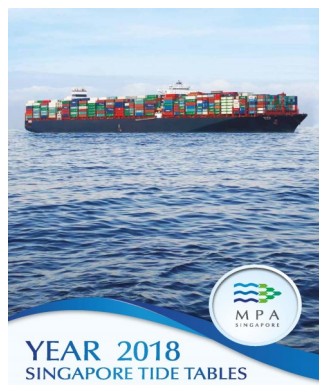
II NEW CHARTS AND PUBLICATIONS

SINGAPORE TIDE TABLES YEAR 2018 TO BE PUBLISHED ON 11TH SEPTEMBER 2017

Summary of Publication

This publication contains Tidal Height and Tidal Stream Predictions covering stations in Singapore Port Waters and along the Straits of Malacca and Singapore.

This publication consists of 5 segments.



1. High and Low Water Predictions at the following stations:

- a) Tanjong Pagar
- b) Sembawang

2. Hourly Tidal Height Predictions at the following stations:

- a) West Tuas
- b) Sultan Shoal Lighthouse
- c) Raffles Lighthouse
- d) West Coast
- e) Bukom
- f) Tanjong Pagar
- g) Tanah Merah
- h) Tanjong Changi
- i) Sembawang
- j) Singapore Strait - Horsburgh Lighthouse

3. Hourly Tidal Stream Predictions at the following stations:

- a) Main Strait - off Tuas View
- b) Sinki Fairway - Banyan
- c) Jong Fairway - off Sisters Buoy
- d) Main Strait - off Shell SBM Buoy
- e) Sentosa - off Cruise Bay
- f) East Buran
- g) Main Strait - Eastern Petroleum A
- h) Kuala Johor - off Malang Tiga

4. Maximum and Slack Tidal Stream Predictions at the following stations:

- a) Malacca Strait - off Pulau Iyu Kecil Light
- b) Singapore Strait - Selat Phillip
- c) Singapore Strait - Karang Banteng (Buffalo Rock)
- d) Singapore Strait - Horsburgh Lighthouse

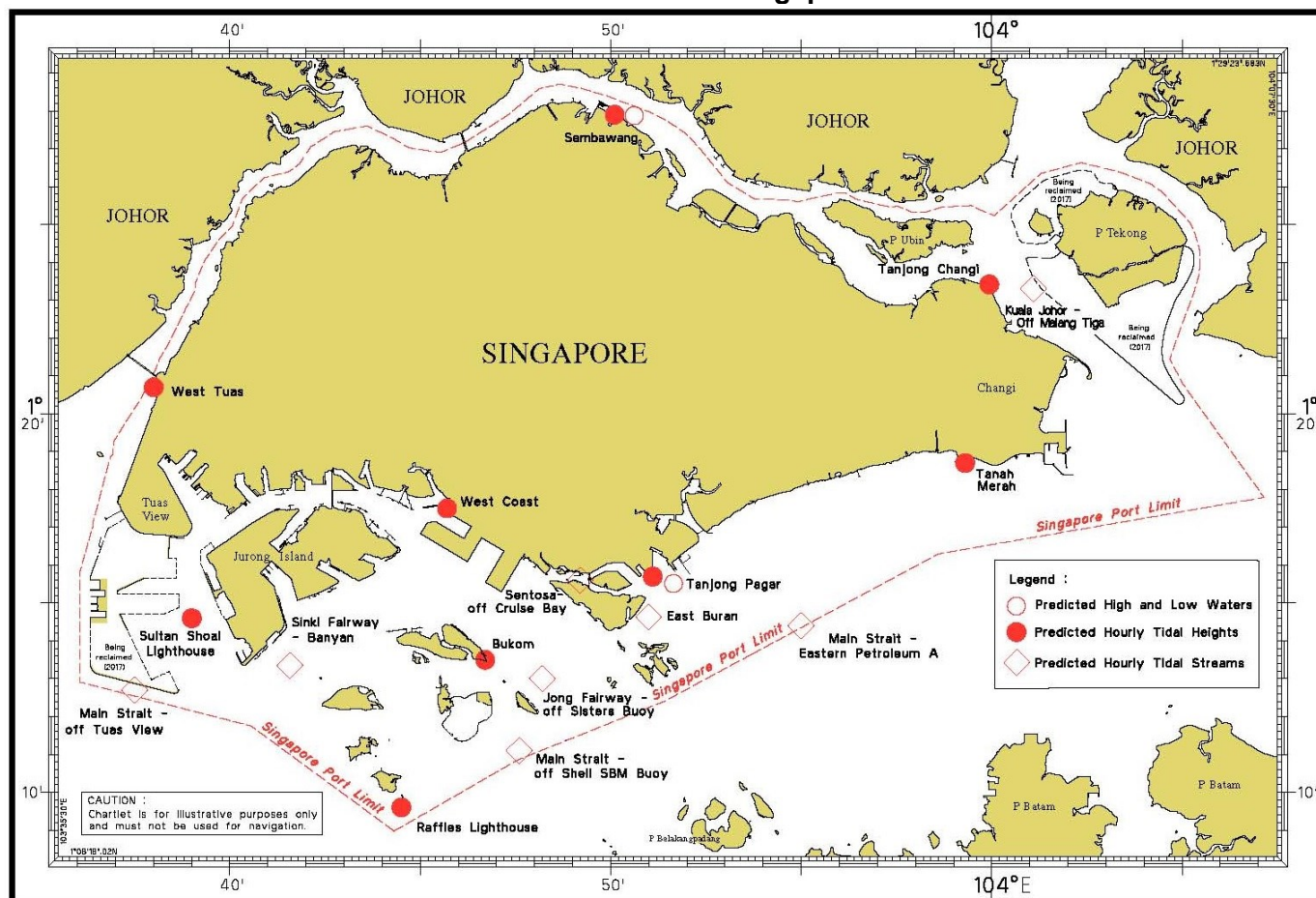
5. Malacca Strait - High and Low Water Predictions at the following stations:

- a) Kedah Pier, Pulau Pinang
- b) Port Dickson
- c) Kuala Batu Pahat

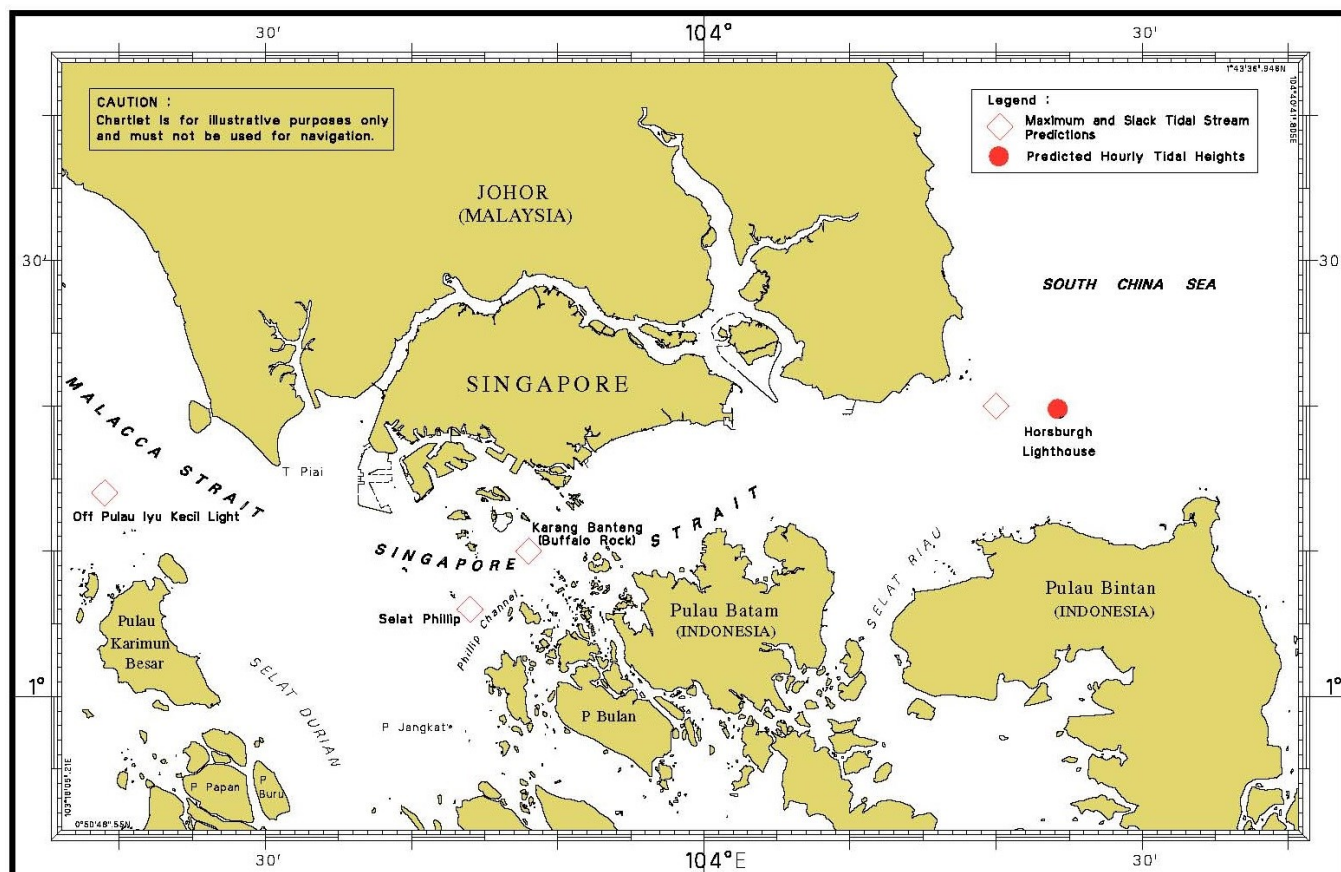
The locations of the above stations are shown in the chartlets below:

II NEW CHARTS AND PUBLICATIONS

Tidal Prediction Stations within Singapore Port Waters

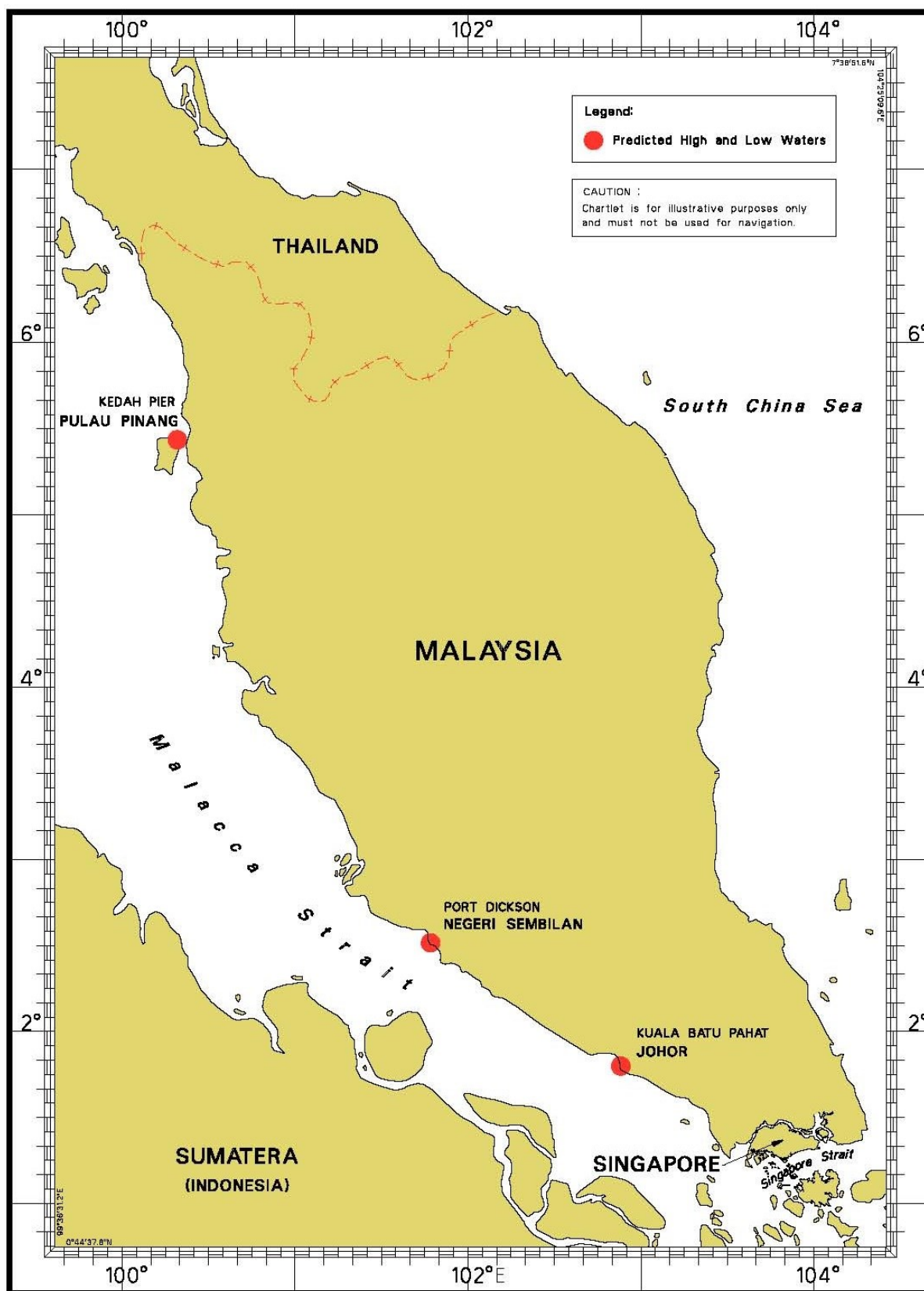


Tidal Prediction Stations in Straits of Malacca and Singapore



II NEW CHARTS AND PUBLICATIONS

Tidal Prediction Stations In Malacca Strait





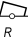
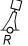



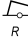
This publication can be purchased from any of the MPA appointed Chart Distributors.

Information on the MPA appointed Chart Distributors can be found from the following link:

<http://www.mpa.gov.sg/web/portal/home/publications/singapore-tide-tables>

II

NOTICES TO MARINERS AND CHART CORRECTIONS

GSP1/SP1	2 Ed 1/03/17 Last NM 64/2017	(Maritime and Port Authority of Singapore)	NM 70/2017
Move	 <i>Fl. Y. 4s</i> , from:	1° 15·33'N	103° 37·66'E
	to:	1° 15·54'N	103° 37·67'E
	 <i>Fl. Y. 4s</i> , from:	1° 15·33'N	103° 38·21'E
	to:	1° 15·54'N	103° 38·12'E
Delete	 <i>Fl. R. 4s</i>	1° 15·33'N	103° 38·76'E
Insert	 <i>Fl. R. 4s</i>	1° 15·44'N	103° 38·71'E
<hr/>			
200	4 Ed 1/09/15 Last NM 65/2017	(Royal Malaysian Navy Notice No. 6/110/17)	NM 71/2017
Replace	dredged depth, <i>17.3m</i> , with maintained depth, 18.0m	2° 52·84'N	101° 15·51'E
<hr/>			
502	7 Ed 1/09/15 Last NM 66/2017	(Marine Department of Malaysia No.53/2016)	NM 72/2017
Replace	 MOLF3 FI(2)G.10s with  MOLF3 FI(2)G.10s	1° 20·06'N	104° 08·23'E
	 MOLF4 FI(2)R.10s with  MOLF4 FI(2)R.10s	1° 20·13'N	104° 08·06'E
<hr/>			

II

TEMPORARY AND PRELIMINARY NOTICES

(NM 73T/2017)

SINGAPORE STRAIT - WRECK REMOVAL OPERATIONS FOR SUNKEN VESSEL 'HARITA BERLIAN 18'

- Description** : Wreck removal operations for the sunken vessel 'Harita Berlian 18' will be executed in the westbound lane of the Traffic Separation Scheme in the Singapore Strait (off Tanjung Setapa/Pulau Bintan). (STRAITREP Sector 9).
- Work Vessel and Call Sign** : **SMIT Cyclone (S6FO8)**
- Planned dates of Operation** : With effect from 31st July 2017. The operations are conducted 24 hours.

1. The designated working area is:

Position	Co-ordinates (WGS84)	
	Latitude (N)	Longitude (E)
A	01°17·16'	104°10·98'
B	01°16·84'	104°10·99'
C	01°16·80'	104°10·61'
D	01°17·13'	104°10·57'

2. Charts Affected: Singaporean 202, 502 and Dual Badged BA4042.
3. Mariners are advised to navigate with caution and give a wide berth.
4. Navigational warning broadcast will be promulgated by Singapore VTIS on VHF CH 10, 16, 09 and NAVTEX. Mariners are to maintain a listening watch.

Source : SMIT Singapore Pte Ltd

II

TEMPORARY AND PRELIMINARY NOTICES

(NM 74T/2017)

SINGAPORE STRAIT - INSTALLATION OF ISOLATED DANGER BUOY AT OFFSHORE JOHOR

Description : Installation of isolated danger buoy colour *BRB*, with light characteristics *Fl(2)10s* to mark the sunken vessel 'Putri Sea'

Position of buoy : **Latitude** 01°17·88'N
Longitude 104°07·24'E

Remark : Mariners are advised to navigate with caution and give a wide berth.

Charts Affected : Singaporean GSP1/SP1, 202, 502 and Dual Badged BA4042, 4043

Source : Marine Department Malaysia No.42(T)/2017

*(NM 75T/2017)

OUTER SHOAL BEACON DAMAGED

Description : The green tabular tower, Outer Shoal beacon was reported damaged, green cone topmark of the beacon is reported missing.

Position of buoy : **Latitude** 01°15·015'N
Longitude 103°51·808'E

Remark : Mariners are advised to navigate with caution.

Charts Affected : Singaporean GSP1/SP1, 502 and Dual Badged BA4037, 4040 and 4041.

Source : Maritime and Port Authority of Singapore

II

TEMPORARY AND PRELIMINARY NOTICES**(NM 76P/2017)****TATA INDICOM INDIA-SINGAPORE CABLE SYSTEM (TIISCS) SEGMENT 1 -
CABLE REPAIR OPERATIONS**

- Description** : Submarine cable repair operations for the TIISCS cable shall be executed south of the east-bound lane of the Routeing System in the Singapore Strait (Main Strait). (STRAITREP Sector 7).
- Work Vessel and Call Sign** : **CB NUSANTARA EXPLORER (YBHR2)**
- Planned dates of Operation** : With effect from 31st July 2017 until 15th August 2017. The operations are conducted on a 24 hour basis

1. The designated working area is:

Position	Co-ordinates (WGS84)	
	Latitude (N)	Longitude (E)
A	01°06.815'	103°31.578'
B	01°03.850'	103°36.402'
C	01°02.892'	103°35.797'
D	01°05.810'	103°30.971'

2. Charts Affected: Singaporean 202, 500, 501 and Dual Badged BA4039.
3. Mariners are advised to navigate with caution and give a wide berth.
4. Navigational warning broadcast will be promulgated by Singapore VTIS on VHF CH 73 and NAVTEX. Mariners are to maintain a listening watch.

Source : Monson Agencies Pte Ltd

Note: Former notice 67P/2017 is cancelled.

III NAVIGATIONAL INFORMATION

*(NM 77/2017) SINGAPORE PORT MARINE NOTICES/CIRCULARS

The Port Marine Notices/Circulars shortlisted below would be of particular interest to Mariners. Details and complete list of Port Marine Notices/Circulars are available at this link:

<http://www.mpa.gov.sg/web/portal/home/port-of-singapore/circulars-and-notices>

PMN No.	Subject
93/2017	Reclamation and soil investigation works off Tuas
98/2017	Dredging works in Temasek Fairway
101/2017	Soil investigation works off Shell Bukom 10, 10A -10C and vicinity
103/2017	Construction of a Breakwater off Tanah Merah Ferry Terminal

PMC No.	Subject
7/2017	Maritime Welfare Fee Concession

*Source: Maritime and Port Authority of Singapore

III AMENDMENTS TO PUBLICATIONS

*(NM 78/2017) UPDATING OF PUBLICATION “SINGAPORE PORT INFORMATION 2016/2017”

CHARACTERISTICS OF AIDS TO NAVIGATION

1. Page 132

TUAS VIEW EXTENSION

Amend the following:

Name Of Beacon/Buoy	Position Lat. N Long. E	Structure, Colour & Shape	Light Characteristic	Owner
F2-DDJV-1	01°15·543' 103°37·671'	Yellow pillar, with 'X' topmark	Fl.Y.4s	DIAP-DAELIM
F2-DDJV-2	01°15·544' 103°38·124'	Yellow pillar, with 'X' topmark	Fl.Y.4s	DIAP-DAELIM
F2-DDJV-3	01°15·440' 103°38·709'	Red pillar with can topmark	Fl.R.4s	DIAP-DAELIM

2 Page 133

Insert the following:

Name Of Beacon/Buoy	Position Lat. N Long. E	Structure, Colour & Shape	Light Characteristic	Owner
PUB TDP 1	01°18·293' 103°37·244'	Yellow pillar, with 'X' topmark	Fl(2)Y.5s (sync)	PUB
PUB TDP 2	01°18·299' 103°37·258'	Yellow Spar	Fl(2)Y.5s (sync)	PUB
PUB TDP 3	01°18·295' 103°37·268'	Yellow Spar	Fl(2)Y.5s (sync)	PUB
PUB TDP 4	01°18·292' 103°37·278'	Yellow Spar	Fl(2)Y.5s (sync)	PUB
PUB TDP 5	01°18·271' 103°37·271'	Yellow Spar	Fl(2)Y.5s (sync)	PUB
PUB TDP 6	01°18·275' 103°37·261'	Yellow Spar	Fl(2)Y.5s (sync)	PUB
PUB TDP 7	01°18·279' 103°37·251'	Yellow Spar	Fl(2)Y.5s (sync)	PUB
PUB TDP 8	01°18·289' 103°37·255'	Yellow Spar	Fl(2)Y.5s (sync)	PUB
PUB TDP 9	01°18·296' 103°37·143'	Yellow pillar, with 'X' topmark	Fl(2)Y.5s (sync)	PUB

III AMENDMENTS TO PUBLICATIONS

WHARVES AND BERTHS

3. Page 166

22 JURONG ISLAND (PETROLCHEMICAL CORPORATION OF SINGAPORE)
(1°15·9'N, 103°43·0'E)

Amend the following:

Berth	Length of Berth Box	Max LOA	Depth Alongside (Year Surveyed)	Controlling Depth In Approaches
No.3 (Liquid)	130m	130m	10.2m (2014)	10·0m
No.4 (Liquid)	140m	140m	12.1m (2014)	12·0m
No.5 (Liquid)	140m	140m	12.0m (2014)	11·9m

4. Page 167

23 JURONG ISLAND (OILTANKING SINGAPORE LTD) (1°16·8'N, 103°44·1'E)

Insert the following:

Berth	Length of Berth Box	Max LOA	Depth Alongside (Year Surveyed)	Controlling Depth In Approaches
22	275m	250m	14·1m (2017)	13·2m

5. Page 169

26 JURONG TERMINAL (PULAU DAMAR LAUT) (1°18·1'N, 103°42·9'E)

Amend the following:

Berth	Length of Berth Box	Max LOA	Depth Alongside (Year Surveyed)	Controlling Depth In Approaches
J13	150m	130m	10·5m (2017)	11·2m

*Source: Maritime and Port Authority of Singapore

IV

REPRINT OF MARITIME SAFETY INFORMATION

The following Maritime Safety Information have been shortlisted, as they would be of particular interest to mariners.

TT175

VESSELS IN EAST JOHOR STRAIT ARE ADVISED TO NAVIGATE WITH PARTICULAR ALERTNESS AND CAUTION WHEN NEAR PROJECT AREAS OFF PULAU TEKONG, CHANGI AND MALANG PAPAN AS SHALLOW WATER AREA EXIST. VESSELS ARE REMINDED TO PROCEED AT SAFE SPEED AND MAINTAIN A PROPER LOOKOUT, PARTICULARLY FOR TUGS AND BARGES NAVIGATING NEAR THE PROJECT AREAS AND PASSENGER FERRIES CROSSING BETWEEN CHANGI AND PULAU TEKONG AND VICINITY OF PASIR GUDANG.

TT273

ALL VESSELS ARE ADVISED TO NAVIGATE WITH CAUTION, COMPLY WITH THE INTERNATIONAL COLLISION REGULATIONS AND MAINTAIN VHF RADIO WATCH AND LISTEN TO TRAFFIC INFORMATION WHEN NAVIGATING IN THE SINGAPORE STRAIT AND PORT WATERS. MARINERS ARE ALSO ADVISED TO KEEP A GOOD LOOKOUT OF FREQUENT FERRIES CROSSING THE SINGAPORE STRAIT.

TT363

MARINERS ARE REMINDED NOT TO ANCHOR IN ALL AREAS IN THE TSS OF THE STRAITS OF MALACCA AND SINGAPORE AS WELL AS BETWEEN THE LANDWARD LIMITS OF THE TSS AND APPROACHES TO THE PORTS. VESSELS ENTERING ANY PORT IN ANY LITTORAL STATES ARE TO ANCHOR IN THE ANCHORAGES DESIGNATED BY THE RESPECTIVE LITTORAL STATES ONLY.

TT389

NIPAH NORTH CARDINAL BEACON AT LAT 1°10'40"N LONG 103°39'74"E IS REPORTED UNLIT. ALL VESSELS ARE ADVISED TO NAVIGATE WITH CAUTION.

TT392 (AMENDED 21 MAR 2017 0330Z)

A TUG BOAT 'HARITA BERLIAN 18' SANK AT POSITION 1°17'00"N 104°10'00"E. MARINERS ARE ADVISED TO NAVIGATE WITH CAUTION WHEN IN THE VICINITY.

TT398 (AMENDED 230440UTC JUN 2017)

A VESSEL HAD SUNK AT LOCATION LATITUDE 1°25'915"N LONGITUDE 104°27'389"E IN THE APPROACHES TO THE WEST BOUND LANE OF THE MIDDLE CHANNEL, NORTH EAST OFF HORSBURGH LIGHTHOUSE. THE LEAST DEPTH AT THE LOCATION IS 12.6M. AN AIS-EQUIPPED ISOLATED DANGER BUOY WITH LIGHT CHARACTERISTICS FL(2)10S HAS BEEN INSTALLED AT POSITION LATITUDE 1°26'224"N LONGITUDE 104°27'585"E IN THE APPROACHES TO THE WEST BOUND LANE OF THE MIDDLE CHANNEL.

AN UNAUTHORISED AND INAPPROPRIATELY POSITIONED ISOLATED DANGER BUOY WITH LIGHT CHARACTERISTICS FL(2)10S IS LOCATED AT POSITION LATITUDE 1°25'897"N LONGITUDE 104°27'391"E.

MARINERS ARE ADVISED TO NAVIGATE WITH CAUTION AND GIVE A WIDE BERTH.

TT399

VESSELS ARRIVING TO SINGAPORE OR TRANSITING THROUGH THE STRAIT ARE RECOMMENDED TO UPDATE THEIR DESTINATION ACCURATELY IN THE AIS TO ENHANCE SITUATION AWARENESS FOR OTHER TRAFFIC IN THE VICINITY, EXAMPLE TO INDICATE SG-PEGB.

TT412

SAFE WATER MARK BUOY LFI.10S AT 1°03'03"N 103°39'00"E IS REPORTED UNLIT.

TT418

WEST BOUND DEEP DRAFT VESSELS AND VLCCS ARE REMINDED TO COMPLY WITH THE RULES OF VESSELS NAVIGATING THROUGH THE STRAITS OF MALACCA AND SINGAPORE (SOMS). THEY SHALL ALLOW FOR AN UKC OF AT LEAST 3.5 METRES AT ALL TIMES DURING THE ENTIRE PASSAGE THROUGH THE SOMS AND AS FAR AS IT IS SAFE & PRACTICABLE, PROCEED AT A SPEED OF NOT MORE THAN 12 KTS OVER THE GROUND IN THE WESTBOUND LANE OF THE SINGAPORE STRAIT (BETWEEN SOUTH OF ST JOHN'S ISLAND & RAFFLES LIGHTHOUSE.)

THEY ARE ADVISED TO BROADCAST, 8 HOURS BEFORE ENTERING THE TSS, NAVIGATIONAL INFORMATION GIVING NAME, DEADWEIGHT, DRAUGHT, SPEED AND TIMES OF PASSING HORSBURGH LIGHTHOUSE AND RAFFLES LIGHTHOUSE.

IV**REPRINT OF MARITIME SAFETY INFORMATION**

TT419 (AMENDED 221300UTC JULY 2017)

BATU BERHENTI ISOLATED BUOY FI(2)5S AT POSITION 1°11'790"N 103°52'474"E IS REPORTED MISSING FROM ITS CHARTED POSITION. ALL VESSELS NAVIGATING IN THE VICINITY SHALL EXERCISE EXTRA CAUTION AND REPORT TO POCC WHEN THE DRIFTING BATU BERHANTI BUOY IS SIGHTED.

TT961

VESSELS INTENDING TO CROSS THE TRAFFIC SEPERATION SCHEME (TSS) OR PRECAUTIONARY AREAS IN THE SINGAPORE STRAIT DURING THE HOURS OF DARKNESS ARE RECOMMENDED TO DISPLAY THE NIGHT SIGNALS CONSISTING OF 3 ALL ROUND GREEN LIGHTS IN A VERTICAL LINE AS DETAILED IN THE MARITIME AND PORT AUTHORITY OF SINGAPORE'S PORT MARINE CIRCULAR, 04 OF 2013 DATED 7 MAY 2013.

SR123

SEA ROBBERIES ARE REPORTED IN THE SINGAPORE STRAIT. ALL VESSELS ARE REMINDED TO MAINTAIN A PROPER LOOK-OUT AND REPORT ANY SUSPICIOUS CRAFT TO VTIS SINGAPORE.

ISSUED BY SINGAPORE PORT OPERATIONS CONTROL CENTRE (as at 30th July 2017)

V

EXTRACT OF ADMIRALTY NOTICES TO MARINERS FOR DUAL-BADGED CHARTS

These notices can also be accessed directly from UKHO Website:

<https://www.admiralty.co.uk/maritime-safety-information/admiralty-notices-to-mariners>

3098(P) SINGAPORE - Port Approach Guide Singapore - Notes.

Source: Maritime and Port Authority of Singapore

1. Updated Section: Berth Information - Tanjong Penjuru - Shell Tanker Jetty (1°17'46"N 103°44'77"E)

Replace:

- The berth has a depth alongside of 10.3m (2013) and a length of 205m.

With:

- The berth has a depth alongside of 10.1m (2017) and a length of 205m.

2. Updated Section: Berth Information Tuas Jetty

Replace:

Tuas Jetty (1°17'22"N 103°36'75"E)

- A T-shaped jetty, with lights (yellow round towers) exhibited from each end, extends nearly 5 cables SW from the shore. At the head of the jetty, there is a berth 200m long which accommodates small vessels carrying explosives or dangerous cargoes. Whilst there is a least charted depth of 6.3m alongside, the maximum draught permissible is 6.0m. A ramp, which lies at the root of the jetty, can accept craft with a draught of 2.2m.
- The jetty operators require a minimum ETA of 24 hours for berthing preparations. Berthing at Tuas Jetty is strictly controlled and can only be undertaken with the prior permission of Singapore Technologies Logistics Pte Ltd, 5 Clementi Loop, ST Logistics Centre, Singapore 129816.

With:

Tuas Megayard (1°15'08"N 103°36'42"E)

- Consists of 17 berths, the largest and deepest berth is No 16, which is 450m in length and 15.1m (2016) in depth.

Singapore Lube Park Jetty (1°16'66"N 103°36'60"E)

- Singapore Lube Park Jetty (1°16'66"N 103°36'60"E); consists of four berths, with depths alongside ranging from 14.9m to 16.5m (2015). The longest berth is 220m in length. Controlling depths in the approaches to the berths range from 13.4 to 13.7m. The facility handles bulk liquid cargoes.

Tuas Jetty (1°17'22"N 103°36'75"E)

- A T-shaped jetty, with lights (yellow round towers) exhibited from each end, extends nearly 5 cables SW from the shore. At the head of the jetty, there is a berth 200m long which accommodates small vessels carrying explosives or dangerous cargoes. Whilst there is a least charted depth of 6.3m alongside, the maximum draught permissible is 6.0m. A ramp, which lies at the root of the jetty, can accept craft with a draught of 2.2m.
- The jetty operators require a minimum ETA of 24 hours for berthing preparations. Berthing at Tuas Jetty is strictly controlled and can only be undertaken with the prior permission of Singapore Technologies Logistics Pte Ltd, 5 Clementi Loop, ST Logistics Centre, Singapore 129816.

V

EXTRACT OF ADMIRALTY NOTICES TO MARINERS FOR DUAL-BADGED CHARTS

3098(P) SINGAPORE - Port Approach Guide Singapore - Notes. (continued)

3. Updated Section: Berth Information

Replace:

Temasek Basin (1°13·80'N 103°40·30'E)

- Helios Terminal is situated on the SE side of the basin, from which a large finger pier projects 2½ cables NW into the centre.
- Operated by Helios Terminals Corporation Pte Ltd, there are six berths, designated OHT 1-6. OHT 1-3 are on the E side of the pier, OHT 4-6 on the W side. The deepest berths are OHT 1 and 2 with a least depth alongside of 18·5m (2007), and the longest are OHT 4-6 with a combined length of 410·8m.

With:

Temasek Basin (1°13·80'N 103°40·30'E)

- Helios Terminal is situated on the SE side of the basin, from which a large finger pier projects 2½ cables NW into the centre.
- Operated by Helios Terminals Corporation Pte Ltd, there are six berths, designated OHT 1-6. OHT 1-3 are on the E side of the pier, OHT 4-6 on the W side. The deepest berths are OHT 1, 2 and 3 with a least depth alongside of 18·5m (2007), and the longest are OHT 4-6 with a combined length of 410·8m.
- SLNG Terminal, operated by Singapore LNG Corporation, comprises three numbered berths, situated between the N and E part of the basin. OSLN 1 (1°14·05'N 103°40·23'E), with a depth alongside of 17·8m (2016) can accept a vessel with a maximum capacity of 265 000 cu.m, 345m LOA, and 13m draught.

Jurong Aromatics Corporation Terminal (1°15·49'N 103°39·49'E)

- Jurong Aromatics Corporation Terminal, situated on the W side of Jurong Island comprises three dolphin berths, open to Temasek Fairway. Berth No 1 has a depth alongside of 16·7m (2017), Berth No's 2 and 3 have depths alongside of 17·0m (2017).

4. These changes will be included in a New Edition of Chart 8175 to be published August 2017.

Chart affected - 8175

3365 MALAYSIA - Peninsular Malaysia, East Coast - Beting Tekong SW and SINGAPORE - Pulau Tekong E - NM Blocks. Buoyage

Source: Malaysian Notice 5/88/17 and Maritime and Port Authority of Singapore

Chart 4043 [previous update New Edition 15/06/2017] WGS84 DATUM

Insert	the accompanying block, centred on:	1°26·3'N 104°00·7'E
Amend	designation of buoy to, <i>Tekong 23</i>	1°24·38'N 104°05·37'E
	designation of buoy to, <i>Tekong 22</i>	1°23·66'N 104°05·39'E

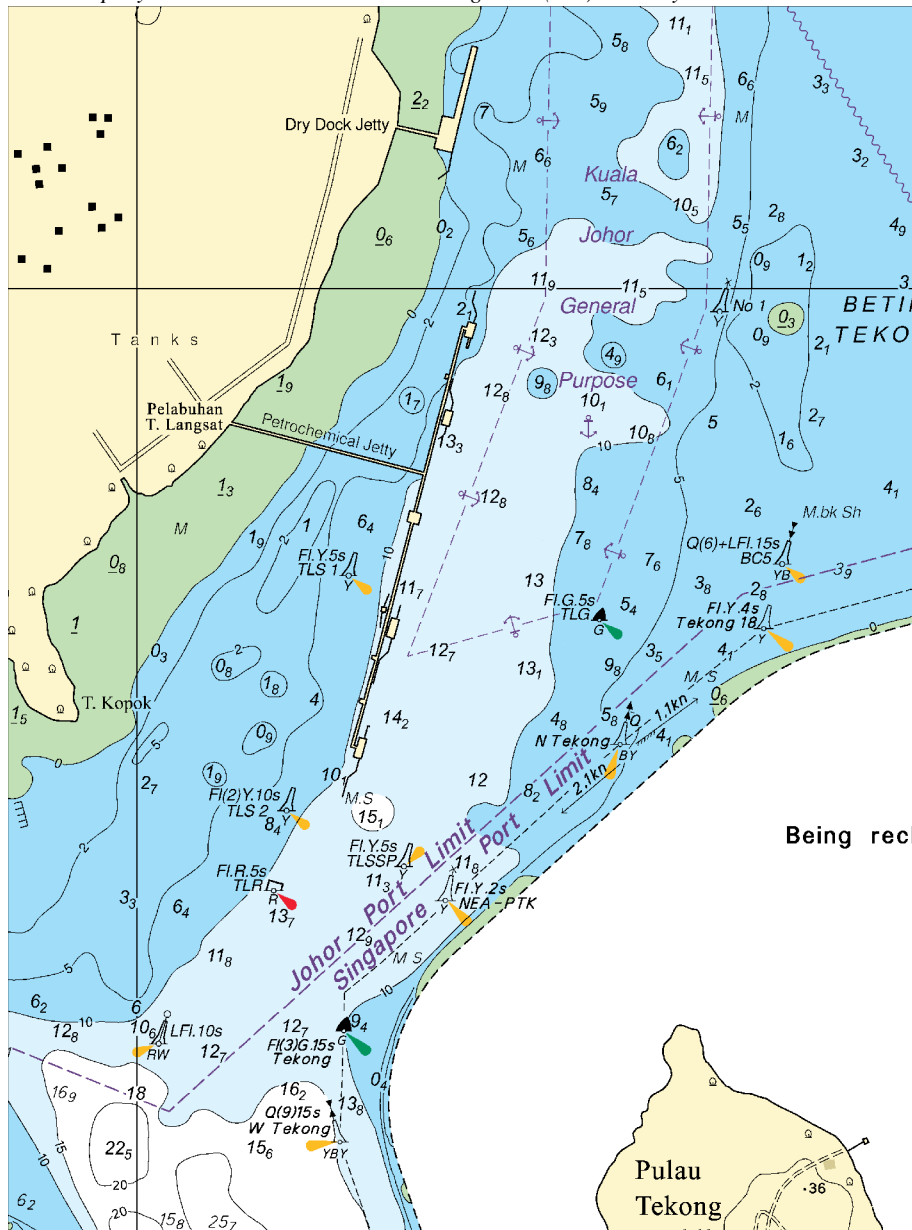
Chart 4044 [previous update New Edition 15/06/2017] WGS84 DATUM

Insert	the accompanying block, centred on:	1°26·3'N 104°00·7'E
--------	-------------------------------------	---------------------

Updated to Admiralty Notices to Mariners No. 30 of 2017 dated 27th July 2017

Block for Chart No 4043

To accompany Notice to Mariners 3365/17. Image Size (mm) 162.2 by 120.6



HYDROGRAPHIC NOTE - Instructions

1. Mariners are requested to notify the Chief Hydrographer, Maritime and Port Authority of Singapore, when new or suspected dangers to navigation are discovered, changes are observed in aids to navigation or where corrections to nautical publications may be necessary. Reports, which cannot be confirmed or are lacking in certain details should not be withheld.
2. Any ambiguities of time, positioning and depth should be stressed and any firm expectation of being able to check the information provided on a following voyage should be mentioned.
3. Mariners using satellite position fixing systems, eg. GPS, should provide details of equipment and datum used (where applicable). Where bearings (true or magnetic) are taken visually or by radar to fix a position, it should include more than two objects in order to provide a check on its accuracy. A position may also be defined by bearing and distance from a conspicuous object eg. beacon, lighthouse etc.
4. The note should include a tracing or a digital image of the chart used and the details should be clearly marked.
5. Echo sounders frequently register greater depths than the advertised maximum depth for the equipment, eg. a trace appearing at 50 metres may be in fact be 550 metres or even 1050 metres for equipment whose maximum depth is 500 metres. Erroneous depths caused by 2nd transmission error can usually be recognised by the following:
 - (a) the tracing being weaker than normal for the depth registered,
 - (b) the trace appearing to pass through the transmission line,
 - (c) the feathery nature of the trace.
6. Upon receipt of a hydrographic note, a Notice to Mariners may be issued. The sender's vessel or name is quoted as the source unless the same information is also received in foreign Notices to Mariners.
7. Reports of shoals, uncharted dangers and defects in aids to navigation may also be made to the appropriate Singapore Port Operations Control Centre on VHF Channels 10, 12, 14, 68 or 73.

HYDROGRAPHIC NOTE

To:

Chief Hydrographer
Maritime and Port Authority of Singapore
7B Keppel Road #20-00 Tanjong Pagar Complex
Singapore 089055

Tel : (65) 6325 2027
Fax : (65) 6226 1076
Email : hydrographic@mpa.gov.sg

Sender's Contact Details :

Date :

Name of Vessel :

Address of Sender :

Tel : Fax :

Email :

Nature of Observation :

General Location :

Subject :

Position : Lat. Long.

Charts Used :

Date & Time of Observation :

Details :
.....
.....

Attachment :

Equipment Used :

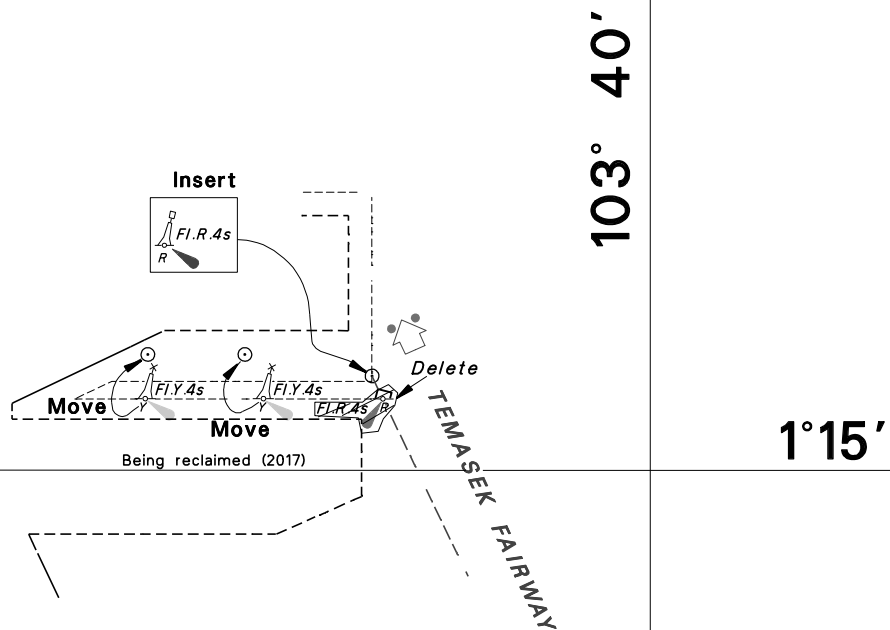
Type of Position Fixing : GPS / DGPS Others :

Type of Echo Sounder :

Name and Signature :

Ship's/Company's Stamp :

NOTICES TO MARINERS TRACINGS



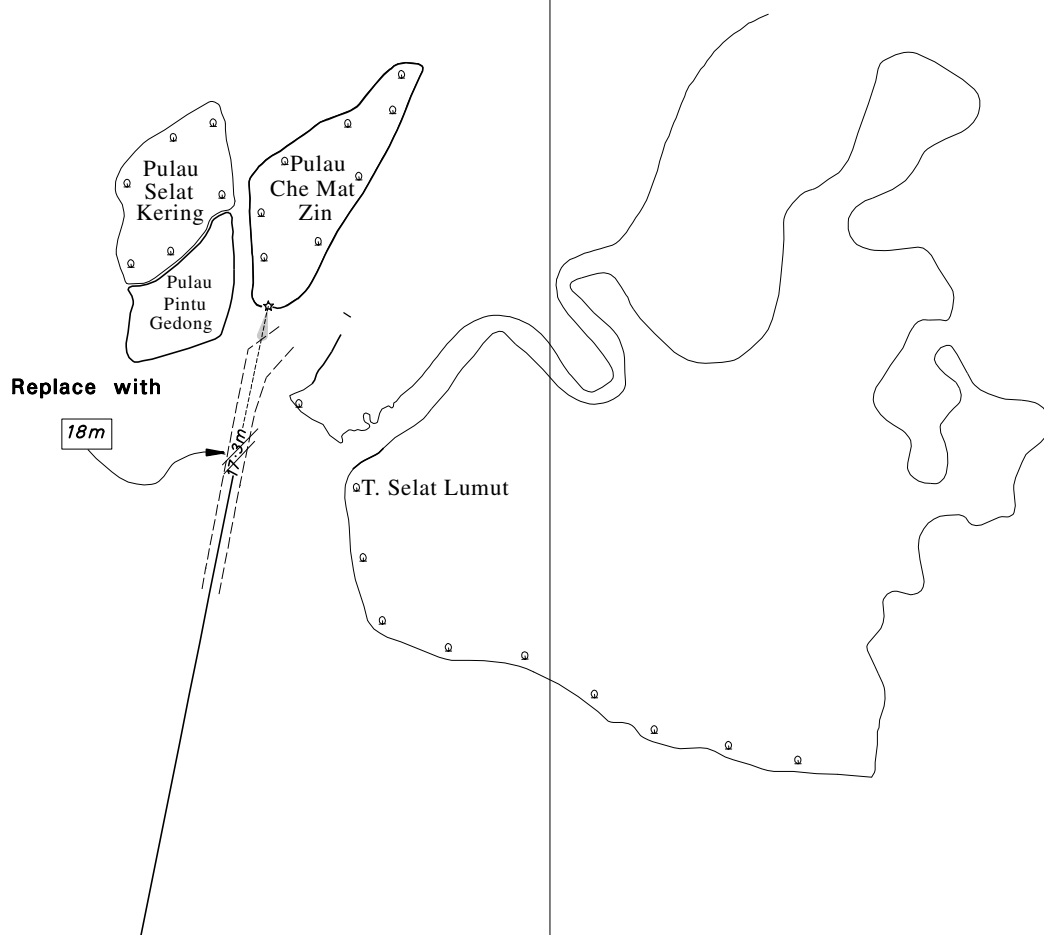
CORRECTION NO.	SNM EDN NO.	LAST CORR NO.	CHART NO.	Location on Chart		
70	8/2017	64/17	GSP1/SP1	X		

Caution: some computer printers might distort the tracings.
Users are advised to check and, if necessary, adjust settings on the printer

NOTICES TO MARINERS TRACINGS

101°20'

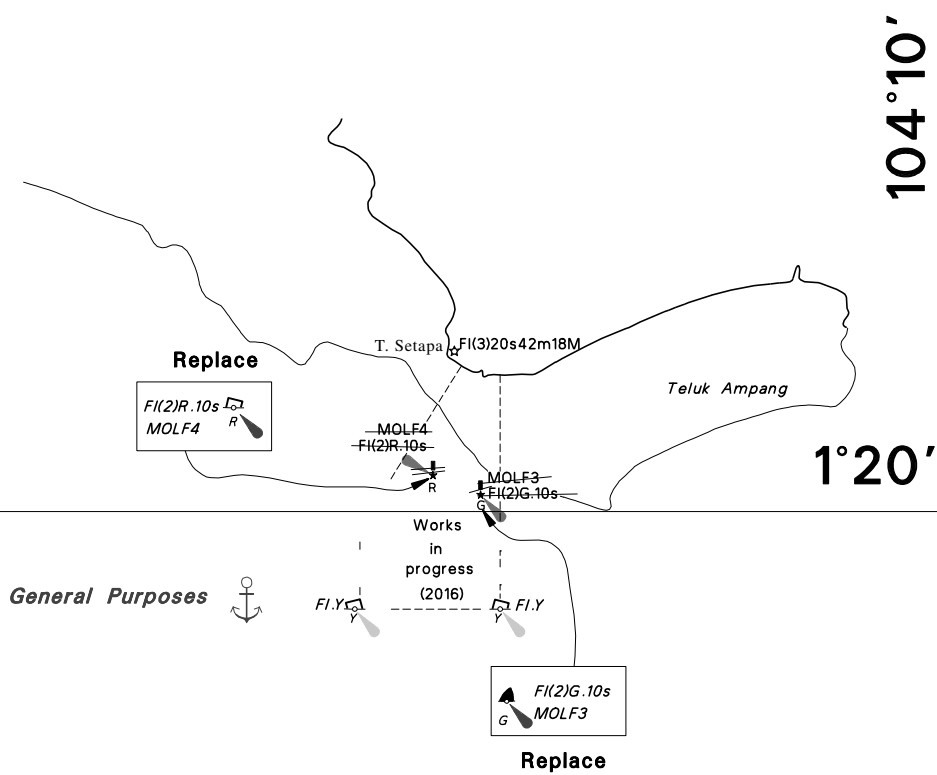
3°00'



CORRECTION NO.	SNM EDN NO.	LAST CORR NO.	CHART NO.	Location on Chart		
					X	
71	8/2017	65/2017	200			

Caution: some computer printers might distort the tracings.
Users are advised to check and, if necessary, adjust settings on the printer

NOTICES TO MARINERS TRACINGS



CORRECTION NO.	SNM EDN NO.	LAST CORR NO.	CHART NO.	Location on Chart		
					X	
72	8/2017	66/2017	502			

Caution: some computer printers might distort the tracings.
Users are advised to check and, if necessary, adjust settings on the printer