



SINGAPOREAN NOTICES TO MARINERS

SECTION	CONTENT	Page
I	Affected Charts & Publications	1
II	New Charts & Publications	3
	Notices to Mariners and Chart Corrections	13
	Temporary and Preliminary Notices	15
III	Navigational Information	16
	Amendments to Publications	17
IV	Reprint of Maritime Safety Information	18
V	Extract of Admiralty Notices to Mariners for Dual-Badged Charts	20

The monthly Notices to Mariners contain information required to keep charts and publications published by the Hydrographic Department, Maritime and Port Authority of Singapore up-to-date.

Mariners are requested to notify the Chief Hydrographer, Maritime and Port Authority of Singapore, immediately of the discovery of new or suspected dangers to navigation, observed changes to aids to navigation and ways Singaporean Charts and Publications can be improved. The Hydrographic Note on the back page should be used for this purpose.

Detailed information of charts and publications (coverage of charts, latest editions and distributors) are available on the Maritime and Port Authority Website: www.mpa.gov.sg

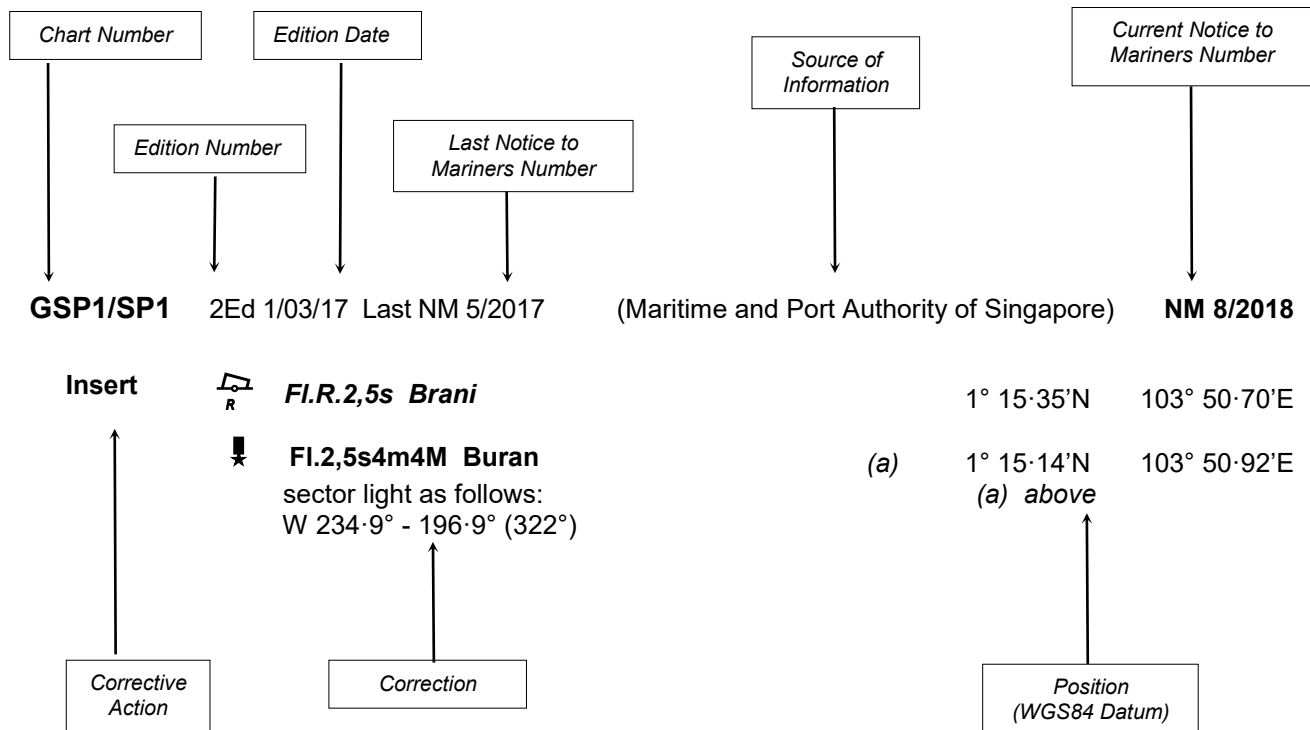
- [Singaporean Notice to Mariners](#)
- [Singaporean Charts](#)
- [Dual-Badged Charts](#)
- [Singapore ENC](#)
- [Malacca and Singapore Straits ENC](#)
- [Singapore Port Information](#)
- [Singapore Tide Tables](#)

Contact information:

Hydrographic Department
Maritime and Port Authority of Singapore
7B Keppel Road
#20-00 Tanjong Pagar Complex
Singapore 089055
Tel : (65) 6325 2027
Fax : (65) 6226 1076
Email : hydrographic@mpa.gov.sg

EXPLANATION OF FORMAT

The elements of a typical chart correction are explained below.



Notes:

- a) Notice to Mariners number followed by:
T indicates a Temporary Notice (eg. **NM 9T/2018**).
P indicates a Preliminary Notice (eg. **NM 10P/2018**).
- b) Bearings are true reckoned clockwise from 000° to 359°; those relating to lights are from seaward.
- c) Heights and elevations are above Mean High Water Springs.

I
AFFECTED CHARTS AND PUBLICATIONS

INDEX OF AFFECTED CHARTS

DESCRIPTION	NOTICE NO.	PAGE NO.
New Charts and Publications	-	3 to 12
Singaporean Chart GSP1/SP1	*60, *61, *62, *63	13
Singaporean Chart 200	64	13
Singaporean Chart 500	*61, *62	13, 14
Singaporean Chart 501	*61, *62, *63	14
Singaporean Chart 502	*60, *63	14
Temporary and Preliminary Notices	-	15
Singapore Port Marine Notices/Circulars	*65	16
Amendments to Publications	*66	17
Reprint of Maritime Safety Information	-	18, 19
Extract of Admiralty Notices to Mariners for Dual-Badged Charts	-	20, 21

*Source: Maritime and Port Authority of Singapore

I
AFFECTED CHARTS AND PUBLICATIONS

INDEX OF NOTICES

NOTICE NO.	DESCRIPTION	PAGE NO.
-	New Charts and Publications	3 to 12
*60, *61, *62, *63	Singaporean Chart GSP1/SP1	13
64	Singaporean Chart 200	13
*61, *62	Singaporean Chart 500	13, 14
*61, *62, *63	Singaporean Chart 501	14
*60, *63	Singaporean Chart 502	14
-	Temporary and Preliminary Notices	15
*65	Singapore Port Marine Notices/Circulars	16
*66	Amendments to Publications	17
-	Reprint of Maritime Safety Information	18, 19
-	Extract of Admiralty Notices to Mariners for Dual-Badged Charts	20, 21

*Source: Maritime and Port Authority of Singapore

II NEW CHARTS AND PUBLICATIONS

NEW EDITION DUAL BADGED CHARTS TO BE PUBLISHED ON 20TH SEPTEMBER 2018

Chart Number	:	4030
Title	:	Port of Singapore West Jurong Anchorages and Temasek Fairway
Coverage	:	Lat 01° 11·05' N 01° 17·00' N Long 103° 36·70' E 103° 40·70' E
Scale	:	1 : 10 000
Date Published	:	20 th September 2018
Size of Chart	:	742.0 x 1096.5 mm
Description	:	This new edition includes updated submarine cables, bathymetry and topography details covering West Jurong Anchorages and Temasek Fairway. The existing chart of the same number published on 2 nd March 2017 will be superseded.

Chart Number	:	4031
Title	:	Port of Singapore Western Approaches to Jurong Island
Coverage	:	Lat 01° 10·15' N 01° 16·12' N Long 103° 38·50' E 103° 42·53' E
Scale	:	1 : 10 000
Date Published	:	20 th September 2018
Size of Chart	:	747.5 x 1100.2 mm
Description	:	This new edition includes updated submarine cables, bathymetry and topography details covering Western Approaches to Jurong Island. The existing chart of the same number published on 2 nd March 2017 will be superseded.

II NEW CHARTS AND PUBLICATIONS

NEW EDITION DUAL BADGED CHARTS TO BE PUBLISHED ON 20TH SEPTEMBER 2018

Chart Number	:	4032
Title	:	Port of Singapore Sinki Fairway
Coverage	:	Lat 01° 12-25' N 01° 16-30' N Long 103° 40-20' E 103° 46-13' E
Scale	:	1 : 10 000
Date Published	:	20 th September 2018
Size of Chart	:	1100.0 x 746.4 mm
Description	:	This new edition includes updated submarine cables, bathymetry and topography details covering Sinki Fairway. The existing chart of the same number published on 4 th August 2016 will be superseded.

Chart Number	:	4033
Title	:	Port of Singapore Tuas Bay, West Jurong Channel and Pesek Basin
Coverage	:	Lat 01° 15-00' N 01° 19-05' N Long 103° 36-80' E 103° 42-70' E
Scale	:	1 : 10 000
Date Published	:	20 th September 2018
Size of Chart	:	1094.4 x 746.4 mm
Description	:	This new edition includes updated submarine cables, bathymetry and topography details covering Tuas Bay, West Jurong Channel and Pesek Basin. The existing chart of the same number published on 17 th March 2016 will be superseded.

II NEW CHARTS AND PUBLICATIONS

NEW EDITION DUAL BADGED CHARTS TO BE PUBLISHED ON 20TH SEPTEMBER 2018

Chart Number	:	4034
Title	:	Port of Singapore East Jurong Channel, Pasir Panjang Terminal and West Keppel Fairway
Coverage	:	Lat 01° 14·50' N 01° 18·55' N Long 103° 42·70' E 103° 48·60' E
Scale	:	1 : 10 000
Date Published	:	20 th September 2018
Size of Chart	:	1094.3 x 746.3 mm
Description	:	This new edition includes updated submarine cables, bathymetry and topography details covering East Jurong Channel, Pasir Panjang Terminal and West Keppel Fairway. The existing chart of the same number published on 4 th August 2016 will be superseded.

Chart Number	:	4035
Title	:	Port of Singapore Western Anchorages, Jong Fairway and Cruise Bay
Coverage	:	Lat 01° 10·90' N 01° 16·90' N Long 103° 45·50' E 103° 49·54' E
Scale	:	1 : 10 000
Date Published	:	20 th September 2018
Size of Chart	:	749.4 x 1105.7 mm
Description	:	This new edition includes updated submarine cables, bathymetry and topography details covering Western Anchorage, Jong Fairway and Cruise Bay. The existing chart of the same number published on 6 th April 2017 will be superseded.

II NEW CHARTS AND PUBLICATIONS

NEW EDITION DUAL BADGED CHARTS TO BE PUBLISHED ON 20TH SEPTEMBER 2018

Chart Number	:	4036
Title	:	Port of Singapore Raffles Lighthouse to The Sisters
Coverage	:	Lat 01° 09·40' N 01° 13·47' N Long 103° 44·20' E 103° 50·13' E
Scale	:	1 : 10 000
Date Published	:	20 th September 2018
Size of Chart	:	1100.0 x 750.1 mm
Description	:	This new edition includes updated submarine cables, bathymetry and topography details covering Raffles Lighthouse to The Sisters. The existing chart of the same number published on 6 th April 2017 will be superseded.

Chart Number	:	4037
Title	:	Port of Singapore Keppel Harbour, Tanjong Pagar Terminal and Approaches
Coverage	:	Lat 01° 12·52' N 01° 16·59' N Long 103° 49·40' E 103° 55·34' E
Scale	:	1 : 10 000
Date Published	:	20 th September 2018
Size of Chart	:	747.5 x 1100.2 mm
Description	:	This new edition includes updated submarine cables, bathymetry and topography details covering Keppel Harbour, Tanjong Pagar Terminal and Approaches. The existing chart of the same number published on 6 th April 2017 will be superseded.

II NEW CHARTS AND PUBLICATIONS

NEW EDITION SINGAPORE ENC TO BE RELEASED ON 20TH SEPTEMBER 2018

ENC Name	:	SG5C4030
Location	:	West Jurong Anchorages and Temasek Fairway
Coverage	:	Lat 01° 11·050' N 01° 16·300' N Long 103° 36·700' E 103° 40·640' E
Compilation Scale	:	1 : 8 000
Date Released	:	20 th September 2018
Description	:	This new edition includes updated submarine cables, bathymetry and topography details covering West Jurong Anchorages and Temasek Fairway. The existing cell of the same name released on 2 nd March 2017 will be superseded.

ENC Name	:	SG5C4031
Location	:	Western Approaches to Jurong Island
Coverage	:	Lat 01° 10·150' N 01° 12·250' N Long 103° 38·500' E 103° 42·530' E
Compilation Scale	:	1 : 8 000
Date Released	:	20 th September 2018
Description	:	This new edition includes updated submarine cables, bathymetry and topography details covering Western Approaches to Jurong Island. The existing cell of the same name released on 17 th March 2016 will be superseded.

ENC Name	:	SG5C4032
Location	:	Sinki Fairway
Coverage	:	Lat 01° 12·250' N 01° 16·300' N Long 103° 40·640' E 103° 45·580' E
Compilation Scale	:	1 : 8 000
Date Released	:	20 th September 2018
Description	:	This new edition includes updated submarine cables, bathymetry and topography details covering Sinki Fairway. The existing cell of the same name released on 4 th August 2016 will be superseded.

II NEW CHARTS AND PUBLICATIONS

NEW EDITION SINGAPORE ENC TO BE RELEASED ON 20TH SEPTEMBER 2018

ENC Name	:	SG5C4033
Location	:	Tuas Bay, West Jurong Channel and Pesek Basin
Coverage	:	Lat 01° 16·300' N 01° 19·050' N Long 103° 38·000' E 103° 42·700' E
Compilation Scale	:	1 : 8 000
Date Released	:	20 th September 2018
Description	:	This new edition includes updated submarine cables, bathymetry and topography details covering Tuas Bay, West Jurong Channel and Pesek Basin. The existing cell of the same name released on 17 th March 2016 will be superseded.

ENC Name	:	SG5C4034
Location	:	East Jurong Channel, Pasir Panjang Terminal and West Keppel Fairway
Coverage	:	Lat 01° 16·300' N 01° 18·550' N Long 103° 42·700' E 103° 46·360' E
Compilation Scale	:	1 : 8 000
Date Released	:	20 th September 2018
Description	:	This new edition includes updated submarine cables, bathymetry and topography details covering East Jurong Channel, Pasir Panjang Terminal and West Keppel Fairway. The existing cell of the same name released on 4 th August 2016 will be superseded.

ENC Name	:	SG5C4035
Location	:	West Jurong Anchorages, Jong Fairway and Cruise Bay
Coverage	:	Lat 01° 10·900' N 01° 16·900' N Long 103° 45·580' E 103° 49·425' E
Compilation Scale	:	1 : 8 000
Date Released	:	20 th September 2018
Description	:	This new edition includes updated submarine cables, bathymetry and topography details covering West Jurong Anchorages, Jong Fairway and Cruise Bay. The existing cell of the same name released on 6 th April 2017 will be superseded.

II NEW CHARTS AND PUBLICATIONS

NEW EDITION SINGAPORE ENC TO BE RELEASED ON 20TH SEPTEMBER 2018

ENC Name	:	SG5C4036
Location	:	Raffles Lighthouse to The Sisters
Coverage	:	Lat 01° 09·400' N 01° 12·520' N Long 103° 44·200' E 103° 50·130' E
Compilation Scale	:	1 : 8 000
Date Released	:	20 th September 2018
Description	:	This new edition includes updated submarine cables, bathymetry and topography details covering Raffles Lighthouse to The Sisters. The existing cell of the same name released on 6 th April 2017 will be superseded.

ENC Name	:	SG5C4037
Location	:	Keppel Harbour, Tanjong Pagar Terminal and Approaches
Coverage	:	Lat 01° 12·520' N 01° 16·590' N Long 103° 49·425' E 103° 55·340' E
Compilation Scale	:	1 : 8 000
Date Released	:	20 th September 2018
Description	:	This new edition includes updated submarine cables, bathymetry and topography details covering Keppel Harbour, Tanjong Pagar Terminal and Approaches. The existing cell of the same name released on 6 th April 2017 will be superseded.

II NEW CHARTS AND PUBLICATIONS

SINGAPORE TIDE TABLES YEAR 2019 TO BE PUBLISHED ON 15TH SEPTEMBER 2018

Summary of Publication

This publication contains Tidal Height and Tidal Stream Predictions covering stations in Singapore Port Waters and along the Straits of Malacca and Singapore.

This publication consists of 5 segments.

1. **High and Low Water Predictions** at the following stations:
 - a) Tanjong Pagar
 - b) Sembawang

2. **Hourly Tidal Height Predictions** at the following stations:
 - a) West Tuas
 - b) Sultan Shoal Lighthouse
 - c) Raffles Lighthouse
 - d) West Coast
 - e) Bukom
 - f) Tanjong Pagar
 - g) Tanah Merah
 - h) Tanjong Changi
 - i) Sembawang
 - j) Singapore Strait - Horsburgh Lighthouse

3. **Hourly Tidal Stream Predictions** at the following stations:
 - a) Main Strait - off Tuas View
 - b) Sinki Fairway - Banyan
 - c) Jong Fairway - off Sisters Buoy
 - d) Main Strait - off Shell SBM Buoy
 - e) Sentosa - off Cruise Bay
 - f) East Buran
 - g) Main Strait - Eastern Petroleum A
 - h) Kuala Johor - off Malang Tiga

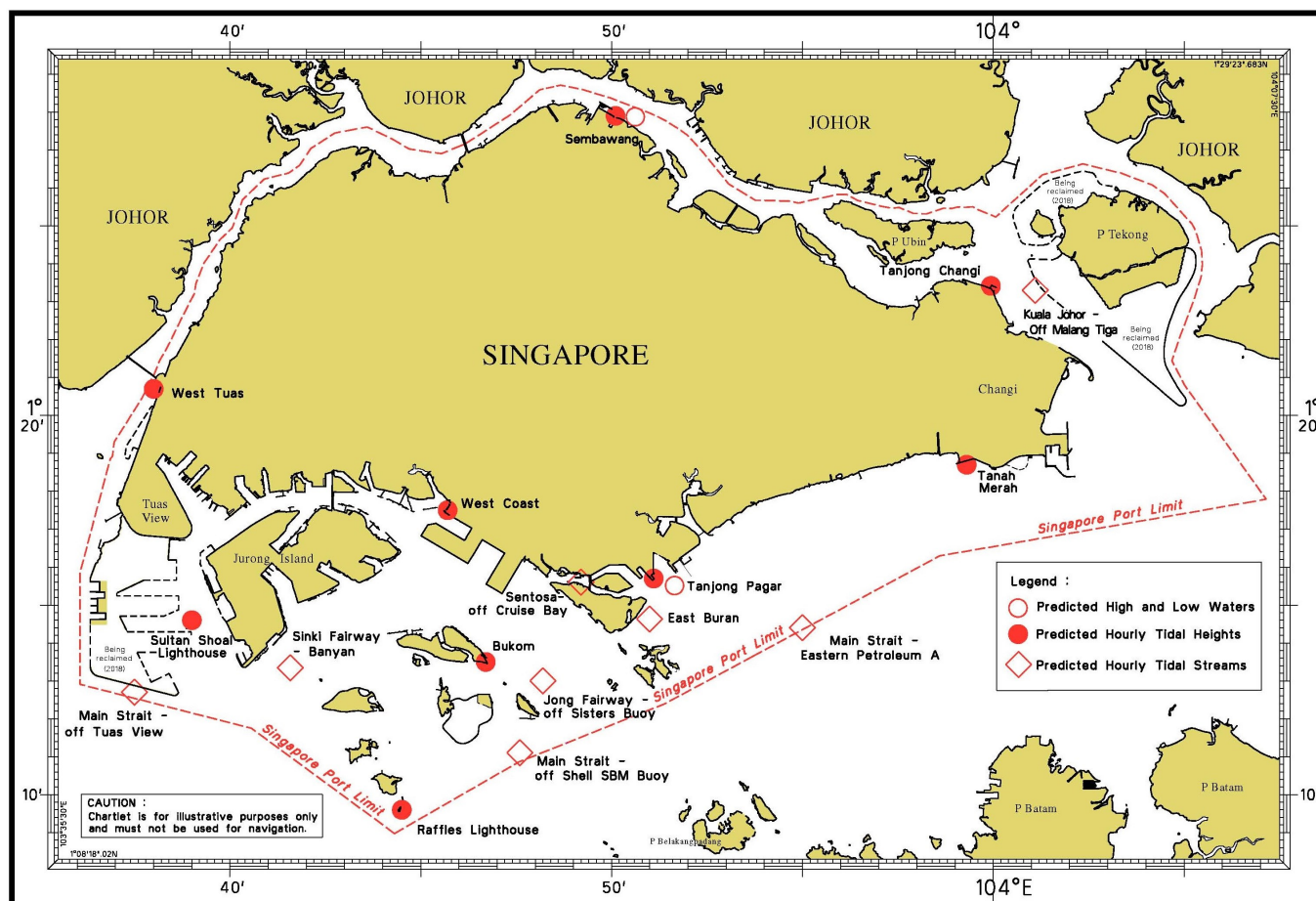
4. **Maximum and Slack Tidal Stream Predictions** at the following stations:
 - a) Malacca Strait - off Pulau Iyu Kecil Light
 - b) Singapore Strait - Selat Phillip
 - c) Singapore Strait - Karang Banteng (Buffalo Rock)
 - d) Singapore Strait - Horsburgh Lighthouse

5. **Malacca Strait - High and Low Water Predictions** at the following stations:
 - a) Kedah Pier, Pulau Pinang
 - b) Port Dickson
 - c) Kuala Batu Pahat

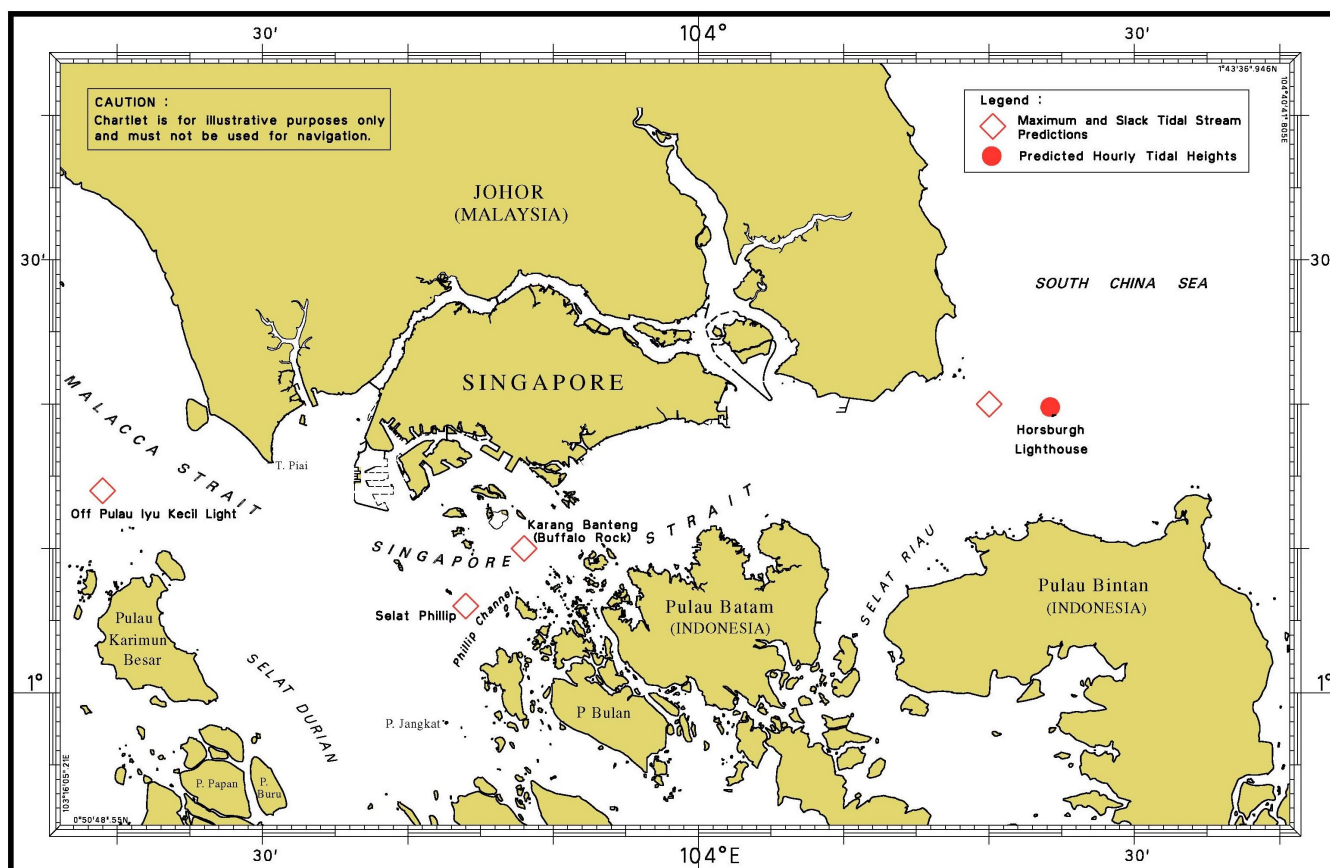
The locations of the above stations are shown in the chartlets below:

II NEW CHARTS AND PUBLICATIONS

Tidal Prediction Stations within Singapore Port Waters

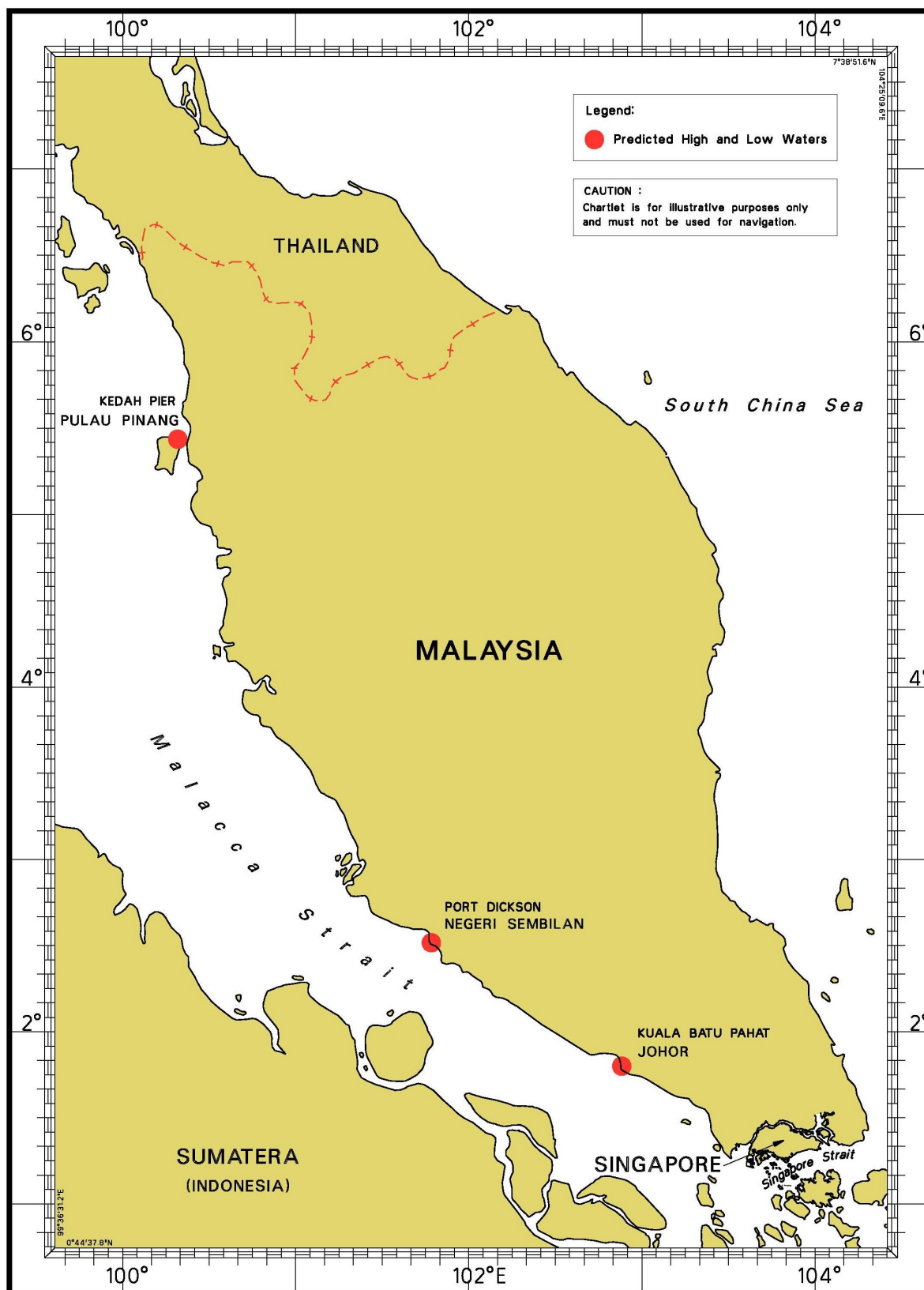


Tidal Prediction Stations in Straits of Malacca and Singapore



II NEW CHARTS AND PUBLICATIONS

Tidal Prediction Stations In Malacca Strait








This publication can be purchased from any of the MPA appointed Chart Distributors.

Information on the MPA appointed Chart Distributors can be found from the following link:

<http://www.mpa.gov.sg/web/portal/home/media-centre/publications/singapore-tide-tables>





II

NOTICES TO MARINERS AND CHART CORRECTIONS

GSP1/SP1	3 Ed 15/1/18 Last NM 58/2018	(Maritime and Port Authority of Singapore)	NM 60/2018
Insert	breakwater, single firm line, joining:	(a) 1°18·63'N	103°59·21'E
		(b) 1°18·68'N	103°59·37'E
	 Fl.Y.2,5s4m7M TMFT-1	(a) above	
	 Fl.Y.2,5s4m7M TMFT-3	(b) above	
		(Maritime and Port Authority of Singapore)	NM 61/2018
Delete	limit of working area, pecked line, joining:	1°16·30'N	103°38·71'E
		1°15·44'N	103°38·71'E
Insert	limit of fairway, pecked line, joining:	1°16·30'N	103°38·71'E
		1°15·44'N	103°38·71'E
		(Maritime and Port Authority of Singapore)	NM 62/2018
Insert	limit of working area, pecked line, joining	1°15·71'N	103°38·71'E
		1°15·71'N	103°38·78'E
		1°15·71'N	103°38·85'E
		1°15·27'N	103°39·03'E
		1°15·16'N	103°39·13'E
		1°14·63'N	103°39·34'E
		1°14·42'N	103°39·37'E
		1°13·16'N	103°39·88'E
		1°13·03'N	103°39·52'E
		1°13·12'N	103°39·48'E
		(Maritime and Port Authority of Singapore)	NM 63/2018
Delete		1°13·51'N	103°51·68'E
<hr/>			
200	4 Ed 1/9/15 Last NM 43/2018	(Malaysia Marine Department Notice No. 68/2018)	NM 64/2018
Insert	 Fl.G.4s5M	(a) 2°48·08'N	101°24·26'E
Delete	 Fl.G.5s4m8M close W of:	(a) above	
<hr/>			
500	8 Ed 15/9/17 Last NM 51/2018	(Maritime and Port Authority of Singapore)	NM 61/2018
Delete	limit of working area, pecked line, joining:	1°16·30'N	103°38·71'E
		1°15·44'N	103°38·71'E
Insert	limit of fairway, pecked line, joining:	1°16·30'N	103°38·71'E
		1°15·44'N	103°38·71'E

II

NOTICES TO MARINERS AND CHART CORRECTIONS

		(Maritime and Port Authority of Singapore)	NM 62/2018
Insert	limit of working area, pecked line, joining	1°15·71'N 1°15·71'N 1°15·71'N 1°15·27'N 1°15·16'N 1°14·63'N 1°14·42'N 1°13·16'N 1°13·03'N 1°13·12'N	103°38·71'E 103°38·78'E 103°38·85'E 103°39·03'E 103°39·13'E 103°39·34'E 103°39·37'E 103°39·88'E 103°39·52'E 103°39·48'E
501	7 Ed 1/9/15 Last NM 51/2018	(Maritime and Port Authority of Singapore)	NM 61/2018
Delete	limit of working area, pecked line, joining:	1°16·00'N (chart border) 1°15·44'N	103°38·71'E 103°38·71'E
Insert	limit of fairway, pecked line, joining:	1°16·00'N (chart border) 1°15·44'N	103°38·71'E 103°38·71'E
		(Maritime and Port Authority of Singapore)	NM 62/2018
Insert	limit of working area, pecked line, joining	1°15·71'N 1°15·71'N 1°15·71'N 1°15·27'N 1°15·16'N 1°14·63'N 1°14·42'N 1°13·16'N 1°13·03'N 1°13·12'N	103°38·71'E 103°38·78'E 103°38·85'E 103°39·03'E 103°39·13'E 103°39·34'E 103°39·37'E 103°39·88'E 103°39·52'E 103°39·48'E
		(Maritime and Port Authority of Singapore)	NM 63/2018
Delete		1°13·51'N	103°51·68'E
502	7 Ed 1/9/15 Last NM 33/2018	(Maritime and Port Authority of Singapore)	NM 60/2018
Insert	breakwater, single firm line, joining:	(a) 1°18·63'N (b) 1°18·68'N	103°59·21'E 103°59·37'E
	 Fl.Y.2,5s4m7M TMFT-1	(a) above	
	 Fl.Y.2,5s4m7M TMFT-3	(b) above	
		(Maritime and Port Authority of Singapore)	NM 63/2018
Delete		1°13·51'N	103°51·68'E

II

TEMPORARY AND PRELIMINARY NOTICES

NIL

III NAVIGATIONAL INFORMATION

*(NM 65/2018)

SINGAPORE PORT MARINE NOTICES/CIRCULARS

The Port Marine Notices/Circulars shortlisted below would be of particular interest to Mariners. Details and complete list of Port Marine Notices/Circulars are available at this link:

<http://www.mpa.gov.sg/web/portal/home/port-of-singapore/circulars-and-notices>

PMN No.**Subject**

65/2018	Transport of sand material to stockpile area at Tuas View Extension
66/2018	Prohibition on vessels anchoring and entry into the demarcated area at Eastern Anchorage for RSAF 50
67/2018	Installation of artificial reef at Sisters Island Marine Reserve
69/2018	MPA Port Dues refunds
72/2018	Works at Tuas Terminal Phase 2
74/2018	Drilling and blasting works in the Temasek Fairway
75/2018	Dredging works near Denman Shoal
76/2018	Dredging works off Petrochemical Corporation of Singapore (PCS) Terminal Berth No. 6

PMC No.**Subject**

7/2018	Maritime and Port Authority of Singapore revokes Pegasus Maritime (s) Pte Ltd's bunker craft operator license
--------	---

*Source: Maritime and Port Authority of Singapore

III AMENDMENTS TO PUBLICATIONS

*(NM 66/2018) UPDATING OF PUBLICATION “SINGAPORE PORT INFORMATION 2018/2019”

CHARACTERISTICS OF AIDS TO NAVIGATION

1. Page 132

TUAS VIEW EXTENSION

Amend the following:

Name Of Beacon/Buoy	Position Lat. N Long. E	Structure, Colour & Shape	Light Characteristic	Owner
HVB-8A Buoy	01°15.860' 103°36.290'	Green Conical	Fl.G.4s	China Harbour

Amend the following:

Name Of Beacon/Buoy	Position Lat. N Long. E	Structure, Colour & Shape	Light Characteristic	Owner
F2-DDJV-4 Buoy	01°14.096' 103°39.413'	Red pillar with can topmark	Fl(3)R.15s	DIAP-DAELIM Joint Venture

2. Page 153

CHANGI EAST

Insert the following:

Name Of Beacon/Buoy	Position Lat. N Long. E	Structure, Colour & Shape	Light Characteristic	Owner
TMFT-1 Beacon	01°18.634' 103°59.213'	Yellow pillar with 'X' topmark	Fl.Y.2,5s4m7M (sync)	MPA
TMFT-2 Beacon	01°18.658' 103°59.291'	Yellow pillar with 'X' topmark	Fl.Y.2,5s4m7M (sync)	MPA
TMFT-3 Beacon	01°18.681' 103°59.367'	Yellow pillar with 'X' topmark	Fl.Y.2,5s4m7M (sync)	MPA

*Source: Maritime and Port Authority of Singapore

IV

REPRINT OF MARITIME SAFETY INFORMATION

The following Maritime Safety Information have been shortlisted, as they would be of particular interest to mariners.

TT175

VESSELS IN EAST JOHOR STRAIT ARE ADVISED TO NAVIGATE WITH PARTICULAR ALERTNESS AND CAUTION WHEN NEAR THE PROJECT AREAS OFF PULAU TEKONG, CHANGI AND MALANG PAPAN AS SHALLOW WATER AREAS EXIST. VESSELS ARE REMINDED TO PROCEED AT A SAFE SPEED AND MAINTAIN A PROPER LOOKOUT, PARTICULARLY FOR TUGS AND BARGES NAVIGATING NEAR THE PROJECT AREAS AND PASSENGER FERRIES CROSSING BETWEEN CHANGI AND PULAU TEKONG AND VICINITY OF PASIR GUDANG.

TT273

ALL VESSELS ARE ADVISED TO NAVIGATE WITH CAUTION, COMPLY WITH THE COLREGS, MAINTAIN VHF RADIO WATCH AND LISTEN TO TRAFFIC INFORMATION WHEN NAVIGATING IN THE SINGAPORE STRAIT AND PORT WATERS. MARINERS ARE ALSO ADVISED TO KEEP A GOOD LOOKOUT OF FREQUENT FERRIES CROSSING THE SINGAPORE STRAIT.

TT363

MARINERS ARE REMINDED NOT TO ANCHOR IN ALL AREAS IN THE TSS, INCLUDING PRECAUTIONARY AREAS OF THE STRAITS OF MALACCA AND SINGAPORE AS WELL AS BETWEEN THE LANDWARD LIMITS OF THE TSS AND APPROACHES TO THE PORTS. VESSELS ENTERING ANY PORT IN ANY LITTORAL STATES ARE TO ANCHOR IN THE ANCHORAGES DESIGNATED BY THE RESPECTIVE LITTORAL STATES ONLY.

TT399

VESSELS ARRIVING TO SINGAPORE OR TRANSITING THROUGH THE STRAIT ARE RECOMMENDED TO UPDATE THEIR DESTINATION ACCURATELY IN THE AIS TO ENHANCE SITUATIONAL AWARENESS FOR OTHER TRAFFIC IN THE VICINITY. EXAMPLE: SG-PEBGB FOR PILOT EASTERN BOARDING GROUND BRAVO.

TT418

WEST BOUND DEEP DRAFT VESSELS AND VLCCS ARE REMINDED TO COMPLY WITH THE RULES OF VESSELS NAVIGATING THROUGH THE STRAITS OF MALACCA AND SINGAPORE (SOMS). THEY SHALL ALLOW FOR AN UKC OF AT LEAST 3.5 METRES AT ALL TIMES DURING THE ENTIRE PASSAGE THROUGH THE SOMS AND AS FAR AS IT IS SAFE & PRACTICABLE, PROCEED AT A SPEED OF NOT MORE THAN 12 KTS OVER THE GROUND IN THE WESTBOUND LANE OF THE SINGAPORE STRAIT (BETWEEN SOUTH OF ST JOHN'S ISLAND & RAFFLES LIGHTHOUSE).

THEY ARE ADVISED TO BROADCAST, 8 HOURS BEFORE ENTERING THE TSS, NAVIGATIONAL INFORMATION GIVING NAME, DEADWEIGHT, DRAUGHT, SPEED AND TIMES OF PASSING HORSBURGH LIGHTHOUSE AND RAFFLES LIGHTHOUSE.

TT426

ALL MARINERS ARE REMINDED TO NAVIGATE WITH CAUTION IN THE PRECAUTIONARY AREAS AND TSS, MAINTAIN A GOOD LOOKOUT FOR CROSSING TRAFFIC. VESSELS INTENDING TO CROSS THE TSS SHALL DO SO ONLY WHEN IT IS SAFE AND SHALL AT ALL TIMES COMPLY WITH THE COLLISION REGULATIONS.

TT430 (AMENDED ON 29 DEC 2017 0152Z)

THE FOLLOWING ATONS AIS/RACONS ARE TEMPORARILY REMOVED FOR UPGRADING.

ATONS WITH AIS TEMPORARILY REMOVED FOR UPGRADING:

1. ANGLER BUOY
2. BANYAN BEACON
3. MALANG PAPAN BEACON
4. RASU BUOY
5. RAFFLES LIGHTHOUSE
6. SAKIJANG BEACON
7. SELEGI BEACON

ATONS WITH RACON TEMPORARILY REMOVED FOR UPGRADING:

1. CYRENE BEACON
2. HORSBURGH LIGHTHOUSE
3. RAFFLES LIGHTHOUSE
4. SEREBUT BEACON
5. SULTAN SHOAL LIGHTHOUSE

MARINERS ARE ADVISED TO NAVIGATE WITH CAUTION.

IV

REPRINT OF MARITIME SAFETY INFORMATION

TT437

ALL VESSELS IN SEMBAWANG WHARVES LOCATION ARE TO CHECK YOUR COSPAS-SARSAT SYSTEM AND ENSURE THAT 121.5MHZ IS NOT TRANSMITTED. PLEASE STOP EMITTING YOUR 121.5MHZ DISTRESS ALERT IF YOU ARE NOT IN DISTRESS TO PREVENT INTERFERENCE TO AIRSPACE FREQUENCY.

TT440

A NUMBER OF UNKNOWN VESSELS ARE OBSERVED ANCHORED IN THE TSS/PRECAUTIONARY AREA SOUTH OF TG. RAMUNIA AT APPROXIMATE POSITION 1°17'91"N 104°14'92"E. ALL VESSELS ARE ADVISED TO KEEP A GOOD LOOKOUT AND PROCEED WITH CAUTION WHEN PASSING THIS AREA IN THE SINGAPORE STRAIT.

TT465

DGPS SERVICE AT HORSBURGH LIGHTHOUSE (REFERENCE STATION 130/131) IN POSITION 1°19'8"N 104°24'34"E IS UNAVAILABLE. MARINERS ARE ADVISED TO USE ALTERNATE REFERENCE STATION AT RAFFLES LIGHTHOUSE (REFERENCE STATION 132/133).

TT961

VESSELS INTENDING TO CROSS THE TRAFFIC SEPERATION SCHEME (TSS) OR PRECAUTIONARY AREAS IN THE SINGAPORE STRAIT DURING THE HOURS OF DARKNESS ARE RECOMMENDED TO DISPLAY THE NIGHT SIGNALS CONSISTING OF 3 ALL ROUND GREEN LIGHTS IN A VERTICAL LINE AS DETAILED IN THE MARITIME AND PORT AUTHORITY OF SINGAPORE'S PORT MARINE CIRCULAR, 04 OF 2013 DATED 7 MAY 2013.

SR123

SEA ROBBERIES ARE REPORTED IN THE SINGAPORE STRAIT. ALL VESSELS TO REPORT ANY SUSPICIOUS CRAFT TO VTIS SINGAPORE.

SR419 (AMENDED 281557UTC)

PANPAN 3X ALL SHIPS 3X

SUBJECT - MOB OFF TANJUNG SEPANG

ON 28 JULY 2018 AT 1010HRS, INFORMATION RECEIVED FROM MRSC JOHOR THAT PERSONS WERE REPORTED OVERBOARD FROM A BOAT IN WATERS APPROXIMATELY 1 NM OFF TANJUNG SEPANG, JOHOR, 16 PERSONS MISSING.

ALL VESSELS IN THE VICINITY ARE REQUESTD TO KEEP A SHARP LOOKOUT, RENDER NECESSARY ASSISTANCE, AND REPORT ANY SIGHTINGS TO MRSC JOHOR OR NEAREST COASTAL MALAYSIAN AUTHORITIES FOR FURTHER INSTRUCTION.

ISSUED BY SINGAPORE PORT OPERATIONS CONTROL CENTRE (as at 29th Jul 2018)

V
EXTRACT OF ADMIRALTY NOTICES TO MARINERS
FOR DUAL-BADGED CHARTS






These notices can also be accessed directly from UKHO Website:

<https://www.admiralty.co.uk/maritime-safety-information/admiralty-notices-to-mariners>

3597 SINGAPORE - Maritime limits. Buoyage. Note. Legend.

Source: Maritime and Port Authority of Singapore

Chart 4038 [previous update 2410/18] WGS84 DATUM

Insert	maritime limit, pecked line, joining:	(a)	1°18·35'N	103°36·86'E
		(b)	1°17·50'N	103°36·62'E
		(c)	1°17·44'N	103°36·86'E
		(d)	1°18·29'N	103°37·08'E
	 Fl.Y.2s HD-TWC6		1°17·93'N	103°36·74'E
	 Fl.Y.2s HD-TWC8	(b)	above	
	 Fl.Y.2s HD-TWC9	(c)	above	
	 Fl.Y.2s HD-TWC10		1°17·94'N	103°36·99'E
	the accompanying note, TEMASEK FAIRWAY, centred on:		1°18·88'N	103°39·93'E
	legend, (see Note), oriented NW/SE centred on:		1°14·61'N	103°39·32'E
Delete	former maritime limit, pecked line, joining:	(a)	above	
		(d)	above	
	former  Fl.Y.2s HD-TWC6	(d)	above	

V
EXTRACT OF ADMIRALTY NOTICES TO MARINERS
FOR DUAL-BADGED CHARTS






These notices can also be accessed directly from UKHO Website:

<https://www.admiralty.co.uk/maritime-safety-information/admiralty-notices-to-mariners>

3597 SINGAPORE - Maritime limits. Buoyage. Note. Legend. (continued)

Source: Maritime and Port Authority of Singapore

Chart 4040 [previous update 2941/18] WGS84 DATUM

Insert	maritime limit, pecked line, joining:	(a)	1°18·35'N	103°36·86'E
		(b)	1°17·50'N	103°36·62'E
		(c)	1°17·44'N	103°36·86'E
		(d)	1°18·29'N	103°37·08'E
	 Fl.Y.2s HD-TWC6		1°17·93'N	103°36·74'E
	 Fl.Y.2s HD-TWC8	(b)	above	
	 Fl.Y.2s HD-TWC9	(c)	above	
	 Fl.Y.2s HD-TWC10		1°17·94'N	103°36·99'E
	the accompanying note, TEMASEK FAIRWAY, centred on:		1°17·98'N	103°37·91'E
	legend, (see Note), oriented NW/SE centred on:		1°14·61'N	103°39·34'E
Delete	former maritime limit, pecked line, joining:	(a)	above	
		(d)	above	
	former  Fl.Y.2s HD-TWC6	(d)	above	

Updated to Admiralty Notices to Mariners No. 31 of 2018 dated 2nd August 2018

HYDROGRAPHIC NOTE - Instructions

1. Mariners are requested to notify the Chief Hydrographer, Maritime and Port Authority of Singapore, when new or suspected dangers to navigation are discovered, changes are observed in aids to navigation or where corrections to nautical publications may be necessary. Reports, which cannot be confirmed or are lacking in certain details should not be withheld.
2. Any ambiguities of time, positioning and depth should be stressed and any firm expectation of being able to check the information provided on a following voyage should be mentioned.
3. Mariners using satellite position fixing systems, eg. GPS, should provide details of equipment and datum used (where applicable). Where bearings (true or magnetic) are taken visually or by radar to fix a position, it should include more than two objects in order to provide a check on its accuracy. A position may also be defined by bearing and distance from a conspicuous object eg. beacon, lighthouse etc.
4. The note should include a tracing or a digital image of the chart used and the details should be clearly marked.
5. Echo sounders frequently register greater depths than the advertised maximum depth for the equipment, eg. a trace appearing at 50 metres may be in fact be 550 metres or even 1050 metres for equipment whose maximum depth is 500 metres. Erroneous depths caused by 2nd transmission error can usually be recognised by the following:
 - (a) the tracing being weaker than normal for the depth registered,
 - (b) the trace appearing to pass through the transmission line,
 - (c) the feathery nature of the trace.
6. Upon receipt of a hydrographic note, a Notice to Mariners may be issued. The sender's vessel or name is quoted as the source unless the same information is also received in foreign Notices to Mariners.
7. Reports of shoals, uncharted dangers and defects in aids to navigation may also be made to the appropriate Singapore Port Operations Control Centre on VHF Channels 10, 12, 14, 68 or 73.

HYDROGRAPHIC NOTE

To:

Chief Hydrographer
Maritime and Port Authority of Singapore
7B Keppel Road #20-00 Tanjong Pagar Complex
Singapore 089055

Tel : (65) 6325 2027
Fax : (65) 6226 1076
Email : hydrographic@mpa.gov.sg

Sender's Contact Details :

Date :

Name of Vessel :

Address of Sender :

Tel : Fax :

Email :

Nature of Observation :

General Location :

Subject :

Position : Lat. Long.

Charts Used :

Date & Time of Observation :

Details :

.....

.....

Attachment :

Equipment Used :

Type of Position Fixing : GPS / DGPS Others :

Type of Echo Sounder :

Name and Signature :

Ship's/Company's Stamp :

To accompany Notice to Mariners 3597/18

On Chart 4038

TEMASEK FAIRWAY
(1° 14' 6N., 103° 39' 3E.)

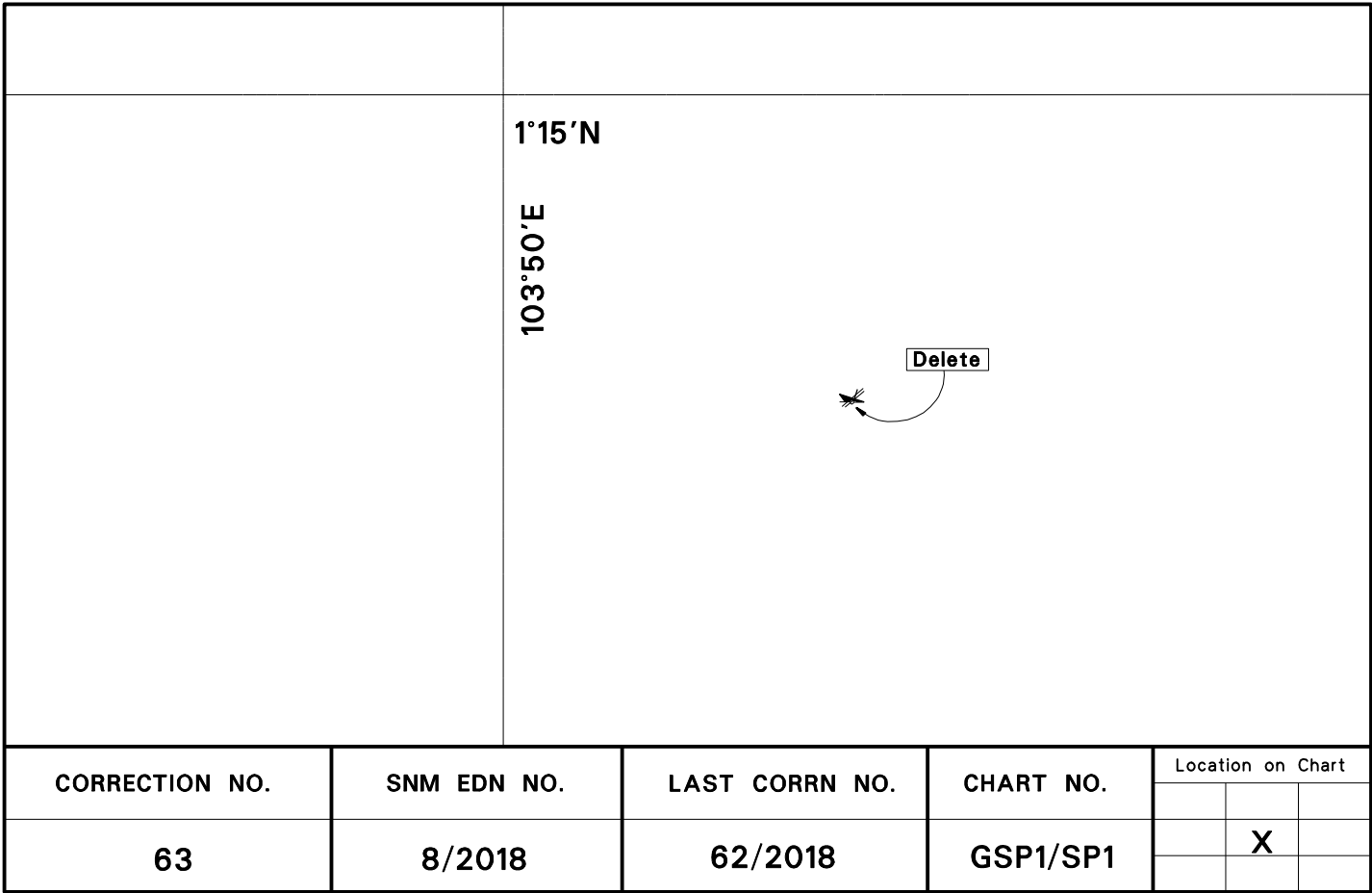
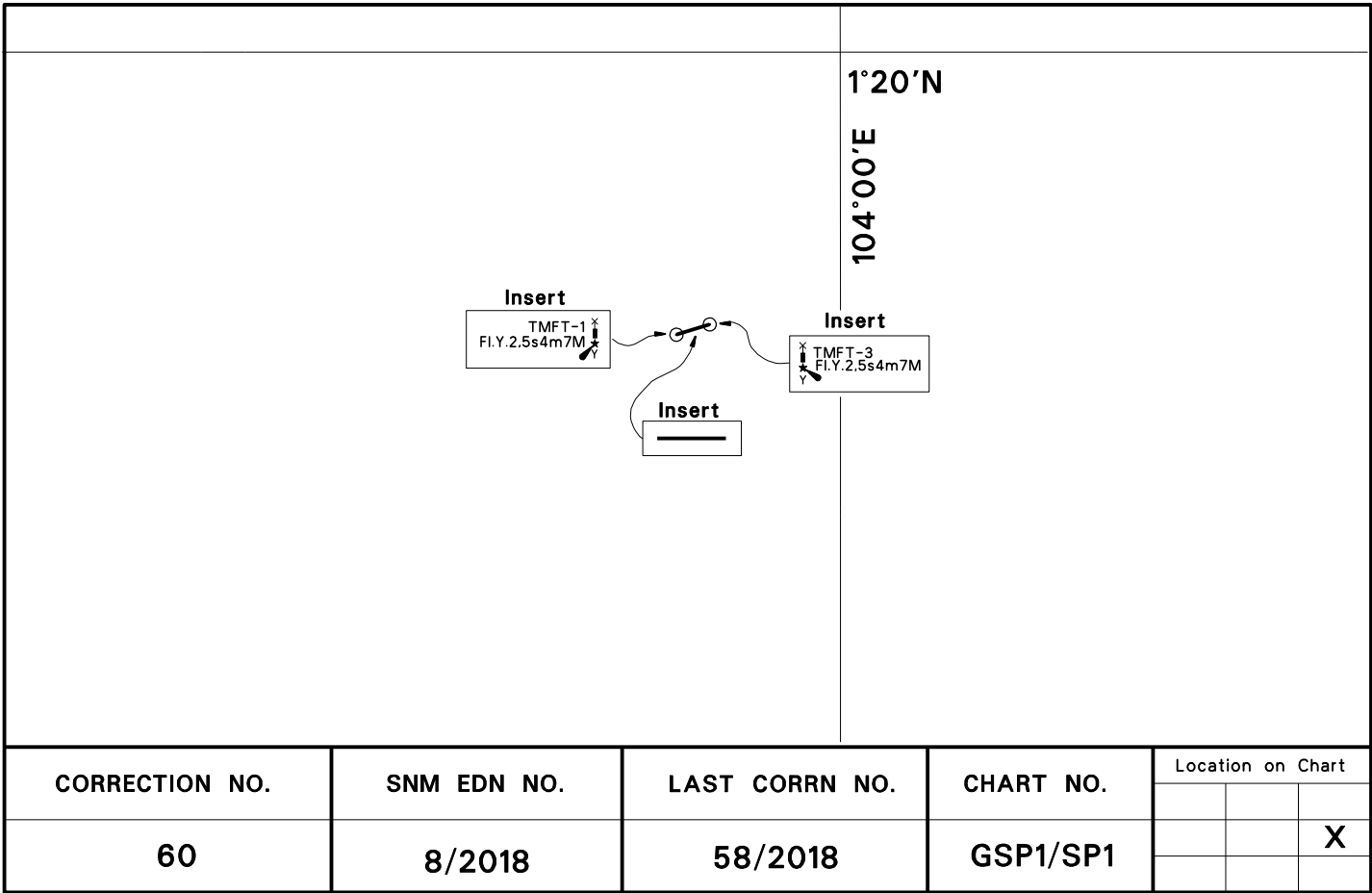
Dredging is in progress in Temasek Fairway and adjoining areas. Depths may not be as charted and vessel traffic may be diverted around temporary working areas. Mariners are advised not to enter any designated working areas. For further information, see the relevant Singapore Port Marine Notices available at the MPA website <http://www.mpa.gov.sg>.

To accompany Notice to Mariners 3597/18

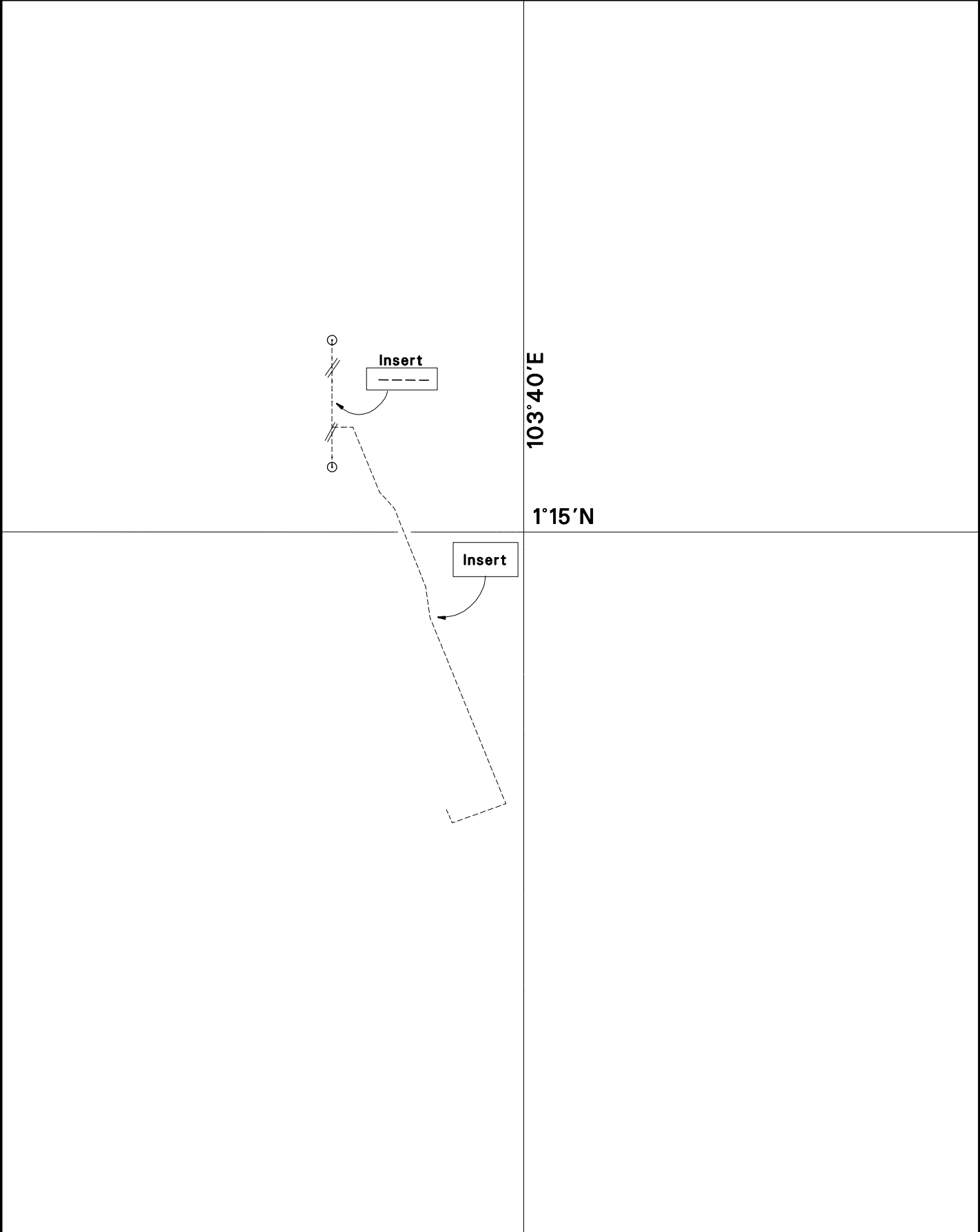
On Chart 4040

TEMASEK FAIRWAY
(1° 14' 6N., 103° 39' 3E.)

Dredging is in progress in Temasek Fairway and adjoining areas. Depths may not be as charted and vessel traffic may be diverted around temporary working areas. Mariners are advised not to enter any designated working areas. For further information, see the relevant Singapore Port Marine Notices available at the MPA website <http://www.mpa.gov.sg>.

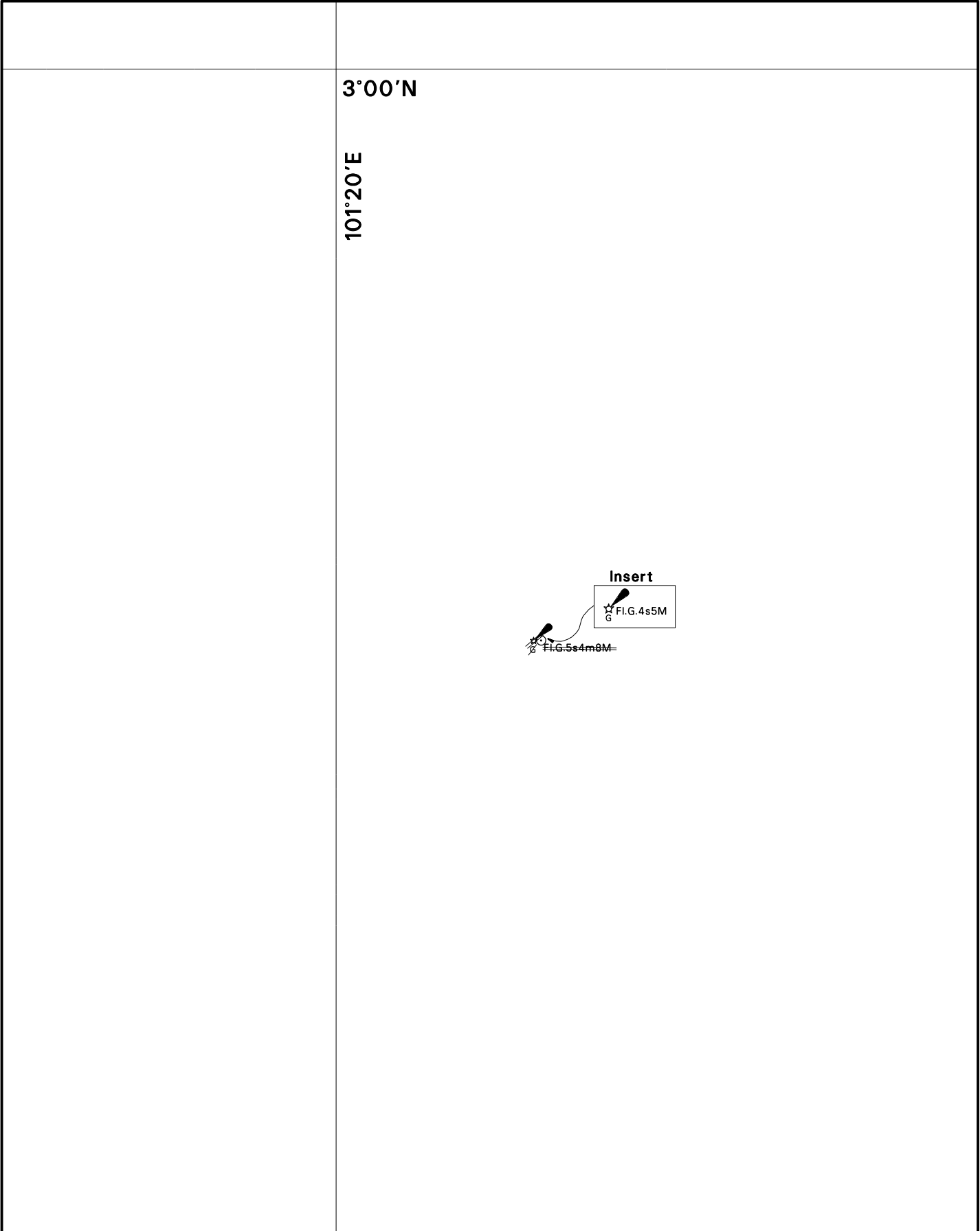


Caution: some computer printers might distort the tracings.
Users are advised to check and, if necessary, adjust settings on the printer



CORRECTION NO.	SNM EDN NO.	LAST CORR N NO.	CHART NO.	Location on Chart		
61, 62	8/2018	60/2018	GSP1/SP1	X		

Caution: some computer printers might distort the tracings.
Users are advised to check and, if necessary, adjust settings on the printer

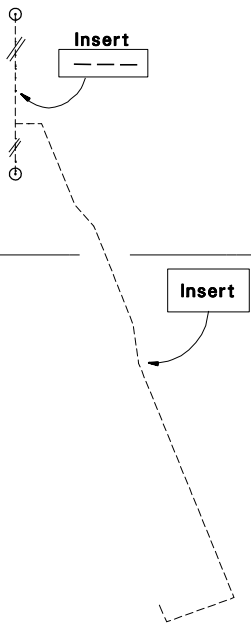


CORRECTION NO.	SNM EDN NO.	LAST CORR N NO.	CHART NO.	Location on Chart		
					X	
64	8/2018	43/2018	200			

Caution: some computer printers might distort the tracings.
Users are advised to check and, if necessary, adjust settings on the printer

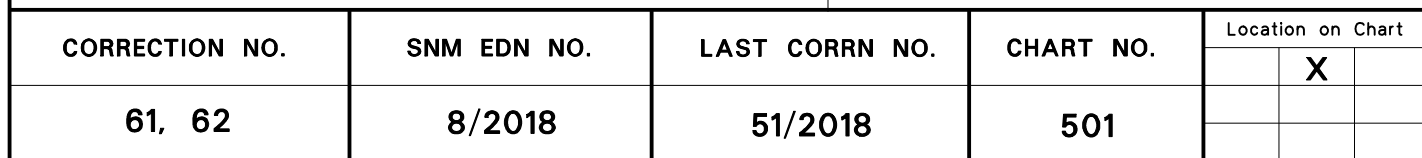
103°40'E

1°15'N



CORRECTION NO.	SNM EDN NO.	LAST CORR N NO.	CHART NO.	Location on Chart		
						X
61, 62	8/2018	51/2018	500			

Caution: some computer printers might distort the tracings.
Users are advised to check and, if necessary, adjust settings on the printer



Caution: some computer printers might distort the tracings.
Users are advised to check and, if necessary, adjust settings on the printer

	<div>103°50'E</div> <div>1°15'N</div>			
<div><div></div><div>Delete</div></div>				
CORRECTION NO.	SNM EDN NO.	LAST CORR N NO.	CHART NO.	Location on Chart
63	8/2018	62/2018	501	<div></div> <div></div> <div>X</div>

Caution: some computer printers might distort the tracings.
Users are advised to check and, if necessary, adjust settings on the printer

<div style="position: relative; width: 100%; height: 100%;"> <div style="position: absolute; top: 10%; right: 10%; font-size: 24px; font-weight: bold;">1°20'N</div> <div style="position: absolute; left: 10%; top: 50%; transform: rotate(-90deg); font-size: 24px; font-weight: bold;">104°00'E</div> <div style="position: absolute; top: 40%; left: 30%;"> <div style="border: 1px solid black; padding: 2px; margin-bottom: 5px;">Insert</div> <div style="display: flex; align-items: center;"> <div style="border: 1px solid black; padding: 2px; margin-right: 10px;"> Insert TMFT-1 FL.Y.2.5s4m7M </div> <div style="font-size: 24px; margin-right: 10px;">↗</div> <div style="border: 1px solid black; padding: 2px;"> Insert TMFT-3 FL.Y.2.5s4m7M </div> </div> </div> </div>				
CORRECTION NO.	SNM EDN NO.	LAST CORR N NO.	CHART NO.	Location on Chart
60	8/2018	33/2018	502	X

<div style="position: relative; width: 100%; height: 100%;"> <div style="position: absolute; top: 10%; left: 30%;"> <div style="border: 1px solid black; padding: 2px;">Delete</div> <div style="font-size: 24px; margin-top: 5px;">✗</div> </div> <div style="position: absolute; top: 50%; left: 10%;"> <div style="border: 1px solid black; padding: 2px;">1°</div> <div style="border: 1px solid black; padding: 2px;">15'</div> </div> <div style="position: absolute; top: 70%; left: 30%;"> <div style="border: 1px solid black; padding: 2px;">5000</div> </div> </div>				
CORRECTION NO.	SNM EDN NO.	LAST CORR N NO.	CHART NO.	Location on Chart
63	8/2018	60/2018	502	X

Caution: some computer printers might distort the tracings.
 Users are advised to check and, if necessary, adjust settings on the printer