



SINGAPOREAN NOTICES TO MARINERS

SECTION	CONTENT	Page
I	Affected Charts & Publications	1
II	New Charts & Publications	3
	Notices to Mariners and Chart Corrections	11
	Temporary and Preliminary Notices	13
III	Navigational Information	17
	Amendments to Publications	18
IV	Reprint of Maritime Safety Information	20
V	Extract of Admiralty Notices to Mariners for Dual-Badged Charts	22

The monthly Notices to Mariners contain information required to keep charts and publications published by the Hydrographic Division, Maritime and Port Authority of Singapore up-to-date.

Mariners are requested to notify the Chief Hydrographer, Maritime and Port Authority of Singapore, immediately of the discovery of new or suspected dangers to navigation, observed changes to aids to navigation and ways Singaporean Charts and Publications can be improved. The Hydrographic Note on the back page should be used for this purpose.

Detailed information of charts and publications (coverage of charts, latest editions and distributors) are available on the Maritime and Port Authority Website: www.mpa.gov.sg

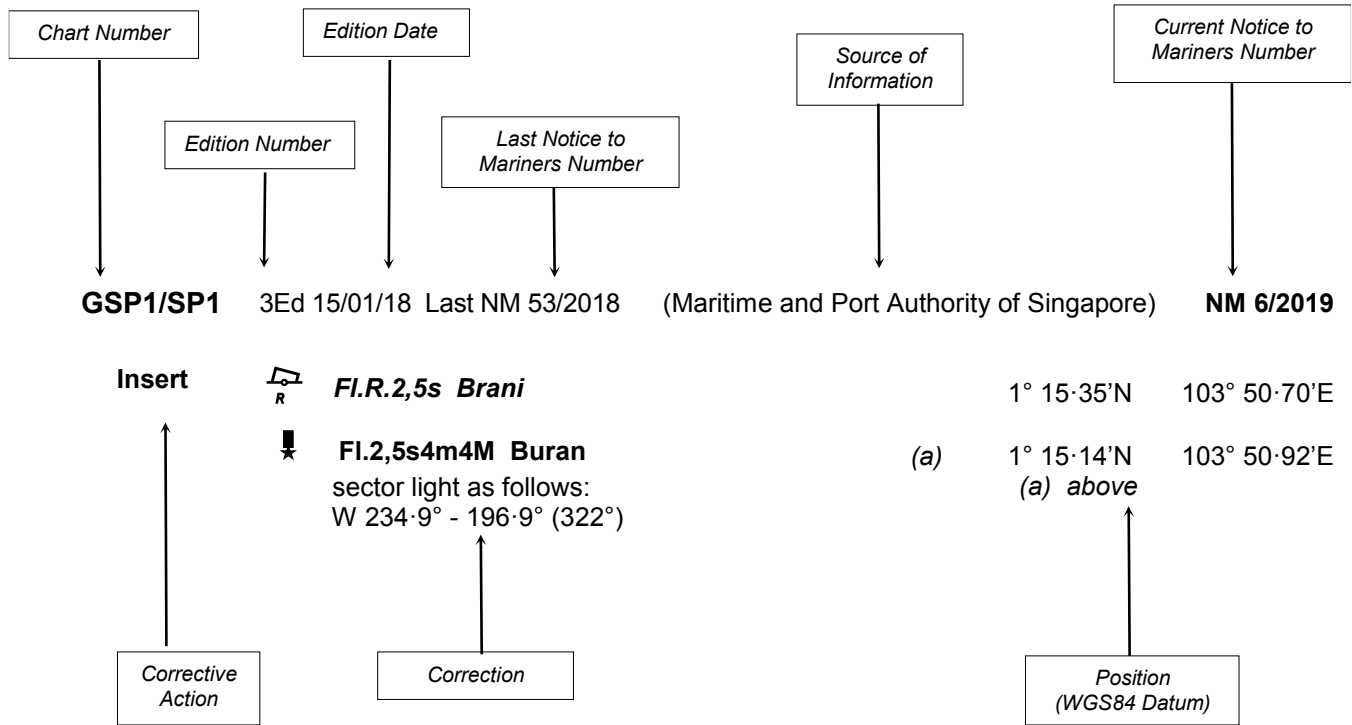
- [Singaporean Notice to Mariners](#)
- [Singaporean Charts](#)
- [Dual-Badged Charts](#)
- [Singapore ENC](#)
- [Malacca and Singapore Straits ENC](#)
- [Singapore Port Information](#)
- [Singapore Tide Tables](#)

Contact information:

Hydrographic Division
Maritime and Port Authority of Singapore
7B Keppel Road
#20-00 Tanjong Pagar Complex
Singapore 089055
Tel : (65) 6325 2027
Fax : (65) 6226 1076
Email : hydrographic@mpa.gov.sg

EXPLANATION OF FORMAT

The elements of a typical chart correction are explained below.



Notes:

a) Notice to Mariners number followed by:

T indicates a Temporary Notice (eg. **NM 9T/2019**).

P indicates a Preliminary Notice (eg. **NM 10P/2019**).

b) Bearings are true reckoned clockwise from 000° to 359°; those relating to lights are from seaward.

c) Heights and elevations are above Mean High Water Springs.

I
AFFECTED CHARTS AND PUBLICATIONS

INDEX OF AFFECTED CHARTS

DESCRIPTION	NOTICE NO.	PAGE NO.
New Charts and Publications	-	3 - 10
Singaporean Chart GSP1/SP1	*81, *82, *83	11
Singaporean Chart 200	84	11
Singaporean Chart 201	85	11
Singaporean Chart 202	85, 86	11
Singaporean Chart 500	*83, 85	11 - 12
Singaporean Chart 501	*83	12
Temporary and Preliminary Notices	87T, *88T	13 - 16
Singapore Port Marine Notices/Circulars	*89	17
Amendments to Publications	*90	18 - 19
Reprint of Maritime Safety Information	-	20 - 21
Extract of Admiralty Notices to Mariners for Dual-Badged Charts	-	22 - 24

*Source: Maritime and Port Authority of Singapore

I
AFFECTED CHARTS AND PUBLICATIONS

INDEX OF NOTICES

NOTICE NO.	DESCRIPTION	PAGE NO.
-	New Charts and Publications	3 - 10
*81, *82, *83	Singaporean Chart GSP1/SP1	11
84	Singaporean Chart 200	11
85	Singaporean Chart 201	11
85, 86	Singaporean Chart 202	11
*83, 85	Singaporean Chart 500	11 - 12
*83	Singaporean Chart 501	12
87T, *88T	Temporary and Preliminary Notices	13 - 16
*89	Singapore Port Marine Notices/Circulars	17
*90	Amendments to Publications	18 - 19
-	Reprint of Maritime Safety Information	20 - 21
-	Extract of Admiralty Notices to Mariners for Dual-Badged Charts	22 - 24

*Source: Maritime and Port Authority of Singapore

II

NEW CHARTS AND PUBLICATIONS

NEW EDITION DUAL BADGED CHARTS TO BE PUBLISHED ON 15TH AUGUST 2019

Chart Number	:	4038
Title	:	Malaysia and Singapore Johor Strait - Western Part
Coverage	:	Lat 01° 10-80' N 01° 28-70' N Long 103° 28-60' E 103° 40-70' E
Scale	:	1 : 30 000
Date to be Published	:	15 th August 2019
Size of Chart	:	750.6 x 1100.2 mm
Description	:	This new edition includes revised anchorages, fairways, updated bathymetry and topography details covering Sudong, Jurong Island and western part of Johor Strait, including bathymetry details in the TSS from the Joint Survey in the Strait of Malacca and Singapore
		The existing chart of the same number published on 25 th February 2016 will be superseded.

Chart Number	:	4040
Title	:	Singapore, Indonesia and Malaysia Tuas View to Pulau Sakijang Bendera (S. John's Island)
Coverage	:	Lat 01° 07-40' N 01° 19-60' N Long 103° 34-10' E 103° 51-90' E
Scale	:	1 : 30 000
Date to be Published	:	15 th August 2019
Size of Chart	:	1100.6 x 749.5 mm
Description	:	This new edition includes revised anchorages, channel, fairways, updated bathymetry and topography details covering West Keppel Fairway, Sudong, Jurong Island, Tuas View to Pulau Sakijang Bendera, including bathymetry details in the TSS from the Joint Survey in the Straits of Malacca and Singapore.
		The existing chart of the same number published on 4 th May 2017 will be superseded.

II

NEW CHARTS AND PUBLICATIONS

NEW EDITION DUAL BADGED CHARTS TO BE PUBLISHED ON 12TH SEPTEMBER 2019

Chart Number	:	4039
Title	:	Indonesia, Singapore and Malaysia Western Approaches to Main Strait
Coverage	:	Lat 01° 01·50' N 01° 13·70' N Long 103° 31·20' E 103° 49·00' E
Scale	:	1 : 30 000
Date to be Published	:	12 th September 2019
Size of Chart	:	1100.7 x 749.5 mm
Description	:	This new edition includes revised anchorages, fairways, updated bathymetry and topography details covering Sudong, Jurong Island and western part of Johor Strait, including bathymetry details in the TSS from the Joint Survey in the Straits of Malacca and Singapore.

The existing chart of the same number published on 4th May 2017 will be superseded.

Chart Number	:	4041
Title	:	Singapore and Indonesia Pulau Sebarok to Changi
Coverage	:	Lat 01° 07·40' N 01° 19·60' N Long 103° 46·90' E 104° 04·70' E
Scale	:	1 : 30 000
Date to be Published	:	12 th September 2019
Size of Chart	:	1100.6 x 749.5 mm
Description	:	This new edition includes updated bathymetry covering Pulau Sebarok to Changi and new anchorages around Batam, including bathymetry details in the TSS from the Joint Survey in the Straits of Malacca and Singapore.

The existing chart of the same number published on 27th December 2018 will be superseded.

Chart Number	:	4042
Title	:	Indonesia, Singapore and Malaysia Changi to Pulau Mungging and Tanjung Buntan to Tanjung Tondang
Coverage	:	Lat 01° 09·55' N 01° 21·75' N Long 104° 01·70' E 104° 19·50' E
Scale	:	1 : 30 000
Date to be Published	:	12 th September 2019
Size of Chart	:	1100.6 x 749.5 mm
Description	:	This new edition includes updated submarine cables and bathymetry details covering Changi.

The existing chart of the same number published on 15th June 2017 will be superseded.

II

NEW CHARTS AND PUBLICATIONS

NEW EDITION SINGAPOREAN CHARTS TO BE PUBLISHED ON 1ST SEPTEMBER 2019

Chart Number	:	GSP1
Title	:	Anchorage and Aids to Navigation
Coverage	:	Lat 01° 06·43' N 01° 29·40' N Long 103° 34·00' E 104° 08·10' E
Scale	:	1 : 65 000
Date to be Published	:	1 st September 2019
Size of Chart	:	973.2 x 651.3 mm
Description	:	This new edition includes new changes to aids to navigation, working areas, submarine cables, depth contours from the latest surveys covering west of Tuas View Reclamation, Temasek Fairway, Sinki Fairway, West Keppel Fairway, Jong Fairway, Southern Fairway, Eastern Fairway, West Jurong Channel, East Jurong Channel, Western Anchorages, Sudong Anchorages, Eastern Anchorages, East and West Johor Strait and Pulau Tekong.

The existing chart of the same number published on 15th January 2018 will be superseded.

*This chart is provided with a grid reference.

Chart Number	:	SP1
Title	:	Anchorage and Aids to Navigation
Coverage	:	Lat 01° 06·43' N 01° 29·40' N Long 103° 34·00' E 104° 08·10' E
Scale	:	1 : 65 000
Date to be Published	:	1 st September 2019
Size of Chart	:	973.2 x 651.3 mm
Description	:	This new edition includes new changes to aids to navigation, working areas, submarine cables, depth contours from the latest surveys covering west of Tuas View Reclamation, Temasek Fairway, Sinki Fairway, West Keppel Fairway, Jong Fairway, Southern Fairway, Eastern Fairway, West Jurong Channel, East Jurong Channel, Western Anchorages, Sudong Anchorages, Eastern Anchorages, East and West Johor Strait and Pulau Tekong.

The existing chart of the same number published on 15th January 2018 will be superseded.

II

NEW CHARTS AND PUBLICATIONS

NEW EDITION SINGAPOREAN CHARTS TO BE PUBLISHED ON 15TH SEPTEMBER 2019

Chart Number	:	500
Title	:	Malacca and Singapore Straits Pulau Pisang To Raffles Lighthouse
Coverage	:	Lat 01° 04·05' N 01° 30·50' N Long 103° 05·80' E 103° 44·61' E
Scale	:	1 : 75 000
Date to be Published	:	15 th September 2019
Size of Chart	:	959.8 x 649.9 mm
Description	:	This new edition includes new changes to aids to navigation, working areas, submarine cables, updated bathymetry covering west of Tuas View Reclamation, Temasek Fairway, Sinki Fairway, Sudong Anchorages and TSS.
		The existing chart of the same number published on 15 th September 2017 will be superseded.

Chart Number	:	501
Title	:	Singapore Strait - Western Part
Coverage	:	Lat 00° 58·36' N 01° 16·00' N Long 103° 29·17' E 103° 55·05' E
Scale	:	1 : 50 000
Date to be Published	:	15 th September 2019
Size of Chart	:	960.0 x 649.9 mm
Description	:	This new edition includes new changes to aids to navigation, working areas, submarine cables, updated bathymetry covering west of Tuas View Reclamation, Temasek Fairway, Sinki Fairway, West Keppel Fairway, Jong Fairway, Southern Fairway, Eastern Fairway, East Jurong Channel, Western Anchorages, Sudong Anchorages and TSS.
		The existing chart of the same number published on 1st September 2015 will be superseded.

Chart Number	:	502
Title	:	Singapore Strait - Eastern Part
Coverage	:	Lat 01° 07·00' N 01° 24·61' N Long 103° 51·43' E 104° 17·31' E
Scale	:	1 : 50 000
Date to be Published	:	15 th September 2019
Size of Chart	:	960.0 x 649.2 mm
Description	:	This new edition includes new changes to aids to navigation, working areas, submarine cables, updated bathymetry covering Southern Fairway, Eastern Fairway, Eastern Anchorages and Pulau Tekong.
		The existing chart of the same number published on 1 st September 2015 will be superseded.

II

NEW CHARTS AND PUBLICATIONS

NEW EDITION SINGAPORE ENC TO BE RELEASED ON 15TH AUGUST 2019

ENC Name : SG5C4038
Location : Johor Strait - Western Part
Coverage : Lat 01° 13·70' N 01° 31·20' N
 Long 103° 34·10' E 103° 46·34' E
Compilation Scale : 1 : 22 000
Date Released : 15th August 2019
Description : This new edition includes updated bathymetry and topography details covering western part Singapore and Johor Strait.

The existing cell of the same name released on 17th July 2017 will be superseded.

NEW EDITION SINGAPORE ENC TO BE RELEASED ON 12TH SEPTEMBER 2019

ENC Name : SG5C4039
Location : Western Approaches to Main Strait
Coverage : Lat 01° 01·50' N 01° 13·70' N

Compilation Scale : 1 : 22 000
Date Released : 12th September 2019
Description : This new edition includes revised anchorages, updated bathymetry details covering western approaches to Main Strait.

The existing cell of the same name released on 17th July 2017 will be superseded.

ENC Name : SG5C4041
Location : Pulau Sebarok to Changi
Coverage : Lat 01° 07·40' N 01° 19·60' N

Compilation Scale : 1 : 22 000
Date Released : 12th September 2019
Description : This new edition includes updated bathymetry and covering Pulau Sebarok to Changi.

The existing cell of the same name released on 27th December 2018 will be superseded.

II

NEW CHARTS AND PUBLICATIONS

SINGAPORE TIDE TABLES YEAR 2020 TO BE PUBLISHED ON 30TH SEPTEMBER 2019**Summary of Publication**

This publication contains Tidal Height and Tidal Stream Predictions covering stations in Singapore Port Waters and along the Straits of Malacca and Singapore.

This publication consists of 5 segments.

1. **High and Low Water Predictions** at the following stations:
 - a) Tanjong Pagar
 - b) Sembawang

2. **Hourly Tidal Height Predictions** at the following stations:
 - a) West Tuas
 - b) Sultan Shoal Lighthouse
 - c) Raffles Lighthouse
 - d) West Coast
 - e) Bukom
 - f) Tanjong Pagar
 - g) Tanah Merah
 - h) Tanjong Changi
 - i) Sembawang
 - j) Singapore Strait - Horsburgh Lighthouse

3. **Hourly Tidal Stream Predictions** at the following stations:
 - a) Main Strait - off Tuas View
 - b) Sinki Fairway - Banyan
 - c) Jong Fairway - off Sisters Buoy
 - d) Main Strait - off Shell SBM Buoy
 - e) Sentosa - off Cruise Bay
 - f) East Buran
 - g) Main Strait - Eastern Petroleum A
 - h) Kuala Johor - off Malang Tiga

4. **Maximum and Slack Tidal Stream Predictions** at the following stations:
 - a) Malacca Strait - off Pulau Iyu Kecil Light
 - b) Singapore Strait - Selat Phillip
 - c) Singapore Strait - Karang Banteng (Buffalo Rock)
 - d) Singapore Strait - Horsburgh Lighthouse

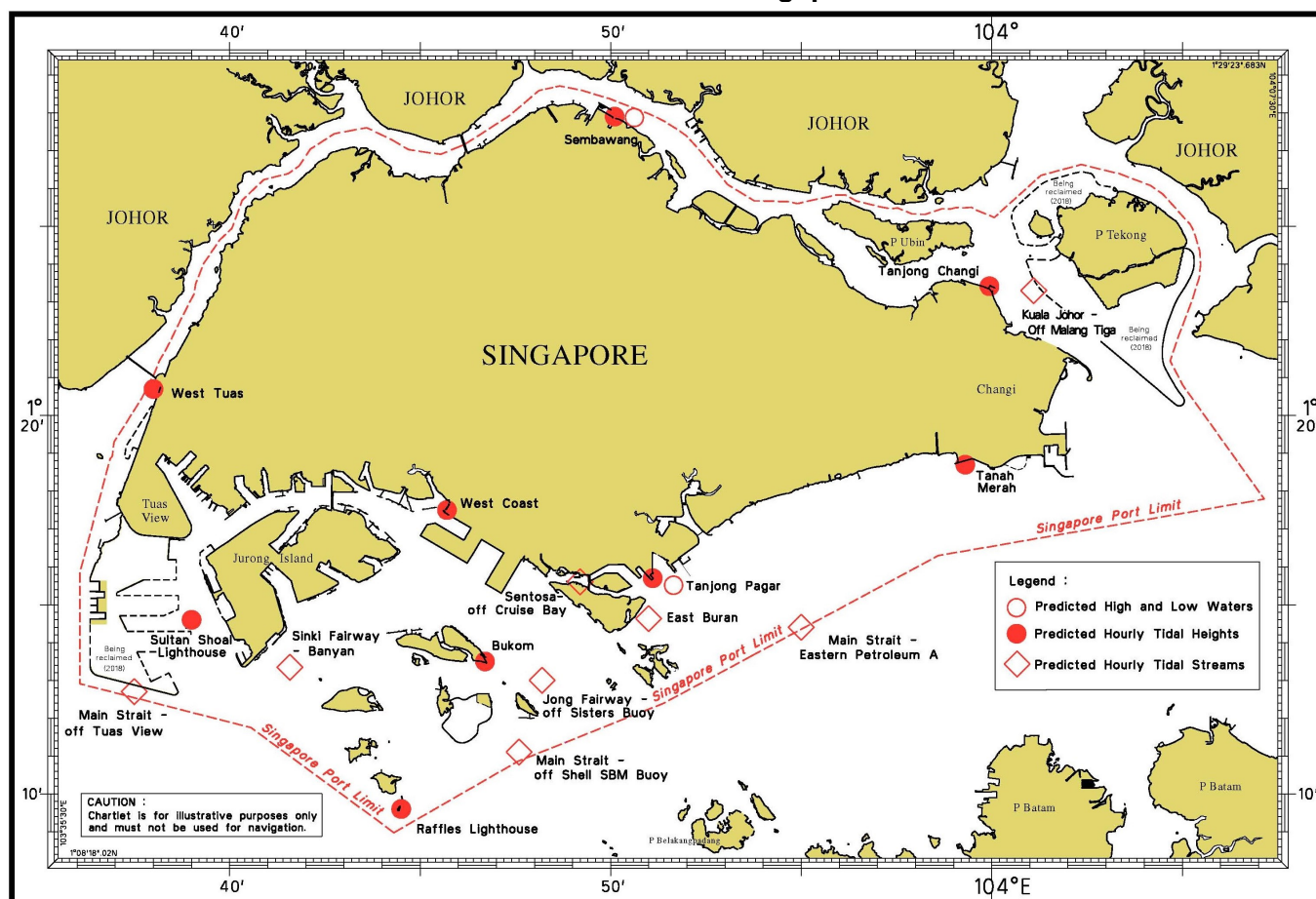
5. **Malacca Strait - High and Low Water Predictions** at the following stations:
 - a) Kedah Pier, Pulau Pinang
 - b) Port Dickson
 - c) Kuala Batu Pahat

The locations of the above stations are shown in the chartlets below:

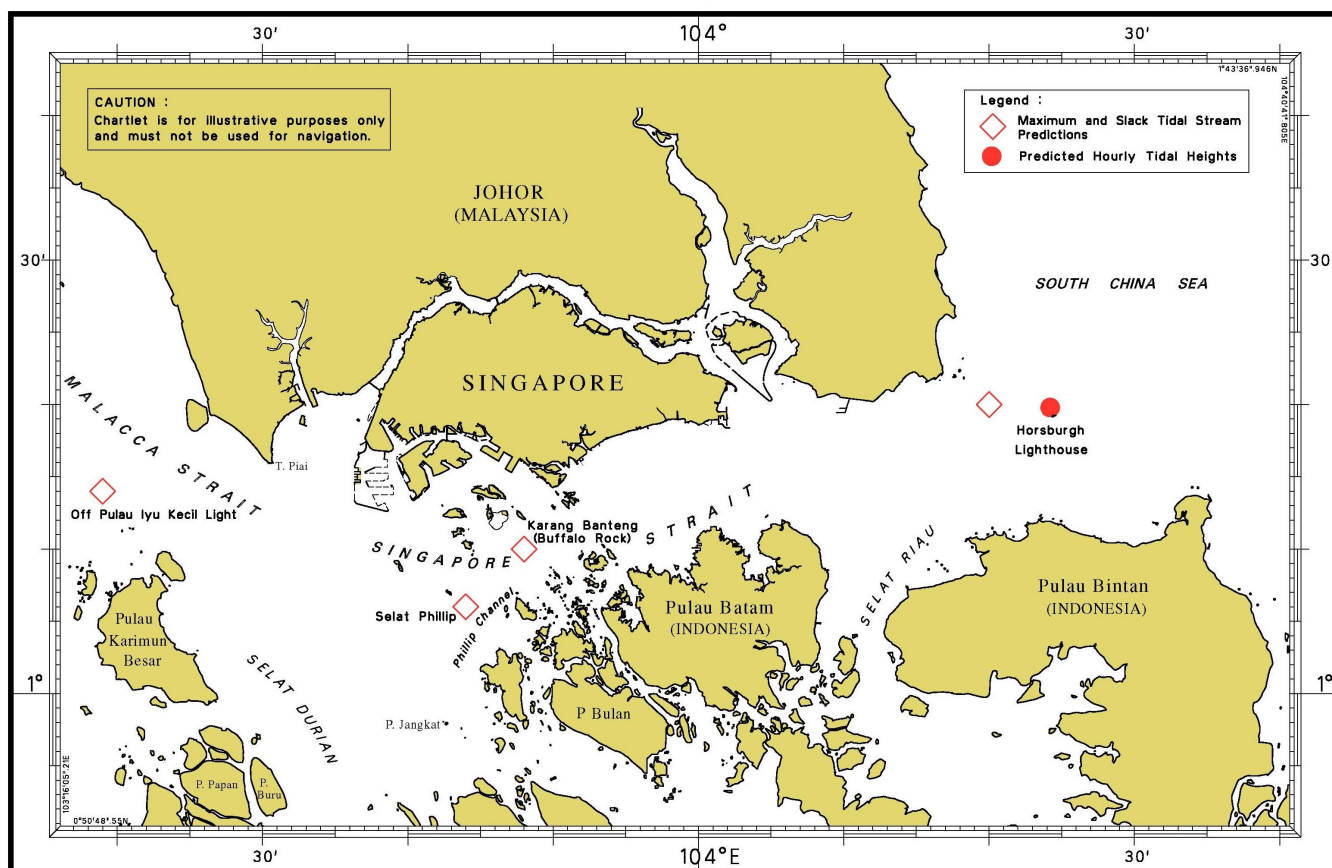
II

NEW CHARTS AND PUBLICATIONS

Tidal Prediction Stations within Singapore Port Waters



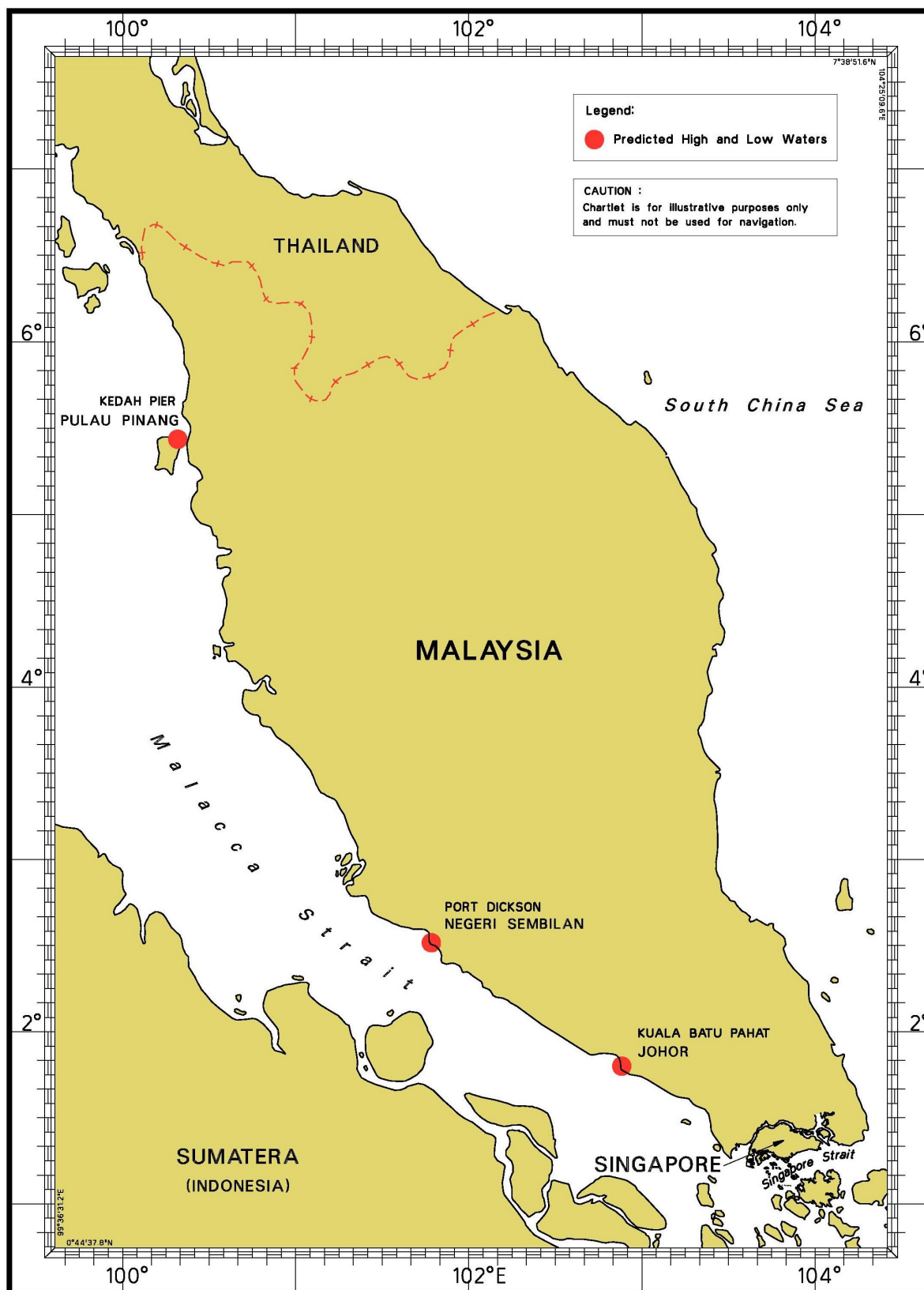
Tidal Prediction Stations in Straits of Malacca and Singapore



II

NEW CHARTS AND PUBLICATIONS

Tidal Prediction Stations In Malacca Strait







This publication can be purchased from any of the MPA appointed Chart Distributors.

Information on the MPA appointed Chart Distributors can be found from the following link:

<http://www.mpa.gov.sg/web/portal/home/media-centre/publications/singapore-tide-tables>

II

NOTICES TO MARINERS AND CHART CORRECTIONS

GSP1/SP1	3 Ed 15/1/18	Last NM 76/2019	(Maritime and Port Authority of Singapore)	NM 81/2019
Amend	light to, <i>Fl(4)Y.10s</i>		1°19·86'N	103°37·36'E
			1°19·28'N	103°37·00'E
			1°19·82'N	103°37·42'E
			1°19·07'N	103°36·97'E
			(Maritime and Port Authority of Singapore)	NM 82/2019
Insert	light, <i>Fl(2)G.6s</i> , to buoy		1°13·15'N	103°43·03'E
			(Maritime and Port Authority of Singapore)	NM 83/2019
Delete	 <i>Fl(2)R.7s</i>		1°14·63'N	103°39·34'E
	maritime limit, pecked line, joining:		1°15·71'N	103°38·71'E
			1°15·71'N	103°38·85'E
			1°15·27'N	103°39·03'E
			1°15·16'N	103°39·13'E
			1°14·63'N	103°39·34'E
			1°14·42'N	103°39·37'E
			1°13·16'N	103°39·88'E
			1°13·03'N	103°39·52'E
			1°13·12'N	103°39·48'E
	legend, <i>Works in progress (2018)</i> , centred on:		1°13·47'N	103°39·70'E
<hr/>				
200	4 Ed 1/9/15	Last NM 63/2019	(Admiralty Notice no. 27/3314/19)	NM 84/2019
Insert	 <i>Fl(2)10s</i> <i>OFB Wreck</i>		2°56·63'N	100°59·49'E
<hr/>				
201	6 Ed 15/9/17	Last NM 77/2019	(Admiralty Notice no. 31/3803/19)	NM 85/2019
Delete	 <i>Fl(2)</i>		1°26·15'N	103°16·30'E
<hr/>				
202	8 Ed 15/9/16	Last NM 77/2019	(Admiralty Notice no. 31/3803/19)	NM 85/2019
Delete	 <i>Fl(2)</i>		1°26·15'N	103°16·30'E
			(Admiralty Notice no. 23/2809/19)	NM 86/2019
Insert	depth, 15, enclosed by 20m contour		1°02·20'N	103°17·19'E
<hr/>				
500	8 Ed 15/9/17	Last NM 77/2019	(Maritime and Port Authority of Singapore)	NM 83/2019
Delete	maritime limit, pecked line, joining:		1°15·71'N	103°38·71'E
			1°15·71'N	103°38·85'E
			1°15·27'N	103°39·03'E
			1°15·16'N	103°39·13'E
			1°14·63'N	103°39·34'E
			1°14·42'N	103°39·37'E
			1°13·16'N	103°39·88'E
			1°13·03'N	103°39·52'E
			1°13·12'N	103°39·48'E
	legend, <i>Works in progress (2018)</i> , centred on:		1°14·80'N	103°39·15'E

II

NOTICES TO MARINERS AND CHART CORRECTIONS

(Admiralty Notice no. 31/3803/19)

NM 85/2019**Delete**

FI(2)

1°26·15'N

103°16·30'E

501

7 Ed 1/9/15

Last NM 33/2019 (Maritime and Port Authority of Singapore)

NM 83/2019**Delete**

maritime limit, pecked line, joining:

1°15·71'N

103°38·71'E

1°15·71'N

103°38·85'E

1°15·27'N

103°39·03'E

1°15·16'N

103°39·13'E

1°14·63'N

103°39·34'E

1°14·42'N

103°39·37'E

1°13·16'N

103°39·88'E

1°13·03'N

103°39·52'E

1°13·12'N

103°39·48'E

legend, *Works in progress (2018)*, centred on:

1°14·40'N

103°39·29'E

1°13·33'N

103°39·66'E

II

TEMPORARY AND PRELIMINARY NOTICES

(NM 87T/2019) : JOINT HYDROGRAPHIC SURVEY IN STRAITS OF MALACCA AND SINGAPORE

Purpose : Hydrographic survey will be carried out in the Straits, in order to improve safe navigation and smooth uninterrupted passage in the Traffic Separation Scheme (TSS) of the Straits of Malacca and Singapore (STRAITREP Sector 6 to 9)

Overall survey period : From 28th June to 31st August 2019, Daylight hours only

Operation : SSE MAZU (YDB3013)

Survey areas : The survey in the Straits will be conducted in staged according to the survey planned period listed below at the Traffic Separation Scheme bounded by the following coordinates:

1. A-42	Coordinate of Survey area A-42	Latitude (N)	Longitude (E)	Planned Survey Period
	A	1° 17' 22.057"	104° 7' 39.615"	25 th July 2019 to 14 th August 2019
	B	1° 19' 23.893"	104° 19' 23.404"	
	C	1° 20' 2.219"	104° 20' 7.118"	
	D	1° 19' 2.566"	104° 20' 46.068"	
	E	1° 18' 0.067"	104° 19' 36.062"	
	F	1° 17' 19.110"	104° 14' 53.670"	
	G	1° 17' 6.318"	104° 14' 54.054"	
	H	1° 16' 3.468"	104° 8' 35.219"	

A-43	Coordinate of Survey area A-43	Latitude (N)	Longitude (E)	Planned Survey Period
	A	1° 17' 36.038"	104° 18' 24.902"	14 th August 2019
	B	1° 17' 46.726"	104° 19' 39.991"	
	C	1° 17' 30.409"	104° 19' 40.939"	
	D	1° 17' 20.851"	104° 18' 25.058"	

A-34	Coordinate of Survey area A-34	Latitude (N)	Longitude (E)	Planned Survey Period
	A	1° 7' 3.181"	103° 32' 51.259"	14 th August 2019 to 17 th August 2019
	B	1° 3' 35.744"	103° 38' 50.860"	
	C	1° 2' 24.672"	103° 38' 10.153"	
	D	1° 5' 56.008"	103° 32' 11.637"	

II

TEMPORARY AND PRELIMINARY NOTICES

A-35	Coordinate of Survey area A-35	Latitude (N)	Longitude (E)	Planned Survey Period
	A	1° 3' 35.744"	103° 38' 50.860"	18 th August 2019 to 27 th August 2019
	B	1° 5' 53.887"	103° 43' 16.626"	
	C	1° 7' 3.596"	103° 44' 9.302"	
	D	1° 6' 28.575"	103° 44' 55.104"	
	E	1° 4' 59.898"	103° 43' 33.029"	
	F	1° 1' 35.916"	103° 39' 32.842"	
	G	1° 2' 24.672"	103° 38' 10.153"	

A-38	Coordinate of Survey area A-38	Latitude (N)	Longitude (E)	Planned
	A	1° 8' 25.132"	103° 45' 22.408"	27 th August 2019 to 29 th August 2019
	B	1° 10' 5.340"	103° 47' 56.770"	
	C	1° 9' 1.287"	103° 47' 56.380"	
	D	1° 7' 49.553"	103° 46' 10.201"	
	E	1° 6' 47.382"	103° 45' 13.698"	

A-39	Coordinate of Survey area A-39	Latitude (N)	Longitude (E)	Planned Survey Period
	A	1° 10' 5.340"	103° 47' 56.770"	29 th August 2019
	B	1° 10' 40.625"	103° 49' 13.714"	
	C	1° 10' 5.340"	103° 49' 28.762"	

A-40	Coordinate of Survey area A-40	Latitude (N)	Longitude (E)	Planned Survey Period
	A	1° 11' 35.790"	103° 51' 17.594"	29 th August 2019
	B	1° 12' 8.695"	103° 52' 14.694"	
	C	1° 12' 8.695"	103° 52' 17.598"	
	D	1° 11' 59.180"	103° 52' 20.690"	
	E	1° 11' 15.750"	103° 52' 20.690"	
	F	1° 10' 54.174"	103° 51' 34.046"	

A-46	Coordinate of Survey area A-46	Latitude (N)	Longitude (E)	Planned Survey Period
	A	1° 14' 16.961"	103° 57' 24.364"	30 th August 2019
	B	1° 14' 16.961"	103° 57' 36.112"	
	C	1° 14' 6.447"	103° 57' 36.112"	
	D	1° 14' 6.447"	103° 57' 24.364"	

II

TEMPORARY AND PRELIMINARY NOTICES

A-41	Coordinate of Survey area A-41	Latitude (N)	Longitude (E)	Planned Survey Period
	A	1° 14' 29.028"	103° 58' 17.622"	30 th August 2019 and 31 st August 2019
	B	1° 15' 21.289"	104° 2' 2.153"	
	C	1° 14' 56.126"	104° 2' 7.960"	
	D	1° 14' 5.800"	103° 58' 25.365"	

A-47	Coordinate of Survey area A-47	Latitude (N)	Longitude (E)	Planned Survey Period
	A	1° 15' 54.227"	104° 3' 1.591"	31 st August 2019
	B	1° 15' 54.227"	104° 3' 11.394"	
	C	1° 15' 45.918"	104° 3' 11.394"	
	D	1° 15' 45.918"	104° 3' 1.591"	

- Charts affected: Singaporean GSP1/SP1, 201, 202, 500, 501,
BA 4030, BA 4031, BA 4036, BA 4038, BA 4039, BA 4040, BA 4041 and BA 4042.
- ENCs affected: SG5C4030, SG5C4031, SG5C4036, SG5C4039, SG5C4041, SG5C4043,
MS3IK2EB, MS4IK2RL, MS4BR2JS and MS3IK2EB.
- Mariners are advised to navigate with caution and give a wide berth.
- Navigational warning broadcast will be promulgated by the relevant VTS Authorities by VHF and NAVTEX. Mariners are to maintain a listening watch.

Note: Former notice 73T/2019 has been cancelled.

Source: Aero Asahi Corporation, Japan (SCOPE OF WORKS FOR PHASE 2 OF THE JOINT HYDROGRAPHIC SURVEY OF THE STRAITS OF MALACCA AND SINGAPORE (THE "JOINT HYDROGRAPHIC SURVEY"))).

II

TEMPORARY AND PRELIMINARY NOTICES

***(NM 88T/2019) :** **CABLE LAYING WORKS IN THE EAST JOHOR STRAIT**

Description : Cable laying works will be conducted in the East Johor Strait
(refer to Maritime and Port Authority of Singapore, Port Marine Notice 48/2019)

Working Period : From 29th May 2019 until 28 November 2019

1. The working area is bounded by the following coordinates:

No.	Co-ordinates (WGS84)	
	Latitude (N)	Longitude (E)
1	1°28.585'	103°48.148'
2	1°28.696'	103°48.662'
3	1°28.208'	103°48.573'
4	1°28.141'	103°48.182'

2. Denman Shoal buoy and Senoko "A" buoy has been temporarily relocated to the following positions:

Name of Buoy	Co-ordinates (WGS84)	
	Latitude (N)	Longitude (E)
Denman Shoal	1°28.564'	103°48.483'
Senoko "A"	1°28.585'	103°48.518'

3. Mariners are advised to refer to the latest Port Marine Notices available at the MPA website for the latest information and navigate with caution.

Note: Former notice 19T/2019 has been cancelled.

Charts Affected: Singaporean GSP1/SP1, 202, and Dual Badged BA4044

Source: Maritime and Port Authority of Singapore

III NAVIGATIONAL INFORMATION

*(NM 89/2019) SINGAPORE PORT MARINE NOTICES/CIRCULARS

The Port Marine Notices/Circulars shortlisted below would be of particular interest to Mariners. Details and complete list of Port Marine Notices/Circulars are available at this link:

<http://www.mpa.gov.sg/web/portal/home/port-of-singapore/circulars-and-notices>

PMN No.	Subject
59/2019	Construction of subsea pipeline at West Jurong Channel and Pesek Basin
64/2019	Works at Tuas Western Coast
65/2019	Soil investigation and survey work off Pulau Tekong
66/2019	Works off west of Jurong Island
PMC No.	Subject
13/2019	Guidelines for preventing pollution during bunkering operations
14/2019	Maritime and Port Authority of Singapore temporarily suspends Inter-Pacific Petroleum Pte Ltd's bunker craft operator licence
15/2019	Mandatory adoption of mass flow metering system for distillates delivery in the port of Singapore from 1 July 2019

*Source: Maritime and Port Authority of Singapore

III AMENDMENTS TO PUBLICATIONS

*(NM 90/2019) UPDATING OF PUBLICATION “SINGAPORE PORT INFORMATION 2018/2019”

CHARACTERISTICS OF AIDS TO NAVIGATION

1. Page 131

Delete the following:

Name of Beacon/ Buoy	Position Lat. N Long. E Deg Min	Structure, Colour & Shape	Light Characteristic	Owner
Sarimbun Beacon	01°26·334' 103°41.242'	Green cone on green masonry cone frustum	Unlit	-

2. Page 133

Amend the following:

Name of Beacon/ Buoy	Position Lat. N Long. E Deg Min	Structure, Colour & Shape	Light Characteristic	Owner
HD TWC 11 Buoy	01°19·857' 103°37·355'	Yellow pillar with 'X' topmark	Fl(4)Y.10s (sync)	Hyundai
HD TWC 12 Buoy	01°19·284' 103°36·995'	Yellow pillar with 'X' topmark	Fl(4)Y.10s (sync)	Hyundai
HD TWC 13 Buoy	01°19·065' 103°36·969'	Yellow pillar with 'X' topmark	Fl(4)Y.10s (sync)	Hyundai
HD TWC 14 Buoy	01°19·817' 103°37·418'	Yellow pillar with 'X' topmark	Fl(4)Y.10s (sync)	Hyundai

3. **Delete** the following:

Name of Beacon/ Buoy	Position Lat. N Long. E Deg Min	Structure, Colour & Shape	Light Characteristic	Owner
HSPBV-MB 3 Mooring Buoy	01°15·570' 103°38·467'	Yellow drum	Fl.Y.5s	HSPBV Joint Venture
HSPBV-MB 3A Mooring Buoy	01°15·570' 103°38·639'	Yellow drum	Fl.Y.5s	HSPBV Joint Venture

III AMENDMENTS TO PUBLICATIONS

*(NM 90/2019) UPDATING OF PUBLICATION “SINGAPORE PORT INFORMATION 2018/2019”

4. Page 141

Amend the following:

Name of Beacon/ Buoy	Position Lat. N Long. E Deg Min	Structure, Colour & Shape	Light Characteristic	Owner
NW Sudong Buoy	01°13·149' 103°43·026	Green conical	Fl(2)G.6s	MPA

Source: Maritime and Port Authority of Singapore

IV

REPRINT OF MARITIME SAFETY INFORMATION

The following Maritime Safety Information have been shortlisted, as they would be of particular interest to mariners.

TT175

VESSELS IN EAST JOHOR STRAIT ARE ADVISED TO NAVIGATE WITH PARTICULAR ALERTNESS AND CAUTION WHEN NEAR THE PROJECT AREAS OFF PULAU TEKONG, CHANGI AND MALANG PAPAN AS SHALLOW WATER AREAS EXIST. VESSELS ARE REMINDED TO PROCEED AT A SAFE SPEED AND MAINTAIN A PROPER LOOK-OUT, PARTICULARLY FOR TUGS AND BARGES NAVIGATING NEAR THE PROJECT AREAS AND PASSENGER FERRIES CROSSING BETWEEN CHANGI AND PULAU TEKONG AND VICINITY OF PASIR GUDANG.

TT273

ALL VESSELS ARE ADVISED TO NAVIGATE WITH CAUTION, COMPLY WITH THE COLREGS, MAINTAIN VHF RADIO WATCH AND LISTEN TO TRAFFIC INFORMATION WHEN NAVIGATING IN THE SINGAPORE STRAIT AND PORT WATERS. MARINERS ARE ALSO ADVISED TO KEEP A GOOD LOOKOUT OF FREQUENT FERRIES CROSSING THE SINGAPORE STRAIT.

TT363 (AMENDED ON 140821UTC APRIL 2019)

MARINERS ARE REMINDED NOT TO ANCHOR IN ALL AREAS IN THE TSS, INCLUDING PRECAUTIONARY AREAS OF THE STRAITS OF MALACCA AND SINGAPORE AS WELL AS BETWEEN THE LANDWARD LIMITS OF THE TSS AND APPROACHES TO THE PORTS. VESSELS ENTERING ANY PORT IN ANY LITTORAL STATES ARE TO ANCHOR IN THE ANCHORAGES DESIGNATED BY THE RESPECTIVE LITTORAL STATES. MARINERS ARE ALSO REMINDED THAT EVERY CARE SHOULD BE TAKEN TO AVOID ANCHORING IN THE VICINITY OF SUBMARINE CABLES OR PIPELINES.

TT399

VESSELS ARRIVING TO SINGAPORE OR TRANSITING THROUGH THE STRAIT ARE RECOMMENDED TO UPDATE THEIR DESTINATION ACCURATELY IN THE AIS TO ENHANCE SITUATIONAL AWARENESS FOR OTHER TRAFFIC IN THE VICINITY. EG: SG-PEGBB FOR PILOT EASTERN BOARDING GROUND BRAVO.

TT418

WEST BOUND DEEP DRAFT VESSELS AND VLCCS ARE REMINDED TO COMPLY WITH THE RULES OF VESSELS NAVIGATING THROUGH THE STRAITS OF MALACCA AND SINGAPORE(SOMS). THEY SHALL ALLOW FOR AN UKC OF AT LEAST 3.5 METRES AT ALL TIMES DURING THE ENTIRE PASSAGE THROUGH THE SOMS AND AS FAR AS IT IS SAFE & PRACTICABLE, PROCEED AT A SPEED OF NOT MORE THAN 12 KTS OVER THE GROUND IN THE WESTBOUND LANE OF THE SINGAPORE STRAIT (BETWEEN SOUTH OF ST JOHN'S ISLAND & RAFFLES LIGHTHOUSE).

THEY ARE ADVISED TO BROADCAST, 8 HOURS BEFORE ENTERING THE TSS, NAVIGATIONAL INFORMATION GIVING NAME, DEADWEIGHT, DRAUGHT, SPEED AND TIMES OF PASSING HORSBURGH LIGHTHOUSE AND RAFFLES LIGHTHOUSE.

TT426

ALL MARINERS ARE REMINDED TO NAVIGATE WITH CAUTION IN THE PRECAUTIONARY AREAS AND TSS, MAINTAIN A GOOD LOOKOUT FOR CROSSING TRAFFIC. VESSELS INTENDING TO CROSS THE TSS SHALL DO SO ONLY WHEN IT IS SAFE AND SHALL AT ALL TIMES COMPLY WITH THE COLREGS.

TT440

A NUMBER OF UNKNOWN VESSELS ARE OBSERVED ANCHORED IN THE TSS/PRECAUTIONARY AREA SOUTH OF TG. RAMUNIA AT APPROXIMATE POSITION 01°17.91'N, 104°14.92'E.

ALL VESSELS ARE ADVISED TO KEEP A GOOD LOOK OUT AND PROCEED WITH CAUTION WHEN PASSING THIS AREA IN THE SINGAPORE STRAIT.

TT527

RACON DELTA RADAR SIGNAL TRANSMISSION IN POSITION LAT 01°03.60'N LONG 103°38.85'E IS REPORTED NOT WORKING. ALL VESSELS ARE ADVISED TO NAVIGATE WITH EXTRA CAUTION.

TT552

A TEMPORARY EXCLUSION ZONE HAS BEEN ESTABLISHED FOR WRECK REMOVAL OPERATIONS ON THE SUNKEN VESSEL THORCO CLOUD IN THE EASTBOUND LANE OF THE SINGAPORE STRAIT. OPERATION AREA IS ABOUT 1.7NM NE OF BATU BERHANTI BEACON AND INVOLVED WRECK REMOVAL VESSEL HONG BANG 6 (3FFP8).

THE 24 HOURS OPERATIONS ARE SCHEDULED FROM 18 JUN TO 31 AUG 2019. THE 400MWIDE WORKING AREA WILL BE MARKED BY THE FOLLOWING BUOYS (WGS84):

LAT (N)	LONG (E)	CARDINAL MARK	LIGHT (WHITE), RANGE (NM)
01 12.258	103 53.919	TC1 WEST	Q(9)10S, 6 NM
01 12.488	103 54.100	TC2 NORTH	Q, 6 NM
01 13.051	103 55.042	TC3 NORTH	Q, 6 NM
01 12.270	103 54.156	TC4 SOUTH	Q(6)+LFL10S, 6 NM
01 12.801	103 55.040	TC5 SOUTH	Q(6)+LFL10S, 6 NM

CHARTS AFFECTED: SP1/GSP1, 202, 502, BA4037 AND BA4041. MARINERS ARE ADVISED TO NAVIGATE WITH CAUTION AND KEEP CLEAR OF WORKING AREA.

IV

REPRINT OF MARITIME SAFETY INFORMATION

TT557

SURVEY BOAT SSE MAZU IS CONDUCTING HYDROGRAPHIC SURVEY IN THE SINGAPORE STRAITS IN THE EAST BOUND LANE BOUNDED BY THE FOLLOWING COORDINATES FROM 13 JULY 2019 TO 26 JULY 2019, DAYLIGHT HOURS ONLY.

A	01°12'46.265"N	103°26'53.392"E
B	01°11'41.399"N	103°33'57.222"E
C	01°11'51.710"N	103°34'19.161"E
D	01°11'50.964"N	103°34'36.484"E
E	01°11'42.653"N	103°35'13.309"E
F	01°11'28.113"N	103°37'51.344"E
G	01°10'20.793"N	103°39'44.708"E

TT562

LAYING OF SUBSEA PIPELINE AT WEST JURONG CHANNEL AND PESEK BASIN FROM 20 JUN 2019 TO 30 OCT 2019.

VESSELS ARE ADVISED TO NAVIGATE WITH CAUTION AND PROCEED AT SAFE SPEED IN THE AREA. PLEASE REFER TO PMN 059 OF 2019.

TT572

AN UNAUTHORISED BOARDING WAS REPORTED ON 25 JULY AT 0703 HRS N POSITION 01°13.50'N 103°31.63'E. ALL VESSELS PASSING THE VICINITY ARE ADVISED TO KEEP A VIGILANT WATCH, LOOK OUT FOR SUSPICIOUS FAST MOVING CRAFT APPROACHING THEIR VESSEL AND NAVIGATE WITH EXTRA CAUTION.

TT961

VESSELS INTENDING TO CROSS THE TRAFFIC SEPARATION SCHEME (TSS) OR PRECAUTIONARY AREAS IN THE SINGAPORE STRAIT DURING THE HOURS OF DARKNESS ARE RECOMMENDED TO DISPLAY THE NIGHT SIGNALS CONSISTING OF 3 ALL ROUND GREEN LIGHTS IN A VERTICAL LINE AS DETAILED IN THE MARITIME AND PORT AUTHORITY OF SINGAPORE'S PORT MARINE CIRCULAR, 04 OF 2013 DATED 7 MAY 2013.

SR123 (AMENDED 170105UTC APRIL 2019)

ALL VESSELS ARE ADVISED TO MAINTAIN A CONSTANT VISUAL AND RADAR WATCH FOR SMALL CRAFT AND REPORT ANY SUSPICIOUS ACTIVITIES IN THE SINGAPORE STRAIT TO VTIS SINGAPORE.

ISSUED BY SINGAPORE PORT OPERATIONS CONTROL CENTRE (as at 31st July 2019)


V
EXTRACT OF ADMIRALTY NOTICES TO MARINERS
FOR DUAL-BADGED CHARTS

These notices can also be accessed directly from UKHO Website:

3492* SINGAPORE - Buoyage.

Source: Maritime and Port Authority of Singapore

Chart 4030 [*previous update 2586/19*] WGS84 DATUM

Move	 <i>Fl.Y.4s</i> F2-DDJV-2, from:	1° 15·544'N, 103° 38·124'E
	to:	1° 15·605'N, 103° 38·110'E



Delete	 <i>Fl.Y.4s</i> F2-DDJV-1, from:	1° 15·543'N, 103° 37·671'E
	symbol, mooring can buoy, <i>Fl(4)Y.15s</i> DDJV-MB-1	1° 14·456'N, 103° 37·959'E
	symbol, mooring can buoy, <i>Fl(4)Y.15s</i> DDJV-MB-2	1° 14·457'N, 103° 38·131'E


Chart 4033 [*previous update 1909/19*] WGS84 DATUM

Move	 <i>Fl.Y.4s</i> F2-DDJV-2, from:	1° 15·544'N, 103° 38·124'E
	to:	1° 15·605'N, 103° 38·110'E

Delete	 <i>Fl.Y.4s</i> F2-DDJV-1, from:	1° 15·543'N, 103° 37·671'E
--------	-------------------------------------------------------------------------------------------------------------------	----------------------------


3492* SINGAPORE - Buoyage. (continued)

Chart 4038 [*previous update 1978/19*] WGS84 DATUM

Move	 <i>Fl.Y.4s</i> F2-DDJV-2, from:	1° 15·54'N, 103° 38·12'E
	to:	1° 15·61'N, 103° 38·11'E

Replace	 <i>Kolek</i> , with,  <i>Fl.R.2·5s Kolek</i>	1° 18·84'N, 103° 36·88'E
---------	---------------------------------------------------------------------------------------------------------------------------------------------------------------------------------------------------------------------	--------------------------

Delete	 <i>Fl.Y.4s</i> F2-DDJV-1	1° 15·54'N, 103° 37·67'E
--------	--------------------------------------------------------------------------------------------------------------	--------------------------

	 <i>Fl(4)Y.15s</i> DDJV-MB-1	1° 14·46'N, 103° 37·96'E
--	-----------------------------------------------------------------------------------------------------------------	--------------------------

	 <i>Fl(4)Y.15s</i> DDJV-MB-2	1° 14·46'N, 103° 38·13'E
--	-----------------------------------------------------------------------------------------------------------------	--------------------------

Chart 4040 [*previous update 2598/19*] WGS84 DATUM

to: 1° 15·61'N, 103° 38·11'E

Replace	 <i>Kolek</i> , with,  <i>Fl.R.2·5s Kolek</i>	1° 18·84'N, 103° 36·88'E
---------	---------------------------------------------------------------------------------------------------------------------------------------------------------------------------------------------------------------------	--------------------------

Delete	 <i>Fl.Y.4s</i> F2-DDJV-1	1° 15·54'N, 103° 37·67'E
--------	--------------------------------------------------------------------------------------------------------------	--------------------------

	 <i>Fl(4)Y.15s</i> DDJV-MB-1	1° 14·46'N, 103° 37·96'E
--	-----------------------------------------------------------------------------------------------------------------	--------------------------

	 <i>Fl(4)Y.15s</i> DDJV-MB-2	1° 14·46'N, 103° 38·13'E
--	-----------------------------------------------------------------------------------------------------------------	--------------------------

V

EXTRACT OF ADMIRALTY NOTICES TO MARINERS FOR DUAL-BADGED CHARTS

These notices can also be accessed directly from UKHO Website:

3557* SINGAPORE - Rocks. Depth.

Source: Maritime and Port Authority of Singapore

Chart 4032 [*previous update 1932/19*] WGS84 DATUM

Insert + (11₄) (a) 1° 15·148'N, 103° 44·421'E

Delete + (11₅), close SE of: (a) above

Chart 4034 [*previous update 1932/19*] WGS84 DATUM

Insert + (11₄) (a) 1° 15·148'N, 103° 44·421'E

Delete + (11₅), close SE of: (a) above

Chart 4039 [*previous update 1932/19*] WGS84 DATUM

Insert depth, 22₈ 1° 13·04'N, 103° 40·98'E

Chart 4040 [*previous update 3492/19*] WGS84 DATUM

Insert depth, 22₈ 1° 13·04'N, 103° 40·98'E

Replace + (11₅) with + (11₄) 1° 15·15'N, 103° 44·42'E

3551(T)/19 SINGAPORE STRAIT - Restricted area. Works. Buoyage.

Source: Maritime and Port Authority of Singapore

1. A temporary exclusion zone for salvage operations on the sunken vessel 'Thorco Cloud' is established in the Precautionary Area of the Singapore Strait (off St. John's Islands/Pulau Sambu) and in the east-bound traffic lane of the Singapore Strait (off Changi/ Pulau Batam) Traffic Separation Scheme (STRAITREP Sector 8).

2. The 400m wide exclusion zone is marked by the following buoys:

<i>Designation</i>	<i>Buoy Type</i>	<i>Characteristic</i>	<i>Position</i>
TC-1	West cardinal	<i>Q(9)10s</i>	1° 12·258'N, 103° 53·919'E
TC-2	North cardinal	<i>Q</i>	1° 12·488'N, 103° 54·100'E
TC-3	North cardinal	<i>Q</i>	1° 13·051'N, 103° 55·042'E
TC-4	South cardinal	<i>Q(6)+LFl.10s</i>	1° 12·270'N, 103° 54·156'E
TC-5	South cardinal	<i>Q(6)+LFl.10s</i>	1° 12·801'N, 103° 55·040'E

3. Mariners are advised to navigate with caution in the area.

4. Navigational warning broadcasts will be promulgated by Singapore VTIS on VHF CH 09 and NAVTEX. Mariners are to maintain a listening watch.

(WGS84 DATUM)

Charts affected - 4037 - 4041

V
EXTRACT OF ADMIRALTY NOTICES TO MARINERS
FOR DUAL-BADGED CHARTS

These notices can also be accessed directly from UKHO Website:

3613(T)/19 SINGAPORE - Buoy. Light-beacon.

Source: Maritime and Port Authority of Singapore

1. *The Outer Shoal light-buoy, in position $1^{\circ} 15' 015''\text{N}$, $103^{\circ} 51' 808''\text{E}$, has been removed for maintenance.
2. A green conical light-buoy, *Fl.G.5s*, has been established, until further notice, in position $1^{\circ} 15' 016''\text{N}$, $103^{\circ} 51' 777''\text{E}$.
3. Mariners are advised to navigate with caution in the area.
4. Former Notice 2612(T)/19 has been cancelled.

*Indicates new or revised entry.

(WGS84 DATUM)

Charts affected - 4037 - 4040 - 4041

Update to Admiralty Notices to Mariners No. 30 of 2019 dated 25th July 2019

HYDROGRAPHIC NOTE - Instructions

1. Mariners are requested to notify the Chief Hydrographer, Maritime and Port Authority of Singapore, when new or suspected dangers to navigation are discovered, changes are observed in aids to navigation or where corrections to nautical publications may be necessary. Reports, which cannot be confirmed or are lacking in certain details should not be withheld.
2. Any ambiguities of time, positioning and depth should be stressed and any firm expectation of being able to check the information provided on a following voyage should be mentioned.
3. Mariners using satellite position fixing systems, eg. GPS, should provide details of equipment and datum used (where applicable). Where bearings (true or magnetic) are taken visually or by radar to fix a position, it should include more than two objects in order to provide a check on its accuracy. A position may also be defined by bearing and distance from a conspicuous object eg. beacon, lighthouse etc.
4. The note should include a tracing or a digital image of the chart used and the details should be clearly marked.
5. Echo sounders frequently register greater depths than the advertised maximum depth for the equipment, eg. a trace appearing at 50 metres may be in fact be 550 metres or even 1050 metres for equipment whose maximum depth is 500 metres. Erroneous depths caused by 2nd transmission error can usually be recognised by the following:
 - (a) the tracing being weaker than normal for the depth registered,
 - (b) the trace appearing to pass through the transmission line,
 - (c) the feathery nature of the trace.
6. Upon receipt of a hydrographic note, a Notice to Mariners may be issued. The sender's vessel or name is quoted as the source unless the same information is also received in foreign Notices to Mariners.
7. Reports of shoals, uncharted dangers and defects in aids to navigation may also be made to the appropriate Singapore Port Operations Control Centre on VHF Channels 10, 12, 14, 68 or 73.

HYDROGRAPHIC NOTE

To:

Chief Hydrographer
Maritime and Port Authority of Singapore
7B Keppel Road #20-00 Tanjong Pagar Complex
Singapore 089055

Tel : (65) 6325 2027
Fax : (65) 6226 1076
Email : hydrographic@mpa.gov.sg

Sender's Contact Details :

Date :

Name of Vessel :

Address of Sender :

Tel : Fax :

Email :

Nature of Observation :

General Location :

Subject :

Position : Lat. Long.

Charts Used :

Date & Time of Observation :

Details :
.....
.....
.....

Attachment :

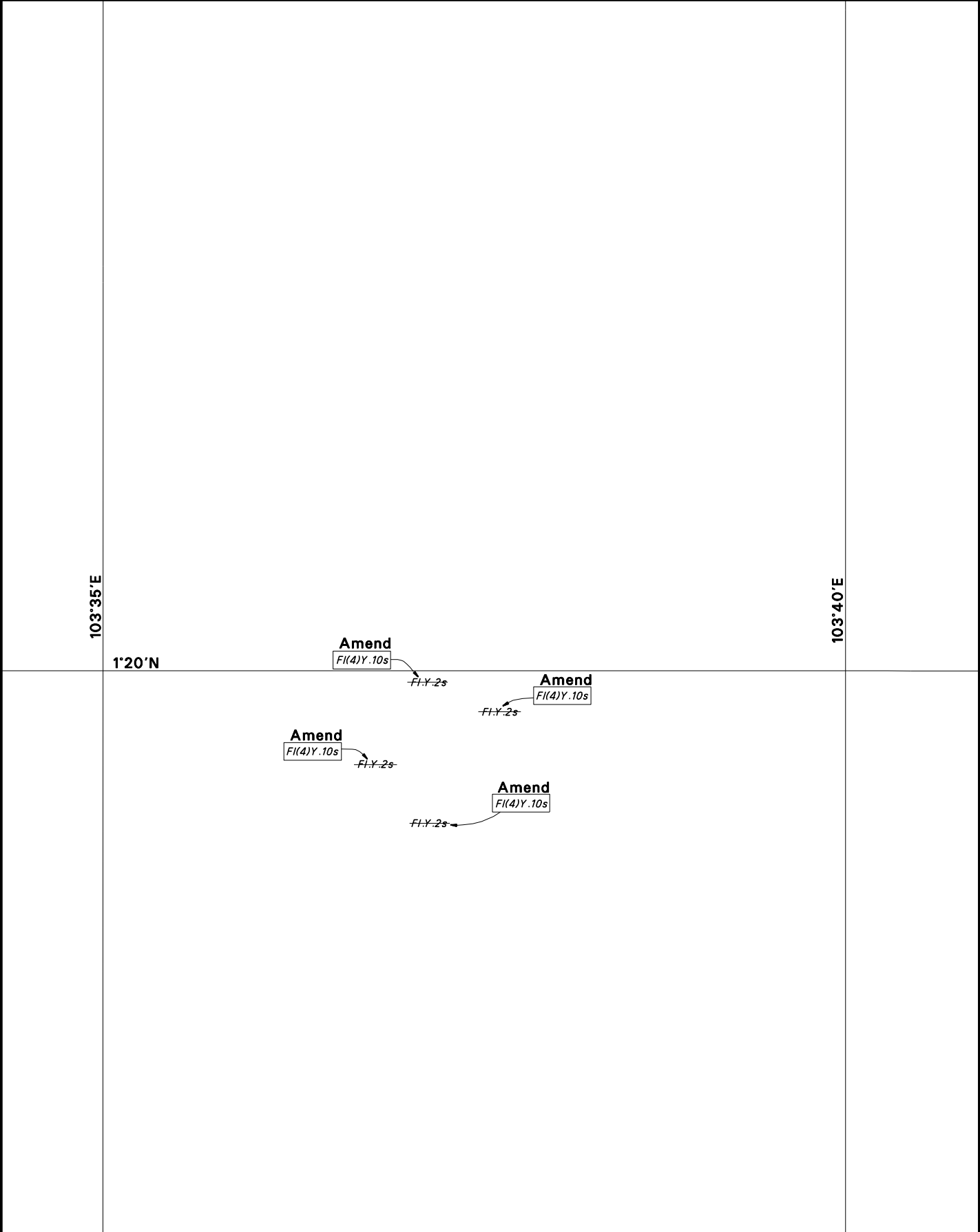
Equipment Used :

Type of Position Fixing : GPS / DGPS Others :

Type of Echo Sounder :

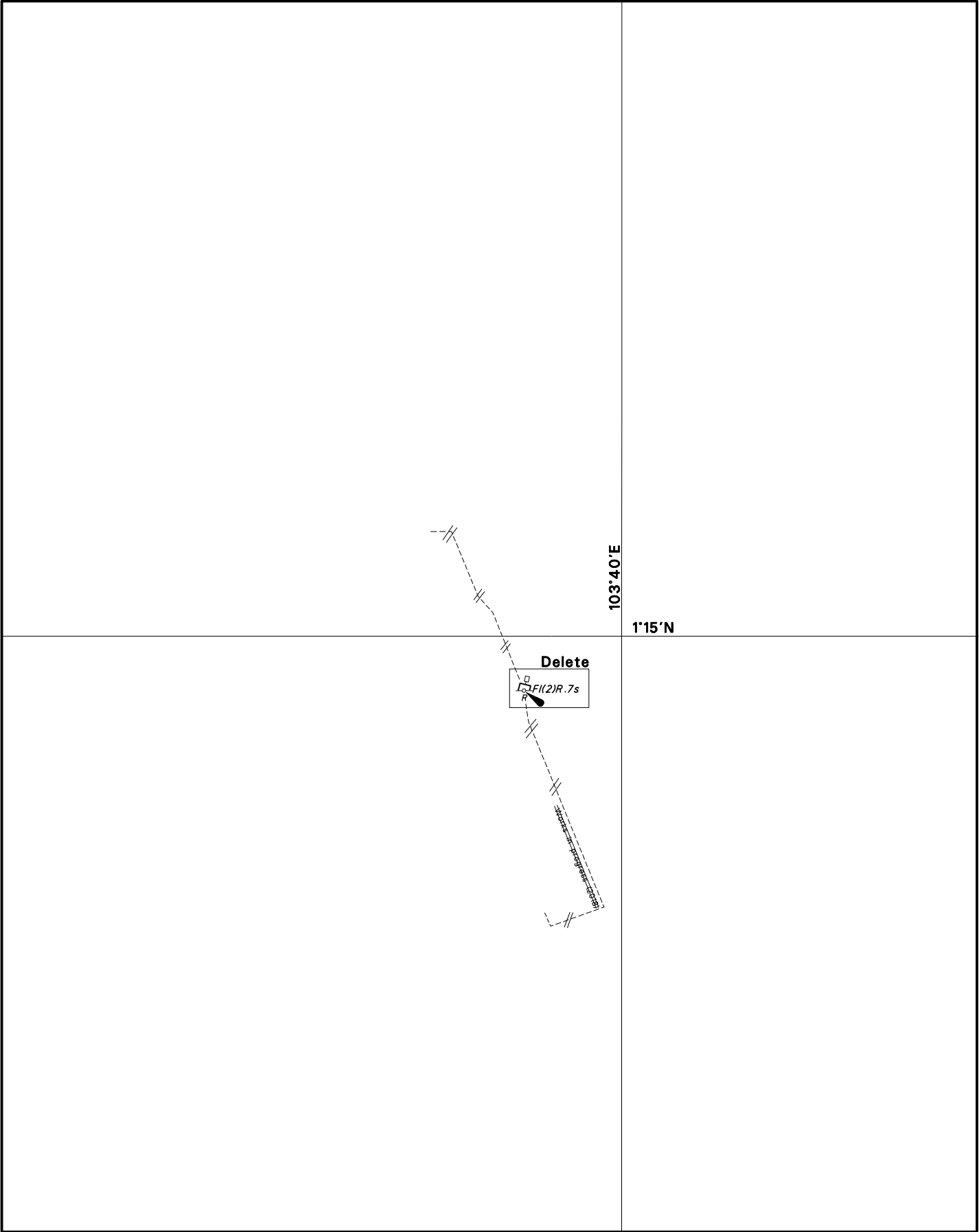
Name and Signature :

Ship's/Company's Stamp :



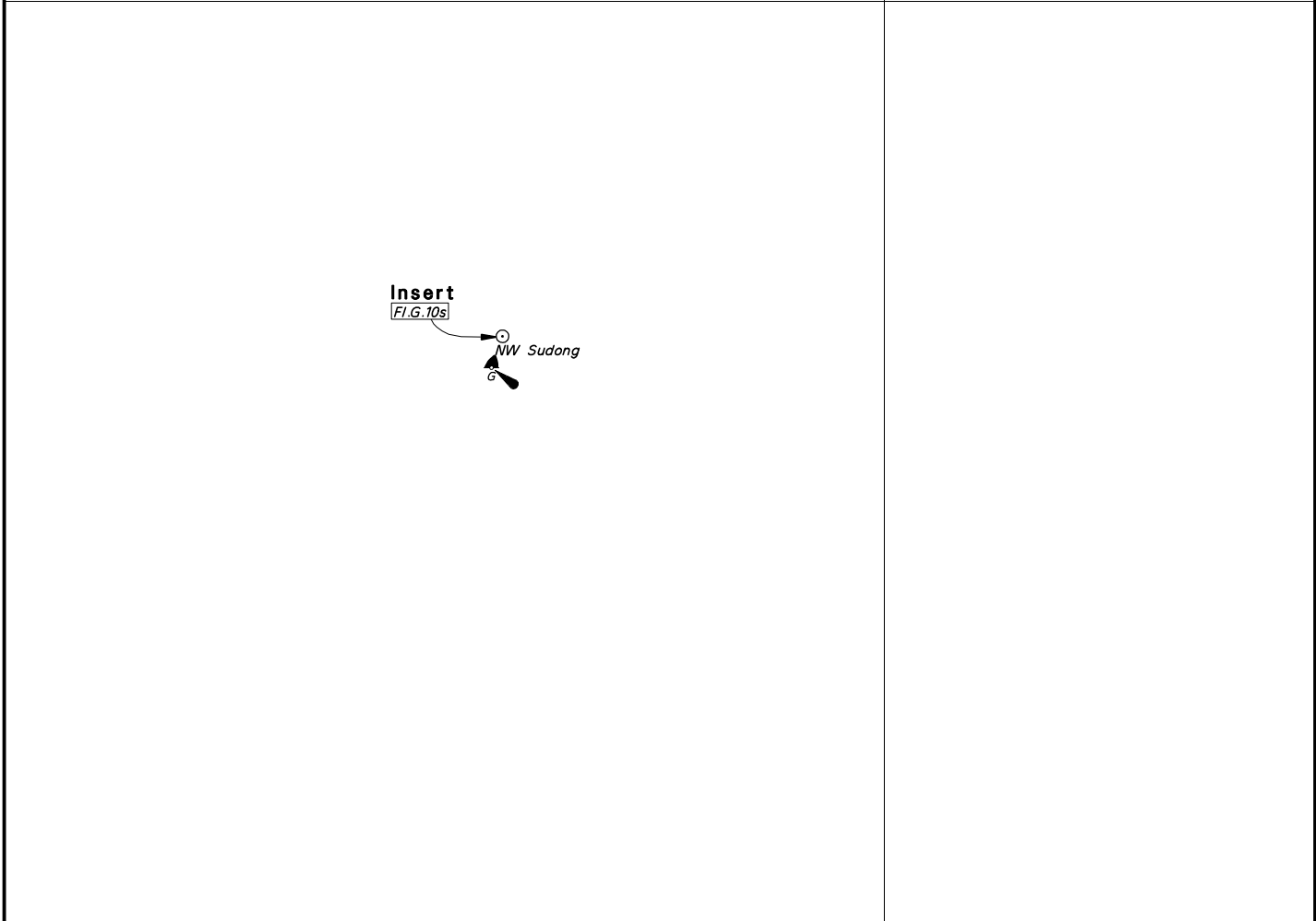
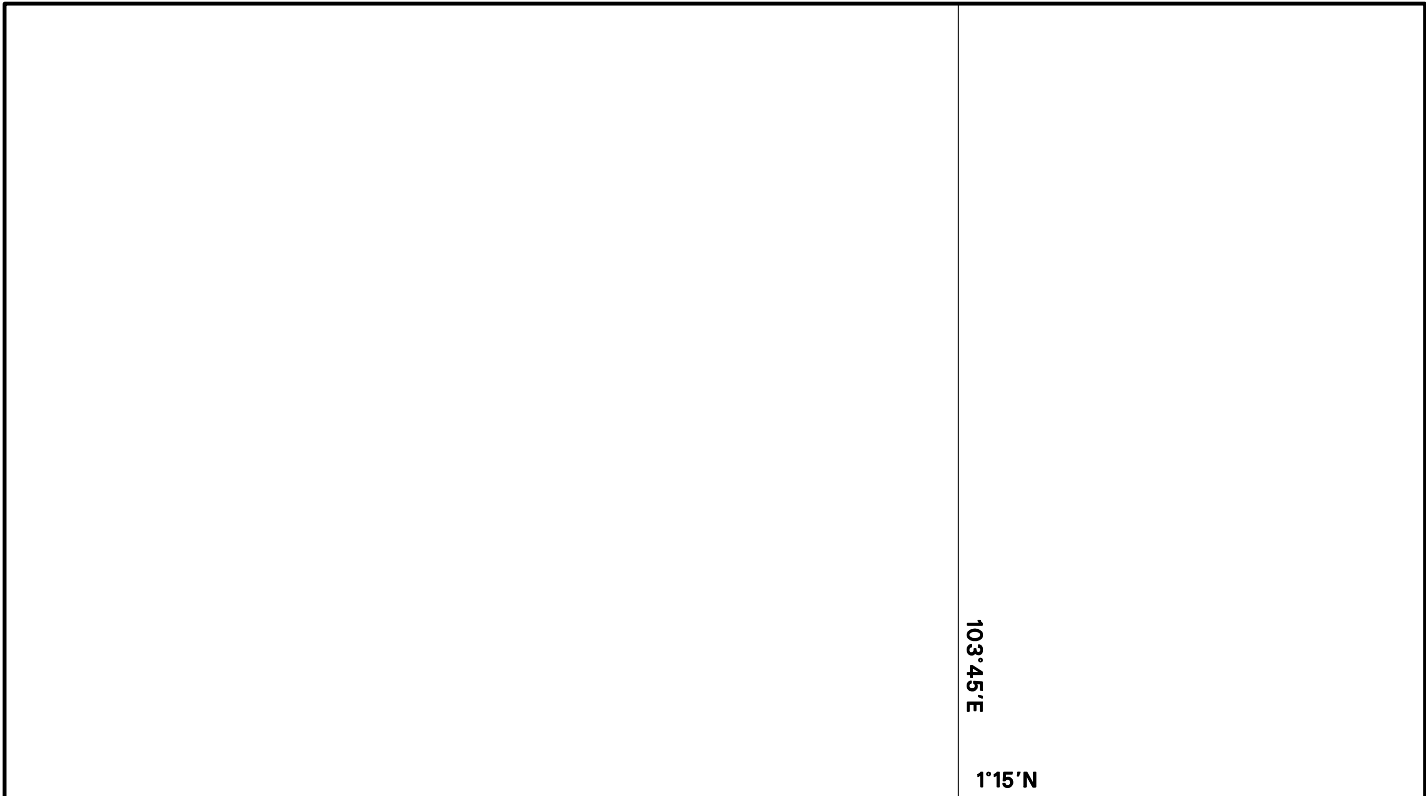
CORRECTION NO.	SNM EDN NO.	LAST CORR N NO.	CHART NO.	Location on Chart		
81/2019	8/2019	76/2019	GSP1/SP1	X		

Caution: some computer printers might distort the tracings.
Users are advised to check and, if necessary, adjust settings on the printer



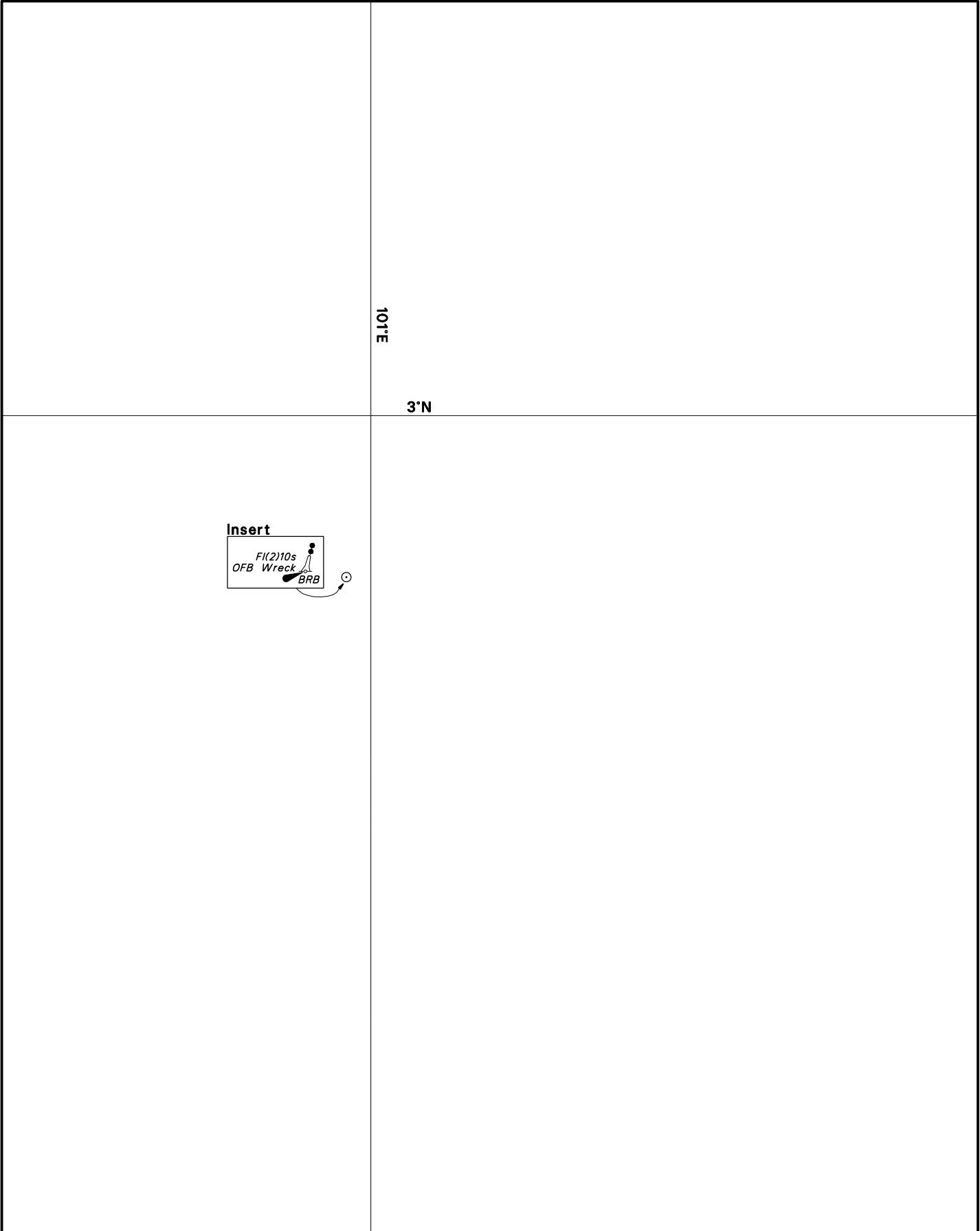
CORRECTION NO.	SNM EDN NO.	LAST CORR N NO.	CHART NO.	Location on Chart		
82/2019	8/2019	81/2019	GSP1/SP1	X		

Caution: some computer printers might distort the tracings.
Users are advised to check and, if necessary, adjust settings on the printer



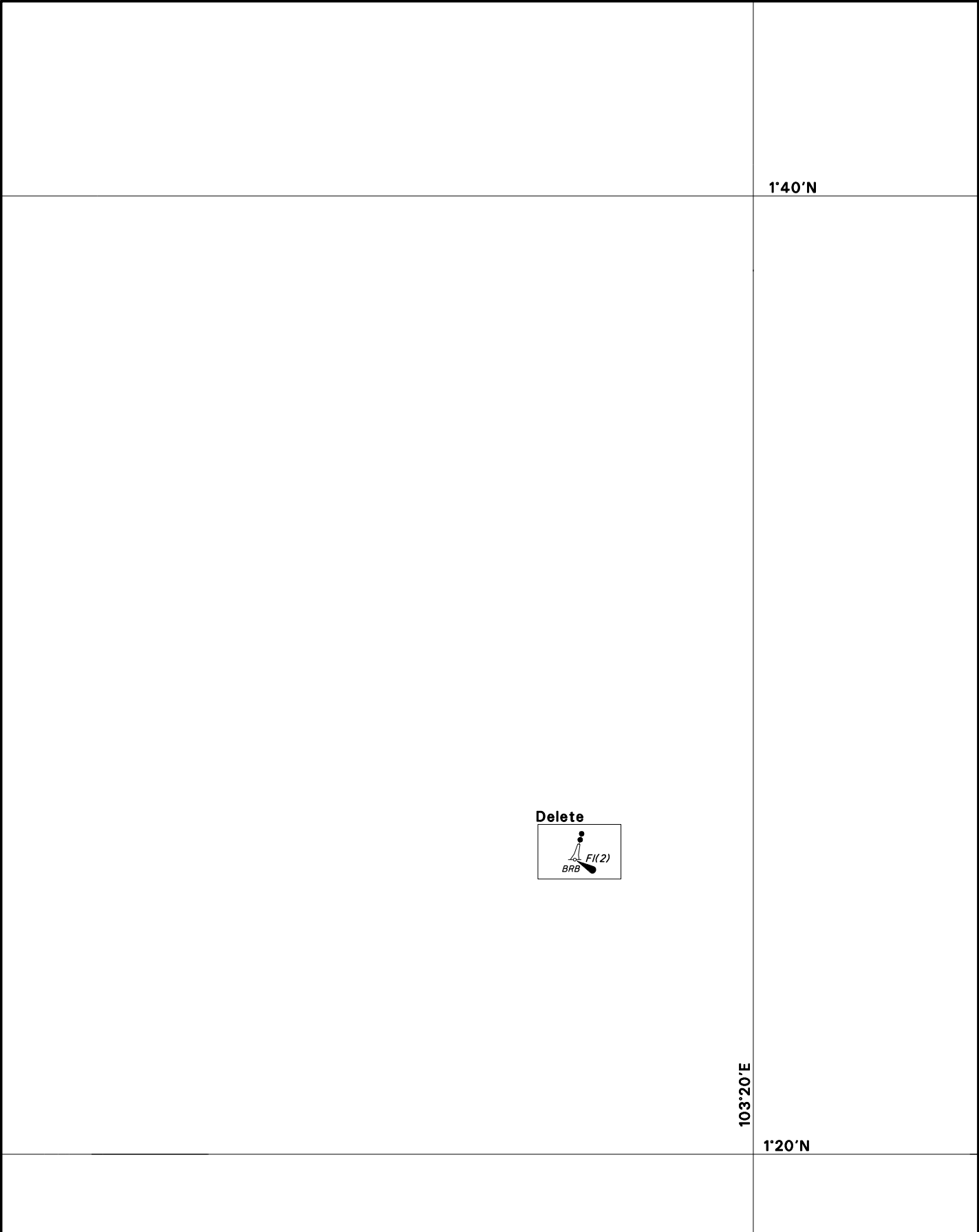
CORRECTION NO.	SNM EDN NO.	LAST CORR N NO.	CHART NO.	Location on Chart		
83/2019	8/2019	82/2019	GSP1/SP1	X		

Caution: some computer printers might distort the tracings.
Users are advised to check and, if necessary, adjust settings on the printer



CORRECTION NO.	SNM EDN NO.	LAST CORR N NO.	CHART NO.	Location on Chart		
				X		
84/2019	8/2019	63/2019	200			

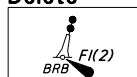
Caution: some computer printers might distort the tracings.
Users are advised to check and, if necessary, adjust settings on the printer



CORRECTION NO.	SNM EDN NO.	LAST CORR N NO.	CHART NO.	Location on Chart		
85/2019	8/2019	77/2019	201			X

Caution: some computer printers might distort the tracings.
Users are advised to check and, if necessary, adjust settings on the printer

Delete

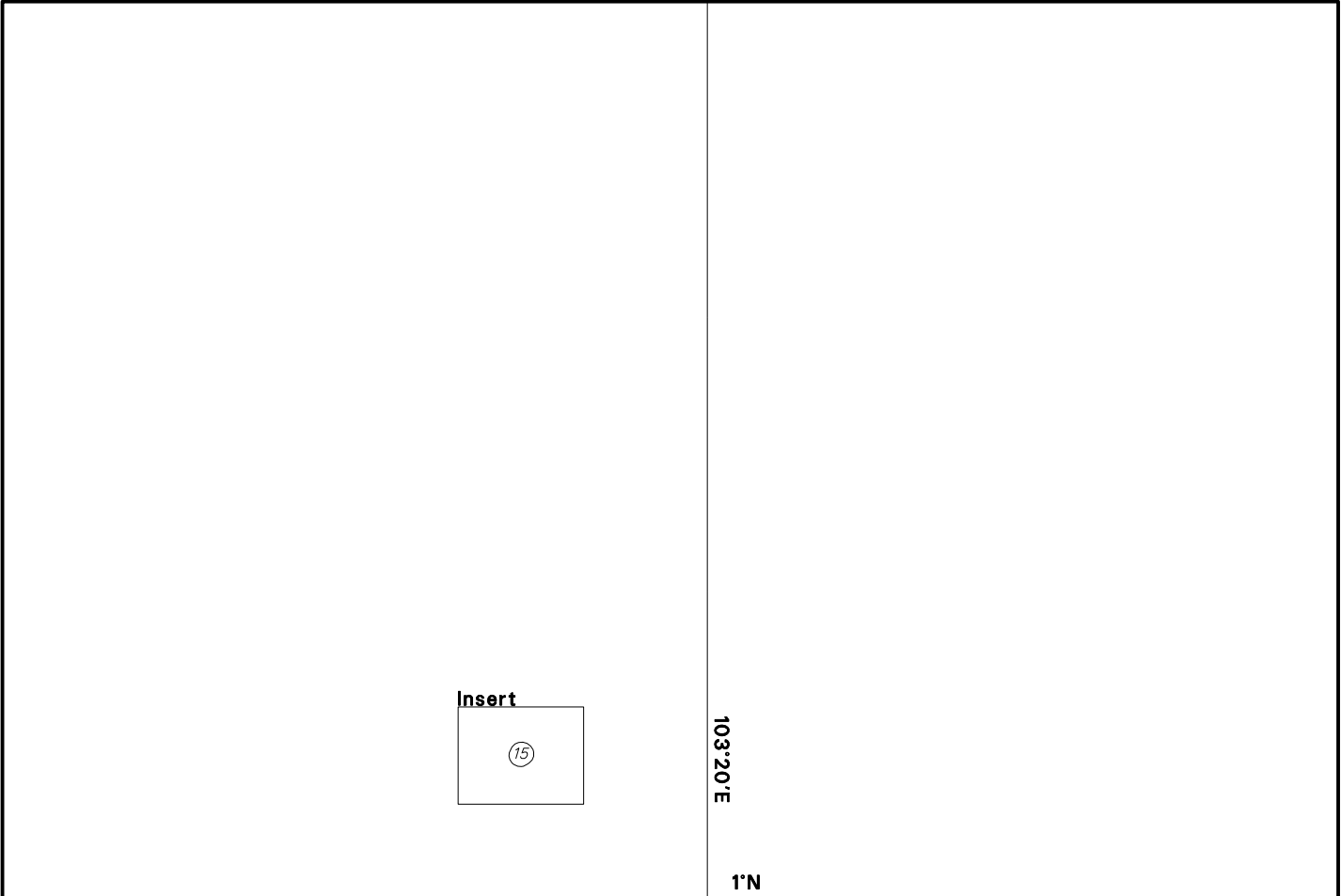


103°20'E

1°20'N

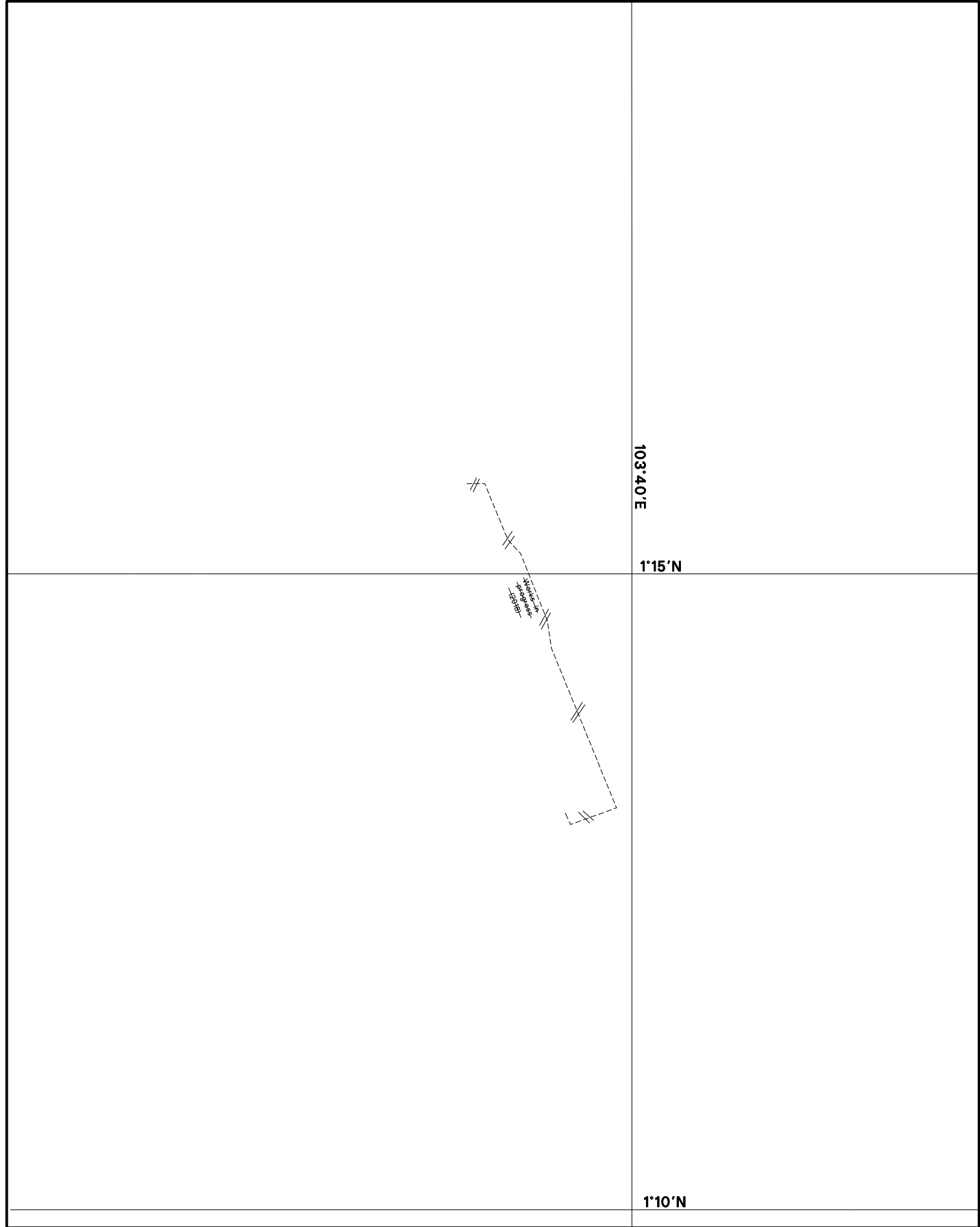
CORRECTION NO.	SNM EDN NO.	LAST CORR N NO.	CHART NO.	Location on Chart		
				X		
85/2019	8/2019	77/2019	202			

Caution: some computer printers might distort the tracings.
Users are advised to check and, if necessary, adjust settings on the printer



CORRECTION NO.	SNM EDN NO.	LAST CORR N NO.	CHART NO.	Location on Chart		
86/2019	8/2019	85/2019	202	X		

Caution: some computer printers might distort the tracings.
Users are advised to check and, if necessary, adjust settings on the printer



CORRECTION NO.	SNM EDN NO.	LAST CORR N NO.	CHART NO.	Location on Chart		
83/2019	8/2019	77/2019	500			X

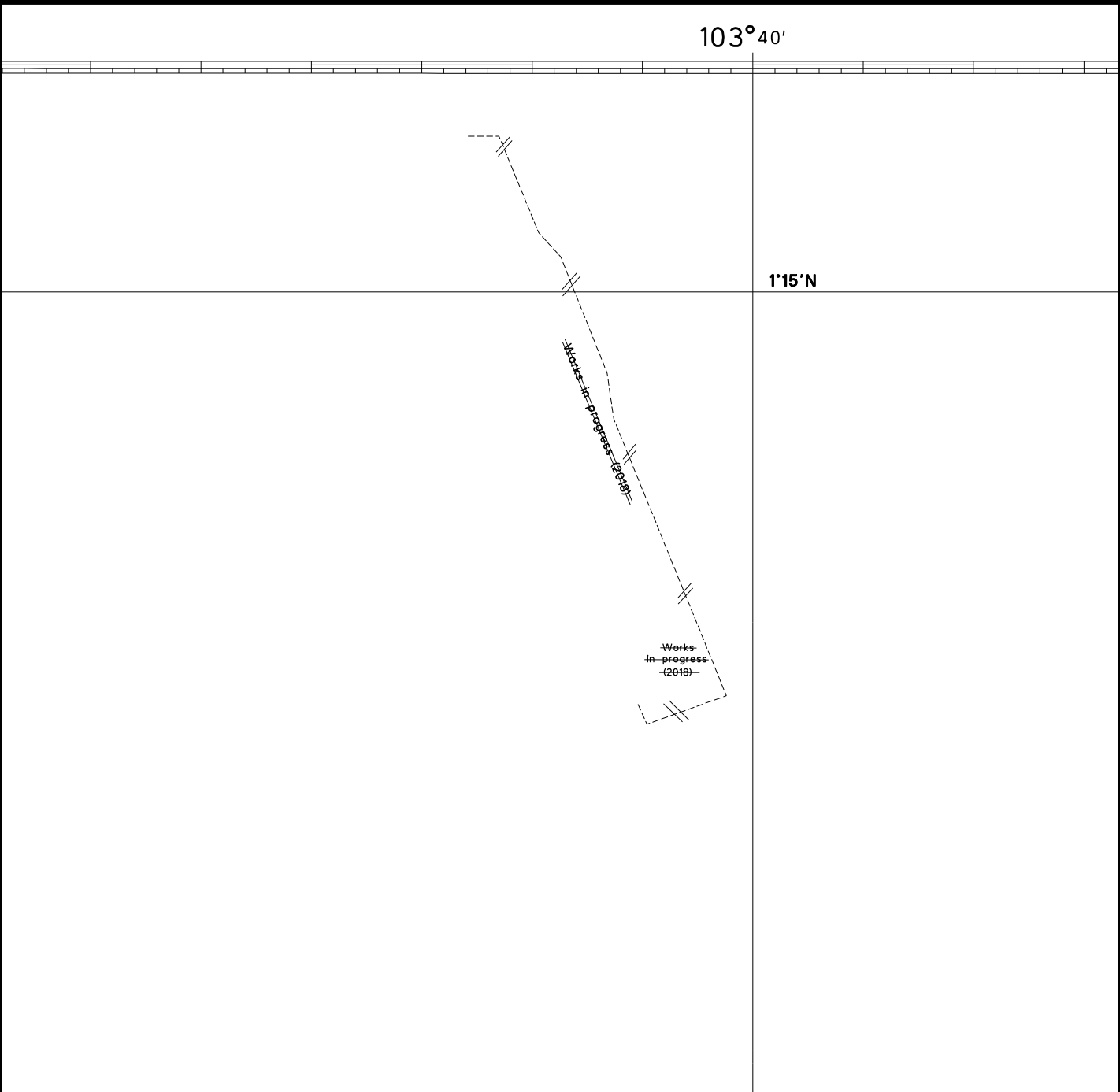
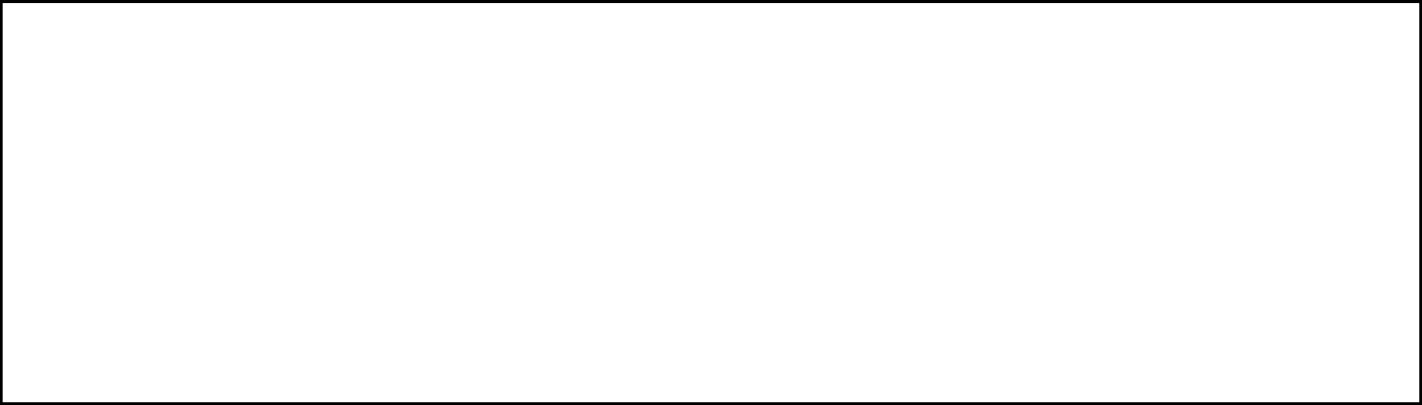
Caution: some computer printers might distort the tracings.
Users are advised to check and, if necessary, adjust settings on the printer



A diagram of a single neuron. It has an input labeled *BRB* and an output labeled *FI(2)*. The neuron is represented by a circle with a vertical line extending upwards from the top, ending in a small circle. A horizontal line extends from the right side of the circle, ending in a small circle. A diagonal line extends from the bottom-left of the circle, ending in a small circle. A small circle is also located at the top of the vertical line.

Caution: some computer printers might distort the tracings.
Users are advised to check and, if necessary, adjust settings on the printer

Caution: some computer printers might distort the tracings.
Users are advised to check and, if necessary, adjust settings on the printer



CORRECTION NO.	SNM EDN NO.	LAST CORR N NO.	CHART NO.	Location on Chart		
				X		
83/2019	8/2019	33/2019	501			

Caution: some computer printers might distort the tracings.
Users are advised to check and, if necessary, adjust settings on the printer