



SINGAPOREAN NOTICES TO MARINERS

CONTENT		Page
I	Index of Charts & Publications Affected	99
II	Charts Corrections New Charts Publications	100
III	Marine Information	103
IV	Reprints of Radio Navigational Warnings	104
V	Reprint of Admiralty Notices to Mariners for Dual Badged Charts	105

The monthly Notices to Mariners contain corrective information affecting charts published by the Hydrographic Department, Maritime and Port Authority of Singapore. The information contained in these Notices should be inserted on the charts affected. Notices under Section II apply only to the particular Singapore Chart(s) indicated.

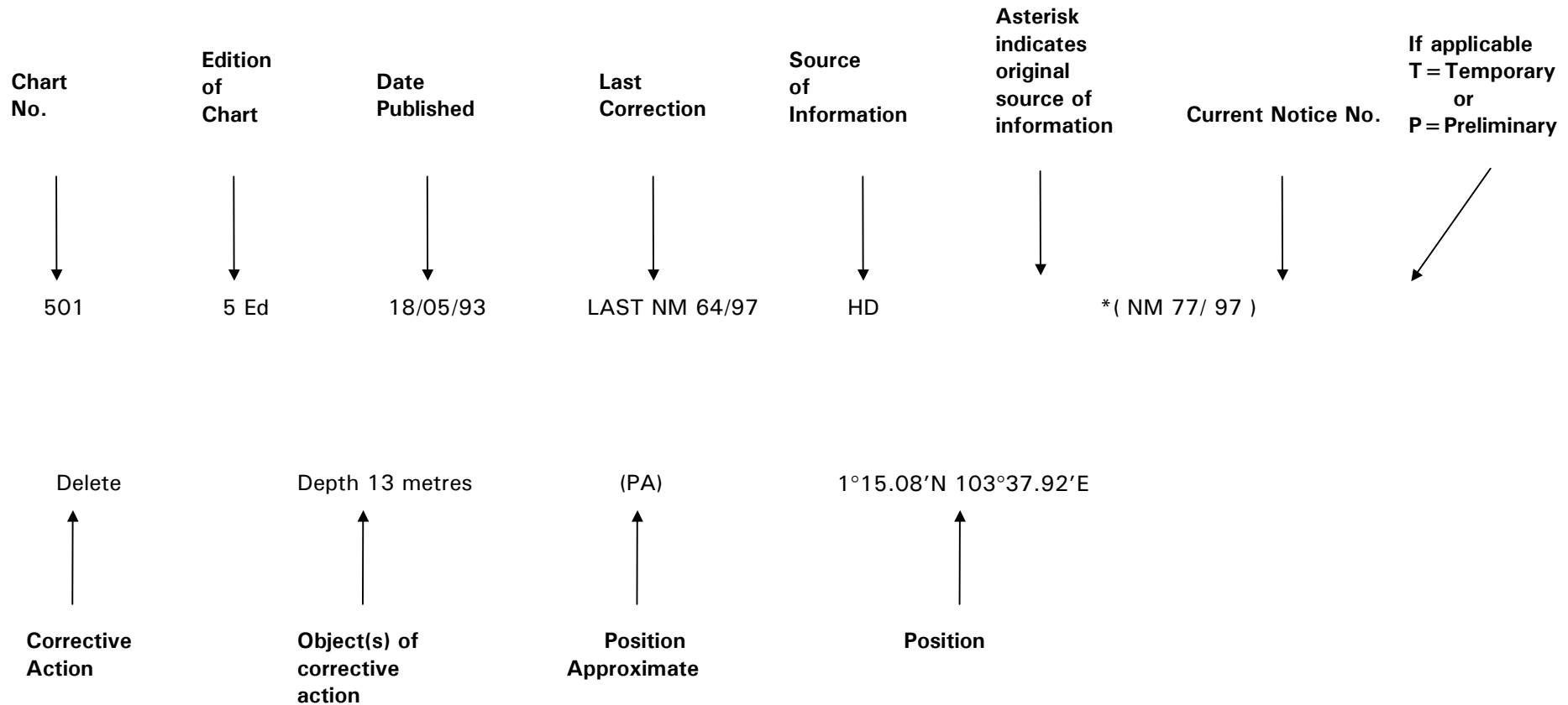
Mariners are requested to notify the Chief Hydrographer, Maritime and Port Authority of Singapore, immediately on the discovery of new dangers or suspected dangers to navigation and of changes or defects in aids to navigation.

Copies of these notices can be obtained gratis from the Hydrographic Department, Maritime and Port Authority of Singapore or from Motion Smith telephone number (65) 62205098. The notices can also be accessed from MPA webpage: www.mpa.gov.sg/home/publications/noticesmari.html

Hydrographic Department
Maritime and Port Authority of Singapore
P.O. Box 313
PSA Building Post Office
Singapore 911141
Tel : (65) 63751550
Fax : (65) 62787646

EXPLANATION OF FORMAT

The elements of a typical chart correction are explained below.



An asterisk (*) preceding a notice number indicates that the information is based on original Singapore source. The capital letter (T) or (P) denotes Temporary or Preliminary respectively.

Bearings are referred to the True Compass in degrees clockwise from 000° to 359°; those related to lights are from seaward. Heights are above mean sea level; only elevations of lights are above mean higher high water, or mean high water springs, as appropriate.

All positions are in WGS 84.




SECTION I
INDEX OF CHARTS AND PUBLICATIONS AFFECTED



NOTICES	SINGAPORE CHARTS	PAGE	NOTICES	SINGAPORE CHARTS	PAGE
*60	Numerical Index to Notices to Mariners for 2004	100			
*61	SP1, GSP1	100			
	500	101			
	501	101			
*62	SP1, GSP1	100			
	500	101			
	501	101			
*63	202	100			
	503	101			
*64	202	100			
	502	101			
*65T	SP1, GSP1	102			
*66	Updating of Publication "SINGAPORE PORT INFORMATION EDITION 2004"	103			

SECTION II SINGAPORE NOTICES

*(NM60/2004) NUMERICAL INDEX TO NOTICES TO MARINERS OF 2004 (1 TO 59)


CHART NO.	PUBLISHED	YEAR	NOTICES NO.
SP1,GSP1	6 Ed 10/02/04	2004	14(NE)-31-32-33-34-38-41-42-50-52-53-54-56-58
200	1Ed 01/10/98	2004	Nil
201	2Ed 15/09/03	2004	10-44-45
202	3Ed 02/01/02	2004	10-17-20-21-24-25-26-29-39-40-43-49-50-52
500	3Ed 15/10/02	2004	10-11-15-17-26-27-30-38-43
501	3Ed 15/09/03	2004	11-15-16-18-19-20-26-30-38-39-55-57
502	2Ed 15/11/00	2004	9-21-24-25-28-29-32-39-40-49-50-52-57-58
503	1Ed 01/10/98	2004	29

SP1, GSP1	6Ed 10/02/04 Last NM 58/2004	HD/DB34/13/04	*(NM 61/2004)
Insert	 PKHDB-16A, VQ(9)10s	1°13.13'N	103°36.07'E
		HD/DB34/12/04	*(NM 62/2004)
Substitute	 PKHDB-16, Fl.Y.2s for  PKHDB-16, VQ(9)10s	1°13.08'N	103°36.29'E

202	3Ed 02/01/02 Last NM 52/2004	Admiralty Chart 3831 Edition No. 9	*(NM 63/2004)
Substitute	Visibility range of light 13M for 20M	1°13.16'N	104°34.62'E
		HD/ HY Code A00103104	*(NM 64/2004)
Substitute	 Wk for  Wk	1°14.86'N	103°55.35'E

**SECTION II
SINGAPORE NOTICES**

500 **3Ed 15/10/02 Last NM 43/2004** **HD/DB34/13/04** ***(NM 61/2004)**

Insert  **PKHDB-16A, VQ(9)10s** 1°13.13'N 103°36.07'E


HD/DB34/12/04 ***(NM 62/2004)**

Substitute  **PKHDB-16, Fl.Y.2s** for
 **PKHDB-16, VQ(9)10s** 1°13.08'N 103°36.29'E


501 **3Ed 15/09/03 Last NM 57/2004** **HD/DB34/13/04** ***(NM 61/2004)**

Insert  **PKHDB-16A, VQ(9)10s** 1°13.13'N 103°36.07'E

HD/DB34/12/04 ***(NM 62/2004)**

Substitute  **PKHDB-16, Fl.Y.2s** for
 **PKHDB-16, VQ(9)10s** 1°13.08'N 103°36.29'E

502 **2Ed 15/11/00 Last NM 58/2004** **HD/ HY Code A00103104** ***(NM 64/2004)**

Substitute  **33** Wk for  **34** Wk 1°14.86'N 103°55.35'E

503 **1Ed 01/10/98 Last NM 29/2004** **Admiralty Chart 3831** ***(NM 63/2004)**
Edition No. 9

Substitute Visibility range of light **13M** for 20M 1°13.16'N 104°34.62'E

**SECTION II
TEMPORARY AND PRELIMINARY NOTICES**

SP1, GSP1	6Ed 10/02/04	HD/DB34/11/04	*(NM65T/2004)	
Insert	 ACW-B, Fl.Y.5s		1°14.25'N	103°48.77'E

**SECTION III
MARINE INFORMATION**

*(NM 66/2004) UPDATING OF PUBLICATION "SINGAPORE PORT INFORMATION EDITION 2004"

Amend the followings:

1 Page 104 - **RAFFLES SHOAL**

Name Of Beacon/ Buoy	Former Position		New Position	
	Lat. N	Long. E	Lat. N	Long. E
	Deg Min		Deg Min	
Satumu Buoy	01 09.426	103 43.412	01 09.426	103 44.412

2 Page 126 - **PASIR PANJANG WHARVES (PSA Corporation LTD) (1°16.6'N, 103°46.8'E)**

Berth	Former Length of Berth	New Length of Berth	Former Depth Alongside (Year Surveyed)	New Depth Alongside (Year Surveyed)
PW3	420m	450m	7.2m (2002)	7.0m (2002)
PW4	390m	360m	6.9m (2002)	6.9m (2002)

3 Page 99 – **NAVIGATIONAL CHANNELS – CONTROLLING DEPTHS**

Locations	Former Controlling Depth (m)	New Controlling Depth (m)
Sembawang Shipyard to Ordnance Reach	19.8	9.8
East Keppel Fairway – Deep Channel	15.2	15.4
Buran Channel	19.1	8.9
Sister's Fairway (Selat Tanjong Hakim)	15.3	10.8

**SECTION IV
REPRINT OF RADIO NAVIGATIONAL WARNINGS**

NIL

SECTION V
REPRINT OF ADMIRALTY NOTICES TO MARINERS
FOR DUAL BADGED CHART

DUAL BADGED CHARTS TO BE PUBLISHED 22 JULY 2004

<i>Chart</i>	<i>Title and other remarks</i>	<i>Scale</i>	<i>Charts to be Superseded</i>
4037	Port of Singapore, Keppel Harbour, Tanjong Pagar Terminal and Approaches. 1°12' .52N. – 1°16' .59N., 103°49' .40E. – 103°55' .34E. <i>Includes changes to depths throughout from the latest Maritime and Port Authority of Singapore surveys.</i>	1:10,000	4037

Reprinted from: Weekly Edition 26 dated 24 June 2004

2974/04* SINGAPORE STRAIT – Singapore – Changi East Eastwards – Johor Shoal – Depths.

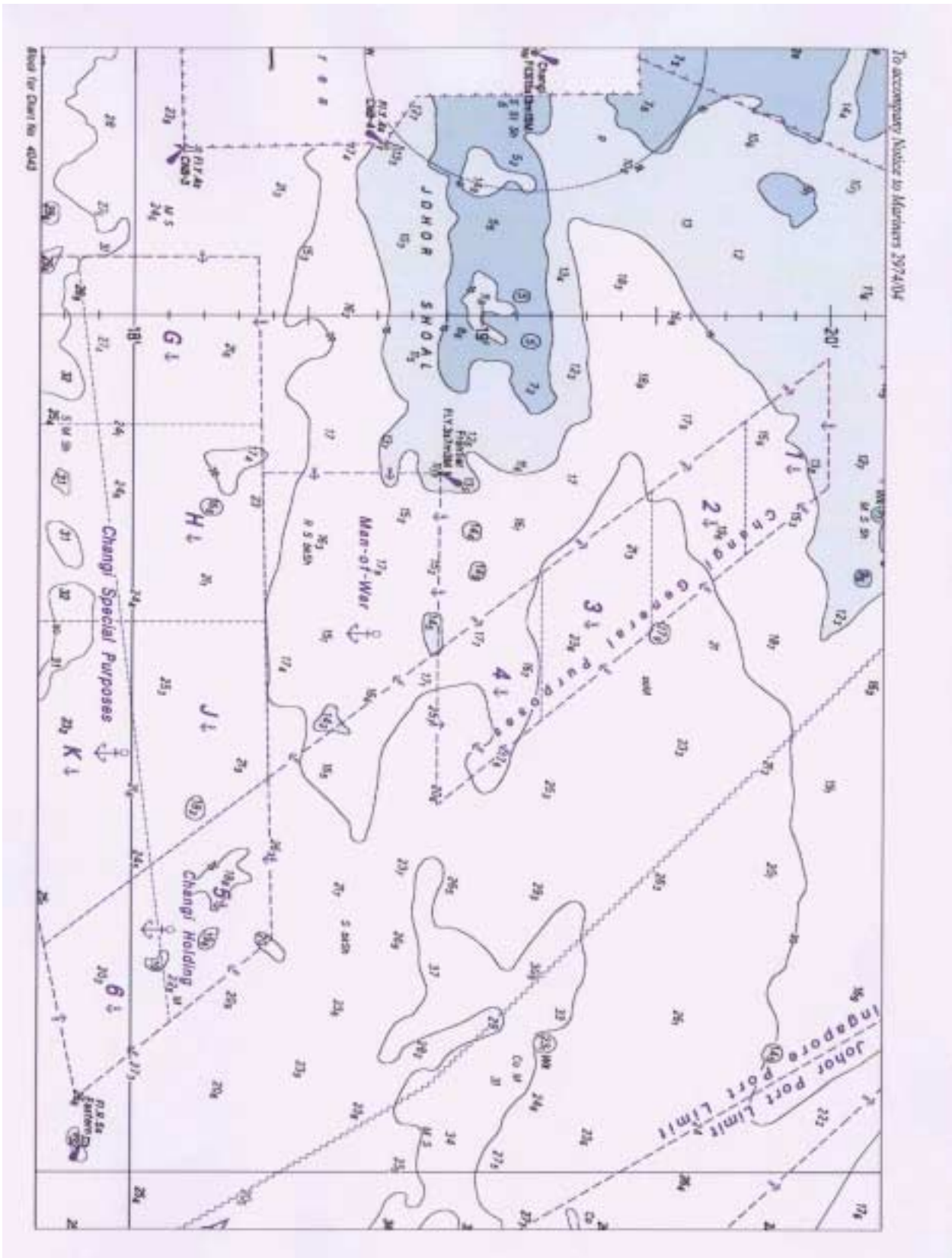
Source: Maritime and Port Authority of Singapore DBNM25/04

Chart 4043 [previous update 2544/04] WGS84 DATUM

Insert	the accompanying block, showing amendments to depths, centred on:	1° 18' .94N. , 104° 04' .11E.
--------	---	-------------------------------

SECTION V REPRINT OF ADMIRALTY NOTICES TO MARINERS FOR DUAL BADGED CHART

NOTE: This block correction is for illustration only. The actual block correction can be obtained from the Admiralty Notices to Mariners Weekly Edition 27 of 2004 or from web site : http://www.ukho.gov.uk/wnm/2004/week27_2965-3099/chart4043nm2974.pdf



SECTION V
REPRINT OF ADMIRALTY NOTICES TO MARINERS
FOR DUAL BADGED CHART

2975/04* SINGAPORE STRAIT – Indonesia – Telok Jodoh Northwards - Wreck. Buoy.

Source: Maritime and Port Authority of Singapore DBNM 26/04

Chart 4041 [previous update 2545/04] WGS84 DATUM

Insert



(a) 1° 13' .32N. , 103° 57' .70E.



FI(2)5s, close E of:

(a) above

Reprinted from: Weekly Edition 27 dated 1 July 2004

3194/04* SINGAPORE STRAIT – Singapore – Outer Shoal Eastwards – Wreck.

Source: Maritime and Port Authority of Singapore

Chart 4041 [previous update 2975/04] WGS84 DATUM

Substitute



Wk for



Wk

1° 15' .50N. , 103° 54' .75E.

Reprinted from: Weekly Edition 28 dated 8 July 2004

HYDROGRAPHIC NOTE

Date.....

Ref. No

Name of vessel or address of sender:

.....
.....
.....

General locality:

Subject:

Approx.Position: Lat Long

Charts affected:

Latest Notices to Mariners held.....

Publications affected (Edition No. and date of latest supplement)

.....
.....

Details:-

.....
.....
.....
.....
.....

Signature of

Observer/Reporter:..... Ship' s stamp.....

INSTRUCTION

1. Mariners are requested to notify the Chief Hydrographer, Maritime and Port Authority of Singapore, when new or suspected dangers to navigation are discovered, changes observed in aids to navigation or corrections to nautical publications seem to be necessary.
2. The instructions below should be followed as closely as possible to facilitate easy interpretation of information.
3. A position which is fixed by sextant angles, radar ranges or bearings (true or magnetic) should include more than two objects in order to provide a check on its accuracy. When there is a series of fixes along a ship's track only the method of fixing and the objects used need to be indicated. A position may also be defined by bearing and distance from a conspicuous object eg. beacon, lighthouse etc.
4. A report should include a tracing of the largest scale chart and the details should be marked in red; adequate information must be traced in black ink to enable the amendments to be fitted correctly.
5. The method in which soundings are taken should be stated. In case of echo sounding, the trace should be marked with date, times, depths etc. and forwarded with the report. It is important to state whether the echo sounder is set to register depths below the surface or below the keel; in the latter case the vessel's draught at the time of observation should be given. The make, name and type of set should also be stated.
6. Modern echo sounders frequently register greater depths than the advertised maximum for the set, eg. with a set whose maximum is 500 metres, a trace appearing at 50 metres may in fact be 550 metres or even 1050 metres. Erroneous deep soundings caused by 2nd transmission error can usually be recognised by the following:-
 - (a) the tracing being weaker than normal for the depth registered,
 - (b) the trace appearing to pass through the transmission line,
 - (c) the feathery nature of the trace.
7. Reports which cannot be confirmed or are lacking in certain details should not be withheld. Shortcomings should be stressed and any firm expectation of being able to check the information on a succeeding voyage should be mentioned.
8. Reports of shoal soundings, uncharted dangers and defects in aids to navigation may, at the mariner's discretion, be made by radio to Singapore Port Operations on VHF Channels 12 or 20 or to Chief Hydrographer, Maritime and Port Authority of Singapore, through Singapore Radio, call-sign 9VG, by wireless telegraphy.

Note:-

An acknowledgement of receipt will be sent and the information then used to the best advantage. When a Notice to Mariners is issued the sender's vessel or name is quoted as authority unless the same information is also received in a foreign Notices to Mariners. Further communication should be expected only if the information is of outstanding value or has unusual features.