



SINGAPOREAN NOTICES TO MARINERS

	CONTENT	Page
I	Index of Charts & Publications	229
II	New Publications	232
	Notices to Mariners and Chart Corrections	237
	Temporary and Preliminary Notices	240
III	Navigational Information	242
	Amendments to Publications	249
IV	Reprint of Radio Navigational Warnings	251
V	Reprint of Admiralty Notices to Mariners for Dual Badged Charts	252

The monthly Notices to Mariners contain corrective information affecting charts published by the Hydrographic Department, Maritime and Port Authority of Singapore. The information contained in these Notices should be updated on the charts affected. Notices under Section II apply only to the particular Singaporean Chart(s) indicated.

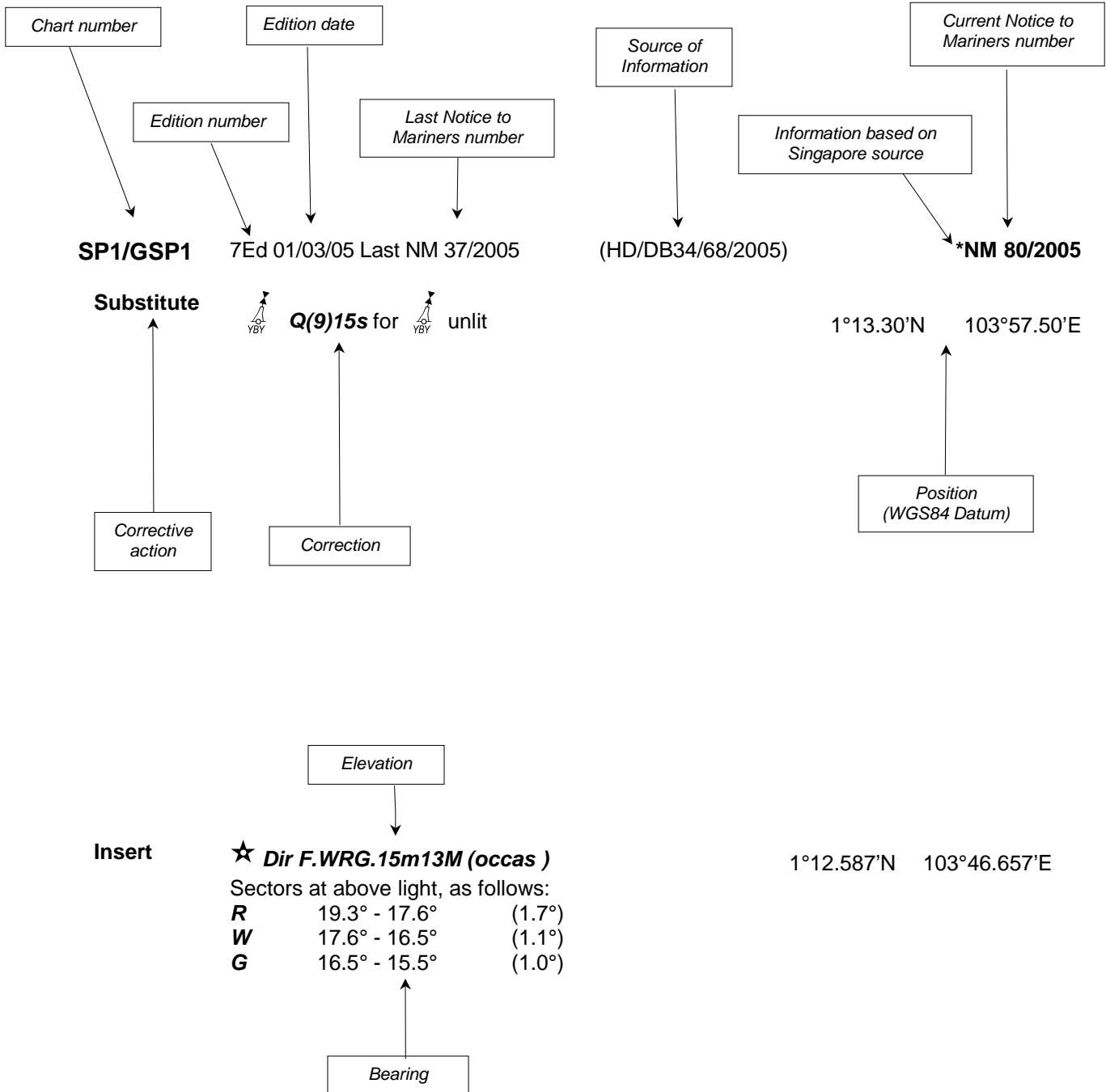
Mariners are requested to notify the Chief Hydrographer, Maritime and Port Authority of Singapore, immediately on the discovery of new dangers or suspected dangers to navigation and of changes or defects in aids to navigation. See Hydrographic Note on back page.

With effect from 1st January 2007, we would no longer provide hardcopies of Singaporean Notices to Mariners (SNM). The monthly SNM can be accessed directly from the MPA website:
<http://www.mpa.gov.sg/infocentre/publications/noticesmari.htm>
 This service is offered free of charge.

Hydrographic Department
 Maritime and Port Authority of Singapore
 P.O. Box 313
 PSA Building Post Office
 Singapore 911141
 Tel : (65) 6375 1550
 Fax : (65) 6278 7646

EXPLANATION OF FORMAT

The elements of a typical chart correction are explained below.



Notes:

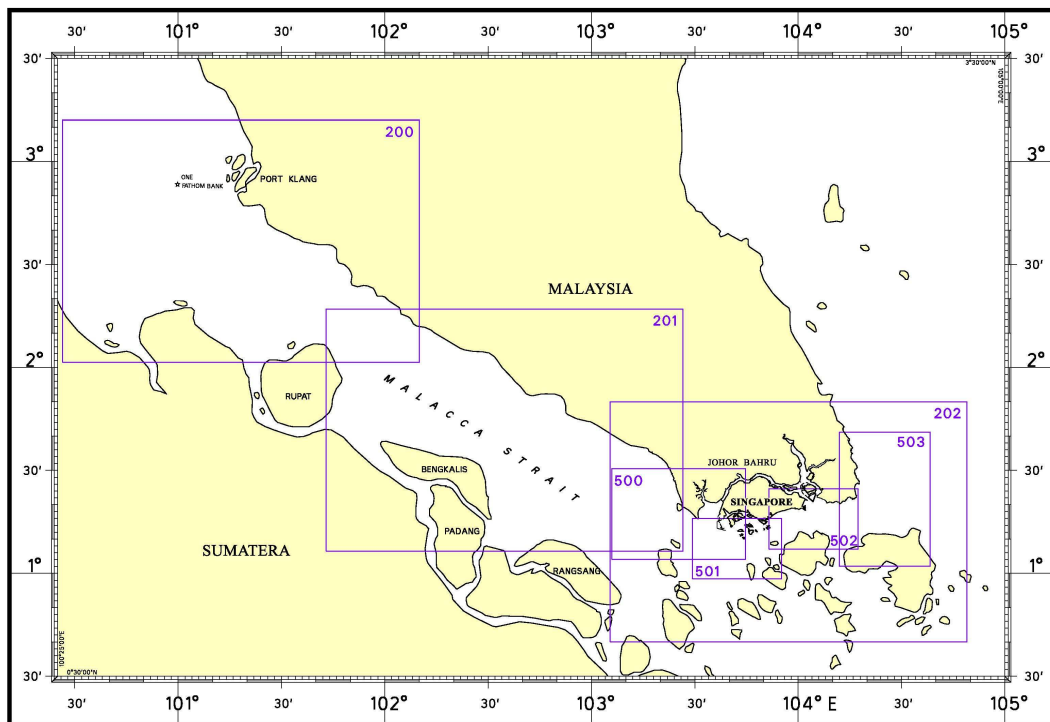
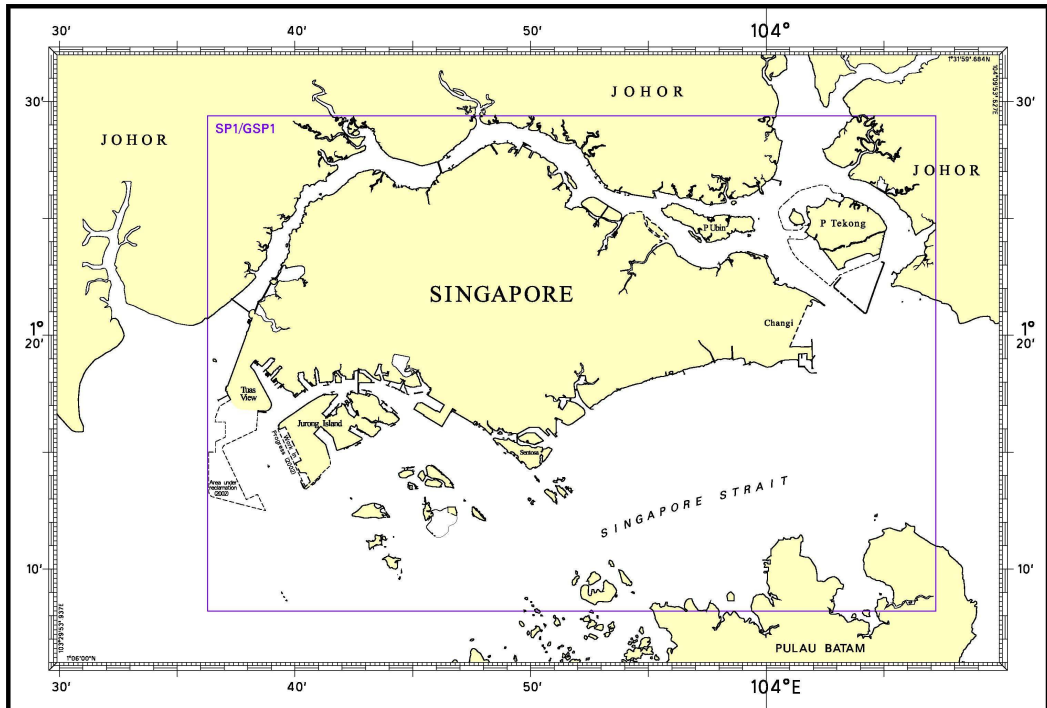
- a) Notice to Mariners number followed by:
 - T** indicates a Temporary Notice (eg. ***NM 80T/2005**).
 - P** indicates a Preliminary Notice (eg. ***NM 80P/2005**).
- b) Bearings are referred to True Compass in degrees clockwise from 000° to 359°. Bearings related to lights are from seaward.
- c) Heights and elevations are above Mean High Water Springs.

I

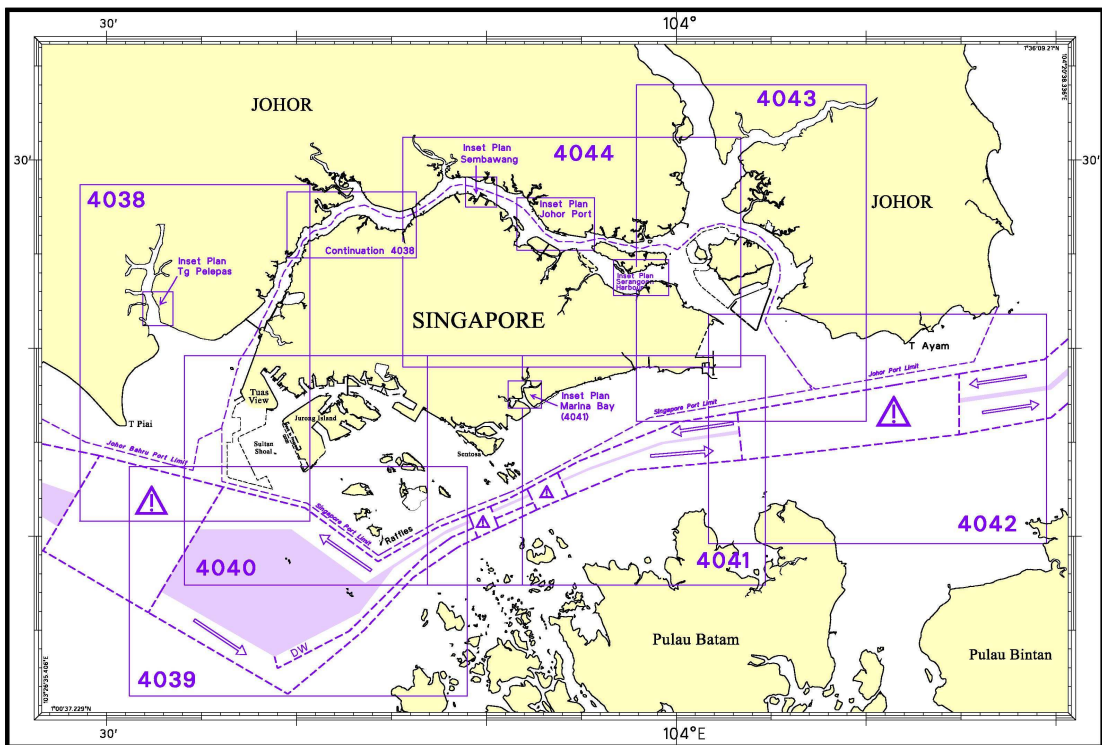
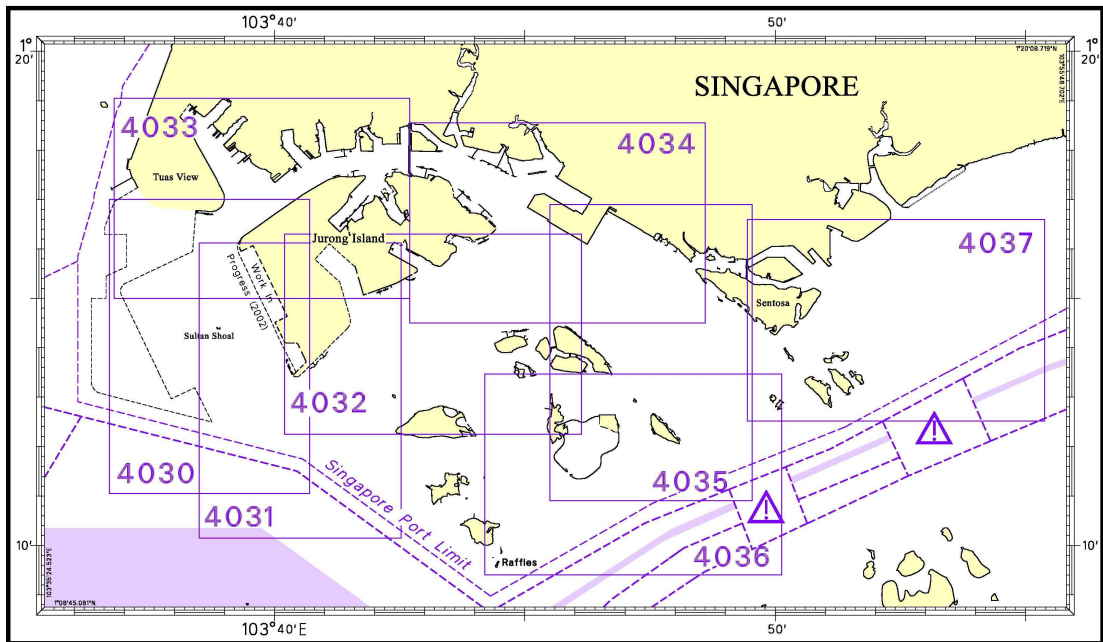
INDEX OF CHARTS AND PUBLICATIONS

NOTICES	DESCRIPTION	PAGE	NOTICES	DESCRIPTION	PAGE
	INDEX OF SINGAPOREAN CHARTS	230	*158P	502	240
	INDEX OF DUAL BADGED CHARTS	231	*159	Construction of Container Berths and Stacking Yards at Pasir Panjang Terminal (Phases C06 to C10)	242
	New Publication "YEAR 2007 SINGAPORE TIDE TABLES"	232	*160	Construction of Marine Jetty and foreshore structures at Jurong Island	243
	New Edition SINGAPOREAN CHARTS	233	*161	a) Reclamation of Jurong Island Phase 4 and b) Marine soil investigation at Banyan Basin	244
	New Edition DUAL BADGED CHARTS	235			
	New Edition SINGAPORE ELECTRONIC NAVIGATIONAL CHARTS	236	*162	Buoy Deployment at Tuas Desalination Plant for seawater quality monitoring	246
*147	SP1/GSP1	237	*163	Reclamation at Pulau Tekong	247
*148	SP1/GSP1	237			
*149	SP1/GSP1	237	*164	Updating of Publication "SINGAPORE PORT INFORMATION"	249
*150	SP1/GSP1	237			
*151	SP1/GSP1	237			
	202	237			
	500	238			
	501	238			
*152	500	238			
	501	239			
*153	502	239			
*154T	SP1/GSP1	240			
*155T	SP1/GSP1	240			
*156T	SP1/GSP1	240			
*157T	SP1/GSP1	240			

I
INDEX OF CHARTS AND PUBLICATIONS
INDEX OF SINGAPOREAN CHARTS

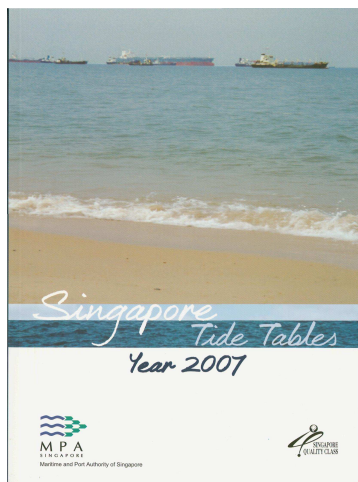


I
INDEX OF CHARTS AND PUBLICATIONS
INDEX OF DUAL BADGED CHARTS



II NEW PUBLICATIONS

NEW PUBLICATION



YEAR 2007 SINGAPORE TIDE TABLES

Summary of Publication

- (a) The daily prediction of tidal height and tidal stream stations within the Port of Singapore, Singapore Strait and Malacca Strait.
- (b) The predictions consist of 4 main segments to facilitate easy reference:
 - High and Low Water Predictions
 - Hourly Tidal Height Predictions
 - Hourly Tidal Stream Predictions
 - Maximum and Slack Tidal Stream Predictions
 - Malacca Strait – High and Low Water Predictions
- (c) As in earlier publications, the presentation of the predictions are enhanced with colour codes so as to differentiate the various states of tidal heights, eg falling or rising tide and tidal stream directions. Moon faces, eg full and new moon, are also included in each calendar month to complement the prediction values.
- (d) The Tidal Heights are given in metres above Chart Datum (CD) and can be referenced to all Singaporean Charts and Dual Badged Charts covering the area. A table showing the various tidal levels eg. MHWS, MLWS, etc, at various stations with reference to CD is also included in this publication.

To Whom Will It Be Useful?

Mariners, shipping community, port users and other interested users.

Frequency/Year of Publication

Annually

Cost of publication

The price of the publication is S\$20.80 (excluding Goods & Services Tax).

Order Enquires

Motion Smith : 76 Shenton Way #01-01
Singapore 079119
Tel : (65) 6220 5098
(After office hours:
Pager No. 9304 4156, 9304 4159)
Fax : (65) 6225 4902
E-mail : sales@motsmith.com
Website : <http://www.motsmith.com>

II NEW PUBLICATIONS

NEW EDITION SINGAPOREAN CHARTS TO BE PUBLISHED ON 3 JANUARY 2007

Chart No.	:	SP1
Title	:	Anchorage and Aids to Navigation
Coverage	:	Lat 1° 08.20' N 1° 29.40' N Long 103° 35.70' E 104° 07.20' E
Scale	:	1:60 000
Date Published	:	3 January 2007
Size of chart	:	973.9 x 651.2 mm
Remarks	:	This new edition includes amendments to anchorages, depth contours, submarine cables and pipelines, limit of working areas, aids to navigation, new jetties and reclamation profile of Jurong Island. Chart of the same number published on 30 March 2006 is superseded.
Price (Excluding GST)	:	S\$39.00
Chart No.	:	GSP1
Title	:	Anchorage and Aids to Navigation (with area reference)
Coverage	:	Lat 1° 08.20' N 1° 29.40' N Long 103° 35.70' E 104° 07.20' E
Scale	:	1:60 000
Date Published	:	3 January 2007
Size of chart	:	973.9x 651.2 mm
Remarks	:	This new edition includes amendments to anchorages, depth contours, submarine cables and pipelines, limit of working areas, aids to navigation, new jetties and reclamation profile of Jurong Island. Chart of the same number published on 30 March 2006 is superseded.
Price (Excluding GST)	:	S\$39.00
Charts are available from	:	Motion Smith 76 Shenton Way #01-01 Singapore 079119 Tel : (65) 6220 5098 (After office hours, Pager No.9304 4156, 9304 4159) Fax : (65) 6225 4902 Email : sales@motsmith.com Internet : http://www.motsmith.com Website : http://www.motsmith.com

II NEW PUBLICATIONS

NEW EDITION SINGAPOREAN CHARTS PUBLISHED

Chart No. : 202
Title : Singapore Strait
Coverage : Lat 0° 40.00' N 1° 50.00' N
Long 103° 05.34' E 104° 48.89' E
Scale : 1:200 000
Date Published : 19 October 2006
Remarks : This new edition includes new surveys, submarine cables and anchorages. This new edition supersedes the earlier edition published on 15 November 2004.

Chart No. : 501
Title : Singapore Strait – Western Part
Coverage : Lat 0° 58.36' N 0° 16.00' N
Long 103° 29.17' E 103° 55.05' E
Scale : 1:50 000
Date Published : 21 September 2006
Remarks : This new edition includes new surveys covering Temasek, Sinki, Southern and East Keppel Fairways and Raffles Shoal. New submarine cables and Nipa Transit Anchorage are also included. This new edition supersedes the earlier edition published on 15 September 2003.

II NEW PUBLICATIONS

NEW EDITION DUAL BADGED CHARTS PUBLISHED

Chart No. : 4040
Title : Tuas View to Pulau Sakijang Bendera (S John's Island)
Coverage : Lat 1° 07.40' N 1° 19.60' N
 Long 103° 34.10' E 103° 51.90' E
Scale : 1:30 000
Date Published : 21 September 2006
Remarks : This new edition includes new surveys covering Temasek, Sinki and East Keppel Fairways, West Jurong Channel and Raffles Shoal. This new edition supersedes the earlier edition published on 1 December 2005.

Chart No. : 4030
Title : Port of Singapore – West Jurong Anchorages and Temasek Fairway
Coverage : Lat 1° 11.05' N 1° 17.00' N
 Long 103° 36.70' E 103° 40.70' E
Scale : 1:10 000
Date Published : 10 August 2006
Remarks : This new edition includes new surveys covering Temasek Fairway and West Jurong Channel. This new edition supersedes the earlier edition published on 22 January 2004.

Chart No. : 4031
Title : Port of Singapore – Western Approaches to Jurong Island
Coverage : Lat 1° 10.15' N 1° 16.12' N
 Long 103° 38.50' E 103° 42.53' E
Scale : 1:10 000
Date Published : 10 August 2006
Remarks : This new edition includes new surveys covering Raffles Shoal, Selat Pauh, Southern Island Firing Area, Temasek Fairway, VLCC Jetties and Banyan Basin. This new edition supersedes the earlier edition published on 22 January 2004.

Chart No. : 4032
Title : Port of Singapore – Sinki Fairway
Coverage : Lat 1° 12.25' N 1° 16.30' N
 Long 103° 40.20' E 103° 46.13' E
Scale : 1:10 000
Date Published : 10 August 2006
Remarks : This new edition includes new surveys covering Selat Pauh, Southern Island Firing Area, VLCC Jetties, Banyan Basin and Selat Sinki. This new edition supersedes the earlier edition published on 22 January 2004.

II NEW PUBLICATIONS

Chart No. : 4038
: Malaysia and Singapore, Johor Strait, Western Part.
Title : Plan A, Town Reach (Scale 1:30 000)
: Plan B, Malaysia, Pelabuhan Tanjung Pelepas (Scale 1:15 000)
Coverage : Lat 1° 10.80' N 1° 28.70' N
: Long 103° 28.60' E 103° 40.70' E
Scale : 1:30 000
Date Published : 17 August 2006
Remarks : This new edition includes new surveys covering Temasek Fairway, Sinki Fairway and Raffles Shoal. This new edition supersedes the earlier edition published on 17 November 2005.

Charts are available from : Motion Smith
76 Shenton Way #01-01
Singapore 079119
Tel : (65) 6220 5098
(After office hours, Pager No.9304 4156, 9304 4159).
Fax : (65) 6225 4902
Email : sales@motsmith.com
Internet Website : <http://www.motsmith.com>




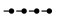



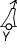
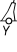
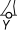
NEW EDITION OF THE SINGAPORE ELECTRONIC NAVIGATIONAL CHARTS (ENC) COVERING DUAL BADGED CHARTS 4030, 4031, 4032 WERE RELEASED ON 10 AUG 2006 AND 4038 ON 17 AUG 2006.

For more information:

Please contact Ms Jenny Goh/Siti at Tel: 6375 1575/6 or visit our website:

<http://www.mpa.gov.sg/portdevelopment/services/enc.htm>

II
NOTICES TO MARINERS AND CHART CORRECTIONS

SP1/GSP1	8Ed 30/03/06 Last NM 140/2006	(HD/HE025/132/2006)	*NM 147/2006
Delete	 PPT-2, FI(2)G.10s		1°17.11'N 103°45.39'E
Insert		(HD/HE025/133/2006)	*NM 148/2006
			1°13.71'N 103°43.99'E
Insert		(HD/HE025/137/2006)	*NM 149/2006
			1°16.08'N 103°51.58'E
Insert		(HD/HY Code A00900306)	*NM 150/2006
	Gas Pipelines and Water Pipelines,  , joining:		1°14.47'N 103°50.42'E 1°13.93'N 103°50.80'E
Insert	Legend, " Water and Gas "		1°14.03'N 103°50.62'E
Insert	Submarine Fibre Optic Cables,  , joining:		1°14.47'N 103°50.42'E 1°13.93'N 103°50.80'E
Insert	 FI(2)Y.6s5M	(DGSC Indo No. 354/2006)	NM 151/2006
			1°09.10'N 103°38.60'E
<hr/>			
202	5Ed 19/10/06	(DGSC Indo No. 354/2006)	NM 151/2006
Insert	 FI(2)Y.6s5M		1°09.10'N 103°38.60'E
	 FI.Y.5s5M		1°05.50'N 103°40.80'E
	 FI.Y.3s5M		1°04.50'N 103°38.90'E
	 FI.Y.4s5M		1°07.30'N 103°34.20'E

II
NOTICES TO MARINERS AND CHART CORRECTIONS

 **FI(4)Y.10s5M** 1°09.50'N 103°35.60'E

500 4Ed 15/08/05 Last NM 141/2006 (DGSC Indo No. 354/2006) **NM 151/2006**

Insert

 **FI(2)Y.6s5M** 1°09.10'N 103°38.60'E

 **FI.Y.5s5M** 1°05.50'N 103°40.80'E

 **FI.Y.3s5M** 1°04.50'N 103°38.90'E

 **FI.Y.4s5M** 1°07.30'N 103°34.20'E

 **FI(4)Y.10s5M** 1°09.50'N 103°35.60'E

(HD/HY Code F00100506)

***NM 152/2006**

Insert

Depth **14₃** 1°11.31'N 103°40.51'E

501 4Ed 21/09/06 Last NM 141/2006 (DGSC Indo No. 354/2006) **NM 151/2006**

Insert

 **FI(2)Y.6s5M** 1°09.10'N 103°38.60'E

 **FI.Y.5s5M** 1°05.50'N 103°40.80'E

 **FI.Y.3s5M** 1°04.50'N 103°38.90'E

 **FI.Y.4s5M** 1°07.30'N 103°34.20'E

 **FI(4)Y.10s5M** 1°09.50'N 103°35.60'E

II
NOTICES TO MARINERS AND CHART CORRECTIONS

(HD/HY Code F00100506)

NM 152/2006*Insert**Depth *14₃*

1°11.31'N

103°40.51'E

502

3Ed 25/10/05 Last NM 128/2006

(HD/HY Code AJ0300406)

*** NM 153/2006****Insert**

Barrage, pecked line joining:




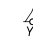

1°16.82'N

103°52.27'E

1°16.94'N

103°52.43'E

II
TEMPORARY AND PRELIMINARY NOTICES

SP1/GSP1	8Ed 30/03/06 Last NM 140/2006	(HD/HE025/129/2006)	*NM 154T/2006
Insert	 FI(2)G.10s, TCPT1		1°17.25'N 103°45.29'E
		(HD/HE025/130/2006)	*NM 155T/2006
Insert	 FI.Y.4s, TCPT2		1°17.27'N 103°45.41'E
		(HD/HE025/131/2006)	*NM 156T/2006
Insert	 FI.Y.6s, TCPT3		1°16.97'N 103°45.90'E
		(Port Marine Notice No. 149/2006)	*NM157T/2006
Insert	 FI.Y.1.4s, TMSI 1		1°18.08'N 103°36.94'E
Insert	 FI.Y.1.4s, TMSI 2		1°20.43'N 103°37.78'E

(Note: The below Revised Anchorages in the Port of Singapore will be implemented from 0800 hours (Local Time) on 2nd January 2007.)

502	3Ed 25/10/05 Last NM 128/2006	((HD/HY Code AB0301306)	*NM 158P/2006
Delete	Maritime Limit, pecked line joining:		1°16.78'N 103°59.73'E 1°17.55'N 103°59.73'E
	Maritime Limit, pecked line joining:		1°16.93'N 104°00.50'E 1°17.61'N 104°00.50'E
Delete	Legend,		
	J		1°17.47'N 104°00.85'E
	K		1°17.45'N 104°00.12'E
	L		1°17.37'N 103°59.87'E
	M		1°16.92'N 103°59.42'E
	N		1°17.01'N 104°00.14'E
	P		1°17.18'N 104°00.94'E
Insert	Maritime Limit, pecked line joining:		1°16.74'N 103°59.56'E 1°17.54'N 103°59.56'E

II
TEMPORARY AND PRELIMINARY NOTICES

Insert	Maritime Limit, pecked line joining:	1°16.85'N	104°00.14'E
		1°17.58'N	104°00.14'E
Insert	Maritime Limit, pecked line joining:	1°17.00'N	104°00.88'E
		1°17.63'N	104°00.88'E
Insert	Legend:		
	J	1°17.45'N	104°01.04'E
	K	1°17.44'N	104°00.57'E
	L	1°17.37'N	103°59.87'E
	M	1°17.33'N	103°59.29'E
	N	1°16.88'N	103°59.26'E
	O	1°16.98'N	103°59.88'E
	P	1°17.09'N	104°00.54'E
Q		1°17.22'N	104°01.06'E
Delete	Maritime Limit, pecked line joining:	1°16.11'N	103°56.01'E
		1°16.63'N	103°56.01'E
	Maritime Limit, pecked line joining:	1°16.11'N	103°57.68'E
		1°16.63'N	103°58.64'E
Insert	Maritime Limit, pecked line joining:	1°16.11'N	103°57.68'E
		1°16.63'N	103°58.71'E
Substitute	Legend:		
	R for Q	1°16.31'N	103°57.76'E
	S for R	1°16.30'N	103°56.97'E

III NAVIGATIONAL INFORMATION

The Singapore Port Marine Notices can be accessed from the MPA website,
http://www.mpa.gov.sg/circulars_and_notices/portmarine_notices/pm_notices.htm

*** (NM 159/2006) CONSTRUCTION OF CONTAINER BERTHS AND STACKING YARDS AT PASIR PANJANG TERMINAL (PHASES C06 to C10)**

Applicable to : Mariners operating in the vicinity of Pasir Panjang Terminal.

This is a revision of Port Marine Notice No. 99 of 2006, which is cancelled with effect from 10 October 2006. The work period is renewed and the working area is revised.

Date : With effect from 11 October 2006 to 11 April 2007.

Location : Pasir Panjang Terminal, within the working area bounded by the following co-ordinates (please see plan attached):

Working Area

WGS 84 Datum

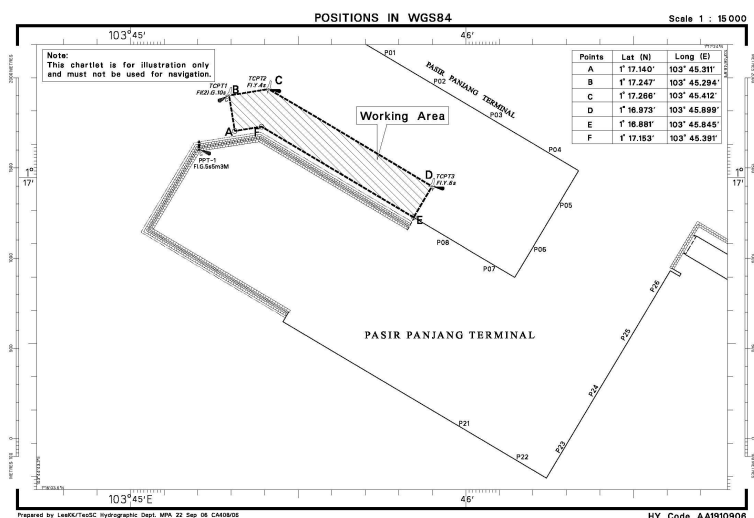
<u>Point</u>	<u>Latitude (N)</u>	<u>Longitude (E)</u>	<u>Marker / Buoy Light Characteristics</u>
A	01°17.140'N	103°45.311'E	
B	01°17.247'N	103°45.294'E	TCPT1 / Green Pillar / Fl(2)G.10s
C	01°17.266'N	103°45.412'E	TCPT2 / Yellow Pillar / Fl.Y. 4s
D	01°16.973'N	103°45.899'E	TCPT3 / Yellow Pillar / Fl.Y. 6s
E	01°16.881'N	103°45.845'E	
F	01°17.153'N	103°45.391'E	

Working Hours : 24 hours daily including Sundays and Public Holidays.

Caution : **When in the vicinity of the working areas, mariners are reminded to:**

- (a) keep well clear and not to enter the working area unless clearance is given by the controller of the terminal;
- (b) maintain a proper look-out;
- (c) proceed at a safe speed and navigate with caution;
- (d) maintain a listening watch on VHF Channel 25; and
- (e) communicate with Cyrene Control on VHF Channel 25 for assistance if required.

Source : Port Marine Notice No. 139 of 2006 dated 11 October 2006.



III NAVIGATIONAL INFORMATION

* (NM 160/2006) CONSTRUCTION OF MARINE JETTY AND FORESHORE STRUCTURES AT JURONG ISLAND

Applicable to : Mariners operating at western part of Singapore waters.

Date : With effect from 20 October 2006 to 19 April 2007.

Location : Entrance to Banyan Basin, Jurong Island, within a working area bounded by the following coordinates.

Working Area

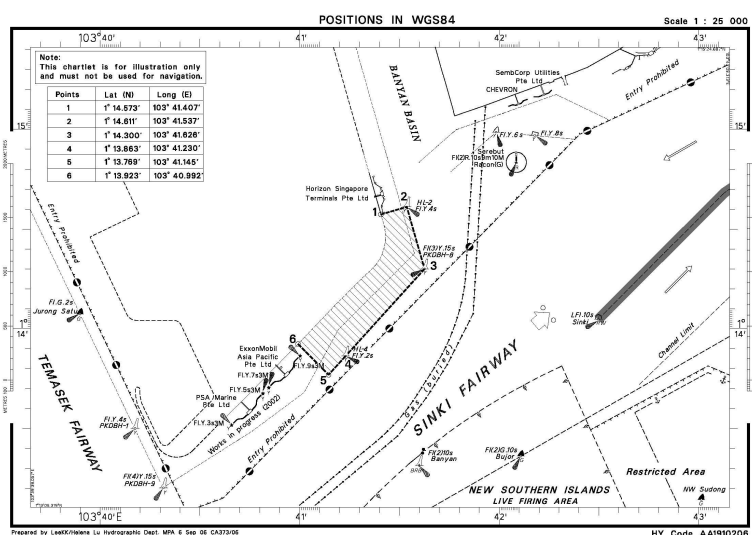
Point	WGS 84 Datum		Marker / Buoy Light Characteristics
	Latitude (N)	Longitude (E)	
1	01° 14.573'	103° 41.407'	
2	01° 14.611'	103° 41.537'	HL-2 / Yellow Pillar / FI (Y). 4s
3	01° 14.300'	103° 41.626'	PKDBH-8 / Yellow Pillar / FI(3)Y.15s
4	01° 13.863'	103° 41.230'	HL-4 / Yellow Pillar / FI (Y). 2s
5	01° 13.769'	103° 41.145'	
6	01° 13.923'	103° 41.992'	

Working Hours : 24 hours daily including Sundays and Public Holidays.

Caution : **When in the vicinity of the working area, mariners are reminded to:**

- (a) keep well clear and not to enter the working areas;
- (b) maintain a proper lookout;
- (c) proceed at a safe speed;
- (d) maintain a listening watch on VHF Channel 68; and
- (e) communicate with Sinki Control on VHF Channel 68 for assistance, if required.

Source : Port Marine Notice No. 142 of 2006 dated 18 October 2006.



III NAVIGATIONAL INFORMATION

*** (NM 161/2006 a) RECLAMATION OF JURONG ISLAND PHASE 4; AND
b) MARINE SOIL INVESTIGATION AT BANYAN BASIN**

Applicable to : Mariners operating at the western part of Singapore waters

This is a revision of Port Marine Notice No. 131 of 2006. The job scope and the work period are revised. Port Marine Notice No. 131 of 2006 is cancelled with effect from 16 October 2006.

Date : With effect from 17 October 2006 to 17 April 2007.

Location : Western part of Singapore, within a working area bounded by the following co-ordinates (please see plan attached):

Working Area "A"

Point	WGS 84 Datum		Name / Buoy Light Characteristics
	Latitude (N)	Longitude (E)	
1	1° 15.559'	103° 41.052'	--
2	1° 15.621'	103° 41.108'	--
3	1° 15.496'	103° 41.243'	--
4	1° 15.250'	103° 41.313'	--
5	1° 15.224'	103° 41.222'	--
5a	1° 15.467'	103° 41.153'	--

Working Area "B"

Point	WGS 84 Datum		Name / Buoy Light Characteristics
	Latitude (N)	Longitude (E)	
6	1° 15.868'	103° 41.241'	--
7	1° 15.962'	103° 41.326'	--
8	1° 15.960'	103° 41.591'	--
9	1° 15.602'	103° 41.615'	--
10	1° 15.618'	103° 41.517'	--

Working Area "C"

Point	WGS 84 Datum		Name / Buoy Light Characteristics
	Latitude (N)	Longitude (E)	
11	1° 13.923'	103° 40.992'	
12	1° 13.819'	103° 41.098'	
13	1° 13.688'	103° 41.027'	
14	1° 13.487'	103° 40.763'	
15	1° 13.203'	103° 40.317'	PKDBH-9/Yellow Pillar/FI(4)Y.15s
16	1° 13.500'	103° 40.175'	PKDBH-1/Yellow Pillar/FI.Y. 4s
17	1° 13.971'	103° 39.948'	
18	1° 14.568'	103° 39.663'	
19	1° 15.057'	103° 39.430'	
20	1° 15.546'	103° 39.197'	
21	1° 15.928'	103° 39.015'	Jurong Empat/YBY Pillar/Q(9)15s
22	1° 16.333'	103° 39.300'	
23	1° 16.240'	103° 39.364'	

And from Point 23 back to Point 11, along the coastline.

Marine Bore Hole Locations

Marine BH	WGS 84 Datum		Schedule	
	Latitude (N)	Longitude (E)	Start	End
VBH4 -10	01° 15.541'	103° 41.129'	11 Sept 2006	18 Oct 2006
MBH4 -11	01° 15.513'	103° 41.148'	11 Sept 2006	17 Sept 2006
MBH4 -12	01° 15.428'	103° 41.189'	18 Sept 2006	24 Sept 2006

III NAVIGATIONAL INFORMATION

<u>Marine BH</u>	<u>Latitude (N)</u>	<u>Longitude (E)</u>	<u>Start</u>	<u>End</u>
MBH4 -13	01° 16.345'	103° 41.224'	24 Sept 2006	01 Oct 2006
VBH4 -14	01° 16.270'	103° 41.233'	19 Oct 2006	26 Nov 2006

The following buoys will be temporarily installed in the vicinity of Working Area A:
WGS 84 Datum

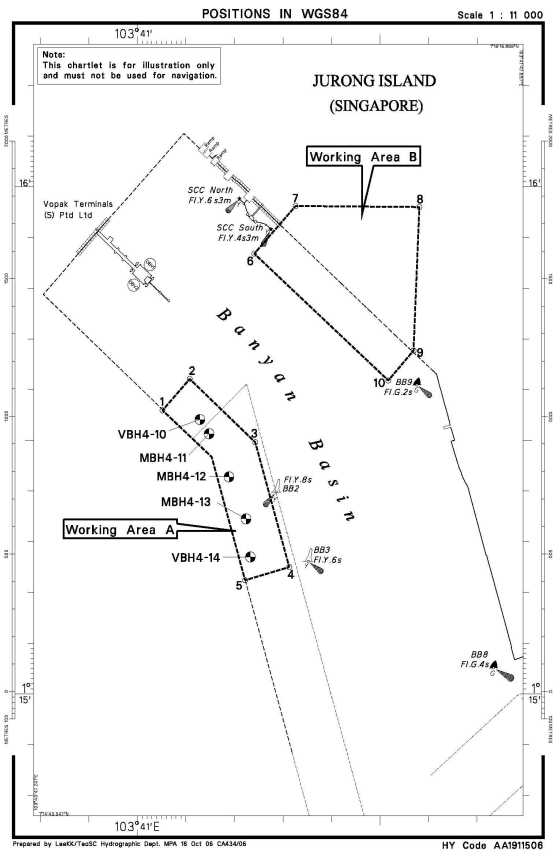
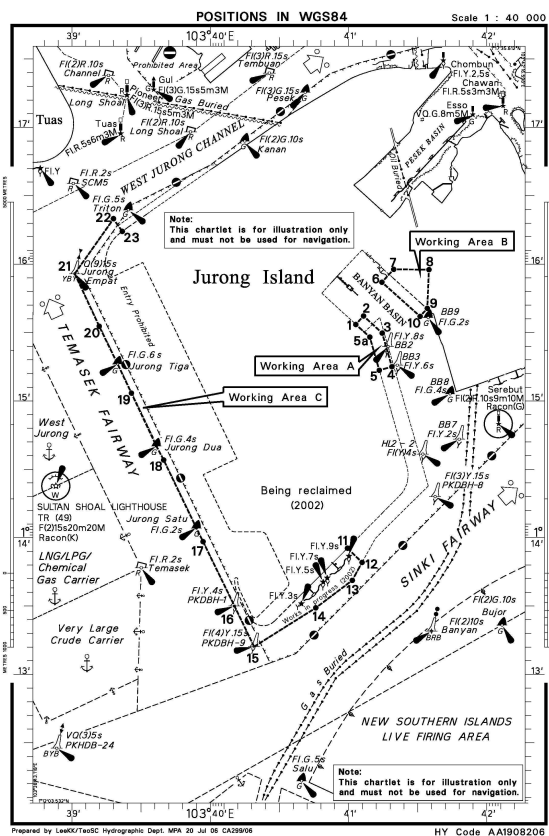
<u>Point</u>	<u>Latitude (N)</u>	<u>Longitude (E)</u>	<u>Name / Buoy Light Characteristics</u>
1	01° 15.398'	103° 41.286'	BB2 / Yellow Pillar / Fl.Y.8s
2	01° 15.261'	103° 41.352'	BB3 / Yellow Pillar / Fl.Y.6s

Working Hours : 24 hours daily including Sundays and Public Holidays.

Caution : **When in the vicinity of the working areas, mariners are reminded to:**

- (a) keep well clear and not to enter the working areas;
- (b) maintain a proper look-out;
- (c) proceed at a safe speed & navigate with caution;
- (d) maintain a listening watch on the applicable VHF Channel and communicate with the relevant Control Sectors for assistance, if required.

Source : Port Marine Notice No. 144 of 2006 dated 16 October 2006.



III NAVIGATIONAL INFORMATION

*** (NM 162/2006) BUOY DEPLOYMENT AT TUAS DESALINATION PLANT FOR SEAWATER QUALITY MONITORING.**

Applicable to : Mariners operating in West Johor Strait.

Date : With effect from 06 November 2006 to 07 May 2007.

Location : 2 new buoys will be installed in the vicinity of Tuas Desalination Plant for seawater quality monitoring at the following locations (please see plan attached):

Buoy Location:

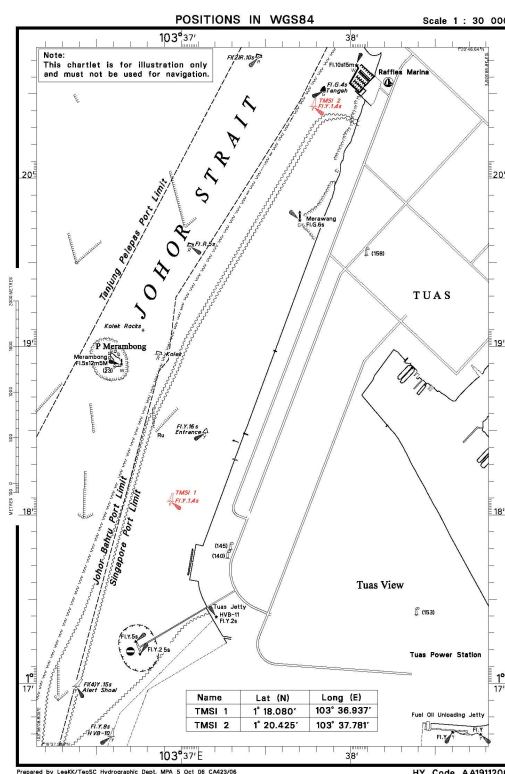
<u>WGS 84 Datum</u>		
<u>Buoy</u>	<u>Latitude (N)</u>	<u>Longitude (E)</u>
TMSI 1	01° 18.080'	103° 36.937'
TMSI 2	01° 20.425'	103° 37.781'

Working Hours : 0700 hours to 1900 hours on 07 November 2006 and 08 November 2006.

Caution : **When in the vicinity of the working area, mariners are reminded to:**

- (a) keep well clear and not to enter the buoy installation area;
- (b) maintain a proper lookout;
- (c) proceed at a safe speed;
- (d) navigate with caution when in the vicinity;
- (e) maintain a listening watch on VHF Channel 22 Jurong Control; and
- (f) communicate with Jurong Control on VHF Channel 22 for assistance, if required.

Source : Port Marine Notice No. 149 of 2006 dated 30 October 2006.



III NAVIGATIONAL INFORMATION

*** (NM 163/2006) RECLAMATION AT PULAU TEKONG.**

Applicable to : Mariners operating in East Johor Strait

This is a revision of Port Marine Notice No. 130 of 2006. The job scope and the work period are revised. Port Marine Notice No. 130 of 2006 is cancelled with effect from 02 November 2006.

Date : With effect from 03 November 2006 to 05 May 2007.

Location : At Pulau Tekong, within a working area bounded by the following co-ordinates (please see plan attached):

WGS 84 Datum

<u>Point / Name</u>	<u>Latitude (N)</u>	<u>Longitude (E)</u>	<u>Colour</u>	<u>Shape</u>	<u>Light Characteristics</u>
L1	01°25.890'	104°03.471'	-	-	-
L2/ * TJUT-20	01°26.260'	104°03.478'	Yellow	Pillar Buoy	Fl.Y.2s
TJUT-19	01°26.544'	104°02.353'	Black/ Yellow	Pillar Buoy	Q.FI.
TJUT-18	01°26.271'	104°01.343'	Yellow	Pillar Buoy	Fl.Y.4s
North Tekong	01°26.021'	104°01.033'	Black/ Yellow	Pillar Buoy	Q.FI.
6	01°25.488'	104°00.444'	-	-	-
Tekong	01°25.406'	104°00.442'	Green	Conical Buoy	Fl(3)G.15s
West Tekong	01°25.167'	104°00.434'	Yellow/ Black/ Yellow	Pillar Buoy	Q(9)15s
TJUT-6	01°24.583'	104°00.634'	Green	Conical Buoy	Fl(2)G.10s
TJUT-5	01°24.218'	104°00.759'	Green	Conical Buoy	Fl.G.4s
TJUT-3	01°23.350'	104°01.057'	Green	Conical Buoy	Fl.G.2s
Malang Tiga	01°23.044'	104°01.417'	Green	Conical Buoy	Fl.G.2.5s
TJUT-1	01°22.591'	104°01.949'	Green	Conical Buoy	Fl.G.4s
Nelayan	01°21.853'	104°02.817'	Green	Conical Buoy	Fl.G.4s
TJUT-9	01°21.074'	104°03.734'	Green	Conical Buoy	Fl.G.4s
South Nelayan	01°20.620'	104°04.310'	Yellow/ Black	Pillar Buoy	Q(6)+LFl.15s
TJUT-10	01°21.187'	104°04.485'	Red	Can Buoy	Fl.R.2s
Red Calder	01°21.750'	104°04.690'	Red	Can Buoy	Fl.R.4s
TJUT-11	01°22.267'	104°04.876'	Red	Can Buoy	Fl.R.6s
Calder	01°23.044'	104°05.159'	Red	Can Buoy	Fl.R.8s

III NAVIGATIONAL INFORMATION

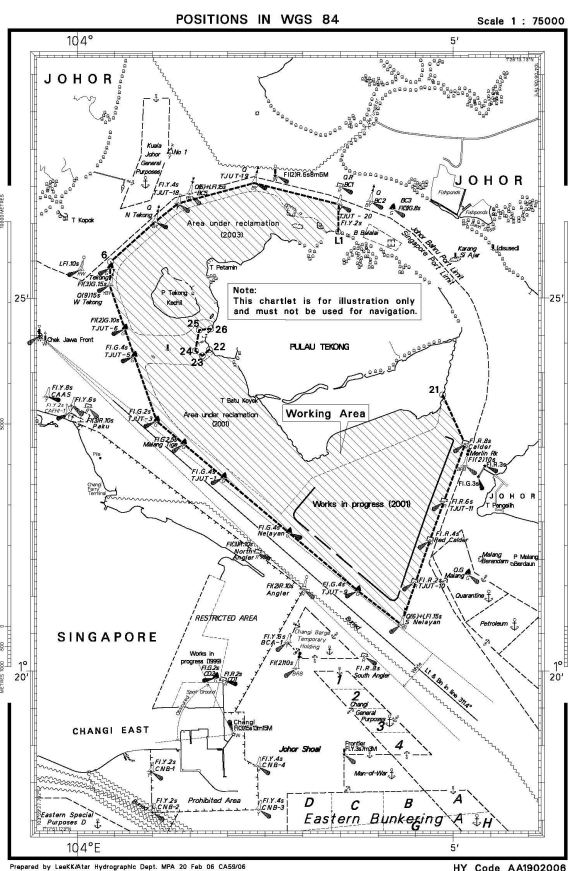
21	01°23.703'	104°04.861'	-	-	-
22	01°24.310'	104°01.759'	-	-	-
23	01°24.227'	104°01.665'	-	-	-
24	01°24.294'	104°01.571'	-	- <td -	
25	01°24.574'	104°01.623'	-	-	-
26	01°24.590'	104°01.777'	-	-	-

* Note: Buoy "TJUT-20" will be installed with a silt and current meter.

Working Hours : 24 hours daily including Sundays and Public Holidays.

Caution : **When in the vicinity of the working area, mariners are reminded to:**
 (a) keep well clear and not to enter the working area;
 (b) maintain a proper look-out;
 (c) proceed at a safe speed & navigate with caution;
 (d) maintain a listening watch on VHF Channel 16/ 21; and
 (e) communicate with Sembawang Control on VHF Channel 21 for assistance, if required.

Source : Port Marine Notice No. 151 of 2006 dated 3 November 2006.



III AMENDMENTS TO PUBLICATIONS

*(NM 163/2006) UPDATING OF PUBLICATION "SINGAPORE PORT INFORMATION 2006/2007 EDITION"

1 Page 120

PASIR PANJANG TERMINAL

Delete the following:

Name of Beacon / Buoy	Position Lat. N Long. E Deg Min	Structure Colour & Shape	Light Characteristic	Owner
PPT-2 Beacon	01 17.112 103 45.385	Green conical on green tubular tower on bund 3m	Fl(2)G.10s5m3M	MPA

Source: HD/HE025/132/2006

2 Page 152

**JURONG ISLAND – BANYAN BASIN (HORIZON SINGAPORE TERMINALS PTE LTD)
(1°14.7'N, 103°41.4'E)**

Insert the following:

Berth	Length of Berth	Depth Alongside (Year Surveyed)	Controlling Depth In Approaches
OBH 1	367m	16.8m (2006)	16.5m – from Sinki Fairway and 15.0m from Selat Pandan
OBH 2	275m	16.5m (2006)	

Source: HD/HY Codes E00110106 and E00111306

Page 152

**JURONG – CRESCENT YARD (KEPPEL FELS LTD)
(1°17.9'N, 103°41.1'E)**

Insert the following:

Berth	Length of Berth	Depth Alongside (Year Surveyed)	Controlling Depth In Approaches
YFQ4	219m	5.6m (2006)	5.9m
YFQ5	219m	4.3m (2006)	5.9m

Source: HD/HY Codes H00104506

III
AMENDMENTS TO PUBLICATIONS

3 Page 147 - Item 7

PASIR PANJANG TERMINAL (PSA Corporation Ltd) (1°17.2'N, 103°46.1'E)

Insert the following:

Berth	Length of Berth	Depth Alongside (Year Surveyed)	Controlling Depth In Approaches
P08	326m	15.0m (2006)	14.6m

Source: HD/HY Code C00111406

4 Page 154 Item 24

PASIR PANJANG TERMINAL (PSA Corporation Ltd) (1°17.2'N, 103°46.1'E)

Amend the following:

Substitute	JURONG ISLAND (SHELL CHEMICAL SERAYA PTE LTD) for JURONG ISLAND (SERAYA CHEMICAL (S) PTE LTD)
-------------------	---

Source: HD/List of Berths – October 2006

IV
REPRINT OF RADIO NAVIGATIONAL WARNINGS

Nil

V
**REPRINT OF ADMIRALTY NOTICES TO MARINERS
 FOR DUAL BADGED CHARTS**

4836/06 * SINGAPORE — East Jurong Channel — Jurong Island and Pasir Panjang Terminal — Port developments. Depths. Works.

Source: Maritime and Port Authority of Singapore DBNMs 40 & 47/06

Chart 4034 [previous update 3148/06] WGS 84 DATUM

Insert accompanying block, showing port developments and amendments to depths, centred on:
 maritime limit, pecked line, joining:

1° 17' .57N. , 103° 43' .56E.
 1° 16' .807N. , 103° 46' .030E.
 (existing limit of dredged area)
 1° 16' .888N. , 103° 46' .078E.
 1° 17' .206N. , 103° 45' .574E.
 1° 17' .259N. , 103° 45' .257E.
 1° 17' .261N. , 103° 45' .230E.
 1° 16' .848N. , 103° 44' .983E.
 1° 16' .814N. , 103° 45' .043E.
 1° 16' .843N. , 103° 45' .060E.
 (shore)
 1° 17' .18N. , 103° 45' .33E.
 1° 16' .94N. , 103° 45' .82E.

legend, Works in progress (2006), centred on:

Tracing Block-Colour (4034)

4837/06 * SINGAPORE — Tuas View — West Jurong Channel — Buoy. Depth.

Source: Maritime and Port Authority of Singapore DBNM 36 & 37/06

Chart 4030 [previous update New Edition 10 / 08 / 2006] WGS84 DATUM




Insert  Fl.Y.4s TS-01 1° 16' .580N. , 103° 38' .820E.

Chart 4033 [previous update New Edition 15 / 06 / 2006] WGS84 DATUM

Insert  Fl.Y.4s TS-01 1° 16' .580N. , 103° 38' .820E.

Substitute depth 12₂ for depth 10₃ 1° 16' .603N. , 103° 39' .662E.

Chart 4038 [previous update New Edition 17 / 08 / 2006] WGS84 DATUM

Insert  Fl.Y.4s TS-01 1° 16' .58N. , 103° 38' .82E.

4838/06 * SINGAPORE — Jurong Island — Banyan Basin — Serebut South-westwards — Buoy.

Source: Maritime and Port Authority of Singapore DBNM 35/06

Chart 4031 [previous update New Edition 10 / 08 / 2006] WGS84 DATUM


Delete  Fl.Y.2s BB7 1° 14' .720N. , 103° 41' .799E.


Chart 4032 [previous update New Edition 10 / 08 / 2006] WGS84 DATUM

Delete  Fl.Y.2s BB7 1° 14' .720N. , 103° 41' .799E.

V
REPRINT OF ADMIRALTY NOTICES TO MARINERS
FOR DUAL BADGED CHARTS

Chart 4040 [previous update New Edition 21 / 09 / 2006] WGS84 DATUM

Delete

 Fl. Y. 2s BB7

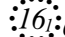
1° 14' .720N. , 103° 41' .799E.

4839/06 * SINGAPORE — Pulau Bukom Eastwards — Third Bukom West-south-westwards — Obstruction. Depth.

Source: Maritime and Port Authority of Singapore DBNM 50/06

Chart 4035 [previous update 3147/06] WGS84 DATUM

Substitute

depth 16₂ for  Obstrn

1° 13' .876N. , 103° 46' .537E.

4840/06 * SINGAPORE — Singapore Island — Keppel Harbour — Rocks.

Source: Maritime and Port Authority of Singapore DBNM 43/06

Chart 4037 [previous update 2607/06] WGS84 DATUM

Delete

 (9₈)

1° 15' .836N. , 103° 49' .620E.

 (10)

1° 15' .865N. , 103° 49' .696E.

4841/06 * SINGAPORE — Singapore Island — South Changi South-eastwards — Rock. Depths.

Source: Maritime and Port Authority of Singapore DBNM 45/06

Chart 4041 [previous update 3351/06] WGS84 DATUM

Substitute

+ (13₅) for + (13₈)

1° 18' .45N. , 103° 59' .33E.

Chart 4043 [previous update 2606/06] WGS84 DATUM

Substitute

+ (13₅) for + (13₈)

1° 18' .45N. , 103° 59' .33E.

4842/06 * SINGAPORE — Pulau Ubin — Eastwards and South-eastwards — Buoy. Wreck.

Source: Maritime and Port Authority of Singapore DBNM 46/06 & 53/06

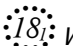
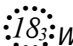
Chart 4043 [previous update 4841/06] WGS84 DATUM

Insert

 Fl. R. 4s NP1

1° 24' .70N. , 103° 59' .99E.


Substitute

 Wk for  Wk

1° 23' .39N. , 104° 00' .40E.

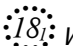
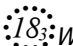
Chart 4044 [previous update 2784/06] WGS84 DATUM

Insert

 Fl. R. 4s NP1

1° 24' .70N. , 103° 59' .99E.

Substitute

 Wk for  Wk

1° 23' .39N. , 104° 00' .40E.

V
REPRINT OF ADMIRALTY NOTICES TO MARINERS
FOR DUAL BADGED CHARTS

4843/06 * SINGAPORE — Pulau Seringat Northwards, Pulau Sakijang Pelepah South-eastwards and Cooper Channel — Buoy. Wrecks. Depth.

Source: Maritime and Port Authority of Singapore DBNM 42/06, 59/06 & 61/06

Chart 4037 [previous update 4840/06] WGS84 DATUM

Insert



1° 13' .948N. , 103° 51' .146E.



Fl(2)10s KM Ja

1° 13' .960N. , 103° 51' .140E.

Delete



1° 13' .366N. , 103° 50' .929E.



1° 13' .339N. , 103° 50' .966E.

Chart 4041 [previous update 4841/06] WGS84 DATUM

Substitute depth 16₄ for depth 20₆ and extend 20m contour SE to enclose

1° 12' .99N. , 103° 51' .60E.

4844/06 * SINGAPORE STRAIT — Main Strait — Karang Banteng Westwards — Depth.

Source: Maritime and Port Authority of Singapore DBNM 60/06

Chart 4039 [previous update 2183/06] WGS84 DATUM

Insert

depth 22₇

1° 09' .64N. , 103° 47' .09E.

Chart 4041 [previous update 4843/06] WGS84 DATUM

Insert

depth 22₇

1° 09' .64N. , 103° 47' .09E.

4846/06 * SINGAPORE — Johor Strait — Western Part — Cautionary note.

Source: Maritime and Port Authority of Singapore

Chart 4038 [previous update 4837/06] WGS84 DATUM

Substitute

accompanying note, SUBMARINE PIPELINES AND CABLES, for
 existing note, SUBMARINE CABLES AND PIPELINES, centred
 on:

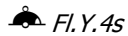
1° 28' .34N. , 103° 38' .66E.

V
REPRINT OF ADMIRALTY NOTICES TO MARINERS
FOR DUAL BADGED CHARTS

4847/06 * SINGAPORE — Singapore Island — Dockyard Reach — Mooring buoys. Ground tackle.
 Source: Maritime and Port Authority of Singapore DBNM 54-57/06

Chart 4044 [previous update 4842/06] WGS84 DATUM

Delete



Fl. Y. 4s

(a) 1° 28' .40N. , 103° 49' .50E.

, close NW of:

(a) above

Chart 4044 [previous update 4842/06] (**plan C, Sembawang**) WGS84 DATUM

Delete



Fl. Y. 4s A and associated ground tackle centred on:

(a) 1° 28' .396N. , 103° 49' .496E.

, close NW of:

(a) above

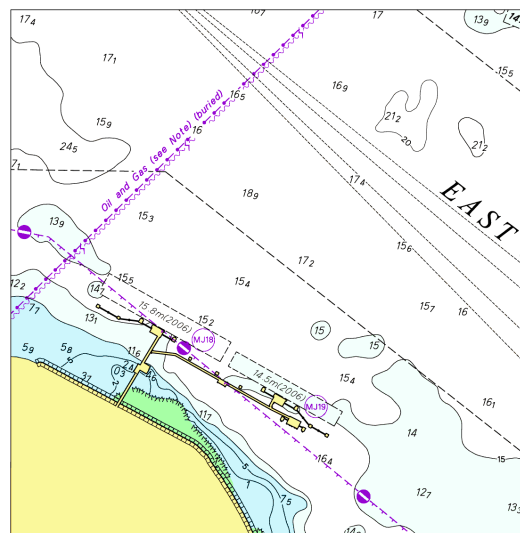


(b) 1° 28' .337N. , 103° 49' .041E.

, close NE of:

(b) above

To accompany Notice to Mariners 4836/06, Image Size 9mm) 111.6 by 110.2



Block for Chart No 4034

Updated to Admiralty Notices to Mariners Edition No. 45 of 2006 dated 9 November 2006

SINGAPORE ELECTRONIC NAVIGATIONAL CHARTS (ENC) DISTRIBUTORS
Please approach any of the appointed distributors to purchase the Singapore ENC.

PERSON TO CONTACT	ADDRESS	TELEPHONE/FAX NO./EMAIL/WEBSITE
Mr Chong Chee Meng General Manager	DPM (Singapore) Pte Ltd 1 Maritime Square, #09-72 Harbour Front Centre, Singapore 099253	Tel. No.: +65 6270 4060 Fax No.: +65 6276 3858 Email: sales@dpmsingapore.com.sg Website: http://www.dpmsingapore.com.sg
Ms Shirley Koh	Kelvin Hughes (S) Pte Ltd 8 Pandan Avenue #02-00, Singapore 609384	Tel. No.: +65 6545 9880 ext.12 Fax No.: +65 6545 8892 Email: shirley.koh@khsing.com Website: http://www.kelvinhughes.co.uk
Mr Philip Loh Sales Manager	Motion Smith 76 Shenton Way #01-01, Singapore 079119	Tel. No.: +65 6220 5098 Fax No.: +65 6225 4902 Email: sales@motsmith.com Website: http://www.motsmith.com
Mr Choy Kum Weng Director	Vector Services Pte Ltd 2 Maritime Square #04-12B SPI Building, Singapore 099255	Tel. No.: +65 6278 7212 Fax No.: +65 6278 7212 Email: kwchoy@pacific.net.sg
Mr Looi Keen Wai Regional Sales Manager	Transas Marine Pacific Pte Ltd 750C Chai Chee Road, Technopark@Chai Chee, #04-07 Singapore 469003	Tel. No.: +65 6443 3061 Fax No.: +65 6443 3025 Email: looi@transas.com.sg Website: www.transas.com.sg
Mr George Arts President	Marine Press of Canada 640 Rue St-Paul Ouest, Suite 300 Montreal (QC) Canada, H3C1L9	Tel. No.: (514) 866-8342 Fax No.: (514) 866-9050 Email: sales@marinepress.com Website: www.marinepress.com
Mr Thomas Wilde Superintendent	HanseNautic GmbH Bade & Hornig, Eckardt & Messtorff Herrengarten 31 D-20459 Hamburg, Germany	Tel. No.: +49 40 374 811-32 Fax No.: +49 40 366 400 Email: info@HanseNautic.com Website: http://www.HanseNautic.com
Ms Verena Borsos Manager	SevenCs AG + Co. KG Ruhrstrasse 90, D-22761 Hamburg, Germany	Tel. No.: +49 40 853 58 6940 Fax No.: +49 40 853 58 6949 Email: sales@chartworld.com Website: http://www.sevencs.com
Mr K. Shimiz ENC Manager	Japan Hydrographic Association ENC Service Division 5-3-3 Tsukiji, Chuo-ku Tokyo 104-0045, Japan	Tel. No.: +81 3 3543 0752 Fax No.: +81 3 3543 0695 Email: enc-support@jha.jp Website: http://www.jha.jp.com
Mr Jester-Kim Foreign Business Department Manager	E_MLX Co. Ltd Ssangyong Research No.2 Lab Sinseong-Dong 100 Yusong-Gu, Daejeon 305-804, Korea (ROK)	Tel. No.: +82 42 865 1893 Fax No.: +82 42 865 1884 Email: Jester-kim@emlx.co.kr
Mr C G Kim	Korean Ocean Development Co. Ltd 2ND Fl, Dongbang Bldg, 25-4, 4 Ga Jungang-Dong, Jung-Gu, Busan, South Korea	Tel. No.: +82 514 66 0760 Fax No.: +82 514 65 9345 Email: sales@chartkorea.com Website: http://chartkorea.com
Mr Kjell Nodland	C-Map Norway A/S P.O Box 212, N-4371 Egersund, Norway	Tel No.: +47 514 64 700 Fax No: +47 514 64 701 Email: market@c-map.no Website: http://www.c-map.no

Ms Marianne Barstad	PRIMAR STAVANGER Lervigsveien 36, P.O Box 60, N-4001 Stavanger, Norway	Tel. No.: +47 51 93 9500 Fax No.: +47 51 93 9501 Email: sales@primar.org Website: http://www.primar-stavanger.org
Mr Roar Moe International Marketing Coordinator	Maritime Information System AS (MARIS) Danholmen 25, No.3115 Tonsberg, Norway	Tel. No.: +47 33 30 42 50 Fax No.: +47 33 30 42 51 Email: roar.moe@maris.no Website: http://www.maris.no
Mr Andy Criddle Regional Sales Manager	United Kingdom Hydrographic Office Admiralty Way, Taunton, Somerset TA1 2DN United Kingdom	Tel. No.: +44 (0)1823 337900 Fax No.: +44 (0)1823 284077 Email: vargroup@ukho.gov.uk & andrew.criddle@ukho.gov.uk Website: www.ukho.gov.uk

CHART AGENT FOR MARITIME AND PORT AUTHORITY OF SINGAPORE (MPA) PUBLICATIONS

Agent's name : Motion Smith
Address : 76 Shenton Way # 01-01
Singapore 079119
Telephone : (65) 6220 5098
: (After Office hours: Pager No. 9304 4156, 9304 4159)
Fax No. : (65) 6225 4902
E-mail : sales@motsmith.com
Website : <http://www.motsmith.com>

HYDROGRAPHIC NOTE - Instructions

1. Mariners are requested to notify the Chief Hydrographer, Maritime and Port Authority of Singapore, when new or suspected dangers to navigation are discovered, changes are observed in aids to navigation or where corrections to nautical publications may be necessary. Reports which cannot be confirmed or are lacking in certain details should not be withheld.
2. Any ambiguities of time, positioning and depth should be stressed and any firm expectation of being able to check the information provided on a following voyage should be mentioned.
3. Mariners using satellite position fixing systems, eg. GPS, should provide details of equipment and datum used (where applicable). Where bearings (true or magnetic) are taken visually or by radar to fix a position, it should include more than two objects in order to provide a check on its accuracy. A position may also be defined by bearing and distance from a conspicuous object eg. beacon, lighthouse etc.
4. The note should include a tracing or a digital image of the chart used and the details should be clearly marked.
5. Echo sounders frequently register greater depths than the advertised maximum depth for the equipment, eg. a trace appearing at 50 metres may be in fact be 550 metres or even 1050 metres for equipment whose maximum depth is 500 metres. Erroneous depths caused by 2nd transmission error can usually be recognised by the following:
 - (a) the tracing being weaker than normal for the depth registered,
 - (b) the trace appearing to pass through the transmission line,
 - (c) the feathery nature of the trace.
6. An acknowledgement of receipt will be sent. When a Notice to Mariners is issued, the sender's vessel or name is quoted as the source unless the same information is also received in foreign Notices to Mariners.
7. Reports of shoals, uncharted dangers and defects in aids to navigation may also be made to the appropriate Singapore Port Operations Control Station on VHF Channels 10, 12, 14, 68 or 73.

HYDROGRAPHIC NOTE

To:

Chief Hydrographer
Hydrographic Department
Maritime and Port Authority of Singapore
460 Alexandra Road #20-00 PSA Building
Singapore 119963

Tel : (65) 6375 1550 or (65) 6375 1551
Fax : (65) 6278 7646
Email : hydrographic@mpa.gov.sg

Sender's Contact Details :

Date :
Name of Vessel :
Address of Sender :
Tel : Fax :
Email :

Nature of Observation :

General Location :
Subject :
Position : Lat. Long.
Charts Used :
Date & Time of Observation :
Details :
.....
.....
Attachment :

Equipment Used :

Type of Position Fixing : GPS / DGPS Others :
Type of Echo Sounder :

Name and Signature :

Ship's / Company's tamp :