



SINGAPOREAN NOTICES TO MARINERS

SECTION	CONTENT	Page
I	Index of Charts & Publications	221
II	New Publications	224
	Notices to Mariners and Chart Corrections	226
	Temporary and Preliminary Notices	230
III	Navigational Information	231
	Amendments to Publications	233
IV	Reprint of Radio Navigational Warnings	234
V	Reprint of Admiralty Notices to Mariners for Dual Badged Charts	235

The monthly Notices to Mariners contain corrective information affecting charts published by the Hydrographic Department, Maritime and Port Authority of Singapore. The information contained in these Notices should be updated on the charts affected. Notices under Section II apply only to the particular Singaporean Chart(s) indicated.

Mariners are requested to notify the Chief Hydrographer, Maritime and Port Authority of Singapore, immediately on the discovery of new dangers or suspected dangers to navigation and of changes or defects in aids to navigation. See Hydrographic Note on back page.

The monthly Singaporean Notices to Mariners can be accessed directly from the MPA website:

<http://www.mpa.gov.sg/> > Circulars & Notices > Singaporean NTM

or

<http://www.mpa.gov.sg/infocentre/publications/noticesmari.htm>

This service is offered free of charge.

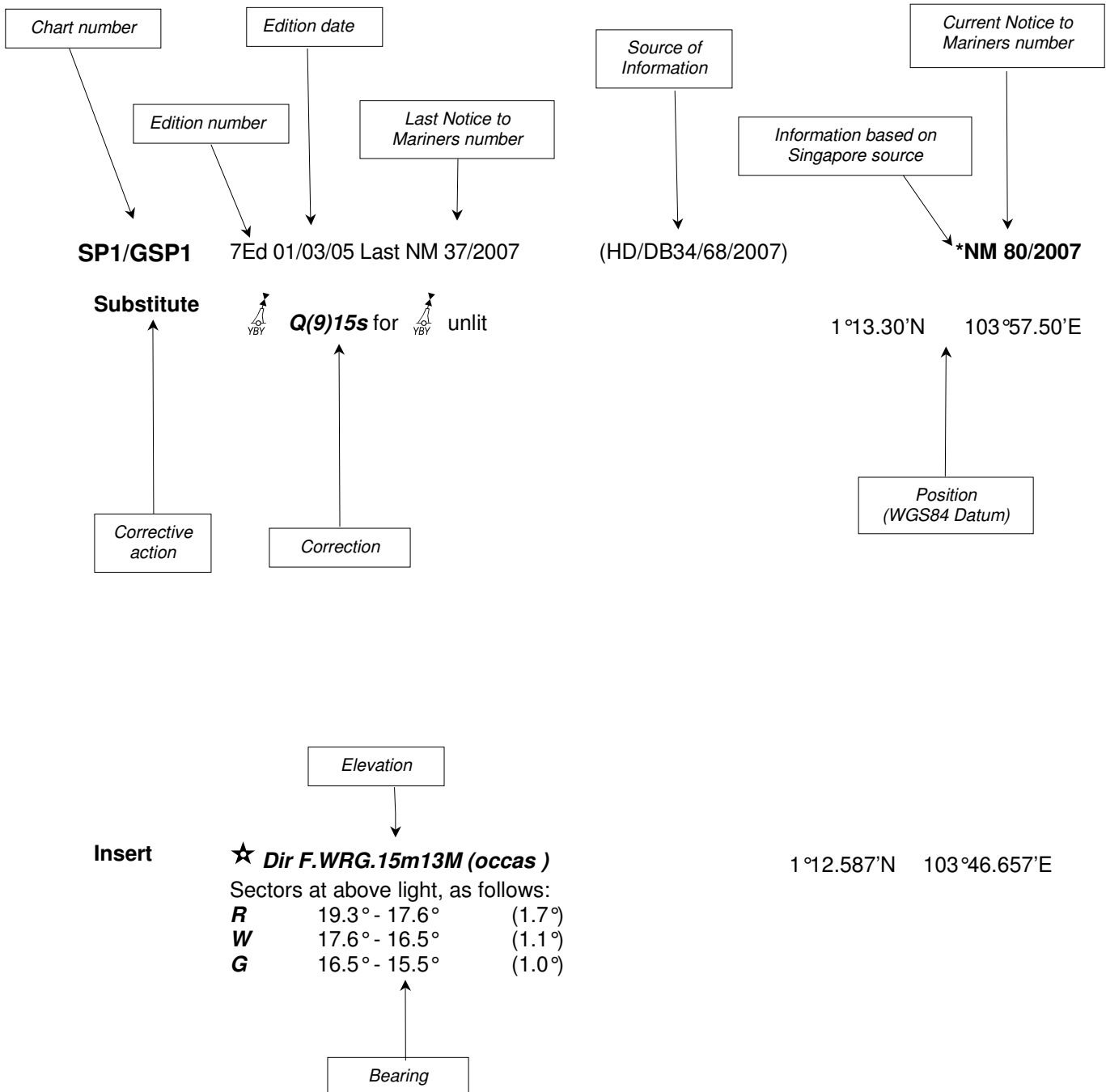
The Chief Hydrographer of
Maritime and Port Authority of Singapore
wishes all users of Singaporean and Dual Badged Charts

**A MERRY CHRISTMAS
AND
A HAPPY NEW YEAR
Wishing all a safe voyage in Year 2008**

Hydrographic Department
Maritime and Port Authority of Singapore
460 Alexandra Road
PSA Building #20-00
Singapore 119963
Tel: (65) 6375 1227
Fax: (65) 6278 7646

EXPLANATION OF FORMAT

The elements of a typical chart correction are explained below.



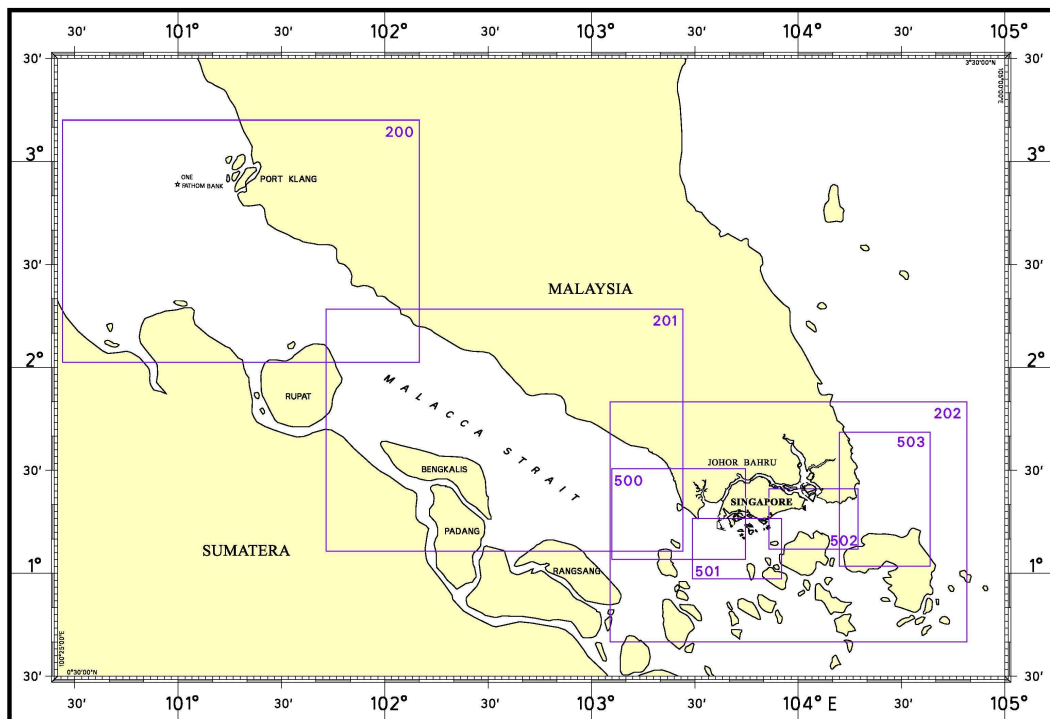
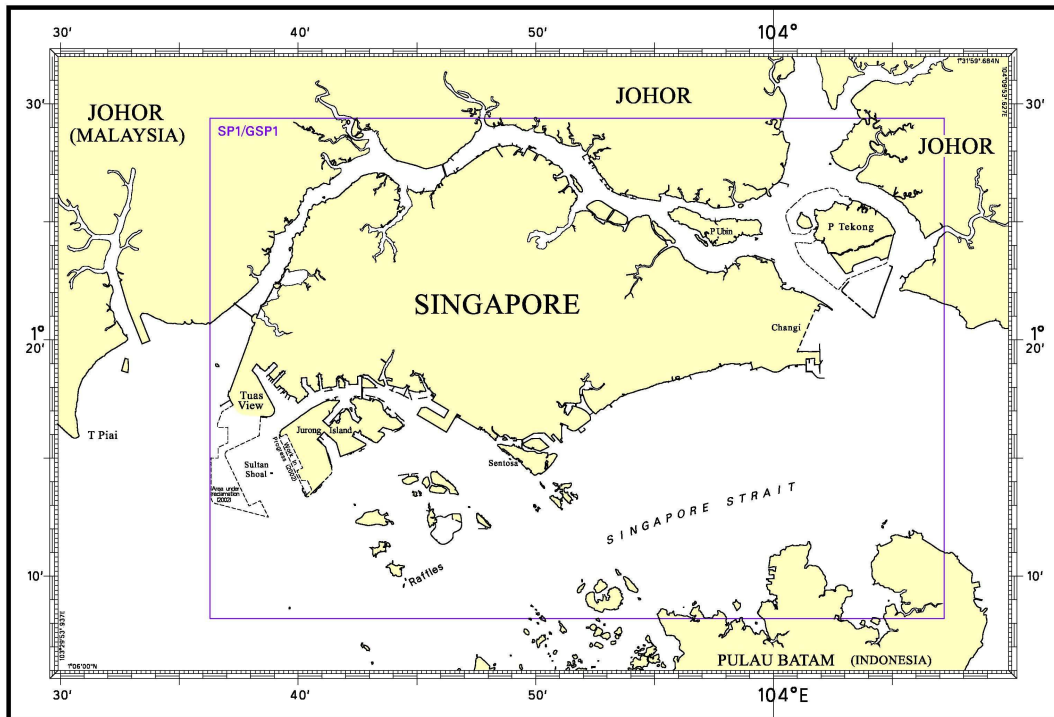
Notes:

- a) Notice to Mariners number followed by:
T indicates a Temporary Notice (eg. *NM 80T/2007).
P indicates a Preliminary Notice (eg. *NM 80P/2007).
- b) Bearings are referred to True Compass in degrees clockwise from 000° to 359°. Bearings related to lights are from seaward.
- c) Heights and elevations are above Mean High Water Springs.

INDEX OF CHARTS AND PUBLICATIONS

NOTICES	DESCRIPTION	PAGE	NOTICES	DESCRIPTION	PAGE
	Index of Singaporean Charts	222	*120	Updating of Publication "SINGAPORE PORT INFORMATION 2006/2007 EDITION"	233
	Index of Dual Badged Charts	223			
	New Publication "SINGAPORE PORT INFORMATION - EDITION 2008/2009"	224			
	New Publication "SINGAPORE TIDE TABLES YEAR 2008"	224			
	New Edition Singaporean Chart	225			
*111	SP1/GSP1	226			
	501	228			
112	200	227			
	201	227			
113	201	227			
*114	202	227			
*115	202	227			
	500	228			
	501	229			
116	501	229			
*117T	SP1/GSP1	230			
	202	230			
	501	230			
	502	230			
*118	Port Marine Notices	231			
*119P	Dredging from the Singapore Port Limit and the West Bound Lane of the TSS in the Singapore Strait	231			

I
INDEX OF CHARTS AND PUBLICATIONS
INDEX OF SINGAPOREAN CHARTS

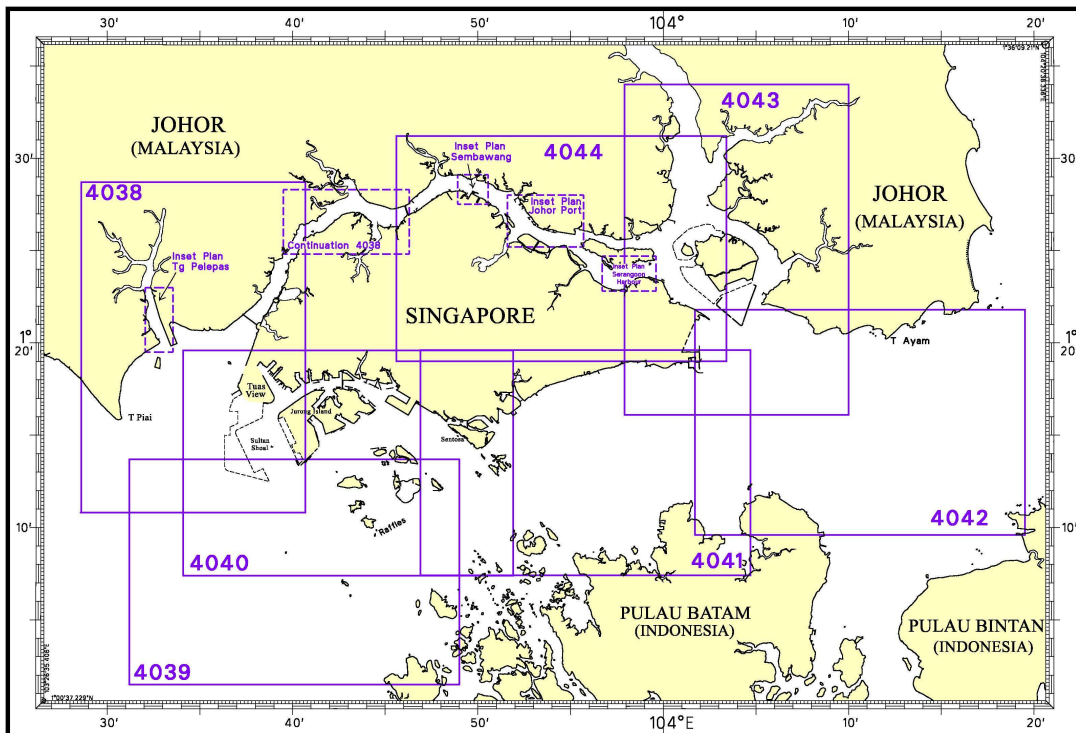
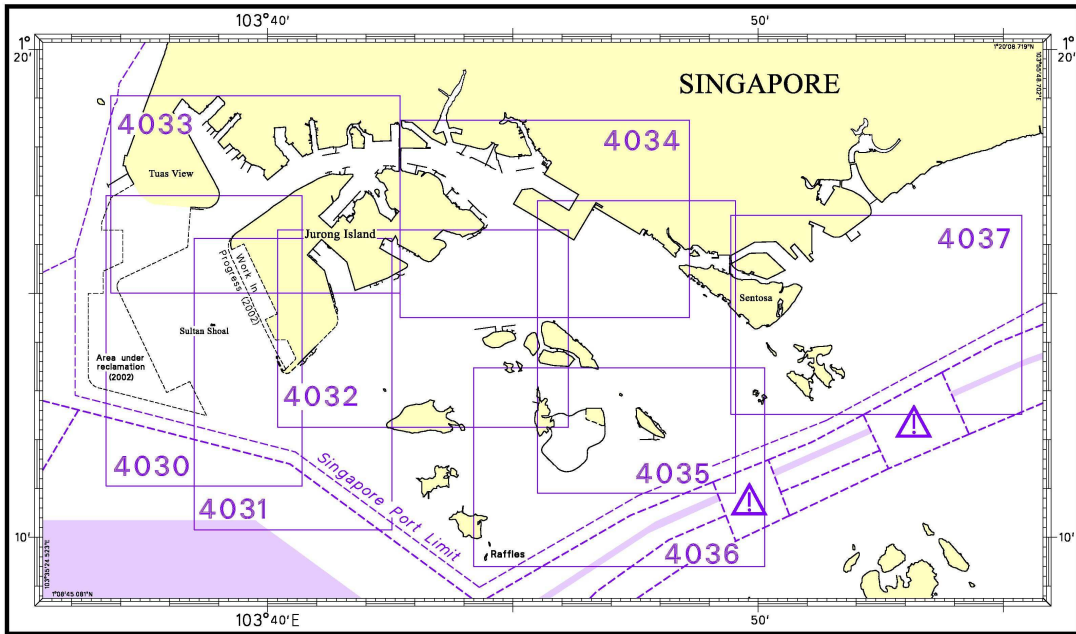


Notes:

Updated SINGAPOREAN Charts (excluding Charts SP1/GSP1 and 503) are available through our Print On Demand (POD). For more information, refer to Section III – Navigational Information and these charts can be purchased from our authorised Chart Agents:
 DPM (Singapore) Pte Ltd, E.W. Liner Charts & Publications Pte Ltd and Motion Smith.

I INDEX OF CHARTS AND PUBLICATIONS

INDEX OF DUAL BADGED CHARTS



II NEW PUBLICATIONS

NEW EDITION SINGAPORE PORT INFORMATION EDITION 2008/2009 TO BE PUBLISHED ON 1 JANUARY 2008.

Summary of Publication

This publication contains Port Information such as:

- 1) Routeing system in the Straits of Malacca and Singapore.
- 2) Guide to VHF Communication, Pilotage, and Navigational Channels – Controlling depths.
- 3) List of Aids to Navigation.
- 4) Port facilities - Wharves, Berths, Docks and Berth Operators' Information.
- 5) IALA Maritime Buoyage System.
- 6) Index and Chart Catalogue of Singaporean Charts and Dual Badged Charts.

To Whom Will It Be Useful

Mariners, shipping community, port users and other interested users.

Frequency / Year of Publication

Once every 2 years.

Cost of Publication

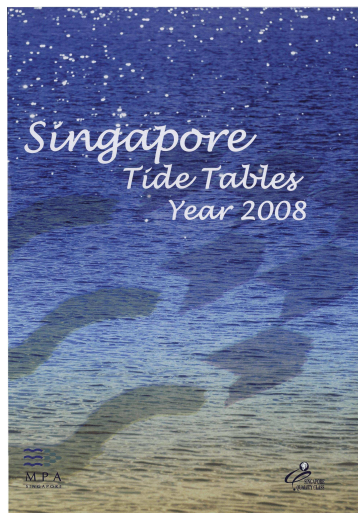
To be advised by Chart Agents.

Order Enquiries:

This publication would be available from the following Chart Agents:

- 1) DPM (Singapore) Pte Ltd
- 2) E.W. Liner Charts & Publications Pte Ltd
- 3) Motion Smith

(Please refer to Page 240 for details.)



SINGAPORE TIDE TABLES YEAR 2008

Summary of Publication

- (a) This 239 page book contains the following information:
The predictions consist of 5 main segments to facilitate easy reference:
- High and Low Water Predictions
 - Hourly Tidal Height Predictions
 - Hourly Tidal Stream Predictions
 - Maximum and Slack Tidal Stream Predictions
 - Malacca Strait – High and Low Water Predictions
- The predictions cover stations in Singapore and selected stations along the West Coast of Peninsular Malaysia.
- (b) As in earlier publications, the presentation of the predictions is enhanced with colour codes so as to differentiate the various states of tidal heights, eg falling or rising tide and tidal stream directions. Moon phases, eg full and new moon, are also included in each calendar month to complement the prediction values.
- (c) The Tidal Heights are given in metres above Chart Datum (CD). The CD is the datum of soundings shown on the Singaporean Charts and Dual Badged Charts covering the area. A table showing the various tidal levels eg. Mean High Water Springs, Mean Low Water Springs etc, at various stations with reference to CD is also included in this publication.

II NEW PUBLICATIONS

To Whom Will It Be Useful?

Mariners, shipping community, port users and other interested users.

Frequency/Year of Publication

Annually.

Cost of Publication

To be advised by Chart Agents.

Order Enquires:

This publication is available from the following Chart Agents:


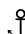
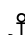
- 1) DPM (Singapore) Pte Ltd
- 2) E.W. Liner Charts & Publications Pte Ltd
- 3) Motion Smith

(Please refer to Page 240 for details.)

NEW EDITION SINGAPOREAN CHART PUBLISHED ON 5 OCTOBER 2007

Chart No.	:	201
Title	:	Malacca Strait – Tanjung Keling to Western Entrance of Singapore Strait
Coverage	:	Lat 1° 06.43'N 2° 16.99' N Long 101° 42.91'E 103° 26.45' E
Scale	:	1 : 200 000
Date Published	:	5 October 2007
Size of chart	:	960.0 X 650.0 mm
Remarks	:	This new edition includes new submarine cables and anchorages. 50 metre contours were added to further enhance the safety of navigation. This would complement the other 200 series charts. Tidal height levels were updated based on the Admiralty Tide Tables. This new edition supersedes the earlier edition published on 15 September 2003.




II
NOTICES TO MARINERS AND CHART CORRECTIONS

SP1/GSP1	2Ed 19/07/07 Last 107/2007	(Port Marine Circular No. 9/2007)	*NM 111/2007
Insert	limit of fairway, pecked line, joining:		1°15.39'N 103°45.68'E
			1°15.94'N 103°46.50'E
	limit of fairway, pecked line, joining:		1°15.59'N 103°48.39'E
			1°14.35'N 103°47.12'E
			1°14.52'N 103°45.81'E
Delete	limit of anchorage area, pecked line, joining:		1°16.17'N 103°47.07'E
			1°15.77'N 103°46.79'E
	legend, Pasir Panjang Holding 		1°16.07'N 103°46.79'E
Insert	limit of anchorage area, pecked line, joining:		1°14.55'N 103°47.32'E
			1°13.95'N 103°47.75'E
	legend, Western Holding 		1°14.21'N 103°47.41'E
	limit of anchorage area, pecked line, joining:		1°14.22'N 103°48.38'E
			1°13.82'N 103°47.46'E
Relocate	legend, Western Petroleum A  (1°14.66'N, 103°47.47'E)		1°14.45'N 103°47.89'E
Delete	limit of anchorage area, pecked line, joining:		1°14.35'N 103°47.12'E
			1°14.92'N 103°46.84'E
	limit of anchorage area, pecked line, joining:		1°15.02'N 103°47.81'E
			1°15.26'N 103°47.63'E
	limit of anchorage area, pecked line, joining:		1°15.38'N 103°48.17'E
			1°15.46'N 103°48.08'E
	limit of anchorage area, pecked line, joining:		1°14.02'N 103°47.28'E
			1°14.43'N 103°48.23'E
	limit of fairway, pecked line, joining:		1°15.39'N 103°45.68'E
			1°15.60'N 103°46.59'E
			1°15.77'N 103°46.79'E
	limit of fairway and anchorage area, joining:		1°15.59'N 103°48.39'E
			1°14.92'N 103°46.84'E
			1°14.52'N 103°45.81'E

II
NOTICES TO MARINERS AND CHART CORRECTIONS

200	2Ed 30/11/05 Last NM 95/2007	(Admiralty Notices 43/4829/2007)	NM 112/2007
Insert	①		2°12.45'N 102°06.65'E
Substitute	dredged depth to, 15m for 19.1m		2°14.50'N 102°07.20'E
<hr/>			
201	3Ed 05/10/07	(Admiralty Notices 43/4829/2007)	NM 112/2007
Insert	①		2°12.45'N 102°06.65'E
Substitute	dredged depth to, 15m for 19.1m		2°14.50'N 102°07.20'E
		(Admiralty Notices 43/4821/2007)	NM 113/2007
Insert	leading line, pecked line for 2070m then firm line for 3400m, extending in direction 090° from:	(a)	1°32.24'N 101°54'.55'E
	legend, 270°, seaward end of:		(★) (a) above
Delete	former leading line, pecked and firm line, and legend 268.5°, extending in direction 088.5° from:		(a) above
<hr/>			
202	5Ed 19/10/06 Last NM 99/2007	(HD/SNM 9/80/2007)	*NM 114/2007
Substitute	Fl.5s18m12M for Fl.15s18m12M		1°09.98'N 103°23.33'E
		(HD/DB67/019/2007)	*NM 115/2007
Delete	legend, Takong, Q(6)+LFl.15s11m11M, Racon (TK) and symbol for racon and radar reflector		1°05.90'N 103°43.25'E
Insert	legend, (collapsed)		1°05.90'N 103°43.25'E
Insert	★ Takong, Q(6)+LFl.15s7m9M		1°05.90'N 103°43.20'E

II
NOTICES TO MARINERS AND CHART CORRECTIONS

500	5Ed 30/08/07 Last NM 95/2007	(HD/DB67/019/2007)	*NM 115/2007
Delete	legend, Takong, Q(6)+LFI.15s11m11M, Racon (TK)(3cm) and symbol for racon and radar reflector	1°05.90'N	103°43.25'E
Insert	★ <i>Takong, Q(6)+LFI.15s7m9M</i>	1°05.90'N	103°43.20'E
<hr/>			
501	4Ed 21/09/06 Last NM 95/2007	(Port Marine Circular No. 9/2007)	*NM 111/2007
Insert	limit of fairway, pecked line, joining:	1°15.39'N 1°15.94'N	103°45.68'E 103°46.50'E
	limit of fairway, pecked line, joining:	1°15.59'N 1°14.35'N 1°14.52'N	103°48.39'E 103°47.12'E 103°45.81'E
Delete	limit of fairway and anchorage area, pecked line, joining:	1°15.59'N 1°14.92'N 1°14.52'N	103°48.39'E 103°46.84'E 103°45.81'E
	limit of anchorage area, pecked line, joining:	1°15.99'N 1°15.77'N 1°15.94'N	103°46.95'E 103°46.79'E 103°46.50'E
	legend, Pasir Panjang Holding 	1°15.93'N	103°46.72'E
Insert	limit of anchorage area, pecked line, joining:	1°14.55'N 1°13.95'N	103°47.32'E 103°47.75'E
	legend, Western Holding 	1°14.21'N	103°47.41'E
	limit of anchorage area, pecked line, joining:	1°14.22'N 1°13.82'N	103°48.38'E 103°47.46'E
Relocate	legend, Western Petroleum A  (1°14.66'N, 103°47.47'E)	1°14.45'N	103°47.89'E
Delete	limit of anchorage area, pecked line, joining:	1°14.35'N 1°14.92'N	103°47.12'E 103°46.84'E
	limit of anchorage area, pecked line, joining:	1°15.02'N 1°15.26'N	103°47.81'E 103°47.63'E

II NOTICES TO MARINERS AND CHART CORRECTIONS

limit of anchorage area, pecked line, joining:	1°15.38'N	103°48.17'E
	1°15.46'N	103°48.08'E
limit of anchorage area, pecked line, joining:	1°14.02'N	103°47.28'E
	1°14.43'N	103°48.23'E
limit of fairway, pecked line, joining:	1°15.39'N	103°45.68'E
	1°15.60'N	103°46.59'E
	1°15.77'N	103°46.79'E

(HD/DB67/019/2007)

***NM 115/2007**

Delete	legend, Takong, Q(6)+LFI.15s11m11M, Racon (TK)(3cm) and symbol for racon and radar reflector	1°05.90'N	103°43.25'E
Insert	legend, (<i>collapsed</i>)	1°05.90'N	103°43.25'E
Insert	★ Takong, Q(6)+LFI.15s7m9M	1°05.90'N	103°43.20'E

(Indonesian Chart 347 – Apr 2004)

NM 116/2007

Insert	depth 19_1 enclosed by 20m contour	1°08.36'N	103°38.73'E
	depth 9_5 enclosed by 10m contour	1°08.07'N	103°41.07'E
	depth 8 enclosed by 10m contour	1°07.08'N	103°41.12'E
	depth 5_7 enclosed by 10m contour	1°06.78'N	103°40.93'E
	depth 9_5 enclosed by 10m contour	1°06.75'N	103°42.05'E

II TEMPORARY AND PRELIMINARY NOTICES

SP1/GSP1 2Ed 19/07/07 Last NM 107/2007 (HD/DB67/019/2007) ***NM 117T/2007**

Delete legend, "Extinguished" against Batu Berhanti light beacon 1°11.09'N 103°52.99'E
(Previous NM 11/108T/2007 is cancelled)

202 5Ed 19/10/06 Last NM 99/2007 (HD/DB67/019/2007) ***NM 117T/2007**

Delete legend, "Extinguished" against Batu Berhanti light beacon 1°11.08'N 103°52.99'E
(Previous NM 11/108T/2007)

 **Q(6)+LFI.15s** 1°05.90'N 103°43.30'E
(Previous NM 09/88T/2007 is cancelled)

501 4Ed 21/09/06 Last NM 95/2007 (HD/DB67/019/2007) ***NM 117T/2007**

Delete legend, "Extinguished" against Batu Berhanti light beacon 1°11.09'N 103°52.99'E
(Previous NM 11/108T/2007)

 **Q(6)+LFI.15s** 1°05.90'N 103°43.30'E
(Previous NM 09/88T/2007 is cancelled)

502 3Ed 25/10/05 Last NM 102/2007 (HD/DB67/019/2007) ***NM 117T/2007**

Delete legend, "Extinguished" against Batu Berhanti light beacon 1°11.09'N 103°52.99'E
(Previous NM 11/108T/2007 is cancelled)

III NAVIGATIONAL INFORMATION

*(NM 118/2007) PORT MARINE NOTICES

These notices can be accessed directly from MPA website:

http://www.mpa.gov.sg/circulars_and_notices/portmarine_notices/pm_notices.htm

PMN No.	Subject
148/2007	Marine construction at Jurong Port, J3 / J4 Berth.
162/2007	A) Maintenance dredging works at Tanjong Pagar, Keppel and Brani Terminals. B) Upgrading of Berth K12 at Keppel Terminal.

*(NM 119P/2007) DREDGING FROM THE SINGAPORE PORT LIMIT AND THE WEST BOUND LANE OF THE TRAFFIC SEPARATION SCHEME IN THE SINGAPORE STRAIT

Purpose

Mariners navigating in the Singapore Strait are hereby informed that dredging operations will be carried out from the Singapore Port Limit and the westbound lane of the Traffic Separation Scheme.

Date

With effect from 17 Dec 2007 until 17 Dec 2011 (48 months).

Duration

Day light operation including Sunday and Public Holidays.

Working Area

Within an area bounded by the following coordinates from Singapore Port Limit and the area within the westbound lane of the Traffic Separation Scheme (please see chart attached):

WGS 84 Datum		
Points	Lat. (N)	Long. (E)
1	1°15.827'	103°57.737'
2	1°14.865'	103°58.134'
3	1°13.298'	103°54.401'
4	1°13.884'	103°54.131'

All vessels are advised to navigate with caution and keep clear of the working area.

Vessels

Vessels involved in the operations will display the appropriate day and night signals and will stand by on VHF Ch 14 and 12 and shall follow any traffic information given by Vessel Traffic Service of Singapore (VTIS).

Navigational Broadcast

Navigational warning broadcast will be promulgated by (VTIS) on VHF CH 09 and NAVTEX to inform vessels of the dredging operation. Mariners are to maintain a listening watch for the above safety information.

Caution

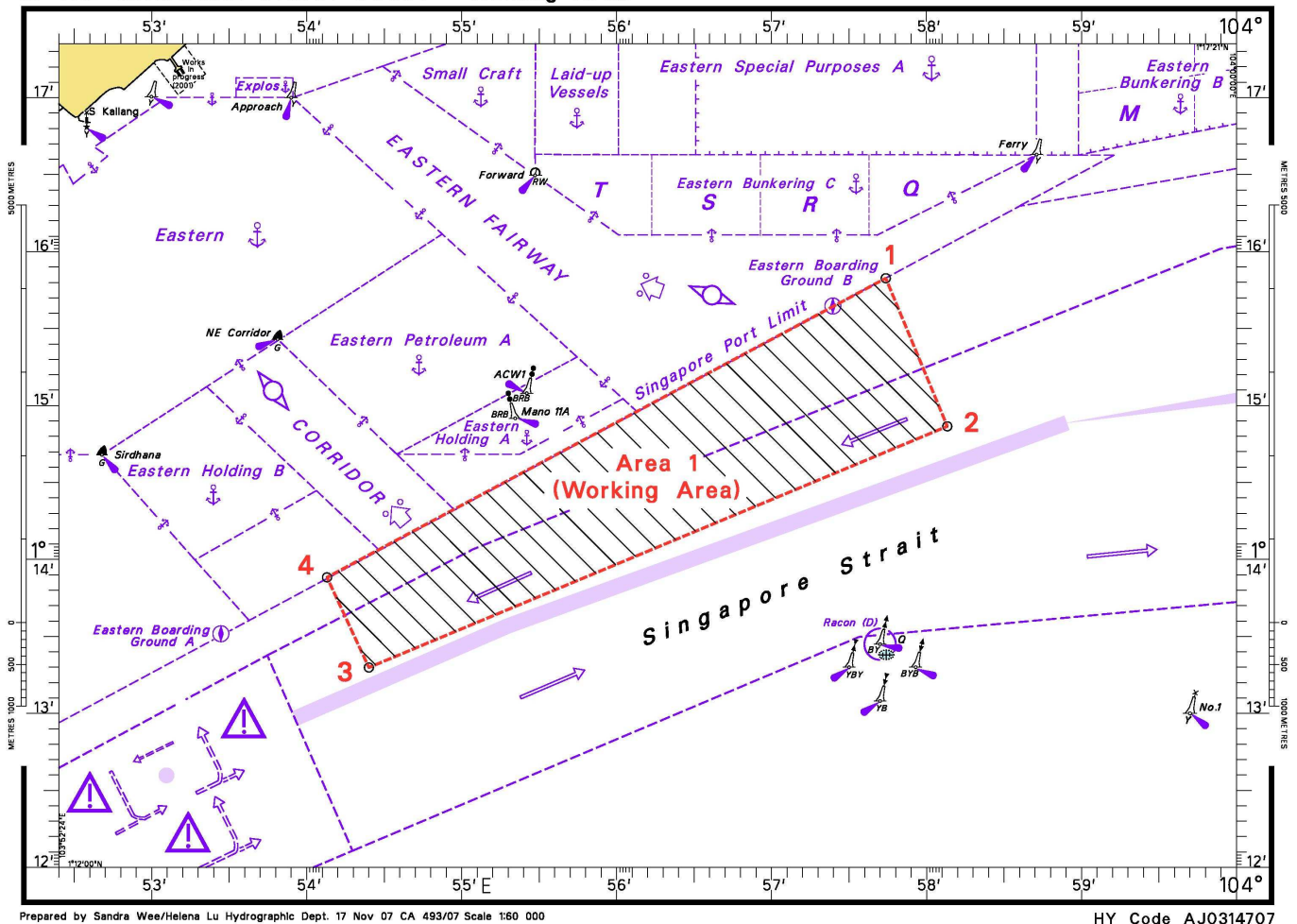
Mariners are advised to:

- (a) Navigate with caution and proceed at slow speed when approaching the area; and
- (b) Keep well clear and avoid entering the working area.

Charts affected: SP1/GSP1, 202, 501, 502, 4037 & 4041
Source: HD/DB67/20/2007

III NAVIGATIONAL INFORMATION

DREDGING FROM THE SINGAPORE PORT LIMIT AND THE WEST BOUND LANE OF THE TSS IN THE SINGAPORE STRAIT (Area 1 - Working Area)



SINGAPOREAN PRINT ON DEMAND (POD) CHARTS

Print On Demand (POD) Charts are the most up-to-date paper nautical charts printed for navigational use. These nautical charts are produced in accordance with the International Hydrographic Organisation (IHO) charting specifications. These official nautical charts are continually updated to the latest Notices to Mariners before they are printed and sold to users.

BENEFITS TO OUR CUSTOMERS

Convenience

Customers need not make numerous hand corrections to the nautical charts before use. In addition the updated POD Charts are more accurate and reliable than offset printed charts with hand corrections.

Clarity

Clarity in the presentation of updated information as compared to lithographic printed charts, where in some cases there are several overlapping corrections over existing information.

Coverage

The POD Charts cover the Malacca and Singapore Straits, from One Fathom Bank to Horsburgh Lighthouse.

III
AMENDMENTS TO PUBLICATIONS

***(NM 120/2007) UPDATING OF PUBLICATION "SINGAPORE PORT INFORMATION 2006/2007 EDITION"**

1 Page 152

Item 16B JURONG ISLAND – BANYAN BASIN (UNIVERSAL TERMINALS (S) PTE LTD)
(1°14.5'N, 103°41.5'E)

Insert the following:

Berth	Length of Berth	Depth Alongside (Year Surveyed)	Controlling Depth In Approaches
OMU 1	380m	23.7m (2007)	15.0m (From East) 22.1m (From West)
OMU 2	380m	23.5m (2007)	15.0m (From East) 16.5m (From West)
OMU 3	230m	22.8m (2007)	15.0m (From East) 16.5m (From West)
OMU 5	160m	23.4m (2007)	10.7m
OMU 6	122m	17.3m (2007)	10.7m
OMU 7	122m	18.7m (2007)	10.7m
OMU 8	169m	10.6m (2007)	10.7m
OMU 9	141m	10.8m (2007)	10.7m
OMU 10	156m	10.8m (2007)	10.7m
OMU 11	430m	17.7m (2007)	15.0m (From East) 16.5m (From West)
OMU 12			
OMU 13			

Source: HD/HY Codes E00105107 to E00105307 & E00105507

2 Page 147 - Item 7

PASIR PANJANG TERMINAL (PSA Corporation Ltd) (1°17.2'N, 103°46.1'E)

Insert the following:

Berth	Length of Berth	Depth Alongside (Year Surveyed)	Controlling Depth In Approaches
P10	326m	15.0m (2007)	15.0m

Source: HD/HY Code C00107807

IV
REPRINT OF RADIO NAVIGATIONAL WARNINGS

Nil

V
**REPRINT OF ADMIRALTY NOTICES TO MARINERS
 FOR DUAL BADGED CHARTS**

These notices can be accessed directly from UKHO Website:

<http://www.ukho.gov.uk/amd/weeklyNms.asp>

4713* SINGAPORE - East Johor Strait - Pulau Punggol Timor Northwards and Pulau Serangoon South-eastwards - Mooring buoys.

Source: Maritime and Port Authority of Singapore

Chart 4044 [*previous update 4258/07*] WGS84 DATUM

Insert	 <i>Fl.Y.4s B4</i>	1° 25'·54N., 103° 53'·47E.
	 <i>Fl.Y.4s H1</i>	1° 23'·86N., 103° 56'·11E.


Chart 4044 (plan B, Pelabuhan Johor (Johor Port)) [*previous update 4258/07*] WGS84 DATUM

Insert	 <i>Fl.Y.4s B4</i>	1° 25'·542N., 103° 53'·465E.
--------	---	------------------------------

4714* SINGAPORE - Sentosa Northwards - Cruise Bay - Buoyage.

Source: Maritime and Port Authority of Singapore

Chart 4035 [*previous update 4598/07*] WGS84 DATUM

Delete	 <i>Fl.Y.4s PO-KB1</i>	1° 15'·825N., 103° 48'·917E.
	 <i>Fl.Y.6s PO-KB2</i>	1° 15'·775N., 103° 48'·834E.

4835* SINGAPORE - Changi, Southwards - Submarine cable. Legend.

Source: Maritime and Port Authority of Singapore

Chart 4041 [*previous update 4597/07*] WGS84 DATUM

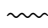
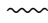
Delete	submarine cable,  , joining:	1° 19'·01N., 103° 58'·91E. (shore) 1° 18'·67N., 103° 58'·98E. 1° 18'·57N., 103° 59'·29E. 1° 18'·44N., 104° 00'·12E. 1° 18'·25N., 104° 00'·55E. 1° 16'·99N., 104° 02'·58E. (port limit)
	legend, <i>Buried</i> , centred on:	1° 17'·48N., 104° 01'·82E.

Chart 4042 [*previous update 4593/07*] WGS84 DATUM

Delete	submarine cable,  , joining:	1° 17'·53N., 104° 01'·70E. (W border) 1° 16'·99N., 104° 02'·58E. (port limit)
	legend, <i>Buried</i> , centred on:	1° 17'·36N., 104° 02'·02E.

V
REPRINT OF ADMIRALTY NOTICES TO MARINERS
FOR DUAL BADGED CHARTS

Chart 4043 [*previous update 4593/07*] WGS84 DATUM

Delete submarine cable, , joining: 1° 19'·01N., 103° 58'·91E.
 (shore)
 1° 18'·67N., 103° 58'·98E.
 1° 18'·57N., 103° 59'·29E.
 1° 18'·44N., 104° 00'·12E.
 1° 18'·25N., 104° 00'·55E.
 1° 16'·99N., 104° 02'·58E.
 (port limit)
 legend, *Buried*, centred on: 1° 17'·48N., 104° 01'·82E.

4854* SINGAPORE - Tuas View - Tuas Bay - Mooring buoy.

Source: Maritime and Port Authority of Singapore

Chart 4033 [*previous update 4600/07*] WGS84 DATUM

Delete  PSA 2 1° 18'·427N., 103° 38'·353E.

4855* SINGAPORE - Jong Fairway - Pulau Bukom - Beacons.

Source: Maritime and Port Authority of Singapore

Chart 4032 [*previous update 4599/07*] WGS84 DATUM

Delete symbol, yellow beacon with topmark 1° 14'·408N., 103° 45'·638E.
 1° 14'·421N., 103° 45'·675E.

Chart 4035 [*previous update 4714/07*] WGS84 DATUM

Delete symbol, yellow beacon with topmark 1° 14'·408N., 103° 45'·638E.
 1° 14'·421N., 103° 45'·675E.

Chart 4040 [*previous update 4600/07*] WGS84 DATUM

Delete symbol, yellow beacon with topmark 1° 14'·40N., 103° 45'·63E.
 1° 14'·42N., 103° 45'·67E.

4856* SINGAPORE - Tuas View Westwards - Buoy.

Source: Maritime and Port Authority of Singapore

Chart 4038 [*previous update 4600/07*] WGS84 DATUM

Move  *Fl.Y.4s TMSI 1*, from:
 to: 1° 18'·08N., 103° 36'·94E.
 1° 18'·27N., 103° 37'·05E.

V
REPRINT OF ADMIRALTY NOTICES TO MARINERS
FOR DUAL BADGED CHARTS

Chart 4040 [*previous update 4855/07*] WGS84 DATUM

Move  *Fl.Y.4s* TMSI 1, from: 1° 18'·08N., 103° 36'·94E.
to: 1° 18'·27N., 103° 37'·05E.

5039* SINGAPORE - Pulau Sebarok South-westwards - Depths.

Source: Maritime and Port Authority of Singapore

Chart 4035 [*previous update 4855/07*] WGS84 DATUM

Insert	depth 9 ₇ depth 24 ₆	(a) 1° 12'·084N., 103° 47'·623E. (b) 1° 11'·712N., 103° 47'·395E. 1° 11'·589N., 103° 47'·250E.
Substitute	depth 25 ₆ depth 24 ₇ depth 25 ₅ for depth 25 ₈ depth 28 ₇ for depth 27 ₇	(c) 1° 11'·598N., 103° 47'·476E. (d) 1° 11'·587N., 103° 47'·319E. 1° 11'·453N., 103° 47'·164E. 1° 11'·417N., 103° 47'·470E.
Delete	depth 10, close NW of: depth 27 ₇ , close SE of: depth 24 ₉ , close NNE of: depth 24 ₃ , close NW of:	(a) above (b) above (c) above (d) above

Chart 4036 [*previous update 4597/07*] WGS84 DATUM

Insert	depth 9 ₇ depth 24 ₆	(a) 1° 12'·084N., 103° 47'·623E. (b) 1° 11'·712N., 103° 47'·395E. 1° 11'·589N., 103° 47'·250E.
Substitute	depth 25 ₆ depth 24 ₇ depth 25 ₅ for depth 25 ₈ depth 28 ₇ for depth 27 ₇	(c) 1° 11'·598N., 103° 47'·476E. (d) 1° 11'·587N., 103° 47'·319E. 1° 11'·453N., 103° 47'·164E. 1° 11'·417N., 103° 47'·470E.
Delete	depth 10, close NW of: depth 27 ₇ , close SE of: depth 24 ₉ , close NE of: depth 24 ₃ , close NW of:	(a) above (b) above (c) above (d) above

Chart 4039 [*previous update 4597/07*] WGS84 DATUM

Insert	depth 9 ₇ depth 25 ₆ depth 24 ₆	1° 12'·08N., 103° 47'·62E. (a) 1° 11'·60N., 103° 47'·48E. 1° 11'·59N., 103° 47'·25E.
Delete	depth 24 ₉ , close N of:	(a) above

V
REPRINT OF ADMIRALTY NOTICES TO MARINERS
FOR DUAL BADGED CHARTS

5039* SINGAPORE - Pulau Sebarok South-westwards - Depths. (continued)**Chart 4040** [*previous update 4856/07*] WGS84 DATUM

Insert	depth 9 ₇	(a)	1° 12'·08N., 103° 47'·62E.
	depth 25 ₆	(b)	1° 11'·60N., 103° 47'·48E.
	depth 24 ₆		1° 11'·59N., 103° 47'·25E.
Delete	depth 10, adjacent to:	(a)	above
	depth 24 ₉ , close N of:	(b)	above

Chart 4041 [*previous update 4835/07*] WGS84 DATUM

Insert	depth 9 ₇		1° 12'·08N., 103° 47'·62E.
	depth 25 ₆	(a)	1° 11'·60N., 103° 47'·48E.
	depth 24 ₆		1° 11'·59N., 103° 47'·25E.
Delete	depth 24 ₉ , close N of:	(a)	above

Updated to Admiralty Notices to Mariners Edition No. 46 of 2007 dated 15 November 2007.

SINGAPORE ELECTRONIC NAVIGATIONAL CHARTS (ENC) DISTRIBUTORS

Please approach any of the appointed distributors to purchase the Singapore ENC.

CONTACT PERSON/ DESIGNATION	ADDRESS	TELEPHONE/FAX NO./EMAIL/WEBSITE
Mr Chong Chee Meng General Manager	DPM (Singapore) Pte Ltd 1 Maritime Square, #09-72 Harbour Front Centre, Singapore 099253	Tel. No.: +65 6270 4060 Fax No.: +65 6276 3858 Email: sales@dpsmsingapore.com.sg Website: http://www.dpsmsingapore.com.sg
Mr Hamzah Akhbar MDS Branch Manager	Kelvin Hughes(S) Pte Ltd 8 Pandan Avenue #02-00, Singapore 609384	Tel. No.: +65 6545 9880 ext.24 Fax No.: +65 6545 8892 Email: hamzah.akhbar@khsing.com Website: http://www.kelvinhughes.co.uk
Mr Philip Loh Sales Manager	Motion Smith 76 Shenton Way #01-01, Singapore 079119	Tel. No.: +65 6220 5098 Fax No.: +65 6225 4902 Email: sales@motsmith.com Website: http://www.motsmith.com
Mr Dexter Lee Regional Sales Manager	Transas Marine Pacific Pte Ltd 750C Chai Chee Road, Technopark@Chai Chee, #04-07 Singapore 469003	Tel. No.: +65 6443 3061 Fax No.: +65 6443 3025 Email: dexter@transas.com.sg Website: http://www.transas.com.sg
Mr Choy Kum Weng Director	Vector Services Pte Ltd 15 West Coast Highway, #02-14A Pasir Panjang Building Singapore 117861	Tel. No.: +65 6777 3602 Fax No.: +65 6777 9203 Email: kwchoy@pacific.net.sg
Mr George Arts President	Marine Press of Canada 640 Rue St-Paul Ouest, Suite 300 Montreal (QC) Canada, H3C1L9	Tel. No.: (514) 866-8342 Fax No.: (514) 866-9050 Email : sales@marinepress.com Website: http://www.marinepress.com
Mr Thomas Wilde Superintendent	HanseNautic GmbH Bade & Hornig, Eckardt & Messtorff Herrengaben 31 D-20459 Hamburg, Germany	Tel. No.: +49 40 374 811-32 Fax No.: +49 40 366 400 Email: wilde@hansenautic.de Website : http://www.HanseNautic.com
Ms Verena Borsos Manager	SevenCs AG + Co. KG Ruhrstrasse 90, D-22761 Hamburg, Germany	Tel. No.: +49 40 853 58 6940 Fax No.: +49 40 853 58 6949 Email: sales@chartworld.com Website : http://www.sevencs.com
Mr Keiji Shimizu ENC Manager	Japan Hydrographic Association ENC Service Division 5-3-3 Tsukiji, Chuo-ku Tokyo 104-0045, Japan	Tel. No.: +81 3 3543 0752 Fax No.: +81 3 3543 0695 Email: enc-support@jha.jp Website: http://www.jha.jp.com
Mr Jester-Kim Foreign Business Department Manager	E_MLX Co. Ltd Ssangyong Research No.2 Lab Sinseong-Dong 100 Yusong-Gu, Daejoen 305-804, Korea (ROK)	Tel. No.: +82 42 865 1893 Fax No.: +82 42 865 1884 Email: Jester-kim@emlx.co.kr
Mr C G Kim Managing Director	Korean Ocean Development Co. Ltd 2ND Fl, Dongbang Bldg, 25-4, 4 Ga Jungang-Dong, Jung-Gu, Busan, South Korea	Tel. No.: +82 514 66 0760 Fax No.: +82 514 65 9345 Email: sales@chartkorea.com Website: http://www.chartkorea.com

SINGAPORE ELECTRONIC NAVIGATIONAL CHARTS (ENC) DISTRIBUTORS
Please approach any of the appointed distributors to purchase the Singapore ENC.

CONTACT PERSON/ DESIGNATION	ADDRESS	TELEPHONE/FAX NO./EMAIL/WEBSITE
Mr Kjell Nodland	Jeppesen Norway A/S P.O Box 212 , N-4379 Egersund, Norway	Tel No.: +47 514 64 700 Fax No.: +47 514 64 701 Email: info@c-map.no Website : http://www.c-map.no
Mr Roar Moe International Marketing Coordinator	Maritime Information System AS (MARIS) Danholmen 25, No.3115 Tonsberg, Norway	Tel. No.: +47 33 30 42 50 Fax No.: +47 33 30 42 51 Email: roar.moe@maris.no Website: http://www.maris.no
Ms Eva Hegland Sales, order and distributor support.	PRIMAR STAVANGER Lervigsveien 36, P.O Box 60, N-4001 Stavanger, Norway	Tel. No.: +47 51 93 9500 Fax No.: +47 51 93 9501 Email: sales@primar.org Website : http://www.primar-stavanger.org
Mr Andy Criddle Regional Sales Manager	United Kingdom Hydrographic Office Admiralty Way, Taunton, Somerset TA1 2DN United Kingdom	Tel. No.: +44 (0)1823 337900 Fax No.: +44 (0)1823 284077 Emails: vargroup@ukho.gov.uk & andrew.criddle@ukho.gov.uk Website: http://www.ukho.gov.uk

Agents for the Maritime and Port Authority of Singapore Publications

Agent's name : **DPM (Singapore) Pte Ltd**
Address : 1 Maritime Square #09-72, HarbourFront Centre,
Singapore 099253
Telephone : (65) 6270 4060
Fax No. : (65) 6276 3858
E-mail : sales@dpmsingapore.com.sg
Internet Web Site : <http://www.dpmsingapore.com.sg>

Agent's name : **E.W. Liner Charts & Publications Pte Ltd**
Address : 102F, Pasir Panjang Road, #08-01, Citilink Warehouse Complex,
Singapore 118530
Telephone : (65) 6323 0773
Fax No. : (65) 6323 0775
E-mail : ewliner@singnet.com.sg
Internet Web Site : <http://www.ewliner.com>

Agent's name : **Motion Smith**
Address : 76 Shenton Way # 01-01
Singapore 079119
Telephone : (65) 6220 5098
: (After office hours: 8163 9993)
Fax No. : (65) 6225 4902
E-mail : sales@motsmith.com
Internet Web Site : <http://www.motsmith.com>

HYDROGRAPHIC NOTE - Instructions

1. Mariners are requested to notify the Chief Hydrographer, Maritime and Port Authority of Singapore, when new or suspected dangers to navigation are discovered, changes are observed in aids to navigation or where corrections to nautical publications may be necessary. Reports, which cannot be confirmed or are lacking in certain details should not be withheld.
2. Any ambiguities of time, positioning and depth should be stressed and any firm expectation of being able to check the information provided on a following voyage should be mentioned.
3. Mariners using satellite position fixing systems, eg. GPS, should provide details of equipment and datum used (where applicable). Where bearings (true or magnetic) are taken visually or by radar to fix a position, it should include more than two objects in order to provide a check on its accuracy. A position may also be defined by bearing and distance from a conspicuous object eg. beacon, lighthouse etc.
4. The note should include a tracing or a digital image of the chart used and the details should be clearly marked.
5. Echo sounders frequently register greater depths than the advertised maximum depth for the equipment, eg. a trace appearing at 50 metres may be in fact be 550 metres or even 1050 metres for equipment whose maximum depth is 500 metres. Erroneous depths caused by 2nd transmission error can usually be recognised by the following:
 - (a) the tracing being weaker than normal for the depth registered,
 - (b) the trace appearing to pass through the transmission line,
 - (c) the feathery nature of the trace.
6. An acknowledgement of receipt will be sent. When a Notice to Mariners is issued, the sender's vessel or name is quoted as the source unless the same information is also received in foreign Notices to Mariners.
7. Reports of shoals, uncharted dangers and defects in aids to navigation may also be made to the appropriate Singapore Port Operations Control Station on VHF Channels 10, 12, 14, 68 or 73.

HYDROGRAPHIC NOTE

To:

Chief Hydrographer
Hydrographic Department
Maritime and Port Authority of Singapore
460 Alexandra Road PSA Building #20-00
Singapore 119963

Tel : (65) 6375 1227
Fax : (65) 6278 7646
Email : hydrographic@mpa.gov.sg

Sender's Contact Details :

Date :
Name of Vessel :
Address of Sender :
Tel : Fax :
Email :

Nature of Observation :

General Location :
Subject :
Position : Lat. Long.
Charts Used :
Date & Time of Observation :
Details :
.....
.....
Attachment :

Equipment Used :

Type of Position Fixing : GPS / DGPS Others :
Type of Echo Sounder :

Name and Signature :

Ship's/Company's stamp :