



SINGAPOREAN NOTICES TO MARINERS

SECTION	CONTENT	Page
I	Index of Charts & Publications	223
II	New Publications	226
	Notices to Mariners and Chart Corrections	228
	Temporary and Preliminary Notices	230
III	Navigational Information	231
	Amendments to Publications	234
IV	Reprint of Radio Navigational Warnings	235
V	Reprint of Admiralty Notices to Mariners for Dual Badged Charts	236

The monthly Notices to Mariners contain corrective information affecting charts published by the Hydrographic Department, Maritime and Port Authority of Singapore. The information contained in these Notices should be updated on the charts affected. Notices under Section II apply only to the particular Singaporean Chart(s) indicated.

Mariners are requested to notify the Chief Hydrographer, Maritime and Port Authority of Singapore, immediately on the discovery of new dangers or suspected dangers to navigation and of changes or defects in aids to navigation. See Hydrographic Note on back page.

The monthly Singaporean Notices to Mariners can be accessed directly from the MPA website:
[http://www.mpa.gov.sg/sites/port_and_shipping/circulars_and_notices/singapore_notices_to_mariners\(ntm\).page](http://www.mpa.gov.sg/sites/port_and_shipping/circulars_and_notices/singapore_notices_to_mariners(ntm).page)

This service is offered free of charge.

The Chief Hydrographer of
Maritime and Port Authority of Singapore
wishes all users of Singaporean and Dual Badged Charts

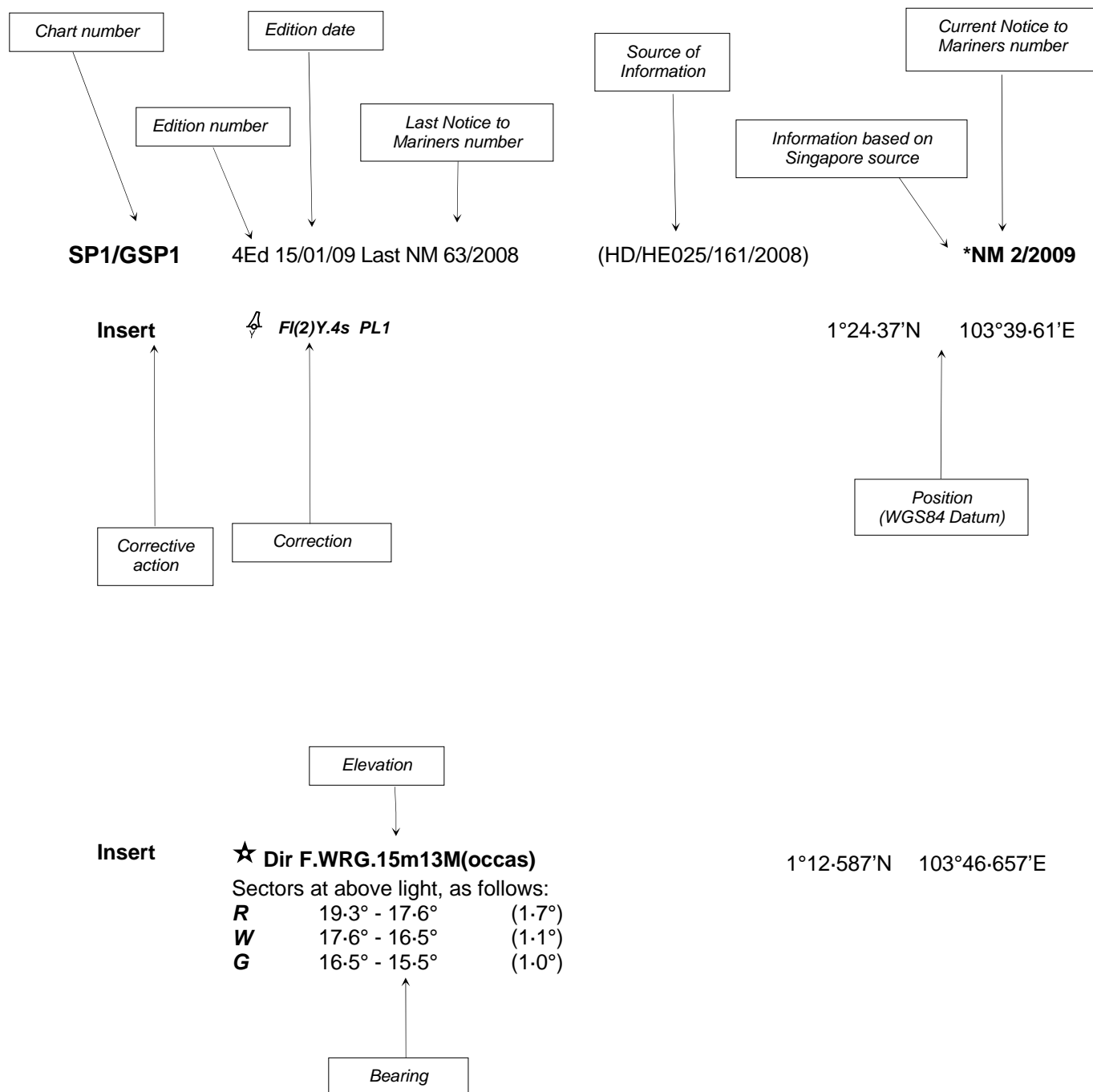
**A MERRY CHRISTMAS
AND
A HAPPY NEW YEAR**

Wishing all a safe voyage in Year 2010

Hydrographic Department
Maritime and Port Authority of Singapore
460 Alexandra Road
PSA Building #20-00
Singapore 119963
Tel: (65) 6375 1227
Fax: (65) 6278 7646

EXPLANATION OF FORMAT

The elements of a typical chart correction are explained below.



Notes:

- Notice to Mariners number followed by:
 - T** indicates a Temporary Notice (eg. ***NM 1T/2009**).
 - P** indicates a Preliminary Notice (eg. ***NM 1P/2009**).
- Bearings are true reckoned clockwise from 000° to 359° ; those relating to lights are from seaward.
- Heights and elevations are above Mean High Water Springs.

I
INDEX OF CHARTS AND PUBLICATIONS

DESCRIPTION	NOTICE NO.	PAGE NO.
Index of Singaporean Charts	-	223
Index of Dual Badged Charts	-	224
Index of Singapore Electronic Navigational Charts (ENC)	-	225
New Publication "SINGAPORE TIDE TABLES YEAR 2010"	-	226
New Publication "SINGAPORE PORT INFORMATION – EDITION 2010/2011"	-	226
New Edition Singaporean Chart	-	227
Singaporean Chart SP1/GSP1	*110	228
Singaporean Chart 201	111, 112	228
Singaporean Chart 202	111, 113	228
Temporary and Preliminary Notices	-	230
Port Marine Notices	*114	231
Dredging in the West Bound Lane of the Traffic Separation Scheme in the Singapore Strait	*115T	231
Singaporean Print-On-Demand (POD) Charts	*116	232
Amendments of Publications "SINGAPORE PORT INFORMATION 2008/2009 EDITION"	-	234
Reprint of Radio Navigational Warnings	-	235
Reprint of Admiralty Notices to Mariners for Dual Badged Charts	-	236
Singapore Electronic Navigational Charts (ENC) Distributors	-	238

* Denotes information are based on Singapore source.

I

INDEX OF CHARTS AND PUBLICATIONS

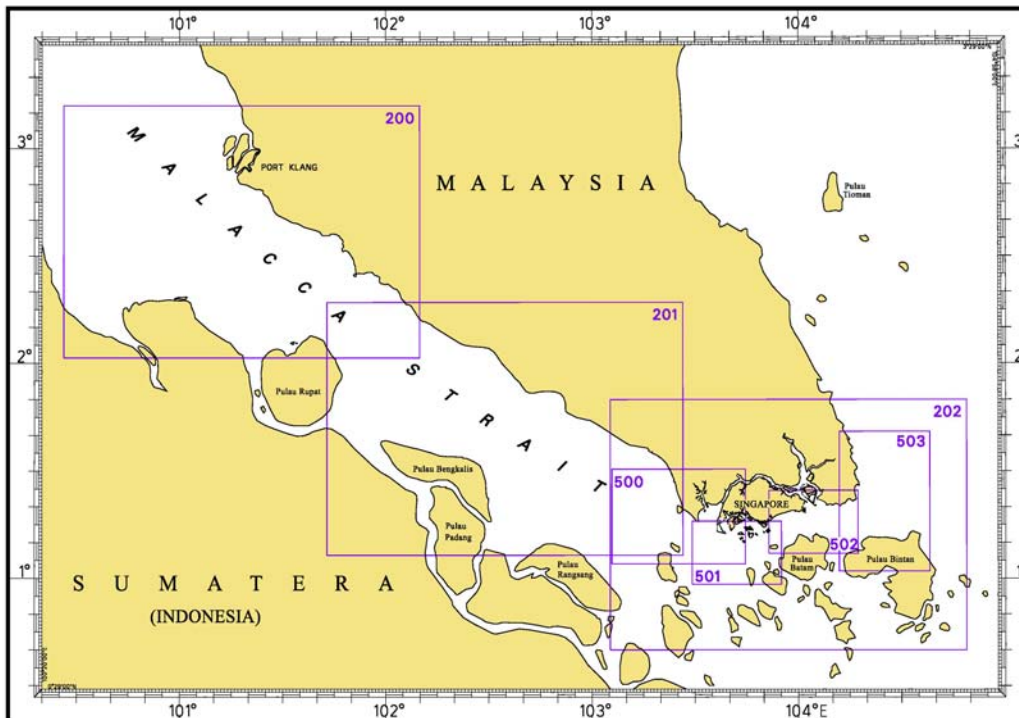
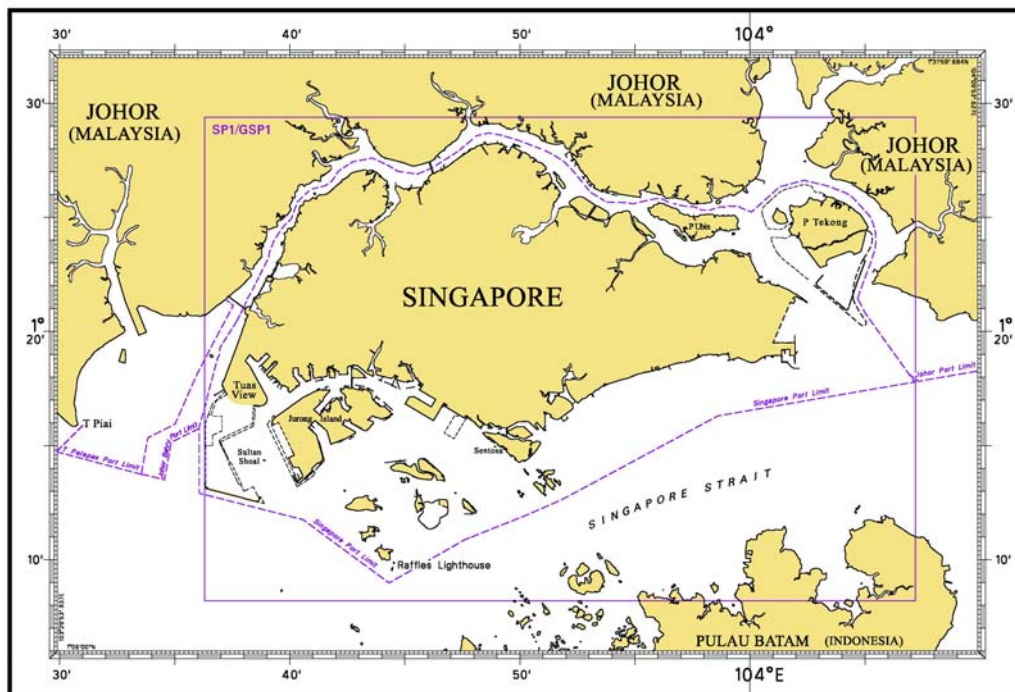
NOTICE NO.	DESCRIPTION	PAGE NO.	NOTICE NO.	DESCRIPTION	PAGE NO.
-	Index of Singaporean Charts	223	-	Reprint of Admiralty Notices to Mariners for Dual Badged Charts	236
-	Index of Dual Badged Charts	224	-	Singapore Electronic Navigational Charts (ENC) Distributors	238
-	Index of Singapore Electronic Navigational Charts (ENC)	225			
-	New Publication "SINGAPORE TIDE TABLES YEAR 2010"	226			
-	New Publication "SINGAPORE PORT INFORMATION - EDITION 2010/2011"	226, 227			
-	New Edition Singaporean Chart	227			
*110	SP1/GSP1	228, 229			
111	201, 202	228			
112	201	228			
113	202	228			
-	Temporary and Preliminary Notices	230			
*114	Port Marine Notices	231			
*115T	Dredging in the West Bound Lane of the Traffic Separation Scheme in the Singapore Strait	231			
*116	Singaporean Print-On-Demand (POD) Charts	232			
-	Admendments to Publications "SINGAPORE PORT INFORMATION 2008/2009 EDITION"	234			
-	Reprint of Radio Navigational Warnings	235			

* Denotes information are based on Singapore source.

I

INDEX OF CHARTS AND PUBLICATIONS

INDEX OF SINGAPOREAN CHARTS



Notes:

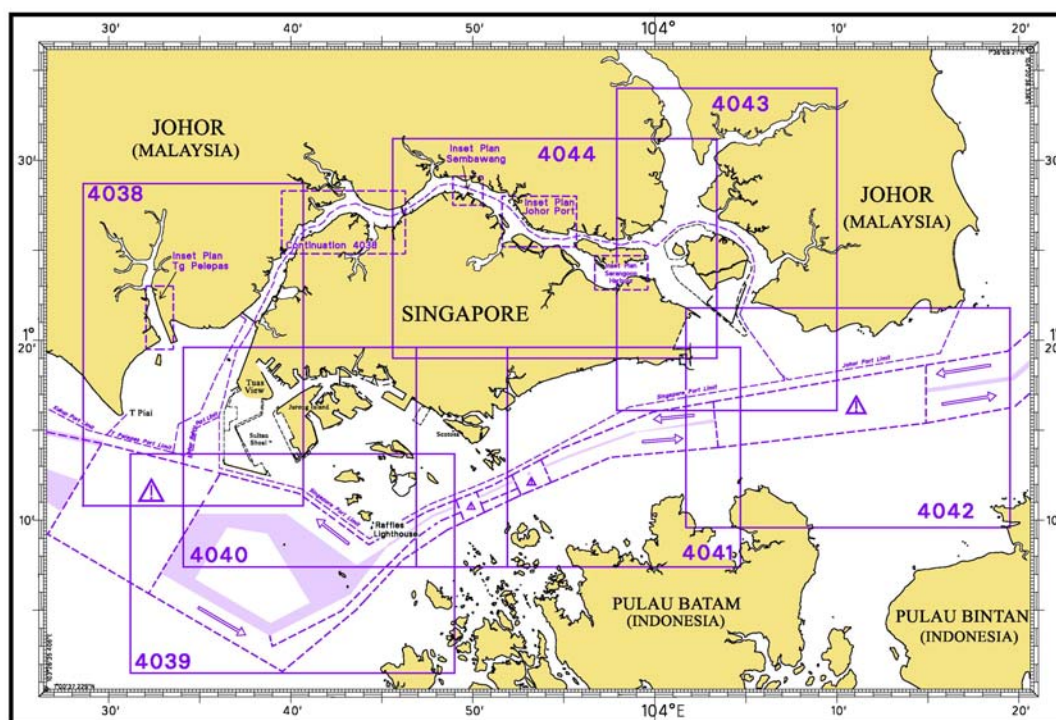
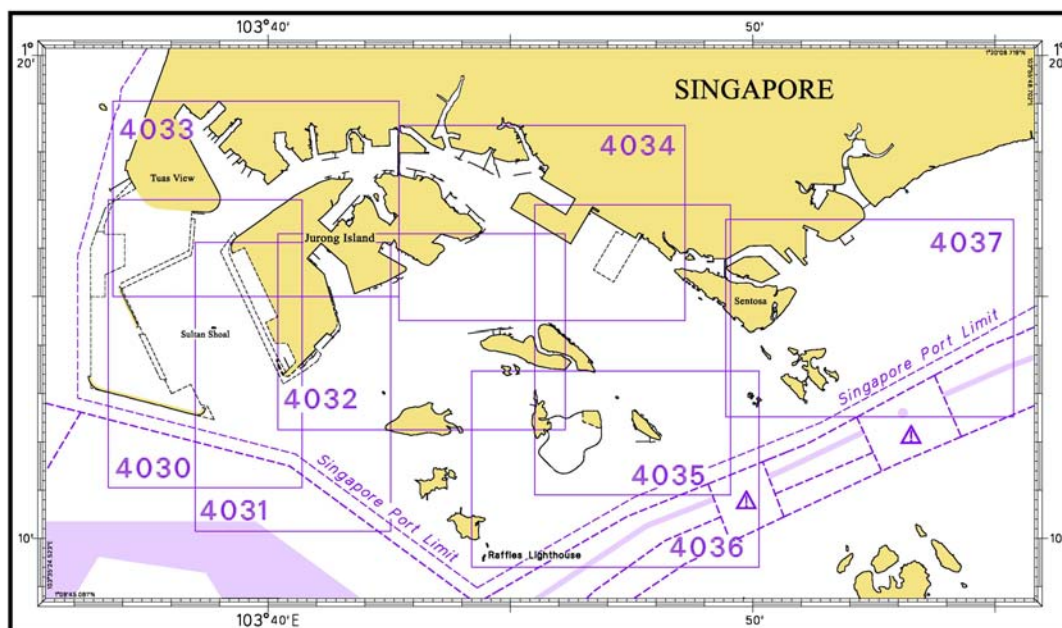
Updated SINGAPOREAN Charts are available through our Print-On-Demand (POD) Chart Service. For more information, refer to Section III – Navigational Information and these charts can be purchased from our authorised Chart Agents:

DPM (Singapore) Pte Ltd, E.W. Liner Charts & Publications Pte Ltd and Motion Smith.

I

INDEX OF CHARTS AND PUBLICATIONS

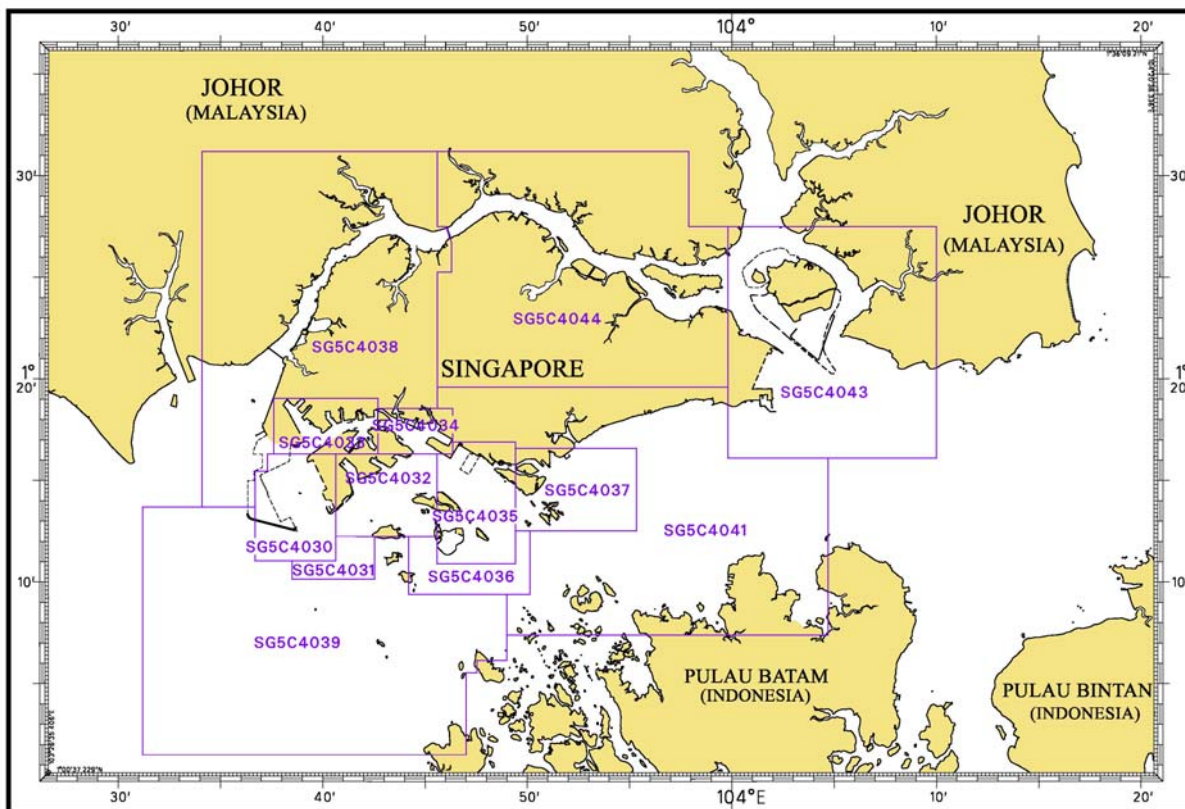
INDEX OF DUAL BADGED CHARTS



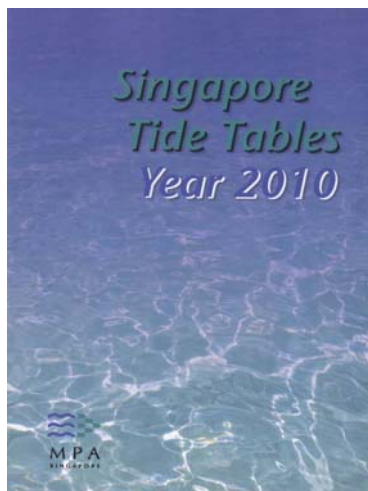
I

INDEX OF CHARTS AND PUBLICATIONS

INDEX OF SINGAPORE ELECTRONIC NAVIGATIONAL CHARTS (ENC)



II NEW PUBLICATIONS



SINGAPORE TIDE TABLES YEAR 2010

Summary of Publication

- (a) This 239-page book contains Tidal Height and Tidal Stream Predictions covering stations in Singapore Port waters and selected stations along the Malacca and Singapore Straits.

The predictions consist of 5 main segments to facilitate easy reference:

- High and Low Water Predictions
- Hourly Tidal Height Predictions
- Hourly Tidal Stream Predictions
- Maximum and Slack Tidal Stream Predictions
- Malacca Strait – High and Low Water Predictions

- (b) The presentation of the predictions is enhanced with colour codes so as to differentiate the various states of tidal heights, eg falling or rising tide and tidal stream directions. Moon phases, eg full and new moon, are also included in each calendar month to complement the prediction values.

- (c) The tidal heights are given in metres above Chart Datum (CD). The CD is the datum of soundings shown on the Singaporean Charts and Dual Badged Charts covering the area. A table showing the various tidal levels eg. Mean High Water Springs, Mean Low Water Springs etc, at various stations with reference to CD is also included in this publication.

To Whom Will It Be Useful?

Mariners, shipping community, port users and other interested users.

Frequency of Publication

Annually.

Cost of Publication

To be advised by Chart Agents.

Order Enquires:

This publication is available from the following Chart Agents:

- 1) DPM (Singapore) Pte Ltd
- 2) E.W. Liner Charts & Publications Pte Ltd
- 3) Motion Smith

(Please refer to Page 239 for details.)

NEW EDITION SINGAPORE PORT INFORMATION 2010/2011 EDITION TO BE PUBLISHED IN JANUARY 2010.

Summary of Publication

This publication contains Port Information such as:

- 1) Routeing system in the Straits of Malacca and Singapore.
- 2) Guide to VHF Communication, Pilotage, and Navigational Channels – Controlling depths.
- 3) List of Aids to Navigation.
- 4) Port facilities - Wharves, Berths, Docks and Berth Operators' Information.
- 5) IALA Maritime Buoyage System.
- 6) Index and Chart Catalogue of Singaporean Charts and Dual Badged Charts.

II NEW PUBLICATIONS

To Whom Will It Be Useful?

Mariners, shipping community, port users and other interested users.

Frequency / Year of Publication

Once every 2 years.

Cost of Publication

To be advised by Chart Agents.

Order Enquiries:

This publication would be available from the following Chart Agents:

- 1) DPM (Singapore) Pte Ltd
 - 2) E.W. Liner Charts & Publications Pte Ltd
 - 3) Motion Smith
- (Please refer to Page 239 for details.)

NEW EDITION SINGAPOREAN CHARTS TO BE PUBLISHED ON 21ST JANUARY 2010

Chart No.	:	SP1
Title	:	Anchorage and Aids to Navigation
Coverage	:	Lat 1° 08-20'N 1° 29-40' N Long 103° 35-70'E 104° 07-20' E
Scale	:	1: 60 000
Date Published	:	21 st January 2010
Size of chart	:	973.9 x 651.2 mm
Remarks	:	This new edition includes: - <ul style="list-style-type: none"> • New topography at east of Jurong Island. • Pulau Ular Jetty and Oil Tanking Jetty (Jurong Island). • Approaches to Pasir Panjang Reclamation Area. • Submarine cables from Tanah Merah and Changi Ferry Terminal. • Depth contour covering the entire charts.

This new edition supersedes the earlier edition published on 15th January 2009.

Chart No.	:	GSP1
Title	:	Anchorage and Aids to Navigation (with area reference)
Coverage	:	Lat 1° 08-20'N 1° 29-40' N Long 103° 35-70'E 104° 07-20' E
Scale	:	1: 60 000
Date Published	:	21 st January 2010
Size of chart	:	973.9 x 651.2 mm
Remarks	:	This new edition includes: - <ul style="list-style-type: none"> • New topography at east of Jurong Island. • Pulau Ular Jetty and Oil Tanking Jetty (Jurong Island). • Approaches to Pasir Panjang Reclamation Area • Submarine cables from Tanah Merah and Changi Ferry Terminal. • Depth contour covering the entire charts.

This new edition supersedes the earlier edition published on 15th January 2009.

II NOTICES TO MARINERS AND CHART CORRECTIONS

SP1/GSP1 4Ed 15/01/09 Last NM 103/2009 (Port Marine Notice 144/2009) ***NM 110/2009**



Insert The accompanying block showing new reclamation area, working area and buoyage at Pasir Panjang centred on : 1°15-85'N 103°47-26'E

Delete note on "Reclamation works in progress" 1°26-30'N 104°06-01'E

201 3Ed 5/10/07 Last NM 104/2009 (Admiralty Notice 45/5968/2009) **NM 111/2009**

Substitute  **Wk** for  1°15-72'N 103°19-84'E

(Peninsular Malaysia Marine Dept. Notice 68/2009) **NM 112/2009**

Substitute  **Fl(2)6s30m15M** for  **Fl(2)** 1°37-21'N 102°57-13'E
Mudah Utara

202 6Ed 24/09/09 (Admiralty Notice 45/5968/2009) **NM 111/2009**

Substitute  **Wk** for  1°15-72'N 103°19-84'E

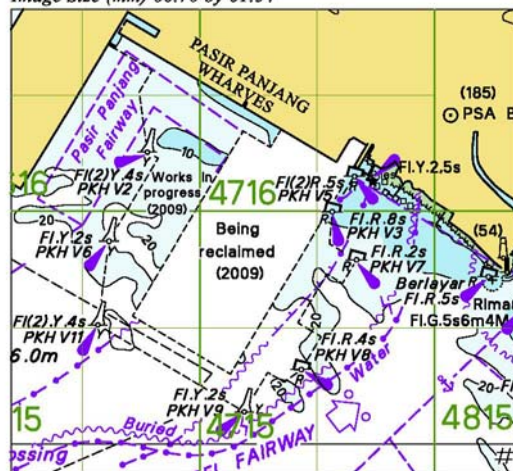
(Admiralty Notice 48/6352/2009) **NM 113/2009**

Insert islet, enclosed by danger line, dotted line, centred on: 0°55-15'N 103°42-68'E

II

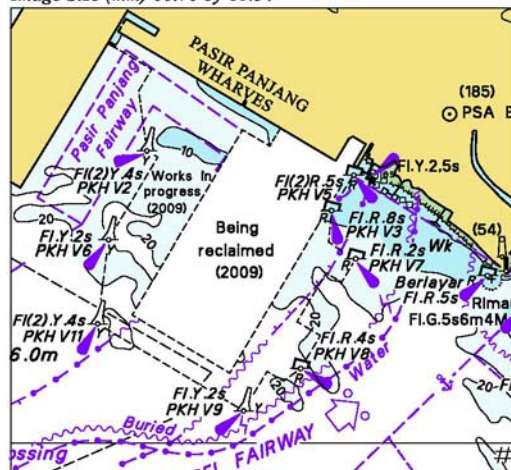
NOTICES TO MARINERS AND CHART CORRECTIONS

To accompany Notices to Mariners 110/09.
Image Size (mm) 66.70 by 61.34



Block for Chart GSP1

To accompany Notices to Mariners 110/09.
Image Size (mm) 66.70 by 61.34



Block for Chart SP1

II
TEMPORARY AND PRELIMINARY NOTICES

Nil

III NAVIGATIONAL INFORMATION

*(NM 114/2009) PORT MARINE NOTICES

The following PMNs have been shortlisted, as they would be of particular interest to mariners.

These notices can be accessed directly from MPA website:

http://www.mpa.gov.sg/sites/port_and_shipping/circulars_and_notices/port_marine_notices.page

PMN No.	Subject
155/2009	Construction of sea wall at Marina Wharf.
163/2009	Reclamation, installation works and construction of Crane Dance structure in Cruise Bay.
164/2009	Construction of Sentosa Broadwalk.

*(NM 115T/2009) DREDGING IN THE WEST BOUND LANE OF THE TRAFFIC SEPARATION SCHEME IN THE SINGAPORE STRAIT.

Purpose

Mariners navigating in the Singapore Strait are hereby informed that dredging operations will be carried out in the westbound lane of the Traffic Separation Scheme.

Date

With effect from Dec 2009 until Nov 2011 (24 months).

Duration

24 hours a day, seven days a week with effect from Dec 2009.

Working Area

Within an area bounded by the following coordinates from Singapore Port Limit and the area within the westbound lane of the Traffic Separation Scheme (please see chart attached):

WGS 84 Datum		
Points	Lat. (N)	Long. (E)
1	1°15.148'	103°58.017'
2	1°15.911'	103°59.926'
3	1°16.106'	104°01.019'
4	1°16.217'	104°01.019'
5	1°16.321'	104°01.630'
6	1°16.258'	104°01.656'
7	1°15.902'	104°00.796'
8	1°15.625'	104°00.126'
9	1°15.046'	103°58.675'
10	1°14.838'	103°58.145'

Vessels

Vessels involved in the operations will display the appropriate day and night signals and will stand by on VHF Ch 14 and 12 and shall follow any traffic information given by Vessel Traffic Information Service (VTIS).

Navigational Broadcast

Navigational warning broadcast will be promulgated by VTIS on VHF CH 09 and NAVTEX to inform vessels of the dredging operation. Mariners are to maintain a listening watch for the above safety information.

III NAVIGATIONAL INFORMATION

Caution

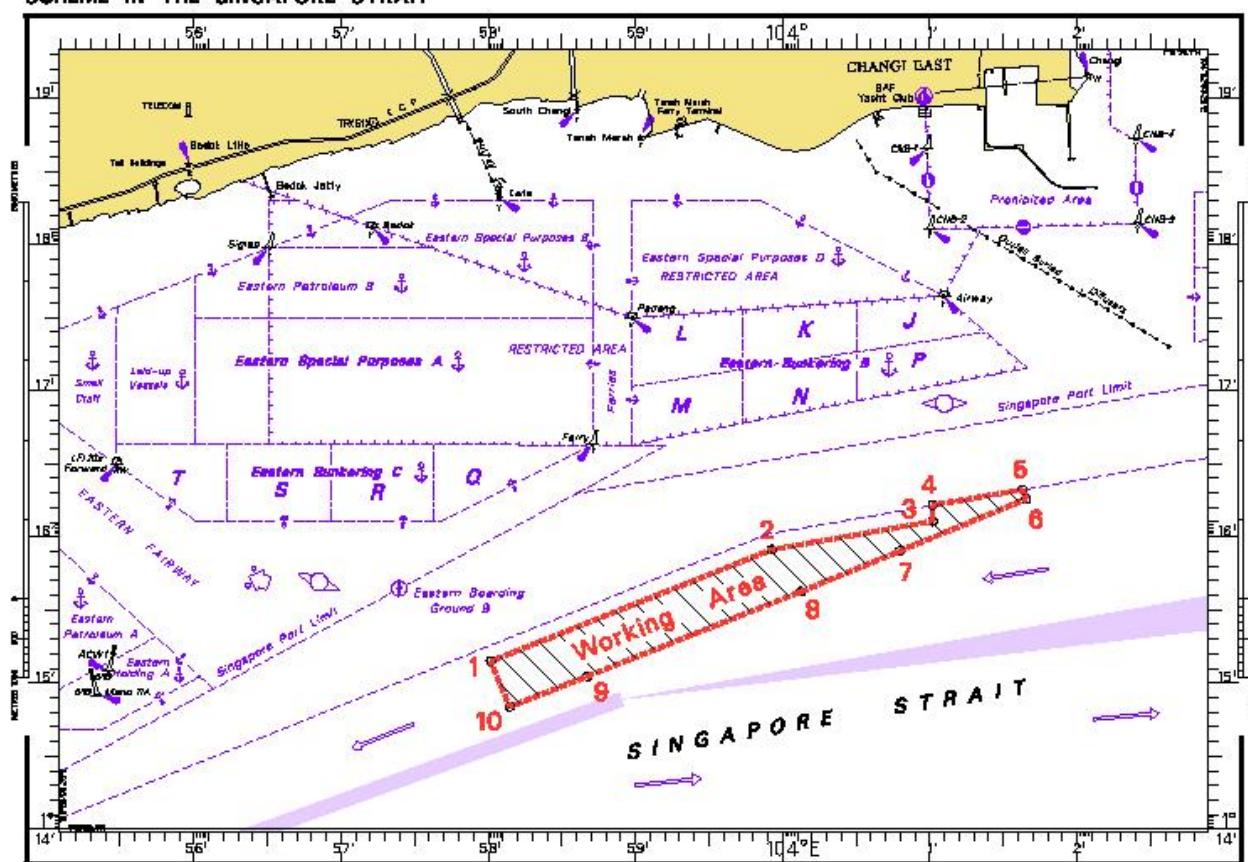
Mariners are advised to:

- (a) Navigate with caution and proceed at slow speed when approaching the area; and
- (b) Keep well clear of the working vessels.

Charts affected: SP1/GSP1, 202, 501, 502, 4037, 4041 & 4042

Source: PENTA-OCEAN/TOA CORPORATION/McCONNEL DOWELL JOINT VENTURE

DREDGING IN THE WEST BOUND LANE OF THE TRAFFIC SEPARATION SCHEME IN THE SINGAPORE STRAIT



*(NM 116/2009) SINGAPOREAN PRINT-ON-DEMAND (POD) CHARTS

Print-On-Demand (POD) Charts are the most up-to-date paper nautical charts printed for navigational use. These nautical charts are produced in accordance with the International Hydrographic Organisation (IHO) charting specifications. These official nautical charts are continually updated to the latest Notices to Mariners before they are printed and sold to users.

These POD Charts include SP1/GSP1, 200, 201, 202, 500, 501, 502, 503.

III NAVIGATIONAL INFORMATION

BENEFITS TO OUR CUSTOMERS

Convenience

Customers need not make numerous hand corrections to the nautical charts before use. In addition the updated POD Charts are more accurate and reliable than offset printed charts with hand corrections.

Clarity

Clarity in the presentation of updated information as compared to lithographic printed charts, where in some cases there are several overlapping corrections over existing information.

Coverage

The POD Charts cover the Malacca and Singapore Straits, from One Fathom Bank to Horsburgh Lighthouse.

III
AMENDMENTS TO PUBLICATIONS

Nil

IV
REPRINT OF RADIO NAVIGATIONAL WARNINGS

TT173

VSLs IN EAST JOHOR STRAIT ARE ADVISED TO NAVIGATE WITH CAUTION WHEN NEAR THE PROJECT AREAS OFF PU.TEKONG, PU.SERANGOON, CHANGI AND MALANG PAPAN AS SHALLOW WATER AREAS EXIST. VSLs ARE ADVISED TO KEEP LOOKOUT FOR TUGS AND BARGES NAVIGATING NEAR THE PROJECT AREAS AND PASSENGER FERRIES CROSSING BETWEEN CHANGI AND PULAU TEKONG AND VICINITY OF PASIR GUDANG.

TT611

A SHIP REPORTED LOSING HER PORT ANCHOR AND 12 SHACKLES OF ANCHOR CHAIN, IN APPROX POSN 01°11.55'N 103°52.52'E, OFF BATU BERHENTI BEACON.

TT619

DREDGER QUEEN OF PENTA OCEAN IS CONDUCTING DREDGING OPERATIONS IN POSITIONS BOUNDED BY COORDINATES:

01°15.827' N 103°57.737' E

01°14.865' N 103°58.134' E

01°13.298' N 103°54.401' E

01°13.884' N 103°54.131' E

VESSELS ARE ADVISED TO PROCEED AT SAFE SPEED AND TO GIVE A WIDE BERTH.

TT753

A SMALL WOODEN CARGO BOAT 10M IN LENGTH SUNK AT 01°15.73'N 103°32.1'E.

TT811

VISIBILITY IN THE SINGAPORE STRAIT AND PORT WATERS IS REDUCED BY HAZE. ALL VSLs ARE ADVISED TO NAVIGATE WITH CAUTION.

TT838

RACON DELTA Q(6)FL.15SECS AT POSN 01°03.59'N 103°38.86'E IS UNLIT.

ISSUED BY SINGAPORE PORT OPERATIONS CONTROL CENTRE
(as at 22th November 2009)

V
REPRINT OF ADMIRALTY NOTICES TO MARINERS
FOR DUAL BADGED CHARTS

These notices can be accessed directly from UKHO Website:

<http://www.ukho.gov.uk/ProductsandServices/MaritimeSafety/Pages/NMPublic.aspx>

6003* SINGAPORE – East Jurong Channel and Johor Strait – Pulau Ular – Sakra Basin – Serangoon Harbour - Dolphin. Jetty. Berth. Dredged depths. Light-beacons. Pontoon.

Light List Vol. F, 2009/10, 1688.6, 1744.2

Source: Maritime and Port Authority of Singapore

Chart 4032 [*previous update 4211/09*] WGS84 DATUM


Insert	 Dn	1° 16'.010N., 103° 42'.430E.
	the accompanying block, showing a new jetty, berth, dredged area and amendments to depths, light-beacon and pontoon, centred on:	1° 14'.305N., 103° 45'.410E.
Amend	dredged depth to, <i>5.0m (2009)</i> , centred on:	1° 16'.043N., 103° 42'.378E.

Chart 4040 [*previous update 5330/09*] WGS84 DATUM

Delete	 Q.4m2M Ular Reef	1° 14'.22N., 103° 45'.43E.
--------	--	----------------------------

Chart 4044 [*previous update New Edition 23/07/2009*] WGS84 DATUM

Insert	 Fl.Y.2s2m1M	1° 22'.97N., 103° 57'.63E.
--------	--	----------------------------

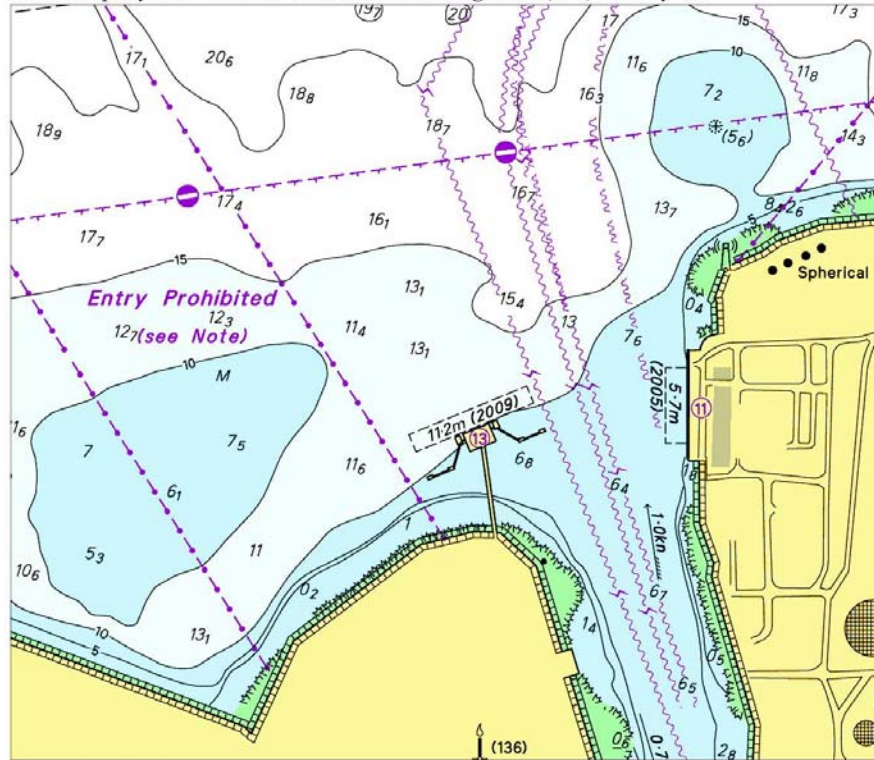
Chart 4044 (plan A, Serangoon Harbour) [*previous update New Edition 23/07/2009*] WGS84 DATUM

Insert	 Fl.Y.2s2m1M PUB-TMWTP	1° 22'.971N., 103° 57'.629E.
--------	--	------------------------------

Updated to Admiralty Notices to Mariners Edition No. 48 of 2009 dated 26th November 2009.

V
REPRINT OF ADMIRALTY NOTICES TO MARINERS
FOR DUAL BADGED CHARTS

To accompany Notice to Mariners 6003/09. Image Size (mm) 99.9 by 115



SINGAPORE ELECTRONIC NAVIGATIONAL CHARTS (ENC) DISTRIBUTORS
Please approach any of the appointed distributors to purchase the Singapore ENC.

DISTRIBUTOR	ADDRESS	TELEPHONE/FAX NO./EMAIL/WEBSITE
DPM (Singapore) Pte Ltd	1 Maritime Square, #09-72 HarbourFront Centre, Singapore 099253	Tel. No.: +65 6270 4060 Fax No.: +65 6276 3858 Email: sales@dpmsingapore.com.sg Website: http://www.dpmsingapore.com.sg
Kelvin Hughes(S) Pte Ltd	8 Pandan Avenue #02-00, Singapore 609384	Tel. No.: +65 6545 9880 ext.24 Fax No.: +65 6545 8892 Email: hamzah.akhbar@khsing.com Website: http://www.kelvinhughes.co.uk
Maritime Information Systems (MARIS)	52, Telok Blangah Road #01-06, Telok Blangah Centre, Singapore 058809	Tel. No.: +65 6276 1472 Fax No.: +65 6276 1473 Email: support@maris.sg Website: http://www.maris.no
Maritime Information System AS (MARIS)	Danholmen 25, 3128 Notteroy, Norway	Tel. No.: +47 33 30 42 50 Fax No.: +47 33 30 42 51 Email: roar.moe@maris.no Website: http://www.maris.no
Motion Smith	15 Jalan Kilang Barat #08-01/05 Frontech Centre Singapore 159357	Tel. No.: +65 6220 5098 Fax No.: +65 6225 4902 Email: sales@motsmith.com Website: http://www.motsmith.com
Transas Marine Pacific Pte Ltd	750C Chai Chee Road, #04-07, Technopark@Chai Chee, Singapore 469003	Tel. No.: +65 6443 3061 Fax No.: +65 6443 3025 Email: dominic@transas.com.sg Website: http://www.transas.com.sg
Vector Services Pte Ltd	15 West Coast Highway, #02-14A Pasir Panjang Building Singapore 117861	Tel. No.: +65 6777 3602 Fax No.: +65 6777 9203 Email: kwchoy@pacific.net.sg
Marine Press of Canada	640 Rue St-Paul Ouest, Suite 300 Montreal (QC) Canada, H3C1L9	Tel. No.: (514) 866 8342 Fax No.: (514) 866 9050 Email : sales@marinepress.com Website: http://www.marinepress.com
HanseNautic GmbH Bade & Hornig, Eckardt & Messtorff	Herrengarten 31 D-20459 Hamburg, Germany	Tel. No.: +49 40 374 811-32 Fax No.: +49 40 366 400 Email: wilde@hansenautic.de Website : http://www.HanseNautic.com
ChartWorld GmbH	Ruhrstrasse 90, D-22761 Hamburg, Germany	Tel. No.: +49 40 853 58 6940 Fax No.: +49 40 853 58 6949 Email: sales@chartworld.com Website : http://www.sevencs.com
Japan Hydrographic Association Electronic Charts Division	Daiichi Sogo Bldg, 6F 1-6-6, Hanedakuko, Ota-ku, Tokyo 144-0041, Japan	Tel. No.: +81 3 5708 7093 Fax No.: +81 3 5708 7094 Email: enc-support@jha.jp Website: http://www.jha.jp

SINGAPORE ELECTRONIC NAVIGATIONAL CHARTS (ENC) DISTRIBUTORS
Please approach any of the appointed distributors to purchase the Singapore ENC.

DISTRIBUTOR	ADDRESS	TELEPHONE/FAX NO./EMAIL/WEBSITE
E_MLX Co. Ltd	Ssangyong Research No.2 Lab Sinseong-Dong 100 Yusong-Gu, Daejeon 305-804, Korea (ROK)	Tel. No.: +82 42 865 1893 Fax No.: +82 42 865 1884 Email: Jester-kim@emlx.co.kr
Korean Ocean Development Co. Ltd	2ND Fl, Dongbang Bldg, 25-4, 4 Ga Jungang-Dong, Jung-Gu, Busan, South Korea	Tel. No.: +82 514 66 0760 Fax No.: +82 514 65 9345 Email: sales@chartkorea.com Website: http://www.chartkorea.com
Jeppesen Norway A/S	P.O Box 212 , N-4379 Egersund, Norway	Tel No.: +47 514 64 700 Fax No: +47 514 64 701 Email: enc@c-map.no Website : http://www.c-map.no
PRIMAR STAVANGER	Lervigsveien 36, P.O Box 60, N-4001 Stavanger, Norway	Tel. No.: +47 51 93 9500 Fax No.: +47 51 93 9501 Email: sales@primar.org Website : http://www.primar-stavanger.org
United Kingdom Hydrographic Office	Admiralty Way, Taunton, Somerset TA1 2DN United Kingdom	Tel. No.: +44 (0)1823 337900 Fax No.: +44 (0)1823 284077 Emails: vargroup@ukho.gov.uk & christine.trickett@ukho.gov.uk Website: http://www.ukho.gov.uk

Agents for the Maritime and Port Authority of Singapore Nautical Charts and Publications

Agent's Name : **DPM (Singapore) Pte Ltd**
Address : 1 Maritime Square #09-72, HarbourFront Centre,
Singapore 099253
Telephone : (65) 6270 4060
Fax No. : (65) 6276 3858
E-mail : sales@dpmsingapore.com.sg
Internet Web Site : <http://www.dpmsingapore.com.sg>

Agent's Name : **E.W. Liner Charts & Publications Pte Ltd**
Address : 102F, Pasir Panjang Road, #08-01, Citilink Warehouse Complex,
Singapore 118530
Telephone : (65) 6323 0773
Fax No. : (65) 6323 0775
E-mail : ewliner@singnet.com.sg
Internet Web Site : <http://www.ewliner.com>

Agent's Name : **Motion Smith**
Address : 15 Jalan Kilang Barat
#08-01/05 Frontech Centre,
Singapore 159357
Telephone : (65) 6220 5098
: (After office hours: 8163 9993)
Fax No. : (65) 6225 4902
E-mail : sales@motsmith.com
Internet Web Site : <http://www.motsmith.com>

HYDROGRAPHIC NOTE - Instructions

1. Mariners are requested to notify the Chief Hydrographer, Maritime and Port Authority of Singapore, when new or suspected dangers to navigation are discovered, changes are observed in aids to navigation or where corrections to nautical publications may be necessary. Reports, which cannot be confirmed or are lacking in certain details should not be withheld.
2. Any ambiguities of time, positioning and depth should be stressed and any firm expectation of being able to check the information provided on a following voyage should be mentioned.
3. Mariners using satellite position fixing systems, eg. GPS, should provide details of equipment and datum used (where applicable). Where bearings (true or magnetic) are taken visually or by radar to fix a position, it should include more than two objects in order to provide a check on its accuracy. A position may also be defined by bearing and distance from a conspicuous object eg. beacon, lighthouse etc.
4. The note should include a tracing or a digital image of the chart used and the details should be clearly marked.
5. Echo sounders frequently register greater depths than the advertised maximum depth for the equipment, eg. a trace appearing at 50 metres may be in fact be 550 metres or even 1050 metres for equipment whose maximum depth is 500 metres. Erroneous depths caused by 2nd transmission error can usually be recognised by the following:
 - (a) the tracing being weaker than normal for the depth registered,
 - (b) the trace appearing to pass through the transmission line,
 - (c) the feathery nature of the trace.
6. An acknowledgement of receipt will be sent. When a Notice to Mariners is issued, the sender's vessel or name is quoted as the source unless the same information is also received in foreign Notices to Mariners.
7. Reports of shoals, uncharted dangers and defects in aids to navigation may also be made to the appropriate Singapore Port Operations Control Centre on VHF Channels 10, 12, 14, 68 or 73.

HYDROGRAPHIC NOTE

To:

Chief Hydrographer
Hydrographic Department
Maritime and Port Authority of Singapore
460 Alexandra Road PSA Building #20-00
Singapore 119963

Tel : (65) 6375 1227
Fax : (65) 6278 7646
Email : hydrographic@mpa.gov.sg

Sender's Contact Details :

Date :

Name of Vessel :

Address of Sender :

Tel : Fax :

Email :

Nature of Observation :

General Location :

Subject :

Position : Lat. Long.

Charts Used :

Date & Time of Observation :

Details :

.....

.....

Attachment :

Equipment Used :

Type of Position Fixing : GPS / DGPS Others :

Type of Echo Sounder :

Name and Signature :

Ship's/Company's stamp :