



SINGAPOREAN NOTICES TO MARINERS

| SECTION | CONTENT | Page |
|---------|---|------|
| I | Index of Charts & Publications | 229 |
| II | New Publications | 232 |
| | Notices to Mariners and Chart Corrections | 234 |
| | Temporary and Preliminary Notices | 235 |
| III | Navigational Information | 236 |
| | Amendments to Publications | 237 |
| IV | Reprint of Radio Navigational Warnings | 238 |
| V | Reprint of Admiralty Notices to Mariners for Dual Badged Charts | 239 |

The monthly Notices to Mariners contain corrective information affecting charts published by the Hydrographic Department, Maritime and Port Authority of Singapore. The information contained in these Notices should be updated on the charts affected. Notices under Section II apply only to the particular Singaporean Chart(s) indicated.

Mariners are requested to notify the Chief Hydrographer, Maritime and Port Authority of Singapore, immediately on the discovery of new dangers or suspected dangers to navigation and of changes or defects in aids to navigation. See Hydrographic Note on back page.

The monthly Singaporean Notices to Mariners can be accessed directly from the MPA website:
[http://www.mpa.gov.sg/sites/port_and_shipping/circulars_and_notices/singapore_notices_to_mariners\(ntm\).page](http://www.mpa.gov.sg/sites/port_and_shipping/circulars_and_notices/singapore_notices_to_mariners(ntm).page)

This service is offered free of charge.

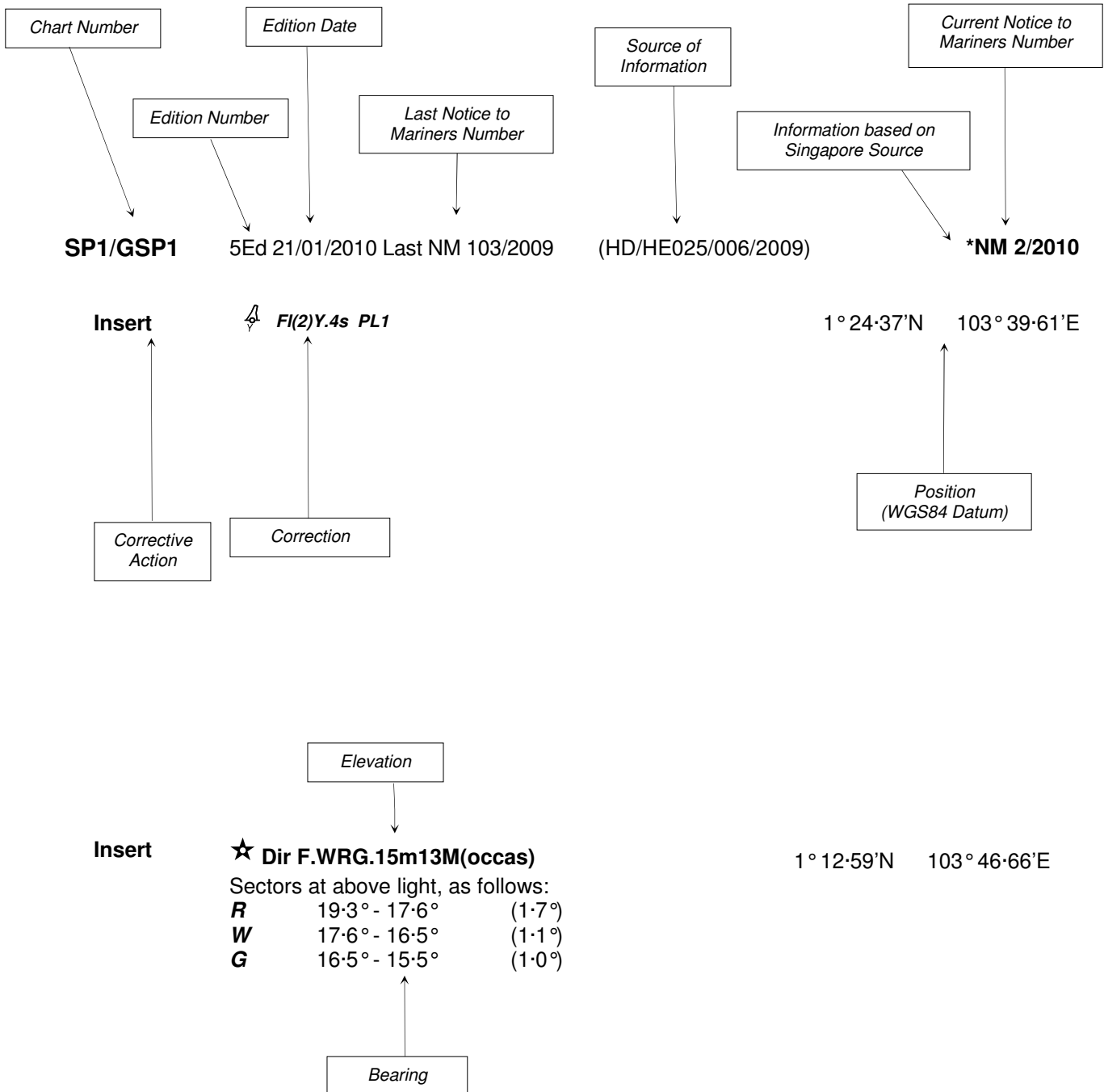
The Chief Hydrographer of
 Maritime and Port Authority of Singapore
 wishes all users of Singaporean and Dual Badged Charts

A MERRY CHRISTMAS

Hydrographic Department
 Maritime and Port Authority of Singapore
 460 Alexandra Road
 PSA Building #20-00
 Singapore 119963
 Tel: (65) 6375 1227
 Fax: (65) 6278 7646

EXPLANATION OF FORMAT

The elements of a typical chart correction are explained below.



Notes:

- a) Notice to Mariners number followed by:
T indicates a Temporary Notice (eg. ***NM 1T/2010**).
P indicates a Preliminary Notice (eg. ***NM 3P/2010**).
- b) Bearings are true reckoned clockwise from 000° to 359° ; those relating to lights are from seaward.
- c) Heights and elevations are above Mean High Water Springs.

I
INDEX OF CHARTS AND PUBLICATIONS

INDEX OF AFFECTED CHARTS

| DESCRIPTION | NOTICE NO. | PAGE NO. |
|--|--------------------|----------|
| Index of Singaporean Charts | - | 229 |
| Index of Dual Badged Charts | - | 230 |
| Index of Singapore Electronic Navigational Chart (ENC) | - | 231 |
| New Publication "SINGAPORE TIDE TABLES YEAR 2011" | - | 232 |
| New Publication "CHARTS FOR SMALL CRAFT" | - | 233 |
| Singaporean Chart 201 | 104, 105 | 234 |
| Singaporean Chart 202 | 105 | 234 |
| Singaporean Chart 500 | 105 | 234 |
| Singaporean Chart 501 | 105 | 234 |
| Temporary and Preliminary Notices | *106P, *107T, 108T | 235 |
| Port Marine Notices | *109 | 236 |
| Singaporean Print-On-Demand (POD) Charts | *110 | 236 |
| Amendments to Publications | *111 | 237 |
| Reprint of Radio Navigational Warnings | - | 238 |
| Reprint of Admiralty Notices to Mariners for Dual Badged Charts | - | 239 |
| Singapore Electronic Navigational Chart (ENC) Distributors | - | 243 |
| Agents for the Maritime and Port Authority of Singapore Nautical Charts and Publications | - | 244 |

*Denotes information are based on Singaporean source.

I
INDEX OF CHARTS AND PUBLICATIONS

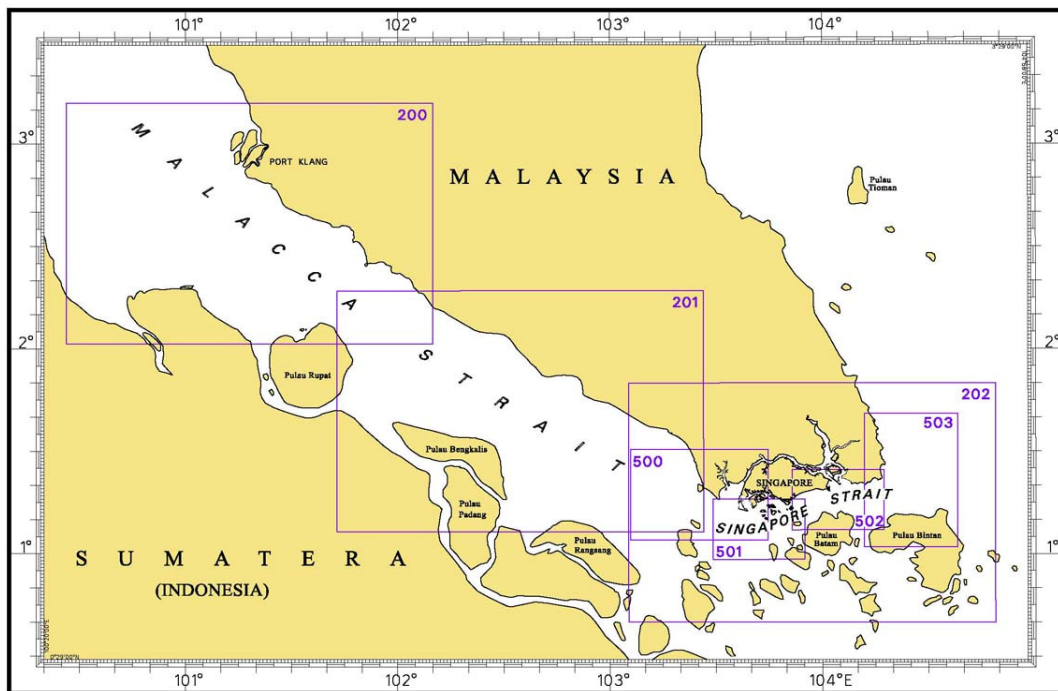
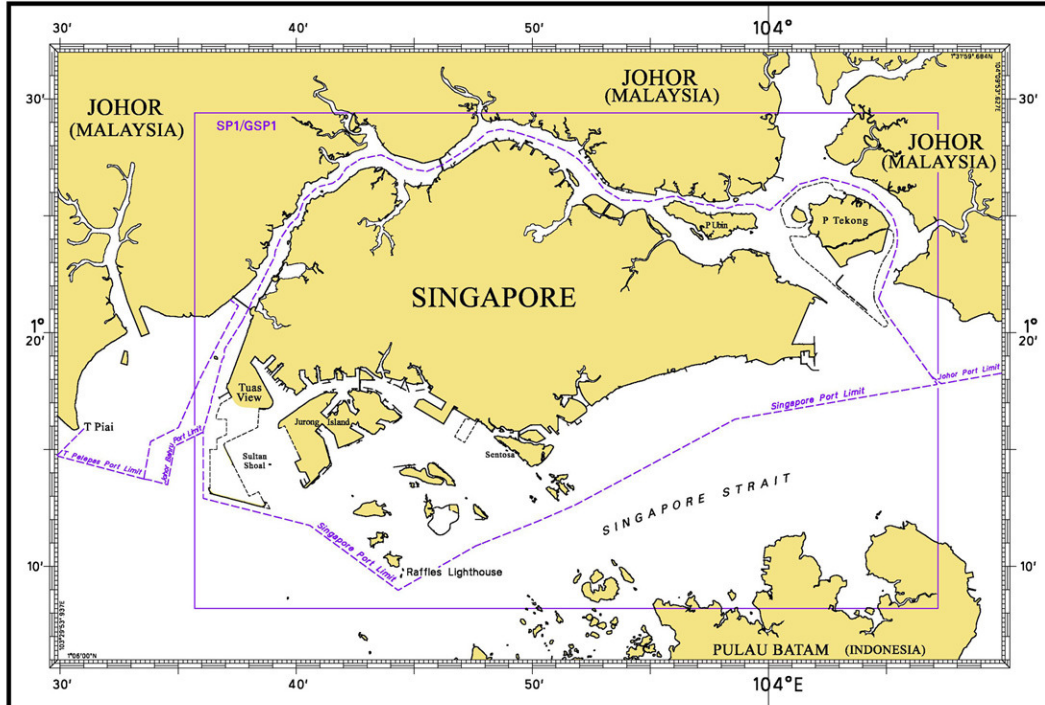
INDEX OF NOTICES

| NOTICE NO. | DESCRIPTION | PAGE NO. |
|-----------------------|--|----------|
| - | Index of Singaporean Charts | 229 |
| - | Index of Dual Badged Charts | 230 |
| - | Index of Singapore Electronic Navigational Chart (ENC) | 231 |
| - | New Publication "SINGAPORE TIDE TABLES YEAR 2011" | 232 |
| - | New Publication "CHARTS FOR SMALL CRAFT" | 233 |
| 104 | Singaporean Chart 201 | 234 |
| 105 | Singaporean Chart 201, 202, 500, 501 | 234 |
| *106P, *107T, 108T | Temporary and Preliminary Notices | 235 |
| *109 | Port Marine Notices | 236 |
| *110 | Singaporean Print-On-Demand (POD) Charts | 236 |
| *111 | Amendments to Publications | 237 |
| - | Reprint of Radio Navigational Warnings | 238 |
| - | Reprint of Admiralty Notices to Mariners for Dual Badged Charts | 239 |
| - | Singapore Electronic Navigational Chart (ENC) Distributors | 243 |
| - | Agents for the Maritime and Port Authority of Singapore Nautical Charts and Publications | 244 |

* Denotes information are based on Singaporean source.

I INDEX OF CHARTS AND PUBLICATIONS

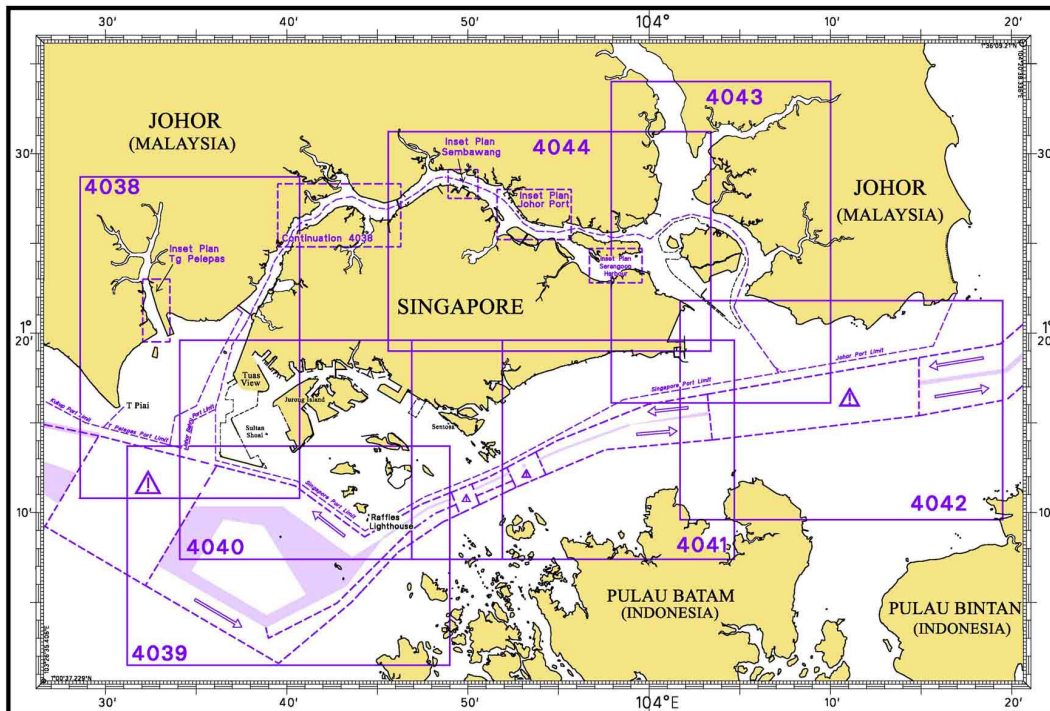
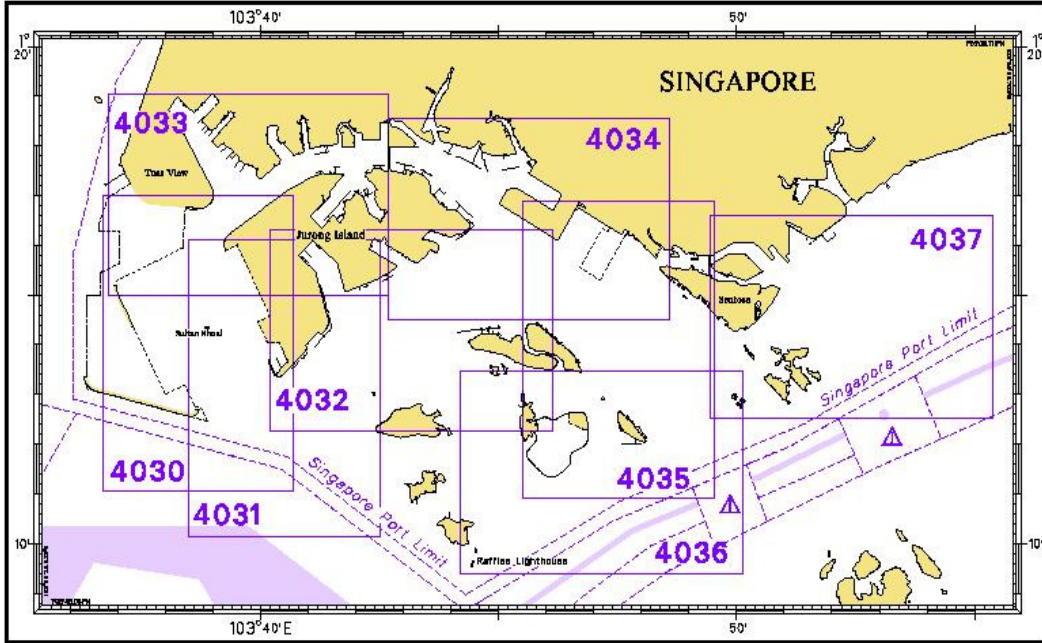
INDEX OF SINGAPOREAN CHARTS



Notes:
 Updated SINGAPOREAN Charts are available through our Print-On-Demand (POD) Chart Service. For more information, refer to Section III – Navigational Information and these charts can be purchased from our authorised Chart Agents:
 DPM (Singapore) Pte Ltd, E.W. Liner Charts & Publications Pte Ltd and Motion Smith.

I
INDEX OF CHARTS AND PUBLICATIONS

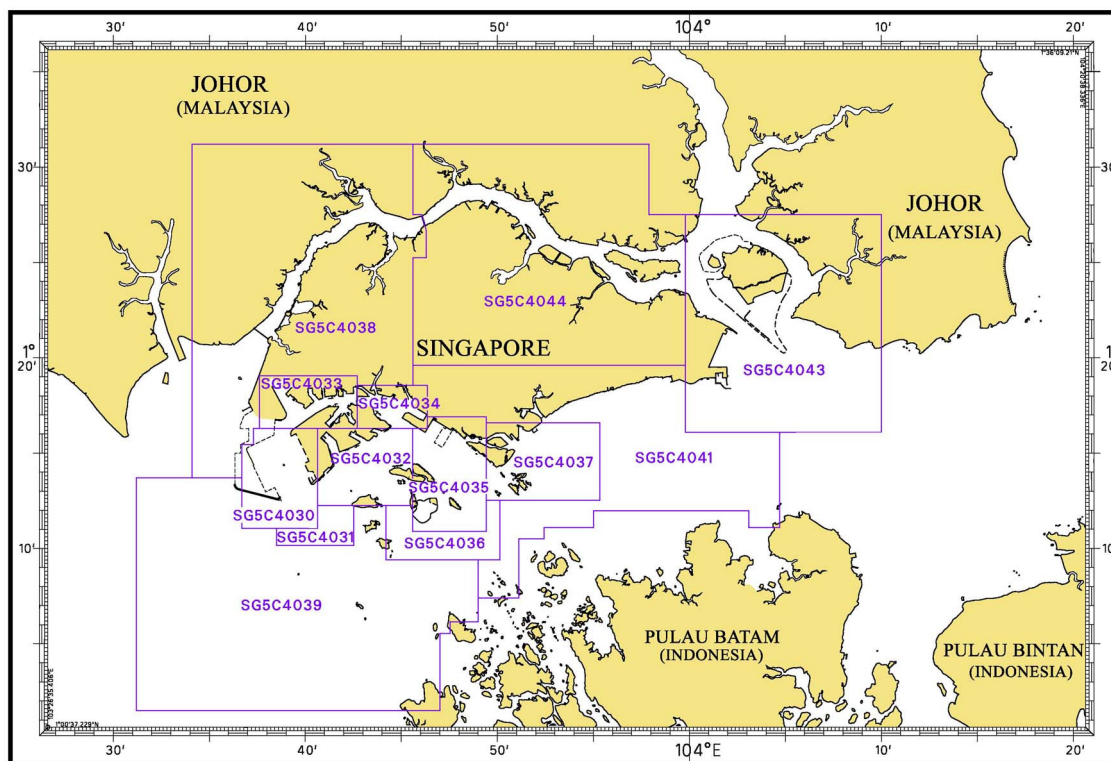
INDEX OF DUAL BADGED CHARTS



I INDEX OF CHARTS AND PUBLICATIONS

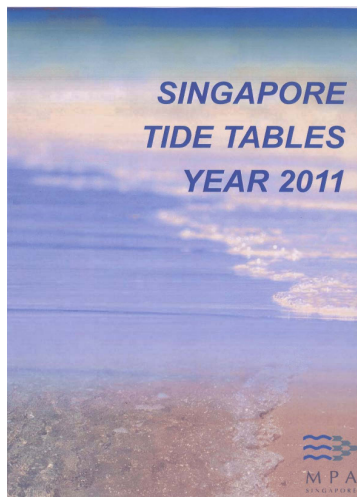
INDEX OF SINGAPORE ELECTRONIC NAVIGATIONAL CHART (ENC)

INDEX OF SINGAPORE ENC



| ENC Name | ENC Title | Latitude | Longitude |
|----------|---|--------------------------|------------------------------|
| SG5C4030 | West Jurong Anchorages and Temasek Fairway | 1°11.050'N 1°16.300'N | 103°36.700'E 103°40.640'E |
| SG5C4031 | Western Approaches to Jurong Island | 1°10.150'N 1°12.250'N | 103°38.500'E 103°42.530'E |
| SG5C4032 | Sinki Fairway | 1°12.250'N 1°16.300'N | 103°40.640'E 103°45.580'E |
| SG5C4033 | Tuas Bay, West Jurong Channel and Pesek Basin | 1°16.300'N 1°19.050'N | 103°37.600'E 103°42.700'E |
| SG5C4034 | East Jurong Channel, Pasir Panjang Terminal and West Keppel Fairway | 1°16.300'N 1°18.550'N | 103°42.700'E 103°46.356'E |
| SG5C4035 | Western Anchorages, Jong Fairway and Cruise Bay | 1°10.900'N 1°16.900'N | 103°45.580'E 103°49.425'E |
| SG5C4036 | Raffles Lighthouse to The Sisters | 1°09.400'N 1°12.520'N | 103°44.200'E 103°50.130'E |
| SG5C4037 | Keppel Harbour, Tanjong Pagar Terminal and Approaches | 1°12.520'N 1°16.590'N | 103°49.425'E 103°55.340'E |
| SG5C4038 | Johor Strait – Western Part | 1°13.700'N 1°31.200'N | 103°34.100'E 103°46.300'E |
| SG5C4039 | Western Approaches to Main Strait | 1°01.500'N 1°13.700'N | 103°31.200'E 103°49.000'E |
| SG5C4041 | Pulau Sebarok to Changi | 1°07.400'N 1°19.600'N | 103°45.600'E 104°04.700'E |
| SG5C4043 | Kuala Johor and Sungai Johor | 1°16.100'N 1°27.500'N | 103°59.800'E 104°10.000'E |
| SG5C4044 | Johor Strait – Eastern Part | 1°19.600'N 1°31.200'N | 103°45.600'E 103°59.800'E |

II NEW PUBLICATIONS



SINGAPORE TIDE TABLES YEAR 2011

Summary of Publication

- (a) This 239-page book contains Tidal Height and Tidal Stream Predictions covering stations in Singapore Port waters and selected stations along the Malacca and Singapore Straits.

The predictions consist of 5 main segments to facilitate easy reference:

- High and Low Water Predictions
 - Hourly Tidal Height Predictions
 - Hourly Tidal Stream Predictions
 - Maximum and Slack Tidal Stream Predictions
 - Malacca Strait – High and Low Water Predictions
- (b) The presentation of the predictions is enhanced with colour codes so as to differentiate the various states of tidal heights, eg falling or rising tide and tidal stream directions. Moon phases, eg full and new moon, are also included in each calendar month to complement the prediction values.
- (c) The tidal heights are given in metres above Chart Datum (CD). The CD is the datum of soundings shown on the Singaporean Charts and Dual Badged Charts covering the area. A table showing the various tidal levels eg. Mean High Water Springs, Mean Low Water Springs etc, at various stations with reference to CD is also included in this publication.

To Whom Will It Be Useful?

Mariners, shipping community, port users and other interested users.

Frequency of Publication

Annually.

Cost of Publication

To be advised by Chart Agents.

Order Enquires:

This publication is available from the following Chart Agents:

- 1) DPM (Singapore) Pte Ltd
- 2) E.W. Liner Charts & Publications Pte Ltd
- 3) Motion Smith





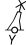
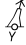
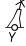
(Please refer to Page 244 for details.)

II NEW PUBLICATIONS

NEW EDITION CHART TO BE PUBLISHED ON 20TH JANUARY 2011

| | | |
|----------------|---|--|
| Chart Number | : | CHARTS FOR SMALL CRAFT |
| Title | : | Singapore Strait and Adjacent Waterways – 2011/2012 Edition |
| Date Published | : | 20 th January 2011 |
| Size of chart | : | 600 x 400 mm |
| Remarks | : | <p>The publication contains 19 Small Craft Charts and related nautical information bound into an atlas measuring 600 x 400 mm. The pages are laminated to prevent damage from seawater.</p> <p>The symbols, abbreviations and term depicted on these charts are consistent with the International Hydrographic Organization Chart Standards and Specifications.</p> <p>Symbols for the locations of pleasure craft facilities and areas for sea sport activities such as board sailing, dinghy sailing, keelboat sailing, power-boating and water-skiing are also included and highlighted in red.</p> <p>Chart of the same publication Edition 2009/2010 published on 15th January 2009 would be superseded.</p> |

II NOTICES TO MARINERS AND CHART CORRECTIONS

| | | | |
|---------------|--|---|-----------------------|
| 201 | 4Ed 7/10/10 New Edition | (Royal Malaysian Navy Notice to Mariners No. 9/142/2010) | NM 104/2010 |
| Amend | FI(2)10s28m16M for FI(2)10s16m28M | | 1°35'47"N 102°46'70"E |
| | | (Admiralty Notice 46/5509/2010) | NM 105/2010 |
| Delete |  <i>Fl. Y. 3s</i> | | 1°08'34"N 103°25'20"E |
| | | | |
| 202 | 6Ed 24/09/09 Last NM 82/2010 | (Admiralty Notice 46/5509/2010) | NM 105/2010 |
| Delete |  <i>Fl. Y. 3s</i> | | 1°08'34"N 103°25'20"E |
| | | | 1°03'03"N 103°32'05"E |
| |  <i>Fl. Y. 6s</i> | | 1°06'01"N 103°30'00"E |
| | | | |
| 500 | 6Ed 7/10/10 New Edition | (Admiralty Notice 46/5509/2010) | NM 105/2010 |
| Delete |  <i>Fl. Y. 3s</i> | | 1°08'34"N 103°25'20"E |
| |  <i>Fl. Y. 6s5M</i> | | 1°06'01"N 103°30'00"E |
| | | | |
| 501 | 5Ed 24/09/09 Last NM 98/2010 | (Admiralty Notice 46/5509/2010) | NM 105/2010 |
| Delete |  <i>Fl. Y. 3s</i> | | 1°03'03"N 103°32'05"E |
| |  <i>Fl. Y. 6s</i> | | 1°06'01"N 103°30'00"E |
| | | | |

II TEMPORARY AND PRELIMINARY NOTICES

*(NM 106P/2010) INSTALLATION OF NEW BANYAN BEACON

- Remark :**
1. A new buoyant beacon will be installed at approximate position 1°13'346"N 103°41'585"E. The isolated danger beacon will have a double sphere topmark on a black red black tubular tower pivoted at base. The light character will be Fl(2)W10s. It will be fitted with Radar Reflector and Automatic Identification System (AIS).
 2. The isolated danger buoy (1°13.331'N 103°41.614'E) will be withdrawn on the same day.

Date : December 2010.

Charts affected : SP1/GSP1, 4031, 4032, 4039 and 4040

Source : MPA Hydrographic Department.

*(NM 107T/2010) REPAIRS AND MAINTENANCE OF OUTER SHOAL BEACON

- Remark :**
1. Repairs and maintenance operations for Outer Shoal Beacon are due to be completed and the beacon will be restored at its original position 1°15.019'N 103°51.811'E on 1st December 2010. The light character will remain unchanged and will be fitted with Automatic Identification System (AIS).
 2. The temporary green conical buoy with light character Fl.G.5s at position 1°15.046'N 103°51.811'E will be withdrawn on the same day.
 3. Singapore Notice to Mariners No. 11/99T/2010 is cancelled.

Date : With effect from 1st December 2010.

Charts affected : SP1/GSP1, 501, 502, 4037, 4040 and 4041.

Source : MPA Hydrographic Department.

(NM 108T/2010) DREDGING OPERATION WEST PORT, PULAU INDAH, PORT KLANG

Remark : Mariners are advised that Clamshell Dredging Sdn. Bhd. is conducting dredging operations on West Port, Pulau Indah, Port Klang.

Date : Duration from 15th October 2010 to 15th December 2010.

1. Dredging operations are in progress within the working area bounded by the following positions (WGS84).

| | |
|-----------|-------------|
| 2°56-55'N | 101°07-27'E |
| 2°54-00'N | 101°10-08'E |
| 2°52-38'N | 101°08-26'E |
| 2°54-95'N | 101°05-83'E |

2. Charts affected : 200

3. Mariners are advised to keep a lookout and give a wide berth.

Source : Peninsular Malaysia, Marine Department Notice to Mariners No. 83T/2010.

III NAVIGATIONAL INFORMATION

*(NM 109/2010) PORT MARINE NOTICES

The following PMNs have been shortlisted, as they would be of particular interest to mariners.

These notices can be accessed directly from MPA website:

http://www.mpa.gov.sg/sites/port_and_shipping/circulars_and_notices/port_marine_notices.page

| PMN No. | Subject |
|----------|--|
| 140/2010 | Reclamation of Jurong Island Phase 4. |
| 142/2010 | Construction of Storage Terminal / Jetty on Jurong Island. |
| 143/2010 | Construction of 15,000 DWT Coal/Biomass Handling Jetty on Jurong Island. |
| 145/2010 | Replacement of Banyan Buoy off Sinki Fairway. |
| 148/2010 | Construction of SLNG Terminal at Jurong Island. |
| 149/2010 | Construction of sea wall at Marina Wharf. |
| 150/2010 | Installation of Outer Shoal Beacon off East Keppel Fairway. |

*(NM 110/2010) SINGAPOREAN PRINT-ON-DEMAND (POD) CHARTS

Print-On-Demand (POD) Charts are the most up-to-date paper nautical charts printed for navigational use. These nautical charts are produced in accordance with the International Hydrographic Organisation (IHO) charting specifications. These official nautical charts are continually updated to the latest Notices to Mariners before they are printed and sold to users.

These POD Charts include SP1/GSP1, 200, 201, 202, 500, 501, 502 and 503.

BENEFITS TO OUR CUSTOMERS

Convenience

Customers need not make numerous hand corrections to the nautical charts before use. In addition the updated POD Charts are more accurate and reliable than offset printed charts with hand corrections.

Clarity

Clarity in the presentation of updated information as compared to lithographic printed charts, where in some cases there are several overlapping corrections over existing information.

Coverage

The POD Charts cover the Malacca and Singapore Straits, from One Fathom Bank to Horsburgh Lighthouse.

III
AMENDMENTS TO PUBLICATIONS

***(NM 111/2010) UPDATING OF PUBLICATION "SINGAPORE PORT INFORMATION 2010/2011"**

1. Page 148 – Item 16

WHARVES AND BERTHS

JURONG ISLAND (EXXONMOBIL ASIA PACIFIC PTE LTD) (1°16.8'N, 103°41.5'E)

Insert the following:

| Berth | Length of Berth | Depth Alongside (Year Surveyed) |
|------------------------------------|------------------------|--|
| Barge Wharf (Uploading) | 252m | 5.8m (2010) |

Source: HD/HY/E00103110

IV
REPRINT OF RADIO NAVIGATIONAL WARNINGS

TT173

VESSELS IN EAST JOHOR STRAIT ARE ADVISED TO NAVIGATE WITH CAUTION WHEN NEAR THE PROJECT AREAS OFF PULAU TEKONG, CHANGI AND MALANG PAPAN AS SHALLOW WATER AREAS EXIST. VESSELS ARE ADVISED TO KEEP LOOKOUT FOR TUGS AND BARGES NAVIGATING NEAR THE PROJECT AREAS AND PASSENGER FERRIES CROSSING BETWEEN CHANGI AND PULAU TEKONG AND VICINITY OF PASIR GUDANG.

TT619

DREDGER QUEEN OF PENTA OCEAN IS CONDUCTING DREDGING OPERATIONS IN POSITIONS BOUNDED BY COORDINATES:

01°15.827' N 103°57.737' E

01°14.865' N 103°58.134' E

01°13.298' N 103°54.401' E

01°13.884' N 103°54.131' E

VESSELS ARE ADVISED TO PROCEED AT SAFE SPEED AND TO GIVE A WIDE BERTH.

TT753

A SMALL WOODEN CARGO BOAT 10M IN LENGTH SUNK AT 01°15.73'N 103°32.10'E.

TT884

SALVAGE OPS UNDERWAY IN 01°13.40'N 103°57.75'E. ALL SHIPS ARE REQUESTED TO GIVE A WIDE BERTH OF AT LEAST 5 CABLES WHEN PASSING THE AREA.

TT886

SAFE WATER MARK LFL.10S(RW) MARKED THE ENTRANCE INTO DWR IS MISSING.

TT903

PHILLIP CHANNEL TAKONG ISOLATED DANGER BUOY FL(2)5SECS IN POSN 01°05.80'N 103°43.70'E REPORTED TO BE UNLIT.

TT908

DANGER TO NAVIGATION (AMENDED ON 071700Z)

2 TUGBOATS REPORTED SUNK IN POSN 01°19.63'N 104°19.28'E. ALL VESSELS ARE TO NAVIGATE WITH CAUTION.

SR154

THERE WAS A REPORT OF AN UNIDENTIFIED VESSEL SUNK SOUTHWEST OF HORSBURGH AT POSITION 01°16.12'N 104°21.50'E. VESSELS IN THE VICINITY ARE ADVISED TO KEEP A LOOKOUT AND REPORT SIGHTING TO SPOCC.

ISSUED BY SINGAPORE PORT OPERATIONS CONTROL CENTRE (as at 29th November 2010)

V
**REPRINT OF ADMIRALTY NOTICES TO MARINERS
 FOR DUAL BADGED CHARTS**

These notices can be accessed directly from UKHO Website:

<http://www.ukho.gov.uk/ProductsandServices/MaritimeSafety/Pages/NMPublic.aspx>

5508 SINGAPORE – Jurong Island – West Jurong Channel – Sakra Basin – Ayer Chawan Basin, East Jurong Channel, Sentosa North-eastwards, East Keppel Fairway, Eastern Fairway, Selat Phillip North-eastwards and Serangoon Harbour Eastwards – Light-beacon. Radar beacon. Buoyage. Legends. Maritime limit. Works. Depths. Rock.

Light List Vol. F, 2010/11, 1694.2

Source: Maritime and Port Authority of Singapore

Chart 4030 [*previous update 4767/10*] WGS84 DATUM

| | | |
|------|---|------------------------------|
| Move |  FI(R).2s SCM5 , from | 1° 16'·589N., 103° 39'·013E. |
| | to: | 1° 16'·529N., 103° 39'·015E. |

Chart 4032 [*previous update 4767/10*] WGS84 DATUM

| | | |
|-------|---|------------------------------|
| Amend | legend to, 5.9m (2010) , centred on: | 1° 16'·028N., 103° 42'·420E. |
|-------|---|------------------------------|

Chart 4033 [*previous update 4767/10*] WGS84 DATUM




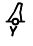

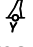
| | | |
|--------|--|---|
| Insert | maritime limit, pecked line, joining: | 1° 16'·965N., 103° 42'·150E. (shore) 1° 17'·008N., 103° 42'·240E. (shore) and 1° 17'·016N., 103° 42'·265E. (shore) 1° 17'·063N., 103° 42'·373E. (shore) 1° 16'·892N., 103° 42'·308E. |
| Move | legend, Works in progress (2010) , centred on:  FI(R).2s SCM5 , from | 1° 16'·589N., 103° 39'·013E. |
| | to: | 1° 16'·529N., 103° 39'·015E. |

Chart 4034 [*previous update New Edition 30/09/2010*] WGS84 DATUM

| | | | |
|--------|--|-----|---|
| Insert |  FI(2)Y.2s PKH V13 | (a) | 1° 16'·020N., 103° 47'·774E. |
| |  FI(2)Y.2s PKH V14 | (b) | 1° 15'·955N., 103° 47'·884E. |
| |  FI(2)Y.2s PKH V15 | (c) | 1° 15'·793N., 103° 47'·861E. |
| |  FI(2)Y.2s PKH V16 | (d) | 1° 15'·665N., 103° 47'·786E. |
| |  FI(2)Y.2s PKH V17 | (e) | 1° 15'·688N., 103° 47'·748E. |
| | maritime limit, pecked line, joining: | | (a) above (b) above (c) above (d) above (e) above |
| | legend, Works in progress (2010) , within: | | (a)-(e) above |
| Amend | legend to, 10.3m (2010) , centred on: | | 1° 17'·451N., 103° 44'·769E. |

V
**REPRINT OF ADMIRALTY NOTICES TO MARINERS
 FOR DUAL BADGED CHARTS**

5508 SINGAPORE – Jurong Island – West Jurong Channel – Sakra Basin – Ayer Chawan Basin, East Jurong Channel, Sentosa North-eastwards, East Keppel Fairway, Eastern Fairway, Selat Phillip North-eastwards and Serangoon Harbour Eastwards – Light-beacon. Radar beacon. Buoyage. Legends. Maritime limit. Works. Depths. Rock. (continued)

Chart 4035 [*previous update New Edition 30/09/2010*] WGS84 DATUM






| | | | |
|--------|--|-----|------------------------------|
| Insert |  FI(2)Y.2s PKH V13 | (a) | 1° 16'·020N., 103° 47'·774E. |
| |  FI(2)Y.2s PKH V14 | (b) | 1° 15'·955N., 103° 47'·884E. |
| |  FI(2)Y.2s PKH V15 | (c) | 1° 15'·793N., 103° 47'·861E. |
| |  FI(2)Y.2s PKH V16 | (d) | 1° 15'·665N., 103° 47'·786E. |
| |  FI(2)Y.2s PKH V17 | (e) | 1° 15'·688N., 103° 47'·748E. |
| | maritime limit, pecked line, joining: | | (a) above |
| | | | (b) above |
| | | | (c) above |
| | | | (d) above |
| | | | (e) above |
| | legend, Works in progress (2010) , within: | | (a)-(e) above |

Chart 4037 [*previous update 4767/10*] WGS84 DATUM

| | | | |
|--------|---|-----|------------------------------|
| Insert | the accompanying block, showing amendments to depths, centred on: | | 1° 13'·633N., 103° 52'·200E. |
| | depth 12₂ | (a) | 1° 16'·427N., 103° 54'·719E. |
| Delete | depth 12₇ , close SSW of: | | (a) above |

Chart 4038 [*previous update 4785/10*] WGS84 DATUM

| | | |
|------|--|----------------------------|
| Move |  FI.R.2s SCM5 , from | 1° 16'·59N., 103° 39'·01E. |
| | to: | 1° 16'·53N., 103° 39'·02E. |

Chart 4039 [*previous update 4182/10*] WGS84 DATUM



| | | |
|------------|--|----------------------------|
| Substitute |  Takong Q(6)+LFI.15s8m9M (collapsed) for | |
| |  Takong Q(6)+LFI.15s8m9M and associated radar beacon, Racon (TK)(3cm) | 1° 05'·90N., 103° 43'·24E. |

Chart 4040 [*previous update New Edition 05/08/2010*] WGS84 DATUM

| | | |
|--------|---------------------------------------|---------------------------------------|
| Insert | maritime limit, pecked line, joining: | 1° 16'·97N., 103° 42'·15E. (shore) |
| | | 1° 17'·01N., 103° 42'·24E. (shore) |
| | | and |
| | | 1° 17'·02N., 103° 42'·27E. (shore) |
| | | 1° 17'·06N., 103° 42'·37E. (shore) |
| | | and |

V
**REPRINT OF ADMIRALTY NOTICES TO MARINERS
 FOR DUAL BADGED CHARTS**

5508 SINGAPORE – Jurong Island – West Jurong Channel – Sakra Basin – Ayer Chawan Basin, East Jurong Channel, Sentosa North-eastwards, East Keppel Fairway, Eastern Fairway, Selat Phillip North-eastwards and Serangoon Harbour Eastwards – Light-beacon. Radar beacon. Buoyage. Legends. Maritime limit. Works. Depths. Rock. (continued)

Chart 4040 [*previous update New Edition 05/08/2010*] WGS84 DATUM. (continued)


| | | |
|------|---|--|
| | (a) | 1° 16'·02N., 103° 47'·77E. |
| | (b) | 1° 15'·96N., 103° 47'·88E. |
| | (c) | 1° 15'·79N., 103° 47'·86E. |
| | (d) | 1° 15'·67N., 103° 47'·79E. |
| | (e) | 1° 15'·69N., 103° 47'·75E. |
| | | 1° 16'·89N., 103° 42'·31E. |
| | | (a)-(e) above |
| | | legend, Works in progress (2010) , centred on: Legend, Works (2010) , within: |
| Move |  | Fl.R.2s SCM5 , from |
| | | to: |
| | | 1° 16'·59N., 103° 39'·01E. |
| | | 1° 16'·53N., 103° 39'·02E. |

Chart 4041 [*previous update 4767/10*] WGS84 DATUM

| | | | |
|--------|--|-----|---------------------------------------|
| Insert | maritime limit, pecked line, joining: | (a) | 1° 16'·02N., 103° 47'·77E. |
| | | (b) | 1° 15'·96N., 103° 47'·88E. |
| | | (c) | 1° 15'·79N., 103° 47'·86E. |
| | | (d) | 1° 15'·67N., 103° 47'·79E. |
| | | (e) | 1° 15'·69N., 103° 47'·75E. |
| | | | (a)-(e) above |
| | | | legend, Works (2010) , within: |
| | depth 12₂ | (f) | 1° 16'·43N., 103° 54'·72E. |
| | depth 20₃ | | 1° 13'·75N., 103° 52'·26E. |
| Delete | depth 12₇ , close SW of: | | (f) above |
| | depth 18₈ and associated 20m contour | | 1° 13'·68N., 103° 52'·31E. |

Chart 4043 [*previous update 4767/10*] WGS84 DATUM

| | | | |
|--------|-------------------|--|----------------------------|
| Insert | * dries 2m | | 1° 23'·41N., 103° 58'·36E. |
|--------|-------------------|--|----------------------------|

Chart 4044 [*previous update 4767/10*] WGS84 DATUM

| | | | |
|--------|-------------------|--|----------------------------|
| Insert | * dries 2m | | 1° 23'·41N., 103° 58'·36E. |
|--------|-------------------|--|----------------------------|

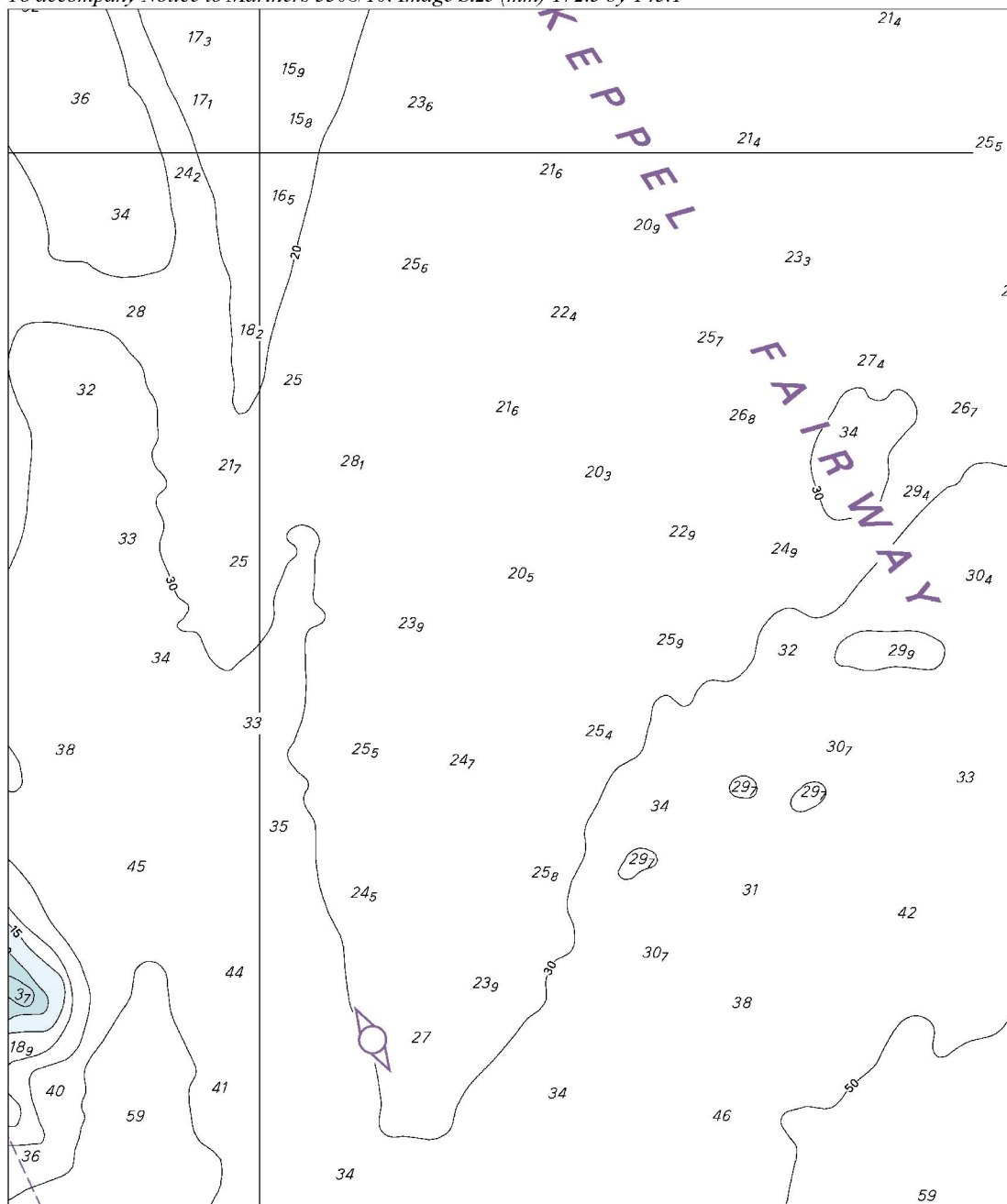
Chart 4044 (plan A, Serangoon Harbour) [*previous update 4767/10*] WGS84 DATUM

| | | | |
|--------|---|-----|------------------------------|
| Insert | * dries 2m | (a) | 1° 23'·406N., 103° 58'·357E. |
| Delete | depth 3₄ , adjacent to: | | (a) above |

Updated to Admiralty Notices to Mariners Edition No. 47 of 2010 dated 25th November 2010.

V
REPRINT OF ADMIRALTY NOTICES TO MARINERS
FOR DUAL BADGED CHARTS

To accompany Notice to Mariners 5508/10. Image Size (mm) 172.5 by 145.1



Block for Chart No 4037

SINGAPORE ELECTRONIC NAVIGATIONAL CHART (ENC) DISTRIBUTORS

Please approach any of the appointed distributors to purchase the Singapore ENC.

| DISTRIBUTOR | ADDRESS | TELEPHONE/FAX NO./EMAIL/WEBSITE |
|---|--|---|
| DPM (Singapore) Pte Ltd | 1 Maritime Square, #09-72 HarbourFront Centre, Singapore 099253 | Tel. No.: +65 6270 4060 Fax No.: +65 6276 3858 Email: sales@dpmsingapore.com.sg Website: http://www.dpmsingapore.com.sg |
| Motion Smith | 15 Jalan Kilang Barat #08-01/05 Frontech Centre Singapore 159357 | Tel. No.: +65 6220 5098 Fax No.: +65 6225 4902 Email: sales@motsmith.com Website: http://www.motsmith.com |
| Transas Marine Pacific Pte Ltd | Cyber Centre 16 & 18 Jalan Kilang Barat Singapore 159358 | Tel. No.: +65 6271 0200 Fax No.: +65 6271 7300 Email: dominic@transas.com.sg Website: http://www.transas.com.sg |
| Vector Services Pte Ltd | 15 West Coast Highway, #02-14A Pasir Panjang Building Singapore 117861 | Tel. No.: +65 6777 3602 Fax No.: +65 6777 9203 Email: kwchoy@pacific.net.sg |
| ChartWorld GmbH | Ruhrstrasse 90, D-22761 Hamburg, Germany | Tel. No.: +49 40 853 58 6942 Fax No.: +49 40 853 58 6949 Email: sales@chartworld.com Website : http://www.chartworld.com |
| Japan Hydrographic Association Electronic Charts Division | Daiichi Sogo Bldg, 6F 1-6-6, Hanedakuko, Ota-ku, Tokyo 144-0041, Japan | Tel. No.: +81 3 5708 7093 Fax No.: +81 3 5708 7094 Email: shimizu-6kj@jha.jp Website: http://www.jha.or.jp/en/jha/ |
| Jeppesen Norway A/S | P.O Box 212 , N-4371 Egersund, Norway | Tel No.: +47 514 64 700 Fax No.: +47 514 64 701 Email: license.marine@jeppesen.com Website : http://www.jeppesen.com |
| PRIMAR STAVANGER | Lervigsveien 36, P.O Box 60, N-4001 Stavanger, Norway | Tel. No.: +47 51 93 9500 Fax No.: +47 51 93 9501 Email: sales@ecc.no Website : http://www.primar.no |
| United Kingdom Hydrographic Office | Admiralty Way, Taunton, Somerset TA1 2DN United Kingdom | Tel. No.: +44 1823 337900 Fax No.: +44 1823 284077 Emails: ENC.SalesReports@ukho.gov.uk Website: http://www.ukho.gov.uk |

Agents for the Maritime and Port Authority of Singapore Nautical Charts and Publications

Agent's Name : **DPM (Singapore) Pte Ltd**
Address : 1 Maritime Square #09-72, HarbourFront Centre,
Singapore 099253
Telephone : (65) 6270 4060
Fax No. : (65) 6276 3858
E-mail : sales@dpmsingapore.com.sg
Internet Web Site : <http://www.dpmsingapore.com.sg>

Agent's Name : **E.W. Liner Charts & Publications Pte Ltd**
Address : 102F, Pasir Panjang Road, #08-01, Citilink Warehouse Complex,
Singapore 118530
Telephone : (65) 6323 0773
Fax No. : (65) 6323 0775
E-mail : ewliner@singnet.com.sg
Internet Web Site : <http://www.ewliner.com>

Agent's Name : **Motion Smith**
Address : 15 Jalan Kilang Barat
#08-01/05 Frontech Centre,
Singapore 159357
Telephone : (65) 6220 5098
(After office hours: 8163 9993)
Fax No. : (65) 6225 4902
E-mail : sales@motsmith.com
Internet Web Site : <http://www.motsmith.com>

HYDROGRAPHIC NOTE - Instructions

1. Mariners are requested to notify the Chief Hydrographer, Maritime and Port Authority of Singapore, when new or suspected dangers to navigation are discovered, changes are observed in aids to navigation or where corrections to nautical publications may be necessary. Reports, which cannot be confirmed or are lacking in certain details should not be withheld.
2. Any ambiguities of time, positioning and depth should be stressed and any firm expectation of being able to check the information provided on a following voyage should be mentioned.
3. Mariners using satellite position fixing systems, eg. GPS, should provide details of equipment and datum used (where applicable). Where bearings (true or magnetic) are taken visually or by radar to fix a position, it should include more than two objects in order to provide a check on its accuracy. A position may also be defined by bearing and distance from a conspicuous object eg. beacon, lighthouse etc.
4. The note should include a tracing or a digital image of the chart used and the details should be clearly marked.
5. Echo sounders frequently register greater depths than the advertised maximum depth for the equipment, eg. a trace appearing at 50 metres may be in fact be 550 metres or even 1050 metres for equipment whose maximum depth is 500 metres. Erroneous depths caused by 2nd transmission error can usually be recognised by the following:
 - (a) the tracing being weaker than normal for the depth registered,
 - (b) the trace appearing to pass through the transmission line,
 - (c) the feathery nature of the trace.
6. Upon receipt of a hydrographic note, a Notice to Mariners may be issued. The sender's vessel or name is quoted as the source unless the same information is also received in foreign Notices to Mariners.
7. Reports of shoals, uncharted dangers and defects in aids to navigation may also be made to the appropriate Singapore Port Operations Control Centre on VHF Channels 10, 12, 14, 68 or 73.

HYDROGRAPHIC NOTE

To:

Chief Hydrographer
Hydrographic Department
Maritime and Port Authority of Singapore
460 Alexandra Road PSA Building #20-00
Singapore 119963

Tel : (65) 6375 1227
Fax : (65) 6278 7646
Email : hydrographic@mpa.gov.sg

Sender's Contact Details :

Date :

Name of Vessel :

Address of Sender :

Tel : Fax :

Email :

Nature of Observation :

General Location :

Subject :

Position : Lat. Long.

Charts Used :

Date & Time of Observation :

Details :

.....

.....

.....

Attachment :

Equipment Used :

Type of Position Fixing : GPS / DGPS Others :

Type of Echo Sounder :

Name and Signature :

Ship's/Company's Stamp :