



SINGAPOREAN NOTICES TO MARINERS

SECTION	CONTENT	Page
I	Index of Charts & Publications	214
II	New Publications	217
	Notices to Mariners and Chart Corrections	220
	Temporary and Preliminary Notices	222
III	Navigational Information	223
	Amendments to Publications	224
IV	Reprint of Radio Navigational Warnings	225
V	Reprint of Admiralty Notices to Mariners for Dual Badged Charts	226

The monthly Notices to Mariners contain corrective information affecting charts published by the Hydrographic Department, Maritime and Port Authority of Singapore. The information contained in these Notices should be updated on the charts affected. Notices under Section II apply only to the particular Singaporean Chart(s) indicated.

Mariners are requested to notify the Chief Hydrographer, Maritime and Port Authority of Singapore, immediately on the discovery of new dangers or suspected dangers to navigation and of changes or defects in aids to navigation. See Hydrographic Note on back page.

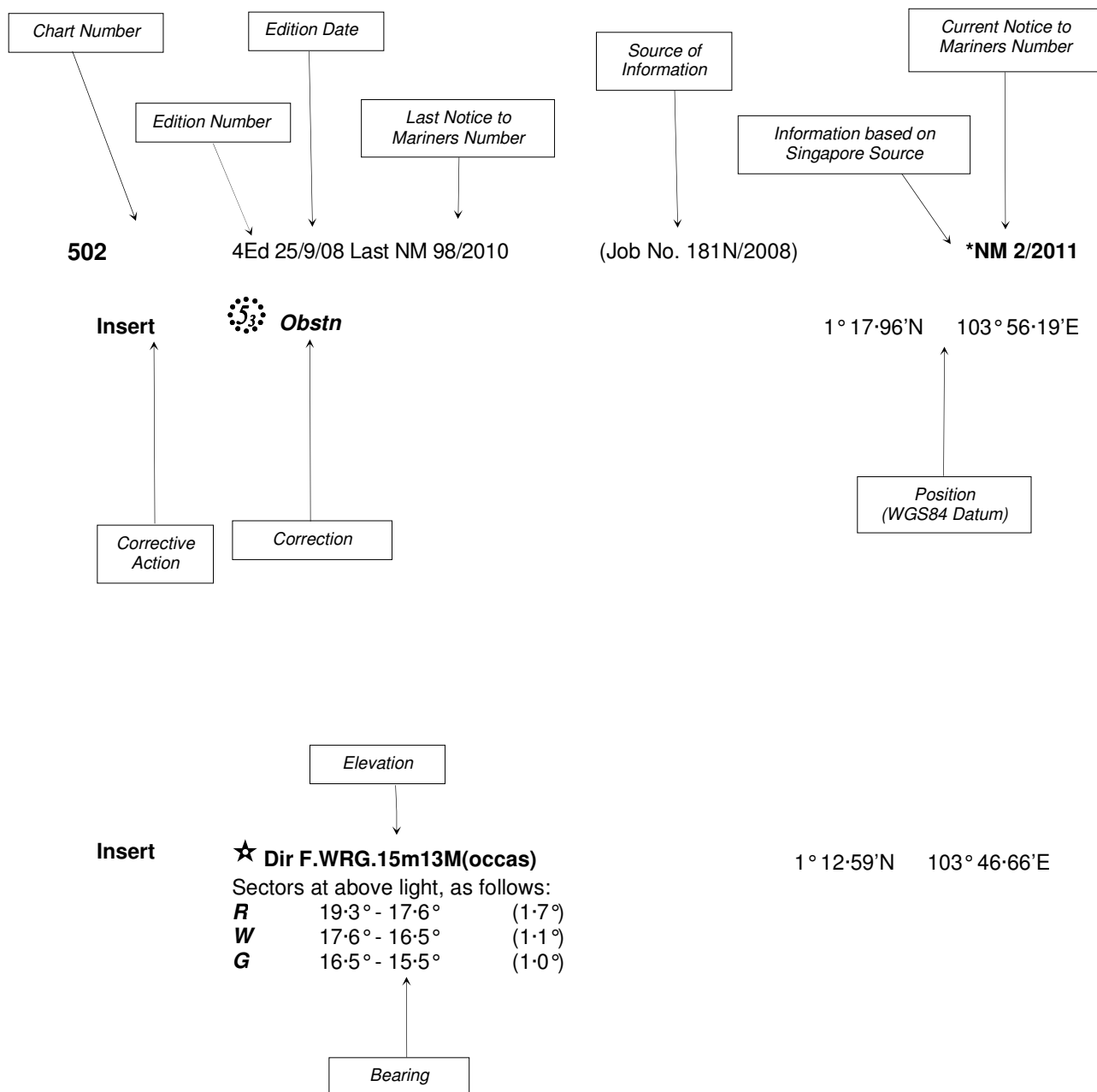
The monthly Singaporean Notices to Mariners can be accessed directly from the MPA website:
[http://www.mpa.gov.sg/sites/port_and_shipping/circulars_and_notices/singapore_notices_to_mariners\(ntm\).page](http://www.mpa.gov.sg/sites/port_and_shipping/circulars_and_notices/singapore_notices_to_mariners(ntm).page)

This service is offered free of charge.

Hydrographic Department
Maritime and Port Authority of Singapore
460 Alexandra Road
PSA Building #20-00
Singapore 119963
Tel: (65) 6375 1227
Fax: (65) 6278 7646

EXPLANATION OF FORMAT

The elements of a typical chart correction are explained below.



Notes:

- a) Notice to Mariners number followed by:
T indicates a Temporary Notice (eg. ***NM 3T/2011**).
P indicates a Preliminary Notice (eg. ***NM 4P/2011**).
- b) Bearings are true reckoned clockwise from 000° to 359°; those relating to lights are from seaward.
- c) Heights and elevations are above Mean High Water Springs.

I
INDEX OF CHARTS AND PUBLICATIONS

INDEX OF AFFECTED CHARTS

DESCRIPTION	NOTICE NO.	PAGE NO.
Index of Singaporean Charts	-	214
Index of Dual Badged Charts	-	215
Index of Singapore Electronic Navigational Chart (ENC)	-	216
Singapore Tide Tables 2012	-	217 to 219
Singaporean Chart SP1/GSP1	*103, *104, 105, *106, *107	220
Singaporean Chart 202	*108, 109	220
Singaporean Chart 501	*107	220
Singaporean Chart 502	*103, *110	221
Singaporean Chart 503	*108, 109, *111, 112, 113	221
Temporary and Preliminary Notices	114T	222
Port Marine Notices	*115	223
Singaporean Print-On-Demand (POD) Charts	*116	223
Amendments to Publications	-	224
Reprint of Radio Navigational Warnings	-	225
Extract of Admiralty Notices to Mariners for Dual Badged Charts	-	226
Singapore Electronic Navigational Chart (ENC) Distributors	-	227
Chart Agents for the Maritime and Port Authority of Singapore Nautical Charts and Publications	-	227

*Denotes information are based on Singaporean source.

I
INDEX OF CHARTS AND PUBLICATIONS

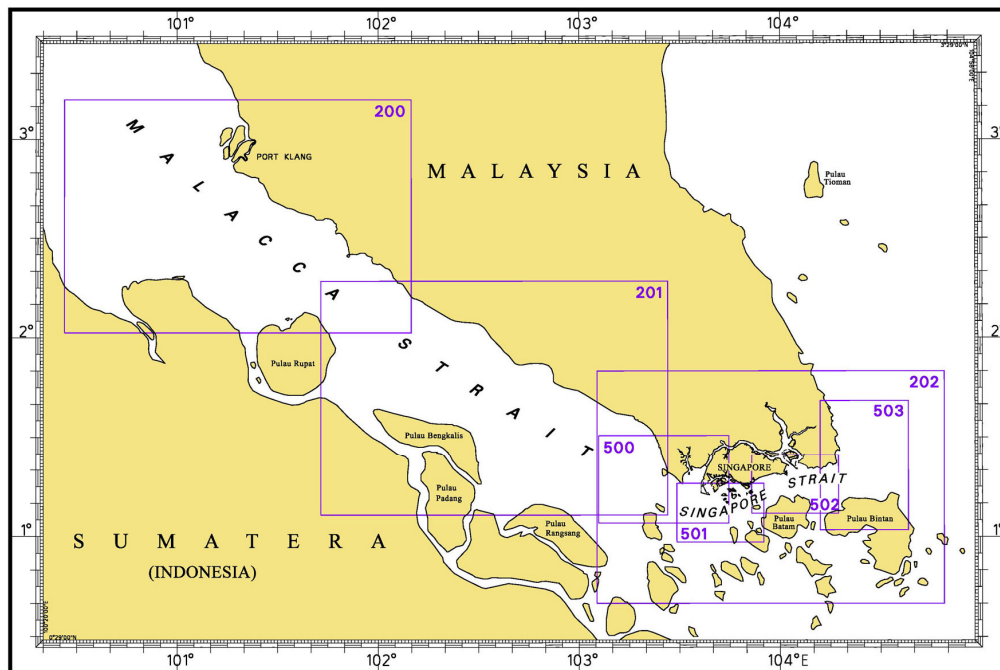
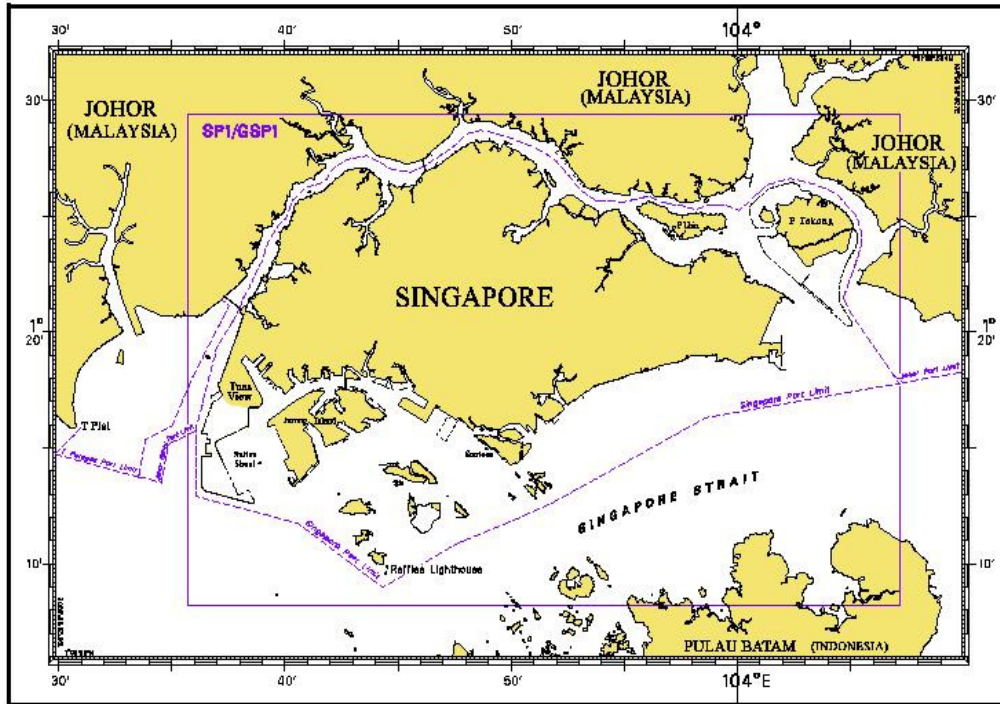
INDEX OF NOTICES

NOTICE NO.	DESCRIPTION	PAGE NO.
-	Index of Singaporean Charts	214
-	Index of Dual Badged Charts	215
-	Index of Singapore Electronic Navigational Chart (ENC)	216
-	Singapore Tide Tables 2012	217 to 219
*103, *104, 105, *106, *107	Singaporean Chart SP1/GSP1	220
*108, 109	Singaporean Chart 202	220
*107	Singaporean Chart 501	220
*103, *110	Singaporean Chart 502	221
*108, 109, *111, 112, 113	Singaporean Chart 503	221
114T	Temporary and Preliminary Notices	222
*115	Port Marine Notices	223
*116	Singaporean Print-On-Demand (POD) Charts	223
-	Amendments to Publications	224
-	Reprint of Radio Navigational Warnings	225
-	Extract of Admiralty Notices to Mariners for Dual Badged Charts	226
-	Singapore Electronic Navigational Chart (ENC) Distributors	227
-	Chart Agents for the Maritime and Port Authority of Singapore Nautical Charts and Publications	227

* Denotes information are based on Singaporean source.

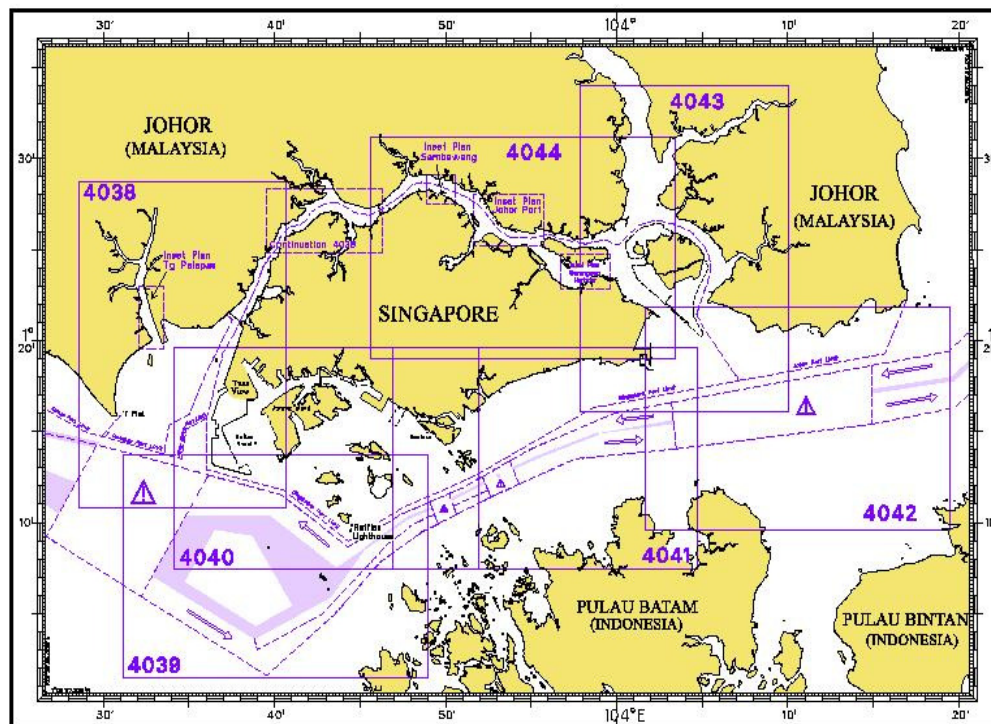
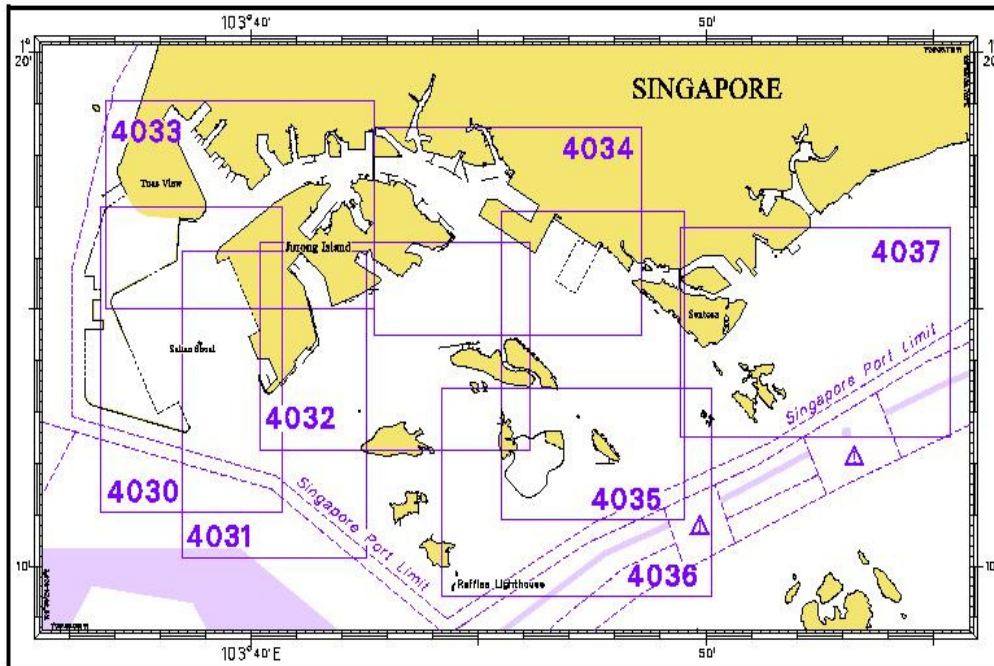
I INDEX OF CHARTS AND PUBLICATIONS

INDEX OF SINGAPOREAN CHARTS



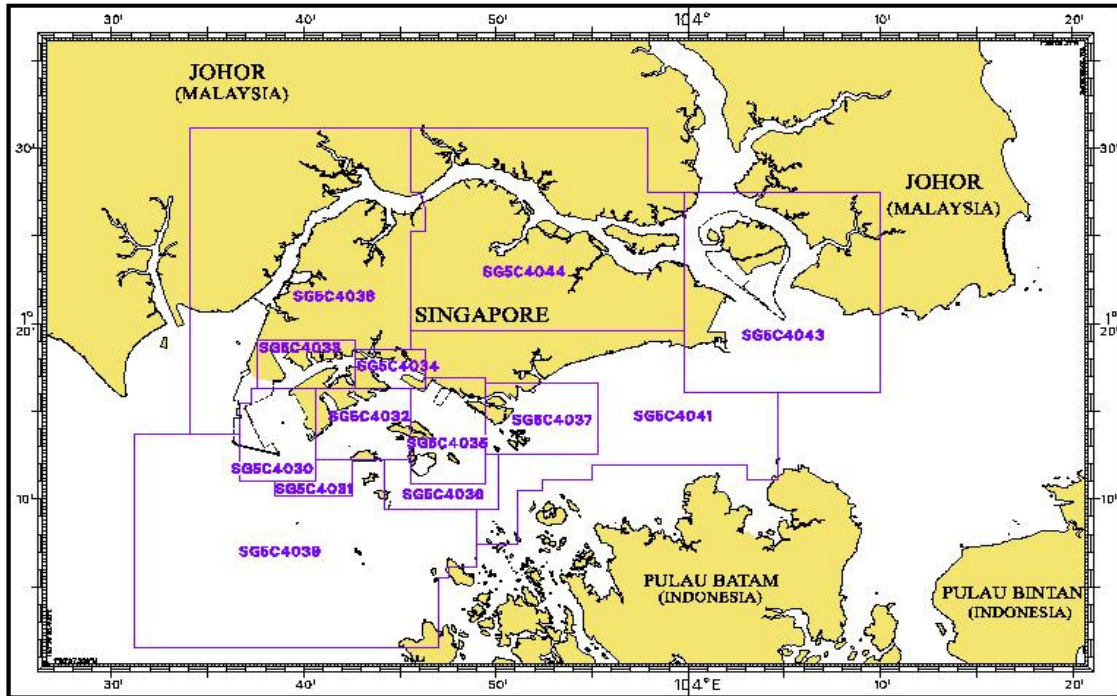
Notes:
 Updated SINGAPOREAN Charts are available through our Print-On-Demand (POD) Chart Service. For more information, refer to Section III – Navigational Information and these charts can be purchased from our authorised Chart Agents:
 DPM (Singapore) Pte Ltd, E.W. Liner Charts & Publications Pte Ltd and Motion Smith.

I
INDEX OF CHARTS AND PUBLICATIONS
INDEX OF DUAL BADGED CHARTS



I INDEX OF CHARTS AND PUBLICATIONS

INDEX OF SINGAPORE ELECTRONIC NAVIGATIONAL CHART (ENC)



COVERAGE OF SINGAPORE ELECTRONIC NAVIGATIONAL CHART (ENC)

ENC Name	ENC Coverage	ENC Edition (Release 2010.1)
SG5C4030	West Jurong Anchorages and Temasek Fairway	4 th Edition (28/10/2010)
SG5C4031	Western Approaches to Jurong Island	4 th Edition (28/10/2010)
SG5C4032	Sinki Fairway	6 th Edition (27/04/2011)
SG5C4033	Tuas Bay, West Jurong Channel and Pesek Basin	4 th Edition (28/10/2010)
SG5C4034	East Jurong Channel, Pasir Panjang Terminal and West Keppel Fairway	9 th Edition (29/09/2011)
SG5C4035	Western Anchorages, Jong Fairway and Cruise Bay	10 th Edition (29/09/2011)
SG5C4036	Raffles Lighthouse to The Sisters	5 th Edition (27/04/2011)
SG5C4037	Keppel Harbour, Tanjong Pagar Terminal and Approaches	5 th Edition (27/04/2011)
SG5C4038	Johor Strait – Western Part	4 th Edition (28/10/2010)
SG5C4039	Western Approaches to Main Strait	4 th Edition (11/08/2011)
SG5C4041	Pulau Sebarok to Changi	5 th Edition (11/08/2011)
SG5C4043	Kuala Johor and Sungai Johor	6 th Edition (28/07/2011)
SG5C4044	Johor Strait – Eastern Part	6 th Edition (28/07/2011)

II NEW PUBLICATIONS

PUBLICATION OF SINGAPORE TIDE TABLES YEAR 2012

Summary of Publication

This 251-page book contains Tidal Height and Tidal Stream Predictions covering stations in Singapore port waters and along the Malacca and Singapore Straits.

A new Tidal Stream Predictions station (Main Strait – off Tuas View) is included in the publication. This publication consist of 5 main segments to facilitate easy reference.

1. **High and Low Water Predictions** at the following stations:
 - a) Tanjong Pagar
 - b) Sembawang

2. **Hourly Tidal Height Predictions** at the following stations:
 - a) Tuas
 - b) Raffles Lighthouse
 - c) West Coast
 - d) Bukom
 - e) Tanjong Pagar
 - f) Tanah Merah
 - g) Tanjong Changi
 - h) Sembawang
 - i) Singapore Strait - Horsburgh Lighthouse

3. **Hourly Tidal Stream Predictions** at the following stations:
 - a) **Main Strait – off Tuas View**
 - b) Jong Fairway – Sisters Buoy
 - c) Main Strait – off Gusong Boarding Ground (formerly Gusong Beacon)
 - d) Sentosa
 - e) East Buran
 - f) Main Strait – Eastern Petroleum A
 - g) Kuala Johor – off Malang Tiga

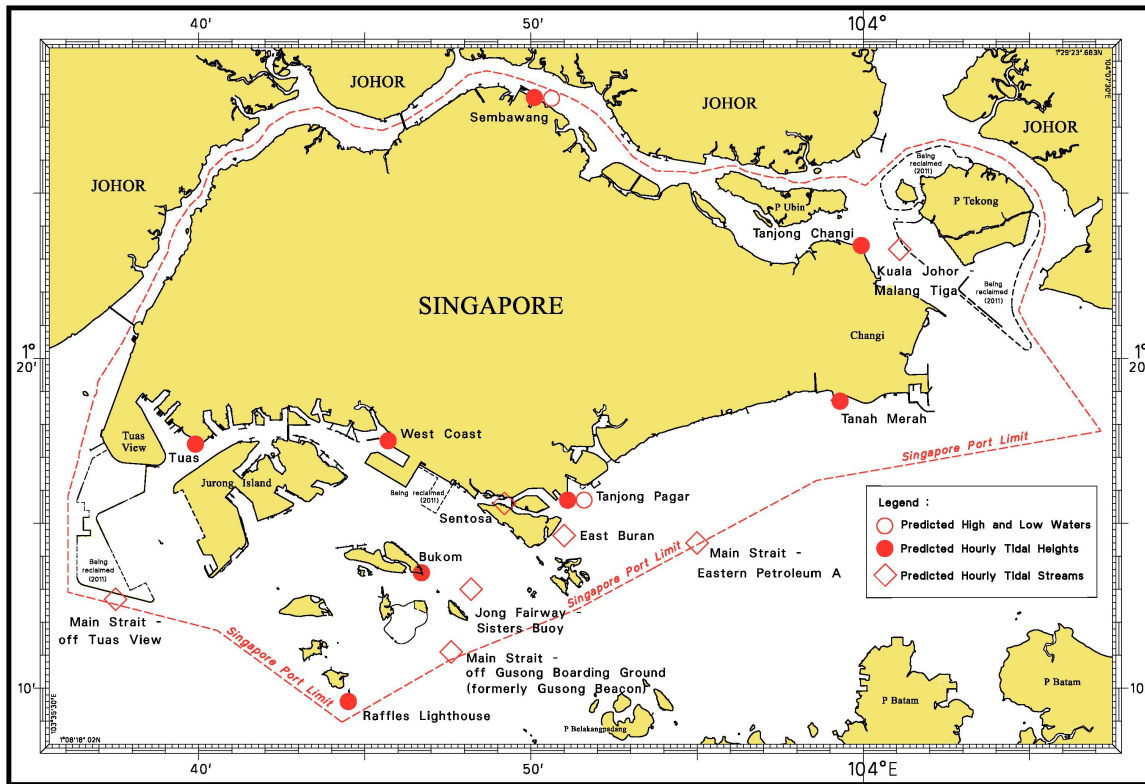
4. **Maximum and Slack Tidal Stream Predictions** at the following stations:
 - a) Malacca Strait – Off The Brothers Light
 - b) Singapore Strait – Selat Phillip
 - c) Singapore Strait – Karang Banteng (Buffalo Rock)
 - d) Singapore Strait - Horsburgh Lighthouse

5. **Malacca Strait – High and Low Water Predictions** at the following stations:
 - a) Kedah Pier, Pulau Pinang
 - b) Port Dickson
 - c) Kuala Batu Pahat

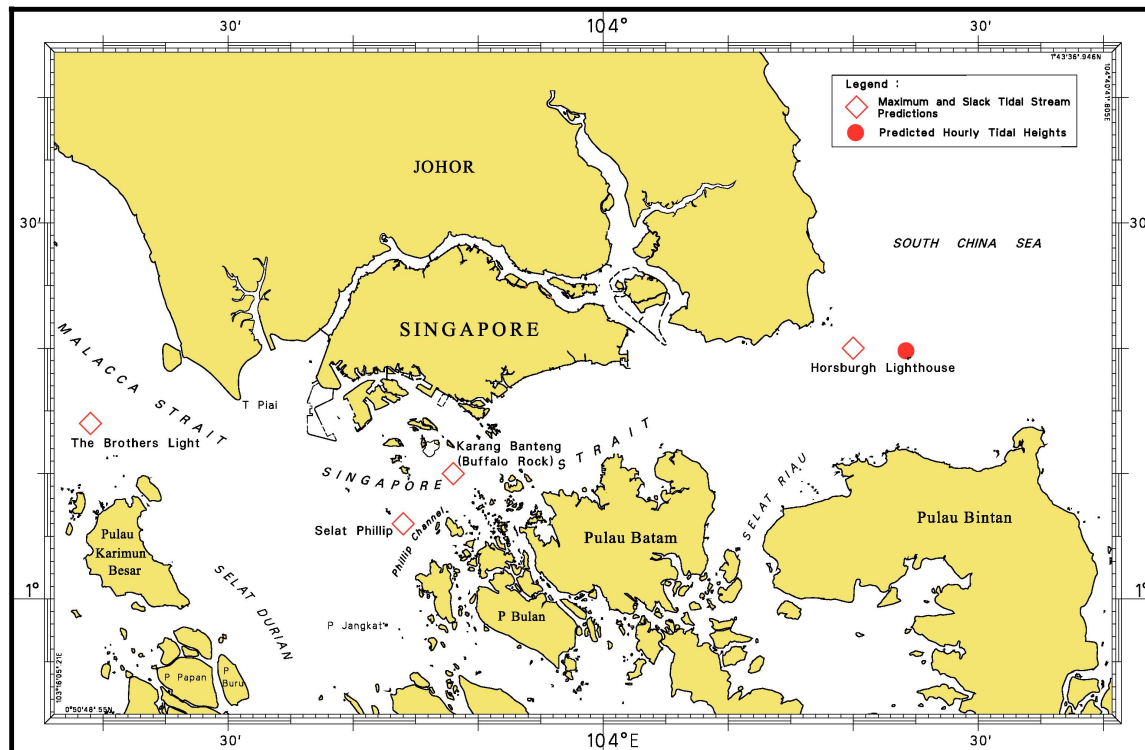
The locations of the above stations are shown in the chartlets below:

II NEW PUBLICATIONS

Tidal Prediction Stations within Singapore port waters



Tidal Prediction Stations in Malacca and Singapore Straits



II NEW PUBLICATIONS

Tidal Prediction Stations in Malacca Strait













This publication is available from the following Chart Agents:






1. DPM (Singapore) Pte Ltd
2. E.W. Limer Charts & Publications Pte Ltd
3. Motion Smith

(Please refer Page 227 for details)

II
NOTICES TO MARINERS AND CHART CORRECTIONS

SP1/GSP1	6 Ed 27/1/11 Last NM 94/2011	(HD/HE025/97/2011)	*NM 103/2011
Insert	 Dir F.WRG.12m6-7M CNB (with white triangle daymark point downward on white tower) sectors at light-beacon as follows: G 80·0° - 87·5° (7·5°) W 87·5° - 92·5° (5°) R 92·5° - 100·0° (7·5°)	(a)	1°18·48'N 104°01·77'E (a) above
		(HD/HE025/99 to 101/2011)	*NM 104/2011
Insert	 Fl.Y.4s CEF03		1°20·84'N 104°02·82'E
	 Fl.Y.4s CEF02		1°20·71'N 104°02·63'E
	 Fl.Y.4s CEF01		1°20·71'N 104°02·36'E
		(Royal Malaysian Navy Notice No. 10/167/2011)	NM 105/2011
Insert	 Obstn		1°26·16'N 104°04·37'E
		(HD/HE025/110/2011)	*NM 106/2011
Insert	 Fl(3)R.15s Merbau		1°15·62'N 103°43·77'E
		(HD/HE025/111/2011)	*NM 107/2011
Delete	 Fl(3)R.15s7m5M Merbau		1°15·78'N 103°43·76'E
<hr/>			
202	6 Ed 24/9/09 Last NM 74/2011	(HD/HY/L00102111)	*NM 108/2011
Insert	depth 27₆		1°29·13'N 104°29·40'E
		(HD/JS/L0X101511)	NM 109/2011
Insert	dries  Wk		1°19·80'N 104°24·57'E
Delete	 Mast		1°19·82'N 104°24·59'E
<hr/>			
501	5 Ed 24/9/09 Last NM 74/2011	(HD/HE025/111/2011)	*NM 107/2011
Delete	 Fl(3)R.15s7m5M Merbau		1°15·78'N 103°43·76'E

II
NOTICES TO MARINERS AND CHART CORRECTIONS

502	5 Ed 22/9/11 New Edition	(HD/HE025/97/2011)	*NM 103/2011
Insert	 Dir F.WRG.12m6-7M CNB (with white triangle daymark point downward on white tower)	(a)	1°18·48'N 104°01·77'E
	sectors at light-beacon as follows: G 80·0° - 87·5° (7·5°) W 87·5° - 92·5° (5°) R 92·5° - 100·0° (7·5°)	(a) above	
		(HD/HY/N00112011)	*NM 110/2011
Insert	 Obstn		1°20·24'N 104°03·70'E
<hr/>			
503	4 Ed 1/4/10 Last NM 51/2011	(HD/HY/L00102111)	*NM 108/2011
Insert	depth 27₆		1°29·13'N 104°29·40'E
Delete	depth 28₈		1°28·97'N 104°29·48'E
		(HD/JS/L0X101511)	NM 109/2011
Insert	dries  Wk		1°19·80'N 104°24·57'E
Move	symbol * with dries (0₉) from: to:		1°19·76'N 104°24·57'E 1°19·82'N 104°24·58'E
Delete	 Mast		1°19·82'N 104°24·59'E
		(HD/HY/L00102011)	*NM 111/2011
Insert	depth 8₁ , extend 10m contour		1°27·46'N 104°26·89'E
Delete	depth 8₇		1°27·38'N 104°26·76'E
		(HD/JS/L0X101211)	NM 112/2011
Insert			1°19·66'N 104°24·69'E
Substitute	depth 11₃ for depth 9₉ enclosed by 10m contour		1°19·64'N 104°24·98'E
		(HD/JS/L0X101311)	NM 113/2011
Substitute	depth 20₇ for depth 27		1°18·96'N 104°24·70'E

II TEMPORARY AND PRELIMINARY NOTICES

(NM 114T/2011) ASIA SUBMARINE CABLE EXPRESS (ASE) – Cable Installation Segment 1.9

Remark : The cable installation Segment 1.9 will be laid at the Eastbound Lane of the Traffic Separation Scheme (TSS), thence through the eastern entrance of the TSS, Singapore Strait.

Work Vessel : Cable Ship FU HAI

Date of Installation: With effect from 23rd November to 17th December 2011.

Operating hours : Daylight hours from Point A to Point C and 24 hours basis after Point C.

1. The submarine cable routes are listed as follows :

RPL No.	(RPL Co-ordinates: WGS84)		Remarks (Working hours)
	Latitude (N)	Longitude (E)	
From Point A	1° 15·39'	104° 04·75'	Daylight hours
to Point B	1° 14·35'	104° 05·62'	Daylight hours
to Point C	1° 14·80'	104° 09·13'	Daylight hours
to Point D	1° 16·20'	104° 14·80'	24 hours
to Point E	1° 20·14'	104° 23·98'	24 hours
to Point F	1° 23·98'	104° 27·27'	24 hours
to Point G	1° 28·84'	104° 34·42'	24 hours
to Point H	1° 37·33'	104° 38·49'	24 hours
to Point I	1° 40·23'	104° 40·33'	24 hours

2. Charts affected : GSP1, SP1, 202, 502, 503, 4041, 4042 and 4043.

3. Mariners are advised

- a) to navigate with caution.
- b) not to anchor or trawl in the vicinity of the cable route.
- c) to give a wide berth when approaching the working vessel.

Source : HD/DB67/9/2011.
(This is a repetition of Notice No. 98T/2011)

III NAVIGATIONAL INFORMATION

***(NM 115/2011) PORT MARINE NOTICES**

The following PMNs have been shortlisted, as they would be of particular interest to mariners.

These notices can be accessed directly from MPA website:

http://www.mpa.gov.sg/sites/port_and_shipping/circulars_and_notices/port_marine_notices.page

PMN No.	Subject
149/2011	Reclamation of Tuas View Extension.
150/2011	Dredging works off Pasir Panjang Terminal.
153/2011	Construction of new Floating Dock and South Quay extension at Keppel Singmarine Shipyard.
154/2011	Construction of sea water intake structure off Jurong Island.
155/2011	Dredging works in Sembawang Basin.
158/2011	Construction of pontoon facility at West Coast Base.

***(NM 116/2011) SINGAPOREAN PRINT-ON-DEMAND (POD) CHARTS**

Print-On-Demand (POD) Charts are the most up-to-date paper nautical charts printed for navigational use. These nautical charts are produced in accordance with the International Hydrographic Organisation (IHO) charting specifications. These official nautical charts are continually updated to the latest Notices to Mariners before they are printed and sold to users.

These POD Charts include SP1/GSP1, 200, 201, 202, 500, 501, 502 and 503.

BENEFITS TO OUR CUSTOMERS

Convenience

Customers need not make numerous hand corrections to the nautical charts before use. In addition the updated POD Charts are more accurate and reliable than offset printed charts with hand corrections.

Clarity

Clarity in the presentation of updated information as compared to lithographic printed charts, where in some cases there are several overlapping corrections over existing information.

Coverage

The POD Charts cover the Malacca and Singapore Straits, from One Fathom Bank to Horsburgh Lighthouse.

**III
AMENDMENTS TO PUBLICATIONS**

Nil

IV
REPRINT OF RADIO NAVIGATIONAL WARNINGS

The following Radio Navigational Warnings have been shortlisted, as they would be of particular interest to mariners.

TT002

BATU BERHANTI BUOY FL(2) 5 Secs POSITION 01°11.76'N 103°52.51'E REPORTED UNLIT.

TT003

SAFE WATER MARK LFL 10S(RW) IN POSITION 01°02.95'N 103°38.99'E MARKING THE ENTRANCE INTO DWR IS MISSING.

TT173

VESSELS IN EAST JOHOR STRAIT ARE ADVISED TO NAVIGATE WITH CAUTION WHEN NEAR THE PROJECT AREAS OFF PULAU TEKONG, CHANGI AND MALANG PAPAN AS SHALLOW WATER AREAS EXIST. VESSELS ARE ADVISED TO KEEP LOOKOUT FOR TUGS AND BARGES NAVIGATING NEAR THE PROJECT AREAS AND PASSENGER FERRIES CROSSING BETWEEN CHANGI AND PULAU TEKONG AND VICINITY OF PASIR GUDANG.

TT619

DREDGER "ANDROMEDA V" IS CONDUCTING DREDGING OPERATIONS IN COORDINATES:

01°14.890' N 103°58.120' E

01°16.210' N 104°01.630' E

01°16.090' N 104°01.670' E

01°14.680' N 103°58.200' E

VESSELS ARE TO KEEP CLEAR OF THE WORKING VESSEL.

TT884

SALVAGE OPERATIONS UNDERWAY IN 01°13.40'N 103°57.75'E. ALL SHIPS ARE REQUESTED TO GIVE A WIDE BERTH OF AT LEAST 5 CABLES WHEN PASSING THE AREA.

TT931

VESSELS NAVIGATING IN THE SINGAPORE STRAIT ARE REQUESTED NOT TO DIRECT THEIR HIGH INTENSITY SEARCHLIGHTS SKYWARD IN THE VICINITY OF CHANGI AIRPORT TO AVOID DISRUPTION TO AIR NAVIGATION.

TT961

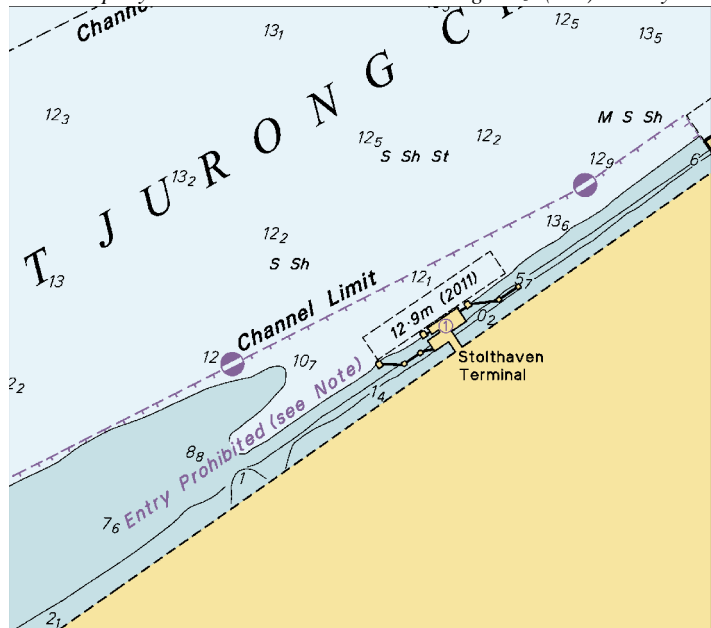
VESSELS INTENDING TO CROSS THE TRAFFIC SEPERATION SCHEME(TSS) OR PRECAUTIONARY AREAS IN THE SINGAPORE STRAIT DURING THE HOURS OF DARKNESS ARE RECOMMENDED TO DISPLAY THE NIGHT SIGNALS CONSISTING OF 3 ALL-ROUND GREEN LIGHTS IN A VERTICAL LINE WITH EFFECT FROM 1ST JULY 2011 AT 0000HRS UTC (0800HRS SINGAPORE LOCAL TIME) AS DETAILED IN MARITIME AND PORT AUTHORITY OF SINGAPORE'S PORT MARINE CIRCULAR, 02 OF 2011 DATED 30 MAY 2011.

TT997

BUFFALO ROCK BEACON AT APPROX POSITION LAT 01°09.41'N LONG 103°48.80'E REPORTED COLLAPSED. CAUTION ADVISED.

ISSUED BY SINGAPORE PORT OPERATIONS CONTROL CENTRE (as at 27th November 2011)

To accompany Notice to Mariners 5023/11. Image Size (mm) 82.2 by 93.7



Block for Chart No 4033

SINGAPORE ELECTRONIC NAVIGATIONAL CHART (ENC) DISTRIBUTORS

Please approach any of the appointed distributors to purchase the Singapore ENC.

DISTRIBUTOR	ADDRESS	TELEPHONE/FAX NO./EMAIL/WEBSITE
DPM (Singapore) Pte Ltd	1 Maritime Square, #09-72 HarbourFront Centre, Singapore 099253	Tel. No.: +65 6270 4060 Fax No.: +65 6276 3858 Email: sales@dpsmsingapore.com.sg Website: http://www.dpsmsingapore.com.sg
MARIS Information Systems (MARIS)	52 Telok Blangah Road #01-06 Telok Blangah House Singapore 058809	Tel. No.: +65 6276 1472 Fax No.: +65 6276 1473 Email: support@maris.sg Website: http://www.maris.no
Maritime Information Systems AS (MARIS)	Danholmen 25, 3128 Notteroy, Norway	Tel. No.: +47 33 30 42 50 Fax No.: +47 33 30 42 51 Email: sales@maris.no Website: http://www.maris.no
Motion Smith	15 Jalan Kilang Barat #08-01/05 Frontech Centre Singapore 159357	Tel. No.: +65 6220 5098 Fax No.: +65 6225 4902 Email: sales@motsmith.com Website: http://www.motsmith.com
Transas Marine Pacific Pte Ltd	Cyber Centre 16 & 18 Jalan Kilang Barat Singapore 159358	Tel. No.: +65 6271 0200 Fax No.: +65 6271 7300 Email: dominic@transas.com.sg Website: http://www.transas.com.sg
Vector Services Pte Ltd	15 West Coast Highway, #02-14A Pasir Panjang Building Singapore 117861	Tel. No.: +65 6777 3602 Fax No.: +65 6777 9203 Email: kwchoy@pacific.net.sg
ChartWorld GmbH	Ruhrstrasse 90, D-22761 Hamburg, Germany	Tel. No.: +49 40 853 58 6942 Fax No.: +49 40 853 58 6949 Email: sales@chartworld.com Website : http://www.chartworld.com
Japan Hydrographic Association Electronic Charts Division	Daiichi Sogo Bldg, 6F 1-6-6, Hanedakuko, Ota-ku, Tokyo 144-0041, Japan	Tel. No.: +81 3 5708 7093 Fax No.: +81 3 5708 7094 Email: shimizu-6kj@jha.jp Website: http://www.jha.or.jp/en/jha/
Jeppesen Norway A/S	P.O Box 212 , N-4371 Egersund, Norway	Tel No.: +47 514 64 700 Fax No: +47 514 64 701 Email: license.marine@jeppesen.com Website : http://www.jeppesen.com
PRIMAR STAVANGER	Lervigsveien 36, P.O Box 60, N-4001 Stavanger, Norway	Tel. No.: +47 51 93 9500 Fax No.: +47 51 93 9501 Email: sales@ecc.no Website : http://www.primar.no
United Kingdom Hydrographic Office	Admiralty Way, Taunton, Somerset TA1 2DN United Kingdom	Tel. No.: +44 1823 337900 Fax No.: +44 1823 284077 Email: ENC.SalesReports@ukho.gov.uk Website: http://www.ukho.gov.uk

**Chart Agents for the Maritime and Port Authority of Singapore
Nautical Charts and Publications**

Please approach any of the appointed chart agent to purchase the Singapore Nautical Charts and Publications.

CHART AGENT	ADDRESS	TELEPHONE/FAX NO./EMAIL/WEBSITE
DPM (Singapore) Pte Ltd	1 Maritime Square, #09-72 HarbourFront Centre, Singapore 099253	Tel. No.: +65 6270 4060 Fax No.: +65 6276 3858 Email: sales@dpsmsingapore.com.sg Website: http://www.dpsmsingapore.com.sg
E.W. Liner Charts & Publications Pte Ltd	102F, Pasir Panjang Road, #08-01, Citilink Warehouse Complex, Singapore 118530	Tel. No.: +65 6323 0773 Fax No.: +65 6323 0775 Email: ewliner@singnet.com.sg Website: http://www.ewliner.com
Motion Smith	15 Jalan Kilang Barat #08-01/05 Frontech Centre Singapore 159357	Tel. No.: +65 6220 5098 (After office hours: +65 8163 9993) Fax No.: +65 6225 4902 Email: sales@motsmith.com Website: http://www.motsmith.com

HYDROGRAPHIC NOTE - Instructions

1. Mariners are requested to notify the Chief Hydrographer, Maritime and Port Authority of Singapore, when new or suspected dangers to navigation are discovered, changes are observed in aids to navigation or where corrections to nautical publications may be necessary. Reports, which cannot be confirmed or are lacking in certain details should not be withheld.
2. Any ambiguities of time, positioning and depth should be stressed and any firm expectation of being able to check the information provided on a following voyage should be mentioned.
3. Mariners using satellite position fixing systems, eg. GPS, should provide details of equipment and datum used (where applicable). Where bearings (true or magnetic) are taken visually or by radar to fix a position, it should include more than two objects in order to provide a check on its accuracy. A position may also be defined by bearing and distance from a conspicuous object eg. beacon, lighthouse etc.
4. The note should include a tracing or a digital image of the chart used and the details should be clearly marked.
5. Echo sounders frequently register greater depths than the advertised maximum depth for the equipment, eg. a trace appearing at 50 metres may be in fact be 550 metres or even 1050 metres for equipment whose maximum depth is 500 metres. Erroneous depths caused by 2nd transmission error can usually be recognised by the following:
 - (a) the tracing being weaker than normal for the depth registered,
 - (b) the trace appearing to pass through the transmission line,
 - (c) the feathery nature of the trace.
6. Upon receipt of a hydrographic note, a Notice to Mariners may be issued. The sender's vessel or name is quoted as the source unless the same information is also received in foreign Notices to Mariners.
7. Reports of shoals, uncharted dangers and defects in aids to navigation may also be made to the appropriate Singapore Port Operations Control Centre on VHF Channels 10, 12, 14, 68 or 73.

HYDROGRAPHIC NOTE

To:

Chief Hydrographer
Maritime and Port Authority of Singapore
460 Alexandra Road PSA Building #20-00
Singapore 119963

Tel : (65) 6375 1227
Fax : (65) 6278 7646
Email : hydrographic@mpa.gov.sg

Sender's Contact Details :

Date :

Name of Vessel :

Address of Sender :

Tel : Fax :

Email :

Nature of Observation :

General Location :

Subject :

Position : Lat. Long.

Charts Used :

Date & Time of Observation :

Details :

.....

.....

Attachment :

Equipment Used :

Type of Position Fixing : GPS / DGPS Others :

Type of Echo Sounder :

Name and Signature :

Ship's/Company's Stamp :